



VCU

Virginia Commonwealth University
VCU Scholars Compass

Pattern Project

Dept. of Interior Design

2019

Pattern Project - Salmon

Yufei Zheng

Follow this and additional works at: <https://scholarscompass.vcu.edu/pp>



Part of the [Interior Design Commons](#)

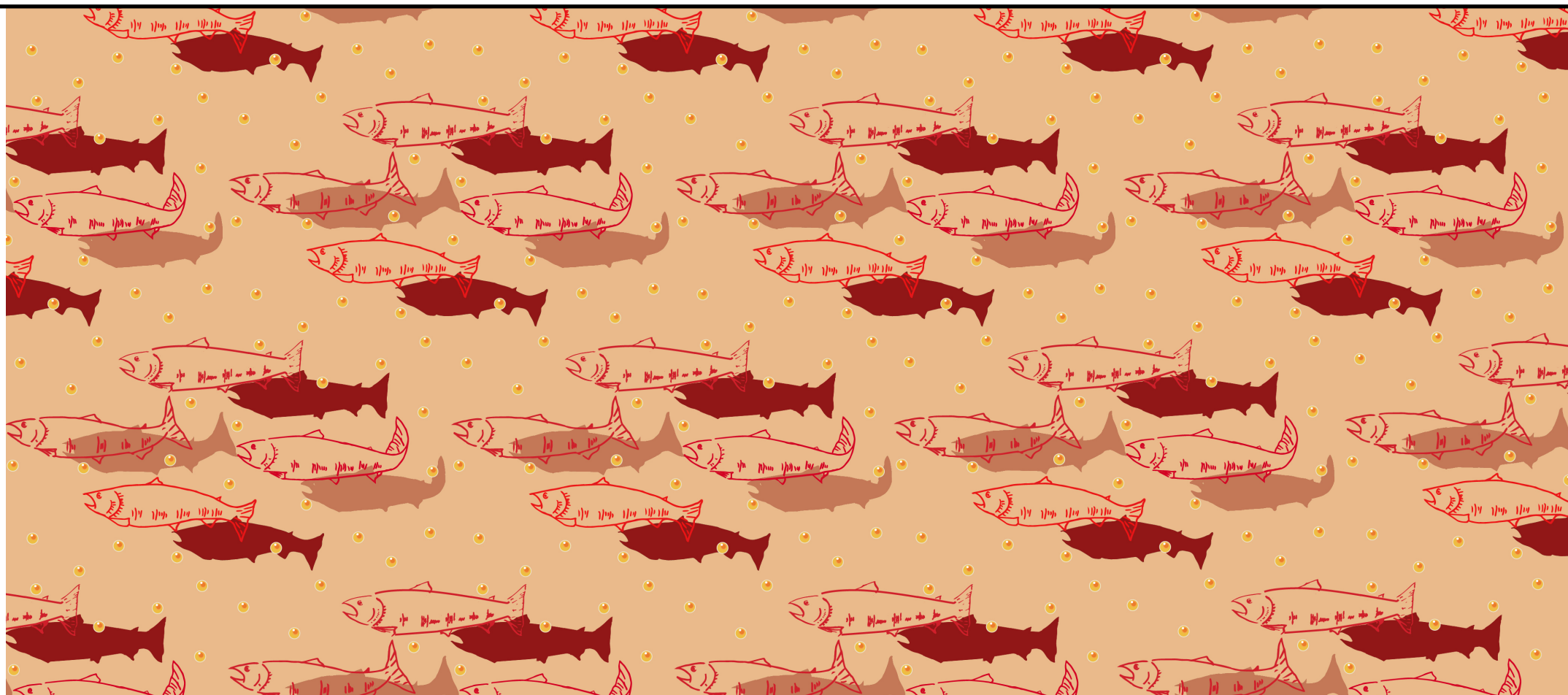
Recommended Citation

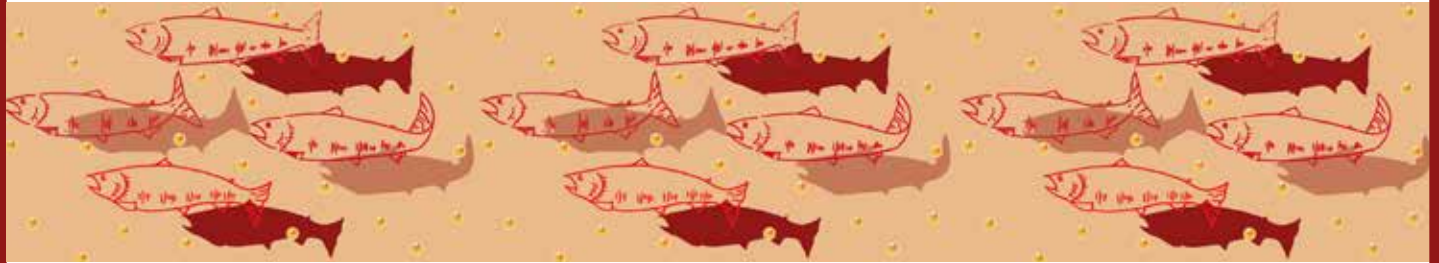
<https://scholarscompass.vcu.edu/pp/15>

This Book is brought to you for free and open access by the Dept. of Interior Design at VCU Scholars Compass. It has been accepted for inclusion in Pattern Project by an authorized administrator of VCU Scholars Compass. For more information, please contact libcompass@vcu.edu.



Salmon





IDES 321 PATTERN PROJECT

Fall 2019
Yufei Zheng



Inspiration

The inspiration for my pattern came from my personal experience with the Salmon Run at Port Hope, Ontario, Canada. During my winter break, I went to visit my aunt's restaurant at Port Hope, and she told me about the Salmon Run. I went to the site and was amazed by the scene that I saw. Hundreds of salmon swimming against the stream and trying to go up to the upstream to lay their eggs. The journey was not easy because the way to upstream was blocked by a man made dam. They had to swim through the passageway on the side of the dam to get to the upstream. The salmon have to keep on swimming because if they stop they will get pushed back by the water. I was fascinated by these salmon of how determine and perseverance they are. They only have one thing in their mind, it is to lay the eggs and start the next life cycle.



Salmon Runs (Sockeye Salmon) AKA. Red Salmon (Pacific Salmon) wild Salmon

Evolution of Salmon

eggs



Alevin

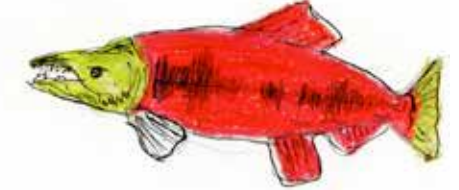


Mature / ocean salmon
Marin phase

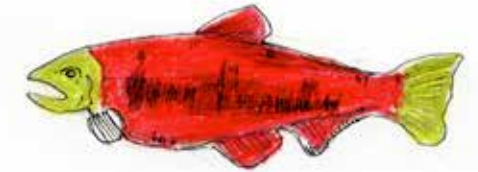


Spawning phase

male



Female



Life of a Salmon (Sockeye Salmon)

- The Salmon's body will turn red.
- The migration is extremely difficult. Swim against the stream. They will have to keep on swimming so they won't get push back by the water. The chance of get eaten by grizzly bears. Human created obstacles, like dams.
- It is usually a group of salmon going to the same direction.

- Female salmon will dig a hole with her tail to lay thousand of eggs and fertilized by the male salmon.
- They die after laying the eggs because they don't eat before they lay the eggs.
- The life cycle starts again



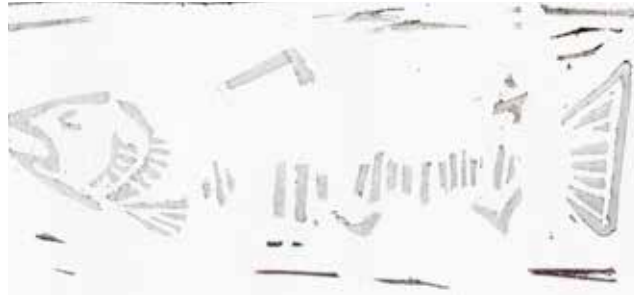
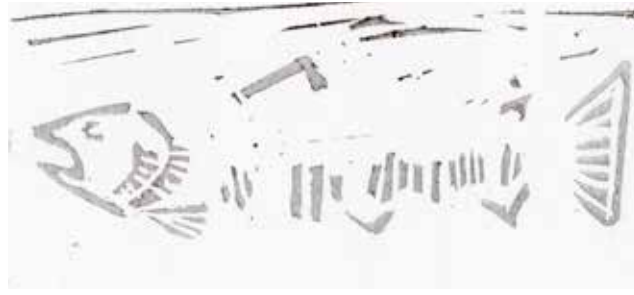
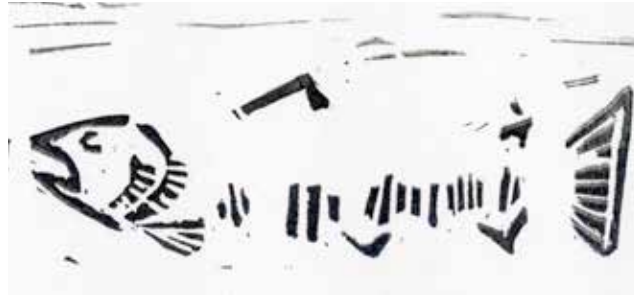
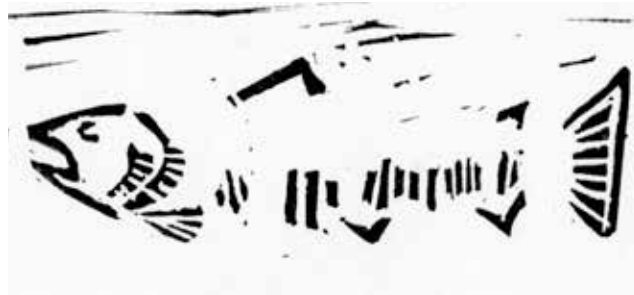
After about a year, the baby fish will follow river to ocean to live majority of their lives there.

- Spend adulthood in Ocean
- Travel hundred or even thousands of miles
- From two to six years of age, mature salmon will return back to where it was born.
- They prepare themselves and feed themselves at the mouth of the river.

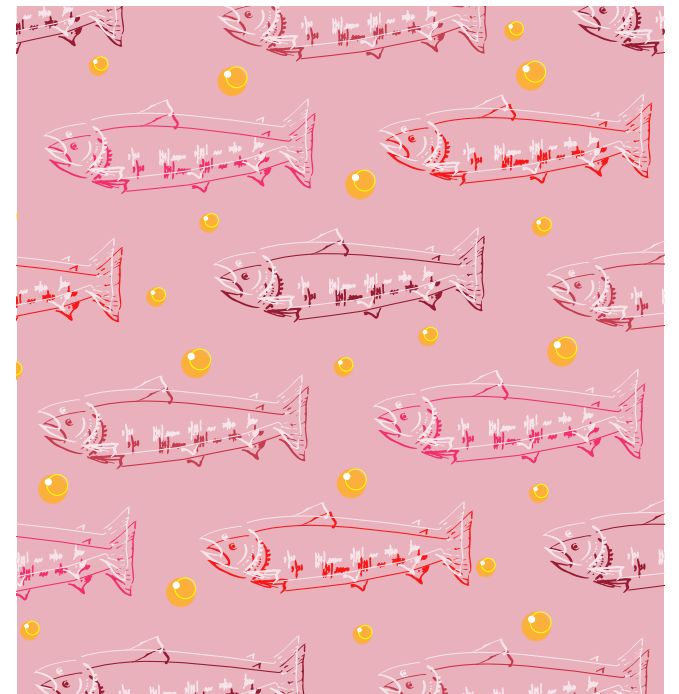
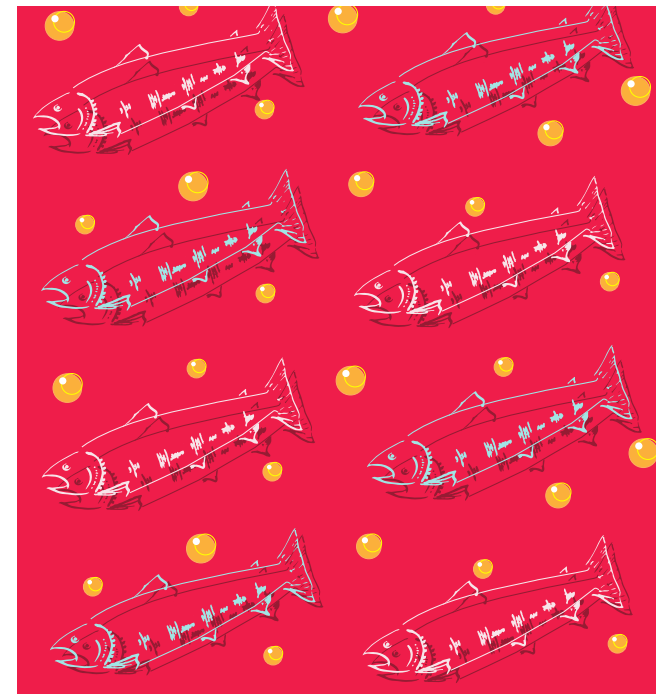
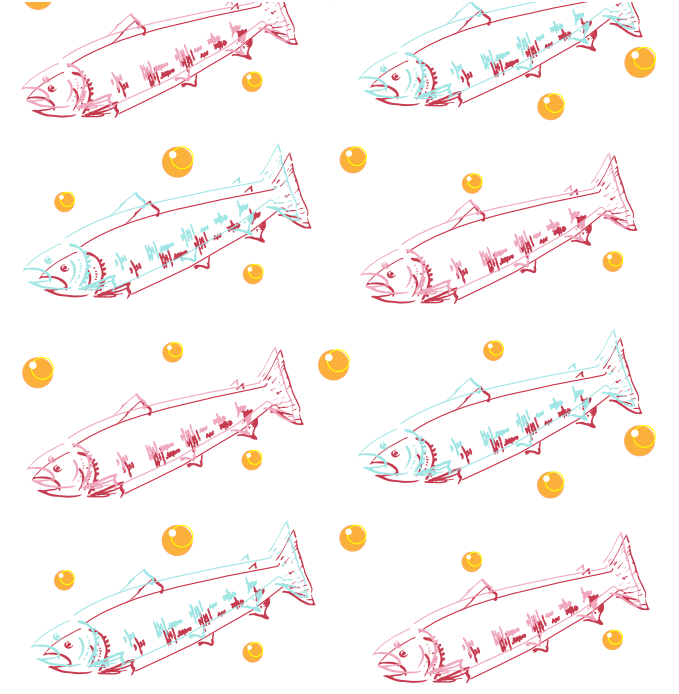
They find there way back home, where they were born to lay their eyes because they believe that place is safe.

Craft Studies

Hand craft- Linoleum block printing studies



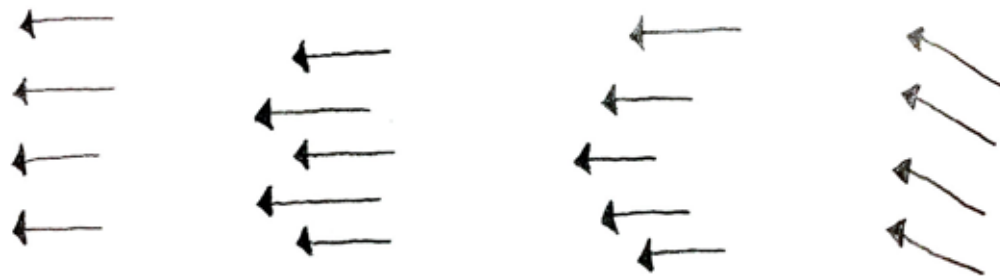
Digital Craft- Illustrator



Design Influences

Themes: Determine and Preseverance

Determines:



Directional - one direction.

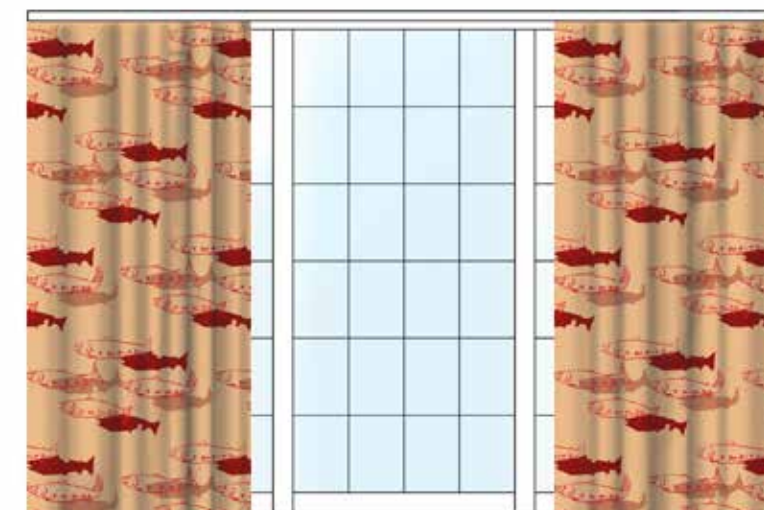
The main theme of my pattern is determined. The salmon is determined to overcome the obstacles, swim nonstop, lay eggs, and died to start the next generation. The pattern will include both the salmon and the eggs. The salmon is the main motif and the eggs are the background motif. Since the intended use of my pattern is drapery, my pattern will need to be able to go with the folds that is created by the drapery. The folds will make my salmon pattern looks like it is swimming.

Intended use

Textile- drapery

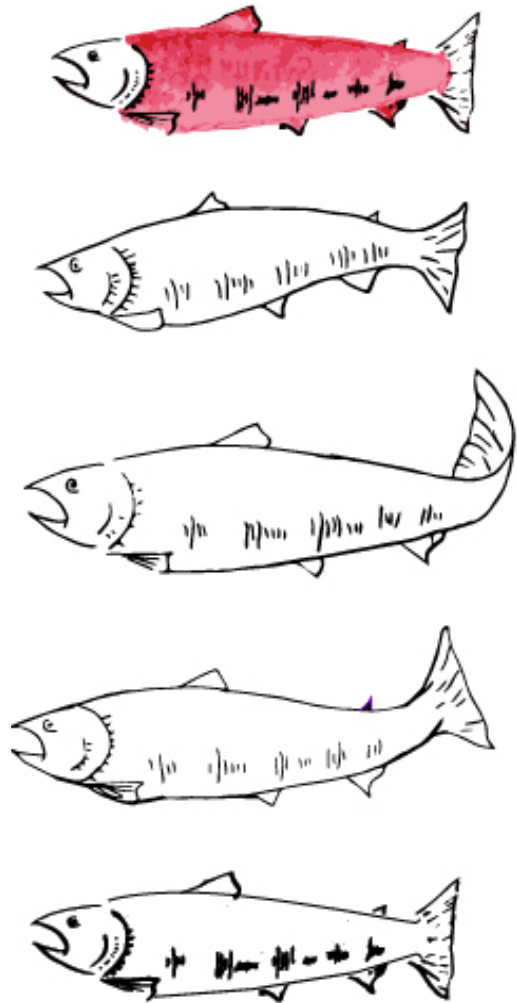
My intended use of my pattern is as drapery hang on the living room windows of the house that is located along the side of the river that I saw the salmon run.

There is one specific house that is located right near the dam of where I saw the salmon run, called Molson Mill.

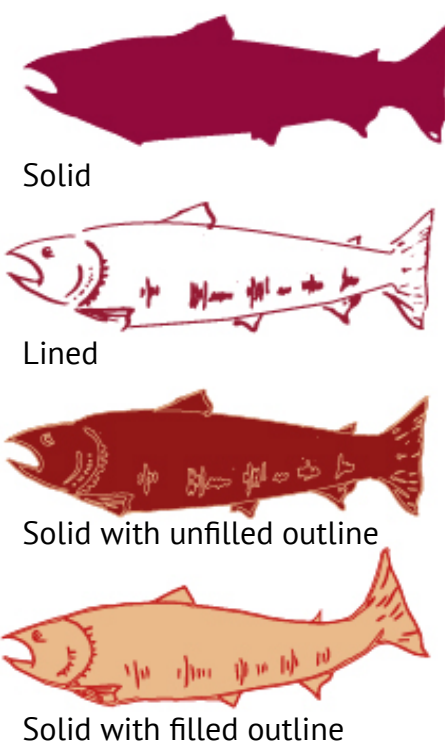


Pattern Development

Salmon movement studies



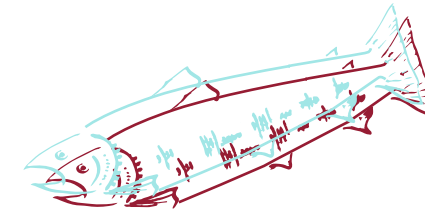
Salmon motif studies



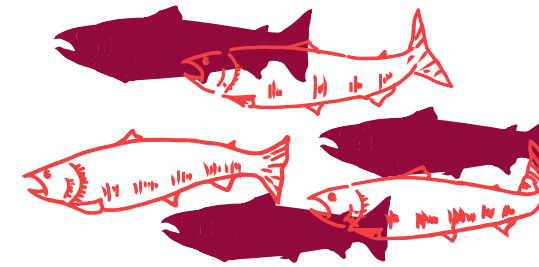
Salmon egg studies



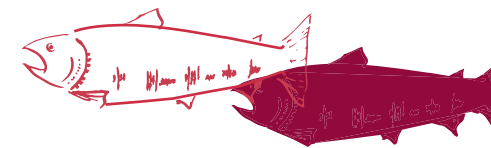
Arrangement studies: foreground salmon motif



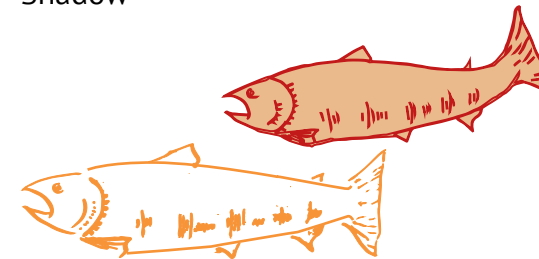
Layering of two different colors



Foreground and background

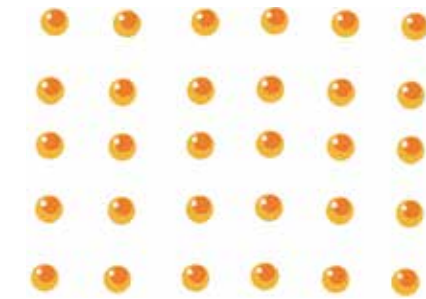


Shadow

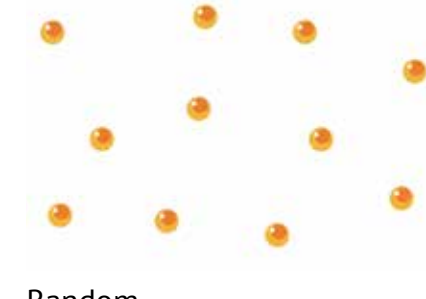


Different fish motifs

Arrangement studies: background egg motif



Align

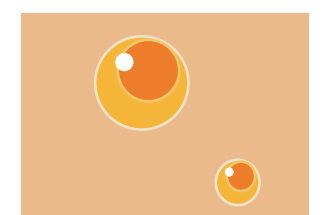
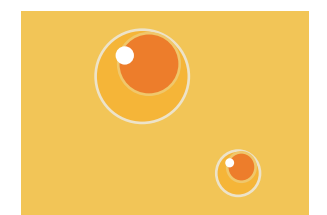
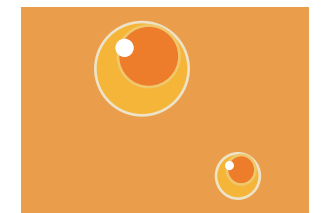
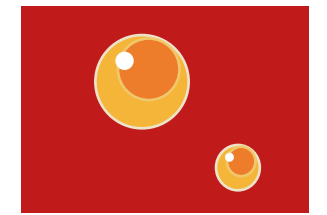
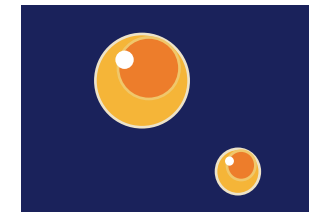


Random

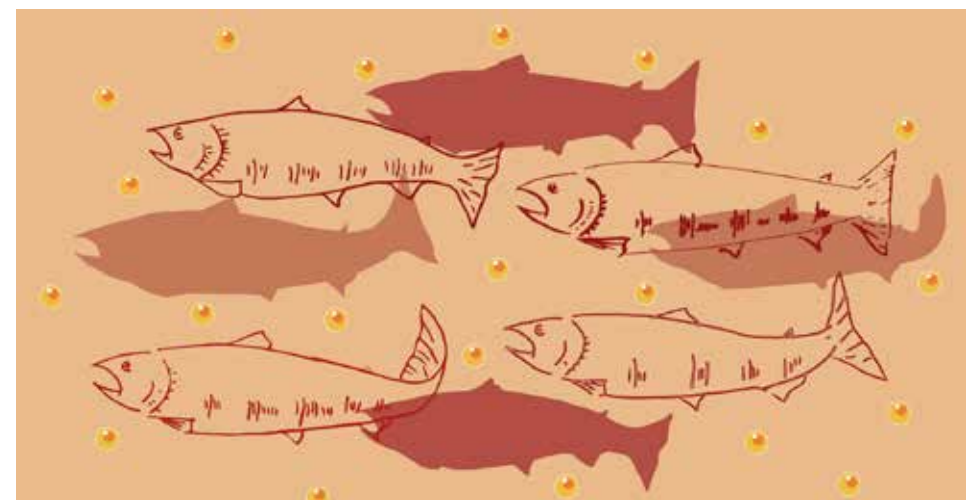
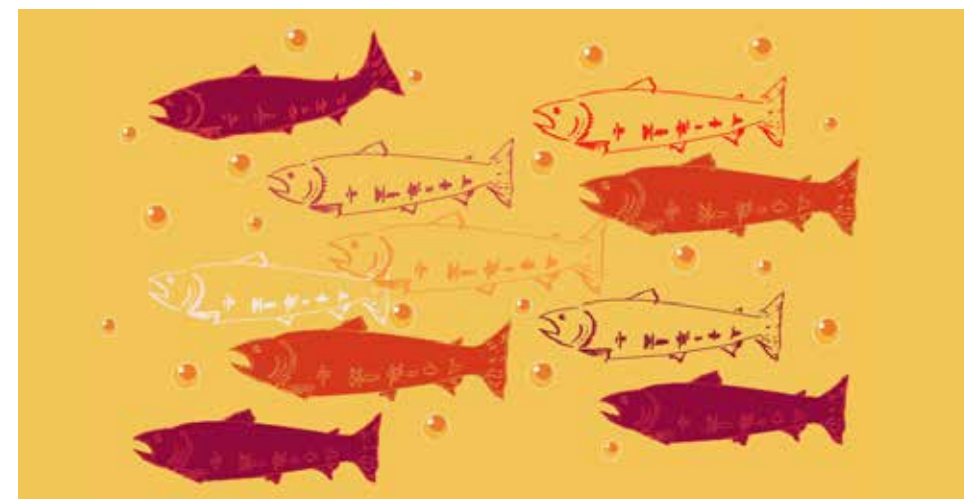
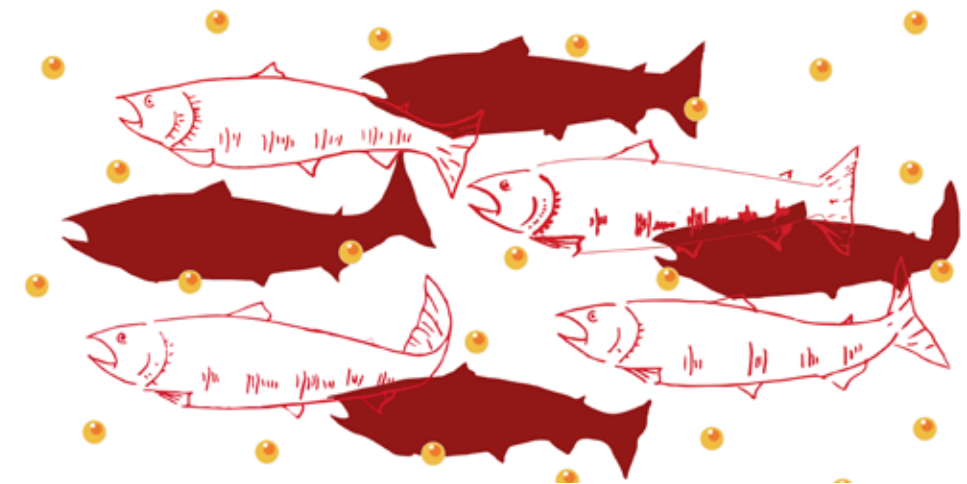
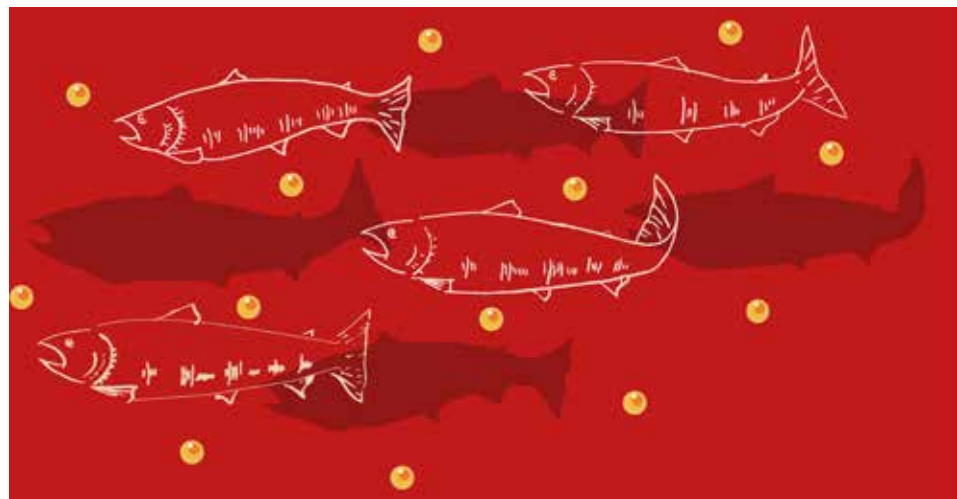
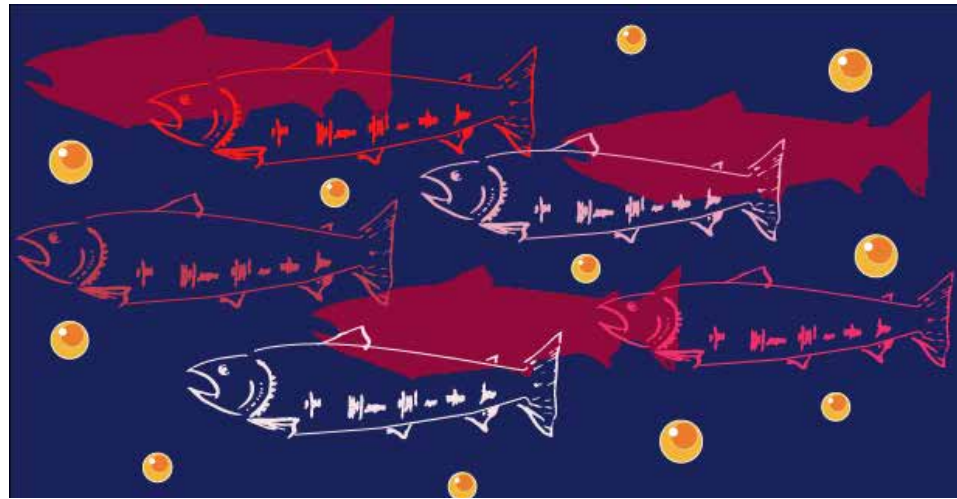


Angled and different scale

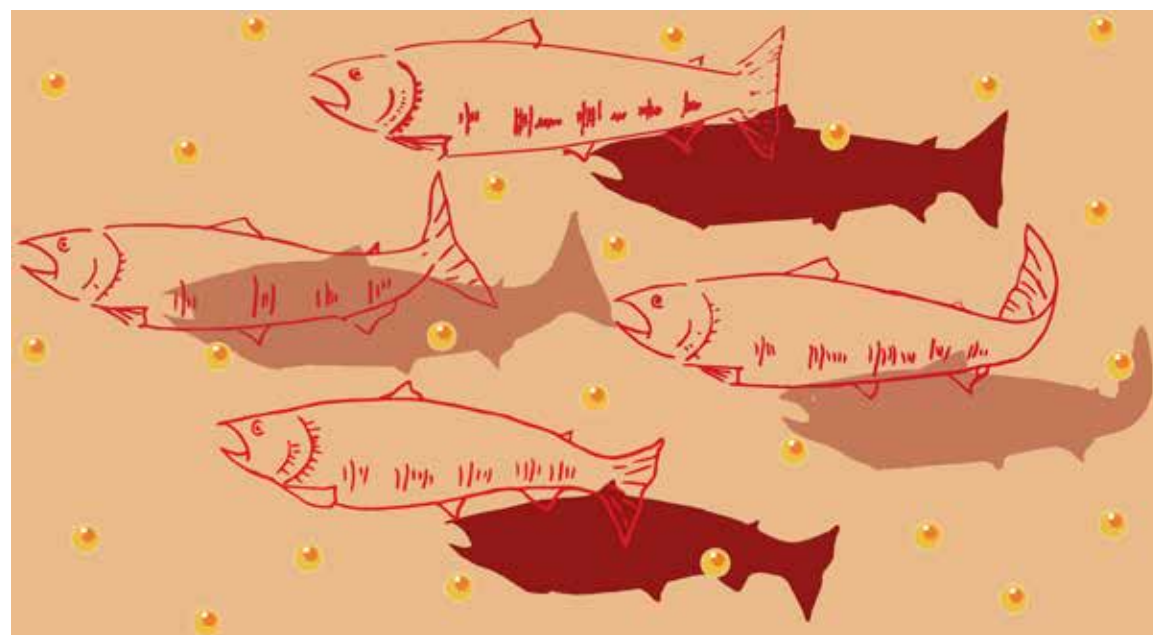
Color contrast studies: background egg motif



Final Development



Final Product



Final pattern repeat: 16.5" horizontal x 9" vertical

