

# Twelve-month outcomes of transapical transcatheter aortic valve implantation in patients with severe aortic valve stenosis

Łukasz Wiewiórka<sup>1</sup>, Robert Sobczyński<sup>2</sup>, Jarosław Trębacz<sup>1</sup>, Jerzy Sadowski<sup>3</sup>, Dariusz Dudek<sup>4</sup>, Maciej Stąpór<sup>1,5</sup>, Janusz Konstancy-Kalandyk<sup>3</sup>, Robert Musiał<sup>6</sup>, Andrzej Gackowski<sup>5,7</sup>, Krzysztof Malinowski<sup>8</sup>, Paweł Kleczyński<sup>9</sup>, Krzysztof Żmudka<sup>9</sup>, Bogusław Kapelak<sup>3</sup>, Jacek Legutko<sup>9</sup>

<sup>1</sup>Department of Interventional Cardiology, John Paul II Hospital, Krakow, Poland

<sup>2</sup>Department of Cardiac Surgery and Transplantation, John Paul II Hospital, Krakow, Poland

<sup>3</sup>Jagiellonian University Medical College, Institute of Cardiology, Department of Cardiac Surgery and Transplantation, John Paul II Hospital, Krakow, Poland

<sup>4</sup>Jagiellonian University Medical College, Institute of Cardiology, Krakow, Poland

<sup>5</sup>Noninvasive Cardiovascular Laboratory, John Paul II Hospital, Krakow, Poland

<sup>6</sup>Department of Anaesthesiology and Intensive Therapy, John Paul II Hospital, Krakow, Poland

<sup>7</sup>Jagiellonian University Medical College, Institute of Cardiology, Department of Coronary Artery Disease and Heart Failure, John Paul II Hospital, Krakow, Poland

<sup>8</sup>2<sup>nd</sup> Department of Cardiology, Jagiellonian University Medical College, Krakow, Poland

<sup>9</sup>Jagiellonian University Medical College, Institute of Cardiology, Department of Interventional Cardiology, John Paul II Hospital, Krakow, Poland

Adv Interv Cardiol 2021; 17, 1 (63): 68–74  
DOI: <https://doi.org/10.5114/aic.2021.104771>

## Abstract

**Introduction:** Transapical access (TA) transcatheter aortic valve implantation (TAVI) (TA-TAVI) represents one of the possible routes in patients with severe aortic stenosis (AS) who are not suitable for transfemoral access.

**Aim:** To assess early- and mid-term clinical outcomes after TA-TAVI.

**Material and methods:** Patients with severe symptomatic AS undergoing TA-TAVI from November 2008 to December 2019 were enrolled. Clinical and procedural characteristics as well as clinical outcomes including all-cause mortality during 12-month follow-up were assessed.

**Results:** Sixty-one consecutive patients underwent TA-TAVI for native AS. Patients were elderly with median age of 80.0 (76.0–84.0) years; 55.7% were males. Median baseline EuroSCORE I and STS scores were 18.2% (11.6–27.7) and 4.8% (3.3–8.2), respectively. The procedural success rate was 96.7%. In-hospital, 30-day and 12-month mortality rates were 9.8%; 18.0% and 24.6%, respectively. The main periprocedural and in-hospital complications were bleeding complications (14.8%). The following factors were associated with 12-month mortality: previous cerebrovascular event (CVE), glomerular filtration rate (GFR), aortic valve area (AVA), right ventricular systolic pressure (RVSP) and serum level of N-terminal prohormone of brain natriuretic peptide (NT-proBNP) (RR for CVE 3.17, 95% confidence interval (CI): 1.15–8.76:  $p = 0.026$ ; RR for AVA per 0.1 cm<sup>2</sup> 1.28, 95% CI: 1.03–1.55:  $p = 0.024$ ; RR for GFR per 1 ml/min 0.96: 95% CI: 0.94–0.99:  $p = 0.007$ ; RR for NT-proBNP per 1000 pg/ml 1.07: 95% CI: 1.01–1.17:  $p = 0.033$ ; RR for RVSP per 1 mm Hg 1.07: 95% CI 1.02–1.16:  $p = 0.011$ ).

**Conclusions:** Transapical TAVI in high-risk patients provides good hemodynamic results with acceptable outcomes.

**Key words:** aortic stenosis, high-risk patients, outcomes, transcatheter aortic valve implantation, transapical.

## Summary

Transapical transcatheter aortic valve implantation in patients who are not suitable for a transfemoral approach gives a good hemodynamic result with significant clinical improvement. History of cerebrovascular event, impaired renal function, aortic valve area, increased NT-proBNP and right ventricular systolic pressure level may be associated with higher mortality at the 12-month follow-up.

## Corresponding author:

Łukasz Wiewiórka MD, Department of Interventional Cardiology, John Paul II Hospital, 31-202 Krakow, Poland, e-mail: [drlucwie@gmail.com](mailto:drlucwie@gmail.com)

**Received:** 15.11.2020, **accepted:** 13.02.2021.

## Introduction

Aortic valve stenosis (AS) is the most common valvular disease, the frequency of which significantly increases with age. In patients older than 75 years, the incidence of 3.4% for severe AS represents a serious healthcare issue in Europe and in the United States [1–3]. For many years, a surgical valve replacement was the only effective method for AS treatment. Therefore, high risk surgery patients were very often left untreated and scheduled for pharmacological treatment [4]. Since the first endovascular implantation in 2002, transcatheter aortic valve implantation (TAVI) has become a valuable method for non-operable patients and an alternative to conventional surgical replacement [2]. During wider implementation of transcatheter heart valves, several approaches for TAVI were introduced. The transfemoral approach (TF) is the most common access route associated with the most favorable clinical outcomes [2, 5]. Patients undergoing TAVI constitute a very frail population with multiple comorbidities [6]. Computed tomography for access site evaluation often reveals diffuse severe atherosclerosis with massive calcifications and tortuosity in the iliofemoral region, which is a contraindication for femoral access. Transapical access (TA) represents one of the possible routes in patients who are not suitable for TF access. However, due to more aggressive intervention compared to the TF route and the need for general anesthesia as well as the higher risk profile of patients treated with TA, the apical approach is not often used nowadays and therefore many questions remain about the safety and clinical outcomes [7, 8].

## Aim

The aim of our study was to assess early- and mid-term clinical outcomes after TA-TAVI in patients with severe AS.

## Material and methods

A total of 61 consecutive high-risk elderly patients with severe symptomatic AS undergoing TA-TAVI from November 2008 to December 2019 were enrolled. Patient screening and selection were performed by a multidisciplinary Heart Team supported by clinical and imaging data. The clinical decision was based on logistic EuroSCORE I and the Society of Thoracic Surgeons (STS) Score [9]. Clinical assessment also included porcelain aorta, advanced liver cirrhosis, severe neurological impairment and frailty status. All procedures were performed by a cardiac surgeon and interventional cardiologist. All procedures were performed under general anesthesia and using Edwards Sapien, XT and Sapien 3 (Edwards Lifesciences, Irvine, USA) and ACURATE neo (Boston Scientific, Marlborough, USA).

After starting a TAVI program in our center, the number of all procedures annually was relatively low, starting from 30–40. Moreover, the TA route was a predominant access for TAVI, at least during the first year due to factors related to patient characteristics, including extremely high risk patients with multilevel atherosclerosis. Afterwards, TF access was gaining in frequency and we ended up with 120 procedures a year, 95% of which were performed via the TF approach. The number of TA procedures a year was highest between 2008 and 2014, reaching even 16 procedures a year, and since 2015 the number has dropped to 3–5 TA-TAVIs a year.

Baseline characteristics, procedural and outcomes data were collected. Endpoints of the study included all-cause mortality at discharge, 30 days and 12 months. Other endpoints were assessed according to the recommendations of the Valve Academic Consortium (VARC) [10]. The study protocol was approved by the institutional ethical board.

## Statistical analysis

Categorical variables were presented as counts and percentages. Continuous variables were expressed as mean (standard deviation (SD)) or median (interquartile range (IQR)), where applicable. Normality was assessed via the Shapiro-Wilk test. Lifetime data were presented using the Kaplan-Meier estimator and analyzed using the Cox proportional hazards model. Simple models were created for all relevant variables (baseline, demographics). Due to the small number of observations, no multiple regression model was created. Two Kaplan-Meier curves were compared using a log-rank test. Hazard ratios (HR) with 95% confidence intervals (CI) were presented as a result of the Cox regression. Statistical analyses were performed in JMP 15.2.0 (SAS Institute Inc., Cary, NC, USA, 2020)

## Results

Sixty-one consecutive patients underwent TA-TAVI for native AS. Patients were elderly with median age of 80.0 years (76.00–84.0), 55.7% were male and 81.0% had symptoms of heart failure in III/IV class according to the New York Heart Association (NYHA). All patients were considered high risk according to median Logistic EuroSCORE I and STS scores 18.2% (11.6–27.7) and 4.8% (3.3–8.2), respectively. The median aortic valve area (AVA) was 0.70 cm<sup>2</sup> (0.60–0.90) and the median value of the maximal/mean transaortic gradient was 82.0 mm Hg (59.5–93.5)/49.0 (36.0–61.0). Baseline clinical and echocardiographic characteristics are presented in Table I. The procedure success rate was 96.7%. All patients underwent balloon aortic valvuloplasty prior to valve deployment. All patients received only one prosthesis, so no valve-in-valve procedure was necessary. In 1 case a second valve was used due to problems with the delivery

**Table I.** Baseline characteristics of patients

| Parameter                              | Apical access (n = 61) |
|--|------------------------|
| Age, median (IQR) [years]              | 80.0 (76.0; 84.0)      |
| Weight, median (IQR) [kg]              | 72.5 (60.8; 79.5)      |
| BMI, median (IQR) [kg/m <sup>2</sup> ] | 26.20 (24.7; 29.0)     |
| Male, n (%)                            | 34 (55.7)              |
| Diabetes mellitus, n (%)               | 27 (45.0)              |
| Atrial fibrillation, n (%)             | 22 (36.7)              |
| Hypertension, n (%)                    | 56 (93.3)              |
| CVE, n (%)                             | 11 (18.0)              |
| COPD, n (%)                            | 12 (20.0)              |
| PCI, n (%)                             | 14 (33.3)              |
| CABG, n (%)                            | 17 (27.9)              |
| GFR, mean ± SD [ml/min]                | 54.0 ±21.0             |
| NT pro BNP, median (IQR) [pg/ml]       | 1336.0 (743.0; 8313.5) |
| Creatinine, median (IQR) [mmol/l]      | 90 (76.0; 109.0)       |
| Hemoglobin, mean ± SD [g/dl]           | 11.2 ±1.8              |
| Logistic EuroSCORE, median (IQR) (%)   | 18.2 (11.6; 27.7)      |
| EuroSCORE 2, median (IQR) (%)          | 5.3 (3.0; 9.0)         |
| STS, median (IQR) (%)                  | 4.8 (3.3; 8.2)         |
| Ejection fraction, median (IQR) (%)    | 55.0 (45.0; 64.5)      |
| AVA, median (IQR) [cm <sup>2</sup> ]   | 0.70 (0.60; 0.90)      |
| AVPG, median (IQR) [mm Hg]             | 82.0 (59.5; 93.5)      |
| AVMG, median (IQR) [mm Hg]             | 49.0 (36.0; 61.0)      |
| RVSP [mm Hg]                           | 42.00 (33.0; 57.0)     |

Data are presented as number and percentage. AVA – aortic valve area, AVMG – aortic valve mean gradient, AVPG – aortic valve peak gradient, BMI – body mass index, CABG – coronary artery bypass grafting, COPD – chronic obstructive pulmonary disease, CVE – cerebrovascular event – stroke or transient ischemic attack, EuroSCORE – European System for Cardiac Operative Risk Evaluation, GFR – glomerular filtration ratio, IQR – interquartile range, NT pro-BNP – N terminal pro B type natriuretic peptide, PCI – percutaneous coronary intervention, STS – Society of Thoracic Surgeons, RVSP – right ventricular systolic pressure.

system. Conversion to open heart surgery was required in 2 cases, in 1 patient due to a severe paravalvular leak and in the second one due to a problem with apex cannulation. Procedural data and results are presented in Table II. All of the complications are presented in Table III. The remaining procedures were successful, with a good echocardiographic result. Median maximal and mean gradient values were 14.0 mm Hg (10.2–21.0) and 8.00 mm Hg (5.7–12.0), respectively. We found slightly lower median left ventricle ejection fraction at discharge than admission, 55.0 % (45.0–64.5) vs. 50.0% (43.5–60.0),  $p = 0.007$ . In most cases, we found at most only mild regurgitation of bioprosthesis, 90.2%. Periprocedural stroke occurred in 1 case, as did myocardial infarction. Although complications related to apex cannulation did not occur, the bleeding complication rate was 14.8%, while the need of transfusion of packed red blood cells occurred in 39.3%. Major bleeding complications were

**Table II.** Procedural data

| Parameter                               | Result              |
|---|---------------------|
| Procedure duration, median (IQR) [min ] | 115 (95; 152.5)     |
| Radiation dose [mGy]                    | 392 (228; 631.5)    |
| Contrast agent [ml]                     | 150 (103.75; 200.0) |
| Valve type, n (%):                      |                     |
| Balloon expandable                      | 42 (68.8)           |
| Self-expandable                         | 19 (31.2)           |
| AVPG, median (IQR) [mm Hg]              | 14.0 (10.2; 21.0)   |
| AVMG, median (IQR) [mm Hg]              | 8.0 (5.8; 12.00)    |
| Ejection fraction (%), median (IQR)     | 50.0 (43.5; 60.0)   |
| PVL, n (%):                             |                     |
| None                                    | 32 (52.5)           |
| Mild                                    | 23 (37.7)           |
| Moderate                                | 1 (1.6)             |
| Severe                                  | 1 (1.6)             |

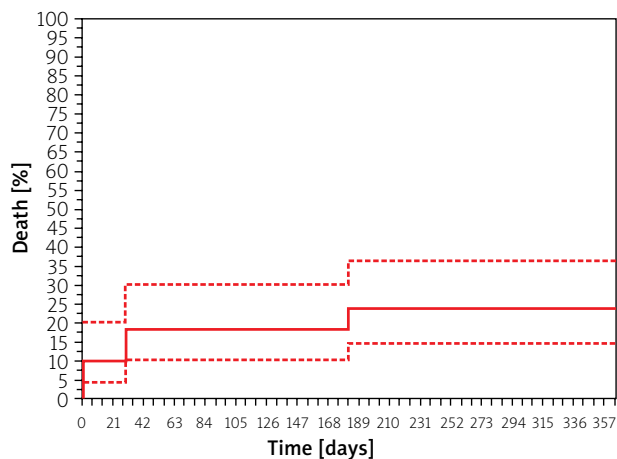
AVMG – aortic valve mean gradient, AVPG – aortic valve peak gradient, IQR – in-terquartile range, PVL – perivalvular leak.

**Table III.** Major periprocedural complications. Data are presented as number and percentage

| Complications                 | n (%)     |
|-------------------------------|-----------|
| Valve displacement            | 0         |
| Second valve, bailout         | 1 (1.6)   |
| AVB requiring PM <sup>1</sup> | 4 (6.6)   |
| Cardiogenic shock             | 4 (6.6)   |
| Conversion to surgery         | 2 (3.4)   |
| Cardiac tamponade             | 2 (3.6)   |
| VARC 2 bleeding complications | 9 (14.8)  |
| Major                         | 8 (88.9)  |
| Minor                         | 1 (11.1)  |
| Acute renal failure           | 5 (8.2)   |
| Blood transfusion             | 24 (39.3) |
| Myocardial infarction         | 1 (1.6)   |
| Stroke                        | 1 (1.6)   |

PM – pacemaker, <sup>1</sup>During in-hospital stay.

mostly associated with a second vascular access for pig-tail insertion ( $n = 3$ ). Two cases were associated with prolonged drainage from the index access site. Our registry showed that the need for pacemaker (PM) implantation, during index hospital stay after TAVI, occurred in 6.6%. Similarly, PM implantation was required in 6.6% of patients before the procedure, while on the waiting list. Six (9.8%) patients died during the index hospital stay. Three patients died due to bleeding complications related to gastrointestinal bleeding and retroperitoneal hematoma. In 2 cases septic shock and in one myocardial infarction were causes of 3 subsequent deaths. The 30-day mortality rate was 18.0%, and all-cause mortality at 12 months was 24.6% (Figure 1). Further analysis revealed factors



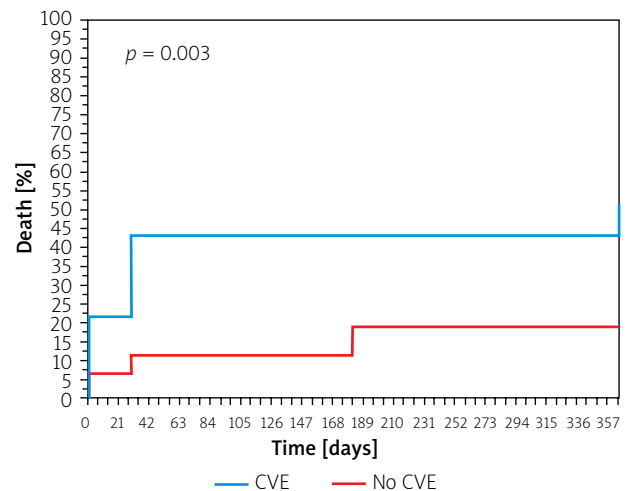
| Total                            | 0 days | 30 days | 182 days | 365 days |
|----------------------------------|--------|---------|----------|----------|
| At risk                          | 59     | 51      | 44       | 34       |
| Cumulative number of events      | 0      | 11      | 14       | 15       |
| Cumulative events percentage (%) | 0.00   | 18.64   | 23.73    | 25.42    |
| Event probability (%)            | 0.00   | 18.98   | 24.50    | 26.72    |

**Figure 1.** Kaplan-Meier curve for cumulative probability of death for entire sample

which had a strong association with 12-month mortality. These were previous CVE (stroke or transient ischemic attack), glomerular filtration rate (GFR), AVA, right ventricular systolic pressure (RVSP) and serum level of N-terminal prohormone of brain natriuretic peptide (NT-proBNP) (RR for CVE 3.17, 95% confidence interval (CI): 1.15–8.76:  $p = 0.026$ ; RR for AVA per  $0.1 \text{ cm}^2$  1.28, 95% CI: 1.03–1.55:  $p = 0.024$ ; RR for GFR per  $1 \text{ ml/min}$  0.96: 95% CI: 0.94–0.99:  $p = 0.007$ ; RR for NT-proBNP per  $1000 \text{ pg/ml}$  1.07: 95% CI: 1.01–1.17:  $p = 0.033$ ; RR for RVSP per  $1 \text{ mm Hg}$  1.07: 95% CI: 1.02–1.16:  $p = 0.011$  (Figure 2). Despite no statistical significance ( $p = 0.07$ ), the NYHA class assessment at 30 days showed great clinical improvement; 93% of survivors were in class I or II. This beneficial effect was maintained after 6 months: 97.6% of patients in class I or II NYHA,  $p = 0.028$ .

### Discussion

Currently, TAVI gives the option for an effective treatment for patients who, according to the Heart Team decision, are not appropriate candidates for surgical aortic valve replacement [5]. While the transfemoral approach gives the best clinical outcomes, it cannot be used in everyone, particularly not in patients with severe iliofemoral atherosclerosis. Atherosclerosis is a systemic disease that included many vascular territories [11]. Peripheral artery disease often coexists with significant carotid artery stenosis [12]. In severe form, such as porcelain aorta, it makes it impossible to even use minimally invasive surgical techniques [13]. In those cases, TA is the



| Group: No                        | 0 days | 30 days | 182 days | 365 days |
|----------------------------------|--------|---------|----------|----------|
| At risk                          | 45     | 40      | 36       | 27       |
| Cumulative number of events      | 0      | 5       | 8        | 8        |
| Cumulative events percentage (%) | 0.00   | 11.11   | 17.78    | 17.78    |
| Event probability (%)            | 0.00   | 11.33   | 18.72    | 18.72    |

| Group: yes                       | 0 days | 30 days | 182 days | 365 days |
|----------------------------------|--------|---------|----------|----------|
| At risk                          | 14     | 11      | 8        | 7        |
| Cumulative number of events      | 0      | 6       | 6        | 7        |
| Cumulative events percentage (%) | 0.00   | 42.86   | 42.86    | 50.00    |
| Event probability (%)            | 0.00   | 42.86   | 42.86    | 51.02    |

**Figure 2.** Kaplan-Meier curve for cumulative probability of death by history of previous cerebrovascular event (CVE)

second choice for transcatheter heart valve delivery, but due to its invasive character, bleeding and other complications remain a relevant concern [14]. After starting a TAVI program in our center, the TA route was a predominant access for TAVI, at least during the first year due to factors related to patient characteristics, including extremely high risk patients with multilevel atherosclerosis, and according to CT-scan assessment TF access was not possible in those cases. Our study confirmed that history of CVE, baseline impaired renal function as well as NT-proBNP, RVSP values and AVA may be associated with increased mortality.

In-hospital, 30-day and 12-month mortality rates were 9.8%, 18.0% and 24.6%, respectively. In hospital mortality, compared to estimated surgical risk according to logistic EuroSCORE I Scale 18.2%, was nearly two times lower. In a registry of all-comers with a similar recruitment timeframe, Bagiński *et al.* observed in-hospital, 30-day, 6-month and 12-month mortality of 6.9%,

10.9%, 15.8% and 17.8%, respectively [15]. The 30-day mortality in the study group was 18%. Some studies show that it can even exceed 20% [16]. On the other hand, in a study by Walter *et al.*, the authors observed lower 30-day mortality with a survival rate of 91%, but with a similar death rate of 27% at 12 months of follow-up. In summary, currently available data showed relatively lower 30-day mortality rate at 12.2 % and only 3.8% in the PARTNER TA group; 12-month mortality was 32.2% and 29.0%, respectively [5, 14]. The 12-month all-cause mortality reached 24.6% but in the present study TA was the only possible method of invasive treatment in the group of patients with many comorbidities. Compared with the group of patients who received conservative treatment in the PARTNER I trial, 12-month mortality in the present study was two times lower (24.6% vs. 50.7%) [5].

In our study, bleeding, in the majority of cases life-threatening, was the most common complication, with a 14.8% frequency, yet complications associated with apex cannulation did not occur. These values are not greater than those available in other registries [17, 18]. Bleeding complication rate may be associated with the fact that the need of anticoagulation in patients with atrial fibrillation (AF) was 36.7%. TA may also be associated with new onset of AF [19]. Larger registries confirmed the impact of AF on bleeding complications [20]. Presence of AF is not only significant in terms of impact for bleeding complications but is strongly related with further mortality. In the FRANCE-2 registry all-cause mortality at 1 year in patients with pre-existing AF was 25.8% and was higher in those without AF [19].

The second most common complication was renal failure, with a 8.2% rate, which was probably associated with surgical trauma and the systemic inflammatory response, as a possible cause of injury [14, 21]. These results were similar to those previously described [18, 22, 23]. Another serious adverse event that may occur during TAVI is stroke [5]. The frequency of periprocedural stroke and myocardial infarction in the study group was at the same level, 1.6%. This low value may be associated with the technical aspect of the procedure performed via the TA approach. The small distance between the sheath inserted through the apex and aortic valve makes positioning and controlled deployment much easier [2]. This fact may also have an impact on further procedure results.

The currently available registries made it possible to create a predictor model of unfavorable outcomes after TAVI. Factors with a significant influence are chronic oxygen therapy, advanced renal failure, atrial fibrillation, poor functional capacity, and decreased baseline cognitive function [24–26]. In our study we found that the history of CVE is strongly related to increased mortality. This fact may be related to TA's more invasive character, which requires general anesthesia and could also cause some rehabilitation problems in the postprocedural peri-

od. Importantly, a history of CVE has been considered as a predictor of poor prognosis after cardiac surgery and included in the Society of Thoracic Surgeons (STS) risk score [24]. On the other hand, previous CVEs were not included in the EuroSCORE II risk score model. However, neither of these risk scores were designed for patients scheduled for TAVI [27].

Elevated RVSP is observed quite frequently in patients with AS [28]. Among patients undergoing TAVI, concomitant PH on echocardiography is found in 20–75% [29]. Also, in patients undergoing surgical aortic valve replacement for AS, baseline PH and its severity are associated with mortality, serious complications, and worse late survival [30]. Thus, patients with very elevated RVSP are often disqualified from surgical valve replacement due to concerns about high peri-operative morbidity and mortality or doubts about whether or not valve replacement will provide any clinical benefit. Data on the impact of PH on outcomes after TAVI are less consistent. In the study by Lindman *et al.* increased RVSP was associated with increased mortality, repeat hospitalizations, and strokes during the first year after TAVI [31]. Barbash *et al.* reported that the presence of RVSP > 50 mm Hg on echocardiography increased the mortality rate immediately after TAVI. In addition, patients with sPAP > 50 mm Hg had a prolonged hospitalization at the intensive care unit [32]. Also, another study confirmed a higher mortality rate at 12 months among patients with elevated RVSP [33]. In contrast, in the FRANCE-2 registry, the 30-day outcome did not differ among 2435 TAVI patients with sPAP < 40, 40–60, and ≥ 60 mm Hg as assessed by echocardiography [34].

Previous studies have confirmed that elevated levels of NT-proBNP may be associated with worse outcomes [35, 36]. Koskinas *et al.* reported that an increased value of NT-pro BNP is associated with a higher risk of all-cause death and cardiovascular death at 2 years and more frequent VARC-2 complications. On the other hand, Ben-Dor *et al.* did not confirm the significant impact of BNP values on further mortality [37]. Moreover, RVSP and NT-proBNP are not included in risk scores such as the logistic EuroSCORE and STS.

Our study had a relatively small sample size. Data were analyzed retrospectively as a registry from a single center.

## Conclusions

Transapical TAVI in patients who are not feasible for a transfemoral approach gives a good hemodynamic result with significant clinical improvement. History of CVE, impaired renal function, AVA, increased NT-proBNP and RVSP level may be associated with higher mortality at the 12 months follow-up.

## Conflict of interest

The authors declare no conflict of interest.

## References

- Baumgartner H, Falk V, Bax JJ, et al. 2017 ESC/EACTS Guidelines for the management of valvular heart disease. *Eur Heart J* 2017; 38: 2739-86.
- Parma R, Zembala MO, Dabrowski M, et al. Transcatheter aortic valve implantation. Expert Consensus of the Association of Cardiovascular Interventions of the Polish Cardiac Society and the Polish Society of Cardio-Thoracic Surgeons, approved by the Board of the Polish Cardiac Society and National Consultants in Cardiology and Cardiac Surgery. *Kardiologia Pol* 2017; 75: 937-64.
- Roberta Pinto SCP. Epidemiology of aortic valve stenosis (AS) and of aortic valve incompetence (AI): is the prevalence of AS/AI similar in different parts of the world? <https://www.escardio.org/Journals/E-Journal-of-Cardiology-Practice/Volume-18/epidemiology-of-aortic-valve-stenosis-as-and-of-aortic-valve-incompetence-ai>. Accessed October 5, 2020.
- Eveborn GW, Schirmer H, Heggelund G, et al. The evolving epidemiology of valvular aortic stenosis. the Tromsø Study. *Heart* 2013; 99: 396-400.
- Leon MB, Smith CR, Mack M, et al. Transcatheter aortic-valve implantation for aortic stenosis in patients who cannot undergo surgery. *N Engl J Med* 2010; 363: 1597-607.
- Kleczynski P, Dziewierz A, Bagiński M, et al. Impact of frailty on mortality after transcatheter aortic valve implantation. *Am Heart J* 2017; 185: 52-8.
- Overtchouk P, Modine T. Alternate access for TAVI: Stay clear of the chest. *Interv Cardiol Rev* 2018; 13: 145-50.
- Nakatsuka D, Tabata M. Transapical approach for transcatheter aortic valve implantation. *Ann Cardiothorac Surg* 2017; 6: 553-4.
- Kleczyński P, Zasada W, Bagiński M, et al. Paravalvular leak after transcatheter aortic valve implantation (TAVI): Short-term results. Data from Polish national POL-TAVI registry. *Cardiol J* 2016; 23: 163-8.
- Kappetein AP, Head SJ, Généreux P, et al. Updated standardized endpoint definitions for transcatheter aortic valve implantation: the Valve Academic Research Consortium-2 consensus document. *J Thorac Cardiovasc Surg* 2013; 145: 6-23.
- Razzouk L, Rockman CB, Patel MR, et al. Co-existence of vascular disease in different arterial beds: Peripheral artery disease and carotid artery stenosis – data from Life Line Screening®. *Atherosclerosis* 2015; 241: 687-91.
- Simons PCG, Algra A, Eikelboom BC, et al. Carotid artery stenosis in patients with peripheral arterial disease: the SMART study. *J Vasc Surg* 1999; 30: 519-25.
- Osaka S, Tanaka M. Strategy for porcelain ascending aorta in cardiac surgery. *Ann Thorac Cardiovasc Surg* 2018; 24: 57-64.
- Madigan M, Atoui R. Non-transfemoral access sites for transcatheter aortic valve replacement. *J Thorac Dis* 2018; 10: 4505-15.
- Bagiński M, Kleczynski P, Dziewierz A, et al. Early- and mid-term outcomes after transcatheter aortic valve implantation. Data from a single-center registry. *Adv Interv Cardiol* 2016; 12: 122-7.
- Elhmidi Y, Bleiziffer S, Piazza N, et al. Long-term results after transcatheter aortic valve implantation: what do we know today? *Curr Cardiol Rev* 2014; 9: 295-8.
- Schymik G, Würth A, Bramlage P, et al. Long-term results of transapical versus transfemoral TAVI in a real world population of 1000 patients with severe symptomatic aortic stenosis. *Circ Cardiovasc Interv* 2015; 8: 1-10.
- Van Der Boon RMA, Marcheix B, Tchetché D, et al. Transapical versus transfemoral aortic valve implantation: a multicenter collaborative study. *Ann Thorac Surg* 2014; 97: 22-8.
- Chopard R, Teiger E, Meneveau N, et al. Baseline characteristics and prognostic implications of pre-existing and new-onset atrial fibrillation after transcatheter aortic valve implantation: results from the FRANCE-2 Registry. *JACC Cardiovasc Interv* 2015; 8: 1346-55.
- Tarantini G, Mojoli M, Windecker S, et al. Prevalence and impact of atrial fibrillation in patients with severe aortic stenosis undergoing transcatheter aortic valve replacement: an analysis from the SOURCE XT prospective multicenter registry. *JACC Cardiovasc Interv* 2016; 9: 937-46.
- Zacharias M, Mugawar M, Herbison GP, et al. Interventions for protecting renal function in the perioperative period. *Cochrane Database Syst Rev* 2013; 2013: CD003590.
- Goebel N, Baumbach H, Ahad S, et al. Transcatheter aortic valve replacement: does kidney function affect outcome? *Ann Thorac Surg* 2013; 96: 507-12.
- Thomas M, Schymik G, Walther T, et al. Thirty-day results of the SAPIEN aortic bioprosthesis European outcome (SOURCE) registry: a European registry of transcatheter aortic valve implantation using the Edwards SAPIEN valve. *Circulation* 2010; 122: 62-9.
- Olszewska-Turek K, Tokarek T, Dziewierz A, et al. Changes in cognitive functions and quality of life in patients after transcatheter aortic valve implantation. *Adv Interv Cardiol* 2020; 16: 82-8.
- Arnold SV, Reynolds MR, Lei Y, et al. Predictors of poor outcomes after transcatheter aortic valve replacement results from the PARTNER (Placement of Aortic Transcatheter Valve) trial. *Circulation* 2014; 129: 2682-90.
- Grevious SN, Fernandes MF, Annor AK, et al. Prognostic assessment of right ventricular systolic dysfunction on post-transcatheter aortic valve replacement short-term outcomes: systematic review and meta-analysis. *J Am Heart Assoc* 2020; 9: e014463.
- Wiktorowicz A, Kleczynski P, Dziewierz A, et al. Impact of pre-procedural cerebrovascular events on clinical outcomes after transcatheter aortic valve implantation in patients with severe aortic stenosis. *Curr Pharm Des* 2018; 24: 641-6.
- Lancellotti P, Magne J, Donal E, et al. Determinants and prognostic significance of exercise pulmonary hypertension in asymptomatic severe aortic stenosis. *Circulation* 2012; 126: 851-9.
- O'Sullivan CJ, Wenaweser P, Ceylan O, et al. Effect of pulmonary hypertension hemodynamic presentation on clinical outcomes in patients with severe symptomatic aortic valve stenosis undergoing transcatheter aortic valve implantation insights from the new proposed pulmonary hypertension classification. *Circ Cardiovasc Interv* 2015; 8: e002358.
- Roselli EE, Abdel Azim A, Houghtaling PL, et al. Pulmonary hypertension is associated with worse early and late outcomes after aortic valve replacement: implications for transcatheter aortic valve replacement. *J Thorac Cardiovasc Surg* 2012; 144: 1067-74.
- Lindman BR, Zajarias A, Maniar HS, et al. Risk stratification in patients with pulmonary hypertension undergoing transcatheter aortic valve replacement. *Heart* 2015; 101: 1656-64.
- Barbash IM, Escarcega RO, Minha S, et al. Prevalence and impact of pulmonary hypertension on patients with aortic stenosis who underwent transcatheter aortic valve replacement. *Am J Cardiol* 2015; 115: 1435-42.

33. Schewel D, Schewel J, Martin J, et al. Impact of transcatheter aortic valve implantation (TAVI) on pulmonary hyper-tension and clinical outcome in patients with severe aortic valvular stenosis. *Clin Res Cardiol* 2015; 104: 164-74.
34. Luçon A, Oger E, Bedossa M, et al. Prognostic implications of pulmonary hypertension in patients with severe aortic stenosis undergoing transcatheter aortic valve implantation study from the france 2 registry. *Circ Cardiovasc Interv* 2014; 7: 240-7.
35. Seoudy H, Frank J, Neu M, et al. Periprocedural changes of NT-proBNP are associated with survival after transcatheter aortic valve implantation. *J Am Heart Assoc* 2019; 8: e010876.
36. Koskinas KC, O'Sullivan CJ, Heg D, et al. Effect of B-type natriuretic peptides on long-term outcomes after transcatheter aortic valve implantation. *Am J Cardiol* 2015; 116: 1560-5.
37. Ben-Dor I, Minha S, Barbash IM, et al. Correlation of brain natriuretic peptide levels in patients with severe aortic stenosis undergoing operative valve replacement or percutaneous transcatheter intervention with clinical, echocardiographic, and hemodynamic factors and prognosis. *Am J Cardiol* 2013; 112: 574-9.