

4-23-2021

Ward 7 and the Hough Neighborhood: Insights from Regional and Local Data

Jim Robey

W.E. Upjohn Institute for Employment Research, jim.robey@upjohn.org

Follow this and additional works at: <https://research.upjohn.org/reports>



Part of the [Labor Economics Commons](#)

Citation

Robey, Jim. 2018. "Ward 7 and the Hough Neighborhood: Insights from Regional and Local Data."

Prepared for the Economic Development Group at FirstEnergy.

<https://research.upjohn.org/reports/257>

This title is brought to you by the Upjohn Institute. For more information, please contact repository@upjohn.org.

Ward 7 and the Hough Neighborhood: Insights from Regional and Local Data

Produced for the Economic Development Group at FirstEnergy

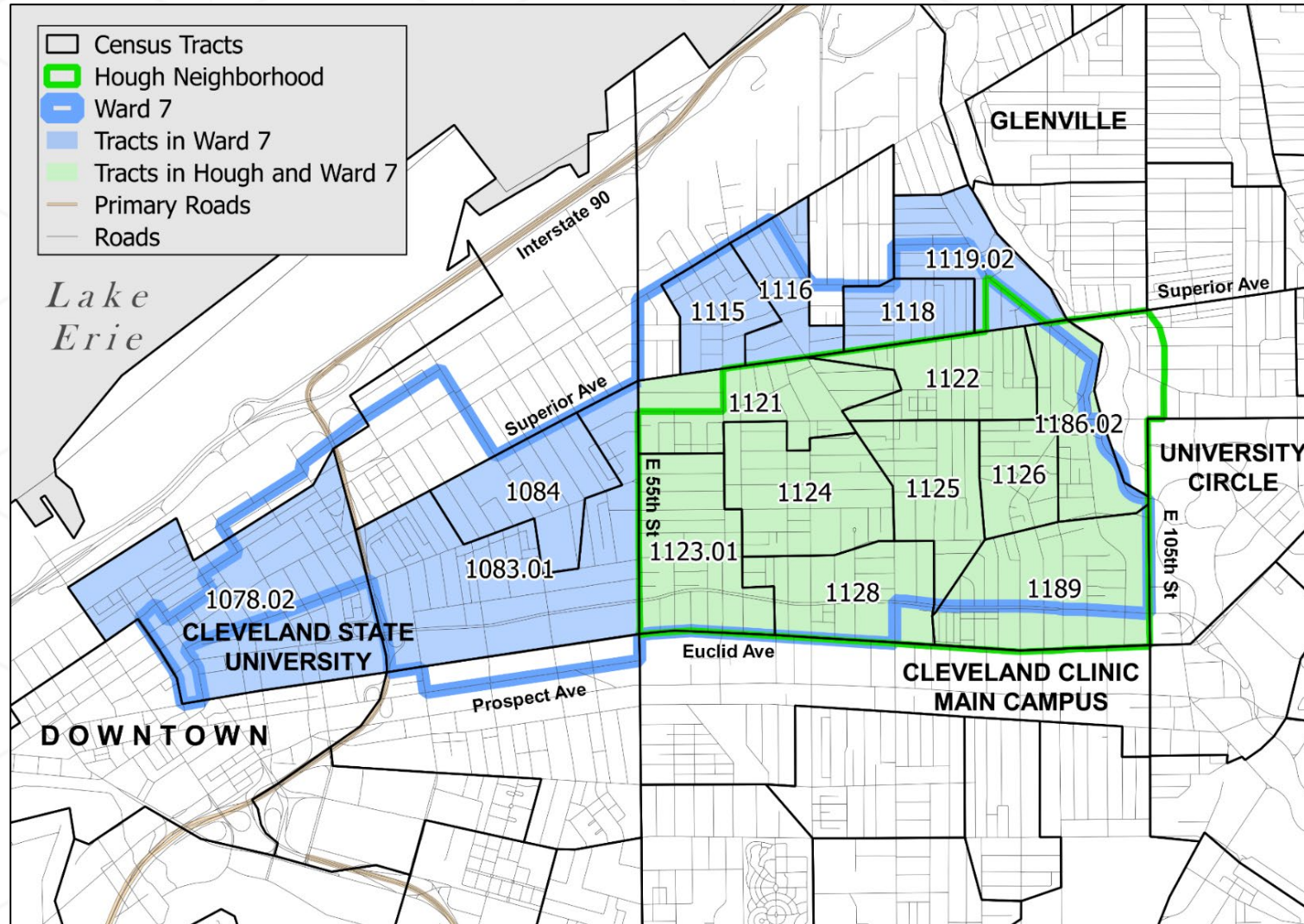
Jim Robey, PhD

Director, Regional Economic Planning Services

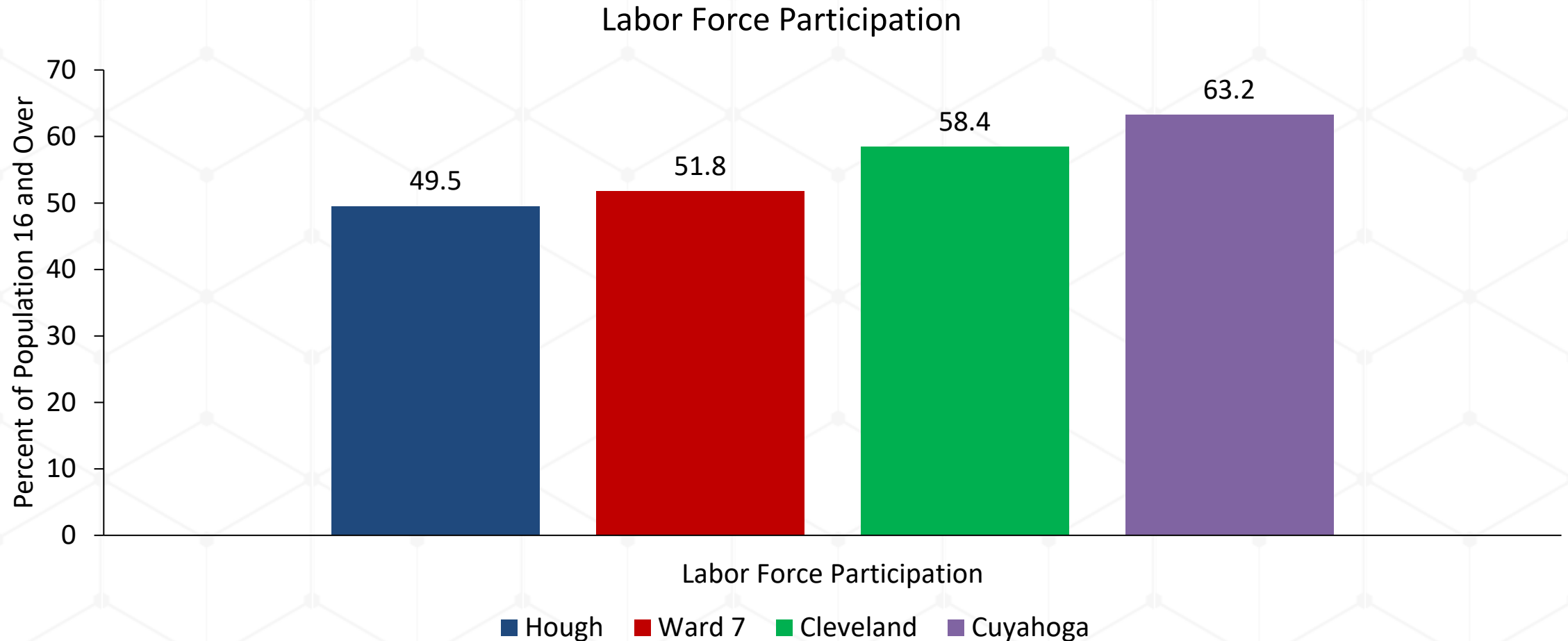
The W. E. Upjohn Institute for Employment Research

April 27, 2018

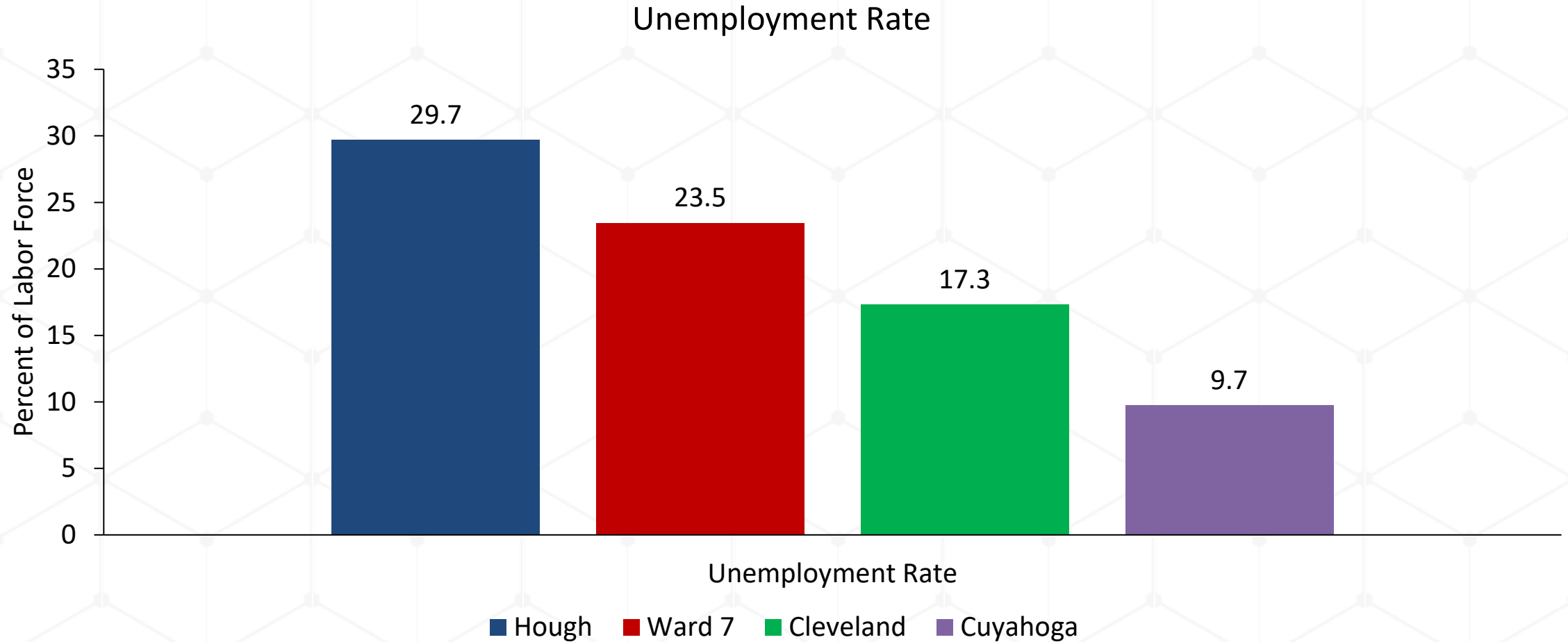
Defining the districts: Ward 7 and Hough Neighborhood



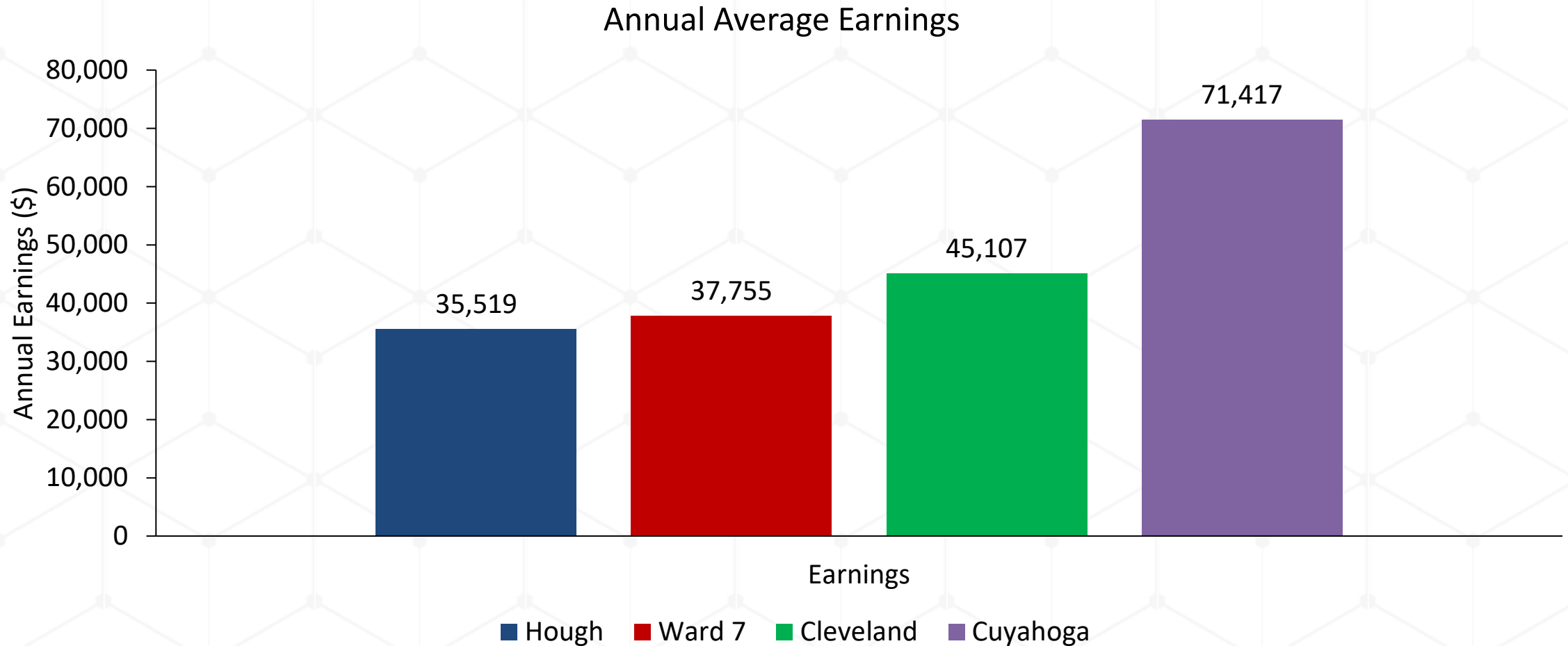
National rate is 62.9%. The gap suggests workers may be available—training and help with barriers could increase local rates



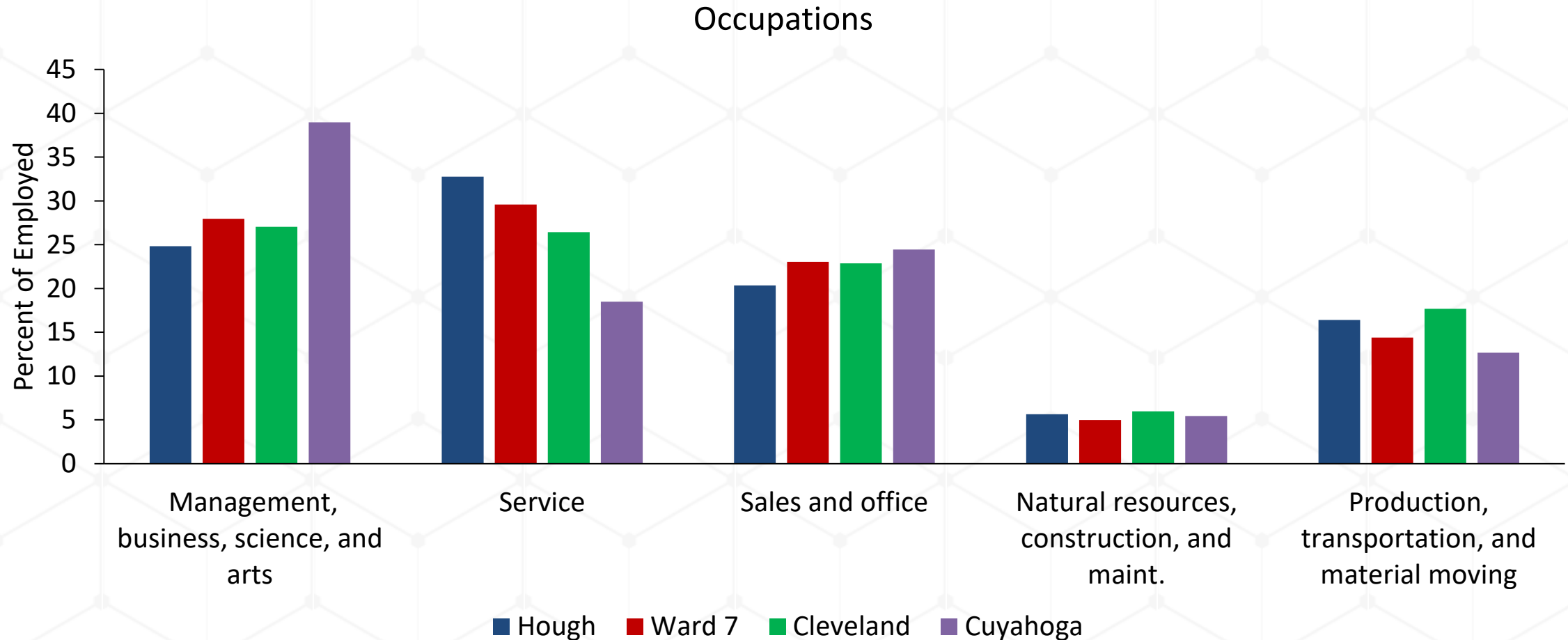
These rates are a four year average from ACS. The February unemployment rate in Cuyahoga County is 5.7



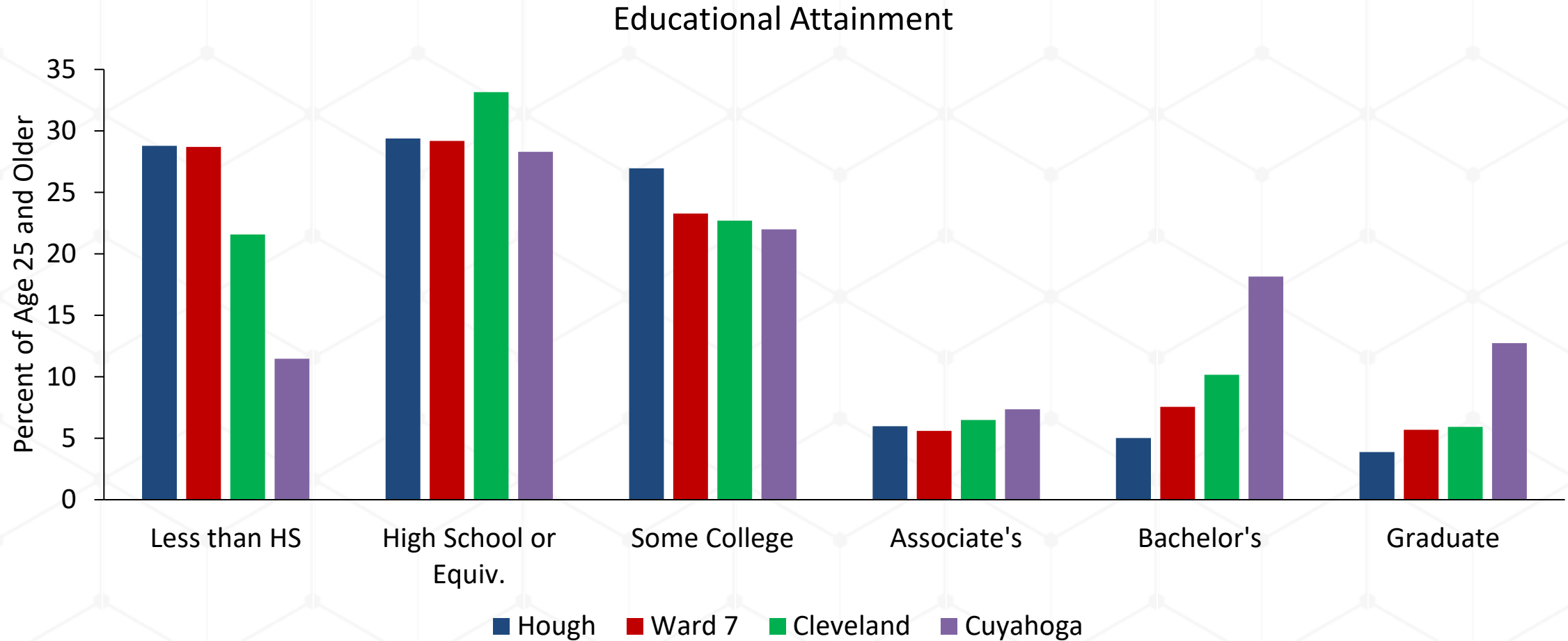
These earnings are per worker and equate to about \$17 per hour for a full time job



Workers in the neighborhood tend to be in more service occupations, but are also strongly in production and materials handling



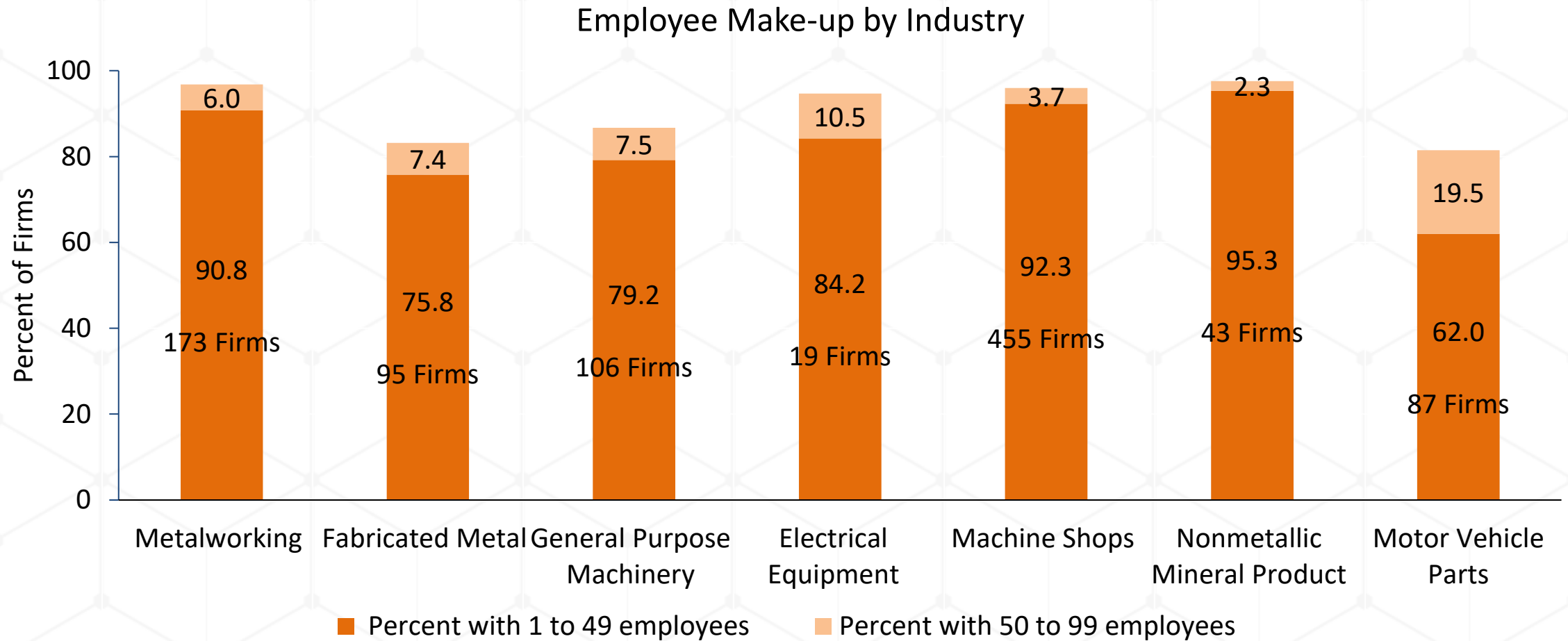
The higher levels of “some college” are interesting. Better understanding skill levels and not competing AA/AS or BA/BS could be helpful



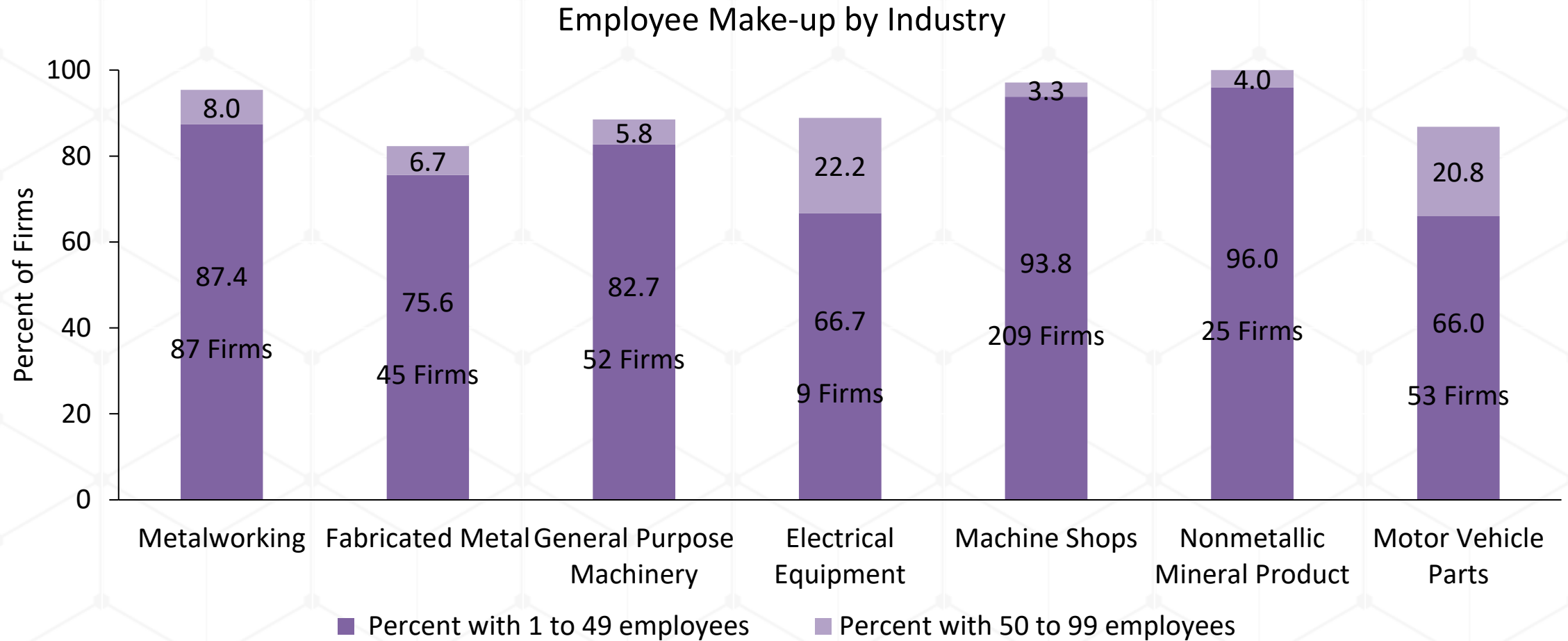
Identify firms with high location quotients—assumes backward and forward linkages are in the region

TARGET INDUSTRIES USING COUNTY BUSINESS PATTERNS

Potential target industries in the Cleveland Metropolitan Statistical Area with location quotients greater than 1.5

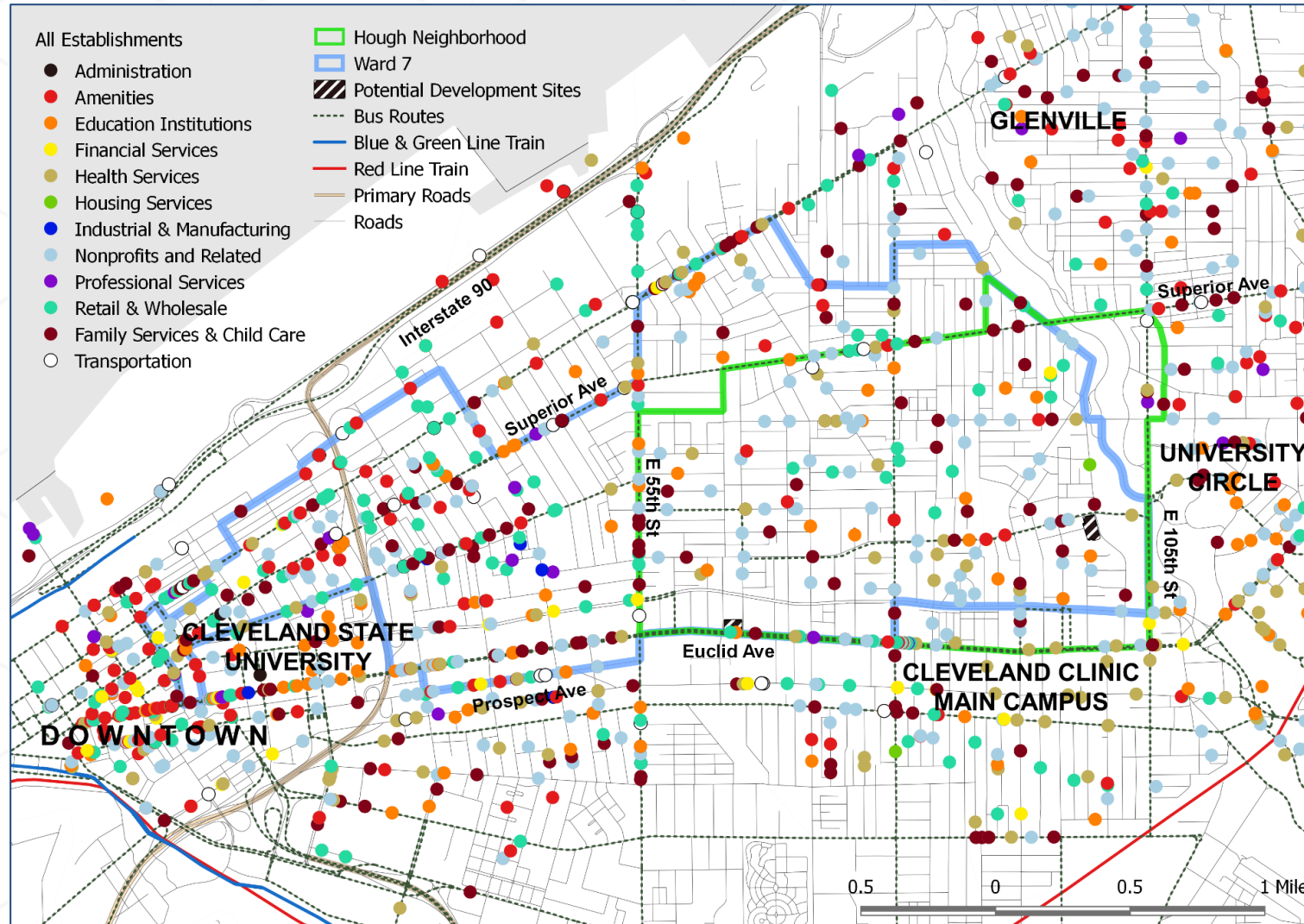


Potential target industries in Cuyahoga County with location quotients greater than 1.5

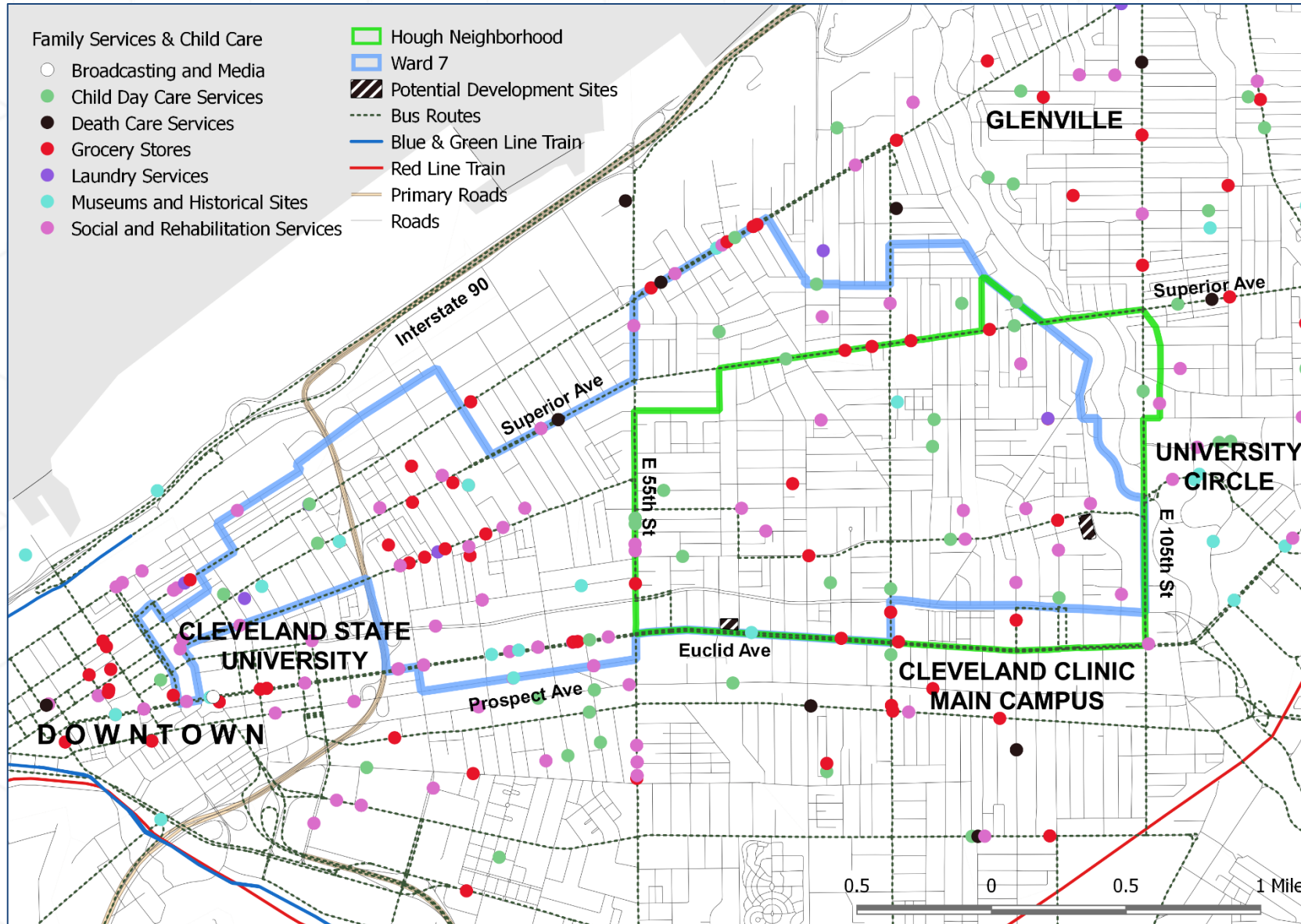


COMPANY AND ORGANIZATION ASSETS WITHIN THE NEIGHBORHOOD AND WARD

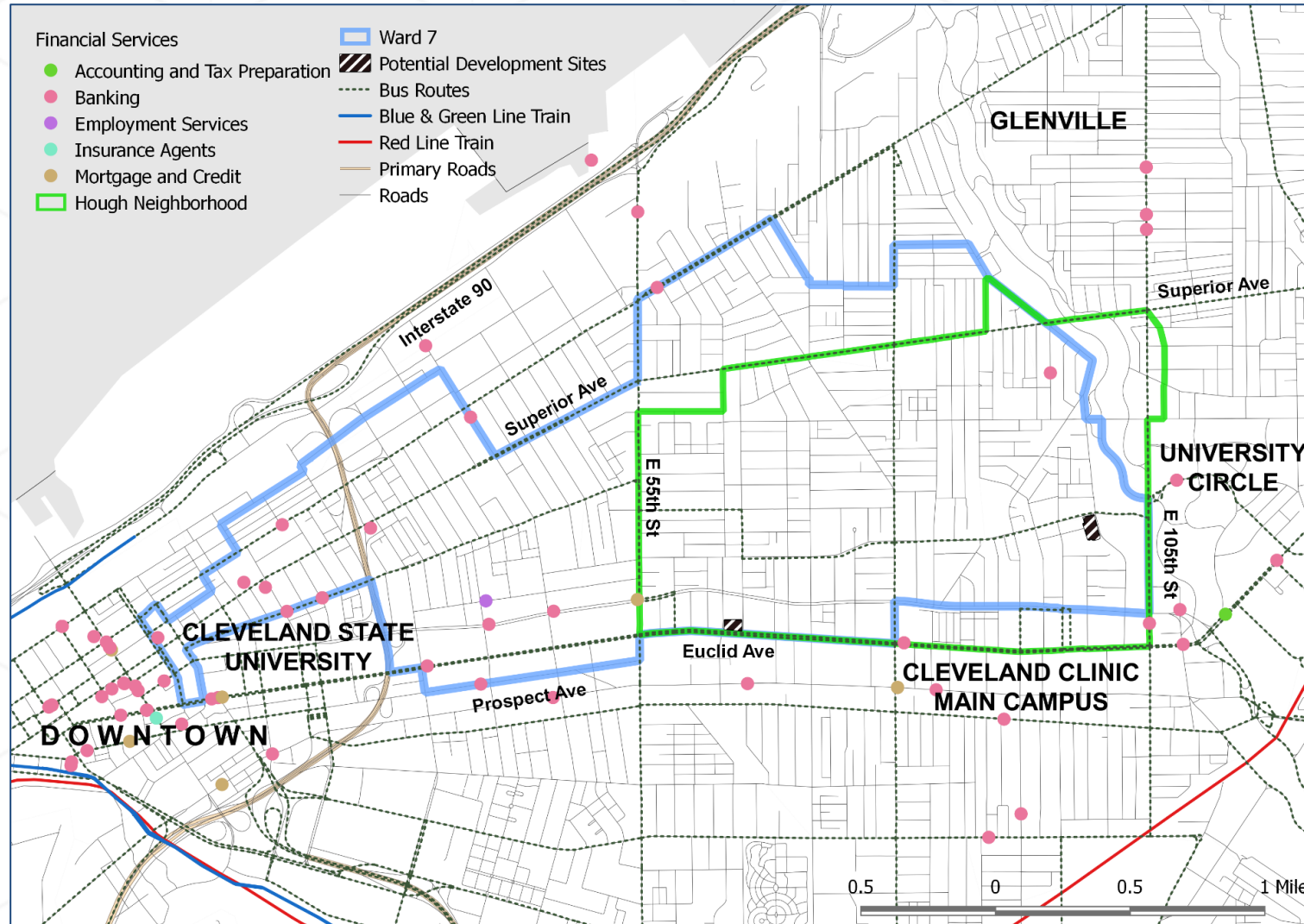
All Establishments



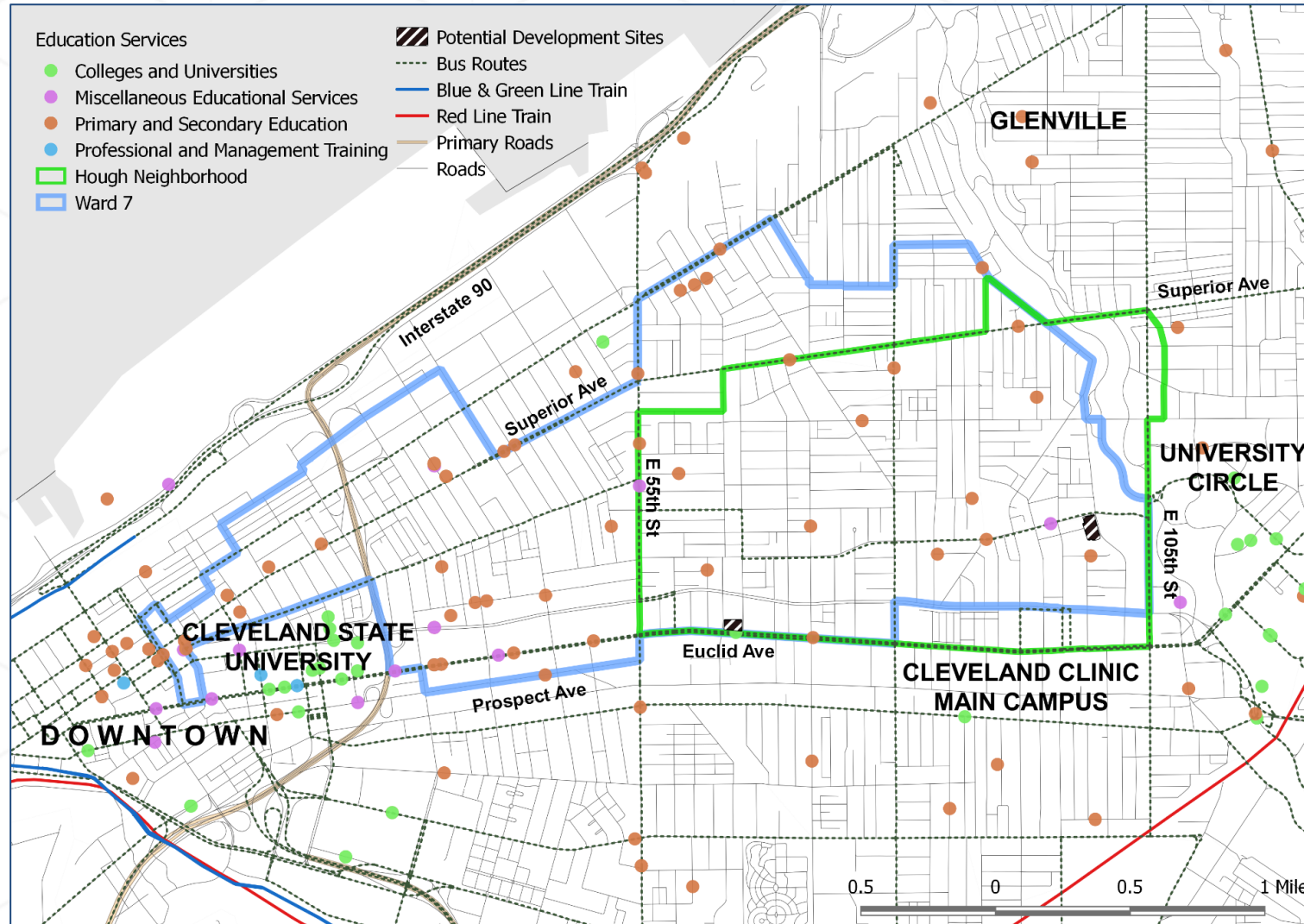
Family Services & Child Care



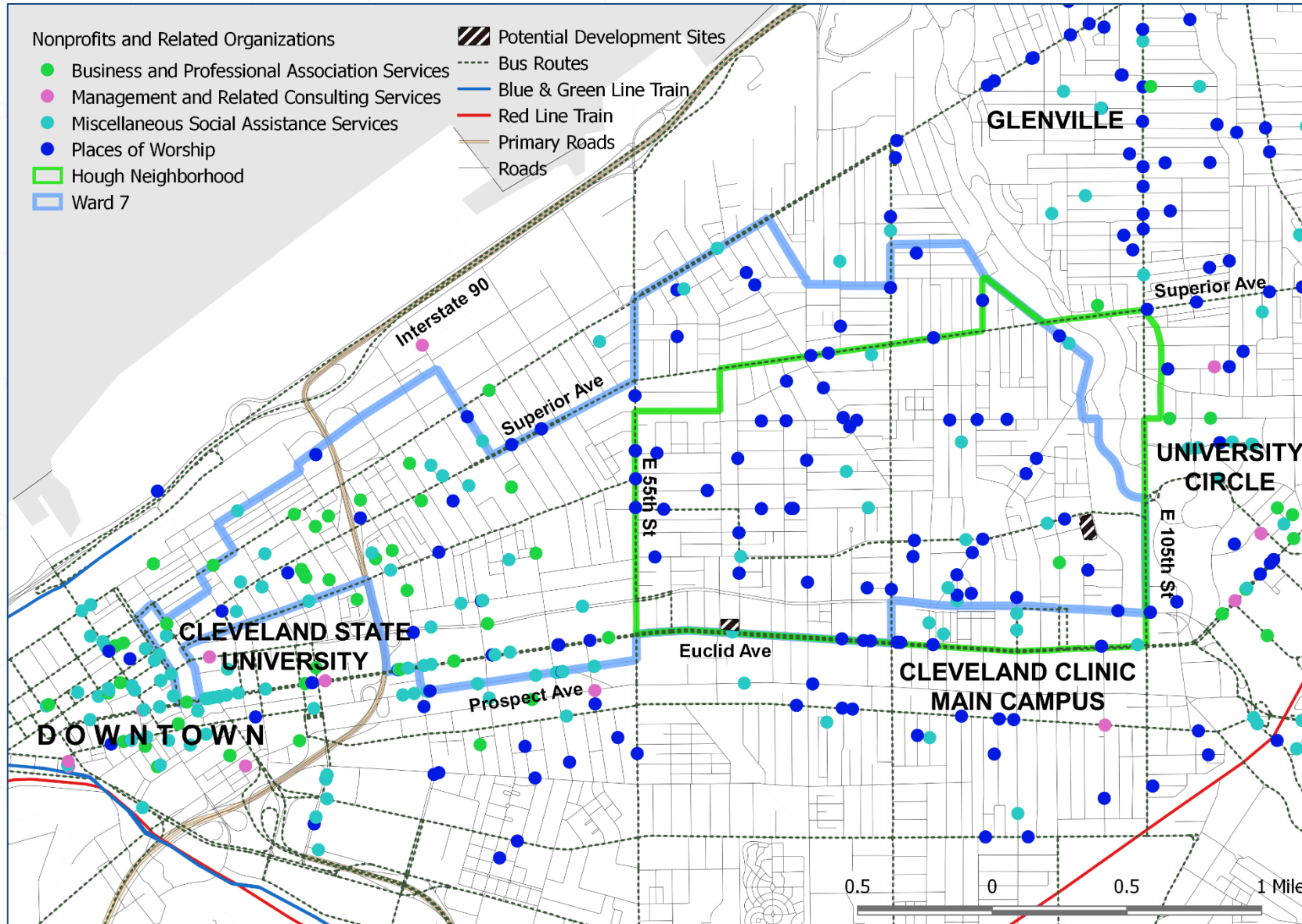
Financial Services



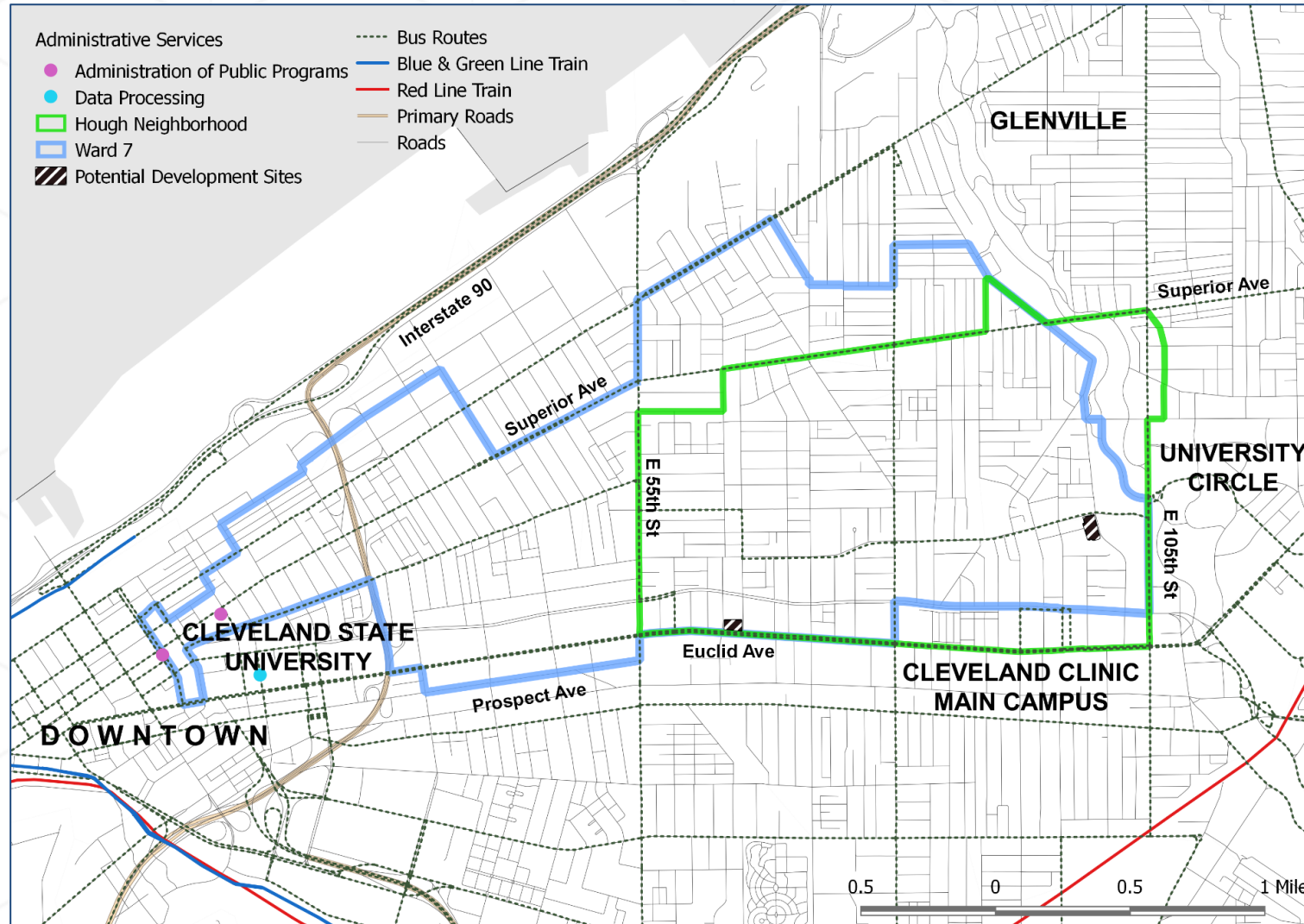
Education Services



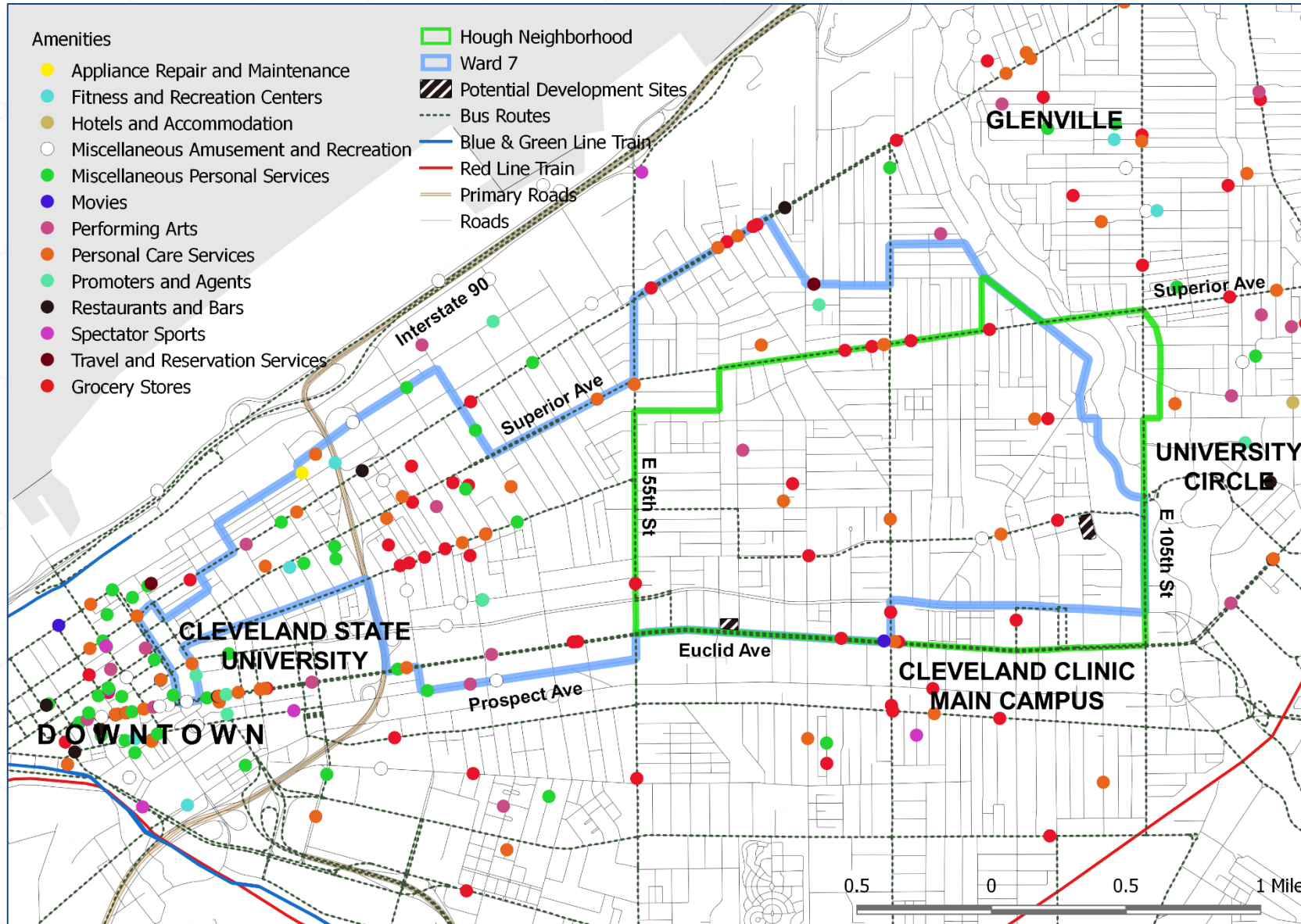
Nonprofits and Related Organizations



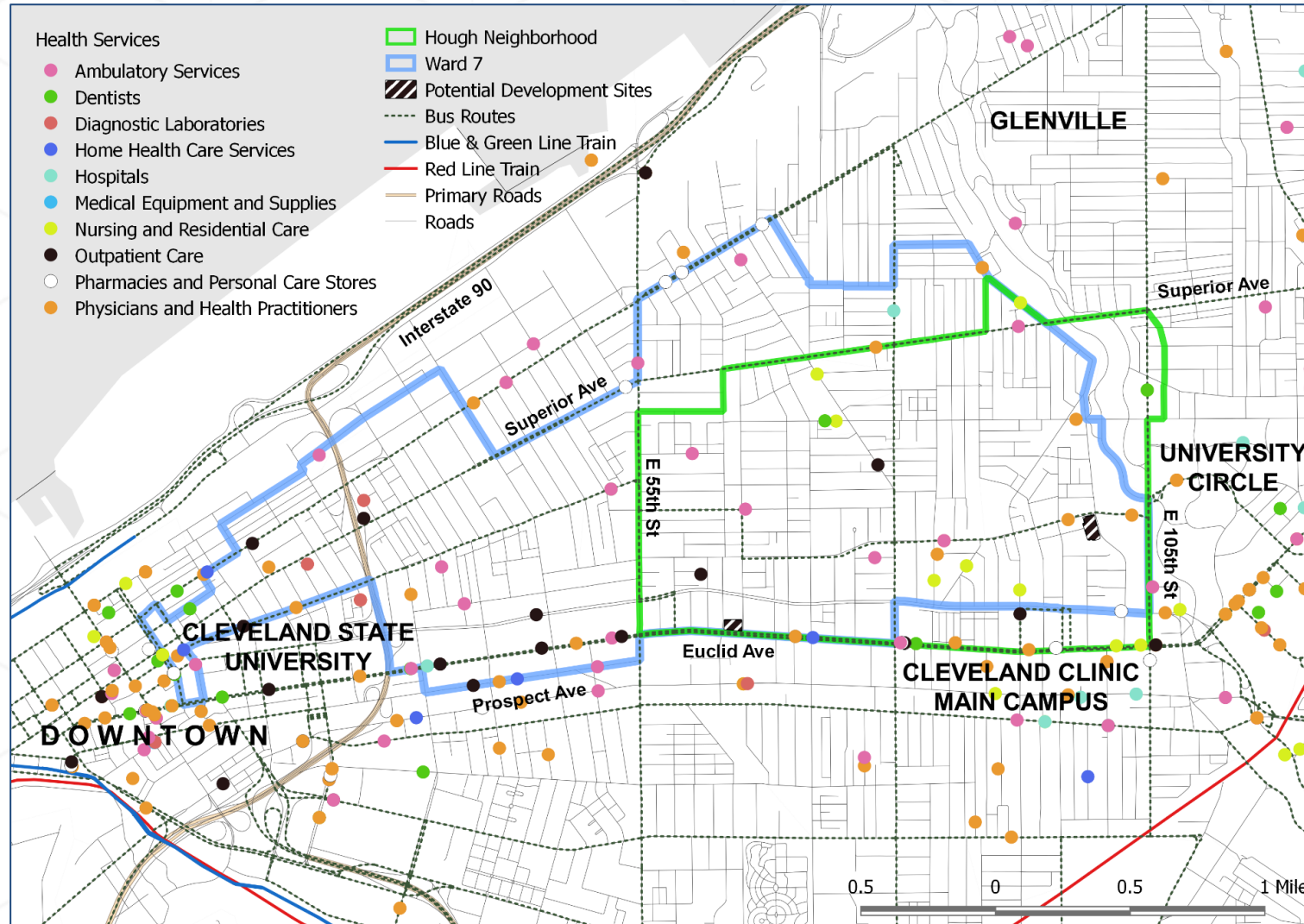
Administrative Services



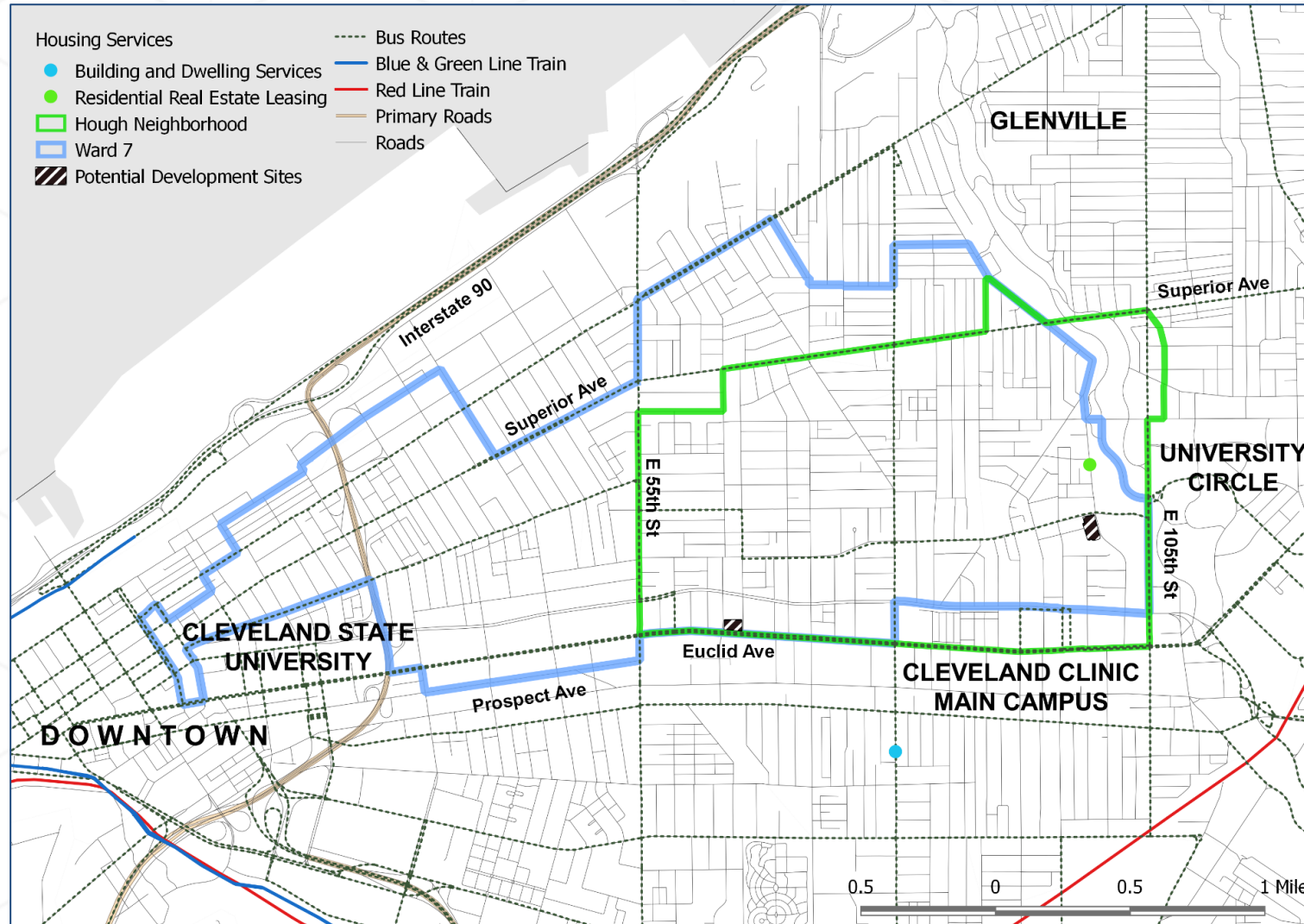
Amenities



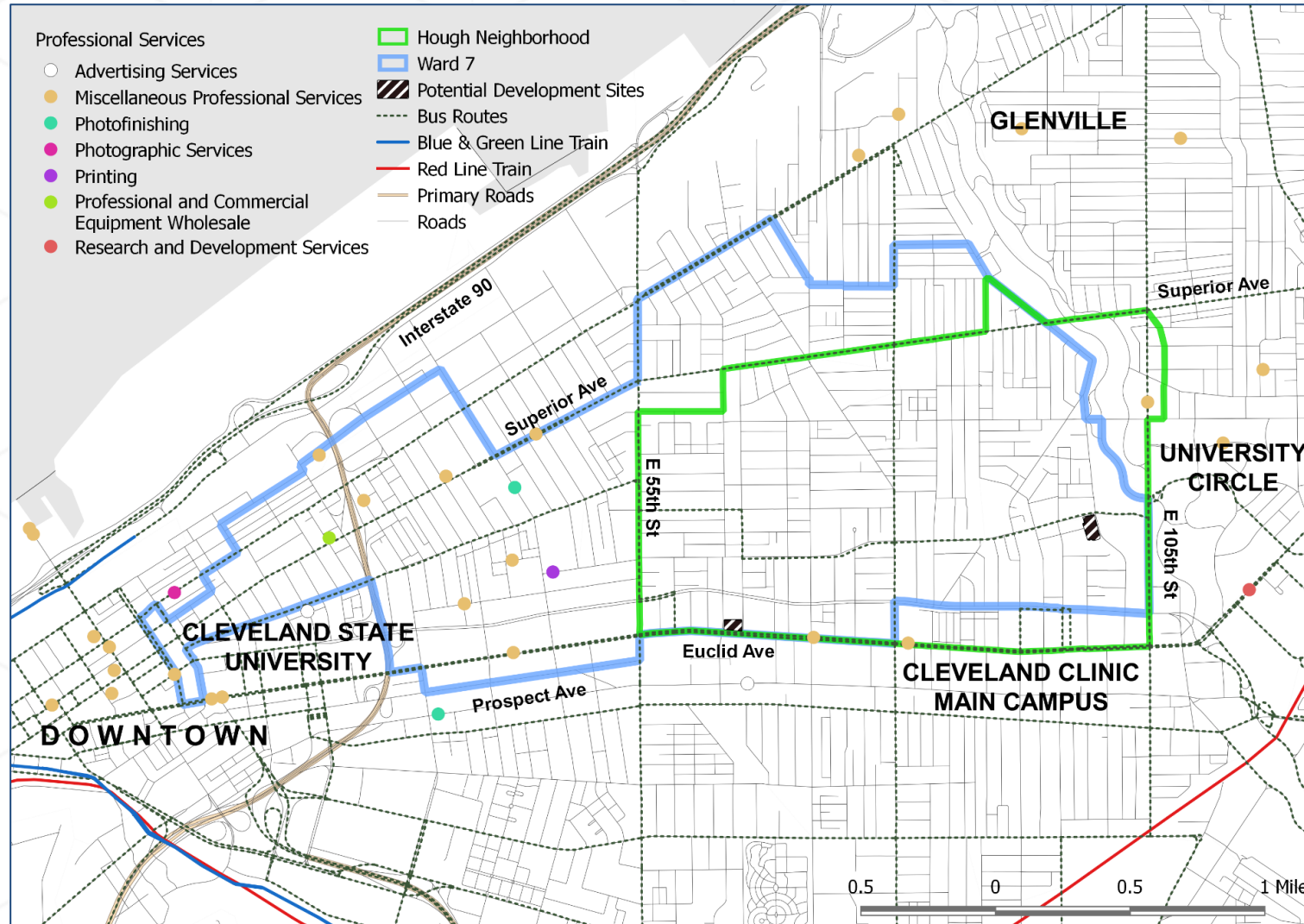
Health Services



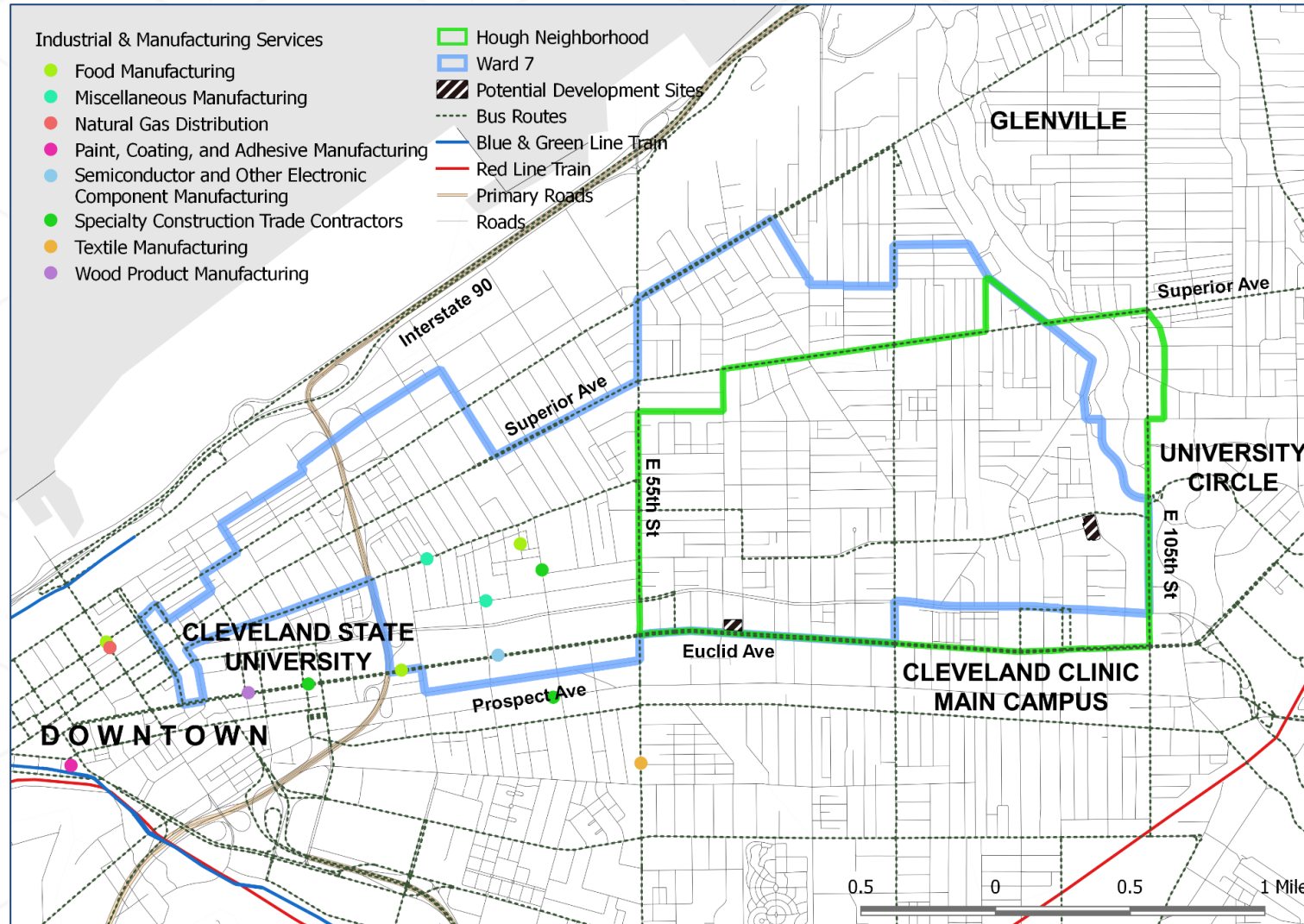
Housing Services



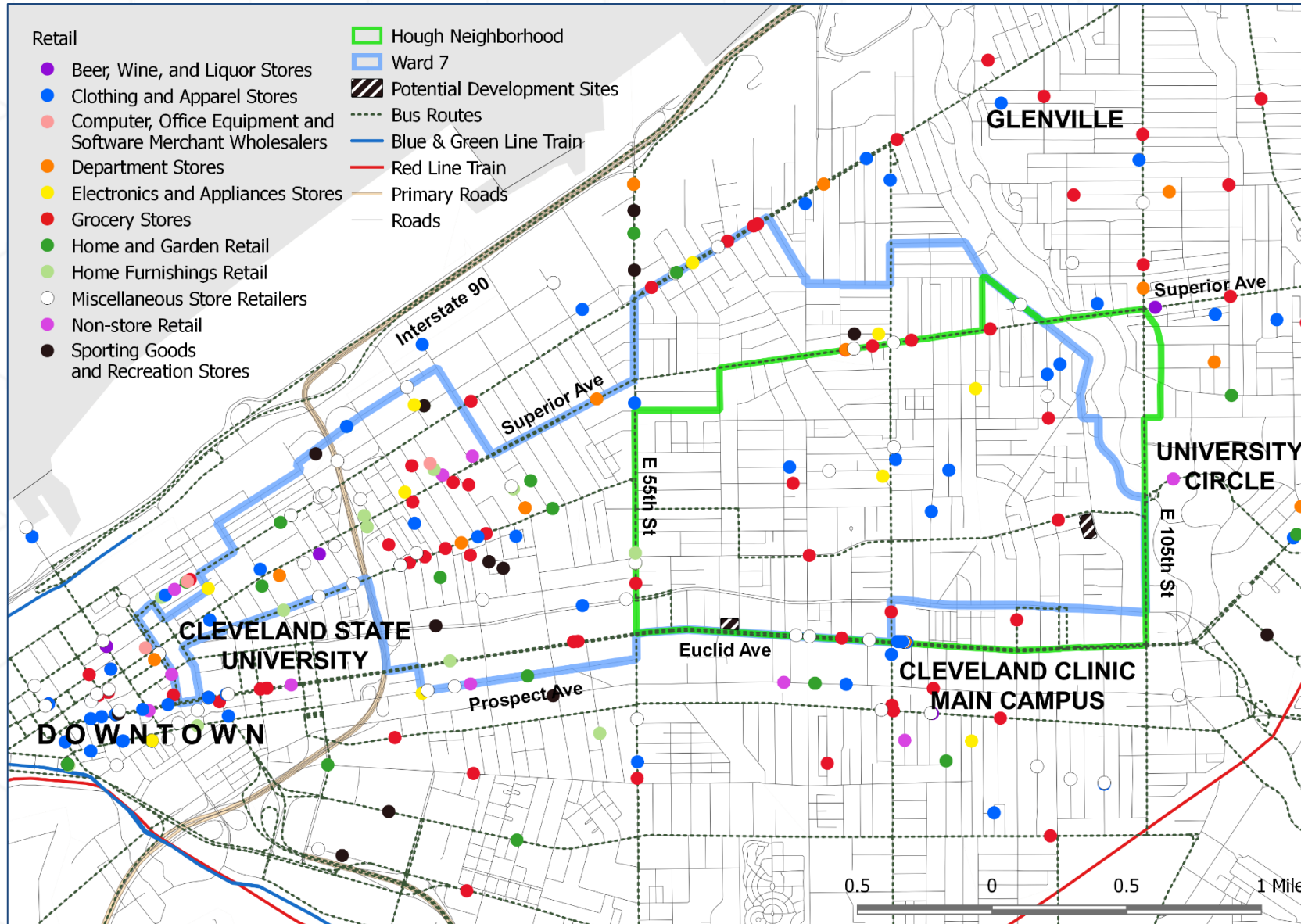
Professional Services



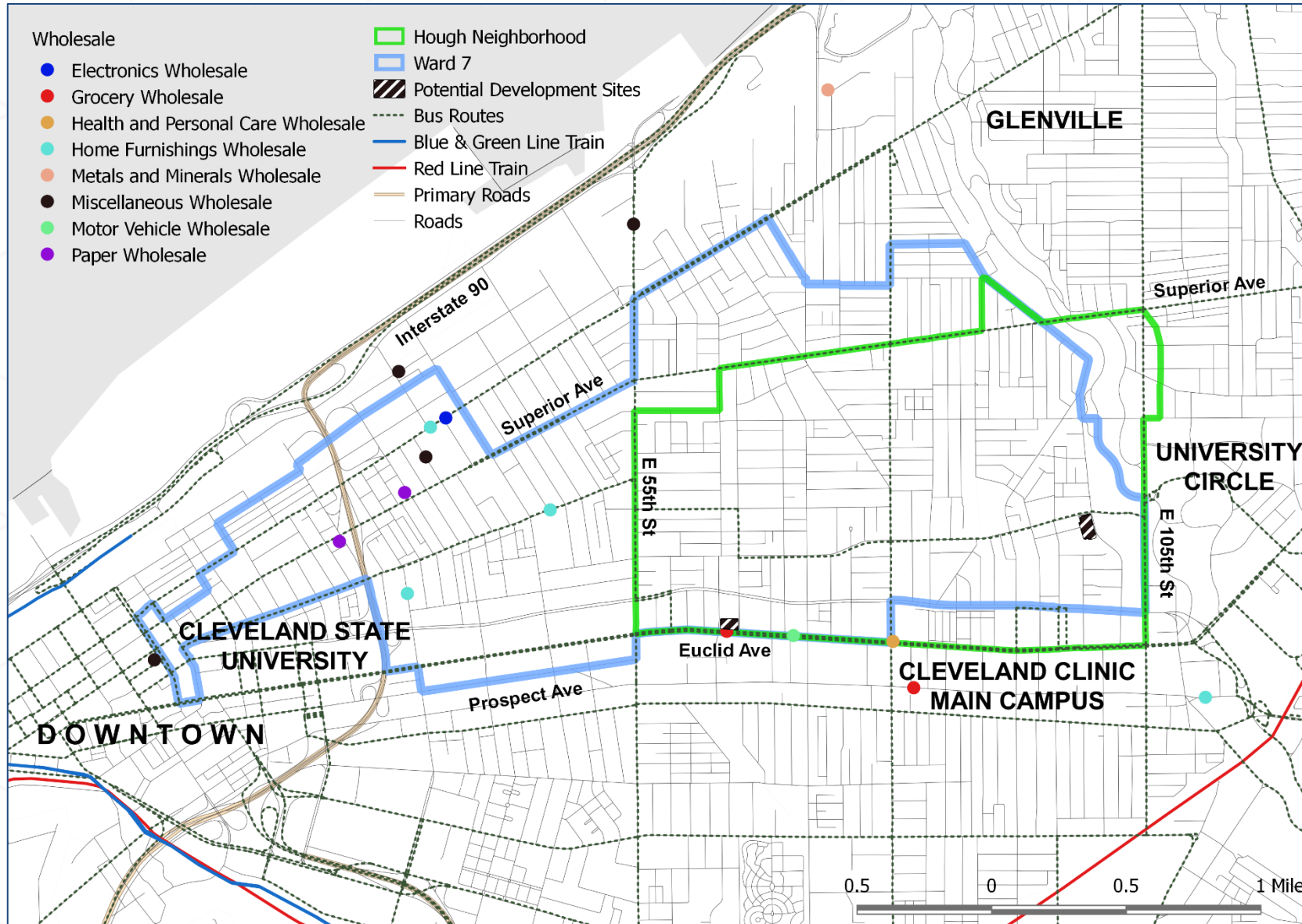
Industrial & Manufacturing Services



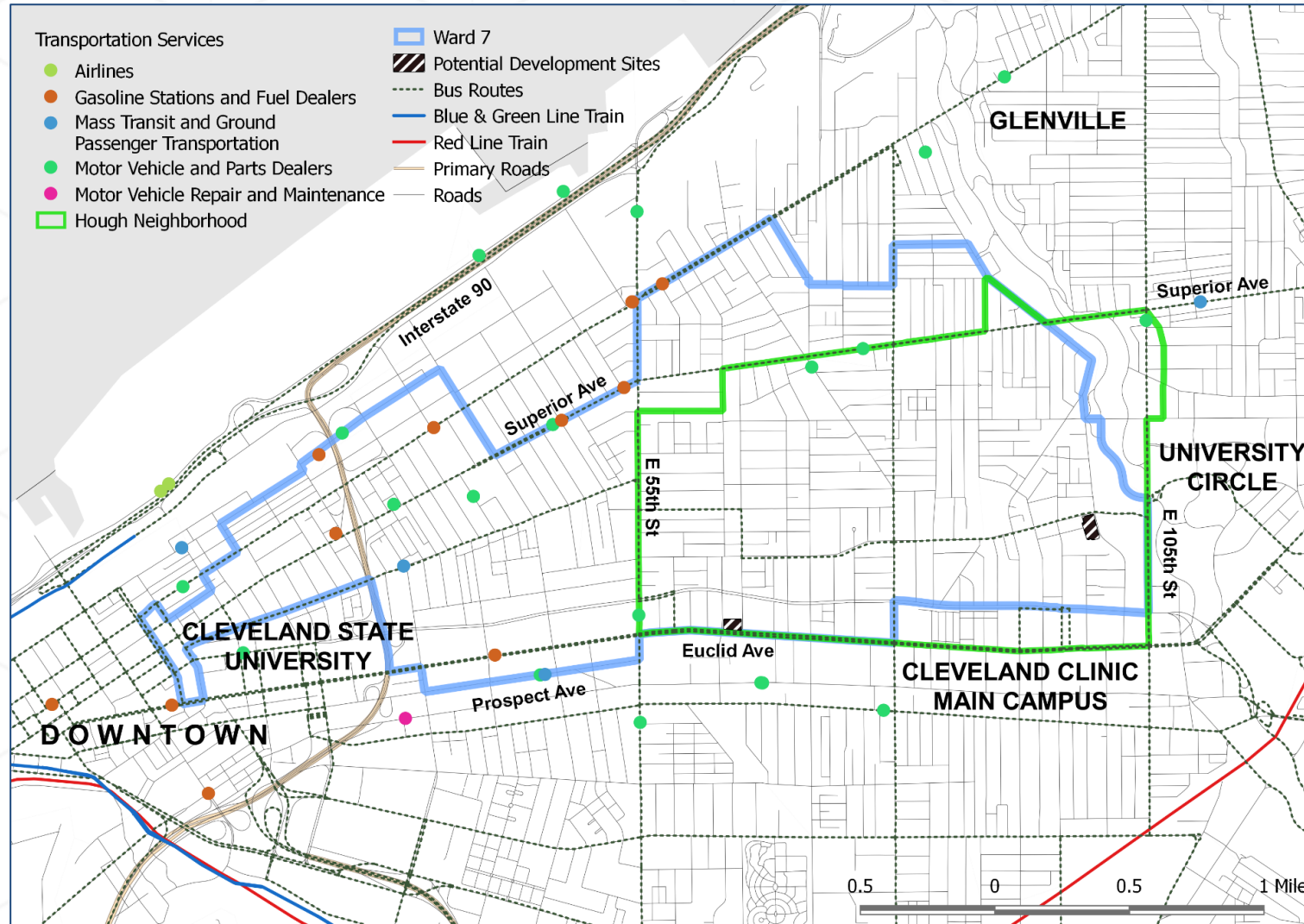
Retail



Wholesale

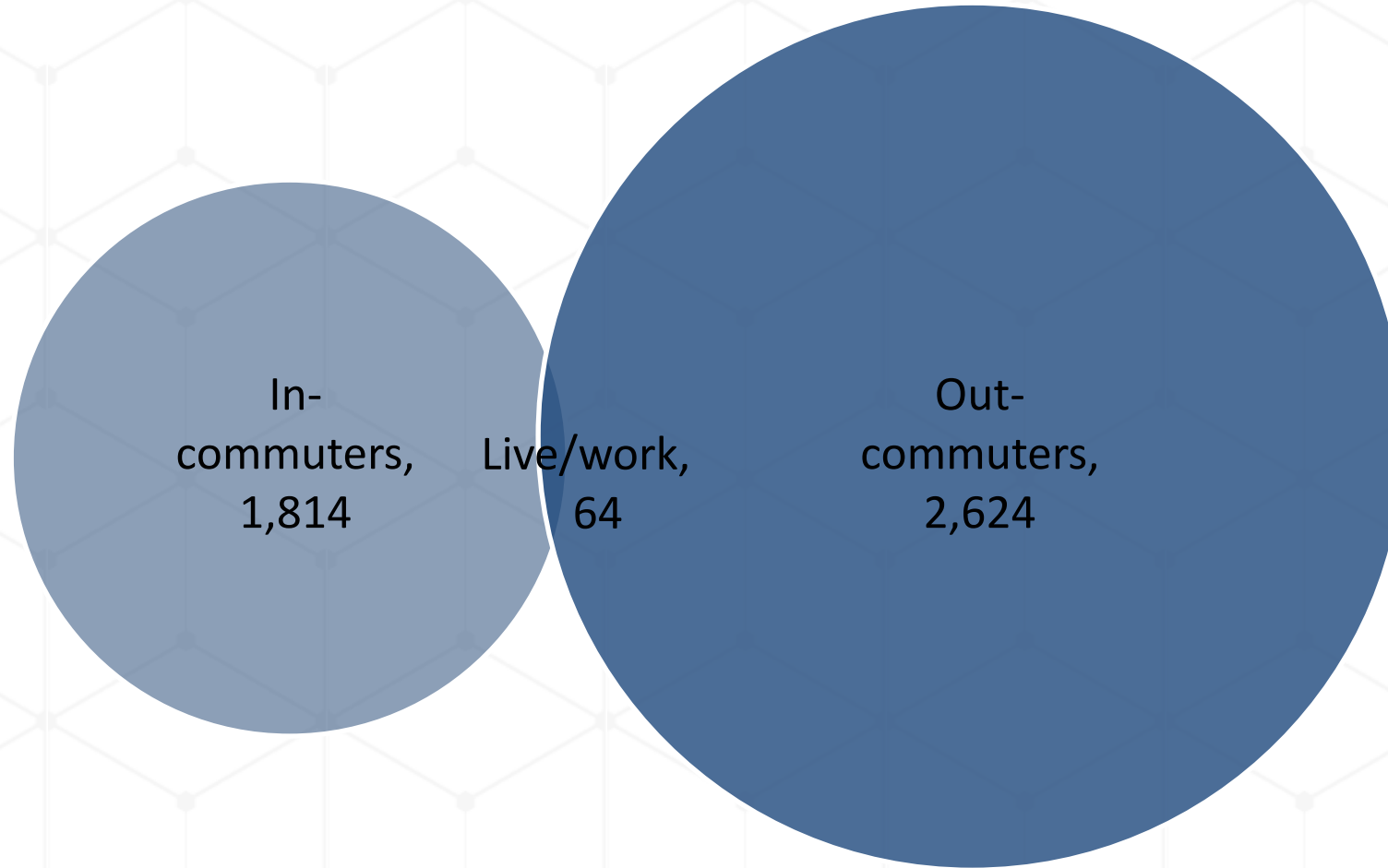


Transportation Services

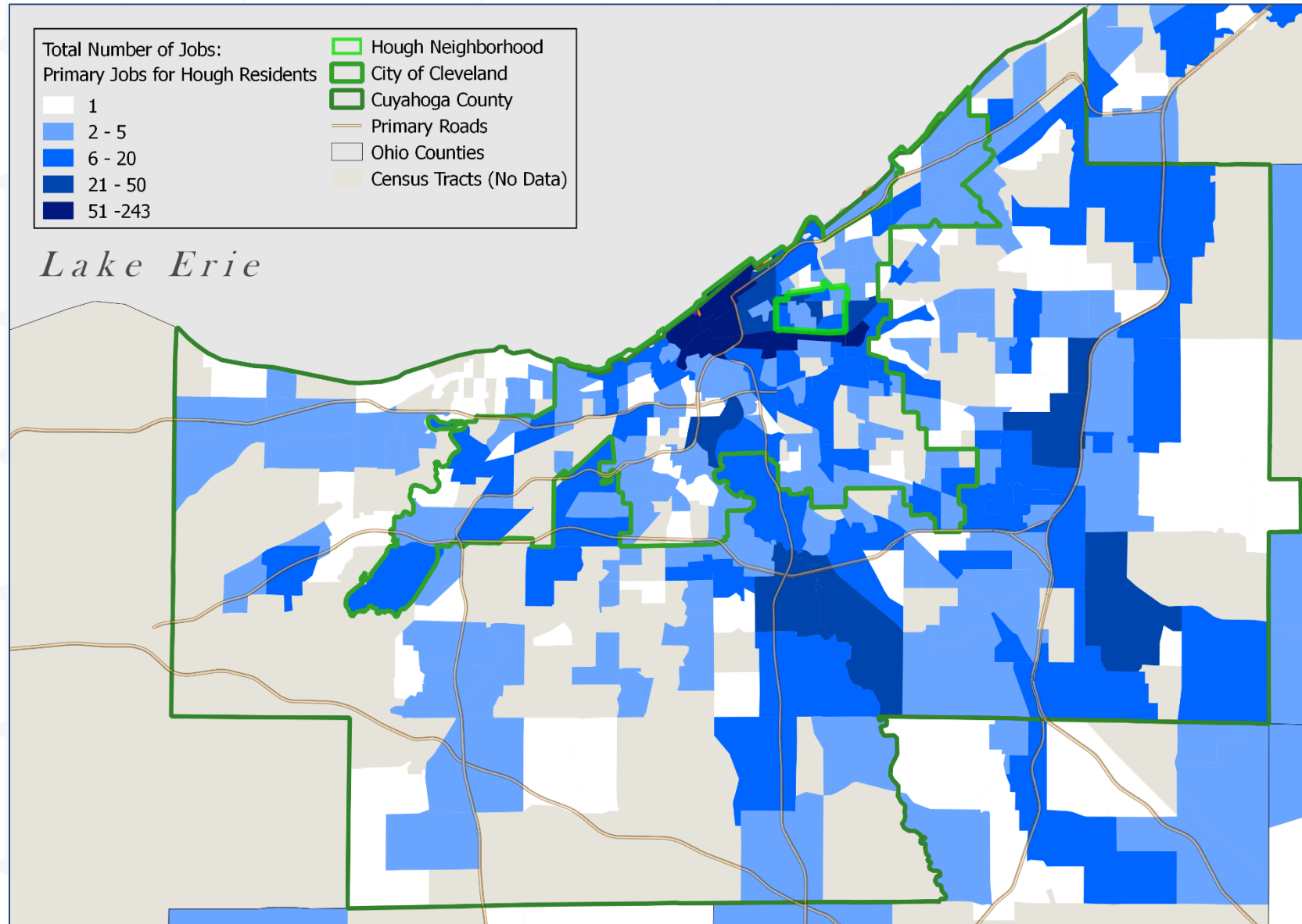


DEMOGRAPHIC DATA FOR HOUGH RESIDENTS

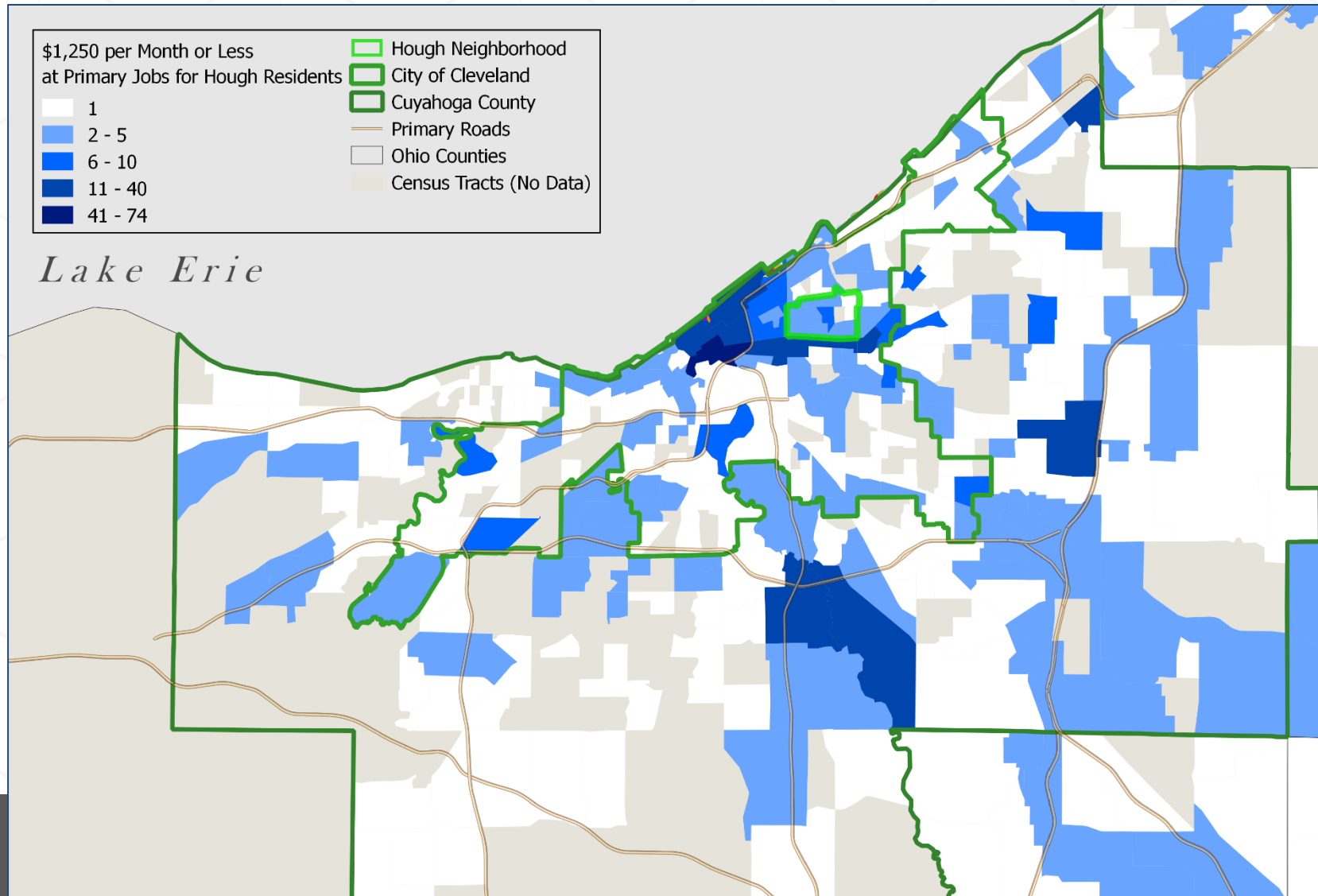
Hough Neighborhood Commuting Flows



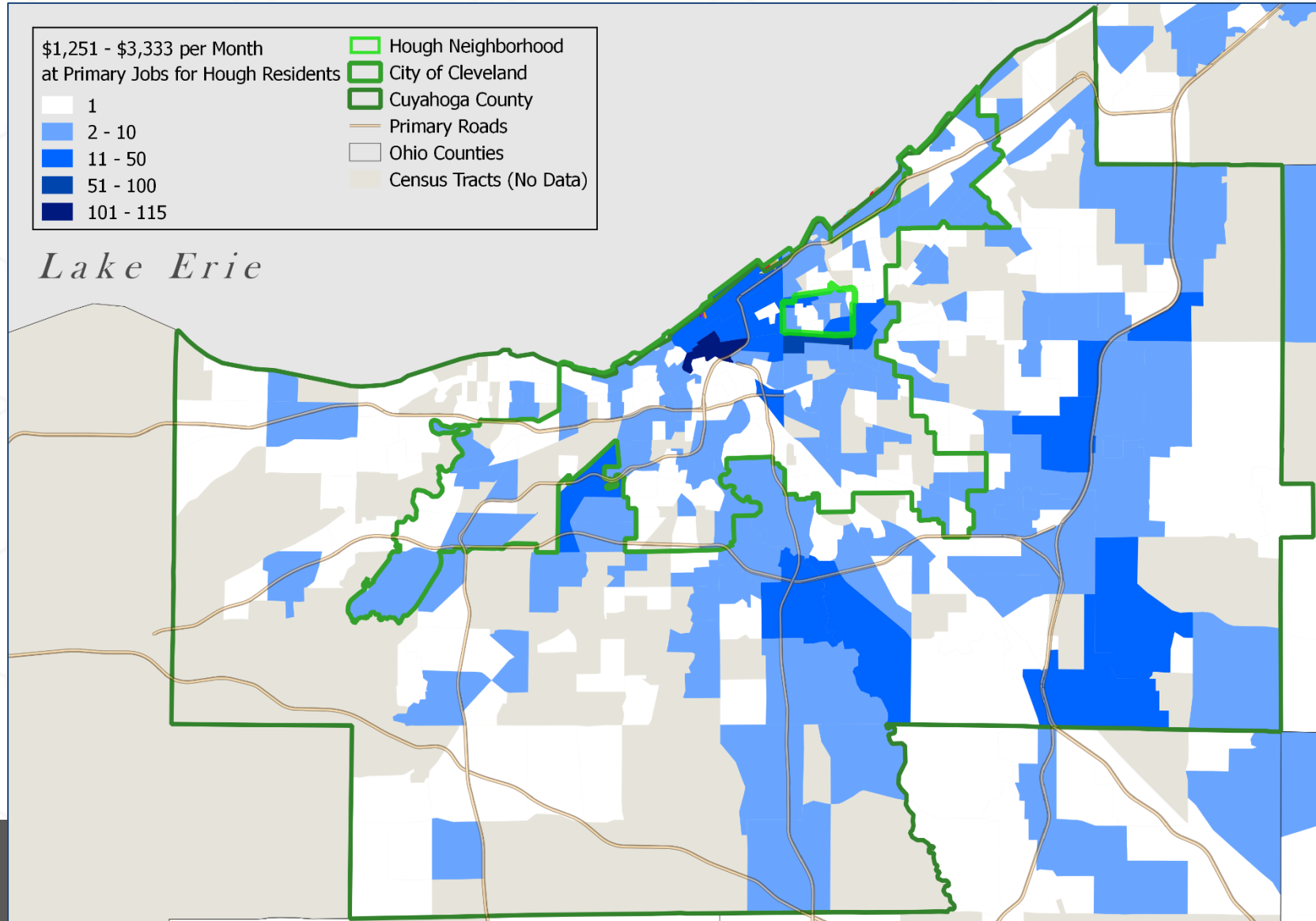
Where do people who live in Hough work? (N=2,688)



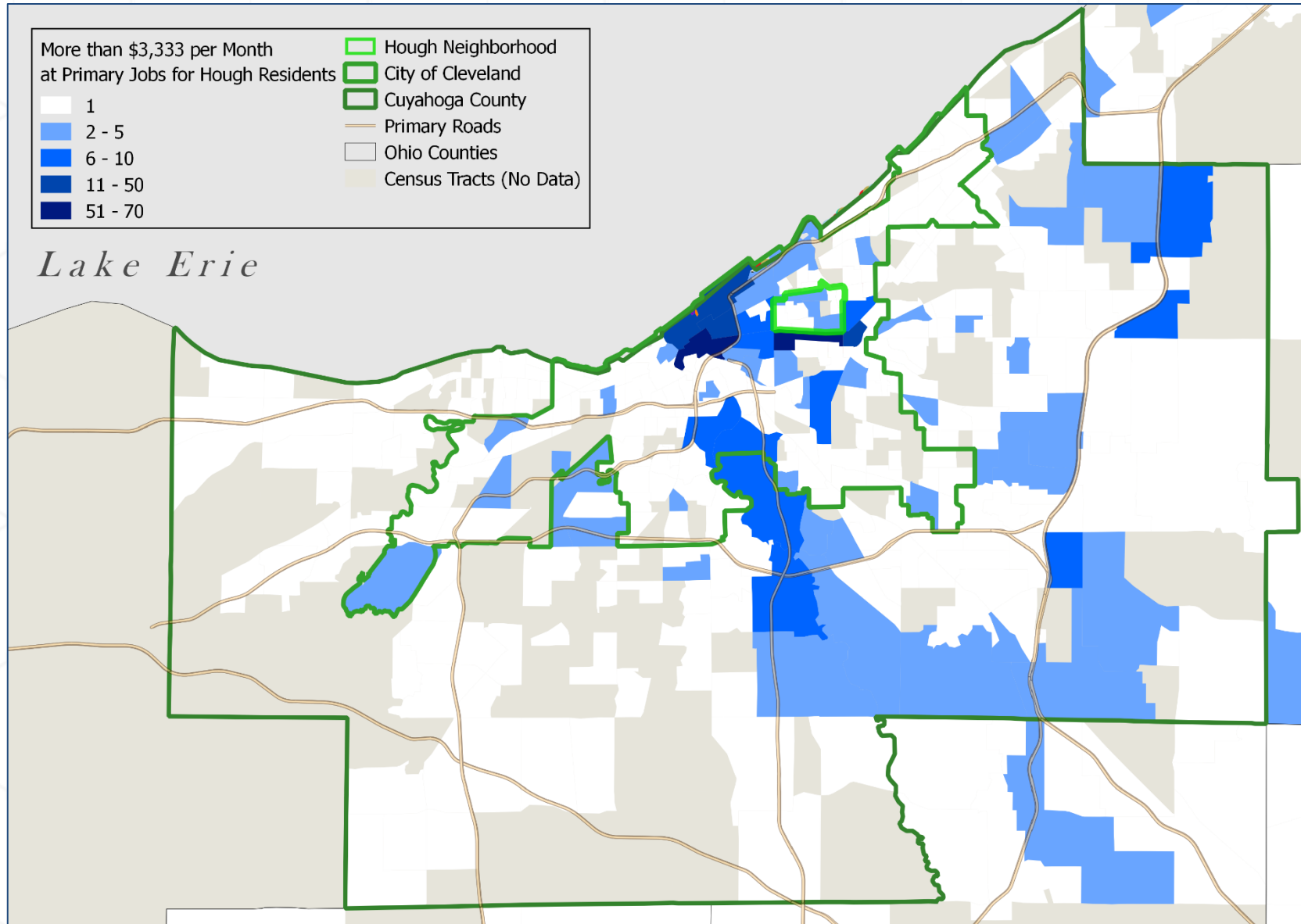
Where do Hough residents with lower earning (\$15k per year or less) work? (N=851)



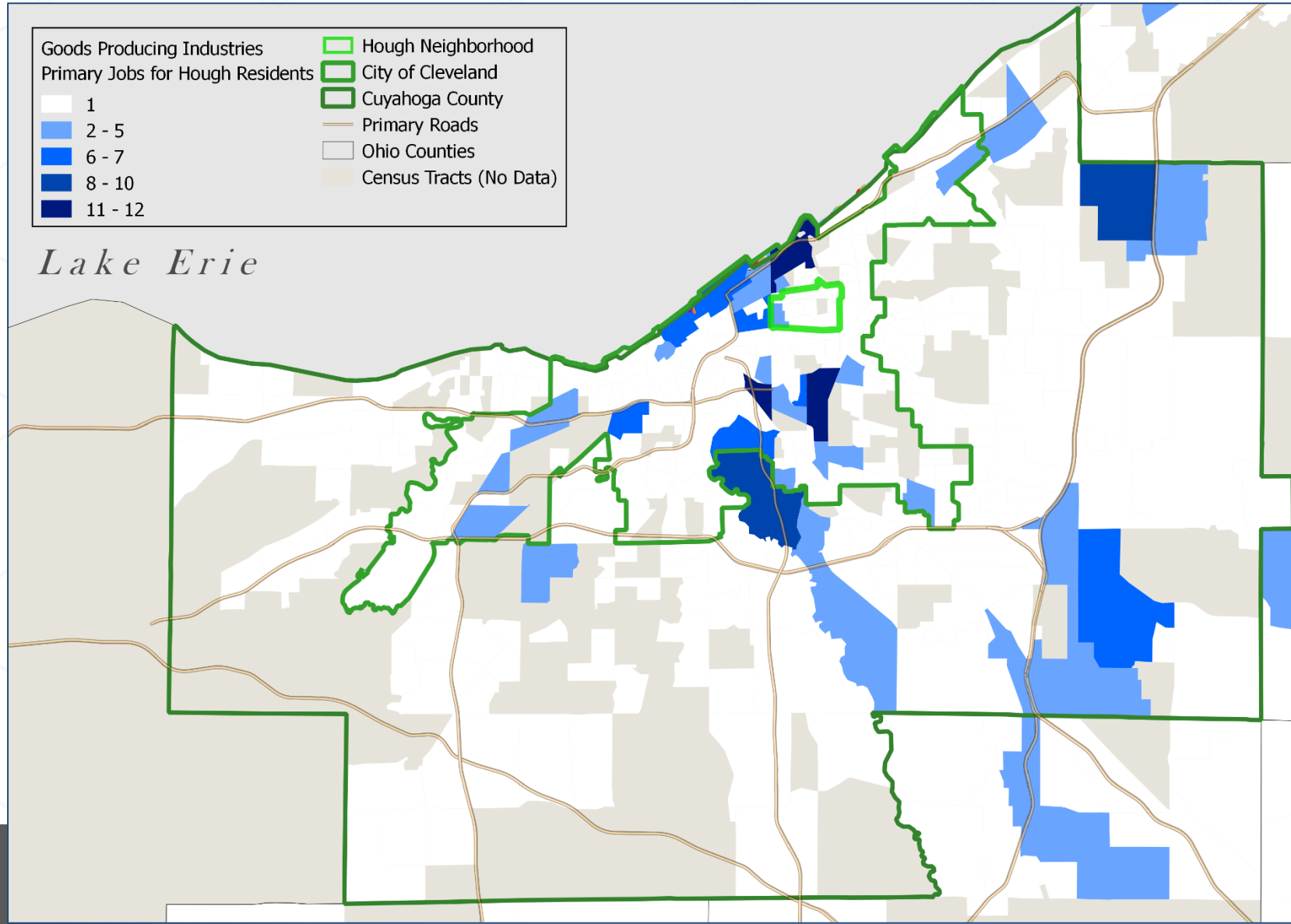
Where do Hough residents earning between \$15k and \$40k work? (N=1,258)



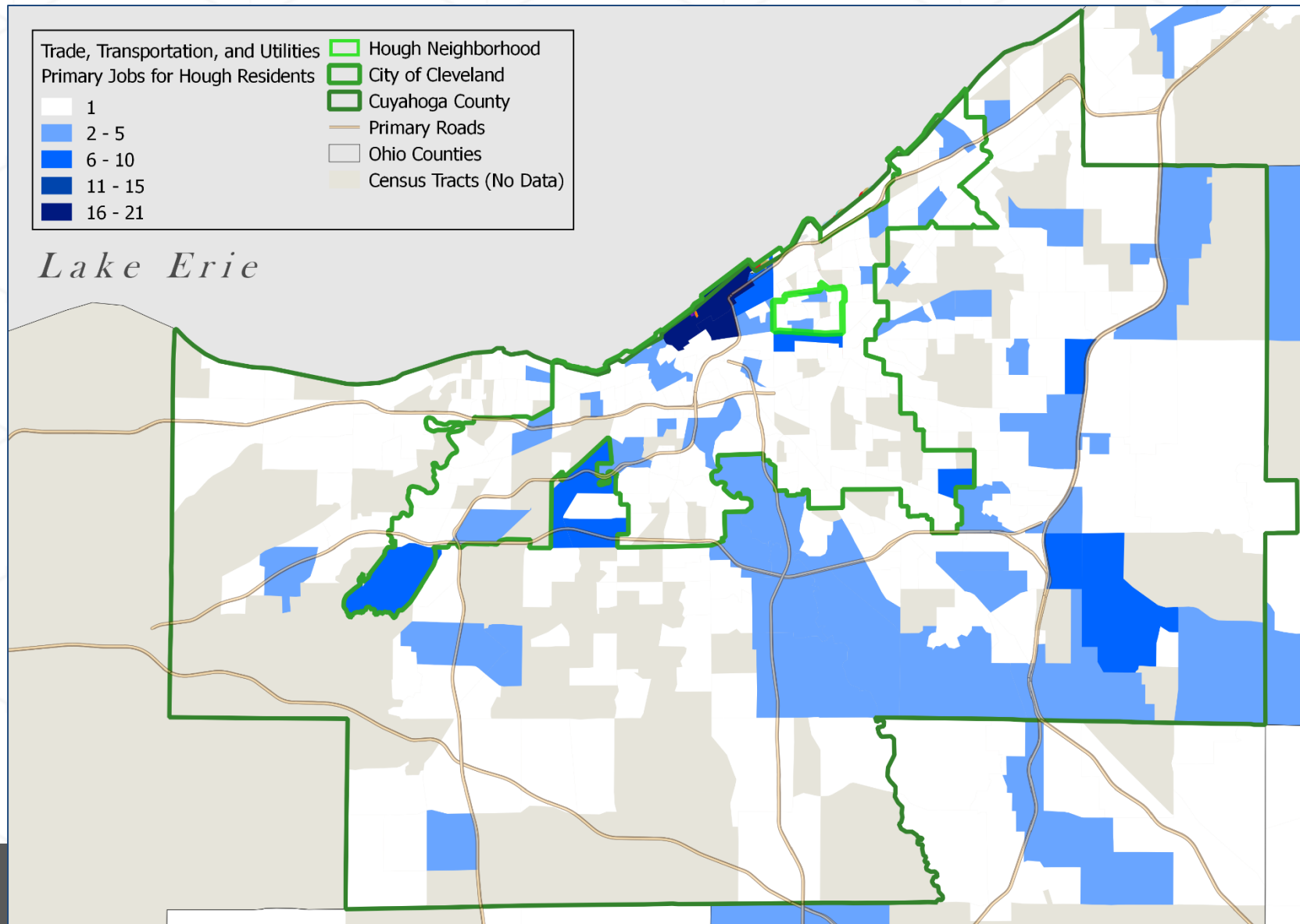
Where do Hough residents earning at least \$40k work? (N=579)



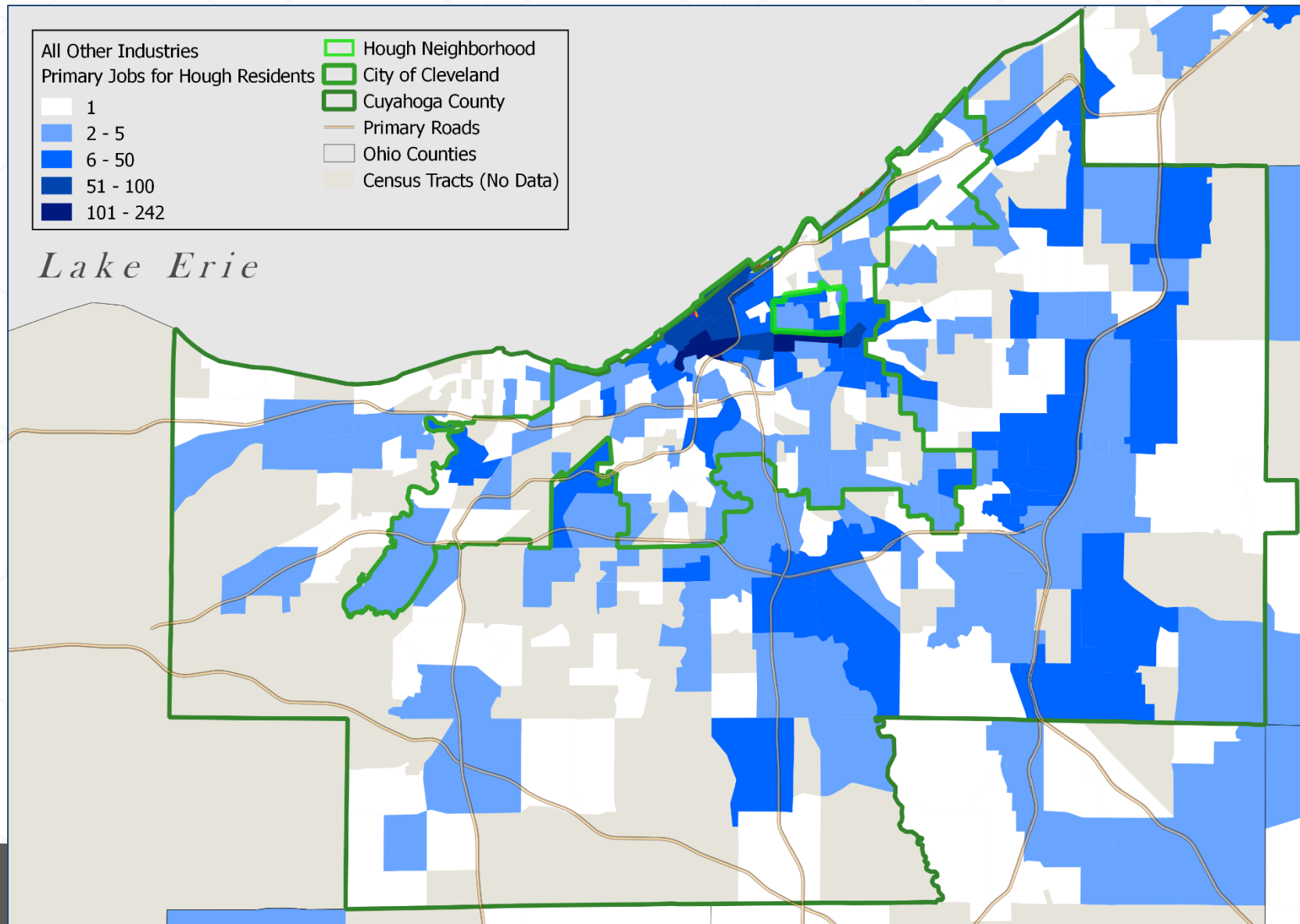
Where people who are employed in goods producing industries and live in Hough work? (N=244)



Hough residents in the Transportation, Trade, and Utilities industries and where they work (N=400)



Where the employment in the remaining industries are located in which Hough residents work (N=2,044)

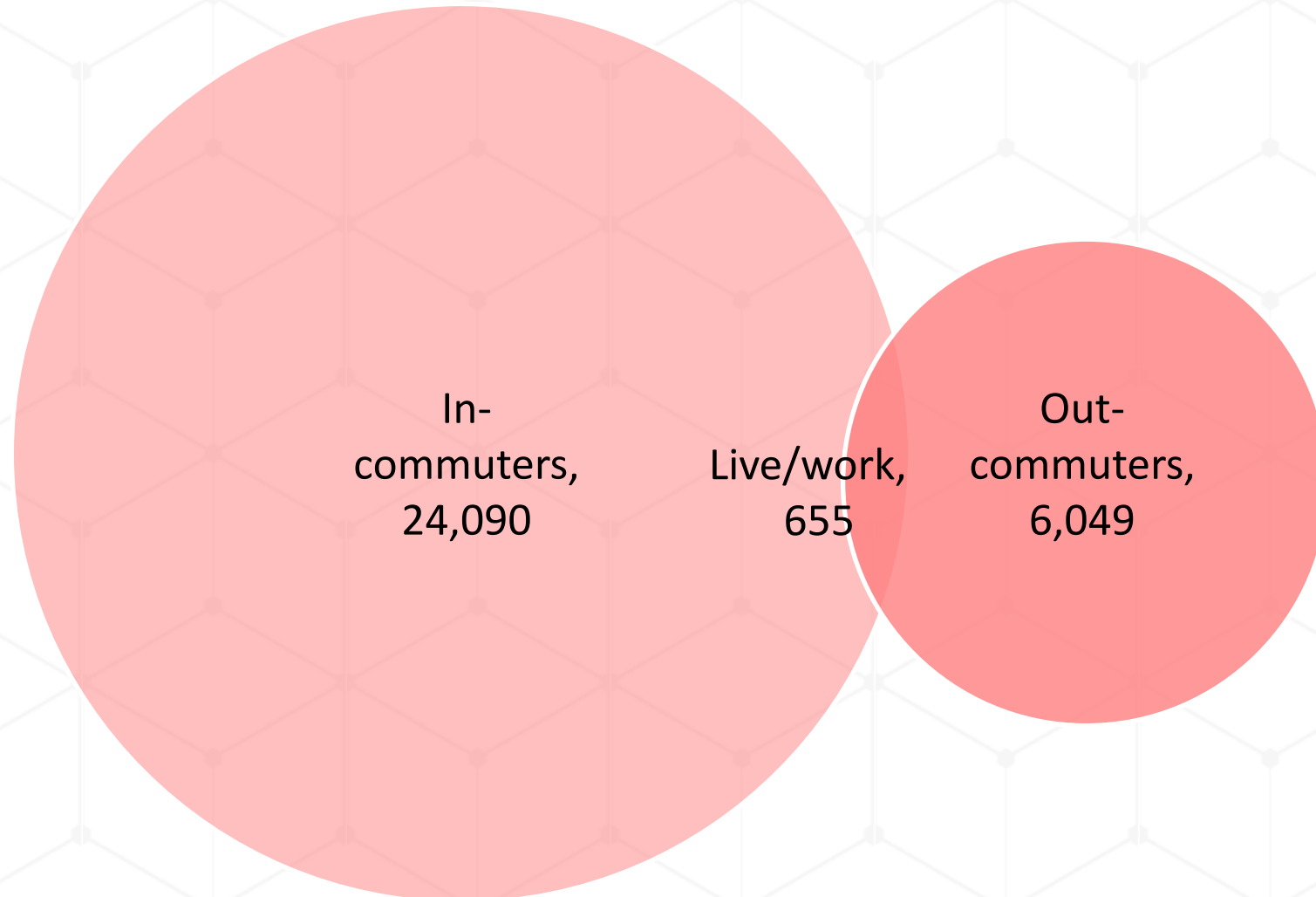


Questions and comments?

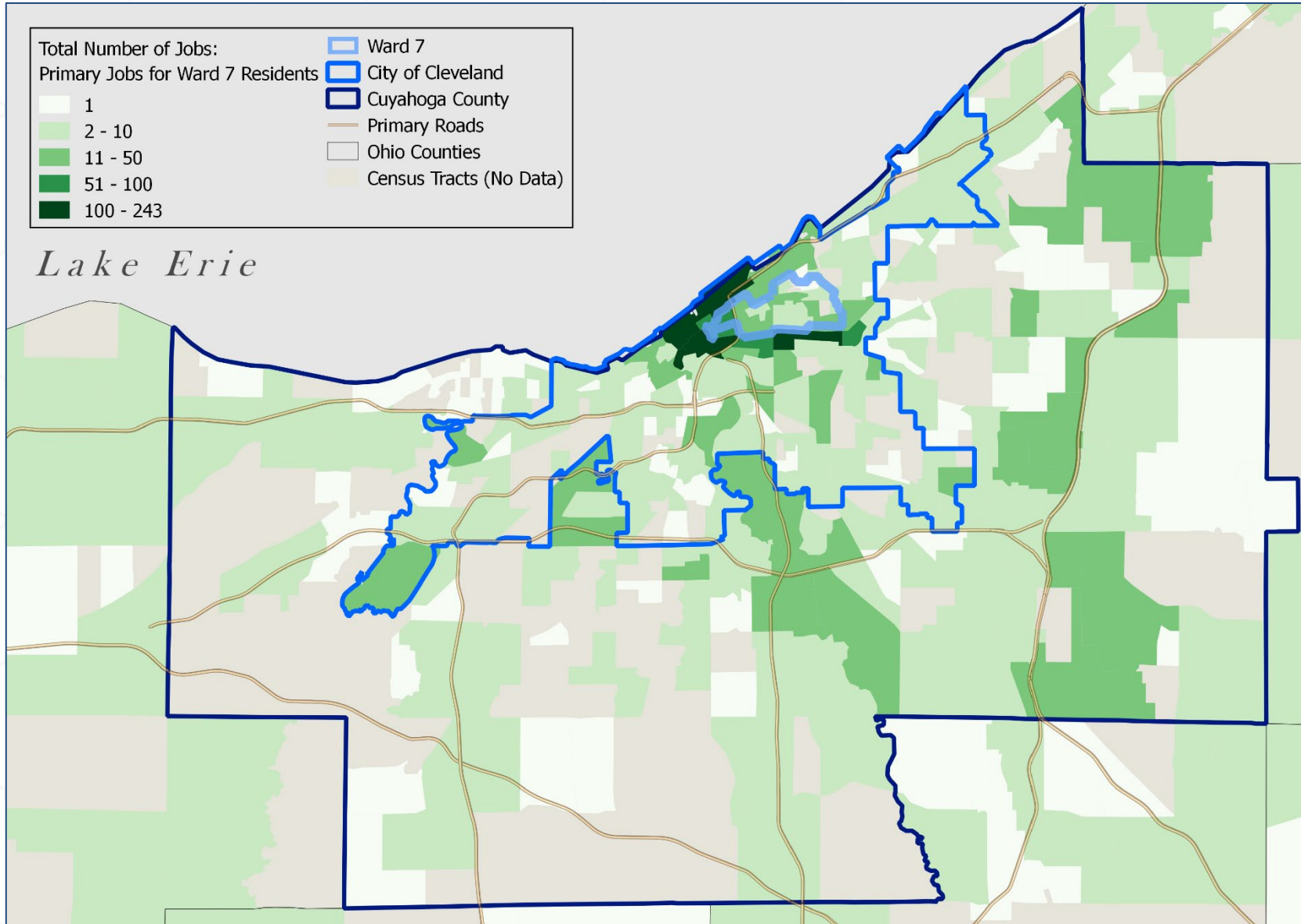
- Jim Robey, PhD – Director of Regional Economic Planning Services
 - jrobey@upjohn.org
 - 269-343-5541
 - Twitter: JimRobey
- Brian Pittelko, Regional Analyst
- Marie Holler, GIS Mapping Specialist

APPENDIX: DATA FOR WARD 7

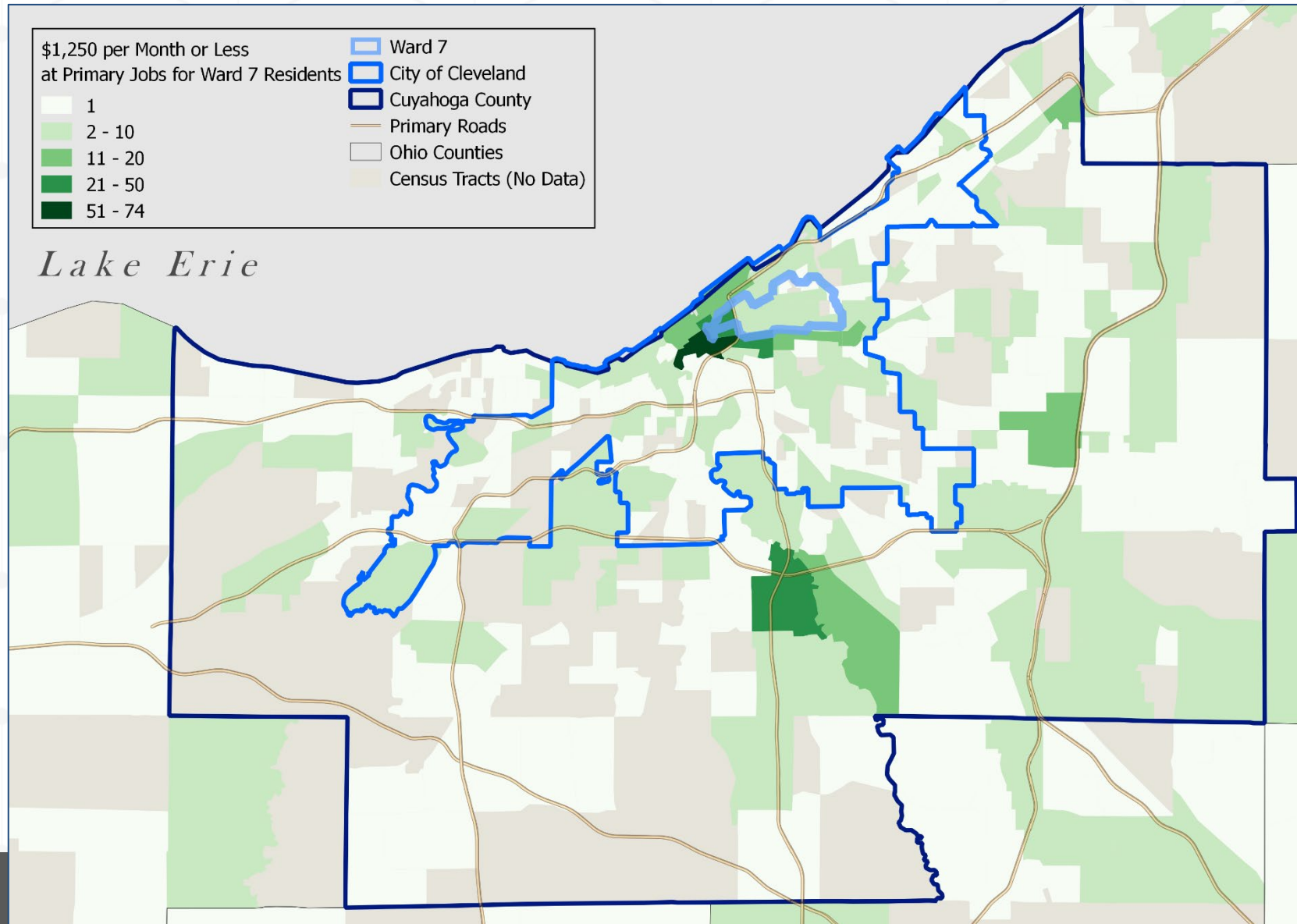
Relatively few people live and work in Ward 7 compared to the in-commuters



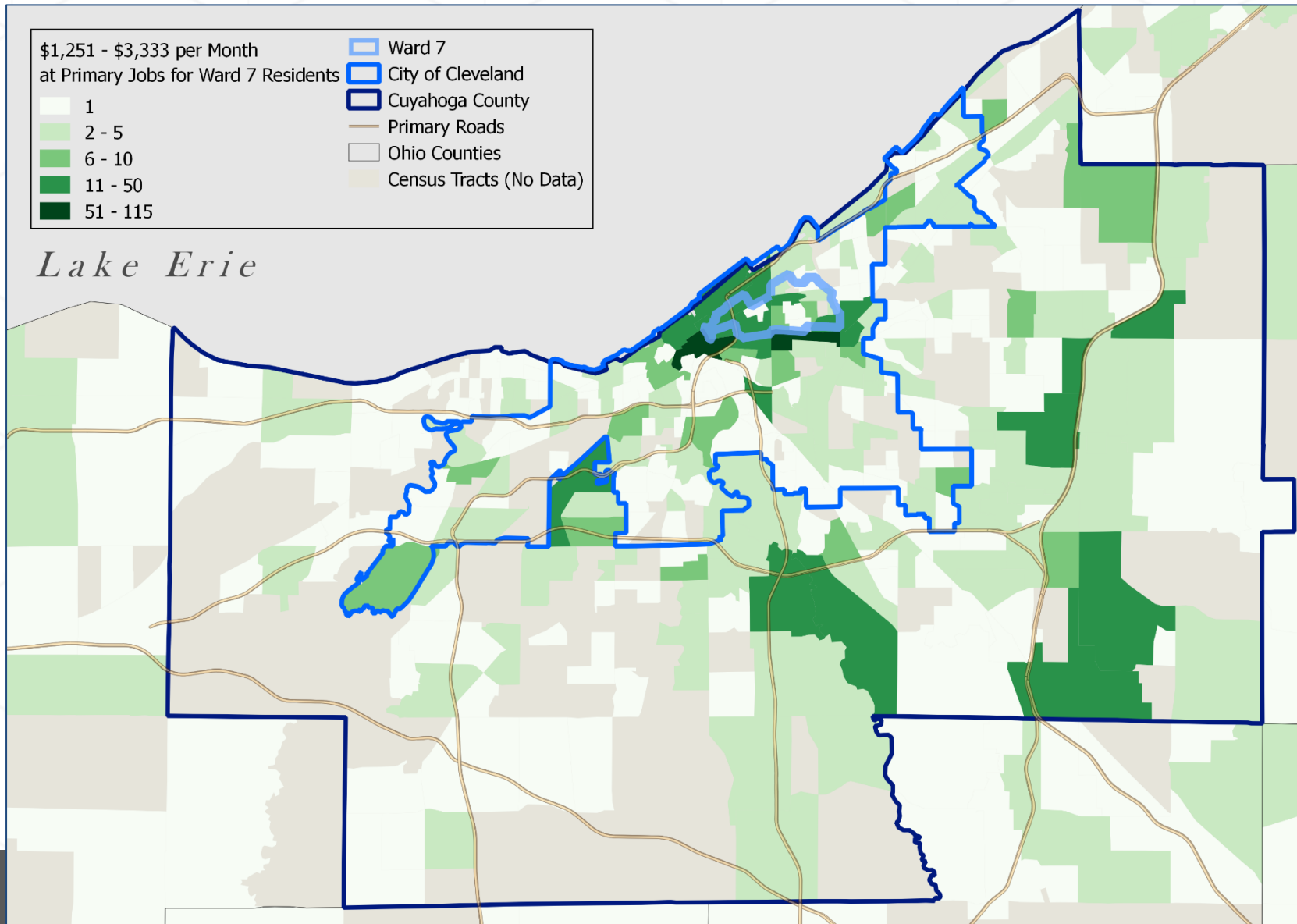
Where do people who live in Ward 7 work? (N=3,905)



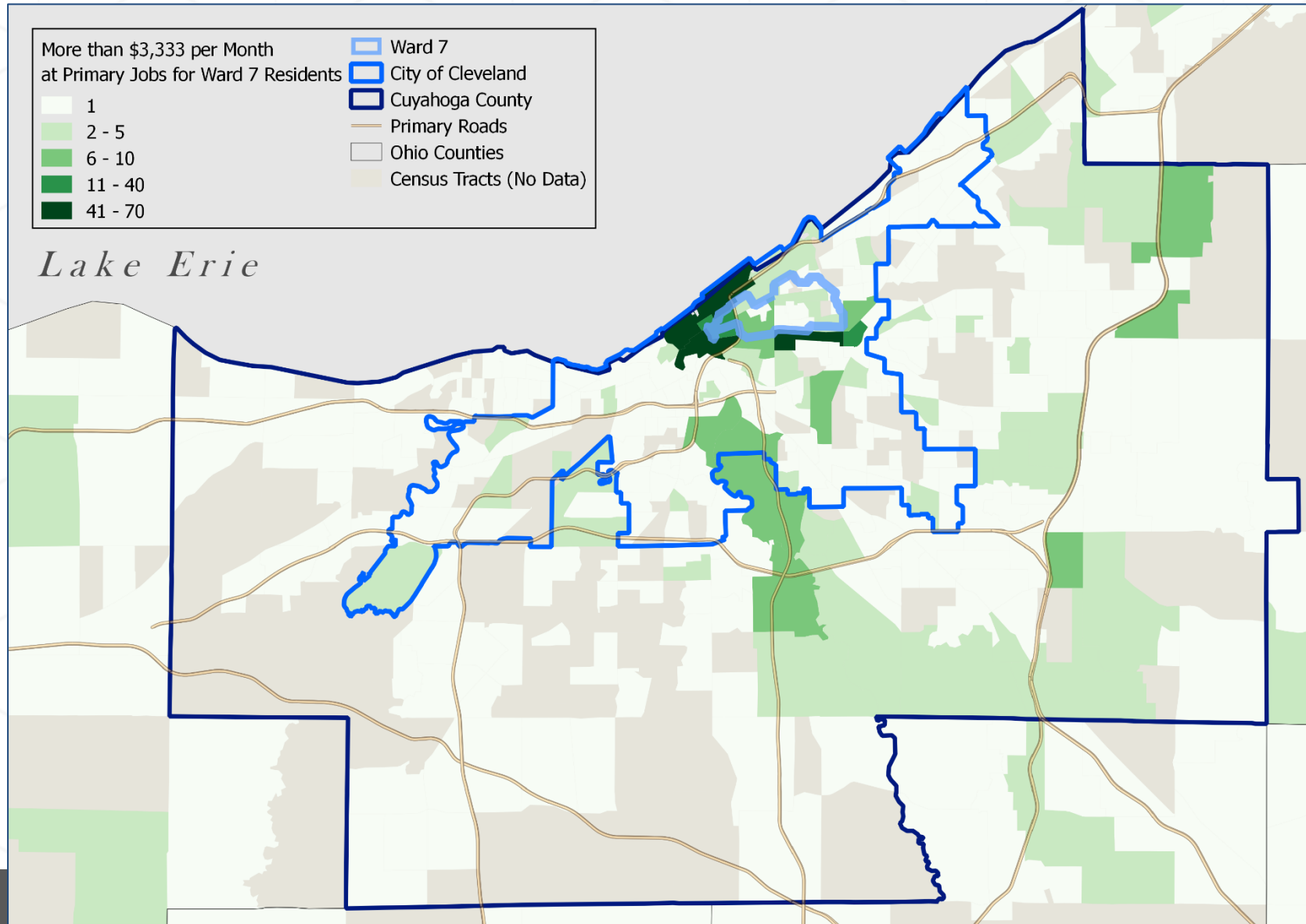
Where do Ward 7 residents with lower earning (\$15k per year or less) work? (N=1,064)



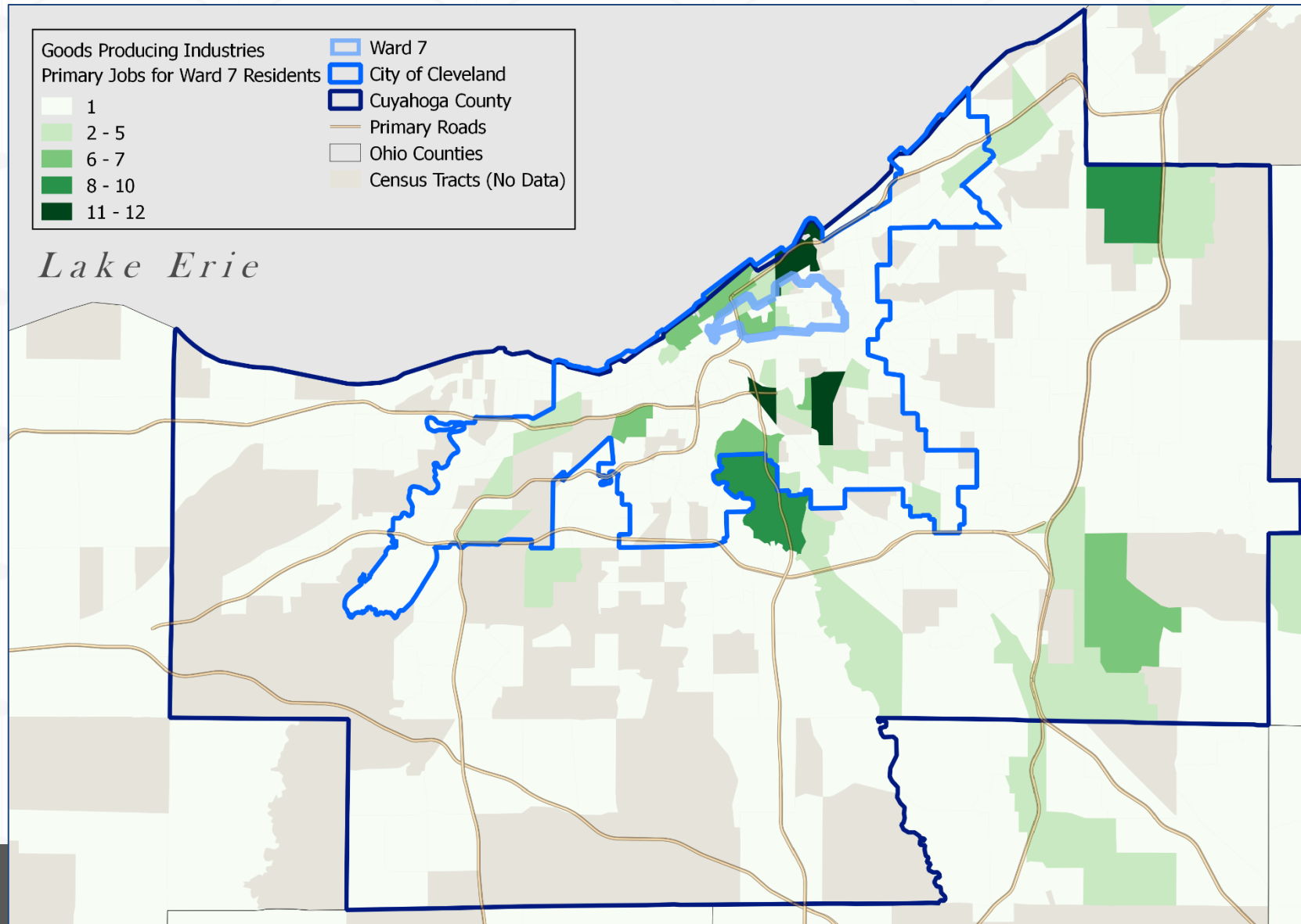
Where do Ward 7 residents earning between \$15k and \$40k work? (N=1,450)



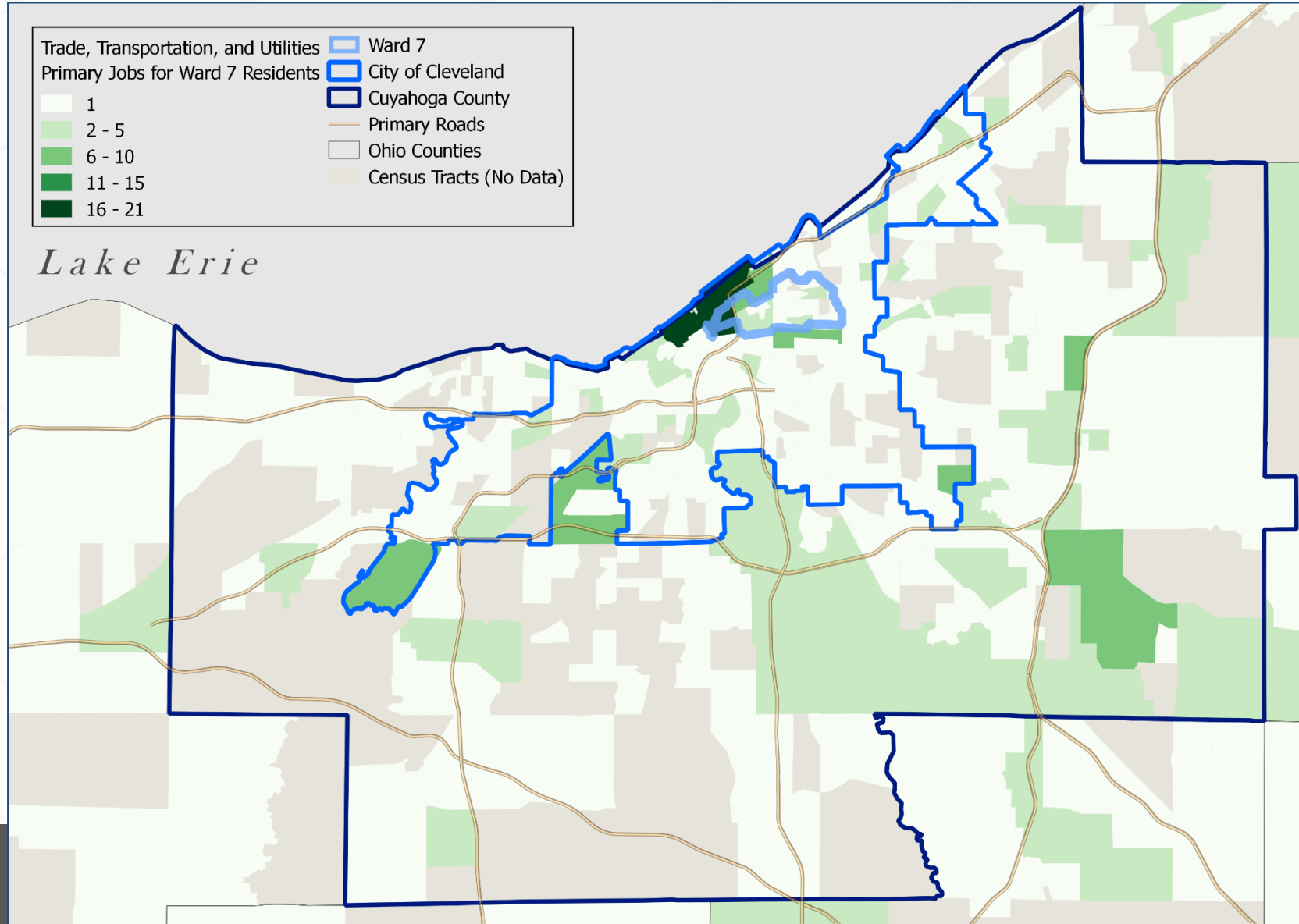
Where do Ward 7 residents earning at least \$40k work? (N=1,391)



Where people who are employed in goods producing industries and live in Ward 7 work? (N=359)



Ward 7 residents in the Transportation, Trade, and Utilities industries and where they work? (N=691)



Where employment in the remaining industries are located in which Ward 7 residents work? (N=2,855)

