

# Attentional Gain and Processing Capacity Limits Predict the Propensity to Neglect Unexpected Visual Stimuli

Massimiliano Papera\* and Anne Richards

Mace Experimental Research Laboratories in Neuroscience (MERLiN), Department of Psychological Sciences, Birkbeck College, University of London, London WC1E 7HX,  
UK

\*Correspondence to Massimiliano Papera, e-mail: [m.papera@bbk.ac.uk](mailto:m.papera@bbk.ac.uk); Phone: 0044 (0) 2076316202

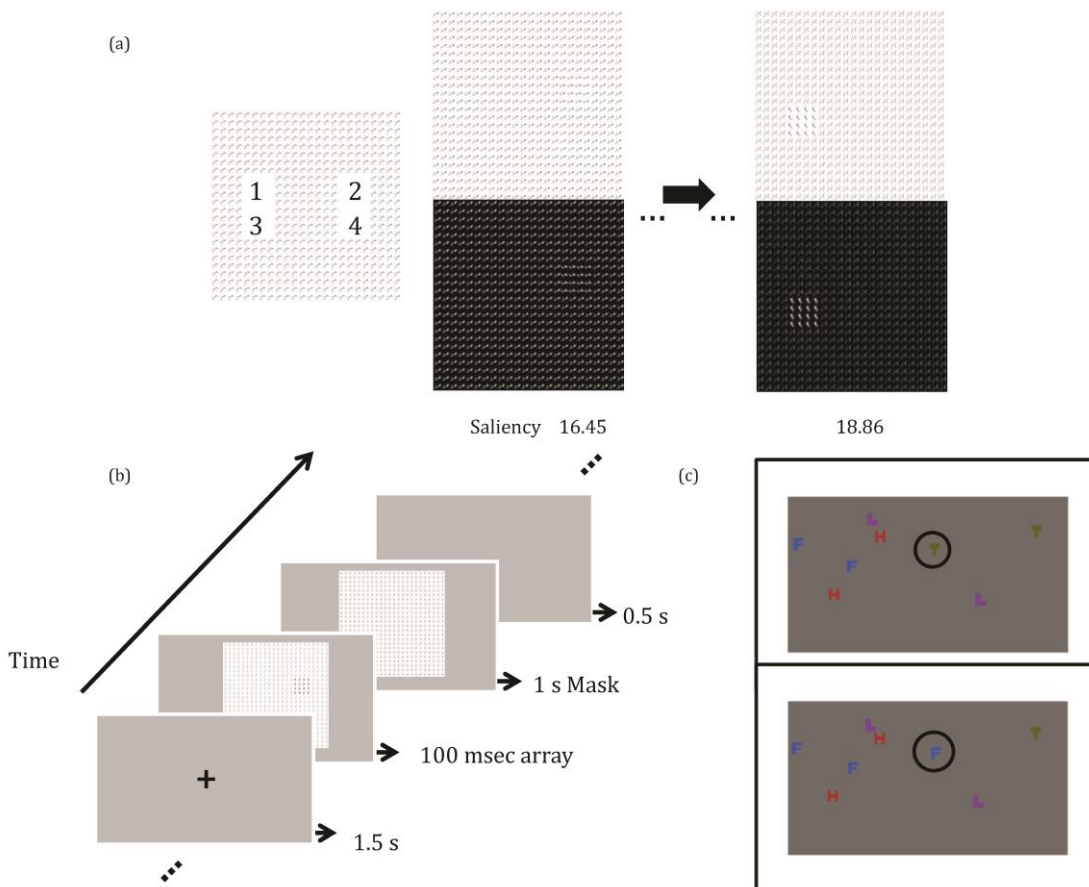
## Abstract

Exogenous allocation of attentional resources allows the visual system to encode and maintain representations of stimuli in visual working memory (VWM). However, limits in the processing capacity to allocate resources can prevent unexpected visual stimuli from gaining access to VWM and thereby to consciousness. Using a novel approach to create unbiased stimuli of increasing saliency, we investigated visual processing during a visual search task in individuals who show a high or low propensity to neglect unexpected stimuli. When propensity to inattention is high, ERP recording show a diminished amplification concomitantly with an increase in theta band power during the N1 latency, followed by a poor target enhancement during the N2 latencies. Furthermore, a later modulation in the P3 latency was also found in individuals showing propensity to visual neglect, suggesting that more effort is required for conscious maintenance of visual information in VWM. Effects during early stages of processing (N80 and C1) were also observed suggesting that sensitivity to contrasts and medium to high spatial frequencies may be modulated by low-level saliency (albeit no statistical group differences were found).

In accordance with the Global Workplace Model (GWM), our data indicate that a lack of visual attention resources in the low-level processors may be responsible for the failure to “ignite” a state of high-level activity spread across several brain areas that is necessary for stimuli to access awareness. These findings may aid in the development of diagnostic tests and intervention to detect/reduce inattention propensity to visual neglect of unexpected stimuli.

When one is performing a resource-consuming visual task, the appearance of an unexpected stimulus may go undetected. This phenomenon is called Inattentional Blindness (IB; Jensen, Yao, Street, & Simons, 2011), and exhibiting it may provide an indication of a general tendency to neglect unexpected visual stimuli in analogous scenarios. Such a tendency has important implications for areas of human risk assessment (e.g., aviation, rail, nuclear power plants, surgery; see: Green, 2003; Harris, 2011; Budau, 2011; Musson, 2009; Paries & Amalberti, 1995), attention, and the conscious awareness of visual stimuli (Mack & Rock, 1998; Most, Scholl, Clifford, & Simons, 2005; Most *et al.*, 2001). IB can be seen as an experimentally induced analogue of unilateral visual neglect, albeit *functionally-based* as opposed to the lesion-based neglect syndrome, since both are caused by a failure to attend a given stimulus (Mack & Rock, 1998); therefore IB can lead to a better understanding of the conditions that are associated with the neglect of visual stimuli. Recently, research has also shown that the attention deficit hyperactivity disorder (ADHD), a condition characterised by inattention, excessive motor activity, and impulsivity may be associated with a selective impairment in visual search behaviour as a result of inattention (Maccari, Casagrande, Martella, Anolfo, Rosa, Fuentes *et al.* 2013). Controversially, genetics studies have shown that the genes that provide a predisposition to ADHD are more ancestral than those that protect from ADHD, suggesting that in the past traits associated with this disorder may have been evolutionary advantageous (e.g., seeing an ‘unexpected predator’; Arcos-Burgos *et al.*, 2010).

Studying individual differences in the propensity to visual neglect allows us to explore how resources are allocated during visual exploration when selective attention is modulated by top-down factors (Hannon & Richards, 2010; Richards, Hannon, & Derakshan, 2010; Richards, Hannon, & Vitkovitch, 2010) and saliency-driven capture (Papera, Cooper & Richards, 2014, for evidence of how visual neglect affects overt attention during visual



**Figure 1** (a) Example images of the Randmorph Task (top) and associated saliency map (bottom; for implementation see Papera, Cooper, & Richards, 2014). The Randmorph Task comprises a set of unique artificial stimuli that have no reference with real-life objects to produce a pop-out effect. Thus, effect of strategic processing can be controlled for. Images with increasingly higher saliency present a more visible pop-out target. Targets were presented four times, once in each of the four locations. (b) Experimental procedure: A fixation cross is presented for 1.5 s and is followed by the test array for 100 ms. This is replaced by a mask for 1 s during which participants can make a response. A blank screen was presented for 0.5 s before the presentation of the next trial. (c) In the IB task, participants track two blue Fs and two green Ts as they move in a linear but randomly around the screen and silently count how many times the Fs and Ts separately hit the frame on the screen but to ignore similarly moving distractors (i.e., orange Hs and purple Ls; see Richards, Hannon, Vohra, & Golan, 2014). Several seconds into the task, a green T unexpectedly turned into a blue F. This was an unexpected, yet task-relevant, change. Participants, who report seeing the *actual* transition when questioned at the end of the task (and performed with an accuracy of at least 50% the primary task), are classified as Non-IB, providing a strong evidence of high propensity to neglect unexpected visual changes/stimuli. Those participants not reporting having seen the transition are classified as IB, as they show a tendency to neglect something unexpected (and task-relevant) appearing on the screen.

search tasks). Top-down mechanisms can strongly modulate focal attention such that bottom-up saliency capture becomes very limited (Kiss, Grubert, Petersen, & Eimer, 2012) and unexpected stimuli may be prevented from gaining access to higher, consciously available, levels (Dehaene & Changeux, 2005). However, little is known about how early low-level processors that can prevent unexpected visual stimuli from gaining conscious access. To control for strategic processing and investigate the sensitivity of early visual processors to exogenously allocate attention towards low-level visual information, a unique set of novel stimuli was used (i.e., *Randmorphs*; a 1 interval forced choice visual search paradigm; see Figure 1a-b; see also Papera, Cooper, & Richards, 2014; Verma & McOwan, 2009). The Randmorph Task is a saliency-based pop-out visual search task that makes use of unique artificially generated target patches of increasing saliency (i.e., increasingly more visible) to control for familiarity effects. The estimation of the saliency for low-level visual features (i.e., bottom-up featural aspects such as luminance and orientation) was computationally determined without human intervention following the approach presented in Papera, Cooper, and Richards (2014; see also Verma & McOwan, 2009, and methods).

ERP components were measured to investigate activity in low-level processors. First, is the N1, which is a widespread component that peaks earlier in the frontal areas than the posterior regions (Mangun & Hillyard, 1991). When observed in posterior regions, it presents as an increased negative deflection when the location of the stimulus is attended (Luck, Woodman, & Vogel, 2000) and is modulated by angularity and luminance (Johannes, Munte, Heinze, & Mangun, 2003); furthermore, its mean amplitude difference between detected and undetected targets is used as a measure of attentional gain (i.e., amplification) for low level features (e.g., luminance, orientation, etc.; Luck *et al.*, 2000; see also; Byers & Serences, 2014). Moreover, very early components such as the N80 and the C1 (Jemel, Mimeault, Saint-Amour, Hosen, and Mottron, 2010) also play an important role in the visual processing

of luminance and contrast, and are indicators of visual resolution and contrast sensitivity (Butler, Martinez, Foxe, Kim, Zemon, Silipo *et al.* 2007).

Next, in the N2 latency, is the N2pc (N2-posterior-contralateral) component, which is a posterior negative deflection occurring contralateral to the attended visual field, and has been interpreted as a measure of attentional filtering that suppresses the processing of competing or irrelevant information (see Luck & Hillyard, 1994ab), and as an indication of an irregularity detection process that may occur during the presentation of pop-out stimuli (Berti & Schröger, 2006). This is also associated with awareness; although processes leading to awareness may be dissociable from attentional processes (Tononi & Koch, 2008), the latter influences the likelihood of information gaining access to consciousness (He & Raichle, 2009; for top-down modulation of early visual cortices see also: Roland *et al.*, 2006).

Finally, is the P3 component that is thought to reflect task difficulty and decision-making processing during visual search tasks (Luck & Hillyard, 1990), although its role is still under debate, since some researchers link the P3 to confidence of the decision making (Eimer & Mazza, 2005) whereas others relate it to awareness level (Salti, Bar-Haim, & Lamy, 2012), or even to the current conscious state reflecting visual working memory (VWM) encoding for further processing (in the form of its contra-ipsilateral waveform: SPCN, sustained posterior contralateral negativity; see Dehaene & Changeux, 2011; Robitaille, Marois, Todd, Grimault, Cheyne & Jolicoeur, 2010 ).

By manipulating low-level visual information (i.e., saliency), modulation of ERP components as well as changes in the power in the time-frequency domain allowed us to investigate limits in the allocation of attentional resources and see how they affect the propensity to neglect unexpected visual stimuli. An IB task was used (see Figure 1c) to obtain two classes of individuals that present high or low levels of inattention; this served as an

external measure for the level of inattention. We predicted that a differential brain response between the two groups may be identified whilst their brain activity was recorded during the Randmorph Task, and used to estimate the level of inattention.

Subjects were required to determine the presence or absence of a target-patch, while brain activity was recorded and used to obtain estimates of attentional gain and overall early brain response (N1 latency), as well as processing capacity (N2 latency) for varying saliency values. This allowed us to test the hypothesis that brain areas deployed for the early processing of visual information (i.e., V1...V4, parietal regions) may be differently sensitive/efficient to process low-level visual features (i.e., saliency) and this in turn may be associated with a high or low tendency to inattention. Although the interpretation for the psychophysical phenomenon of IB is still controversial, one possible explanation for IB is that it may occur as the result of a processing failure with attentional resources being depleted by the primary task leaving too few available for processing any unexpected stimulus. This failure may be due to the power of intrinsic oscillatory activity that prevents visual information from low-level processor to be granted access to awareness (mainly in theta, alpha and beta band: see Dehaene & Changeux, 2011; Jensen, Bonnefond, & VanRullen, 2012, Klimesch, 1999). Another possibility is that the unexpected stimulus/change may be processed but then inhibited and prevented from accessing awareness due to it being irrelevant to the primary task (Richards, Hannon, Vohra, & Golan, 2014).

IB participants have been shown to allocate resources inefficiently (e.g., attend distractors for longer than Non-IB) when engaged in a multi-object tracking IB task (Richards, Hannon, & Vitkovitch, 2010). We therefore predicted that limits in early visual processing in IB subjects might lead to a reduced or inefficient allocation of resources (i.e., resources are not allocated upon the targets), presenting a lower amplification during the N1

latency and diminished N2pc when performing a visual search task, particularly when the saliency of the targets is low. For example, Schubö, Wykowska and Müller (2007) found a modulation of the N2pc as a function of the texture segregation complexity (i.e., more visible targets lead to more negative amplitudes). Furthermore, since IB can be associated with low working memory capacity (WM, Hannon & Richards, 2010; Richards, Hannon, & Derakshan, 2010; Richards, Hannon, & Vitkovitch, 2010), WM and visual working memory (VWM) capacity estimates were obtained using respectively the Automated Operation Span task (AOSPAN, a general measure of WM; see Unsworth, Heitz, Schrock, & Engle, 2005), and the SPCN (sustained posterior contralateral negativity), a waveform which has been observed during conscious maintenance of stimuli in VWM during visual tasks (Dehaene & Changeux, 2011; Robitaille *et al.* 2010). Finally, since Papera *et al.* (2014) found that IB participants present longer RT during visual search pop-out tasks, we expect IB participants to present a lower modulation in the P3 latency reflecting a lower level of awareness/confidence (Eimer & Mazza, 2005; Salti *et al.*, 2012) during target presentation, particularly for low-saliency targets.

## **Methods**

### **Participants**

Thirty-five undergraduate students (7 males) aged 18 to 43 (mean=26.85; SD=7.62) took part in the study. All participants were from Birkbeck College, were naive about the purpose of the research, had normal or corrected-to-normal vision and participated for course credit. The study was approved by the Committee for Human Research at the Birkbeck College, University of London, UK.



## Experimental Paradigm and Stimuli

For the saliency estimation we used the 9-orientation filter saliency model presented in Papera, Cooper, and Richards (2014), as this produced a better saliency estimation allowing a finer discrimination of the brain response (compared to a 4-orientation filter model; Papera, Cooper, & Richards, 2014; Verma & McOwan, 2009). The saliency of artificial synthesised pictures was obtained using a genetic algorithm (GA) that uses the saliency model as its fitness function to produce an artificial process of Darwinian selection in order to maximise/minimise the visibility of the pop-out targets.

Participants performed the Automated Operation Span task (Unsworth, Heitz, Schrock, & Engle, 2005), the inattention blindness task and an EEG adaptation of Randmorph Task (one with a narrower saliency range; see Figure 1a). In the AOSPAN, participants are presented with a series of maths problems (between 3 and 7 per trial). After calculating each maths problem a letter is presented that has to be retained until the end of the trial. Each letter has to be identified in the order in which it appeared by clicking a mouse over a number matrix displayed on the screen. The maths problems have to be completed within a given time limit (calculated individually for each participant). A total of 75 maths problems are presented (in set sizes ranging from 3 to 7) resulting in a score between 0 and 75.

In a standard IB task participants are required to track a series of white Ls and Ts (but ignore similarly moving black Ls and Ts) as they move randomly on the screen when, after a few seconds, a moving red cross appears for several seconds (based on Most *et al.*, 2001; see also Simons, 2003). However, the status of this unexpected stimulus is ambiguous since it is not clear whether the most appropriate strategy in this task would be to, for example, ignore it, process it or process it and then, at a later stage inhibit it (Richards, Hannon, Vohra, &

Golan, 2014; Hannon & Richards, 2010; Richards, Hannon, & Derakshan, 2010; Richards, Hannon, & Vitkovitch, 2010). In order to manipulate the status of the unexpected stimulus to make it relevant during the dynamic task we used a new task in which one of the target stimuli undergoes an unexpected change directly relevant to the goal (one target, i.e., a green T, turns suddenly into another type of target, i.e., a blue F). The participants are required to monitor these two target types independently, and therefore a change in a target is relevant to the multi-target tracking primary task (e.g., Richards, Hannon, Vohra, & Golan, 2014). This allowed us to obtain a strong indication of high levels of inattention for those participants who failed to see the unexpected (yet relevant) change/stimulus; whereas, those who were able to see the change whilst performing the primary task would show a low level of inattention. A practice video was used before the presentation of the experimental video (33 s duration); the practice video involved 4 pairs of blue Fs, purple Ls, red Hs and green Ts bouncing off a black edge. The experimental video (same duration) that followed comprised the same set of letters until the change took place (18 s from the start of the video), after which 3 blue Fs and 1 green T were displayed.

Next, participants performed the EEG version of the Randmorph Task; its suitability for EEG recordings was first assessed to see whether it could be used with a narrower saliency range than the one used in Papera, Cooper and Richards (2014; i.e., from a 13.00–18.70 range to 15.00–19.00), and still produce a good prediction of human performance. The narrower range of saliency values for the images was found predictive of RT performance (assessed by regressing RT on saliency:  $p < .001$  for both model and predictor).

The new EEG Randmorph Task comprised 2400 trials; each cycle consisted of Target Present/Absent (TP/TA; 1200)  $\times$  Left/Right Visual Field (600)  $\times$  High/Low saliency (300). A new population bin of TP images ranging between 10.01 and 19.12 (N=4647) was produced

(for details of procedure see: Verma & McOwan, 2009; Papera, Cooper, & Richards, 2014). Two evenly distributed sets of images were selected (i.e., 150 each), from the population bin: one ranging between 16.40 and 16.82 (low saliency) and a second one between 18.00 and 19.12 (high saliency). For the analysis of the objective performance (i.e., RTs and accuracy), the full sets of values were used, whereas a dicotomic categorization was used for the EEG analysis (i.e., low/high respectively for the first and second set). Images with saliency values below 16.40 were not included because the pilot study showed that the targets may be too difficult to detect for the IB participants. To create two distinct saliency sets, images with saliency values between 16.82 and 18.00 were excluded. TA images were obtained by removing the target patch from the TP images and replaced it with a 4×4 patch made with the distractor Randmorph used in background. Eprime 2.0 was used to present the stimuli (Schneider, Eschman, & Zuccolotto, 2002). Image presentation was reduced to 100 ms, followed by the presentation of a mask for 1 s during which participants could provide a response. After a response was made, the image disappeared and a 500 ms blank screen was presented before the onset of the next trial. Each image was 22.7 × 22.9 cm (800 × 800 pixels subtending 15.84 × 15.97° angle) with a viewing distance of 80 cm and was presented on a 22-inch LCD HD monitor (Samsung syncmaster 2233). Participants were instructed to fixate on the central fixation cross at all times at the beginning of the Randmorph Task. EEG activity was inspected online during the task and participants were given verbal feedback at the end of each block whenever loss of fixation occurred during the familiarisation and experimental block.

The study was a two-part experiment. First, participants performed the AOSPAN and then the inattention blindness task. Next, due to the length of the Randmorph Task (i.e., 2 hours duration split into two sessions by a ten minutes break), the Randmorph task was performed in a separate session within 7 days of the first session.

## EEG recordings

Electrophysiological recordings were obtained from silver electrodes mounted in an elastic cap (Easy-Cap) with 23 locations according to the 10-20 system (FP1, FP2, F3, Fz, F4, F7, F8, FC1, FCz, FC2, FC5, FC6, C3, Cz, C4, CP5, CP6, P3, P4, P7, P8, O1, O2). All electrodes were referenced online to an averaged linked-earlobe. EEG recordings were filtered with a band-pass at 0.01 to 130Hz and sampled at 500Hz using a SynAmps amplifier (Neuroscan).

Horizontal electrooculogram (HEOG) measures were collected from 2 locations placed 1 cm to the right and left of the outer canthi of both eyes and impedances of all the electrodes were kept below 5K $\Omega$ . For the ERP analysis, the continuous EEG during the presentation of target-present arrays was epoched into 600 ms windows starting 200 ms before the onset of the array of stimuli and the following mask. (A baseline of a 200ms prior the onset of the image array was used). Epochs with no eye blinks ( $> 60 \mu V$ ), eye movements ( $> 30 \mu V/2^\circ$ ) or amplifier saturation above  $100 \mu V$  were not analysed. Since previous findings has shown that the N2pc may result remarkably sensitive to the direction of the gaze and be the result of eye movement artefact amplification (Lee, Cowan, Vogel, Rolan, Valle-Inclá, & Hackley, 2010), a criterion of  $30 \mu V$  for eye movements ensured that the target patch in the target-present pictures would be processed in the relevant contralateral and ipsilateral hemispheres. These criteria also ensured that mean amplitudes for the contralateral waveforms during the latency of interested would be below 3 microvolts (Lee *et al.*, 2010).

For the ERSP (event-related spectral perturbations), time-frequency decomposition was performed to investigate the level of alpha inhibition during the period prior the presentation of the stimuli arrays and during their visual processing (post-stimulus). To investigate ERSPs, continuous EEG during the presentation of target-present arrays was

epoched into 1250 ms windows starting 600 ms before the onset of the visual array and referenced to a 200 ms baseline 400 ms prior the onset of the stimuli. Due to a wider window the threshold for eye movements was set to 50  $\mu$ V.

The power spectrum was obtained using Fast-Fourier transforms with a sliding latency window of 143 samples (286 ms) wide over the 624 frames (–600 ms prior to presentation of the visual array to 648 ms after onset). The sliding latency window was applied 100 times at an average step of 6.24 (approx. 9.52 ms). 2-D ERSP plots resulted in a 39×100 decomposition (i.e., frequency × time), with central times of the 100 sub-windows ranging between –457 ms and 505 ms, whereas the frequency range of the evenly spaced frequency bins was from 2 Hz to 40 Hz. To normalise power changes in the time-frequency domain, log mean baseline power was subtracted. Taking the logarithm scale minimises the dominance of low frequencies, making the common power spectra more even for all frequencies analysed (see for instance, Delorme & Makeig, 2004).

### **Data Analysis and statistics**

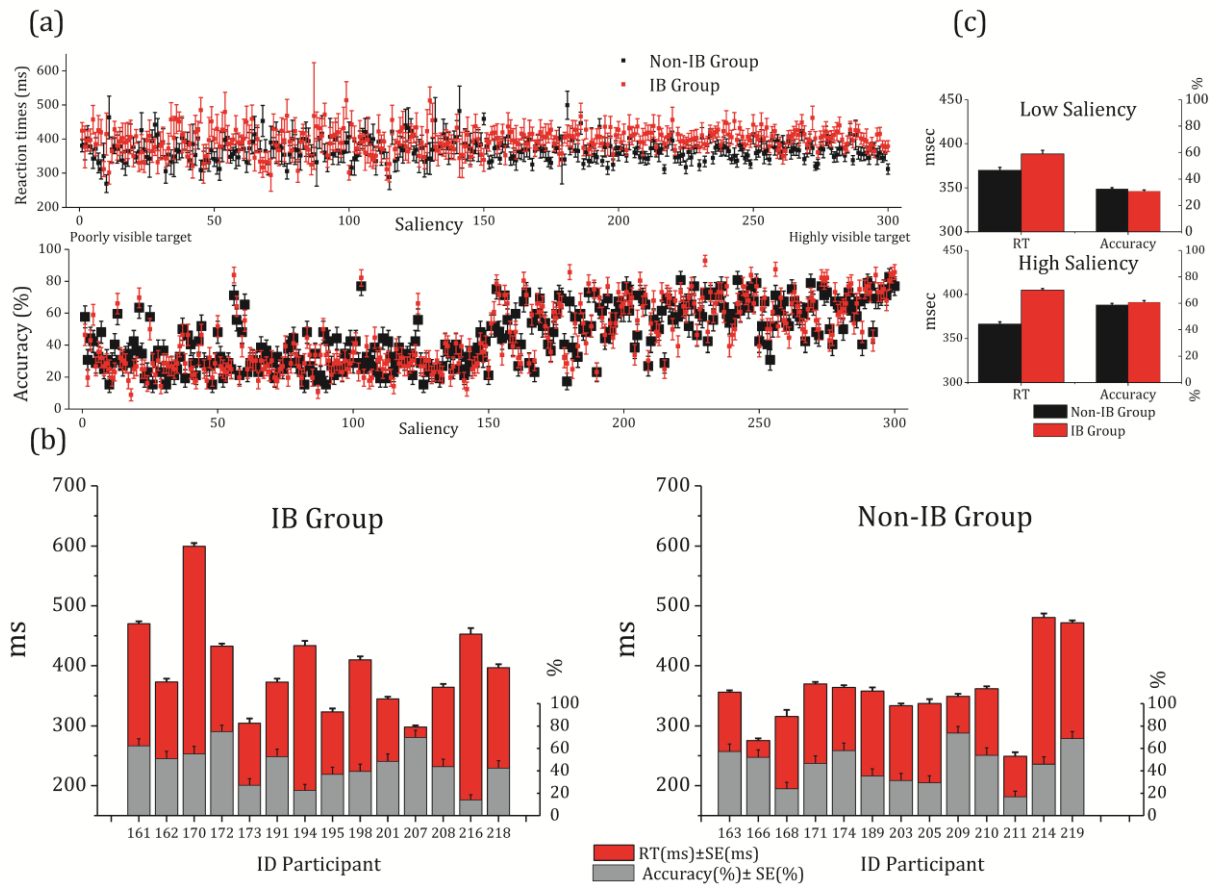
All statistical tests were performed using the Statistical Package for the Social Sciences (SPSS) 20.0. Participants with fewer than 17 maths errors on the AOSPAN test were included in the analysis. For the IB-status classification, participants who, when questioned immediately after the IB task, explicitly reported seeing the *actual* transition on the screen (i.e., a green T turning into a blue F) were classified as Non-IB. Participants who gave ambiguous reports (e.g., “Something changed but I cannot tell what”) or counted less than a minimum of 50% of the target hits (Ts and Fs combined) were excluded from further analysis, whereas all the other participants were classified as IB.

Overall, these criteria led to the exclusion of 8 participants (i.e., 4 participants provided an unclear report at the IB task; 1 participant was unclear and made more than 18

errors at the AOSPAN test; 3 participants were not naïve about the phenomenon of Inattentional Blindness).

For the ERP recordings, analysis was performed using the EEGLAB software package (<http://scn.ucsd.edu/eeglab/>), and custom-made MaTLab™ code. Trials where RTs were less than 150 ms were excluded from further analysis (also for the behavioural analysis and time-frequency decomposition). ERPs for the four different conditions under investigation (low and high TP images both for detected and undetected targets) were obtained based on the following number of trials:  $142 \pm 59$  (low saliency target detected),  $258 \pm 87$  (high saliency target detected),  $279 \pm 54$  (low saliency target undetected),  $119 \pm 25$  (high saliency target undetected). For the ERSPs, the number of accepted trials was on average  $333 \pm 92$  and  $403 \pm 108$  for low and high saliency respectively (trial where targets were detected/undetected were collated).

Visual inspection of the inter-subject and inter-saliency variability (random effects) was found consistent within the two groups for RT and accuracy (see Figure 2a-b), and therefore values across subjects were averaged. Hierarchical fixed-effects regression models were carried out separately upon accuracy and reaction time (RT) to assess the effect of saliency values (300 values) and of the participants' status (IB/Non-IB). To investigate the main effect of the groups when the saliency was at its mean value, saliency values were centred to their mean (for a justification see Echambadi & Hess, 2007).



**Figure 2** (a) The single trial inter-variability show that values for RT (top panel) and accuracy (bottom panel) are consistently overlapping within each group (i.e., they are liquid since error bars per each data point share part of their range of variation without major abrupt changes). Moreover intra-variability across trials/saliency levels is not large. (b) Bar charts showing averaged values for reaction time and accuracy during the presentation of low (1 to 150)/high (151 to 300) saliency targets. (c) Consistency is also observed across subjects for accuracy and reaction time. Although the pattern of results is consistent within each group both across trials and subjects, differences can be observed between the two groups. Although minor differences in accuracy are present, most of the IB participants present averaged RT around 375 ms or higher, whereas most of the Non-IBs below this value, consistently with cut-off values obtained from the ROC analysis (Figure 8b-c). Note: all error bars in part a-b-c depict standard error.

Mixed ANOVAs were performed to evaluate the experimental manipulations. Electrode pairs O1/2, P3/4 and P7/8 were clustered and used to investigate activity in the posterior regions. For the ERSPs analyses, the averaged mean amplitude values were obtained from the above defined cluster for the pre-stimulus latency (-400 ms to 0), and during the post-stimulus latencies of posterior components: N1 (130-190 ms), N2 (220-360 ms), and P3 (360-480 ms).

To obtain contralateral waveforms we subtracted the activity in the hemisphere contralateral from that ipsilateral to the locations of the targets. For the ERSPs, peak amplitude/power in the regions of interest (ROIs; see results) were obtained by extracting participants' peak amplitude/power showing the highest response across frequency-time bins (for a justification see: Güntekin, Emek-Savaş, Kurt, Yener, & Başar, 2013). Finally, hierarchical fixed-effects regressions were carried out to assess the predictory power of brain oscillations to elicit ERPs.

Gain (amplification) during the N1 latency and processing capacity during the N2 latency were calculated by subtracting the mean amplitude difference between the waveforms elicited when targets were detected and undetected (for examples see Dehaene & Changeux, 2011). For convenience the mean amplitude differences were multiplied by -1, thus positive values would indicate a higher amplification/capacity that allows to allocate resources towards the visual field where the target is presented (i.e., efficient allocation of resources/enhancement of the target); the opposite applies for negative values (i.e., inefficient amplification/diminished enhancement). However, absolute values for the attentional gain estimates during the latency of the N1 were used as a measure of amplification independent from the efficiency. For the overall brain response during the N1 latency, mean amplitudes were obtained irrespective of target detection and saliency level.

For the brain-behaviour analysis (ROC curves), RT and accuracy (collected during the presentation of low/high saliency targets), estimates of the attentional gain and overall brain response (N1), and processing capacity (N2) were analysed. Furthermore, to control for the effect of age, AOSPAN scores and ERPs/ERSPs measures were submitted to regression analyses using age, IB status and their interaction as regressors (see Supplementary Information).



## Results

### Objective performance

There were no differences between the IBs and non-IBs in either their AOSPAN scores ( $t(25) = -.55, p = .58$ ; two-tailed) or number of counts at the primary task during the IB task ( $t(25) = -.16, p = .87$ ; two-tailed). A ROC curve analysis was also performed on the number of counts for the IB task, showing no effects on the likelihood to notice the unexpected transition (Area Under the Curve,  $AUC = .51, CI_{95} = .29, .74$ ;  $z = .09, p = 0.88$ ).

For the Randmorph Task, accuracy and RTs were assessed separately using linear regressions as a function of saliency and IB status with Non-IB participants as the reference category. Table 1 shows the effects of each estimated regressor, their interactions, and proportion of variance accounted for.

**Table 1** Estimated standardised regressors for accuracy and reaction time along with their contribution to the overall variance accounted for by the regressional models.

	Saliency	R <sup>2</sup>	IB Status	R <sup>2</sup>	Saliency × IB Status	R <sup>2</sup>	Σ R <sup>2</sup>
Reaction Time	$\beta = -.26 (p < .03)$	0.7% ( $p < .05$ )	$\beta = .35 (p < .001)$	12.6% ( $p < .001$ )	$\beta = .36 (p < .01)$	1.3% ( $p < .01$ )	14.6%
Accuracy	$\beta = .59 (p < .001)$	55.1% ( $p < .001$ )	$\beta = .002 (p = .93)$	0% ( $p = .95$ )	$\beta = .15 (p = .07)$	0.2% ( $p = .07$ )	51.3%

Effects were found for accuracy, RTs, and IB status (see Figure 2c); these confirm findings from Papera, Cooper, and Richards (2014), who used the Randmorph Task (albeit with a larger saliency range) to discriminate between individuals showing a high sensitivity to quickly detect small changes in saliency (i.e., Non-IB individuals), compared to those (i.e., IB individuals) who require a higher level of saliency change to achieve a comparable RT performance.

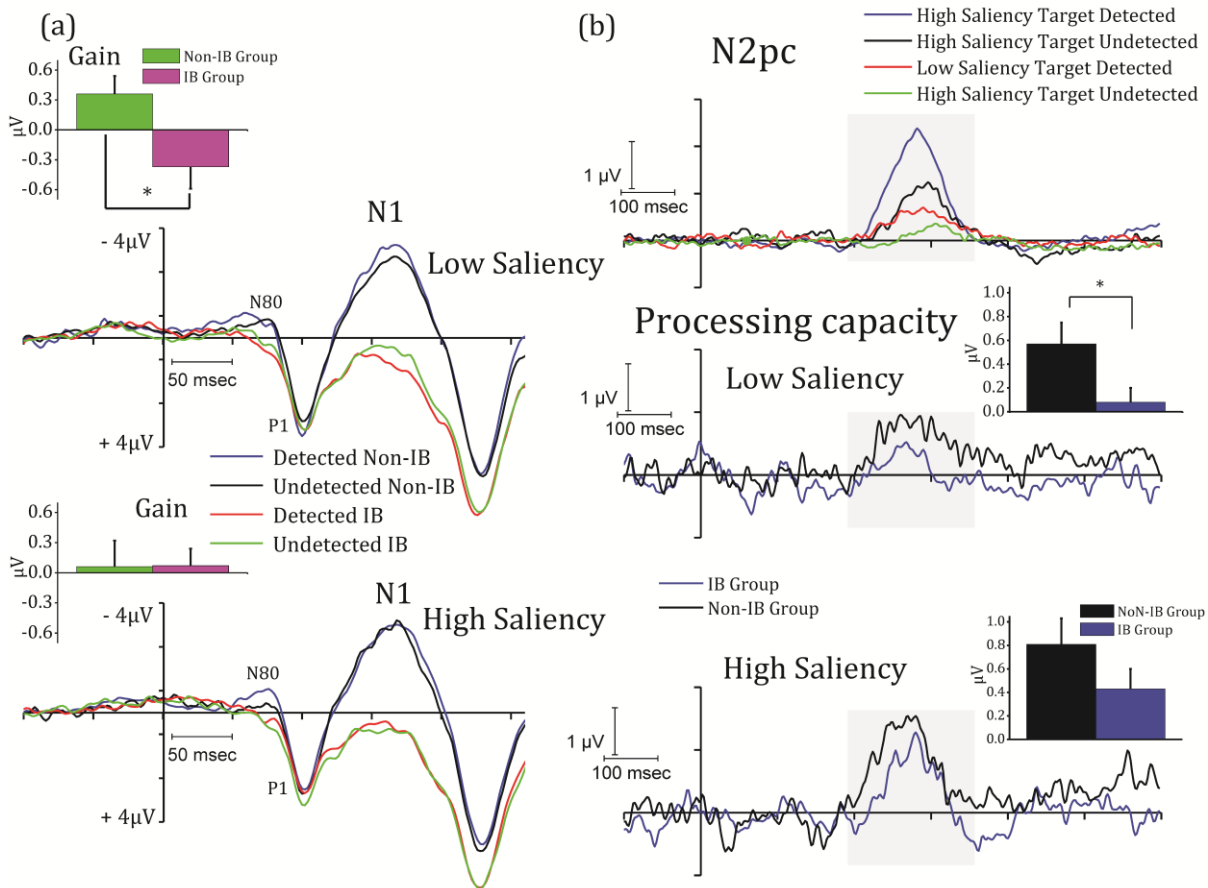
Although significant, saliency appears to have a small effect on RTs (i.e.,  $F(1,598) = 4.75, p < .001; R^2 = 0.07$ ; see Table 1), whereas IB status affects RTs more strongly (i.e., longer RTs;  $F(1,598) = 86.311, p < .001; R^2 = .126$ ). Conversely, accuracy is well predicted by saliency ( $F(1,598) = 733.684, p < .001; R^2 = .551$ ) with no effect of IB status ( $p = .95$ ). Overall IB participants are slower to become aware of the presence of a target when compared to the Non-IBs, whereas their accuracy to detect targets does not differ largely.

Estimates of behavioural sensitivity ( $d'$ ) and response bias ( $C$ ) were submitted to mixed ANOVAs. No group differences in sensitivity and response bias were found (see Supplementary Results).

### **Early amplification for attended targets**

ERPs were analysed using a regional approach (see Methods) in which mean amplitudes were submitted to mixed ANOVAs with saliency (high, low), target detection (detected, undetected), lateralisation (contralateral, ipsilateral brain activity relative to visual field) as within-subject factors, and IB-status (IB, Non-IB) as a between-subjects factor. Results showed evidence of modulation during the latencies of the N80 and C1, suggesting **an early modulation** in the processing of contrast and spatial frequencies at different level of saliency and depending whether targets were detected or not, albeit differences amongst the two groups were not significant (these findings are presented and discussed in the Supplementary Results).

For the N1, a main effect of IB-status and a 4-way interaction (target detection  $\times$  saliency  $\times$  lateralisation  $\times$  IB-status) were found ( $F(1,25) > 4.44, p < .05; \eta_p^2 = .19$  and  $\eta_p^2 = .15$  respectively for the main and interaction effects). Follow-up mixed ANOVAs performed separately for high and low saliency revealed an interaction between target detection and IB-status for low saliency targets ( $F(1,25) = 6.53, p < .02; \eta_p^2 = .2$ ; Figure 3a).



**Figure 3** (a) Grand averages for detected and undetected target: Inset figures show mean amplitude difference between detected and undetected targets (i.e. amplification/gain). Amplitudes are multiplied by -1 so that positive values show efficient allocation of resources. Compared to Non-IB, IB participants inefficiently attend low saliency TP images (top panel), although their amplification is comparable to the one of Non-IB subjects. Conversely when saliency is high (bottom panel) no differences are found in amplification or efficiency. (b) Top panel: Lateralisation of resources during the N2 latency (N2pc) during the presentation of low/high target-present images for when targets were detected or undetected. Mid-Bottom panels: processing capacity waveforms (difference detected/undetected) for low and high saliency in IB and Non-IB participants. Inset graphs show mean amplitude processing capacity during the latency of interest relative to the groups.

The attentional gain for the two groups was obtained to investigate the early amplification in detected and undetected trials. IB participants presented more negative mean amplitudes when targets are undetected than when detected:  $\bar{x}_{IB} = -.37\mu V$ ,  $\bar{x}_{NIB} = .36\mu V$  ( $t(25) = 2.55$ ,  $p < .02$ ; two-tailed; see top panel in Figure 3a – inset graph). We interpreted the more negative amplitudes in the IB group for undetected targets as evidence that resources

are allocated inefficiently since they do not lead to target detection *per se*. For instance, Van Voorhis and Hillyard (1977) found that amplitude changes in the N1 occur when attention was directed to the field in which the stimulus was presented (enhancement, i.e., more negative), whereas its amplitude was more positive when attention was directed in the field opposite to the one where the stimulus was presented. This suggests disengagement from the task when low salient targets are presented, and may be attributable to low sensitivity for low-level visual features. This is also consistent with poor enhancement in the following N2pc (see further).

However, both groups present comparable amplification when the absolute difference between detected and undetected target is assessed ( $|\bar{x}_{IB}| = .37\mu V$ ,  $|\bar{x}_{NIB}| = .36\mu V$ ;  $SE_{IB} = .22$ ,  $SE_{NIB} = .18$ ;  $t(25) = -.03$ ,  $p = .97$ ; two-tailed). In sum, to consciously report a low-saliency target, selection during the N1 latency requires higher amplification and efficient allocation of resources towards the visual field where the target is being presented.

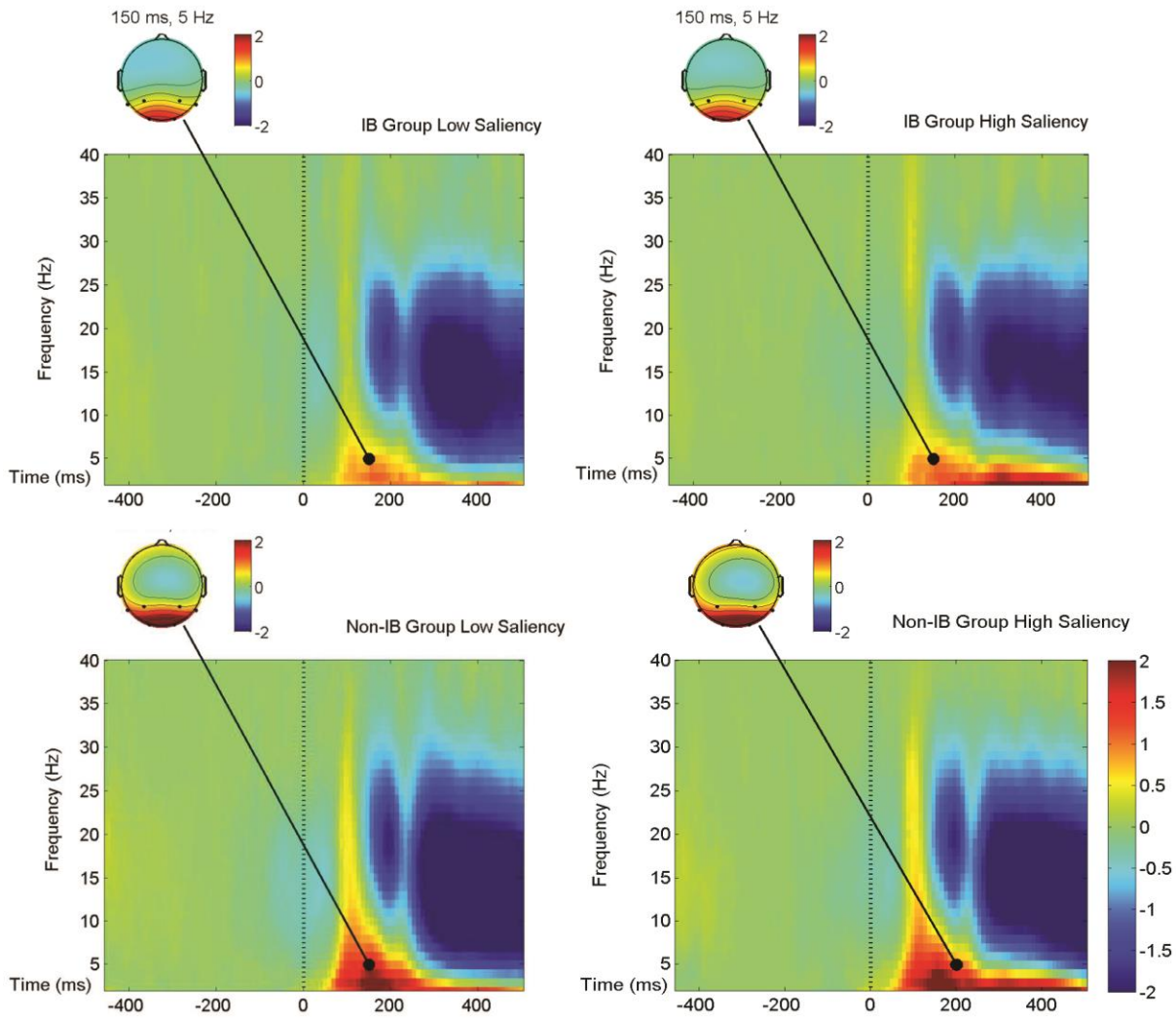
For high saliency targets, only a main effect of group was found ( $F(1,25) = 5.91$ ,  $p < .03$ ;  $\eta_p^2 = .19$ ) with no differences in attentional gain ( $\bar{x}_{IB} = .07$ ,  $\bar{x}_{NIB} = .06$ ;  $SE_{IB} = .26$ ,  $SE_{NIB} = .17$ ;  $t(25) = -.03$ ,  $p = .97$ ; two-tailed), suggesting that when saliency is high both detected and undetected targets elicit an equivalent amplification in both groups and no further resources have to be allocated at this early level of processing in order to select the target stimulus. Taken together these results are in line with the idea that when low saliency targets are presented, early visual areas are necessary to amplify a poorly visible target.

Finally, when the overall brain response at this latency was assessed (overall response in Figure 3a irrespective of target detection and saliency, i.e., main effect of the groups), early visual processing in IB compared to Non-IB individuals appears substantially reduced

( $\bar{x}_{IB} = -.86, \bar{x}_{NIB} = 2.33; SE_{IB} = .76, SE_{NIB} = 1.07; t(25) = 2.46, p < .03$ ; two-tailed; note: mean amplitudes were multiplied by -1, i.e. positive values show a stronger brain response; see Methods).

### **Role of intrinsic oscillatory activity during early visual processing**

A time-frequency decomposition to estimate event-related spectral perturbations (ERSP) was performed with the aim to investigate cortical changes in oscillatory power and inter-trial coherence (ITC) measures to assess phase coherence across trials (Figure 4 and 6). We explored the alpha band range in the pre-stimulus period since its modulation has been shown to predict performance and awareness of stimuli (Mathewson, Gratton, Fabiani, Beck, & Ro, 2009; Yamagishi, Callan, Anderson, & Kawato, 2008). Moreover, alpha, beta, and theta bands during the event-evoked period were also assessed since attentional allocation of resources is thought to play a multi-band (alpha, beta and theta) effect during visual processing (Güntekin, Emek-Savaş, Kurt, Yener, & Başar, 2013; Bastiaansen & Hagoort, 2003; Palva & Palva, 2007; Jensen, Bonnefond, & VanRullen, 2012). ROIs were identified on the basis of previous findings that showed increased alpha power during the period prior the presentation of a stimulus (Yamagishi *et al.*, 2008), but also in the N1 latency and in later processing (>300 ms) in a form of a dissociated alpha band modulation (i.e., early/late alpha enhancement/suppression; Rana & Vaina, 2014; Capilla, Schoffelen, Paterson, Thut, Gross, 2014; see also Palva & Palva, 2007); moreover, modulation in the theta and beta band have also been found to be respectively indicative of good performance (i.e., encoding the location of the target stimulus; Bastiaansen & Hagoort, 2003; Klimesch, 1999) and increased visual attention (Güntekin *et al.* 2013). Hence, the following ROIs were investigated: pre-stimulus alpha ( $f = 8-13$  Hz in the 400 ms latency prior the onset of the array), and post-stimulus for theta ( $f = 3-7$  Hz in the latency 110-240 ms), alpha and beta ( $f = 8-13$  Hz and  $f = 14-20$  Hz respectively, in the latencies: 110-190 ms and 250-485 ms).



**Figure 4** Event-related spectral perturbations (ERSPs) for the group-mean ERSP plots derived from the brain activity observed in the electrode pairs O1/2, P3/4 and P7/8. Spectral power increases are depicted in red whereas decreases in blue. The onset times of the stimulus array (0 ms) is indicated by a vertical broken line. Data are shown for low (left) and high (right) saliency targets, and for Non-IB (bottom panel) and IB individuals (top panel). The scalp maps are depicted at the ROI  $t = 150$  ms,  $f = 4$  Hz. Permutation statistics were computed from a distribution of 200 surrogate data trials; non-significant values in the output plots ( $\geq .05$ ) were zeroed and plotted in green.

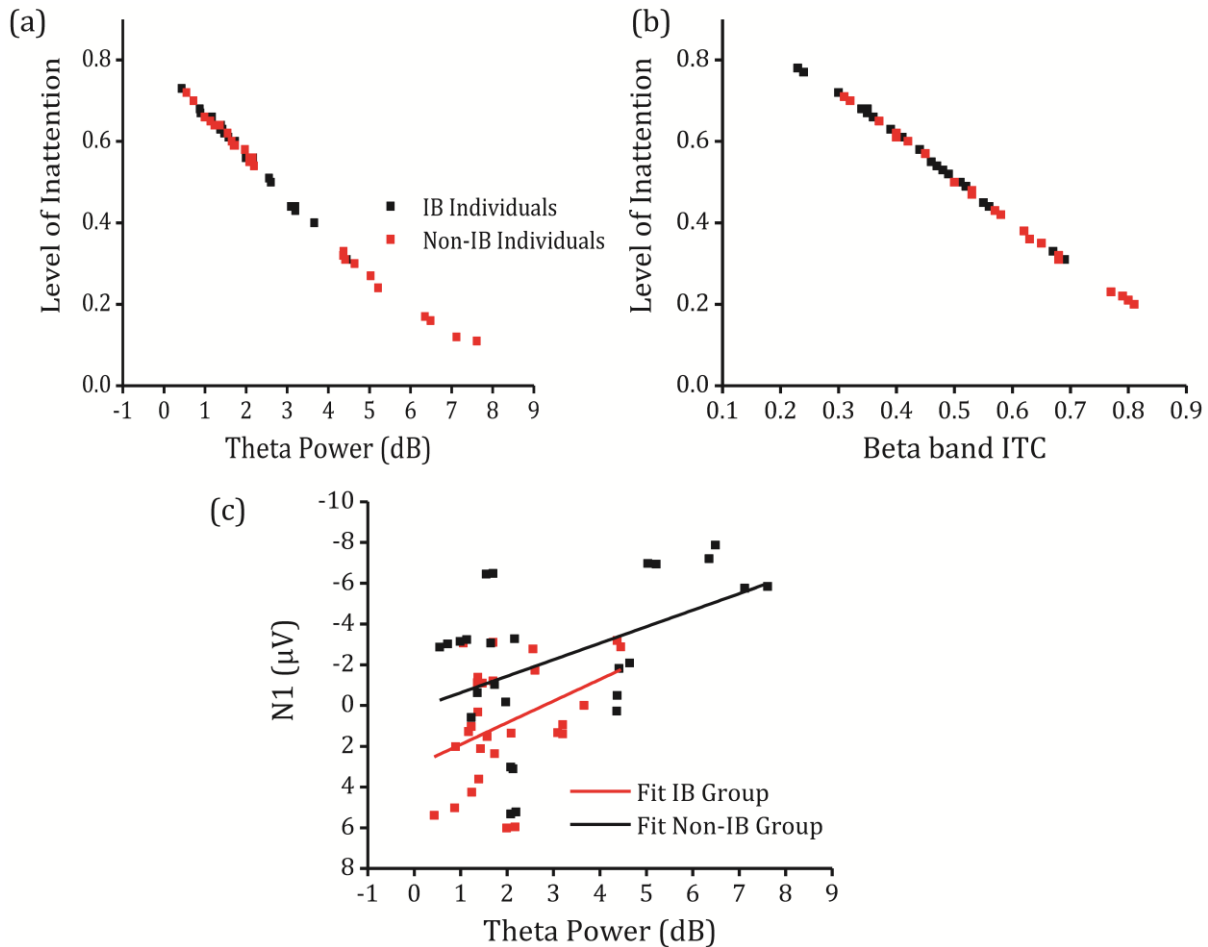
Power estimates (in dB) for the bands of interest and the level of saliency (low/high) were submitted to logistic regressions to test whether they were predictive of the level of inattention (similar analyses assessing behavioural performance on the basis of the power

estimates of frequency bands can be found in Yamagishi, Callan, Anderson, & Kawato, 2008, for pre-stimulus period; see also Jensen *et al.* 2012, for latency after the on-set of the array).

No differences were found during the period that preceded the onset of the stimulus array, nor in the early and late alpha and beta band after the stimulus onset (all  $p > .11$ ); however, although not significant, an early transient enhancement (latency 110-190 ms, i.e., more power) and a heavier sustained suppression (latency 250-485 ms, i.e., less power) during the post-stimulus latencies was observed for both alpha and beta bands in the Non-IB individuals compared to the IB. Following the findings of Capilla *et al.* (2014), Rana *et al.* (2014) and Güntekin *et al.* (2013) this may be the result of early inhibition of irrelevant visual information (i.e., target identification) concomitantly with a heavier allocation of resources at a later stage (>250 ms).

Effects were found for the theta band, whose power significantly predicted the level of inattention, although no effects of saliency were found ( $\chi^2(2) = 6.13, p = 0.04$ ; Nagelkerke  $R^2 = 0.14$ ;  $e^{\beta_{\theta\text{-power}}} = 1.53, W(1) = 4.98, p < .03$ ;  $CI_{95} = 1.05, 2.24$ ;  $e^{\beta_{\text{saliency}}} = 0.04, p = .93$ ), suggesting that for every one unit increase in positive theta power (in dB) the odds of presenting low level of inattention may be up to 2.24 times higher than with decreasingly more negative values (i.e., less intrinsic theta oscillatory activity; see Figure 5a).

The model including the interaction term was not significant ( $p = .10$ ), although the predictor for theta power remained significant. Since previous findings have shown that event-related recordings may be the direct results of underlying oscillatory activity (alpha: Van Dijk, H., van der Werf, Mazaheri, Medendorp, & Jensen, 2010; theta and delta range: Kayser, & Tenke, 2015), we further investigated this relationship with a linear regression analysis to evaluate the predictory power of theta brain oscillations to generate mean amplitudes in the N1 latency. The model included saliency, IB status, Theta power (dB) and



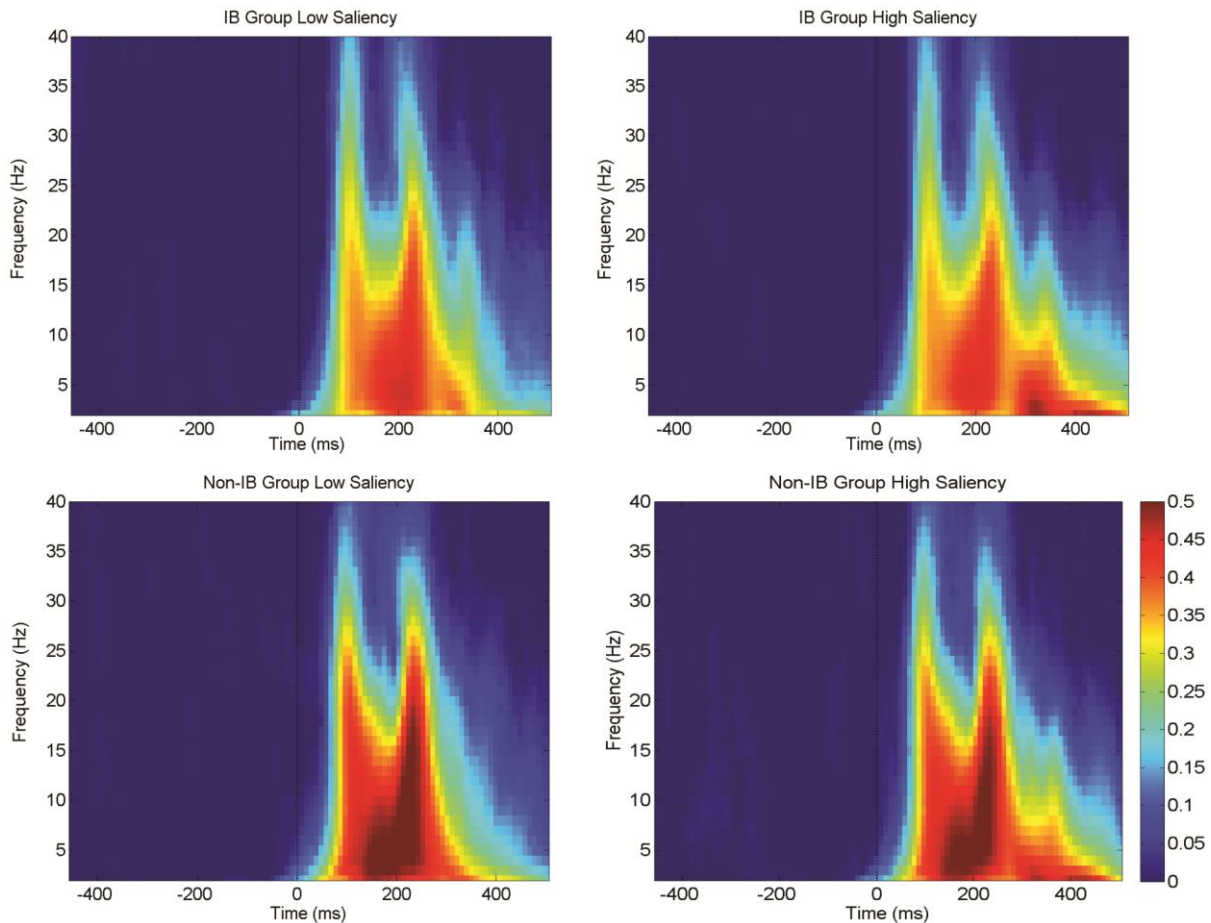
**Figure 5** The time-frequency ROI values for the theta band and ITC beta band values were used to predict the tendency to inattention. (a) Predicted probabilities of logistic regression models regressing the level of inattention (tendency to neglect the transition change at the IB task) on the theta power, (b) and on the beta band ITC. (c) Regression assessing the ability of brain oscillations in the theta band to produce cognitively event-related events (N1).

the interaction term IB status  $\times$  Theta power. Results show that the model including the regressors IB status and theta power was significant ( $F(2,51)=13.90, p<.001; R^2 = 0.34; \beta_{\theta\text{-power}} = .41, t = 3.38, p < .002; \beta_{\text{IB}}=.30, p<.02$ ; see Figure 5c); more negative mean amplitudes during the N1 latency were predicted by increasingly theta power. However, no effect of saliency nor interaction between IB status and theta power were found ( $\Delta R^2 = 0: F(1,50 \leq df \leq 49) < .15, p > .69$ ). This strong association between ERPs and ERSPs brings support to the idea that ERPs and oscillations may reflect a common mechanism (i.e., band power



producing event-related activity; see Van Dijk, van der Werf, Mazaheri, Mendendorp, & Jensen, 2010; Harper, J., Malone, S. M., & Bernat, 2014); furthermore, the IB status predictor also shows that this modulation may be differentiated in selected niches of individuals such as IBs and Non-IBs: compared to the same theta power, Non-IB participants produce stronger event-related potentials that appear to reflect a more abundant availability of resources for visual processing.

Similarly ROIs for the same bands were carried out to assess the inter-trial coherence (ITC; ranging from 0.5, non phase-locked, to 1, highly phase-locked) in the latencies 110-190 ms (early alpha and beta), 200-300 ms (late alpha and beta) and 110-240 ms (theta). Results show that activity in the bands of interest is significantly phase-locked to the presentation of the target arrays (see Figure 6) and appears to be elicited during the same ERPs latencies of interest (N1, N2, and P3). Logistic regression analyses were carried out. A significant predictor for the beta ITC during the 200-300 ms was found ( $e^{\beta_{\text{ITC}}} = 90.54, W(1) = 4.98, p < .03; CI_{95} = 1.73, 4723.17; e^{\beta_{\text{sal}}} = -.04, p = .93$ ; Figure 5b), although the resulting model (main effect of saliency and IB group) was only marginally significant ( $\chi^2(2) = 5.58, p = 0.06$ ; Nagelkerke  $R^2 = 0.13$ ). The model including the interaction term was also not significant ( $p > .13$ ). Surprisingly, the phase resetting of the beta power in the N2 latency appears highly phase-locked to the appearance of the target array and may increase the odds of presenting low levels of inattention by 90 times per one unit increase in ITC. Decreases in beta oscillatory power have been associated with sensory cortical activation (Güntekin *et al.* 2013). Analogously to the alpha power, which shows an early increase and later decrease, beta power may be involved in the early selection (N1) and later processing of visual information (approx. in the N2 latency; Capilla *et al.* 2014; Rana *et al.* 2014; Güntekin *et al.* 2013; see also Wróbel, 2000).



**Figure 6** Inter-trial coherence (ITC) for the group-mean ITC plots derived from the brain activity observed in the electrode pairs O1/2, P3/4 and P7/8. The ITC values range between 0 (blue) to  $>0.5$  (red). The onset times of the stimulus array (0 ms) is indicated by a vertical broken line. Data are shown for low (left) and high (right) saliency targets, and for Non-IB (bottom panel) and IB individuals (top panel). Permutation statistics were computed from a distribution of 200 surrogate data trials; non-significant values in the output plots ( $\geq .05$ ) were zeroed and plotted in blue.

Overall these results show that the amount of resources deployed during early visual processing (N1) is associated with a tendency to inattention. An intrinsic differential pattern of activity amongst the two groups can be observed and is consistent with the large effect observed during the N1 latency irrespective of the experimental manipulations (saliency and detection of target, see Figure 3a and previous section), the N2 (see next section) and consistent with the reaction time pattern (i.e., IB participants present slower responses and

decreased theta power, suggesting that they are slower to become aware of the target presence).

### **Deployment of spatial attention to target objects**

Figure 3b (top panel) shows the difference in amplitudes between contralateral and ipsilateral waveforms (i.e., N2pc) during the presentation of low and high saliency targets. Mean amplitudes were more negative in the hemisphere contralateral to the presentation of the target and for high compared to low salient images ( $F(1,25) > 8.68$ ,  $p < .01$ ; lateralisation:  $\eta_p^2 = .68$ ; saliency:  $\eta_p^2 = .25$ ). In addition, three-way interactions were found: Target Detection  $\times$  Lateralisation  $\times$  IB ( $F(1,25) = 4.50$ ,  $p < .05$ ,  $\eta_p^2 = .15$ ) and Target Detection  $\times$  Lateralisation  $\times$  Saliency ( $F(1,25) = 4.10$ ,  $p = .05$ ,  $\eta_p^2 = .14$ ); Target Detection  $\times$  Lateralisation and Saliency  $\times$  Lateralisation were subsumed but also significant without the third factor:  $F(1,25) > 21.26$ ,  $p < .001$ ,  $\eta_p^2 = .46$  and  $\eta_p^2 = .72$  respectively). When the target was not detected amplitudes were significantly more positive suggesting a poor allocation of attentional resources; this is consistent with the idea that the brain response during the N2pc reflects an in-depth attentional analysis of the visual information (Kiss, Grubert, Petersen, & Eimer, 2012).

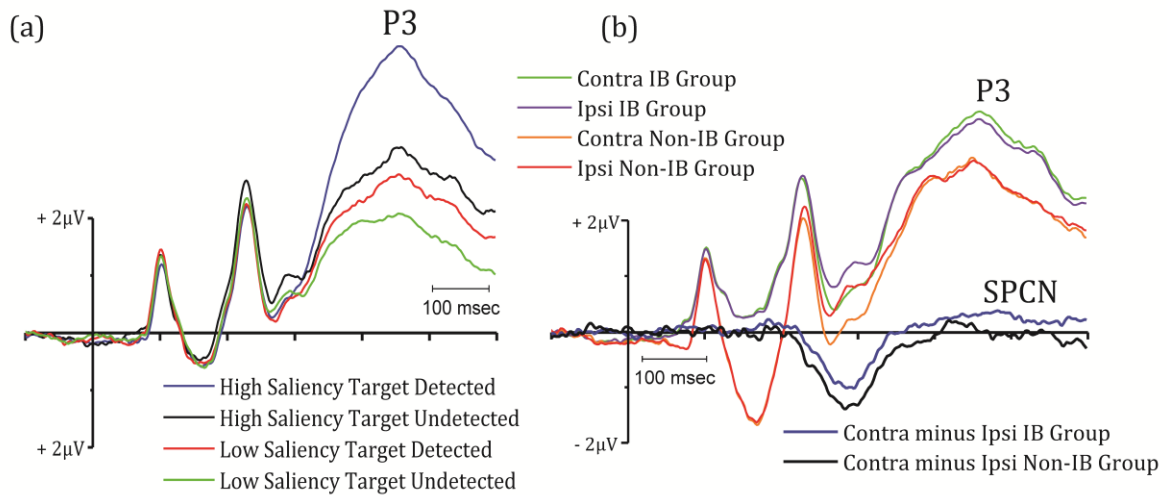
Since the N2pc has often been reported as a measure of attentional sensitivity/selectivity (for overviews see Woodman, Kang, Rossi, & Schall, 2007; Eimer, 1996), we estimated the *processing capacity*: a measure of target enhancement (see Methods). This resulted in IB participants having poor processing capacity at the Randmorph Task for low compared to high saliency targets; conversely, Non-IB participants present a higher processing capacity than IBs, in that enhancement of the N2pc is larger for both low and high saliency targets (Figure 3b – mid and bottom panel). This may enable Non-IB individuals to use part of these extra resources to capture a possible unexpected stimulus/change appearing on the screen.

Estimates of processing capacity were analysed in an ANOVA, with saliency as within-subject factor and IB-status as between factor. A main effect of saliency (marginal effect:  $F(1,25)=4.10, p=.05, \eta_p^2=.14$ ) and IB-status ( $F(1,25)=4.50, p<.05, \eta_p^2=.15$ ) with no interaction was found ( $F(1,25)=.16, p=.68$ ), suggesting that the differences in processing capacity are intrinsically due to a differential brain response to saliency in IB and Non-IB individuals rather than saliency *per se*. Post-hoc *t*-tests showed that capacity does not differ across the two groups when the saliency of the images is high ( $t(25) = 1.37, p = .18$ ; two-tailed), whereas a difference is present between the two groups when saliency is low ( $t(25) = 2.22, p < .05$ ; two-tailed), suggesting that participant's capacity varies as a function of the sensitivity to low-level visual features. A Further analysis excluded the possibility of a motor-planning contamination of the N2pc (for a justification Wykowska & Schubö, 2012; this analysis is presented in the Supplementary Results).

### **Maintenance of stimuli in visual working memory**

A mixed ANOVA was performed on the P3 mean amplitudes using the same factors as outlined above. Significant effects were found for high compared to low saliency targets and for detected compared to undetected targets. An interaction between saliency and target detection was also found ( $F_s(1,25) > 32.76, p_s < .001, \eta_p^2 = .74, \eta_p^2 = .65$  and  $\eta_p^2 = .56$  respectively for saliency, target detection and their interaction; see Figure 7a).

Post-hoc *t*-tests confirmed that mean amplitudes are significantly higher for both high and low saliency detected targets ( $t(26) < 3.64, p < .01$ , two-tailed, Cohen's *d*s: .7, low saliency; 1.61, high saliency), suggesting a higher level of confidence/awareness when targets are



**Figure 7** (a) ERPs averaged across the electrode pairs P3-4, P7-8 and O1-2 showing an enhanced P3 when high/low targets were detected (relatively to undetected targets). (b) Overall effects of lateralisation during the P3 latency (irrespective of response and level of saliency): compared to the Non-IB group, IB participants present evidence of lateralisation during the presentation of the low/high saliency targets. Difference between contralateral and ipsilateral waveforms (SPCN) are also depicted.

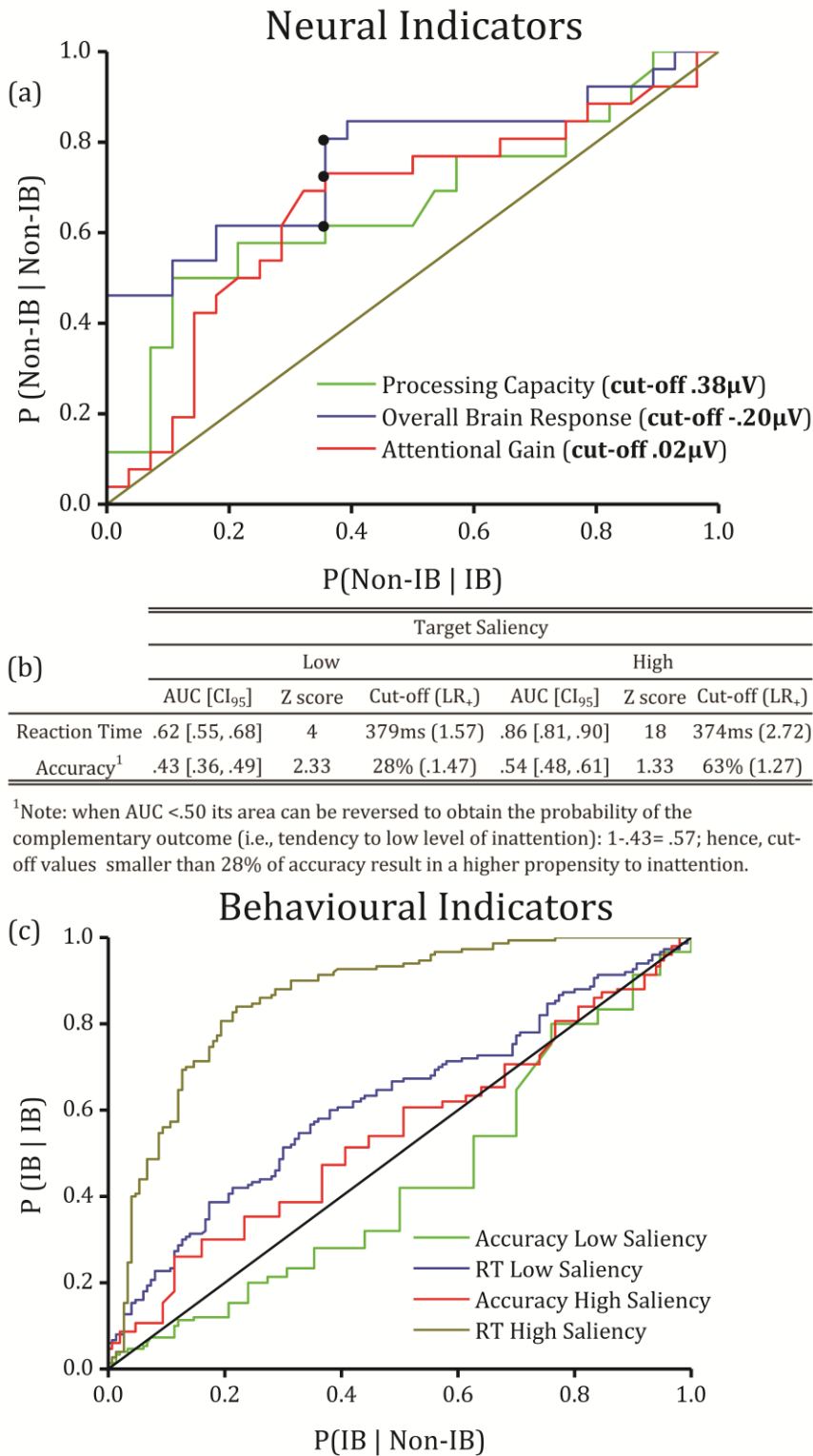
detected and saliency is high. Studies have controversially linked higher mean amplitudes during the P3 latency to a higher level of confidence (Eimer & Mazza, 2005) or awareness of the stimuli presented (Salti, Bar-Haim, & Lamy, 2012), making its interpretation ambiguous (see Discussion).

Although P3 mean amplitudes were not different between the two groups

( $F(1,25)=.86, p=.36, \eta_p^2=.03$ ) When lateralised brain activity associated with VWM was isolated from the P3 latency common source (i.e., SPCN; Robitaille, Marois, Todd, Grimault, Cheyne & Jolicoeur, 2010), group differences in the access to visual working memory were revealed (see Figure 7b and Supplementary Results). SPCN has been observed in visual search tasks that require conscious maintenance of visual information in VWM for target identification (Dehaene & Changeux, 2011; Rockstroh, Müller, Cohen, & Elbert, 1992).

### **Brain-behaviour indicators may be used to predict propensity to inattention?**

IB research suffers from a lack of repetition since following an exposure to an unexpected stimulus/change event the subject may have the expectation of another similar event, which renders the following trial a divided attention task rather than an IB task *per se*. In an attempt to address this inherent problem with IB research, we examined whether ERPs and objective performance on the Randmorph Task are predictive of IB-status. For the ERP components, a ROC analysis was performed using mean amplitudes during the posterior N1 (amplification and overall brain response), the N2 (processing capacity), and objective performance (RT and accuracy) to identify the optimum cut-off values for the above neural and behavioural indicators. Results show that the area under the ROC curve (AUC) for processing capacity, overall brain response (N1) and attentional gain (amplification) are respectively .66 ( $CI_{95} = .51, .82$ ;  $z = 2.28, p < 0.04$ ), .76 ( $CI_{95} = .63, .89$ ;  $z = 4.33, p < 0.01$ ) and .65 ( $CI_{95} = .50, .80$ ;  $z = 2.14, p < 0.05$ ). Optimal cut-off values for sensitivity and specificity were identified for the three estimates (circled in Figure 8a), suggesting that increasingly more positive values augment the tendency to see unexpected stimuli/changes by 1.74, 2.28 and 2.08 times (Positive Likelihood-Ratio,  $LR_+$ ) respectively for processing capacity, overall brain response and amplification. Furthermore, behavioural performance showed a high discriminatory power for RTs for both low and high saliency targets ( $p < .001$ ), whereas an effect for accuracy was found only for low saliency ( $p < .05$ ) but not for high saliency targets ( $p = .17$ ; see Figure 8b-c). In summary, IB and Non-IB individual differences in the visual processing when performing the Randmorph Task may be indicative of a tendency to inattention as a result of poor brain response and inefficient amplification (N1), but also low processing capacity (N2pc), making IB subjects less likely for the attentional capture of unexpected (yet relevant) visual changes/stimuli.



**Figure 8** (a) ROC curves for the three identified neural indicators show that IB and Non-IB participants have a differential brain response that may lead to a difference propensity to identify/neglect unexpected visual changes/stimuli when they are engaged in a demanding task. (b) Descriptive and inferential statistics for the ROC curve cut-off values estimated from the behavioural data (i.e. accuracy and reaction times); IB participants were used as the positive outcome state; values of accuracy and reaction time above the cut-off values are indicative of a tendency to neglect unexpected visual changes/stimuli (apart from accuracy during the presentation of low saliency target-present images,

where  $UAC < .50$  and therefore the interpretation is reverse, i.e., tendency to be Non-IB. Please see footnote at the bottom table). (c) Estimated ROC curves for accuracy and reaction times during the presentation of low and high saliency targets.

## Discussion

### Attentional limits influence the access of visual stimuli to awareness

Our results offer new insights into the brain mechanisms that may lead to the neglect of unexpected visual changes/stimuli in IB individuals. The present study shows that saliency estimation of low-level visual information may potentially be used in an EEG task as an alternative to the standard dynamic IB task to test indirectly for the propensity to inattentive blindness. This may be useful when participants are familiar with the phenomenon of IB (thus having expectations on the occurrence of unexpected stimuli), and also overcomes the inherent problem of the lack of repetition in IB research. We predicted the incidence of inattentive blindness by computationally manipulating low-level-feature based saliency that allowed us to estimate the differential allocation of attentional resources during visual search for the N1, N2 and P3 latencies. Overall, For N1/2, more negative amplitudes were more likely to be associated with target detection provided participants were *efficiently* allocating resources. For instance, during the presentation of the low saliency images, IB participants tend to allocate resources inefficiently since more negative amplitudes are observed when low saliency targets are *not* detected. This is also confirmed by the following poorly enhanced N2pc (i.e., Figure 3b mid and bottom panels), suggesting that during the N1 targets may not be selected, thus the enhancement of the target is largely diminished.

Results for the Randmorph Task have shown that IB and Non-IB individuals had comparable behavioural performance yet the Non-IBs appeared to have a resource *surplus* as they allocate more resources to detect a target. Non-IB subjects present extra amplification in



the N1 which is more likely to be the result of target selection, since the following N2pc amplitude is also largely enhanced. This appears to be in line with the hypothesis of the Global Network Workspace (GNW) proposed by Dehaene and Changeux (2005; 2011). Unexpected stimuli may be poorly selected in IB individuals during an early stage and this activity does not reach a dynamic threshold (a form of stochastic phase transition) that “ignites” allocation of resources during the N2 to achieve a synchronous spread of activation across several brain areas reflecting on-going conscious content (Dehaene & Changeux, 2011). Furthermore, intrinsic brain oscillations in the on-going activity (including gamma and beta bands, but also alpha and theta band: see Palva & Palva, 2007; Jensen, Bonnefond, & VanRullen, 2012) can prevent ignition by increasing this threshold, resulting in a purely feed-forward propagation that dies out with no ignition (for example a higher level of alpha power in the low level visual processors such as the N2 latency).

Our study showed differences in alpha power were not significant ( $p=.11$  and  $.33$  respectively for early and late alpha power ERSPs), although a trend can be observed with higher alpha power in IB participants, and maybe had an influence on some ERP components (e.g., N2 latency) and reduced detection rates, consistently with the Dehaene and Changeux’s (2011) framework. Nonetheless, theta power was found to influence the likelihood to detect unexpected changes; low power in the theta band at a low level appears to be associated to a lower deployment of resources (and alertness) and might be the reason why ignition for an unexpected stimulus in IB participants may be prevented. When enhancement (N2) of an unexpected sensory visual stimulus does not occur all the available resources may be allocated towards the expected target (i.e., no surplus of resources). Conversely, in Non-IB subjects, extra resources may be captured by a concomitant unexpected stimulus, allowing both stimuli to cross the threshold for ignition and gain access to awareness. Assuming that resources are allocated in a similar manner on an IB task, then this surplus of resources may

have the consequence of allowing the visual system to select and enhance targets as well as a possible unexpected but relevant change/stimulus.

There are two results that support this conclusion. First, the response of the participants is not a systematic motor response bias. Contrary to the findings of Wykowska and Schubö (2012) who showed a facilitation of the N2pc was due to motor-planning during a visual search task, we found that mean amplitudes for detected and undetected targets during this latency are comparable when no targets were presented (i.e., there is no facilitation). This suggests that a motor response effect, if any, would not be affected by the type of response (i.e., yes/no). Secondly, during the N1 the mean amplitude relation between detected and undetected targets appears to be consistent even when it is reversed (i.e., more negative mean amplitudes for when a target is undetected), since it shows that despite resources may be allocated towards the visual field where the target is *not* presented (and consequentially decreasing the likelihood of detecting a target), its absolute difference is still a measure of amplification, although allocated inefficiently. For instance, during the N1, IB subjects appear to allocate their resources inefficiently when saliency is low, suggesting disengagement/mind-wandering that may be due to poor resolution in the citoarchitecture of those **early** visual areas devoted to the analysis of orientational, spatial and luminance features (i.e., the visual system fails to find a pop-out). These differences may be reflected by modulation of **the N80 and C1 components (see section ‘Early Visual Evoked Potential’ in Supplementary Results; see also Butler, Martinez, Foxe, Kim, Zemon, Silipo *et al.* 2007; Jemel, Mimeault, Saint-Amour, Hosein, and Mottron, 2010).** **However, future research should disambiguate whether the modulation of these components is the direct result of an early sensitivity (higher in Non-IB participants), and if these effects are subject to attentional modulation.**

Differently, Richards, Hannon, Vohra, and Golan (2014), proposed that an irrelevant unexpected stimulus/change may be processed and then inhibited since it is not relevant to the goal of the task. However, in the current study the unexpected change was directly relevant to the task (i.e., a distractor turns into a target, thereby becoming part of the primary task), and therefore IB participants may have neglected this change as a result of a poorer processing capacity that prevented the stimulus from being processed and accessible to conscious report (rather than its status *per se*).

Dehaene and Changeux's (2011) explanation appears to be also consistent with the possible connection between IB and ADHD. For instance, Sauseng, Klimesch, Stadler, Schabus, Doppelmayr, Hanslmayr *et al.*, (2005) discuss that prefrontal alpha synchronisation may reflect top-down inhibition of the frontal areas in order to avoid these areas becoming involved in distracting new activities whilst a task is performed. This may also reflect in lesser feedback modulation towards the posterior areas to prevent the processing of unexpected incoming stimuli. In this sense, albeit Non-IB subjects maintain a good performance at the task at issue and have a larger capacity, they may be more easily "distracted" by incoming unexpected stimuli at no expense in performance (e.g., counts at the IB task did not differ amongst groups); Bresnahan, Anderson and Barry (1999) found that EEG of individuals with ADHD are characterised by increased theta activity that may be linked to impulsivity (see also the Supplementary Discussion for potential genetic links to the tendency to inattention). Our time-frequency analysis showed that for every unit increase in theta power Non-IB individuals present a heavier deployment of resources during the NI (i.e., more negative amplitudes). Early theta and alpha band together with later alpha activity may be crucial to modulate the level of inattention (Jensen *et al.*, 2012; Klimesch, 1999; see also Laufs, Krakow, Sterzer, Eger, Beyerle, Salek-Haddadi *et al.* 2003).

Bastiaansen and Hagoort, (2003) proposed that theta activity is related to changes in the cortico-hippocampal loops for both sensory and memory tasks, in that they both require use of VWM. They claim that theta activity observed in scalp-recorded EEG may provide a reflection of this activity at the cortical end of the loop. Hence, theta power increases after the presentation of targets should reflect an increase in activity in hippocampal–parietal circuits during the encoding of the target location. However, another explanation that accounts for this increase in theta power is the one proposed in Von Stein and Sarnthein (2000), suggesting that theta activity may be the result of an interaction between distal brain areas (e.g. frontal and posterior) during visual-spatial WM activity and conscious detection (Pins & Ffytche, 2003). According to this view the N1 may emerge from a phase-reset of the on-going oscillatory theta (and also alpha) band caused by the incoming visual stimulus (see also Jensen, Bonnefond, & VanRullen, 2012); this in turn would elicit the deployment of top-down resources from high-order areas leading to an enhancement of the N1 (Makeig, Westerfield, Jung, Enghoff, Townsend, Courchesne *et al.* 2002). This also raises the question that the sensitivity to low-level visual features as reflect as early visual evoked potentials (N80 and C1) may be involved in the theta phase-reset. Similarly, the N2 may be subject to analogous influences: alpha power during this latency may drive a multi-band change of activity linked to early top-down modulation for preparing early visual processors to receive visual inputs (Yamagishi, Callan, Anderson, & Kawato, 2008).

Palva and Palva (2007) discuss the subject of brain oscillations and report a series of studies on the role of theta band, where it was found synchronised with alpha and beta during stimulus processing and in response to task workload (see [11, 60] as cited in Palva & Palva, 2007). Moreover, neural correlates of consciousness are known to involve the formation of assemblies ([28, 58, 71, 75] as cited in Palva *et al.*, 2007) via recurrent processing from high-order areas (e.g., fronto-parietal network). As noted earlier, the GNW allows the prediction of

an interaction between sensory (low level) and fronto-parietal (higher level) regions that produces access of visual information to consciousness. Cell assemblies during the N1 latency may receive incoming top-down recurrent feedback resulting in a stronger enhancement of this component ([25, 29] as cited in Palva *et al.*, 2007). For instance, behavioural performance in our study shows that reaction times are shorter for Non-IB participants. If one is willing to assume that reactions are the reflection of the speed at which a participant becomes aware of the target stimulus, then our results might be consistent with this view.

Similar accounts have also been proposed by Capilla *et al.* (2014) and Rana *et al.* (2014) where two modulations are produced by two different sources: a parietal-occipital source reflecting location-based attention and a ventro-lateral extrastriate region processing the visual features of the incoming sensory stimulus. One possible problem with this interpretation is that IB participants may be more likely to present attentional lapses and/or be less motivated to perform the task as a result of their lesser attentional span; **IB participants find it harder to see targets in the Randmorph task than Non-IBs, as indexed by their slower RTs, and sub-sequentially may withdraw from performing the task.** Although in our study there was no evidence that the two groups differed in motivation (i.e., accuracy at the primary task in the IB task was comparable, and although significant, differences in performance at the Randmorph task were not large), this may confound the results. **Finding it hard to detect targets may favour mind wandering during their presentation.** Mind wandering can elicit a high-level oscillatory activity that prevents sensory stimuli to enter the broad network responsible for awareness (see also: Dehaene & Changeux, 2011). **Since performing a task with a high financial reward for performance will engage the attentional system stronger and with longer duration than performing the same task with no overt reward for performance (Oken, Salinsky, & Elsas, 2006),** one way to address this problem in future research may be

rewarding the participants on the basis of the trials correctly performed to ensure a high motivation at all times. This appears to improve the brain processing at a subliminal level (see for instance Pessiglione, Schmidt, Draganski, Kalisch, Lau, Dolan, & Frith, 2007), and also may help to test whether oscillatory activity is genuinely intrinsic to the brain processing and not the result of lack of motivation. Motivation has been shown to be related to an increased power in the theta band that results from the early discrimination (0-600 ms post-stimulus) of emotionally salient stimuli (positive or negative; Aftanas, Reva, Varlamov, Pavlov & Makhnev, 2004; see also: Aftanas, Varlamov, Pavlov, Makhnev, & Reva, 2001). Processing appears to be time-locked with synchronized theta activity (Aftanas *et al.*, 2001). Randmorphs may be experienced not only visually salient stimuli but also emotionally salient when a participant detects them. This may drive a stronger response in Non-IB participants as a result of their higher sensitivity to detect small changes in saliency of low-level visual features. Taken together these results show that theta activity may reflect a general state of brain alertness or heightened vigilance in the visual areas (hence better performance) that may decrease tendencies to inattention in situation of sustained attention.

This may also be consistent with the observation that P3 amplitudes (analogously to the N1), a component that has been controversially interpreted as reflecting conscious awareness (Salti, Bar-Haim, & Lamy, 2012) and confidence/perceptual task demands (Eimer & Mazza, 2005; Schubö, Wykowska, & Müller, 2007), may be modulated by theta oscillations (see for instance, Bresnahan *et al.*, 1999), suggesting a role in saliency detection that may be associated with high confidence/awareness of visual stimuli. We found no significant differences in the modulation of the P3 between IB and Non-IB participants (although a different trend in the two groups was observed for the P3; see Figure 7b); however, the P3 appeared strongly influenced by target detection and saliency. Salti *et al.* (2012) found that when the level of confidence is controlled the P3 amplitude is still

modulated, supporting the idea the P3 is associated with conscious perception rather than a reflection of the confidence of the participant's decision.

When P3 contra- and ipsilateral waveforms were investigated (i.e., SPCN), our results showed a difference in the overall level of awareness between IB and Non-IB as interpreted in Dehaene and Changeux (2011; Rockstroh, Müller, Cohen, & Elbert, 1992). The modulation of the SPCN found in IB participants may be associated with more effort to maintain a conscious VWM representation of the targets (recruitment of a smaller sub-population of neurons/global inhibition) and not with their memory capacity, since no differences were found in the AOSPAN test, a measure that (amongst others: Jost, Bryck, Vogel, & Mayr, 2010) has been found to correlate with ERP components thought to reflect VWM capacity (e.g., Contralateral Delay Activity observed during change detection tasks; see for instance McCollough, Machizawa & Vogel, 2007). However, because of inconsistencies amongst previous findings the hypothesis proposed in Rockstroh, Müller, Cohen and Elbert (1992; global inhibition hypothesis; see Supplementary Results; see also Dehaene & Changeux, 2011) still remains an unproven hypothesis in terms of a direct link between the scalp recorded activity signalling excitation/inhibition and respectively when negative or positive deflections are observed; this is still nowadays opposed to the enhanced perception hypothesis (i.e., a global temporary increase enhance the processing of stimuli; see for instance Brown, van Steenbergen, Band, de Rover & Nieuwenhuis, 2012).

### **Implications in human risk assessment and interventions**

The present study provides strong evidence that poor selection (N1) and subsequent diminished enhancement (N2) may be associated with a tendency to neglect an unexpected stimulus/change. Although this is informative in characterizing the extent of the brain response in IB and Non-IB individuals, it is a correlational measure and cannot be used to make a strong statement of causality. To evaluate causality one may vary the set size during

the Randmorph Task to assess if the pool of resources is shared across several targets to investigate if this increases the incidence of IB whilst the saliency of a concomitantly presented unexpected change/stimulus is manipulated. This would assess whether or not during the N1 and N2 latencies an unexpected stimulus/change is able to capture a surplus of resources that would otherwise be allocated to targets. This would provide support to those models of attention that propose a pool of resources that can be allocated to a certain number of items in the visual array, with each item receiving a smaller portion of resources as their number increases (i.e., flexible resources models: see Bays, Catalao, & Husain, 2009). However, as the number of items increases, it would be less likely that the  $n$ -th item will trigger the threshold for ignition and gain access to consciousness. This has also been observed in those studies supporting discrete resource allocation (McCollough *et al.*, 2007), since a drop in the attentional allocation of resources can be observed when capacity is exceeded.

Our approach demonstrated that saliency can be computationally manipulated to investigate differential brain processing into two groups of individuals that present a different propensity to neglect visual stimuli. This approach may aid developments of assessment systems to identify individuals that present a tendency to visual neglect, as well as potential interventions to mitigate this tendency such as perceptual learning. For instance, it is possible to assess the minimum change increase in saliency ( $\Delta S$ ) necessary for an IB participant to allocate a comparable amount of resources as Non-IB participants towards an unexpected stimulus/change by computationally generate unexpected stimuli of varying saliency. Our method would also allow a measure of the effect of training in IB participants who may consequentially produce a heavier allocation of resources during the N2pc latency (see for instance: An, Sun, Wang, Wang, Ding, & Song, 2012), but also efficient attentional selection



in the N1 latency. This may be achieved by gradually decreasing the saliency of the stimuli presented.

In summary, the EEG version of the Randmorph Task may provide a useful measure of inattention based on an estimation of the subject's attentional gain, overall brain response and processing capacity, as well as a useful method to assess the effect of perceptual training and the amount of saliency necessary to detect unexpected stimuli for participants who show a propensity to neglect them. Furthermore, results in our study suggest that limits in attentional resources, sensitivity to low-level visual features, and low theta power in the low-level visual processors may play the role of precursor to trigger ignition of a widespread activation responsible for the awareness of a relevant change/stimulus in a complex visual scene, such as an IB task.

## References

Aftanas, L.I., Reva, N.V., Varlamov, A.A., Pavlov, S.V., & Makhnev, V.P. (2004). Analysis of evoked EEG synchronization and desynchronization in conditions of emotional activation in humans: temporal and topographic characteristics. *Neuroscience and Behavioral Physiology*, 34, 859–867. DOI: 10.1023/B:NEAB.0000038139.39812.eb

Aftanas, L.I., Varlamov, A.A., Pavlov, S.V., Makhnev, V.P., & Reva, N.V. (2001). Affective picture processing: event-related synchronization within individually defined human theta band is modulated by valence dimension. *Neuroscience Letters*, 303(2), 115–118. DOI: 10.1016/S0304-3940(01)01703-7

An, A., Sun, M., Wang, Y., Wang, F., Ding, Y., & Song, Y. (2012). The N2pc is increased by perceptual learning but is unnecessary for the transfer of learning. *PLoS ONE*, 7(4): e34826. DOI: 10.1371/journal.pone.0034826

Arcos-Burgos, M., Jain, M., Acosta, M.T., Shively, S., Stanescu, H., Wallis, D., *et al.* (2010). A common variant of the latrophilin 3 gene, LPHN3, confers susceptibility to ADHD and predicts effectiveness of stimulant medication. *Molecular Psychiatry*, 11, 1053-1066. DOI: 10.1038/mp.2010.6

Bastiaansen, M.C.M., & Hagoort, P. (2003). Event-induced theta responses as a window on the dynamics of memory. *Cortex*, 39(4-5), 967-992. DOI: [http://dx.doi.org/10.1016/S0010-9452\(08\)70873-6](http://dx.doi.org/10.1016/S0010-9452(08)70873-6)

Bays, P. M., Catalao, R. F. G., & Husain, M. (2009). The precision of visual working memory is set by allocation of a shared resource. *Journal of Vision*, 9, 1-11. DOI:10.1167/9.10.7.

Berti, S., & Schröger, E. (2006). Visual distraction: a behavioral and event-related brain potential study in humans. *NeuroReport*, 17(2), 151–155. DOI: 10.1097/01.wnr.0000195669.07467.e1

Bresnahan, S., Anderson, J., & Barry, R., (1999). Age-related changes in quantitative EEG in attention deficit disorder. *Biological Psychiatry*, 46, 1690–1697. DOI: [http://dx.doi.org/10.1016/S0006-3223\(99\)00042-6](http://dx.doi.org/10.1016/S0006-3223(99)00042-6)

Brown, S. B. R. E., van Steenbergen, H., Band, G. P. H., de Rover, M., & Nieuwenhuis, S. (2012). Functional significance of the emotion-related late positive potential. *Frontiers in Human Neuroscience*, 6, 33. DOI: <http://doi.org/10.3389/fnhum.2012.00033>

Budau, J. (2011). Inattention blindness: present knowledge, recent research and implications for the nuclear industry. *32nd Annual Canadian Nuclear Society conference and 35th CNS/CNA student conference* 45(18). DOI: not available

Butler, P. D., Martinez, A., Foxe, J. J., Kim, D., Zemon, V., Silipo, G., et al. (2007). Subcortical visual dysfunction in schizophrenia drives secondary cortical impairments. *Brain*, 130, 417–430. DOI: 10.1093/brain/awl233

Byers, A., & Serences, J.T. (2014). Enhanced attentional gain as a mechanism for generalized perceptual learning in human visual cortex. *Journal of Neurophysiology*, 112, 1217-1227. DOI: 10.1152/jn.00353.2014

Capilla, A., Schoffelen, J.M., Paterson, G., Thut, G., & Gross, J. (2014). Dissociated  $\alpha$ -band modulations in the dorsal and ventral visual pathways in visuospatial attention and perception. *Cerebral Cortex*, 24(2):550-61. DOI: 10.1093/cercor/bhs343

Dehaene, S., & Changeux J. P. (2005). Ongoing Spontaneous Activity Controls Access to Consciousness: A Neuronal Model for Inattention Blindness. *PLOS Biology*, 3(5): e141. DOI:10.1371/journal.pbio.0030141.

Dehaene, S., & Changeux, J.P. (2011). Experimental and theoretical approaches to conscious processing. *Neuron*, 70(2), 200-227. DOI: 10.1016/j.neuron.2011.03.018

Delorme, A., & Makeig, S. (2004). EEGLAB: an open source toolbox for analysis of single-trial EEG dynamics including independent component analysis. *Journal of Neuroscience Methods*, 134(1), 9–21. DOI: 10.1016/j.jneumeth.2003.10.009

Echambadi, R., & Hess, J.D. (2007). Mean-Centering Does Not Alleviate Collinearity Problems in Moderated Multiple Regression Models. *Marketing Science*, 26(3), 438-445.

DOI: <http://dx.doi.org/10.1287/mksc.1060.0263>

Eimer, M. (1996). The N2pc component as an indicator of attentional selectivity. *Electroencephalography and Clinical Neurophysiology*, 99, 225-234. DOI:10.1016/0013-4694(96)95711-9

Eimer, M., & Mazza, V. (2005). Electrophysiological correlates of change detection. *Psychophysiology*, 42, 328-342. DOI: 10.1111/j.1469-8986.2005.00285.x

Green, G. (2003). Inattention blindness and conspicuity.  
<http://www.visualexpert.com/Resources/>.

Güntekin, B., Emek-Savaş, D. D., Kurt, P., Yener, G. G., & Başar, E. (2013). Beta oscillatory responses in healthy subjects and subjects with mild cognitive impairment. *NeuroImage : Clinical*, 3, 39–46. DOI:10.1016/j.nicl.2013.07.003

Hannon, E. M., & Richards, A. (2010). Is inattention blindness related to individual differences in visual working memory capacity or executive control functioning? *Perception*, 39, 309–319. DOI:10.1068/p6379

Harper, J., Malone, S. M., & Bernat, E. M. (2014). Theta and delta band activity explain N2 and P3 ERP component activity in a go/no-go task. *Clinical Neurophysiology : Official Journal of the International Federation of Clinical Neurophysiology*, 125(1), 124–132. DOI: <http://doi.org/10.1016/j.clinph.2013.06.025>

Harris, D. (2011). *Human Performance on the Flight Deck*. Aldershot: Ashgate.

He, B.J., & Raichle, M.E. (2009). The fMRI signal, slow cortical potential and consciousness. *Trends Cognitive Science (Regular Edition)*, 13, 302–309. DOI: 10.1016/j.tics.2009.04.004

Jemel, B., Mimeault, D., Saint-Amour, D., Hosen, A., Mottron, L. (2010). VEP contrast sensitivity responses reveal reduced functional segregation of mid and high filters of visual channels in Autism. *Journal of Vision*, 10(6):13, 1–13. DOI: 10.1167/10.6.13

Jensen, M.S., Yao, R., Street, W.N., & Simons, D.J. (2011). Change blindness and inattention blindness. *Cognitive Science*, 2(5), 529-546. DOI: 10.1002/wcs.130

Jensen, O., Bonnefond, M., & VanRullen, R. (2012). An oscillatory mechanism for prioritizing salient unattended stimuli. *Trends in Cognitive Sciences*, 16(4), 1364-66. DOI:10.1016/j.tics.2012.03.002

Johannes, S., Munte, T.F., Heinze, H.J., & Mangun, G.R. (2003). Luminance and spatial attention effects on early visual processing. *Cognitive Brain Research*, 2(3), 189-205. DOI: 10.1016/0926-6410(95)90008-X.

Jost, K., Bryck, R.L., Vogel, E.K., & Mayr, U., (2010). Are old adults just like low working memory young adults? Filtering efficiency and age differences in visual working memory. *Cerebral Cortex*, 21, 1147-1154. DOI:10.1093/cercor/bhq185

Kayser, J., & Tenke, C.E. (2015). Hemifield-dependent N1 and event-related theta/delta oscillations: An unbiased comparison of surface Laplacian and common EEG reference choices. *International Journal of Psychophysiology*, 7(3), 258-70. DOI: 10.1016/j.ijpsycho.2014.12.011

Kiss, M., Grubert, A., Petersen, A., & Eimer, M. (2012). Attentional Capture by Salient Distractors during Visual Search Is Determined by Temporal Task Demands. *Journal of Cognitive Neuroscience*, 24(3), 749–759. DOI: 10.1162/jocn\_a\_00127.

Klimesch, W. (1999). EEG alpha and theta oscillations reflect cognitive and memory performance: a review and analysis. *Brain research reviews*, 29, 169-195. DOI: 10.1016/S0165-0173(98)00056-3

Laufs, H., Krakow, K., Sterzer, P., Eger, E., Beyerle, A., Salek-Haddadi, A., & Kleinschmidt, A. (2003). Electroencephalographic signatures of attentional and cognitive default modes in spontaneous brain activity fluctuations at rest. *Proceedings of the National Academy of Sciences of the United States of America*, 100(19), 11053–11058. <http://doi.org/10.1073/pnas.1831638100>

Lee, E. Y., Cowan, N., Vogel, E. K., Rolan, T., Valle-Inclan, F., & Hackley, S. A. (2010). Visual working memory deficits in patients with Parkinson's disease are due to both reduced storage capacity and impaired ability to filter out irrelevant information. *Brain*, 133, 2677-2689. DOI: 10.1093/brain/awq197

Luck, S. J., Woodman, G. E., & Vogel, E. K. (2000). Event-related potential studies of attention. *Trends in Cognitive Sciences*, 4, 432-440. DOI: [http://dx.doi.org/10.1016/S1364-6613\(00\)01545-X](http://dx.doi.org/10.1016/S1364-6613(00)01545-X)

Luck, S.J., & Hillyard, S.A. (1994b). Spatial filtering during visual search: evidence from human electrophysiology. *Journal of Experimental Psychology: Human Perception and Performance*, 20, 1000–1014. DOI: 10.1037/0096-1523.20.5.1000

Luck, S.J., & Hillyard, S.A. (1990). Electrophysiological evidence for parallel and serial processing during visual search. *Perception & Psychophysics*, 48, 603–617. DOI: 10.3758/BF03211606

Luck, S.J., & Hillyard, S.A. (1994a). Electrophysiological correlates of feature analysis during visual search. *Psychophysiology*, 31, 291–308. DOI: 10.1111/j.1469-8986.1994.tb02218.x

Maccari, L., Casagrande, M., Martella, D., Anolfo, M., Rosa, C., Fuentes, L.J., & Pasini, A. (2013). Change blindness in children with ADHD: a selective impairment in visual search?. *Journal of Attention Disorders*, 17(7), 620-7. DOI: 10.1177/1087054711433294

Mack, A., & Rock, I. (1998) *Inattentional Blindness*. MIT Press.

Makeig, S, Westerfield, M., Jung, T.P., Enghoff, S., Townsend, J., Courchesne, E., *et al.* (2002) Dynamic brain sources of visual evoked responses. *Science* 295, 690–694. DOI:10.1126/science.1066168

Mangun, G.R., & Hillyard, S.A, (1991). Modulations of sensory-evoked brain potentials indicate changes in perceptual processing during visual-spatial priming. *Journal of Experimental Psychology: Human perception and performance*, 17(4), 1057-1074. DOI: 10.1037//0096-1523.17.4.1057

Mathewson, K.E., Gratton, G., Fabiani, M., Beck, D.M., & Ro, T. (2009). To see or not to see: prestimulus alpha phase predicts visual awareness. *Journal of Neuroscience*, 29, 2725–2732. DOI: 10.1523/JNEUROSCI.3963-08.2009

McCollough, A.W., Machizawa, M.G., Vogel, E.K. (2007). Electrophysiological measures of maintaining representations in visual working memory. *Cortex*, 43, 77–94. DOI: 10.1016/S0010-9452(08)70447-7

Most, S. B., Simons, D. J., Scholl, B. J., Jimenez, R., Clifford, E., & Chabris, C. F. (2001). How not to be seen: The contribution of similarity and selective ignoring to sustained inattention blindness. *Psychological Science*, 12, 9–17. DOI: 10.1111/1467-9280.00303

Most, S.B., B.J., Scholl, Clifford, E.R., & Simons, D.J. (2005). What you see is what you set: sustained inattention blindness and the capture of awareness. *Psychological Review*, 112(1), 217–242. DOI: 10.1037/0033-295X.112.1.217

Musson. D. (2009). Putting behavioural markers to work. Developing and evaluating safety training in healthcare settings. In R. Film & L. Mitchell (Eds). *Safer surgery: Analysing behaviour in the operating theatre* (p. 423-435). Aldershot: Ashgate. DOI: not available

Oken, B. S., Salinsky, M. C., & Elsas, S. M. (2006). Vigilance, alertness, or sustained attention: physiological basis and measurement. *Clinical Neurophysiology : Official Journal of the International Federation of Clinical Neurophysiology*, 117(9), 1885–1901.  
<http://doi.org/10.1016/j.clinph.2006.01.017>

Palva, S. & Palva, J.M. (2007). New vistas for alpha-frequency band oscillations. *Trends in Neuroscience*, 30(4):150-8. DOI: <http://dx.doi.org/10.1016/j.tins.2007.02.001>

Papera, M., Cooper, P.C., & Richards, A. (2014). Artificially created stimuli produced by a genetic algorithm using a saliency model as its fitness function show that Inattentional Blindness modulates performance in a pop-out visual search paradigm. *Vision Research*, 97, 31-44. DOI: 10.1016/j.visres.2014.01.013



Paries, J. & Amalberti, R. (1995). Recent trends in aviation safety: From individuals to organisational resources management training. *Risøe National Laboratory Systems Analysis Department Technical Report*. Series 1 (pp. 216-228). Roskilde, Denmark: Risøe National Laboratory.

Pessiglione, M., Schmidt, L., Draganski, B., Kalisch, R., Lau, H., Dolan, R.J., & Frith, C.D. (2007). How the brain translates money into force: A neuroimaging study of subliminal motivation. *Science* 316, 904–906. DOI: 10.1126/science.1140459

Pins, D. & Ffytche, D. (2003) The neural correlates of conscious vision. *Cerebral Cortex* 13, 461–474. DOI: 10.1093/cercor/13.5.461

Rana, K. D., & Vaina, L. M. (2014). Functional Roles of 10 Hz Alpha-Band Power Modulating Engagement and Disengagement of Cortical Networks in a Complex Visual Motion Task. *PLoS ONE*, 9(10), e107715. doi:10.1371/journal.pone.0107715

Richards, A., Hannon, E., & Derakshan, N. (2010). Predicting and manipulating the incidence of inattention blindness. *Psychological Research Psychologische Forschung*, 74, 513–523. DOI: 10.1007/s00426-009-0273-8

Richards, A., Hannon, E., & Vitkovitch, M. (2010). Distracted by distractors: Eye movements in a dynamic inattention blindness task. *Consciousness and Cognition*, 21, 170–176. DOI: 10.1016/j.concog.2011.09.013

Richards, A., Hannon, E., Vohra, S. I., & Golan, J. (2014). Tales of the unexpected: attentional awareness; goal-relevance and prior exposure to an unexpected change. *Psychology of Consciousness: Theory, Research, and Practice*, 1(3), 284-291. DOI: <http://dx.doi.org/10.1037/cns0000021>

Robitaille, N., Marois, R., Todd, J., Grimault, S., Cheyne, D., & Jolicoeur, P. (2010). Distinguishing between lateralized and nonlateralized brain activity associated with visual short-term memory: fMRI, MEG, and EEG evidence from the same observers. *Neuroimage*, 53(4), 1334–1345. DOI:10.1016/j.neuroimage.2010.07.027

Rockstroh, B., Müller, M., Cohen, R., & Elbert, T. (1992). Probing the functional brain state during P300 evocation. *Journal of Psychophysiology*, 6, 175–184. DOI: not available

Roland, P.E., Hanazawa, A., Udemann, C., Eriksson, D., Tompa, T., Nakamura, H., *et al.* (2006). Cortical feedback depolarization waves: a mechanism of top-down influence on early visual areas. *Proceedings of the National Academy of Sciences of the United States of America*, 103, 12586–12591. DOI: 10.1073/pnas.0604925103

Salti, M., Bar-Haim, Y., & Lamy, D. (2012). The P3 component of the ERP reflects conscious perception, not confidence. *Consciousness and Cognition*, 21, 961–968. DOI: 10.1016/j.concog.2012.01.012

Sauseng, P., Klimesch, W., Stadler, W., Schabus, M., Doppelmayr, M., Hanslmayr, S., *et al.* (2005). A shift of visual spatial attention is selectively associated with human EEG alpha activity. *European Journal of Neuroscience*, 22(11), 2917–26. DOI: 10.1111/j.1460-9568.2005.04482.x

Schneider, W., Eschman, A., & Zuccolotto, A. (2002). *E-Prime User's Guide*. Pittsburgh: Psychology Software Tools, Inc.

Schubö, A., Wykowska, A., Müller, H. J. (2007). Detecting pop-out targets in contexts of varying homogeneity: Investigating homogeneity coding with event-related brain potentials (ERPs). *Brain Research*, 1138, 136–147. DOI: 10.1016/j.brainres.2006.12.059

Simons, D. J. (2003). Surprising studies of visual awareness (DVD). Champaign, IL: Viscog Productions. <<http://www.viscog.com>>.

Tononi, G., & Koch, C. (2008) The neural correlates of consciousness: an update. *Annals of the New York Academy of Sciences*, 1124, 239–261. DOI: 10.1196/annals.1440.004

Unsworth, N., Heitz, R.P., Schrock, J.C., & Engle, R.W. (2005). An automated version of the operation span task. *Behavior Research Methods*, 37, 498-505. DOI: 10.3758/BF03192720

Van Dijk, H., van der Werf, J., Mazaheri, A., Medendorp, W. P., & Jensen, O. (2010). Modulations in oscillatory activity with amplitude asymmetry can produce cognitively relevant event-related responses. *Proceedings of the National Academy of Sciences, USA*, 107, 900-905. Doi: 10.1073/pnas.0908821107

Van Voorhis, & Hillyard, S.A. (1977). Visual evoked potentials and selective attention to points in space. *Perception and Psychophysics*, 22(1): 54-62.

Verma, M. & McOwan, P. W. (2009). Generating customised experimental stimuli for visual search using Genetic Algorithms shows evidence for a continuum of search efficiency. *Vision Research*, 49, 374–382. DOI:10.1016/j.visres.2008.11.006

Von Stein, A., & Sarnthein, J. (2000). Different frequencies for different scales of cortical integration: from local gamma to long range alpha/theta synchronization. *International Journal of Psychophysiology*;38:301–313.

Woodman, G.F., Kang, M.S., Rossi, A.F., & Schall, J.D. (2007) Nonhuman primate event-related potentials indexing covert shifts of attention. *Proceedings of the National Academy of Sciences of the United States of America*, 104(38), 15111-6. DOI: 10.1073/pnas.0703477104

Wróbel, A., 2000. Beta activity: a carrier for visual attention. *Acta neurobiologiae Experimentalis* 60, 247–260.

Wykowska, A., & Schubö, A. (2012). Action intentions modulate allocation of visual attention: electrophysiological evidence. *Frontiers in Psychology*, 3, 379. DOI: 10.3389/fpsyg.2012.00379

Yamagishi, N., Callan, D.E., Anderson, S.J., & Kawato, M. (2008). Attentional changes in pre-stimulus oscillatory activity within early visual cortex are predictive of human visual performance. *Brain Research* 1197, 115–122. DOI: 10.1016/j.brainres.2007.12.063

## **Author Notes**

M. P. conceptualized, designed the Randmorph Task and the experiment. A. R. designed the IB task. M. P. analysed the data. M. P. and A. R. wrote the paper.

**Tables**

	IB Status	$\Delta R^2$	Saliency	$R^2$	Saliency $\times$ IB Status	$\Delta R^2$	$\Sigma \Delta R^2$
Reaction Time	$\beta=.35$ ( $p < .001$ )	12.6% ( $p < .001$ )	$\beta=-.26$ ( $p < .03$ )	0.7% ( $p < .05$ )	$\beta=.36$ ( $p < .01$ )	1.3% ( $p < .01$ )	14.6%
Accuracy	$\beta=.002$ ( $p = .93$ )	0% ( $p = .95$ )	$\beta=.59$ ( $p < .001$ )	55.1% ( $p < .001$ )	$\beta=.15$ ( $p = .07$ )	0.2% ( $p = .07$ )	51.3%

## Figure and Table Captions

**Table 1** Estimated standardised regressors for accuracy and reaction time along with their contribution to the overall variance accounted for by the regressional models.

**Figure 1** (a) Example images of the Randmorph Task (top) and associated saliency map (bottom; for implementation see Papera, Cooper, & Richards, 2014). The Randmorph Task comprises a set of unique artificial stimuli that have no reference with real-life objects to produce a pop-out effect. Thus, effect of strategic processing can be controlled for. Images with increasingly higher saliency present a more visible pop-out target. Targets were presented four times, once in each of the four locations. (b) Experimental procedure: A fixation cross is presented for 1.5 s and is followed by the test array for 100 ms. This is replaced by a mask for 1 s during which participants can make a response. A blank screen was presented for 0.5 s before the presentation of the next trial. (c) In the IB task, participants track two blue Fs and two green Ts as they move in a linear but randomly around the screen and silently count how many times the Fs and Ts separately hit the frame on the screen but to ignore similarly moving distractors (i.e., orange Hs and purple Ls; see Richards, Hannon, Vohra, & Golan, 2014). Several seconds into the task, a green T unexpectedly turned into a blue F. This was an unexpected, yet task-relevant, change. Participants, who report seeing the *actual* transition when questioned at the end of the task (and performed with an accuracy of at least 50% the primary task), are classified as Non-IB, providing a strong evidence of high propensity to neglect unexpected visual changes/stimuli. Those participants not reporting having seen the transition are classified as IB, as they show a tendency to neglect something unexpected (and task-relevant) appearing on the screen.

**Figure 2** (a) The single trial inter-variability show that values for RT (top panel) and accuracy (bottom panel) are consistently overlapping within each group (i.e., they are liquid

since error bars per each data point share part of their range of variation without major abrupt changes). Moreover intra-variability across trials/saliency levels is not large. (b) Bar charts showing averaged values for reaction time and accuracy during the presentation of low (1 to 150)/high (151 to 300) saliency targets. (c) Consistency is also observed across subjects for accuracy and reaction time. Although the pattern of results is consistent within each group both across trials and subjects, differences can be observed between the two groups. Although minor differences in accuracy are present, most of the IB participants present averaged RT around 375 ms or higher, whereas most of the Non-IBs below this value, consistently with cut-off values obtained from the ROC analysis (Figure 8b-c). Note: all error bars in part a-b-c depict standard error.

**Figure 3** (a) Grand averages for detected and undetected target: Inset figures show mean amplitude difference between detected and undetected targets (i.e. amplification/gain). Amplitudes are multiplied by -1 so that positive values show efficient allocation of resources. Compared to Non-IB, IB participants inefficiently attend low saliency TP images (top panel), although their amplification is comparable to the one of Non-IB subjects. Conversely when saliency is high (bottom panel) no differences are found in amplification or efficiency. (b) Top panel: Lateralisation of resources during the N2 latency (N2pc) during the presentation of low/high target-present images for when targets were detected or undetected. Mid-Bottom panels: processing capacity waveforms (difference detected/undetected) for low and high saliency in IB and Non-IB participants. Inset graphs show mean amplitude processing capacity during the latency of interest relative to the groups.

**Figure 4** Event-related spectral perturbations (ERSPs) for the group-mean ERSP plots derived from the brain activity observed in the electrode pairs O1/2, P3/4 and P7/8. Spectral power increases are depicted in red whereas decreases in blue. The onset times of the stimulus array (0 ms) is indicated by a vertical broken line. Data are shown for low (left) and



high (right) saliency targets, and for Non-IB (bottom panel) and IB individuals (top panel). The scalp maps are depicted at the ROI  $t = 150$  ms,  $f = 4$  Hz. Permutation statistics were computed from a distribution of 200 surrogate data trials; non-significant values in the output plots ( $\geq .05$ ) were zeroed and plotted in green.

**Figure 5** The time-frequency ROI values for the theta band and ITC beta band values were used to predict the tendency to inattention. (a) Predicted probabilities of logistic regression models regressing the level of inattention (tendency to neglect the transition change at the IB task) on the theta power, (b) and on the beta band ITC. (c) Regression assessing the ability of brain oscillations in the theta band to produce cognitively event-related events (N1).

**Figure 6** Inter-trial coherence (ITC) for the group-mean ITC plots derived from the brain activity observed in the electrode pairs O1/2, P3/4 and P7/8. The ITC values range between 0 (blue) to  $>0.5$  (red). The onset times of the stimulus array (0 ms) is indicated by a vertical broken line. Data are shown for low (left) and high (right) saliency targets, and for Non-IB (bottom panel) and IB individuals (top panel). Permutation statistics were computed from a distribution of 200 surrogate data trials; non-significant values in the output plots ( $\geq .05$ ) were zeroed and plotted in blue.

**Figure 7** (a) ERPs averaged across the electrode pairs P3-4, P7-8 and O1-2 showing an enhanced P3 when high/low targets were detected (relatively to undetected targets). (b) Overall effects of lateralisation during the P3 latency (irrespective of response and level of saliency): compared to the Non-IB group, IB participants present evidence of lateralisation during the presentation of the low/high saliency targets. Difference between contralateral and ipsilateral waveforms (SPCN) are also depicted.

**Figure 8** (a) ROC curves for the three identified neural indicators show that IB and Non-IB participants have a differential brain response that may lead to a difference propensity to

identify/neglect unexpected visual changes/stimuli when they are engaged in a demanding task. (b) Descriptive and inferential statistics for the ROC curve cut-off values estimated from the behavioural data (i.e. accuracy and reaction times); IB participants were used as the positive outcome state; values of accuracy and reaction time above the cut-off values are indicative of a tendency to neglect unexpected visual changes/stimuli (apart from accuracy during the presentation of low saliency target-present images, where  $UAC < .50$  and therefore the interpretation is reverse, i.e., tendency to be Non-IB. Please see footnote at the bottom table). (c) Estimated ROC curves for accuracy and reaction times during the presentation of low and high saliency targets.