

Tilburg University

Two-year outcome of quality of life and health status for the elderly with chronic limb-threatening ischemia

Peters, Chloe M. L.; Lodder, Paul; de Vries, Jolanda; Steunenberg, Stijn L.; Veen, Eelco J.; de Groot, Hans G. W.; Ho, Gwan H.; van der Laan, Lijckle

Published in:

Clinical Interventions in Aging

DOI:

[10.2147/CIA.S272078](https://doi.org/10.2147/CIA.S272078)

Publication date:

2020

Document Version

Publisher's PDF, also known as Version of record

[Link to publication in Tilburg University Research Portal](#)

Citation for published version (APA):

Peters, C. M. L., Lodder, P., de Vries, J., Steunenberg, S. L., Veen, E. J., de Groot, H. G. W., Ho, G. H., & van der Laan, L. (2020). Two-year outcome of quality of life and health status for the elderly with chronic limb-threatening ischemia. *Clinical Interventions in Aging*, 15, 2383-2395. <https://doi.org/10.2147/CIA.S272078>

General rights

Copyright and moral rights for the publications made accessible in the public portal are retained by the authors and/or other copyright owners and it is a condition of accessing publications that users recognise and abide by the legal requirements associated with these rights.

- Users may download and print one copy of any publication from the public portal for the purpose of private study or research.
- You may not further distribute the material or use it for any profit-making activity or commercial gain
- You may freely distribute the URL identifying the publication in the public portal

Take down policy

If you believe that this document breaches copyright please contact us providing details, and we will remove access to the work immediately and investigate your claim.

Two-year Outcome of Quality of Life and Health Status for the Elderly with Chronic Limb-threatening Ischemia

This article was published in the following Dove Press journal:
Clinical Interventions in Aging

Chloé ML Peters¹
Paul Lodder^{2,3}
Jolanda de Vries^{2,4}
Stijn L Steunenbergh¹
Eelco J Veen¹
Hans GW de Groot¹
Gwan H Ho¹
Lijckle van der Laan^{1,5}

¹Department of Surgery, Amphia Hospital, Breda, The Netherlands; ²Department of Medical and Clinical Psychology, Tilburg University, Tilburg, The Netherlands; ³Department of Methodology and Statistics, Tilburg University, Tilburg, The Netherlands; ⁴Department of Medical Psychology, Elisabeth-TweeSteden Hospital Tilburg University, Tilburg, The Netherlands; ⁵Department of Cardiovascular Science, UZ Leuven - University Hospitals, Leuven, Belgium

Purpose: In elderly patients with chronic limb-threatening ischemia (CLTI), there is little scientific understanding of the long-term changes of quality of life (QoL) and health status (HS) after treatment. The primary goal of this study was to provide long-term QoL and HS results for elderly CLTI patients after therapy. Treatments consisted of endovascular revascularization, surgical revascularization, or conservative treatment. Furthermore, the aim of this study was to identify the distinctive trajectories of QoL and HS.

Patients and Methods: CLTI patients aged ≥ 70 years were included in a prospective observational cohort study with a two-year follow-up. The WHOQOL-BREF was used to assess QoL. The 12-Item Short Form Health Survey was used to measure HS. The QoL and HS scores were compared to the scores in the general elderly Dutch population. Latent class trajectory analysis was used.

Results: A total of 195 patients were included in this study. After two years, in all treatment groups patients showed significantly higher physical QoL score compared to baseline and there was no significant difference with the corresponding values in the elderly Dutch population. In the latent class trajectory analysis, there were no overlapping risk factors for poorer QoL or HS.

Conclusion: This study shows that QoL levels in surviving elderly CLTI patients in the long-term do not differ from the corresponding values for elderly in the general population. There were no disparities in sociodemographic, clinical and treatment characteristics associated with poorer QoL and HS. This study was carried out to encourage further analysis of the influence of biopsychosocial characteristics on QoL and HS in elderly CLTI patients.

Keywords: quality of life, health status, peripheral arterial disease, frail elderly, chronic limb-threatening ischemia

Introduction

The end stage of peripheral arterial disease is represented by chronic limb-threatening ischemia (CLTI). This disease is characterized by ischemic rest pain and/or tissue necrosis.¹⁻³ CLTI diminishes quality of life (QoL) considerably and is associated with high mortality and morbidity rates.⁴⁻⁷ Revascularization (surgical or endovascular) is the cornerstone in the treatment of CLTI patients.¹ However, scientific data is scarce to determine the best revascularization management in elderly (aged ≥ 70 years) CLTI patients.⁶⁻⁸ Moreover, revascularization is not always an option in frail elderly patients. In these patients, conservative treatment is a possible approach.⁹⁻¹¹ However, objective clinical outcome measures of conservative treatment are poor.

Correspondence: Lijckle van der Laan
Amphia Hospital, Molengracht 21, Breda,
CK 4818, the Netherlands
Tel +31 76 595 5000
Email lvanderlaan@amphia.nl

Lately, primary end points of treatment for CLTI have changed from clinical outcome, such as bypass patency and survival, to patient-reported outcome measures, most prominently QoL and health status (HS). Some research has been carried out on the long-term changes of these patient-reported outcome measures.^{12,13} Still, there is little scientific understanding of the long-term changes of QoL and HS after the treatment of elderly CLTI patients.^{13,14}

Poorer QoL and HS over time can be associated with patient characteristics.¹⁵ The course of a measured variable over time, such as QoL and HS, is called a trajectory. Latent class trajectory analysis is used to measure the relationship between distinctive trajectories and socio-demographic and clinical variables. In elderly CLTI patients, it is unclear which of these variables can influence the course of QoL and HS. Intermittent claudication (IC) is also a peripheral arterial disease and sometimes a precursor of CLTI. In IC patients, we know that poorer HS is associated with younger age, female sex, cardiac disease, worsening ankle-brachial index and not having a partner.^{17–20} To our knowledge, no studies have focused on the course of elderly CLTI patients' QoL or HS after treatment. In elderly CLTI patients, we expect high age, tissue loss (eg Rutherford 5/6) and comorbidities to result in poorer QoL and HS. Insight in variables, that can influence the QoL and HS trajectories of elderly CLTI patients, gives health-care providers the opportunity to monitor specific patients more carefully. As a result of insufficient information concerning these trajectories, health-care providers are restricted in making evidence-based decisions.

The primary goal of the present study was to provide long-term QoL and HS results for elderly CLTI patients after primary therapy: endovascular revascularization, surgical revascularization, or conservative treatment. The QoL and HS scores of this study's elderly sample were compared to the normal scores in the general elderly population. The second goal was to identify within the entire CLTI patient group distinctive trajectories of QoL and HS, followed by an assessment of the clinical and sociodemographic variables associated with each trajectory.

Patients and Methods

In this prospective observational cohort study, elderly CLTI patients were included between January 2012 and February 2016 in two hospitals.¹¹ Inclusion criteria were diagnosis with CLTI and an age of 70 years or older. Because of the use of questionnaires, patients with a lack

of Dutch language skills and cognitive impairment were excluded. Patients treated for, or with, a recent diagnosis of malignancy and patients undergoing primary major lower extremity amputation were also excluded. A formal written consent for ethical approval was not required according to the criteria of the Central Committee on Research Involving Human Subjects. The institutional review board (AMOA) approved this study due to its observational nature.¹¹ This study was conducted in accordance with the Declaration of Helsinki.

After careful consideration of standard diagnostics (eg duplex ultrasound, computed tomographic angiography, and/or magnetic resonance angiography) in the outpatient clinic and The Transatlantic Inter-Society Consensus (TASC II) classification, a panel of experts recommended each patient a particular treatment in a weekly multidisciplinary vascular conference.¹¹ The recommendation of treatment was based on current clinical practice in addition to the patient's condition. As reported previously,¹¹ the treatment options were endovascular revascularization, surgical revascularization, or conservative therapy (local wound care, antibiotics, and analgesics with or without minor amputation).

At patient inclusion, sociodemographic and several clinical characteristics were obtained from each patient. Sociodemographic characteristics included age, sex, marital status, educational level and level of independence (eg independent, home with help, nursing home or care facility). Clinical characteristics were Rutherford classification, current smoking, and chronic comorbidities (renal impairment, diabetes mellitus, cardiac disease). During a period of 24 months, follow-up measurements were performed at five to seven days, six weeks, six months, 12 months, and 24 months after the initial therapy. At baseline and at each follow-up moment, patients completed the WHOQOL-BREF questionnaire to determine QoL and the 12-Item Short Form Health Survey (SF-12) to measure HS.^{16,17} HS questionnaires evaluate perceived physical, psychological, and social functioning. They assess patients' daily activities and only provide an objective assessment of functioning, provided by the patients' themselves.^{18–21} QoL questionnaires are a subjective appraisal of physical, psychological, and social functioning. Hence, QoL concerns patients' satisfaction with functioning.²² The treatment course (eg treatment, complications of treatment, time in hospital, time of amputation, time of death, etc) was also duly noted during follow-up.

Statistical Analysis

Latent class trajectory analysis is a statistical method for identifying unobservable (eg latent) subgroups within a population based on the population's pattern of answers on categorical and continuous observed variables. With latent class trajectory analysis, a prediction model why patients fall into certain subgroups can be created. Latent class trajectory analysis was used to classify patients into distinctive subgroups, each showing a unique QoL or HS trajectory over the two-year follow-up.²³ Latent class trajectory analyses were performed separately for the following outcomes: overall QoL, physical QoL, physiological QoL, physical HS, and psychological HS. For each outcome, models varying from one to eight distinctive trajectory classes (eg similar scoring pattern on the measured variable) were estimated. The relative fit measures Akaike's Information Criterion (AIC), Bayesian Information Criterion (BIC), and AIC3 were used to define the optimal number of classes.²⁴ If there was any inconsistency in the conclusions provided by these fit measures, we chose the number of classes that showed the best fit according to AIC3, as this fit measure was shown to perform best in selecting the optimal number of classes.²⁵ After the best fitting model was selected, the associations between latent trajectory class membership and the clinical and sociodemographic covariates could be determined using a multinomial logistic regression analysis. Missing values in the outcome variables were directly handled in the latent class model through full information maximum likelihood estimation. Latent gold 5.0 was used both to fit the latent class models and to predict class membership based on the multinomial logistic regression.²⁶

The computerized software package IBM SPSS 23.0 performed all other statistical analyses. Shapiro–Wilk test was used to assess normality of continuous data. Gaussian-shaped distributions were expressed as mean and standard deviation. Non-normally distributed continuous data were expressed as median and interquartile range. The change of QoL within treatment group was analyzed by linear mixed modelling. Within mixed modeling, custom hypothesis tests were used to assess differences between the follow-up measurements. One-sample t tests were used to compare the mean QoL and HS estimates to corresponding estimates in the general elderly population. A *p*-value below 0.05 (two-sided) indicated a statistically significant result.

Results

Between January 2012 and February 2016, 195 patients were included in this study and 192 patients were excluded from this study. There were 187 exclusions due to cognitive impairment or refusal to participate; five patients were excluded based on primary amputation.¹¹ Included patients were divided into three treatment groups.¹¹ Patients were treated with endovascular revascularization (n=82), surgical revascularization (n=67), or they received conservative therapy (n=46).

Patient Characteristics

The baseline characteristics are presented in Table 1. Of the 195 patients, 56% were male and 33% had a Rutherford

Table 1 Baseline Characteristics

	Total n=195 (100)
Gender	
Male	110 (56)
Female	85 (44)
Age	
Median age (IQR)	80 (75, 84)
Rutherford class	
Category 4	64 (33)
Category 5/6	131 (67)
Comorbidity	
Pulmonary	108 (55)
Cardiac	134 (69)
Neurological	63 (32)
Arthritis	58 (30)
Vascular risk factors	
Hypertension	130 (57)
Diabetes mellitus	94 (48)
Renal impairment	111 (57)
Currently smoking	45 (23)
Preoperative risk scores	
ASA score 2	53 (27)
ASA score 3	124 (64)
ASA score 4	18 (9)
V-POSSUM score	
Median morbidity (IQR)	55 (35, 73)
Median mortality (IQR)	15 (8, 25)
Primary Treatment	
Surgical revascularization	67 (34)
Endovascular revascularization	82 (42)
Conservative treatment	46 (24)

Note: Data are presented as number of patients and (%), unless otherwise specified.

classification of 4. The median age was 80 years old. Patients selected for surgical treatment were significantly younger ($p=0.001$) and had less comorbidity compared to patients selected for endovascular revascularization and conservative therapy. Patients who received conservative therapy had significantly higher preoperative risk scores (ASA-score).¹¹ The baseline characteristics for the treatment groups separately of this study were previously published by Steunenberget al.¹¹ The flow chart (Figure 1) provides an overview of the clinical course of the patients included in our study. The overall two-year mortality was 42.1%. At the two-year follow-up measurement point, 97 patients were eligible for outcome determination. For 31 patients out of the initial cohort of 195 patients, there was no follow-up data available for QoL and HS questionnaires because of loss to follow-up (mostly due to inability to

complete the questionnaires). Yet, the medical follow-up data was available for all patients.

Long-term Outcome Quality of Life

Figure 2 presents the QoL of patients after one and two years of follow-up. The one-year results were previously published by Steunenberget al.²⁷ The overall QoL scores were significantly improved at the two-year follow-up measurement when compared to the baseline measurement in the surgically treated group and in the group receiving conservative treatment (respectively, 3.7 vs 3.0, 95%CI: 0.34–0.83, $p<0.001$ and. 3.3 vs 3.1, 95%CI: 0.00–0.78, $p=0.049$).

After two years, physical QoL had a significantly higher score than the baseline measurement in all treatment groups: endovascular treatment (13.7 vs 10.9, 95%CI: 1.74–3.63,

Clinical Interventions in Aging downloaded from https://www.dovepress.com/ by 86.93.153.107 on 30-Jan-2021
For personal use only.

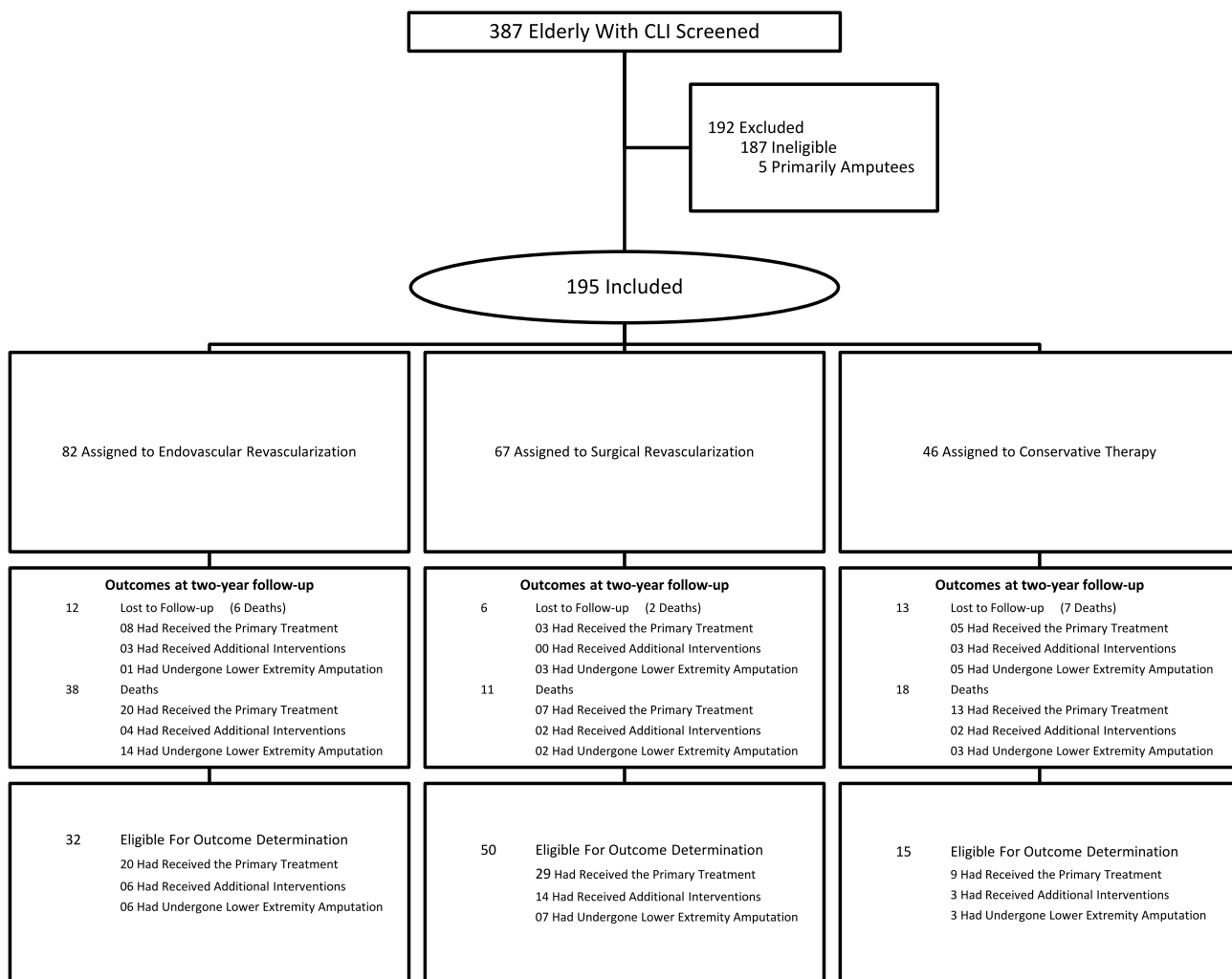


Figure 1 Screened and Included Patients.

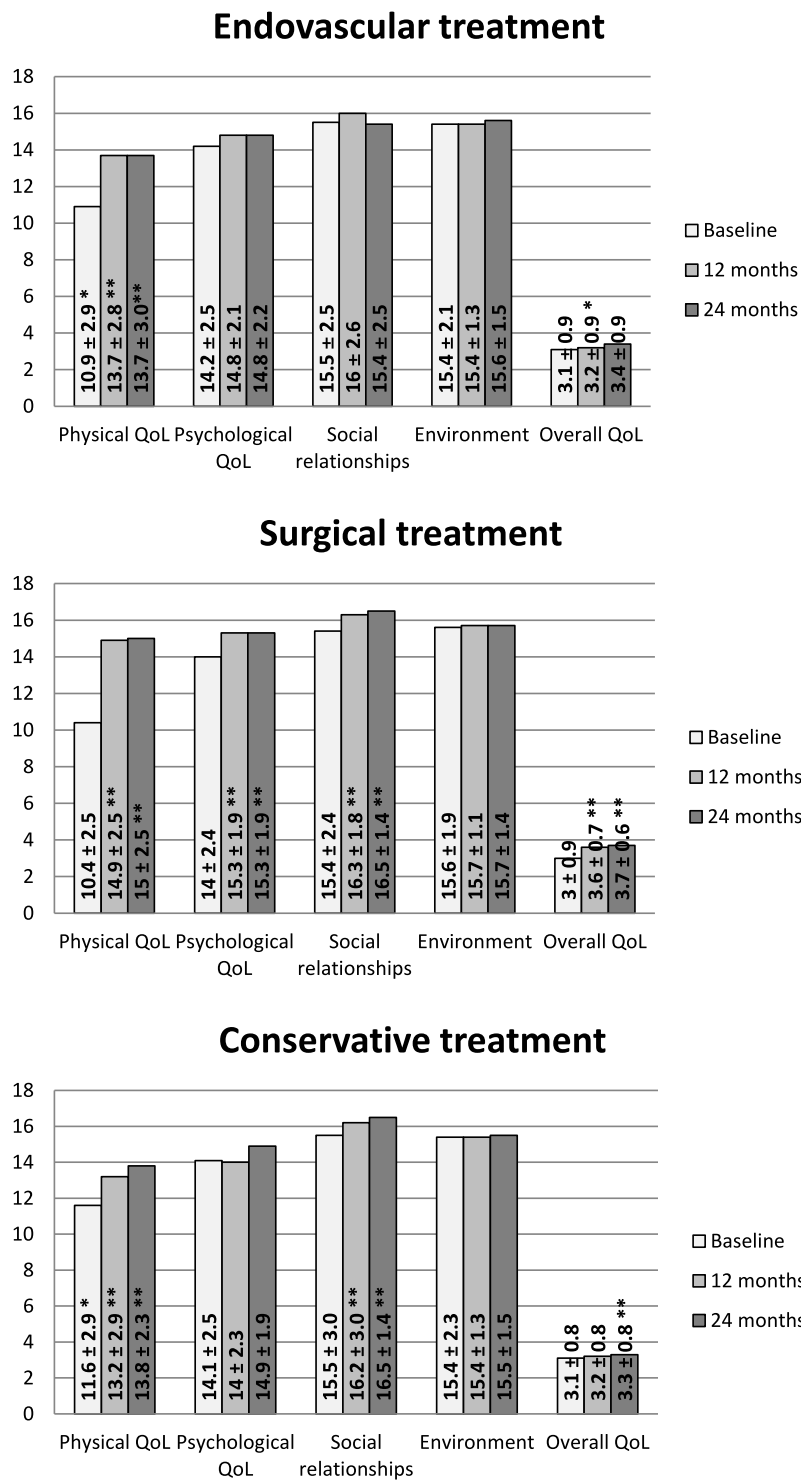


Figure 2 Quality of Life. Data is presented as mean and standard deviation. *Significant difference between the treatment group and the surgical treatment group ($p < 0.05$). **Significant difference in the treatment group between this measurement and baseline ($p < 0.05$).

$p < 0.001$), surgical treatment (15.0 vs 10.4, 95%CI: 3.64–5.28, $p < 0.001$), and conservative treatment (13.8 vs 11.6, 95%CI: 1.14–3.88, $p < 0.001$). However, the psychological QoL only showed significant improvement in the surgically treated group at two-year follow-up (15.3 vs 14.0, 95%CI:

0.68–1.89, $p < 0.001$). Moreover, there were also no statistically significant differences between the treatment groups for all QoL measurements at two-year follow-up.

In Table 2, the mean QoL scores at baseline and two-year follow-up are compared to the mean estimated normal scores

Table 2 WHOQOL-BREF Compared to Normal Values for Elderly

	n	Mean Estimate	Mean Estimate in the General Elderly Population	Mean Difference	95%CI	p-value
Baseline QoL domains						
Overall			3.90			
Total cohort	193	3.086		-0.815	-0.936; -0.693	<0.001
Endovascular group	81	3.105		-0.795	-0.992; -0.598	<0.001
Surgery group	67	3.045		-0.855	-1.067; -0.643	<0.001
Conservative group	45	3.111		-0.789	-1.024; -0.554	<0.001
Physical			14.869			
Total cohort	192	10.903		-3.966	-4.362; -3.570	<0.001
Endovascular group	81	10.899		-3.970	-4.604; -3.337	<0.001
Surgery group	65	10.422		-4.447	-5.074; -3.819	<0.001
Conservative group	46	11.589		-3.280	-4.137; -2.422	<0.001
Psychological			14.871			
Total cohort	195	14.088		-0.783	-1.129; -0.437	<0.001
Endovascular group	82	14.175		-0.696	-1.239; -0.154	0.012
Surgery group	67	13.967		-0.904	-1.498; -0.310	0.003
Conservative group	46	14.109		-0.762	-1.501; -0.023	0.43
Social relationship			15.251			
Total cohort	191	15.467		0.218	-0.1498; 0.586	0.244
Endovascular group	80	15.500		0.249	-0.312; 0.810	0.380
Surgery group	65	15.426		0.174	-0.416; 0.764	0.557
Conservative group	46	15.478		0.227	-0.656; 1.109	0.006
Environment			15.573			
Total cohort	188	15.479		-0.093	-0.386; 0.200	0.531
Endovascular group	79	15.443		-0.130	-0.590; 0.331	0.577
Surgery group	63	15.564		-0.009	-0.478; 0.459	0.969
Conservative group	46	15.427		-0.146	-0.816; 0.524	0.664
QoL domains at two-year follow-up						
Overall			3.90			
Total cohort	87	3.512		-0.388	-0.545; -0.231	<0.001
Endovascular group	28	3.375		-0.525	-0.865; -0.185	0.004
Surgery group	43	3.651		-0.249	-0.422; -0.076	0.006
Conservative group	13	3.346		-0.554	-1.038; -0.070	0.028
Physical			14.869			
Total cohort	84	14.364		-0.505	1.094; 0.084	0.092
Endovascular group	28	13.704		-1.165	-2.341; 0.011	0.052
Surgery group	43	14.950		0.081	-0.698; 0.860	0.834
Conservative group	13	13.846		-1.023	-2.419; 0.374	0.137
Psychological			14.871			
Total cohort	84	15.071		0.200	-0.226; 0.627	0.353
Endovascular group	28	14.810		-0.062	-0.904; 0.781	0.882
Surgery group	43	15.302		0.431	-0.144; 1.006	0.138
Conservative group	13	14.872		0.001	-1.131; 1.133	0.999
Social relationship			15.251			
Total cohort	83	16.137		0.885	0.466; 1.305	<0.001
Endovascular group	28	15.405		0.153	-0.830; 1.137	0.751
Surgery group	42	16.508		1.277	0.810; 1.703	<0.001

(Continued)

Clinical Interventions in Aging downloaded from https://www.dovepress.com/ by 86.93.153.107 on 30-Jan-2021
For personal use only.

Table 2 (Continued).

	n	Mean Estimate	Mean Estimate in the General Elderly Population	Mean Difference	95%CI	p-value
Conservative group Environment	13	16.513	15.573	1.261	0.437; 2.086	0.006
Total cohort	84	15.643		0.070	-0.240; 0.380	0.653
Endovascular group	28	15.571		-0.001	-0.576; 0.574	0.997
Surgery group	43	15.721		0.148	-0.286; 0.583	0.494
Conservative group	13	15.539		-0.034	-0.919; 0.851	0.934

Notes: Data presented as mean; a p-value of <0.05 represents a significant difference between the mean value of the general elderly population and the value in this cohort (indicated with bold front). The value of the general elderly population is based on reference 28.

in the elderly population.²⁸ At baseline, physical QoL and psychological QoL were significantly lower than the normal values of elderly. There was no significant difference between physical QoL, psychological QoL or environmental two-year results and the corresponding normal values for elderly for all treatment groups. The overall QoL score was significantly lower in comparison with normal value for elderly at baseline and at two-year follow-up. The two-year social relationships score was significantly higher in comparison with normal value for elderly.

Health Status

HS after one-year and two-year follow-up is presented in [Figure 3](#). After two years, physical HS (SF-12) significantly improved compared to the one-year follow-up measurement (37.3 vs 28.0, 95%CI: 2.75–7.25, $p<0.001$) and to the baseline measurement (42.5 vs 28.0, 95%CI: 10.48–16.58, $p<0.001$) in the surgical revascularization group. The physical HS (SF-12) significantly improved compared to the baseline measurement in the endovascular group (37.4 vs 28.9, 95%CI: 2.53–9.46, $p=0.001$). For all treatment groups, the mental HS scores were significantly better than the baseline measurement. The mental HS scores were also improved in comparison with the one-year follow-up measurement: endovascular treatment (46.8 vs 42.5, 95%CI: 1.90–7.63, $p=0.001$), surgical treatment (51.5 vs 43.9, 95%CI: 4.53–9.38, $p<0.001$), and conservative treatment (45.8 vs 39.5, 95%CI: 1.05–9.62, $p=0.009$).

The scores of the physical and mental domains of the SF-12 questionnaire were compared to the mean estimated normal scores in the elderly population ([Table 3](#)).²⁹ At baseline, both domains of the SF-12 were significantly impaired in the elderly CLTI population of this study. After two years, only surgically treated patients had physical HS scores corresponding with the scores of their peers.

Trajectories

The number of latent trajectory classes was found to be four for the QoL domains and five for the HS domains based on the lowest AIC3-value ([Supplement Table A](#)). Trajectories of the QoL domains are presented in [Figure 4](#) and trajectories of the HS domains are presented in [Figure 5](#). In [Supplement Tables B1](#) and [B2](#), an overview of the associations between the latent trajectory classes and the socio-demographic and clinical characteristics is provided for the overall, physical and psychological domains of QoL and the physical and mental domains of HS. Because of the large number of tested associations, a Bonferroni correction was applied resulting in an adjusted significance level of 0.05/14 predictors=0.0035. Overall, there were no overlapping risk factors for poorer QoL and/or HS in this patient population.

Discussion

Although QoL and HS are discussed for CLTI patients in current literature,^{11–13,30–32} there is a paucity of information about long-term QoL and HS outcomes in elderly CLTI patients. In our study, there is a persistent gain in QoL and HS for the surgically treated patients after two years. For all treatment groups, the physical QoL is significantly better compared to the baseline measurement in the long-term. Concerning physical HS, both surgically and endovascular treated patients improve significantly on this domain of the SF-12. Interestingly, conservatively treated patients do not show any improvements on their physical HS scores during two years of follow-up. More importantly, physical QoL did not differ from the corresponding normal values for patients in all treatment groups after two-years of follow-up.²⁸ But then again, the overall QoL score was significantly lower in comparison with normal value for elderly after two years of follow-up.

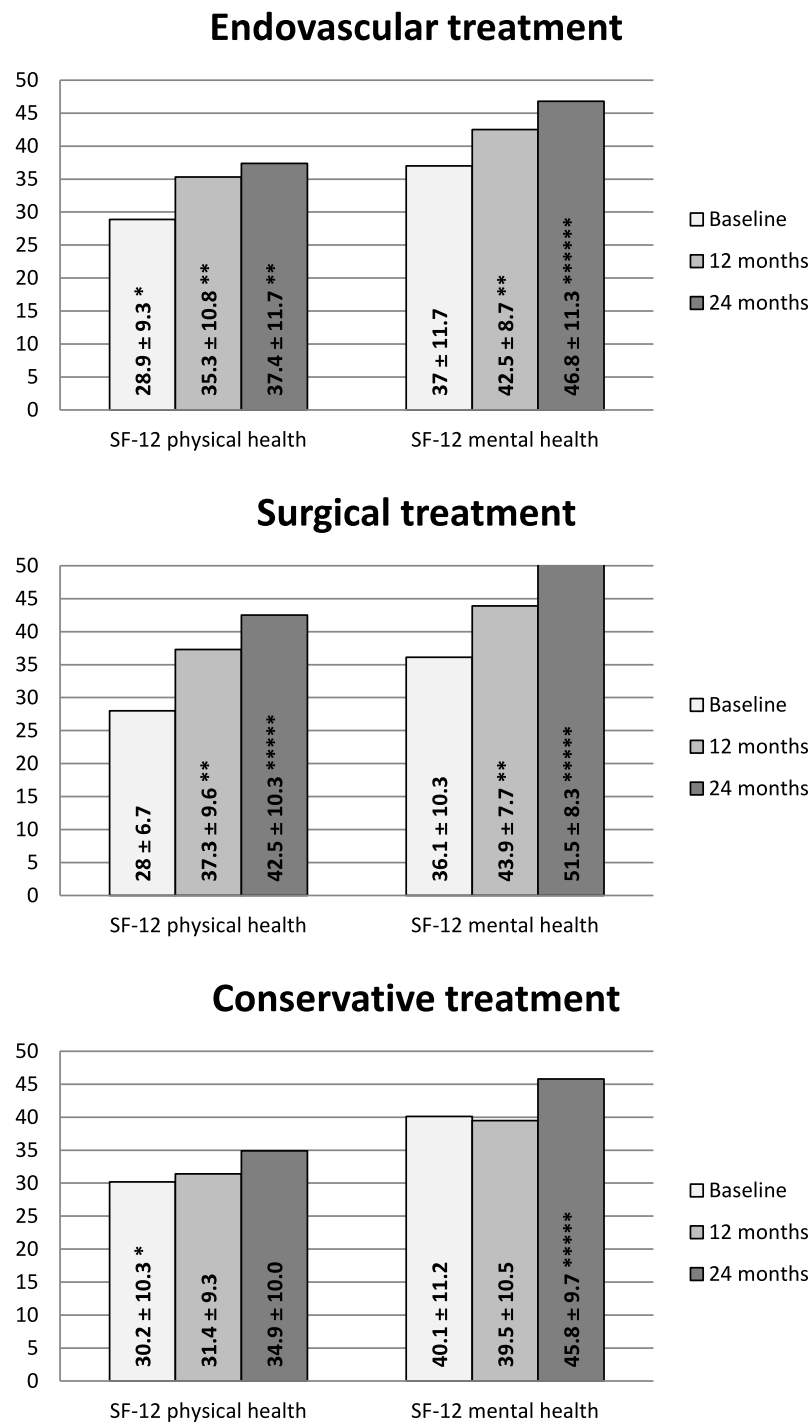


Figure 3 Health status (SF-12). Data is presented as mean and standard deviation. *Significant difference between the treatment group and the surgical treatment group ($p < 0.05$). **Significant difference in the treatment group between this measurement and baseline ($p < 0.05$). ***Significant difference in the treatment group between this measurement and the 12-month measurement ($p < 0.05$).

Our results are only partly in line with previous studies conducted with CLTI patients. The BASIL trial stated that both endovascular and surgical revascularization led to an improved long-term QoL.¹² In our study, the surgically treated rose in QoL scores and endovascular treated

patients only gained in physical QoL. A possible explanation for this might be that patients were included in our study despite comorbidities or type of anatomic lesion. Due to the latter, patients could only be randomized in the BASIL trial if patients were suited for open or

Table 3 HS Compared to Normal Values for Elderly

	n	Value	Value of General Elderly Population	Mean Difference	p-value	95%CI
Baseline HS domains						
Physical						
Total cohort	190	28.87	44.22	-15.35	<0.001	-16.596; -14.097
Endovascular group	78	28.88		-15.34	<0.001	-17.427; 13.256
Surgery group	66	27.98		-16.24	<0.001	-17.880; -14.608
Conservative group	46	30.15		-14.07	<0.001	-17.140; -10.999
Mental						
Total cohort	190	37.44	47.71	-4.58	<0.001	11.863; -8.670
Endovascular group	78	36.98		-10.73	<0.001	-13.376; -8.090
Surgery group	66	36.13		-11.57	<0.001	-14.103; -9.054
Conservative group	46	40.12		-7.59	<0.001	-10.914; -4.272
HS domains at two-year follow-up						
Physical						
Total cohort	84	39.64	44.22	-10.27	<0.001	-6.984; 2.186
Endovascular group	28	37.39		-6.83	0.005	-11.381; -2.275
Surgery group	43	42.53		-1.69	0.287	-4.854; 1.474
Conservative group	13	34.89		-9.33	0.005	-15.345; -3.312
Mental						
Total cohort	84	49.07	47.71	1.36	0.209	-0.774; 3.490
Endovascular group	28	46.78		-0.93	0.667	-5.320; 3.457
Surgery group	43	51.54		3.83	0.004	1.289; 6.376
Conservative group	13	45.81		-1.90	0.496	-7.778; 3.984

Notes: Data presented as mean; a p-value of <0.05 represents a significant difference between the mean value of the general elderly population and the value in this cohort (indicated with bold front). The value of the general elderly population is based on reference 29.

endovascular revascularization. Thus, only half of the elderly patients with infra-inguinal lesions could be included in the BASIL trial. Similar to our study, a significant difference in QoL between the two groups could not be detected.^{12,33} Still, it remains uncertain whether the BASIL trial's QoL results reflect the underlying QoL. It can be argued that the disease-specific VasuQol questionnaire does not represent QoL. The measurement of physical function in the VasuQol questionnaire represents an "objective" assessment of performing activities instead of the patient's perception of his overall functioning.³⁴ Therefore, the VasuQol questionnaire is an objective assessment of functioning eg HS.⁴ In addition, the differentiating power in CLTI patients is deficient and therefore it may not be applicable to the CLTI patient group.³⁵

Van Hattem et al indicated that HS deteriorates after peripheral bypass surgery in the long-term (mean follow-up 11 years).¹³ There is a lack of other studies on the long-term HS of CLTI patients. In our study, surgically and endovascular treated patients show a significant improvement of physical and mental HS after two years of follow-up.

Patients who received conservative treatment do not show any deterioration in the physical and mental HS domains during two years of follow-up. This study indicated that surviving patients do not experience worse HS two years after the start of any treatment.

An understanding of the profile of elderly CLTI patients to identify patients with factors that could impair QoL and HS was lacking. In the latent class analysis, patients with the lowest and highest QoL and HS trajectories could be identified. The findings of this prospective observational cohort study may help us recognize elderly CLTI patients that may need a careful reconsideration of the intended treatment. Consequently, a tailored approach in the management of CLTI can be facilitated when there is insight into the variables that make a patient prone to better or worse QoL or HS outcomes. With respect to shared decision making, these distinctive variables will provide a very important facet in personalized medicine.

In patients with IC, prior reports have focussed on factors that might influence the course of HS. Poorer HS

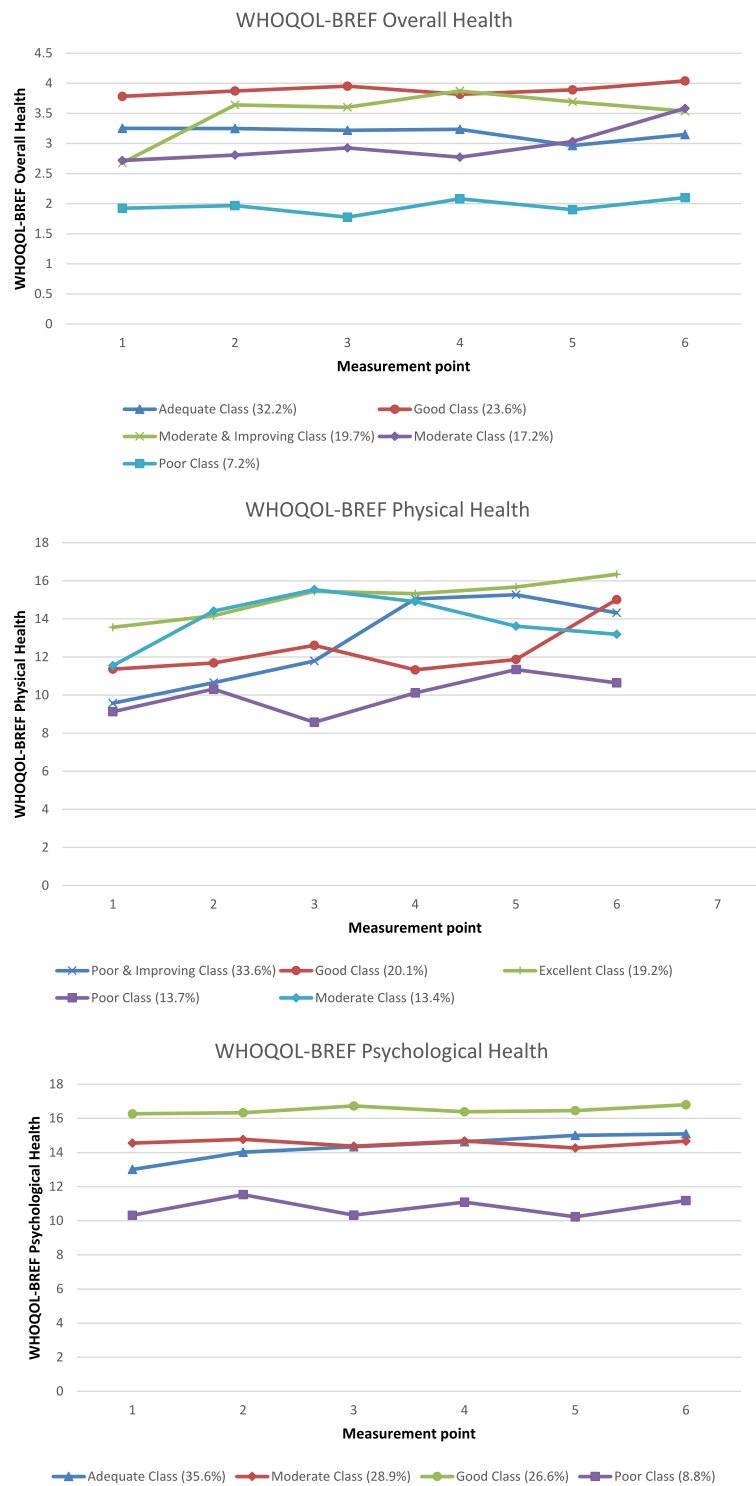


Figure 4 Quality of Life Trajectories.

in these patients was associated with younger age, female sex, the presence of cardiac disease, worsening ankle-brachial index and not having a partner.^{15,36–38} However, these results do not apply to the elderly CLTI patients in this study. No sociodemographic or

clinical variables significantly influenced the lowest QoL and HS trajectories.

Our study has limitations. Firstly, in this observational study, patients were not randomized to treatment. Thereby, this study suffers from selection bias. Nevertheless, a selection

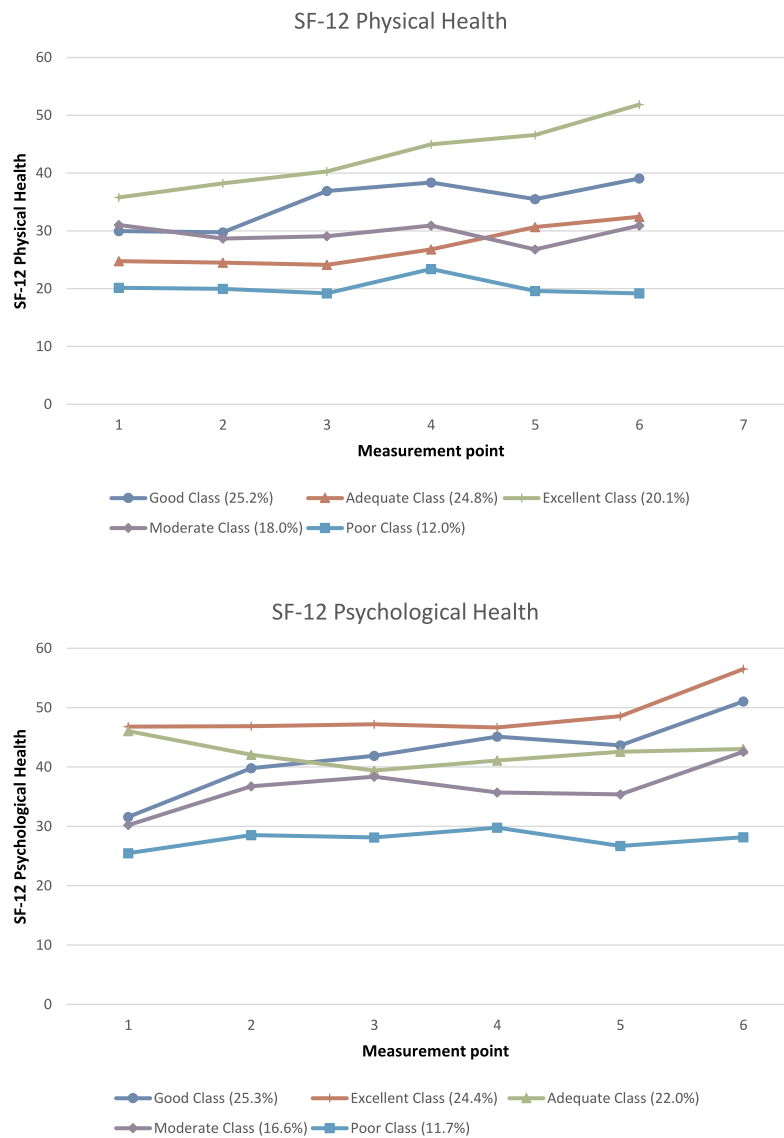


Figure 5 Health Status Trajectories.

bias even exists when CLTI patients are randomized to treatment. Not all patients are suitable for both surgical and endovascular revascularization. Moreover, some patients cannot undergo either of these treatments. So in this study, the treatment selection after counselling in a multidisciplinary vascular conference resembles current clinical practice. Secondly, in this study questionnaires were conducted. In survey research a non-response bias is always present. The main reason for loss to follow-up was incapability of completing questionnaires during follow-up. Still, response rates were high when compared to the BASIL trial and PREVENT trial. At two years follow-up 84.1% patients alive completed the questionnaires. In the BASIL trial, the response rate was 70%.¹² Response rate was similar in the PREVENT trial; 62.5% at one-year follow-

up.³⁹ Thirdly, patients with primary amputations were excluded due to the low number of patients (n=5). Therefore, this study was underpowered to examine the clinical outcome of patients with a primary amputation. Future research will examine QoL and HS of primarily amputated CLTI patients. In addition, due to of the small number of surviving patients, this study did not differentiate between patients with ischemic rest pain and patients with ischemic ulcers or wounds. Previously published data of this study shows that patients with ischemic ulcers or wounds were significantly less treated with conservative treatment compared to revascularization.¹¹ In future research, a differentiation should be made between patients with ischemic rest pain and patients with ischemic ulcers or wounds.

Currently, long-term outcome in elderly CLTI patients are lacking.⁴⁰ This study shows that physical and psychological QoL levels in surviving elderly CLTI patients do not differ from the corresponding normal values of elderly people. Moreover, physical QoL increases after revascularization and conservative treatment after two years of follow-up. Physical HS only improves in revascularized patients. This was also the first study to evaluate the trajectory of elderly CLTI patients' QoL or HS after treatment. Interestingly, no sociodemographic or clinical variables significantly influenced the lowest QoL and HS trajectories. It is hoped that this study encourages further analysis of the influence of biopsychosocial characteristics on QoL and HS in elderly CLTI patients in order to achieve personalized medicine and aid the shared decision making process.

Acknowledgments

N. Verbogt, Department of Surgery, Amphia Hospital, Breda, The Netherlands for data collection

Disclosure

The authors report no conflicts of interest in this work.

References

- Farber A, Eberhardt RT. The current state of critical limb ischemia a systematic review. *JAMA Surg.* 2016;151(11):1070–1077. doi:10.1001/jamasurg.2016.2018
- Becker F, Robert-Ebadi H, Ricco J-B, et al. Chapter I: definitions, epidemiology, clinical presentation and prognosis. *Eur J Vasc Endovasc Surg.* 2011;42(S3):S4–12. doi:10.1016/S1078-5884(11)60009-9
- Conte MS, Bradbury AW, Kolh P, et al. Global vascular guidelines on the management of chronic limb-threatening ischemia. *Eur J Vasc Endovasc Surg.* 2019;58(1):S1–S109.e33. doi:10.1016/j.ejvs.2019.05.006
- Breek JC, De Vries J, Van Heck GL, Van Berge Henegouwen DP, Hamming JF. Assessment of disease impact in patients with intermittent claudication: discrepancy between health status and quality of life. *J Vasc Surg.* 2005;41(3):443–450. doi:10.1016/j.jvs.2004.12.042
- Dua A, Lee CJ. Epidemiology of peripheral arterial disease and critical limb ischemia. *Tech Vasc Interv Radiol.* 2016;19(2):91–95. doi:10.1053/j.tvir.2016.04.001
- Reinecke H, Unrath M, Freisinger E, et al. Peripheral arterial disease and critical limb ischaemia: still poor outcomes and lack of guideline adherence. *Eur Heart J.* 2015;36:932–938. doi:10.1093/eurheartj/ehv006
- Teraa M, Conte MS, Moll FL, Verhaar MC. Critical limb ischemia: current trends and future directions. *J Am Heart Assoc.* 2016;5(2):1–9. doi:10.1161/JAHA.115.002938
- Norgren L, Hiatt WR, Dormandy JA, Nehler MR, Harris KA, Fowkes FGR. Inter-society consensus for the management of peripheral arterial disease (TASC II). *J Vasc Surg.* 2007;45(1):5–67. doi:10.1016/j.jvs.2006.12.037
- de Leur K, van Zeeland MLP, Ho GH, De Groot HGW, Veen EJ, van der Laan L. Treatment for critical lower limb ischemia in elderly patients. *World J Surg.* 2012;36(12):2937–2943. doi:10.1007/s00268-012-1758-y
- Thomas AR, Raats JW, Lensvelt MMA, de Groot HGW, Veen EJ, van der Laan L. Conservative treatment in selected patients with severe critical limb ischemia. *World J Surg.* 2015;39:2090–2095. doi:10.1007/s00268-015-3069-6
- Steunenberg S, de Vries J, Raats JW, et al. Quality of life and mortality after endovascular, surgical or conservative treatment of elderly suffering from critical limb ischemia. *Ann Vasc Surg.* 2018;51:95–105. doi:10.1016/j.avsg.2018.02.044
- Forbes JF, Adam DJ, Bell J, et al. Bypass versus Angioplasty in Severe Ischaemia of the Leg (BASIL) trial: health-related quality of life outcomes, resource utilization, and cost-effectiveness analysis. *J Vasc Surg.* 2010;51(10S):43S–51S. doi:10.1016/j.jvs.2010.01.076
- van Hattum ES, Tangelder MJD, Lawson JA, Moll FL, Algra A. The quality of life in patients after peripheral bypass surgery deteriorates at long-term follow-up. *J Vasc Surg.* 2009;53(3):643–650. doi:10.1016/j.jvs.2010.09.021
- Donker JMW, De VJ, Ho GH, et al. Review: quality of life in lower limb peripheral vascular surgery. *Vascular.* 2016;24(1):88–95. doi:10.1177/1708538115578961
- Noyes AM, Abbott JD, Gosch K, et al. Association between health status and sociodemographic, clinical and treatment disparities in the Patient-centered Outcomes Related to Treatment Practices in Peripheral Arterial Disease: investigating Trajectories (PORTRAIT) registry. *Vasc Med.* 2018;23(1):32–38.
- Nelson CB, Lotfy M, O'Connell KA, Group W. The World Health Organization's WHOQOL-BREF quality of life assessment: psychometric properties and results of the international field trial. A report from the WHOQOL group. *Qual Life Res.* 2004;13(2):199–310.
- Ware JE, Kosinski M, Keller SD. A 12-item short-form health survey: construction of scales and preliminary tests of reliability and validity. *Med Care.* 2005;14(1):151–160.
- Vogel TR, Petroski GF, Kruse RL. Functional status of elderly adults before and after interventions for critical limb ischemia. *J Vasc Surg.* 2014;59(2):350–358. doi:10.1016/j.jvs.2013.08.087
- Cieri E, Lenti M, De Rango P, Isernia G, Marucchini A, Cao P. Functional ability in patients with critical limb ischaemia is unaffected by successful revascularisation. *Eur J Vasc Endovasc Surg.* 2011;41(2):256–263. doi:10.1016/j.ejvs.2010.10.014
- Muldoon MF, Barger SD, Flory JD, Manuck SB. What are quality of life measurements measuring? *BMJ.* 1998;316:542–545. doi:10.1136/bmj.316.7130.542
- Frans FA, Met R, Koelemay MJW, et al. Changes in functional status after treatment of critical limb ischemia. *J Vasc Surg.* 2013;58(4):957–965. doi:10.1016/j.jvs.2013.04.034
- Saxena S, Orley J. Quality of life assessment: the World Health Organization perspective. *Eur Psychiatry.* 1997;12(Suppl3):263s–266s. doi:10.1016/S0924-9338(97)89095-5
- Jones BL, Nagin DS, Roeder K. A SAS procedure based on mixture models for estimating developmental trajectories. *Sociol Methods Res.* 2001;29(3):374–393. doi:10.1177/0049124101029003005
- Vermunt JK, Magidson J. *Technical Guide for Latent GOLD 5.0: Basic, Advanced, and Syntax.* Belmont, MA: Statistical Innovations Inc; 2013.
- Andrews RL, Currim IS. A comparison of segment retention criteria for finite mixture logit models. *J Mark Res.* 2003;40(2):235–243. doi:10.1509/jmkr.40.2.235.19225
- Vermunt JK, Magidson J. *Latent GOLD 5.0. Upgrade Manual.* Belmont, MA: Statistical Innovations Inc; 2013.
- Steunenberg SL, de Vries J, Raats JW, et al. Quality of life and traditional outcome results at 1 year in elderly patients having critical limb ischemia and the role of conservative treatment. *Vasc Endovascular Surg.* 2020;54(2):126–134. doi:10.1177/1538574419885478
- de Vries J Beyond health status: construction and validation of the Dutch WHO Quality of Life assessment instrument. Ph.D. Thesis. Tilburg: Tilburg University; 1996.

29. Mols F, Pelle AJ, Kupper N. Normative data of the SF-12 health survey with validation using postmyocardial infarction patients in the Dutch population. *Qual Life Res.* 2009;18:403–414. doi:10.1007/s11136-009-9455-5
30. Hernandez-Osma E, Cairols MA, Marti X, Barjau E, Riera S. Impact of treatment on the quality of life in patients with critical limb ischaemia. *Eur J Vasc Endovasc Surg.* 2002;23:491–494. doi:10.1053/ejvs.2002.1644
31. Landry GJ, Esmonde NO, Lewis JR, et al. Objective measurement of lower extremity function and quality of life after surgical revascularization for critical lower extremity ischemia. *J Vasc Surg.* 2014;60(1):136–142. doi:10.1016/j.jvs.2014.01.067
32. Engelhardt M, Bruijnen H, Scharmer C, Wohlgemuth WA, Willy C, Wolffe KD. Prospective 2-years follow-up quality of life study after infrageniculate bypass surgery for limb salvage: lasting improvements only in non-diabetic patients. *Eur J Vasc Endovasc Surg.* 2008;36:63–70. doi:10.1016/j.ejvs.2008.01.026
33. Adam DJ, Beard JD, Cleveland T, et al. Bypass versus angioplasty in severe ischaemia of the leg (BASIL): multicentre, randomised controlled trial. *Lancet.* 2005;366(9501):1925–1934.
34. Conijn AP, Santema TB, Bipat S, Koelemay MJW, de Haan RJ. Clinimetric evaluation of the vascular quality of life questionnaire in patients with lower limb ischaemia. *Eur J Vasc Endovasc Surg.* 2017;53(3):412–418. doi:10.1016/j.ejvs.2016.12.015
35. Suckow BD, Goodney PP, Nolan BW, et al. Domains that determine quality of life in vascular amputees. *Ann Vasc Surg.* 2015;29(4):722–730. doi:10.1016/j.avsg.2014.12.005
36. Smolderen KG, Pelle AJ, Kupper N, Mols F, Denollet J. Impact of peripheral arterial disease on health status: A comparison with chronic heart failure. *J Vasc Surg.* 2009;50(6):1391–1398. doi:10.1016/j.jvs.2009.07.109
37. Wu A, Coresh J, Selvin E, et al. Lower extremity peripheral artery disease and quality of life among older individuals in the community. *J Am Heart Assoc.* 2017;6(1):e004519. doi:10.1161/JAHA.116.004519
38. Roumia M, Aronow HD, Soukas P, et al. Sex differences in disease-specific health status measures in patients with symptomatic peripheral artery disease: data from the PORTRAIT study. *Vasc Med.* 2017;22(2):103–109. doi:10.1177/1358863X16686408
39. Nguyen LL, Moneta GL, Conte MS, Bandyk DF, Clowes AW, Seely BL. Prospective multicenter study of quality of life before and after lower extremity vein bypass in 1404 patients with critical limb ischemia. *J Vasc Surg.* 2006;44(5):977–984. doi:10.1016/j.jvs.2006.07.015
40. Klaphake S, de Leur K, Mulder PGH, et al. Mortality after major amputation in elderly patients with critical limb ischemia. *Clin Interv Aging.* 2017;12:1985–1992. doi:10.2147/CIA.S137570

Clinical Interventions in Aging

Dovepress

Publish your work in this journal

Clinical Interventions in Aging is an international, peer-reviewed journal focusing on evidence-based reports on the value or lack thereof of treatments intended to prevent or delay the onset of maladaptive correlates of aging in human beings. This journal is indexed on PubMed Central, MedLine, CAS, Scopus and the Elsevier

Bibliographic databases. The manuscript management system is completely online and includes a very quick and fair peer-review system, which is all easy to use. Visit <http://www.dovepress.com/testimonials.php> to read real quotes from published authors.

Submit your manuscript here: <https://www.dovepress.com/clinical-interventions-in-aging-journal>