

Tilburg University

Long-term impact of endometrial cancer diagnosis and treatment on health-related quality of life and cancer survivorship

de Boer, Stephanie M.; Nout, Remi A.; Jurgenliemk-Schulz, Ina M.; Jobsen, Jan J.; Lutgens, Ludy C. H. W.; van der Steen-Banasik, Elzbieta M.; Mens, Jan Willem M.; Slot, Annerie; Kroese, Marika C. Stenfert; Oerlemans, Simone; Putter, Hein; Verhoeven-Adema, Karen W.; Nijman, Hans W.; Creutzberg, Carien L.

Published in:

International Journal of Radiation Oncology Biology Physics

DOI:

[10.1016/j.ijrobp.2015.08.023](https://doi.org/10.1016/j.ijrobp.2015.08.023)

Publication date:

2015

Document Version

Publisher's PDF, also known as Version of record

[Link to publication in Tilburg University Research Portal](#)

Citation for published version (APA):

de Boer, S. M., Nout, R. A., Jurgenliemk-Schulz, I. M., Jobsen, J. J., Lutgens, L. C. H. W., van der Steen-Banasik, E. M., Mens, J. W. M., Slot, A., Kroese, M. C. S., Oerlemans, S., Putter, H., Verhoeven-Adema, K. W., Nijman, H. W., & Creutzberg, C. L. (2015). Long-term impact of endometrial cancer diagnosis and treatment on health-related quality of life and cancer survivorship: Results from the randomized PORTEC-2 trial. *International Journal of Radiation Oncology Biology Physics*, 93(4), 797-809. <https://doi.org/10.1016/j.ijrobp.2015.08.023>

General rights

Copyright and moral rights for the publications made accessible in the public portal are retained by the authors and/or other copyright owners and it is a condition of accessing publications that users recognise and abide by the legal requirements associated with these rights.

- Users may download and print one copy of any publication from the public portal for the purpose of private study or research.
- You may not further distribute the material or use it for any profit-making activity or commercial gain
- You may freely distribute the URL identifying the publication in the public portal

Take down policy

If you believe that this document breaches copyright please contact us providing details, and we will remove access to the work immediately and investigate your claim.

Clinical Investigation

Long-Term Impact of Endometrial Cancer Diagnosis and Treatment on Health-Related Quality of Life and Cancer Survivorship: Results From the Randomized PORTEC-2 Trial



Stephanie M. de Boer, MD,* Remi A. Nout, MD, PhD,*
Ina M. Jürgenliemk-Schulz, MD, PhD,[†] Jan J. Jobsen, MD, PhD,[‡]
Ludy C.H.W. Lutgens, MD, PhD,[§]
Elzbieta M. van der Steen-Banasik, MD,^{||} Jan Willem M. Mens, MD,[¶]
Annerie Slot, MD,[#] Marika C. Stenfert Kroese, MD,**
Simone Oerlemans, PhD,^{††,‡‡} Hein Putter, MD, PhD,^{§§}
Karen W. Verhoeven-Adema, PhD,^{|||} Hans W. Nijman, MD, PhD,^{¶¶}
and Carien L. Creutzberg, MD, PhD*

*Department of Radiation Oncology, Leiden University Medical Center, Leiden, The Netherlands;
[†]Department of Radiation Oncology, University Medical Center Utrecht, Utrecht, The Netherlands;
[‡]Department of Radiotherapy, Medisch Spectrum Twente, Enschede, The Netherlands; [§]Department of Radiation Oncology (MAASTRO), University Medical Centre Maastricht, The Netherlands; ^{||}Arnhem Radiotherapy Institute (ARTI), Arnhem, The Netherlands; [¶]Department of Radiation Oncology, Erasmus MC-Daniel den Hoed Cancer Center, Rotterdam, The Netherlands; [#]Radiotherapy Institute Friesland, Leeuwarden, The Netherlands; **Department of Radiation Oncology, Radiotherapy Group Deventer, Deventer, The Netherlands; ^{††}Research Department, Netherlands Comprehensive Cancer Organization, Eindhoven, The Netherlands; ^{‡‡}Center of Research on Psychology in Somatic Diseases, Tilburg University, Tilburg, The Netherlands; ^{§§}Department of Medical Statistics, Leiden University Medical Center, Leiden, The Netherlands; ^{|||}Comprehensive Cancer Center The Netherlands-West, Leiden, The Netherlands; and ^{¶¶}Department of Gynecologic Oncology, University Medical Center Groningen, Groningen, The Netherlands

Received Jun 12, 2015, and in revised form Jul 16, 2015. Accepted for publication Aug 7, 2015.

Reprint requests to: Stephanie M. de Boer, MD, Department of Radiation Oncology, Leiden University Medical Center, K1-P, Albinusdreef 2, P.O. Box 9600, 2300 RC Leiden, The Netherlands. Tel: (+31) 71-526-5120; E-mail: s.m.de_boer.ONCO@lumc.nl

Presented in part at the 34th Annual Meeting of the European Society for Radiotherapy and Oncology, April 24-28, 2015, Barcelona, Spain.

The PORTEC-2 study was supported by a grant from the Dutch Cancer Society (CKVO 2001-04).

Conflict of interest: none.

Supplementary material for this article can be found at www.redjournal.org.

Acknowledgment—The authors thank the radiation oncologists, gynecologists, and data managers at the participating centers.

Summary

In the PORTEC-2 trial, 427 patients with stage I high–intermediate-risk endometrial cancer were randomized to external beam radiation therapy (EBRT) or vaginal brachytherapy. In this 7- and 10-year health-related quality of life analysis, patients treated with EBRT reported a persisting higher rate of bowel symptoms with impact on daily activities, and a trend for more urinary symptoms, without impact on overall quality of life or differences in cancer survivorship issues.

Purpose: To evaluate the long-term health-related quality of life (HRQL) after external beam radiation therapy (EBRT) or vaginal brachytherapy (VBT) among PORTEC-2 trial patients, evaluate long-term bowel and bladder symptoms, and assess the impact of cancer on these endometrial cancer (EC) survivors.

Patients and Methods: In the PORTEC-2 trial, 427 patients with stage I high–intermediate-risk EC were randomly allocated to EBRT or VBT. The 7- and 10-year HRQL questionnaires consisted of EORTC QLQ-C30; subscales for bowel and bladder symptoms; the Impact of Cancer Questionnaire; and 14 questions on comorbidities, walking aids, and incontinence pads. Analysis was done using linear mixed models for subscales and (ordinal) logistic regression with random effects for single items. A two-sided P value $<.01$ was considered statistically significant.

Results: Longitudinal HRQL analysis showed persisting higher rates of bowel symptoms with EBRT, without significant differences in global health or any of the functioning scales. At 7 years, clinically relevant fecal leakage was reported by 10.6% in the EBRT group, versus 1.8% for VBT ($P=.03$), diarrhea by 8.4% versus 0.9% ($P=.04$), limitations due to bowel symptoms by 10.5% versus 1.8% ($P=.001$), and bowel urgency by 23.3% versus 6.6% ($P<.001$). Urinary urgency was reported by 39.3% of EBRT patients, 25.5% for VBT, $P=.05$. No difference in sexual activity was seen between treatment arms. Long-term impact of cancer scores was higher among the patients who had an EC recurrence or second cancer.

Conclusions: More than 7 years after treatment, EBRT patients reported more bowel symptoms with impact on daily activities, and a trend for more urinary symptoms, without impact on overall quality of life or difference in cancer survivorship issues. © 2015 Elsevier Inc. All rights reserved.

Introduction

Randomized trials have shown that pelvic external beam radiation therapy (EBRT) significantly reduced locoregional relapse compared with observation after surgery, but without survival benefit, and at the cost of mainly gastrointestinal adverse events (1–5). The Post Operative Radiation Therapy in Endometrial Carcinoma (PORTEC)-2 trial showed that vaginal brachytherapy (VBT) was highly effective as compared with EBRT, with 2% vaginal recurrence at 5 years in both arms, and similar rates of locoregional relapse and overall survival (6). Health-related quality of life (HRQL) analysis among PORTEC-2 trial patients at 5 years showed that women treated with VBT reported significantly fewer bowel symptoms, without limitations in daily activities, and higher social functioning scores than those who underwent EBRT. Symptom ratings of VBT patients remained similar to that of an age-matched normal population. Sexual functioning scores were lower in both groups compared with the age-matched population (7). On the basis of these results VBT became the standard adjuvant treatment for patients with high–intermediate-risk endometrial cancer (EC).

Analysis of long-term HRQL in the previous PORTEC-1 trial, in which patients were randomized to EBRT or observation after surgery, showed that even after 10 to 15 years, bowel symptoms were still more frequent among patients who underwent EBRT. Urinary symptoms had become more frequent over time in both groups, but more

clearly so among EBRT patients, with a significantly increased use of incontinence pads (“day and night usage” 42.9% vs 15.2% and “never use” 39% vs 60% for EBRT vs VBT, $P<.001$) (4, 8). For radiation therapy–related toxicity it is known that the bladder is a late-responding organ (9, 10).

Little is known about the long-term impact of diagnosis and treatment on survivors of EC. The Impact Of Cancer (IOC) scale is a questionnaire measuring the positive and negative impact of cancer experience among long-term survivors (11). Translation and validation of the IOC for use in The Netherlands have been reported (12). The IOC version 2 (IOCv2) had similar impact domains in the Dutch sample, providing evidence that IOCv2 measured common and important survivor concerns across two different Western nations.

The present analysis was done to evaluate long-term HRQL after EBRT or VBT among PORTEC-2 trial patients, evaluate long-term bowel and bladder symptoms, and assess the impact of cancer on these EC survivors.

Patients and Methods

Patient selection and study design of the PORTEC-2 trial

Between 2002 and 2006, 427 patients with stage I high–intermediate-risk EC who participated in the PORTEC-2

trial were randomized to EBRT or VBT. Details on patient selection, treatment, and HRQL have been described in previous publications (6, 13). Baseline questionnaires and at least 1 follow-up questionnaire were received from 348 of 427 patients (81% of responders). Almost all patients had multiple follow-up questionnaires (7). For the present analysis, patients were considered eligible if they were previous responders and were alive and disease-free according to the trial database.

HRQL assessment

Cancer-specific general HRQL was measured with the EORTC (European Organization for Research and Treatment of Cancer) Core questionnaire (QLQ-C30 v3.0) (14). Because the EC-specific EN24 module (14) was not yet available, subscales from EORTC modules were combined into a bowel, bladder, and sexual symptom module (15, 16). Likert-type response scales were used with a 4-point response scale, except for items 29 and 30 of the EORTC QLQ-C30 (7-point scale). All subscales and item responses were converted to 0 to 100 scales.

Higher scores for functioning items and global quality of life scale represent a better level of functioning. For the symptom items, a higher score reflects a higher level of symptoms.

The HRQL questionnaire had been sent to the trial patients at 6-months intervals in the first 2 years and annually until 5 years. The 7- and 10-year questionnaires were supplemented with the IOCv2 and 14 extra questions on general health, comorbidities, and use of (walking) aids and incontinence pads.

The most recent scaling of the IOC questionnaire yielded the 37-item IOCv2, divided into 4 positive subscales and 4 negative subscales (17). Respondents indicated their level of agreement from 1 (strongly disagree) to 5 (strongly agree). The PORTEC-1 trial patients had completed the IOCv1, which has 7 items less than IOCv2. An algorithm by Crespi et al (18) was used to impute these missing IOCv2 items for the PORTEC-1 patients for comparison. In view of overlapping questions, the IOCv1 question “ongoing cancer-related or treatment-related symptoms interfere with my life” was not asked. Therefore, the subscale “life interferences” was not computed. As a

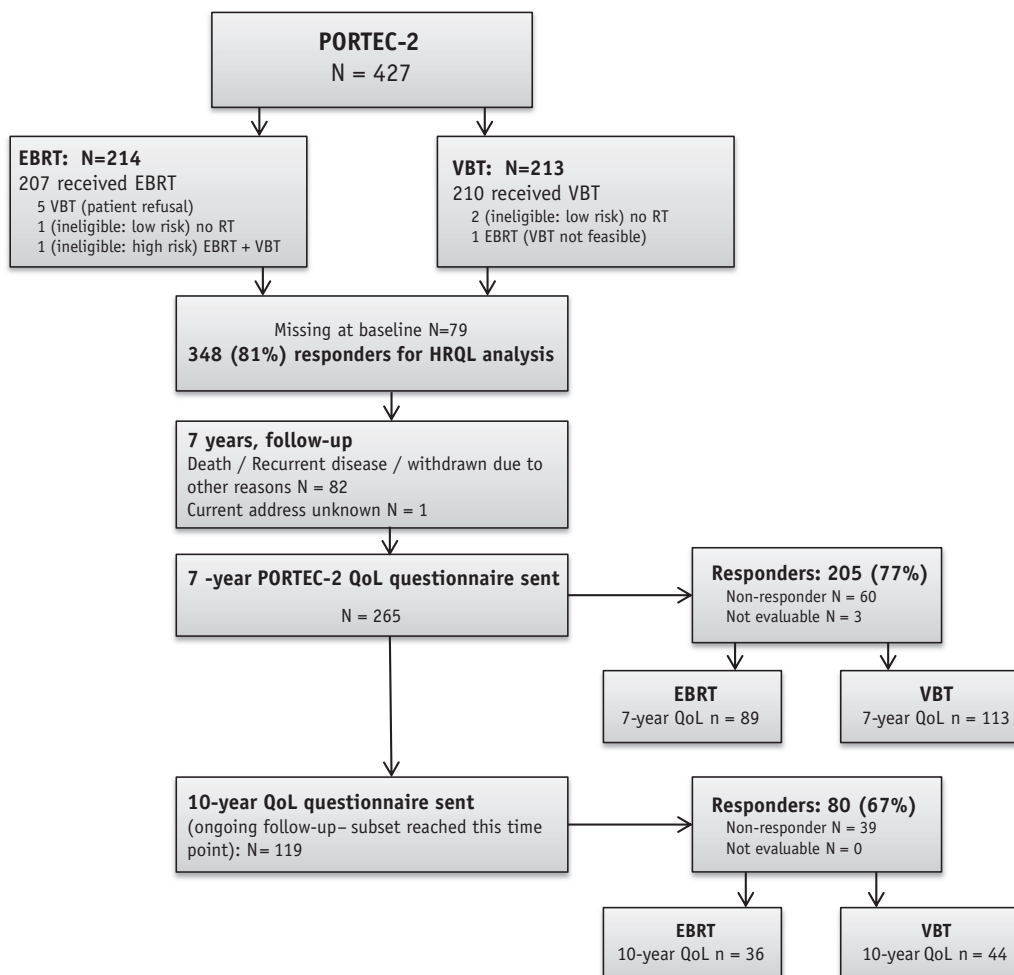


Fig. 1. CONSORT diagram.

consequence, the overall scale “negative impact domains” consisted of 3 instead of 4 subscales.

Statistical methods

All statistical analyses were performed with SPSS version 20.0. The χ^2 test or Fisher exact test for categorical variables and *t* test for continuous variables were used to compare patient and tumor characteristics and to compare mean scores of symptoms at single time points ($P < .05$ considered significant). Because of ongoing follow up, the 10-year results were only used for longitudinal analysis.

Analysis of HRQL was done according to EORTC Quality of Life Group guidelines. Baseline scores were compared with a *t* test, or Armitage trend test for single items. To obtain estimates of the EORTC QLQ-C30 and subscales at each of the fixed time points, a linear mixed model was used with patient as random effect and time (categorical), random assignment, and their interaction as fixed effects. Single items were analyzed using (ordinal) logistic regression with random effects. Differences in HRQL between the two treatment groups were tested by the Wald test in the linear or ordinal logistic mixed model (*P* random assignment), which excluded the baseline value.

The same test was applied to analyze significant changes of QOL scores over time (*P*-time), and score changes over time were compared between treatment groups (*P*-time by random assignment), which included the baseline value. To guard against false-positive results because of multiple testing, a 2-sided *P* value $\leq .01$ was considered statistically significant.

Guidelines on the interpretation of clinically relevant changes of EORTC QLQ-C30 scores were applied (19, 20). Scales not included in the guideline were evaluated according to Osoba et al (21), who reported that patients valued a change of 5 to 10 as “little,” 10-20 as “moderate,” and more than 20 as “very much” difference.

The IOC scores were compared with a *t* test. Analysis of covariance was done to evaluate whether patient-related factors influenced scores between PORTEC-1 and PORTEC-2 patients.

Results

HRQL population and compliance

Questionnaires were sent to 265 eligible patients with correct current address at the time points 7 years and

Table 1 Patient characteristics of patients at 7 years compared with all PORTEC-2 patients

Characteristic	Responders and evaluable at 7 years (n=202)					All patients PORTEC-2 (n=427)				
	EBRT (n=89)		VBT (n=113)		<i>P</i> *	EBRT (n=214)		VBT (n=213)		<i>P</i> †
	n	%	n	%		n	%	n	%	
Age at randomization (y)										
Mean	67.1		68.1		.28	69.3		69.8		.001
Range	51-84		46-85			51-89		46-85		
<60	6	6.7	4	3.5		8	3.7	8	3.8	
≥60	83	93.3	109	96.5		206	96.3	205	96.2	
FIGO stage (1988)‡					.94					.81
IB	5	5.6	6	5.3		19	8.9	16	7.5	
IC	77	86.5	98	86.7		172	80.4	171	80.3	
IIA	7	7.9	9	8.0		23	10.7	26	12.2	
Histologic grade					.55					.74
1	39	43.8	56	49.6		99	46.3	103	48.4	
2	45	50.6	50	44.2		97	44.1	94	44.1	
3	5	5.6	7	6.2		18	8.4	16	7.5	
WHO performance					.83					.32
0	64	71.9	87	77.0		157	73.4	141	66.5	
1	25	28.1	22	19.5		56	26.2	66	31.1	
>2	0	0.0	4	3.5		1	0.5	5	2.4	
Comorbidity										
IBS	1	1.1	0	0.0	.32	4	1.9	2	0.9	.23
Diabetes	6	6.7	16	14.2	.08	28	13.1	34	16.0	.19
Hypertension	32	36.0	40	35.4	.94	75	35.2	75	35.5	.95
Cardiovascular	16	18.2	20	17.7	.93	47	22.2	51	24.1	.13
Other	10	11.2	9	8.0	.43	33	15.4	33	15.6	.02

Abbreviations: EBRT = external beam radiation therapy; IBS = irritable bowel syndrome; PORTEC = Post Operative Radiation Therapy in Endometrial Carcinoma; VBT = vaginal brachytherapy; WHO = World Health Organization performance score.

* *P* value for comparison EBRT versus VBT of responders and evaluable at 7 years.

† *P* value for comparison responders and evaluable at 7 years (present analysis) versus the initial PORTEC-2 cohort.

‡ International Federation of Gynecology and Obstetrics 1988 staging criteria.

10 years from date of randomization. Response rate at 7 years was 205 of 265 (77%). Three patients only answered the comment page and were therefore not evaluable. One hundred nineteen patients had reached the 10-year time point, of whom 80 (67%) returned the questionnaire (Fig. 1).

Of the 282 evaluable questionnaires (202 7-year and 80 10-year questionnaires), 76.2% had completed all items of the QLQ-C30, with rates of completion for the bladder and bowel items of 90.8% and 93.97%, respectively, and 69.8% for sexuality items. Among the responders who indicated to be sexually active (n=45), 86.7% had completed the sexual symptom subscale.

In the “remarks” section, 7 patients (2 EBRT, 5 VBT, of whom 1 only at 10 years) noted having been diagnosed with a second cancer in the pelvic region or an EC recurrence. Because this was not yet known in the trial database, this information was verified and proved correct in all cases. A second cancer outside the pelvic region was reported by another 5 patients. To avoid analysis of symptoms that could have been caused by a second cancer or recurrence, patients with an EC recurrence or a second cancer in the pelvic region were excluded for longitudinal and symptom analysis. The patients with an EC recurrence

or a second malignancy (n=12) were analyzed separately for the IOC items.

General functioning

Table 1 shows the patient characteristics, both of the current participants and for the complete PORTEC-2 trial population. Responders at 7 years were slightly younger and had fewer comorbidities compared with the whole PORTEC-2 cohort; no other significant differences were found.

Scores on the QLQ-C30 functioning and global health scales did not significantly differ between the 2 treatment groups (Fig. 2, Table 2). Although the overall longitudinal analysis found higher social functioning scores in the VBT group (P=.04), these higher scores were observed in the first 2 years after treatment, and similar thereafter.

Sexual activity was reported by only 19.4% of the patients, sexual interest by 28.1%. No difference in sexual interest and sexual activity was seen between treatment arms. Among patients who were sexually active, 87% (n=20) of EBRT patients reported sex to be enjoyable, compared with 50% (n=15) of VBT patients (P=.001). Symptoms ratings of vaginal dryness, shortening, or pain were not significantly different between the treatment arms.

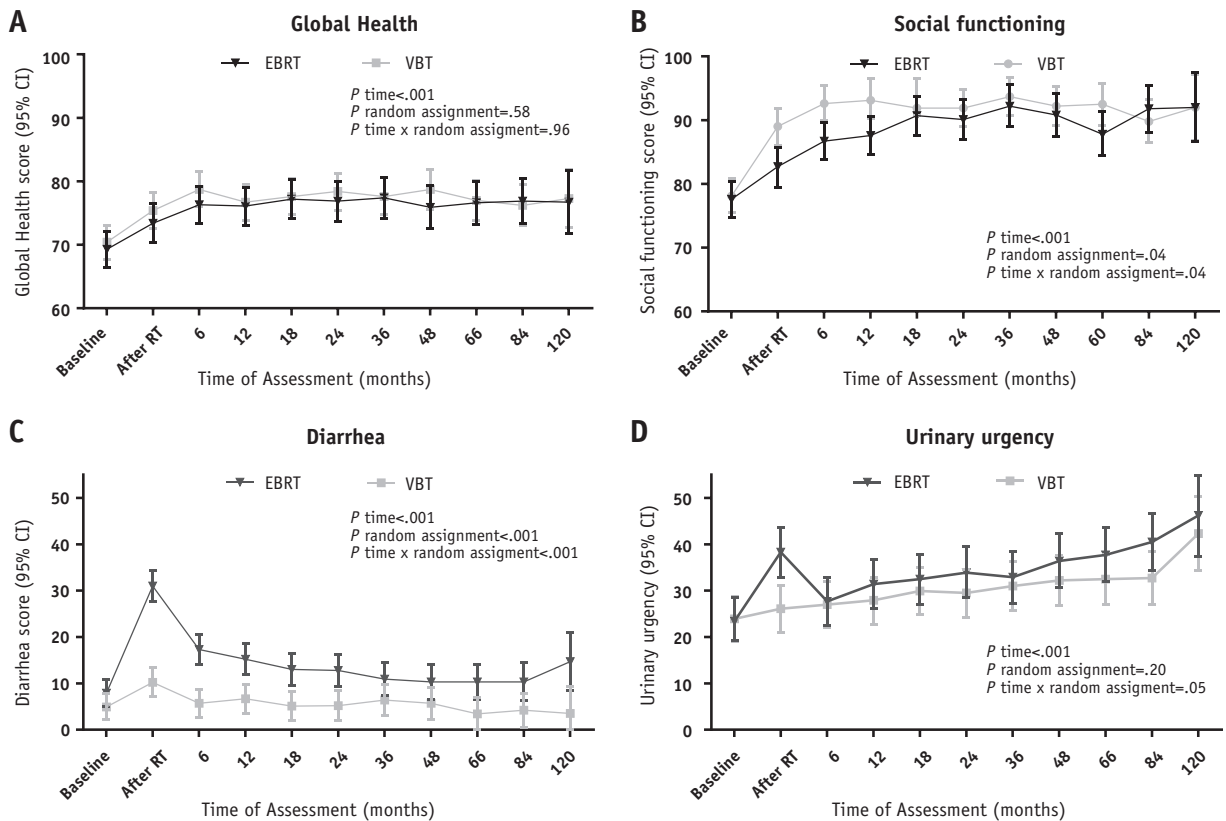


Fig. 2. Patient functioning subscales and single-item symptom scores on the European Organization for Research and Treatment of Cancer (EORTC) QLQ-C30 and prostate cancer questionnaire module (EORTC PR-25). For (A) (Global Health score) and (B) (Social functioning score), a higher score indicates a higher level of functioning or activity. For (C) (Diarrhea) and D (Urinary Urgency), a higher score indicates a higher level of symptoms. *Abbreviations:* EBRT = external beam radiation therapy; RT = radiation therapy; VBT = vaginal brachytherapy.

Table 2 Mean scores of QLQ-C30 functioning scales and symptom ratings by treatment arm

Parameter	Baseline	Questionnaire time points		<i>P</i>		
		84 mo	120 mo	Time	Randomization	Time × randomization
EORTC QLQ-C30						
Global health				<.001	.58	.96
EBRT	69.3	76.9	76.7			
VBT	70.4	76.2	77.3			
Functioning scales						
Social functioning				<.001	.04	.04
EBRT	77.6	91.8	92.0			
VBT	78.1	89.8	92.0			
Cognitive functioning				.35	.30	.60
EBRT	84.3	86.5	84.7			
VBT	86.7	85.5	86.7			
Emotional functioning				<.001	.33	.71
EBRT	75.6	82.9	83.7			
VBT	76.3	84.7	87.5			
Physical functioning				<.001	.34	.75
EBRT	72.0	74.9	68.4			
VBT	73.7	73.3	69.2			
Role functioning				<.001	.34	.15
EBRT	61.0	80.3	71.2			
VBT	59.1	76.9	77.5			
QLQ-C30 symptom scoring						
Fatigue				<.001	.14	.37
EBRT	34.8	25.6	25.0			
VBT	34.1	26.2	25.6			
Nausea and vomiting				<.001	.04	.34
EBRT	4.6	2.8	3.9			
VBT	5.0	2.4	3.7			
Pain				<.001	.33	.46
EBRT	18.5	14.2	22.1			
VBT	19.4	17.0	15.1			
Dyspnea				<.001	.53	.05
EBRT	13.0	18.6	21.8			
VBT	11.6	14.6	19.6			
Insomnia				.003	.17	.58
EBRT	27.4	20.2	29.6			
VBT	25.9	23.3	21.5			
Appetite loss				<.001	.03	.02
EBRT	13.7	8.6	8.8			
VBT	10.6	8.2	4.3			
Constipation				<.001	.56	.79
EBRT	13.4	8.3	5.7			
VBT	12.9	7.4	9.1			
Diarrhea				<.001	<.001	<.001
EBRT	7.9	10.3	14.7			
VBT	4.9	4.2	3.5			
Financial difficulties				.003	.85	.26
EBRT	2.0	2.3	2.0			
VBT	5.5	2.3	3.1			
Bowel symptoms (BS)						
Limitation of daily activities due to BS				<.001	<.001	.001
EBRT	9.0	12.7	14.1			
VBT	5.0	4.9	6.2			
Fecal leakage				<.001	<.001	.06
EBRT	4.0	12.1	13.4			
VBT	1.5	5.6	3.0			

(continued on next page)

Table 2 (continued)

Parameter	Baseline	Questionnaire time points		<i>P</i>		
		84 mo	120 mo	Time	Randomization	Time × randomization
Rectal blood loss				.08	.06	.51
EBRT	0.4	1.2	1.0			
VBT	0.2	1.1	0.1			
Bloated feeling				<.001	.16	.78
EBRT	15.8	16.0	11.2			
VBT	15.5	10.9	8.0			
Urinary symptoms (US)						
Frequency daytime				<.001	.16	.09
EBRT	33.2	35.0	43.4			
VBT	36.5	32.0	33.1			
Frequency at night				<.001	.21	.05
EBRT	31.5	36.3	46.4			
VBT	34.3	35.3	37.2			
Urinary urgency				<.001	.20	.05
EBRT	23.4	40.5	46.2			
VBT	23.9	32.7	42.3			
Sleep deprivation due to urinary frequency				.001	.10	.18
EBRT	15.3	18.9	25.8			
VBT	16.2	14.0	17.4			
Need to remain close to the toilet				<.001	.001	.004
EBRT	7.8	16.2	23.4			
VBT	7.0	10.2	12.8			
Incontinence for urine				<.001	.19	.24
EBRT	11.5	20.4	29.8			
VBT	10.6	20.8	25.5			
Dysuria				<.001	.91	.87
EBRT	5.3	3.9	2.2			
VBT	7.9	3.2	2.0			
Limitation daily activities due to US				<.001	.03	.25
EBRT	3.6	12.4	14.2			
VBT	3.0	7.3	7.3			
Sexual functioning and symptoms						
Sexual interest				<.001	.24	.26
EBRT	7.7	13.8	8.1			
VBT	4.9	8.1	2.2			
Sexual activity				<.001	.34	.82
EBRT	5.3	7.3	5.3			
VBT	2.8	6.4	0.0			
To what extent was sex enjoyable				.004	.30	<.001
EBRT	45.7	46.1	19.7			
VBT	20.0	25.1	43.5			
Vaginal dryness				.83	.66	.07
EBRT	30.9	29.6	25.3			
VBT	36.4	28.9	51.9			

Abbreviations as in Table 1.

P time: changes of quality-of-life scores over time. *P* randomization: difference in health-related quality of life between the 2 treatment groups. *P* time × randomization: quality-of-life score changes over time between the 2 treatment groups.

Mean scores of earlier time points have previously been reported by Nout et al (7).

Bowel and bladder symptoms

Longitudinal analysis throughout the 10-year HRQL follow-up period showed higher rates of diarrhea, fecal leakage, and limitations in daily activities due to bowel

symptoms in the EBRT group as compared with VBT (all $P < .001$; Table 2), similar to previous analyses (8). At 7 years, significant and clinically relevant differences between EBRT and VBT patients were found for all bowel symptoms except for rectal blood loss, flatulence, and

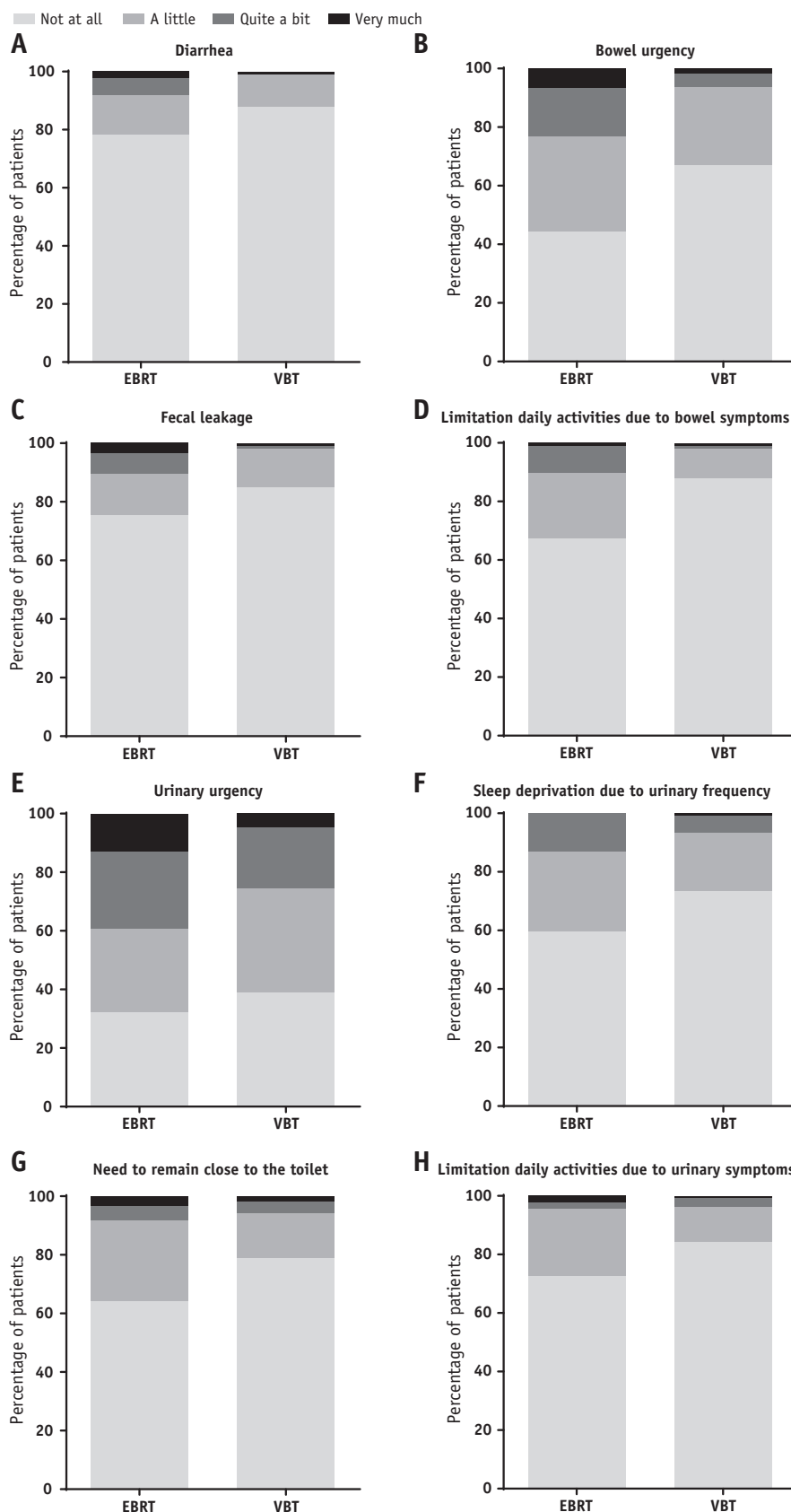


Fig. 3. Patient symptom scores at 7 years for (A) diarrhea, (B) bowel urgency, (C) fecal leakage, (D) limitation of daily activities due to bowel symptoms, (E) urinary urgency, (F) sleep deprivation due to urinary frequency, (G) need to remain close to the toilet, and (H) limitation of daily activities due to urinary symptoms.

Table 3 Single-item scores bowel, bladder, and sexual symptoms at 7 years (n = 196)*

Treatment	No. missing	No. of patients without symptoms	% of patients	No. of patients with mild symptoms*	% of patients	No. of patients with moderate/severe symptoms*	% of patients	t test mean scores
Bowel symptoms (BS)								
Diarrhea								.037
EBRT	5	65	78.3	11	13.3	7	8.4	
VBT	2	93	87.7	12	11.3	1	0.9	
Limitation of daily activities due to BS								.001
EBRT	2	58	67.4	19	22.1	9	10.5	
VBT	2	93	87.7	11	10.4	2	1.8	
Fecal leakage								.03
EBRT	3	64	75.3	12	14.1	9	10.6	
VBT	1	91	85	14	13.1	2	1.8	
Rectal blood loss								.83
EBRT	2	84	97.7	1	1.2	1	1.2	
VBT	2	103	97.2	3	2.8	0	0.0	
Bloated feeling								.04
EBRT	2	56	65.1	21	24.4	9	10.5	
VBT	2	81	76.4	21	19.8	4	3.8	
Bowel urgency								<.001
EBRT	2	38	44.2	28	32.6	20	23.3	
VBT	2	71	67	28	26.4	7	6.6	
Flatulence								.76
EBRT	3	36	42.4	31	36.5	18	21.2	
VBT	2	54	50.9	40	37.7	12	11.3	
Stomach/bowel cramps								.12
EBRT	2	63	73.3	18	20.9	5	5.9	
VBT	2	88	83.0	14	13.2	4	3.8	
Urinary symptoms (US)								
Frequency daytime								.58
EBRT	5	29	34.9	31	37.3	23	27.7	
VBT	2	40	37.7	41	38.7	25	23.6	
Frequency at night								.56
EBRT	3	20	23.5	40	47.1	25	29.4	
VBT	2	35	33.0	42	39.6	29	27.4	
Urinary urgency								.05
EBRT	4	27	32.1	24	28.6	33	39.3	
VBT	2	41	38.7	38	35.8	27	25.5	
Sleep deprivation due to urinary frequency								.06
EBRT	4	50	59.5	23	27.4	11	13.1	
VBT	3	77	73.3	21	20.0	7	6.7	
Need to remain close to the toilet								.07
EBRT	4	54	64.3	23	27.4	7	8.4	
VBT	4	82	78.8	16	15.4	6	5.7	
Incontinence for urine								.89
EBRT	4	48	57.1	26	31.0	10	11.9	
VBT	4	57	54.8	38	36.5	9	8.7	
Dysuria								.35
EBRT	4	76	90.5	5	6.0	3	3.6	
VBT	6	96	94.1	4	3.9	2	2.0	
Limitation of daily activities due to US								.11
EBRT	1	63	72.4	20	23.0	4	4.6	
VBT	1	90	84.1	13	12.1	4	3.7	
Difficulties emptying of the bladder								.19
EBRT	4	66	78.6	13	15.5	5	6.0	
VBT	4	89	85.6	12	11.5	3	2.9	
Sexual symptoms[†]								

(continued on next page)

Table 3 (continued)

Treatment	No. missing	No. of patients without symptoms	% of patients	No. of patients with mild symptoms*	% of patients	No. of patients with moderate/severe symptoms*	% of patients	<i>t</i> test mean scores
To what extent was sex enjoyable								.001
EBRT	65	3	13.0	8	34.8	12	52.2	
VBT	78	15	50.0	9	30.0	6	20.0	
Vaginal dryness								.763
EBRT	67	11	52.4	3	14.3	7	33.4	
VBT	78	18	60.0	4	13.3	8	26.7	
Short or narrow vagina								.190
EBRT	66	13	59.1	8	36.4	1	4.5	
VBT	79	16	55.2	7	24.1	6	20.6	
Pain during intercourse								.122
EBRT	66	17	77.3	4	18.2	1	4.5	
VBT	81	17	63.0	6	22.2	4	14.8	

Abbreviations as in Table 1. BS = bowel symptoms; US = urinary symptoms.

At 7 years there were 202 responders; 6 patients were excluded owing to endometrial cancer recurrence or second cancer in the pelvic region.

* Mild symptoms: response "a little"; moderate/severe symptoms: response "quite a bit" or "very much."

† Responses to these questions were only expected if the respondent indicated to be sexually active.

bowel cramps (Fig. 3, Table 3). Moderate or severe symptoms of fecal leakage were reported by 10.6% versus 1.8% of EBRT versus VBT patients ($P=.03$), and moderate or severe diarrhea by 8.4% versus 0.9% ($P=.037$). Limitations in daily activities due to bowel symptoms were reported by 10.5% versus 1.8% ($P=.001$) and bowel urgency by 23.3% versus 6.6% ($P<.001$).

No differences were found in use of incontinence pads for fecal soiling (10.6% vs 8.1% for EBRT vs VBT). Fifty percent of patients who reported limitations in daily functioning due to bowel symptoms or fecal leakage used incontinence pads.

Longitudinal analysis of 10-year HRQL follow-up for urinary symptoms showed increasing rates of urinary urgency and nocturnal frequency over time in both groups, but more so among EBRT patients ($P=.05$). Patients treated with EBRT reported higher rates of remaining close to the toilet because of urinary symptoms ($P=.001$; Table 2). Over time, increasing rates of urinary urgency were found, and at 7 years significantly more EBRT patients reported urinary urgency, a difference that was not seen in the 5-year HRQL analysis. Moderate or severe symptoms of urinary urgency were reported by 39.3% versus 25.5% (EBRT vs VBT, $P=.05$). Rates of sleep disturbance due to urinary frequency (13.1% vs 6.7%, $P=.06$) and the need to remain close to the toilet (8.4% vs 5.7%, $P=.07$) were slightly but nonsignificantly higher among EBRT patients (Fig. 3, Table 3).

Overall, 50% of patients reported use of incontinence pads, without differences between the groups (50.6% vs 50.9%). Use of incontinence pads was reported by 85.2% of patients with urinary incontinence and 87.2% of those with limitations in daily activities due to urinary symptoms.

IOC scores

All scales for the IOC questionnaire could be computed for 176 of 190 patients (92.6%). No differences in any of the subscales were seen between the 2 PORTEC-2 treatment arms. Comparison of PORTEC-2 IOC scores with PORTEC-1 scores showed that PORTEC-1 patients tended to have higher scores on every subscale and overall scales (Fig. 4 and Table E1 [available online at www.redjournal.org]). Analysis of covariance (adjusted for the presence of bone problems, having a partner, and age) showed that PORTEC-1 patients scored higher on the positive impact domain (3.03 vs 2.82, $P=.002$).

Differences in IOC scores were found between the 51 patients who had reported to have been diagnosed and treated for EC recurrence or second cancer (PORTEC-1 $n=39$, PORTEC-2 $n=12$), compared with the combined general PORTEC-1 and -2 patients. These patients had significantly higher scores on all IOC subscales, except for meaning of cancer (Fig. 4).

Discussion

This long-term analysis of HRQL in the PORTEC-2 trial shows that EBRT may have a long-lasting, clinically relevant, mostly bowel symptom-related negative impact on HRQL, with moderate or severe limitation of daily activities reported by 10% of the patients. Patients treated with EBRT reported significantly more diarrhea, fecal leakage, urgency, and limitations in daily activities due to bowel symptoms compared with VBT. At 7 years, for the first time significantly more urinary urgency was reported by patients treated with EBRT.

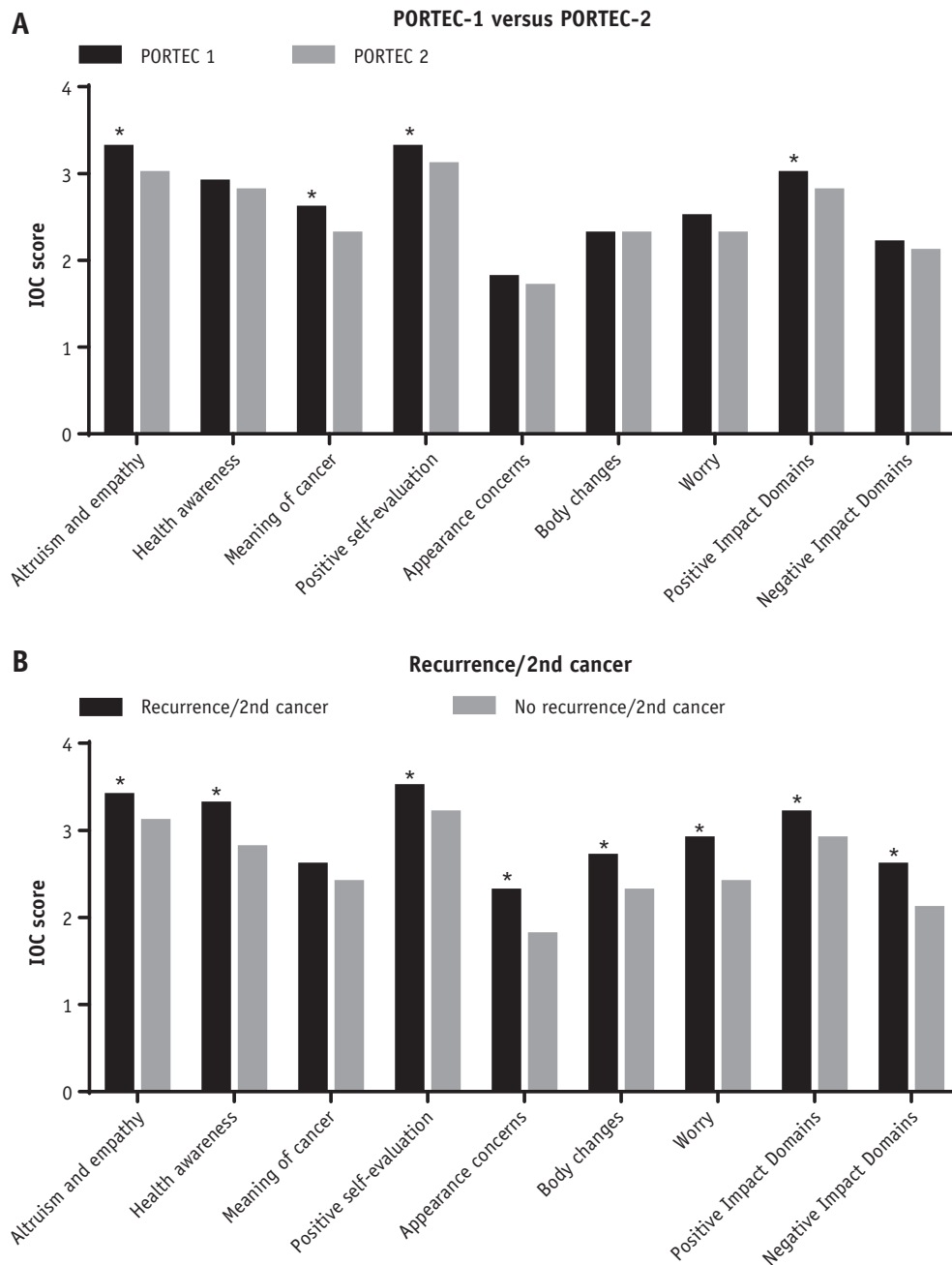


Fig. 4. Impact of cancer scores at 7 years of (A) patients treated in the Post Operative Radiation Therapy in Endometrial Carcinoma (PORTEC)-1 versus PORTEC-2 trial; and (B) patients in PORTEC-1 and PORTEC-2 with recurrence or a second cancer versus patients without recurrence or second cancer.

This is one of the few long-term analyses of patient-reported gastrointestinal and bladder symptoms after pelvic EBRT in a randomized trial, with the strengths of exclusion of biases due to the randomized comparison and the complete follow-up. Our results are consistent with the rates of gastrointestinal and bladder toxicity found in other studies (22-24). Although the differences in mean scores were small, 10% of patients reported to have moderate or severe limitations of daily activities, and this is clinically relevant (19, 20).

These patient-reported outcomes provide a complete picture of survivorship issues after treatment of EC, because agreement between patient- and physician-based scoring of toxicities is low, with significant underreporting of lower-grade toxicities that do impact daily life (25). Similar to the long-term quality-of-life analysis of the PORTEC-1 trial, we found that urinary symptoms with use of incontinence pads was not reported until more than 5 years after treatment, showing the combined effects of aging and EBRT on the bladder and pelvic floor. It is known

from previous studies that the bladder is a late-responding organ (8-10) and that pelvic floor dysfunction gradually develops over time.

General functioning and global health did not significantly differ between EBRT and VBT patients, suggesting that diagnosis and treatment of EC have a transient impact on patient functioning and that many patients adjust their lives to bothersome but manageable symptoms.

Sexual activity and interest were reported by only 19.3% and 28.1% of the patients at 7 years, without differences between EBRT and VBT. Patients treated with EBRT more often (87% vs 51%) reported sex to be enjoyable, whereas there were no differences in symptoms such as vaginal dryness or pain. The low activity rates together with the low completion rate of the sexual functioning questions are a limitation to these findings.

The challenge is to develop preventive and intervention measures that might reduce or prevent such long-lasting symptoms caused by EBRT. Andreyev et al (26) reported clinical improvement in bowel function with a structured, algorithm-driven approach. Pelvic floor muscle training programs for gynecologic cancer survivors with pelvic floor dysfunction showed improved results compared with no intervention (27, 28). It remains to be seen whether instruction on simple pelvic floor exercises for all patients will reduce symptoms and dysfunction over time.

Another possible limitation to this analysis is the inherent selection of responders at long-term analysis, because participants had to be alive and disease-free. Previous analyses had shown no differences in patient or tumor characteristics between responders and non-responders (7). The patients in the present analysis were slightly younger and had fewer comorbidities. With a mean age of the PORTEC-2 patients of 69 years, the older patients with more comorbidities were at higher risk to die of intercurrent disease compared with the younger patients. Another explanation could be that the older patients were not able to respond owing to other reasons, such as vision problems or cognitive disorders. With the high response rate of 77% at 7 years, however, these results are generally applicable.

No differences in IOC scores were seen between patients in the PORTEC-2 treatment arms. Comparison of PORTEC-1 and PORTEC-2 patients showed higher scores on positive impact scales among PORTEC-1 patients. Younger patients and those with a partner had higher scores on the positive impact domain scales, whereas patients with bone or joint problems scored higher on the negative impact scales. Oerlemans et al (12) reported in a study among non-Hodgkin lymphoma survivors fewer positive and more negative impacts of cancer in Dutch survivors compared with American non-Hodgkin lymphoma survivors. They suggested that IOC scores might be more dependent on cultural background than type of cancer. Age, length of follow-up, female gender, education level, relationship, and employment were factors of influence (12). In [Table E1](#) (available online at www.redjournal.org) an

overview of the IOC scores from these 4 different study groups is shown.

The higher IOC scores among patients who had been diagnosed with EC recurrence or second cancer reflect their having to cope with the stresses and anxieties of having had cancer for the second time, and additional symptoms of renewed treatment.

In conclusion, this study shows the long-lasting, clinically relevant, mostly bowel symptom-related negative impact of EBRT on HRQL of a significant minority of the patients, although not significantly influencing general health and overall quality of life. External beam radiation therapy should be used only when the benefit outweighs the risks of toxicity. These results provide important information to be used for patient counseling and shared decision making regarding costs and benefits of adjuvant treatment. Future studies should be aimed at methods to prevent or improve these symptoms. The reduction of such long-term symptoms might be achieved by using new radiation techniques. First studies of intensity modulated radiation therapy have shown lower rates of both acute and late symptoms (29-31). Preventive measures for pelvic floor function should be investigated.

References

1. Aalders J, Abeler V, Kolstad P, et al. Postoperative external irradiation and prognostic parameters in stage I endometrial carcinoma: Clinical and histopathologic study of 540 patients. *Obstet Gynecol* 1980;56:419-427.
2. Blake P, Swart AM, Orton J, et al. Adjuvant external beam radiotherapy in the treatment of endometrial cancer (MRC ASTEC and NCIC CTG EN.5 randomised trials): Pooled trial results, systematic review, and meta-analysis. *Lancet* 2009;373:137-146.
3. Creutzberg CL, van Putten WL, Koper PC, et al. Surgery and postoperative radiotherapy versus surgery alone for patients with stage-I endometrial carcinoma: Multicentre randomised trial. PORTEC Study Group. *Post Operative Radiation Therapy in Endometrial Carcinoma*. *Lancet* 2000;355:1404-1411.
4. Creutzberg CL, van Putten WL, Koper PC, et al. The morbidity of treatment for patients with Stage I endometrial cancer: Results from a randomized trial. *Int J Radiat Oncol Biol Phys* 2001;51:1246-1255.
5. Keys HM, Roberts JA, Brunetto VL, et al. A phase III trial of surgery with or without adjunctive external pelvic radiation therapy in intermediate risk endometrial adenocarcinoma: A Gynecologic Oncology Group study. *Gynecol Oncol* 2004;92:744-751.
6. Nout RA, Smit VT, Putter H, et al. Vaginal brachytherapy versus pelvic external beam radiotherapy for patients with endometrial cancer of high-intermediate risk (PORTEC-2): An open-label, non-inferiority, randomised trial. *Lancet* 2010;375:816-823.
7. Nout RA, Putter H, Jurgenliemk-Schulz IM, et al. Five-year quality of life of endometrial cancer patients treated in the randomised Post Operative Radiation Therapy in Endometrial Cancer (PORTEC-2) trial and comparison with norm data. *Eur J Cancer* 2012;48:1638-1648.
8. Nout RA, van de Poll-Franse LV, Lybeert ML, et al. Long-term outcome and quality of life of patients with endometrial carcinoma treated with or without pelvic radiotherapy in the post operative radiation therapy in endometrial carcinoma 1 (PORTEC-1) trial. *J Clin Oncol* 2011;29:1692-1700.
9. Marks LB, Carroll PR, Dugan TC, et al. The response of the urinary bladder, urethra, and ureter to radiation and chemotherapy. *Int J Radiat Oncol Biol Phys* 1995;31:1257-1280.

10. Antonakopoulos GN, Hicks RM, Berry RJ. The subcellular basis of damage to the human urinary bladder induced by irradiation. *J Pathol* 1984;143:103-116.
11. Zebrack BJ, Ganz PA, Bernaards CA, et al. Assessing the impact of cancer: Development of a new instrument for long-term survivors. *Psychooncology* 2006;15:407-421.
12. Oerlemans S, Smith SK, Crespi CM, et al. Assessing the impact of cancer among Dutch non-Hodgkin lymphoma survivors compared with their American counterparts: A cross-national study. *Psychooncology* 2013;22:1258-1265.
13. Nout RA, Putter H, Jurgenliemk-Schulz IM, et al. Quality of life after pelvic radiotherapy or vaginal brachytherapy for endometrial cancer: First results of the randomized PORTEC-2 trial. *J Clin Oncol* 2009;27:3547-3556.
14. Aaronson NK, Ahmedzai S, Bergman B, et al. The European Organization for Research and Treatment of Cancer QLQ-C30: A quality-of-life instrument for use in international clinical trials in oncology. *J Natl Cancer Inst* 1993;85:365-376.
15. van Andel G, Bottomley A, Fossa SD, et al. An international field study of the EORTC QLQ-PR25: A questionnaire for assessing the health-related quality of life of patients with prostate cancer. *Eur J Cancer* 2008;44:2418-2424.
16. Greimel E, Bottomley A, Cull A, et al. An international field study of the reliability and validity of a disease-specific questionnaire module (the QLQ-OV28) in assessing the quality of life of patients with ovarian cancer. *Eur J Cancer* 2003;39:1402-1408.
17. Crespi CM, Ganz PA, Petersen L, et al. Refinement and psychometric evaluation of the impact of cancer scale. *J Natl Cancer Inst* 2008;100:1530-1541.
18. Crespi CM, Ganz PA, Petersen L, et al. A procedure for obtaining impact of cancer version 2 scores using version 1 responses. *Qual Life Res* 2013;22:103-109.
19. Cocks K, King MT, Velikova G, et al. Evidence-based guidelines for determination of sample size and interpretation of the European Organisation for the Research and Treatment of Cancer Quality of Life Questionnaire Core 30. *J Clin Oncol* 2011;29:89-96.
20. Cocks K, King MT, Velikova G, et al. Evidence-based guidelines for interpreting change scores for the European Organisation for the Research and Treatment of Cancer Quality of Life Questionnaire Core 30. *Eur J Cancer* 2012;48:1713-1721.
21. Osoba D, Rodrigues G, Myles J, et al. Interpreting the significance of changes in health-related quality-of-life scores. *J Clin Oncol* 1998;16:139-144.
22. Dunberger G, Lind H, Steineck G, et al. Self-reported symptoms of faecal incontinence among long-term gynaecological cancer survivors and population-based controls. *Eur J Cancer* 2010;46:606-615.
23. Geinitz H, Zimmermann FB, Thamm R, et al. Late rectal symptoms and quality of life after conformal radiation therapy for prostate cancer. *Radiother Oncol* 2006;79:341-347.
24. Hazewinkel MH, Sprangers MA, van der Velden J, et al. Long-term cervical cancer survivors suffer from pelvic floor symptoms: A cross-sectional matched cohort study. *Gynecol Oncol* 2010;117:281-286.
25. Di MM, Gallo C, Leigh NB, et al. Symptomatic toxicities experienced during anticancer treatment: Agreement between patient and physician reporting in three randomized trials. *J Clin Oncol* 2015;33:910-915.
26. Andreyev HJ, Benton BE, Lalji A, et al. Algorithm-based management of patients with gastrointestinal symptoms in patients after pelvic radiation treatment (ORBIT): A randomised controlled trial. *Lancet* 2013;382:2084-2092.
27. Yang EJ, Lim JY, Rah UW, et al. Effect of a pelvic floor muscle training program on gynecologic cancer survivors with pelvic floor dysfunction: A randomized controlled trial. *Gynecol Oncol* 2012;125:705-711.
28. Rutledge TL, Rogers R, Lee SJ, et al. A pilot randomized control trial to evaluate pelvic floor muscle training for urinary incontinence among gynecologic cancer survivors. *Gynecol Oncol* 2014;132:154-158.
29. Chen LA, Kim J, Boucher K, et al. Toxicity and cost-effectiveness analysis of intensity modulated radiation therapy versus 3-dimensional conformal radiation therapy for postoperative treatment of gynecologic cancers. *Gynecol Oncol* 2015;136:521-528.
30. Barillot I, Tavernier E, Peignaux K, et al. Impact of post operative intensity modulated radiotherapy on acute gastro-intestinal toxicity for patients with endometrial cancer: Results of the phase II RTCMIENDOMETRE French multicentre trial. *Radiother Oncol* 2014;111:138-143.
31. ClinicalTrials.gov. Prospective randomised phase II trial evaluating adjuvant pelvic radiotherapy using either IMRT or 3-dimensional planning for endometrial cancer. ICORG 09-06. 2015. Charles Gillham, Principal Investigator. Available at: <https://clinicaltrials.gov/ct2/show/NCT01164150>. Accessed April 9, 2015.