

Tilburg University

Estimating economic effects of the great leap forward and the cultural revolution in China

Kwan, Y.; Chow, G.C.

Publication date:
1995

[Link to publication in Tilburg University Research Portal](#)

Citation for published version (APA):

Kwan, Y., & Chow, G. C. (1995). *Estimating economic effects of the great leap forward and the cultural revolution in China*. (CentER Discussion Paper; Vol. 1995-105). CentER.

General rights

Copyright and moral rights for the publications made accessible in the public portal are retained by the authors and/or other copyright owners and it is a condition of accessing publications that users recognise and abide by the legal requirements associated with these rights.

- Users may download and print one copy of any publication from the public portal for the purpose of private study or research.
- You may not further distribute the material or use it for any profit-making activity or commercial gain
- You may freely distribute the URL identifying the publication in the public portal

Take down policy

If you believe that this document breaches copyright please contact us providing details, and we will remove access to the work immediately and investigate your claim.

CBM
R

entER

Discussion paper

for
Economic Research

8414
1995
105



* C I N O 1 4 6 2 *



Tilburg University



Center
for
Economic Research

R
8414
1995-105

No. 95105

419

**ESTIMATING ECONOMIC EFFECTS OF THE
GREAT LEAP FORWARD AND THE
CULTURAL REVOLUTION IN CHINA**

By Y. Kwan and
G. Chow

R11

November 1995

China
Econometric Models
Economic Forecasting

ISSN 0924-7815



Estimating Economic Effects of the Great Leap Forward and the Cultural Revolution in China

Yum K. Kwan
Gregory C. Chow

To measure partially the economic effects of the Great Leap and the Cultural Revolution a simple econometric model is constructed. Consumption, or equivalently investment, is determined by a central planner trying to maximize a multiperiod objective function. Political events are modeled by exogenous changes in the shocks to productivity and to investment which affect the time paths of major economic variables. Effects of the events are measured by comparing the time paths generated by the model with and without the changes in the shocks. The optimization model is estimated using data from 1952 to 1993. The results indicate that without the Great Leap output and consumption per capita in China would have been 2.0 times as great in 1993. Without the Cultural Revolution output and consumption per capita would have been 1.2 times as great.

I. Introduction

What were the economic effects of the Great Leap Forward Movement in 1958-1962 and the Cultural Revolution in 1966-1969 in China? In other words if these two events had not occurred what would have been the time paths of the major economic variables such as consumption, real output and capital stock in the years following 1958? To answer this question one has to compare the historical time paths of these variables with the paths which would have prevailed absent the above events. We first construct an econometric model to explain the growth of the Chinese economy which incorporates the shocks from these two political events. Then the shocks are removed and the hypothetical time paths of the major economic variables are generated from the model. Comparing the hypothetical time paths with the time paths incorporating the shocks provides an answer to our question.

The econometric model has only one sector and includes aggregate output, consumption, investment, physical capital stock and total labor force as major variables. Aggregate output is produced by physical capital and labor according to a Cobb-Douglas production function. Output is divided into consumption and net investment (measured by "accumulation" in Chinese official statistics). Capital stock increases by the flow of investment. To determine investment we assume that actual investment equals planned investment plus an error. Planned investment is determined by the assumption that a central planner maximizes a multiperiod objective function with consumption per laborer as argument. The error may be affected by political events. The logarithm of total factor productivity follows a random walk with drift in normal years. In abnormal years such as during the Great Leap and the Cultural

* Ordering of authors was determined by randomization.

Revolution the residual of the random walk process can also be affected. Thus the effects of political events are modeled by changes in the error of the investment function and in the residual of the random walk process for productivity. Having estimated such a model one can remove the changes in order to measure the economic effects of the two political events. Section II specifies the model and the data. Section III presents the method of estimation and the parameter estimates. Section IV reports on the time paths of major variables obtained by simulating the model absent the shocks from the two political events and provides measures of economic losses attributable to them. Section V concludes.

II. Model and Data

The econometric model consists of four equations. A Cobb-Douglas production function determines aggregate real output Q by physical capital stock K and labor L with constant return to scale. Denoting Q/L and K/L by q and k respectively and net investment per laborer by i , we can write the production function, the output identity, the capital accumulation equation and the equation explaining total factor productivity A as follows.

$$\begin{aligned} (1) \quad & q_t = A_t k_t^{1-\alpha} \\ (2) \quad & q_t = c_t + i_t, \\ (3) \quad & k_{t+1} = k_t + i_t \\ (4) \quad & \ln A_{t+1} = \gamma + \ln A_t + \eta_{t+1} \end{aligned}$$

where η is a random shock to the logarithm of total factor productivity A . Note that the capital accumulation equation is obtained by dividing the original identity in aggregate variables by labor L in two adjacent periods and is therefore only an approximation.

The data for aggregate output Q are national income used (*Statistical Yearbook of China* 1994, abbreviated *SYB*, p.40) divided by the implicit price deflator of national income. The price deflator is the ratio of national income in current prices (*SYB*, p.33; measured in 100 million yuan) to national income in 1952 prices; the latter equals 589 (national income in 1952 in 100 million yuan) times the index of real national income (*SYB*, p.34; = 100 in 1952) divided by 100. In Chinese official statistics national income used equals consumption plus accumulation (net investment) in current prices. In our model this identity is assumed to hold in constant prices. We have estimated real national income used Q , real consumption C and real net investment I by dividing their current values (*SYB*, p. 40) by the above price deflator. Labor L is total labor force (*SYB*, p.88). Given $K = 2213$ (100 million yuan) in 1952 (an estimate from Chow(1993b, p. 821)), we estimate k in 1952 by K/L and k in later years by equation (3).

We assume that the Chinese economy evolves as if there were a central planner who, knowing the parameters of the model as we have specified, tries to maximize the following objective function at the beginning of each period t :

$$(5) \quad E_t \sum_{i=1}^{\infty} \beta^{t+i} \log c_{t+i}$$

subject to the constraints in (1) - (4). This dynamic optimization problem can be solved by defining the control variable as either consumption per laborer c , or investment per laborer i , or even next-period capital stock, as they are related by the identities (2) and (3). This maximization assumption might be questioned. A critic might argue that economic planners in China are not so rational as to have a specific objective function. She would say, just look at what happened to rational economic planning during the Great Leap and the Cultural Revolution. Our response is that during these abnormal periods there were exogenous shocks to the production and investment processes in China (caused to a large extent by the behavior of Chairman Mao!) which the economic planners could not control. However, given these shocks the planners still attempted in each period to maximize the above objective function from that period onward.

Among the possible shortcomings of this model are the treatment of technology, population and labor force as exogenous and the failure to incorporate possible effects through effects on human capital formation. In spite of these possible shortcomings we believe that the present study is an important step towards measuring the economic effects of the two major political events and can serve as a benchmark for incorporating other important effects in future research.

III. Statistical Estimation

As discussed in the last section, the observed Chinese time series data on output, consumption and capital are interpreted as the outcome of a dynamic optimization process. The solution to the dynamic optimization problem will depend on the parameters (α, β, γ) and the process governing the evolution of productivity. When we estimate the parameters by the method of maximum likelihood, we are in fact searching for a set of parameters for which the solution to the dynamic optimization problem and the observed series are as close as possible. A dynamic optimization problem is thus embedded within each evaluation of the likelihood function. More precisely, calculating the likelihood value for a given parameter setting proceeds in two stages. First, an optimal decision function for investment is determined by assuming that the central planner in China maximizes the objective function (5) subject to the constraints of the model (1) - (4) at each period t . Second, the optimal decision function is combined with the original model to form an econometric model for which the likelihood value can be calculated.

The dynamic optimization problem as stated in (1) - (5) can be converted into an equivalent version involving only stationary processes. The idea is to detrend all variables along their balanced growth paths. Define

$$(6) \quad z_t = A_t^{1/\alpha}, \quad \bar{k}_{t+1} = k_{t+1} / z_t, \quad \bar{c}_t = c_t / z_t, \quad \bar{z}_t = z_t / z_{t-1}.$$

Replacing i by $q - c$ and q by the production function, we can write the capital accumulation equation as

$$\bar{k}_{t+1} = k_t + A_t k_t^{1-\alpha} - c_t,$$

implying

$$\bar{k}_{t+1} / z_t = (k_t / z_{t-1}) z_{t-1} / z_t + k_t^{1-\alpha} z_t^{\alpha-1} - c_t / z_t,$$

or, in terms of the detrended variables defined in (6),

$$(7) \quad \bar{k}_{t+1} = \bar{k}_t \bar{z}_t^{-1} + \bar{k}_t^{1-\alpha} \bar{z}_t^{\alpha-1} - \bar{c}_t.$$

Similarly the productivity equation (4) can be written as

$$(8) \quad \ln \bar{z}_t = \mu + \varepsilon_t,$$

where

$$\mu = \gamma / \alpha, \quad \varepsilon_t = \eta_t / \alpha.$$

Since z_t is exogenous, we may replace the objective function (5) by

$$(9) \quad E_t \sum_{t=1}^{\infty} \beta^{t+1} \ln \bar{c}_{t+1}$$

Maximizing (9) subject to (7) - (8) is equivalent to the non-stationary version in (1) - (5). We approach the dynamic optimization problem by first substituting (7) into (9) to eliminate the detrended consumption variable, and then define the control variable to be $\ln \bar{k}_{t+1}$, and two state variables $\ln \bar{z}_t$ and $\ln \bar{k}_t$. With state and control so defined, we obtain numerically an approximate solution in the form of a log-linear first-order difference equation:

$$(10) \quad \ln \bar{k}_t = g + G_1 \ln \bar{z}_{t-1} + G_2 \ln \bar{k}_{t-1}$$

The coefficients (g, G_1, G_2) may be regarded as reduced form parameters, as they are implicit functions of the three structural parameters (α, β, γ). The solution procedure and numerical algorithm can be found in the appendix.

Having derived the planned capital stock as described by (10), we allow actual capital stock to differ from planned capital by an error e due partly to failure of the planner to execute the plan and partly to failure of our simple model to capture the complicated economy completely. The econometric model to be estimated consists of two equations, an equation for $\ln \bar{z}_t$ and an equation for $\ln \bar{k}_t$, which can be written as a system of two regression equations:

$$(11) \quad y_t = \Gamma x_t + \xi_t,$$

where $y_t = (\ln \bar{z}_t, \ln \bar{k}_t)'$, $x_t = (1, \ln \bar{z}_{t-1}, \ln \bar{k}_{t-1})'$ and

$$(12) \quad \Gamma = \begin{bmatrix} \mu & 0 & 0 \\ g & G_1 & G_2 \end{bmatrix} \quad \xi_t = \begin{bmatrix} \varepsilon_t \\ e_t \end{bmatrix}$$

With n observations (11) can be stacked up as

$$(13) \quad Y = X\Gamma + \Xi$$

with the transpose of (11) being the t th row of (13).

Assuming normal and serially uncorrelated residuals, and ξ_t having covariance matrix Σ , we can use the well-known concentrated log-likelihood function (see Chow(1983), pp.170-171))

$$(14) \quad \ln L = \text{const} - (n/2) \ln |n^{-1}(Y - X\Gamma)'(Y - X\Gamma)|$$

and the maximum likelihood estimate of Σ is given by

$$(15) \quad \hat{\Sigma} = n^{-1}(Y - X\hat{\Gamma})'(Y - X\hat{\Gamma})$$

To calculate likelihood value for the parameters (α, β, μ) we use these parameters and the data on output and capital to compute z from the production function, \bar{z}_t and \bar{k}_t from equation (6), and the coefficients in Γ using equation (10). Thus the likelihood function (14) can be computed from the parameters and the data. We maximize the likelihood function in a sequential manner, i.e. $\max_{\alpha} \max_{\beta, \mu} \ln L(\alpha, \beta, \mu)$. The maximization with respect to (β, μ) is performed by the MAXLIK package in GAUSS; and the line-search in α is done by Brent's method (see Press et al. (1992, p.402-405)). The point estimate and standard error of γ can be recovered from that of α and μ via (8). To make sure that we have indeed located the global maximum, we have also used the simulated annealing algorithm as implemented by Goffe, Ferrier, and Rogers (1991) to maximize the likelihood function. The sample period is from 1954 to 1993.

The maximum likelihood estimates of (α, β, γ) , with standard errors given in parentheses, are

$$(16) \quad (\hat{\alpha}, \hat{\beta}, \hat{\gamma}) = [.7495 (.0108), .9999 (.0001), .0218 (.0025)]$$

mean log likelihood = 6.6120, sample size = 40.

The estimate 0.7495 for labor elasticity of production is reasonable. It is somewhat higher than the estimate of about 0.4 reported in Chow(1993b, especially Table VII); but the latter study uses a deterministic trend for log total factor productivity and a sample period ending in 1980 whereas the current estimate is based on a stochastic trend and a sample period extending to 1993. The estimate 0.9999 for the annual discount factor is also reasonable in view of the high value which Chinese planners are supposed to place on future consumption or current investment at the expense of current consumption. This parameter is considered difficult to estimate statistically and

is often imposed *a priori* in empirical studies of real business cycles in the United States. The positive drift of log total factor productivity of 0.0218 is also reasonable as the sample includes the post-reform years 1978-1993. It is consistent with Chow (1993b) which found no positive deterministic trend in total factor productivity during the sample period from 1952 to 1980 but a positive trend from 1979 on. Unlike Chow (1993b), the present study not only extends the sample period to 1993 but in estimating model parameters does not exclude any observations which are considered abnormal. This extension is possible partly because a stochastic trend is used for log total productivity rather than a linear deterministic trend as in Chow (1993b).

For sensitivity analysis we present below estimates for the remaining two parameters when the labor elasticity parameter is fixed *a priori* at other values sometimes chosen in growth accounting exercises (see e.g. Li, Gong and Zheng (1995)).

α	$\hat{\beta}$	$\hat{\gamma}$	mean log likelihood
0.4	0.9627 (0.0050)	0.0046 (0.0011)	5.9754
0.5	0.9715 (0.0037)	0.0083 (0.0017)	6.2012
0.6	0.9817 (0.0024)	0.0132 (0.0024)	6.3869
0.7	0.9940 (0.0015)	0.0194 (0.0033)	6.5456

IV. Measuring the Effects of Two Political Events

To estimate the economic effects of the Great Leap Forward alone we change the estimated residuals of the two reduced form equations in the years 1958-1962 to the mean values of the corresponding residuals in the remaining years; see Figures I and II. Columns 2 and 3 of Table I present actual output per laborer q_t (which can be generated by our model if the estimated residuals are used in the two equations) and simulated output q_t^* which is generated by our model if the estimated residuals in the years 1958-1962 are changed to the mean values of the remaining years. The remaining columns of Table I are the corresponding actual and simulated series for consumption, capital stock and log productivity.

From Table I and Figure III we observe that simulated output (which would have obtained absent the Great Leap) is about 2 times actual output in 1993. This result is derived from two sources. First, simulated total factor productivity in 1993 is about 0.56 higher than the actual value in logarithm, or about 1.74 times the actual value. Second, simulated capital stock per laborer in 1993 is 1.72 times the actual value, as can be readily computed from the relevant entries in Table I. According to our model and commonly used models of real business cycles for the U.S. economy shifts in productivity due to shocks are permanent. Observe in Table I and Figure VI that simulated log productivity in 1962 is .9058, or .5587 higher than actual log productivity. The last figure equals 2.2874 - 1.7286, the difference between simulated and actual log productivity in 1993. Such a parallel shift in log productivity due to the Great Leap is clearly shown in Figure VI. This is a characteristic of our model as equation (4) has a unit root which implies a permanent shift in total factor productivity when its residual changes. The permanent shift in productivity in turn implies that

output, consumption and capital will all undergo a permanent level shift. There is no effect on the steady state growth rate of each variable.

To see the extent of the permanent level shift, we generate 500 residuals of zero mean and covariance matrix given in (15) and append them to the observed residuals as well as our modified residuals. Output, consumption and capital are calculated according to these two extended residuals series. Examining the last 100 entries reveals that the steady state has been attained, as evident by the balanced growth of the three variables. Taking the ratio of the two output series gives the permanent level effect which we report in Table II (the row labeled as "steady state").

To assess the effect of the Cultural Revolution and the combined effect of the two Movements, we have performed similar simulation exercise as described above by removing residuals of the turbulent years. Table II provides a short summary for comparison with the Great Leap case; tables similar to Table I are available on request. For example, the output level by 1992 would have been 2.7 times higher than otherwise if both political movements had never occurred. To show the degree of sensitivity of our results, Tables III-IV give similar comparisons when other parameter values reported in Section III are used.

Absent the Cultural Revolution output in China in 1992 would have been 1.20 times as large as the actual figure. This estimate might be considered too small. The possibility of under-estimation is mainly due to the omission of the effect on human capital formation in our model. Given that human capital is not considered and within the confine of our model, the measured effect appears reasonable. The disruption of the Cultural Revolution in the production of physical output in China is recognized to be much smaller than the disruption of the Great Leap. The relative magnitudes of 1.2 and 2.0 seem quite plausible. The Cultural Revolution is known for its effect on the production of human capital when many schools and universities were closed or ceased to function properly. The estimate of 1.2 can serve as a benchmark for studying the effects of the Cultural Revolution through its effect on the accumulation of human capital.

V. Conclusions

We have constructed a very simple econometric model to measure the effects of two major political events in China. The model is based on a dynamic optimization framework. It is assumed that an economic planner in China tries to maximize a multiperiod object function in making consumption and investment decisions. The values of the parameters of the optimization model as estimated by maximum likelihood are reasonable. The dynamic optimization framework is useful for studying economic behavior and the effects of political events in China as in other countries.

Concerning the effects of the Great Leap and the Cultural Revolution, our results indicate that absent the former output and consumption per laborer in 1990 would have been 2.0 times as large as the observed, that absent the latter output and consumption would have been 1.2 times as large and that if neither had occurred output and consumption would have been 2.7 times the actual amounts.

Appendix

A standard dynamic optimization problem is to choose a sequence of q by 1 control vectors $\{u_t, t = 0, 1, 2, \dots\}$ to solve

$$(A1) \quad \max E_0 \sum_{t=0}^{\infty} \beta^t r(x_t, u_t)$$

subject to

$$(A2) \quad x_{t+1} = f(x_t, u_t) + \varepsilon_{t+1}.$$

where E_0 is the conditional expectation operator given information at time 0, x_t is a p by 1 vector of state variables, and ε_t is an iid random vector with mean zero and covariance matrix Σ . Our problem is to solve

$$(A3) \quad \max E_0 \sum_{t=0}^{\infty} \beta^t \ln \{ \bar{k}_t^{1-\alpha} \bar{z}_t^{\alpha-1} - \bar{k}_{t+1} + \bar{k}_t \bar{z}_t^{-1} \}$$

subject to

$$(A4) \quad \ln \bar{z}_{t+1} = \mu + \varepsilon_{t+1}, \quad \ln \bar{k}_{t+1} = u_t$$

Our problem can be mapped into the standard form by defining the states and control as

$$(A5) \quad x_t \equiv (x_{1t}, x_{2t})' = (\ln \bar{z}_t, \ln \bar{k}_t)', \quad u_t = \ln \bar{k}_{t+1}.$$

The objective function and the constraint are respectively

$$(A6) \quad r(x_t, u_t) = \ln \{ \exp((1-\alpha)(x_{2t} - x_{1t})) - \exp(u_t) + \exp(x_{2t} - x_{1t}) \}$$

and

$$(A7) \quad f(x_t, u_t) = Ax_t + Cu_t + b,$$

where A is a 2 by 2 zero matrix, $C = (0, 1)'$, and $b = (\mu, 0)'$. The steady state (\bar{u}, \bar{x}) can be found by solving a deterministic, time invariant version of the first order conditions. For our choice of state and control as in (A5), the steady state values are

$$(A8) \quad \bar{u} = -\frac{1}{\alpha} \ln[\beta^{-1} \exp(\mu) - 1] + \frac{1}{\alpha} \ln(1-\alpha) + \mu, \quad \bar{x}_1 = \mu, \quad \bar{x}_2 = \bar{u}.$$

Only in exceptional cases would one be able to find an analytical solution for the optimal control function. In most applications one has to rely on numerical approximation. One convenient way to do so has been developed in Chow (1992,

1993a). We now describe briefly the solution procedure. Consider the first order conditions:

$$(A9) \quad r_2(x_t, u_t) + \beta f_2'(x_t, u_t) E_t \lambda_{t+1} = 0,$$

$$(A10) \quad r_1(x_t, u_t) + \beta f_1'(x_t, u_t) E_t \lambda_{t+1} = \lambda_t,$$

$$(A11) \quad x_{t+1} = f(x_t, u_t) + \varepsilon_{t+1}.$$

where the subscripts 1 and 2 of the functions r and f denote derivatives with respect to the first and second arguments respectively. λ is a vector of random Lagrange multipliers. We proceed by linearizing the non-linear functions in (A9) - (A11) around the steady state (\bar{x}, \bar{u}) :

$$(A12) \quad f = Ax + Cu + b; \quad r_1 = K_{11}x + K_{12}u + k_1; \quad r_2 = K_{21}x + K_{22}u + k_2$$

Given the linear functions above, if λ is assumed to be linear, say equal to $Hx + h$, substituting these functions in the first order conditions will yield a linear control function

$$(A13) \quad u = Gx + g$$

where

$$(A14) \quad G = -(K_{22} + \beta C HC)^{-1}(K_{21} + \beta C HA)$$

$$(A15) \quad g = -(K_{22} + \beta C HC)^{-1}(k_2 + \beta C (Hb + h))$$

and the coefficient matrices of the Lagrangean function are respectively

$$(A16) \quad H = K_{11} + K_{12}G + \beta A' H(A + CG)$$

$$(A17) \quad h = (K_{12} + \beta A' HC)g + k_1 + \beta A' (Hb + h)$$

Iterating the matrix equation system (A14) - (A17) until convergence gives the required matrices G , g , H and h . We have accelerated such a direct iteration scheme by incorporating a modified version of the doubling algorithm described in Anderson and Moore (1979, p. 159). A detail discussion of the algorithm and numerical examples will be reported elsewhere.

References

- Anderson, Brian D. and John B. Moore, *Optimal Filtering* (New Jersey: Prentice-Hall, 1979).
- Chow, Gregory C., *Econometrics* (New York: McGraw-Hill, 1983).
- _____, "Dynamic optimization without dynamic programming," *Economic Modelling*, IX (1992), 3-9.
- _____, "Optimal control without solving the Bellman equation," *Journal of Economic Dynamics and Control*, XVII (1993a), 621-630.
- _____, "Capital Formation and Economic Growth in China," *Quarterly Journal of Economics*, (1993b) 809-842.
- Goffe, William L., Gary Ferrier and John Rogers, "Global Optimization of Statistical Function," in Hans M. Amman, D. A. Belsley and Louis F. Pau, ed., *Computational Economics and Econometrics*, Vol. 1 (Dordrecht: Kluwer, 1992).
- Li, Jingwen, Feihong Gong and Yisheng Zheng, "Productivity and China's Economic Growth, 1953-1990," in K. Tsui, T. Hsueh and T. Rawski, ed., *Productivity, Efficiency and Reform in China's Economy* (Hong Kong: Chinese University Press, 1995).
- Lin, Justin Y., "Collectivization and China's agricultural crisis in 1959-1961," *Journal of Political Economy*, XCVIII (1990) 1228-1252.
- Press, William H., Saul A. Teukolsky, William T. Vetterling and Brian P. Flannery, *Numerical Recipes in C: The Art of Scientific Computing*, Second Edition (New York: Cambridge University Press, 1992).
- Statistical Yearbook of China* (Beijing: State Statistical Bureau, 1994).

Table I: Great Leap Forward effect

year	output		consumption		capital stock		log productivity	
	observed	simulated	observed	simulated	observed	simulated	observed	simulated
1952	2.9283	2.9283	2.3011	2.3011	10.676	10.676	0.48132	0.48132
1953	3.2227	3.2227	2.4780	2.4780	11.303	11.303	0.56285	0.56285
1954	3.3276	3.3276	2.4794	2.4794	12.048	12.048	0.57888	0.57888
1955	3.4661	3.4661	2.6715	2.6715	12.896	12.896	0.60262	0.60262
1956	3.7717	3.7717	2.8500	2.8500	13.691	13.691	0.67214	0.67214
1957	3.9038	3.9038	2.9310	2.7747	14.612	14.612	0.69025	0.69025
1958	4.1304	4.1525	2.7289	2.9482	15.585	15.741	0.73053	0.73336
1959	4.7393	4.4162	2.6635	3.1322	16.986	16.946	0.84648	0.77647
1960	4.6947	4.6959	2.8339	3.3274	19.062	18.230	0.80816	0.81959
1961	3.2774	4.9924	2.6465	3.5344	20.923	19.598	0.82542	0.86270
1962	3.0530	5.3069	2.7342	4.2926	21.554	21.056	0.34707	0.90581
1963	3.3543	5.8781	2.7680	4.5729	21.873	22.070	0.43750	0.99625
1964	3.6400	6.4285	2.8314	4.8570	22.459	23.376	0.51262	1.0714
1965	3.9385	7.0076	2.8712	5.1104	23.268	24.947	0.58258	1.1413
1966	4.4182	7.9173	3.0654	5.6422	24.335	26.844	0.68628	1.2450
1967	3.9337	7.0975	3.0963	5.3530	25.688	29.119	0.55660	1.1153
1968	3.6809	6.6849	2.9024	4.9747	26.525	30.864	0.48213	1.0409
1969	4.0273	7.3599	3.0919	5.4272	27.303	32.574	0.56482	1.1236
1970	4.9087	9.0246	3.2916	6.2019	28.239	34.507	0.75429	1.3130
1971	5.0405	9.3203	3.3235	6.2964	29.856	37.329	0.76684	1.3256
1972	5.1180	9.5159	3.5018	6.5478	31.573	40.353	0.76810	1.3268
1973	5.4831	10.249	3.6789	6.9632	33.189	43.321	0.82451	1.3833
1974	5.4627	10.262	3.6958	6.9540	34.993	46.607	0.80751	1.3663
1975	5.8133	10.974	3.8447	7.3186	36.760	49.915	0.85738	1.4161
1976	5.6731	10.759	3.9225	7.3361	38.729	53.570	0.81990	1.3786
1977	5.8764	11.194	3.9762	7.4969	40.479	56.993	0.84404	1.4028
1978	6.5737	12.576	4.1718	8.0845	42.379	60.690	0.94469	1.5034
1979	6.9773	13.402	4.5635	8.8103	44.781	65.181	0.99046	1.5492
1980	7.1944	13.873	4.9267	9.4212	47.195	69.773	1.0080	1.5667
1981	7.2277	13.990	5.1806	9.8049	49.463	74.225	1.0008	1.5596
1982	7.6748	14.908	5.4636	10.415	51.510	78.410	1.0507	1.6094
1983	8.2453	16.072	5.7936	11.144	53.721	82.903	1.1119	1.6706
1984	9.0219	17.643	6.1797	12.032	56.173	87.831	1.1907	1.7494
1985	10.490	20.579	6.8177	13.562	59.015	93.442	1.3291	1.8878
1986	11.107	21.854	7.2579	14.450	62.687	100.46	1.3711	1.9298
1987	11.438	22.570	7.5423	14.988	66.536	107.86	1.3855	1.9443
1988	12.408	24.554	8.1293	16.238	70.431	115.44	1.4528	2.0115
1989	12.492	24.785	8.2737	16.466	74.710	123.76	1.4447	2.0034
1990	12.409	24.684	8.3370	16.514	78.928	132.08	1.4243	1.9830
1991	12.806	25.536	8.6106	17.069	83.000	140.25	1.4432	2.0019
1992	14.512	29.005	9.5145	19.074	87.196	148.72	1.5559	2.1147
1993	17.491	35.036			92.194	158.65	1.7286	2.2874
mean	6.7323	12.244	4.4410	7.9904	39.606	57.273	0.90151	1.3469
std dev	3.6746	8.1727	2.0767	4.7878	22.816	42.633	0.35652	0.47905

Table II: Simulation/observed level in 1992

	Great Leap	Cultural Revolution	Both
output	2.0031	1.2033	2.7130
consumption	2.0047	1.2022	2.7261
capital	1.7208	1.1537	2.1687

steady state	2.1074	1.2204	2.9238
--------------	--------	--------	--------

- $(\hat{\alpha}, \hat{\beta}, \hat{\gamma}) = (0.7495, 0.9999, 0.0218)$

Table III: Simulation/observed level in 1992

	Great Leap	Cultural Revolution	Both
output	2.5446	1.2355	3.6549
consumption	2.5680	1.2349	3.7277
capital	1.9708	1.1643	2.5461

steady state	3.2856	1.3111	5.2465
--------------	--------	--------	--------

- α fixed at 0.5, $\hat{\beta} = 0.9715, \hat{\gamma} = 0.0083$.

Table IV: Simulation/observed level in 1992

	Great Leap	Cultural Revolution	Both
output	2.2907	1.2217	3.2082
consumption	2.3008	1.2207	3.2459
capital	1.8614	1.1597	2.3796

steady state	2.6306	1.2648	3.9152
--------------	--------	--------	--------

- α fixed at 0.6, $\hat{\beta} = 0.9817, \hat{\gamma} = 0.0132$.

GAUSS Wed Oct 25 09:36:52 1995

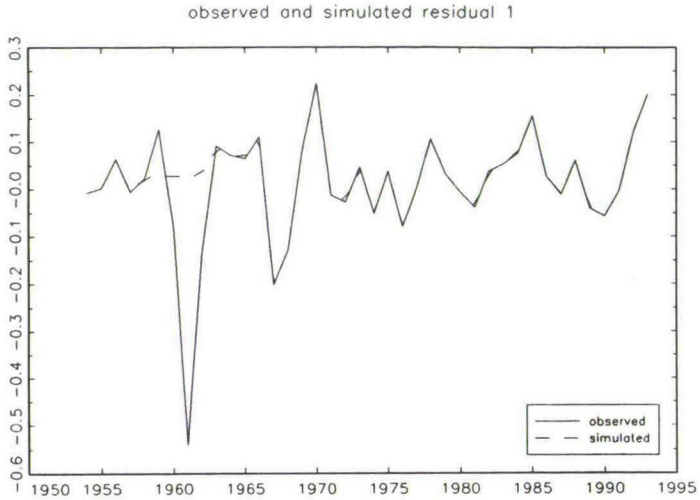


Figure I: Great Leap Forward effect

GAUSS Wed Oct 25 09:37:09 1995

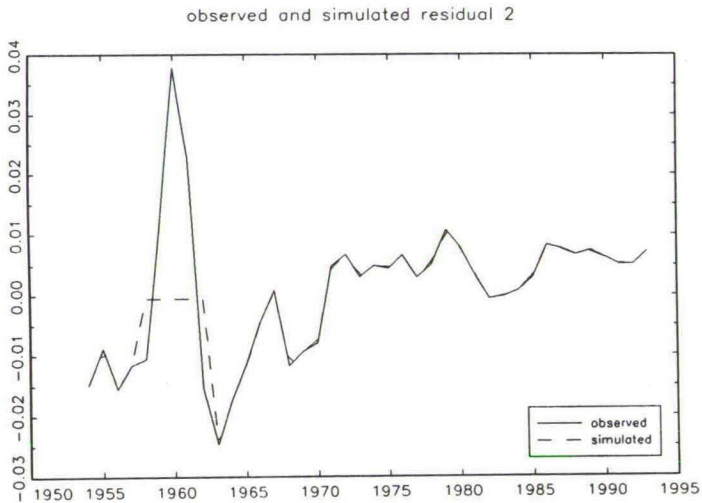


Figure II: Great Leap Forward effect

GAUSS Wed Oct 25 09:37:27 1995

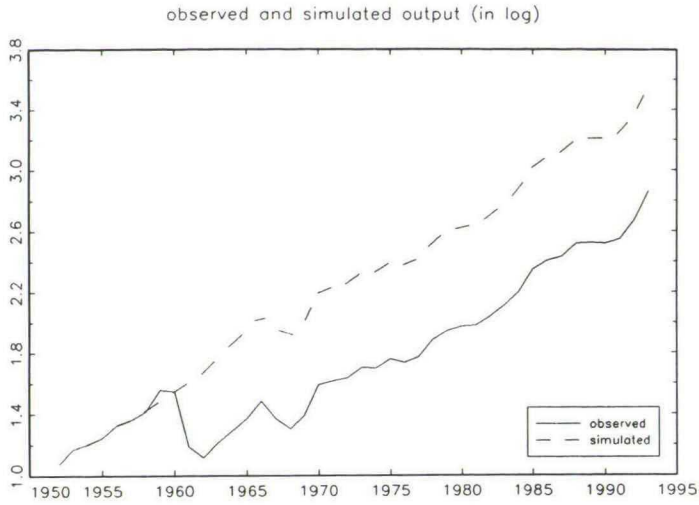


Figure III: Great Leap Forward effect

GAUSS Wed Oct 25 09:37:41 1995

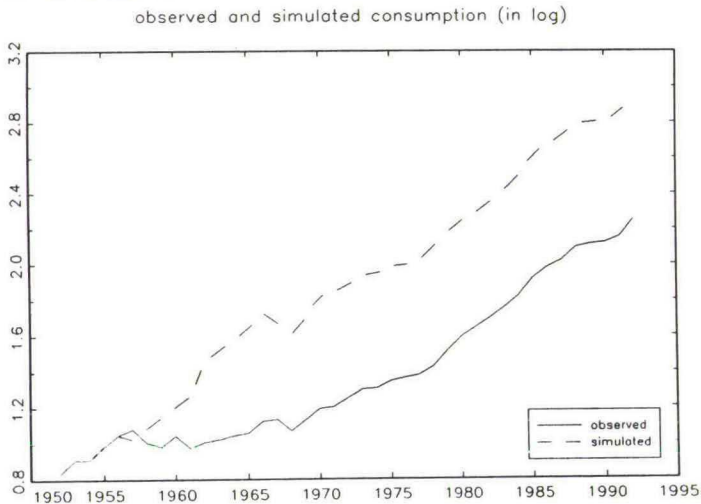


Figure IV: Great Leap Forward effect

GAUSS Wed Oct 25 09:37:58 1995

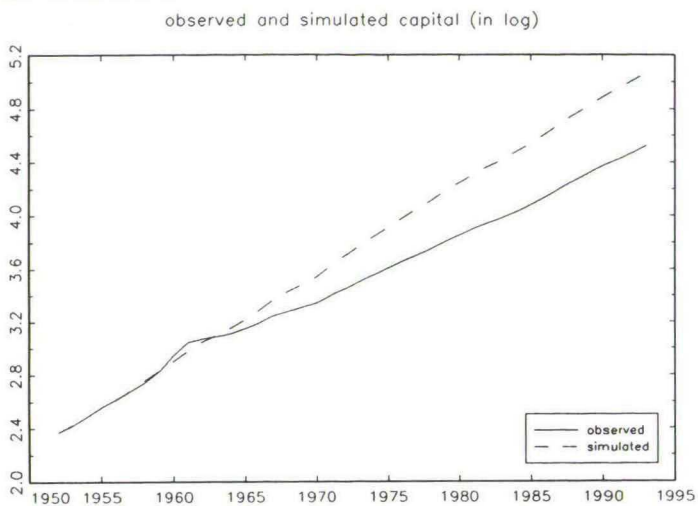


Figure V: Great Leap Forward effect

GAUSS Wed Oct 25 09:38:12 1995

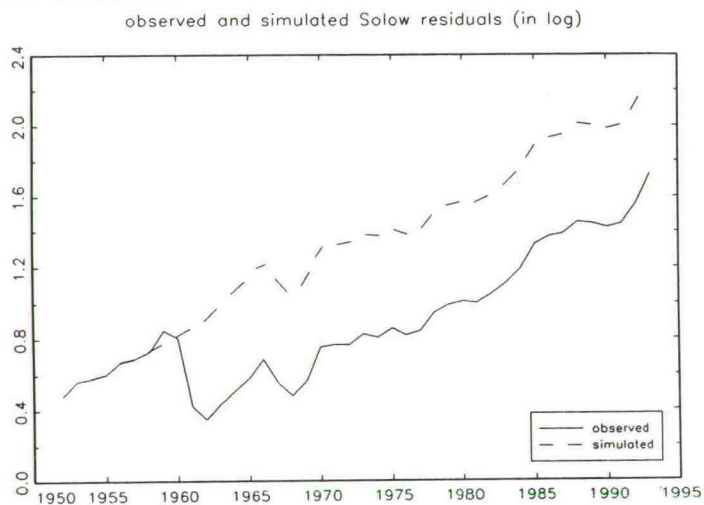


Figure VI: Great Leap Forward effect

No.	Author(s)	Title
9514	R.D. van der Mei	Polling Systems with Markovian Server Routing
9515	M. Das	Extensions of the Ordered Response Model Applied to Consumer Valuation of New Products
9516	P.W.J. De Bijl	Entry Deterrence and Signaling in Markets for Search Goods
9517	G. Koop, J. Osiewalski and M.F.J. Steel	The Components of Output Growth: A Cross-Country Analysis
9518	J. Suijs, H. Hamers and S. Tijs	On Consistency of Reward Allocation Rules in Sequencing Situations
9519	R.F. Hartl and P.M. Kort	Optimal Input Substitution of a Firm Facing an Environmental Constraint
9520	A. Lejour	Cooperative and Competitive Policies in the EU: The European Siamese Twin?
9521	H.A. Keuzenkamp	The Econometrics of the Holy Grail: A Critique
9522	E. van der Heijden	Opinions concerning Pension Systems. An Analysis of Dutch Survey Data
9523	P. Bossaerts and P. Hillion	Local Parametric Analysis of Hedging in Discrete Time
9524	S. Hochgürtel, R. Alessie and A. van Soest	Household Portfolio Allocation in the Netherlands: Saving Accounts versus Stocks and Bonds
9525	C. Fernandez, J. Osiewalski and M.F.J. Steel	Inference Robustness in Multivariate Models with a Scale Parameter
9526	G.-J. Otten, P. Borm, T. Storcken and S. Tijs	Decomposable Effectivity Functions
9527	M. Lettau and H. Uhlig	Rule of Thumb and Dynamic Programming
9528	F. van Megen, P. Borm, and S. Tijs	A Perfectness Concept for Multicriteria Games
9529	H. Hamers	On the Concavity of Delivery Games
9530	V. Bhaskar	On the Generic Instability of Mixed Strategies in Asymmetric Contests
9531	E. Canton	Efficiency Wages and the Business Cycle
9532	J.J.G. Lemmen and S.C.W. Eijffinger	Financial Integration in Europe: Evidence from Euler Equation Tests

No.	Author(s)	Title
9533	P.W.J. De Bijl	Strategic Delegation of Responsibility in Competing Firms
9534	F. de Jong and T. Nijman	High Frequency Analysis of Lead-Lag Relationships Between Financial Markets
9535	B. Dutta, A. van den Nouweland and S. Tijs	Link Formation in Cooperative Situations
9536	B. Bensaid and O. Jeanne	The Instability of Fixed Exchange Rate Systems when Raising the Nominal Interest Rate is Costly
9537	E.C.M. van der Heijden, J.H.M. Nelissen and H.A.A. Verbon	Altruism and Fairness in a Public Pension System
9538	L. Meijdam and H.A.A. Verbon	Aging and Public Pensions in an Overlapping-Generations Model
9539	H. Huizinga	International Trade and Migration in the Presence of Sector-Specific Labor Quality Pricing Distortions
9540	J. Miller	A Comment on Holmlund & Lindén's "Job Matching, Temporary Public Employment, and Unemployment"
9541	H. Huizinga	Taxation and the Transfer of Technology by Multinational Firms
9542	J.P.C. Kleijnen	Statistical Validation of Simulation Models: A Case Study
9543	H.L.F. de Groot and A.B.T.M. van Schaik	Relative Convergence in a Dual Economy with Tradeable and Non-Tradeable Goods
9544	C. Dustmann and A. van Soest	Generalized Switching Regression Analysis of Private and Public Sector Wage Structures in Germany
9545	C. Kilby	Supervision and Performance: The Case of World Bank Projects
9546	G.W.J. Hendrikse and C.P. Veerman	Marketing Cooperatives and Financial Structure
9547	R.M.W.J. Beetsma and A.L. Bovenberg	Designing Fiscal and Monetary Institutions in a Second-Best World
9548	R. Strausz	Collusion and Renegotiation in a Principal-Supervisor-Agent Relationship
9549	F. Verboven	Localized Competition, Multimarket Operation and Collusive Behavior
9550	R.C. Douven and J.C. Engwerda	Properties of N -person Axiomatic Bargaining Solutions if the Pareto Frontier is Twice Differentiable and Strictly Concave

No.	Author(s)	Title
9551	J.C. Engwerda and A.J.T.M. Weeren	The Open-Loop Nash Equilibrium in LQ-Games Revisited
9552	M. Das and A. van Soest	Expected and Realized Income Changes: Evidence from the Dutch Socio-Economic Panel
9553	J. Suijs	On Incentive Compatibility and Budget Balancedness in Public Decision Making
9554	M. Lettau and H. Uhlig	Can Habit Formation be Reconciled with Business Cycle Facts?
9555	F.H. Page and M.H. Wooders	The Partnered Core of an Economy
9556	J. Stennek	Competition Reduces X-Inefficiency. A Note on a Limited Liability Mechanism
9557	K. Aardal and S. van Hoesel	Polyhedral Techniques in Combinatorial Optimization
9558	R.M.W.J. Beetsma and A.L. Bovenberg	Designing Fiscal and Monetary Institutions for a European Monetary Union
9559	R.M.W.J. Beetsma and A.L. Bovenberg	Monetary Union without Fiscal Coordination May Discipline Policymakers
9560	R. Strausz	Delegation of Monitoring in a Principal-Agent Relationship
9561	A. Lejour	Social Insurance and the Completion of the Internal Market
9562	J. Bouckaert	Monopolistic Competition with a Mail Order Business
9563	H. Haller	Household Decisions and Equilibrium Efficiency
9564	T. Chou and H. Haller	The Division of Profit in Sequential Innovation Reconsidered
9565	A. Blume	Learning, Experimentation, and Long-Run Behavior in Games
9566	H. Uhlig	Transition and Financial Collapse
9567	R.C.H. Cheng and J.P.C. Kleijnen	Optimal Design of Simulation Experiments with Nearly Saturated Queues
9568	M.F.J. Steel	Posterior Analysis of Stochastic Volatility Models with Flexible Tails
9569	M.P. Berg	Age-Dependent Failure Modelling: A Hazard-Function Approach
9570	F. Verboven	Testing for Monopoly Power when Products are Differentiated in Quality

No.	Author(s)	Title
9571	B. Melenberg and A. van Soest	Semiparametric Estimation of Equivalence Scales Using Subjective Information
9572	J. Stennek	Consumer's Welfare and Change in Stochastic Partial-Equilibrium Price
9573	E. van Damme	Game Theory: The Next Stage
9574	B. Gupta	Collusion in the Indian Tea Industry in the Great Depression: An Analysis of Panel Data
9575	A.B.T.M. van Schaik and H.L.F. de Groot	Unemployment and Endogenous Growth
9576	A.J.T.M. Weeren, J.M. Schumacher and J.C. Engwerda	Coordination in Continuously Repeated Games
9577	A. van den Nouweland, S. Tijs and M. Wooders	Axiomatizations of Lindahl and Ratio Equilibria in Public Good Economies
9578	Richard F. Hartl and Peter M. Kort	Capital Accumulation of a Firm Facing an Emissions Tax
9579	S. Eijffinger and E. Schaling	Optimal Commitment in an Open Economy: Credibility Vs. Flexibility
9580	Willem J.H. Van Groenendaal	Estimating Net Present Value Variability for Deterministic Models
9581	M. Perry and P.J. Reny	A General Solution to King Solomon's Dilemma
9582	H. Huizinga and S.B. Nielsen	Capital Income and Profits Taxation with Foreign Ownership of Firms
9583	T. Berglund and R. Kabir	What Explains the Difference Between the Futures' Price and its "Fair" Value? Evidence from the European Options Exchange
9584	F. Janssen, T. de Kok and F. van der Duyn Schouten	Approximations for the Delivery Splitting Model
9585	E. Canton	Labour Supply Shocks and Neoclassical Theory
9586	E. Ley, M. Steel	A Model of Management Teams
9587	S. Eijffinger, J. de Haan	The Political Economy of Central Bank Independence
9588	J. Suijs, P. Borm, A. De Waegenaere, S. Tijs	Cooperative games with stochastic payoffs
9589	J. Ziliak and T. Kniesner	Estimating Life-Cycle Labor Tax Effects

No.	Author(s)	Title
9590	M. van de Ven	Public pensions in a Representative Democracy
9591	C. Fernandez, M. Steel	Reference Priors in Non-Normal Location Problems
9592	K. Wärneryd	Demystifying Rational Expectations Theory through an Economic-Psychological Model
9593	R. Alessie, A. Lusardi, A. Kapteyn	Saving and Wealth Holdings of the Elderly
9594	R. Joosten and D. Talman	A Globally Convergent Price Adjustment Process for Exchange Economies
9595	E. Calvo, J. Lasaga and A. v.d. Nouweland	Probabilistic graphs in cooperative games: a model inspired by voting situations
9596	R. Douven and J. Plasman	Convergence and International Policy Coordination in the EU: a Dynamic Games Approach
9597	H. Uhlig	A Toolkit Analyzing Nonlinear Dynamic Stochastic Models Easily
9598	M. Lettau and T. Van Zandt	Robustness of Adaptive Expectations as an Equilibrium Selection Device
9599	H. Bloemen	The Relation between Wealth and Labour Market Transitions: an Empirical Study for the Netherlands
95100	J. Blanc and L. Lenzini	Analysis of Communication Systems with Timed Token Protocols using the Power-Series Algorithm
95101	R. Beetsma and L. Bovenberg	The Interaction of Fiscal and Monetary Policy in a Monetary Union: Balancing Credibility and Flexibility
95102	P. de Bijl	Aftermarkets: The Monopoly Case
95103	F. Kumay	Unanticipated Money and the Demand for Foreign Assets - A Rational Expectations Approach
95104	M. Vázquez-Brage, A. van den Nouweland, I. García- Jurado	Owen's Coalitional Value and Aircraft Landing Fees
95105	Y. Kwan and G. Chow	Estimating Economic Effects of the Great Leap Forward and the Cultural Revolution in China

P.O. BOX 90153. 5000 LE TILBURG. THE NETHERLANDS

Bibliotheek K. U. Brabant



17 000 01240417 5