

ARTICLE

Received 19 May 2015 | Accepted 31 Jul 2015 | Published 22 Sep 2015

DOI: 10.1038/ncomms9234

OPEN

Cis-eQTL analysis and functional validation of candidate susceptibility genes for high-grade serous ovarian cancer

Kate Lawrenson, Qiyang Li *et al.*[#]

Genome-wide association studies have reported 11 regions conferring risk of high-grade serous epithelial ovarian cancer (HGSOC). Expression quantitative trait locus (eQTL) analyses can identify candidate susceptibility genes at risk loci. Here we evaluate *cis*-eQTL associations at 47 regions associated with HGSOC risk ($P \leq 10^{-5}$). For three *cis*-eQTL associations ($P < 1.4 \times 10^{-3}$, $FDR < 0.05$) at 1p36 (*CDC42*), 1p34 (*CDCA8*) and 2q31 (*HOXD9*), we evaluate the functional role of each candidate by perturbing expression of each gene in HGSOC precursor cells. Overexpression of *HOXD9* increases anchorage-independent growth, shortens population-doubling time and reduces contact inhibition. Chromosome conformation capture identifies an interaction between rs2857532 and the *HOXD9* promoter, suggesting this SNP is a leading causal variant. Transcriptomic profiling after *HOXD9* overexpression reveals enrichment of HGSOC risk variants within *HOXD9* target genes ($P = 6 \times 10^{-10}$ for risk variants ($P < 10^{-4}$) within 10 kb of a *HOXD9* target gene in ovarian cells), suggesting a broader role for this network in genetic susceptibility to HGSOC.

Correspondence and requests for materials should be addressed to S.A.G. (email: simon.gayther@med.usc.edu).
[#]A full list of authors and their affiliations appears at the end of the paper.

Genome-wide association studies (GWAS) have identified hundreds of common single nucleotide polymorphisms (SNPs) associated with cancer predisposition. However, the functional role of these genetic risk variants in disease biology and the target cancer susceptibility genes have been described for only a handful of risk regions^{1–5}. Approximately 90% of risk-associated alleles lie within non-protein coding regions of the genome, suggesting that some reside within regulatory elements that influence the expression of target genes. In support of this, common risk variants often coincide with regulatory biofeatures, including transcription factor-binding sites and regions of active chromatin, such as transcriptional enhancers^{4,6–8}.

Epithelial ovarian cancer (EOC) has a major heritable component, a proportion of which is due to common low-penetrance-susceptibility alleles. High-grade serous ovarian cancer (HGSOC) accounts for about 60% of all invasive EOC cases. Eleven common variant risk loci have so far been identified HGSOC using GWAS and replication analyses^{5,9–14}. While it is estimated that hundreds of additional risk variants are likely to exist, their identification in the future will be challenging because of the limitations in sample size restricting the power to detect genetic associations at genome-wide levels of significance. One approach to identify additional HGSOC risk alleles may be to use biological and functional information to provide additional evidence for risk associations in regions that are sub-genome-wide significant in genetic association studies.

Expression quantitative trait locus (eQTL) analysis is a straightforward approach to the identification of candidate susceptibility genes at risk loci. The goal is to identify allelic variants associated with gene expression on the basis that a proportion of transcripts are under genetic control. A transcript that is correlated with a risk variant in a relevant tissue or cell type represents a strong candidate susceptibility gene. eQTL analyses have recently identified candidate susceptibility genes for multiple cancer types including breast, prostate, lung and colorectal cancers^{3,15–17}. However, rarely have functional studies been performed to validate the role of these candidate genes.

In the current study, we evaluate whether eQTL analysis performed in primary HGSOCs can identify candidate ovarian cancer susceptibility genes at genomic regions showing evidence of susceptibility to HGSOC (P value for association $< 1 \times 10^{-5}$). We aimed to establish if eQTL analyses could provide additional biological evidence supporting putative susceptibility loci that have so far failed to reach genome-wide significance. Having identified significant *cis*-eQTL associations, we evaluate the role of candidate genes in the early stage development of HGSOC through targeted perturbation of candidate gene expression in two HGSOC precursor cell types and use chromosome conformation capture assays to identify physical interactions between a target gene and risk-associated SNPs. Finally, we use transcriptomic profiling to identify downstream targets of validated susceptibility genes, to identify common biological pathways associated with neoplastic development, and to provide functional evidence supporting additional potential HGSOC susceptibility loci.

Results

Risk-associated variants in high-grade serous ovarian cancer.

Genetic association analyses were performed using data from the Ovarian Cancer Association Consortium (OCAC) case-control studies^{5,9–14}. Genotype data were available for 15,397 women of European ancestry, diagnosed with invasive epithelial EOC, 9,608 of whom were diagnosed with serous EOC and 30,816

controls. These were from 43 studies from 11 countries that were part of several GWAS and the Collaborative Oncological Gene-environment Study (COGS) genotyping project^{9,18,19}. A meta-analysis of these data identified 47 susceptibility regions associated with HGSOC risk at a statistical threshold of $P < 10^{-5}$ (Supplementary Table 1). Eleven of these risk loci reached genome-wide levels of significance ($P \leq 5 \times 10^{-8}$) (refs 5,9–14).

Identifying *cis*-eQTL associations at HGSOC risk loci. Using profiles of gene expression, somatic copy number variation and methylation available for 339 primary HGSOCs from The Cancer Genome Atlas (TCGA) project, we evaluated determinants of gene expression in ovarian cancer. Copy number variation explains 14% and methylation 4.1% of variation in gene expression. We then measured the contribution of *cis*-expression quantitative trait loci, adjusting for somatic copy number variation and CpG methylation as previously described¹⁵. For these analyses we defined *cis*- as a 250-kb region spanning each SNP. The *cis*-eQTL-based analysis explained a further 0.25% of the variation in gene expression in HGSOCs. From 906,600 variants on the Affymetrix SNP6.0 arrays, this represents 592 eQTL associations with a false discovery rate (FDR) < 0.1 .

Next, we restricted our analyses to SNPs located at the 47 HGSOC risk loci ($P < 10^{-5}$). We identified four statistically significant eQTL associations: these associations were between rs711830 and *HOXD9* at 2q31 ($P = 5.8 \times 10^{-4}$, FDR = 0.03, Wald test); rs2268177 and *CDC42* at 1p36 ($P = 8.4 \times 10^{-13}$, FDR = 9.1×10^{-11} , Wald test); rs12023270 and *CDCA8* at 1p34 ($P = 1.4 \times 10^{-3}$, FDR = 0.05, Wald test); and rs6026496 and *GNAS* at 20q13 ($P = 3.3 \times 10^{-3}$, FDR = 0.09, Wald test). Of these, only rs711830 at 2q31 locus is associated with HGSOC at genome-wide significance ($P = 9.0 \times 10^{-14}$). For the remaining three loci the associations were borderline genome-wide significant: $P = 6.8 \times 10^{-7}$ at 1p36, $P = 1.4 \times 10^{-7}$ at 1p34 and $P = 5.1 \times 10^{-7}$ at 20q21. These data are summarized in Fig. 1a and Table 1.

Using quantitative PCR with reverse transcription (RT-qPCR) analysis we quantified expression of *HOXD9*, *CDC42* and *CDCA8* in ovarian cancer cell lines ($N = 14$) and ovarian ($N = 6$) and fallopian ($N = 3$) epithelial cells (Fig. 1b). *CDC42* was expressed in all samples with highest expression levels observed in cancer cell lines ($P < 0.028$). *HOXD9* expression was detected in ~80% of ovarian cancer cell lines and all normal ovarian epithelial cell lines, but was absent in the normal fallopian tube epithelial cell lines. *CDCA8* was expressed by all three cell types, and was significantly lower in ovarian epithelial cells compared with ovarian cancer cells ($P = 5.0 \times 10^{-4}$) and fallopian epithelial cells ($P = 2.0 \times 10^{-3}$). Figure 2 illustrates each genomic region, the location of all candidate functional SNPs and the expression of all of the genes in the region profiled in four ovarian cancer precursor cell lines using RNA sequencing.

Functional validation of candidate susceptibility genes.

We evaluated the functional effects of perturbing the expression of the top three *cis*-eQTL target genes (FDR < 0.05)—*CDC42*, *CDCA8* and *HOXD9*—in cell line models of the early stages of neoplastic transformation of HGSOC. Each gene was evaluated in the two cell types that are proposed to be the precursors of HGSOC; fallopian tube secretory epithelial cells and ovarian surface epithelial cells. Both cell lines were engineered to be deficient in p53 signalling, since this event occurs in almost all HGSOCs^{20,21}. Fallopian tube cells were immortalized by expression of *TERT* followed by short hairpin RNA (shRNA)-mediated knockdown of p53 and expression of the CDK4^{R24C} inhibition-resistant mutant CDK4 allele (FT246-shp53-R24C)²².

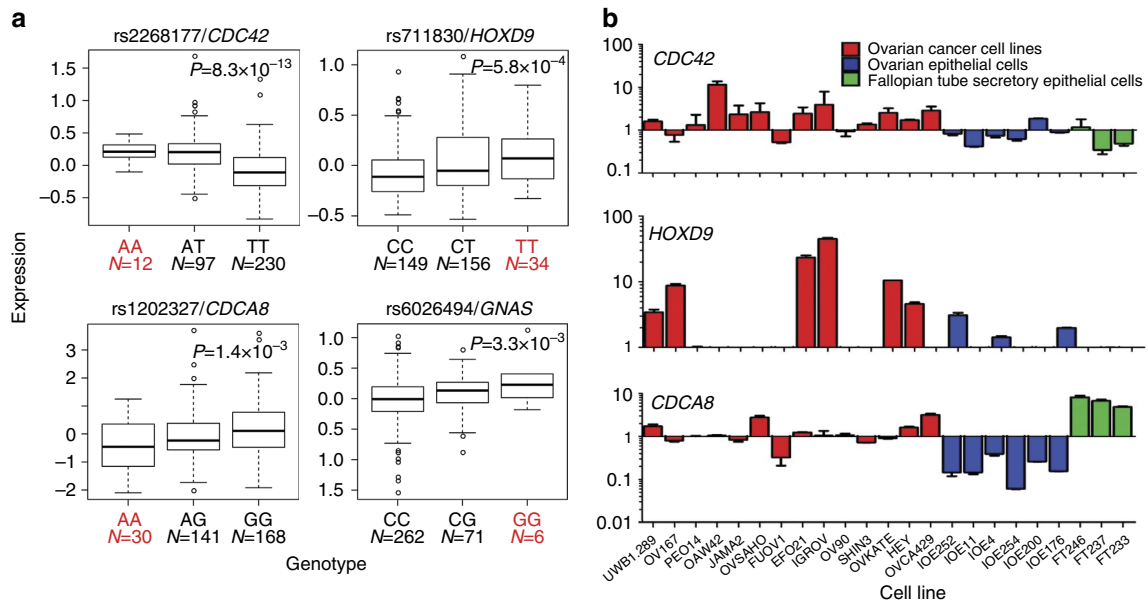


Figure 1 | eQTL analyses identify candidate genes at HGSOc risk loci. (a) *CDC42* at 1p36, *HOXD9* at 2q31, *CDCA8* at 1p34 and *GNAS* at 20q13. Genotypes associated with increased risk are indicated in red font. On the boxplots the horizontal line indicates the median, the box indicates the first to third quartile of expression and whiskers indicate $1.5 \times$ the interquartile range. **(b)** Analysis of the expression of three genome-wide significant genes in 14 ovarian cancer cell lines (predominantly of high-grade serous histology), six TERT-immortalized ovarian epithelial (IOE) cell lines and three TERT, shRNA-p53 and mutant CDK4 immortalized fallopian tube (FT) epithelial cell lines.

Table 1 | Risk and eQTL associations in serous ovarian cancer.

Locus	Risk associations				eQTL associations					r^2
	rsID	OR	P value (1 df)	EAF	rsID	Gene	Stat	Unadjusted P value	FDR	
2q31	rs6755777	1.15	8.95×10^{-14}	0.68	rs711830	<i>HOXD9</i>	3.48	5.82×10^{-4}	0.03	0.99
1p36	rs72665317	0.89	6.83×10^{-7}	0.16	rs2268177	<i>CDC42</i>	-7.46	8.40×10^{-13}	9.07×10^{-11}	0.88
					rs7412010	<i>CDC42</i>	7.38	1.36×10^{-12}	9.07×10^{-11}	0.78
1p34	rs4335340	0.90	1.37×10^{-7}	0.25	rs12023270	<i>CDCA8</i>	3.22	1.41×10^{-3}	0.05	0.61
20q13	rs6026494	1.16	5.07×10^{-7}	0.11	rs6026494	<i>GNAS</i>	2.96	3.28×10^{-3}	0.09	1.00

EAF, effect allele frequency; OR, odds ratio; Stat, T-statistic.
 r^2 values between risk SNP and eQTL SNP are from 1000 Genomes Phase 1 EUR population. Risk associations from an OCAC-only analysis.

Ovarian surface epithelial cells were immortalized with *TERT* alone²³ after which we generated a p53-deficient model by stably expressing a dominant negative p53 allele (IOE11-DNp53). In the latter model, loss of functional p53 signalling was confirmed using *in vitro* assays: upregulation of p21 following exposure to ionizing radiation was attenuated, and population-doubling times were reduced in cells expressing the DNp53 construct (Supplementary Fig. 1).

For each cell type, we created isogenic models of candidate gene overexpression or knockdown, mimicking the trends in expression associated with the risk allele as defined by the eQTL associations. Thus, we stably overexpressed *CDC42* and *HOXD9* as C-terminal green fluorescent protein (GFP) fusion proteins, and downregulated *CDCA8* using pooled targeting shRNAs. Overexpression or knockdown of each gene was confirmed by RT-qPCR (Fig. 3a(i),b(i)). We confirmed expression of the fusion proteins for *CDC42* and *HOXD9* by fluorescence microscopy (Fig. 3a(ii),b(ii)). *CDC42* was detected throughout the cell, whereas *HOXD9* expression was restricted to the nucleus. We then evaluated the engineered cell lines for phenotypes that are indicative of neoplastic transformation and tumour development, specifically anchorage-dependent and -independent

growth, migration, invasion, apoptosis and DNA content (ploidy). The results of these analyses are shown in Fig. 3c–h.

Effects of *CDCA8* downregulation. Using lentiviral delivery of *CDCA8*-targeting shRNAs, *CDCA8* gene expression was knocked down by 78% in IOE11-DNp53 cells, and 85% in FT246-shp53-R24C cell lines compared with parental cells and cell lines expressing a non-targeting, scrambled (SCR) shRNA (IOE11-DNp53-shSCR and FT246-shp53-R24C-shSCR). Downregulation of *CDCA8* had no significant effect on anchorage-dependent or -independent growth, invasion or migration in either IOE11-DNp53 or FT246-shp53-R24C cells. However, using propidium iodide staining we observed a 2.2-fold increase in the proportion of aneuploid cells in IOE11-DNp53-shCDCA8 cultures compared with IOE11-DNp53-shSCR controls ($P=0.026$, two-tailed paired *t*-test) (Fig. 3c).

Effects of *CDC42* overexpression. IOE11-DNp53 and FT246-shp53-R24C engineered to overexpress *CDC42* showed 18- and 24-fold increase in *CDC42* expression, respectively, compared with non-transduced and GFP-transduced control cell lines

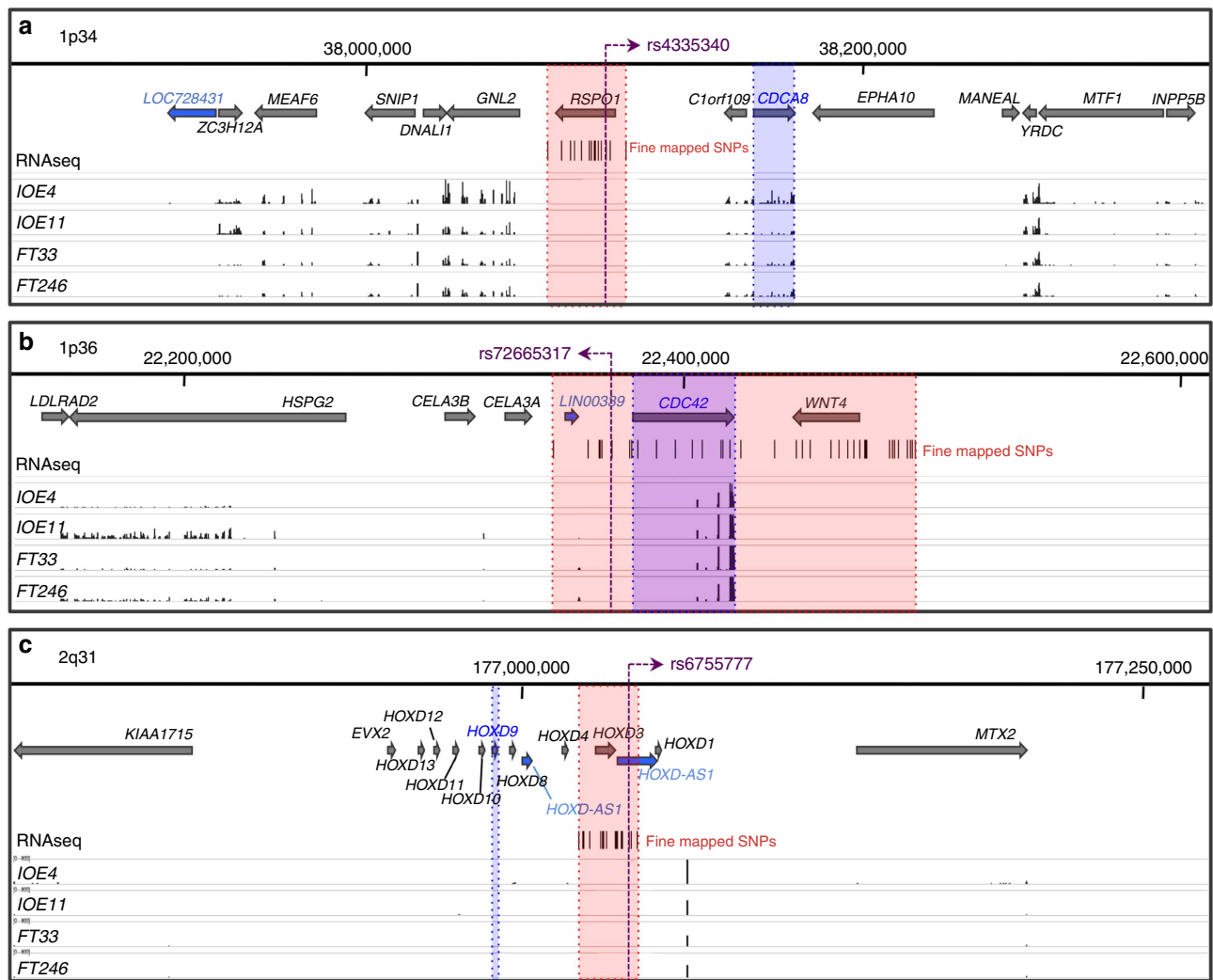


Figure 2 | Fine mapped HGSOc risk regions and gene expression in HGSOc precursor cells. A 0.5-Mb region spanning each risk locus is shown. The region defined by fine mapping is indicated by a red box, the candidate gene outlined by a blue box and candidate genes identified by eQTL analyses are indicated in bold blue font. The most significant SNP is indicated by a purple dashed line. RNAseq data for HGSOc precursor cells are shown. **(a)** At the 1p34 locus, the risk SNPs cluster around the *RSP01* gene, but this gene is not expressed in IOE and fallopian tube (FT) cells. **(b)** At 1p36, the risk SNPs span a 145-kb window encompassing *LIN00339*, *CDC42* and *WNT4*. **(c)** At 2q31, the 19 risk SNPs cluster around *HOXD3*, ~45kb telomeric to *HOXD9*.

(IOE11-DNp53-GFP and FT246-shp53-R24C-GFP). Overexpression of *CDC42* was associated with a 20% reduction in migration ($P=0.040$) compared with IOE11-DNp53-GFP and IOE11-DNp53 control cells (Fig. 3d) but no other cellular phenotypes were affected in this model. However, FT246-shp53-R24C-*CDC42* cells had significantly shorter population-doubling times in anchorage-dependent growth assays (Fig. 3e).

Effects of *HOXD9* overexpression. *HOXD9* expression was undetectable in IOE11-DNp53 and FT246-shp53-R24C cells and GFP-transduced cells; but after lentiviral infection of a *HOXD9* construct, IOE11-DNp53 cells and FT246-shp53-R24C cells showed robust *HOXD9* expression. IOE11-DNp53-*HOXD9* cells demonstrated a 4.2-fold increase in anchorage-independent growth relative to parental cells and control cells expressing GFP only ($P=0.026$, two-tailed paired *t*-test, Fig. 3f). FT246-shp53-R24C-*HOXD9* cells exhibited significantly shorter population-doubling times than control cells (Fig. 3e), and by light microscopy, we observed that *HOXD9*-expressing cells tended to become more tightly packed into the monolayer. We

therefore performed contact inhibition assays, which revealed that these cells were more proliferative under conditions of high cell density, compared with control FT246-shp53-R24C-GFP cells (Fig. 3g). Finally, cell cycle analyses in diploid IOE11-DNp53-*HOXD9* cells showed a ~78% reduction in the proportion of apoptotic cells relative to GFP-expressing controls ($P=0.034$, two-tailed paired *t*-test, Fig. 3h).

Interactions between 2q31 risk SNPs and *HOXD9*. Because of the strong neoplastic phenotypes associated with overexpression of *HOXD9*, we evaluated the 2q31 locus in more detail. While the SNP with the strongest association is the most obvious candidate for being the causal variant in this region, other correlated SNPs with slightly weaker associations may be the true causal variant. On the basis of a comparison of the log likelihoods from the association testing for each SNP with the most significant SNP there are 19 SNPs that are candidates for being the causal variant at odds of 100:1 or better (Fig. 4). We created a chromosome conformation capture (3C) interaction map of the region, systematically testing for interactions between the *HOXD9* promoter

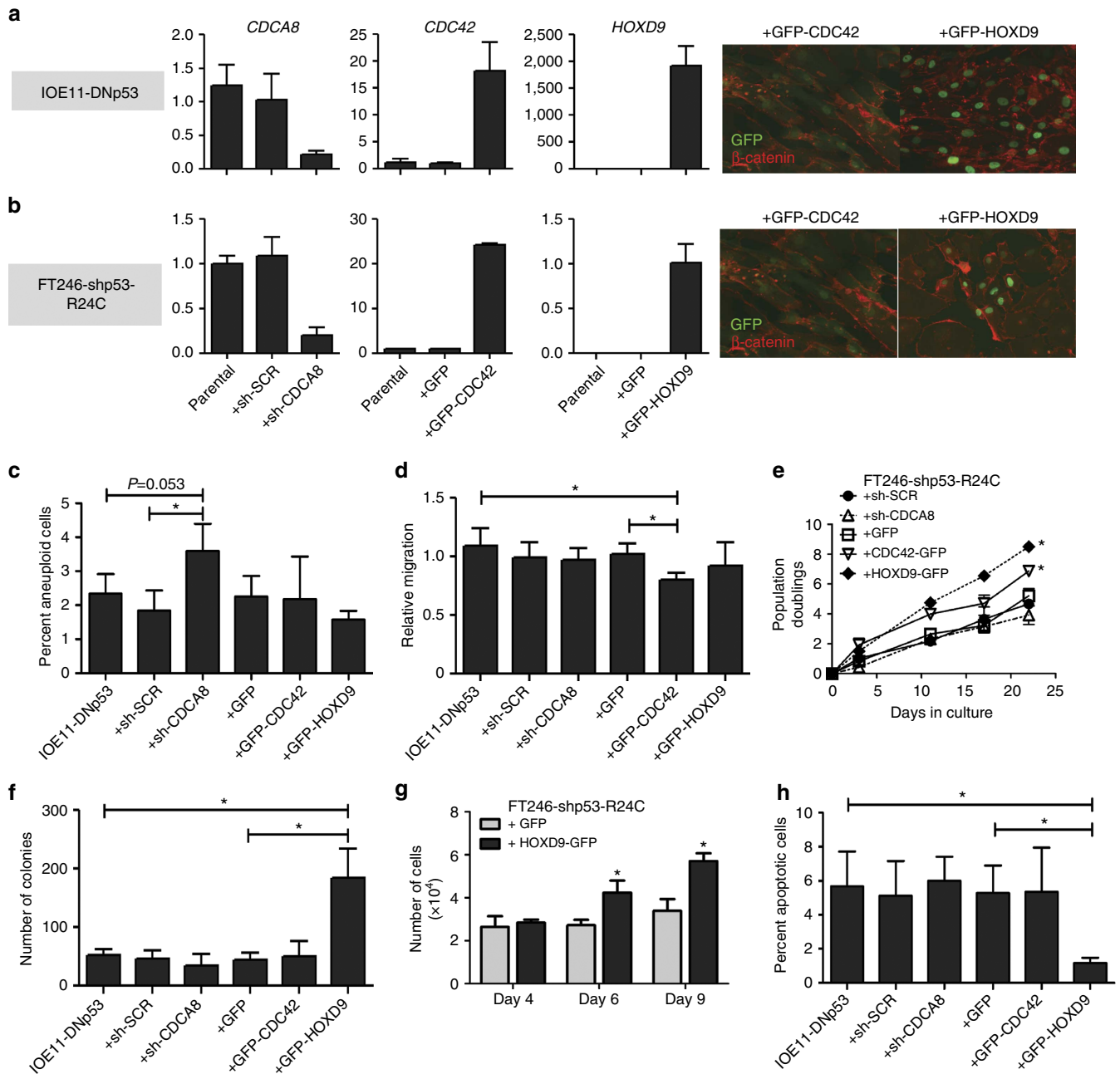


Figure 3 | Characterization of overexpression and knockdown models of eQTL genes. ShRNAs targeting *CDCA8* were used to knockdown *CDCA8* expression and C-terminal GFP fusion proteins of *CDC42* and *HOXD9* were delivered by lentiviral transduction to overexpress these two genes in (a) IOE11-DNp53 cells and (b) FT246-shp53-R24C cells. (left panels) Gene expression measured by RT-qPCR; (right panels) protein expression visualized by fluorescence microscopy, *CDC42* expression is detected throughout the cell, whereas *HOXD9* expression is exclusively nuclear. (c) Quantification of aneuploid cell population (> 4N) following perturbation of each gene, in IOE11-DNp53 models. (d) Overexpression of *CDC42* is associated with reduced migration in IOE-DNp53. (e) Growth curve analysis of anchorage-dependent growth, cells expressing *CDC42* and *HOXD9* have significantly shorter population-doubling times. (f) Overexpression of *HOXD9* is associated with increased colony formation in anchorage-independent growth assays in IOE11-DNp53. (g) Contact inhibition assay, *HOXD9*-expressing FT246-shp53-R24C cells are more proliferative under conditions of high cell density, compared with GFP-expressing controls. (h) Overexpression of *HOXD9* is associated with reduced apoptosis. Data shown represent mean \pm s.d. of three independent experiments. * $P < 0.05$, two-tailed paired t-test.

(anchor) and 11 restriction fragments covering the 19 risk SNPs (targets). We observed an interaction between the region containing rs2857532 and the *HOXD9* promoter in two different epithelial ovarian cancer cell lines (Fig. 4). There was no evidence of interaction between the *HOXD9* promoter and any of the other 18 risk-associated variants at this locus. Using the Match algorithm and TRANSFAC matrices we identified transcription factors that differentially bind to the reference (A) and alternative

(G) alleles of the rs2857532 variant. The alternative allele creates a binding site for HOMEZ, BEN and RelA-p53 transcription factors (Table 2). Analysis of TCGA data confirmed that these three transcription factors are expressed in HGSOc. These transcription factors do not bind the reference allele and thus represent candidate transcription factors that may function upstream of rs2857532 to modulate *HOXD9* expression during ovarian cancer development.

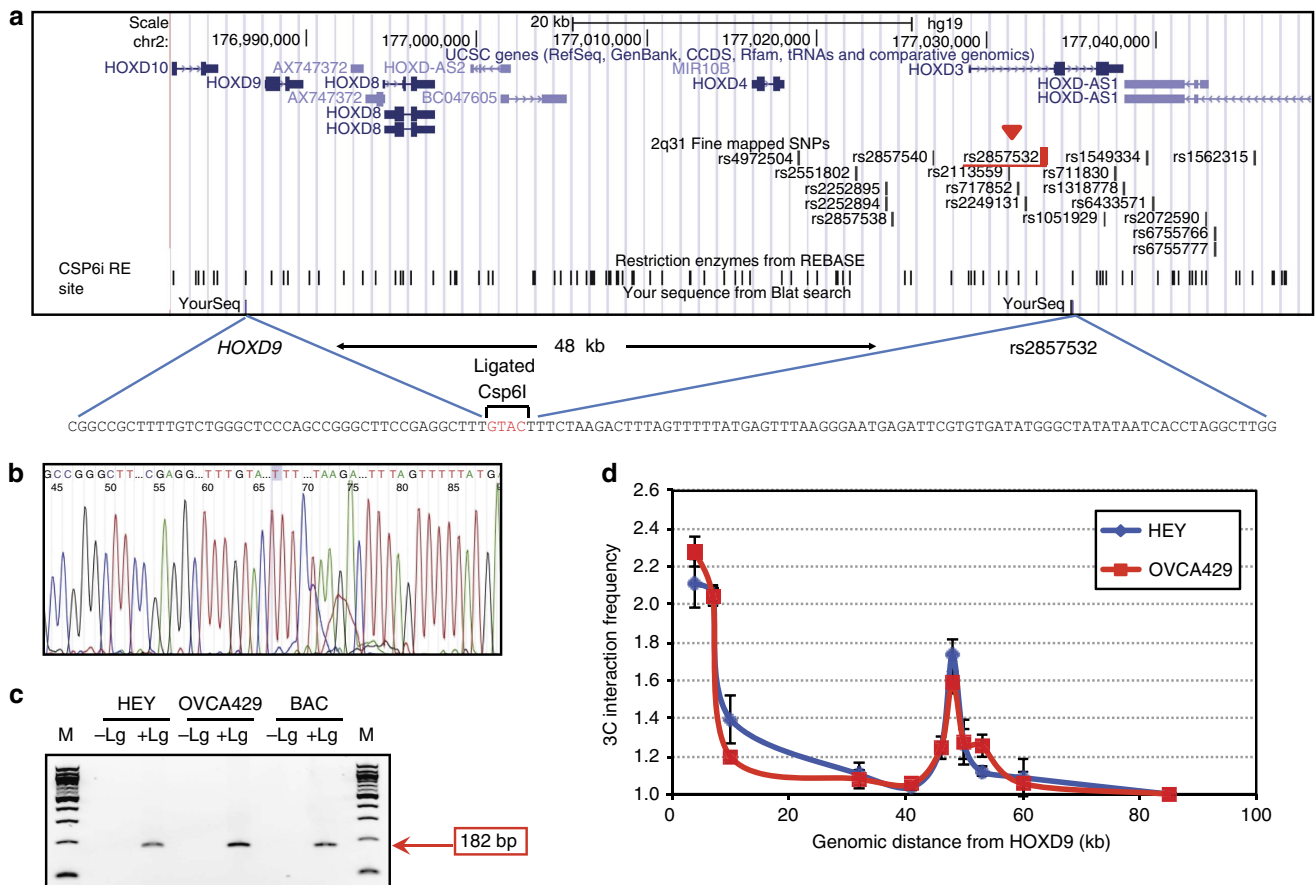


Figure 4 | 3C Analysis at the 2q31 locus. We systematically tested for interactions between the *HOXD9* promoter and risk SNPs. We identified an interaction between a region containing rs2857532 and the *HOXD9* promoter. (a) Map of the genomic region, showing the *HOXD* gene cluster and the fine mapped risk SNPs. (b) The interaction was verified by sequencing. (c) Agarose gel electrophoresis of ligation products. There was no ligation product in the absence of ligase (Lg). M, 100-bp molecular weight marker. (d) Quantification of 3C interaction frequencies between a constant fragment containing the *HOXD9* promoter and each target fragment. In both cell lines, a peak of interaction is observed with the fragment containing the rs2857532 variant located 48 kb away from the constant fragment. The y axis refers to semi-quantitative PCR products from 3C libraries in both cell lines normalized by each interrogated ligation PCR product using BAC control template. The error bars represent the s.e.m.

Table 2 | TRANSFAC analysis of predicted allele-specific transcription factor binding at rs2857532.

Matrix	Factor name	Strand	Core score	Matrix score	Sequence
V\$HOMEZ_01	Homez	(-)	0.888	0.674	aacaggAG C GAAattcc
V\$BEN_01	BEN	(+)	0.877	0.878	GAG C Gaaa
V\$RELA_Q6	RelA-p65	(-)	1	0.928	agc g aaATTCCa

Analyses were performed using the Match tool. Only transcription factors (TFs) predicted to uniquely bind to the risk (G) allele are shown. The position of the polymorphism within the TF-binding sequence is shown in bold font.

Downstream targets of HOXD9. RNA sequencing was used to profile transcriptomic changes resulting from HOXD9 overexpression in IOE11-DNp53 and FT246-shp53-R24C cells; expression of 10 target genes was validated by RT-qPCR (Supplementary Fig. 2). Transcriptional networks downstream of risk-associated genes have themselves been shown to regulate germline susceptibility in other diseases^{24,25}. Therefore, we systematically evaluated HOXD9 targets for association with HGSOc risk using summary results from the meta-analysis (Methods). We identified 128 and 34 genes in IOE11-DNp53 and FT246-shp53-R24C, respectively, as cell-specific HOXD9 targets by applying a strict cutoff for differential expression (FDR < 0.1, fold change > ± 2; *HOXD9* excluded). First, we compared the

distribution of *P* values for association with HGSOc risk for SNPs in HOXD9 target genes and their flanking regions with the distribution in all other genes and their corresponding flanking regions using two-sample Kolmogorov–Smirnov (K–S) tests²⁶. Flanking regions of 10, 25, 50 and 100 kb up- and downstream of each gene were tested under the assumption that HOXD9 binds to regulatory elements near its target genes. For all flanking intervals considered, SNP *P* values in and near HOXD9 targets were significantly smaller or more associated with HGSOc risk (K–S test *P* value: 4×10^{-3} to 3.9×10^{-6} for ovarian targets and 1×10^{-3} to 2.4×10^{-7} for fallopian targets; Table 3).

Next, we evaluated whether HOXD9 targets were enriched for HGSOc risk signals at three specific sub-genome-wide SNP

P value thresholds of $P < 10^{-3}$, $< 10^{-4}$ and $< 10^{-5}$ compared with the proportion of such associations in all other genes. For all flanking regions as before, we observed significant enrichment for associations at the $P < 10^{-3}$ and $< 10^{-4}$ thresholds (Fisher’s exact *P* value range: ovarian targets: 6×10^{-10} to 1.2×10^{-31} and fallopian targets: 3.4×10^{-9} to 1.1×10^{-21} ; Table 3). At the $P < 10^{-5}$ threshold we only observed a significant enrichment for fallopian targets when flanking regions up to 100 kb were considered ($P = 5 \times 10^{-3}$). Finally, we adopted a complementary approach and used gene set enrichment analysis (GSEA) to test the association of the ovarian and fallopian HOXD9 target gene sets (128 and 34 genes, respectively) with HGSOC risk. All genes in the genome with SNP coverage (22,577 genes) were first ranked based on the *P* value of the most significant HGSOC risk SNP in each gene and its flanking interval (± 50 kb; Methods). On running GSEA with 10,000 permutations, the ovarian HOXD9 target gene set was significantly associated with HGSOC risk (GSEA $P = 0.017$) but fallopian targets failed to reach significance (GSEA $P = 0.094$). Thus, genes ranked higher in the GWAS meta-analysis were significantly over-represented among the 128 HOXD9 ovarian targets, in particular. All three approaches consistently demonstrated that HOXD9 target genes in ovarian cells were enriched for HGSOC risk variants.

Guided by the principle that disease genes are likely to cluster in functionally meaningful networks²⁷, we also conducted network-based pathway analyses of all genes that showed at least twofold change in transcript abundance after HOXD9 overexpression without considering the FDR threshold applied in the previous analyses (IOE11-DNp53: 2,357 genes; FT246-shp53-R24C: 1,972 genes, analysed separately). We assigned priority to genes in each downstream target list that are known to interact with each other biologically using jActiveModules²⁸, a method that also takes into account the corresponding *P* values for differential expression after HOXD9 perturbation. This identified a highly interconnected ovarian module or network of 94 genes and 272 interactions and a fallopian network of 269 genes and 962 interactions. Both the ovarian and fallopian networks identified were significantly enriched (FDR < 0.05 and $> 5\%$ pathway involvement) for the focal adhesion and transforming growth factor-beta signalling pathways from Kyoto Encyclopedia of Genes and Genomes (KEGG)²⁹ and Ingenuity pathway databases (Table 4).

Discussion

The main goals in the functional characterization of GWAS risk loci are to identify target susceptibility genes and the causal

Table 3 | Enrichment of HGSOC risk variants in regulatory regions of HOXD9 target genes.

Cell type	Gene \pm extended boundaries	Ovarian HOXD9 target genes* (<i>n</i> = 128)				Fallopian HOXD9 target genes* (<i>n</i> = 34)			
		10 kb	25 kb	50 kb	100 kb	10 kb	25 kb	50 kb	100 kb
K-S test		4.2×10^{-4}	0.004	0.006	3.9×10^{-6}	0.001	3.7×10^{-6}	2.4×10^{-7}	5×10^{-6}
Fisher’s exact test threshold	$P < 10^{-3}$	4.9×10^{-10}	7.9×10^{-14}	1.9×10^{-18}	5.2×10^{-14}	1.1×10^{-15}	3×10^{-11}	4.4×10^{-13}	3.4×10^{-9}
	$P < 10^{-4}$	6×10^{-10}	8.5×10^{-14}	1.2×10^{-20}	1.2×10^{-31}	5×10^{-20}	8.5×10^{-17}	1.1×10^{-21}	3.8×10^{-16}
	$P < 10^{-5}$	No SNPs	No SNPs	No SNPs	No SNPs	0.876	0.779	0.178	0.005

*FDR < 0.1 for differential expression and fold change $> \pm 2$ after HOXD9 overexpression.

Table 4 | Pathway analysis of HOXD9 target gene networks.

Source	Pathway*	Ovarian HOXD9 network		Fallopian HOXD9 network	
		% of pathway involved	FDR	% of pathway involved	FDR
KEGG	Focal adhesion	14	1.9×10^{-4}	9	1.9×10^{-7}
	TGF-beta signalling pathway	9	2.3×10^{-3}	11	5.1×10^{-3}
Ingenuity	FAK signalling	5	6.9×10^{-3}	12	6.5×10^{-6}
	ERK5 signalling	5	1.8×10^{-2}	13	3×10^{-5}
	RAR activation	5	1.9×10^{-4}	7	6×10^{-5}
	TGF-beta signalling	7	2.4×10^{-4}	9	2.1×10^{-4}
	Hepatic fibrosis/hepatic stellate cell activation	8	4×10^{-12}	6	5.5×10^{-4}
	Cell cycle: G1/S checkpoint regulation	8	4.6×10^{-4}	9	1.1×10^{-3}
	Chronic myeloid leukaemia signalling	6	2.7×10^{-4}	8	1.3×10^{-3}
	Pancreatic adenocarcinoma signalling	5	2.4×10^{-3}	7	2.5×10^{-3}
	Virus entry via endocytic pathways	6	1.2×10^{-3}	7	4.3×10^{-3}
	Growth hormone signalling	6	3.5×10^{-3}	7	6.6×10^{-3}
	Caveolar-mediated endocytosis signalling	7	6×10^{-4}	7	7.7×10^{-3}
	Cyclins and cell cycle regulation	6	7.2×10^{-4}	6	1.1×10^{-2}
	Antiproliferative role of TOB in T-cell signalling	12	3×10^{-3}	12	1.2×10^{-2}
	Semaphorin signalling in neurons	6	1.2×10^{-2}	8	1.3×10^{-2}
	Remodelling of epithelial adherens junctions	6	3.4×10^{-3}	6	2.6×10^{-2}
VDR/RXR activation	5	5.1×10^{-3}	5	3.9×10^{-2}	

TGF, transforming growth factor.
*Only pathways with FDR < 0.05 and $> 5\%$ genes involved in both ovarian and fallopian analysis reported.

SNP(s) at risk loci. eQTL analysis represents one of the most straightforward approaches to the identification of the putative target genes at risk loci, and provides evidence of allele-specific functional effects for risk SNPs. We used data from HGSOCS from TCGA for eQTL analysis, and employed experimental models of early-stage disease to functionally validate the candidate genes we identified. Of 11 confirmed GWAS susceptibility loci identified for ovarian cancer, one contained a statistically significant eQTL association (*HOXD9*) at a $FDR \leq 0.1$. Two additional loci that were sub-genome-wide significant also contained significant eQTLs that coincided with risk SNPs (*CDC42* and *CDCA8*). For all three genes, at least one of the functional assays scored significantly, indicating they are the likely ovarian cancer susceptibility genes at these loci.

There may be several explanations why we did not identify eQTL associations at other loci. For example, we evaluated *cis*-eQTL associations for genes in a 500-kb region spanning the most significant risk SNP at each locus, since this threshold is expected to include the majority of eQTL associations³⁰. However, it is known that enhancers can interact with multiple genes, and it is also plausible that risk-associated SNPs regulate genes many megabases away, or even on a different chromosome (that is, *trans*-eQTL associations). Also, this study was based on eQTL analysis in tumour tissues. Somatic genetic heterogeneity could mask the presence of eQTL associations; but it may also be that genes influence tumour development at early stages of neoplastic development requiring eQTL analysis to be performed in relevant normal tissues or putative precursor lesions. Moreover, eQTL analysis, unlike GWAS, is currently limited to sample sizes in the hundreds and the 339 HGSOCS used in this study, while comprising the largest available data set of its kind, may not be powered to detect all eQTL signals. Our approach was based on the hypothesis that risk variants function through cell-autonomous signalling pathways in differentiated cells, but it is possible that microenvironmental or precursor cell populations could also be effectors of risk variants, or that eQTLs can only be detected in the presence of certain stimuli, such as steroid hormones. Finally, our approach does not detect non-eQTL mechanisms underlying risk associations, such as splice variants and base changes in non-coding RNAs.

At two of the eQTL loci (1p34 and 2q31) the genes in closest proximity to the most risk-associated SNP were not the target gene from eQTL analysis. This has also been observed for other complex traits⁸. Furthermore the three candidate genes we identified have not previously been implicated in ovarian cancer susceptibility. At 2q31 susceptibility SNPs lie within the *HOXD* gene cluster, a series of conserved DNA-binding proteins involved in development. Homeobox genes have been broadly implicated in the development of many solid tumours, promoting neoplastic development by regulating processes common to normal tissue development and carcinogenesis, such as proliferation, invasion, differentiation and apoptotic resistance³¹. *HOXD9* lies ~51 kb from the 19 risk-associated variants identified by fine mapping, which cluster around the *HOXD3* and *HAGLR* genes. This suggests that regulatory elements around *HOXD3/HAGLR* region regulate *HOXD9*. Using chromosome conformation capture (3C) assays we identified a putative interaction between one variant, rs2857532, and the *HOXD9* promoter, suggesting this SNP is a candidate causal variant regulating *HOXD9* expression at this locus. A recent study by Kelemen *et al.*³² reports that the 2q31.1 region is also a risk locus for the mucinous subtype of ovarian cancer with *HOXD9* the likely target susceptibility gene. Using 3C, Kelemen and colleagues also show that three regions, one of which harbours the rs2857532 risk SNP, interact with *HOXD9* in mucinous ovarian cancer cells indicating that there may be both

tissue specific differences and similarities in the regulation of *HOXD9* in the two different disease subtypes. Rs2857532 lies within intronic sequence of *HOXD3*, but does not coincide with enhancer marks in normal ovarian or fallopian cells, or in serous ovarian cancer cells³³. However, the risk allele of this SNP is predicted to create a binding site for two transcription factors implicated in early development: BEN, which is part of the TFII-I transcription factor family³⁴, and HOMEZ, a putative, sequence-specific DNA-binding protein that may regulate the expression of HOX genes during vertebrate development³⁵.

HOXD9 is a little-studied homeobox gene known to be involved in the development of gynecological organs³⁶ and mammary gland maturation during pregnancy and lactation³⁷. Previous reports indicate *HOXD9* may behave as an oncogene in glioma³⁸ and breast cancer³⁹. Consistent with this, in functional assays we showed that higher *HOXD9* expression reduced apoptosis, increased proliferation under conditions of high cell density and enhances ectopic proliferation of cells in the absence of attachment to a substrate. Analysis of downstream targets of *HOXD9* identified by overexpressing this gene in ovarian and fallopian *in vitro* models and performing genome-wide RNAseq profiling indicated several candidate genes that may be necessary for *HOXD9* to impart its neoplastic function. We tested these candidate genes for enrichment of HGSOCS risk associations using a battery of complementary methods encouraged by the observation that the breast cancer susceptibility gene *FGFR2* has been shown to act through downstream transcriptional networks involving other breast cancer risk loci²⁴. Notably, among the *HOXD9* ovarian targets enriched for modest ($P < 10^{-4}$) HGSOCS risk variants were *WNT5A*, *SYNE1* and *IGF2*. *WNT5A* and *SYNE1* were also the top two genes driving the GSEA signal for the *HOXD9* ovarian gene set. *WNT5A*, a member of the non-canonical Wnt signalling pathway, has been shown to exhibit context-dependent tumour suppressor activity by triggering cellular senescence and is prognostic in primary HGSOCS^{40,41}. Smaller studies from OCAC have previously suggested associations between variants in *SYNE1* and *IGF2* with HGSOCS risk but these have been significant only at sub-genome-wide levels^{42,43}. The emergence of these two genes in the present analysis further underscores the utility of integrating functional data to highlight genetic risk associations and the likely existence of shared biological mechanisms underlying polygenic susceptibility. Pathway analysis revealed impact on focal adhesion signalling with involvement of the collagen genes *COL3A1* and *COL12A1* after *HOXD9* overexpression in both ovarian and fallopian cells. Focal adhesions play a critical role in ovarian cancer cellular migration and invasiveness⁴⁴. Collectively, these findings further support the functional evidence indicating that *HOXD9* is the HGSOCS susceptibility gene at the 2q31 locus.

At 1p36, we identified *CDCA8* as the target gene. *CDCA8* (alternatively known as Borealin) is part of the chromosomal passenger complex that functions to properly align and segregate chromosomes during mitosis. Consistent with this role, knock-down of *CDCA8* expression in IOE-DNP53 resulted in an accumulation of aneuploid cells in the culture. This is also consistent with the genomic instability and aneuploidy that is often observed in HGSOCS, possibly arising from failure of chromosomal segregation during cell division. Finally, at 1p34, we identified *CDC42* as the putative target susceptibility gene. *CDC42* is a small Rho GTPase and well-known oncogene involved in migration, cellular polarity and proliferation, and is overexpressed in many cancers⁴⁵. Elevated expression of *CDC42* was associated with increased risk of HGSOCS, and overexpression of the gene was associated with shorter population-doubling times and reduced migration.

Identifying additional common variant susceptibility alleles for ovarian cancer will continue to be restricted by sample size for this uncommon cancer type. By using eQTL analysis to interrogate candidate susceptibility loci that are sub-genome-wide significant, we have found evidence for two additional HGSOc risk loci, 1p34 (*CDCA8*) and 1p36 (*CDC42*) gene. While these functional studies were ongoing, a meta-analysis of the OCAC genetic association results with the results of an equivalent analysis of modifiers of ovarian cancer risk in 15,252 *BRCA1* mutation carriers and 8,211 *BRCA2* mutation carriers was conducted by the Consortium of Investigators of Modifiers of *BRCA1/2* (ref. 19). This study identified six novel genome-wide significant risk loci for ovarian cancer, including the 1p34 and 1p36 loci described in the current study, thus validating our approach. In the meta-analysis, at 1p34 the most strongly associated SNP (rs58722170, 1.6×10^{-8} for all histological subtypes, 2.7×10^{-12} for serous) was correlated with the *cis*-eQTL SNP rs12023270 with $r^2 = 0.73$; at 1p36 the most strongly associated SNP (rs56318008, 7.6×10^{-9} for all histological subtypes, 5.7×10^{-8} for serous) was correlated with the top *cis*-eQTL SNP rs2268177 with $r^2 = 0.76$ (ref. 19).

In this study we evaluated the functional effects of candidate genes in ovarian and fallopian epithelial cells, because both cell types are predicted precursors of HGSOcs^{46,47}. It is of interest that we observed some differences in how each cell type responded to altering the expression of the three candidate genes. For example, ovarian epithelial cells were more readily transformed in soft agar assays compared with fallopian cells even though the FT246-shp53-R24C cells express one additional oncogenic element compared with IOE11-DNp53 (mutant CDK4). *HOXD9* target genes in ovarian cells were consistently more associated with HGSOc risk compared with fallopian *HOXD9* targets. One possible explanation for these differences is that, even though in both cell lines p53 signalling was deregulated, the mechanism by which p53 was deregulated differs between the two models. An alternative explanation is that HGSOc originates in only one of these epithelial cell types and this is reflected by the different phenotypic effects observed when perturbing susceptibility genes. There remains debate about the cellular origins of HSGOC. The data in this study suggest that ovarian epithelial cells are more prone to neoplastic transformation by susceptibility genes associated with HGSOc compared with fallopian tube epithelial cells, and that ovarian cell transcriptional networks play a greater role in polygenic risk component of HGSOc. These variations in molecular and phenotypic changes between cell types highlights the need to consider carefully the likely cell of origin for the disease under study when performing functional studies of risk loci identified by GWAS. Moreover, the heterogeneity in the phenotypic effects observed for the different genes reveal the importance of evaluating multiple phenotypes associated with neoplasia, as risk alleles could influence cellular transformation through a variety of mechanisms.

In summary, this study has demonstrated the power of eQTL analysis to identify candidate susceptibility genes associated with initiation and early stage development of HGSOc. In particular we show how biological information from the functional characterization of risk loci can be used to interrogate sub-genome-wide significant loci from GWAS for the identification of additional, novel risk loci for common multifactorial disease traits.

Methods

Genetic association analyses. *Summary of data sets.* Data were available for the stage 1 of three population-based EOC GWAS comprising a total of 4,366 cases and 9,124 controls^{9,18,19}. An additional 11,030 cases and 21,693 controls from 41 OCAC studies were genotyped using the iCOGS array. All duplicates were removed

from the analysis and overall, 43 studies from 11 countries provided data on 15,397 women of European ancestry, diagnosed with invasive epithelial EOC, 9,608 of whom were diagnosed with serous EOC and 30,816 controls from the general population. The quality control methods are described in full in the Supplementary File 1.

Imputation. We performed imputation separately for OCAC-iCOGS samples and each of the GWAS. We imputed variants from the 1000 Genomes Project data using the v3 April 2012 release as the reference panel. To improve computation efficiency we initially used a two-step procedure, which involved pre-phasing in the first step and imputation of the phased data in the second. We carried out pre-phasing using the SHAPEIT software⁴⁸. We then used the IMPUTE version 2 software⁴⁹ for the subsequent imputation for all studies. To perform the imputation we divided the data into segments of ~5 Mb each. We excluded SNPs from the association analysis if their imputation accuracy was $r^2 < 0.25$ or their minor allele frequency was < 0.005 . The number of successfully imputed SNPs by minor allele frequency is shown in Supplementary File 1.

Data analysis. All analyses were restricted to subject of European intercontinental ancestry. To be able to control for population substructure we used a set of unlinked markers to perform principal components analysis. The three GWAS and the COGS data sets were analysed separately using different sets of markers. To enable this analysis on very large samples we used an in-house programme written in C++ using the Intel MKL libraries for eigenvectors (available at <http://ccge.medschl.cam.ac.uk/software/>). Unconditional logistic regression treating the number of alternate alleles carried as an ordinal variable (log-additive, co-dominant model) was used to evaluate the association between each SNP and ovarian cancer risk. A likelihood ratio test was used to test for association, and per-allele log odds ratios and 95% confidence limits were estimated. The likelihood ratio test has been shown to have greater power than alternatives such as the Wald test and score test for rare variants⁵⁰. The logistic regression model was adjusted for study and population substructure by including study-specific indicators and a variable number of eigenvalues from the principal components analyses. The number of principal components was chosen based on the position of the inflexion of the principal components scree plot. Two principal components were included in the analysis of the UK and US GWAS data sets, one was used for the Mayo GWAS and five were used for the COGS-OCAC data set. Results from the three GWAS and COGS were combined using fixed-effect inverse variance weighted meta-analysis.

eQTL analysis. We chose 47 candidate HGSOc risk loci from previous GWAS studies with P value $< 1 \times 10^{-5}$ (Supplementary Table 1). For each risk SNP, correlated variants with $R^2 > 0.7$ in the 1000 Genomes CEU population were identified. The germline genotypes of 443 ovarian serous cystadenocarcinoma samples were downloaded from TCGA data portal. We selected 339 samples with Caucasian ancestry using EIGENSTRAT⁵¹. Matched tumour gene expression profiles, somatic copy number and CpG methylation data of these samples were obtained from the same source and used to adjust the expression profiles for somatic copy number changes and CpG methylation variation described as follows^{15,16}. Briefly we adjusted the expression levels for each gene using matched information of somatic copy number and CpG methylation using linear models. To perform the eQTL analysis, we took germline genotypes of SNPs/proxies as independent variables and adjusted expression levels as traits. The association between genotype and gene expression of genes within 250 kb either side of the corresponding variant was evaluated based on the significance of linear regression coefficients. To control for multiple testing, we calculated the FDR from the test P values using Benjamini-Hochberg method and called significant associations with a maximal FDR of 0.1.

Cell lines and cell culture. We have previously reported the generation of the IOE11 TERT-immortalized ovarian surface epithelial cell line²³. IOE11 cultured in NOSE-CM⁵². To generate a p53-deficient line, IOE11 cells were transfected with T7-p53DD-pcDNA3 (Addgene plasmid number 25989) and positive clones (IOE11-DNp53) selected with $125 \mu\text{g ml}^{-1}$ G418. Loss of p53 function was confirmed by irradiating IOE11-DNp53 and control cells with 6 Gy ionizing radiation and immunoblotting cell lysates for p21 expression (sc-397, 1:1,000 dilution, Santa Cruz Biotechnology) 24 h later. Immortalized fallopian tube secretory epithelial cell lines (FT33-shp53-R24C and FT246-shp53-R24C) have been previously described²² and were cultured in DMEM/F12 (Sigma) supplemented with 2% Ultrosor G (Crescent Chemicals) or 10% fetal bovine serum (FBS; Hyclone, Thermo Fisher). For 3C, HEY cells were grown in RPMI containing 10% FBS and OVCA429 cells were cultured in EMEM supplemented with 10% FBS, $1 \times$ non-essential amino acids and $1 \times$ sodium pyruvate. All cell lines used in this study were routinely tested for *Mycoplasma* infection using a *Mycoplasma*-specific PCR, and, for cell line authentication, short tandem repeats profiled using the PowerPlex16HS Assay (Promega, University of Arizona Genetics Core).

Viral transductions. A set of six *CDCA8*-targeting shRNAs and one scrambled shRNA (SCR) cloned into pGIPz (RHS4531-EG55143, Dharmacon) were co-transfected with p8.91 and pMD.G into HEK293Ts to produce lentiviral supernatants, which were collected 48 h after removal of the transfection media.

Lentiviral GFP fusion constructs were purchased from Genecopoeia: Lv122-CDC42-GFP and Lv122-HOXD9-GFP (and a GFP control; Lv-GFP) and also used to make lentiviral supernatants. IOE11-DNp53 and FT246-shp53-R24C cells were transduced with lentiviral supernatants overnight, and for IOE11-DNp53, positive cells were selected using 400 ng ml^{-1} puromycin.

Functional assays. For anchorage-dependent growth assays, 0.1×10^6 cells were plated in triplicate and passaged when 80% confluent. Cells were enumerated at each passage and population doublings calculated with the following formula: $\text{population doubling} = \log(\text{total cell number at each passage/initial cell number}) / \log 2$. Anchorage-independent growth assays were performed by suspending 0.02×10^6 cells in media containing 0.33% Noble agar and 1 mg ml^{-1} bacto-peptone (both Sigma); this mixture was overlaid onto a base layer of medium containing 0.6% Noble agar per 1 mg ml^{-1} bacto-peptone. Cells were cultured for 4 weeks, stained with 1% *p*-iodonitrotetrazolium violet (Sigma) and counted using phase microscopy. Migration and invasion kits (Trevigen) were performed following the manufacturer's instructions. Contact inhibition assays were performed by plating 0.02×10^6 cells per well in 12-well plates and enumerating cells at indicated timepoints. For propidium iodide staining: 0.3×10^6 cells were plated in triplicate and incubated for 48 h. Cells were washed twice with PBS and fixed in 70% ice-cold ethanol. On fixation cells were washed twice with PBS and stained with $50 \mu\text{g ml}^{-1}$ propidium iodide staining solution (Calbiochem) combined with $10 \mu\text{g ml}^{-1}$ RNase A (Invitrogen). Cells were stained for 3 h at 4°C in the dark. Cell cycle status was examined using the LSR II flow cytometer (Becton Dickinson) and data were analysed using FlowJo software (Tree Star, Inc.).

Chromosome conformation capture (3C). 3C was performed as follows⁷. Briefly, HEY and OVCA429 EOC cells were collected by trypsinisation, and 10 million cells were fixed with 1% formaldehyde for 10 min. Cells were lysed (10 mM Tris-HCl (pH 8), 10 mM NaCl and 0.2% Nonidet P-40) to release the nuclei, and pelleted nuclei were resuspended in restriction enzyme buffer containing 0.1% SDS and 1.6% Triton-X. A total of 1,500 units of Csp6I (Fisher BioReagents) were added and incubated at 37°C for overnight. Digestions were halted by incubation with 1.5% SDS at 65°C for 30 min. Digested samples were added to the ligation buffer containing 4000U T4 DNA ligase (NEB) and 1% Triton X-100 to neutralize SDS, and incubated for 24 h at 16°C . Samples were decrosslinked by overnight incubation at 65°C with proteinase K. Libraries were extracted using standard phenol/chloroform protocols, precipitated using ethanol, and desalted using Microcon Ultra Cell YM-100 columns. Primers were designed at the HOXD9 promoter and for each restriction fragment containing risk-associated SNPs (Supplementary Table 2). PCR was performed using Taq polymerase (QIAGEN), using the following conditions: 5 min at 94°C , 35 cycles of (20 s at 94°C , 20 s at 61°C and 30 s at 72°C), and 10 min at 72°C . The PCR products were run on a 1.7% agarose gel, gel purified using the QIAGEN Gel Extraction kit, and sequenced.

For analysing long-range interaction quantitatively a BAC library (RP11-892F14, CHORI) was prepared as follows: briefly, BAC DNA was purified from a 500 ml *Escherichia coli* culture and $20 \mu\text{g}$ of BAC DNA was then digested with Csp6I overnight at 37°C followed by ligation with T4 DNA ligase overnight at 16°C (refs 53,54). 3C libraries as well as the BAC library were titrated by serial dilution to identify the concentration of template for quantitative PCR analysis for each genomic region of interest. The PCR products were run on an agarose gel and stained with ethidium bromide. Intensity measurements for each of the bands were quantified using ImageQuant LAS4000 (Roche) with Image QuantTL8.1 software (Roche). The interaction frequency was determined by dividing the amount of PCR product obtained using the 3C template by the amount of PCR product obtained using the control template. Data were normalized using the lowest interaction value amongst the 11 amplicons (that is, the lowest interaction was set to 1). Each template was run in triplicate and the standard error of measurement (s.e.m.) calculated. The s.e.m. for each amplicon was $<15\%$.

Transcription factor-binding site analysis. Transcription factor-binding site analyses were performed in Biobase, using the TRANSFAC Match tool. Two 21-bp sequences, representing the two alleles of rs2857532 ± 10 bp, were uploaded. The TRANSFAC MATRIX TABLE library was used (Release 2014.2), with the vertebrate_non_redundant.prfl profile and cutoffs selected to minimize the sum of both error rates (false positive and false negatives).

RNAseq analysis in HOXD9 models. One million cells were plated into a P100 dish and cultured for 48 h. Cells were washed twice with ice-cold PBS and lysed *in situ*. RNA extractions were performed using the QIAGEN miRNAeasy kit with on-column DNase I digests, following the manufacturer's instructions. RNA sequencing was performed by BGI Americas. Briefly, $3 \mu\text{g}$ of RNA was depleted of ribosomal RNA and libraries created using the Illumina TruSeq kit. Sequencing was performed by multiplexing six samples per lane for sequencing on an Illumina HiSeq2000. Linear fold change in transcript abundance before and after HOXD9 overexpression and *P* values from analysis of variance for differential gene expression were calculated using the workflow implemented in the Partek Genomics Suite.

Enrichment analysis. Enrichment analysis was restricted to genes that demonstrated at least twofold change in transcript abundance and showed significant differential expression (FDR <0.1) after HOXD9 overexpression (IOE11-DNp53: 128 genes; FT246-shp53-R24C: 34 genes). Ovarian and fallopian gene lists were analysed separately. First, all SNPs ($n = 9,772,651$) with minor allele frequency >0.01 from the HGSOE risk meta-analysis described above were mapped to genes from the UCSC hg19 knownGene track. SNPs were assigned to genes if they were in the gene or 50 kb on either side of it. We then compared the distribution of *P* values for association with HGSOE risk for SNPs in HOXD9 target genes and their flanking regions with the distribution in all other genes and their corresponding flanking regions using two-sample K-S tests²⁶. The analysis was repeated using extended boundaries of 10, 25 and 100 kb on either side of each gene. Second, proportions of SNPs associated with HGSOE risk at *P* value thresholds of $P < 10^{-3}$, $< 10^{-4}$ and $< 10^{-5}$ in HOXD9 target genes was compared with the corresponding proportions in all remaining genes using two-tailed Fisher's exact tests for each of the flanking boundaries considered in the first analysis. Third, we ranked all genes in descending order of the $-\log_{10}$ of the *P* value of the most significant SNP in each gene (± 50 kb). A total of 22,577 genes were covered by SNPs with the 50-kb flanking regions considered. Gene set enrichment analysis with 10,000 permutations was used to test enrichment of genes ranked highly in this list among the ovarian and fallopian tube HOXD9 targets⁵⁵.

Pathway analysis. Pathway analysis involved genes that demonstrated at least twofold change in transcript abundance after HOXD9 overexpression (IOE11-DNp53: 2,357 genes; FT246-shp53-R24C: 1,972 genes). These genes and corresponding *P* values for differential expression were used as input for the jActiveModules²⁸ (v 2.2.3) plugin in Cytoscape⁵⁶ (v 3.1.0). Ovarian and fallopian gene lists were analysed separately. The jActiveModules approach combines input *P* values with prior knowledge of biological interactions between input genes to identify modules or networks of input genes with high functional connectivity and significant differential expression. We set up the plugin to identify the single best network using default parameters (except regional scoring). Known biological interactions in the data were prioritized using 290,438 non-redundant binary interactions between 17,977 genes/proteins compiled from up-to-date, high-quality, curated resources that combine comprehensive genetic, molecular, protein-protein and protein-DNA interaction annotation. These were Multinet⁵⁷, InWeb⁵⁸, HINT⁵⁹ and 252 KEGG⁶⁰ pathways converted to binary format using the Bioconductor package graphite⁶¹. Pathways from the Ingenuity Knowledge Base and KEGG significantly enriched in the single best network discovered by jActiveModules for the ovarian and fallopian gene lists were identified using a right-tailed Fisher's exact test with FDR control for multiple pathway comparisons by the Benjamini-Hochberg method. The KEGG-based analysis was conducted using the Database for Annotation, Visualization and Integrated Discovery (v 6.7) (ref. 62). We reported pathways common to both the ovarian and fallopian HOXD9 networks that were significant at FDR <0.05 with $>5\%$ of the pathway involved.

References

- Ahmediyeh, N. *et al.* 8q24 prostate, breast, and colon cancer risk loci show tissue-specific long-range interaction with MYC. *Proc. Natl Acad. Sci. USA* **107**, 9742–9746 (2010).
- Grisanzio, C. *et al.* Genetic and functional analyses implicate the NUDT11, HNF1B, and SLC22A3 genes in prostate cancer pathogenesis. *Proc. Natl Acad. Sci. USA* **109**, 11252–11257 (2012).
- Pomerantz, M. M. *et al.* Analysis of the 10q11 cancer risk locus implicates MSMB and NCOA4 in human prostate tumorigenesis. *PLoS Genet.* **6**, e1001204 (2010).
- French, J. D. *et al.* Functional variants at the 11q13 risk locus for breast cancer regulate cyclin D1 expression through long-range enhancers. *Am. J. Hum. Genet.* **92**, 489–503 (2013).
- Bojesen, S. E. *et al.* Multiple independent variants at the TERT locus are associated with telomere length and risks of breast and ovarian cancer. *Nat. Genet.* **45**, 371–384 384e1–2 (2013).
- Hazelett, D. J. *et al.* Comprehensive functional annotation of 77 prostate cancer risk loci. *PLoS Genet.* **10**, e1004102 (2014).
- Pomerantz, M. M. *et al.* The 8q24 cancer risk variant rs6983267 shows long-range interaction with MYC in colorectal cancer. *Nat. Genet.* **41**, 882–884 (2009).
- Smemo, S. *et al.* Obesity-associated variants within FTO form long-range functional connections with IRX3. *Nature* **507**, 371–375 (2014).
- Song, H. *et al.* A genome-wide association study identifies a new ovarian cancer susceptibility locus on 9p22.2. *Nat. Genet.* **41**, 996–1000 (2009).
- Pharoah, P. D. *et al.* GWAS meta-analysis and replication identifies three new susceptibility loci for ovarian cancer. *Nat. Genet.* **45**, 362–370 370e1–2 (2013).
- Permut-Wey, J. *et al.* Identification and molecular characterization of a new ovarian cancer susceptibility locus at 17q21.31. *Nat. Commun.* **4**, 1627 (2013).
- Goode, E. L. *et al.* A genome-wide association study identifies susceptibility loci for ovarian cancer at 2q31 and 8q24. *Nat. Genet.* **42**, 874–879 (2010).

13. Bolton, K. L. *et al.* Common variants at 19p13 are associated with susceptibility to ovarian cancer. *Nat. Genet.* **42**, 880–884 (2010).
14. Shen, H. *et al.* Epigenetic analysis leads to identification of HNF1B as a subtype-specific susceptibility gene for ovarian cancer. *Nat. Commun.* **4**, 1628 (2013).
15. Li, Q. *et al.* Integrative eQTL-based analyses reveal the biology of breast cancer risk loci. *Cell* **152**, 633–641 (2013).
16. Li, Q. *et al.* Expression QTL-based analyses reveal candidate causal genes and loci across five tumor types. *Hum. Mol. Genet.* **23**, 5294–5302 (2014).
17. Westra, H. J. *et al.* Systematic identification of trans eQTLs as putative drivers of known disease associations. *Nat. Genet.* **45**, 1238–1243 (2013).
18. Permuth-Wey, J. *et al.* LIN28B polymorphisms influence susceptibility to epithelial ovarian cancer. *Cancer Res.* **71**, 3896–3903 (2011).
19. Kuchenbaecker, K. B. *et al.* Identification of six new susceptibility loci for invasive epithelial ovarian cancer. *Nat. Genet.* **47**, 164–171 (2015).
20. Network, C.G.A.R. Integrated genomic analyses of ovarian carcinoma. *Nature* **474**, 609–615 (2011).
21. Ahmed, A. A. *et al.* Driver mutations in TP53 are ubiquitous in high grade serous carcinoma of the ovary. *J. Pathol.* **221**, 49–56 (2010).
22. Karst, A. M., Levanon, K. & Drapkin, R. Modeling high-grade serous ovarian carcinogenesis from the fallopian tube. *Proc. Natl Acad. Sci. USA* **108**, 7547–7552 (2011).
23. Lawrenson, K. *et al.* Senescent fibroblasts promote neoplastic transformation of partially transformed ovarian epithelial cells in a three-dimensional model of early stage ovarian cancer. *Neoplasia* **12**, 317–325 (2010).
24. Fletcher, M. N. *et al.* Master regulators of FGFR2 signalling and breast cancer risk. *Nat. Commun.* **4**, 2464 (2013).
25. Small, K. S. *et al.* Identification of an imprinted master trans regulator at the KLF14 locus related to multiple metabolic phenotypes. *Nat. Genet.* **43**, 561–564 (2011).
26. Schork, A. J. *et al.* All SNPs are not created equal: genome-wide association studies reveal a consistent pattern of enrichment among functionally annotated SNPs. *PLoS Genet.* **9**, e1003449 (2013).
27. Silverman, E. K. & Loscalzo, J. Network medicine approaches to the genetics of complex diseases. *Discov. Med.* **14**, 143–152 (2012).
28. Ideker, T., Ozier, O., Schwikowski, B. & Siegel, A. F. Discovering regulatory and signalling circuits in molecular interaction networks. *Bioinformatics* **18** (Suppl 1): S233–S240 (2002).
29. Kanehisa, M. & Goto, S. KEGG: kyoto encyclopedia of genes and genomes. *Nucleic Acids Res.* **28**, 27–30 (2000).
30. Stranger, B. E. *et al.* Patterns of cis regulatory variation in diverse human populations. *PLoS Genet.* **8**, e1002639 (2012).
31. Shah, N. & Sukumar, S. The Hox genes and their roles in oncogenesis. *Nat. Rev. Cancer* **10**, 361–371 (2010).
32. Kelemen, L. M. *et al.* Genome-wide significant risk associations for mucinous ovarian carcinoma. *Nat. Genet.* **47**, 888–897 (2015).
33. Coetzee, S. G. *et al.* Cell type specific enrichment of risk associated regulatory elements at ovarian cancer susceptibility loci. *Hum. Mol. Genet.* **24**, 3595–3607 (2015).
34. Bayarsaihan, D. *et al.* Expression of BEN, a member of TFII-I family of transcription factors, during mouse pre- and postimplantation development. *Gene Expr. Patterns* **3**, 579–589 (2003).
35. Bayarsaihan, D. *et al.* Homez, a homeobox leucine zipper gene specific to the vertebrate lineage. *Proc. Natl Acad. Sci. USA* **100**, 10358–10363 (2003).
36. Raines, A. M. *et al.* Recombineering-based dissection of flanking and paralogous Hox gene functions in mouse reproductive tracts. *Development* **140**, 2942–2952 (2013).
37. Chen, F. & Capocchi, M. R. Paralogous mouse Hox genes, Hoxa9, Hoxb9, and Hoxd9, function together to control development of the mammary gland in response to pregnancy. *Proc. Natl Acad. Sci. USA* **96**, 541–546 (1999).
38. Tabuse, M. *et al.* Functional analysis of HOXD9 in human gliomas and glioma cancer stem cells. *Mol. Cancer* **10**, 60 (2011).
39. Deinnocentes, P., Perry, A. L., Graff, E. C., Lutful Kabir, F. M. & Curtis Bird, R. Characterization of HOX gene expression in canine mammary tumour cell lines from spontaneous tumours. *Vet. Comp. Oncol.* **13**, 322–336 (2015).
40. Purrington, K. S. *et al.* Genetic variation in mitotic regulatory pathway genes is associated with breast tumor grade. *Hum. Mol. Genet.* **23**, 6034–6046 (2014).
41. Peng, C., Zhang, X., Yu, H., Wu, D. & Zheng, J. Wnt5a as a predictor in poor clinical outcome of patients and a mediator in chemoresistance of ovarian cancer. *Int. J. Gynecol. Cancer* **21**, 280–288 (2011).
42. Doherty, J. A. *et al.* ESR1/SYNE1 polymorphism and invasive epithelial ovarian cancer risk: an Ovarian Cancer Association Consortium study. *Cancer Epidemiol. Biomarkers Prev.* **19**, 245–250 (2010).
43. Pearce, C. L. *et al.* Genetic variation in insulin-like growth factor 2 may play a role in ovarian cancer risk. *Hum. Mol. Genet.* **20**, 2263–2272 (2011).
44. Sood, A. K. *et al.* Biological significance of focal adhesion kinase in ovarian cancer: role in migration and invasion. *Am. J. Pathol.* **165**, 1087–1095 (2004).
45. Stengel, K. & Zheng, Y. Cdc42 in oncogenic transformation, invasion, and tumorigenesis. *Cell Signal.* **23**, 1415–1423 (2011).
46. Perets, R. *et al.* Transformation of the fallopian tube secretory epithelium leads to high-grade serous ovarian cancer in brca;tp53;pten models. *Cancer Cell* **24**, 751–765 (2013).
47. Auersperg, N. Ovarian surface epithelium as a source of ovarian cancers: unwarranted speculation or evidence-based hypothesis? *Gynecol. Oncol.* **130**, 246–251 (2013).
48. Howie, B., Fuchsberger, C., Stephens, M., Marchini, J. & Abecasis, G. R. Fast and accurate genotype imputation in genome-wide association studies through pre-phasing. *Nat. Genet.* **44**, 955–959 (2012).
49. Howie, B. N., Donnelly, P. & Marchini, J. A flexible and accurate genotype imputation method for the next generation of genome-wide association studies. *PLoS Genet.* **5**, e1000529 (2009).
50. Xing, G., Lin, C. Y., Wooding, S. P. & Xing, C. Blindly using Wald's test can miss rare disease-causal variants in case-control association studies. *Ann. Hum. Genet.* **76**, 168–177 (2012).
51. Price, A. L. *et al.* Principal components analysis corrects for stratification in genome-wide association studies. *Nat. Genet.* **38**, 904–909 (2006).
52. Li, N. F. *et al.* A modified medium that significantly improves the growth of human normal ovarian surface epithelial (OSE) cells in vitro. *Lab. Invest.* **84**, 923–931 (2004).
53. Dekker, J. The three 'C' s of chromosome conformation capture: controls, controls, controls. *Nat. Methods* **3**, 17–21 (2006).
54. Miele, A., Gheldof, N., Tabuchi, T. M., Dostie, J. & Dekker, J. Mapping chromatin interactions by chromosome conformation capture. *Curr. Protoc. Mol. Biol.* Chapter 21, Unit 21. 11 (2006).
55. Subramanian, A. *et al.* Gene set enrichment analysis: a knowledge-based approach for interpreting genome-wide expression profiles. *Proc. Natl Acad. Sci. USA* **102**, 15545–15550 (2005).
56. Shannon, P. *et al.* Cytoscape: a software environment for integrated models of biomolecular interaction networks. *Genome Res.* **13**, 2498–2504 (2003).
57. Khurana, E., Fu, Y., Chen, J. & Gerstein, M. Interpretation of genomic variants using a unified biological network approach. *PLoS Comput. Biol.* **9**, e1002886 (2013).
58. Lage, K. *et al.* A human phenome-interactome network of protein complexes implicated in genetic disorders. *Nat. Biotechnol.* **25**, 309–316 (2007).
59. Das, J. & Yu, H. HINT: high-quality protein interactomes and their applications in understanding human disease. *BMC Syst. Biol.* **6**, 92 (2012).
60. Kanehisa, M. *et al.* Data, information, knowledge and principle: back to metabolism in KEGG. *Nucleic Acids Res.* **42**, D199–D205 (2014).
61. Sales, G., Calura, E., Cavalieri, D. & Romualdi, C. graphite—a bioconductor package to convert pathway topology to gene network. *BMC Bioinformatics* **13**, 20 (2012).
62. Huang, d. W., Sherman, B. T. & Lempicki, R. A. Systematic and integrative analysis of large gene lists using DAVID bioinformatics resources. *Nat. Protoc.* **4**, 44–57 (2009).

Acknowledgements

This study would not have been possible without the contributions of the following: J. Dennis, A. M. Dunning, D. F. Easton, P. Hall (COGS); D. C. Tessier, F. Bacot, D. Vincent, S. LaBoissière and F. Robidoux and the staff of the genotyping unit (Genome Quebec); D. C. Whiteman, A. C. Green, N. K. Hayward, P. G. Parsons, D. M. Purdie, B. M. Smithers, D. Gotley, A. Clouston, I. Brown, S. Moore, K. Harrap, T. Sadkowski, S. O'Brien, E. Minehan, D. Roffe, S. O'Keefe, S. Lipshut, G. Connor, H. Berry, F. Walker, T. Barnes, J. Thomas, L. Terry, M. Connard, L. Boves, M.-R. Malt, J. White, C. Mosse, N. Tait, C. Bambach, A. Biankan, R. Brancatisano, M. Coleman, M. Cox, S. Deane, G. L. Falk, J. Gallagher, M. Hollands, T. Hugh, D. Hunt, J. Jorgensen, C. Martin, M. Richardson, G. Smith, R. Smith, D. Storey, J. Avramovic, J. Croese, J. D'Arcy, S. Fairley, J. Hansen, J. Masson, L. Nathanson, B. O'Loughlin, L. Rutherford, R. Turner, M. Windsor, J. Bessell, P. Devitt, G. Jamieson, D. Watson, S. Blamey, A. Boussioutas, R. Cade, G. Crosthwaite, I. Faragher, J. Gribbin, G. Hebbard, G. Kiroff, B. Mann, R. Millar, P. O'Brien, R. Thomas, S. Wood, S. Archer, K. Faulkner, J. Hamdorf (ACS); R. Stuart-Harris, F. Kirsten, J. Rutovitz, P. Clingan, A. Glasgow, A. Proietto, S. Braye, G. Otton, J. Shannon, T. Bonaventura, J. Stewart, S. Begbie, M. Friedlander, D. Bell, S. Baron-Hay, G. Gard, D. Nevell, N. Pavlakis, S. Valmadre, B. Young, C. Camaris, R. Crouch, L. Edwards, N. Hacker, D. Marsden, G. Robertson, P. Beale, J. Beith, J. Carter, C. Dalrymple, R. Houghton, P. Russell, L. Anderson, M. Links, J. Grygiel, J. Hill, A. Brand, K. Byth, R. Jaworski, P. Harnett, R. Sharma, G. Wain, D. Purdie, D. Whiteman, B. Ward, D. Papadimos, A. Crandon, M. Cummings, K. Horwood, A. Obermair, L. Perrin, D. Wyld, J. Nicklin, M. Davy, M. K. Oehler, C. Hall, T. Dodd, T. Healy, K. Pittman, D. Henderson, J. Miller, J. Pierdes, A. Achan, P. Blomfield, D. Challis, R. McIntosh, A. Parker, B. Brown, R. Rome, D. Allen, P. Grant, S. Hyde, R. Laurie, M. Robbie, D. Healy, T. Jobling, T. Manolitsas, J. McNealage, P. Rogers, B. Susil, E. Sumithran, I. Simpson, I. Haviv, K. Phillips, D. Rischin, S. Fox, D. Johnson, S. Lade, P. Waring, M. Loughrey, N. O'Callaghan, B. Murray, L. Mileshkin, P. Allan, V. Billson, J. Pyman, D. Neesham, M. Quinn, A. Hamilton, C. Underhill, R. Bell, L. F. Ng, R. Blum, V. Ganju,

I. Hammond, C. Stewart, Y. Leung, M. Buck, N. Zeps (ACS); G. Peuteman, T. Van Brussel and D. Smeets (BEL); T. Koehler (GER); L. Gacucova (HMO); P. Schürmann, F. Kramer, W. Zheng, T.-W. Park-Simon, K. Beer-Grondke and D. Schmidt (HJO); G. S. Keeney, S. Windebank, C. Hilker and J. Vollenweider (MAY); the state cancer registries of AL, AZ, AR, CA, CO, CT, DE, FL, GA, HI, ID, IL, IN, IA, KY, LA, ME, MD, MA, MI, NE, NH, NJ, NY, NC, ND, OH, OK, OR, PA, RI, SC, TN, TX, VA, WA and WYL (NHS); L. Paddock, M. King, U. Chandran, A. Samoila and Y. Bensman (NJO); L. Brinton, M. Sherman, A. Hutchinson, N. Szeszenia-Dabrowska, B. Peplonska, W. Zatonski, A. Soni, P. Chao and M. Stagner (POL); C. Luccarini, P. Harrington the SEARCH team and ECRIC (SEA); the Scottish Gynaecological Clinical Trials group and SCOTROC1 investigators (SRO); W.-H. Chow, Y.-T. Gao (SWH); information about TCGA and the investigators and institutions who constitute the TCGA research network can be found at <http://cancergenome.nih.gov/> (TCGA); I. Jacobs, M. Widschwendter, E. Wozniak, N. Balogun, A. Ryan, C. Karpinskyj and J. Ford (UKO); Carole Pye (UKR); a full list of the investigators who contributed to the generation of the WTCCC data is available from <http://www.wtccc.org.uk/> (WTCCC).

Grant Support—higher level funding: the COGS project is funded through a European Commission's Seventh Framework Programme grant (agreement number 223175—HEALTH-F2-2009-223175). The Ovarian Cancer Association Consortium is supported by a grant from the Ovarian Cancer Research Fund thanks to donations by the family and friends of Kathryn Sladek Smith (PPD/RPCI.07). The scientific development and funding for this project were in part supported by the US National Cancer Institute (NCI) GAME-ON Post-GWAS Initiative (U19-CA148112). This study made use of data generated by the Wellcome Trust Case Control consortium. Funding for the project was provided by the Wellcome Trust under award 076113. The results published here are in part based on data generated by The Cancer Genome Atlas Project established by the NCI and National Human Genome Research Institute.

Personal support: K.L. is supported by a K99/R00 grant from the NCI (1K99CA184415-01). This project was supported by a Program Project Development Grant from the Ovarian Cancer Research Fund (S.A.G. and A.M.). Aspects of this project were performed within the Norris Cancer Centre at USC, supported in part by award number P30CA014089 from the NCI. The content is solely the responsibility of the authors and does not necessarily represent the official views of the NCI or the NIH. D.F.E. is a Principal Research Fellow of Cancer Research UK. G.C.-T. and P.M.W. are

supported by the National Health and Medical Research Council. B.K. holds an American Cancer Society Early Detection Professorship (SIOP-06-258-01-COUN). L.E.K. is supported by a Canadian Institutes of Health Research Investigator award (MSH-87734). S.P.K. is supported by a Gates Cambridge Scholarship.

Author contributions

K.L., Q.L., M.L.F., P.D.P. and S.A.G. designed the study; Q.L. performed the eQTL analysis; K.L., T.S. and J.M.L. performed the *in vitro* analyses; J.T. and P.D.P. performed the genetic association analyses; J.S. performed the 3C; K.L. performed the RNAseq and S.K. performed the pathway and network analyses; A.K. and R.D. provided the FT246 cell line; K.L., Q.L., M.L.F., P.D.P., S.K. and S.A.G. wrote the manuscript. Remaining authors contributed samples for the genetic analyses and fine mapping. All authors approved the final version of the manuscript.

Additional information

Supplementary Information accompanies this paper at <http://www.nature.com/naturecommunications>

Competing financial interests: The authors declare no competing financial interests.

Reprints and permission information is available online at <http://npg.nature.com/reprintsandpermissions/>

How to cite this article: Lawrenson, K. *et al.* Cis-eQTL analysis and functional validation of candidate susceptibility genes for high-grade serous ovarian cancer. *Nat. Commun.* 6:8234 doi: 10.1038/ncomms9234 (2015).



This work is licensed under a Creative Commons Attribution 4.0 International License. The images or other third party material in this article are included in the article's Creative Commons license, unless indicated otherwise in the credit line; if the material is not included under the Creative Commons license, users will need to obtain permission from the license holder to reproduce the material. To view a copy of this license, visit <http://creativecommons.org/licenses/by/4.0/>

Kate Lawrenson^{1,*}, Qiyuan Li^{2,3,*}, Siddhartha Kar⁴, Ji-Heui Seo³, Jonathan Tyrer⁴, Tassja J. Spindler¹, Janet Lee¹, Yibu Chen⁵, Alison Karst⁶, Ronny Drapkin⁶, Katja K.H. Aben^{7,8}, Hoda Anton-Culver⁹, Natalia Antonenkova¹⁰, Australian Ovarian Cancer Study Group[†], Helen Baker⁴, Elisa V. Bandera¹¹, Yukie Bean^{12,13}, Matthias W. Beckmann¹⁴, Andrew Berchuck¹⁵, Maria Bisogna¹⁶, Line Bjorge^{17,18}, Natalia Bogdanova¹⁹, Louise A. Brinton²⁰, Angela Brooks-Wilson^{21,22}, Fiona Bruinsma²³, Ralf Butzow^{24,25}, Ian G. Campbell^{26,27,28}, Karen Carty²⁹, Jenny Chang-Claude³⁰, Georgia Chenevix-Trench³¹, Anne Chen³², Zhihua Chen³², Linda S. Cook³³, Daniel W. Cramer^{34,35}, Julie M. Cunningham³⁶, Cezary Cybulski³⁷, Agnieszka Dansonka-Mieszkowska³⁷, Joe Dennis³⁸, Ed Dicks⁴, Jennifer A. Doherty³⁹, Thilo Dörk¹⁹, Andreas du Bois^{40,41}, Matthias Dürst⁴², Diana Eccles⁴³, Douglas T. Easton³⁸, Robert P. Edwards^{44,45}, Ursula Eilber³⁰, Arif B. Ekici⁴⁶, Peter A. Fasching^{14,47}, Brooke L. Fridley⁴⁸, Yu-Tang Gao⁴⁹, Aleksandra Gentry-Maharaj⁵⁰, Graham G. Giles^{23,51}, Rosalind Glasspool²⁹, Ellen L. Goode⁵², Marc T. Goodman^{53,54}, Jacek Grownwald³⁷, Patricia Harrington³⁸, Philipp Harter^{40,41}, Hanis Nazihah Hasmad⁵⁵, Alexander Hein¹⁴, Florian Heitz^{40,41}, Michelle A.T. Hildebrandt⁵⁶, Peter Hillemanns⁵⁷, Estrid Hogdall^{58,59}, Claus Hogdall⁶⁰, Satoyo Hosono⁶¹, Edwin S. Iversen⁶², Anna Jakubowska³⁷, Paul James²⁹, Allan Jensen⁶³, Bu-Tian Ji²⁰, Beth Y. Karlan⁶⁴, Susanne Kruger Kjaer^{65,66}, Linda E. Kelemen⁶⁷, Melissa Kellar^{12,13}, Joseph L. Kelley⁴⁴, Lambertus A. Kiemeny⁶⁸, Camilla Krakstad^{17,18}, Jolanta Kupryjanczyk³⁷, Diether Lambrechts^{69,70}, Sandrina Lambrechts⁷¹, Nhu D. Le⁷², Alice W. Lee¹, Shashi Lele⁷³, Arto Leminen²⁴, Jenny Lester⁶⁴, Douglas A. Levine¹⁶, Dong Liang⁷⁴, Jolanta Lissowska⁷⁵, Karen Lu⁷⁶, Jan Lubinski³⁷, Lene Lundvall⁵⁹, Leon F.A.G. Massuger⁷⁷, Keitaro Matsuo⁷⁸, Valerie McGuire⁷⁹, John R. McLaughlin⁸⁰, Heli Nevanlinna²⁴, Ian McNeish⁸¹, Usha Menon⁵⁰, Francesmary Modugno^{44,45,82,83},

Kirsten B. Moysich⁷³, Steven A. Narod⁸⁴, Lotte Nedergaard⁸⁵, Roberta B. Ness⁸⁶, Mat Adenan Noor Azmi⁸⁷, Kunle Odunsi⁸⁸, Sara H. Olson⁸⁴, Irene Orlow⁸⁴, Sandra Orsulic⁶⁴, Rachel Palmieri Weber⁸⁹, Celeste L. Pearce¹, Tanja Pejovic^{12,13}, Liisa M. Pelttari²⁴, Jennifer Permut-Wey⁹⁰, Catherine M. Phelan⁹⁰, Malcolm C. Pike^{1,91}, Elizabeth M. Poole^{91,92}, Susan J. Ramus¹, Harvey A. Risch⁹³, Barry Rosen⁹⁴, Mary Anne Rossing^{95,96}, Joseph H. Rothstein⁷⁹, Anja Rudolph³⁰, Ingo B. Runnebaum⁴², Iwona K. Rzepecka³⁷, Helga B. Salvesen^{17,18}, Joellen M. Schildkraut^{97,98}, Ira Schwaab⁹⁸, Thomas A. Sellers⁹⁰, Xiao-Ou Shu⁹⁹, Yurii B. Shvetsov¹⁰⁰, Nadeem Siddiqui¹⁰¹, Weiva Sieh⁷⁹, Honglin Song⁴, Melissa C. Southey²⁷, Lara Sucheston⁷³, Ingvild L. Tangen^{17,18}, Soo-Hwang Teo^{55,102}, Kathryn L. Terry^{34,35}, Pamela J. Thompson^{53,54}, Agnieszka Timorek¹⁰³, Ya-Yu Tsai⁹⁰, Shelley S. Tworoger^{91,92}, Anne M. van Altena⁷⁷, Els Van Nieuwenhuysen⁷¹, Ignace Vergote⁷¹, Robert A. Vierkant⁵², Shan Wang-Gohrke¹⁰⁴, Christine Walsh⁶⁴, Nicolas Wentzensen²⁰, Alice S. Whittemore⁷⁹, Kristine G. Wicklund⁹⁵, Lynne R. Wilkens¹⁰⁰, Yin-Ling Woo^{87,102}, Xifeng Wu⁵⁶, Anna H. Wu¹, Hannah Yang²⁰, Wei Zheng⁹⁹, Argyrios Ziogas⁹, Alvaro Monteiro¹⁰⁵, Paul D. Pharoah⁴, Simon A. Gayther^{1,**} & Matthew L. Freedman^{3,**}

¹ Department of Preventive Medicine, Keck School of Medicine, University of Southern California Norris Comprehensive Cancer Center, Los Angeles, California 90033, USA. ² Medical College, Xiamen University, Xiamen 361102, China. ³ Department of Medical Oncology, The Center for Functional Cancer Epigenetics, Dana-Farber Cancer Institute, Boston, Massachusetts 02215, USA. ⁴ Department of Oncology, Department of Public Health and Primary Care, University of Cambridge, Strangeways Research Laboratory, Cambridge CB1 8RN, UK. ⁵ Bioinformatics Service, Norris Medical Library, University of Southern California, Los Angeles, California 90033, USA. ⁶ Departments of Pathology and Medical Oncology, Dana-Farber Cancer Institute, 450 Brookline Avenue, Boston, Massachusetts 02215, USA. ⁷ Department for Health Evidence, Radboud University Medical Centre, PO Box 9101, 6500 HB Nijmegen, The Netherlands. ⁸ Comprehensive Cancer Center, The Netherlands, PO Box 19079, 3501 DB Utrecht, The Netherlands. ⁹ Department of Epidemiology, Director of Genetic Epidemiology Research Institute, School of Medicine, University of California Irvine, Irvine, California 92697, USA. ¹⁰ Byelorussian Institute for Oncology and Medical Radiology Aleksandrov N.N., 223040 Minsk, Belarus. ¹¹ Cancer Prevention and Control, Rutgers Cancer Institute of New Jersey, New Brunswick, New Jersey 08903, USA. ¹² Department of Obstetrics and Gynecology, Oregon Health and Science University, Portland, Oregon 97239, USA. ¹³ Knight Cancer Institute, Oregon Health and Science University, Portland, Oregon 97239, USA. ¹⁴ Department of Gynecology and Obstetrics, University Hospital Erlangen, Friedrich-Alexander-University Erlangen-Nuremberg, Comprehensive Cancer Center Erlangen-EMN, 91054 Erlangen, Germany. ¹⁵ Department of Obstetrics and Gynecology, Duke University Medical Center, Durham, North Carolina 27710, USA. ¹⁶ Gynecology Service, Department of Surgery, Memorial Sloan-Kettering Cancer Center, New York, New York 10065, USA. ¹⁷ Department of Gynecology and Obstetrics, Haukeland University Hospital, N-5058 Bergen, Norway. ¹⁸ Centre for Cancer Biomarkers, Department of Clinical Science, University of Bergen, N-5020 Bergen, Norway. ¹⁹ Gynaecology Research Unit, Hannover Medical School, 30625 Hannover, Germany. ²⁰ Division of Cancer Epidemiology and Genetics, National Cancer Institute, Bethesda, Maryland 20892, USA. ²¹ Canada's Michael Smith Genome Sciences Centre, BC Cancer Agency, Vancouver, British Columbia, Canada V5Z 1L3. ²² Department of Biomedical Physiology and Kinesiology, Simon Fraser University, Burnaby, British Columbia, Canada V5A 1S6. ²³ Cancer Epidemiology Centre, Cancer Council Victoria, Melbourne, Victoria 3004, Australia. ²⁴ Department of Obstetrics and Gynecology, University of Helsinki and Helsinki University Central Hospital, 00100 Helsinki, Finland. ²⁵ Department of Pathology, Helsinki University Central Hospital, FI-00014 Helsinki, Finland. ²⁶ Cancer Genetics Laboratory, Research Division, Peter MacCallum Cancer Centre, Melbourne, Victoria 3002, Australia. ²⁷ Department of Pathology, University of Melbourne, Parkville, Victoria 3010, Australia. ²⁸ Sir Peter MacCallum Department of Oncology, University of Melbourne, Parkville, Victoria 3010, Australia. ²⁹ Cancer Research UK Clinical Trials Unit, The Beatson West of Scotland Cancer Centre, Glasgow G12 0YN, UK. ³⁰ German Cancer Research Center (DKFZ), Division of Cancer Epidemiology, 69120 Heidelberg, Germany. ³¹ Cancer Division, QIMR Berghofer Medical Research Institute, Brisbane, Queensland 4006, Australia. ³² Department of Biostatistics, Moffitt Cancer Center, Tampa, Florida 33612, USA. ³³ Division of Epidemiology and Biostatistics, Department of Internal Medicine, University of New Mexico, Albuquerque, New Mexico 87131, USA. ³⁴ Harvard School of Public Health, Boston, Massachusetts 02215, USA. ³⁵ Obstetrics and Gynecology Epidemiology Center, Brigham and Women's Hospital and Harvard Medical School, Boston, Massachusetts 02215, USA. ³⁶ Department of Laboratory Medicine and Pathology, Mayo Clinic, Rochester, Minnesota 55905, USA. ³⁷ Department of Genetics and Pathology, Pomeranian Medical University, Szczecin, Poland. ³⁸ Centre for Cancer Genetic Epidemiology, Department of Public Health and Primary Care, University of Cambridge, Cambridge CB1 8RN, UK. ³⁹ Department of Epidemiology, The Geisel School of Medicine at Dartmouth, Lebanon, New Hampshire 03756, USA. ⁴⁰ Department of Gynecology and Gynecologic Oncology, Kliniken Essen-Mitte, 45136 Essen, Germany. ⁴¹ Department of Gynecology and Gynecologic Oncology, Dr Horst Schmidt Kliniken Wiesbaden, 65199 Wiesbaden, Germany. ⁴² Department of Gynecology, Jena University Hospital—Friedrich Schiller University, 07737 Jena, Germany. ⁴³ Faculty of Medicine, University of Southampton, SO16 5YA, UK. ⁴⁴ Department of Obstetrics, Gynecology and Reproductive Sciences, University of Pittsburgh School of Medicine, Pittsburgh, Pennsylvania 15213, USA. ⁴⁵ Ovarian Cancer Center of Excellence, University of Pittsburgh, Pittsburgh, Pennsylvania 15213, USA. ⁴⁶ University Hospital Erlangen, Institute of Human Genetics, Friedrich-Alexander-University Erlangen-Nuremberg, 91054 Erlangen, Germany. ⁴⁷ Division of Hematology and Oncology, Department of Medicine, David Geffen School of Medicine, University of California at Los Angeles, Los Angeles, California 90095, USA. ⁴⁸ Biostatistics and Informatics Shared Resource, University of Kansas Medical Center, Kansas City, Kansas 66160, USA. ⁴⁹ Shanghai Cancer Institute, Shanghai 200030, China. ⁵⁰ Department of Women's Cancer, Institute for Women's Health, University College London, London W1T 7DN, UK. ⁵¹ Centre for Epidemiology and Biostatistics, Melbourne School of Population and Global Health, The University of Melbourne, Melbourne, Victoria 3010, Australia. ⁵² Department of Health Science Research, Mayo Clinic, Rochester, Minnesota 55905, USA. ⁵³ Cancer Prevention and Control, Samuel Oschin Comprehensive Cancer Institute, Cedars-Sinai Medical Center, Los Angeles, California 90048, USA. ⁵⁴ Community and Population Health Research Institute, Department of Biomedical Sciences, Cedars-Sinai Medical Center, Los Angeles, California 90048, USA. ⁵⁵ Cancer Research Initiatives Foundation, Sime Darby Medical Centre, 47500 Subang Jaya, Malaysia. ⁵⁶ Department of Epidemiology, The University of Texas MD Anderson Cancer Center, Houston, Texas 77030, USA. ⁵⁷ Departments of Obstetrics and Gynaecology, Hannover Medical School, 30625 Hannover, Germany. ⁵⁸ Institute of Cancer Epidemiology, Danish Cancer Society, DK-2100 Copenhagen, Denmark. ⁵⁹ Molecular Unit, Department of Pathology, Herlev Hospital, University of Copenhagen, 1165 Copenhagen, Denmark. ⁶⁰ Gyn Clinic, Rigshospitalet, University of Copenhagen, 2100 Copenhagen, Denmark. ⁶¹ Division of Epidemiology and Prevention, Aichi Cancer Center Research Institute, Nagoya 464-0021, Japan. ⁶² Department of

Statistical Science, Duke University, Durham, North Carolina 27708, USA. ⁶³Department of Gynecology, Rigshospitalet, University of Copenhagen, 2100 Copenhagen, Denmark. ⁶⁴Women's Cancer Program at the Samuel Oschin Comprehensive Cancer Institute, Cedars-Sinai Medical Center, Los Angeles, California 90048, USA. ⁶⁵Department of Virus, Lifestyle and Genes, Danish Cancer Society Research Center, 2100 Copenhagen, Denmark. ⁶⁶Department of Gynaecology, The Juliane Marie Centre, Rigshospitalet, University of Copenhagen, 2100 Copenhagen, Denmark. ⁶⁷Department of Public Health Sciences, College of Medicine, Medical University of South Carolina, Charleston, South Carolina 29435, USA. ⁶⁸Radboud University Medical Centre, Radboud Institute for Health Sciences, 6500 HB Nijmegen, The Netherlands. ⁶⁹Vesalius Research Center, VIB, 3000 Leuven, Belgium. ⁷⁰Laboratory for Translational Genetics, Department of Oncology, University of Leuven, B-3000 Leuven, Belgium. ⁷¹Division of Gynecological Oncology, Department of Oncology, University Hospitals Leuven, B-3000 Leuven, Belgium. ⁷²Cancer Control Research, BC Cancer Agency, Vancouver, British Columbia, Canada V5Z 1L3. ⁷³Department of Cancer Prevention and Control, Roswell Park Cancer Institute, Buffalo, New York 14263, USA. ⁷⁴College of Pharmacy and Health Sciences, Texas Southern University, Houston, Texas 77004, USA. ⁷⁵Department of Cancer Epidemiology and Prevention, Maria Skłodowska-Curie Memorial Cancer Center and Institute of Oncology, Warsaw, Poland. ⁷⁶Department of Gynecologic Oncology, The University of Texas MD Anderson Cancer Center, Houston, Texas 77030, USA. ⁷⁷Department of Gynaecology, Radboud University Medical Centre, 6500 HB Nijmegen, The Netherlands. ⁷⁸Department of Preventive Medicine, Kyushu University Faculty of Medical Sciences, 819-0395 Fukuoka, Japan. ⁷⁹Department of Health Research and Policy—Epidemiology, Stanford University School of Medicine, Stanford, California 94305, USA. ⁸⁰Prosserman Centre for Health Research, Lunenfeld-Tanenbaum Research Institute, Mount Sinai Hospital, Toronto, Ontario, Canada M5G 1X5. ⁸¹Institute of Cancer Sciences, Wolfson Wohl Cancer Research Centre, Beatson Institute for Cancer Research, University of Glasgow, Glasgow G61 1QH, UK. ⁸²Women's Cancer Research Program, Magee-Women's Research Institute and University of Pittsburgh Cancer Institute, Pittsburgh, Pennsylvania 15213, USA. ⁸³Department of Epidemiology, University of Pittsburgh Graduate School of Public Health, Pittsburgh, Pennsylvania 15261, USA. ⁸⁴Department of Epidemiology and Biostatistics, Memorial Sloan Kettering Cancer Center, New York, New York 10065, USA. ⁸⁵Department of Pathology, Rigshospitalet, University of Copenhagen, 2100 Copenhagen, Denmark. ⁸⁶The University of Texas School of Public Health, Houston, Texas 77030, USA. ⁸⁷Department of Obstetrics and Gynaecology, University Malaya Medical Centre, University Malaya, 50603 Kuala Lumpur, Malaysia. ⁸⁸Department of Gynecological Oncology, Roswell Park Cancer Institute, Buffalo, New York 14263, USA. ⁸⁹Department of Community and Family Medicine, Duke University Medical Center, Durham, North Carolina 27710, USA. ⁹⁰Department of Cancer Epidemiology, Moffitt Cancer Center, Tampa, Florida 33612, USA. ⁹¹Channing Division of Network Medicine, Brigham and Women's Hospital and Harvard Medical School, Boston, Massachusetts 02215, USA. ⁹²Department of Epidemiology, Harvard T.H. Chan School of Public Health, Boston, Massachusetts 02215, USA. ⁹³Department of Chronic Disease Epidemiology, Yale School of Public Health, New Haven, Connecticut 06510, USA. ⁹⁴Department of Gynecologic-Oncology, Princess Margaret Hospital, and Department of Obstetrics and Gynecology, Faculty of Medicine, University of Toronto, Toronto, Ontario, Canada M5S 2J7. ⁹⁵Program in Epidemiology, Division of Public Health Sciences, Fred Hutchinson Cancer Research Center, Seattle, Washington 98109, USA. ⁹⁶Department of Epidemiology, University of Washington, Seattle, Washington 98195, USA. ⁹⁷Cancer Control and Population Sciences, Duke Cancer Institute, Durham, North Carolina 27710, USA. ⁹⁸Institut für Humangenetik Wiesbaden, 65187 Wiesbaden, Germany. ⁹⁹Division of Epidemiology, Department of Medicine, Vanderbilt Epidemiology Center and Vanderbilt-Ingram Cancer Center, Vanderbilt University School of Medicine, Nashville, Tennessee 37232, USA. ¹⁰⁰Cancer Epidemiology Program, University of Hawaii Cancer Center, Honolulu, Hawaii 96813, USA. ¹⁰¹Department of Gynaecological Oncology, Glasgow Royal Infirmary, Glasgow G4 0SF, UK. ¹⁰²University Malaya Cancer Research Institute, Faculty of Medicine, University Malaya Medical Centre, University Malaya, 50603 Kuala Lumpur, Malaysia. ¹⁰³Department of Obstetrics, Gynecology and Oncology, IInd Faculty of Medicine, Warsaw Medical University and Brodnowski Hospital, Warsaw, Poland. ¹⁰⁴Department of Obstetrics and Gynecology, University of Ulm, 89075 Ulm, Germany. ¹⁰⁵Cancer Epidemiology Program, Division of Population Sciences, H. Lee Moffitt Cancer Center & Research Institute, Tampa, Florida 33612, USA. * These authors contributed equally to this work. ** These authors jointly supervised this work. † A full list of consortium members appears at the end of the paper.

Australian Ovarian Cancer Study Group

David Bowtell¹⁰⁶, Penelope M. Webb¹⁰⁷ & Anna deFazio¹⁰⁸

¹⁰⁶Peter MacCallum Cancer Centre, Melbourne, Victoria 3002, Australia. ¹⁰⁷QIMR Berghofer, Brisbane, Queensland 4006, Australia. ¹⁰⁸Westmead Hospital and Center for Cancer Research, University of Sydney at Westmead Millennium Institute, Westmead, Sydney, New South Wales 2145, Australia.

Minerva Access is the Institutional Repository of The University of Melbourne

Author/s:

Lawrenson, K; Li, Q; Kar, S; Seo, J-H; Tyrer, J; Spindler, TJ; Lee, J; Chen, Y; Karst, A; Drapkin, R; Aben, KKH; Anton-Culver, H; Antonenkova, N; Baker, H; Bandera, EV; Bean, Y; Beckmann, MW; Berchuck, A; Bisogna, M; Bjorge, L; Bogdanova, N; Brinton, LA; Brooks-Wilson, A; Bruinsma, F; Butzow, R; Campbell, IG; Carty, K; Chang-Claude, J; Chenevix-Trench, G; Chen, A; Chen, Z; Cook, LS; Cramer, DW; Cunningham, JM; Cybulski, C; Dansonka-Mieszkowska, A; Dennis, J; Dicks, E; Doherty, JA; Doerk, T; Du Bois, A; Duerst, M; Eccles, D; Easton, DT; Edwards, RP; Eilber, U; Ekici, AB; Fasching, PA; Fridley, BL; Gao, Y-T; Gentry-Maharaj, A; Giles, GG; Glasspool, R; Goode, EL; Goodman, MT; Grownwald, J; Harrington, P; Harter, P; Hasmad, HN; Hein, A; Heitz, F; Hildebrandt, MAT; Hillemanns, P; Hogdall, E; Hogdall, C; Hosono, S; Iversen, ES; Jakubowska, A; James, P; Jensen, A; Ji, B-T; Karlan, BY; Kjaer, SK; Kelemen, LE; Kellar, M; Kelley, JL; Kiemenev, LA; Krakstad, C; Kupryjanczyk, J; Lambrechts, D; Lambrechts, S; Le, ND; Lee, AW; Lele, S; Leminen, A; Lester, J; Levine, DA; Liang, D; Lissowska, J; Lu, K; Lubinski, J; Lundvall, L; Massuger, LFAG; Matsuo, K; McGuire, V; McLaughlin, JR; Nevanlinna, H; McNeish, I; Menon, U; Modugno, F; Moysich, KB; Narod, SA; Nedergaard, L; Ness, RB; Azmi, MAN; Odunsi, K; Olson, SH; Orlow, I; Orsulic, S; Weber, RP; Pearce, CL; Pejovic, T; Pelttari, LM; Permuth-Wey, J; Phelan, CM; Pike, MC; Poole, EM; Ramus, SJ; Risch, HA; Rosen, B; Rossing, MA; Rothstein, JH; Rudolph, A; Runnebaum, IB; Rzepecka, IK; Salvesen, HB; Schildkraut, JM; Schwaab, I; Sellers, TA; Shu, X-O; Shvetsov, YB; Siddiqui, N; Sieh, W; Song, H; Southey, MC; Sucheston, L; Tangen, IL; Teo, S-H; Terry, KL; Thompson, PJ; Timorek, A; Tsai, Y-Y; Tworoger, SS; Van Altena, AM; Van Nieuwenhuysen, E; Vergote, I; Vierkant, RA; Wang-Gohrke, S; Walsh, C; Wentzensen, N; Whittemore, AS; Wicklund, KG; Wilkens, LR; Woo, Y-L; Wu, X; Wu, AH; Yang, H; Zheng, W; Ziogas, A; Monteiro, A; Pharoah, PD; Gayther, SA; Freedman, ML; Grp, AOCs; Bowtell, D; Webb, PM; Defazio, A

Title:

Cis-eQTL analysis and functional validation of candidate susceptibility genes for high-grade serous ovarian cancer

Date:

2015-09-01