



RESEARCH ARTICLE

Cognitive clinico-radiological paradox in early stages of multiple sclerosis

Tomas Uher¹ , Jan Krasensky², Lukas Sobisek³, Jana Blahova Dusankova¹, Zdenek Seidl², Eva Kubala Havrdova¹, Maria Pia Sormani⁴, Dana Horakova^{1,a}, Tomas Kalincik^{5,6,a}  & Manuela Vaneckova^{2,a}

¹Department of Neurology and Center of Clinical Neuroscience, First Faculty of Medicine, Charles University and General University Hospital in Prague, Prague, Czech Republic

²Department of Radiodiagnostic, First Faculty of Medicine, Charles University and General University Hospital in Prague, Prague, Czech Republic

³Department of Statistics and Probability, University of Economics in Prague, Prague, Czech Republic

⁴Department of Health Sciences, University of Genoa, Genoa, Italy

⁵CORe, Department of Medicine, University of Melbourne, Melbourne, Australia

⁶Department of Neurology, Royal Melbourne Hospital, Melbourne, Australia

Correspondence

Tomas Uher, Department of Neurology and Center of Clinical Neuroscience, First Faculty of Medicine, Charles University and General University Hospital in Prague, Katerinska 30, 120 00 Prague, Czech Republic. Tel: 00420 22496 5551; Fax: 00420 22491 7907; E-mail: tomas.uher@vfn.cz

Funding Information

The study was supported by Czech Ministries of Education and Health (GA CR 16-03322S, PRVOUK-P26/LF1/4, RVO-VFN64165).

Funding for biostatistical support was provided by Novartis. Lukas Sobisek received support from the project of the University of Economics, Prague - Internal Grant Agency, project No. 44/2017 "Clustering and regression analysis of micro panel data." This research was conducted while Dr. Uher was a MSBase Fellow.

Received: 6 September 2017; Revised: 3 November 2017; Accepted: 15 November 2017

Annals of Clinical and Translational Neurology 2018; 5(1): 81–91

doi: 10.1002/acn3.512

^aauthors contributed equally.

Introduction

The clinical presentation of multiple sclerosis (MS) includes a wide range of physical, as well as cognitive, signs, and symptoms.^{1–4} In particular, cognitive impairment has recently been increasingly recognized as an

Abstract

Objective: To investigate whether the strength of the association between magnetic resonance imaging (MRI) metrics and cognitive outcomes differs between various multiple sclerosis subpopulations. **Methods:** A total of 1052 patients were included in this large cross-sectional study. Brain MRI (T1 and T2 lesion volume and brain parenchymal fraction) and neuropsychological assessment (Brief International Cognitive Assessment for Multiple Sclerosis and Paced Auditory Serial Addition Test) were performed. **Results:** Weak correlations between cognitive domains and MRI measures were observed in younger patients (age \leq 30 years; absolute Spearman's $\rho = 0.05$ – 0.21), with short disease duration (<2 years; $\rho = 0.01$ – 0.21), low Expanded Disability Status Scale [EDSS] (≤ 1.5 ; $\rho = 0.08$ – 0.18), low T2 lesion volume (lowest quartile; <0.59 mL; $\rho = 0.01$ – 0.20), and high brain parenchymal fraction (highest quartile; >86.66 ; $\rho = 0.01$ – 0.16). Stronger correlations between cognitive domains and MRI measures were observed in older patients (age $>$ 50 years; $\rho = 0.24$ – 0.50), with longer disease duration (>15 years; $\rho = 0.26$ – 0.53), higher EDSS (≥ 5.0 ; $\rho = 0.23$ – 0.39), greater T2 lesion volume (highest quartile; >5.33 mL; $\rho = 0.16$ – 0.32), and lower brain parenchymal fraction (lowest quartile; <83.71 ; $\rho = 0.13$ – 0.46). The majority of these observed results were confirmed by significant interactions ($P \leq 0.01$) using continuous variables. **Interpretation:** The association between structural brain damage and functional cognitive impairment is substantially weaker in multiple sclerosis patients with a low disease burden. Therefore, disease stage should be taken into consideration when interpreting associations between structural and cognitive measures in clinical trials, research studies, and clinical practice.

important determinant of employment status and associated societal costs,^{5,6} negatively impacting social functioning, coping, quality of life, and treatment adherence among patients with MS.⁷

In this context, associations between brain imaging measures and cognitive functioning have been observed

in patients with MS.^{1,3} Particularly, T1 lesion volume (T1-LV) and T2 lesion volume (T2-LV),^{8,9} damage of normal-appearing white matter,^{10,11} occurrence of cortical lesions,^{12,13} and gray matter,^{14,15} or thalamic atrophy^{11,16} have been suggested as important brain imaging correlates of cognitive impairment.

Even though most previous studies have shown a relationship between lesion burden or brain atrophy on MRI and cognitive impairment, there are still a number of studies that did not report such associations.^{2,17–26} In addition, the magnitude of reported associations varies wildly between studies.^{1,3,27} By further examining these inconsistencies, the interpretation of associations between structural and cognitive metrics can possibly be improved by identifying contextual determinants of the strength of these associations.

Most previous studies investigating MRI correlates of cognitive impairment included small samples or heterogeneous MS populations. This study was conducted using a large and clinically well-described observational cohort of patients with predominantly relapsing–remitting MS, mostly on disease-modifying treatments. We hypothesized that the strength of the association between brain MRI and cognitive measures in MS varies as a function of disease stage, cumulative disease burden, and patient characteristics.

Materials and Methods

Study population

The Grant Quantitative study was a 3-year prospective observational study investigating a comprehensive battery of clinical and paraclinical measures set up to evaluate MS progression in routine clinical practice. Inclusion criteria were as follows: clinically isolated syndrome or clinically definite MS confirmed by MRI and cerebrospinal fluid examination, Czech fluent speaker, and age ≥ 18 . Exclusion criteria were as follows: signs and symptoms suggestive of a disease other than MS or a serious psychiatric disorder. Enrollment started in June 2012. For the present analysis, the database was locked in October 2015. The study protocol was approved by the Medical Ethics Committee of the General University Hospital in Prague and First Faculty of Medicine, Charles University in Prague, Czech Republic. All patients provided their written informed consent.

MR image acquisition and analysis

This study used MRI scans performed within 3 months before or after neuropsychological assessment. All MRI scans were performed on the same scanner (1.5-Tesla Gyroscan; Philips Medical Systems, Best, the Netherlands) in the Department of Radiodiagnostics at General University Hospital in Prague using the same protocol. The

standardized protocol consisted of two sequences: fluid-attenuated inversion recovery (FLAIR) and T1-weighted three-dimensional turbo field echo (T1-WI/3D/TFE). Contiguous slices covering the whole brain were acquired with the following parameters: FLAIR sequence (time to echo = 140 msec, time to repetition 11,000 msec, inversion time 2600 msec, matrix size 256×181 , flip angle 90° , slice thickness/gap = 1.5/0 mm, field of view = 256 mm), and T1-WI/3D/TFE (time to echo/time to repetition: 5/25 msec, flip angle = 30° , matrix size 256×256 , slice thickness/gap = 1.0/0 mm, field of view = 256 mm).

Volumetric image analysis was performed in the Department of Radiodiagnostics, General University Hospital, in Prague using ScanView. ScanView is a semi-automated software tool for measurement of T1-LV and T2-LV, BPF (brain parenchymal fraction) whole brain, and corpus callosum volumes via segmentation-based techniques. A detailed description of the ScanView was published previously.²⁸

T2-LV was measured from the FLAIR sequence. WB volume was measured from the T1-WI/TFE 3D sequence. Intracranial volume was calculated as the sum of the total brain parenchymal volume and the total intraventricular and subarachnoidal cerebrospinal fluid volume. Normalized compartment volume was calculated as follows: (BPF) = whole-brain parenchymal volume/intracranial volume.^{4, 28, 29}

Neuropsychological assessment

All participants were tested using the Czech-validated version of the Brief International Cognitive Assessment for Multiple Sclerosis (BICAMS).^{30,31} Cognitive processing speed was assessed with the Symbol Digit Modalities Test (SDMT) where stimuli were presented visually and only the oral response form was recorded. Memory was tested with the Brief Visuospatial Memory Test Revised (BVMTR) in the visual modality, and the California Verbal Learning Test Second Edition (CVLT2) in the auditory sphere. For both Brief Visuospatial Memory Test Revised and California Verbal Learning Test Second Edition, only the initial learning trials of each test were administered. All but of 12 patients were also tested with the three-second interval Paced Auditory Serial Addition Test (PASAT), thus providing a second test of cognitive processing speed, although in auditory modality.

Impairment for a single test was defined at the level of 1.5 standard deviation (i.e., z-score < 1.5 compared with a healthy population), using the regression-based norms of 134 healthy controls adjusted for age, sex, and education. Raw scores of the cognitive tests were used in the statistical models and presented results. Patients were evaluated as cognitively impaired when scoring outside the normal range in one or more of the BICAMS tests.^{30,31}

For the assessment of depressive symptoms, the Beck Depression Inventory-II (BDI-II) was used.

Statistical analysis

All analyses were performed using SPSS 22 (IBM, Armonk, NY) and Statistica 12 (Statsoft, Tulsa, OK). Normality of distribution was assessed using the Kolmogorov–Smirnov method and visual inspection of histograms. In parametric analyses, non-normally distributed variables were transformed (T1-LV and T2-LV using Cox–Box transformation, and BDI-II using logarithmic transformation and PASAT using logit transformation).

Associations between the cognitive (SDMT, BVMTR, CVLT2, PASAT) and MRI (T1-LV, T2-LV, and BPF) measures in MS subgroups were evaluated using nonparametric Spearman's correlation coefficients (ρ) to eliminate effects of non-normal distribution and potential presence of outliers.

The primary analysis consisted of interaction models of selected continuous variables (age, disease duration, Expanded Disability Status Scale [EDSS], T2-LV, and BPF) and MRI measures, in association with cognitive performance. These analyses were conducted to evaluate the relationship between disease or patient characteristics and the strength of the associations between brain MRI, with cognitive measures. In the next step, multivariable models with interaction terms were adjusted for the potential confounders such as sex, age, education, depression, and treatment status. Table S1 provides detailed description of the adjusted multivariable models with the interaction term.

Multivariable linear regression analyses were used to test the relationships between cognitive and MRI measures adjusted for sex, age or disease duration, education, depression, and treatment status. Only treatment status was set as a categorical variable with the following three categories: injectable disease-modifying treatments (glatiramer acetate, interferons β , intravenous immunoglobulin), dimethyl fumarate and teriflunomide, second-line disease-modifying treatments (alemtuzumab, fingolimod, natalizumab, mitoxantrone, rituximab), and no disease-modifying treatment. Because of multicollinearity between the age and disease duration, multivariable models were adjusted only for age.

Importantly, MS patient subgroups were stratified according to their age, disease duration, EDSS, T2-LV, or BPF (presented in Figures 1 and 2). This was established arbitrarily and used mainly for graphical purposes to show differences in strength of correlations among different MS subgroups.

To control false discovery rate, Benjamini–Hochberg procedure with $P < 0.01$ was applied.

Results

Demographic, clinical, and MRI characteristics

Of the 1253 patients enrolled in the study, 1052 had all cognitive and MRI data available and were included in the analysis. Of these, 867 (82%) patients were treated with disease-modifying treatment. Median EDSS was 2.0, and average disease duration was 10.0 years. Cognitive impairment (abnormal outcome of BICAMS battery) was present in 282 (27%) of patients. Abnormal outcome of BICAMS battery was driven mostly by abnormal SDMT, which was present in 229 (81%) of patients with cognitive impairment. Table 1 describes details of demographic, clinical, neuropsychological, and MRI characteristics of the patient cohort.

Correlation between cognitive and MRI measures

All associations between the cognitive domains and all MRI measures reached statistical significance (absolute Spearman's $\rho \geq \pm 0.24$; $P < 0.001$). The strongest correlations between cognitive and MRI measures were identified among SDMT and T1-LV, T2-LV, and BPF ($\rho \geq 0.39$; standardized beta $\geq \pm 0.36$; $P < 0.001$) (Table 2). In addition, we found some sex differences in correlations between cognitive and MRI measures (Table S2). Sample size needed to observe significant ($P < 0.05$) Spearman's correlations between cognitive (SDMT) and brain MRI measures in different MS subgroups is shown in Table 3.

Adjusted regression analysis between cognitive and MRI measures

The associations between cognitive and MRI measures were confirmed in multivariable models adjusted for sex, age, education, depression, and treatment status ($P < 0.001$). All covariates, such as sex, age, education, depression, and MRI measures, were independently (all $P < 0.0001$) correlated with SDMT in the multivariable model. More details about the independent correlates of the other cognitive subtests, including BVMTR, CVLT2, and PASAT, are provided in Table S3.

Correlation between cognitive and MRI measures stratified by age, disease duration, disability status, lesion load, and brain atrophy subgroups

Overall, the strength of associations between the cognitive domains and MRI measures increased with greater age, disease duration, EDSS step, T2-LV, and lower BPF.

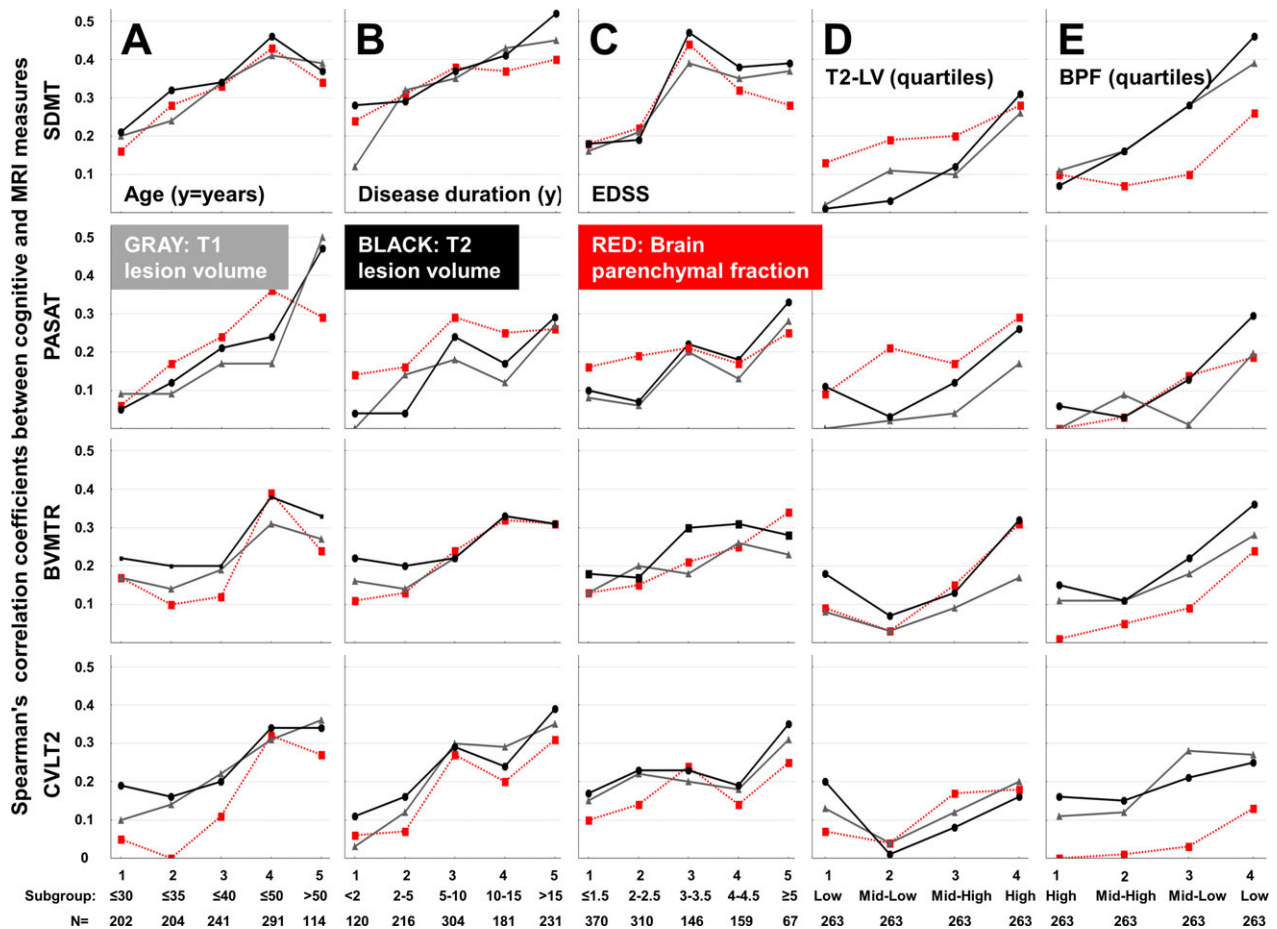


Figure 1. The strength of associations between brain MRI (brain parenchymal fraction, T1 and T2 lesion volume) and cognitive measures (Symbol Digit Modalities Test, three-second interval Paced Auditory Serial Addition Test, Brief Visuospatial Memory Test Revised, California Verbal Learning Test Second Edition) in multiple sclerosis subpopulations. Subgroups of patients stratified by (A) age, (B) disease duration, (C) Expanded Disability Status Scale, (D) T2 lesion volume, or (E) brain parenchymal fraction were used for graphical purposes (the primary analysis of interaction models was performed using continuous variables).

In stratified analyses, Spearman’s correlation coefficients between cognitive domains and MRI measures in patients >50 years of age were between $\rho = 0.24$ and $\rho = 0.50$. On the other hand, absolute ρ values were considerably lower (between 0.05 and 0.21) in patients ≤ 30 years of age. An effect of higher age was most prominently observed between T1-LV or T2-LV and PASAT, where the ρ difference between patients >50 years and patients ≤ 30 years was between 0.41 and 0.42.

Correlation coefficients between cognitive domains and MRI measures in patients with disease duration >15 years were between $\rho = 0.26$ and $\rho = 0.53$. In contrast, ρ values were considerably lower (between 0.01 and 0.21) in patients with disease duration <2 years. An effect of longer disease duration was most prominently observed between T1-LV and SDMT, where the ρ difference between patients with disease duration >15 years and patients with disease duration <2 years was 0.42.

Correlation coefficients between the cognitive domains and MRI measures in patients with $\text{EDSS} \geq 5.0$ were between $\rho = 0.23$ and $\rho = 0.39$. ρ values were considerably lower (between 0.08 and 0.18) in patients with $\text{EDSS} \leq 1.5$. This progressive effect of greater EDSS was observed for all cognitive measures, where the highest ρ difference between patients with $\text{EDSS} \geq 5.0$ and patients with $\text{EDSS} \leq 1.5$ was between 0.21 and 0.23.

Correlation coefficients between cognitive domains and MRI measures in patients within the highest quartile of T2-LV (>5.33 mL) were between $\rho = 0.16$ and $\rho = 0.32$. ρ values were considerably lower (between 0.01 and 0.20) in patients within the lowest quartile of T2-LV (<0.59 mL). An effect of greater T2-LV was most apparent for associations between T1-LV or T2-LV and SDMT, where the ρ difference between patients with the lowest and the highest T2-LV quartile was 0.28.

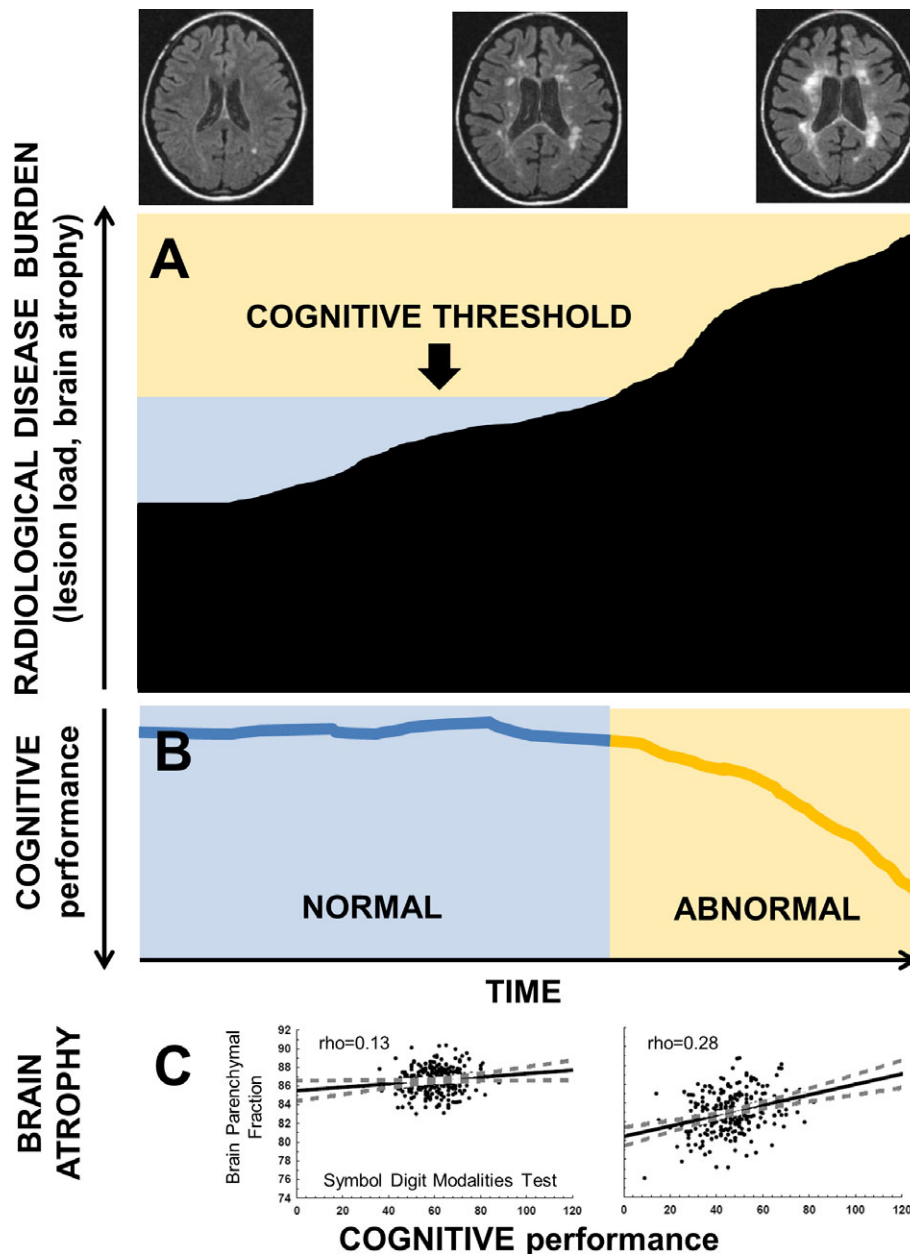


Figure 2. (A-B) The threshold concept of brain pathology for the manifestation of a cognitive decline in multiple sclerosis patients. (C) The strength of associations between brain parenchymal fraction and Symbol Digit Modalities Test scores in patients within the lowest and the highest quartile of T2 lesion volume.

Correlation coefficients between the cognitive domains and MRI measures in patients within the lowest quartile of BPF (<83.71) were between $\rho = 0.13$ and $\rho = 0.46$. Absolute ρ values were considerably lower (between 0.01 and 0.16) in patients in the highest quartile of BPF (>86.66). An effect of lower BPF was most apparent for associations between T1-LV or T2-LV and SDMT, where the ρ difference between patients with the lowest and the highest BPF quartile was between 0.27 and 0.39 (Figure 1, Figure S1).

Interaction effects of age, disease duration, disability status, lesion load, and brain atrophy on the associations between cognitive and MRI measures

There were significant interactions of variables indicating disease burden (age, disease duration, and EDSS) and MRI measures, predicting cognitive impairment. However, in multivariable models adjusted for sex, age,

Table 1. Baseline demographic, clinical, neuropsychological, and MRI characteristics of the sample.

Sample characteristics	N = 1052
Demographic	
Number of females	734 (70%)
Age in years	38.1 ± 8.8; 37.5
Education	14.7 ± 3.0; 14.0
Unemployed	233 (22%)
Employed or students	819 (78%)
Disease duration at baseline (years)	10.0 ± 7.3; 8.1
Clinical	
Expanded Disability Status Scale ¹	2.5 ± 1.3; 2.0; (0-6.5)
No disease-modifying treatment	185 (17%)
First-line disease-modifying treatment ²	670 (64%)
Second-line disease-modifying treatment ³	197 (19%)
Cognitive	
Symbol Digit Modalities Test ⁴	55.3 ± 11.6; 56.0 (22%)
Three-second interval Paced Auditory Serial Addition Test ⁵	47.8 ± 11.4; 50.0
Brief Visuospatial Memory Test revisited ⁴	27.6 ± 6.4; 29.0 (10%)
California Verbal Learning Test Second Edition ⁴	59.2 ± 11.7; 61.0 (5%)
Abnormal Brief International Cognitive Assessment for Multiple Sclerosis (BICAMS) ⁶	282 (27%)
Beck Depression Inventory-II ⁷	7.4 ± 7.2; 5.0 (183; 17%)
MRI	
Brain parenchymal fraction (%)	85.1 ± 2.2; 85.4
T1 lesion volume (ml)	1.6 ± 2.0; 0.8
T2 lesion volume (ml)	4.8 ± 8.1; 1.7

Unless otherwise indicated, all data are reported as mean ± standard deviation, median.

¹Data in parentheses are ranges.

²Injectable disease-modifying treatment (glatiramer acetate, interferons, intravenous immunoglobulins), dimethyl fumarate, teriflunomide.

³Second-line disease-modifying treatment: alemtuzumab, fingolimod, natalizumab, mitoxantrone, rituximab.

⁴Data in parentheses are percentages of patients with abnormal test outcome.

⁵12 subjects have no Three-second interval Paced Auditory Serial Addition Test.

⁶Abnormal Brief International Cognitive Assessment for Multiple Sclerosis was defined as scoring outside the normal range in ≥1 Brief International Cognitive Assessment for Multiple Sclerosis subtests.

⁷Data in parentheses are number and percentage of patients with Beck Depression Inventory-II score >14.

education, depression, and treatment status, we found only a limited number of interaction effects with $P < 0.01$ after Benjamini–Hochberg correction. There were also significant interactions of variables indicating radiological disease burden (T2-LV and BPF) and MRI measures, predicting cognitive impairment. Adjusted multivariable

Table 2. Correlations among the cognitive, demographic, clinical, and MRI measures.

	Age	Education	Disease duration	Expanded Disability Status Scale	Beck Depression Inventory-II	Symbol Digit Modalities Test	Three-second interval Paced Auditory Serial Addition Test	Brief Visuospatial Memory Test Revised	California Verbal Learning Test Second Edition	T1 lesion volume	T2 lesion volume
Education	-0.12										
Disease duration	0.42	NS									
Expanded Disability Status Scale	0.38	-0.16	0.41								
Beck Depression Inventory-II	0.19	-0.12	0.15	0.39							
Symbol Digit Modalities Test	-0.29	0.24	-0.26	-0.44	-0.23						
Three-second interval Paced Auditory Serial Addition Test	-0.19	0.23	-0.19	-0.33	-0.20	0.52					
Brief Visuospatial Memory Test Revised	-0.24	0.26	-0.16	-0.28	-0.11	0.54	0.38				
California Verbal Learning Test Second Edition	-0.24	0.29	-0.15	-0.26	-0.11	0.42	0.35	0.47			
T1 lesion volume	0.33	NS	0.42	0.42	0.12	-0.39	-0.22	-0.28	-0.28		
T2 lesion volume	0.27	NS	0.45	0.43	0.13	-0.41	-0.24	-0.31	-0.29	0.86	
Brain parenchymal fraction	-0.40	NS	-0.43	-0.41	-0.13	0.39	0.29	0.28	0.23	-0.55	-0.61

NS, not significant correlation ($P > 0.01$ after Benjamini–Hochberg correction procedure).

rho, Spearman's correlation coefficients are reported.

The values in bold are $|rho| \geq 0.40$.

Table 3. Sample size needed to observe significant ($P < 0.05$) correlations between cognitive (Symbol Digit Modalities Test) and brain MRI measures in different patient subgroups.

MRI measures	Disease duration (years)				
	<2	2–5	5–10	10–15	>15
Brain parenchymal fraction	88	47	36	44	24
T2 lesion volume	88	107	41	26	15
MRI measures	Age (years)				
	≤30	≤35	≤40	≤50	>50
Brain parenchymal fraction	151	50	36	22	34
T2 lesion volume	88	39	34	19	29
MRI measures	Expanded Disability Status Scale (steps)				
	0–1.5	2.0–2.5	3.0–3.5	4.0–4.5	≥5.0
Brain parenchymal fraction	119	80	21	39	50
T2 lesion volume	119	107	18	28	26
MRI measures	T2 lesion volume (quartiles)				
	Low	Mid–low	Mid–high	High	–
Brain parenchymal fraction	>200	107	97	50	–
T2 lesion volume	>200	>200	>200	41	–
MRI measures	Brain parenchymal fraction (quartiles)				
	High	Mid–high	Mid–low	Low	–
Brain parenchymal fraction	>200	>200	>200	58	–
T2 lesion volume	>200	151	50	19	–

models confirmed these observations by demonstrating significant interactions ($P < 0.01$) between the grouping MRI variables indicating radiological disease severity (quartiles of T2-LV and BPF) and MRI measures (T1-LV, T2-LV, and BPF; Figure 1, Table 4).

Discussion

Although most previous MS studies have observed associations between brain atrophy or MRI lesion measures and cognitive performance, the magnitude of these associations was highly variable between studies.^{1,9,27} It has been suggested that heterogeneity of the utilized imaging and cognitive metrics is primarily responsible for this variability.²⁷ It is, however, not yet clear whether this association varies with respect to patient characteristics as well.

In this cross-sectional study of 1052 well-defined patients with MS, we found that the strength of associations between volumetric brain MRI and cognitive measures increases with clinically and radiologically more advanced disease. Correlations between brain MRI and cognitive metrics were relatively low in patients with a low disease burden (i.e., short disease duration or young age, low EDSS, low lesion load, and low brain atrophy). In contrast, considerably stronger correlations between brain MRI and cognitive measures were found in patients with a high disease burden (i.e., long disease duration or older age, high EDSS, high lesion load, or high brain atrophy).

The observed trends of increasing radiological burden were confirmed by interaction terms with quantitative MRI metrics (T1-LV, T2-LV, and BPF) versus cognitive tests. Even though patients with older age, longer disease duration, or higher EDSS also showed more pronounced correlations between MRI and cognitive metrics, the majority of interactions between age, disease duration, or EDSS and MRI measures in multivariable models predicting cognitive performance were not significant after correction for false discovery rate. We hypothesize this may be explained by the fact that associations between age or disease duration and cumulative disease burden are only indirect and that EDSS (as a measure of clinical disease burden) is less objective and a relatively inaccurate measure of disease burden,³² as compared to volumetric MRI measures.³³

Taken together, the strong associations between MRI and cognitive metrics in more advanced disease imply there is a greater sensitivity of cognitive performance to structural changes in patients with already greater cumulative structural brain damage. We suggest that cognitive decline does not become clinically apparent until a certain threshold of substantial structural brain changes has been reached. The concept that a threshold for brain pathology needs to be met before cognitive decline becomes clinically apparent (Figure 2) means that irreversible axonal damage and brain tissue loss under a certain threshold may accumulate in relatively asymptomatic patients. Once the cognitive brain capacity has been surpassed and functional compensatory mechanisms fail, cognitive disability may become clinically apparent.^{34–36} This could explain why patients with some but minor brain atrophy or with a small lesion burden often show only limited cognitive deterioration relative to brain pathology.³⁷ In contrast, patients with significant preexisting brain damage are relatively more sensitive to any additional structural brain damage.

It has been established that the sensitivity of cognitive and MRI measures to minor changes of cognitive performance or brain pathology is limited due to a number of factors influencing measurement accuracy. For example,

Table 4. Interactions between brain MRI measures and demographic, clinical, or MRI grouping variables in relation to cognitive performance.

Interaction term		Symbol Digit Modalities Test	Three-second interval Paced Auditory Serial Addition Test ¹	Brief Visuospatial Memory Test Revised	California Verbal Learning Test Second Edition
Disease duration	Disease duration x Brain parenchymal fraction	NS	NS	NS	NS
	Disease duration x T1 lesion volume ²	NS	NS	NS	-0.28**†
	Disease duration x T2 lesion volume ²	NS	NS	-0.25**†	-0.25**†
Age	Age x Brain parenchymal fraction	NS	NS	4.08***	2.90**†
	Age x T1 lesion volume ²	NS	-0.63**	-0.49**†	-0.46**†
	Age x T2 lesion volume ²	NS	-0.61***	-0.54***	NS
Expanded Disability Status Scale (EDSS)	EDSS x Brain parenchymal fraction	NS	NS	NS	NS
	EDSS x T1 lesion volume ²	-0.32**†	NS	-0.30**†	NS
	EDSS x T2 lesion volume ²	-0.34***	NS	-0.32**	NS
T2 lesion volume	T2 lesion volume x Brain parenchymal fraction	5.04***	4.39***	5.49***	3.05**†
	T2 lesion volume ² x T1 lesion volume ²	-0.89***	-0.72***	-0.59***	-0.40***
	T2 lesion volume ² x T2 lesion volume ²	-0.80***	-0.73***	-0.60***	-0.31**†
Brain parenchymal fraction	Brain parenchymal fraction x Brain parenchymal fraction	-4.55**†	NS	-8.39***	-4.27**†
	Brain parenchymal fraction x T1 lesion volume ²	4.69***	3.95**	5.09***	3.59***

Standardized beta values of the interaction terms from adjusted multiple regression analyses are reported.

¹Logistically transformed variable.

²Cox–Box transformed variable.

** $P < 0.01$.

*** $P < 0.001$.

†not significant ($P > 0.01$) after Benjamini–Hochberg correction procedure (performed for 14 P -values).

NS, not significant interaction ($P > 0.01$).

actual lesion or brain volume differences between two subjects with a low radiological disease burden might be observed as comparable due to the fact that lesion or brain volume measurement can be error influenced by biological and technical biases. The same could also be a factor in cognitive measures in patients with a relative preserved cognitive performance. Here, an actual cognitive difference between two subjects might be observed as comparable due to cognitive performance measurement error or physiological fluctuations influenced by variety of factors such as motivation and other personality factors, time of day, and fatigue level. Hence, it is not particularly surprising that the accuracy of correlations between MRI and cognitive measures in patients with low radiological and cognitive disease burden may be affected substantially.

Findings from this study could help elucidate the reason for the lack of associations found in the literature between brain MRI and cognitive metrics in MS cohorts with a low disease burden. For example, in five cross-sectional^{18,23–26} and two longitudinal studies,^{2,38} which included between 43 and 81 patients in very early stages of MS, no significant associations between MRI lesion burden and cognitive measures were reported. Four of

these studies also examined the relationships between global or regional brain atrophy and cognitive measures but found no associations.^{2,24–26} Other studies did not find associations between MRI and cognitive measures presumably due to the small sample size and heterogeneity of studied cohorts.^{17,19–21}

This study has several limitations. Cognitive function was assessed by the BICAMS battery and PASAT. While these tests evaluate a number of cognitive domains, including rapid information processing, visuospatial learning and memory, visual scanning, verbal learning and memory, working memory, attention switching, and calculation, several domains such as higher executive functions, visual–spatial ability, or phonemic fluency were not tested.^{1,31} However, the domains tested in the present study are known to be most commonly impaired in MS.^{1,30} A relatively low proportion of patients had abnormal BICAMS outcome (27%). This could be a result of our sample consisting of predominantly patients with a short disease duration and low disease burden. Another limitation is that focal MRI lesions of white matter are only partially reflective of the disseminated pathology in MS.^{3,10,11} Their specific topography rather than volume

may play a role in the pathogenesis of cognitive impairment. More sophisticated nonconventional MRI techniques, such as magnetization transfer ratio, diffusion tensor imaging, proton MRI spectroscopy, and functional MRI measuring various aspects of MS pathology,³ are likely to further improve our understanding of the associations between MRI and cognitive function at different stages of MS. Finally, sufficiently powered longitudinal studies are warranted to investigate the long-term associations between MRI and cognitive changes.

In conclusion, our study suggests that greater structural brain damage corresponds to higher cognitive impairment, especially in patients with a greater preexisting cumulative disease burden, disease duration, or age. Although our results may be not surprising, they have several practical implications that have not been considered in previous research. Firstly, patients' MRI and clinical characteristics should be taken into consideration when interpreting associations between structural and cognitive changes in clinical trials, research studies, and clinical practice.

Our results also emphasize the need for balanced recruitment of participants into clinical trials in terms of radiological disease burden. Finally, in clinical settings, the accumulation of subclinical brain damage in MS cannot be interpreted as "benign disease" since the clinical impact of quantitative brain damage may be delayed. With an increasing number of highly effective disease-modifying treatments,^{39,40} the identification of patients at highest risk of developing clinically apparent cognitive deterioration, with the aim of preserving their cognitive capacity, belongs among the top priorities of effective MS management.

Acknowledgments

The authors thank the patients who participated in this study. The paper was also processed with contribution of long-term institutional support of research activities by Faculty of Informatics and Statistics, University of Economics, Prague.

Author's Contributions

T. Uher helped in study concept and design, data analysis and interpretation, and manuscript preparation. L. Sobisek contributed to data analysis. Z. Seidl and J. Krasensky helped in MRI data analysis. E. Havrdova contributed to study concept and design. M.P. Sormani helped in data interpretation. T. Kalincik contributed to data interpretation and manuscript preparation. D. Horakova helped in study concept and design, data interpretation, and manuscript preparation. M. Vaneckova contributed to MRI data analysis and data interpretation.

Conflict of Interest

T. Uher received financial support for conference travel and honoraria from Biogen Idec, Novartis, Roche, Genzyme, and Merck Serono, as well as support for research activities from Biogen Idec.

L. Sobisek received financial support from Novartis, as well as support from long-term institutional support of research activities by Faculty of Informatics and Statistics, University of Economics, Prague.

Z. Seidl and J. Krasensky received financial support for research activities from Biogen Idec.

E. Kubala Havrdova received speaker honoraria and consultant fees from Biogen Idec, Merck Serono, Novartis, Genzyme, Teva, Actelion, and Receptos, as well as support for research activities from Biogen Idec and Merck Serono.

M.P. Sormani received consulting fees from Novartis, Biogen, Merck Serono, Teva, Genzyme, Roche, and Vertex.

T. Kalincik served on an advisory scientific board for Roche, Novartis, Merck, and Biogen, received conference travel support and/or speaker honoraria from WebMD Global, Novartis, Biogen, Sanofi, Genzyme, Teva, BioCSL, and Merck and received research support from Biogen.

D. Horakova received compensation for travel, speaker honoraria, and consultant fees from Biogen Idec, Novartis, Merck Serono, Bayer Shering, and Teva, as well as support for research activities from Biogen Idec.

M. Vaneckova received speaker honoraria and consultant fees from Biogen Idec, Novartis, Merck L. Serono, and Teva, as well as support for research activities from Biogen Idec.

References

1. Benedict RH, Zivadinov R. Risk factors for and management of cognitive dysfunction in multiple sclerosis. *Nat Rev Neurol* 2011;7:332–342.
2. Uher T, Blahova-Dusankova J, Horakova D, et al. Longitudinal MRI and neuropsychological assessment of patients with clinically isolated syndrome. *J Neurol* 2014;261:1735–1744.
3. Rocca MA, Amato MP, De Stefano N, et al. Clinical and imaging assessment of cognitive dysfunction in multiple sclerosis. *Lancet Neurol* 2015;14:302–317.
4. Uher T, Vaneckova M, Sobisek L, et al. Combining clinical and magnetic resonance imaging markers enhances prediction of 12-year disability in multiple sclerosis. *Mult Scler.* 2017;23:51–61.
5. Morrow SA, Drake A, Zivadinov R, et al. Predicting loss of employment over three years in multiple sclerosis: clinically meaningful cognitive decline. *Clin Neuropsychol.* 2010;24:1131–1145.

6. Blahova Dusankova J, Kalincik T, Dolezal T, et al. Cost of multiple sclerosis in the Czech Republic: the COMS study. *Mult Scler*. 2012;18:662–668.
7. Langdon DW. Cognition in multiple sclerosis. *Curr Opin Neurol* 2011;24:244–249.
8. Rao SM, Leo GJ, Haughton VM, et al. Correlation of magnetic resonance imaging with neuropsychological testing in multiple sclerosis. *Neurology* 1989;39(2 Pt 1):161–166.
9. Rovaris M, Filippi M, Falautano M, et al. Relation between MR abnormalities and patterns of cognitive impairment in multiple sclerosis. *Neurology* 1998;50:1601–1608.
10. Mesaros S, Rocca MA, Riccitelli G, et al. Corpus callosum damage and cognitive dysfunction in benign MS. *Hum Brain Mapp* 2009;30:2656–2666.
11. Daams M, Steenwijk MD, Schoonheim MM, et al. Multi-parametric structural magnetic resonance imaging in relation to cognitive dysfunction in long-standing multiple sclerosis. *Mult Scler* 2015;22:608–619.
12. Calabrese M, Agosta F, Rinaldi F, et al. Cortical lesions and atrophy associated with cognitive impairment in relapsing-remitting multiple sclerosis. *Arch Neurol* 2009;66:1144–1150.
13. Nielsen AS, Kinkel RP, Madigan N, et al. Contribution of cortical lesion subtypes at 7T MRI to physical and cognitive performance in MS. *Neurology* 2013;81:641–649.
14. Riccitelli G, Rocca MA, Pagani E, et al. Cognitive impairment in multiple sclerosis is associated to different patterns of gray matter atrophy according to clinical phenotype. *Hum Brain Mapp* 2011;32:1535–1543.
15. Geurts JJ, Calabrese M, Fisher E, Rudick RA. Measurement and clinical effect of grey matter pathology in multiple sclerosis. *Lancet Neurol* 2012;11:1082–1092.
16. Houtchens MK, Benedict RH, Killiany R, et al. Thalamic atrophy and cognition in multiple sclerosis. *Neurology* 2007;69:1213–1223.
17. Fulton JC, Grossman RI, Udupa J, et al. MR lesion load and cognitive function in patients with relapsing-remitting multiple sclerosis. *AJNR Am J Neuroradiol* 1999;20:1951–1955.
18. Zivadinov R, De Masi R, Nasuelli D, et al. MRI techniques and cognitive impairment in the early phase of relapsing-remitting multiple sclerosis. *Neuroradiology* 2001;43:272–278.
19. Lin X, Tench CR, Morgan PS, Constantinescu CS. Use of combined conventional and quantitative MRI to quantify pathology related to cognitive impairment in multiple sclerosis. *J Neurol Neurosurg Psychiatry* 2008;79:437–441.
20. Heesen C, Schulz KH, Fiehler J, et al. Correlates of cognitive dysfunction in multiple sclerosis. *Brain Behav Immun* 2010;24:1148–1155.
21. Hulst HE, Steenwijk MD, Versteeg A, et al. Cognitive impairment in MS: impact of white matter integrity, gray matter volume, and lesions. *Neurology* 2013;80:1025–1032.
22. Hulst HE, Gehring K, Uitdehaag BM, et al. Indicators for cognitive performance and subjective cognitive complaints in multiple sclerosis: a role for advanced MRI? *Mult Scler*. 2014;20:1131–1134.
23. Achiron A, Barak Y. Cognitive impairment in probable multiple sclerosis. *J Neurol Neurosurg Psychiatry* 2003;74:443–446.
24. Maghzi AH, Revirajan N, Julian LJ, et al. Magnetic resonance imaging correlates of clinical outcomes in early multiple sclerosis. *Mult Scler Relat Disord* 2014;3:720–727.
25. Nourbakhsh B, Nunan-Saah J, Maghzi AH, et al. Longitudinal associations between MRI and cognitive changes in very early MS. *Mult Scler Relat Disord* 2016;5:47–52.
26. Hyncicova E, Vyhnaek M, Kalina A, et al. Cognitive impairment and structural brain changes in patients with clinically isolated syndrome at high risk for multiple sclerosis. *J Neurol* 2017;264:482–493.
27. Mollison D, Sellar R, Bastin M, et al. The clinico-radiological paradox of cognitive function and MRI burden of white matter lesions in people with multiple sclerosis: a systematic review and meta-analysis. *PLoS ONE* 2017;12:e0177727.
28. Uher T, Krasensky J, Vaneckova M, et al. A novel semiautomated pipeline to measure brain atrophy and lesion burden in multiple sclerosis: a long-term comparative study. *J Neuroimaging* 2017;. <https://doi.org/10.1111/jon.12445>.
29. Kalincik T, Vaneckova M, Tyblova M, et al. Volumetric MRI markers and predictors of disease activity in early multiple sclerosis: a longitudinal cohort study. *PLoS ONE* 2012;7:e50101.
30. Benedict RH, Amato MP, Boringa J, et al. Brief International Cognitive Assessment for MS (BICAMS): international standards for validation. *BMC Neurology*. 2012;12:55.
31. Dusankova JB, Kalincik T, Havrdova E, Benedict RH. Cross cultural validation of the minimal assessment of cognitive function in multiple sclerosis (MACFIMS) and the brief international cognitive assessment for multiple sclerosis (BICAMS). *Clin Neuropsychol* 2012;26:1186–1200.
32. Meyer-Moock S, Feng YS, Maeurer M, et al. Systematic literature review and validity evaluation of the Expanded Disability Status Scale (EDSS) and the Multiple Sclerosis Functional Composite (MSFC) in patients with multiple sclerosis. *BMC Neurology*. 2014;25:58.
33. Barkhof F, Filippi M. MRI—the perfect surrogate marker for multiple sclerosis? *Nat Rev Neurol* 2009;5:182–183.
34. Satz P. Brain reserve capacity on symptom onset after brain injury: a formulation and review of evidence for threshold theory. *Neuropsychology*. 1993;7:273–295.
35. Rudick RA, Fisher E, Lee JC, et al. Use of the brain parenchymal fraction to measure whole brain atrophy

in relapsing-remitting MS. Multiple Sclerosis Collaborative Research Group. *Neurology* 1999;53:1698–1704.

36. Stern Y. What is cognitive reserve? Theory and research application of the reserve concept. *J Int Neuropsychol Soc* 2002;8:448–460.
37. Uher T, Vaneckova M, Sormani MP, et al. Identification of multiple sclerosis patients at highest risk of cognitive impairment using an integrated brain magnetic resonance imaging assessment approach. *Eur J Neurol* 2017;24:292–301.
38. Zivadinov R, Sepcic J, Nasuelli D, et al. A longitudinal study of brain atrophy and cognitive disturbances in the early phase of relapsing-remitting multiple sclerosis. *J Neurol Neurosurg Psychiatry* 2001;70:773–780.
39. De Stefano N, Tomic D, Radue EW, et al. Effect of fingolimod on diffuse brain tissue damage in relapsing-remitting multiple sclerosis patients. *Mult Scler Relat Disord* 2016;7:98–101.
40. Arnold DL, Fisher E, Brinar VV, et al. Superior MRI outcomes with alemtuzumab compared with

subcutaneous interferon beta-1a in MS. *Neurology* 2016;87:1464–1472.

Supporting Information

Additional Supporting Information may be found online in the supporting information tab for this article:

Figure S1. (A) The strength of associations between brain T2 lesion volume (transformed with Cox–Box transformation) and Symbol Digit Modalities Test scores in four multiple sclerosis subpopulations according their Brain Parenchymal Fraction quartiles. (B) Example of the graphical presentation.

Table S1. Structure of the adjusted multivariable models with interaction term.

Table S2. Adjusted multivariable linear regression models between cognitive measures as the dependent variable and the independent demographic, clinical and MRI variables.

Table S3. Correlations between MRI and cognitive measures in females and males.



Minerva Access is the Institutional Repository of The University of Melbourne

Author/s:

Uher, T; Krasensky, J; Sobisek, L; Blahova Dusankova, J; Seidl, Z; Kubala Havrdova, E;
Sormani, MP; Horakova, D; Kalincik, T; Vaneckova, M

Title:

Cognitive clinico-radiological paradox in early stages of multiple sclerosis

Date:

2018-01-01

Citation:

Uher, T., Krasensky, J., Sobisek, L., Blahova Dusankova, J., Seidl, Z., Kubala Havrdova, E.,
Sormani, M. P., Horakova, D., Kalincik, T. & Vaneckova, M. (2018). Cognitive clinico-
radiological paradox in early stages of multiple sclerosis. ANNALS OF CLINICAL AND
TRANSLATIONAL NEUROLOGY, 5 (1), pp.81-91. <https://doi.org/10.1002/acn3.512>.

Persistent Link:

<http://hdl.handle.net/11343/255571>

File Description:

Published version

License:

CC BY-NC-ND