

## Bifurcation treatment with novel, highly flexible drug-eluting coronary stents in all-comers: 2-year outcome in patients of the DUTCH PEERS trial

Liefke C. van der Heijden<sup>1</sup> · Marlies M. Kok<sup>1</sup> · Ming Kai Lam<sup>1</sup> · Peter W. Danse<sup>2</sup> · Alexander R. Schramm<sup>3</sup> · Gillian A. J. Jessurun<sup>3</sup> · R. Melvyn Tjon Joe Gin<sup>2</sup> · K. Gert van Houwelingen<sup>1</sup> · Raymond W. M. Hautvast<sup>4</sup> · Gerard C. M. Linssen<sup>5,6</sup> · Hanim Sen<sup>1</sup> · Marije M. Löwik<sup>1</sup> · Maarten J. IJzerman<sup>7</sup> · Carine J. M. Doggen<sup>7</sup> · Clemens von Birgelen<sup>1,7</sup>

Received: 30 June 2015 / Accepted: 18 August 2015 / Published online: 2 September 2015  
© The Author(s) 2015. This article is published with open access at Springerlink.com

### Abstract

**Background** Percutaneous coronary intervention (PCI) in bifurcated lesions with second-generation drug-eluting stents (DES) was associated with increased myocardial infarction (MI) rates. Flexible stent designs that accommodate well to vessel tapering may be of benefit in challenging anatomies such as bifurcated target lesions, but so far data are scarce.

**Methods** We analyzed the 2-year follow-up data of the DUTCH PEERS (TWENTE II) trial, which randomized 1811 all-comer patients to PCI with newer generation resolute integrity zotarolimus-eluting (Medtronic) or promus element everolimus-eluting stents (Boston Scientific). In bifurcated lesions, provisional stenting was generally performed. Target vessel failure is a composite endpoint,

consisting of cardiac death, target vessel MI, or target vessel revascularization.

**Results** Patients with at least one bifurcated lesion ( $n = 465$ , 25.7 %) versus patients with non-bifurcated target lesions only ( $n = 1346$ , 74.3 %) showed similar rates of clinical endpoints including target vessel failure (9.2 versus 7.9 %,  $p = 0.36$ ) and definite stent thrombosis (0.4 versus 1.0 %,  $p = 0.38$ ). Target vessel MI was more common in patients with bifurcated lesions (3.4 versus 1.6 %,  $p = 0.02$ ); but after multivariate analysis with propensity score adjustment, bifurcation treatment was found not to be an independent predictor of target vessel MI (HR 1.40, 95 % CI 0.71–2.76;  $p = 0.34$ ). Among patients with bifurcated lesions, DES type and side-branch size did not affect outcome, but periprocedural MI occurred more often after two-stent approaches (9.0 versus 2.1 %;  $p = 0.002$ ).

**Conclusion** All-comer patients treated for bifurcated and non-bifurcated target lesions showed similar and low rates of clinical endpoints, suggesting that the DES used are efficacious and safe for treating bifurcated target lesions.

**Keywords** Bifurcation/coronary bifurcation · Drug-eluting stents (DES) · Percutaneous coronary intervention (PCI) · DUTCH PEERS (TWENTE II) randomized clinical trial · Promus element platinum–chromium everolimus-eluting stent (PE-PtCr-EES) · Resolute integrity cobalt–chromium zotarolimus-eluting stent (RI-CoCr-ZES)

✉ Clemens von Birgelen  
c.vonbirgelen@mst.nl

<sup>1</sup> Department of Cardiology, Thoraxcentrum Twente, Medisch Spectrum Twente, Haaksbergerstraat 55, 7513 ER Enschede, The Netherlands

<sup>2</sup> Department of Cardiology, Rijnstate Hospital, Arnhem, The Netherlands

<sup>3</sup> Department of Cardiology, Scheper Hospital, Emmen, The Netherlands

<sup>4</sup> Department of Cardiology, Medisch Centrum Alkmaar, Alkmaar, The Netherlands

<sup>5</sup> Department of Cardiology, Ziekenhuisgroep Twente, Almelo, The Netherlands

<sup>6</sup> Department of Cardiology, Ziekenhuisgroep Twente, Hengelo, The Netherlands

<sup>7</sup> Department Health Technology and Services Research, MIRA-Institute for Biomedical Technology and Technical Medicine, University of Twente, Enschede, The Netherlands

### Abbreviations

DES Drug-eluting stent  
MI Myocardial infarction  
PCI Percutaneous coronary intervention  
PMI Periprocedural MI

## Introduction

Stenting of bifurcated target lesions is among the most challenging procedures in the field of percutaneous coronary intervention (PCI) [1, 2]. In bifurcated lesions, the introduction of the first generation of drug-eluting stents (DES) reduced the need for repeat revascularization as compared to the previously used bare metal stents [2–8]. DES of the second generation, which employed coatings with an improved biocompatibility and thinner struts than the first generation, have shown favorable clinical results in both broad patient populations [9–18] and bifurcated lesions [19–21]. Despite generally encouraging clinical outcomes, the rate of myocardial infarction (MI), in particular of periprocedural MI (PMI), was still higher following stenting of bifurcated lesions as compared to non-bifurcated lesions [20, 21].

Recently, novel DES have been developed with thinner struts and/or more flexible stent designs that accommodate well to vessel tapering, which may be of benefit in challenging anatomies such as bifurcated lesions [22, 23]. The DUTCH PEERS randomized trial compares two such DES in an all-comer patient population and has shown similar and favorable results for both devices up to 2-year follow-up in the overall study population [24, 25].

While the use of highly flexible DES has resulted in an overall low MI rate [24], it is unknown whether the implantation of such modern stents may still be associated with an increased risk of MI in bifurcated target lesions. In the present study, we assessed the hypothesis that there may be no difference in safety and efficacy of these flexible DES in treating patients with bifurcated versus non-bifurcated target lesions. In addition, among patients with bifurcated lesions, we evaluated the potential impact of stent type, side-branch size, kissing-balloon inflation, and technical complexity of the procedure on 2-year clinical outcome.

## Methods

### Patient population and study design

The present study was performed using the 2-year follow-up data of the randomized, patient-blinded, multicenter DUTCH PEERS trial [25]. Details of the DUTCH PEERS (TWENTE II) trial (ClinicalTrials.gov NCT01331707) have previously been reported [24]. In brief, the trial compares (1:1 randomization) the resolute integrity zotarolimus-eluting cobalt–chromium stent (Medtronic Vascular, Santa Rosa, CA) and the promus element everolimus-eluting platinum–chromium stent (Boston Scientific, Natick, MA) in 1811 all-comer patients. Patients were enrolled between November 25, 2010 and May 24, 2012. The trial

complies with the Declaration of Helsinki and was approved by the Medical Ethics Committee Twente and the institutional review boards of all participating centers. All patients provided written informed consent. Interventional procedures and application of concomitant medication were performed in accordance to medical guidelines, clinical standards, and the physician's judgment. The generally recommended approach of bifurcation lesion treatment was provisional stenting, but the technique of stenting, medical treatment strategy, and use of final kissing-balloon inflation were left at the operator's discretion [24].

### Clinical follow-up, monitoring, adjudication, and angiographic analysis

A detailed description of the 2-year follow-up data has previously been reported [25]. Data monitoring was performed by the independent contract research organization (CRO) Diagram (Zwolle, the Netherlands). The independent CRO Cardialysis (Rotterdam, the Netherlands) performed the processing of clinical outcome data and clinical event adjudication. Experienced angiographic analysts from Thoraxcentrum Twente, blinded for the stent type and clinical outcome, performed offline quantitative coronary angiographic analyses according to current standards for all patients from the four study centers (Qangio XA 7.2, Medis, Leiden, the Netherlands).

### Data analysis

For the purpose of the present analysis, patients were categorized into patients with at least one bifurcated target lesion versus patients with non-bifurcated lesions. A relevant side-branch was defined, according to the definition in the SYNTAX score, as a junction of a main vessel and a side-branch with minimum lumen diameter  $\geq 1.5$  mm (after intracoronary administration of nitrates and before PCI), as measured by quantitative coronary angiography [26]. Further analyses among patients with bifurcated lesions involved comparisons between (1) the two allocated stents; (2) bifurcated lesions with side-branch  $\geq 2.0$  mm versus side-branch  $< 2.0$  mm, as measured by quantitative coronary angiography; (3) the use of final kissing-balloon inflation versus no final kissing; and (4) single versus two-stent approach.

### Clinical endpoints

Clinical endpoints were defined according to the Academic Research Consortium (ARC), including the addendum on myocardial infarction [27, 28]. Death was considered cardiac, unless an evident non-cardiac cause could be

established. Myocardial infarction (MI) was defined by any creatine kinase concentration of more than double the upper limit of normal with elevated values of a confirmatory cardiac biomarker. PMI was defined as target vessel MI within 48 h after PCI. Stent thrombosis was classified according to the ARC definitions. The composite endpoint target vessel failure was defined as cardiac death, target vessel MI, or clinically driven target vessel revascularization. Target lesion failure was defined as a composite of cardiac death, target vessel MI, and clinically indicated target lesion revascularization. A patient-oriented composite endpoint consisted of all-cause death, any MI, and any repeat revascularization. Major adverse cardiac events were classified as a composite of all-cause death, any MI, emergent coronary artery bypass grafting, and clinically indicated target lesion revascularization.

### Statistical analysis

Data were reported as frequencies and percentages for dichotomous and categorical variables, as mean  $\pm$  standard deviation for continuous normally distributed variables and as median and inter-quartile range for not normally distributed variables. Chi-square test and Fisher's exact test were used as appropriate. Differences between groups in continuous variables were assessed with the Student's *t* test or the Wilcoxon rank-sum test. The Kaplan–Meier method was used to calculate the time to clinical endpoint and the Log-rank test was applied to compare groups. Parameters were considered as potential

confounders if associations were found with a *p* value  $\leq 0.15$  in univariate analyses. For adjustment of potential confounders, propensity score analysis was used. The propensity score was estimated using multiple logistic regression analysis. Gender, clinical syndrome, RCA treatment, LAD treatment, multivessel disease, small vessel treatment, total stent length, number of stents per patient, postdilatation, and lesion length longer than 27 mm were used to calculate the propensity score for having a bifurcated target lesion. A multivariate Cox regression model, including the propensity score as independent variable, was then used to adjust for the propensity score. All *p* values and confidence intervals were two-sided and *p* values  $< 0.05$  were considered significant. Data analysis was performed with SPSS (version 22.0, SPSS Inc., Chicago, IL, USA).

## Results

### Baseline, lesion, and procedural characteristics

Of all 1811 randomized trial participants, 465 patients (25.7 %) were treated for at least one bifurcated lesion. Patients with bifurcated lesions were predominantly men, presented more often with stable angina, and underwent more often treatment of multiple vessels and lesions in left anterior descending arteries (Tables 1, 2). Most patients (83.2 %) were treated with single stents. If a two-stent technique was applied, T-stenting (73.1 %) was generally

**Table 1** Patient characteristics of all study patients comparing patients with bifurcated versus non-bifurcated target lesions

Patient characteristics	All patients <i>n</i> = 1811		<i>p</i>
	BL <i>n</i> = 465	Non-BL <i>n</i> = 1346	
Age (years)	63.8 $\pm$ 11.3	64.0 $\pm$ 10.7	0.74
Female	100 (21.5)	389 (28.9)	0.002
BMI (kg/m <sup>2</sup> )	27.9 $\pm$ 4.5*	28.0 $\pm$ 4.8 <sup>†</sup>	0.71
Diabetes mellitus	83 (17.8)	241 (17.9)	0.98
Previous MI	112 (24.1)	285 (21.2)	0.19
Previous PCI	85 (18.3)	264 (19.6)	0.53
Previous CABG	42 (9.0)	131 (9.7)	0.66
Clinical syndrome at index PCI procedure			
Stable angina pectoris	218 (46.9)	531 (39.5)	0.005
Unstable angina pectoris	57 (12.3)	188 (14.0)	
Non-ST-elevation myocardial infarction	118 (25.4)	329 (24.4)	
ST-elevation myocardial infarction	72 (15.5)	298 (22.1)	

Values are mean  $\pm$  SD or *n* (%)

BL bifurcated target lesion, CABG coronary artery bypass grafting, MI myocardial infarction, non-BL non-bifurcated target lesion, PCI percutaneous coronary intervention

\* *n* = 375, <sup>†</sup> *n* = 1049

**Table 2** Lesion and procedural characteristics of all study patients comparing patients with bifurcated versus non-bifurcated target lesions

Lesion/procedural characteristics	All patients ( <i>n</i> = 1811)		<i>p</i>
	BL <i>n</i> = 465	Non-BL <i>n</i> = 1346	
Multivessel treatment	123 (26.5)	173 (12.9)	<0.001
Treated coronary vessels			
Right coronary artery	91 (19.6)	578 (42.9)	<0.001
Left anterior descending artery	336 (72.3)	518 (38.5)	<0.001
Circumflex artery	148 (31.8)	375 (27.9)	0.10
De novo lesion	423 (91.0)	1204 (89.5)	0.35
Severe calcification	106 (22.8)	301 (22.4)	0.85
At least one chronic total occlusion	19 (4.1)	57 (4.2)	0.89
At least one in-stent restenosis	17 (3.7)	38 (2.8)	0.37
At least one small vessel	298 (64.1)	770 (57.2)	0.01
At least one lesion length >27 mm	95 (20.4)	223 (16.6)	0.06
Medina classification of bifurcation lesions			
0.0.1	37 (8.0)		
0.1.0	67 (14.4)		
0.1.1	21 (4.5)		
1.0.0	55 (11.8)		
1.0.1	39 (8.4)		
1.1.0	148 (31.8)		
1.1.1	98 (21.1)		
Total stent length	36.0 (22.0–56.0)	28.0 (18.0–48.0)	<0.001
Number of stents per patient	2.1 (1.3)	1.7 (1.0)	<0.001
Longest lesion length (mm)	19.4 (12.0)	18.3 (12.1)	0.09
Degree of stenosis (pre-PCI)*	70.2 (16.9)	71.1 (18.2)	0.36
Residual in-stent stenosis (post-PCI)*	17.9 (8.7)	17.3 (8.1)	0.22
Postdilation	397 (85.4)	1006 (74.7)	<0.001
Stenting approach			
1-stent	387 (83.2)		
2-stent	78 (16.8)		
T-stenting	57 (73.1)		
(Mini)crush	14 (17.9)		
Culotte	2 (2.6)		
Other	5 (6.4)		
Final kissing-balloon inflation	139 (29.9)		

Values are mean  $\pm$  SD, *n* (%), or median (IQR)

BL bifurcated target lesion, non-BL non-bifurcated target lesion, PCI percutaneous coronary intervention

\* A reference vessel diameter of <2.75 mm is defined as a small vessel

† In the case of multiple target lesions, the most severe diameter stenosis is presented

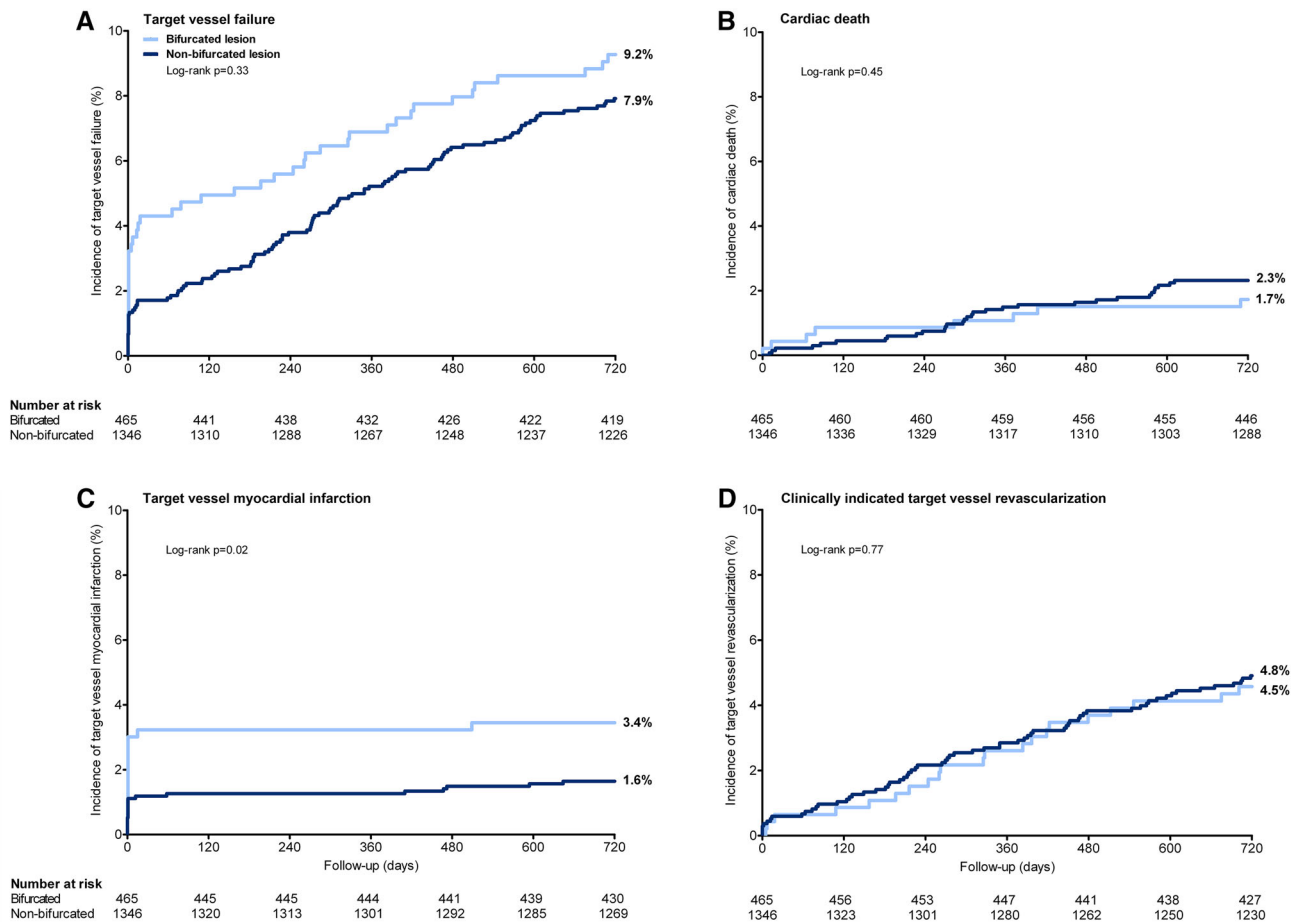
preferred above (mini-)crush (17.9 %), culotte (2.6 %), and other two-stent approaches (6.4 %) (Table 2). Final kissing-balloon inflation was performed in 139 (29.9 %) patients with bifurcated target lesions.

Among all patients with bifurcated lesions, 244 (52.5 %) were treated with resolute integrity and 221 (47.5 %) with promus element stents. The characteristics of patients, lesions, and procedures did not differ between the two stent groups (data not shown) except for a higher

rate of kissing-balloon inflation in resolute integrity stents (36.1 versus 23.1 %; *p* = 0.002).

### Clinical event rates and multivariate analysis at 2-year follow-up

Two-year follow-up data were available for 1810 (99.9 %) patients. Time-to-event analysis of patients with bifurcated lesions and patients with non-bifurcated lesions showed no



**Fig. 1** Kaplan–Meier curves of the composite clinical endpoint target vessel failure and its individual components: **a** target vessel failure; **b** cardiac death; **c** target vessel revascularization; **d** clinically indicated target vessel revascularization

significant differences in the rates of target vessel failure (9.2 versus 7.9 %;  $p$  logrank = 0.33), cardiac death (1.7 versus 2.3 %;  $p$  logrank = 0.45), and target vessel revascularization (4.5 versus 4.8 %;  $p$  logrank = 0.77) (Fig. 1). Target vessel MI was higher in patients with bifurcation lesions (3.4 versus 1.6 %;  $p$  logrank = 0.02) (Fig. 1; Table 3), but after multivariate analysis with propensity score adjustment, bifurcation treatment was found not to be an independent predictor of target vessel MI (HR 1.40, 95 % CI 0.71–2.76;  $p = 0.34$ ). The rates of definite stent thrombosis after 2 years were low and comparable for both patients with bifurcated and non-bifurcated lesions (0.4 versus 1.0 %;  $p = 0.38$ ).

### Clinical outcome among patients with bifurcated lesions

Among patients with bifurcated target lesions, the rates of various clinical endpoints were similar for patients treated with resolute integrity versus promus element stents (Table 4). There was also no significant difference

in any clinical endpoint between bifurcated lesions with side-branch  $\geq 2.0$  versus  $< 2.0$  mm, and between the use of final kissing-balloon inflation versus no use of final kissing balloons (Table 4; Fig. 2). The use of a two-stent approach resulted in significantly higher PMI rates than the use of a single stent (9.0 versus 2.1 %;  $p = 0.002$ ).

## Discussion

### Major findings

In the present subanalysis of the DUTCH PEERS randomized trial, all-comer patients treated for at least one bifurcated lesion versus patients with non-bifurcated target lesions showed similar 2-year rates of various clinical endpoints. Target vessel MI was more common in patients with bifurcation lesions (3.4 versus 1.6 %); but after multivariate analysis, bifurcation treatment was found not to be an independent predictor of target vessel MI. Among

**Table 3** Two-year clinical outcome in patients with bifurcated lesions versus non-bifurcated lesions

	All patients <i>n</i> = 1810		<i>p</i>
	BL <i>n</i> = 465	Non-BL <i>n</i> = 1345	
Cardiac death	8 (1.7)	31 (2.3)	0.45
Target vessel myocardial infarction	16 (3.4)	22 (1.6)	0.02
Periprocedural myocardial infarction*	15 (3.2)	15 (1.1)	0.002
Target vessel revascularization <sup>†</sup>	21 (4.5)	65 (4.8)	0.78
Target lesion revascularization <sup>†</sup>	16 (3.4)	50 (3.7)	0.78
Definite stent thrombosis	2 (0.4)	13 (1.0)	0.38
Definite or probable stent thrombosis	4 (0.9)	16 (1.2)	0.56
Target vessel failure	43 (9.2)	106 (7.9)	0.36
Target lesion failure	38 (8.2)	93 (6.9)	0.37
Major adverse cardiac events	43 (9.2)	112 (8.3)	0.54
Patient-oriented composite endpoint	60 (12.9)	168 (12.5)	0.82

Values are *n* (%)

Two-year follow-up was available for 1810 of 1811 patients (99.9 %)

BL bifurcated target lesion, Non-BL non-bifurcated target lesion

\* Periprocedural myocardial infarction is a sub-classification of (any) target vessel myocardial infarction;  
<sup>†</sup> clinically indicated

patients with bifurcated lesions, we found no impact of DES type, side-branch size, or final kissing-balloon inflation on various clinical endpoints. PMI was more common among patients with bifurcation lesions treated with a two-stent technique. Our findings suggest that the novel, flexible DES used are efficacious and safe for treating bifurcated target lesions.

### Stent design and outcome of PCI in bifurcated lesions

Previous studies with second-generation DES examined devices with the same drug-eluting coatings, but rather different designs of the stent platforms, as used in the devices of the present study [20, 21]. In a subanalysis of the TWENTE trial, patients treated for bifurcation lesions with second-generation Resolute (Medtronic) or Xience V stents (Abbott Vascular Devices, Santa Clara, CA) showed favorable 3-year outcomes that were similar to the outcomes in patients with non-bifurcated lesions (e.g., target vessel failure rate 13.1 versus 12.6 %), but in patients with bifurcated lesions the PMI rate was more than twice as high (6.9 versus 3.1 %;  $p < 0.01$ ) [20]. These data corroborated the results of a substudy of the RESOLUTE All Comers trial, which had also reported a higher PMI rate in 392 patients with bifurcated lesions (6.5 versus 3.4 %; unadjusted  $p = 0.009$ ) [21]. In a pooled analysis of the RESOLUTE All Comers trial and the RESOLUTE International Registry, the incidence of target lesion failure and the individual components thereof was higher during the

first 30 days after PCI of patients who were treated for bifurcation lesions as compared to patients treated for non-bifurcated lesions. However, during the remainder of the 3-year follow-up, clinical event rates were similar for both patient groups [29]. PMI in treatment of bifurcated lesions may result from (stent-induced) closure of side-branches, flow-limiting dissections, distal (micro)embolization of atherothrombotic debris, and the occurrence of slow flow or no-reflow [20, 30].

The development of newer-generation DES and the progression into devices with highly flexible stent platforms have reduced the need for repeat revascularization and the rate of target vessel MI following PCI of bifurcated lesions [3–9, 11, 19–22, 31]. Burzotta et al. used virtual bench tests to assess the impact of technical characteristics of DES platforms on stenting in bifurcated lesions, showing that technical features of DES platforms lead to differences in response to similar procedural steps of provisional stenting, such as final kissing-balloon inflation [23]. Therefore, technical characteristics of stents should be taken into account in the selection process of the most appropriate DES for treatment of bifurcated lesions [23].

Both resolute integrity and promus element stents have demonstrated favorable results in the all-comer patient population of the DUTCH PEERS randomized trial [24]. The present study of patients with bifurcated lesions has shown similar rates of various clinical endpoints for both stent groups. The baseline characteristics of patients with bifurcated lesions in both DES arms were comparable, but in promus element stents final kissing-balloon inflation was

**Table 4** Two-year clinical outcome in patients among patients treated for bifurcated lesions

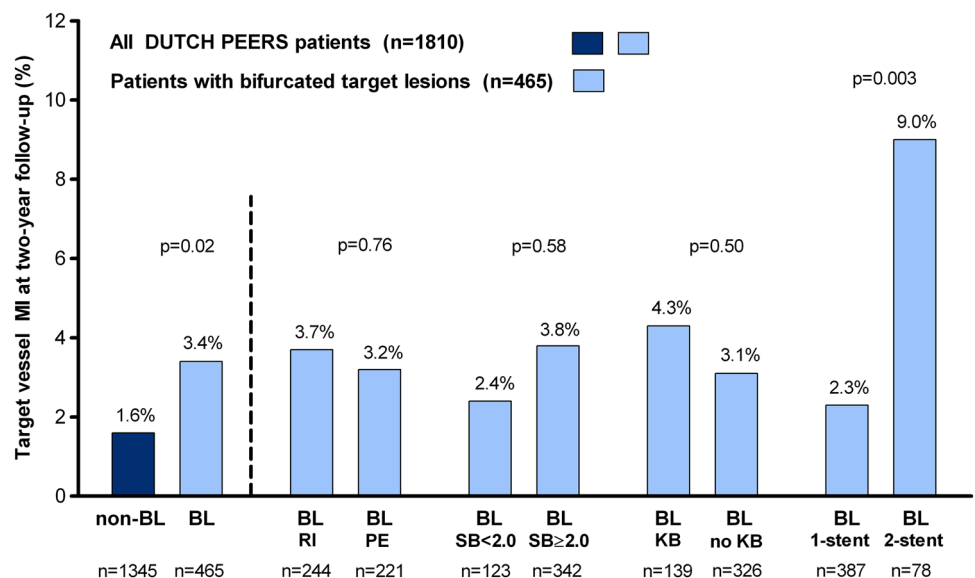
Patient characteristics	Stent used <i>n</i> = 465			Maximum side-branch (SB) diameter (mm) <i>n</i> = 465			Kissing-balloon inflation <i>n</i> = 465			Stenting approach <i>n</i> = 465		
	Resolute integrity <i>n</i> = 244	Promus element <i>n</i> = 221	<i>p</i>	SB < 2.0 <i>n</i> = 123	SB ≥ 2.0 <i>n</i> = 342	<i>p</i>	KB <i>n</i> = 139	No KB <i>n</i> = 326	<i>p</i>	1-Stent <i>n</i> = 387	2-Stent <i>n</i> = 78	<i>p</i>
Cardiac death	4 (1.6)	4 (1.8)	1.00	0	8 (2.3)	0.12	1 (0.7)	7 (2.1)	0.45	7 (1.8)	1 (1.3)	1.00
Target vessel myocardial infarction	9 (3.7)	7 (3.2)	0.76	3 (2.4)	13 (3.8)	0.58	6 (4.3)	10 (3.1)	0.50	9 (2.3)	7 (9.0)	0.003
Periprocedural myocardial infarction*	9 (3.7)	6 (2.7)	0.55	3 (2.4)	12 (3.5)	0.57	6 (4.3)	9 (2.8)	0.39	8 (2.1)	7 (9.0)	0.002
Target vessel revascularization†	12 (4.9)	9 (4.1)	0.66	7 (5.7)	14 (4.1)	0.46	4 (2.9)	17 (5.2)	0.27	5 (3.6)	17 (5.2)	0.45
Target lesion revascularization†	10 (4.1)	6 (2.7)	0.41	7 (5.7)	9 (2.6)	0.11	4 (2.9)	12 (3.7)	0.88	15 (3.9)	2 (0.5)	0.75
Definite stent thrombosis	1 (0.4)	1 (0.5)	1.00	0	2 (0.6)	1.00	0	2 (0.6)	1.00	2 (0.5)	0	1.00
Definite or probable stent thrombosis	2 (0.8)	2 (0.9)	1.00	0	4 (1.2)	0.58	1 (0.7)	3 (0.9)	1.00	3 (0.8)	1 (1.3)	0.52
Target vessel failure	24 (9.8)	19 (8.6)	0.65	10 (8.1)	33 (9.6)	0.62	11 (7.9)	32 (9.8)	0.52	32 (8.3)	11 (14.1)	0.11
Target lesion failure	22 (9.0)	16 (7.2)	0.49	10 (8.1)	28 (8.2)	0.98	11 (7.9)	27 (8.3)	0.89	28 (7.2)	10 (12.8)	0.10
Major adverse cardiac events	24 (9.8)	19 (8.6)	0.65	10 (8.1)	33 (9.6)	0.62	12 (8.6)	31 (9.5)	0.77	32 (8.3)	11 (14.1)	0.11
Patient-oriented composite endpoint	33 (13.5)	27 (12.2)	0.68	12 (9.8)	48 (14.0)	0.23	13 (9.4)	47 (14.4)	0.14	47 (12.1)	13 (16.7)	0.28

Values are *n* (%)

KB final kissing-balloon inflation, SB side-branch

\* Periprocedural myocardial infarction is a sub-classification of (any) target vessel myocardial infarction; † clinically indicated

**Fig. 2** Target vessel MI rate at 2-year follow-up. BL bifurcated target lesion, KB final kissing-balloon inflation, MI myocardial infarction, PE promus element, RI resolute integrity, SB side-branch. Two-year follow-up was available for 1810 of 1811 patients (99.9 %)



less often performed. As the actual motives of the operators were not documented in this context, we can only speculate that knowledge about the somewhat increased risk of longitudinal deformation of the promus element stent [22] might have held some operators back from performing final simultaneous kissing-balloon inflations.

### Final kissing-balloon inflation

The potential impact of a final kissing-balloon inflation on clinical outcome following stenting of bifurcated lesions is still unclear [20, 32–34]. Niemelä et al. investigated the use of routine final kissing-balloon inflation after successful stenting of the main branch with a single stent. Despite a reduced rate of angiographic side-branch (re)stenosis following kissing-balloon inflation, clinical outcome (PMI was not included) was similar for patients treated with versus without final kissing-balloon inflation [32]. Three-year outcome data of the TWENTE trial have also shown similar target vessel failure rates in patients with bifurcated lesions who were treated with or without final kissing-balloon inflation [20], while final kissing-balloon inflation was reported to be beneficial following treatment of true bifurcation lesions with single, predominantly first-generation DES in patients with acute coronary syndromes [34]. It is likely that the inconsistent results of final kissing-balloon inflation with different stent types are caused by differences in the specific technical stent characteristics, leading to different stent strut distributions after final kissing-balloon inflation [23].

### Side-branch size

Previous studies of stenting in bifurcations used different criteria to define relevant side-branches and studied dissimilar patient populations, which renders comparison of their event rates difficult [3, 8, 19, 21, 32, 35]. In contrast to several other trials that considered side-branches  $\geq 1.75$  mm [4],  $\geq 2.0$  mm [5, 19, 33, 34, 36–38],  $\geq 2.25$  mm [31, 32, 35], or  $\geq 2.5$  mm [3] as relevant, the present study defined side-branches to be relevant if they had a minimum lumen diameter  $\geq 1.5$  mm by quantitative coronary angiography, as suggested by the investigators of the SYNTAX trial [26]. Nevertheless, when comparing clinical outcome of patients with bifurcated lesions and side-branches  $< 2.0$  mm versus side-branches  $\geq 2.0$  mm, we found no relation between the side-branch size and the risk of various clinical endpoints including target vessel MI.

### Single versus two-stent approach

Previous studies that compared the outcome of bifurcation treatment with two-stent strategies versus the use of a

single stent suggested more often, similar to the results of the present substudy, a higher risk of PMI following two-stent procedures [3, 21, 29, 35, 39]. It has been speculated that during the more complex two-stent procedures the longer duration of vessel instrumentation, the more frequent balloon and stent passages through vessel segments proximal to the bifurcation, and the generally higher frequency of stent postdilation may contribute to the higher PMI risk [35]. A slight disadvantage of the single-stent approach may be the somewhat higher risk of side-branch occlusion after stenting the main branch [37, 40]. Predictors of side-branch occlusion are: a high pre-procedural degree of side-branch stenosis; a calcified side-branch lesion; a long obstructed side-branch segment; proximal disease in the main branch; and treatment for an acute coronary syndrome [40]. In such bifurcation lesions with an increased risk of jeopardizing the side-branch, the straightforward use of a two-stent technique will often increase the likelihood of keeping the side-branch patent [41].

### Limitations

Because of the post hoc nature of the present analysis, the results must be considered hypothesis generating. Nevertheless, in the absence of published data on PCI in bifurcated lesions with these novel, flexible DES, the findings may be of interest. Similar to previous studies [20, 21], the sample size of subgroups among patients with bifurcated lesions was limited. Therefore, the results of subgroup analyses should be interpreted with caution.

### Conclusion

All-comer patients treated for bifurcated and non-bifurcated target lesions showed similar and low rates of clinical endpoints, suggesting that the DES used are efficacious and safe for treating bifurcated target lesions.

**Acknowledgments** The authors thank Dr. M. Brusse-Keizer from Medisch Spectrum Twente in Enschede for statistical advice.

### Compliance with ethical standards

**Conflict of interest** CvB has been consultant to and has received lecture fees or travel expenses from Abbott Vascular, Boston Scientific, and Medtronic; he received lecture fees from MSD and AstraZeneca. The institution has received research grants, provided by Abbott Vascular, Biotronik, Boston Scientific, and Medtronic. MJIJ is consultant to PANAXEA b.v.; he has received payments for lectures from Roche, Pfizer, and Sanofi Aventis. All other authors declare that they have no conflict of interest.

**Funding** This investigator-initiated study was supported by equal grants from Boston Scientific and Medtronic.



**Open Access** This article is distributed under the terms of the Creative Commons Attribution 4.0 International License (<http://creativecommons.org/licenses/by/4.0/>), which permits unrestricted use, distribution, and reproduction in any medium, provided you give appropriate credit to the original author(s) and the source, provide a link to the Creative Commons license, and indicate if changes were made.

## References

- Lassen JF, Holm NR, Stankovic G et al (2014) Percutaneous coronary intervention for coronary bifurcation disease: consensus from the first 10 years of the European Bifurcation Club meetings. *EuroIntervention* 10:545–560
- von Birgelen C, van Houwelingen KG, Lam MK (2014) Coronary bifurcations: still the touchstone of drug-eluting stents and bioresorbable vascular scaffolds? *Rev Esp Cardiol* 67:797–803
- Colombo A, Moses JW, Morice MC et al (2004) Randomized study to evaluate sirolimus-eluting stents implanted at coronary bifurcation lesions. *Circulation* 109:1244–1249
- Thuesen L, Kelbaek H, Klovgaard L et al (2006) Comparison of sirolimus-eluting and bare metal stents in coronary bifurcation lesions: subgroup analysis of the Stenting Coronary Arteries in Non-Stress/Benestent Disease Trial (SCANDSTENT). *Am Heart J* 152:1140–1145
- Colombo F, Biondi-Zoccai G, Infantino V et al (2009) A long-term comparison of drug-eluting versus bare metal stents for the percutaneous treatment of coronary bifurcation lesions. *Acta Cardiol* 64:583–588
- Romagnoli E, De Servi S, Tamburino C et al (2010) Real-world outcome of coronary bifurcation lesions in the drug-eluting stent era: results from the 4314-patient Italian Society of Invasive Cardiology (SICI-GISE) Italian Multicenter Registry on Bifurcations (I-BIGIS). *Am Heart J* 160:535–542
- Tommasino A, Burzotta F, Sciahbasi A et al (2011) Procedural and clinical evaluation of the novel zotarolimus-eluting resolute stent in patients with unselected bifurcated coronary stenosis treated by provisional approach: a multicenter registry. *J Invasive Cardiol* 23:50–54
- Costopoulos C, Latib A, Ferrarello S et al (2013) First versus second-generation drug-eluting stents for the treatment of coronary bifurcations. *Cardiovasc Revasc Med* 14:311–315
- von Birgelen C, Basalus MW, Tandjung K et al (2012) A randomized controlled trial in second-generation zotarolimus-eluting Resolute stents versus everolimus-eluting Xience V stents in real-world patients: the TWENTE trial. *J Am Coll Cardiol* 59:1350–1361
- Kedhi E, Joesoef KS, McFadden E et al (2010) Second-generation everolimus-eluting and paclitaxel-eluting stents in real-life practice (COMPARE): a randomised trial. *Lancet* 375:201–209
- Serruys PW, Silber S, Garg S et al (2010) Comparison of zotarolimus-eluting and everolimus-eluting coronary stents. *N Engl J Med* 363:136–146
- Akin I, Hochadel M, Abdel-Wahab M et al (2013) Clinical outcomes of different first- and second-generation drug-eluting stents in routine clinical practice: results from the prospective multicenter German DES.DE registry. *Clin Res Cardiol* 102:371–381
- Wöhrle J, Rottbauer W, Imhof A (2012) Everolimus-eluting stents for treatment of chronic total coronary occlusions. *Clin Res Cardiol* 101:23–28
- Mehilli J, Richardt G, Valgimigli M et al (2013) Zotarolimus-versus everolimus-eluting stents for unprotected left main coronary artery disease. *J Am Coll Cardiol* 62:2075–2082
- Ndrepepa G, Tada T, Fusaro M et al (2012) Association of coronary atherosclerotic burden with clinical presentation and prognosis in patients with stable and unstable coronary artery disease. *Clin Res Cardiol* 101:1003–1011
- Akin I, Naber C, Sabin G et al (2013) Outcome of percutaneous coronary intervention with drug-eluting stents in unprotected left main versus non-left main native coronary artery disease: results from the prospective multicenter German DES.DE registry. *Clin Res Cardiol* 102:679–686
- Sen H, Lam MK, Tandjung K et al (2014) Impact of previous coronary artery bypass surgery on clinical outcome after percutaneous interventions with second generation drug-eluting stents in TWENTE trial and Non-Enrolled TWENTE registry. *Int J Cardiol* 176:885–890
- Akin I, Nienaber CA, Richardt G et al (2014) Risk factors for clinical events at 1-year follow-up after drug-eluting stent implantation: results from the perspective multicenter German DES.DE registry. *Clin Res Cardiol* 103:363–372
- Pan M, Burzotta F, Trani C et al (2014) Three-year follow-up of patients with bifurcation lesions treated with sirolimus- or everolimus-eluting stents: SEASide and CORpal cooperative study. *Rev Esp Cardiol* 67:797–803
- Lam MK, Sen H, van Houwelingen KG et al (2015) Three-year clinical outcome of patients with bifurcation treatment with second-generation Resolute and Xience V stents in the randomized TWENTE trial. *Am Heart J* 169:69–77
- Diletti R, Garcia-Garcia HM, Bourantas CV et al (2013) Clinical outcomes after zotarolimus and everolimus drug eluting stent implantation in coronary artery bifurcation lesions: insights from the RESOLUTE All Comers Trial. *Heart* 99:1267–1274
- Ormiston JA, Webber B, Webster MW (2011) Stent longitudinal integrity bench insights into a clinical problem. *J Am Coll Cardiol Interv* 4:1310–1317
- Burzotta F, Mortier P, Trani C (2014) Characteristics of drug-eluting stent platforms potentially influencing bifurcated lesion provisional stenting procedure. *EuroIntervention* 10:124–132
- von Birgelen C, Sen H, Lam MK et al (2014) Third-generation zotarolimus-eluting and everolimus-eluting stents in all-comer patients requiring a percutaneous coronary intervention (DUTCH PEERS): a randomised, single-blind, multicentre, non-inferiority trial. *Lancet* 383:413–423
- Sen H, Lam MK, Löwik MM et al (2015) Clinical events and patient-reported chest pain in all-comers treated with resolute integrity and promus element stents: two-year follow-up of the randomized DUTCH PEERS (TWENTE II) trial. *J Am Coll Cardiol Interv* 8:889–899
- Sianos S, Morel MA, Kappetein AP et al (2005) The SYNTAX Score: an angiographic tool grading the complexity of coronary artery disease. *EuroIntervention* 1:219–227
- Cutlip DE, Windecker S, Mehran R et al (2007) Clinical end points in coronary stent trials: a case for standardized definitions. *Circulation* 115:2344–2351
- Vranckx P, Cutlip DE, Mehran R et al (2010) Myocardial infarction adjudication in contemporary all-comer stent trials: balancing sensitivity and specificity. Addendum to the historical MI definitions used in stent studies. *EuroIntervention* 5:871–874
- Ferenc M, Kornowski R, Belardi J et al (2014) Three-year outcomes of percutaneous coronary intervention with next-generation zotarolimus-eluting stents for de novo coronary bifurcation lesions. *J Invasive Cardiol* 26:630–638
- Park DW, Kim YH, Yun SC et al (2004) Impact of the angiographic mechanisms underlying periprocedural myocardial infarction after drug-eluting stent implantation. *Am J Cardiol* 113:1105–1110
- Roversi S, Biondi-Zoccai G, Romagnoli E et al (2013) Early and long-term outlook of percutaneous coronary intervention for

- bifurcation lesions in young patients. *Int J Cardiol* 167:2995–2999
32. Niemelä M, Kervinen K, Erglis A et al (2011) Randomized comparison of final kissing balloon dilatation versus no final kissing balloon dilatation in patients with coronary bifurcation lesions treated with main vessel stenting: the Nordic-Baltic Bifurcation Study III. *Circulation* 123:79–86
  33. Hariki H, Shinke T, Otake H et al (2013) Potential benefit of final kissing balloon inflation after single stenting for the treatment of bifurcation lesions—insights from optical coherence tomography observations. *Circ J* 77:1193–1201
  34. Kim TH, Lee HJ, Jang H et al (2014) Impact of final kissing balloon inflation after simple stent implantation for the treatment of non-left main true coronary bifurcation lesions in patients with acute coronary syndrome. *Int J Cardiol* 177:907–911
  35. Hildick-Smith D, de Belder AJ, Cooter N et al (2010) Randomized trial of simple versus complex drug-eluting stenting for bifurcation lesions: the British Bifurcation Coronary Study: old, new and evolving strategies. *Circulation* 121:1235–1243
  36. Schulz A, Hauschild T, Kleber FX et al (2014) Treatment of coronary de novo bifurcation lesions with DCB only strategy. *Clin Res Cardiol* 103:451–456
  37. Kherada NI, Sartori S, Tomey MI et al (2014) Dedicated two-stent technique in complex bifurcation percutaneous coronary intervention with use of everolimus-eluting stents: the EES-bifurcation study. *Int J Cardiol* 174:13–17
  38. Song PS, Song YB, Yang JH et al (2013) Periprocedural myocardial infarction is not associated with an increased risk of long-term cardiac mortality after coronary bifurcation stenting. *Int J Cardiol* 167:1251–1256
  39. Niccoli G, Ferrante G, Porto I et al (2015) Coronary bifurcation lesions: to stent one branch or both? A meta-analysis of patients treated with drug eluting stents. *Int J Cardiol* 139:80–91
  40. Hahn JY, Chun WJ, Kim JH et al (2013) Predictors and outcomes of side branch occlusion after main vessel stenting in coronary bifurcation lesions: results from the COBIS II Registry (COronary BIfurcation Stenting). *J Am Coll Cardiol* 62:1654–1659
  41. Freixa X, Almasood AA, Asif N et al (2013) Long-term outcomes using a two-stent technique for the treatment of coronary bifurcations. *Int J Cardiol* 168:446–451

Minerva Access is the Institutional Repository of The University of Melbourne

**Author/s:**

van der Heijden, LC; Kok, MM; Lam, MK; Danse, PW; Schramm, AR; Jessurun, GAJ; Gin, RMTJ; van Houwelingen, KG; Hautvast, RWM; Linssen, GCM; Sen, H; Lowik, MM; IJzerman, MJ; Doggen, CJM; von Birgelen, C

**Title:**

Bifurcation treatment with novel, highly flexible drug-eluting coronary stents in all-comers: 2-year outcome in patients of the DUTCH PEERS trial

**Date:**

2016-03-01

**Citation:**

van der Heijden, L. C., Kok, M. M., Lam, M. K., Danse, P. W., Schramm, A. R., Jessurun, G. A. J., Gin, R. M. T. J., van Houwelingen, K. G., Hautvast, R. W. M., Linssen, G. C. M., Sen, H., Lowik, M. M., IJzerman, M. J., Doggen, C. J. M. & von Birgelen, C. (2016). Bifurcation treatment with novel, highly flexible drug-eluting coronary stents in all-comers: 2-year outcome in patients of the DUTCH PEERS trial. *CLINICAL RESEARCH IN CARDIOLOGY*, 105 (3), pp.206-215. <https://doi.org/10.1007/s00392-015-0907-3>.

**Persistent Link:**

<http://hdl.handle.net/11343/254977>

**File Description:**

Published version

**License:**

CC BY