



OPEN ACCESS

ORIGINAL ARTICLE

Comparison of prognostic models to predict the occurrence of colorectal cancer in asymptomatic individuals: a systematic literature review and external validation in the EPIC and UK Biobank prospective cohort studies

Todd Smith,¹ David C Muller,¹ Karel G M Moons,² Amanda J Cross,¹ Mattias Johansson,³ Pietro Ferrari,⁴ Guy Fagherazzi,⁵ Petra H M Peeters,⁶ Gianluca Severi,⁵ Anika Hüsing,⁷ Rudolf Kaaks,⁷ Anne Tjonneland,⁸ Anja Olsen,⁸ Kim Overvad,⁹ Catalina Bonet,¹⁰ Miguel Rodriguez-Barranco,¹¹ Jose Maria Huerta,¹² Aurelio Barricarte Gurrea,¹³ Kathryn E Bradbury,¹⁴ Antonia Trichopoulou,¹⁵ Christina Bamia,¹⁵ Philippos Orfanos,¹⁶ Domenico Palli,¹⁷ Valeria Pala,¹⁸ Paolo Vineis,¹⁹ Bas Bueno-de-Mesquita,²⁰ Bodil Ohlsson,²¹ Sophia Harlid,²² Bethany Van Guelpen,²² Guri Skeie,²³ Elisabete Weiderpass,²⁴ Mazda Jenab,²⁵ Neil Murphy,²⁵ Elio Riboli,¹ Marc J Gunter,²⁵ Krasimira Jekova Aleksandrova,²⁶ Ioanna Tzoulaki¹

► Additional material is published online only. To view please visit the journal online (<http://dx.doi.org/10.1136/gutjnl-2017-315730>).

For numbered affiliations see end of article.

Correspondence to

Dr Ioanna Tzoulaki, Department of Biostatistics and Epidemiology, School of Public Health, Imperial College London, London W2 1PG, UK; i.tzoulaki@imperial.ac.uk

Received 21 November 2017
Revised 9 February 2018
Accepted 3 March 2018
Published Online First
3 April 2018



To cite: Smith T, Muller DC, Moons KGM, *et al.* *Gut* 2019;**68**:672–683.

ABSTRACT

Objective To systematically identify and validate published colorectal cancer risk prediction models that do not require invasive testing in two large population-based prospective cohorts.

Design Models were identified through an update of a published systematic review and validated in the European Prospective Investigation into Cancer and Nutrition (EPIC) and the UK Biobank. The performance of the models to predict the occurrence of colorectal cancer within 5 or 10 years after study enrolment was assessed by discrimination (C-statistic) and calibration (plots of observed vs predicted probability).

Results The systematic review and its update identified 16 models from 8 publications (8 colorectal, 5 colon and 3 rectal). The number of participants included in each model validation ranged from 41 587 to 396 515, and the number of cases ranged from 115 to 1781. Eligible and ineligible participants across the models were largely comparable.

Calibration of the models, where assessable, was very good and further improved by recalibration. The C-statistics of the models were largely similar between validation cohorts with the highest values achieved being 0.70 (95% CI 0.68 to 0.72) in the UK Biobank and 0.71 (95% CI 0.67 to 0.74) in EPIC.

Conclusion Several of these non-invasive models exhibited good calibration and discrimination within both external validation populations and are therefore potentially suitable candidates for the facilitation of risk stratification in population-based colorectal screening programmes. Future work should both evaluate this potential, through modelling and impact studies, and ascertain if further enhancement in their performance can be obtained.

Significance of this study

What is already known on this subject?

- Whereas risk prediction models are commonly used in clinical practice, none are widely used for colorectal cancer. Accurately identifying people at increased risk of developing colorectal cancer would provide substantial public health benefits.
- There are a range of existing models, based on non-invasive variables, to predict the future occurrence of colorectal cancer. To our knowledge, they have not yet all been externally validated and evaluated in comparable populations.
- External validation is essential for the selection and optimisation of the best models, aiding their potential for future implementation in clinical practice.

What are the new findings?

- This comprehensive external validation and comparison of non-invasive colorectal cancer risk prediction models in two large population-based cohorts provides a basis for their future selection and development for clinical practice.
- The models were well calibrated in EPIC and the UK Biobank, with further improvements achieved after recalibration. The discrimination of the models was similar between the two cohorts, with C-statistics of up to 0.71.

INTRODUCTION

Colorectal cancer accounts for 10% of all cancers in men and 9% in women worldwide, representing the third and second most common cancer types,

Significance of this study

How might it impact on clinical practice in the foreseeable future?

- The good calibration and discrimination observed in the better performing models provides evidence that further work (including modelling and impact studies) should be undertaken to assess their potential clinical utility.

respectively, with an estimated combined annual incidence of over 1.3 million cases and 694 000 deaths.¹ Population-based screening strategies, which many countries have implemented or are in the process of implementing,² have the potential to reduce this substantial burden.³

Risk prediction models that estimate the probability of developing colorectal cancer in an asymptomatic, community-dwelling, population could substantially improve the efficiency and implementation of these population-based screening strategies by facilitating risk-stratified approaches. Additionally, as has been demonstrated in cardiovascular disease,⁴ these models can also be used to target prevention strategies and/or as a tool to aid risk communication.

Several models exist for predicting the risk of developing colorectal, colon or rectal cancer in asymptomatic populations.⁵ However, little is known about the comparative ability of these models to identify future cases when validated head to head in the same population. This information is essential to guide which models should be considered for further optimisation or for assessment of their clinical utility and implementation.

Risk prediction models that incorporate information that is routinely available or easily ascertained without 'invasive' tests are particularly attractive as they are easier to implement in a general population or primary care screening setting. Therefore, we performed, to our knowledge, the first systematic comparison and external validation of published 'non-invasive' colorectal cancer risk prediction models in two large independent prospective cohort studies, which collectively represent just under 1 million individuals.

METHODS

Systematic literature search and identification of published models

We extended a previously published systematic review of colorectal cancer models from March 2014 to July 2016, using the same search algorithm.⁵ Studies extracted from the previous systematic review and newly identified studies from our updated literature search were included if: the study presented at least one formal prediction model; it was developed to provide individualised predictions; the endpoint was incident colorectal cancer or a subsite within it; the population was a general population or community-dwelling setting, not a specific symptomatic, clinical or high-risk patient population group; predictors in the model were measurements that could be taken non-invasively (through questionnaire, physical measurements and so on); and predictors only had to be measured at a single point in time rather than repeated longitudinal measurements. In addition, any updates or validations of identified models that continued to meet the selection criteria were retained. Only full articles (ie, not conference abstracts) and articles published in English were considered eligible.

Of those studies identified in the initial systematic review,⁵ TS reviewed their summaries and referred to individual abstracts

and full texts where required. Those with the potential to be included were reviewed by a second author (DCM/IT). In the extension to the systematic review, the search results were collated in the reference management software Endnote X7. After the removal of duplicates, the resultant publications' titles and abstracts were screened by TS, and those deemed to have the potential to contain eligible models were retained. These were then independently reviewed by two authors (TS and DCM/IT) to identify those papers containing eligible models, using the full text where available and required. Any discrepancies between reviewers were resolved by consensus. In addition, the reference list of any eligible study identified through the aforementioned processes was reviewed to check for unidentified models. As the intention of this systematic review was to identify models for subsequent external validation, a risk of bias assessment was not undertaken.

Data extraction

From each eligible risk prediction model we extracted the necessary information to perform an external validation, following the applicable guidance from the checklist for critical appraisal and data extraction for systematic reviews of prediction modelling studies (CHARMS)⁶: first author's name, year of publication, country, number of cases and population size, outcomes examined, age range of participants, duration of follow-up, statistical model, number of predictors, definition of each predictor (including thresholds for categorical predictors), reported performance of the model, reported performance in internal or external validation (if done) and the parameter estimates, including predictors relative risks or coefficients. If a subsequently published validation of a model incorporated either an updated predictor definition or coefficient value then these were substituted for the original. Where models estimated absolute risks, then additional data to assess the calibration of the model was also recorded including age-specific cancer hazard rates,^{7,8} age-specific mortality rates,^{7,8} attributable risks,⁷ survivor functions,^{9,10} mean values for each risk factor in the cohort⁹ and the risk score estimated at the means of all predictors.¹⁰

Validation cohorts

We used two large, multicentre, population-based cohorts to validate the eligible colorectal cancer risk prediction models. The European Prospective Investigation into Cancer and Nutrition (EPIC) is a multicentre prospective cohort study comprising 521 324 participants aged 17 to 98 years at baseline (though predominantly 35–70 years) who were recruited between 1992 and 2000 across 23 centres in 10 European countries.¹¹ Participants were enrolled from a variety of sources and included blood donors, screening participants, health conscious individuals and the general population (more detailed information regarding the characteristics and eligibility criteria of the individual centres has been published elsewhere).¹¹ Baseline data on each participant's diet and lifestyle were generally collected through self-completed questionnaires with anthropometric measurements being recorded subsequently at a recruitment centre; however, there was variability between centres.¹¹ After the exclusion of individuals with prevalent cancer at recruitment (except for non-melanoma skin cancers), there were 491 992 available participants in EPIC with censoring due to the end of follow-up ranging from 28 June 2008 (France) to 31 December 2013 (Sweden). Colorectal cancer diagnoses were identified by a number of methods including cancer registries, health insurance records, pathology registries and active follow-up.¹²

The UK Biobank is a multicentre prospective cohort of over 500 000 participants aged 40–69 years at baseline who were identified through National Health Services registers and recruited between 2006 and 2010, across 22 assessment centres in Great Britain.^{13 14} Baseline data recorded at the assessment centres included information about diet and lifestyle along with anthropometric measures, obtained through a combination of a self-completed questionnaire, computer-assisted interview and physical measurement.¹⁴ From an initial total of 502 639 participants, 475 629 were available for external validation after the exclusion of participants with cancers prevalent at recruitment (except non-melanoma skin cancers). We set the end of follow-up for cancer incidence as the 1st January 2015. Colorectal cancer diagnoses within the cohort's participants was ascertained from national cancer registries.¹⁵

Statistical analysis

Model predictors, outcomes and time horizon

We first attempted to match the predictors of the original models with the variables available in EPIC and the UK Biobank cohorts. When a direct match could not be achieved but a suitable surrogate(s) existed, we defined it as closely as possible to the model's original predictor definition. Online supplementary table 1 provides a description of the variables used in each of the prediction models and details of the redefinition when it was required. In cases where variables or suitable surrogates were unavailable for a substantial majority or the entirety of the cohort, we assumed a single value chosen to be typical of the population and applied it to all participants. For instance, in the EPIC cohort, all individuals were set to be non-users of non-steroidal anti-inflammatory drugs when a model incorporated this variable.

In the presence of other missing predictor data, where it was less restrictive on the resultant size of the validation population, we conducted complete case analysis. As several of the models evaluated were time-to-event models, imputation was not undertaken as it tends to produce biased estimates.¹⁶ The number of participants contributing to the evaluation of each model thus differed depending on the extent of missing data in its constituent predictors.

Participants aged between 40 and 70 years at recruitment were included in the validation of all models, unless the model was developed in an older population, in which case we matched the minimum age of the original population.

The eligible and ineligible populations for each model were contrasted, by the cumulative incidence of the cancer(s) the model predicted, the age of the participants and the presence of five modifiable risk factors: body mass index (BMI),¹⁷ smoking,¹⁸ alcohol intake,^{17 18} physical activity¹⁷ and processed meat consumption.¹⁷

The outcome predicted for all models tested was the incidence of a first primary colorectal cancer or cancer at an anatomical subsite within the colorectum (International Statistical Classification of Diseases and Related Health Problems 10th Revision codes: C18 (except C18.1, Appendix), C19 and C20), within the time frame of the model prior to censoring by another cancer diagnosis, death or end of follow-up.

Based on the current length of follow-up in the two cohorts, the prediction horizon for the models was restricted to a maximum of 10 years in EPIC and 5 years in the UK Biobank.

Model performance

We assessed the discrimination and calibration of all eligible models in the two cohorts separately. The discrimination of each

model was assessed using the concordance (C)-statistic and its 95% CI. This was initially calculated as Somers' D¹⁹ and then transformed into Harrell's C-statistic²⁰ ((Somers' D+1)/2).²¹ The values achieved by each model in EPIC and the UK Biobank were then compared.²² For the Colditz model neither the age and sex specific incidences nor the population prevalences were provided in full in the original paper. To obtain absolute risks we calculated these in the validation cohorts, as a result the estimates of discrimination correspond to a recalibrated model.²³ Calibration of the original models and their subsequent recalibration was assessed graphically by plotting the mean observed probability against the mean predicted probability within tenths of the predicted probabilities. Where authors produced sex-specific models, these were first combined by amalgamating their individual absolute risk values. In order to derive the absolute risk estimate required for the assessment of calibration, we applied the full prediction rule of the original models, as they were published, to our two study cohorts. When this was not available, in models that were constructed to provide an absolute risk, we contacted the authors to obtain this information. If this was unsuccessful, we only provide information on the recalibration of these models. Recalibration was undertaken for the logistic regression-based models by refitting the model intercept in the validation cohorts along with their published predicted log-odds as an offset. While in the survival model-based risk models, we estimated the baseline survival function in the validation cohorts and combined this with the predicted hazard ratios from the published model to obtain recalibrated predicted probabilities.

Resultantly, this meant we were able to provide calibration plots for five of the eight publications in EPIC and three of the eight publications in the UK Biobank. Three calibrations were not possible to assess in either cohort, either because the model was not constructed to provide an absolute risk²⁴ or because the required data could not be obtained.^{23 25} A further two^{9 26} were not possible to assess in the UK Biobank as the baseline survival function provided was for a time horizon of 10 years, while in this cohort, due to the length of follow-up available, they were assessed over 5 years. In these cases, we present recalibrated estimates only.

In the UK Biobank, common protocols and assessment procedures were used for all study participants; therefore, it was treated as a single population in all analyses. However, as EPIC encompasses diverse geographical locations across multiple Europe countries, we calculated model discriminations in each country separately (n varied from 3 to 9) and then used meta-analysis to summarise the results after logit transformation.²⁷ This approach also provided a measure of heterogeneity between countries (I^2).

Stata V.13 software and user-written packages^{19 28–32} were used to construct and validate each model either in full or where code was available for alternative software in part (one publication⁷ had an associated macro³³ for which we used SAS software (V.9.4)).

Patient involvement

Patients were not involved in the study design.

RESULTS

Identification of models for inclusion in the systematic review

Online supplementary figure 1 shows the flow of the study selection process. From the systematic review,⁵ we selected seven publications that contained at least one eligible model and two publications that documented external validation of these models. Our updated literature search yielded 7914 publications, of which

116 publications were selected for full-text review, and one publication was deemed eligible. Collectively, these two search strategies resulted in the identification of eight publications, containing 16 eligible models, originating from a diverse range of derivation populations (online supplementary table 2).

Characteristics of the included models

Of the 16 eligible models (table 1), eight examined the risk of colorectal cancer, five the risk of colon cancer and three the risk of rectal cancer, specifically. Twelve were sex-specific risk models (of which six were paired male and female models, for the same anatomical site, from the same publication) and four incorporated both sexes. Age was included in all models, either as a covariate or through the use of age-specific rates, with other common covariates being BMI (13 models), alcohol consumption (13 models) and smoking (9 models). The number of predictors ranged from 2⁸ to 14.²³ All female-specific models incorporated some indication of oestrogen exposure,^{7 23 26} with the exception of the model published by Shin *et al.*²⁵ In their original publications, the model's performance, or illustrative examples, had been reported over time horizons ranging from 5 to 20 years (table 2). All models were validated over 5 years in the UK Biobank, given the limited follow-up time in the cohort. In EPIC they were validated over 10 years unless they had been developed as 5-year models,^{10 25} in which case this time horizon was used.

Characteristics of the validation populations

The number of individuals included in each validation varied across both the models and the cohorts due to the availability of their predictors (online supplementary table 1). Within EPIC, the percentage of eligible participants included ranged from 17.1% (n=25 273)⁸ to 84.0% (n=124 293)²⁵ for male participants and 20.1% (n=69 154)²⁶ to 60.4% (n=207 887)²⁵ for female participants, while for the UK Biobank, these values were 42.7% (n=93 608)²⁶ to 98.7% (n=216 440)²⁴ and 45.8% (n=117 367)²⁶ to 85.7% (n=219 484),⁸ respectively (online supplementary tables 3–6). As some models included both sexes, this meant that actual model population sizes ranged from 41 587²⁶ to 396 515⁸ and the number of cases per model ranged from 115²⁵ to 1781.¹⁰ There was variability in how closely matched the eligible and ineligible populations were across cancer incidence rate, age and modifiable risk factors; however, overall, they were largely comparable.

External validation

Figure 1 shows the C-statistics of the models in the UK Biobank and EPIC as well as their previously reported derivation and validation values where they were available. On the whole the models showed similar levels of estimated discrimination between EPIC and the UK Biobank with the exception of the female Wells *et al* model,²⁶ which had higher discrimination in EPIC (EPIC C-statistic 0.67 (95% CI 0.65 to 0.70), UK Biobank C-statistic 0.62 (95% CI 0.60 to 0.64)) (table 2). In the UK Biobank, the C-statistic varied between 0.58 (95% CI 0.56 to 0.61) (Freedman *et al*'s female colorectal model⁷) to 0.70 (95% CI 0.68 to 0.72) (Ma *et al*'s colon model⁹). In EPIC, the C-statistic varied between 0.58 (95% CI 0.56 to 0.60⁷) (Freedman *et al*'s female colorectal model⁷) to 0.71 (95% CI 0.67 to 0.74) (Shin *et al*'s male right colon model²⁵).

The highest C-statistic achieved in the validation by a colorectal model was 0.70 (95% CI 0.67 to 0.73) (Wells *et al* male model²⁶ in the EPIC cohort); this was also the highest value achieved by a colon cancer model that encompassed the entire

colon (0.70, 95% CI 0.68 to 0.72, Ma *et al*⁹ in the UK Biobank). For rectal models, the highest C-statistic was 0.68 (95% CI 0.65 to 0.70) (Ma *et al*⁹ for men in the UK Biobank). These models were all male specific.

Of the female-specific models, the Wells *et al* model²⁶ achieved the highest colorectal cancer discrimination with a C-statistic of 0.67 (95% CI 0.65 to 0.70 in EPIC). There was only one female-specific colon cancer and one female-specific rectal cancer model to be validated; the highest values obtained between the two cohorts was 0.65 (95% CI 0.62 to 0.69) (Colditz *et al*²³ in EPIC) and 0.63 (95% CI 0.59 to 0.67) (Shin *et al*²⁵ in the UK Biobank), respectively.

Finally, when assessing models that incorporated both sexes or where the results of sex-specific models were merged, the model(s) with the highest colorectal discrimination were by Wells *et al*²⁶ with a C-statistic of 0.69 (95% CI 0.67 to 0.71) in the EPIC cohort.

The I² obtained for each model, from the meta-analysis of the available constituent countries in the EPIC cohort, ranged from 0.0%^{7 8 25 26} to 77.6%.²⁴ Six of the 16 models, representing four publications,^{9 10 23 24} had I² that exceeded 50%.

For those models for which calibration could be assessed, there was good performance across both the UK Biobank and EPIC (online supplementary figures 2–7). Within the colorectal models, the slight exceptions were Freedman *et al*'s model⁷ in the UK Biobank and Ma *et al*'s model⁹ in EPIC, which show some overestimation at the upper deciles of observed cancer incidence (online supplementary figures 2 and 3). After recalibration of the models to the populations in which they were being validated in, the performance of suboptimally calibrated models was improved. Across all models, close agreement between the predicted and observed risk was observed, with only on occasion the uppermost 10th of predicted risk overestimating the observed risk (figure 2–7). The only exception was Freedman *et al*'s model,⁷ which showed notable over prediction for those in the highest 20% of predicted risk in the UK Biobank (figure 2).

DISCUSSION

We conducted an external validation of 16 colorectal, colon and rectal cancer risk prediction models with easy-to-measure predictors in two large European cohort studies and compared their predictive performances. Overall, the models exhibited good calibration, better for example than what was achieved across an external validation of type 2 diabetes models³⁴ and performed well in discriminating between those individuals who were subsequently diagnosed with colorectal cancer and those that were not, with over 70% of the C-statistic estimates ranging between 0.65 and 0.71. The majority of this discriminative ability, among models that incorporated the whole colorectum, was achievable from using just age and family history as in the Taylor *et al* model⁸ (C-statistic of 0.67). Colorectal models that improved on this and incorporated both sexes (or where sex-specific models could be merged) required substantially more predictors, 7 for a C-statistic of 0.68 in Steffen *et al*¹⁰ (sex, age, BMI, diabetes, colorectal cancer screening, smoking and alcohol consumption) and 13 for C-statistics of 0.67 in the UK Biobank and 0.69 in EPIC in Wells *et al*²⁶ (age, ethnicity, education, BMI, family history, diabetes, oestrogen exposure, non-steroidal anti-inflammatory use, physical activity, smoking, alcohol, red meat intake and multivitamin use).

Clinical application

Risk prediction models with good calibration could improve the efficiency and implementation of screening programmes by

Table 1 Predictor variables contained within the 16 identified eligible colorectal cancer risk prediction models

Author	Sex	Outcome	Sex	Age	Eth	Edu	Height	BMI	Anthropometry		Family history of Cancer		Medical history			Medication use				Lifestyle factors			Diet					
									Sex	Age	Eth	Edu	Height	BMI	Cancer	Diabetes	Screen/endo/ polyp	IBD	Menopausal status	HRT	OC	NSAID	Physical activity	Smoking	Alcohol	Red meat/ meat	Veg	Vit
Colditz ²³	M	C	●	●	●	●	●	●	●	●	●	●	●	●	●	●	●	●	●	●	●	●	●	●				
	F	C	●	●	●	●	●	●	●	●	●	●	●	●	●	●	●	●	●	●	●	●	●	●				
Driver ²⁴	M	CRC	●	●	●	●	●	●	●	●	●	●	●	●	●	●	●	●	●	●	●	●	●	●				
Freedman ⁷	M	CRC	●	●	●	●	●	●	●	●	●	●	●	●	●	●	●	●	●	●	●	●	●	●				
	F	CRC	●	●	●	●	●	●	●	●	●	●	●	●	○	○	○	○	○	○	○	○	○	○				
Ma ⁹	M	CRC	●	●	●	●	●	●	●	●	●	●	●	●	●	●	●	●	●	●	●	●	●	●				
M	C	●	●	●	●	●	●	●	●	●	●	●	●	●	●	●	●	●	●	●	●	●	●	●				
M	R	●	●	●	●	●	●	●	●	●	●	●	●	●	●	●	●	●	●	●	●	●	●	●				
Shin ²⁵	M	R C	●	●	●	●	●	●	●	●	●	●	●	●	●	●	●	●	●	●	●	●	●	●				
F	R	●	●	●	●	●	●	●	●	●	●	●	●	●	●	●	●	●	●	●	●	●	●	●				
Steffen ¹⁰	Both	CRC	●	●	●	●	●	●	●	●	●	●	●	●	●	●	●	●	●	●	●	●	●	●				
	Both	C	●	●	●	●	●	●	●	●	●	●	●	●	●	●	●	●	●	●	●	●	●	●				
Both	R	●	●	●	●	●	●	●	●	●	●	●	●	●	●	●	●	●	●	●	●	●	●	●				
Taylor ⁸	Both	CRC	●	●	●	●	●	●	●	●	●	●	●	●	●	●	●	●	●	●	●	●	●	●				
Wells ²⁶	M	CRC	●	●	●	●	●	●	●	●	●	●	●	●	●	●	●	●	●	●	●	●	●	●				
	F	CRC	●	●	●	●	●	●	●	●	●	●	●	●	○	○	○	○	○	○	○	○	○	○				
Variable availability in EPIC	■	■	■	■	■	■	■	■	■	■	■	■	■	■	■	■	■	■	■	■	■	■	■	■				
Variable availability in UK Biobank	■	■	■	■	■	■	■	■	■	■	■	■	■	■	■	■	■	■	■	■	■	■	■	■				

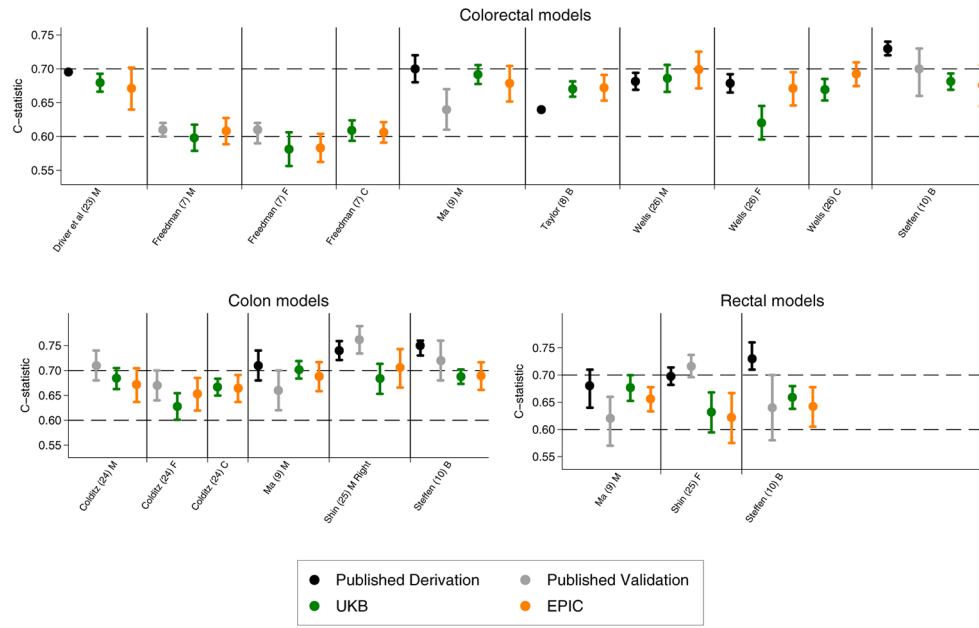
● variable included in the original model; ○, two variables amalgamated to create a new variable that was included in the model. The names of these variables were: α, oestrogen status; μ, oestrogen; Family history of cancer varied by both cancer site and degrees of relatedness between models. ■, available in a construction directly suitable for at least one model; □, variable required to be derived from other variable(s) in the dataset for all models that used it; na, not applicable as the variable is amalgamated in the model in which it is used. See online supplementary table 1 for further details.

BMI, body mass index; C, colon cancer; CRC, colorectal cancer; Edu, years of education; EPIC, European Prospective Investigation into Cancer and Nutrition; Eth, ethnicity; F, female; HRT, hormone replacement therapy; IBD, inflammatory bowel disease; M, male; NSAID, non-steroidal anti-inflammatory drug; OC, oral contraceptive; R, rectal cancer; RC, right colon cancer; screen/endo/polyp, history of colorectal cancer screening or lower gastrointestinal endoscopy with or without identification of polyps; Veg, vegetables; Vit, multivitamin.

Table 2 Colorectal cancer risk model discrimination in the published literature, EPIC and the UK Biobank

Author	Sex	Site	Time horizon (years)	Derivation C-statistic (95% CI)	Published validation C-statistic* (95% CI)	UK Biobank		EPIC		I ² -statistic across EPIC countries (%)
						UK Biobank C-statistic (95% CI)	Sex-combined C-statistic (95% CI)	EPIC C-statistic (95% CI)	Sex-combined C-statistic (95% CI)	
Colditz ²³	Male	Colon	10	0.71 (0.68 to 0.74) ⁴²	0.68 (0.66 to 0.70)	0.67 (0.65 to 0.68)	0.67 (0.64 to 0.70)	0.66 (0.64 to 0.69)	62.8	
	Female	Colon		0.67 (0.64 to 0.70) ⁴²	0.63 (0.60 to 0.65)	0.65 (0.62 to 0.69)	62.3			
Driver ²⁴	Male	Colorectal	20	0.695	0.68 (0.67 to 0.69)	0.67 (0.64 to 0.70)	77.6			
Freedman ⁷	Male	Colorectal	10 and 20		0.60 (0.58 to 0.62) ⁴³	0.61 (0.59 to 0.62)	0.61 (0.59 to 0.62)	0.61 (0.59 to 0.62)	0.0	
	Female	Colorectal			0.61 (0.59 to 0.62) ⁴³	0.58 (0.56 to 0.61)	0.58 (0.56 to 0.60)	0.0		
Ma ⁹	Male	Colorectal	10	0.70 (0.68 to 0.72)	0.64 (0.61 to 0.67)	0.69 (0.68 to 0.71)	0.68 (0.65 to 0.70)	65.9		
	Male	Colon		0.71 (0.68 to 0.74)	0.66 (0.62 to 0.70)	0.70 (0.68 to 0.72)	0.69 (0.66 to 0.72)	51.9		
Shin ²⁵	Male	Rectal		0.68 (0.64 to 0.71)	0.62 (0.57 to 0.66)	0.68 (0.65 to 0.70)	0.66 (0.63 to 0.68)	1.3		
	Male	Right Colon	5	0.74 (0.72 to 0.76)	0.76 (0.73 to 0.79)	0.68 (0.65 to 0.71)	0.71 (0.67 to 0.74)	0.0		
Steffen ¹⁰	Female	Rectal		0.70 (0.68 to 0.71)	0.72 (0.70 to 0.74)	0.63 (0.59 to 0.67)	0.62 (0.58 to 0.67)	37.7		
	Both	Colorectal	5	0.73 (0.72 to 0.74)	0.70 (0.66 to 0.73)	0.68 (0.67 to 0.69)	0.68 (0.65 to 0.71)	68.1		
Taylor ⁸	Both	Colon		0.75 (0.73 to 0.76)	0.72 (0.68 to 0.76)	0.69 (0.67 to 0.70)	0.69 (0.66 to 0.72)	45.4		
	Both	Rectal		0.73 (0.71 to 0.76)	0.64 (0.58 to 0.70)	0.66 (0.64 to 0.68)	0.64 (0.61 to 0.68)	33.0		
Wells ²⁶	Both	Colorectal	20	0.64	0.67 (0.66 to 0.68)	0.67 (0.66 to 0.68)	0.67 (0.65 to 0.69)	0.0		
	Male	Colorectal	10	0.681 (0.669 to 0.694)	0.69 (0.67 to 0.71)	0.67 (0.65 to 0.68)	0.70 (0.67 to 0.73)	0.69 (0.67 to 0.71)	20.9	
	Female	Colorectal		0.679 (0.665 to 0.692)	0.62 (0.60 to 0.64)	0.67 (0.65 to 0.70)	0.0			

*Validation C-statistics were obtained from the original derivation publications or, where indicated, from validation studies identified in the systematic review. EPIC, European Prospective Investigation into Cancer and Nutrition.



Models are ordered by chronology of publication date. The European Prospective Investigation into Cancer and Nutrition (EPIC) values were obtained by IPD meta-analysis at country level after logit transformation of the C-statistic. M = male specific model, F = female specific model, B = both male and female incorporated in the model, C = combined results of male and female sex specific models, Right = right colon only. Time Horizons for validation were 5 years in the UK Biobank (UKB) and 10 years in EPIC with the exception of Steffen *et al* (10) and Shin *et al* (25) which were validated over 5 years in both cohorts. Discrimination for the prior validations of Colditz *et al* (24) and Freedman *et al* (7) were obtained from additional publications (34, 35).

Figure 1 Discrimination of colorectal cancer risk prediction models by anatomical location.

targeting screening and screening intensity to those at greatest risk. Our findings provide support for the further evaluation of several of the models we identified, in this context, and would suggest in the first instance that this should incorporate both modelling and impact studies. Given the close performance between the Steffen *et al*¹⁰ and Wells *et al*²⁶ models, there is little to choose between the two and both should be considered given the availability of their predictors. Furthermore, the similar performance of the Taylor *et al*⁸ model, along with its requirement for only two predictors (age and family history of colorectal cancer), provides a strong case for its inclusion despite

its continued overestimation of risk in the uppermost decile of predicted risk after recalibration. Additionally, given the use of flexible sigmoidoscopy in screening settings,³⁵ there is a potential for the use of a right colon model like Shin *et al*'s²⁵ to identify those individuals who may be better served by a colonoscopy rather than a sigmoidoscopy.

An additional challenge faced by colorectal screening programmes is the population uptake of the screening test. In England in 2015/2016, the percentage uptake for bowel cancer screening within 6 months of invitation for those aged 60–74 years was only 56.4%.³⁶ This low participation rate is a substantial public health

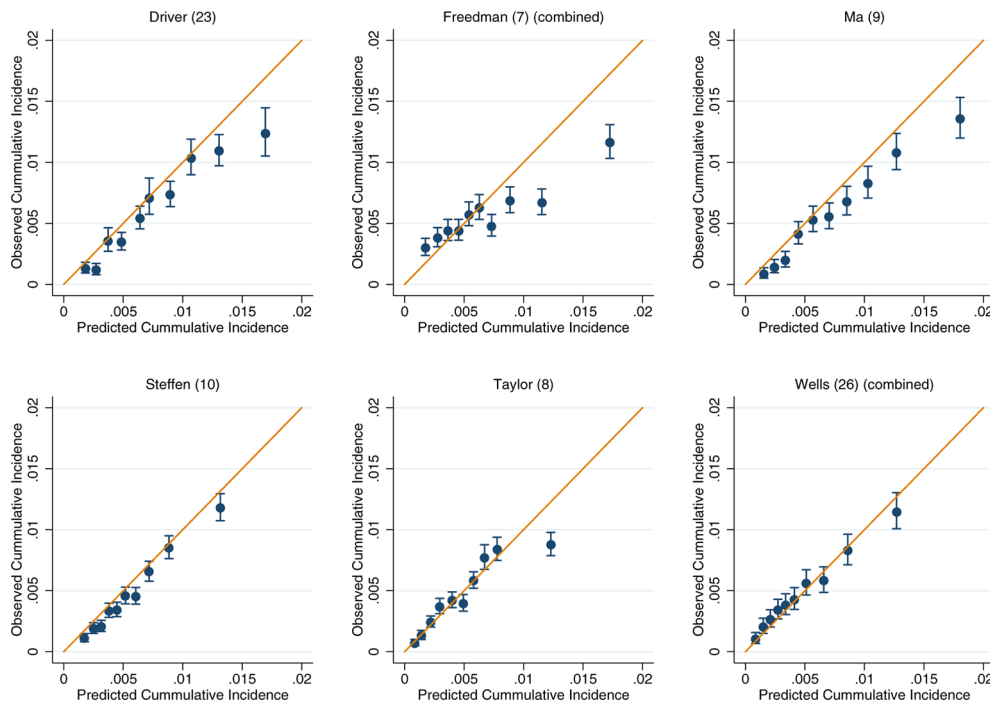


Figure 2 Recalibration plots of colorectal cancer risk models within the UK Biobank. Time horizon was 5 years for all models.

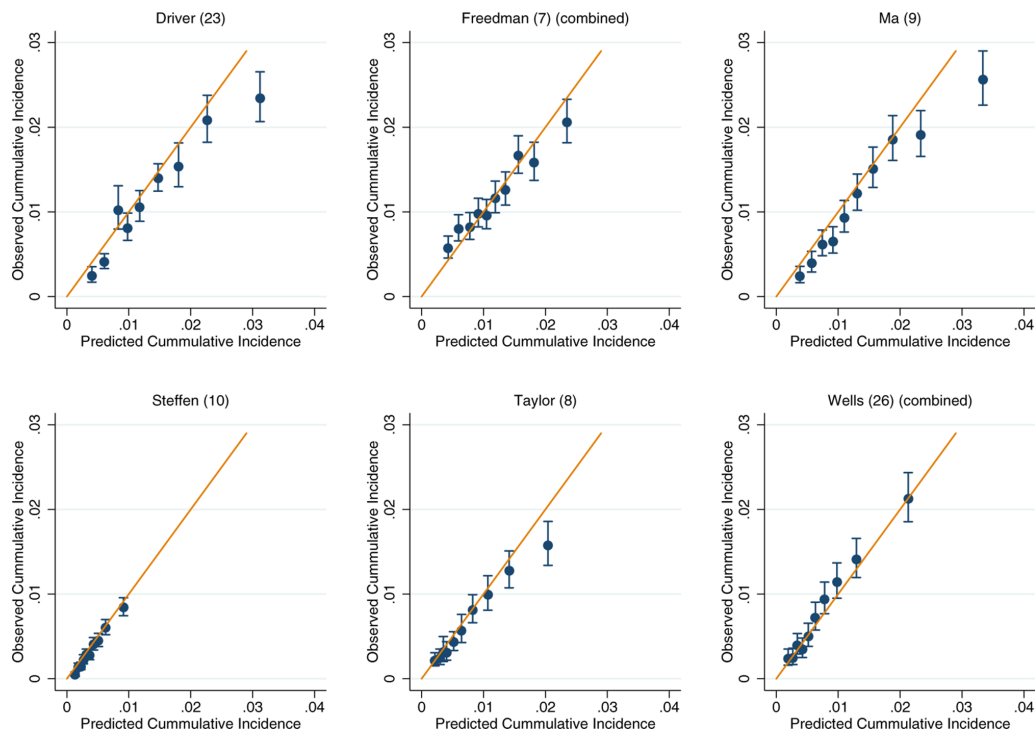


Figure 3 Recalibration plots of colorectal cancer risk models within the European Prospective Investigation into Cancer and Nutrition. Time horizon was 10 years for all models except Steffen *et al* which was 5 years.¹⁰

challenge and needs to be addressed to maximise the benefits that can be achieved by population-based screening. Well-calibrated risk prediction models could play a role in this, particularly among the higher risk population, by facilitating an awareness of personalised risk estimates. The potential of this approach has been highlighted by an English-based study examining the association between an individual's perceived risk of colorectal cancer with their interest in screening, finding that those who believed they had a higher than average chance of developing colorectal cancer had a greater

interest in screening (98%) than those who believed they had an average (84%) or lower than average (74%) chance.³⁷ Although it was not assessed if this translated into actual screening attendance, a recent meta-analysis has reported a z-score of 0.13 (95% CI 0.10 to 0.16) for the association between colorectal cancer risk perception and reported screening behaviour,³⁸ and given the substantial numbers currently not participating in colorectal screening, a small improvement may yet provide a substantial benefit to the population. Finally, if chemopreventative agents are adopted for use in the

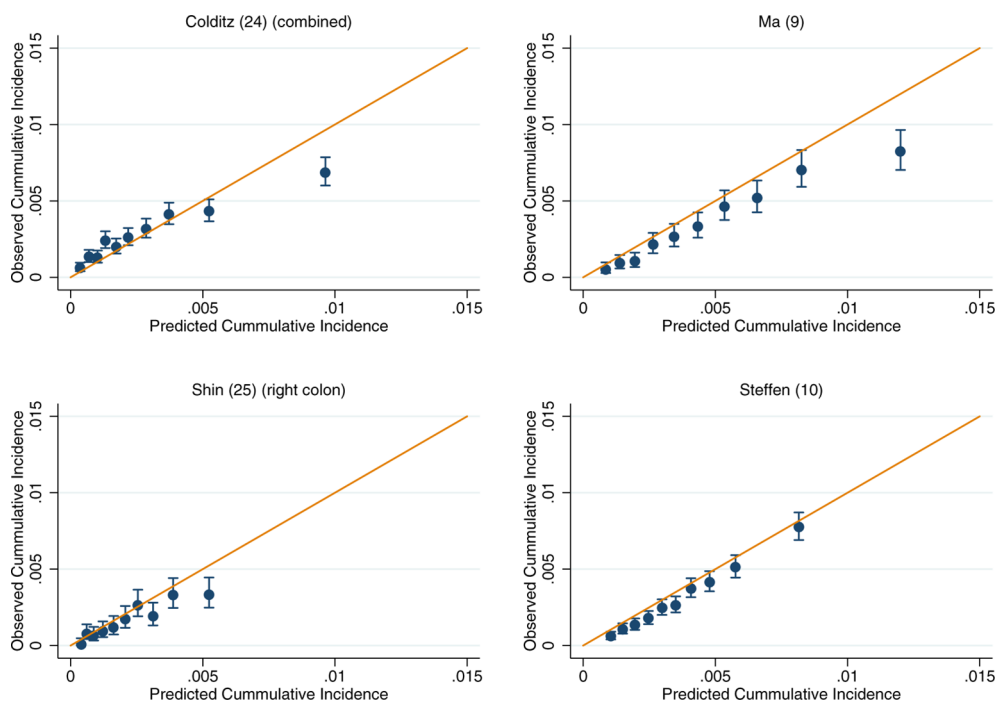


Figure 4 Recalibration plots of colon cancer risk models within the UK Biobank. Time horizon was 5 years for all models.

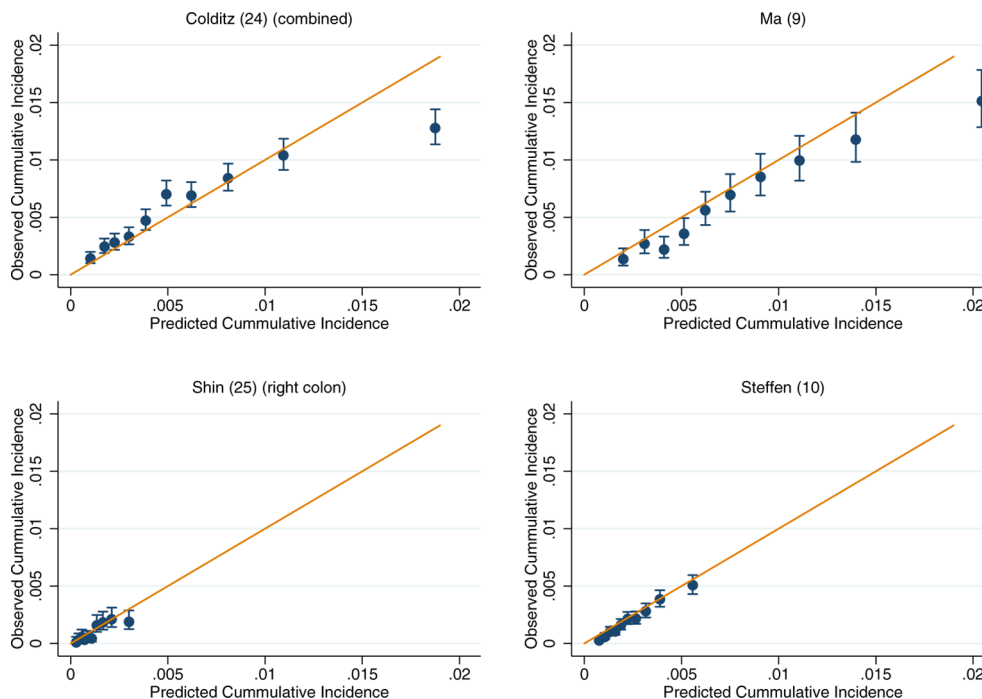


Figure 5 Recalibration plots of colon cancer risk models within the European Prospective Investigation into Cancer and Nutrition. Time horizon was 10 years for all models except Shin *et al* and Steffen *et al* which was 5 years.^{10 25}

general population, colorectal cancer prediction models could play a part in facilitating the identification of those for whom the benefits of treatment are more likely to outweigh possible harms.

Strengths and limitations of the study

This is, to our knowledge, the first study to collate and externally validate non-invasive colorectal cancer risk prediction models in two large prospective cohorts. The systematic nature of the model identification, the large prospective sample sizes in which the models were validated and the opportunity to contrast the performance between cohorts are all substantial strengths. Although the time horizon for most models varied between the cohorts, this does not appear to be a limiting factor, as highlighted by their concordance in performance, but it cannot be excluded. The main limitation was the incomplete nature of several of the variables in the cohorts that necessitated in some cases in having to drop individuals from the analysis while in others, where this represented a substantial proportion of the cohort (as was seen in EPIC), a need to generalise a representative value across the entire cohort. Because of this, the models were not validated in identical samples. This raises several

methodological challenges. In the first instance, the omission of individuals without a complete set of variables has the potential to limit the comparability of the models, particularly in EPIC where data availability can vary geographically. However, on contrasting the characteristics between eligible and ineligible participants across models (online supplementary table 3), the main characteristics were observed to vary little between the subgroups, and the validation samples for each model were largely comparable. The second challenge, where a single value was applied for all participants in EPIC for a given variable, may lead to a reduction in discrimination. In most instances, the effect of this strategy in the present study will be small. For example, Colditz *et al*²³ defined aspirin use as a binary variable with a threshold at daily use for 15 years or more. As a result, the number of participants who would have met this criterion (if known) is likely to be small and so at the population level this is unlikely to have provided much additional discrimination. Furthermore, both Colditz *et al*²³ and Steffen *et al*¹⁰ incorporated a history of colorectal cancer screening into their models. However, as EPIC completed its recruitment in 2000, prior to the advent of colorectal cancer screening in most of its constituent

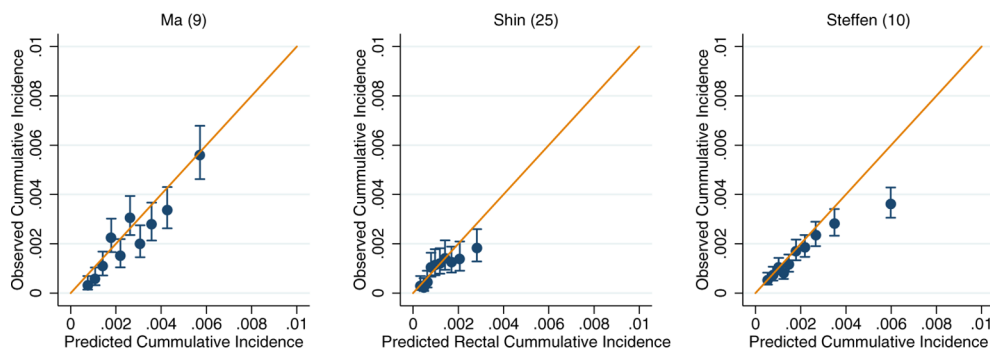


Figure 6 Recalibration plots of rectal cancer risk models within the UK Biobank. Time horizon was 5 years for all models.^{10 25}

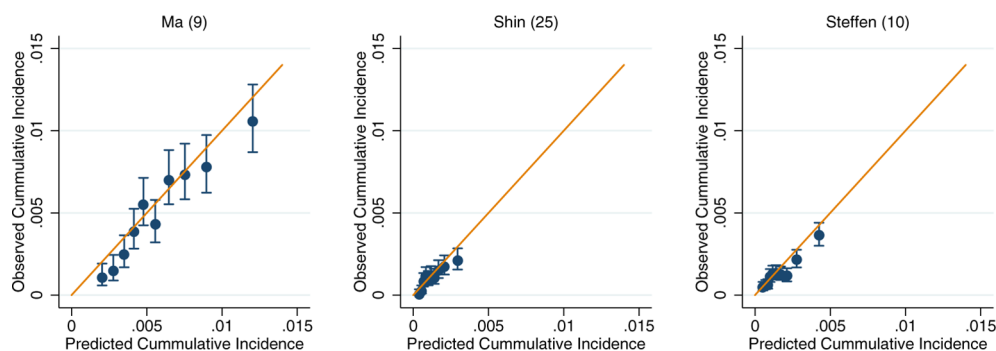


Figure 7 Recalibration plots of rectal cancer risk models within the European Prospective Investigation into Cancer and Nutrition. Time horizon was 10 years for Ma *et al* and 5 years for Shin *et al* and Steffen *et al*.^{9 10 25}

countries,² setting all participants to being unscreened is likely to be an accurate representation. Even where the variable definition or cohort time frame does not provide support for the application of a single value for all participants, for example, family history of colorectal cancer, the similarity of the discriminative value to that achieved in the UK Biobank (figure 1) is suggestive that the assumptions are not likely to have strongly affected our estimates of discrimination.

The issue of missing data in the application of risk prediction models is not straightforward to resolve.³⁹ While it is reasonable to apply multiple imputation techniques when developing a model, it is not clear what one should do when attempting to apply a model to an individual patient who is missing data on one or more predictors and for which multiple imputation may be impractical or impossible. One promising approach is based on fitting, in the model development phase, Pattern Mixture Kernel Submodels for each pattern of missing data.⁴⁰ Further research on this and other methods for dealing with missing predictors at the implementation stage is urgently required if risk prediction models are to be used optimally as part of routine care and medical decision making.

CONCLUSION

Our systematic approach has externally validated a range of non-invasive colorectal cancer risk prediction models across two large prospective cohorts and provided a valuable insight into their performance. We identified several models, including Steffen *et al*,¹⁰ Wells *et al*²⁶ and Shin *et al*,²⁵ with good discrimination and quantification of the actual risk of colorectal cancer, providing promise for their clinical utility in a prevention setting. This demonstrates that we are now at point where we should, through impact studies, assess the clinical utility of these better performing models as well as examine the value of incorporating additional predictors into them, as has already been called for in other areas of risk prediction.⁴¹ For example, incorporating risk prediction models into screening programmes could be useful for more refined, risk-based guidelines for eligibility or frequency of screening. Furthermore, risk models such as Shin *et al*,²⁵ which separate risk by subsite, could be used to target colonoscopy rather than sigmoidoscopy in screening programmes that use this modality. Overall, our results show that several published risk models are good candidates for further evaluation in impact studies and have potential utility in the clinical and screening settings.

Author affiliations

¹Department of Epidemiology and Biostatistics, School of Public Health, Imperial College London, London, UK

²Julius Center for Health Sciences and Primary Care, Umc Utrecht, Utrecht University, Utrecht, The Netherlands

³International Agency for Research on Cancer (IARC), Genetic Epidemiology Group, Lyon, France

⁴Nutritional Methodology and Biostatistics Group (NMB), International Agency for Research on Cancer, Lyon, France

⁵Inserm U1018, Gustave Roussy, Université Paris-Sud, Villejuif, France

⁶Department of Epidemiology, Julius Center for Health Sciences and Primary Care, University Medical Center Utrecht, Utrecht University, Utrecht, The Netherlands

⁷Division of Cancer Epidemiology, German Cancer Research Center (DKFZ), Heidelberg, Germany

⁸Danish Cancer Society Research Center, Copenhagen, Denmark

⁹Department of Public Health, Section for Epidemiology, Aarhus University, Aarhus, Denmark

¹⁰Catalan Institute of Oncology-IDIBELL, L'Hospitalet de Llobregat, Unit of Nutrition and Cancer, Cancer Epidemiology Research Program, Barcelona, Spain

¹¹CIBER de Epidemiología y Salud Pública (CIBERESP), Escuela Andaluza de Salud Pública, Madrid, Spain

¹²Murcia Regional Health Council, IMIB-Arrixaca, CIBER de Epidemiología y Salud Pública (CIBERESP), Madrid, Spain

¹³Navarra Public Health Institute, CIBER de Epidemiología y Salud Pública (CIBERESP), Madrid, Spain

¹⁴Cancer Epidemiology Unit, Nuffield Department of Population Health, University of Oxford, Oxford, UK

¹⁵Hellenic Health Foundation, Athens, Greece

¹⁶Unit of Nutritional Epidemiology and Nutrition in Public Health, Department of Hygiene, Epidemiology and Medical Statistics, School of Medicine, WHO Collaborating Center for Nutrition and Health, National and Kapodistrian University of Athens, Athens, Greece

¹⁷Cancer Risk Factors and Life-Style Epidemiology Unit, Cancer Research and Prevention Institute – ISPO, Florence, Italy

¹⁸Epidemiology and Prevention Unit, Fondazione IRCCS Istituto Nazionale dei Tumori, Milan, Italy

¹⁹Italian Institute for Genomic Medicine, Turin, Italy

²⁰Department for Determinants of Chronic Diseases (DCD), National Institute for Public Health and the Environment (RIVM), Bilthoven, The Netherlands

²¹Department of Internal Medicine, Lund University, Skane University Hospital, Malmö, Sweden

²²Department of Radiation Sciences, Oncology, Umeå University, Umeå, Sweden

²³Department of Community Medicine, Faculty of Health Sciences, University of Tromsø, The Arctic University of Norway, Tromsø, Norway

²⁴Department of Research, Cancer Registry of Norway, Institute of Population-Based Cancer Research, Oslo, Norway

²⁵Nutritional Epidemiology Group, International Agency for Research on Cancer, Lyon, France

²⁶Nutrition, Immunity and Metabolism Start-up Lab, Department of Epidemiology, German Institute of Human Nutrition, Potsdam-Rehbrücke, Germany

Acknowledgements We would like to thank the EPIC and UK Biobank participants for their contribution and the staff at the Department of Biobank Research and Scientists managing the northern Sweden Diet Database, Umeå University.

Contributors TS, DCM, MJG and IT conceived the study. TS, DCM and IT undertook the systematic review. TS, supervised by IT and DCM, undertook the analysis and drafted the initial manuscript. KGMM provided guidance on data interpretation and critical review on the manuscript. AJC, MJ, PF, GF, PHMP, GS, AH, RK, AT, AO, KO, CB, MR-B, JMH, ABG, KEB, AT, CB, PO, DP, VP, PV, BB-d-M, BO, SH, BVG, GS, EW, MJ, NM, ER, MJG and KJA played roles in data acquisition for the EPIC cohort and provided critical review on the manuscript. IT is the guarantor.

Funding TS is supported by a Medical Research Council studentship (MR/M501712/1). DCM is supported by a Cancer Research UK Population Research Fellowship (C57955/A24390). This work was partly supported by the German Research Foundation (DFG) Grant AL 1784/3-1, which has funded the research position of KA for the time of study conduct and analysis. KEB received research grants from Cancer Research UK (C570/A16491) and the Medical Research Council (MR/M012190/1). The coordination of EPIC is financially supported by the European Commission (DG-SANCO) and the International Agency for Research on Cancer. The national cohorts are supported by Danish Cancer Society (Denmark); Ligue Contre le Cancer, Institut Gustave Roussy, Mutuelle Générale de l'Éducation Nationale and Institut National de la Santé et de la Recherche Médicale (INSERM) (France); German Cancer Aid, German Cancer Research Center (DKFZ), Federal Ministry of Education and Research (BMBF), Deutsche Krebshilfe, Deutsches Krebsforschungszentrum and Federal Ministry of Education and Research (Germany); the Hellenic Health Foundation (Greece); Associazione Italiana per la Ricerca sul Cancro-AIRC-Italy and National Research Council (Italy); Dutch Ministry of Public Health, Welfare and Sports (VWS), Netherlands Cancer Registry (NKR), LK Research Funds, Dutch Prevention Funds, Dutch ZON (Zorg Onderzoek Nederland), World Cancer Research Fund (WCRF), Statistics Netherlands (The Netherlands); ERC-2009-AdG 232997 and Nordforsk, Nordic Centre of Excellence programme on Food, Nutrition and Health (Norway); Health Research Fund (FIS), PI13/00061 to Granada, PI13/01162 to EPIC-Murcia, Regional Governments of Andalucía, Asturias, Basque Country, Murcia and Navarra, ISCIII RETIC (RD06/0020) (Spain); Swedish Cancer Society, Swedish Research Council and County Councils of Skåne and Västerbotten (Sweden); and Cancer Research UK (14136 to EPIC-Norfolk; C570/A16491 and C8221/A19170 to EPIC-Oxford), Medical Research Council (1000143 to EPIC-Norfolk, MR/M012190/1 to EPIC-Oxford) (UK).

Competing interests TS received a studentship from the Medical Research Council (MR/M501712/1). DCM is supported by a Cancer Research UK Population Research Fellowship (C57955/A24390). KJA received a research grant from the German Research Foundation (DFG) (AL 1784/3-1), KEB received research grants from Cancer Research UK (C570/A16491) and the Medical Research Council (MR/M012190/1); no financial relationships with any organisations that might have an interest in the submitted work in the previous three years; KGMM is director of Research of a large (around 500 employees) research and teaching institute within his University Medical Center. They perform both investigator-driven and industry-driven research projects with a number of pharmaceutical and diagnostic companies. In addition, some of the members of staff receive unrestricted grants for research projects from a number of companies. It is their explicit policy to work with several companies and not to focus on one or two industrial partners. He receives no personal payment from any industrial partner.

Patient consent Not required.

Ethics approval All study participants provided written informed consent. Ethical approval for the EPIC study was obtained from the review boards of the International Agency for Research on Cancer and local participating centres: National Committee on Health Research Ethics (Denmark); Comité de Protection des Personnes (France); Ethics Committee of the Heidelberg University Medical School (Germany); Ethikkommission der Landesärztekammer Brandenburg Cottbus (Germany); University of Athens Medical School (Greece) Comitato Etico Indipendente, Fondazione IRCCS Istituto Nazionale dei Tumori (Italy); Human Genetics Foundation Torino Ethics Committee (Italy); Medical Ethical Committee (METC) of the University Medical Center Utrecht (The Netherlands); Regional Ethical Committee for Northern Norway and the Norwegian Data Inspectorate (Norway); Comité de Ética de Investigación Clínica (Spain); Ethics Committee of Lund University (Sweden); Umea Regional Ethical Review Board (Sweden); Norwich District Ethics Committee (UK); Scotland A Research Ethics Committee (UK); and the Imperial College Research Ethics Committee (UK). Approval for this research was obtained from the UK Biobank Research Ethics Committee and Human Tissue Authority, and the participants gave informed consent.

Provenance and peer review Not commissioned; externally peer reviewed.

Data sharing statement This research has been conducted using the UK Biobank Resource under Application Number 19266. UK Biobank is an open-access resource. Bona fide researchers can apply to use the UK Biobank dataset by registering and applying at <http://ukbiobank.ac.uk/register-apply/>. For information on how to submit an application for gaining access to EPIC data and/or biospecimens, please follow the instructions at <http://epic.iarc.fr/access/index.php>. The EPIC raw data cannot be made freely available because of restrictions imposed by the Ethical Committee, which does not allow open/public sharing of data on individuals. However, aggregated data are available for other researchers on request. Requests should be sent to Dr Ioanna Tzoulaki, i.tzoulaki@imperial.ac.uk. For information on how to submit an application for gaining access to EPIC data and/or biospecimens, please follow the instructions at <http://epic.iarc.fr/access/index.php>.

Open access This is an open access article distributed in accordance with the terms of the Creative Commons Attribution (CC BY 4.0) license, which permits others

to distribute, remix, adapt and build upon this work, for commercial use, provided the original work is properly cited. See: <http://creativecommons.org/licenses/by/4.0/>

© Article author(s) (or their employer(s) unless otherwise stated in the text of the article) 2019. All rights reserved. No commercial use is permitted unless otherwise expressly granted.

REFERENCES

- 1 Ferlay J, Soerjomataram I, Ervik M, *et al*. *GLOBOCAN 2012 v1.0, Cancer Incidence and Mortality Worldwide: IARC CancerBase No. 11* [Internet]. Lyon, France: International Agency for Research on Cancer, 2013.
- 2 Schreuders EH, Ruco A, Rabeneck L, *et al*. Colorectal cancer screening: a global overview of existing programmes. *Gut* 2015;64:1637–49.
- 3 Holme Ø, Bretthauer M, Fretheim A, *et al*. Flexible sigmoidoscopy versus faecal occult blood testing for colorectal cancer screening in asymptomatic individuals. *Cochrane Database Syst Rev* 2013;CD009259.
- 4 National Institute for Health and Care Excellence. Cardiovascular disease: risk assessment and reduction, including lipid modification. Clinical guideline [CG181]. 2014 <https://www.nice.org.uk/guidance/cg181/chapter/1-recommendations> (accessed 4th Aug 2017).
- 5 Usher-Smith JA, Walter FM, Emery JD, *et al*. Risk Prediction Models for Colorectal Cancer: A Systematic Review. *Cancer Prev Res* 2016;9:13–26.
- 6 Moons KG, de Groot JA, Bouwmeester W, *et al*. Critical appraisal and data extraction for systematic reviews of prediction modelling studies: the CHARMS checklist. *PLoS Med* 2014;11:e1001744–1676.
- 7 Freedman AN, Slatery ML, Ballard-Barbash R, *et al*. Colorectal cancer risk prediction tool for white men and women without known susceptibility. *J Clin Oncol* 2009;27:686–93.
- 8 Taylor DP, Stoddard GJ, Burt RW, *et al*. How well does family history predict who will get colorectal cancer? Implications for cancer screening and counseling. *Genet Med* 2011;13:385–91.
- 9 Ma E, Sasazuki S, Iwasaki M, *et al*. 10-Year risk of colorectal cancer: development and validation of a prediction model in middle-aged Japanese men. *Cancer Epidemiol* 2010;34:534–41.
- 10 Steffen A, MacInnis RJ, Joshy G, *et al*. Development and validation of a risk score predicting risk of colorectal cancer. *Cancer Epidemiol Biomarkers Prev* 2014;23:2543–52.
- 11 Riboli E, Hunt KJ, Slimani N, *et al*. European Prospective Investigation into Cancer and Nutrition (EPIC): study populations and data collection. *Public Health Nutr* 2002;5:1113–24.
- 12 International Agency for Research on Cancer, World Health Organization. About EPIC, Study Resources. <http://epic.iarc.fr/about/vitalstatus.php> (accessed 3 Jul 2017).
- 13 UK Biobank. Faqs. <http://www.ukbiobank.ac.uk/all-faqs/> (accessed 19th Jun 2017).
- 14 Sudlow C, Gallacher J, Allen N, *et al*. UK biobank: an open access resource for identifying the causes of a wide range of complex diseases of middle and old age. *PLoS Med* 2015;12:e1001779.
- 15 UK Biobank. Cancer data: a report on the number of prevalent and incident cases. 2017 http://biobank.ctsu.ox.ac.uk/~bbdata/prevalent-incident-cancers_doc.pdf (accessed 3 Jul 2017).
- 16 White IR, Royston P. Imputing missing covariate values for the Cox model. *Stat Med* 2009;28:1982–98.
- 17 World Cancer Research Fund International / American Institute for Cancer Research. *Continuous Update Project Report: Diet, Nutrition, Physical Activity and Colorectal Cancer*. Arlington: American Institute for Cancer Research, 2017.
- 18 Cogliano VJ, Baan R, Straif K, *et al*. Preventable exposures associated with human cancers. *J Natl Cancer Inst* 2011;103:1827–39.
- 19 Newson R. *SOMERSD: Stata module to calculate Kendall's tau-a, Somers' D and median differences [program]*. S336401 version. Boston: Boston College Department of Economics, 1998.
- 20 Harrell FE, Califf RM, Pryor DB, *et al*. Evaluating the yield of medical tests. *JAMA* 1982;247:2543–6.
- 21 Newson R. Parameters behind "nonparametric" statistics: Kendall's tau, Somers' D and median differences. *The Stata Journal* 2002;2:45–64.
- 22 Pencina MJ, D'Agostino RB, Song L. Quantifying discrimination of Framingham risk functions with different survival C statistics. *Stat Med* 2012;31:1543–53.
- 23 Colditz GA, Atwood KA, Emmons K, *et al*. Harvard report on cancer prevention volume 4: Harvard Cancer Risk Index. Risk Index Working Group, Harvard Center for Cancer Prevention. *Cancer Causes Control* 2000;11:477–88.
- 24 Driver JA, Gaziano JM, Gelber RP, *et al*. Development of a risk score for colorectal cancer in men. *Am J Med* 2007;120:257–63.
- 25 Shin A, Joo J, Yang HR, *et al*. Risk prediction model for colorectal cancer: National Health Insurance Corporation study, Korea. *PLoS One* 2014;9:e88079.
- 26 Wells BJ, Kattan MW, Cooper GS, *et al*. Colorectal cancer predicted risk online (CRC-PRO) calculator using data from the multi-ethnic cohort study. *J Am Board Fam Med* 2014;27:42–55.
- 27 Snell KI, Ensor J, Debray TP, *et al*. Meta-analysis of prediction model performance across multiple studies: Which scale helps ensure between-study

- normality for the C-statistic and calibration measures? *Stat Methods Med Res* 2017;096228021770567–0334.
- 28 Harris R, Bradburn M, Deeks J. *METAN: Stata module for fixed and random effects meta-analysis [program] S456798 version*. Boston: Boston College Department of Economics, 2006.
 - 29 Cox N. *SAVESOME: Stata module to save subset of data [program]. S418401 version*. Boston: Boston College Department of Economics, 2001.
 - 30 Newson R. *ECLPLOT: Stata module to generate estimates and confidence limits plots [program]. S431601 version*. Boston: Boston College Department of Economics, 2003.
 - 31 grc1leg. *Combine graphs into one graph with a common legend [program]*. Texas: StataCorp, 2003.
 - 32 Newson R. *SENCODE: Stata module to encode a string variable non-alphanumerically into a numeric variable [program]. S417701 version*. Boston: Boston College Department of Economics, 2001.
 - 33 National Cancer Institute Division of Cancer Epidemiology and Genetics. Colon Cancer Risk Assessment - SAS Macro. <https://dceg.cancer.gov/tools/risk-assessment/ccratsasmacro> (accessed 23 Jun 2017).
 - 34 Abbasi A, Peelen LM, Corpeleijn E, et al. Prediction models for risk of developing type 2 diabetes: systematic literature search and independent external validation study. *BMJ* 2012;345:e5900.
 - 35 Geurts SM, Massat NJ, Duffy SW. Likely effect of adding flexible sigmoidoscopy to the English NHS Bowel Cancer Screening Programme: impact on colorectal cancer cases and deaths. *Br J Cancer* 2015;113:142–9.
 - 36 Cancer Services, Public Health England. Demographics, Screening and Diagnostics. <https://fingertips.phe.org.uk/profile/cancerservices/data#page/0> (accessed 18 Oct 2017).
 - 37 Wardle J, Sutton S, Williamson S, et al. Psychosocial influences on older adults' interest in participating in bowel cancer screening. *Prev Med* 2000;31:323–34.
 - 38 Atkinson TM, Salz T, Touza KK, et al. Does colorectal cancer risk perception predict screening behavior? A systematic review and meta-analysis. *J Behav Med* 2015;38:837–50.
 - 39 Janssen KJ, Vergouwe Y, Donders AR, et al. Dealing with missing predictor values when applying clinical prediction models. *Clin Chem* 2009;55:994–1001.
 - 40 Fletcher Mercaldo S, Blume JD. Missing Data and Prediction. ArXiv e-prints. 2017;1704 <http://adsabs.harvard.edu/abs/2017arXiv170408192F>
 - 41 Damen JA, Hooft L, Schuit E, et al. Prediction models for cardiovascular disease risk in the general population: systematic review. *BMJ* 2016;353:i2416.
 - 42 Kim DJ, Rockhill B, Colditz GA. Validation of the Harvard Cancer Risk Index: a prediction tool for individual cancer risk. *J Clin Epidemiol* 2004;57:332–40.
 - 43 Park Y, Freedman AN, Gail MH, et al. Validation of a colorectal cancer risk prediction model among white patients age 50 years and older. *J Clin Oncol* 2009;27:694–8.



Minerva Access is the Institutional Repository of The University of Melbourne

Author/s:

Smith, T; Muller, DC; Moons, KGM; Cross, AJ; Johansson, M; Ferrari, P; Fagherazzi, G; Peeters, PHM; Severi, G; Huesing, A; Kaaks, R; Tjonneland, A; Olsen, A; Overvad, K; Bonet, C; Rodriguez-Barranco, M; Huerta, JM; Gurrea, AB; Bradbury, KE; Trichopoulou, A; Bamia, C; Orfanos, P; Palli, D; Pala, V; Vineis, P; Bueno-de-Mesquita, B; Ohlsson, B; Harlid, S; Van Guelpen, B; Skeie, G; Weiderpass, E; Jenab, M; Murphy, N; Riboli, E; Gunter, MJ; Aleksandrova, KJ; Tzoulaki, I

Title:

Comparison of prognostic models to predict the occurrence of colorectal cancer in asymptomatic individuals: a systematic literature review and external validation in the EPIC and UK Biobank prospective cohort studies

Date:

2019-04-01

Citation:

Smith, T., Muller, D. C., Moons, K. G. M., Cross, A. J., Johansson, M., Ferrari, P., Fagherazzi, G., Peeters, P. H. M., Severi, G., Huesing, A., Kaaks, R., Tjonneland, A., Olsen, A., Overvad, K., Bonet, C., Rodriguez-Barranco, M., Huerta, J. M., Gurrea, A. B., Bradbury, K. E., Tzoulaki, I. (2019). Comparison of prognostic models to predict the occurrence of colorectal cancer in asymptomatic individuals: a systematic literature review and external validation in the EPIC and UK Biobank prospective cohort studies. *GUT*, 68 (4), pp.672-683. <https://doi.org/10.1136/gutjnl-2017-315730>.

Persistent Link:

<http://hdl.handle.net/11343/254815>

File Description:

Published version

License:

CC BY