

Technical Note

Artificial Intelligence in the Sorting of Municipal Waste as an Enabler of the Circular Economy

Henning Wilts ^{1,*}, Beatriz Riesco Garcia ², Rebeca Guerra Garlito ², Laura Saralegui Gómez ³
and Elisabet González Prieto ³

¹ Wuppertal Institute for Climate, Environment and Energy gGmbH, 42103 Wuppertal, Germany

² Centre for Innovation in Smart Infrastructure in Guadalajara, 19005 Guadalajara, Spain; briesco@ci3.es (B.R.G.); rguerra@ci3.es (R.G.G.)

³ Ferrovial Services, 28050 Madrid and 08038 Barcelona, Spain; laura.saralegui@ferrovial.com (L.S.G.); e.gonzalez@ferrovial.com (E.G.P.)

* Correspondence: henningwi@wupperinst.org

Abstract: The recently finalized research project “ZRR for municipal waste” aimed at testing and evaluating the automation of municipal waste sorting plants by supplementing or replacing manual sorting, with sorting by a robot with artificial intelligence (ZRR). The objectives were to increase the current recycling rates and the purity of the recovered materials; to collect additional materials from the current rejected flows; and to improve the working conditions of the workers, who could then concentrate on, among other things, the maintenance of the robots. Based on the empirical results of the project, this paper presents the main results of the training and operation of the robotic sorting system based on artificial intelligence, which, to our knowledge, is the first attempt at an application for the separation of bulky municipal solid waste (MSW) and an installation in a full-scale waste treatment plant. The key questions for the research project included (a) the design of test protocols to assess the quality of the sorting process and (b) the evaluation of the performance quality in the first six months of the training of the underlying artificial intelligence and its database.

Keywords: artificial intelligence; circular economy; municipal solid waste



Citation: Wilts, H.; Garcia, B.R.; Garlito, R.G.; Gómez, L.S.; Prieto, E.G. Artificial Intelligence in the Sorting of Municipal Waste as an Enabler of the Circular Economy. *Resources* **2021**, *10*, 28. <https://doi.org/10.3390/resources10040028>

Academic Editors: Eva Pongrácz and Jenni Ylä-Mella

Received: 10 January 2021

Accepted: 18 March 2021

Published: 29 March 2021

Publisher's Note: MDPI stays neutral with regard to jurisdictional claims in published maps and institutional affiliations.



Copyright: © 2021 by the authors. Licensee MDPI, Basel, Switzerland. This article is an open access article distributed under the terms and conditions of the Creative Commons Attribution (CC BY) license (<https://creativecommons.org/licenses/by/4.0/>).

1. Introduction

Artificial intelligence and the use of robots in sorting could, in the future, make a significant contribution to the production of high-quality secondary raw materials from waste, in the sense of a recycling economy. Within the framework of a pilot study financed by the European Institute of Innovation and Technology (EIT) Climate-KIC, a European research consortium led by Ferrovial Services, NTU International and the Wuppertal Institute tested and evaluated such an AI solution. The robot was installed near Barcelona in an existing municipal waste sorting plant and tested on real municipal waste. The results have been evaluated with regard to sorting quality and purity of the relevant material flows, as well as initial estimates from a socio-economic perspective. The results allowed first conclusions to be drawn on both opportunities and risks of digital waste management: heterogeneous waste streams, such as household waste, still pose considerable challenges for robotic systems but also offer impressive learning curves for the development of sorting quality during the test phase. Overall, it is clear that technological solutions alone cannot make the leap to recycling management—but they are becoming an increasingly important part of a transformation of the entire value chain, from product design to disposal.

Transforming our current linear patterns of production and consumption towards a circular system, in which the value and quality of products, components and raw materials are optimally preserved at the end of their use phase, is increasingly seen as a key challenge for achieving sustainability goals as well as ensuring future industrial competitiveness [1–3]. Against this background, the European Commission in 2015 initiated its Circular Economy

Action Plan that indicated key action fields for this complex transformation. Although the circular economy clearly goes beyond a waste perspective, waste management will also have to be radically improved in order to recover high-quality secondary raw materials that can be re-fed into industrial processes. A particular challenge is the optimization of sorting plants for various types of municipal waste, which increasingly seem to be reaching their limits. It is therefore not surprising that the efficiency of waste sorting is stagnating, although at a high level. Current European municipal waste sorting plants are highly automated, thanks to equipment such as bag openers, trommels, ballistic separators, optical sorters, magnets, eddy current separators and pneumatic collection systems. However, some sorting tasks still have to be carried out manually (manual picking), e.g., the quality control of recovered material, and the manual sorting of oversize and waste streams that still contain a significant number of recyclables that are incinerated or disposed of if not properly sorted out. In both cases, these are tasks performed in low ergonomic work environments (noise, direct contact with waste, lifting and moving heavy objects) and performance decreases during the work shift. Key barriers to material recovery in sorting plants include sharp objects and odors, low ergonomics and efficiency losses [4].

Against this background, the use of digitalization technologies such as robotics in waste management, and especially the sorting of municipal waste, will become decisive next steps in the transformation towards a circular economy [5]. Many of the identified barriers could be addressed with the help of computer vision, machine learning and robotics (based on optical recognition and intelligent evaluation algorithms). The arrival of artificial intelligence and robotic technology has the potential to revolutionize the design and operation of municipal waste sorting plants [6]. This could lead to increased operational efficiency and thus to a more sustainable management of municipal waste.

Nevertheless, an initial review of the existing literature has shown a clear lack of empirical data on how exactly artificial intelligence improves waste sorting. Most of the available literature either stays on a purely conceptual level, and simply describes how or which specific activities could be used, or it doesn't provide actual data that would allow assessing the strengths and weaknesses of specific robot installations [7–11]. Leif (2018) for example describes five potential key advantages of robotic sorting, e.g., an improved alignment with recycling markets, but also emphasizes the need for pilot studies and economic validation [10]. This paper aims to address this specific gap by providing data based on a transparent evaluation protocol with a variety of data points for different materials.

The guiding research question for this paper, and the underlying research, has been the empirical validation of the often-claimed contributions of artificial intelligence for the circular economy. By evaluating the initial training phase of such a robot under real-life conditions it aims to provide new insights into how exactly robots could be used as enablers of closing material loops.

2. Opportunities of Digitalization in Waste Sorting

Waste sorting plants, together with the disposal infrastructure, serve as filters in the value chain of waste management by removing more or less precisely sorted material fractions, which can be diverted directly into production or sold as raw materials on the local or global market, and reducing the amount of waste from final disposal. For this reason, the sorting of municipal waste has become a relevant research topic in recent decades. In general, there are two technical approaches to sorting waste into individual material streams: manual sorting and automated/mechanical sorting. In most cases, sorting plants use a combination of manual and automated sorting techniques, as some steps in the sorting process are best handled manually. Other steps, on the other hand, benefit from more targeted, safer and cost-effective automation. There are various technologies that can be used to sort different waste streams. These depend on the type of waste stream, e.g., waste screening (trommel, disc or oscillating screen), air separation (zigzag, rotary and crossflow classifiers, or suction hood), ballistic separation, film grippers, magnetic sorting,

eddy current separation, sensor technology and manual sorting. Most of the time, these technologies are used in combination [11].

Robotic technology promises a significant increase in the sorting performance of some waste streams and could be particularly valuable in waste streams containing hazardous substances, as it could allow fine sorting without human intervention. Typically, a conveyor belt passes the waste past a bundle of sensors, for example, cameras with visible spectral range, spectroscopic near-infrared cameras, 3D laser scanners, and metal sensors, while robot arms work above the conveyor belt and remove materials as the waste passes underneath. One of the main advantages of robotics is that it does not have to focus on a single type of waste but can collect different types at the same time and store them in separate containers. Sorting techniques that do not rely on the physical properties of a material for separation require material identification. As the accuracy and sensitivity of these technologies continue to improve, new technologies are being developed to identify different materials in waste streams. For example, the use of RFID tags in packaging has been considered to enable the identification and classification of individually packaged items. The concept envisages embedding RFID tags in individual packaging items, which can then be read either at pick up or in the sorting system to enable the precise sorting of different types of plastic [12].

Gundupalli et al. (2017) carried out a comprehensive market analysis that identifies different commercial solutions available to fully automate the mechanical waste treatment process [13]. Among the options analyzed is the ZRR2 system: a recycling robot that is considered to be the world's first robot-driven waste sorting device with artificial intelligence (AI). These robots, equipped with computer vision and deep learning algorithms, separate precisely selected waste fractions from solid construction and demolition (C&D) waste. A single ZRR robot arm is capable of handling up to four different fractions with a purity of up to 98%. However, the ZRR robot has so far only been used for construction and demolition waste, and has been specially developed to increase its efficiency and reduce the cost of waste separation for typical construction materials. As part of this research project, the ZRR robot was used for the first time to sort municipal household waste streams. This is a very demanding scenario due to the different sorting conditions, waste compositions and morphology, which requires an extension of the scope of the technology. In particular, the ZRR robot must be able to identify and sort the following materials: Metals (ferrous and non-ferrous), wood, hard plastics (mixed plastics and hoses and pipes), hard materials (mixed materials, concrete, bricks, limestone, asphalt, etc.), cardboard, and plastic bags by color. In addition, the technology must also adapt the gripping system to the new waste conditions. To work with a municipal waste stream the robot must be trained in this project to recognize and sort new materials: textile, cardboard (OCC), high-density polyethylene (HDPE), low-density polyethylene (LDPE), polypropylene (PP), Tetra Pak, and printing and green waste. In its application with municipal waste, the robot also works under more demanding conditions that could interfere with detection: higher conveying speeds, multilayer distribution of the waste over the conveyor belt, the presence of dust, alkalis and organic waste.

3. Materials and Methods

As outlined above, this paper aims to provide systematically recorded empirical data on the strengths and weaknesses of such robot systems. In order to develop an empirical basis for the assessment of artificial intelligence as an enabler of improved sorting of municipal solid waste, an industrial-scale pilot plant has been set up. The system was installed at the Ecorparc4 municipal waste sorting plant in Barcelona that receives an average of 300,000 tons of municipal waste per year.

The following describes the installation of the system and its key characteristics, as well as the methodological approach for a systematic evaluation of sorting accuracy and efficiency. This required the development of a standardized data recording protocol.

3.1. Installation of the Test System

The empirical tests within the project were carried out with a ZRR2 robot system from ZenRobotics from Finland. The robot consisted of two robot arms equipped with several sensors (placed above a conveyor belt), including a truck, a metal detector, a high-resolution RGB camera, an NIR sensor (near-infrared spectrum), a VIS sensor (visual light spectrum) and a deep learning-based software. Within the plant, the robot was installed above the bulky waste conveyor belt (see Figure 1), and a waste stream that had not yet been recycled in this plant. The entire system is located on a platform with over eight different hoppers (four hoppers per robot arm) and is integrated into the current plant sorting process in order to take into account aspects such as ensuring a monolayer flow to the robot inlet or the possibility of testing the technology with other waste streams.

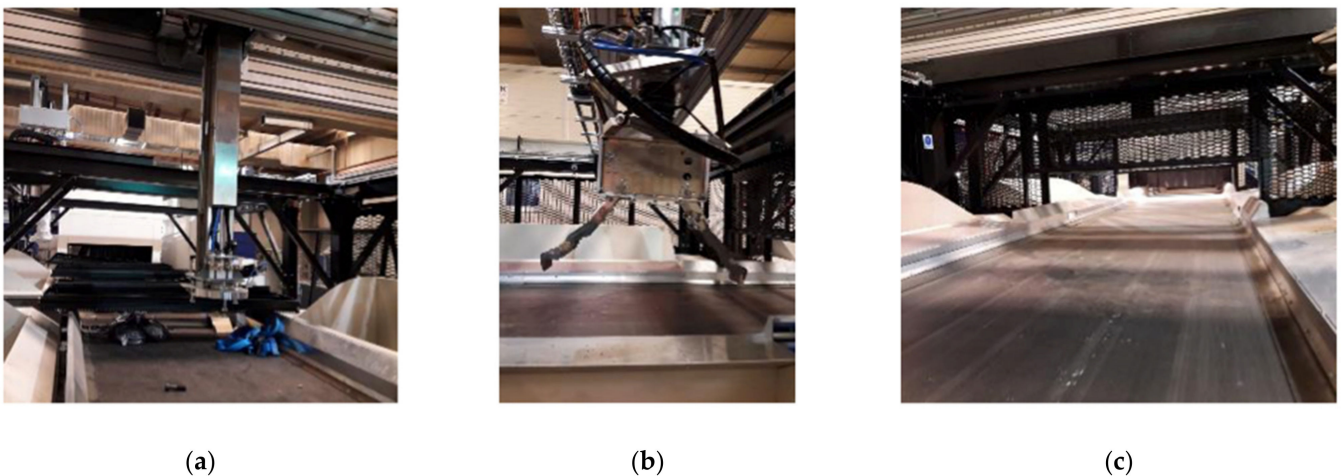


Figure 1. Robot deployment in Ecorparc 4 in Barcelona, Spain: (a) Front view of the picking arm; (b) side view of the picking arm; (c) sorting belt [14].

At the beginning of the project, an evaluation methodology and concrete test protocols were developed on the basis of literature evaluations and expert interviews. This should enable an assessment of the sorting quality of the robot. In this context, key parameters for the input materials, the process and the starting materials were defined. The product groups were PET bottles, plastic films (LDPE), aluminum, ferrous metals, PE boxes, large PE bottles, paper/cardboard, PP, (untreated) wood, textiles, Tetra Pak and vegetable substances. Within the project, samples of 250kg each were used for training and evaluation. For the process parameters, the sorting belt speed (m/s), the configuration of the hopper position for the selected materials, the priority settings and the gripper system settings were recorded. The output parameters were divided into robot throughput (global for two arms) in kg/min (picks/min) and in percentage of effective picks on the one hand and sorting efficiency on the other hand. The selection efficiency of the pre-processing system was analyzed in terms of sorting quality/purity (impurities in the target materials as a percentage of weight, as well as the occurrence of target materials in the unsorted residual waste), the color and size of incorrectly sorted products and the recovery rate (kg of recovery per kg of fraction in the input stream as a percentage). The tests with the ZRR2 started with training the robot, then the sorting was tested under optimal feeding conditions (i.e., optimal speed and amount of waste stream). The last test consisted of a continuous test in which the flow of the waste streams was continuously increased up to the amount required in practice.

3.2. Training of the Robot

In a first training phase, the robot was trained to recognize and sort the desired waste products. Once the correct feeding conditions were reached, the artificial intelligence of the ZRR robot had to be trained to identify the 13 different materials or waste streams: Ferrous

metals, non-ferrous metals, textiles, cardboard, HDPE, LDPE, PP, wood, PET, paper, other mixed plastics, Tetra Pak, printing and green waste. The robot was fed two hours a day with the selected material. The training procedure was divided into 10 steps:

1. Gather samples of the new fraction to avoid 1000 articles of different sizes, shapes and material types.
2. Name the new fraction in the Intelligence Unit.
3. Feed samples manually to the sorting belt.
4. ZRR sensor unit scans the new material.
5. ZRR brain analyses data.
6. ZRR smart gripper picks the objects.
7. Take any rejected objects.
8. Feed those objects again to the sorting belt.
9. ZRR sensor unit scans those objects again.
10. The ZRR learned a new fraction.

Depending on the complexity of the waste stream, the process described above was repeated several times until the desired results were obtained for this particular material stream. Figure 2 below illustrates the procedure of this robot training.

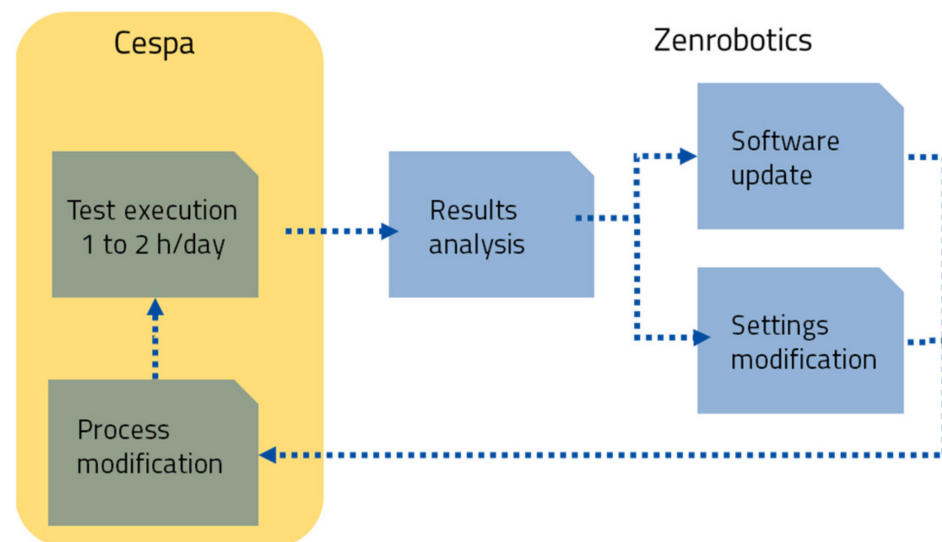


Figure 2. Robot training procedure [14].

3.3. Test under Optimal Feeding Conditions

The subsequent tests under optimal feeding conditions consisted of providing the robot with a singularized monolayer in which all objects were arranged in a single layer and did not overlap, i.e., under ideal feeding conditions. Under such conditions, it was possible to find out to what extent the training of the recycler and the database setup was successful and how the reference purity and the degree of recovery of the sorted fractions could be estimated.

$$\text{Purity (\%)} = \frac{\text{Amount of target material}}{\text{Total weight of sorted material in the hopper}} \quad (1)$$

$$\text{Recovery (\%)} = \frac{\text{Amount of picked target material (hopper)}}{\text{Total amount of fed target material}} \quad (2)$$

After the training, the performance of the robot was tested in five tests between November 2018 and March 2019 with regard to fraction purity and waste recovery. Two different types of test methods were used in these five tests. On the one hand, tests were carried out with a low feeding rate (about 1000 picks/h)—giving the robot more time to

identify the materials—and on the other hand, with a low sorting rate (sorting of only 3 to 6 materials per test).

In this first phase, the robot was manually supplied with previously classified waste from the waste stream over a period of 15–30 min. At the end of the experiment, all the recovered fractions were weighed, as well as the waste separations, the performance was calculated and any necessary adjustments were made. In the operational tests, the robot was supplied or fed with the designed material flows over a longer period of time under real process conditions.

The designed tests evaluated the robot's performance by measuring detection efficiency, picking efficiency, robot availability and fraction purity, as well as the influence of key operating variables on the robot's performance. First, the robot test was performed by changing the process parameters. The results were then analyzed and ZenRobotics updated the robot software based on deep learning algorithms. The objectives of the tests were the following:

1. Train the ZRR to recognize fractions of interest.
2. Determine the purity and recovery rate in ideal conditions.
3. Determine the maximum feeding rate and associated purity.
4. Train the robot to ignore large piles.
5. Find out how to feed the robot to satisfy operational criteria.

4. Results

Using the process presented, 500 to 1000 pieces per fraction were collected for the 13 different materials for robot identification training and then manually fed to the sorting belt. Several iterations were required to achieve adequate performance. Figure 3 shows the results of the robot testing for the main material types, performed in single tests:

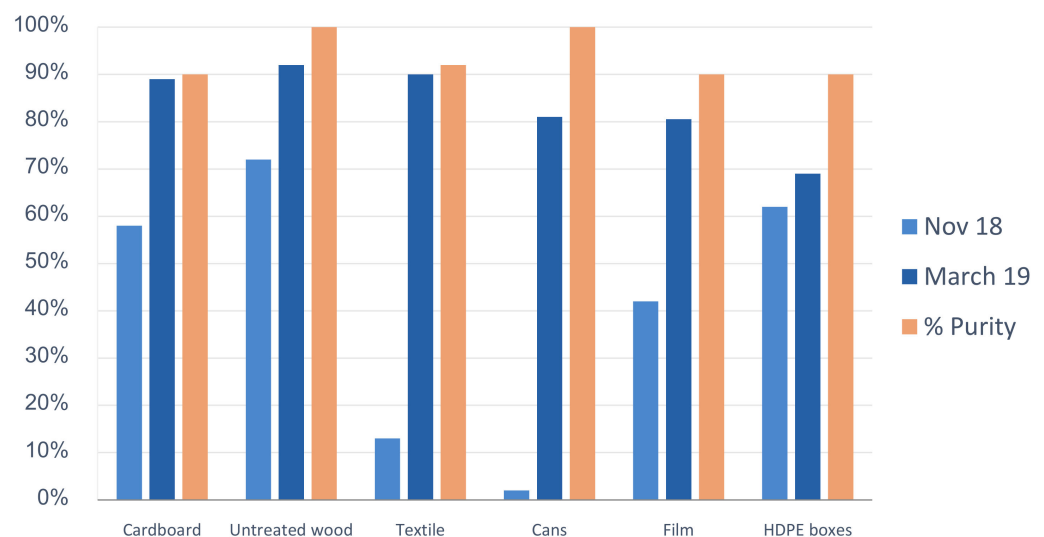


Figure 3. Stand-alone test results [14].

As a result of the systematic training and operation, the detection of the robot for all 13 materials could be increased, almost doubling the robot's detection capability. It is then planned that the capacity of the system will be increased and that it will be able to identify new materials in the waste stream by implementing updatable, intelligent, self-learning software.

In the next phase, the throughput was gradually increased until the desired throughput for production was achieved. In some cases, a monolayer of the material could no longer be guaranteed, objects began to overlap, touch and cover each other. Under such conditions, the ZRR robot showed increasing difficulties in detecting and handling objects.

So far, an average purity of 90% has been achieved for the 13 materials in the tests carried out. Figure 4 shows the overall results of the materials: aluminum, foil, high-density polyethylene (HDPE), cardboard, textiles and wood.



Figure 4. Training test results for aluminum, film, HDPE, cardboard, textile and wood [15].

5. Discussion

The results obtained are promising with regard to the purity of the sorted waste fractions, as the purity in almost all separated materials clearly exceeded the original expectations with values up to 100%. However, the results for waste recovery were not so successful as there were certain proportions where only 13% of recovery (textiles) (or even less for aluminum) was achieved. The difficulties identified leading to these results are related to the different composition and morphology of municipal waste compared to construction and demolition waste, resulting in lower detection and therefore lower sorting performance.

In addition, some challenges for the use of robots could be identified. A high-performance communication data network is required that can be optimized by a 20 Mb/20 Mb data network. For long waste pieces (e.g., textiles, foils, paper and cardboard) there are also difficulties in the gripping process. The unstable inflow of waste is also a challenge that can be solved with a measuring sensor. Finally, there is the problem of multi-layer and non-uniform distribution of waste over the conveyor belt, which must be eliminated by adjusting the speed conveyor and redesigning the robotic waste feeding system [4].

To date, the ZRR2 has achieved an average purity of 97% for all 13 waste streams tested. Figure 5 shows the general results and the findings from the robot tests. In addition, some measures have been identified that could improve the results of the robot sorting, e.g., weekly updating of the sorter, mechanical modification of the plant, improvement of the software gripping strategy and adaptation of the waste sorting process, such as the installation of a roller chute to support waste during the disintegration process, or the redirection of part of the bulky waste stream (mainly closed bags) into the plant inlet, which also reduces the amount of waste the robot has to process.

To our knowledge, this is the first scientific publication that presents empirical data on the use of an AI-based robotic sorting system for mixed municipal waste, a comparison with other robot systems should be the next step to validate these results. Further tests should also investigate how the efficiency of recovery can be increased, by optimizing the process parameters of the waste disposal plant, e.g., adjustment of the speed belt, distributor belt and hopper arrangement. The main difficulties observed during the operation of the robot were associated with the different composition and morphology of municipal

waste compared to construction and demolition waste, resulting in lower detection and sorting efficiency.

	Recognition	Purity	Recovery
Results	> 95 %	[82-100%] Average 97%	[4-93%] Average 67%
Lessons Learned	<ul style="list-style-type: none"> • High number of items in the classifier increases efficiency • Periodic classifier updating 	<ul style="list-style-type: none"> • What the robot attempts to pick, it picks it with high efficiency • Mistakes are due to: <ul style="list-style-type: none"> - Recognition errors - Grasping of other materials together with targeted one 	<ul style="list-style-type: none"> • High gap between recognition and sorting attempt due to: <ul style="list-style-type: none"> - Waste distribution - Flow rates • Grasping difficulties with long shaped waste • Material jams in collection hoppers and conveyer
Actions	<ul style="list-style-type: none"> • Weekly classifier updating 	<ul style="list-style-type: none"> • Mechanical modification of the plant to avoid clogging in the conveyer and hoppers; damages in the robot; ... • A.I. software grasping strategy improvement for particular materials • Ecoparc4 waste sorting process adjustment to favour steady waste distribution 	

Figure 5. General results and lessons learned from the robot testing [15].

6. Conclusions

Based on the analysis of the empirical results presented in this paper, first conclusions can be drawn on the overall environmental impacts of artificial intelligence on waste sorting and recovery of raw materials from municipal solid waste. There seems to be significant evidence that if a further adaptation and optimization to the operating conditions of a real waste treatment plant will be successful, significant benefits could be realized: from an ecological point of view, it reduces the amount of waste deposited in landfills and increases the recovery of recyclable waste as highlighted in the specific test application in Barcelona.

Overall, there is still a need to integrate the increasing digitalization of waste management in its various forms and to not consider it solely from the perspective of material recovery quotas. The increasing use of robots, for example, is likely to lead to the loss of jobs with low qualification requirements, which will clearly lead to uncertainty among employees; who, at the same time, emphasize the opportunities for reduced accident risks.

However, the commercial use of data on the composition of household waste leads to conceivable conflicts with data protection. Further research on systemic effects of increased digitalization will be necessary as part of a future sustainability agenda for digitization; here, the topic of recycling could be used as an example to discuss which framework conditions, specifications and incentives will be needed in order to use digitization as an instrument both for future competitiveness and for achieving the set sustainability goals [16].

Author Contributions: All authors have equally contributed to the conceptualization and methodology. H.W. has been responsible for the writing process, R.G.G., E.G.P., B.R.G. and L.S.G. for the review and editing. All authors have read and agreed to the published version of the manuscript.

Funding: This research project was funded by EIT Climate-KIC.

Institutional Review Board Statement: Not applicable.

Informed Consent Statement: Not applicable.

Conflicts of Interest: The authors declare no conflict of interest.

References

1. Ellen MacArthur Foundation. *Towards a Circular Economy: Business Rationale for an Accelerated Transition*; Ellen MacArthur Foundation: Cowes, UK, 2015.
2. Kirchherr, J.; Reike, D.; Hekkert, M. Conceptualizing the circular economy: An analysis of 114 definitions. *Resour. Conserv. Recycl.* **2017**, *127*, 221–232. [[CrossRef](#)]
3. Material Economics. *The Circular Economy. A Powerful Force for Climate Mitigation. Transformative Innovation for Prosperous and Low-Carbon Industry*; Material Economics Sverige AB: Stockholm, Sweden, 2018.
4. González, E. *Robotics, Artificial Intelligence and Vision Applied to Waste Sorting: ZRR for Municipal Waste*; EIT Climate-KIC: Porto, Portugal, 2019.
5. Wilts, C.H.; Berg, H. Digital cycles and digital scrap: How digitization improves resource efficiency in the circular economy; and where it tends to cost resources. *J. Waste Recycl.* **2018**, *3*. Available online: <https://nbn-resolving.org/urn:nbn:de:bsz:wup4-opus-69785> (accessed on 4 January 2021).
6. ISWA. *Working Together towards a Cleaner, Healthier Planet*; ISWA Annual Report 2017; ISWA: Washington, DC, USA, 2017.
7. Osterloh, L. Sorting of Waste to Enable Circular Economy, Brussels, TOMRA Sorting Solutions. 2017. Available online: <https://cdn.nimbu.io/s/gcj6927/channelentries/metfhvs/files/20171024%2011u55%20Osterloh%20L%20-%20TOMRA.pdf?kynqikq> (accessed on 4 January 2021).
8. Maitrot, A. Machine Learning for Automatic Waste Sorting, ENSTA Bretagne & Veolia. 2017. Available online: https://www.ensta-bretagne.fr/jaulin/rapport_pfe_lei%20zhu.pdf (accessed on 4 January 2021).
9. Tarbell, A.K.; Tchong, D.; Lewis, M.R.; Newell, T. *Applying Machine Learning to the Sorting of Recyclable Containers*; University of Illinois at Urbana-Champaign Urbana: Urbana, IL, USA, 2010.
10. Leif, D.; Real Impacts for Artificial Intelligence. *Resource Recycling Magazine*. 2018. Available online: <https://resource-recycling.com/recycling/2018/01/02/real-impacts-artificial-intelligence/> (accessed on 4 January 2021).
11. McKinnon, D.; Fazakerley, J.; Hultermans, R. *Waste Sorting Plants—Extracting Value from Waste*; ISWA: Vienna, Austria, 2017.
12. Abdoli, S. RFID Application in municipally solid waste management system. *Int. J. Environ. Res.* **2009**, *3*, 447–454.
13. Gundupalli, S.P.; Hait, S.; Thakur, A. A review on automated sorting of source-separated municipal solid waste for recycling. *Waste Manag.* **2017**, *60*, 56–74. [[CrossRef](#)] [[PubMed](#)]
14. Wilts, C.H.; Azak, G. *ZRR for Municipal Waste*; Report of Sorting Qualities; EIT Climate-KIC: Wuppertal, Germany, 2019.
15. Wilts, C.H.; Garcia, B.R.; Garlito, R.G.; Goómez, L.S.; Prieto, E.G.; Kwik, C.; Johannesen, K.; Künstliche Intelligenz in der Siedlungsabfallsortierung als Wegbereiter der Kreislaufwirtschaft. *Müll & Abfall*. 2020. Available online: <https://www.muellundabfall.de/ce/kuenstliche-intelligenz-in-der-siedlungsabfallsortierung-als-wegbereiter-der-kreislaufwirtschaft/detail.html> (accessed on 4 January 2021).
16. Bundesministerium für Umwelt, Naturschutz und nukleare Sicherheit. *Umwelt in Die Algorithmen! Eckpunkte für Eine Umwelt-politische Digitalagenda des BMU*; Bundesministerium für Umwelt, Naturschutz und nukleare Sicherheit: Berlin, Germany, 2019.