



Title	Class 1 integrons characterization and multilocus sequence typing of Salmonella spp. from swine production chains in Chiang Mai and Lamphun provinces, Thailand
Author(s)	Boonkhot, Phacharaporn; Tadee, Pakpoom; Yamsakul, Panuwat; Pocharoen, Chairroj; Chokesajjawatee, Nipa; Patchanee, Prapas
Citation	Japanese Journal of Veterinary Research, 63(2), 83-94
Issue Date	2015-05
DOI	10.14943/jjvr.63.2.83
Doc URL	<a href="http://hdl.handle.net/2115/59300">http://hdl.handle.net/2115/59300</a>
Type	bulletin (article)
File Information	Phacharaporn Boonkhot.pdf



[Instructions for use](#)

# Class 1 integrons characterization and multilocus sequence typing of *Salmonella* spp. from swine production chains in Chiang Mai and Lamphun provinces, Thailand

Phacharaporn Boonkhot<sup>1)</sup>, Pakpoom Tadee<sup>1)</sup>, Panuwat Yamsakul<sup>1)</sup>, Chairoj Pocharoen<sup>2)</sup>, Nipa Chokesajjawatee<sup>3)\*</sup> and Prapas Patchanee<sup>1)\*</sup>

<sup>1</sup> Department of Food Animal Clinics, Faculty of Veterinary Medicine, Chiang Mai University, Chiang Mai, Thailand

<sup>2</sup> The Fifth Regional Livestock Office, Department of Livestock Development, Chiang Mai, Thailand

<sup>3</sup> National Center for Genetic Engineering and Biotechnology, National Science and Technology Development Agency, Pathumthani, Thailand

Received for publication, March 5, 2015; accepted, May 12, 2015

## Abstract

**Pigs and pork products are well known as an important source of *Salmonella*, one of the major zoonotic foodborne pathogens. The emergence and spread of antimicrobial resistance is becoming a major public health concern worldwide. Integrons are genetic elements known to have a role in the acquisition and expression of genes conferring antibiotic resistance. This study focuses on the prevalence of class 1 integrons-carrying *Salmonella*, the genetic diversity of strains of those organisms obtained from swine production chains in Chiang Mai and Lamphun provinces, Thailand, using multilocus sequence typing (MLST) and comparison of genetic diversity of sequence types of *Salmonella* from this study with pulsotypes identified in previous study. In 175 *Salmonella* strains, the overall prevalence of class 1 integrons-carrying-*Salmonella* was 14%. The gene cassettes array pattern “*dfrA12-orfF-aadA2*” was the most frequently observed. Most of the antimicrobial resistance identified was not associated with related gene cassettes harbored by *Salmonella*. Six sequence types were generated from 30 randomly selected strains detected by MLST. *Salmonella* at the human-animal-environment interface was confirmed. Linkages both in the farm to slaughterhouse contamination route and the horizontal transmission of resistance genes were demonstrated. To reduce this problem, the use of antimicrobials in livestock should be controlled by veterinarians. Education and training of food handlers as well as promotion of safe methods of food consumption are important avenues for helping**

---

\*Co-corresponding author: Assoc. Prof. Dr. Prapas Patchanee

Phone: +66-53-948-002. Fax: +66-53-948-065. E-mail: patprapas@gmail.com, prapas.pat@cmu.ac.th

\*Co-corresponding author: Dr. Nipa Chokesajjawatee

Phone: +66-2564-6700 ext. 3252. Fax: +66-2564-6707. E-mail: nipa.cho@biotech.or.th

doi: 10.14943/jjvr.63.2.83

## prevent foodborne illness.

Key words: *Salmonella*, Integrons, MLST, Swine production, Thailand

### Introduction

*Salmonella* is an important zoonotic foodborne pathogen which is recognized as a major public health concern worldwide<sup>11,27</sup>. The organism is usually found in the digestive tracts of animals such as birds and reptiles as well as mammals<sup>16</sup>. Humans can become infected by consuming products contaminated with *Salmonella* from the digestive tract contents of those animals<sup>45</sup>. Foods obtained from farm animals are considered to be the main source of salmonellosis, especially pig products<sup>4,26</sup>. Pig farms are notorious as the initial point of contamination with *Salmonella* in the production chain<sup>29</sup>. The slaughtering process is acknowledged as another critical point that can result in the spread of the organism from pig guts to carcasses or other pig products<sup>36,41</sup>.

Antimicrobial resistant pathogens are a serious and growing phenomenon in human and veterinary medicine, and have become a major public health concern<sup>20</sup>. *Salmonella* has developed resistance to various types of antimicrobials, and multidrug resistant strains have been documented<sup>40</sup>. Consequently, choices of treatment, including first-line treatment options, are limited<sup>40</sup>. Moreover, antimicrobial resistant *Salmonella* may induce genetic mutations. In addition, acquisition of resistant genes from the same organism species or another organism species by horizontal gene transfer via mobile genetic elements such as integron gene cassettes, transposon gene and R-plasmid is possible<sup>17,43</sup>. Class 1 integrons are genetic elements known for their role in the acquisition and expression of genes conferring antibiotic resistance<sup>22</sup>. The structures are linear double strands of DNA, which are arranged in the 5' variable region and the 3' conserved region. The integrase gene (*int*), *attI* and a promoter are located in the 5' variable

region. In addition, the quaternary compound resistant gene (*QacEΔ1*) and sulfonamide resistant gene (*SuII*) are located at the end of the 3' conserved region. Integrons can play a role in multidrug resistance as gene cassettes can be inserted into them by integrase<sup>13,22,31</sup>.

Molecular techniques are essential for bacterial typing. They can provide the information needed to determine an infectious-disease transmission pattern, to allow tracking, as well as to distinguish between strains<sup>8</sup>. Pulsed field gel electrophoresis (PFGE) is considered the gold standard for *Salmonella* typing<sup>37</sup>. However, PFGE has several limitations: the method is technically demanding, and time-consuming, specialist. In addition, data obtained are limited compared to sequence-based methods<sup>30</sup>.

Multilocus sequence typing (MLST) may be more appropriate for investigation of evolutionary and population biology relationships. MLST is a molecular technique based on allelic differences in the nucleotide sequences of the housekeeping genes of various bacterial strains<sup>14</sup>. This method can be used to identify and evaluate interrelationships among *Salmonella* isolates as part of disease surveillance and outbreak investigations<sup>39</sup>. This study focuses on the prevalence of class 1 integrons-carrying *Salmonella*, the genetic diversity of strains of those organisms obtained from swine production chains in Chiang Mai and Lamphun provinces, Thailand, using multilocus sequence typing (MLST) and comparison of genetic diversity of sequence types of *Salmonella* from this study with pulstypes identified in previous study<sup>37</sup>.

### Materials and methods

*Salmonella* strains: One hundred and seventy-

**Table 1. Number of *Salmonella* strains tested**

<i>Salmonella</i> serotype	Number of <i>Salmonella</i> strain		
	Farm	Slaughterhouse	Total
<i>S.</i> I,4,5,12:i:-	12	5	17
<i>S.</i> Agona	0	2	2
<i>S.</i> Lexington	0	1	1
<i>S.</i> Panama	13	32	45
<i>S.</i> Rissen	27	31	58
<i>S.</i> Stanley	5	23	28
<i>S.</i> Typhimurium	10	2	12
<i>S.</i> Weltevreden	6	5	11
Total	73	102	175

One hundred and seventy-five *Salmonella* strains, initially identified as appropriate 8 serotypes were tested. These strains were recovered from pig farms ( $n = 73$ ) and pig slaughterhouses ( $n = 102$ ) Chiang Mai and Lamphun provinces, Thailand, during 2011–2013.

five *Salmonella* strains, initially identified as appropriate serotypes, were tested. Eight confirmed *Salmonella* serotypes, *Salmonella* group I. 4,5,12:i:-, *Salmonella* Agona, *Salmonella* Lexington, *Salmonella* Panama, *Salmonella* Rissen, *Salmonella* Stanley, *Salmonella* Typhimurium, and *Salmonella* Weltevreden were included in the study. These strains were recovered from pig farms ( $n = 73$ ) and pig slaughterhouses ( $n = 102$ ) Chiang Mai and Lamphun provinces, Thailand, during 2011–2013. The number of strains of each serotype is shown in Table 1.

*Identification of class 1 integrons by polymerase chain reaction (PCR):* A total of 175 *Salmonella* DNA samples were extracted by boiling in a suspension of 5% Chelex<sup>®</sup> 100 (Bio-Rad Laboratories, California) following the manufacturer's recommended protocol<sup>5)</sup>. All *Salmonella* DNA samples were screened for class 1 integrons by PCR using the Class 1 integrons primers (F: GGC ATC CAA GCA GCA AG and R: AAG CAG ACT TGA CCT GA). PCR amplification was done using a final volume of 20  $\mu$ L containing 10X PCR buffer, 1.5 mM MgCl<sub>2</sub>, 300  $\mu$ M dNTP, 0.2  $\mu$ M each of the forward and reverse primers, 1  $\mu$ l of purified DNA and 0.5 U of *Taq* DNA Polymerase (Vivantis<sup>®</sup> Vivantis Technologies Sdn Bhd,

Malaysia). Cycling conditions consisted of a 5 min hold at 95°C, followed by 35 cycles of 95°C for 1 min, 55°C for 1 min and 72°C for 1 min, and a final extension at 72°C for 7 min. Products were separated by 1% agarose gel electrophoresis and visualized with ethidium bromide staining. The expected product size was variable, depending on the insertion of antimicrobial resistant gene cassettes<sup>23)</sup>.

*Sequencing of Class 1 integrons and their cassette genes:* PCR products were submitted to an on-line DNA sequencing service (1<sup>st</sup> Base, Selangor, Malaysia) to purify and detect gene cassettes following the Sanger method using class 1 integrons forward and reverse primer, adding dideoxynucleotides (ddNTPs: ddATP, ddCTP, ddGTP, ddTTP) into the reaction. Sequencing of the amplicons was continued until the resistance genes were inserted by automated DNA sequencer. As a final step, sequences attained were BLAST analyzed via <http://www.ncbi.nih.gov> and compared with those registered in GenBank<sup>44)</sup>.

Similarly, the results of the cassette gene arrays were compared with an antimicrobial resistance phenotype. All resistance phenotype profiles were acquired from data provided by the

National Science and Technology Development Agency (NSTDA) Project ID: P-10-10409 and P-11-00729<sup>6</sup>). Ten different antimicrobial agents were interpreted by agar disk diffusion testing, including ampicillin (AMP) 10 µg, amoxicillin-clavulanic acid (AUG) 30 µg, sulfamethoxazole-trimethoprim (SXT) 23.75/1.25 µg, ciprofloxacin (CIP) 5 µg, chloramphenicol (C) 30 µg, streptomycin (S) 30 µg, nalidixic acid (NA) 30 µg, norfloxacin (NOR) 10 µg, cefotaxime (CTX) 30 µg and tetracycline (TE) 30 µg. The quality control organism, *Escherichia coli* ATCC 25922, was used to ensure that all antimicrobial agents were appropriately quality controlled<sup>9</sup>).

**MLST genotyping:** Representatives of 30 *Salmonella* strains, including *Salmonella* group I. 4,5,12:i:-, *Salmonella* Panama, *Salmonella* Rissen, *Salmonella* Stanley, *Salmonella* Typhimurium, and *Salmonella* Weltevreden, were randomly selected for further MLST analysis. To explore the genetic diversity by MLST, seven housekeeping genes were chosen for MLST profiling: *aroC* (chorismate synthase), *dnaN* (DNA polymerase III beta subunit), *hemD* (uroporphyrinogen III cosynthase), *purE* (phosphoribosylaminoimidazole carboxylase), *sucA* (alpha ketoglutarate dehydrogenase), *hisD* (histidinol dehydrogenase) and *thrA* (aspartokinase I/homoserine dehydrogenase). Amplification protocols detailed in the database, including primer sequences and annealing temperatures, were followed in this study as specified in the MLST database website (<http://mlst.warwick.ac.uk/mlst/>). PCR amplification of seven housekeeping genes was done with a final volume of 20 µL containing 10X PCR buffer, 1.5 mM MgCl<sub>2</sub>, 200 µM dNTP, 0.2 µM each of the forward and reverse primers, 1 µl of purified DNA and 1.25 U of *Taq* DNA Polymerase (Thermo Scientific<sup>®</sup> Thermo Fisher Scientific Inc.). PCR cycling conditions were a 2 min hold at 95°C, followed by 30 cycles of 95°C for 30 sec, 55°C for 30 sec, and 72°C for 1 min/kb, and a final extension at 72°C for 7 min. Products were separated by 1%

agarose gel electrophoresis and visualized with ethidium bromide staining. The PCR products were purified using GF-1 AmbiClean Kit Gel & PCR (Vivantis<sup>®</sup> Vivantis Technologies Sdn Bhd, Malaysia) and were sequenced using a housekeeping gene primer recommended by the MLST database website (<http://mlst.warwick.ac.uk/mlst/>).

The sequences were submitted to the MLST database website (<http://mlst.warwick.ac.uk/mlst/>) and assigned allele numbers and sequence type numbers defined by the database. A phylogenetic tree was created using Bionumerics 7.1 software (Applied Maths, Belgium).

**Genetic diversity comparison among MLST and PFGE:** Some of the *Salmonella* strains in this study were submitted sequence type for sequence type to compare the genetic diversity with existing pulsotype characteristic information about those strains from a previous study<sup>37</sup>) which had been obtained using pulse field gel electrophoresis. Simpson's index of diversity in MLST and in PFGE was calculated to determine the ability to differentiate between related and non-related organisms. Discriminatory power was measured using an online tool for quantitative assessment of classification agreement available at <http://darwin.phylviz.net/ComparingPartitions/>. In addition, the adjusted Rand coefficient and the Wallace coefficient were analyzed to determine the concordance of the two typing techniques and the relative ability of the two techniques to predict directional information<sup>15</sup>). Both concordance coefficients were calculated using the online tool mentioned above.

## Results

### *Prevalence of class 1 integrons and associated gene cassettes*

The overall prevalence of class 1 integrons-carrying *Salmonella* in tested samples was 13.71% (24/175). The prevalence in farm strains

and slaughterhouse strains were 9.58% (7/73) and 16.67% (17/102), respectively. Only 4 serotypes carried class 1 integron genes: *Salmonella* Rissen, Typhimurium, Stanley and Agona. The *dfrA12* gene was the most prevalent gene cassette detected in class 1 integrons-carrying *Salmonella* in this study (75.00%; 18/24), followed by *aadA1* gene (62.50%; 15/24). This finding was related to the gene cassette array pattern “*dfrA12-orfF-aadA2*” which was the most frequency found (62.50%; 15/24). Most of the integron-carrying *Salmonella* strains were resistant to at least two antimicrobial agents with the exception of “strain 26” which was susceptible to all antimicrobials. Regarding the concordance of resistant phenotypes and their concomitant gene cassettes, associations between sulfamethoxazole-trimethoprim and the *dfrA12* gene as well as between streptomycin and the *addA1* and *addA2* genes were observed in many strains. However, most antimicrobial resistance phenotypes were not associated with related gene cassettes harbored by *Salmonella* (Table 2.).

#### *MLST genotyping*

Multilocus sequence typing (MLST) generated profiles using the Unweighted Pair Group Method with Arithmetic Mean (UPGMA). Thirty *Salmonella* strains were grouped into six sequence types: ST 469, 48, 1500, 34, 19 and 29. Most of the strains with similar sequence types belonged to the same serotype with the exception of ST 34, which was comprised of *S.* I,4,5,12:i:- and *S.* Typhimurium. In general, ST 469 was the predominant grouped in this study, involved with 10 *Salmonella* strains, followed by ST 34 (7 strains), and ST 48 (5 strains). The origins of 30 strains were verified. Common sequence type *Salmonella* strains with several phenotypic expressions were recovered from various sources (Fig. 1.).

#### *Comparison of molecular typing methods between MLST and PFGE*

Twenty *Salmonella* strains submitted in

sequence type in this study were selected for comparison of genetic diversity with existing PFGE characteristic information from the study by Tadee *et al.*, (2015)<sup>37</sup>. Thirteen pulsotypes could be grouped into five sequence type profiles. Most of the strains with similar pulsotypes belonged to type ST with the exception of the “D9” pulsotype which was comprised of ST 19 and ST 34 (both classified as *S.* Typhimurium) (Table 4.). Comparison of the discriminatory power and concordance index of both techniques was carried out. The Simpson’s Diversity Index values of MLST and PFGE were 0.753 and 0.932, respectively. In addition, the Adjusted Rand coefficient was 0.253. The Wallace coefficient of PFGE to MLST was 0.769 and the Wallace coefficient of MLST to PFGE was 0.213 (Table 3.).

#### **Discussion**

The overall prevalence of class 1 integron-carrying *Salmonella* in swine production chains in Chiang Mai and Lamphun provinces of Thailand was found to be 14%. However, our study revealed a noticeably lower prevalence than the 46% prevalence of class 1 integron-carrying *Salmonella* isolated from pork and human in Chiang Mai Province in 2011<sup>41</sup>. The difference might be due to sample types, time period and location of sampling. The isolates from humans can be exposed to numerous types of antimicrobial agents. However, some antimicrobial agents are limited use in livestock. The occurrence of resistance gene expansion in organisms resulting from several selective pressures has been reported<sup>10,39</sup>. Greater differences in prevalence have also been detected by studies conducted in other regions of the world. A prevalence of 53.1% was isolated from slaughtered animals and animal-origin food in Ethiopia<sup>20</sup>, and 39.1% was reported in Egypt, isolated from meat and dairy products<sup>1</sup>. The reason for the variance might be due to differences in sample type as well as the season and temperature at the time the samples



**Table 2. Characteristics of class 1 integrons-carrying *Salmonella* isolated from swine production chains in Chiang Mai and Lamphun provinces, Thailand**

Strain	Serotype	Location	Antimicrobial susceptibility testing pattern										Gene cassette pattern	Class 1 integrons product size (bp <sup>d</sup> )	
			AMP <sup>f</sup>	AUG <sup>g</sup>	C <sup>h</sup>	CIP <sup>i</sup>	CTX <sup>j</sup>	NA <sup>k</sup>	NOR <sup>l</sup>	S <sup>m</sup>	TE <sup>n</sup>	SXT <sup>o</sup>			
542003	Rissen	Farm	■											<i>dfrA12<sup>a</sup>-orfF<sup>b</sup>-aadA2<sup>c</sup></i>	2000
542012	Rissen	Farm	■											<i>dfrA12-orfF-aadA2</i>	2000
542075	Typhimurium	Farm	■											<i>aadA1</i>	1000
542076	Typhimurium	Farm	■											<i>aadA1</i>	1000
542077	Typhimurium	Farm	■											<i>aadA1</i>	1000
543036	Rissen	Farm	■											<i>dfrA12-orfF-aadA2</i>	2000
543046	Stanley	Farm	■											<i>dfrA1-orfC</i>	1500
26	Stanley	SLH <sup>e</sup>												<i>dfrA12-orfF-aadA2</i>	2000
37	Rissen	SLH	■											<i>dfrA12-orfF-aadA2</i>	2000
65	Rissen	SLH	■											<i>dfrA12-orfF-aadA2</i>	2000
69	Rissen	SLH	■											<i>dfrA12-orfF-aadA2</i>	2000
81	Panama	SLH	■		■									<i>dfrA12-orfF-aadA2</i>	2000
107	Rissen	SLH	■											<i>dfrA12-orfF-aadA2</i>	2000
114	Rissen	SLH	■		■									<i>dfrA12-orfF-aadA2</i>	2000
126	Rissen	SLH	■											<i>dfrA12-orfF-aadA2</i>	1200
134	Rissen	SLH	■		■									<i>dfrA12-orfF-aadA2</i>	2000
139	Rissen	SLH	■											<i>dfrA12-orfF-aadA2</i>	2000
143	Agona	SLH	■	■	■		■	■						<i>aadA1</i>	1200
148	Stanley	SLH	■											<i>aadA1</i>	1200
151	Rissen	SLH	■											<i>aadA1</i>	2000
154	Rissen	SLH												<i>dfrA12-orfF-aadA2</i>	2000
181	Rissen	SLH												<i>dfrA12-orfF-aadA2</i>	2000
182	Rissen	SLH												<i>dfrA12-orfF</i>	2000
190	Rissen	SLH	■											<i>dfrA12-orfF</i>	2000

<sup>a</sup>*dfrA12* (dihydrofolate reductase) confers resistance to sulfamethoxazole-trimethoprim

<sup>b</sup>*orfF*, *orfC* (hypothetical protein) unknown function

<sup>c</sup>*aadA1*, *aadA2* (aminoglycosid -3'- adenylyltransferase) confer resistance to aminoglycoside (streptomycin, spectinomycin)

<sup>d</sup>bp (base pair)

<sup>e</sup>SLH Slaughterhouse

<sup>f</sup>AMP (ampicillin) 10 µg

<sup>g</sup>AUG (amoxicillin-clavulanic acid) 30 µg

<sup>h</sup>C (chloramphenicol) 30 µg

<sup>i</sup>CIP (ciprofloxacin) 5 µg

<sup>j</sup>CTX (cefotaxime) 30 µg

<sup>k</sup>NA (nalidixic acid) 30 µg

<sup>l</sup>NOR (norfloxacin) 10 µg

<sup>m</sup>S (streptomycin) 30 µg

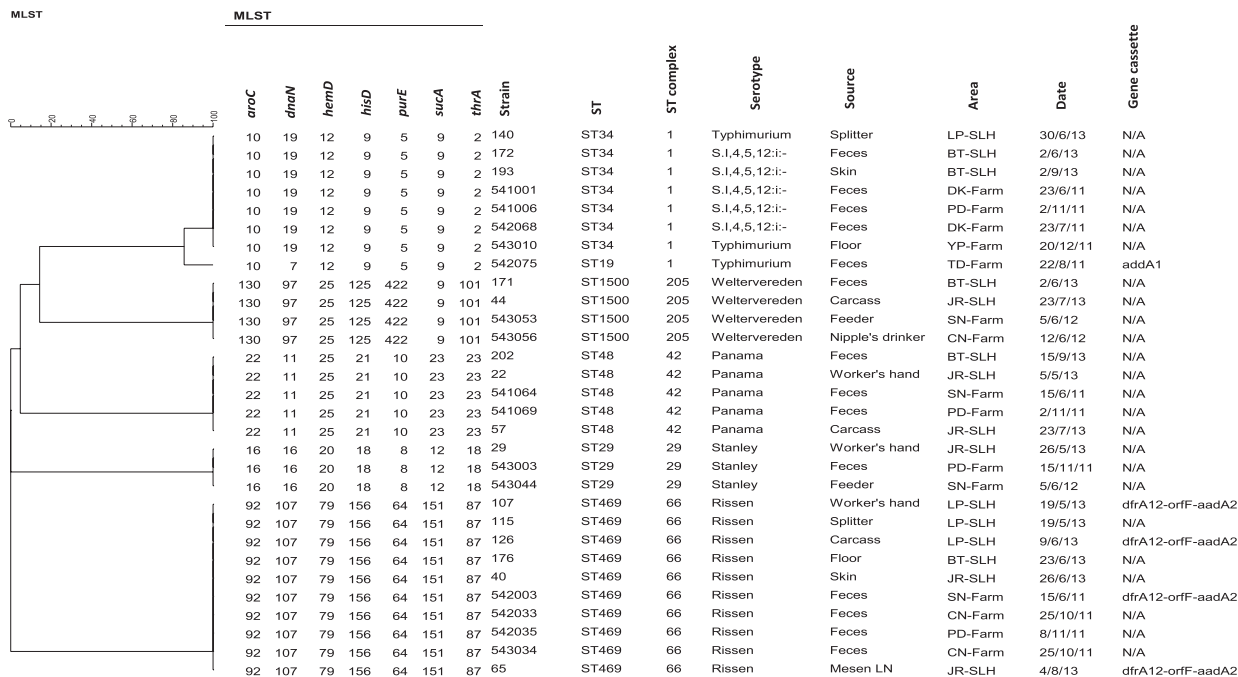
<sup>n</sup>TE (tetracycline) 30 µg

<sup>o</sup>SXT (sulfamethoxazole-trimethoprim) 25 µg

were collected. Animal products provide a suitable matrix for these organisms. Sub-lethal stress in storage conditions could also play a role

in increasing resistance ability<sup>19,32</sup>.

The gene cassette array pattern “*dfrA12-orfF-aadA2*” was the most frequently found in



**Fig. 1. Dendrogram representing 6 sequence types (ST) from 6 major *Salmonella* serotypes isolated from swine production chains in ChiangMai and Lamphun provinces, Thailand.** MLST generated profiles using the UPGMA. Thirty *Salmonella* strains were grouped into six sequence types.: ST 469, 48, 1500, 34, 19 and 29. Strains belonging to similar sequence type (strains sharing common sequence types) were obtained from various sample types.

our study. Most were observed in *S. Rissen*, similar to the study by Caleja et al. (2011)<sup>7</sup>. *dfrA12-orfF-aadA2* gene cassette arrays were also detected in the highest frequency in *Salmonella Rissen*. However, many *Salmonella* serotypes have been found in class 1 integrons, including monophasic Typhimurium<sup>12)</sup>, Heidelberg<sup>23)</sup>, Typhimurium, Enteritidis, Derby, Saintpaul, Bredeney, Brandenburg, Muenchen, Brikama, IIIb:65:lv:enz15<sup>3)</sup>, Emek, Haifa, Mbandaka, Newport, Ohio and Virchow<sup>28)</sup>.

Most of the antimicrobial resistant phenotypes and gene cassettes in our study were not related. Some resistant strains were not carried associated gene cassettes. That situation could be related to the genes harboring other mobile genetic elements which might take place such as transposons or plasmids<sup>35)</sup>. Additionally, *Salmonella* can develop the ability to neutralize an antibiotic by point mutations<sup>33)</sup>. On the other hand, some strains harbored resistant gene cassettes which did not show resistance ability in

their phenotypes. A possible cause could be the occurrence of an off function in the gene cassettes due to environmental interaction<sup>2)</sup>.

Six sequence types were generated from 30 *Salmonella* strains belonging to six serotypes. Almost all the sequence types were correlated with one serotype. However, ST 34 and ST 19 did not match well because *S. I,4,5,12:i:-* and *S. Typhimurium* were grouped in ST 34, while, only one strain of *S. Typhimurium* belonged in ST 19. About these both ST types, their allele number is different only in *dnaN* gene. Predictably, high genetic relatedness was found. Considering in antigenic formula of *S. Typhimurium* using the Kauffman-White classification showed that this serotype belongs in 4,5,12:i:1,2<sup>24)</sup>. This is close to the antigenic formula of *S. I,4,5,12:i:-* but that existent in second phase of flagella antigens are existed. The explanation is that both serotypes originated from a common ancestor; therefore, the genetic commonality found is not surprising<sup>34)</sup>.

Strains belonging to similar sequence type



**Table 3. Simpson's diversity and coefficient indexes comparing MLST and PFGE methods**

Typing method	Simpson's index of diversity (95% CI)	Adjusted Rand coefficient (95% CI)		Wallace coefficient (95% CI)	
		MLST	PFGE	MLST	PFGE
MLST	0.735 (0.646-0.859)	1.000 (1.000-1.000)	0.253 (0.013-0.524)	1.000 <sup>a</sup> (1.000-1.000)	0.213 (0.010-0.416)
PFGE	0.932 (0.868-0.995)		1.000 (1.000-1.000)	0.769 <sup>b</sup> (0.524-1.000)	1.000 (1.000-1.000)

<sup>a</sup>Wallace coefficient of MLST to PFGE<sup>b</sup>Wallace coefficient of PFGE to MLST**Table 4. Comparison of molecular typing methods between MLST and PFGE from 20 *Salmonella* strains isolated from the swine production chains in Chiang Mai and Lamphun provinces, Thailand.**

Strain	Sequence type	PFGE pattern
40	469	F1
65	469	F1
542035	469	F3
542003	469	F5
107	469	F5
115	469	F5
126	469	F5
542033	469	F9
44	1500	G1
543056	1500	G2
172	34	D1
193	34	D3
542068	34	D9
543010	34	D9
140	34	D9
541006	34	D10
542075	19	D9
543044	29	A2
543003	29	A3
29	29	B1

Twenty *Salmonella* strains submitted in sequence type in this study were selected for comparison of genetic diversity with existing PFGE characteristic information from the study by Tadee *et al.*, (2015)<sup>36</sup>. Thirteen pulsotypes could be grouped into five sequence type profiles. Most of the strains with similar pulsotypes belonged to type ST with the exception of the "D9" pulsotype which was comprised of ST 19 and ST 34 (both classified as *S. Typhimurium*)

(strains sharing common sequence types) were obtained from various sample types, indicating the occurrence of infection cycle through pigs, workers and the farm environment, as well as

the present of carcasses contaminated with pig feces via dirty equipment from improper practices in slaughterhouses (from the strains sharing in common sequence types) were carried

out. In addition, strains belonging to similar sequence types were obtained at different production levels (e.g., farm or slaughterhouse) signifying that the farm-slaughterhouse contamination route is the fact of *Salmonella* dissemination pattern in this region (in “542003”-“107 or 126” route). Furthermore, spread of resistant genes between production levels was demonstrated, as well.

The Simpson's index of diversity of MLST and PFGE were 0.753 and 0.932, respectively, indicating the high discriminatory power of these two techniques. However, PFGE had a higher differentiation ability than MLST for *Salmonella* strains, comparable to the results in several other studies<sup>14,39</sup>. The concordance between MLST and PFGE was examined by calculating the Adjusted Rand and Wallace coefficients. The Adjusted Rand coefficient was 0.253, which indicated a low congruence between MLST and PFGE (From 6 sequence types, thirteen pulsotype were generated. Disarranged outcome was found in the grouping of ST 34 and ST 19 with *S. Typhimurium* and *S. I. 4,5,12:i:-*). Moreover, the Wallace coefficient of PFGE to MLST was 0.769, which indicates that if the isolates were recognized as having the same PFGE type, those isolates had a 76.9% chance of being identified as the same sequence type. On the other hand, the Wallace coefficient of MLST to PFGE was 0.213, indicating that if the isolates were identified as having the same sequence type, those isolates had only a 21.3% chance of being identified as the same PFGE type<sup>25</sup>). These findings indicate that the capability of typing PFGE was greater than MLST. However, PFGE can be difficult to compare across various laboratories for the same analysis<sup>21</sup>. Alternatively, the MLST database is available online worldwide, so that technique can provide faster results for disease monitoring and investigation of global epidemiology than the PFGE technique<sup>18</sup>.

## Conclusions

Antimicrobial resistant genes can have an important impact on public health efforts. Contamination and spread of resistant organisms originating at the beginning of the swine production chain was demonstrated using the MLST technique. The use of antimicrobials in livestock should be controlled by the best route in right dose at optimum intervals for the appropriate period by veterinarian. Education and training on food handling and food consumption are also important ways to help prevent foodborne illnesses.

## Acknowledgements

This research was supported by the University- Industry Research Collaboration (NUI-RC), National Science and Technology Development Agency, Thailand (NSTDA) (Project ID: P-10-10409 and P-11-00729). We would like to thank Dr. Wichitra Anukool and lab technicians for providing PCR information as well as to the veterinary students for helping with DNA extraction. In addition, we would like to thank Ms. Pornpan Ruttanasutja, Ph.D., for helping with the PCR amplification of some *Salmonella* house keeping genes. We would like to thank Dr. Chongchit S. Robert and G. Lamar Robert for their excellent manuscript proofreading and editing. Finally, we would like to thank the WHO National *Salmonella* and *Shigella* Center Laboratory (NSSC), Thailand, and our colleagues at Chiang Mai University for their significant contributions.

## References

- 1) Ahmed, A. M., Shimamoto, T. and Shimamoto, T. 2014. Characterization of integrons and resistance genes in multidrug-resistant *Salmonella enterica* isolated from meat and

- dairy products in Egypt. *Int. J. Food Microbiol.*, **189**: 39–44.
- 2) Alberts, B., Johnson, A., Lewis, J., Raff, M., Roberts, K. and Walter, P. 2008. *Molecular Biology of the Cell*, 5<sup>th</sup> ed., pp. 433–434, Garland Science, New York.
  - 3) Antunes, P., Machado, J. and Peixe, L. 2006. Characterization of antimicrobial resistance and class 1 and 2 integrons in *Salmonella enterica* isolates from different sources in Portugal. *J. Antimicrob. Chemother.*, **58**: 297–304.
  - 4) Berends, B. R., Van Knapen, F., Snijders, J. M. and Mossel, D. A. 1997. Identification and quantification of risk factors regarding *Salmonella* spp. on pork carcasses. *Int. J. Food Microbiol.*, **36**: 199–206.
  - 5) Bio-Rad Laboratories. 2000. *Chelex® 100 and Chelex 20 Chelating Ion Exchange Resin Instruction Manual*. CA 94547.
  - 6) Boonkhot, P., Tadee, P. and Patchanee, P. 2015. Serodiversity and Antimicrobial Resistance Profiles of Detected *Salmonella* on Swine Production Chain in Chiang Mai and Lamphun, Thailand. *Acta Sci Vet.*, In press.
  - 7) Caleja, C., de Toro, M., Gonçalves, A., Themudo, P., Vieira-Pinto, M., Monteiro, D., Rodrigues, J., Sáenz, Y., Carvalho, C., Igrejas, G., Torres, C. and Poeta, P. 2011. Antimicrobial resistance and class I integrons in *Salmonella enterica* isolates from wild boars and Bísaro pigs. *Int. Microbiol. Off. J. Span. Soc. Microbiol.*, **14**: 19–24.
  - 8) Campioni, F., Moratto Bergamini, A. M. and Falcão, J. P. 2012. Genetic diversity, virulence genes and antimicrobial resistance of *Salmonella* Enteritidis isolated from food and humans over a 24-year period in Brazil. *Food Microbiol.*, **32**: 254–264.
  - 9) Clinical and Laboratory Standards Institute (CLSI). 2011. Performance standards for antimicrobial disc susceptibility test; Approved standard-Tenth Edition. CLSI document M02-A10. Wayne, PA: Clinical and Laboratory Standards Institute.
  - 10) Cohen, M. L. 1992. Epidemiology of Drug Resistance: Implications for a Post—Antimicrobial Era. *Science.*, **257**: 1050–1055.
  - 11) Gonzales-Barron, U. A., Redmond, G. and Butler, F. 2012. A risk characterization model of *Salmonella* Typhimurium in Irish fresh pork sausages. *Food Res. Int.*, **45**: 1184–1193.
  - 12) Guerra, B., Soto, S. M., Argüelles, J. M. and Mendoza, M. C. 2001. Multidrug Resistance Is Mediated by Large Plasmids Carrying a Class 1 integron in the Emergent *Salmonella enterica* Serotype [4,5,12:i:-]. *Antimicrob. Agents Chemother.*, **45**: 1305–1308.
  - 13) Hall, R. M. and Collis, C. M. 1998. Antibiotic resistance in gram-negative bacteria: the role of gene cassettes and integrons. *Drug Resist. Updat.*, **1**: 109–119.
  - 14) Harbottle, H., White, D. G., McDermott, P. F., Walker, R. D. and Zhao, S. 2006. Comparison of Multilocus Sequence Typing, Pulsed-Field Gel Electrophoresis, and Antimicrobial Susceptibility Typing for Characterization of *Salmonella enterica* Serotype Newport Isolates. *J. Clin. Microbiol.*, **44**: 2449–2457.
  - 15) Hata, E., Katsuda, K., Kobayashi, H., Uchida, I., Tanaka, K. and Eguchi, M. 2010. Genetic Variation among *Staphylococcus aureus* Strains from Bovine Milk and Their Relevance to Methicillin-Resistant Isolates from Humans. *J. Clin. Microbiol.*, **48**: 2130–2139.
  - 16) Jawetz, E., Melnick, J. L. and Adelberg, E. A. 1954. *Review of medical microbiology*, 16th ed, pp.244–248, Lange Medical Publication, Los Altos.
  - 17) Kelly, B. G., Vespermann, A. and Bolton, D. J. 2009. The role of horizontal gene transfer in the evolution of selected foodborne bacterial pathogens. *Food Chem. Toxicol.*, **47**, 951–968.
  - 18) Liu, W., Liu, B., Zhu, X., Yu, S. and Shi, X. 2011. Diversity of *Salmonella* isolates using serotyping and multilocus sequence typing. *Food Microbiol.*, **28**: 1182–1189.
  - 19) Mc Mahon, M. A. S., Blair, I. S., Moore, J. E., and Mc Dowell, D. A. 2007. The rate of horizontal transmission of antibiotic resistance plasmids is increased in food preservation-stressed bacteria. *J. Appl. Microbiol.*, **103**: 1883–1888.
  - 20) Molla, B., Miko, A., Pries, K., Hildebrandt, G., Kleer, J., Schroeter, A. and Helmuth, R. 2007. Class 1 integrons and resistance gene cassettes among multidrug resistant *Salmonella* serovars isolated from slaughter animals and foods of animal origin in Ethiopia. *Acta Trop.*, **103**: 142–149.
  - 21) Nemoy, L. L., Kotetishvili, M., Tigno, J., Keefer-Norris, A., Harris, A. D., Perencevich, E. N., Johnson, J. A., Torpey, D., Sulakvelidze, A., Morris, J. G. and Stine, O. C. 2005. Multilocus Sequence Typing versus Pulsed-Field Gel Electrophoresis for Characterization of Extended-Spectrum Beta-Lactamase-Producing *Escherichia coli* Isolates. *J. Clin.*

- Microbiol.*, **43**: 1776–1781.
- 22) Nield, B. S. 2001. Recovery of new integron classes from environmental DNA. *FEMS Microbiol. Lett.*, **195**: 59–65.
  - 23) Patchanee, P., Zewde, B. M., Tadesse, D. A., Hoet, A. and Gebreyes, W. A. 2008. Characterization of multidrug-resistant *Salmonella enterica* serovar Heidelberg isolated from humans and animals. *Foodborne Pathog. Dis.*, **5**: 839–851.
  - 24) Patrick A. D. 2007. *Antigenic formular of the Salmonella serovar*, 9<sup>th</sup> ed, pp. 111–154, WHO collaborating center for reference and research on *Salmonella*. Institut Pasteur Paris France.
  - 25) Phasipol, P., Chokesajjawatee, N. and Luangtongkum, T. 2013. Comparison of Repetitive Sequence-based Polymerase Chain Reaction (rep-PCR) and Pulsed-Field Gel Electrophoresis (PFGE) for Genetic Characterization of *Arcobacter* spp. *Thai J. Vet. Med.*, **43**: 307–311.
  - 26) Prendergast, D. M., Duggan, S. J., Gonzales-Barron, U., Fanning, S., Butler, F., Cormican, M. and Duffy, G. 2009. Prevalence, numbers and characteristics of *Salmonella* spp. on Irish retail pork. *Int. J. Food Microbiol.*, **131**: 233–239.
  - 27) Pui, C. F., Wong, W. C., Chai, L. C., Tunung, R., Jeyaletchumi, P., Noor Hidayah, M. S., Ubong, A., Farinazleen, M. G., Cheah, Y. K. and Son, R. 2011. *Salmonella*: a foodborne pathogen. *Int. Food Res. J.*, **18**: 465–473.
  - 28) Randall, L. P., Cooles, S. W., Osborn, M. K., Piddock, L. J. V. and Woodward, M. J. 2004. Antibiotic resistance genes, integrons and multiple antibiotic resistance in thirty-five serotypes of *Salmonella enterica* isolated from humans and animals in the UK. *J. Antimicrob. Chemother.*, **53**: 208–216.
  - 29) Rostagno, M. H. and Callaway, T. R. 2012. Pre-harvest risk factors for *Salmonella enterica* in pork production. *Food Res. Int.*, **45**: 634–640.
  - 30) Sabat, A. J., Budimir, A., Nashev, D., Sá-Leão, R., van Dijl, J. M., Laurent, F., Grundmann, H. and Friedrich, A. W. 2013. Overview of molecular typing methods for outbreak detection and epidemiological surveillance. *Euro. Surveill. Bull. Eur. Sur Mal. Transm. Eur. Commun. Dis. Bull.*, **18**: 20380.
  - 31) Sandvang, D., Aarestrup, F. M. and Jensen, L. B. 1998. Characterisation of integrons and antibiotic resistance genes in Danish multiresistant *Salmonella enterica* Typhimurium DT104. *FEMS Microbiol. Lett.*, **160**: 37–41.
  - 32) Sharma, R., Sharma, C. and Kapoor, B. 2005. Antibacterial resistance: Current problems and possible solutions. *Indian J. Med. Sci.*, **59**: 120–129.
  - 33) Schwaiger, K., Huther, S., Hölzel, C., Kämpf, P. and Bauer, J. 2012. Prevalence of antibiotic-resistant enterobacteriaceae isolated from chicken and pork meat purchased at the slaughterhouse and at retail in Bavaria, Germany. *Int. J. Food Microbiol.*, **154**: 206–211.
  - 34) Soyer, Y., Moreno Switt, A., Davis, M. A., Maurer, J., McDonough, P. L., Schoonmaker-Bopp, D. J., Dumas, N. B., Root, T., Warnick, L. D., Gröhn, Y. T. and Wiedmann, M. 2009. *Salmonella enterica* Serotype 4,5,12:i:-, an Emerging *Salmonella* Serotype That Represents Multiple Distinct Clones. *J. Clin. Microbiol.*, **47**, 3546–3556.
  - 35) Stokes, H. W. and Gillings, M. R. 2011. Gene flow, mobile genetic elements and the recruitment of antibiotic resistance genes into Gram-negative pathogens. *FEMS Microbiol. Rev.*, **35**: 790–819.
  - 36) Tadee, P., Boonkhot, P. and Patchanee, P. 2014. Quantification of contamination levels and particular risk of *Salmonella* spp. in pigs in slaughterhouses in Chiang Mai and Lamphun provinces, Thailand. *Jpn. J. Vet. Res.*, **62**: 171–179.
  - 37) Tadee, P., Boonkhot, P. and Patchanee, P. 2015. Comparative Phenotypic and Genotypic Characterization of *Salmonella* spp. in Pig Farms and Slaughterhouses in Two Provinces in Northern Thailand. *PLOS One.*, **10**: 1–11
  - 38) Tenover, F. C. 2006. Mechanisms of Antimicrobial Resistance in Bacteria. *Am. J. Med.*, **119**: 3–10.
  - 39) Torpdahl, M., Skov, M. N., Sandvang, D. and Baggesen, D. L. 2005. Genotypic characterization of *Salmonella* by multilocus sequence typing, pulsed-field gel electrophoresis and amplified fragment length polymorphism. *J. Microbiol. Methods.*, **63**: 173–184.
  - 40) Van Boxstael, S., Dierick, K., Van Huffel, X., Uyttendaele, M., Berkvens, D., Herman, L., Bertrand, S., Wildemauwe, C., Catry, B., Butaye, P. and Imberechts, H. 2012. Comparison of antimicrobial resistance patterns and phage types of *Salmonella* Typhimurium isolated from pigs, pork and humans in Belgium between 2001 and 2006. *Food Res. Int.*, **45**: 913–918.
  - 41) Van Hoek, A. H. A. M., de Jonge, R., van Overbeek, W. M., Bouw, E., Pielaat, A., Smid, J. H., Malorny, B., Junker, E., Löfström, C.,

- Pedersen, K., Aarts, H. J. M. and Heres, L. 2012. A quantitative approach towards a better understanding of the dynamics of *Salmonella* spp. in a pork slaughter-line. *Int. J. Food Microbiol.*, **153**: 45-52.
- 42) Wannaprasat, W., Padungtod, P. and Chuanchuen, R. 2011. Class 1 integrons and virulence genes in *Salmonella enterica* isolates from pork and humans. *Int. J. Antimicrob. Agents*, **37**: 457-461.
- 43) Werner, G., Coque, T. M., Franz, C. M. A. P., Grohmann, E., Hegstad, K., Jensen, L., van Schaik, W. and Weaver, K. 2013. Antibiotic resistant enterococci—Tales of a drug resistance gene trafficker. *Int. J. Med. Microbiol.*, **303**: 360-379.
- 44) Willford, J., Manley, W., Rebelein, T. and Goodridge, L. D. 2007. Pulsed field, ribotype and integron analysis of multidrug resistant isolates of *Salmonella enterica* serovar Newport. *Food Res. Int.*, **40**: 975-981.
- 45) Zali, M. R., Alebouyeh, M. and Tajbakhsh, M. 2011. Emergence of resistant *Salmonella* spp.; new challenges, new trends. *Gastroenterol. Hepatol. Bed Bench.*, **4**: 99-101.