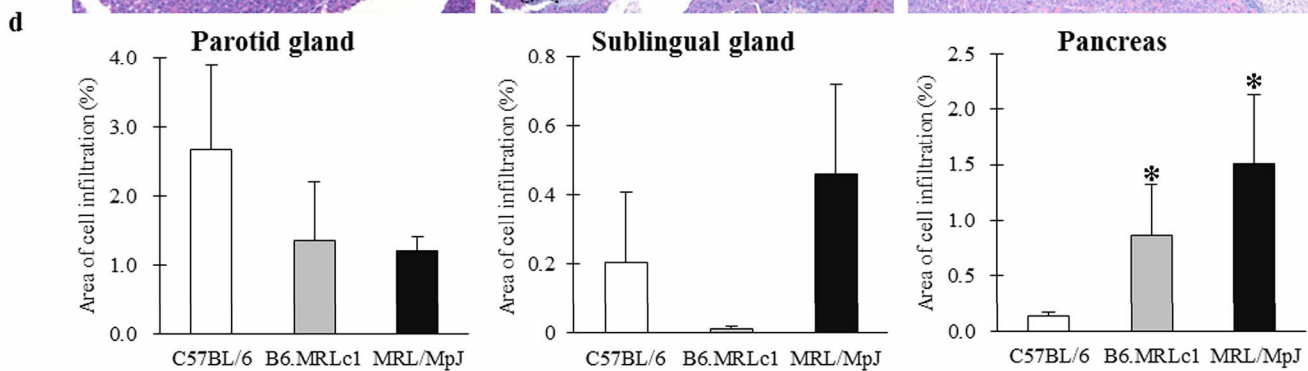
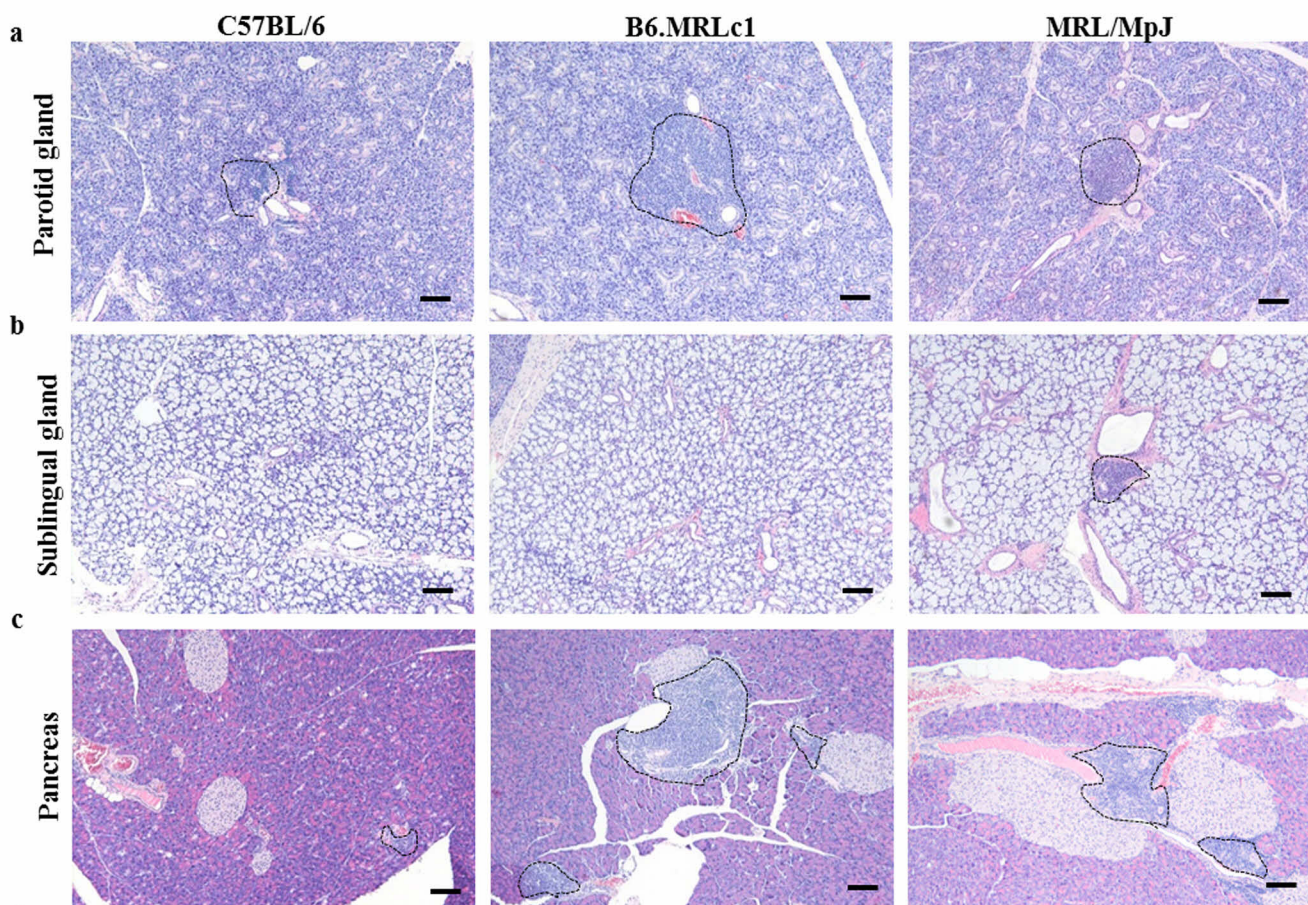


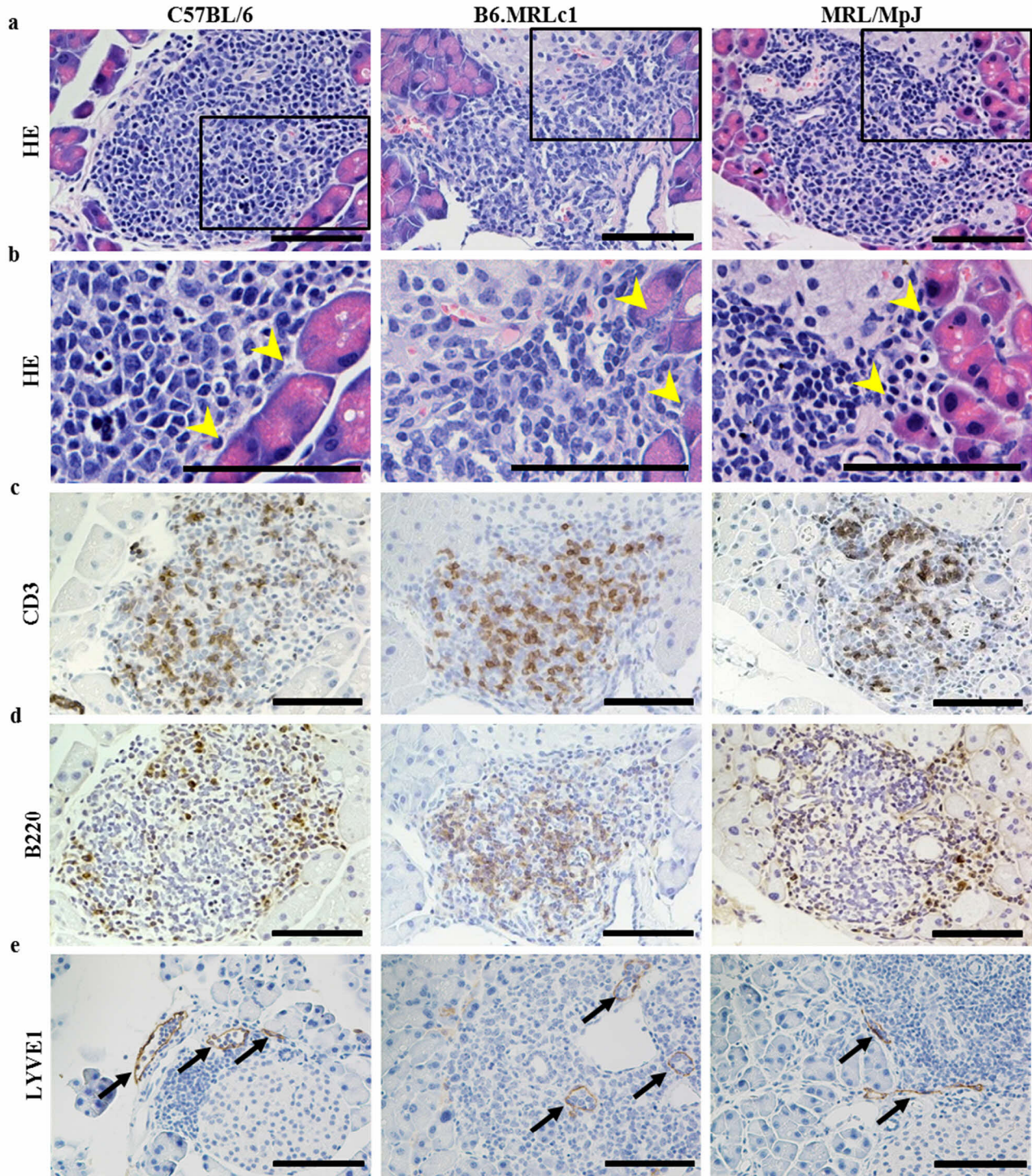


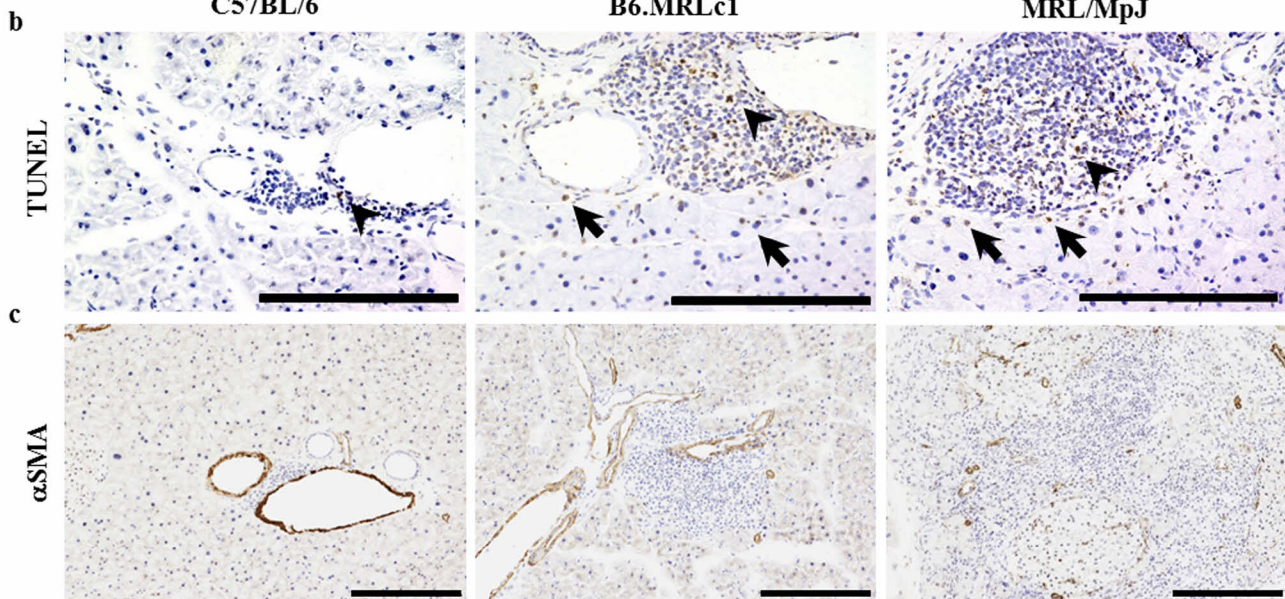
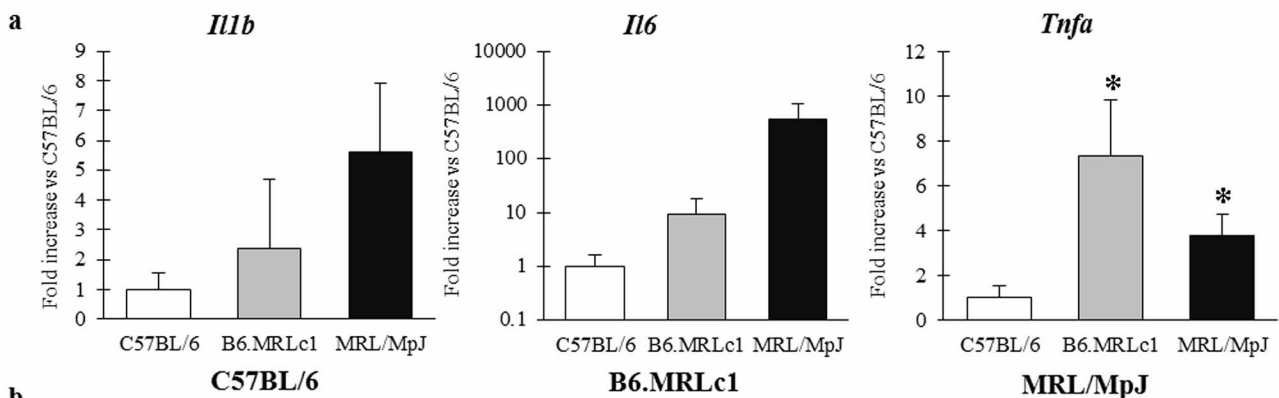
Title	Pathogenetic role of an autoimmune susceptibility locus derived from MRL/MpJ strain chromosome 1 in chronic pancreas inflammation
Author(s)	Okada, Yuki; Nakamura, Teppei; Ichii, Osamu; Otsuka, Saori; Kon, Yasuhiro
Citation	Lupus, 23(11), 1112-1123 <a href="https://doi.org/10.1177/0961203314536249">https://doi.org/10.1177/0961203314536249</a>
Issue Date	2014-10
Doc URL	<a href="http://hdl.handle.net/2115/57291">http://hdl.handle.net/2115/57291</a>
Rights	The final, definitive version of this paper has been published in Lupus, 23(11), Oct. 2014 by SAGE Publications Ltd, All rights reserved. © 2014 SAGE Publications
Type	article (author version)
Additional Information	There are other files related to this item in HUSCAP. Check the above URL.
File Information	Figure 1-4.pdf



[Instructions for use](#)

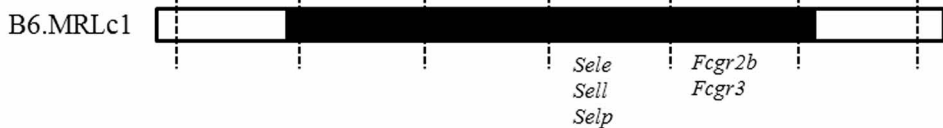




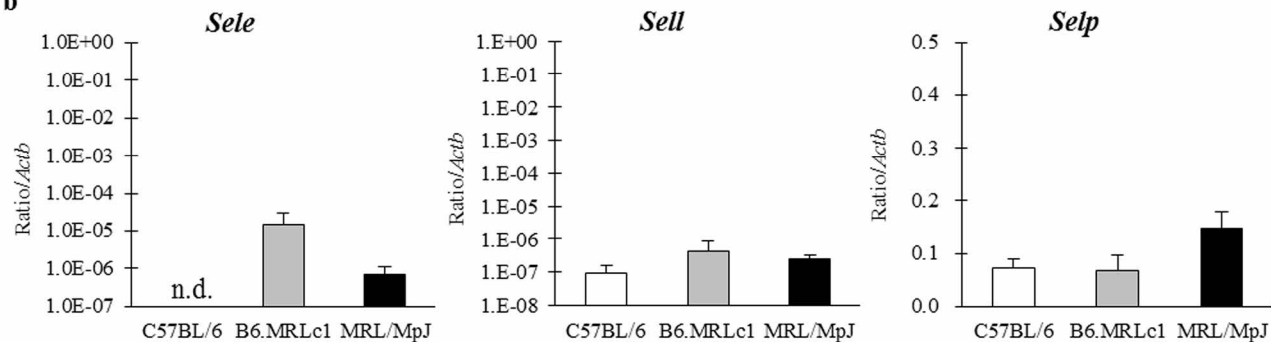


**a**

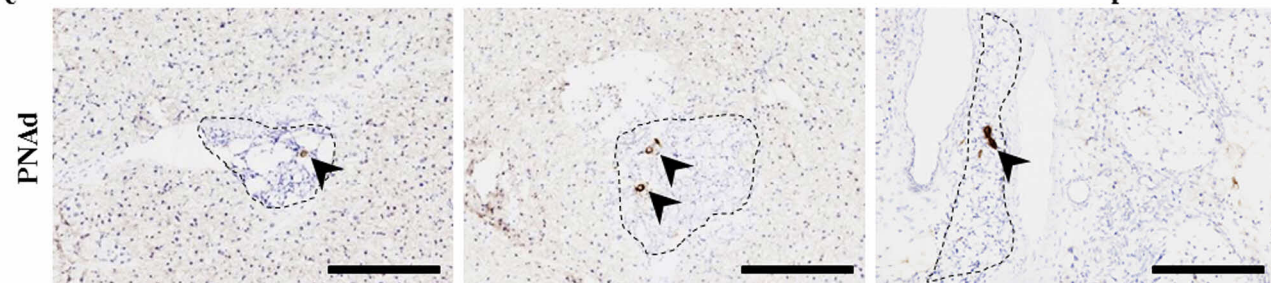
<i>D1Mit</i>	<i>D1Mit191</i>	<i>D1Mit202</i>	<i>D1Mit107</i>	<i>D1Mit143</i>	<i>D1Mit15</i>	<i>D1Mit403</i>	<i>D1Mit361</i>
(position)	(52.66cM)	(67.97cM)	(70.19cM)	(70.79cM)	(76.25cM)	(81.63cM)	(89.95cM)



**b**



**c**



**d**

