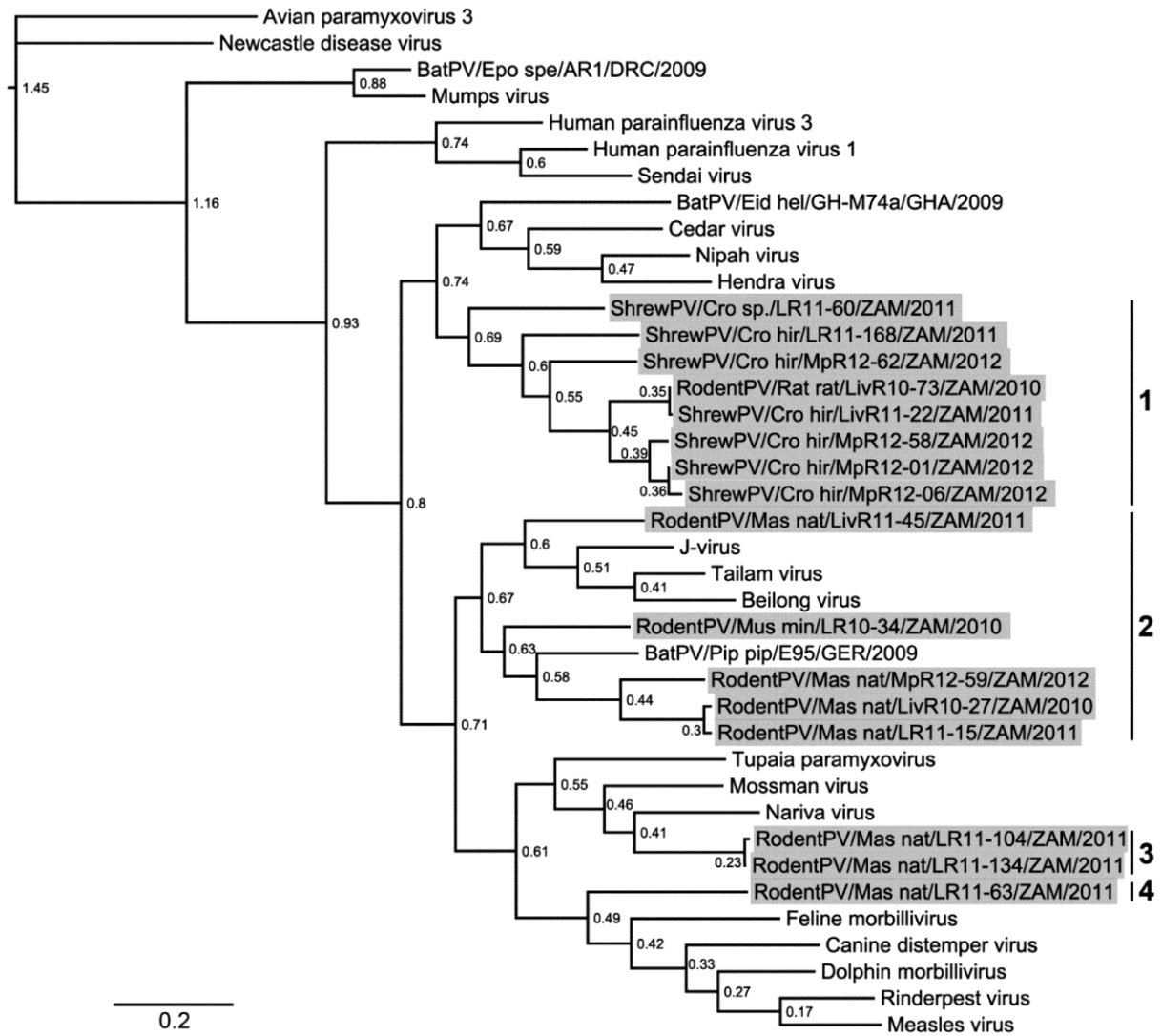




|                        |  |
|------------------------|--|
| Title                  | Molecular epidemiology of paramyxoviruses in Zambian wild rodents and shrews   |
| Author(s)              | Sasaki, Michihito; Muleya, Walter; Ishii, Akihiro; Orba, Yasuko; Hang'ombe, Bernard M.; Mweene, Aaron S.; Moonga, Ladslav; Thomas, Yuka; Kimura, Takashi; Sawa, Hirofumi |
| Citation               | Journal of General Virology, 95(2), 325-330<br><a href="https://doi.org/10.1099/vir.0.058404-0">https://doi.org/10.1099/vir.0.058404-0</a>                               |
| Issue Date             | 2014-02  |
| Doc URL                | <a href="http://hdl.handle.net/2115/57901">http://hdl.handle.net/2115/57901</a>  |
| Type                   | article (author version)   |
| Additional Information | There are other files related to this item in HUSCAP. Check the above URL.   |
| File Information       | Fig S1 Table S1.pdf  |



[Instructions for use](#)



**Figure S1.** Bayesian phylogenetic analysis of a portion of the *L* gene in paramyxoviruses sequence. Larger *L* gene fragments (1586–1793 bp) were detected in rodent and shrew specimens. Phylogenetic analyses were performed using the Bayesian method and the GTR substitution model. The phylogenetic tree was visualized with FigTree v1.4. Paramyxoviruses detected in this study are indicated by shading (grey). Genotype 1, 2, 3, and 4 represent Henipavirus-, Tailam virus-, Mossman virus- and Morbillivirus-related paramyxoviruses, respectively. Bayesian posterior probabilities are indicated at each tree root. The scale bar represents a distance of 0.2 substitutions per site.

**Supplementary Table S1.** Viruses used in our phylogenetic analysis.

| Genus                | Name                           | Accession Number |
|----------------------|--------------------------------|------------------|
| <i>Rubulavirus</i>   | Mumps virus                    | NC_005339        |
| <i>Avulavirus</i>    | Newcastle disease virus        | NC_002617        |
|                      | Avian paramyxovirus 3          | EU403085         |
| <i>Respirovirus</i>  | Human parainfluenza virus 3    | NC_001796        |
|                      | Human parainfluenza virus 1    | NC_003461        |
|                      | Sendai virus                   | NC_001552        |
| <i>Morbillivirus</i> | Canine distemper virus         | NC_001921        |
|                      | Dolphin morbillivirus          | NC_005283        |
|                      | Feline morbillivirus           | JQ411014         |
|                      | Rinderpest virus               | NC_006296        |
|                      | Measles virus                  | NC_001498        |
| <i>Henipavirus</i>   | Cedar virus                    | JQ001776         |
|                      | Hendra virus                   | NC_001906        |
|                      | Nipah virus                    | NC_002728        |
| Unclassified         | J-virus                        | AY900001         |
|                      | Tailam virus                   | JN689227         |
|                      | Beilong virus                  | NC_007803        |
|                      | Tupaia paramyxovirus           | AF079780         |
|                      | Nariva virus                   | NC_017937        |
|                      | Mossman virus                  | NC_005339        |
|                      | BatPV/Eid hel/GH-M74a/GHA/2009 | HQ660129         |
|                      | BatPV/Epo spe/AR1/DRC/2009     | HQ660095         |
|                      | BatPV/Myo mys/E20/GER/2009     | JN086950         |
|                      | BatPV/Pip pip/E95/GER/2009     | JN086951         |
|                      | BatPV/Nyc noc/E155/GER/2009    | JN086952         |
|                      | BatPV/Pte vmp/IFBPV01/IDN/2010 | AB691542         |
|                      | BatPV/Pte sp./IFBPV32/IDN/2011 | AB691544         |
|                      | BatPV/Pte sp./IFBPV46/IDN/2011 | AB691546         |
|                      | BatPV/Eid hel/U5B/GHA/2010     | JN648075         |
|                      | BatPV/Eid hel/U5D/GHA/2010     | JN648076         |

|                                     |          |
|-------------------------------------|----------|
| BatPV/Eid hel/U6A/GHA/2010          | JN648085 |
| BatPV/Eid hel/U6B/GHA/2010          | JN648086 |
| BatPV/Eid hel/U9D/GHA/2010          | JN648089 |
| BatPV/Eid hel/U46B/GHA/2010         | JN648061 |
| BatPV/Eid hel/U47F/GHA/2010         | JN648064 |
| BatPV/Eid hel/U53A/GHA/2010         | JN648070 |
| BatPV/Eid hel/U67J/GHA/2010         | JN648079 |
| BatPV/Eid hel/U67N/GHA/2010         | JN648080 |
| BatPV/Eid hel/U68E/GHA/2010         | JN648081 |
| BatPV/Eid hel/U68G/GHA/2010         | JN648082 |
| RodentPV/Aco sub/LR10-62/ZAM/2010   | AB844333 |
| RodentPV/Aco sub/LR11-113/ZAM/2011  | AB844334 |
| RodentPV/Aet chr/LR10-73/ZAM/2010   | AB844335 |
| RodentPV/Aet chr/LR11-99/ZAM/2011   | AB844336 |
| RodentPV/Aet chr/MpR12-53/ZAM/2012  | AB844338 |
| RodentPV/Arv sp./LR11-142/ZAM/2011  | AB844339 |
| ShrewPV/Cro hir/LivR11-01/ZAM/2011  | AB844340 |
| ShrewPV/Cro hir/LivR11-22/ZAM/2011  | AB844341 |
| ShrewPV/Cro hir/LR11-51/ZAM/2011    | AB844342 |
| ShrewPV/Cro hir/LR11-168/ZAM/2011   | AB844343 |
| ShrewPV/Cro hir/MpR12-01/ZAM/2012   | AB844344 |
| ShrewPV/Cro hir/MpR12-06/ZAM/2012   | AB844345 |
| ShrewPV/Cro hir/MpR12-12/ZAM/2012   | AB844346 |
| ShrewPV/Cro hir/MpR12-58/ZAM/2012   | AB844347 |
| ShrewPV/Cro hir/MpR12-62/ZAM/2012   | AB844348 |
| ShrewPV/Cro sp./LR11-60/ZAM/2011    | AB844349 |
| ShrewPV/Cro sp./LR11-110/ZAM/2011   | AB844350 |
| ShrewPV/Cro sp./LR11-126/ZAM/2011   | AB844351 |
| RodentPV/Ger leu/LR11-80/ZAM/2011   | AB844352 |
| RodentPV/Gra sp./LR11-23/ZAM/2011   | AB844353 |
| RodentPV/Hyl sp./LR11-171/ZAM/2011  | AB844354 |
| RodentPV/Mas nat/KasR11-03/ZAM/2011 | AB844355 |

|                                     |          |
|-------------------------------------|----------|
| RodentPV/Mas nat/LivR10-19/ZAM/2010 | AB844356 |
| RodentPV/Mas nat/LivR10-20/ZAM/2010 | AB844357 |
| RodentPV/Mas nat/LivR10-27/ZAM/2010 | AB844358 |
| RodentPV/Mas nat/LivR10-32/ZAM/2010 | AB844359 |
| RodentPV/Mas nat/LivR10-34/ZAM/2010 | AB844360 |
| RodentPV/Mas nat/LivR10-62/ZAM/2010 | AB844361 |
| RodentPV/Mas nat/LivR10-63/ZAM/2010 | AB844362 |
| RodentPV/Mas nat/LivR11-15/ZAM/2011 | AB844363 |
| RodentPV/Mas nat/LivR11-17/ZAM/2011 | AB844364 |
| RodentPV/Mas nat/LivR11-30/ZAM/2011 | AB844365 |
| RodentPV/Mas nat/LivR11-36/ZAM/2011 | AB844366 |
| RodentPV/Mas nat/LivR11-45/ZAM/2011 | AB844367 |
| RodentPV/Mas nat/LivR11-46/ZAM/2011 | AB844368 |
| RodentPV/Mas nat/LivR11-48/ZAM/2011 | AB844369 |
| RodentPV/Mas nat/LR10-01/ZAM/2010   | AB844370 |
| RodentPV/Mas nat/LR10-40/ZAM/2010   | AB844371 |
| RodentPV/Mas nat/LR10-44/ZAM/2010   | AB844372 |
| RodentPV/Mas nat/LR10-48/ZAM/2010   | AB844373 |
| RodentPV/Mas nat/LR10-51/ZAM/2010   | AB844374 |
| RodentPV/Mas nat/LR10-80/ZAM/2010   | AB844375 |
| RodentPV/Mas nat/LR11-15/ZAM/2011   | AB844376 |
| RodentPV/Mas nat/LR11-30/ZAM/2011   | AB844377 |
| RodentPV/Mas nat/LR11-42/ZAM/2011   | AB844378 |
| RodentPV/Mas nat/LR11-48/ZAM/2011   | AB844379 |
| RodentPV/Mas nat/LR11-49/ZAM/2011   | AB844380 |
| RodentPV/Mas nat/LR11-59/ZAM/2011   | AB844381 |
| RodentPV/Mas nat/LR11-63/ZAM/2011   | AB844382 |
| RodentPV/Mas nat/LR11-66/ZAM/2011   | AB844383 |
| RodentPV/Mas nat/LR11-67/ZAM/2011   | AB844384 |
| RodentPV/Mas nat/LR11-68/ZAM/2011   | AB844385 |
| RodentPV/Mas nat/LR11-73/ZAM/2011   | AB844386 |
| RodentPV/Mas nat/LR11-76/ZAM/2011   | AB844387 |

|                                    |          |
|------------------------------------|----------|
| RodentPV/Mas nat/LR11-77/ZAM/2011  | AB844388 |
| RodentPV/Mas nat/LR11-81/ZAM/2011  | AB844389 |
| RodentPV/Mas nat/LR11-85/ZAM/2011  | AB844390 |
| RodentPV/Mas nat/LR11-87/ZAM/2011  | AB844391 |
| RodentPV/Mas nat/LR11-88/ZAM/2011  | AB844392 |
| RodentPV/Mas nat/LR11-90/ZAM/2011  | AB844393 |
| RodentPV/Mas nat/LR11-91/ZAM/2011  | AB844394 |
| RodentPV/Mas nat/LR11-92/ZAM/2011  | AB844395 |
| RodentPV/Mas nat/LR11-93/ZAM/2011  | AB844396 |
| RodentPV/Mas nat/LR11-94/ZAM/2011  | AB844397 |
| RodentPV/Mas nat/LR11-97/ZAM/2011  | AB844398 |
| RodentPV/Mas nat/LR11-100/ZAM/2011 | AB844399 |
| RodentPV/Mas nat/LR11-101/ZAM/2011 | AB844400 |
| RodentPV/Mas nat/LR11-104/ZAM/2011 | AB844401 |
| RodentPV/Mas nat/LR11-105/ZAM/2011 | AB844402 |
| RodentPV/Mas nat/LR11-132/ZAM/2011 | AB844403 |
| RodentPV/Mas nat/LR11-134/ZAM/2011 | AB844404 |
| RodentPV/Mas nat/LR11-135/ZAM/2011 | AB844405 |
| RodentPV/Mas nat/LR11-136/ZAM/2011 | AB844406 |
| RodentPV/Mas nat/LR11-138/ZAM/2011 | AB844407 |
| RodentPV/Mas nat/LR11-139/ZAM/2011 | AB844408 |
| RodentPV/Mas nat/LR11-140/ZAM/2011 | AB844409 |
| RodentPV/Mas nat/LR11-146/ZAM/2011 | AB844410 |
| RodentPV/Mas nat/LR11-148/ZAM/2011 | AB844411 |
| RodentPV/Mas nat/LR11-149/ZAM/2011 | AB844412 |
| RodentPV/Mas nat/LR11-152/ZAM/2011 | AB844413 |
| RodentPV/Mas nat/LR11-154/ZAM/2011 | AB844414 |
| RodentPV/Mas nat/LR11-157/ZAM/2011 | AB844415 |
| RodentPV/Mas nat/LR11-172/ZAM/2011 | AB844416 |
| RodentPV/Mas nat/MpR12-07/ZAM/2012 | AB844417 |
| RodentPV/Mas nat/MpR12-10/ZAM/2012 | AB844418 |
| RodentPV/Mas nat/MpR12-19/ZAM/2012 | AB844419 |

|                                     |          |
|-------------------------------------|----------|
| RodentPV/Mas nat/MpR12-48/ZAM/2012  | AB844420 |
| RodentPV/Mas nat/MpR12-51/ZAM/2012  | AB844421 |
| RodentPV/Mas nat/MpR12-59/ZAM/2012  | AB844422 |
| RodentPV/Mas nat/MpR12-67/ZAM/2012  | AB844423 |
| RodentPV/Mus min/LR10-34/ZAM/2010   | AB844424 |
| RodentPV/Mus min/LR11-22/ZAM/2011   | AB844425 |
| RodentPV/Rat rat/LivR10-73/ZAM/2010 | AB844426 |
| RodentPV/Rat rat/LivR10-74/ZAM/2010 | AB844427 |
| RodentPV/Ste sp./MpR12-52/ZAM/2012  | AB844428 |
| RodentPV/Sac sp./MpR12-55/ZAM/2012  | AB844429 |