



Title	Suppression of clubroot disease under neutral pH caused by inhibition of spore germination of <i>Plasmodiophora brassicae</i> in the rhizosphere
Author(s)	Niwa, Reiko; Nomura, Yoshinobu; Osaki, Mitsuru; Ezawa, Tatsuhiro
Citation	Plant Pathology, 57(3), 445-452 <a href="https://doi.org/10.1111/j.1365-3059.2007.01817.x">https://doi.org/10.1111/j.1365-3059.2007.01817.x</a>
Issue Date	2008-06
Doc URL	<a href="http://hdl.handle.net/2115/38186">http://hdl.handle.net/2115/38186</a>
Rights	The definitive version is available at <a href="http://www.blackwell-synergy.com">www.blackwell-synergy.com</a>
Type	article (author version)
File Information	PPniwa_etal.pdf



[Instructions for use](#)



**Suppression of clubroot disease under neutral pH is caused by inhibition of the spore germination of *Plasmodiophora brassicae* in rhizosphere**

Journal:	<i>Plant Pathology</i>
Manuscript ID:	PP-07-118.R1
Manuscript Type:	Original Article
Date Submitted by the Author:	10-Sep-2007
Complete List of Authors:	Niwa, Rieko; Hokkaido University, Graduate School of Agriculture Nomura, Yoshinobu; Nagoya University, Graduate School of Bioagricultural Science Osaki, Mitsuru; Hokkaido University, Graduate School of Agriculture Ezawa, Tatsuhiro; Hokkaido University, Graduate School of Agriculture
Keyword:	Clubroot disease, Nuclear-cell wall double staining, Plasmodiophora brassicae, Rhizosphere, Soil pH, Spore germination



Running title: *Inhibition of Plasmodiophora brassicae spore germination*

Suppression of clubroot disease under neutral pH caused by inhibition of spore germination of *Plasmodiophora brassicae* in the rhizosphere

R. Niwa<sup>a\*</sup>, Y. Nomura<sup>b</sup>, M. Osaki<sup>a</sup> and T. Ezawa<sup>a</sup>

<sup>a</sup>Graduate School of Agriculture, Hokkaido University, Sapporo, 060-8589; and

<sup>b</sup>Graduate School of Bioagricultural Science, Nagoya University, Togo-cho, Aichi, 470-0151, Japan

\*E-mail: niwar@chem.agr.hokudai.ac.jp

Accepted 9 October 2007

To elucidate the mechanism of clubroot suppression under neutral soil pH, a highly reproducible germination assay system under soil culture conditions was designed based on the hypothesis that germinated spores of *Plasmodiophora brassicae* could be identified by the absence of a nucleus (i.e. having released a zoospore to infect a root hair of the host plant). *Brassica rapa* var. *perviridis* seedlings were inoculated with a spore suspension of *P. brassicae* at a rate of  $2.0 \times 10^6$  spores  $g^{-1}$  soil and grown in a

1  
2  
3  
4  
5  
6  
7 growth chamber for 7 days. The spores were recovered from rhizosphere and  
8  
9  
10 non-rhizosphere soils and stained with both Fluorescent Brightener 28  
11  
12 (cell-wall-specific) and SYTO 82 orange fluorescent nucleic-acid stain (nucleus-specific  
13  
14 stain). Total numbers of spores were counted under UV-excitation, and spores with a  
15  
16 nucleus that fluoresced orange under G-excitation were counted. The significant  
17  
18 increase in the percentage of spores without a nucleus (germinated spores) in the  
19  
20 rhizosphere after 7 days' cultivation and the correlation with root-hair infections  
21  
22 validated the assay system. Applications of calcium-rich compost or calcium carbonate  
23  
24 to neutralize the soil significantly reduced the percentage of germinated spores in the  
25  
26 rhizosphere, as well as the number of root-hair infections. The present study provides  
27  
28 direct evidence that the inhibition of spore germination is the primary cause of disease  
29  
30 suppression under neutral soil pH.  
31  
32  
33  
34  
35  
36  
37  
38  
39  
40  
41  
42  
43  
44  
45  
46  
47  
48  
49  
50  
51  
52  
53  
54  
55

56  
57  
58  
59 *Keywords: Brassica rapa, nuclear/cell-wall double staining, rhizosphere, soil pH,*  
60  
soilborne disease, spore germination

## Introduction

Clubroot of cruciferous plants caused by the plasmodiophoromycete *Plasmodiophora*

1  
2  
3  
4  
5  
6  
7 *brassicae*, is a major disease that is widespread throughout the world. The life cycle of *P.*  
8  
9  
10 *brassicae* consists of two phases: the primary phase is characterized by germination of  
11  
12 resting spores and subsequent infection of root hairs, and the secondary phase is  
13  
14 characterized by the colonization and proliferation of the pathogen in the root cortex  
15  
16 (Ingram & Tommerup, 1972). It is difficult to control the disease because the pathogen  
17  
18 survives in soil for a long time as resting spores (Wallenhammar, 1996). Liming has  
19  
20 been employed as a traditional and conventional technique to control the disease, and  
21  
22 the disease-suppressive effects of the neutralization of soil acidity are well documented  
23  
24 (Colhoun, 1953; Dobson *et al.*, 1983; Campbell *et al.*, 1985; Murakami *et al.*, 2002;  
25  
26 Tremblay *et al.*, 2005). Attempts to differentiate the effects of calcium from those of pH  
27  
28 have been carried out. Webster & Dixon (1991) employed the sand-solution culture  
29  
30 system to investigate the effects of pH on primary (root-hair) infection and clubroot  
31  
32 development in the absence and presence of calcium. They observed independent and  
33  
34 synergistic effects of pH and calcium on the suppression of zoospore invasion,  
35  
36 zoosporangial maturation and clubroot development. Disease-suppressive soils were  
37  
38 found in the field where large amounts of calcium-rich organic matter, either farmyard  
39  
40 manure or food factory sludge compost, had been incorporated for more than 15 years  
41  
42 (Niwa *et al.*, 2007). In these soils, it was demonstrated that an increase in soil pH as a  
43  
44  
45  
46  
47  
48  
49  
50  
51  
52  
53  
54  
55  
56  
57  
58  
59  
60

1  
2  
3  
4  
5  
6  
7 result of the accumulation of calcium was the primary cause of the suppression of  
8  
9  
10 root-hair infection and that the effect of calcium was additive, and limited under neutral  
11  
12 conditions. Although the suppression mechanism of soil neutralization and that of  
13  
14 calcium enrichment need to be elucidated comparatively, all these observations confirm  
15  
16 that the occurrence of clubroot disease is suppressed effectively under neutral soil pH in  
17  
18 the presence of calcium, leading to the hypothesis that either spore germination or  
19  
20 root-hair infection, each a part of the primary phase of the life cycle of the pathogen, is  
21  
22 inhibited under such conditions.  
23  
24  
25  
26  
27  
28  
29  
30

31 To test this hypothesis requires a reliable assay system to examine germination of  
32  
33 resting spores under soil culture conditions. Naiki *et al.* (1987) demonstrated that  
34  
35 germinated spores, i.e. those that had released a zoospore, could be distinguished from  
36  
37 ungerminated spores using Nomarski differential interference contrast microscopy. This  
38  
39 technique was applied to a resting-spore/Ri-T-DNA-transformed-root dual-culture  
40  
41 system that enabled the observation of germination and subsequent infection of the  
42  
43 roots on the same plate (Asano *et al.*, 2000). Application of this assay system, however,  
44  
45 is limited to *in vitro* cultures, because any contamination of soil particles or  
46  
47 microorganisms seriously interferes with evaluation. By contrast, Takahashi &  
48  
49 Yamaguchi (1989) recovered spores after incubation in soil and stained them with  
50  
51  
52  
53  
54  
55  
56  
57  
58  
59  
60

1  
2  
3  
4  
5  
6  
7 Fluorescent Brightener 28 (= calcofluor white, a cell-wall stain) and ethidium bromide  
8  
9  
10 (a cell-impermeable nucleic-acid stain), which showed blue and red fluorescence under  
11  
12 UV-excitation, respectively. They claimed that the ethidium-bromide-stained  
13  
14 (red-fluorescent) spores were inactive because the dye was impermeable to live cells.  
15  
16  
17  
18 Furthermore, Takahashi (1991) incubated spores in the presence and absence of host  
19  
20 plants and found a correlation between the numbers of ethidium-bromide-stained and  
21  
22 germinated spores using both fluorescent and Nomarski differential interference  
23  
24 contrast microscopy. Spores stained with ethidium bromide, however, might include not  
25  
26 only germinated spores, but also damaged spores incapable of germinating (Takahashi,  
27  
28 1991), so ethidium bromide might be unsuitable for the detection of germinated spores.  
29  
30  
31 By contrast, the detection of ungerminated spores retaining a zoospore (with a nucleus)  
32  
33 seemed more promising, and it was considered that a cell-permeable nucleic-acid stain  
34  
35 could be used for this purpose.  
36  
37  
38  
39  
40  
41  
42  
43  
44  
45  
46  
47  
48  
49  
50  
51  
52  
53  
54  
55  
56  
57  
58  
59  
60

The objective of this study was to clarify the mechanism of disease suppression at neutral soil pH in the assessment of spore germination. The reliability and reproducibility of the germination assay system were examined in conjunction with the soil-based plug-pot bioassay (Niwa *et al.*, 2007), with particular emphasis on the validity of nuclear staining for the germination assay. It was uncertain, however,

1  
2  
3  
4  
5  
6  
7 whether the assay system was sensitive enough to detect germination, because if spores  
8  
9  
10 germinated in response to root exudates (Macfarlane, 1970; Suzuki *et al.*, 1992), only a  
11  
12  
13 small proportion of spores in the vicinity of roots would germinate. To confirm this,  
14  
15  
16 spores were extracted both from rhizosphere and non-rhizosphere soils separately after  
17  
18  
19 culturing with host plants.  
20  
21  
22  
23  
24

## 25 Materials and methods

### 26 27 28 **Inoculum preparation**

29  
30  
31 Clubroots (galls) infected with *Plasmodiophora brassicae* formed on chinese cabbage  
32  
33  
34 (*Brassica rapa* var. *pekinensis* cvs Satokaze and Tomikaze) were obtained from the  
35  
36  
37 experimental field of Nagoya University Togo-cho, Aichi, Japan (Niwa *et al.*, 2007) and  
38  
39  
40 stored at -20°C. The frozen galls were thawed in water, washed thoroughly under  
41  
42  
43 running tap water, surface-sterilized with 70% (v/v) ethanol for 30 s, homogenized in  
44  
45  
46 sterilized water and filtered through eight layers of cheesecloth. The filtrate was  
47  
48  
49 centrifuged at 2580 *g* for 5 min. The pellet was washed four times with sterilized water  
50  
51  
52 and then resuspended in a known volume of sterilized water. A 100- $\mu$ L aliquot of the  
53  
54  
55 suspension was mixed with an equal volume of 200  $\mu$ g mL<sup>-1</sup> Fluorescent Brightener 28  
56  
57  
58 (Sigma-Aldrich) solution (Takahashi & Yamaguchi, 1987). Numbers of resting spores  
59  
60



1  
2  
3  
4  
5  
6  
7 were counted in a Thoma blood corpuscle chamber using fluorescence microscopy with  
8  
9  
10 UV-excitation at  $\times 200$  magnification (Olympus BX51).  
11  
12  
13  
14  
15

### 16 **Glass-bead solution culture and germination assay by nuclear staining**

17

18  
19 Fifty seeds of *B. rapa* var. *perviridis* cv. Komatsuna Rakuten were surface-sterilized  
20  
21 with 70% ethanol for 30 s and 10% sodium hypochlorite (available chlorine 5%) (w/v)  
22  
23 containing 0.01% (v/v) Tween 20 for 5 min, then rinsed in sterilized water. The seeds  
24  
25 were sown on 20 g of autoclaved glass beads (0.35-0.5 mm diam) moistened with 4 mL  
26  
27 of filter-sterilized 1 mL L<sup>-1</sup> 6-10-5 HYPONeX and 200  $\mu\text{g mL}^{-1}$  streptomycin (Wako  
28  
29 Pure Chemical) in a 6-cm Petri dish and incubated at 25°C in the dark. After 2 days, the  
30  
31 seedlings were inoculated with  $2 \times 10^6$  spores of *P. brassicae* suspended in 2 mL  
32  
33 sterilized water and further incubated under similar conditions for 5 days. The spores  
34  
35 were also incubated in the absence of host plants under the same conditions as the  
36  
37 control. The medium and seedlings in the Petri dish were transferred to a 200-mL  
38  
39 beaker by washing with 0.02% (v/v) Tween 20 and filtered through a 37- $\mu\text{m}$  nylon mesh  
40  
41 to separate the spores from the plants and glass beads. The volume of filtrate was  
42  
43 reduced after centrifugation, achieving a final spore density of 5000-10 000 spores  $\mu\text{L}^{-1}$ .  
44  
45  
46  
47  
48  
49  
50  
51  
52  
53  
54  
55  
56  
57  
58

59 A 100- $\mu\text{L}$  aliquot of the spore suspension was mixed with an equal volume of  
60

1  
2  
3  
4  
5  
6  
7  
8  
9  
10  
11  
12  
13  
14  
15  
16  
17  
18  
19  
20  
21  
22  
23  
24  
25  
26  
27  
28  
29  
30  
31  
32  
33  
34  
35  
36  
37  
38  
39  
40  
41  
42  
43  
44  
45  
46  
47  
48  
49  
50  
51  
52  
53  
54  
55  
56  
57  
58  
59  
60

2- $\mu\text{g mL}^{-1}$  4',6-diamidino-2-phenylindole-dihydrochloride (DAPI) (Sigma-Aldrich) in 0.1% (v/v) dimethylformamide, and 10  $\mu\text{L}$  of the mixture were transferred onto a glass slide and covered with an 18-  $\times$  18-mm cover glass. Total numbers of spores and the number of spores with a nucleus in the same field were counted in the bright field and under UV excitation, respectively, using the fluorescent microscope at  $\times 400$  magnification. Approximately 100 spores were examined from each specimen (from each Petri dish). Three Petri dishes were employed for each treatment ( $n = 3$ ). The experiment was conducted twice independently to confirm reproducibility.

### Soil culture system and germination assay by nuclear/cell-wall double staining

#### *Plug-pot soil culture system and sampling*

A disease-conducive soil was collected from the experimental field of Nagoya University (Niwa *et al.*, 2007), air-dried in a greenhouse for a few days, passed through a 5-mm sieve and stored at room temperature. The chemical properties of the soil were as follows: total C, 23.4  $\text{g kg}^{-1}$ ; total N, 2.5  $\text{g kg}^{-1}$ ; total P, 5.4  $\text{g kg}^{-1}$ ; exchangeable  $\text{Ca}^{2+}$ , 65.0  $\text{mEq kg}^{-1}$ . The soil was mixed with the *P. brassicae* spore suspension at  $2.0 \times 10^6$  spores  $\text{g}^{-1}$  soil and divided into two portions: one was stored at 4°C for 1 day as the no-plant control, and the other was incubated in the presence of host plants as follows.

1  
2  
3  
4  
5  
6  
7  
8  
9  
10  
11  
12  
13  
14  
15  
16  
17  
18  
19  
20  
21  
22  
23  
24  
25  
26  
27  
28  
29  
30  
31  
32  
33  
34  
35  
36  
37  
38  
39  
40  
41  
42  
43  
44  
45  
46  
47  
48  
49  
50  
51  
52  
53  
54  
55  
56  
57  
58  
59  
60

Nine seeds of *B. rapa* var. *perviridis* were sown on the soil in each 4.5-cm-square plug pots (70-mL volume) and the pots placed in the growth chamber (25°C, 16/8 h light/dark). The plants were irrigated via the drainage hole of the pot using a capillary sheet and were thinned to four plants per pot 4 days after sowing. Seven days after sowing, the roots were carefully excised from the medium and sonicated at 24 Hz for 30 s in 40 mL distilled water in a 50-mL glass beaker to separate the adhering *P. brassicae* spores and soil (0.5-1.0 g per plant, 2-4 g in total) from the roots. The roots were stained with 50 mg L<sup>-1</sup> aniline blue in 5 g L<sup>-1</sup> phenol solution for 24 h at room temperature, and the number of zoosporangial clusters of *P. brassicae* formed in root hairs of the top 2 cm of tap root was counted under a microscope at ×100 magnification. The spore/soil suspension was transferred to a 50-mL plastic tube and centrifuged at 1120 g for 20 min at room temperature. The resulting pellet was designated the 'rhizosphere soil', whereas the rest of the medium was designated the 'non-rhizosphere soil'.

#### *Spore extraction and germination assay*

To extract *P. brassicae* spores from the soils, the rhizosphere soil (2-4 g) or the non-rhizosphere soil (1 g) was suspended in 5 mL Percoll (GE Healthcare Bio-Sciences) in a 50-mL plastic tube, shaken by a Cute Mixer CM-1000 (EYELA) at 1500 r.p.m. for

1  
2  
3  
4  
5  
6  
7 30 min and centrifuged at 1970 *g* for 10 min. The supernatant was transferred to a  
8  
9  
10 50-mL centrifuge tube and the pellet resuspended in 5 mL Percoll and centrifuged again.  
11  
12  
13 The supernatant was mixed with 40 mL distilled water and centrifuged at 1970 *g* for 20  
14  
15  
16 min, and the resultant supernatant was discarded. The pellet was resuspended in distilled  
17  
18  
19 water, transferred to a 15-mL centrifuge tube, washed twice with distilled water after  
20  
21  
22 centrifugation at 640 *g* for 10 min and resuspended in a small amount of distilled water.  
23  
24  
25 The spore suspension was transferred to a 1.5-mL tube, and the supernatant discarded  
26  
27  
28 after centrifugation at 13 200 *g* for 4 min. The purified spores were fixed in 100  $\mu$ L of  
29  
30  
31 50% ethanol for 15 min at room temperature, centrifuged at 13 200 *g* for 4 min, washed  
32  
33  
34 twice with sterilized water and resuspended in 100  $\mu$ L sterilized water. A 24.75- $\mu$ L  
35  
36  
37 aliquot of the suspension was mixed with an equal volume of 200  $\mu$ g mL<sup>-1</sup> Fluorescent  
38  
39  
40 Brightener 28 (a cell-wall-specific stain) solution and 0.5  $\mu$ L of 5 mM SYTO 82 orange  
41  
42  
43 fluorescent nucleic-acid stain (a nucleus-specific stain; Molecular Probes) in  
44  
45  
46 dimethylsulfoxide and incubated at room temperature in the dark for 30 min. Ten  $\mu$ L of  
47  
48  
49 spore suspension were transferred onto a glass slide and covered with a cover glass. The  
50  
51  
52 total number of spores and the number of spores with a nucleus were counted under  
53  
54  
55 UV- (330-385 nm) and G-excitations (520-550 nm), respectively, in the same field  
56  
57  
58 using a fluorescent microscope at  $\times$ 400 magnification. Approximately 200 spores were  
59  
60

1  
2  
3  
4  
5  
6  
7 observed per specimen. Three pots were employed for each treatment ( $n = 3$ ), and the  
8  
9  
10 experiment was conducted twice independently to confirm reproducibility.

11  
12  
13 Prior to the germination assay in the soil culture system, the efficiency of the  
14  
15  
16 Percoll-based method at extracting spores from the soil was evaluated as follows. The  
17  
18  
19 spores prepared from the clubroots were stained (labelled) with Fluorescent Brightener  
20  
21  
22 28 as described for inoculum preparation, mixed with the soil at  $10^6$  spores  $g^{-1}$  soil then  
23  
24  
25 extracted from 1 g of soil ( $n = 3$ ). The number of labelled spores in the extract was  
26  
27  
28 counted under UV-excitation, and the percentage of recovered spores was determined as  
29  
30  
31  $92.6 \pm 5.8\%$ .

### 32 33 34 35 36 37 **Effect of calcium-rich organic matter and calcium carbonate on spore germination**

38  
39  
40 Food factory sludge compost (FSC) with a particle size  $<1$  mm was prepared as  
41  
42  
43 described in Niwa *et al.* (2007). The chemical properties of FSC were as follows: total  
44  
45  
46 C,  $325 g kg^{-1}$ ; total N,  $46.0 g kg^{-1}$ ; total P,  $54.1 g kg^{-1}$ ; total Ca,  $91.1 g kg^{-1}$ ; pH, 7.3. The  
47  
48  
49 FSC or calcium carbonate ( $CaCO_3$ ) was mixed with the disease-conducive soil at  
50  
51  
52  $25 g kg^{-1}$  soil (corresponding to  $3.3 t ha^{-1}$ ) or  $2.5 g kg^{-1}$  soil (corresponding to  $330 kg$   
53  
54  
55  $ha^{-1}$ ), and *P. brassicae* spore germination and root-hair infection were assessed  
56  
57  
58 according to the method above. The pH (soil:H<sub>2</sub>O, 1:2.5, w/v) of these media was  
59  
60

1  
2  
3  
4  
5  
6  
7 measured after harvest.  
8  
9

## 10 11 12 13 **Statistics** 14

15  
16 The STATVIEW software (SAS Institute Inc.) was used for all statistical analyses.  
17

18  
19 Analysis of variance (ANOVA) and Fisher's protected least significant difference test as a  
20  
21 *post hoc* test of ANOVA ( $P < 0.05$ ) were applied for analyses of the results obtained from  
22  
23 the spore germination assays.  
24  
25  
26  
27  
28  
29  
30

## 31 **Results** 32

### 33 34 **Spore-germination assays** 35

36  
37 Spore germination of *P. brassicae* was first assessed by nuclear staining with DAPI in  
38  
39 glass-beads solution culture. The absence or presence of a nucleus in a spore could be  
40  
41 discriminated under UV-excitation (Fig. 1). In the two independent experiments, the  
42  
43 mean percentage of *P. brassicae* spores without a nucleus were 46.3 and 59.2%,  
44  
45 respectively, before incubation, and increased significantly to 91.9 and 79.8%,  
46  
47 respectively, after incubation in the presence of host plants (Fig. 2). The percentages of  
48  
49 spores without a nucleus did not increase in the absence of host plants (49.1 and 55.1%,  
50  
51 respectively). However, no root-hair infection of *P. brassicae* was observed in these  
52  
53  
54  
55  
56  
57  
58  
59  
60

1  
2  
3  
4  
5  
6  
7 experiments. Based upon these results, it was considered that the incubation of spores in  
8  
9  
10 the presence of the host plant resulted in the loss of nuclei as a result of germination and  
11  
12 that the loss of nuclei could be a potential index of spore germination. However, the  
13  
14 nuclear-staining method with DAPI was not applicable to the soil culture system  
15  
16 because of the non-specific staining of soil particles and other microorganisms similar  
17  
18 to *P. brassicae* nuclei in size.  
19  
20  
21  
22  
23  
24

25 In combination with rhizosphere soil fractionation, nuclear/cell-wall double staining  
26  
27 enabled clear discrimination of spores with or without a nucleus (Fig. 3). In two  
28  
29 independent experiments, the mean percentage of spores without a nucleus were  
30  
31 significantly higher in the rhizosphere soil (41.4 and 46.1%) than in the non-rhizosphere  
32  
33 soil (25.1 and 26.2%), which gave similar values to the no-plant control (22.8 and  
34  
35 25.7%) (Fig. 4). Root-hair infection was successfully observed in these experiments,  
36  
37 and the numbers of root-hair infections were 386 and 94.7 per plant in the first and  
38  
39 second experiments, respectively.  
40  
41  
42  
43  
44  
45  
46  
47  
48  
49  
50  
51  
52

### 53 **Effect of calcium-rich organic matter and calcium carbonate on spore germination**

54

55  
56 The application of the FSC to disease-conducive soil increased the pH from 6.0 to 6.9  
57  
58 and the number of root-hair infections significantly decreased (Fig. 5a). In the absence  
59  
60

of FSC, the mean percentage of *P. brassicae* spores without a nucleus in the rhizosphere soil was 35.9%, significantly higher than that in the non-rhizosphere soil (14.2%). By contrast, the application of FSC reduced the mean percentage in the rhizosphere soil to 13.2%, similar to the value for the non-rhizosphere soil (10.5%). The application of CaCO<sub>3</sub> to disease-conducive soil gave similar results (Fig. 5b). Soil pH was increased from 6.2 to 7.1, and the number of root-hair infections decreased significantly. The application of CaCO<sub>3</sub> significantly reduced the percentage of *P. brassicae* spores without a nucleus in the rhizosphere soil to 15.8%, from 37.0% in controls.

## Discussion

This study provides the first direct evidence that the spore germination of *P. brassicae* in the rhizosphere is inhibited under neutral conditions created by the application of calcium-rich organic matter or CaCO<sub>3</sub>. Myers & Campbell (1985) demonstrated that neutralization by calcium application did not reduce the viability of the resting spores, suggesting that the effects were not fungicidal, but fungistatic to the pathogen. Webster & Dixon (1991) suggested that an increase in soil pH by calcium application might not eradicate the pathogen directly, but create unfavorable conditions affecting the infection processes, e.g. enhancing host resistance to infection. The present results clarify a part



1  
2  
3  
4  
5  
6  
7 of the mechanism underlying the inhibition of the disease under neutral soil pH and  
8  
9  
10 raise the new question of how spore germination is inhibited under these conditions. It  
11  
12  
13 has been suggested that root exudates stimulate spore germination (Macfarlane, 1970;  
14  
15  
16 Suzuki *et al.*, 1992). It is hypothesized that soil pH may influence the response of *P.*  
17  
18  
19 *brassicae* spores to root exudates or that qualitative and/or quantitative changes in the  
20  
21  
22 exudates may occur under neutral conditions. Identification of the  
23  
24  
25 germination-stimulating factors in exudates would be an important step in  
26  
27  
28 understanding this mechanism. It is noteworthy that stimulatory factors were released  
29  
30  
31 not only from cruciferous plants, but also from, for example, perennial ryegrass (Friberg  
32  
33  
34 *et al.*, 2005) and pearl millet (Niwa & Ezawa, unpublished results).

35  
36  
37 It was demonstrated that only spores in the rhizosphere were involved in infection.  
38  
39  
40 The rhizosphere is defined as the soil adjacent to roots, with different physical, chemical  
41  
42  
43 and biological properties than non-rhizosphere soil (Bowen & Rovira, 1999). Root  
44  
45  
46 activities, e.g. exudation of organic compounds and enzymes, respiration and detached  
47  
48  
49 root tissue, are the driving force for maintaining the environment and interactions  
50  
51  
52 between microorganisms (Hinsinger *et al.*, 2005). Rhizosphere soil is typically within  
53  
54  
55 1-3 mm of the root surface (Mengel *et al.*, 2001), probably less for juvenile plants. The  
56  
57  
58 number of germinated spores in the rhizosphere of assay plants in the present  
59  
60

1  
2  
3  
4  
5  
6  
7 experimental system was calculated based on the amount of recovered rhizosphere soil  
8  
9  
10 (0.5 g per plant) and the increase in the percentage of spores without a nucleus after 7  
11  
12 days of incubation (15-20%). Approximately  $0.7-2.2 \times 10^5$  spores per plant germinated,  
13  
14 corresponding to only 0.05-0.15% of the total number of spores ( $1.4 \times 10^8$ ) in each pot.  
15  
16  
17 These results suggest difficulty in controlling clubroot disease in the field. It is known  
18  
19 that a reduction in disease severity by decoy plants is difficult to achieve in the field,  
20  
21 although decoy plants effectively reduced disease severity in pot experiments by  
22  
23 stimulating spore germination (Murakami *et al.*, 2000; Friberg *et al.*, 2006). Given that  
24  
25 the relative volume of rhizosphere soil is much smaller in the field than in pot  
26  
27 experiments and only a small proportion (15-20% in the present case) of spores  
28  
29 germinate in the rhizosphere, major technical breakthroughs will be required to apply  
30  
31 this strategy to the field.  
32  
33  
34  
35  
36  
37  
38  
39  
40  
41  
42

43  
44 The application of food factory sludge compost (FSC) to soil increased soil pH,  
45  
46 calcium, carbon, nitrogen and phosphorus levels, and there could be additional effects  
47  
48 of these elements on disease suppression. However, this is unlikely because of the fact  
49  
50 that the suppressive effect in FSC-treated soils was cancelled out by acidification with  
51  
52 sulphuric acid (Niwa *et al.*, 2007).  
53  
54  
55  
56  
57  
58

59 A highly reproducible resting spore germination assay system was developed in  
60

1  
2  
3  
4  
5  
6  
7 combination with the plug-pot bioassay by using nuclear/cell-wall double staining  
8  
9  
10 technique coupled with a high recovery rate of spores extracted and purified from  
11  
12  
13 rhizosphere and non-rhizosphere soils.  
14

15  
16 High-resolution images of *P. brassicae* nuclei were obtained using DAPI because of  
17  
18 its high specificity to DNA, but Fluorescent Brightener 28, a cell-wall-specific stain  
19  
20 (Takahashi & Yamaguchi, 1987), was also needed to identify *P. brassicae* spores in the  
21  
22  
23 extracts prepared from soil, even after purification by the Percoll method. However,  
24  
25  
26 using DAPI with Fluorescent Brightener 28 is not practical because the maximal  
27  
28  
29 emission wavelengths of these stains under UV-excitation are very close to each other,  
30  
31  
32 viz. 461 and 450 nm, respectively, and thus it is difficult to assess the presence of nuclei  
33  
34  
35 in the spores with the two stains. SYTO 82 is a nucleic-acid stain with a maximal  
36  
37  
38 emission wavelength at 560 nm under G-excitation and thus does not overlap with  
39  
40  
41 emission from Fluorescent Brightener 28. Furthermore, SYTO 82 provides rather  
42  
43  
44 diffuse images of the nucleus and cytoplasm, probably because of the broad specificity  
45  
46  
47 of the stain, which may react with RNA in the cytoplasm as well as DNA in the nucleus  
48  
49  
50 (Haugland, 2002), and this supports the identification of the (ungerminated) spores  
51  
52  
53 under G-excitation.  
54  
55  
56

57  
58  
59 Buczacki & Ockendon (1978) used 2% Calgon and 40% sucrose solution to extract  
60

1  
2  
3  
4  
5  
6  
7 and purify spores from soil. This procedure, however, requires a few days and probably  
8  
9  
10 causes physiological damage to spores because of the high osmotic pressure of the  
11  
12  
13 sucrose solution. This is an obstacle if the viability of spores is to be assessed.  
14  
15  
16 Takahashi & Yamaguchi (1987) developed a method to remove the coarse particles of  
17  
18  
19 soil and humic substances from the spore suspension by sieving, but it was difficult to  
20  
21  
22 eliminate the fine particles which interfered with the identification of the spores under  
23  
24  
25 the microscope. The high-density centrifugation medium, Percoll, enables the extraction  
26  
27  
28 of the spores more conveniently and reduces fine contaminants drastically, with a high  
29  
30  
31 recovery rate. Removing soil particles from the spore suspension greatly improved the  
32  
33  
34 reliability and reproducibility of the bioassay. However, recovery of spores from  
35  
36  
37 organic-matter-rich soil by this method was difficult compared with that from the  
38  
39  
40 mineral soil used in this study (unpublished data). It is likely that spores are adsorbed  
41  
42  
43 onto the surface of organic matter, and improvement of the recovery rate by shaking  
44  
45  
46 with a detergent and/or sonication to separate the spores from organic matter is being  
47  
48  
49 examined.  
50

51  
52  
53 The reproducibility of the plug-pot soil culture system was good enough to obtain  
54  
55  
56 similar results in different sets of experiments. It does not produce, however, absolutely  
57  
58  
59 similar numbers of root-hair infections in each set of experiments, as discussed  
60

1  
2  
3  
4  
5  
6  
7 previously (Niwa *et al.*, 2007). For instance, the numbers of root-hair infections shown  
8  
9  
10 in Fig. 4 differed between the first and second experiments, although the percentages of  
11  
12 spores without nucleus were similar. It is likely that the infection process is more  
13  
14 sensitive to environmental factors (e.g. soil moisture and host nutrient status, which may  
15  
16 affect root-hair development) than the germination process, thus the number of root-hair  
17  
18 infections might be less reproducible than percentage germination. Replication of  
19  
20 independent experiments, however, significantly improved the reliability of results  
21  
22 obtained by the culture system.  
23  
24  
25  
26  
27  
28  
29  
30

31 In the present study, a reliable germination assay system under soil culture conditions  
32  
33 in conjunction with nuclear/cell-wall double staining, was established. It was revealed  
34  
35 that suppression of clubroot disease under neutral soil pH was caused by the inhibition  
36  
37 of spore germination in the rhizosphere, although the suppressive effects of  
38  
39 neutralization and calcium remain to be differentiated. Further investigations on the  
40  
41 molecular aspects of spore germination would make a significant contribution to the  
42  
43 understanding of the occurrence of clubroot disease.  
44  
45  
46  
47  
48  
49  
50  
51  
52  
53  
54  
55

## 56 Acknowledgements

57  
58

59 We are grateful to Y. Tahara, M. Maesaka and S. Mizuno for providing the clubroot  
60

1  
2  
3  
4  
5  
6  
7 inocula from the experimental field of Nagoya University. TE was supported by a  
8  
9  
10 Grant-in-Aid for Scientific Research from the Japan Society for the Promotion of  
11  
12  
13 Science.  
14  
15  
16  
17  
18

## 19 References

- 20  
21  
22 Asano T, Kageyama K, Hyakumachi M, 2000. Germination of surface-disinfected  
23  
24 resting spores of *Plasmodiophora brassicae* and their root hair infection in  
25  
26 turnip hairy roots. *Mycoscience* **41**, 49-54.  
27  
28  
29  
30  
31 Bowen GD, Rovira AD, 1999. The rhizosphere and its management to improve plant  
32  
33 growth. *Advances in Agronomy* **66**, 1-102.  
34  
35  
36  
37 Buczacki ST, Ockendon JG, 1978. A method for the extraction and enumeration of  
38  
39 resting spores of *Plasmodiophora brassicae* from infested soil. *Annals of*  
40  
41 *Applied Biology* **88**, 363-7.  
42  
43  
44  
45  
46  
47 Campbell RN, Greathead AS, Myers DF, Deboer GJ, 1985. Factors related to control of  
48  
49 clubroot of crucifers in the Salinas Valley of California. *Phytopathology* **75**,  
50  
51 665-70.  
52  
53  
54  
55  
56 Colhoun J, 1953. A study of the epidemiology of clubroot disease of crucifers. *Annals of*  
57  
58 *Applied Biology* **40**, 263-83.  
59  
60

- 1  
2  
3  
4  
5  
6  
7 Dobson RL, Gabrielson RL, Baker AS, Bennett L, 1983. Effects of lime particle-size  
8  
9  
10 and distribution and fertilizer formulation on clubroot disease caused by  
11  
12  
13 *Plasmodiophora brassicae*. *Plant Disease* **67**, 50-2.  
14  
15  
16 Friberg H, Lagerlöf J, Rämert B, 2005. Germination of *Plasmodiophora brassicae*  
17  
18  
19 resting spores stimulated by a non-host plant. *European Journal of Plant*  
20  
21  
22 *Pathology* **113**, 275-81.  
23  
24  
25 Friberg H, Lagerlöf J, Rämert B, 2006. Usefulness of non-host plants in managing  
26  
27  
28 *Plasmodiophora brassicae*. *Plant Pathology* **55**, 690-5.  
29  
30  
31 Haugland RP, 2002. *Handbook of Fluorescent Probes and Research Products*, 9th edn.  
32  
33  
34 Eugene, OR, USA: Molecular Probes.  
35  
36  
37 Hinsinger P, Gobran GR, Gregory PJ, Wenzel WW, 2005. Rhizosphere geometry and  
38  
39  
40 heterogeneity arising from root-mediated physical and chemical processes. *New*  
41  
42  
43 *Phytologist* **168**, 293-303.  
44  
45  
46  
47 Ingram DS, Tommerup IC, 1972. The life history of *Plasmodiophora brassicae* Woron.  
48  
49  
50 *Proceedings of the Royal Society of London. Series B, Biological Sciences* **180**,  
51  
52  
53 103-12.  
54  
55  
56 Macfarlane I, 1970. Germination of resting spores of *Plasmodiophora brassicae*.  
57  
58  
59 *Transactions of the British Mycological Society* **55**, 97-112.  
60

- 1  
2  
3  
4  
5  
6  
7 Mengel K, Kirkby EA, Kosegarten H, Appel T, 2001. *Principles of Plant Nutrition*, 5th  
8  
9 edn. Dordrecht, the Netherlands: Kluwer Academic.  
10  
11  
12  
13 Murakami H, Tsushima S, Akimoto T, Murakami K, Goto I, Shishido Y, 2000. Effects  
14  
15 of growing leafy daikon (*Raphanus sativus*) on populations of *Plasmodiophora*  
16  
17 *brassicae* (clubroot). *Plant Pathology* **49**, 584-9.  
18  
19  
20  
21  
22 Murakami H, Tsushima S, Kuroyanagi Y, Shishido Y, 2002. Reduction of resting spore  
23  
24 density of *Plasmodiophora brassicae* and clubroot disease severity by liming.  
25  
26  
27  
28 *Soil Science and Plant Nutrition* **48**, 685-91.  
29  
30  
31  
32 Myers DF, Campbell RN, 1985. Lime and the control of clubroot of crucifers: effects of  
33  
34 pH, calcium, magnesium, and their interactions. *Phytopathology* **75**, 670-3.  
35  
36  
37  
38 Naiki T, Dixon GR, Ikegami H, 1987. Quantitative estimation of spore germination of  
39  
40 *Plasmodiophora brassicae*. *Transactions of the British Mycological Society* **89**,  
41  
42 569-609.  
43  
44  
45  
46  
47 Niwa R, Kumei T, Nomura Y, Yoshida S, Osaki M, Ezawa T, 2007. Increase in soil pH  
48  
49 due to Ca-rich organic matter application causes suppression of the clubroot  
50  
51 disease of crucifers. *Soil Biology and Biochemistry* **39**, 778-85.  
52  
53  
54  
55  
56 Suzuki K, Matsumiya E, Ueno Y, Mizutani J, 1992. Some properties of  
57  
58 germination-stimulating factor from plants for resting spores of *Plasmodiophora*  
59  
60



1  
2  
3  
4  
5  
6  
7 *brassicae*. *Annals of the Phytopathological Society of Japan* **58**, 699-705.

8  
9  
10 Takahashi K, 1991. Correlation between fluorescent staining reaction and germination  
11  
12 in resting spores of *Plasmodiophora brassicae*. *Annals of the Phytopathological*  
13  
14 *Society of Japan* **57**, 160-4.

15  
16  
17  
18  
19 Takahashi K, Yamaguchi T, 1987. An improved method for estimating the number of  
20  
21 resting spores of *Plasmodiophora brassicae* in soil. *Annals of the*  
22  
23 *Phytopathological Society of Japan* **53**, 507-15.

24  
25  
26  
27  
28 Takahashi K, Yamaguchi T, 1989. Assessment of pathogenicity of resting spores of  
29  
30 *Plasmodiophora brassicae* in soil by fluorescent microscopy. *Annals of the*  
31  
32 *Phytopathological Society of Japan* **55**, 621-8.

33  
34  
35  
36  
37 Tremblay N, Bélec C, Coulombe J, Godin C, 2005. Evaluation of calcium cyanamide  
38  
39 and liming for control of clubroot disease in cauliflower. *Crop Protection* **24**,  
40  
41 798-803.

42  
43  
44  
45  
46  
47 Wallenhammar AC, 1996. Prevalence of *Plasmodiophora brassicae* in a spring oilseed  
48  
49 rape growing area in central Sweden and factors influencing soil infestation  
50  
51 levels. *Plant Pathology* **45**, 710-9.

52  
53  
54  
55  
56 Webster MA, Dixon GR, 1991. Calcium, pH and inoculum concentration influencing  
57  
58 colonization by *Plasmodiophora brassicae*. *Mycological Research* **95**, 64-73.

### Figure captions

**Figure 1** Resting spores of *Plasmodiophora brassicae* stained with 4'-6-diamidino-2-phenylindole-dihydrochloride. Spores with (arrowheads) or without a nucleus (arrows) were observed under UV-excitation. Scale bar, 10  $\mu$ m.

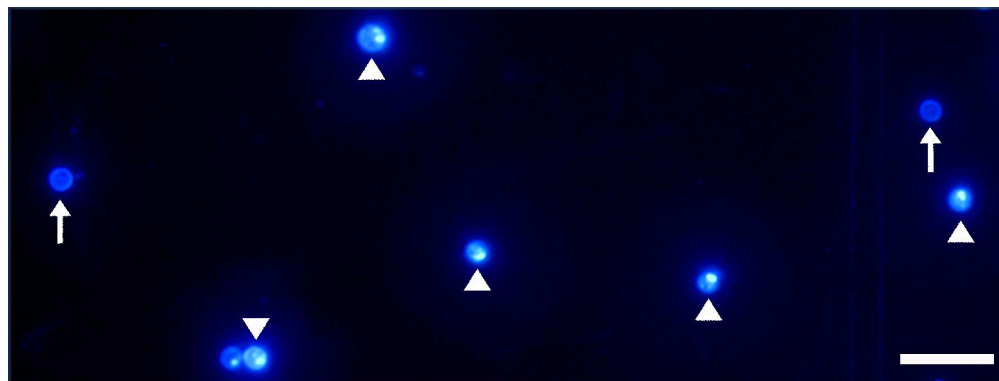
**Figure 2** Effect of host plants on the mean percentage of *Plasmodiophora brassicae* spores without a nucleus stained with 4'-6-diamidino-2-phenylindole-dihydrochloride before and after incubation in glass-beads solution culture. The experiment was conducted twice (1st and 2nd) using different lots of inoculum. Vertical bars indicate standard errors ( $n = 3$ ). Columns with different letters are significantly different (LSD test,  $P < 0.05$ ).

**Figure 3** Resting spores of *Plasmodiophora brassicae* stained with Fluorescent Brightener 28 (UV-excitation) and SYTO 82 orange fluorescent nucleic-acid stain (G-excitation). The two photographs were taken from the same field under different excitations. Spores with (arrowheads) or without a nucleus (arrows) were discriminated under G-excitation. Scale bar, 10  $\mu$ m.

**Figure 4** Effect of host plants on the mean percentage of *Plasmodiophora brassicae* spores without a nucleus as assessed by the double staining method. Spores were

1  
2  
3  
4  
5  
6  
7 incubated for 7 days with *Brassica rapa* var. *perviridis* seedlings in a disease-conductive  
8  
9  
10 soil, then collected from the rhizosphere and non-rhizosphere soils and stained with  
11  
12 Fluorescent Brightener 28 and SYTO 82 orange fluorescent nucleic-acid stain. The  
13  
14 number of root-hair infections of *P. brassicae* was assessed after staining with aniline  
15  
16 blue/phenol solution. The experiment was conducted twice (1st and 2nd) using different  
17  
18 lots of inoculum. Vertical bars indicate standard errors ( $n = 3$ ). Columns with different  
19  
20 letters are significantly different (LSD test,  $P < 0.05$ ).  
21  
22  
23  
24  
25  
26  
27

28 **Figure 5** Effect of a) food factory sludge compost (FSC) and b)  $\text{CaCO}_3$  on the mean  
29  
30 percentage of *Plasmodiophora brassicae* spores without a nucleus, as assessed by the  
31  
32 double-staining method. Spores were incubated for 7 days with *Brassica rapa* var.  
33  
34 *perviridis* seedlings in the presence or absence of (a) 25 g FSC  $\text{kg}^{-1}$  soil or (b) 2.5 g  
35  
36  $\text{CaCO}_3$   $\text{kg}^{-1}$  soil, collected from the rhizosphere and non-rhizosphere soils and stained  
37  
38 with Fluorescent Brightener 28 and SYTO 82 orange fluorescent nucleic-acid stain. The  
39  
40 number of root-hair infections of *P. brassicae* was assessed after staining with aniline  
41  
42 blue/phenol solution. Soil pH was measured after incubation. Vertical bars indicate  
43  
44 standard errors ( $n = 3$ ). Columns with different letters are significantly different (LSD  
45  
46 test,  $P < 0.05$ ).  
47  
48  
49  
50  
51  
52  
53  
54  
55  
56  
57  
58  
59  
60

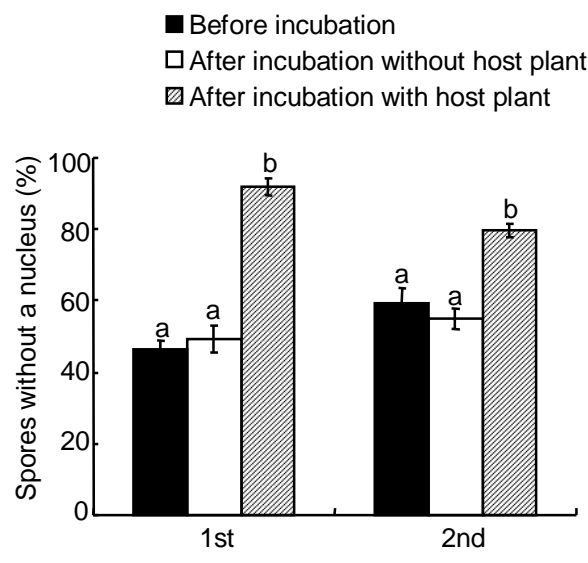


**Figure 1**  
308x116mm (300 x 300 DPI)

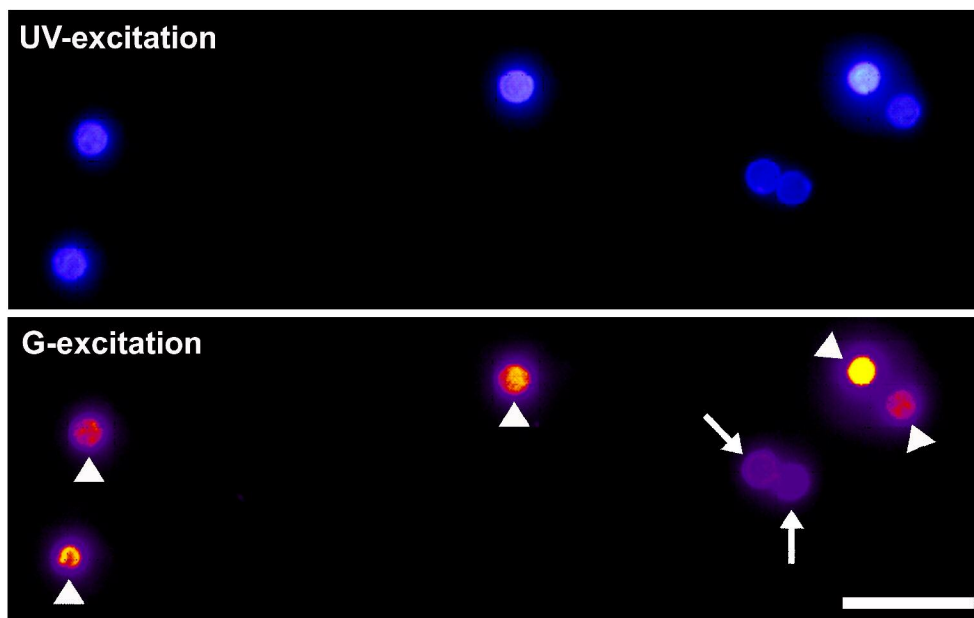
Peer Review

1  
2  
3  
4  
5  
6  
7  
8  
9  
10  
11  
12  
13  
14  
15  
16  
17  
18  
19  
20  
21  
22  
23  
24  
25  
26  
27  
28  
29  
30  
31  
32  
33  
34  
35  
36  
37  
38  
39  
40  
41  
42  
43  
44  
45  
46  
47  
48  
49  
50  
51  
52  
53  
54  
55  
56  
57  
58  
59  
60

1  
2  
3  
4  
5  
6  
7  
8  
9  
10  
11  
12  
13  
14  
15  
16  
17  
18  
19  
20  
21  
22  
23  
24  
25  
26  
27  
28  
29  
30  
31  
32  
33  
34  
35  
36  
37  
38  
39  
40  
41  
42  
43  
44  
45  
46  
47  
48  
49  
50  
51  
52  
53  
54  
55  
56  
57  
58  
59  
60



**Figure 2**  
*Niwa et al.*

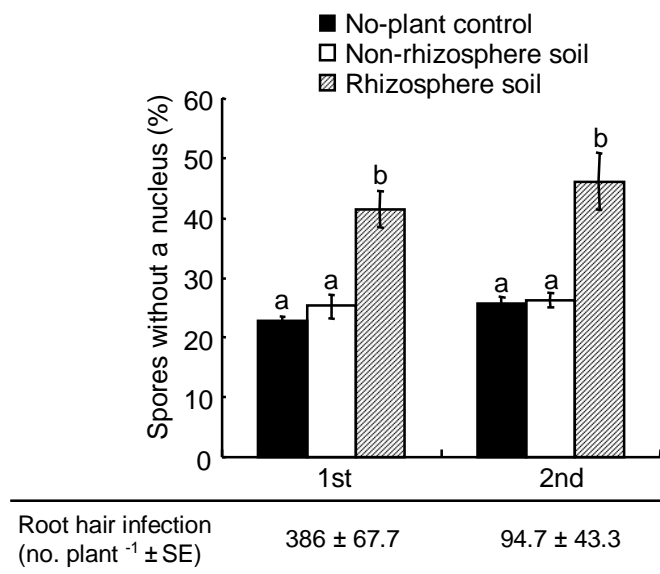


**Figure 3**  
270x170mm (300 x 300 DPI)

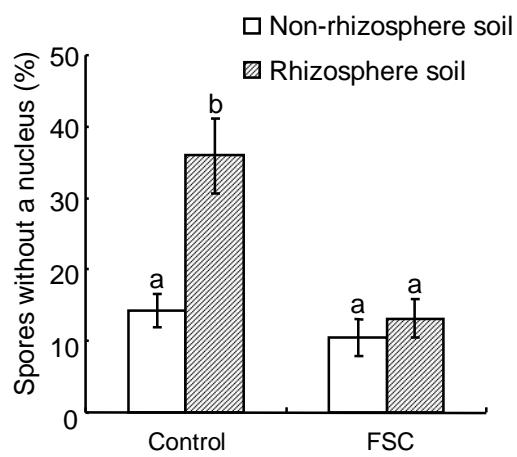
Review

1  
2  
3  
4  
5  
6  
7  
8  
9  
10  
11  
12  
13  
14  
15  
16  
17  
18  
19  
20  
21  
22  
23  
24  
25  
26  
27  
28  
29  
30  
31  
32  
33  
34  
35  
36  
37  
38  
39  
40  
41  
42  
43  
44  
45  
46  
47  
48  
49  
50  
51  
52  
53  
54  
55  
56  
57  
58  
59  
60

1  
2  
3  
4  
5  
6  
7  
8  
9  
10  
11  
12  
13  
14  
15  
16  
17  
18  
19  
20  
21  
22  
23  
24  
25  
26  
27  
28  
29  
30  
31  
32  
33  
34  
35  
36  
37  
38  
39  
40  
41  
42  
43  
44  
45  
46  
47  
48  
49  
50  
51  
52  
53  
54  
55  
56  
57  
58  
59  
60



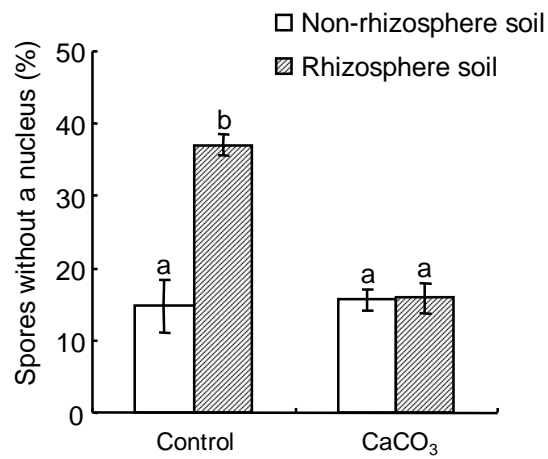
**Figure 4**  
*Niwa et al.*



Soil pH	6.0	6.9
Root hair infection (no. plant <sup>-1</sup> ± SE)	233 ± 35 a	18.5 ± 6.6 b

**Figure 5**  
Niwa *et al.*





Soil pH	6.2	7.1
Root hair infection (no. plant <sup>-1</sup> ± SE)	298.6 ± 102.8 a	13.5 ± 5.8 b

**Figure 6**  
Niwa *et al.*