



Title	Near-infrared spectroscopic sensing system for on-line milk quality assessment in a milking robot
Author(s)	Kawasaki, Masataka; Kawamura, Shuso; Tsukahara, Maki; Morita, Shigeru; Komiya, Michio; Natsuga, Motoyasu
Citation	Computers and Electronics in Agriculture, 63(1), 22-27 https://doi.org/10.1016/j.compag.2008.01.006
Issue Date	2008-08-01
Doc URL	http://hdl.handle.net/2115/33889
Type	article (author version)
File Information	kawamura.pdf



[Instructions for use](#)

Near-infrared spectroscopic sensing system for online milk quality assessment in a milking robot

Masataka Kawasaki a, Shuso Kawamura a,* , Maki Tsukahara a, Shigeru Morita b, Michio Komiya b, Motoyasu Natsuga c

a Agricultural and Food Process Engineering Lab., School of Agricultural Science, Hokkaido University, Sapporo 060-8589, Japan

b Faculty of Dairy Science, Rakuno Gakuen University, Ebetsu 069-8501, Japan

c Section of Agricultural Ecology and Engineering, Yamagata University, Tsuruoka 997-8555, Japan

* Corresponding author. E-mail address: shuso@bpe.agr.hokudai.ac.jp (S. Kawamura). Phone: +81 11 706 2558. Fax: +81 11 706 3886.

Abstract

A near-infrared (NIR) spectroscopic sensing system was constructed on an experimental basis. This system enabled NIR spectra of raw milk to be obtained in an automatic milking system (milking robot system) over a wavelength range of 600 nm to 1050 nm. Calibration models for determining three major milk constituents (fat, protein and lactose), somatic cell count (SCC) and milk urea nitrogen (MUN) of unhomogenized milk were developed, and the precision and accuracy of the models were validated. The coefficient of determination (r^2) and standard error of prediction (SEP) of the validation set for fat were 0.95 and 0.25%, respectively. The values of r^2 and SEP for lactose were 0.83 and 0.26%, those for protein were 0.72 and 0.15%, those for SCC were 0.68 and 0.28 log SCC/mL, and those for MUN were 0.53 and 1.50 mg/dL, respectively. These results indicate that the NIR spectroscopic system can be used to assess milk quality in real time in an automatic milking system. The system can provide dairy farmers with information on milk quality and physiological condition of an individual cow and, therefore, give them feedback control for optimizing dairy farm management. By using the system, dairy farmers will be able to produce high-quality milk and precision dairy farming will be realized.

Keywords: Quality control, Spectroscopy, Management system, Diagnosis, Monitoring

1. Introduction

Dairy farming is labor-intensive and involves many tasks such as feeding, milking, livestock management, feed crop production and manure treatment. Large-scale dairy farmers manage their livestock in groups, a system known as herd management. However, monitoring the milk quality of each cow and managing each cow according to milk quality and physiological condition, a system known as individual cow management, is also essential for optimum production of high-quality milk. Milk quality is greatly affected by the physiological condition of cows. Therefore, assessment of milk quality of each cow is necessary for individual cow management (Svennersten-Sjaunja *et al.*, 1997). Recently, there has been a need for an automatic on-line method that will enable dairy farmers to assess milk quality of an individual cow during milking.

Near-infrared spectroscopy (NIRS) is a nondestructive method for quality evaluation. Advantages of NIRS include, but are not limited to, the fact that on-line measurement can be performed rapidly, pollution-free and without pre-treatment. NIRS has been widely used in quality evaluation of foods and agricultural commodities including rice (Kawamura *et al.*, 2002; Kawamura *et al.*, 2003; Natsuga *et al.*, 2006), wheat (Natsuga *et al.*, 2001) and satsuma mandarins (Miyamoto *et al.*, 1998). NIRS has also been used to assess milk quality (Sato *et al.*, 1987; Tsenkova *et al.*, 1999; Tsenkova *et al.*, 2001; Natsuga *et al.*, 2002), but it has been difficult to apply NIRS to real-time on-line monitoring of milk quality of an individual cow during milking.

An experimental, on-line, near-infrared (NIR) spectroscopic sensing system has been constructed to assess milk quality. Kawamura *et al.* (2007) reported that the NIR spectroscopic sensing system can be used for real-time assessment of milk quality during milking with sufficient precision and accuracy. Based on these results, the NIR spectroscopic sensing system was installed in an automatic milking system (a milking robot system). A milking robot is a system that performs voluntary milking for cows (i.e., each cow deciding milking time and milking interval) at any time during the day without the requirement of human labor. Milking robot systems have been available commercially since 1990s, and the use of these systems has improved herd management. However, in the milking robot system, a sensing system to examine milk quality and physiological condition of the individual cow is needed.

In this study, the precision and accuracy of the NIR spectroscopic sensing system for assessing milk quality during milking by a milking robot system were validated.

2. Materials and methods

2.1 Near-infrared spectroscopic sensing system

An experimental, on-line, NIR spectroscopic sensing system for assessing milk quality of an individual cow during milking was constructed. The system consisted of an NIR spectroscopic instrument, a milk flow meter, a milk sampler and a laptop computer (Fig. 1). The system was installed in a milking robot system (Astronaut, Lely Industries NV, Maasland, Holland) with the milk being bypassed from the teat cups to a milk jar (Fig. 2). Raw milk from the milking robot continuously flowed into the milk chamber of the spectrum sensor and flowed out through an outlet pipe for surplus milk to the milk flow meter. The volume of milk sample in the chamber was about 230 mL. The optical axes of a halogen lamp and an optical fiber were set at right angles to each other at the same levels (Fig. 3). The spectrum sensor acquired spectra of diffusion transmittance (interactance) through the milk. The diffusion transmittance spectra were recorded in the wavelength range of 600 to 1050 nm at 1-nm intervals every 10 seconds during milking (Table 1). Six continual spectra were averaged to obtain a spectrum for one minute.

2.2 Cows and milk samples

Seventeen Holstein cows in the stage of early lactation to late lactation were used in the experiment (Table 2). The experiment was conducted all day and night on October 20th and 21st, 2003. Milking was automatically started whenever a cow walked into the milking robot. Milk samples were collected from the milk sampler every minute during

milking. The experiment was conducted to cover variations in milk spectra caused by cow individuality, calving times, lactation stage, milking time and environmental temperature.

2.3 Reference analyses

Three major milk constituents (fat, protein and lactose), somatic cell count (SCC) and milk urea nitrogen (MUN) of raw milk were measured as indices of milk quality in this study. The milk constituents and MUN were determined using a Milkoscan 4000 (Foss Electric, Hillerød, Denmark), and SCC was determined using a Fossomatic 5000 (Foss Electric). The total number of samples used for reference analyses was 216 for milk constituents and SCC and 210 for MUN. SCC was converted into common logarithms.

2.4 Chemometric analyses

Chemometric analyses were carried out to develop calibration models for each milk quality item and to validate the precision and accuracy of the models. Spectral data analyses software (The Unscrambler ver. 9.6, Camo AS, Trondheim, Norway) was used for the analyses. The reference samples were randomly divided into two sample sets: a calibration subset containing two-thirds of all samples and a validation subset containing the remaining samples (one-third). The statistical method of partial least squares (PLS) was used to develop calibration models from the transmittance spectra and reference data. Pretreatment of the spectra such as smoothing or second derivatives was not performed.

3. Results and discussion

3.1 NIR spectra

Figure 4 shows an example of original NIR spectra of raw milk from cow number 304 during milking on October 21, 2003. Optical density of the transmittance spectra exceeds 100% in the wavelength range of 600 to 1050 except 950 to 1020 nm. A reference spectrum was measured when there was no milk in the milk chamber, i.e., when there was only air in the milk chamber. Transmittance spectra of raw milk were measured when the chamber was full with milk. The optical density exceeded 100% because of scattering of light by fat globules in raw milk. The deep valley of the spectra in the wavelength range of 970 to 990 nm in Fig. 4 indicates second-overtone absorption by water molecules. The two valleys in the spectra around 740 nm and 840 nm indicate overtone absorption by C-H strings and C-C strings that are associated with fat (triacylglycerol).

3.2 Precision and accuracy of calibration models

The validation statistics of the NIR sensing system for determination of milk quality are summarized in Table 3. Correlations between reference and NIRS-predicted values of fat, lactose, protein, SCC and MUN are shown in Figures 5 to 9, respectively.

The three major milk constituents are the main factors determining the quality of milk. The milk constituents are affected by the physiological condition of each cow and

feedstuff. Monitoring of milk constituents during milking every day can be used for management of each cow and her feed. The coefficient of determination (r^2), standard error of prediction (SEP) and bias of the validation set for fat were 0.95, 0.25% and -0.06%, respectively. The values of r^2 , SEP and bias for lactose were 0.83, 0.26% and 0.00%, respectively, and the values of r^2 , SEP and bias for protein were 0.72, 0.15% and 0.00%, respectively. Sufficient levels of precision and accuracy for predicting the three major milk constituents were indicated by the high values of r^2 and the small values of SEP compared with the range of each constituent and by the negligible values of bias (almost zero). The performance of the calibration model for fat was excellent. The reason for the high performance of the calibration model for fat was that milk spectra had much information on fat content from scattering of light by fat globules and absorption by C-H strings and C-C strings of triacylglycerol. The results indicated that the NIR spectroscopic sensing system constructed in this study can be used for real-time on-line assessment of milk constituents during milking by a milking robot.

SCC has been accepted as the world standard for mastitis diagnosis and it is an important indicator of milk quality. A cow that produces milk containing less than 100,000 somatic cells per mL (i.e., 4 log SCC/mL) is healthy, while a cow that produces milk containing more than 200,000 somatic cells per mL (i.e., 5.3 log SCC/mL) may have subclinical mastitis (Satu, 2003). The values of r^2 and SEP for SCC prediction were 0.68 and 0.28 log SCC/mL, respectively. Using the calibration model for SCC to classify milk samples into two qualitative groups (milk samples from healthy cows and milk samples from other cows) gave a probability for classifying them correctly of 82% (Shenk *et al.*, 1993). Thus, the calibration model could also be used for diagnosis of subclinical mastitis.

MUN is an indicator of protein feeding efficiency in dairy cows (Godden *et al.*, 2001; Nousiainen *et al.*, 2004). When MUN is very low, milk production becomes poor. On the other hand, when MUN is very high, environmental nitrogen emission is increased by urine and fecal output from the cow (Frank *et al.*, 2002) and infertility of the cow increases (Rajala-Schultz *et al.*, 2001). The values of r^2 and SEP for MUN prediction were 0.53 and 1.50 mg/dL, respectively. The performance of the calibration model for MUN was lower than the performance of the calibration models for other milk quality items. However, a calibration model with these levels of accuracy and precision could be used for monitoring the nutritional status of individual cows.

The results of validation of the calibration models developed in this study indicated that the NIR spectroscopic sensing system could be used to assess milk quality during milking. The samples for the calibration subset and validation subset were taken within the same time period in this study. In the practical use of the NIR sensing system for real-time on-line monitoring of milk quality, calibration models must be used for unknown samples, i.e., calibration models developed from samples taken in one time period must be used to assess milk quality in a later time period. To maintain the precision and accuracy of the calibration models in practical use, it is necessary to update the calibration sample set periodically and develop updated calibration models. Future work is needed for practical use of the NIR sensing system to monitor milk quality during milking.

4. Conclusion

The on-line NIR spectroscopic sensing system developed in this study can be used for

real-time on-line monitoring of fat, protein, lactose, SCC and MUN during milking by a milking robot with sufficient precision and accuracy. The system can provide dairy farmers with information on milk quality and physiological condition of an individual cow and therefore give them feedback control for optimizing dairy farm management. By using the system, dairy farmers will be able to produce high-quality milk and precision dairy farming will be realized.

References

- Frank, B., Swensson, C., 2002. Relationship between Content of Crude Protein in Rations for Dairy Cows and Milk Yield, Concentration of Urea in Milk and Ammonia Emissions. *J. Dairy Sci.* 85, 1829-1838.
- Godden, S. M., Lissemore, K. D., Kelton, D. F., Leslie, K. E., Walton, J. S., Lumsden, J. H., 2001. Relationships Between Milk Urea Concentrations and Nutritional Management, Production, and Economic Variables in Ontario Dairy Herds. *J. Dairy Sci.* 84, 1128-1139.
- Kawamura, S., Takekura, K., Itoh, K., 2002. Accuracy of Near-infrared Transmission Spectroscopy for Determining Rice Constituent Contents and Improvement in the Accuracy. Paper number 023006, 2002 ASAE Annual Meeting / CIGR XVth World Congress, Chicago, Illinois, USA.
- Kawamura, S., Natsuga, M., Takekura, K., Itoh, K., 2003. Development of an automatic rice-quality inspection system. *Computers and Electronics in Agriculture.* 40, 115-126.
- Kawamura, S., Kawasaki, M., Nakatsuji, H., Natsuga, M., 2007. Near-Infrared Spectroscopic Sensing System for Online Monitoring of Milk Quality during Milking. *J. Sensing and Instrumentation for Food Quality and Safety.* 1, 37-43.
- Miyamoto, K., Kawauchi, M., Fukuda, T., 1998. Classification of high acid fruits by partial least squares using the near infrared transmittance spectra of intact satsuma mandarins. *J. Near Infrared Spectroscopy.* 6, 267-271.
- Natsuga, M., Kawamura, S., Itoh, K., 2001. Determination of the Quality of High-Moisture Wheat Using Near-Infrared Spectroscopy (Part 1) - Determination of Moisture and Protein Content in High-Moisture Wheat. *J. Jpn. Soc. of Agricultural Machinery.* 63(1), 93-99.
- Natsuga, M., Kawamura, S., Itoh, K., 2002. Effects of Wavelength Range and Light Path-length on the Accuracy of the Constituent Analysis of Raw Milk Using Near-infrared Spectroscopy. *J. Jpn. Soc. of Agricultural Machinery.* 64(5), 83-88.
- Natsuga, M., Kawamura, S., 2006. Visible and Near-Infrared Reflectance Spectroscopy for Determining Physicochemical Properties of Rice. *Transactions of ASABE.* 49(4), 1069-1076.
- Nousiainen, J., Shingfield, K. J., Huhtanen, P., 2004. Evaluation of Milk Urea Nitrogen as a Diagnostic of Protein Feeding. *J. Dairy Sci.* 87, 386-398.
- Rajala-Schultz, P. J., Saville, W. J. A., Frazer, G. S., Wittum, T. E., 2001. Association between Milk Urea Nitrogen and Fertility in Ohio Dairy Cows. *J. Dairy Sci.* 84, 482-489.
- Sato, T., Yoshino, M., 1987. Analysis of Milk Constituents by the Near-infrared Spectrophotometric Method. *Jpn. J. Zootech. Science.* 58(8), 698-706.
- Satu, P., 2003. Indicators of inflammation in the diagnosis of mastitis. *Vet. Res.* 34, 565-578.

- Shenk, J. S., Westerhaus, M. O., 1993. Analysis of agriculture and food products by near-infrared reflectance spectroscopy. Intrasoft International: Port Matilda, 63-66.
- Svennersten-Sjaunja, K., Sjaunja, L.-O., Bertilsson, J., Wiktorsson, H., 1997. Use of regular milking recorded versus daily records for nutrition and other kinds of management. *Livestock Production Science*. 48, 167-174.
- Tsenkova, R., Atanassova, S., Toyoda, K., Ozaki, Y., Itoh, K., Fearn, T., 1999. Near-infrared Spectroscopy for Dairy Management: Measurement of Raw Milk Composition. *J. Dairy Sci.* 82, 2344-2351.
- Tsenkova, R., Atanassova, S., Kawano, S., Toyoda, K., 2001. Somatic cell count determination in cow's milk by near-infrared spectroscopy: A new diagnostic tool. *J. Anim. Sci.* 79, 2550-2557.

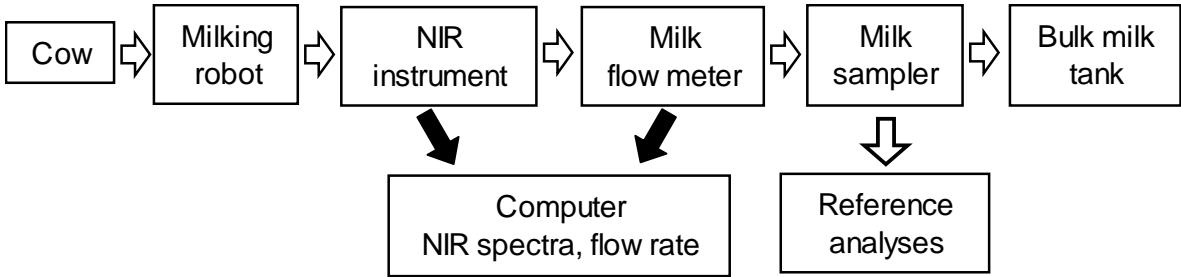


Fig. 1. Flow chart of an on-line near-infrared spectroscopic sensing system for assessing milk quality in an automatic milking system.

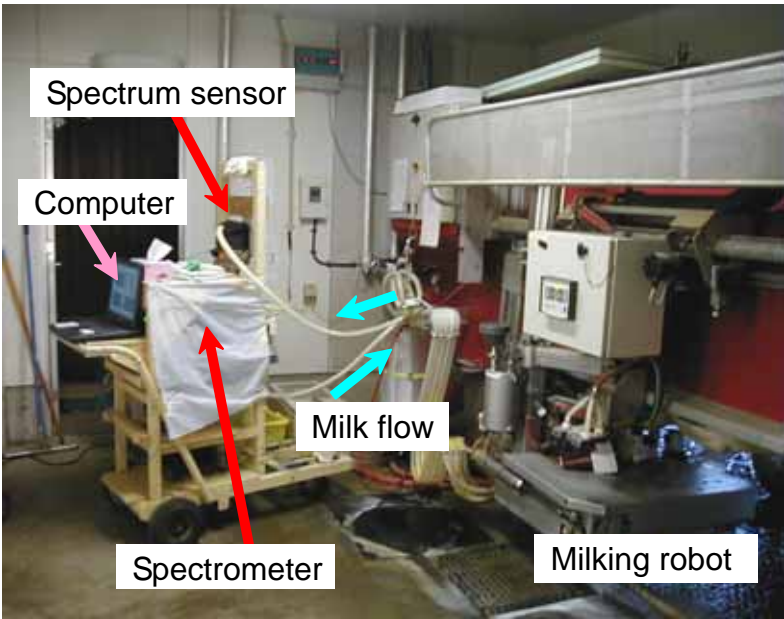


Fig. 2. On-line near-infrared spectroscopic sensing system installed in an automatic milking system.

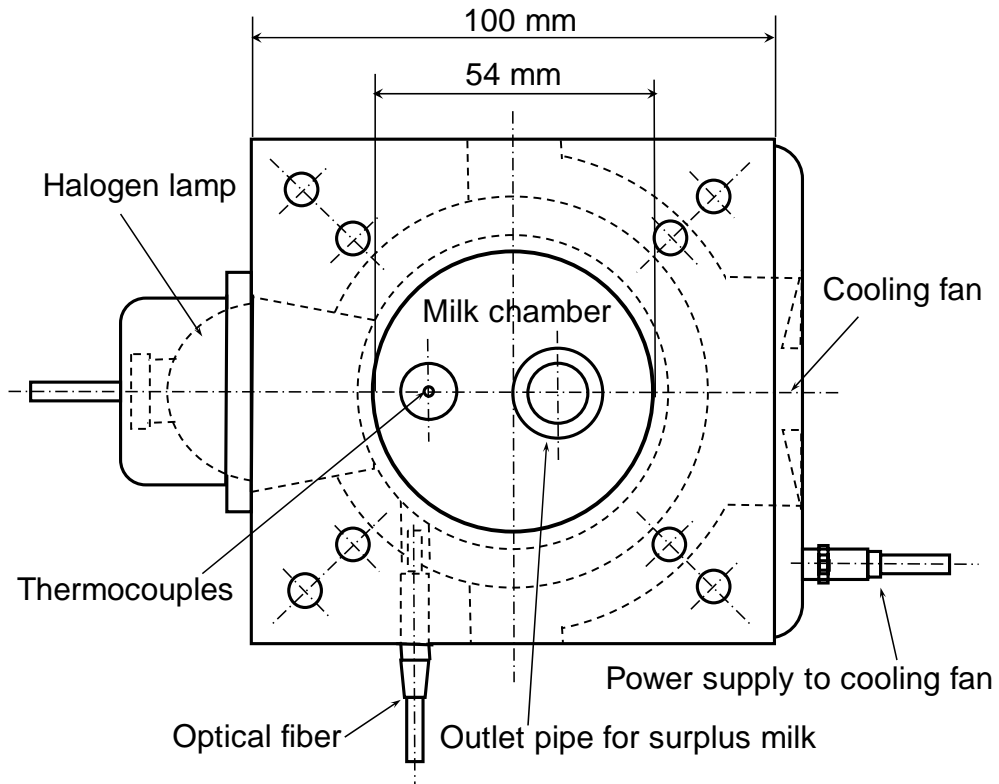


Fig. 3. Plane view of the near-infrared spectrum sensor.

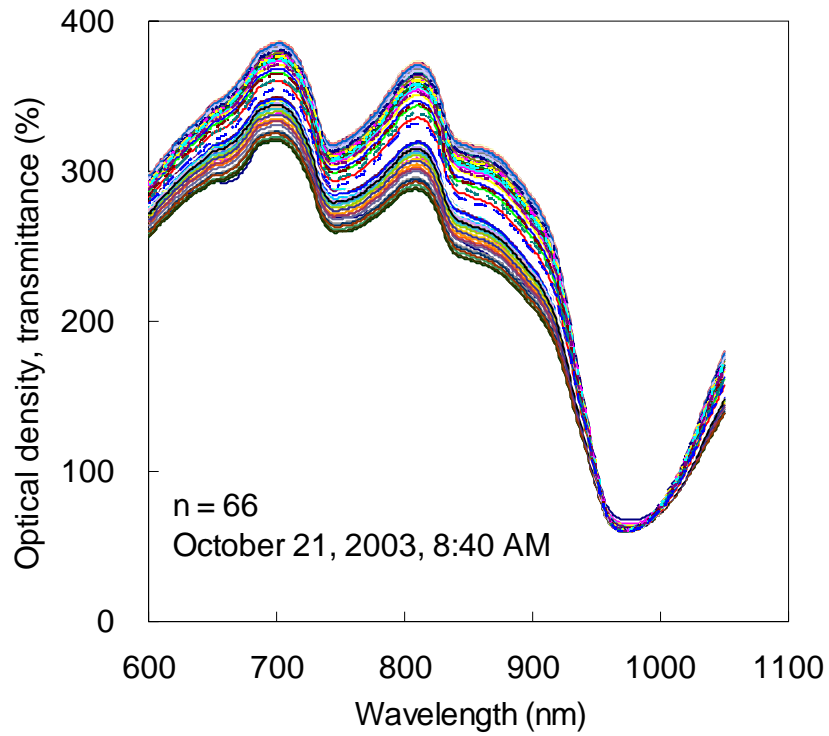


Fig. 4. Original spectra of unhomogenized milk from cow number 304 during milking on October 21, 2003.

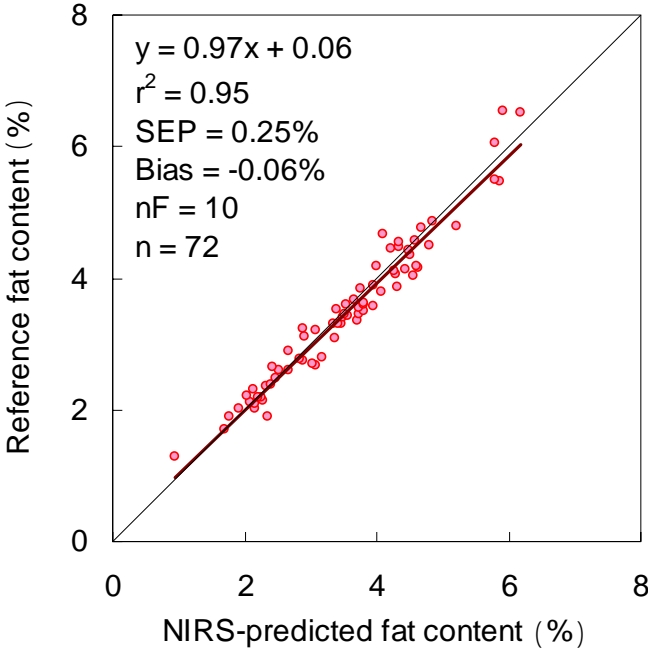


Fig. 5. Correlation between reference fat content and NIRS-predicted fat content.

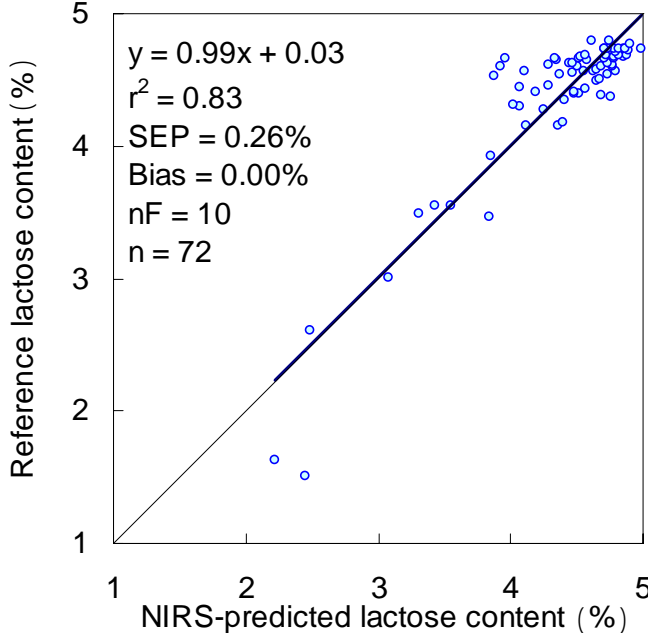


Fig. 6. Correlation between reference lactose content and NIRS-predicted lactose content.

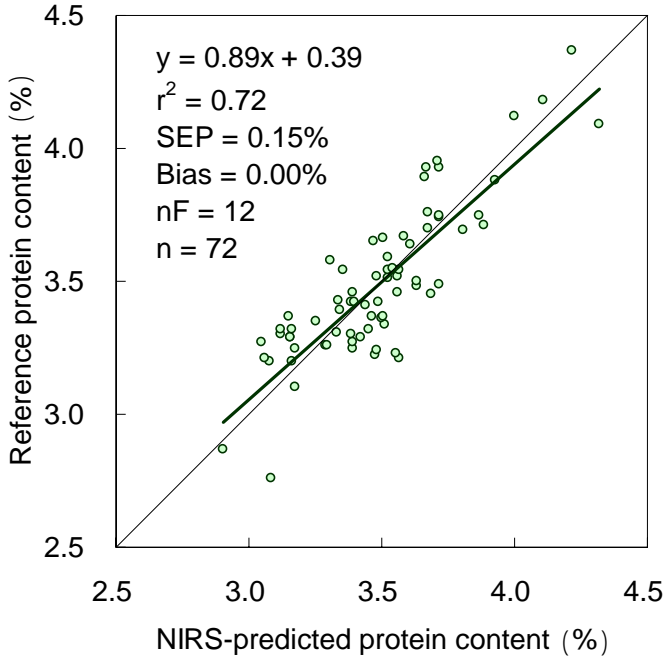


Fig. 7. Correlation between reference protein content and NIRS-predicted protein content.

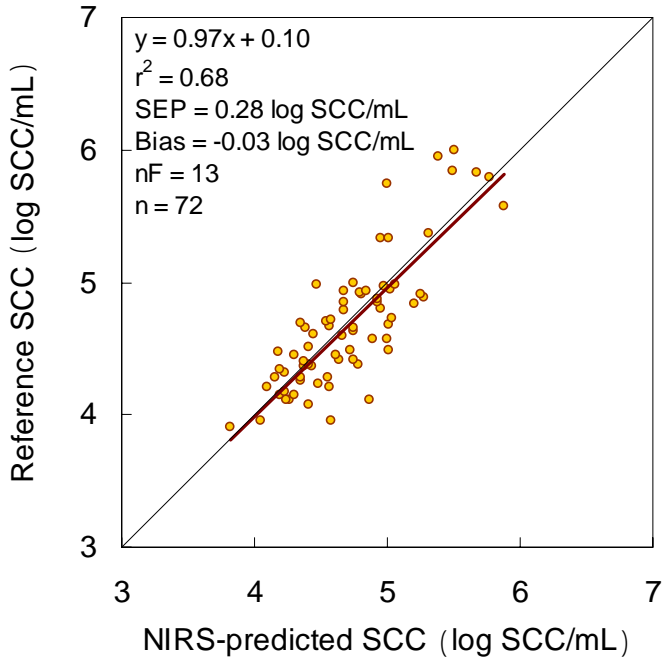


Fig. 8. Correlation between reference SCC and NIRS-predicted SCC.

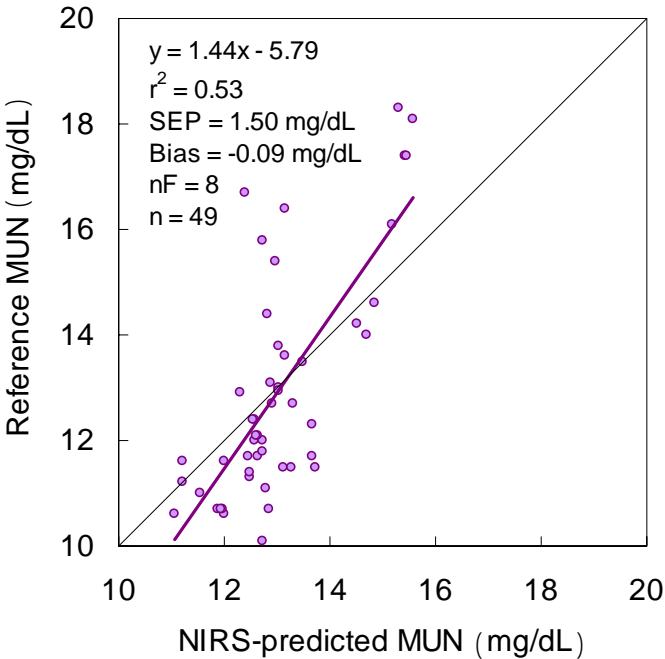


Fig. 8. Correlation between reference MUN and NIRS-predicted MUN.

Table 1. Specifications of the near-infrared spectroscopic instrument

Devices	Specifications
Spectrum sensor	Diffusion transmittance spectrum sensor
Light source	Halogen lamp
Optical fiber	Silica glass fiber, 0.6-mm in diameter
Milk chamber surface	Glass
Volume of milk sample	Approx 230 mL
Distance between optical axis and milk level	93 mm
Spectrometer	Diffraction grating spectrometer
Optical density	Transmittance
Wavelength range	600 - 1050 nm , 1-nm intervals
Wavelength resolution	Approx 5 nm
Photocell	Linear array CCD, 2048 pixels
Thermocontroller	Peltier cooling system
Data processing computer	Ceelon 1.06GHz, RAM 394MB
A/D converter	12 bit
Spectrum data acquisition	Every 10 seconds

Table 2. Cows used in the experiment

Cow number	Date of birth	Date of latest calving	Calving times	Experimental date and time in 2003	Number of reference samples
263	Oct 01, 1998	Jan 05, 2003	3	Oct 20 20:22 Oct 20 22:40 Oct 21 7:11	9
281	Apr 28, 1997	Oct 20, 2002	4	Oct 20 19:00 Oct 21 3:49	9
297	Jan 01, 1999	Aug 09, 2003	3	Oct 20 15:59 Oct 21 5:11	11
300	Mar 14, 1999	Mar 08, 2003	3	Oct 20 20:08 Oct 21 6:41	17
301	Mar 18, 1999	Apr 09, 2003	3	Oct 20 21:32 Oct 21 8:05	12
304	Apr 27, 1999	Apr 16, 2003	3	Oct 21 1:12 Oct 21 8:40	15
310	Jun 25, 1999	Jul 08, 2003	3	Oct 20 15:38 Oct 20 23:06	9
311	Apr 10, 1999	Oct 08, 2003	3	Oct 21 5:39	5
312	May 18, 1999	Sep 07, 2003	3	Oct 20 14:45 Oct 20 22:24 Oct 21 6:10 Oct 21 8:16	16
320	Sep 02, 1999	Dec 18, 2002	2	Oct 20 19:11	7
322	Nov 04, 1999	May 24, 2003	2	Oct 20 20:46 Oct 21 7:02	13
325	Feb 19, 2000	Mar 03, 2003	2	Oct 20 20:29 Oct 21 5:50 Oct 21 8:46	9
326	Oct 29, 1999	Aug 07, 2003	2	Oct 20 19:47 Oct 21 6:00	20
331	Mar 03, 2000	Mar 03, 2003	2	Oct 21 6:52	8
333	Mar 23, 2000	Sep 02, 2003	2	Oct 20 20:57 Oct 21 4:58	19
334	Mar 27, 2000	May 26, 2003	2	Oct 21 1:35	7
344	Jul 25, 2000	Sep 13, 2003	2	Oct 20 15:08 Oct 20 22:08 Oct 21 4:09	30

Table 3. Validation statistics of the near-infrared spectroscopic sensing system for determination of milk quality

Milk quality items	Calibration					Validation					
	n1	nF	Range	r ²	SEC	n2	Range	r ²	SEP	Bias	Regression line
Fat(%)	144	10	1.01 - 7.39	0.96	0.24	72	0.94 - 6.19	0.95	0.25	-0.06	y = 0.97 x + 0.06
Lactose(%)	144	10	2.06 - 5.06	0.82	0.28	72	2.22 - 4.99	0.83	0.26	0.00	y = 0.99 x + 0.03
Protein(%)	144	12	2.77 - 4.38	0.78	0.15	72	2.91 - 4.32	0.72	0.15	0.00	y = 0.89 x + 0.39
SCC (logSCC/mL)	144	13	3.74 - 5.84	0.64	0.33	72	3.82 - 5.88	0.68	0.28	-0.03	y = 0.97 x + 0.10
MUN(mg/dL)	98	8	10.41 - 15.73	0.31	1.68	49	11.07 - 15.58	0.53	1.50	-0.09	y = 1.44 x - 5.79

n1: total number of calibration samples. n2: number of validation samples. nF: number of factor r²: coefficient of determination. SEC: standard error of calibration SEP: standard error of prediction. Regression line: regression line from predicted value (x) to reference value (y).