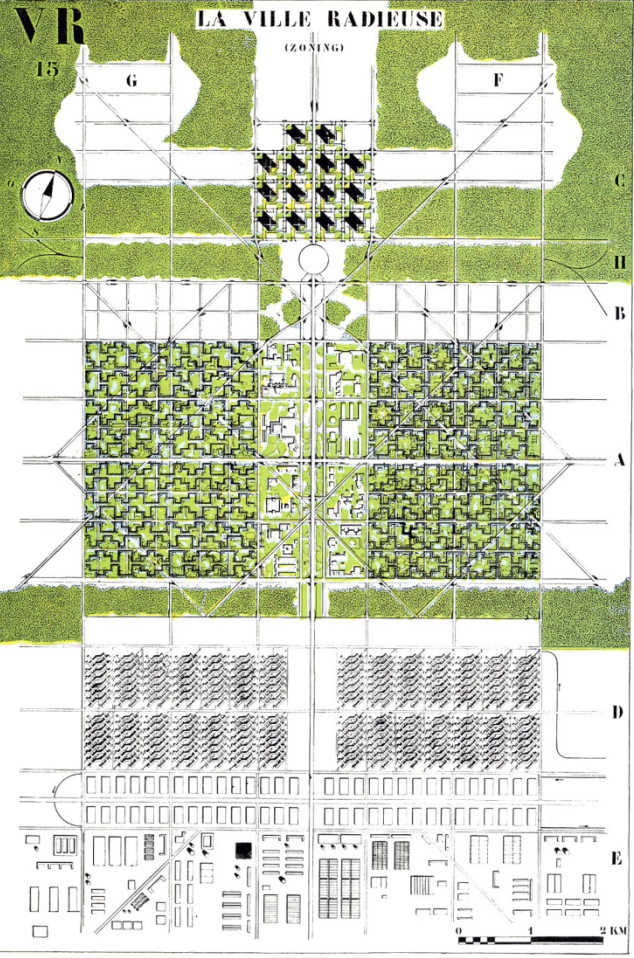


“Satellite leisure in linear natural reserves”,
a planning model for
tourism resorts.

Learnings from the
GATCPAC Resting City

Roger Sauquet
Universitat Politècnica de
Catalunya



Villes satellites, par ex.:
siège du gouvernement
ou centre de études so-
ciales, etc.

La cité d'affaires:

La gare et l'aérogare.

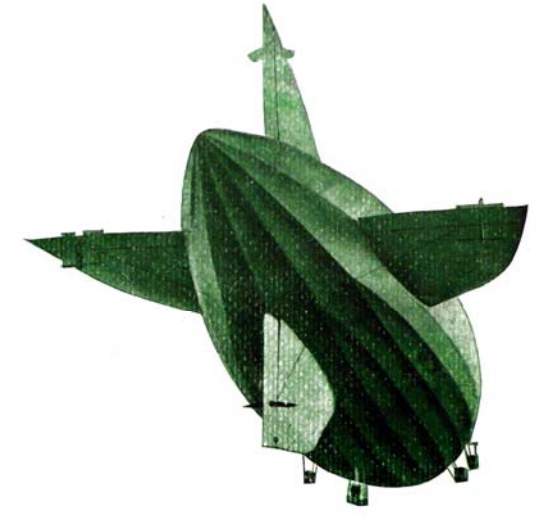
Les hôtels.
Les ambassades.

L'habitation.

Les manufactures.

Les entrepôts généraux.

L'industrie lourde.

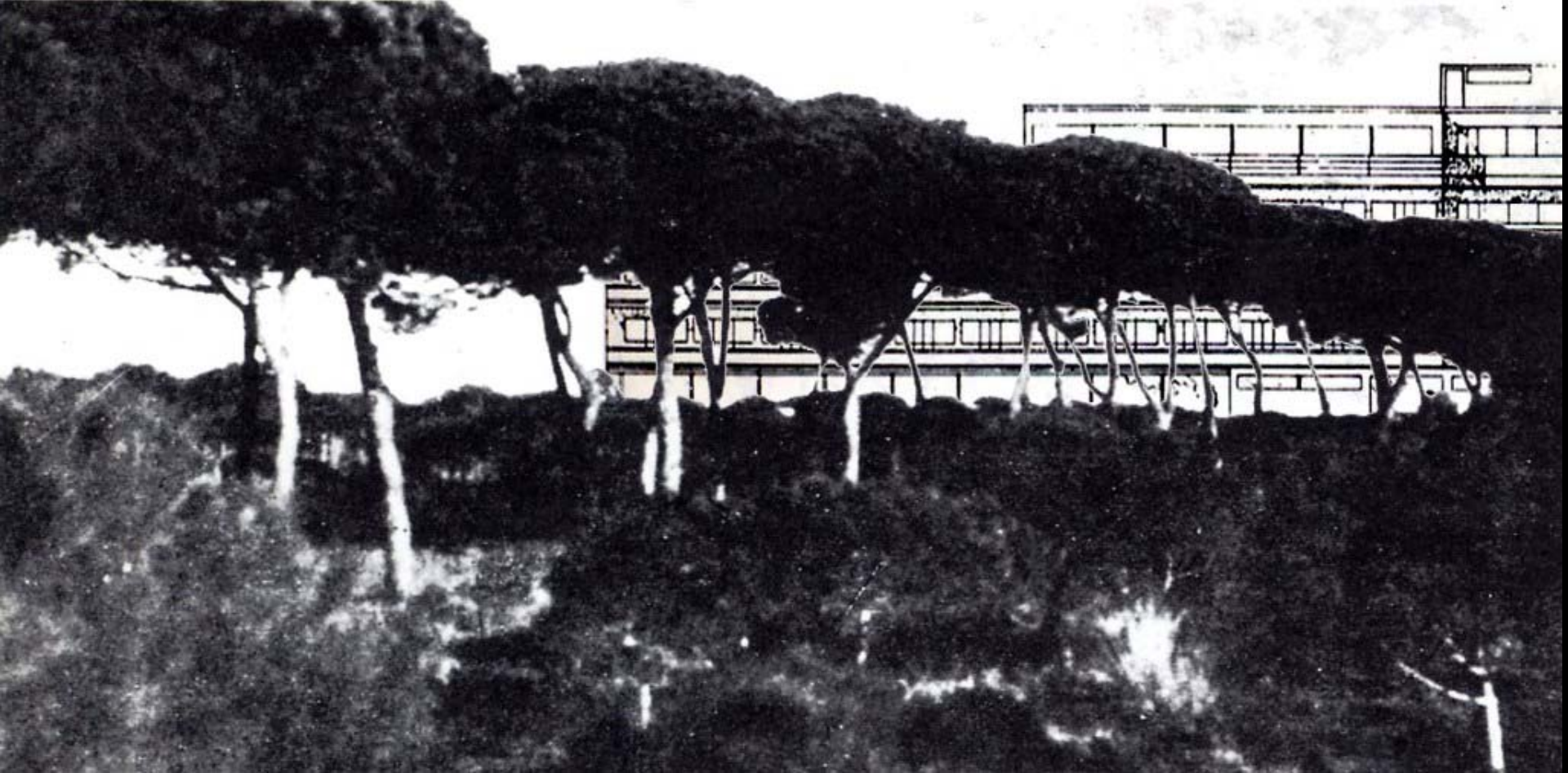


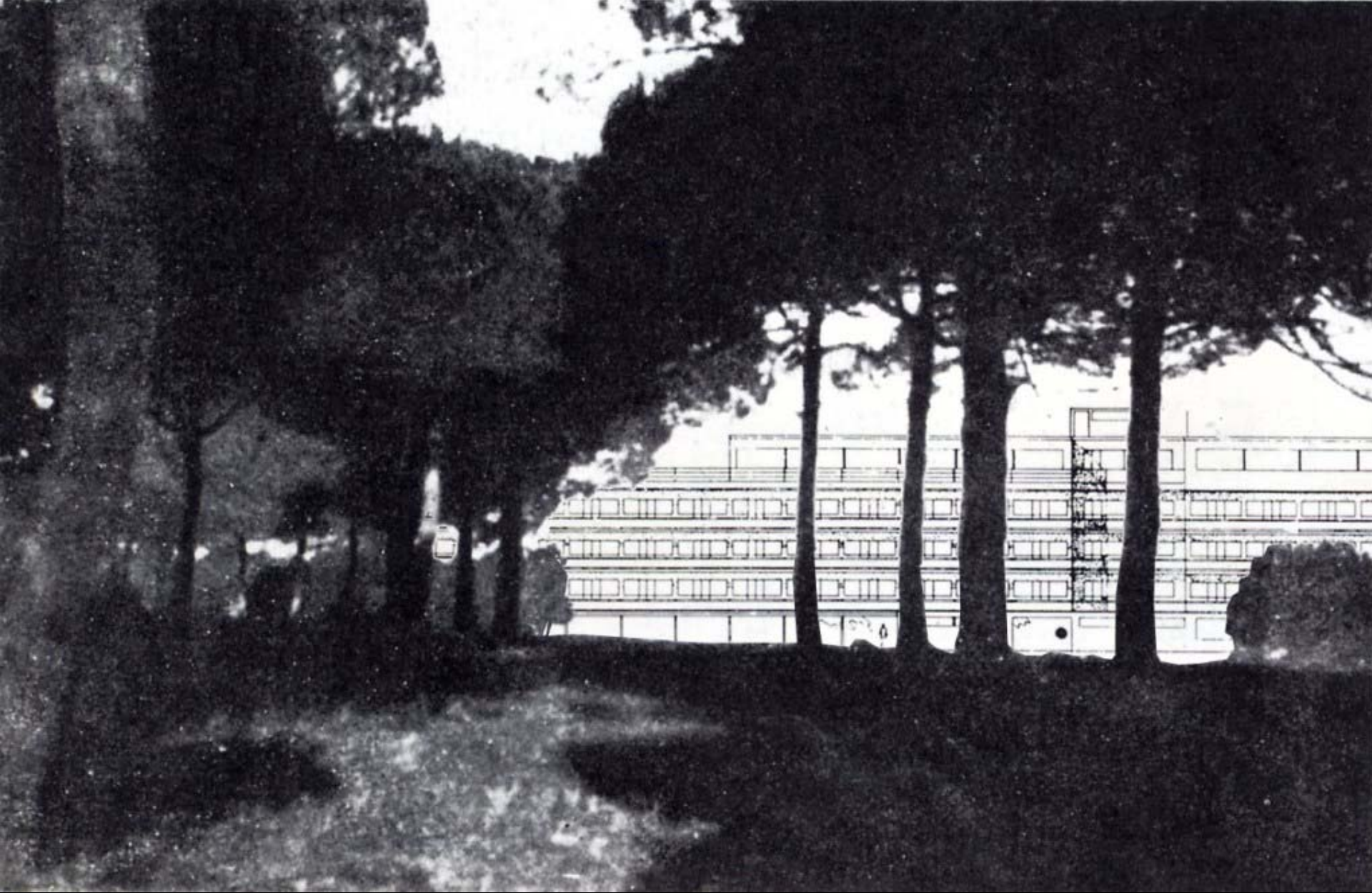
**за советское
мощное
дирижаблестроение**

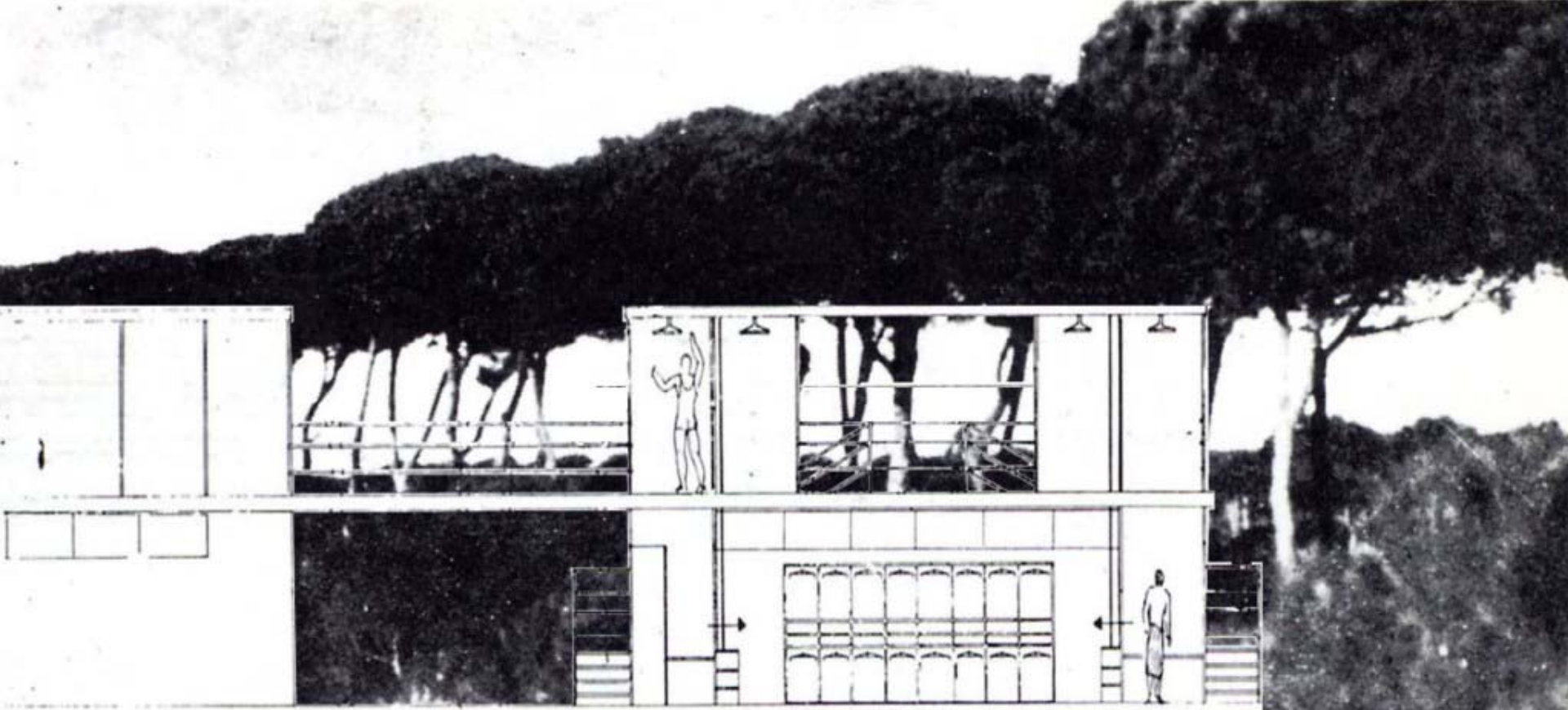


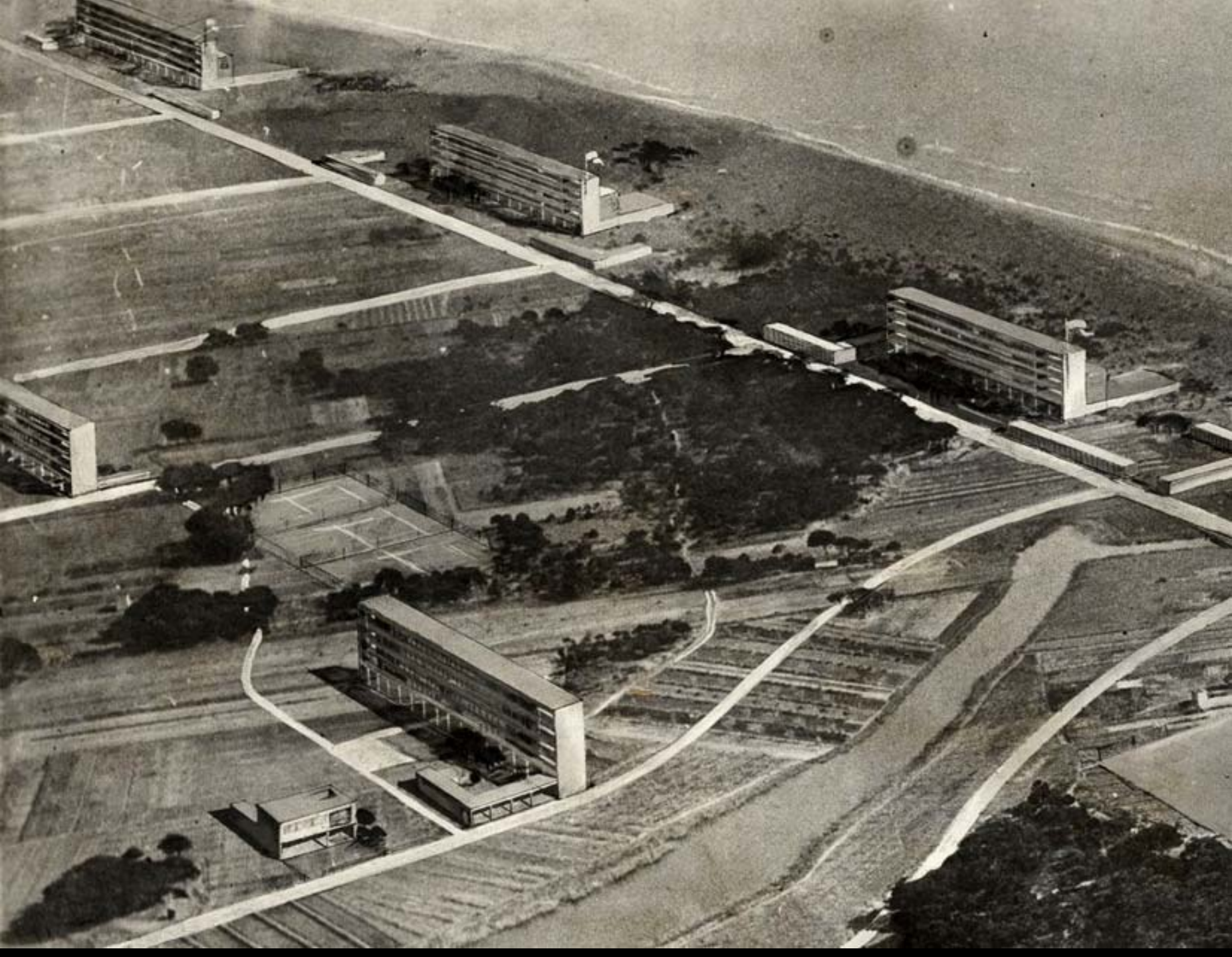


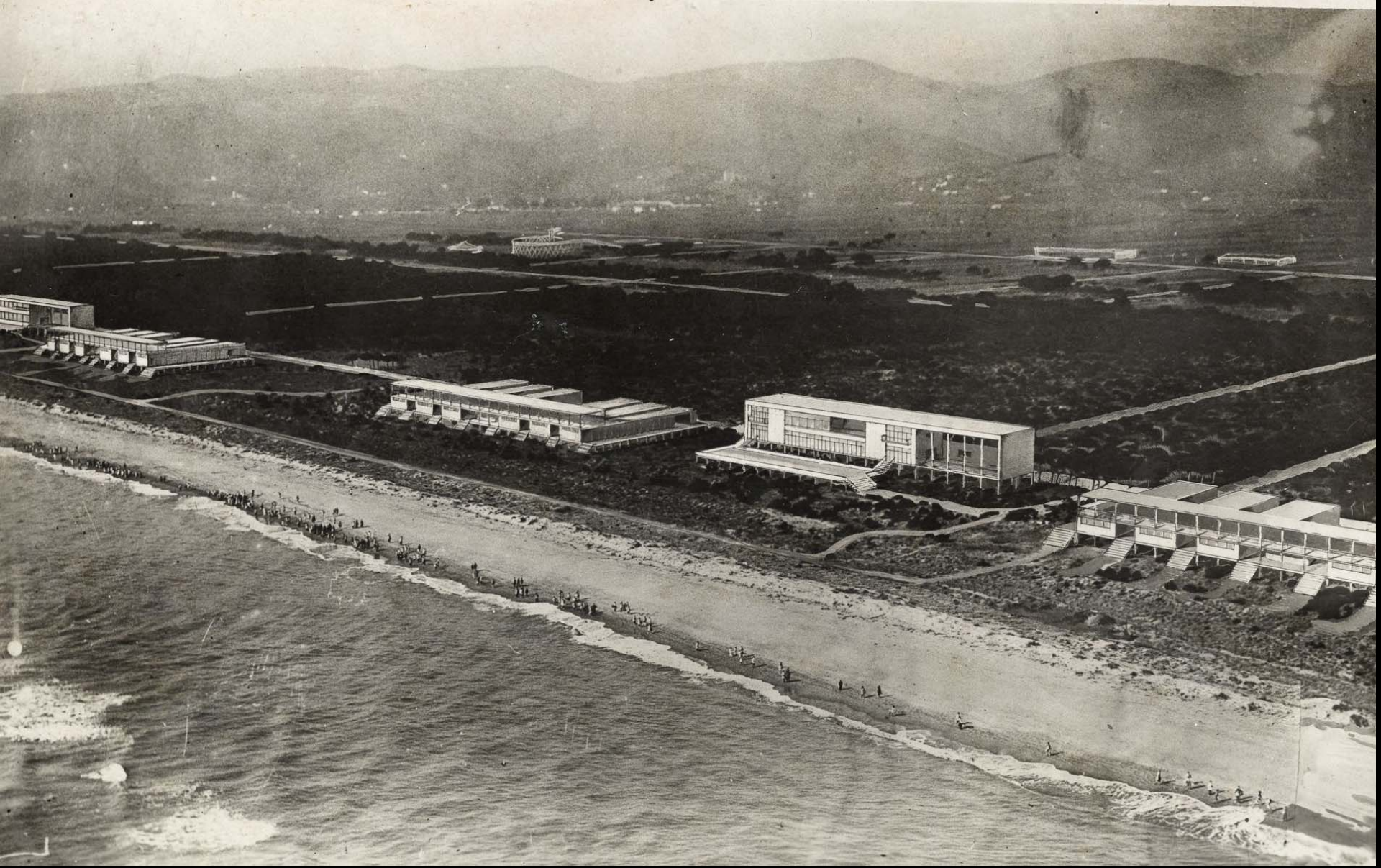












LA CIUTAT DE REPOS I DE VACANCES

SOCIETAT COOPERATIVA POPULAR • ENTITAT D'INTERES PÚBLIC

Carnet d'identitat

a favor del soci Nº 2

En JOSEP TORRES CLAVE

ingressat 1 gener 1934

Barcelona 17^{te} juliol del 1936

EL PRESIDENT,



SIGNATURA,

NOTA. - Aquest carnet no tindrà cap valor si no va acompanyat del rebut del mes corrent.

“LAWS”

Natural landscape as a guideline

Existing vegetation maintenance

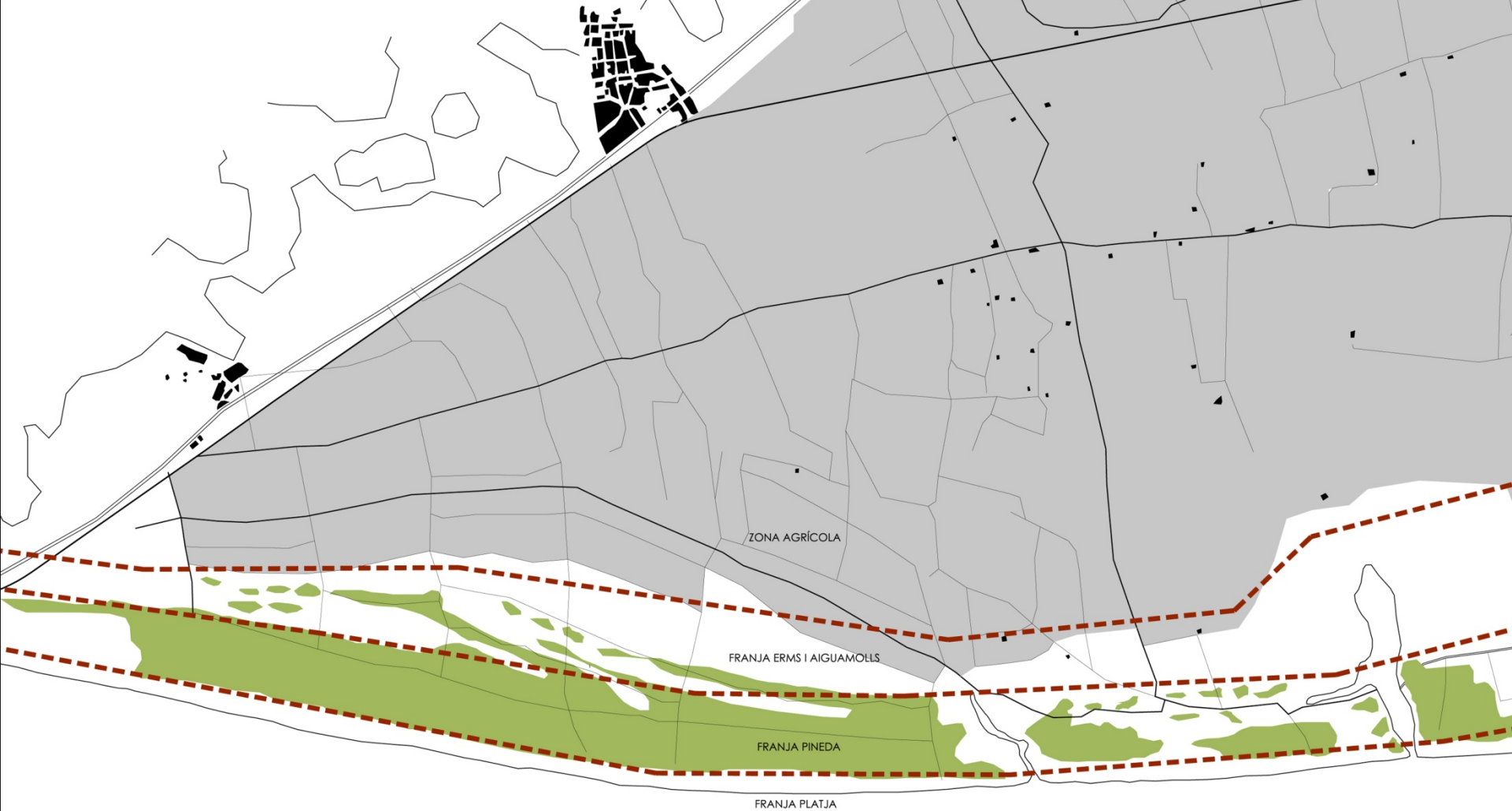
Minimum construction

Unoccupied space management

Minimum urbanization

No plotting

Agricultural belt



ZONA AGRÍCOLA

FRANJA ERMS I AIGUAMOLLS

FRANJA PINEDA

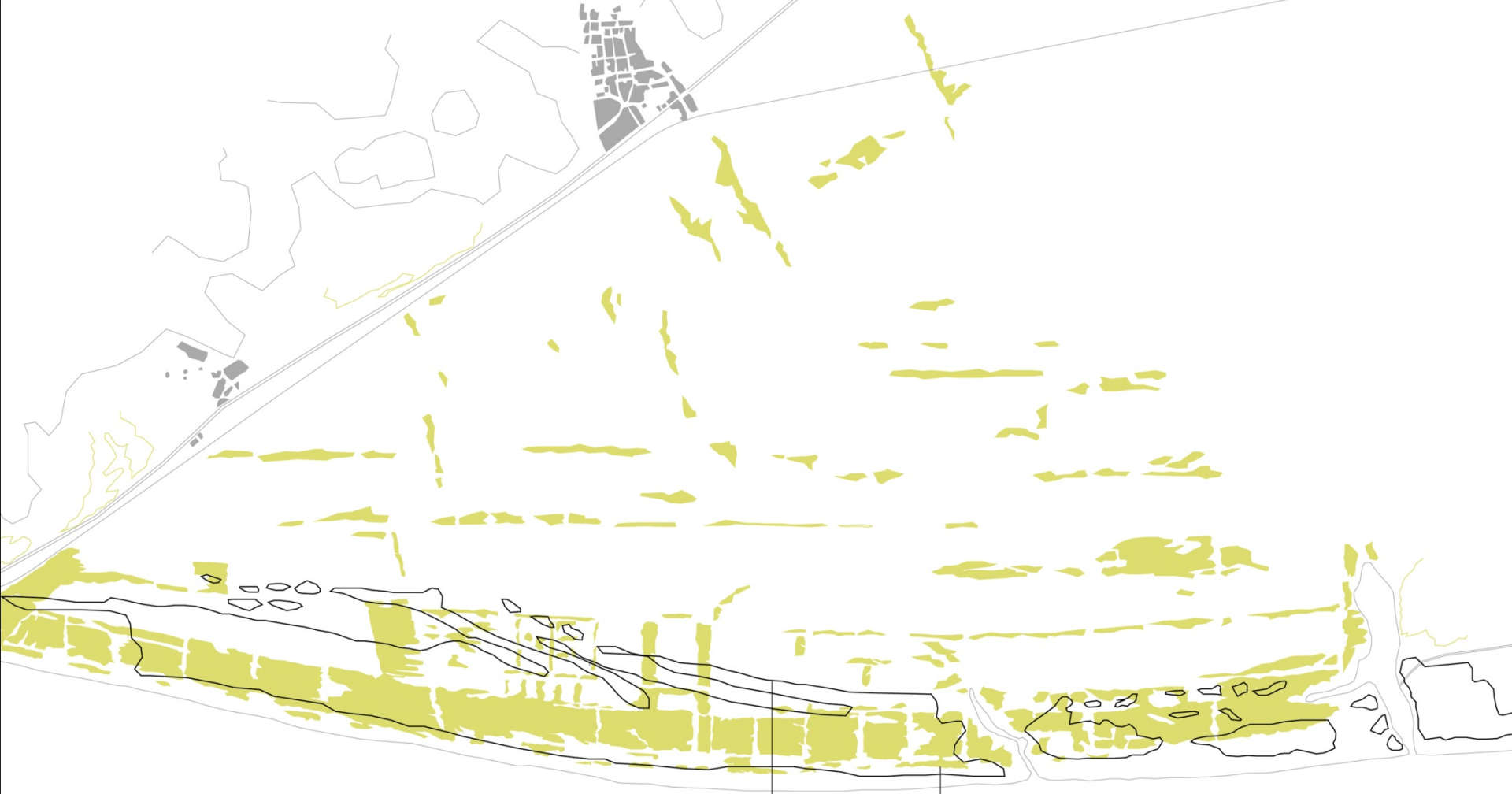
FRANJA PLATJA



500 m 1km



500 m 1km

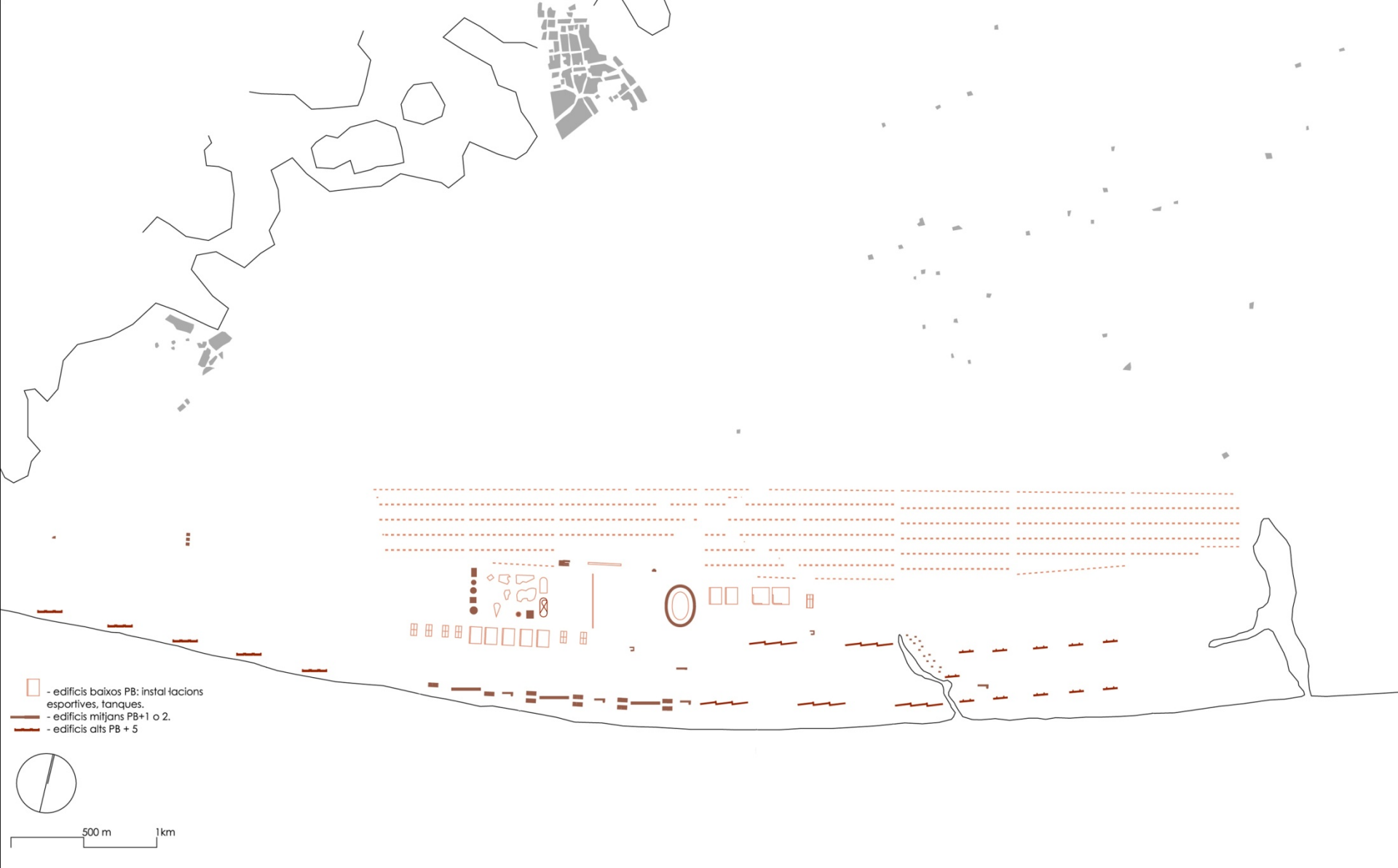


PINEDA: extensió real
segons estudis de 1934

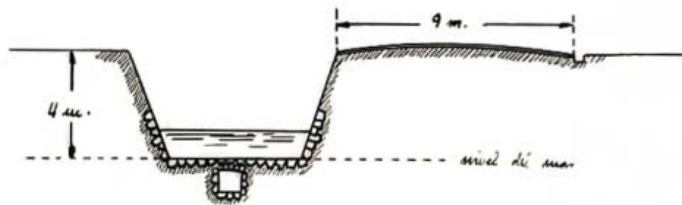
PINEDA: ubicació de
l'arbrat segons el projecte
de 1932 / 1933



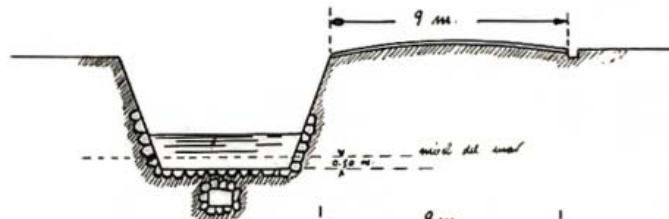
500 m 1km



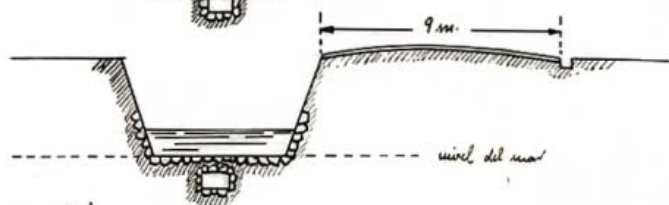
Sección A-A'



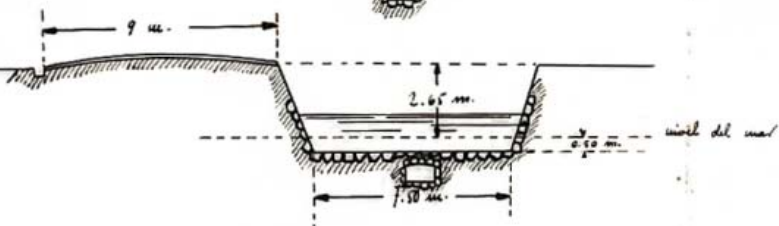
Sección B-B'



Sección C-C'



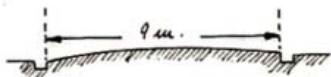
Sección D-D'



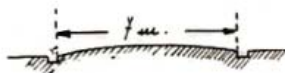
Sección E-E'



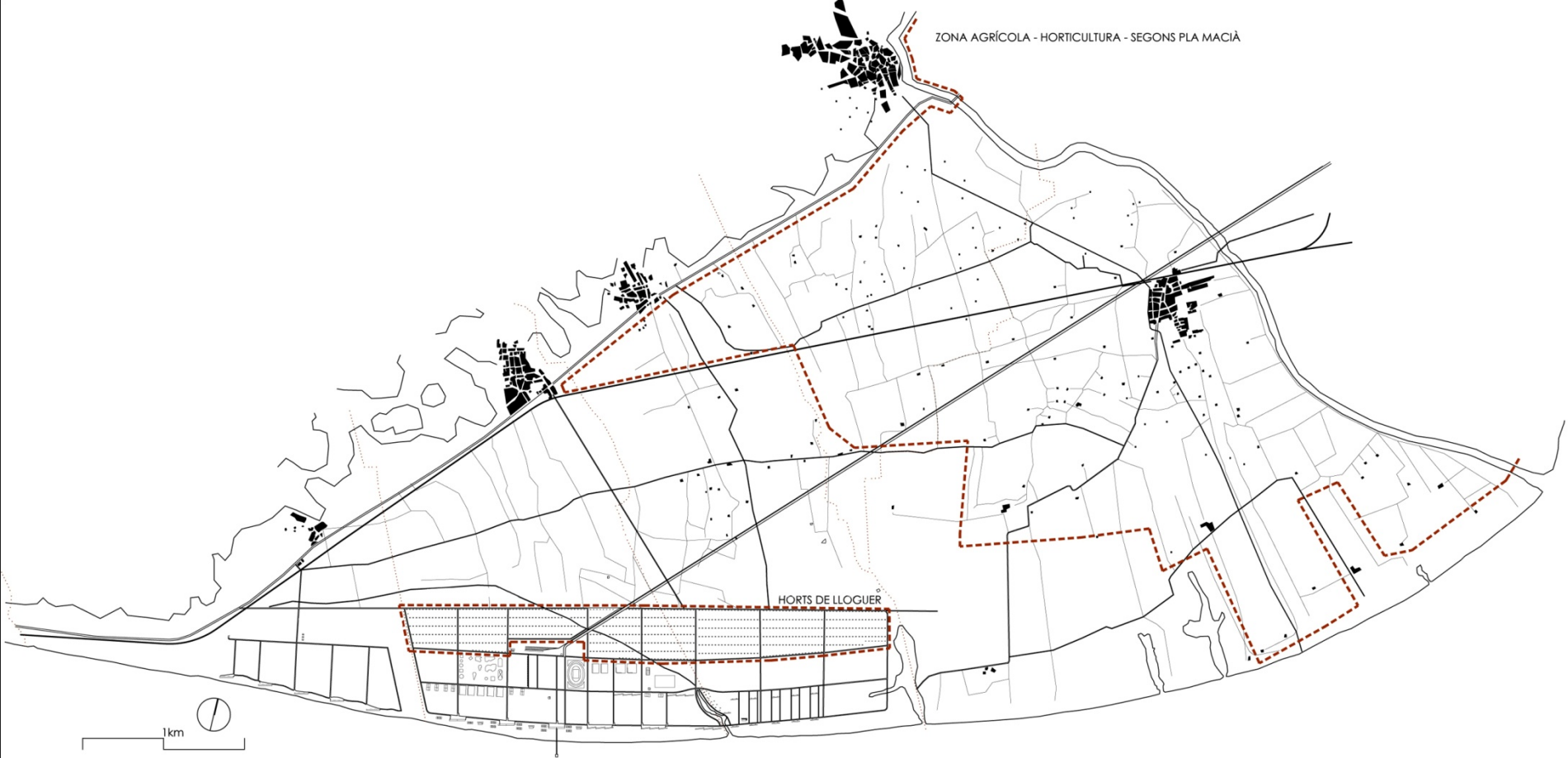
Sección F-F'



Sección G-G'



ZONA AGRÍCOLA - HORTICULTURA - SEGONS PLA MACIÀ



OBJECTIVES

To qualify resting areas promoting a closer contact between citizens and nature

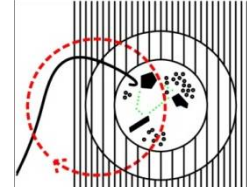
To preserve the landscape

To provide cities with a nearby venue for holidays (interior tourism)

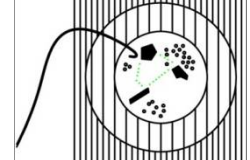
To bring the rural and urban realities and activities closer

To promote the values of cooperation and coexistence

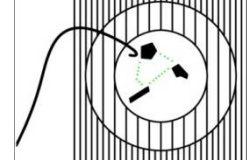
landscape preservation



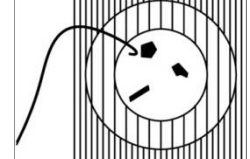
agricultural surroundings



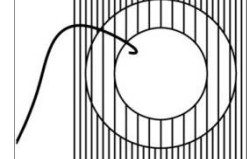
satellite settlement



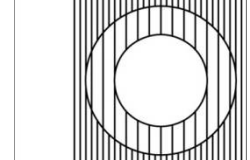
building permeability



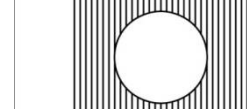
minimum urbanization

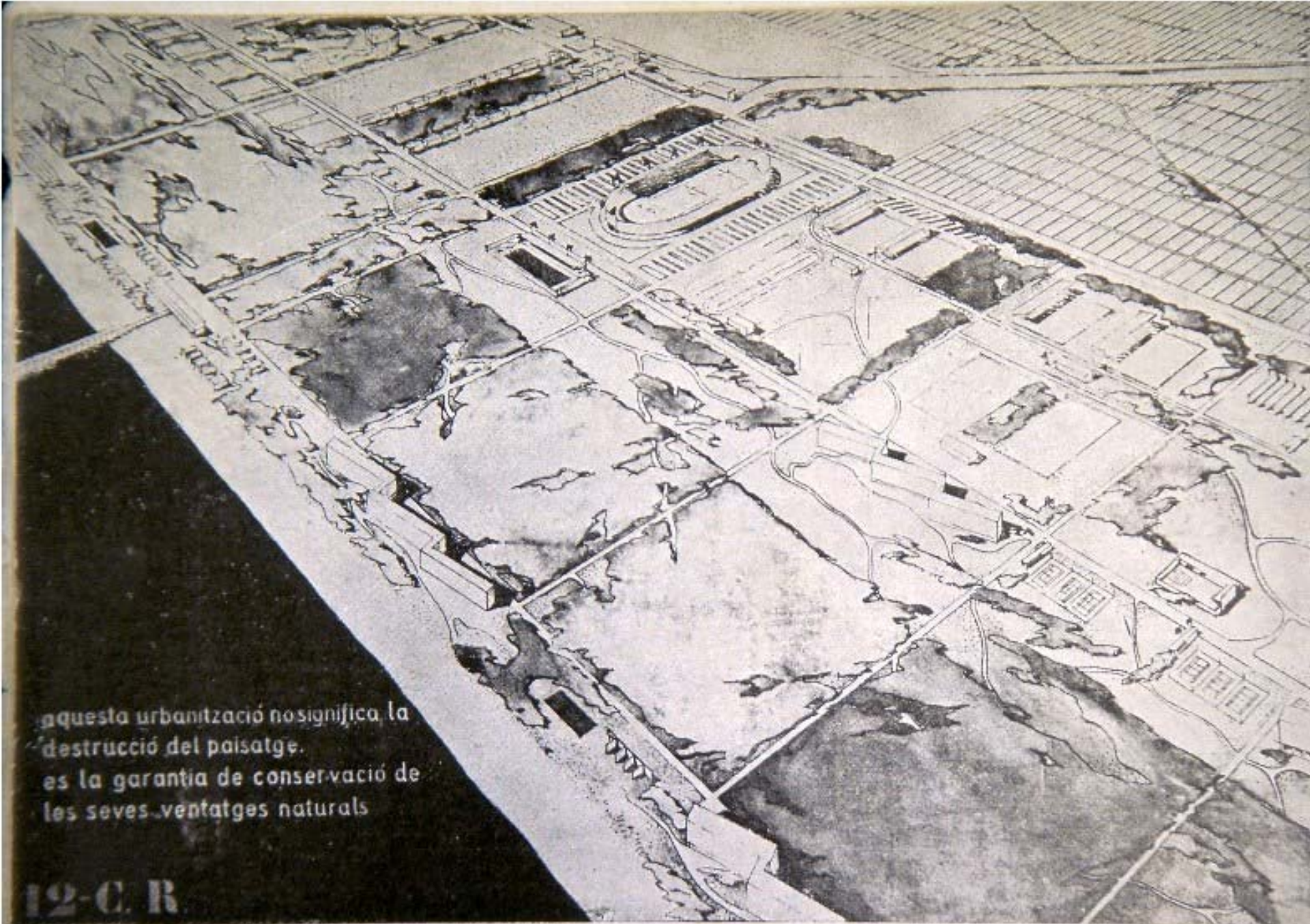


ephemeral architecture



rotation

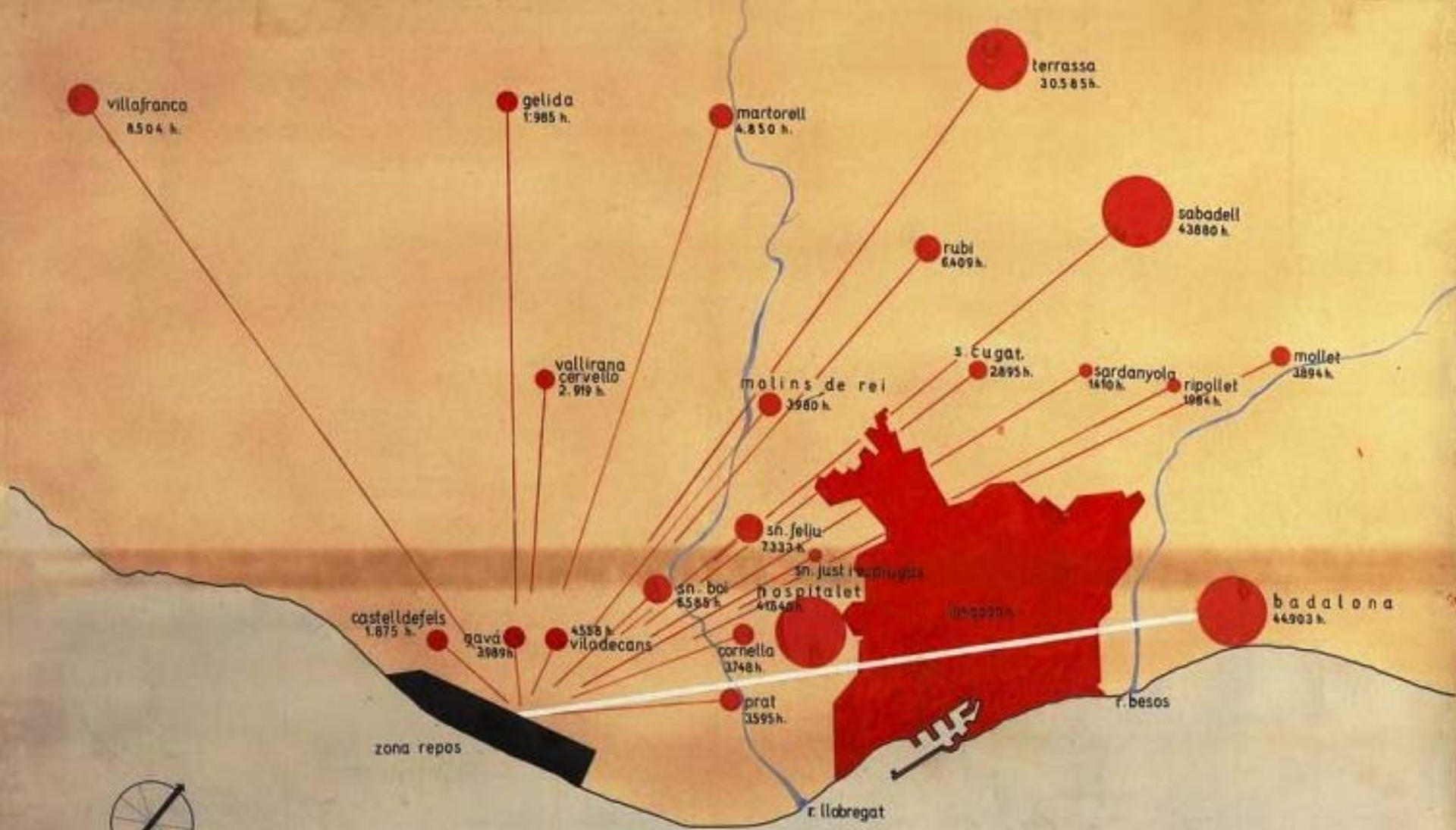




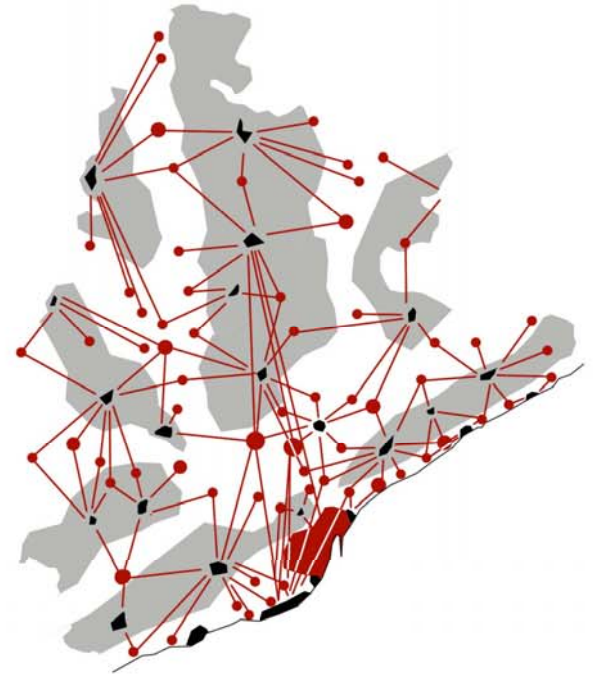
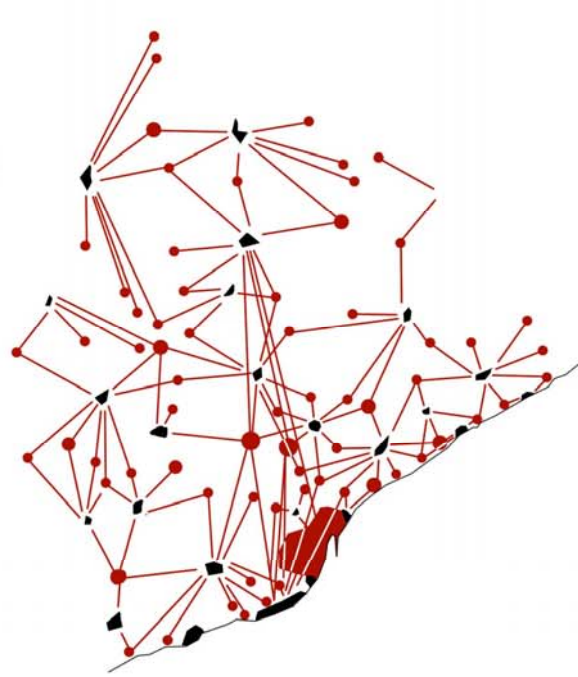
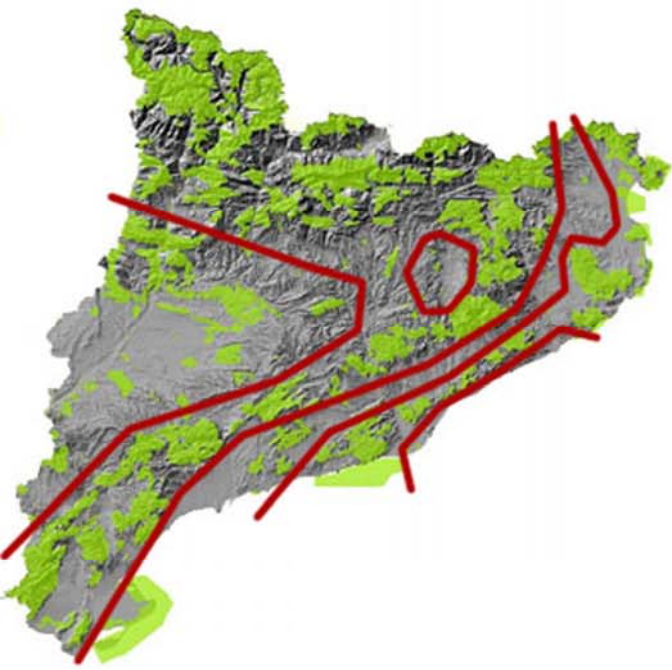
«Aquesta urbanització no significa la destrucció del paisatge, és la garantia de conservació de les seves ventatges naturals»

12-C. R

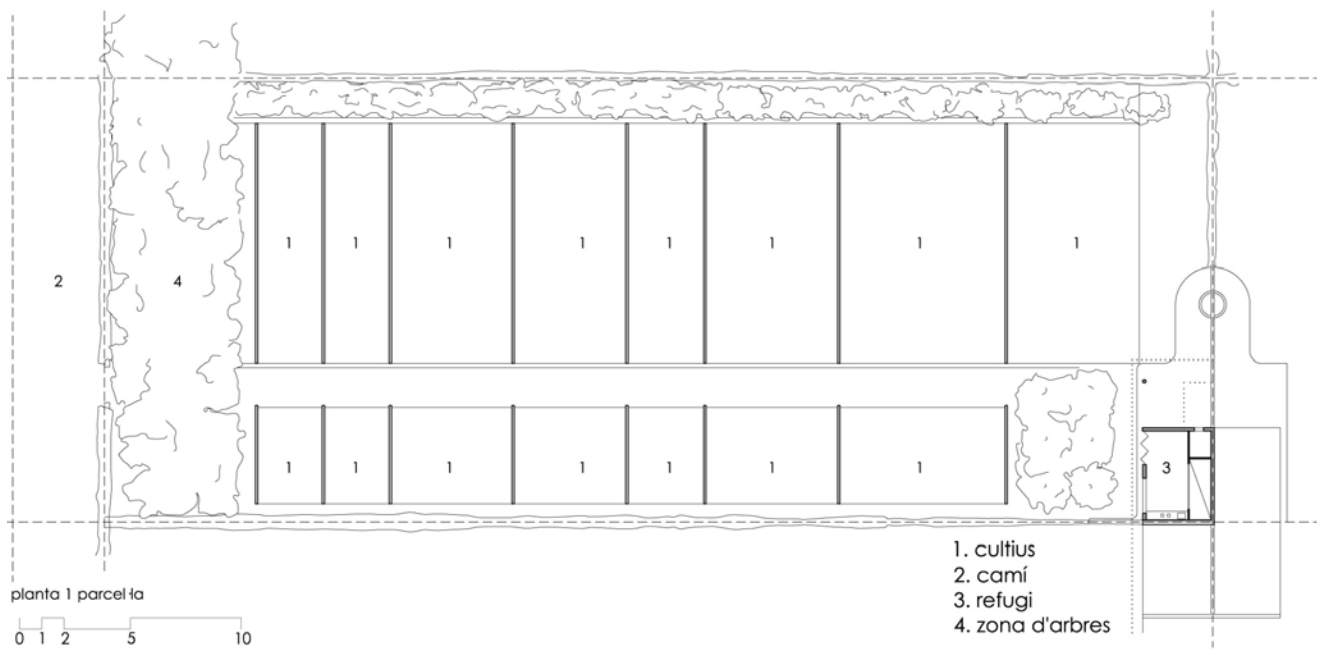




5 - C. R. LA ZONA D' INFLUENCIA









shared wheels



Share it

A black and white photograph showing several hands stacked together, holding a small white model of a house. The word "house" is overlaid in white text at the top, and the word "share" is overlaid in white text at the bottom.

house

share

