

# We are IntechOpen, the world's leading publisher of Open Access books Built by scientists, for scientists

5,300

Open access books available

130,000

International authors and editors

155M

Downloads

Our authors are among the

154

Countries delivered to

TOP 1%

most cited scientists

12.2%

Contributors from top 500 universities



WEB OF SCIENCE™

Selection of our books indexed in the Book Citation Index  
in Web of Science™ Core Collection (BKCI)

Interested in publishing with us?  
Contact [book.department@intechopen.com](mailto:book.department@intechopen.com)

Numbers displayed above are based on latest data collected.

For more information visit [www.intechopen.com](http://www.intechopen.com)



# Basics and Essentials of Medical Devices Safety Surveillance

*Vivekanandan Kalaiselven, Shatrunajay Shukla,  
Nikita Mishra and Pawan Kumar*

## Abstract

Medical devices are being used in healthcare facilities for diagnosis, monitoring, prevention and treatment of an array of diseases. To ensure user/patient safety associated with the medical devices being used in healthcare industry, it is of utmost importance to closely monitor the adverse events associated with the medical devices through a robust, sustainable and scaled surveillance. Materiovigilance Programme of India (MvPI) provides a reliable system to report adverse events associated with medical devices. Under MvPI, various modalities to report adverse events associated with medical devices have been developed. These modalities include an editable medical device adverse event reporting form, a toll-free helpline number and a field safety corrective action form (FSCA). FSCA form is used to notify the regulatory authority and healthcare professionals on corrective actions or recall by the manufacturer. Due to the emergence of the Coronavirus disease 2019 (COVID-19) pandemic, one-page editable form has been developed to boost the adverse event reporting of Personal Protective Equipments (PPEs). MvPI also coordinates with healthcare facilities and medical device industries across the country for reporting the medical device-related adverse events. The collected scientific data is utilized to develop regulatory policies and enhance measures to ensure the quality of medical devices. All the healthcare workers are, therefore, encouraged to report adverse events to MvPI. This chapter aims to describe the systems, procedures and modalities available for the reporting of Medical Device Adverse Events (MDAEs) in India, in order to intensify the nature of reporting and creating an environment that encourages the public to perform MDAE reporting.

**Keywords:** Adverse event, COVID-19, Materiovigilance Programme of India, Personal Protective Equipments, Causality assessment, Medical device

## 1. Introduction

Over the last years, medical devices have been playing a pivotal role in the diagnosis and management of a variety of diseases [1]. With the advancement in the technology and increased public demand for high quality medical care, the global medical device industry has surpassed USD 350 billion in annual revenue, and in India a growth rate of 20% has been seen in healthcare industry. These devices have also created substantial risks to the patients with high profile recalls [2]. Nearly 5,000 individual classes of medical devices, tens of thousands of medical device

suppliers, and millions of healthcare providers exist worldwide, which clearly depicts that device-related issues are likely to occur. The outcome of an adverse event related to medical devices can be serious and result in illness, injury or even death, which have led experts to call for the monitoring of the safe and effective use of medical devices after its regulatory approval [3].

Materiovigilance Programme of India (MvPI) was launched in 2015 and has implemented a robust system to ensure the safety of medical devices. The aim of this programme is to identify the adverse events associated with the use of medical devices and to eliminate the device-related risks through a systematic reporting system [4]. In India, the Medical Devices Rules (MDR) were notified on January 31st, 2017 and became effective from January 1st, 2018. As per the MDR, G.S.R. 78 (E), Chapter 4, Section 26 (ii) “the License Holder shall inform the State Licensing Authority (SLA) or Central Licensing Authority (CLA), as the case may be of the occurrence of any suspected unexpected serious adverse events and take necessary action thereon, including any recall within 15 days of such event coming to the notice of License Holder” [5] (**Table 1**). The MDR, in concurrence with MvPI, has significantly influenced the post marketing surveillance of medical devices among the healthcare professionals, by ensuring their quality and patient/user safety [5]. This chapter aims to describe the systems, procedures and modalities available for the reporting of Medical Device Adverse Events (MDAEs) in India, in order to intensify the nature of reporting and creating an environment that encourages the public to perform MDAE reporting.

Reporter	What to report?	To Whom?	When?
Marketing Authorisation Holders (MAH)/Manufacturers/ Importers/Distributors	Any suspected unexpected serious adverse event incident, such as deaths, serious injuries, malfunction, etc., together with the action taken thereon, including any recall	National Regulatory body National Coordination Centre (NCC) – Indian Pharmacopeia Commission (IPC)	Within 15 calendar days after becoming aware of an event.
Healthcare professionals	Death, serious injuries, malfunction, etc.	National Regulatory body National Coordination Centre (NCC) – Indian Pharmacopeia Commission (IPC) Marketing Authorisation Holders (MAHs)	For serious events, the reporting has to be done within 15 calendar days after becoming aware of an event. For non-serious events, the reporting has to be done within 30 calendar days after becoming aware of an event.

**Table 1.**  
*Mandatory reporting requirements.*

## **2. MvPI Focus Groups for MDAE reporting**

The following groups play a significant role in the smooth functioning of MvPI:

### **2.1 Medical Device Adverse Event Monitoring Centres (MDMCs) and Adverse Drug Reactions Monitoring Centres (AMCs)**

Healthcare facilities, including district/government/private hospitals, and autonomous bodies are recognized as MDMCs and AMCs by the NCC-MvPI, IPC and NCC-PvPI, IPC respectively. The function of the MDMC is to raise awareness about the programme and reporting of MDAEs. The MvPI collects reports from the MDMCs, AMCs. Under the MvPI, 50 MDMCs have been identified so far in India to collect the report of the events associated with the use of medical devices [6]. The AMCs established under the Pharmacovigilance Programme of India (PvPI) are also participating in MDAE reporting. Around 311 centres have been identified in the country to report the adverse events resulting from the use of drugs/medical products [7].

### **2.2 Medical device industries**

Medical device industries, including manufacturers, importers, distributors, etc., are approached and encouraged to report the MDAE, particularly with their own medical devices. As there may be chances of re-occurrences of the adverse events, medical device industries play a key role in medical device safety surveillance [8].

### **2.3 Healthcare professionals**

Healthcare facilities include healthcare professionals, such as clinical specialists, biomedical engineers, nurses, pharmacists, hospital technology managers, and technicians, as well as patients. Healthcare professionals are in direct contact both with the patients and the medical devices used in the healthcare facilities, and are hence the key personnel in MDAE reporting [9].

### **2.4 Accreditation bodies**

Accreditation bodies essentially identify the capability of the hospitals to deliver quality care. Indian healthcare institutions get accreditation from bodies such as the National Accreditation Board for Hospitals and Healthcare providers (NABH). The IPC has signed a Memorandum of Understanding (MoU) with the NABH, under the Quality Council of India (QCI), to ensure for total cooperation of the hospitals on the reporting of adverse events associated with medical devices in the hospital [10].

## **3. Modalities for MDAE reporting**

The NCC for MvPI, IPC has developed the below-mentioned reporting tools to collect MDAEs. All the reporting tools are available on the IPC website. The healthcare professionals, MAHs and all the Personal Protective Equipments (PPEs) users are encouraged to report adverse events associated with medical devices [11].

### **3.1 MDAE reporting form**

The MDAE reporting form primarily aims to collect the adverse events associated with the use of medical devices, *In-Vitro* Diagnostics (IVDs), and medical equipments. The healthcare professionals and others including, but not limited to, manufacturers, importers, distributors, and hospital managers are solicited to report the adverse events for known, unknown, serious, non-serious, frequent or rare adverse events. The MDAE reporting form assembles adverse event information associated with medical devices and consists of the following nine sections (**Figure 1**) [11].

#### *3.1.1 General information*

This section includes the date of report, *i.e.* the date in which the report was filled, and the type of report that specifies whether the event is Initial/Follow-up/Final/Trend. The initial report is the first event notification report which may include the minimal required information, for instance, device information, details of adverse event and reporter details. A report may be marked as a follow-up report when additional information is available from the previously reported event. The report may be submitted as a final report when all the information associated with the event is available and collected. If the reporter is observing a significant number of similar adverse events, the reporter may tick the trend option [12].

#### *3.1.2 Reporter details*

This section comprises the type of reporter, along with the details of the reporter, including name, address, contact number and e-mail address. A reporter may be a manufacturer, importer, distributor, healthcare professional, patient, or other. The information provided in this section is kept confidential and only utilised for further follow-up.

#### *3.1.3 Device category*

This section refers to the general information about the medical device used. The device category section in the MDAE reporting form consists of three subsections, namely medical device, medical equipment and IVDs. The medical equipment and IVDs subsections refer to specific categories of medical devices. Medical devices requiring calibration, maintenance, repair, user training and decommissioning – are usually managed by clinical engineers. Medical equipment is used for the specific purposes of diagnosis and treatment of disease or rehabilitation following disease or injury. It can be used either alone or in combination with any accessory, consumable or other piece of medical equipment. Medical equipment excludes implantable, disposable or single-use medical devices. The IVD medical devices includes a medical device, used either alone or in combination, intended by the manufacturer for the *in-vitro* examination of specimens derived from the human body solely or principally to provide information for diagnostic, monitoring or compatibility purposes. All the other devices not covered under the definitions of medical equipments and IVDs should be included into the medical device subsection.

#### *3.1.4 Device description*

This section describes the specific details of the suspected medical device: device name or the brand name used for marketing of the device, manufacturing or import firm name and address, the information of local distributor, the lot/batch number,



Version-1.1

### MEDICAL DEVICE ADVERSE EVENT REPORTING FORM

Materiovigilance Programme of India (MvPI)

This form is intended to collect information on Medical Device Adverse Event in India. This form is designed to be used voluntarily by Manufacturer/Importer/Distributor of Medical Device, Healthcare Professionals and anyone with direct/indirect knowledge of Medical Device Adverse Event.

#### General Information

1. Date of Report : \_\_\_\_\_

2. Type of Report : Initial  Follow up  Final  Trend

3. Reporter Reference for MDMC only : Centre : \_\_\_\_\_ Location : \_\_\_\_\_ Month-Year : \_\_\_\_\_ Case No. : \_\_\_\_\_

#### Reporter Details

1. Type of Reporter : (a) Manufacturer  (b) Importer  (c) Distributor  (d) Healthcare Professional   
 (e) Patient  (f) Others  specify \_\_\_\_\_

2. In case, where the reporter is not manufacturer, fill the following details:-  
 (a) Has the reporter informed the incident to the manufacturer?  
 Yes  No   
 (b) Is the reporter also submitting the report on behalf of the manufacturer?  
 Yes  No

3. Reporter contact information:  
 a) Name : \_\_\_\_\_  
 b) Address : \_\_\_\_\_  
 c) Tel./Mobile : \_\_\_\_\_  
 d) Email : \_\_\_\_\_

#### Device Category

Medical Device	In Vitro Diagnostics (IVD)	Medical Equipments / Machines
I. Therapeutic <input type="checkbox"/> Diagnostic <input type="checkbox"/> Both <input type="checkbox"/> Preventive <input type="checkbox"/>	I. Kits <input type="checkbox"/> II. Reagents <input type="checkbox"/> III. Calibrator <input type="checkbox"/>	I. Therapeutic <input type="checkbox"/> Diagnostic <input type="checkbox"/> II. Therapeutic & Diagnostic <input type="checkbox"/> III. Preventive <input type="checkbox"/>
II. Implantable device <input type="checkbox"/> Non-implantable device <input type="checkbox"/>	IV. Control Material <input type="checkbox"/> V. Others <input type="checkbox"/>	IV. Assistive <input type="checkbox"/> V. Imaging <input type="checkbox"/>
III. Invasive <input type="checkbox"/> Non-invasive <input type="checkbox"/>	VI. IVD electronic reader/ Analyzer <input type="checkbox"/>	VI. Invasive <input type="checkbox"/> Non-invasive <input type="checkbox"/>
IV. Single use device <input type="checkbox"/> Reusable device <input type="checkbox"/>		VII. Others <input type="checkbox"/>
Reasons of manufacture marked: Single use devices <input type="checkbox"/>		
V. Sterile <input type="checkbox"/> Non Sterile <input type="checkbox"/>		
VI. Personal use / Homecare use <input type="checkbox"/>		

**Instructions for use Section A-F**  
 • If Medical Devices/Equipments/Machines : Please fill all the sections i.e. A, B, C, D, E & F  
 • If In Vitro Diagnostic (IVD) : Please fill sections i.e. A (except 6, 7, 8, 12, 14 & 16), B (except 1, 2, 4 & 6), D, E, & F

#### (B) Event Description

1. Date of Event / Near miss incident: \_\_\_\_\_

2. Date of Implant/Explant (if applicable): \_\_\_\_\_

3. Location of Event:  
 Hospital Premise  Manufacturer/Distributor premise   
 Home  Others

4. Device Operator:-  
 Healthcare Professional  Patient  Others

Problem noted prior to use/near miss event

5. Device disposition / Current location:  
 a) Returned to company  If yes, date \_\_\_\_\_  
 b) Remains implanted in patient   
 c) Within the healthcare facility   
 d) At patient home   
 e) Destroyed   
 f) Others (specify)

6. Is device in use after incidence : Yes  No

7. Serious event:   
 If serious, Tick the appropriate reason  
 a) Death (DD/MM/YY)  \_\_\_\_\_  
 b) Life Threatening   
 c) Disability or permanent damage   
 d) Hospitalization   
 e) Congenital anomaly/birth defect   
 f) Any other serious (Imp. medical event)   
 g) Required intervention to prevent / permanent Impairment / damage device   
 8. Non serious event:

9. Whether other medical devices were used at same time with above device if yes, please specify name(s)/use(s) \_\_\_\_\_

#### 10. Detail description of Event:-

\_\_\_\_\_

Continue on Page 5

For manufacturer/authorized representative use only				
Year	No. of Similar Adverse Events	Total No. Supplied	Frequency of Occurrence (%)	
11. Frequency of occurrence of similar Adverse Event in India in past 3 years				
12. Frequency of occurrence of similar Adverse Event in globally in past 3 years				

#### (C) Patient Information, History & Outcome

1. Patient Hospital ID : \_\_\_\_\_

2. Patient Initial : \_\_\_\_\_

3. Age : \_\_\_\_\_

4. Gender : Male  Female  Others

5. Weight : \_\_\_\_\_

6. Other relevant history, including pre-existing medical conditions \_\_\_\_\_

7. Patient Outcomes:  
 a) Recovered Date (DD/MM/YY)  \_\_\_\_\_  
 b) Not yet recovered   
 c) Death (DD/MM/YY)  \_\_\_\_\_  
 d) Others   
 Please specify \_\_\_\_\_

#### (A) Device Details

**Device Name / Trade Name / Brand Name:**

Details	Name	Address
Manufacturer		
Importer		
Distributor		

1. a) Is the device notified/regulated in India : Yes  No   
 b) Device Risk Classification as per India MDR 2017 : A  B  C  D

2. License No. (Manufacture/Import) : \_\_\_\_\_

3. Catalogue No. : \_\_\_\_\_

4. Model No. : \_\_\_\_\_

5. Lot / Batch No. : \_\_\_\_\_

6. Serial No. : \_\_\_\_\_

7. Software Version : \_\_\_\_\_

8. Associated Devices / Accessories : \_\_\_\_\_

9. Nomenclature Code if applicable; GMDN/UMDNS : \_\_\_\_\_

10. UDI No. (If applicable) : \_\_\_\_\_

11. Installation Date : \_\_\_\_\_

12. Expiration Date : \_\_\_\_\_

13. Last preventive maintenance date (dd/mm/yyyy) : \_\_\_\_\_

14. Last calibration date (dd/mm/yyyy) : \_\_\_\_\_

15. Year of manufacturing : \_\_\_\_\_

16. How long was device/Equipment/Machine in use : \_\_\_\_\_

17. Availability of device for evaluation : Yes  No   
 If no, was the device destroyed  Still in use  return to manufacturer or importer/distributor

18. Is the usage of device as per manufacturer claim/Instruction for use/user manual: Yes  No   
 If no specify usage \_\_\_\_\_

19. For devices not regulated / notified in India : Regulator / Regulatory status in country of origin \_\_\_\_\_

#### (D) Healthcare Facility Information (if available)

1. Name : \_\_\_\_\_

2. Address : \_\_\_\_\_

3. Contact Person Name at the site of event : \_\_\_\_\_

4. Tel. No. : \_\_\_\_\_

#### (E) Causality Assessment

1. Investigation action taken: \_\_\_\_\_

2. Root cause of problem (Applicable for follow up / final reports): \_\_\_\_\_

Continue on Page 5

#### (F) Manufacturer/Authorized Representative Investigation & Action taken

1. Manufacturer/Authorized Representative device risk analysis report: \_\_\_\_\_

2. Corrective / preventive action taken: \_\_\_\_\_

Continue on Page 5

3. Device history review: \_\_\_\_\_

Continue on Page 5

**Where to report?**  
 Duly filled Medical Device Adverse Event Reporting Form can be sent to Indian Pharmacopoeia Commission, Ministry of Health and Family Welfare, Government of India, Sector-23, Rajnagar, Ghaziabad-20002, Tel-0120-2783400, 2783401 and 2783392, FAX-0120-2783311 or email to [mvp@ipcindia@gmail.com](mailto:mvp@ipcindia@gmail.com) Or Call on Helpline no. 1800 180 3024 to report Adverse event.

Partnering Organizations

**Disclaimer:**  
 Confidentiality: The patient's identity is held in strict confidence and protected to the fullest extent. Programme staff is not expected to and will not disclose the reporter's identity in response to a request from the public. Submission of a report does not constitute an admission that medical personnel or manufacturer or the product caused or contributed to the adverse event.

Figure 1. Pictorial representation of medical device adverse event (MDAE) reporting form.

serial number, year of manufacturing. Furthermore, in case of medical equipment, the additional information also includes installation date, last calibration date and preventive maintenance date, and software version is also asked. Many countries use different nomenclature systems for naming the medical device. The most prominent codes known are the Global Medical Device Nomenclature (GMDN) and Universal Medical Device Nomenclature System (UMDNS). In the reporting form, the reporter has an option to add the nomenclature code of the device while reporting the event.

### *3.1.5 Event description*

This section includes the most important dates associated with the adverse event, such as the date in which the event or any near miss incident occurred, etc. Furthermore, this section also comprises the information about device operator, device location and the detailed description of the event. The reporter may mark an event as serious in case it fulfils the seriousness criteria described in MDR 2017 [5]. Otherwise, the event may be marked as non-serious.

### *3.1.6 Patient information*

This section contains the patient information, including its medical history and final patient outcome after the adverse event has occurred. Additionally, the patient hospital ID, age, gender is also comprised in this section.

### *3.1.7 Healthcare facility information*

This section includes the details of the hospital in which the event took place, as well as the details of a contact person at the hospital, for the further follow-up communication related to the adverse event.

### *3.1.8 Causality assessment*

This section aims to collect the information regarding the investigation process carried out by the clinical specialists from the healthcare facility, or by the concerned personnel from the manufacturing organization, to further drawing out the root cause of the problem and the immediate action taken to reverse the adverse effect, if possible. The root cause will ascertain the most likely reason for the occurrence of the adverse event.


### *3.1.9 Manufacturer/Authorized representative investigation & action taken*

This section provides the information related to the investigation methods performed by the manufacturer/authorized representative and device history, which includes a review of similar events occurred from the same batch/lot, the analysis report of the event related to the medical device, and the corrective/preventive action/recall taken to prevent the patient from being affected by the device, if any. The MDAE form is designed in such a manner that it collects the maximum information required, which may be helpful for the identification of the MDAE and for creating the database of the medical device-related errors, thus enabling to trace the trend of adverse events associated with medical devices. The MDAE form may also help the medical device stakeholders to provide appropriate information and enhance the quality of the information collected.

## **3.2 PPE Reporting Form**

During the prevailing situation regarding the COVID-19 pandemic, the NCC-MvPI specially designed a one-page editable MDAE reporting form, which primarily aims to collect the adverse events associated with the use of PPEs used for medical purposes (**Figure 2**) [11]. The information required to be filled in the reporting form under the different categories is as follows [11]:

Version no. 1.1



**PERSONAL PROTECTIVE EQUIPMENT ADVERSE EVENT REPORTING FORM**

Market Surveillance Programme of India (MvPI)

Where to report: Duty filled form can be sent to Indian Pharmacopoeia Commission, Ministry of Health and Family Welfare, Government of India, Sector-23, Roza, Gurgaon, Haryana-20002, Tel: 0120-2783400, 2783401 and 2783392, Fax: 0120-2783311 or email to [ipcplphd@gmail.com](mailto:ipcplphd@gmail.com) or Call on helpline no. 1800 180 3024 to report adverse event.

1. General Information:	2. Type of report:
Date of report: _____ Date of event: _____	<input type="checkbox"/> Initial <input type="checkbox"/> Follow-up (Ref. no. _____)
3. Reporter details:	
Name: _____ Address: _____ Contact No.: _____ E-mail address: _____	
4. PPE Type:	
<input type="checkbox"/> Gloves <input type="checkbox"/> Coverall <input type="checkbox"/> Goggles <input type="checkbox"/> N-95 Masks <input type="checkbox"/> Shoe Covers <input type="checkbox"/> Face Shield <input type="checkbox"/> Body Bags <input type="checkbox"/> Triple Layer Medical Mask <input type="checkbox"/> Sanitizer <input type="checkbox"/> Other (Specify): _____	
5. PPE Details:	
Brand name: _____ Manufacturer name and address: _____ Importer name and address: _____ Distributor name and address: _____ Marketed by: _____ License No. / Registration No.: _____ Model No.: _____      Batch No.: _____ Unique Certification Code: _____      Test Standard: _____ Manufacturing Date: _____      Expiry Date: _____ PPE Current Location: <input type="checkbox"/> Device destroyed <input type="checkbox"/> Still in use <input type="checkbox"/> Return to manufacturer	
6. Location of event:	7. Type of event:
<input type="checkbox"/> Point of Entry (Immigration counters, customs and airport security) <input type="checkbox"/> Hospital Setting <input type="checkbox"/> In-patient Services <input type="checkbox"/> Emergency Department <input type="checkbox"/> Pre-hospital (Ambulance) Services <input type="checkbox"/> Other Supportive/ Ancillary Services (Laboratory, Mortuary, Sanitation) <input type="checkbox"/> Health Workers in Community Setting <input type="checkbox"/> Quarantine facility <input type="checkbox"/> Home Quarantine <input type="checkbox"/> Other (Specify): _____	Serious: _____ <input checked="" type="checkbox"/> Non-Serious <input type="checkbox"/> Death <input type="checkbox"/> Life Threatening <input type="checkbox"/> Disability or permanent damage <input type="checkbox"/> Hospitalization / Prolonged Hospitalization <input type="checkbox"/> Congenital anomaly / Birth defect <input type="checkbox"/> Any other serious
8. User details:	
Initials: _____ Age: _____ Gender (M/F/O): _____ Outcome: <input type="checkbox"/> Recovered <input type="checkbox"/> Not yet recovered <input type="checkbox"/> Death <input type="checkbox"/> Other: _____	
9. Detailed Description of Event:	
10. Hospital/Quarantine facility details:	
Facility Name: _____ Address: _____ Contact Person: _____	

**Figure 2.**  
 Pictorial representation of personal protective equipment (PPE) reporting form.

### 3.2.1 General information

This section includes the exact date in which the event was reported to the NCC-MvPI, IPC, and the type of report that specifies whether the event is Initial/Follow-up. The initial report is the first notification about an adverse



event submitted to the NCC-MvPI, IPC, once the reporter became aware of it. The follow-up report comprises the additional information about the previous report.

### *3.2.2 Reporter details*

This section comprises the details of the reporter, including name, address, contact number and e-mail address. The information provided in this section is kept confidential and only utilized for the follow-up.

### *3.2.3 PPE type*

This section encompasses the type of PPE involved in the adverse event/reaction—gloves, coverall, goggles, N-95 masks, shoe covers, face shields, body bags, triple layer medical mask, among others.

### *3.2.4 PPE details*

This section describes the specific details of the PPE involved in the adverse event. These details include the brand name, manufacturer/importer/distributor name, batch number, model number, license number, unique certification code, test standard followed, manufacturing date and expiry date.

### *3.2.5 Location of event*

This section refers to the location where the adverse event has occurred, and includes inpatient department, quarantine facilities, emergency department, etc.

### *3.2.6 Type of event*

This section comprises the seriousness of the event. If the event involves the following outcomes: death/life threatening/disability or permanent damage/hospitalization/congenital anomaly, then it should be marked as serious. Otherwise, the event may be marked as non-serious.

### *3.2.7 User details*

This section covers the details of the PPE user, including user initials, age, gender, etc.

### *3.2.8 Event description*

This section includes the detailed description of an adverse event associated with PPEs.

### *3.2.9 Hospital/quarantine facility details*

This section provides the details related to the hospital/quarantine facilities, including name, address and contact person. The PPE form is designed in such a manner that it collects all the required information, which may be used for the identification of PPE-related adverse events and for creating the database of such adverse events.

### **3.3 Field safety corrective action (FSCA) notification form**

The FSCA [11] refers to any action taken to reduce a risk of death or serious deterioration in the state of health associated with the use of a medical device, including the: (i) device returned to the manufacturer, (ii) device design changes, (iii) device software upgrade, (iv) labelling changes, (v) changes in instructions for use or directions for use or technical manual, (vi) device destruction and (vii) device exchange. For more information, see [13].

### **3.4 Legal obligation**

The submitted MDAE report does not have any legal implication concerning the reporters. The patients' identity will be held under strict confidence and protected to its full extent. As the reporting programme is voluntary in nature, healthcare providers are encouraged to report adverse events for a better understanding of the risk associated with the use of medical devices, and to safeguard the health of the Indian population [14].

### **3.5 Essential data for effective reporting**

This section includes the following information: date of event, reporter contact information, device name, manufacturer/importer/distributor details, catalogue number., lot/batch number., serial number., model number., date of implantation/explantation (if applicable), seriousness of the event, event description, patient history, patient outcome, healthcare facility information, root cause and corrective/preventive action [13].

### **3.6 Factors contributing to a serious adverse event**

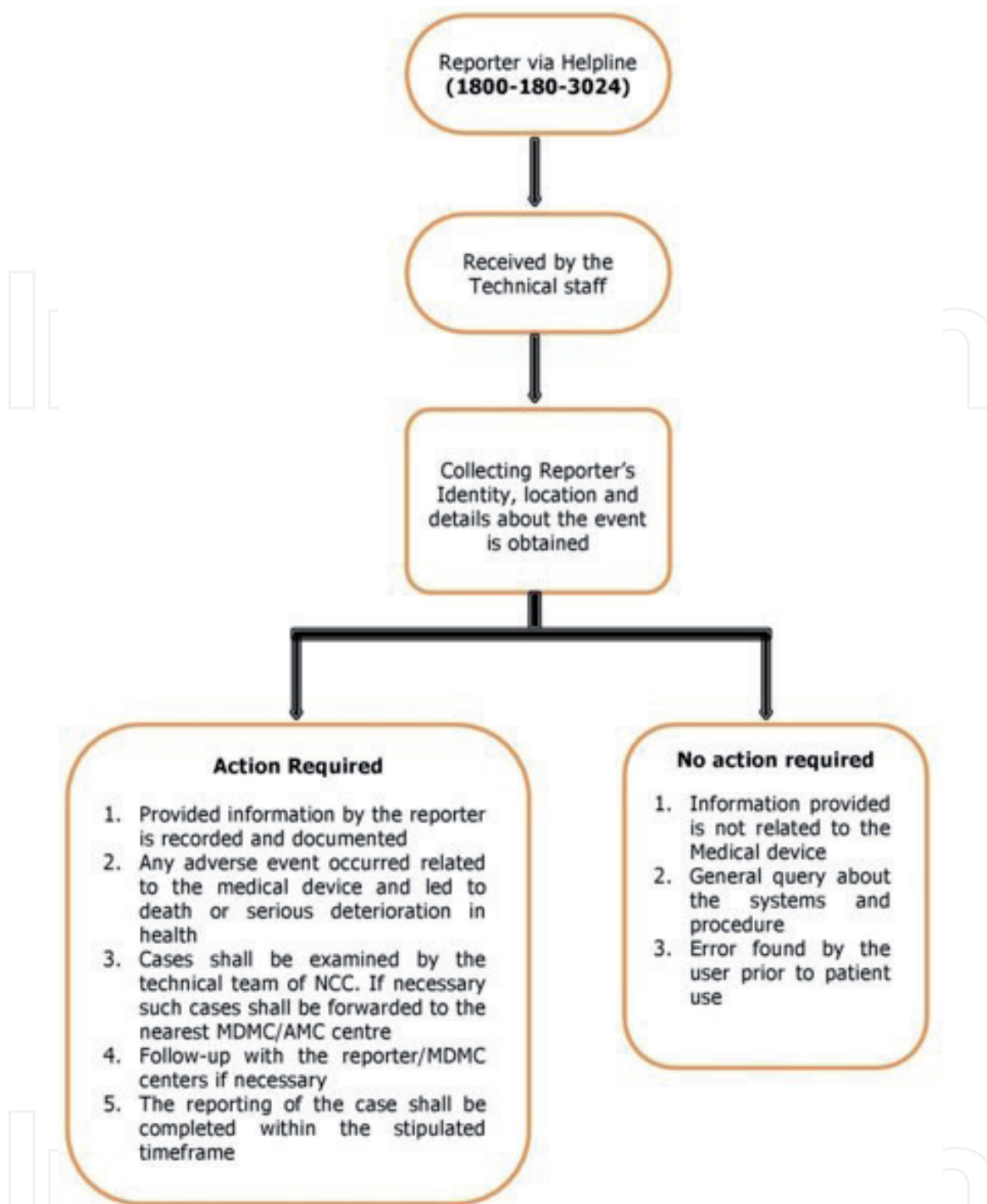
The improper functioning of the medical devices, manufacturing defects, design and labelling issues, user and procedural errors are some examples of the major contributing factors that can lead to the occurrence of a serious adverse event if underestimated [15].

## **4. Helpline facility for reporting adverse events**

The IPC has already launched a toll-free helpline facility, helpline Number- 1800 180 3024 (Monday to Friday- 9:00 am to 5:30 pm), for the reporting of adverse drug reactions by healthcare professionals and others [16]. Currently, this facility is also being extended to the report of any adverse event associated with the use of medical devices. Both the data management and the procedure adopted to receive the information from the healthcare professionals, patients and others are given in **Figure 3**.

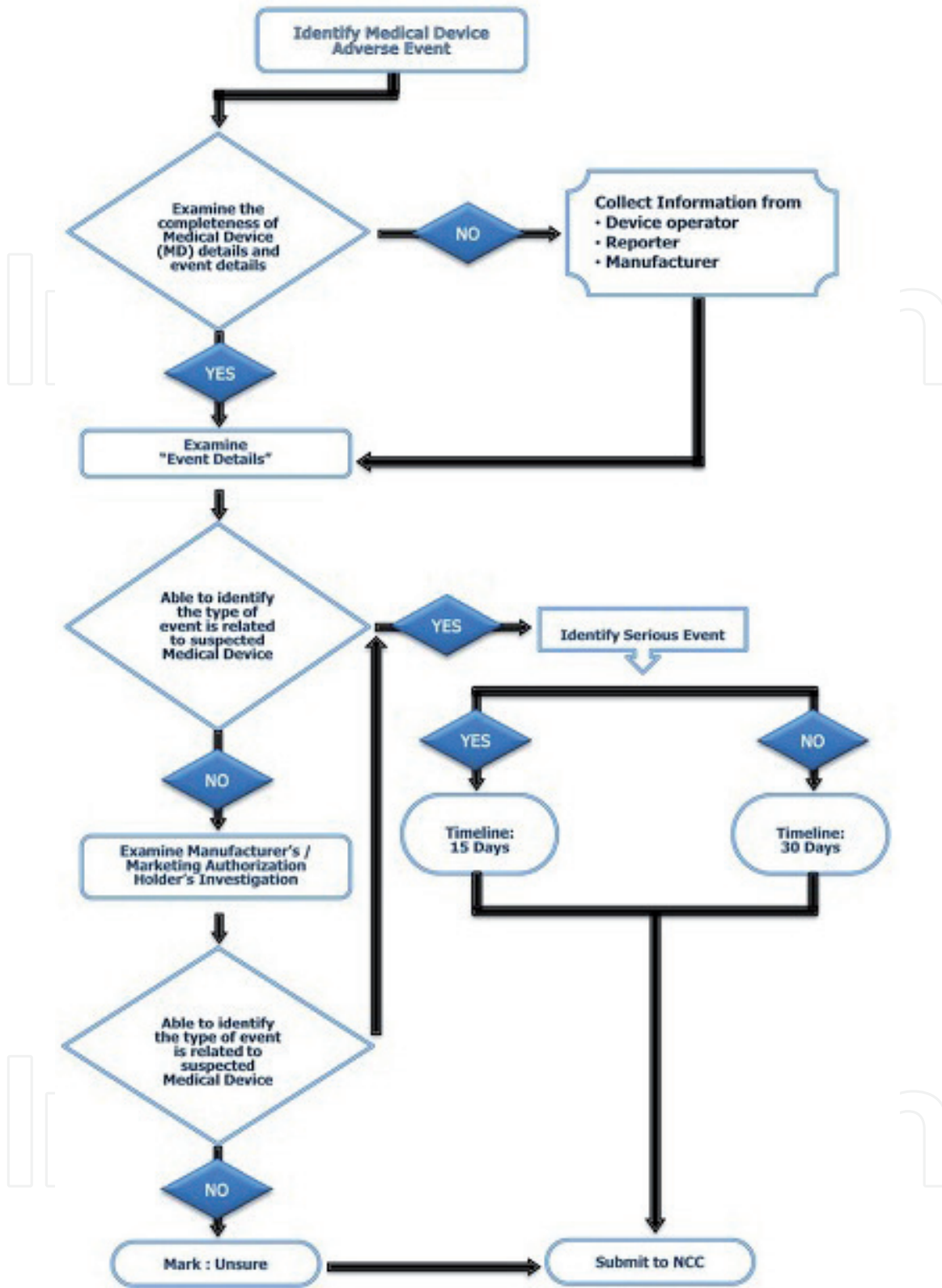
## **5. Enrolment process as MDMC under MvPI**

Healthcare facilities including district/government/private hospitals, and autonomous bodies are recognized as MDMCs and AMCs respectively by the NCC-MvPI, IPC and NCC-PvPI, IPC. The function of MDMC is to raise awareness about the programme and reporting of MDAEs. A 'Letter of Intent' is required to be submitted by the head of the Institution/hospital for participating in this nationwide programme to



**Figure 3.** Flow diagram representing the report of adverse events related to medical devices through helpline.

monitor MDAEs [17]. After the suitability examination by the competent authority, the proposed centre may be recognized as an MDMC under MvPI. These centres are expected to collate data on adverse events associated with medical devices and IVDs under the MvPI and report them to the NCC-MvPI, IPC. For the proper functioning of MvPI activities in their respective centres, a research associate will be appointed by the NCC-MvPI, IPC [18]. The research associate will be responsible for the collection of reports and conduction of training programs on materiovigilance, aiming to sensitize the healthcare professionals and the general public. The technical team at the MDMC performs the validation of the report by carrying out the causality assessment to identify any causal/temporal relationship between the event and the medical device. The workflow for determining the report responsible for the identification of adverse events significantly related to medical devices is shown at **Figure 4**.



**Figure 4.** Medical device-related adverse events identification flowchart used at medical device adverse event monitoring centres (MDMC).

## 6. Report Handling and Management

Initially, the reports are collected and analysed at the NCC-MvPI, IPC, by applying the globally recognized scientific standards/parameters to ensure the quality of the reports. In the second level, these analysed cases are forwarded to the subject expert group panel for review, and technical interpretation is drawn considering



both the clinical, as well as technical aspects. In the third level, these reports are placed before the core technical committee for the conclusions and recommendations, and are further forwarded to the national regulatory authority for implementation of the necessary actions (**Figure 4**) [19].

## **7. Data Generated**

The NCC has collected the reported adverse events and provided a comparison of the serious adverse events reported in the index period from January to December during the years of 2018, 2019 and 2020. In total, NCC has received 3187 adverse events, consisting of 1986 serious and 1201 non-serious events. Out of the serious adverse events reported, 23% were reported in 2018, 37% in 2019 and 40% in 2020. When comparing the reported data, an increase of 75% in serious adverse event reporting could be observed. Out of the adverse events reported, 73% of the reports were received from MAHs, 23% from MDMCs and 4% from AMCs [19]. This confirms and highlights the importance of the modalities developed, as they have significantly helped to improve the reporting of adverse events related to medical devices.

## **8. Conclusion**

The tools developed for reporting may stimulate the communication between medical device users and the regulatory authorities to closely monitor medical device safety. In order to generate proper regulatory decisions and to ensure the quality and efficacy of the medical devices that are being sold and distributed in the Indian market, MvPI has shown to provide a robust and sustainable system for collecting and reporting adverse events associated with medical devices. This will highly encourage all the healthcare professionals, MAH and the public to efficiently report adverse events associated with medical devices.

## **Acknowledgements**

The authors are grateful to Ministry of Health & Family Welfare, Government of India for the financial support provided to run the MvPI efficiently.

## **Conflict of interest statement**

The authors declare no potential conflict of interest.

## **Abbreviations**

AMC	Adverse Drug Reaction Monitoring Centre
CLA	Central Licensing Authority
FSCA	Field Safety Corrective Action
FSN	Field Safety Notice
GMDN	Global Medical Device Nomenclature
IPC	Indian Pharmacopoeia Commission
IVDs	<i>In-Vitro</i> Diagnostics

MAH	Marketing Authorisation Holders
MDAE	Medical Device Adverse Event
MDMC	Medical Device Adverse Event Monitoring Centre
MDR	Medical Device Rules
MoU	Memorandum of Understanding
MvPI	Materiovigilance Programme of India
NABH	National Accreditation Board for Hospitals and Healthcare providers
NCC	National Coordination Centre
PPE	Personal Protective Equipment
PvPI	Pharmacovigilance Programme of India
QCI	Quality Council of India
SEARN	South East Asia Research Network
SLA	State Licensing Authority
UDI	Unique Device Identification
UMDN	Universal Medical Device Nomenclature

## Author details

Vivekanandan Kalaiselven\*, Shatrunajay Shukla, Nikita Mishra and Pawan Kumar Materiovigilance Associate in Materiovigilance Programme of India, Indian Pharmacopoeia Commission, Ministry of Health and Family Welfare, Government of India, Ghaziabad, Uttar Pradesh, India

\*Address all correspondence to: [vivekarts@rediffmail.com](mailto:vivekarts@rediffmail.com)

## IntechOpen

© 2021 The Author(s). Licensee IntechOpen. This chapter is distributed under the terms of the Creative Commons Attribution License (<http://creativecommons.org/licenses/by/3.0>), which permits unrestricted use, distribution, and reproduction in any medium, provided the original work is properly cited. 

## References

- [1] Materiovigilance and Medical Devices, doi.org/10.1007/978-3-319-07653-9\_21 [Online]. Available: [https://link.springer.com/chapter/10.1007/978-3-319-07653-9\\_21](https://link.springer.com/chapter/10.1007/978-3-319-07653-9_21) (accessed Mar. 15, 2021).
- [2] Medical Device Recalls, FDA, Sep. 09, 2020. [Online]. Available: <https://www.fda.gov/medical-devices/medical-device-safety/medical-device-recalls> (accessed Feb. 24, 2021).
- [3] Analysis of FDA-Approved Orthopaedic Devices and Their Recalls, JBJS, vol. 98, no. 6, pp. 517-524, Mar. 2016, doi: 10.2106/JBJS.15.00286 [Online]. Available: <https://pubmed.ncbi.nlm.nih.gov/26984921/> (accessed Feb. 24, 2021).
- [4] Materiovigilance programme of India (MvPI): A step towards patient safety for medical devices. [Online]. Available: [https://www.researchgate.net/publication/338065787\\_MATERIOVIGILANCE\\_PROGRAMME\\_OF\\_INDIA\\_MvPI\\_A\\_STEP\\_TOWARDS\\_PATIENT\\_SAFETY\\_FOR\\_MEDICAL\\_DEVICES](https://www.researchgate.net/publication/338065787_MATERIOVIGILANCE_PROGRAMME_OF_INDIA_MvPI_A_STEP_TOWARDS_PATIENT_SAFETY_FOR_MEDICAL_DEVICES) (accessed Feb. 24, 2021).
- [5] Medical device rules 2017, [Online]. Available: [https://cdsco.gov.in/opencms/resources/UploadCDSCOWeb/2018/UploadGazette\\_NotificationsFiles/MedicalDeviceRulesr78E.pdf](https://cdsco.gov.in/opencms/resources/UploadCDSCOWeb/2018/UploadGazette_NotificationsFiles/MedicalDeviceRulesr78E.pdf) (accessed Feb. 24, 2021).
- [6] Materiovigilance: Current status in India analogous to its global status, DOI:10.5281/zenodo.4299028 [Online]. Available: <https://zenodo.org/record/4299028#.YE9F0NIzZ0w.html> (accessed Mar. 15, 2021).
- [7] Pharmacovigilance Programme of India (PvPI) Updates - Indian Pharmacopoeia Commission, [Online]. Available: <https://ipc.gov.in/mandates/pvpi/pvpi-updates.html> (accessed Feb. 24, 2021).
- [8] Implementation of adverse event reporting for medical devices, India, [Online]. Available: [https://www.researchgate.net/publication/339488352\\_Implementation\\_of\\_adverse\\_event\\_reporting\\_for\\_medical\\_devices\\_India](https://www.researchgate.net/publication/339488352_Implementation_of_adverse_event_reporting_for_medical_devices_India) (accessed Feb. 24, 2021).
- [9] MATERIOVIGILANCE: AN EMERGING DISCIPLINE [Online]. Available: [https://www.worldwidejournals.com/international-journal-of-scientific-research-\(IJSR\)/fileview.php?val=June\\_2018\\_1527932925\\_\\_36.pdf](https://www.worldwidejournals.com/international-journal-of-scientific-research-(IJSR)/fileview.php?val=June_2018_1527932925__36.pdf) (accessed Mar. 15, 2021).
- [10] Pivotal role of Pharmacovigilance Programme of India in containment of antimicrobial resistance in India, doi: 10.4103/picr.PICR\_29\_18 [Online]. Available: <https://www.ncbi.nlm.nih.gov/pmc/articles/PMC6647896/> (accessed Feb. 24, 2021).
- [11] Medical Devices Adverse Event Reporting Tools - Indian Pharmacopoeia Commission [Online]. Available: <https://ipc.gov.in/mandates/pvpi/materiovigilance-programme-of-india-mvpi.html?id=597:medical-devices-adverse-event-reporting-tools&catid=2> (accessed Feb. 24, 2021).
- [12] Adverse events reporting of medical devices, HSA. [Online]. Available: <https://www.hsa.gov.sg/medical-devices/adverse-events> (accessed Feb. 24, 2021).
- [13] Guidance Document: Materiovigilance Programme of India (version 1.2). [Online]. Available: [https://ipc.gov.in/images/Guideline\\_-\\_11-03-2020.pdf](https://ipc.gov.in/images/Guideline_-_11-03-2020.pdf) (accessed Feb. 24, 2021).
- [14] Materiovigilance: An Indian perspective, *Perspect Clin Res*, vol. 9, no. 4, pp. 175-178, 2018, doi: 10.4103/picr.PICR\_26\_18. [Online]. Available: <https://pubmed.ncbi.nlm.nih.gov/30319948/> (accessed Feb. 24, 2021).

[15] Medical Device Reporting (MDR): How to Report Medical Device Problems, FDA, Oct. 05, 2020. <https://www.fda.gov/medical-devices/medical-device-safety/medical-device-reporting-mdr-how-report-medical-device-problems> (accessed Feb. 24, 2021).

[16] V. Kalaiselvan, P. Mishra, and G. N. Singh, "Helpline facility to assist reporting of adverse drug reactions in India," WHO South East Asia J Public Health, vol. 3, no. 2, p. 194, Jun. 2014, doi: 10.4103/2224-3151.206737[Online]. Available: <https://pubmed.ncbi.nlm.nih.gov/28607307/> (accessed Feb. 24, 2021).

[17] Letter of Intent for enrolling as medical device adverse event monitoring center under materiovigilance programme. [Online]. Available: <https://ipc.gov.in/images/pdf/File715.pdf> (accessed Feb. 24, 2021).

[18] Materiovigilance Programme of India, DOI: 10.5958/0974-360X.2021.00204.3 – An Overview. [Online]. Available: <https://rjptonline.org/HTMLPaper.aspx?Journal=Research%20Journal%20of%20Pharmacy%20and%20Technology;PID=2021-14-2-100> (accessed Mar. 15, 2021).

[19] S. Shukla et al., "Implementation of adverse event reporting for medical devices, India," Bull World Health Organ, vol. 98, no. 3, pp. 206-211, Mar. 2020, doi: 10.2471/BLT.19.232785. [Online]. Available: <https://apps.who.int/iris/handle/10665/331375> (accessed Feb. 24, 2021).