

# COMPARISON OF SEVERAL GEOID MODELS OVER THE WESTERN MEDITERRANEAN SEA

Assumpció Termens<sup>(1)</sup>, Juan José Martínez-Benjamin<sup>(2)</sup>

<sup>(1)</sup>*Institut Cartogràfic de Catalunya, Parc de Montjuïc, 08034 Barcelona, Spain, Email:atermens@icc.cat*

<sup>(2)</sup>*Technical University of Catalonia, Campus Sud P, Av. Doctor Marañón 44, 08028 Barcelona, Spain, Email:jj.benjamin@upc.edu*

## ABSTRACT

The Mediterranean Sea is a semi-enclosed *true* ocean. Recent Mediterranean circulation and sea level studies using various observations and ocean general circulation models show good coherence and agreement. The satellite altimetry and tide gauge observed and model predicted sea level show good coherent with correlation coefficient of 0.6. The barotropic pressure response accounts for about 66% of the Mediterranean sea level rise (1948-2001). The estimated sea level trend ( $1.54 \pm 0.75$  mm/yr) using decadal altimetry (1985-2001) after correcting the interannual/decadal signals reconstructed using tide gauge data, agrees well with the long term trend (1948-2001) estimated using tide gauges ( $1.43 \pm 0.09$  mm/yr) in the Mediterranean Sea, and is in better agreement than before with the global long-term sea level trend ( $1.7 - 1.8$  mm/yr). Simulation studies indicate that the time-varying mass variations of Mediterranean Sea likely are sensitive to GOCE at the few mEötvös level.

One of GOCE's primary high-level data products is the global gravity model with anticipated geoid accuracy of 1 cm RMS and a spatial resolution of 130 km or longer.

Actually, the International Centre for Global Earth Models (ICGEM) distributes some GOCE's Global Gravity field Models (GGMs) like GO\_CONS\_GCF\_2\_DIR (Bruinsma et al, 2010), GO\_CONS\_GCF\_2\_TIM (Pail et al, 2010a), GO\_CONS\_GCF\_2\_SPW (Migliaccio et al, 2010), GOCO01S (Pail et al, 2010b).

The work focuses on the comparison between these GOCE's GGMs, EGM2008 and EIGEN-51C, with sea gravity anomalies and geoid undulations provided by existing local and regional geoids – like IBERGEO (Sevilla, 2008), IGG (Corchete et al, 2005), etc. - in the Western Mediterranean Sea in order to find the GGM that best fits this area.

We also try to estimate how the GOCE geoid data, provided by ESA, works on the Western Mediterranean Sea in order to prepare future geomatic issues.

## 1. INTRODUCTION

The main objective is the determination of the Mean Dynamic Topography from GOCE, altimetry, GPS and in situ tide gauges in the Western Mediterranean Sea. The combination of satellite gravity missions, GRACE and GOCE, is expected to make a significant contribution to improving the long-wavelength, satellite derived component of the gravitational field of the Earth.

The Western Mediterranean Sea is a quite complex area for different reasons: presence of several islands, coastal lines, shallow waters and a peculiar hydrologic equilibrium due to its proximity to the Atlantic water exchange area. This makes the estimation of the gravity field and the geoid slope quite a difficult task.

There are some results for the local/regional gravimetric geoid, which have been built up using different techniques such as least squares collocation (LSC) and spectral methodology as fast Fourier transform. In all cases, the classical remove-restore technique has been employed, taking into account the long wavelength part of the gravity field. The result is a fairly smooth surface.

Long-term (~100 years) sea level records in the form of tide gauge stations exist at the northern coasts of the Western Mediterranean basin at Marseille, Genova, Trieste and Venice, and a larger number of tide gauge records with 40-year data span exist.

The intention of this study is to present the behaviour of different Earth's global gravity field models over the Western Mediterranean Sea.

## 2. ICGEM MODELS

To accomplish this study, it is important that all the Earth's global gravity field models have the same data format and available to the public as products of geodesy. These reasons are some of the objectives of the International Centre for Global Earth Models (ICGEM) that was established in 2003 as a one of six centres of the International Gravity Field Service (IGFS).

One of the ICGEM's objectives is collecting and long-term archiving of existing global gravity field models and making them available on the web.

A web-interface to calculate gravity functionals from the spherical harmonic models on freely selectable grids, with respect to a reference system of the user's choice, is provided. The following functionals are available: height anomaly, geoid height, gravity disturbance and gravity anomaly. Filtering is possible by selecting the range of used coefficients or the filter length of a Gaussian averaging filter.

In this paper some geoid models have been computed, the selected parameters of the calculation service used are defined in Table 1 and Table 2 shows the information about the ICGEM models used in this study.

Parameter	Value
product_type	gravity_field
Shmname	<model_file>
max_used_degree	<d/o>
tide_system	tide_free (tf) / zero_tide (zt) / mean_tide (mt)
Functional	Geoid
zero_degree_term	Included
Unit	Meter
Refsysname	GRS80
long_lat_unit	Degree
latlimit_north / south	45.0 / 35.0
long_limit_west / east	0.0 / 10.0
Gridstep	0.05
latitude/longitude_parallels	201 / 201
number_of_gridpoints	40401
Gapvalue	999.0
Gridformat	long_lat_value

Table 1. ICGEM calculation service parameters used.

### 3. DIFFERENCES OF ONE MODEL VARYING THE PARAMETER *TIDE\_SYSTEM*

We start the study with the evaluation which type of tide system has to be used in the computations of this paper. Fig. 1, Fig. 2 and Fig. 3 shows the differences between

*zero\_tide* and *mean\_tide* respect to *tide\_free* system from the models *egm2008*, *go\_cons\_gcf\_2\_tim\_r2* and *go\_cons\_gcf\_2\_dir\_r2*, respectively.

	<model_file>	<d/o>	Data
01	egm2008	2190	S(GRACE),G,A
02	egm2008upto360	360	S(GRACE),G,A
03	Itg-grace2010s	180	S(GRACE)
04	eigen-champ05s	150	S(CHAMP)
05	eigen-51c	359	S(GRACE), S(CHAMP),G,A
06	goco01s	224	S(GOCE)
07	Go_cons_gcf_2_spw_r1	210	S(GOCE)
08	Go_cons_gcf_2_tim_r1	224	S(GOCE)
09	go_cons_gcf_2_dir_r1	240	S(GOCE)
10	go_cons_gcf_2_tim_r2	250	S(GOCE)
11	go_cons_gcf_2_dir_r2	240	S(GOCE)

Table 2. ICGEM Earth global gravity models.

After the analysis of these differences -only an offset- all the models in this study have been computed using tide free system.

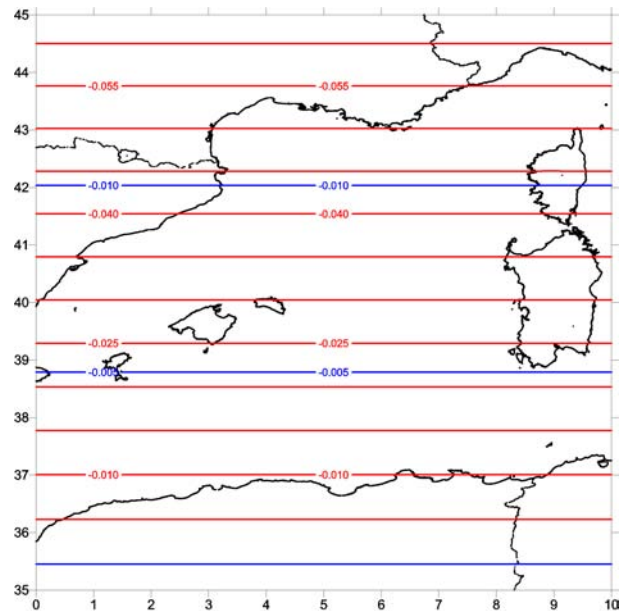


Figure 1. Differences of egm2008 model varying the tide system. Red lines: mean\_tide vs tide\_free. Blue lines: zero\_tide vs tide\_free.

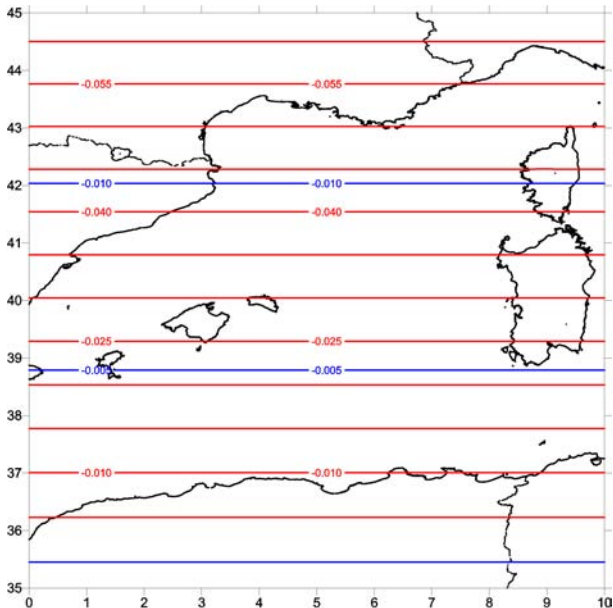


Figure 2. Differences of go\_cons\_gcf\_2\_tim\_r2 model varying the tide system. Red lines: mean\_tide vs tide\_free. Blue lines: zero\_tide vs tide\_free.

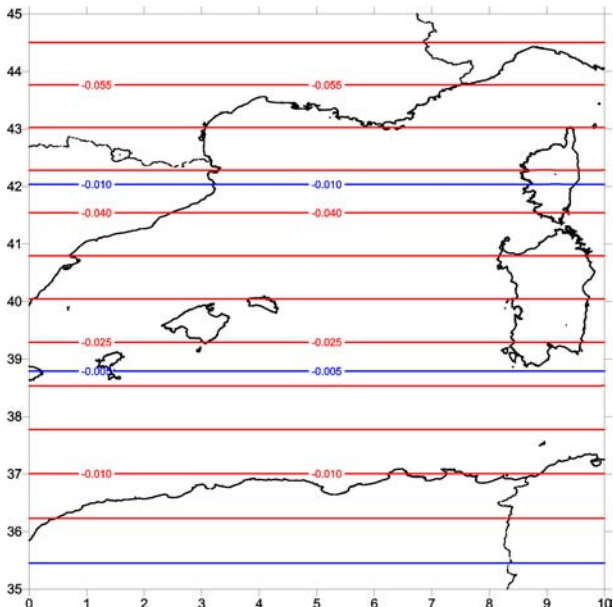


Figure 3. Differences of go\_cons\_gcf\_2\_dir\_r2 model varying the tide system. Red lines: mean\_tide vs tide\_free. Blue lines: zero\_tide vs tide\_free.

#### 4. DIFFERENCES BETWEEN EGM2008, GO\_CONS\_GCF\_2\_TIM\_R2 AND GO\_CONS\_GCF\_2\_DIR\_R2

In this section, we have computed the differences between these 3 models, taking as reference the

egm2008 model. Remember that all the models are computing using the tide\_free system.

Fig. 5, Fig. 6 and Fig. 7 shows the differences of the GOCE models, go\_cons\_gcf\_2\_tim\_r2 and go\_cons\_gcf\_3\_dir\_r2 respectively, respect the egm2008 model.

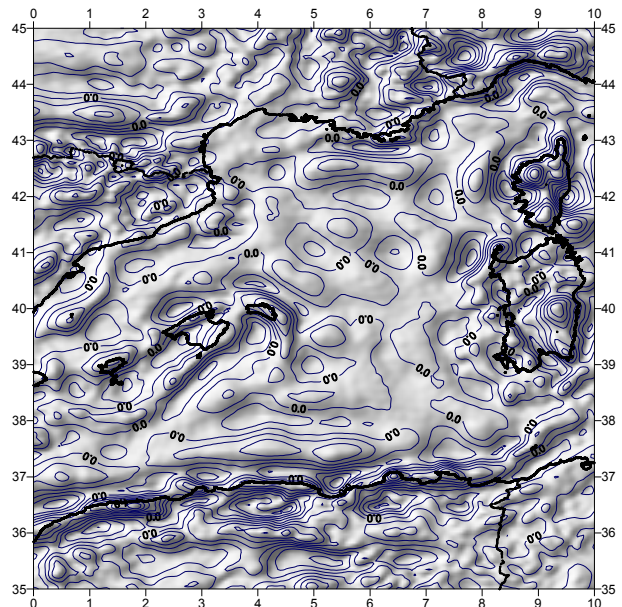


Figure 4. Differences between eigen-51c and egm2008. Tide system: tide\_free. Total number of points: 40410. Mean: 0.00m / Max: 1.38m / Min: -1.04m / Std: 0.25m.

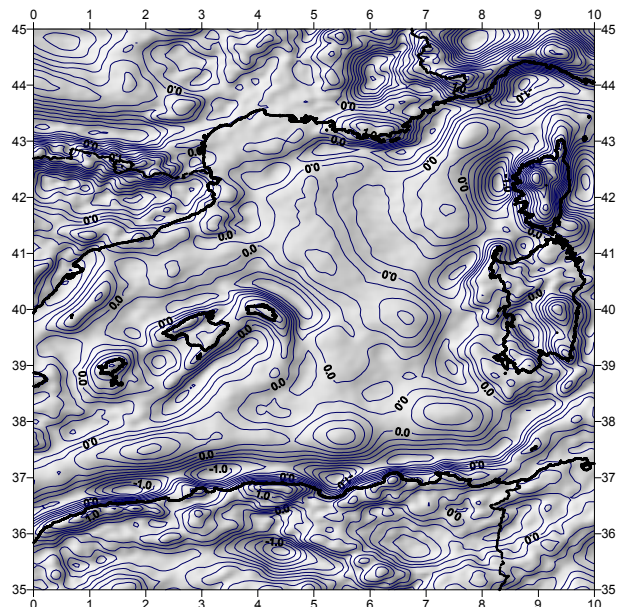


Figure 5. Differences between go\_cons\_gcf\_2\_tim\_r2 and egm2008. Tide system: tide\_free. Total number of points: 40410. Mean: 0.01m / Max: 2.57m / Min: -1.56m / Std: 0.44m.

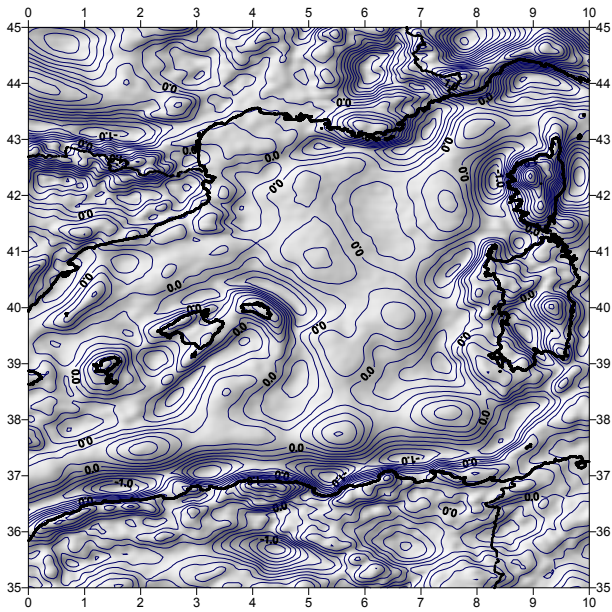


Figure 6. Differences between *go\_cons\_gcf\_2\_dir\_r2* and *egm2008*. Tide system: *tide\_free*. Total number of points: 40410. Mean: -0.003m / Max: 2.46m / Min: -1.54m / Std: 0.45m.

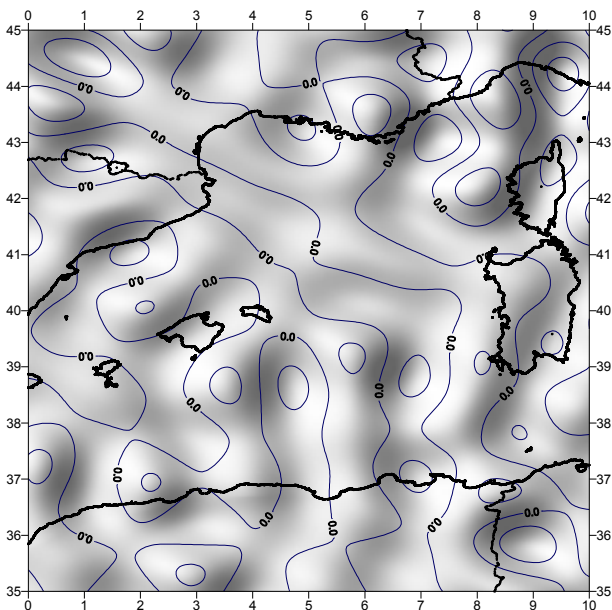


Figure 7. Differences between *go\_cons\_gcf\_2\_tim\_r2* and *go\_cons\_gcf\_2\_dir\_r2*. Tide system: *tide\_free*. Total number of points: 40410. Mean: -0.01m / Max: 0.38m / Min: -0.49m / Std: 0.12m.

At the moment of writing this paper, the authors are evaluating the differences between each two models

listed in Table 2. The statistics of this evaluation are shown in Table 3.

Dat	grd	Min	Mean	Max	Std
01	05	-1.041	0.000	1.384	0.248
01	10	-1.564	0.005	2.574	0.444
01	11	-1.538	-0.003	2.457	0.445
10	11	-0.492	-0.008	0.376	0.116

Table 3. Statistics of the residuals of two geoid models, computed as  $N(\text{residuals})=N(\text{dat})-\text{interpol}(N(\text{grd}))$ .

### 5. GPS/LEVELLING COMPARISON IN TIDE GAUGE STATIONS.

It is also interesting to evaluate independent data, as GPS/levelling, existing on the area. We start with tide gauge stations where exist GPS and levelling measures. Fig. 8 shows the Spanish tide gauge network REDMAR.



Figure 8. REDMAR network of tide gauges in Spain over the Western Mediterranean Sea.

Despite that all the existing tide gauges (Barcelona, Sagunto, Valencia, Gandia, Mahó, Alcudia, Palma, Ibiza and Formentera) in the Western Mediterranean Sea has been levelled, only the tide gauges of Palma de Mallorca and Ibiza has also GPS data.

Every tide gauge has different height zero reference (Fig. 9) which are used for different purposes: NMMA, mean sea level of the tide gauge (ZP), and the hydrographic zero (ZH).

We need more GPS/levelling data in order to obtain some conclusions. But the authors have a good feeling about the good results which can be obtained from GOCE models.

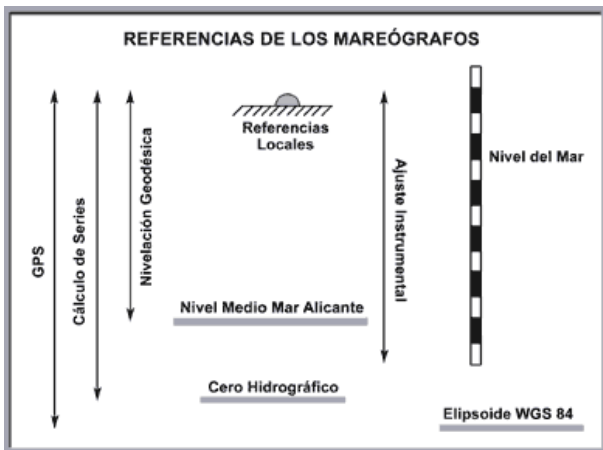


Figure 9. Relation between the different height references in a tide gauge.

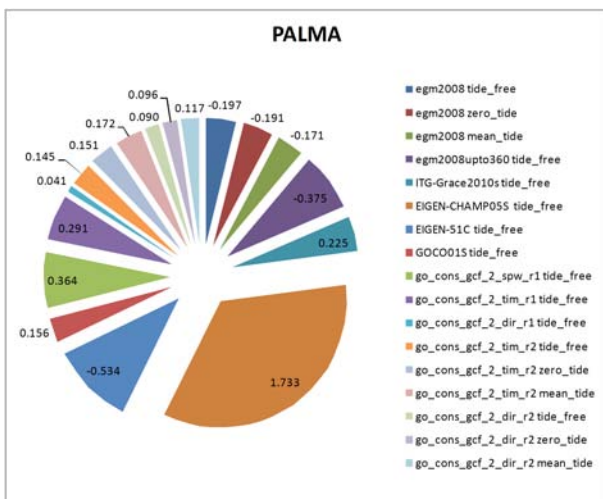


Figure 10. Residuals of geoid undulations in Palma tide gauge.

## 6. CONCLUSIONS

The evaluations of this paper are a first approximation to the work that has to be done in the area.

The authors believe that the combined models that will be obtained in the next future – some EGMyyyy with GRACE and GOCE - will improve the results of this first evaluation.

The evaluation can be also complete with the computation of residuals of more GPS/levelling in land.

This work has been done inside the framework of the MICINN project: CGL2008-05244-E.

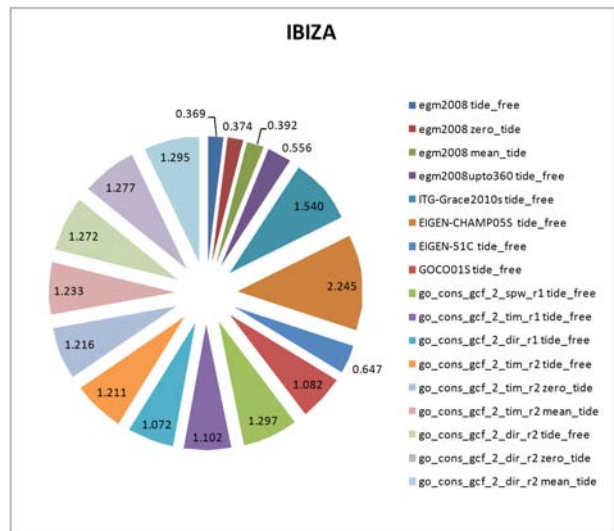


Figure 11. Residuals of geoid undulations in Ibiza tide gauge.

## 7. REFERENCES

Bruinsma et al, 2010. GOCE Gravity Field Recovery by Means of the Direct Numerical Method.

ESA AO.GOCE.4312. “Calibration/Validation of GOCE data products in the Mediterranean Sea”.

Flechtner et al, 2010. The Release 04 CHAMP and GRACE EIGEN Gravity Field Models.

GOCO consortium, 2010. Combined satellite gravity field model GOCO01S derived from GOCE and GRACE.

Mayer-Gürr et al, 2010. ITG-Grace2010 Gravity Field Model.

Migliaccio et al, 2010. GOCE data analysis: the space-wise approach and the first space-wise gravity field model.

Pail et al, 2010. GOCE gravity field model derived from orbit and gradiometry data applying the time-wise method.

Pavlis et al, 2008. An Earth Gravitational Model to Degree 2160: EGM2008.