

*Toward a next generation particle  
precipitation model: Mesoscale prediction  
through machine learning (a case study  
and framework for progress)*

Article

Published Version

Creative Commons: Attribution 4.0 (CC-BY)

Open Access

McGranaghan, R. M., Ziegler, J., Bloch, T., Hatch, S., Owens, M. ORCID: <https://orcid.org/0000-0003-2061-2453>, Gjerloev, J., Zhang, B. and Skone, S. (2021) Toward a next generation particle precipitation model: Mesoscale prediction through machine learning (a case study and framework for progress). *Space Weather*, 19 (6). e2020SW002684. ISSN 1542-7390 doi: <https://doi.org/10.1029/2020SW002684> Available at <https://centaur.reading.ac.uk/97443/>

It is advisable to refer to the publisher's version if you intend to cite from the work. See [Guidance on citing](#).

To link to this article DOI: <http://dx.doi.org/10.1029/2020SW002684>

Publisher: American Geophysical Union

All outputs in CentAUR are protected by Intellectual Property Rights law, including copyright law. Copyright and IPR is retained by the creators or other copyright holders. Terms and conditions for use of this material are defined in the [End User Agreement](#).

[www.reading.ac.uk/centaur](http://www.reading.ac.uk/centaur)

**CentAUR**

Central Archive at the University of Reading

Reading's research outputs online

# Space Weather

## RESEARCH ARTICLE

10.1029/2020SW002684

### Key Points:

- We utilize a data-driven organization of input parameters to produce a new total electron energy flux nowcast model (see Figure 4)
- Extended input features and higher expressive power provided by machine learning (ML) approach yields more capable mesoscale and peak flux specification (see Figure 7) and an overall reduction in specification errors compared with the state-of-the-art (see Table 1)
- A framework for evaluation of ML (and any model) in geospace is suggested, building on momentum in the community (see Section 6)

### Supporting Information:

Supporting Information may be found in the online version of this article.

### Correspondence to:

R. M. McGranaghan,  
[ryan.mcgranaghan@gmail.com](mailto:ryan.mcgranaghan@gmail.com)

### Citation:

McGranaghan, R. M., Ziegler, J., Bloch, T., Hatch, S., Camporeale, E., Lynch, K., et al. (2021). Toward a next generation particle precipitation model: Mesoscale prediction through machine learning (a case study and framework for progress). *Space Weather*, 19, e2020SW002684. <https://doi.org/10.1029/2020SW002684>

Received 19 NOV 2020  
 Accepted 31 MAR 2021

© 2021. The Authors.

This is an open access article under the terms of the [Creative Commons Attribution License](#), which permits use, distribution and reproduction in any medium, provided the original work is properly cited.

# Toward a Next Generation Particle Precipitation Model: Mesoscale Prediction Through Machine Learning (a Case Study and Framework for Progress)

Ryan M. McGranaghan<sup>1</sup> , Jack Ziegler<sup>1</sup>, Téo Bloch<sup>2</sup> , Spencer Hatch<sup>3</sup> , Enrico Camporeale<sup>4,5</sup> , Kristina Lynch<sup>6</sup> , Mathew Owens<sup>2</sup> , Jesper Gjerloev<sup>3,7</sup> , Binzheng Zhang<sup>8</sup> , and Susan Skone<sup>9</sup>

<sup>1</sup>Atmosphere and Space Technology Research Associates (ASTRA), Louisville, CO, USA, <sup>2</sup>University of Reading, Reading, England, <sup>3</sup>Birkeland Center, University of Bergen, Bergen, Norway, <sup>4</sup>CIRES, University of Colorado, Boulder, CO, USA, <sup>5</sup>NOAA Space Weather Prediction Center, Boulder, CO, USA, <sup>6</sup>Department of Physics and Astronomy, Dartmouth College, Hanover, NH, USA, <sup>7</sup>Applied Physics Laboratory, the Johns Hopkins University, Laurel, MD, USA, <sup>8</sup>Department of Earth Sciences, University of Hong Kong, Kowloon, Hong Kong, <sup>9</sup>University of Calgary, Calgary, AB, Canada

**Abstract** We advance the modeling capability of electron particle precipitation from the magnetosphere to the ionosphere through a new database and use of machine learning (ML) tools to gain utility from those data. We have compiled, curated, analyzed, and made available a new and more capable database of particle precipitation data that includes 51 satellite years of Defense Meteorological Satellite Program (DMSP) observations temporally aligned with solar wind and geomagnetic activity data. The new total electron energy flux particle precipitation nowcast model, a neural network called PrecipNet, takes advantage of increased expressive power afforded by ML approaches to appropriately utilize diverse information from the solar wind and geomagnetic activity and, importantly, their time histories. With a more capable representation of the organizing parameters and the target electron energy flux observations, PrecipNet achieves a >50% reduction in errors from a current state-of-the-art model oval variation, assessment, tracking, intensity, and online nowcasting (OVATION Prime), better captures the dynamic changes of the auroral flux, and provides evidence that it can capably reconstruct mesoscale phenomena. We create and apply a new framework for space weather model evaluation that culminates previous guidance from across the solar-terrestrial research community. The research approach and results are representative of the “new frontier” of space weather research at the intersection of traditional and data science-driven discovery and provides a foundation for future efforts.

**Plain Language Summary** Space weather is the impact of solar energy on society and a key to understanding it is the way that regions of space between the Sun and the Earth’s surface are connected. One of the most important and most challenging to model are the way that energy is carried into the upper atmosphere (100–1,000 km altitude). Particles moving along magnetic field lines “precipitate” into this region, carrying energy and momentum which drive space weather. We have produced a new model, using machine learning (ML), that better captures the dynamics of this precipitation from a large volume of data. Machine learning models, carefully evaluated, are capable of better representing nonlinear relationships than simpler approaches. We reveal our approach to using ML for space weather and provide a new framework to understand these models.

## 1. Introduction

Electron precipitation is a key component linking the ionosphere and the magnetosphere. Electrons in the magnetosphere-ionosphere (MI) system carry current, transport energy, and precipitate (i.e., follow magnetic field lines from the magnetosphere to the ionosphere) to collide with the neutral atmosphere thereby driving changes in the electrical conductivity tensor. This tensor is central to the three-dimensional electrical current circuit that flows over vast distances between the magnetosphere and the ionosphere. Indeed, particle precipitation is a key input to all global circulation models (GCMs) such as the Global Ionosphere Thermosphere Model (GITM) (Ridley et al., 2006), the Thermosphere Ionosphere Electrodynamic General Circulation Model (TIE-GCM) (Roble et al., 1988), and the Whole Atmosphere Model-Ionosphere

Plasmasphere Electrodynamics (WAM-IPE) model (Fuller-Rowell et al., 2008; Millward et al., 1996) and is a starting point to the physical understanding of the ionosphere-thermosphere system. In a broader view, electron precipitation plays a role for space weather. Abrupt and intense precipitation events are associated with likewise abrupt and large amplitude changes in the ionospheric electron density and currents that drive ground-induced currents. Such variability is linked to a number of potentially hazardous impacts, including errors in directional drilling, power grid transformer disruption, loss of Global Navigation Satellite Systems (GNSS) communication, and corresponding timing and position accuracy (Cannon et al., 2013). These are effects that need to be mitigated for the functioning of our increasingly technologically dependent society.

Models of electron precipitation and the associated ionospheric electrical conductivity tensor elements have been proposed over the last few decades (for a review of such models, see Machol et al., 2012; Newell et al., 2014, or Chapter 2 of McGranaghan, 2016). In Section 4, we provide a brief overview of those models and the details relevant to the model we develop as part of the present study. These models produce two-dimensional (2D) spatial distributions of particle energy and number flux as a function of some assumed driving parameters. They are generally limited to the northern hemisphere and rely on limited and instantaneous organizing/input parameters. For example, the highly successful and widely used Hardy et al. (1985) model is driven by the planetary Kp magnetic index whose time resolution is 3 h and prevents the model from capturing changes that occur on a shorter time scales, such as substorms. More recently, the series of oval variation, assessment, tracking, intensity, and online nowcasting (OVATION) models (Newell, Lee, et al., 2010; Newell, Sotirelis, Liou, et al., 2010; Newell, Sotirelis, & Wing, 2010) are driven by a different set of input data such as solar wind parameters and geomagnetic indices. The OVATION models produced a different paradigm of particle precipitation specification, one that has brought corresponding change in capabilities. OVATION uses solar wind parameters, making the implicit assumption that these parameters are the cause and the observed electron precipitation is the effect. Moreover, analysis of data from geospace (e.g., geomagnetic indices) and from LEO satellites shows that these parameters provide information of the simultaneous and global electron precipitation distribution (e.g., “state descriptors” [Gjerloev et al., 2018]). The success and adoption of the OVATION models (one of the most downloaded products from the National Oceanic and Atmospheric Administration [NOAA] Space Weather Prediction Center [SWPC] website <https://www.swpc.noaa.gov/products/aurora-30-minute-forecast>) give credence to these assumptions and allude to a central point of this study that rich information exists in the spectrum of heliophysics observational data, and that careful representation of this information can lead to profound progress.

However, existing models are ill equipped to provide the critical information to space weather users and to inform physics-based models and understanding. Much of the limitation is the result of shortcomings in information representation (in the form of using a limited set of state descriptors or creating representations that do not capture the complexity, e.g., nonlinearity, of the system). In the particle precipitation application, such shortcomings have resulted in models that are limited in their ability to reproduce observed features in highly dynamic (in both space and time) conditions. However, such features are produced during the frequent phenomenon of magnetosphere-ionosphere (MI) system reconfiguration and thus the quality of any model is limited, if the modeled variations in time and space are smooth.

Our development uses methods from the burgeoning field of machine learning (ML), made possible through new capabilities in the management, processing, analysis, and communication of data (i.e., data science) (McGranaghan et al., 2017) to increase the utility of the available data through identification of more representative relationships between potential drivers and particle precipitation. More explicitly, we examine the extent to which neural network ML methods can more capably capture complex nonlinear relationships between input (e.g., solar wind conditions and their time history) and output (total electron energy flux) than previous parameterizations which rely on lower dimensional relationships.

ML is often a misunderstood term, so it is important to explicitly identify our usage. We define ML in a broad sense, encompassing any approach that allows a computer system to learn from experience introduced in the form of data samples (T. Mitchell, 1997). This definition encapsulates a broad range of approaches, including linear regression, clustering, information theory, statistical modeling, and neural networks, to name a few. Timing is ripe to advance particle precipitation models through data science and ML for three reasons: (1) the availability of a large volume of high-quality data, (2) an understanding of

well-defined improvements to current models that are required to serve scientific and operational needs and a recognition of precisely how ML could be used to deliver such improvements, and (3) accessible adequate computational resources. Full reviews of such models have been given elsewhere, e.g., Machol et al. (2012); Newell et al. (2015); McGranaghan (2016).

We present a new nowcast model of total electron energy flux based on LEO measurements of electron precipitation, namely the Defense Meteorological Satellite Program (DMSP) satellites <https://cdaweb.gsfc.nasa.gov/pub/data/dmsp/> (Redmon et al., 2017), driven by a combination of solar wind parameters and state descriptors and their time histories. The advantage of this combination is that state descriptors and solar wind parameters allow for detailed nowcasting solutions, while the model also allows for forecasting with an increasing dependence on solar wind parameters as the forecasting extends into the future. We present the nowcasting results in this manuscript. Recognizing the need to more accurately represent the information in these data, we explore more capable (e.g., nonlinear) relationships between the input solar wind and state descriptors and output particle precipitation via ML. We do not address the myriad important operational considerations, such as various data latencies that must be considered to stream real-time data, in this first description of our new model.

Our approach is to align ML with an understanding of the physical system and robustly “interrogate” the resultant ML model. We carry out a comprehensive interrogation of the model at several levels. We hope that this approach will be an example for future ML investigations to better incorporate physics, provide greater insight to the ML model, and to produce more fruitful discovery within a “New Frontier” at the intersection of traditional approaches and state-of-the-art data-driven sciences and technologies (McGranaghan et al., 2017).

In terms of improving existing models, we address the following critical needs:

1. Utilize diverse observations: We develop a baseline model using DMSP data, but robustly interrogate using a wide variety of information, including auroral imagery data. Further, our approach is naturally extensible to any observation that provides particle energy fluxes
2. Establish more informative model inputs: In the evolution of precipitation models, it is clear that the input parameters dictated improvements and differences in capability. Moving from less (e.g., Kp) to more capable (e.g., the Newell et al., 2007 Coupling Function [NCF]) drivers allowed commensurate improvement in the specification of precipitation. We embrace this development and use ML to capture more capable (i.e., higher dimensional and with higher nonlinearity) drivers of the precipitation. In Section 5.1, we quantify the importance of the drivers and state descriptors for precipitation and
3. Capture finer-scale variations in space and time: Existing models are limited in their ability to reproduce observed features that are associated with steep spatial gradients and that occur rapidly. Such features, however, are produced as part of the frequent reconfiguration of the MI system (on average three times per day). Scientific and operational needs dictate specification at mesoscales (defined here to be 100s of km and 10s of minutes). Therefore, mesoscale and substorm-level spatial temporal specification is our context in this work.

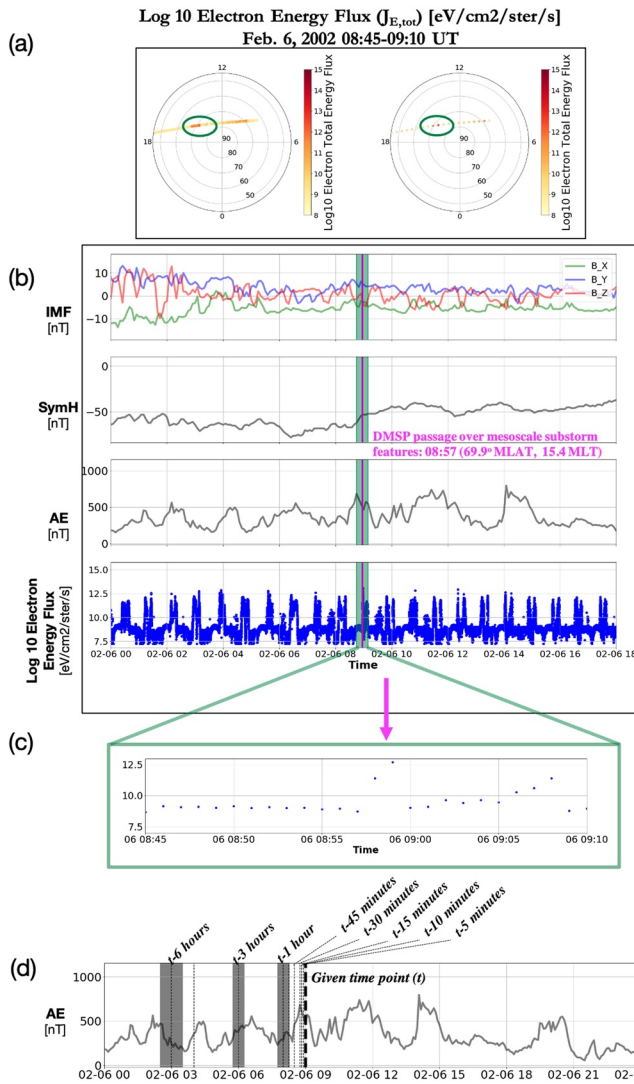
We present a new nowcast model of total electron energy flux trained on DMSP measurements of electron precipitation. The model is driven by a combination of solar wind parameters and state descriptors. The remainder of the study is laid out as follows: Section 3 details the landscape of the data supporting particle precipitation specification and our use of the opportunities afforded by it; Section 4 reviews the existing particle precipitation models, focusing on the OVATION models, and links the science needs to the use of an ML approach; Section 5 reveals our ML exploration process and the model discovered; and Sections 6 and 7 examine the model performance, discuss the findings, and conclude the study.

## 2. The Heliophysics and Space Weather Data Landscape in the Context of Particle Precipitation

The expanse of the heliophysics system makes it unrealistic to deterministically observe all components of the solar-terrestrial system simultaneously. Rather, our understanding relies on ingenuity in the combination of heterogeneous data sets; the problem is particularly important to particle precipitation, which must

link solar wind drivers to disparate representations of the magnetospheric and ionospheric states. Here, we provide detailed information about our preparation of the data (i.e., our data pipeline from the existing data archives to an “analysis ready” database [Ramachandran et al., 2018]) to: (1) give transparency to our methods and promote reproducibility and (2) to create a “challenge data set” published here: McGranaghan et al. (2020) around which this work can be expanded. Our data preparation is visually represented using an illustrative time period containing substorm behavior on February 6, 2002 when DMSP F13 passed over mesoscale undulations around 0857 UT presented in Figure 1. We emphasize that Figure 1 is not intended to be definitive, but simply to illustrate the complex relationship between solar wind and geomagnetic indices and particle precipitation and that our data preparation was carefully designed to allow our database to be representative of those relationships. This pass was chosen because F13 observed substorm-related mesoscale phenomena as analyzed by Lewis et al. (2005) and illustrates that our data processing both retains substorm-scale observables and contains the heliophysics system information needed to characterize such mesoscale behavior. The explicit data preparation steps are:

- (a) Obtain DMSP 1 s data and subsample (note it is important that we do not average) to a 1 min cadence from the NASA Coordinated Data Analysis Web (CDAWeb; <https://cdaweb.sci.gsfc.nasa.gov/index.html/>) system. The left polar plot of Figure 1a shows the DMSP F13 spacecraft during the period 0845–0910 at 1- second cadence, while the right shows the same trajectory, though with the 1- min subsampled data points. Colors represent the total electron energy flux values  $\left(\frac{eV}{cm^2 \cdot ster \cdot s}\right)$  on a log10 scale. This step includes a robust data quality check using flags in the DMSP data (Redmon et al., 2017). The green rings encircle a portion of the trajectory in which substorm behavior is observed that is explored in Figure 1c
- (b) Align with solar wind and geomagnetic indices (i.e., ionosphere and magnetosphere state descriptors) data. For each time stamp of the DMSP data, we attach the solar wind and geomagnetic activity indices data. Figure 1b shows the data for an illustrative subset (from top to bottom: solar wind interplanetary magnetic field [IMF, GSM coordinates], symmetric-H [SymH] index, auroral electrojet [AE] index, and the DMSP total electron energy flux observation). The geomagnetic activity indices are used as ionosphere and magnetosphere state descriptors (Borovsky & Valdivia, 2018). Again, we use flags to identify missing or questionable data as detailed by the CDAWeb system ([https://cdaweb.gsfc.nasa.gov/pub/000\\_readme.txt](https://cdaweb.gsfc.nasa.gov/pub/000_readme.txt)). Note that in the OMNI data within CDAWeb ([https://omniweb.gsfc.nasa.gov/ow\\_min.html](https://omniweb.gsfc.nasa.gov/ow_min.html): “High resolution (1 min, 5 min) OMNI: Solar wind magnetic field and plasma data at Earth’s Bow Shock Nose [BSN]”) the solar wind has been propagated to the magnetopause location and that we use these propagated data. The portion of the trajectory in Figure 1a that is circled in green is shaded green on this panel. The substorm identified by Lewis et al. (2005) is explicitly identified by the vertical magenta line and in the corresponding magenta text
- (c) Demonstrate that information on substorm activity is observed in the DMSP data. We zoom in on the shaded green portion of the time period to reveal that the subsampled DMSP total electron energy fluxes experience enhancements of two orders of magnitude during its passage of the substorm activity that permeates this short time span. The enhancement is representative of those observed in the 1-s data and analyzed by Lewis et al. (2005). Moreover, looking at Figure 1b, it is clear that the solar wind and selected geomagnetic activity indices data reveal correspondence
- (d) Add solar wind and geomagnetic activity data time histories. In step (b) we aligned the instantaneous features (solar wind and geomagnetic activity indices) to the DMSP observation data samples, but recognize that previous information from the solar wind and ionosphere and magnetosphere are also important to current particle precipitation and substorm behavior (Borovsky, 2020b, and references therein). In order to capture such information, we attach to the data samples the time histories of each of the solar wind and geomagnetic activity indices data. This process is detailed in Figure 1d for the AE index during the time period chosen. Previous approaches have for simplicity assumed that the instantaneous values of these data points are sufficient, however we recognize that the purpose of these time history data are different for near and far periods. For instance, over shorter time scales (from minutes to ~an hour), solar wind time history provides a snapshot of current conditions, while over longer time scales (from hours to years) the solar wind time history provides climatology or trend information. Therefore, we treat the previous time steps in two different ways: for all data points within 1 h of the DMSP observation, we include the instantaneous value and beyond that we gradually increase number



DMSP one-second data  
sub-sampled to one-minute

Align with solar wind and  
geomagnetic activity data

Substorm observables  
remain

Add solar wind and geomagnetic  
activity data time histories

(e)

		features						label		
		'solar wind'		'state of the magnetosphere & ionosphere'						
Training Data	Sample #1	$t_1$	Bz ( $t_1$ -6hr)	...	Bz ( $t_1$ )	...	AL ( $t_1$ -10min)	AL ( $t_1$ -5min)	AL ( $t_1$ )	$J_{E,tot}$ ( $t_1$ )
	Sample #2	$t_2$	Bz ( $t_2$ -6hr)	...	Bz ( $t_2$ )	...	AL ( $t_2$ -10min)	AL ( $t_2$ -5min)	AL ( $t_2$ )	$J_{E,tot}$ ( $t_2$ )
	⋮									
	Sample N	$t_N$	Bz ( $t_N$ -6hr)	...	Bz ( $t_N$ )	...	AL ( $t_N$ -10min)	AL ( $t_N$ -5min)	AL ( $t_N$ )	$J_{E,tot}$ ( $t_N$ )

Construct 'analysis ready data'

of data points centered on the  $t - x$  point over which an average is calculated, where  $x$  is any number of minutes before the time of the DMSP observation, for the  $t - 1$  h and  $t - 3$  h points we use a 30-min average and for the  $t - 6$  h point we use a 1 hour average. Together with the instantaneous aligned data shown in Figure 1c, the complete data set contains comprehensive information to specify and predict substorm-scale phenomena.

- (e) Construct “analysis-ready data” (Ramachandran et al., 2018). Figure 1e shows data samples construction, pulling from each of the panels above, utilizing “tidy data” guidelines considered a best practice in the data science community (Wickham, 2014). The outcome is data samples that each contain the driver (solar wind), state descriptors of the ionosphere and magnetosphere, and resultant DMSP observation. Together, the set of input data are referred to as “features.” In total more than 150 features are included, the full list is provided at <https://github.com/rmcgranaghan/precipNet>. The high dimensionality of these data both reveal the amount of information required to capture substorm-scale behavior in a particle precipitation model and motivate ML approaches as models capable of the requisite “expressive power.” It is trivial to expand the data used for this model or other ML models by preparing any data set that provides energy flux data in this analysis-ready format.

Subsampling the 1-s DMSP observations both reduces the data volume, which was important to computational feasibility for the expansive ML optimization process we applied (see Section 5.2), and improves the assumption that we make that DMSP observations are independent.

Two final points about data preparation. First, we remove observations that represent unrealistically large fluxes, deemed to be those exceeding the 99.995th percentile (equal to  $7.37 \times 10^{13}$  eV/cm<sup>2</sup>/sr/s or  $\sim 118$  erg/cm<sup>2</sup>/sr/s), which was empirically determined to separate values that were nonphysical. Second, we combine the northern and southern hemispheres. The sun-synchronous orbits of the DMSP spacecraft restricts their MLT coverage, necessitating the combination of northern and southern hemisphere observations to complete the local time coverage. This point has been well covered in previous works (e.g., Newell et al., 2015) and we do not belabor it here. However, we do attempt to combine the data according to recent understanding of hemispheric asymmetries (Laundal et al., 2017). Namely, the signs of the IMF  $B_y$  for the southern hemisphere data are reversed to align with the northern hemisphere data ([Laundal et al., 2017] and J. P. Reistad private communication). We have not altered the southern hemisphere data to account for local season, however, which may affect the model’s ability to capture seasonal variations.

The full database consists of 17 distinct years (1987–1988, 2000–2014) and 51 satellite years (DMSP generally has three operational satellites at any given time, which includes F6–F8 and F12–F18), constituting more than 1.9 million observations. In terms of the calibration of these instruments, the DMSP spacecraft each undergo an in-flight calibration (IFC) procedure (Emery et al., 2006). Note that the DMSP spacecraft began carrying a different version of the particle spectrograph instrument (SSJ/5) from the F16 satellite onward such that observations used in our database consist of both SSJ/4 (pre-F16) and SSJ/5 (post-F16). As a means of intersatellite calibration, the average IFC factor across all SSJ/4 and SSJ/5 instruments is used as a reference with which to normalize the individual IFC factors (R. Redmon and E. Holeman, personal communication, 2015) (McGranaghan et al., 2015). More information on the processing of DMSP data is provided by Redmon et al. (2017). We use the publicly available data and do not make further adjustments between satellites. As a final note on the SSJ instruments, the version of the DMSP data from CDAWeb that

**Figure 1.** Visual representation of the machine learning (i.e., analysis ready) data preparation steps for an illustrative time period containing substorm behavior on February 6, 2002 when Defense Meteorological Satellite Program (DMSP) F13 passed over mesoscale undulations around 0857 UT. (a) Polar plots of the DMSP F16 satellite northern hemisphere pass with one-second (left) and one-minute sub-sampled (right) total electron energy flux data. The green ovals circle indicate a period explored further in subplot (c). Data are shown in AACGM MLAT-MLT coordinates with noon MLT to the top of each polar plot and a low-latitude limit of 50°. AACGM = altitude adjusted geomagnetic coordinates; MLAT = magnetic latitude; MLT = magnetic local time. (b) Time series data for selected organizing parameters (the interplanetary magnetic field [IMF], top), Sym-H index (second row), and AE index (third row), corresponding to a given total electron energy flux (bottom row) for February 6, 2002. The vertical pink bar indicates a mesoscale undulation on the dusk side during the substorm expansion/recovery phase. Green shaded area corresponds to the green ovals in subplot (a). (c) Zoomed time series for green shaded period in (b), revealing that the subsampled DMSP data maintain information about mesoscale activity like substorms (the pink arrow points out the spike in observations corresponding to the undulation). (d) Visual demonstrating the calculation of time histories of each organizing parameter, shown here for the AE index where gray shaded regions and vertical bars represent distinct time history points at 6, 3, and 1 h prior to  $t = 0$  as well as 45, 30, 15, 10, and 5 min prior to  $t = 0$ . (e) Schematic of construction of the analysis ready data samples consisting of the organizing parameters and the corresponding DMSP total electron energy flux at a given time step as one row in the matrix.



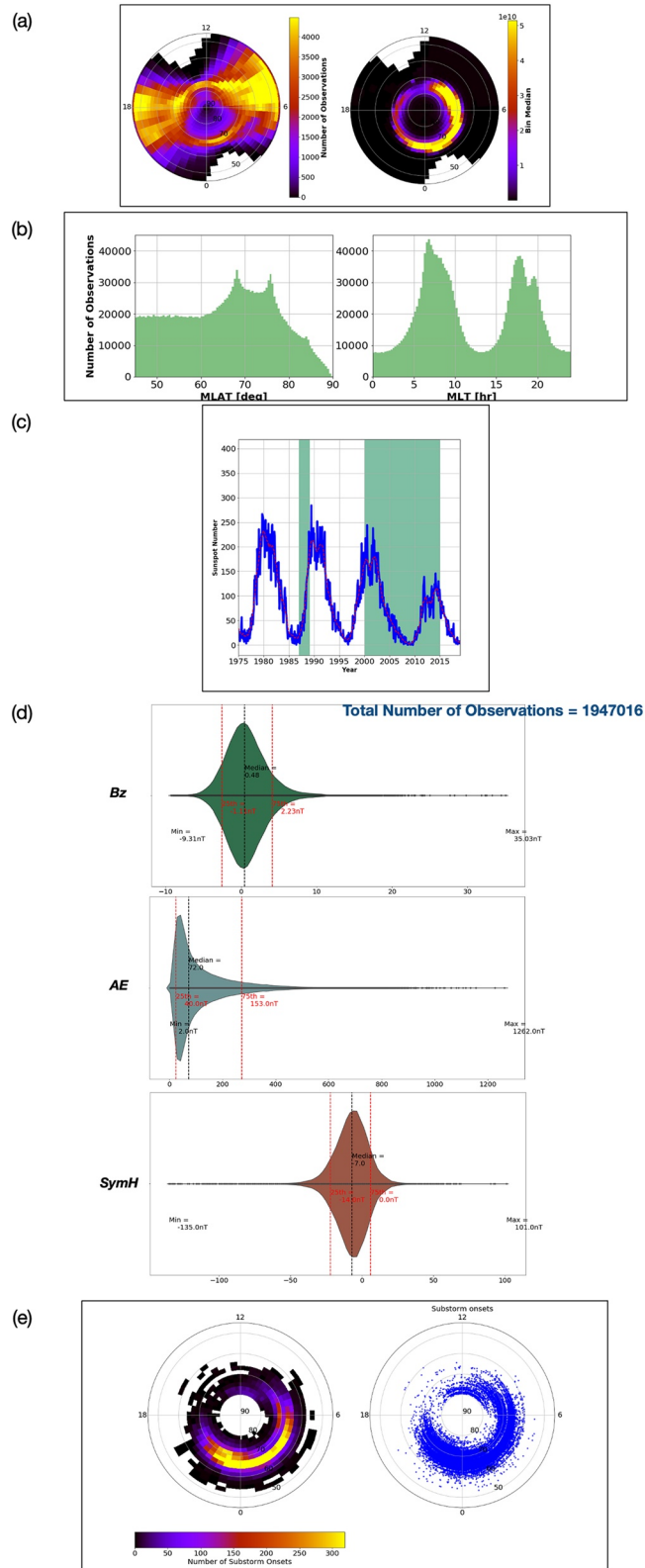
we have processed includes upgrades to the calibration factors to account for instrument degradation over time (Redmon et al., 2017).

We attempt to expose any biases in the data to understand the capabilities and limitations of the resultant model. Figure 2 shows the coverage provided by the data in multiple dimensions: (a) geomagnetic latitude; (b) magnetic local time; (c) solar activity; (d) geomagnetic activity; and (e) substorm occurrence (our context in this work).

Polar plots in Figure 2a reveal the magnetic latitude (MLAT)-magnetic local time (MLT) observational density and total electron energy flux binned median values in altitude adjusted geomagnetic coordinates (AACGM) MLAT-MLT coordinates with noon MLT to the top and a low-latitude limit of 50°. A resolution of 0.5 h MLT and 2° MLAT, sufficient to reveal gross spatial region biases in the database, for example, whether the dawnside contained more observations than the duskside, was chosen for these figures. To augment the observational density polar plot (left panel) Figure 2b shows histograms broken out by MLAT (left) and MLT (right). These figures reveal that there are natural, but limited, spatial biases in the DMSP observational database used for this study. The MLAT histogram shows minor peaks around 67° and 76°, which are due to the various orbits from the F6–F18 missions, with respect to the geomagnetic pole across the 1987–1988 and 2000–2014. There is a slight decrease in the number of data points poleward of 80° MLAT. The two more prominent peaks in the dawn and dusk MLT sectors (right panel of Figure 2b) reveal the inevitable impact of the DMSP sun-synchronous orbits and predominance of dawn-dusk orbital trajectories of the spacecraft. The left polar plot of Figure 2a spatially illustrates these trends. The median values of the total electron energy flux in the right panel of Figure 2a shows that unsurprisingly a strong signature of the auroral oval emerges in the precipitation data. Median values are shown to reduce the effect of extreme values, though disturbed oval activity is apparent in heightened values extending from ~64° to greater than ~72° MLAT in the midnight and postmidnight MLT sectors and in the dusk and post dawn MLT sectors, areas of predominantly discrete precipitation that is associated with geomagnetic activity (Newell, Sotirelis, & Wing, 2010).

Figures 2c–2e provide contextual coverage information for the DMSP database, beginning at the largest scale (the sun) and driving to finest scales in this work (substorms). Figure 2c shows the monthly mean sunspot numbers obtained and freely available from the Royal Observatory of Belgium, Brussels and their online Sunspot Index and Long-term Solar Observations (SILSO) service (<http://www.sidc.be/silso/home>). The blue trace shows the monthly mean sunspot numbers themselves, while the dashed red traces are the 13-month smoothed values. The portions of the plot shaded green are those for which observational data were used in this work. Those data cover 17 years, including two full cycles of ascending cycle (1987–1988 and 2009–2014), the full solar cycle from the maximum of solar cycle 23 (in March 2000) to the maximum of solar cycle 24 (in April 2014), and portions during solar minimum. Thus, the solar cycle is well sampled by our database.

Next, we examine the coverage at the global scale and as a function of geomagnetic activity. In Figure 2d, we emulate the informative presentation of geomagnetic coverage shown in Figures 1 and 2 of Welling et al. (2017) because it is a direct representation of the range of information over which a model will be useful and therefore serves the same purpose in both manuscripts. The  $B_z$ , AE index, and Sym- $H$  index are chosen to represent the activity of relevance to particle precipitation. Each parameter is represented using a violin plot that reveals the lower and upper quartiles (vertical dashed red lines and accompanying text), the median (vertical dashed black line and accompanying text), text labels for the extrema, and each individual data point as small black points to show the full range. The solid colored regions are the full distribution of the data mirrored over the center line. The median values ( $B_z = 0.48$  nT, AE = 72.0 nT, Sym- $H = -7.0$  nT) indicate that quiet conditions are the predominant behavior. However, the width of the violin plots show the breadth of conditions covered by the database, covering  $B_z$  conditions between  $-10$  and 35 nT, AE between 2 and  $>1,250$  nT, and Sym- $H$  reaching below  $-130$  nT. The ranges provide confidence that our model contains information from a robust variety of conditions. Although we show values for the full database, the values are essentially unchanged when isolating the training data (those used to develop the model and over which the model can be considered “valid”). We acknowledge that the DMSP database is  $B_y$ -dominant (Newell et al., 2004), meaning that the typical magnitude of  $B_y$ , the component of the IMF that is perpendicular to the Earth-Sun ( $X$ ) and projection of Earth’s dipole ( $Z$ ) on the plane perpendicular to  $X$  directions,



is significantly larger than the typical magnitude of  $B_z$  due to the predominance of the IMF to lie in the ecliptic.

Figure 2e examines the local or substorm-scale representativeness of our database. We obtained the list of all substorm onsets in the SuperMAG database (Newell & Gjerloev, 2011a, 2011b) for the time periods covered by the DMSP observations in our database and show both the scatter (right panel) and density (left panel) polar plots. The onsets reveal that peaks in substorm onset occur in the 22–24 MLT sector between  $\sim 66^\circ$  and  $72^\circ$  MLAT, in good agreement with previous analyses (Gjerloev et al., 2007, and references therein). However, substorm onsets are observed over a much more broad range of MLTs and MLATs and comparison with Figure 2a shows that these locations are well-sampled by the DMSP database.

Software to reproduce analyses in this manuscript and to extend the research are provided at <https://github.com/rmcgranaghan/precipNet>.

### 3. Particle Precipitation Modeling

We now briefly review a few of the most widely used auroral particle precipitation models, focusing on the needs that drive the development of a new model. Full reviews of such models have been given elsewhere (e.g., Machol et al., 2012; McGranaghan, 2016; Newell et al., 2015). These models are:

1. Hardy et al. (1985, 1987): Observations of auroral electron energy and number flux from the DMSP F2 and F4 spacecraft were compiled and used to produce statistical patterns on a  $2^\circ$  latitude  $0.5$  h local time grid parameterized by the Kp index
2. Fuller-Rowell and Evans (1987): Observations of energy flux and characteristic energy from the NOAA POES spacecraft were compiled and used to produce statistical patterns on a  $1^\circ$  latitude- $2^\circ$  ( $\sim 0.13$  h) local time grid parameterized by the hemispheric power index
3. Newell, Sotirelis, and Wing (2010): The OVATION: Observations of auroral electron energy and number flux from all DMSP spacecraft between 1988 and 1998 were compiled and used to produce statistical patterns parameterized by latitude ( $0.5^\circ$ ), local time ( $0.25$  h bins), and the NCF (Newell et al., 2007). OVATION has since become OVATION Prime where the “Prime” refers to an upgrade of the original model to provide information about the different types of contributors from diffuse, monoenergetic, and wave/broadband aurora.

Newell et al. (2015) provide a thorough breakdown of types of auroral particle precipitation models, principally categorized by their organizing parameters (solar wind, geomagnetic indices, or direct in situ particle precipitation observations). That work makes useful suggestions of needed future developments, many of which trace to a core need to better utilize more data. We briefly enumerate the salient suggestions from that work:

1. The organizing parameters of auroral particle precipitation models most strongly determine their predictive ability and utility
2. Simple binning of data does not produce capable results and
3. Direct in situ observations of the precipitation are invaluable to precipitation model development

**Figure 2.** Complete data coverage details: (a) MLAT-MLT observational density (left panel) and total electron energy flux binned median values (right panel) in AACGM MLAT-MLT coordinates with noon MLT to the top and a low-latitude limit of  $50^\circ$  at a resolution of  $0.5$  h MLT and  $2^\circ$  MLAT. AACGM = altitude adjusted geomagnetic coordinates; MLAT = magnetic latitude; MLT = magnetic local time. (b) Histograms of observational density broken out by MLAT (left panel) and MLT (right panel). (c) Universal scale contextual perspective: monthly mean sunspot numbers. The blue trace shows the monthly mean numbers themselves, while the dashed red traces are the 13-month smoothed values. The portions of the plot shaded green are those for which observational data were used in this work. (d) Global scale contextual perspective: geomagnetic activity relevant to particle precipitation represented by  $B_z$ , AE index, and Sym- $H$  index. Each parameter is represented using a violin plot that reveal the lower and upper quartiles (vertical red dashed lines and accompanying text), the median (vertical black dashed line and accompanying text), labels for the minimum and maximum to provide a sense of extrema, and each individual data point as small black scatter points to show the full range. The plot also shows the full distribution of the data mirrored across the center line. Wider sections of the violin plot represent a higher probability of observations taking a given value, the thinner sections correspond to a lower probability. (e) Local scale contextual perspective: substorm onsets in the Super Magnetometer Initiative (SuperMAG) database for the time periods covered by our database. Both the scatter (right panel) and density (left panel) polar plots are shown. SuperMAG = Super Magnetometer Initiative.

Our ML approach (see Section 4.2) responds to these needs, using information from the solar wind, geomagnetic indices, and direct observations to construct a new model.

### 3.1. Oval Variation, Assessment, Tracking, Intensity, and Online Nowcasting (OVATION) Model

The OVATION particle precipitation model was introduced by Newell et al. (2002) as a means to locate the auroral oval and specify the intensity of the auroral particle precipitation. The original version was developed for nowcast operational use and shares little resemblance to the later versions most often discussed in the literature. Later versions, called “OVATION Prime” models, serve the same purpose but are solar wind-driven (Newell et al., 2009), include seasonal variations Newell, Sotirelis, and Wing (2010), and distinguish the various types of particle precipitation. The first OVATION Prime is described in Newell, Sotirelis, and Wing (2010) and is the version of the model that we use for all work in this manuscript. The source code to run OVATION Prime is available from Janet Machol, Rob Redmon, and Nathan Case of the National Oceanic and Atmospheric Administration (NOAA) National Center for Environmental Information (NCEI) on Sourceforge (<https://sourceforge.net/projects/ovation-prime/>) and a Python implementation from Liam Kilcommons on GitHub (<https://github.com/lkilcommons/OvationPyme>). We used the Python implementation and for purposes of reproducibility have tagged the specific Github commit of OvationPyme used for this manuscript, which can be obtained from <https://github.com/lkilcommons/OvationPyme/releases/tag/v0.1.1>. This is also detailed in the PrecipNet Github repository. It is important to note two other variations on the model that exist: (1) an extension of the base model to better specify precipitation for  $K_p > 6$  using auroral imagery data from the Global Ultraviolet Imager (GUVI) on the TIMED (thermosphere, ionosphere, mesosphere energetics, and dynamics) satellite which was labeled OVATION Prime 2013; and (2) E. J. Mitchell et al. (2013) a different approach based on ground magnetometer data and fitting to a generalized auroral electrojet (AE) index, while using the DMSP particle precipitation observations to separate precipitation type and was called OVATION-SuperMAG (SM). These versions are not readily available and the operational model in use at NOAA SWPC is the 2010 version which motivated our use of that version. Extensive discussion, including clear distinction between versions, is provided in Newell et al. (2014) (for OVATION Prime 2010 vs. 2013) and Newell et al. (2015) (for precipitation model types, in general).

We consider OVATION Prime to be the “state-of-the-art,” and therefore the most appropriate focus of our comparisons, due to its high performance across a range of studies and validation efforts, using various criteria, and wide application (Machol et al., 2012; Newell, Sotirelis, Liou, et al., 2010).

### 3.2. Why a Machine Learning Model?

Newell et al. (2014) observe that to date most precipitation models have relied on a small number of discrete “bins” for the parameters that are used to drive the models (e.g., a  $K_p$ -based model such as Hardy et al., 1985 provides precipitation “maps” for each level of the 1–9 index), leading to a few discrete possible patterns with large jumps in between. The notable exception is OVATION which calculated linear regression fits of the auroral electron energy and number fluxes parameterized by the NCF (Newell et al., 2007), representing an advance over the more discrete approaches and reaping concomitant advances (Machol et al., 2012; Newell et al., 2014; and references therein). Considering the regression fit approach as an expansion of model “expressive power,” the ability of the model to represent observations, OVATION demonstrated that progress could be achieved through expansion of model capability through a more robust treatment of the input parameters (e.g., the NCF) and constructing a more continuous representation (e.g., regression fits instead of  $K_p$  parameterization).

Therefore, future advances are likely to come from similar expansions and ML represents a set of methodologies for precisely this context. Indeed, ML provides an algorithmic means to incorporate higher dimensional input parameter spaces (discussed in Section 5.1 below) and create models with greater expressive power. These possibilities come with their own challenges, such as overfitting (see, for instance, Chapter 11 of Hastie et al., 2001), which must be carefully addressed. Below we comprehensively introduce these design challenges and our approach through neural networks to produce models that reap the benefit of ML and attempt to overcome their challenges in a physics-informed and data-driven manner.

A final note of importance to the value of the ML approach is that OVATION relies on bins in latitude and local time, separately fitting a linear model in each bin. Therefore, the model produces discontinuous outputs across bins in a 2D map, while the ML approach, by design, produces 2D output continuous across grid points.

#### 4. Methodology to Address Existing Shortcomings in Particle Precipitation Modeling

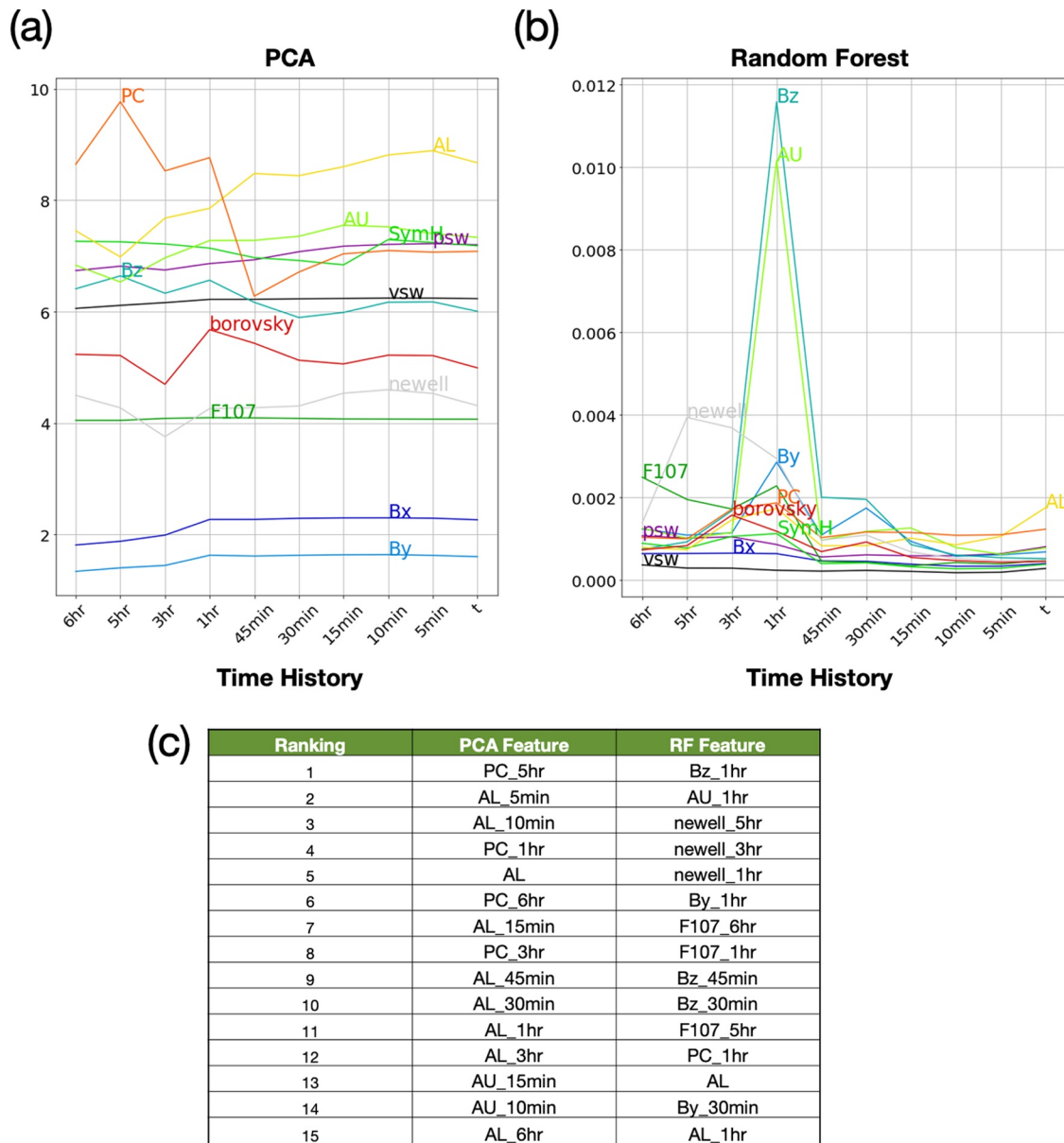
In this section, we identify the design space for ML studies and the specific experiments we used to make data-driven and physics-informed decisions across it. Our results are presented for the specification (i.e., nowcast) of total electron energy flux.

Given open questions about which variables are most important to the specification and prediction of particle precipitation (Newell & Gjerloev, 2011a; Newell et al., 2007, 2015), we give specific attention to this topic and then use these findings to provide details of the ML model developed.

##### 4.1. What Input “Features” are Most Important?

In ML parlance, “features” refers to the variables passed as input to the model. For instance, the feature for the OVATION models is the NCF (and, implicitly, the solar wind IMF, and velocity). Choice of features represents one of the most apparent ways by which physical understanding can inform ML model development. We recognized the need to expand the feature set and therefore have compiled a set of 153 input features (the full set of which can be found in the repository for this work: <https://github.com/rmcgranaghan/precipNet>), including the time history of features as individual features. These features were selected based on the likely existence of a physical relationship with high-latitude particle precipitation (see, for instance, the important discriminating factors identified by Borovsky & Valdivia, 2018; Lu et al., 2016; Newell et al., 2007; Ridley et al., 2004 for high-latitude particle precipitation). Additionally, past studies have shown that solar wind information alone is insufficient to characterize auroral behavior (e.g., changes in critical auroral parameters such as hemispheric power [HP] on substorm temporal scales [10s minutes] Newell et al., 2001; Newell, Lee, et al., 2010) and that quantification of the magnetospheric state and monitoring the global activity level are required for models that hope to capture substorm-scale phenomena (Deng et al., 2019; Liou et al., 1998; Newell, Sotirelis, et al., 2010; Nishimura et al., 2016; Richmond et al., 1998). These considerations drove the inclusive set of features that we explore in this work, compiling information from the solar wind (e.g., IMF  $B_z$ ), throughout the magnetosphere (e.g., the Borovsky coupling function), and the global activity level (e.g., the symmetric-H [Sym- $H$ ] index). Note that prior to the algorithmic feature importance exploration, first physical understanding was used to construct the possible features of use (this occurred in an International Space Sciences Institute [ISSI] working group [McGranaghan, 2019]).

However, higher dimensionality of input features (i.e., selecting more input features) may result in lower performance. Indeed, intercorrelations between the various solar wind features and intercorrelations between various geomagnetic activity indices mean that numerous features may carry information about other features and together be redundant Borovsky (2020a); Bentley et al. (2018); and references therein. Performance improvement can be gained by removing less informative features (Khalid et al., 2014). We used two feature importance algorithms to examine which of the inputs emerge as most informative. Figure 3 shows the results from: (a) principal component analysis (PCA) (Jolliffe & Cadima, 2016); and (b) random forest (RF) (Breiman, 2001). PCA linearly transforms the input variables by rotating them to align with their principal components, that is, new variables that are constructed as linear combinations or mixtures of the initial variables that represent the orthogonal directions of maximum variance. These directions are defined by the eigenvectors of the input features covariance matrix. In PCA, the importance is obtained by the magnitude of the values corresponding to a given feature in the eigenvector, and the final importance is the sum of the absolute value of these across the eigenvectors that together capture >90% variability in the DMSP observations. RF is a collection of decision trees, which operate by iteratively splitting data samples into two branches based on one input feature to attempt to create two sets from one where each new set has increased similarity and is distinct from the other split. Thus, the importance of a given input feature can be quantified by the amount by which variances in the split sets are reduced. With the RF approach,



**Figure 3.** Feature importance results for: (a) principal component analysis (PCA); and (b) random forest (RF). The y-axis is the magnitude of the importance and the x-axis is the time point of the parameter (i.e., “6 h” refers to the data points six hours prior to the Defense Meteorological Satellite Program [DMSP] observation for each feature). Each parameter is given a unique color that is consistent across both subplots and the corresponding textual label is placed at the time point of maximum importance. (c) A table showing the top 15 most important features from our analysis.

we average the importance for each input feature for many decision trees (100 in this work). Thus, both algorithms provide some measure of the relationship between an input feature and the target. Neither are perfect measures, but together they provide useful information when combined with an initial set of physically informed features. Note that we performed all feature importance analyses on non-normalized input features. We used 10-fold cross-validation (CV) (Hastie et al., 2001) to examine 10 separate cases of input data and plot the median of these 10 feature importance calculations. In Figure 3, we have removed features identified as redundant ( $V_{sw, x}$  and AE, whose information are fairly robustly encoded in  $V_{sw}$  and AU/AL). Using these results we can also determine the important time history steps to keep (note that the y-axis in the figure refers to the time history point for a given input feature such that the plotted point for “ $B_z$ ” at “3 h” indicates the importance of  $B_z$  three hours before the DMSP observation). It is perhaps meaningful to note that there is little overlap between the top 15 features in the PCA and RF importances (with notable

exceptions being the AL and PC indices and  $B_z$ ). PCA is a dimensionality reduction algorithm, compressing the feature space by identifying the strongest patterns. The fact that it shows geomagnetic indices as most important is indicative that these indices may contain the information provided by individual variables such as  $V_{sw, x}$ . On the other hand, RF is a feature selection algorithm that quantifies importance based on information gained when data are split based on any given feature (Janecek et al., 2008). The PCA scores, then, quantify a given feature's contribution to the principal components that explain most of the variance in the features, whereas RF quantifies the information gained based on variability of the target variable. Indeed, their difference is why we chose to present their results together and their differences and similarities provide the important collective information for our feature importance approach. Finally, we also acknowledge that the use of non-normalized features may affect the PCA and RF algorithms differently, contributing to differences.

The results in Figure 3 are not definitive, given for example, that intercorrelations between input features may be important and only recoverable through a detailed information flow or discriminant analysis, and thus the importances revealed must be taken with appropriate reservation. The results do, however, provide one means to assess the potential impact of input parameters that are useful when combined with the existing body of knowledge that is used to build the initial set.

From our feature importance analysis, we discovered that the solar wind velocity features ( $V_x/V_{sw}$ ) provide redundant information such that only one feature needs to be kept. The data also indicated that AE, being a combination of the AU and AL indices, could also be removed as a redundant input feature. These findings are consistent with intuition and the literature (e.g., Borovsky, 2020a). These redundant variables are not included in Figure 3. From the figure, though, we draw several conclusions that are applied in the ML development below:

- The auroral electrojet indices (AU/AL) are important, and their time histories appear to provide novel information
- $F_{10.7}$  is important, likely due to the importance of the preconditioning of the ionosphere in magnetosphere-ionosphere coupling research (e.g., Borovsky & Steinberg, 2006), yet our approach does not indicate that information exists in its time history (see the flat curve across time steps in Figure 3b), which is expected because the resolutions examined are beneath the daily temporal resolution of the index. This gives credence to our aggregation process;
- $B_x$  and  $B_y$  are relatively unimportant. We recognize that there are indeed circumstances where  $B_x$  is important (e.g., Laundal et al., 2018), but those are likely not prominent amidst the other effects in our large database.  $B_y$  is more generally important (e.g., Liou et al., 2018), but the impact is likely reduced in our need to combine the hemispheres to fill in spatial data coverage;
- Newell and Borovsky coupling functions are unimportant when individual solar wind variables and other geomagnetic activity indices are included. This likely points to the fact that this information is contained within those other features, albeit nonlinearly;
- The Sym- $H$  index,  $P_{sw}$ , and  $B_z$  and their time histories are critical;
- There is high variability in feature importance at the  $t - 1$  h and  $t - 45$  min time points, indicating that these may contain discriminative information
- $B_z$  peaks in importance near  $t - 1$  h and across time steps has more importance than  $B_y$  for the analysis that we applied
- The  $t - 5$  and  $t - 3$  h time history data points provide similar information, with some variables decreasing and others increasing across them such that we choose to include only the  $t - 3$  h point
- $t - 15$  min time history data points do not provide sufficiently novel information (for both PCA and RF the importance is flat from  $t - 15$  to  $t - 5$  min, so only one of the points need be kept);
- The time points to keep for our modeling are: 6, 3, and 1 h prior to  $t = 0$  and 45, 30, and 10 min prior to  $t = 0$ .

After our full feature importance analysis, the final set includes 73 input features. The full and reduced sets of inputs are available at the Github repository for this work.

#### 4.2. Final Features and Machine Learning Model Details

Like all models, ML models have parameters that must be chosen in some manner or hyperparameters. Hyperparameter determination is challenging, requiring both expertise, extensive trial and error, and informed feedback on performance. Exhaustive grid search of the hyperparameter space is inefficient and computationally prohibitive (Bergstra & Bengio, 2012), but there are methods to create greater efficiency in the search without sacrificing performance based on informed feedback (Bengio, 2012; Smith, 2018). The physics-informed and data-driven foundation detailed in the previous section allows our search to be more directed than if taking a purely brute force approach, and we hold some hyperparameters constant noting that for many data sets only a small subset of hyperparameters drive performance (Bergstra & Bengio, 2012). This study presents a neural network ML model for particle precipitation. Thus, our search was conducted over a hyperparameter space that included number of epochs (defined as one pass of an entire data set through the neural network), batch size, number of hidden layers and neurons in each hidden layer, the magnitude, and placement of dropout layers (Srivastava et al., 2014), and learning rate. The loss function used is the mean squared error (MSE).

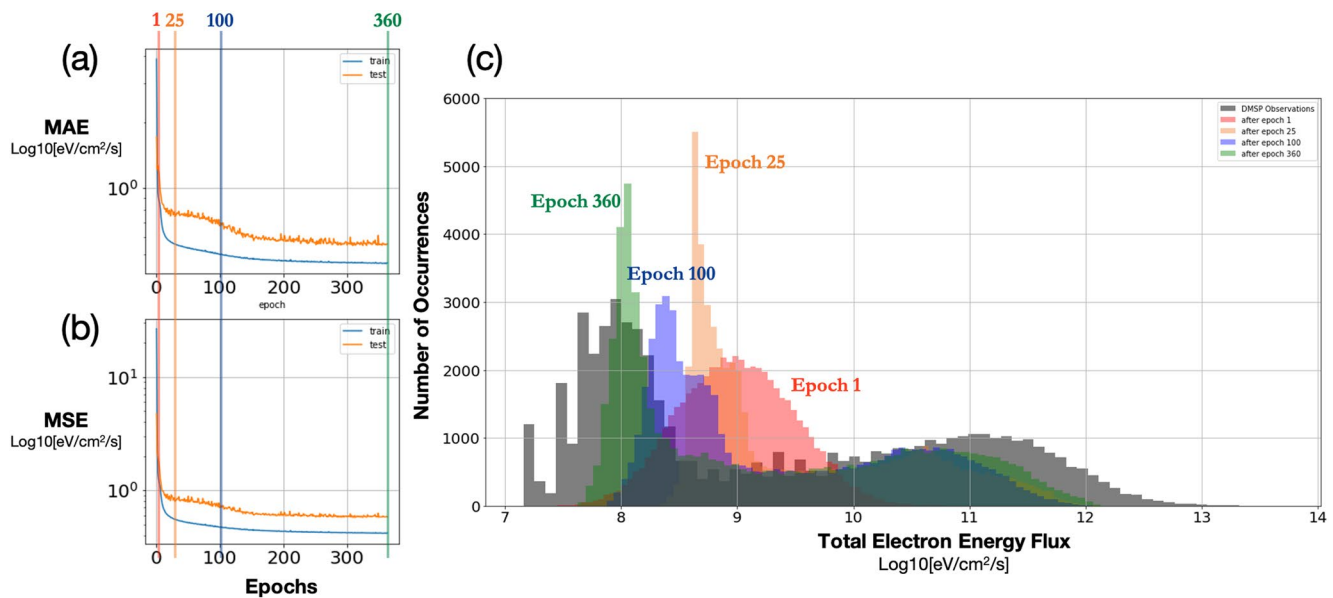
Assessing the capability of an ML model relies on splitting the data into training and validation sets (sometimes further dividing the training data into training and test sets). We divide our full database into training and validation sets. The training set is used to train the neural network, while the validation set acts as a database not shown to the model at training time and over which to examine model generalizability (i.e., how well the model has learned). Our withheld validation set consists of all DMSP F16 satellite data in the year 2010, more than 50,000 data points and over 1500 high-latitude passes. Taking a consecutive year of data for validation, rather than randomly sampling the full database, prevents influence by autocorrelations in the data (e.g., training with DMSP F16 and using the next data sample as a validation data point). Thus, our choice avoids data “bleeding” that can produce misleading model capability.

The final selected model hyperparameters are: epochs = 1000 (with an early stopping criterion to stop training, when improvement on the validation set on new epochs ends); batch size = 32,768; number of hidden layers = 8; dropout = 0.1 and located after the first hidden layer; and learning rate = 0.001. The network architecture consists of 10 layers, eight “hidden,” and was designed to create a bottleneck in feature space by first increasing and then decreasing the size of the layers (in terms of number of neurons) (Lamb et al., 2019), which acts similarly to an auto encoder (Rumelhart et al., 1986) and is useful when input features may exhibit correlations with each other. A visual and further description of the architecture are provided in the supporting information file.

Typically model design is guided simply by the loss calculated over the entire validation data set. However, more granular information is needed at training time to inform the design choices. A critical piece of additional feedback is to observe how the model architectures learn during training. We achieve this by observing how well each trained model matched the distribution of the DMSP validation set (chosen to be F16 data collected throughout 2010) across epochs of training. Figure 4 shows the ability of our final architecture to learn characteristics of the energy flux data during training. Figures 4a and 4b respectively show the mean absolute error (MAE) and MSE for the training (blue trace) and validation (orange trace) across training epochs. Epochs refer to the number of times that the learning algorithm works through the entire training data set. We highlight four epochs, the first, 25th, 100th, and final (360th, after early stopping) epoch as vertical bars on the plots and provide the corresponding histogram of model predictions for each epoch in Figure 4c. In the histograms, we provide the validation data distribution in black, which reveals that the data are clearly bimodally distributed, alluding to the complexity of these data and corresponding to the finding that electron precipitation data are bimodally or multimodally distributed, depending on location and activity level (Hardy et al., 2008). In Figure 4c, all data are provided in  $\log_{10} \left[ \frac{eV}{cm^2 \cdot s} \right]$  units. The x-axis shows the observational/predicted value while the y-axis provides the number of observations/predictions that fall in that bin.

After the first pass through the data the model predictions on the validation data show a unimodal distribution centered near the geometric mean of the DMSP validation data at  $9.2 \log_{10} \left[ \frac{eV}{cm^2 \cdot s} \right]$ . This would be like a prediction of all zeros to represent a sine curve and clearly is not skillful. Averages as representations for





**Figure 4.** Observing the model during training. (a) and (b) show the model loss over the training (blue trace) and validation (orange trace) on mean absolute error (MAE) and mean squared error (MSE) as a function of training epochs; (c) shows the histogram of total electron energy flux at four selected epochs overlaid on the actual Defense Meteorological Satellite Program (DMSP) validation observations (black histogram data). The snapshots are for 1 (red), 25 (orange), 100 (blue), and 360 (green) epochs. Corresponding vertical bars at these epochs are shown on (a) and (b). The corresponding model, which is used for all following results is hereafter labeled PrecipNet.

complex data sets are similarly of limited utility. As the epochs progress, however, the model progressively learns more complex representations of the data and is able to recover the bimodal distribution by epoch 360 (shown in green). The final representation does not capture the diminishing number of samples at the extremes, but the flattening of the training and test MAE and MSE loss curves in Figures 4a and 4b indicates that the model is no longer sensitive to new passes through the data and thus has stopped learning from them. The final model, including the trained weights, may indeed be useful to develop an extreme precipitation model through methods like transfer learning (Olivas et al., 2009, Chapter 9).

### 5. Comprehensive Evaluation and Discussion of PrecipNet: Multilevel Interrogation and Unification of ML and Physics Understanding (i.e., Explainability)

Robinson et al. (2019) thoroughly explored the issue of validation of auroral electrodynamic models. Their findings included: to constrain the number of metrics for auroral electrodynamic parameters, some compromises are inevitable; good metrics are those that reflect overall improvement in model capability for all or most applications; and metrics are most useful when they not only assess the validity and accuracy of models, but also provide information about the source of model strengths or weaknesses. They acknowledge the challenge and corresponding absence of “ground truth” data, requiring multifaceted approaches to evaluation. Thus, we have formulated an interrogation across three levels: (1) standard assessment metrics, a set compiled based on the recommendations above unified with those from Liemohn et al. (2018); (2) comparison with a model deemed the “state of the art” (OVATION Prime for this work); and (3) ability to reproduce known physical phenomena. The framework itself is a key contribution of this work, unifying recommendations for model evaluation across heliophysics and space weather model evaluation (Barnes et al., 2016; Bloomfield et al., 2012; Leka et al., 2019; Liemohn et al., 2018; McGranaghan et al., 2018).

**Table 1**  
Model Evaluation Metrics

Metric	Equation	Significance/Value	Shortcoming
PE	$1 - \frac{\sum(y_i - \hat{y}_i)^2}{\sum(y_i - \bar{y})^2}$	% of target variable variation explained by a linear model	Cannot determine whether predictions are biased; Does not indicate whether model is adequate
Intercept of linear fit	$mx + b$	Bias of the model	
Slope of linear fit	$mx + b$	Ability of the model to represent the mean of the observations	
Root mean squared error (RMSE)	$\sqrt{\frac{1}{N} \sum(y_i - \hat{y}_i)^2}$	Quadratic mean of the difference between model and observations	It is an aggregate and larger errors have a disproportionately large effect
Mean absolute error (MAE)	$\frac{1}{N} \sum( y_i - \hat{y}_i )$	Average absolute different between model and observations	Disregards sign of the error

In the table,  $y$  is the Target variable (e.g., the observation),  $\hat{y}$  is the model prediction, and  $\bar{y}$  is the mean of the observations. MAE, mean absolute error.

### 5.1. Interrogation Level #1: What is the Model Performance Across Standard Assessment Metrics on Novel Data (i.e., Validation Data)?

We first test the model on standard assessment metrics. The metrics we examine follow Liemohn et al. (2018) and are described in Table 1, consisting of: linear fit intercept and slope, coefficient of determination, root mean square error (RMSE), and MAE.

A word of note on coefficient of determination: we define this metric as the Nash-Sutcliffe model efficiency coefficient (Nash & Sutcliffe, 1970). It is sometimes called prediction efficiency, so we use the label “PE” for this metric. Our definition of PE can be negative, indicating that the mean of the data is a better fit to the observations than the predicted values. Figure 4c revealed a bimodal nature of the DMSP data in  $\log_{10} \left[ \frac{eV}{cm^2 \cdot s} \right]$  space which is an important characteristic that any model must capture. This definition of PE provides information about model capability to capture such behavior. Further discussion of all metrics can be found in Liemohn et al. (2018).

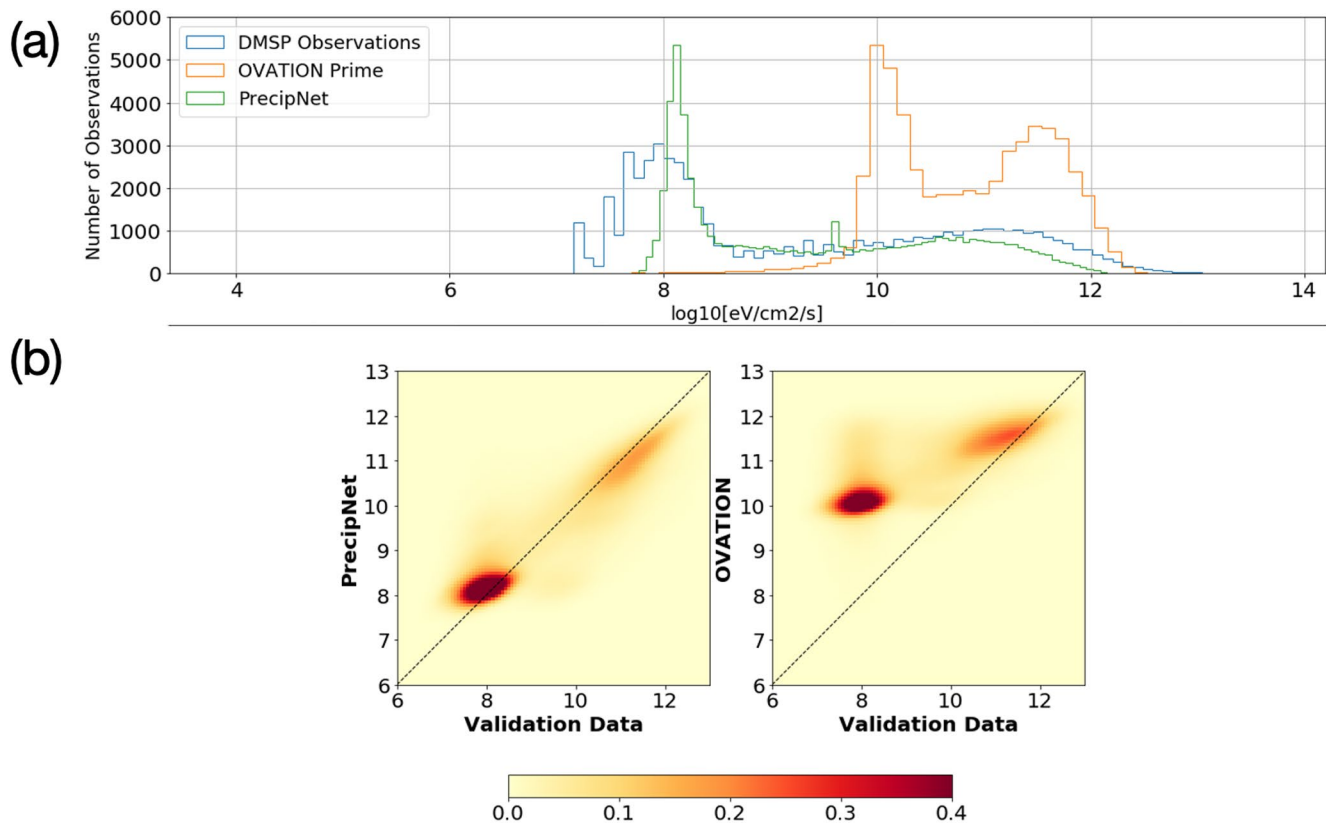
Table 2 summarizes the PrecipNet model over these metrics. For each metric, we use the data in units of  $\log_{10} \left[ \frac{eV}{cm^2 \cdot s} \right]$  for the calculation, the same units used to train PrecipNet. The values reported are for the full set of validation data.

The presence of many interdependent factors in space weather data require models developed with them to provide a measure of uncertainty (Morley, 2020). Therefore, in Table 2 and in the time series analyses that follow, we provide this measure for PrecipNet using CV. In CV, different models are created from subsets of the data (cross folds) for which each cross fold is a distinct set of data to train and test the model on. For all CV results we choose the cross folds in a stratified manner. That is, we create 15 bins for the observations based on the magnitude of the energy flux and ensure that each cross fold set preserves the percentage of

samples in each bin. For each cross fold, the full training data are divided such that a unique test set is withheld and the model evaluated over the validation data set. We use 10-fold cross validation (meaning we repeat the process 10 times), a general heuristic, and deemed robust for Heliophysics applications (Bobra & Couvidat, 2015). The final uncertainty is then the standard deviation across the 10 separate realizations of the model. This is like having a panel of “experts,” each having developed a different understanding of the problem (developed through different information provided to them) and allowing a better understanding to emerge from the aggregate. The value of this approach has been well described in discussions of ensembling for space weather (Morley et al., 2018; Murray, 2018).

**Table 2**  
Model Evaluation Metrics for the machine Learning Model (PrecipNet) and the “State-of-the-Art” Oval Variation, Assessment, Tracking, Intensity, and Online Nowcasting (OVATION) model

Metric	PrecipNet (mean $\pm$ 1 $-\sigma$ )	OVATION
PE	0.751 $\pm$ 0.007	−0.512
Intercept of linear fit	2.632 $\pm$ 0.248	7.588
Slope of linear fit	0.717 $\pm$ 0.027	0.348
RMSE	0.764 $\pm$ 0.011	1.887
MAE	0.558 $\pm$ 0.019	1.574



**Figure 5.** Density estimates of the model predictions against the DMSP validation data. (a) Histogram of DMSP validation data in blue with the same data as determined by the OVATION Prime (red) and PrecipNet (green) models superimposed. (b) 2D Gaussian kernel density estimate for PrecipNet (left) and OVATION (right). Superimposed are dashed black lines indicating Observation = Prediction. The data in both density estimates are in units of  $\log_{10} \left[ \frac{\text{eV}}{\text{cm}^2 \cdot \text{s}} \right]$  units. DMSP, defense meteorological satellite program; OVATION, oval variation, assessment, tracking, intensity, and online nowcasting.

Abbreviations: MAE, mean absolute error; OVATION, oval variation, assessment, tracking, intensity, and online nowcasting; RMSE, root mean squared error.

Table 2 reveals that the ML model explains 75% of the observed variation in the data ( $PE = 0.75$ ) and attains an MAE below 0.6. Comparison of these metrics with those of the OVATION Prime model reveals improved performance for the data tested over the metrics examined. The negative PE value for OVATION Prime indicates that the mean of the data provides a better fit to the observations than the model predictions. Figure 5a helps further understand this outcome by showing the OVATION Prime predictions of the DMSP validation data as a histogram. We see that OVATION Prime predicts values largely in the high energy portion of the distribution of DMSP validation observations, statistically overestimating the energy flux, which we discuss below is due to spatially spreading energy flux information more broadly than the observations suggests. Such spreading limits or prevents the capture of mesoscales by many existing particle precipitation models. As a result, we find that a somewhat consistent overestimation of fluxes at subauroral and polar cap latitudes is a strong reason for OVATION's negative PE value.

We acknowledge that OVATION uses only solar wind variables as input (the NCF depends on the IMF and the velocity), whereas PrecipNet also include geomagnetic activity indices such that the comparison is not one-to-one. To provide a closer comparison, we created a version of PrecipNet that only uses solar wind input (keeping all time history points). We find that for these summary metrics accuracy is only slightly degraded (the SW-only model attains an MAE of  $\sim 0.6$ ). This may seem counter intuitive or surprising, but further investigation revealed that while the aggregate skill of the model is only moderately degraded, the location of the errors is affected. The SW-only model provides the same improvement at extra-auroral latitudes where fluxes are generally quite low, however within the  $60^{\circ}$ – $75^{\circ}$  MLAT band there is a degradation

in model accuracy using only SW inputs. A full comparison is more appropriate for a stand-alone piece and is the focus of future work.

### 5.2. Interrogation Level #2: What is the Model Performance Against the “State-of-the-Art”?

The summary metrics in Table 2 can be misleading if not taken with rigorous supporting interrogation. For instance, space weather data are often “quiet” or undisturbed, producing heavily imbalanced data sets (McGranaghan et al., 2018). A model that predicts nothing but the quiet conditions, missing the dynamics that are most important in space weather modeling, may produce low RMSEs and MAEs, yet may be quite incapable for space weather modeling needs. Thus, all model interrogation must take the important next step to understand the model characteristics beyond summative metrics.

First, we would like to determine how well the model captures important characteristics in the data, one of which we already described the bimodal nature. Figure 5a shows the histogram (one-dimensional density estimate) of DMSP validation data in black with the same data as determined by the OVATION (red) and PrecipNet (green) models superimposed. Data are shown in  $\log_{10}\left[\frac{eV}{cm^2 \cdot s}\right]$  units. The  $x$ -axis shows the observational/predicted value while the  $y$ -axis provides the number of observations/predictions that fall in that bin. Figure 5b are 2D Gaussian kernel density estimates for PrecipNet (left) and OVATION (right). The colorbar shows the probability of the model predicting in a given bin across the space of total energy fluxes using a  $100 \times 100$  bin grid.

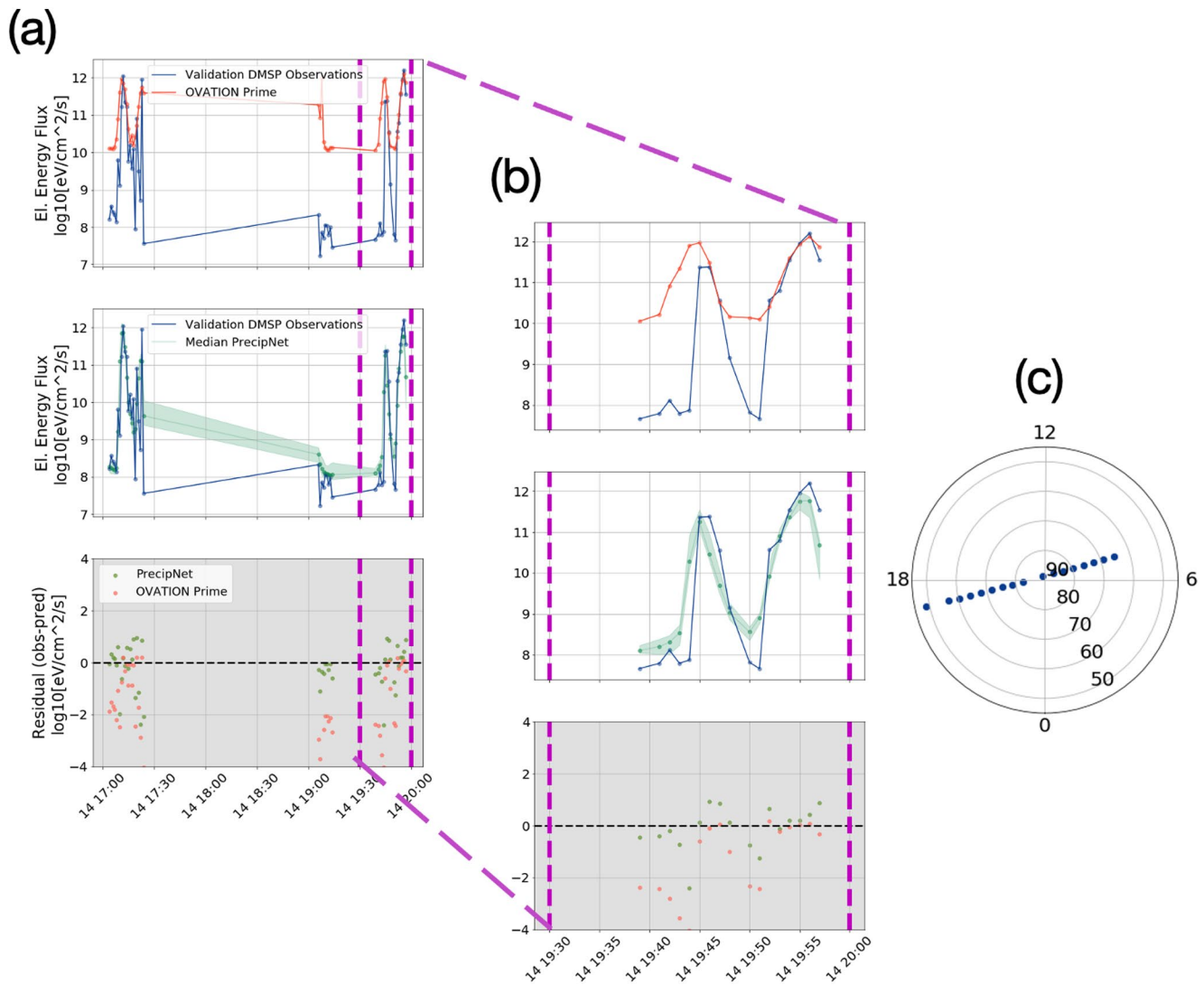
It is clear from Figure 5a that both OVATION and PrecipNet indicate a bimodal distribution in the data, however only PrecipNet accurately locates the electron energy flux values ( $x$ -axis) of the peaks in the distribution of the DMSP validation data that are provided in blue. OVATION’s overestimation of the energy flux is indicative of a spreading of information that results in an inability to capture dynamic boundaries that emerge between low and high precipitation. PrecipNet distinguishes the low and high flux regions by their appropriate magnitudes.

The improved agreement is supported by the 2D density estimate in Figure 5b. Observation = Prediction lines are superimposed on the color maps (dashed black lines). PrecipNet and OVATION have Pearson’s correlation coefficients of 0.87 and 0.70, respectively.

The trends from studying the density estimates of validation data (which represent more than 1,500 DMSP F16 passes) can be more clearly and granularly seen in Figure 6, which shows the PrecipNet and OVATION Prime model results as compared with the validation data on time series. For this study, we select one representative time period (November 14, 2010 17:00–21:00 UT) and provide results over the full time range (Figure 6a) where the top panel illustrates the DMSP observations (blue trace) and OVATION output (red trace), the middle panel plots the same DMSP observations with PrecipNet predictions (median as the solid line and one-sigma standard deviation as the envelope from the CV results), and the bottom panel shows the residuals for both models (PrecipNet as green points and OVATION as red). The tendency toward overestimation by OVATION is clearly demonstrated where low flux values are biased upward and corresponding dynamic boundaries are inaccurately specified. PrecipNet more accurately specifies the low fluxes and the mesoscale transition to high fluxes throughout the time period (notice the rise at  $\sim 0943$  UT takes about 1 min for PrecipNet ( $\sim 400$  km) but roughly 3–4 min for OVATION). The residuals (observation–prediction) on the bottom panel for PrecipNet (green points) are scattered around zero with little structure, whereas there is both bias and structure in the OVATION residuals (blue points). Figure 6b zooms in on a single pass from 19:30 to 20:00 UT, the ground track for which is shown in the inset Figure 6c. The single pass more closely shows the accuracy of PrecipNet’s reconstruction of the energy flux and uncertainty bounds that nearly contain the extrema in the data. Further case studies, including multi-platform observations, will be the focus of follow-on work.

### 5.3. Interrogation Level #3: Can the Model Reproduce Known Physical Phenomena?

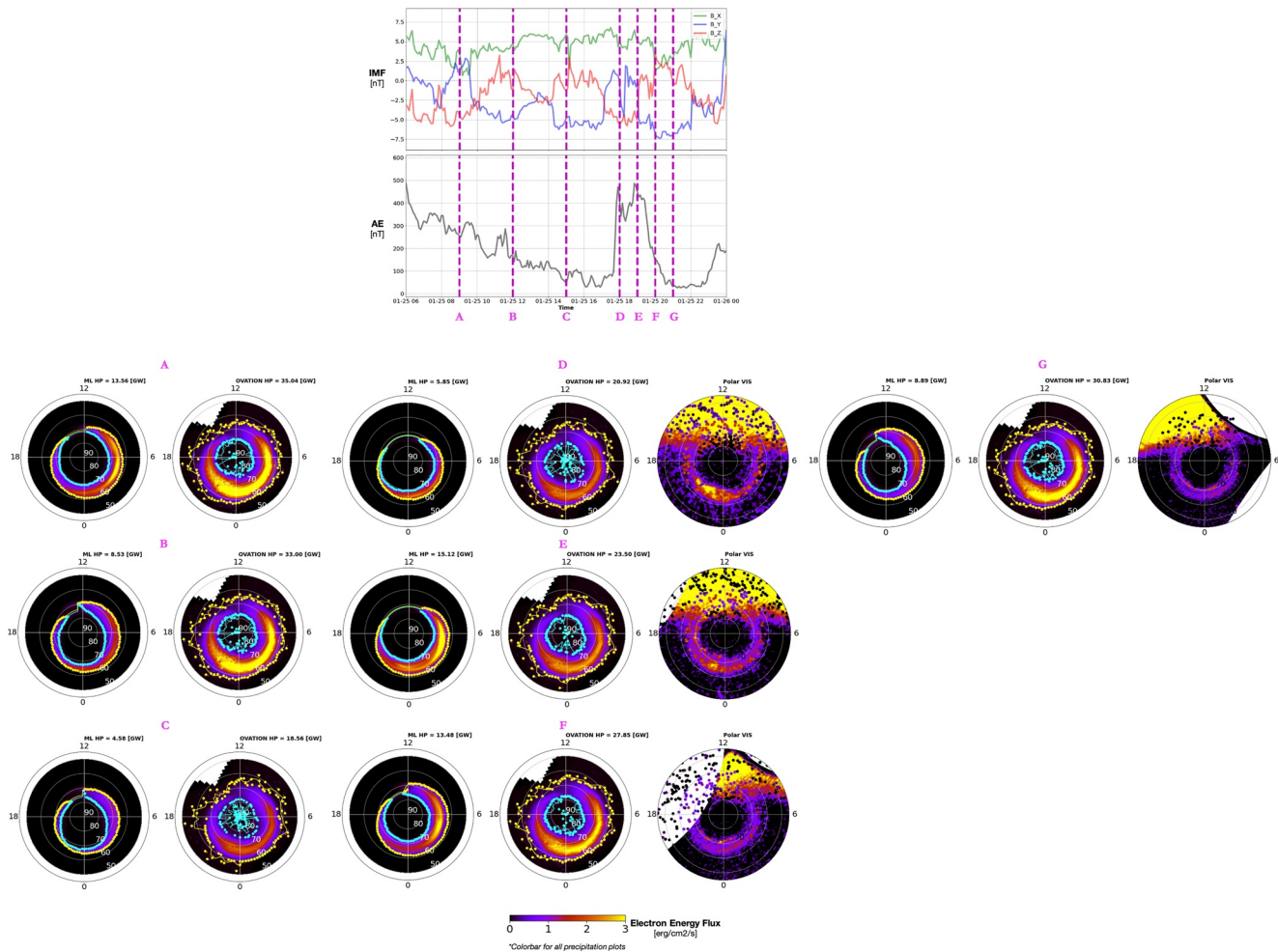
One of the most important aspects of the ML approach is the ability to create global, time-dependent specification and prediction (Bortnik et al., 2016) to evaluate the model performance on known physical



**Figure 6.** Comparing PrecipNet and OVATION Prime for the validation data time series. For all data points in the validation set (DMSP F16 throughout 2010), PrecipNet and OVATION Prime are evaluated at the location of the satellite. We select a representative time period (November 14, 2010 17:00–21:00 UT). (a) Three-panel plot for the full time range with the top panel showing the DMSP observations (blue trace) and OVATION output (red trace), the middle panel plotting the same DMSP observations with PrecipNet predictions (median as the solid line and one-sigma standard deviation as the envelope from the cross-validation results), and the bottom panel showing the residuals for both models (PrecipNet as green points and OVATION as red); (b) Three-panel plot showing the same information, except zoomed into 19:30–20:00 UT; and (c) the polar ground track of DMSP F16 during the zoomed time. DMSP, defense meteorological satellite program; OVATION, oval variation, assessment, tracking, intensity, and online nowcasting.

phenomena. Figure 7 reveals an analysis of the PrecipNet model to reconstruct global high-latitude maps of total electron energy flux on January 25, 2000, an event selected for the geomagnetic and substorm conditions and the data coverage by the Global Geospace Science Polar satellite Visible Imaging System (VIS) (Frank et al., 1995).

January 25, 2000 is a unique period due to the range of conditions and phenomena it covers, including gradual changes geomagnetic activity and an isolated substorm. Coupled with the availability of quality Polar VIS observations during the substorm, it is an ideal time period for evaluation. For seven selected snapshots (A–G) indicated by vertical purple lines on the time series plots in Figure 7, we provide global polar high-latitude maps for PrecipNet (left) and OVATION (right). The top time series panel shows the x- (green), y- (blue), and z-components (red) of the IMF and the second from the top is the time series of the AE index. All polar plots show the northern hemisphere with the sun to the top of the figure, MLT around the dial, and white rings in 10° MLAT increments down to 50°. Superimposed on the model polar



**Figure 7.** Model interrogation of known physical phenomena. Results of the PrecipNet and OVATION models are produced for seven discrete times throughout January 25, 2000. The top time series panel shows the interplanetary magnetic field (IMF) x- (green), y- (blue), and z-components (red). The next time series shows the auroral electrojet (AE) index. During steps D–G a substorm occurs, beginning at 17:45 UT at  $68.71^\circ$  magnetic latitude (MLAT) and 23.13 h magnetic local time (MLT) as observed by the SuperMagnetometer initiative substorm database. At all steps indicated by vertical purple lines on the time series we provide global polar high-latitude maps for PrecipNet (left) and OVATION (right). During the substorm, Polar satellite Visible Imaging System (VIS) data are available and are included (far right). All polar plots show the northern hemisphere with the sun to the top of the figure, MLT around the dial, and MLAT extending to  $50^\circ$  and white rings in increments of  $10^\circ$ . Superimposed on the model polar plots are the auroral region boundaries (polar = bright blue and equatorward = bright yellow) as determined by the  $0.2 \frac{\text{erg}}{\text{cm}^2 \cdot \text{s}}$  threshold. The hemispheric power estimates for each model map are provided at the top of the polar plot. The color bar at the bottom shows the color scale for all PrecipNet and OVATION maps  $\left( \left[ \frac{\text{erg}}{\text{cm}^2 \cdot \text{s}} \right] \right)$ , while the Polar VIS data are shown in units of Rayleigh's. OVATION, oval variation, assessment, tracking, intensity, and online nowcasting.

plots are the auroral region boundaries (polar = cyan and equatorward = bright yellow) as determined by a  $0.2 \frac{\text{erg}}{\text{cm}^2 \cdot \text{s}}$  threshold independently for each MLT bin at each UT. This is an approach identified by NASA's Community Coordinate Modeling Center's auroral model evaluation plan and is related to findings from (Zhang & Paxton, 2008). If the 0.2 threshold is not exceeded, no boundary is indicated. In the title to each polar plot, we provide estimates of the total electron precipitation hemispheric power for each UT, obtained by integrating over  $50\text{--}90$  MLAT and over all MLTs. Note that there are several approaches to making this calculation (particularly with how to calculate the hemispherically integrated area), with little to no ground-truth hemispheric power to compare against, so we avoid absolute evaluation of the HP values, focusing instead on a relative comparison between PrecipNet and OVATION Prime. Finally, both PrecipNet

and OVATION Prime are evaluated and visualized using the native OVATION grid ( $0.5^\circ$  MLAT  $\times$  0.25 MLT) for consistency. PrecipNet can be evaluated at arbitrary resolution.

Over 06:00–15:00 UT there is a gradual decrease from a geomagnetically active condition to extreme quiet, as indicated by the steadily decreasing AE index and the turning of the IMF z-component to near zero or northward conditions. Polar plots for snapshots A–C show that both models track the contracting auroral oval both in intensity and location of the oval. PrecipNet's equatorward boundary moves from below  $60^\circ$  MLAT at midnight MLT to near  $65^\circ$ . As is characteristic over all times, OVATION specifies a broader auroral oval with both higher MLT-to-MLT bin variability at a given UT snapshot and smaller variation across UT snapshots (cf. the nightside equatorward oval remains relatively stationary over the snapshots). This behavior reveals two important points: (1) PrecipNet captures more dynamic auroral boundary behavior that is important to dynamics of the high-latitude auroral region; and (2) there are periods during which PrecipNet's specification of the breadth of the oval may be too slight, resulting in smaller estimates of the hemispheric power. For both models, moving into extreme quiet from B to C there is roughly a 50% reduction in the hemispheric power estimates.

During steps D–G, a substorm occurs, beginning at 17:45 UT and  $68.71^\circ$  magnetic latitude (MLAT) and 23.13 h magnetic local time (MLT) as observed by the SuperMAG initiative substorm database (Newell & Gjerloev, 2011b). For each of these steps, we also display the available Polar VIS global auroral emission data [kRayleighs] which observed this substorm. At step D, Polar VIS data show a brightening centered at  $65^\circ$  MLAT and 22 MLT that is not prominently seen in either auroral model. However, PrecipNet indicates a faint increase across the premidnight to 06 MLT sectors at  $65^\circ$  MLAT roughly corresponding to the VIS data. There is no discernible increase in the OVATION output. At step E, the AE index and VIS data indicate that the substorm is sustained. Here, PrecipNet specifies a large increase in the breadth of the auroral oval, expanding both equatorward and poleward consistent with known oval dynamics during activity (Akasofu, 2017) that is not captured by OVATION Prime, and a brightening in the premidnight MLT sector with striking correspondence to Polar VIS. From E to F, the OVATION auroral oval grows in intensity while PrecipNet and Polar VIS indicate a waning, corresponding to the significantly reduced AE index. The snapshots taken throughout the substorm provide evidence that PrecipNet is capable of mesoscale and particularly substorm-scale specification.

It is important to note that we do not expect a one-to-one correspondence between the particle precipitation maps and the Polar VIS imagery maps. Rather the correspondence is qualitative and provides insight specifically to important features and auroral behavior. This is due to a number of effects, including DMSP capturing precipitation that does not make visible light, convolved effects in the auroral imagery data, and different temporal and spatial resolutions between the imagery and the model. For instance, the Polar VIS data are sensitive to emissions from both electron and proton precipitation (Frank et al., 1995), though PrecipNet only quantifies electron precipitation. For instance, in Figure 7e PrecipNet specifies an enhancement in the 04–06 MLT sector that is not as pronounced in the Polar VIS imagery. Precipitation in this sector is predominately diffuse, which may drive less intense emissions. We suspect that the cause of such differences is a combination of the reasons listed above and will be investigated further with detailed case studies that incorporate new platforms such as incoherent scatter radar to more fully diagnose. Nonetheless, to zeroth order, Polar VIS brightnesses are proportional to energy flux. The PrecipNet model more faithfully represents fine details apparent in the imagery data, including a brightening across midnight sector local times at 1900 UT, when Polar VIS observes strong activity associated with a classic substorm in that sector (Figure 7e).

By evaluating PrecipNet in the context of physical phenomena, we allow the performance to be judged through physical understanding. This represents a layer of explaining the ML results, and allows physics-informed improvement of the model. This is one method to accomplish “theory-guided data science” (Karpatsch et al., 2016) and “computer-aided discovery” (Pankratius et al., 2016), critical areas of development for the “New Frontier” of scientific discovery in the digital age (McGranaghan et al., 2017).

#### 5.4. Discussion: Identifying and Facilitating Next Steps for a Community of Particle Precipitation Modeling

We have produced a new model of electron precipitation making new use of cutting-edge tools and capabilities from the fields of data science and ML. We are quite aware that previous efforts have produced similarly profound advances. These efforts include, for instance, those of three other working groups across the community: (1) The auroral precipitation and high-latitude electrodynamics (AuroraPHILE) Community Coordinated Modeling Center (CCMC) working group; (2) the G1-03 (auroral electrodynamics) Working Team under the G1 Cluster (Geomagnetic Environment) as part of the Committee on Space Research (COSPAR) International Space Weather Action Team (ISWAT); and (3) the Geospace Environment Modeling (GEM)-Coupling, Energetics, and Dynamics of Atmospheric Regions (CEDAR) Conductance Challenge Working Group.

Our approaches already identify areas of future exploration, including other means of assessing the importance of features (Section 5.1) and examining ML model hyperparameters (Section 5.2). However, to align this work with the ongoing community efforts we also provide suggestions for particularly important areas of next investigation:

- Introduce new precipitation databases: much like the series of OVATION models, it is clear that improvement is possible through an increase in coverage of input data (both spatially and in terms of geomagnetic activity). Our approach is naturally extensible to any other data that provide energy flux as a function of position. The only task is to prepare those data in the same format as the input samples described above (see Figure 1). An immediate next task is to grow the model with the Fast Auroral Snapshot (FAST) Explorer electron precipitation database, accounting for differences arising from the distinct orbits of the FAST and DMSP spacecraft
- Extend the model using magnetometer data: There is strong evidence that local measurements from magnetometers provide information about local precipitation behavior (Newell & Gjerloev, 2011a; Newell et al., 2015). Therefore, an important extension of this work is the incorporation of magnetometer data. The structure of our data preparation and analyses is indeed particularly designed to facilitate such extensions. One only has to determine the local magnetometer information, either through conjunctions with DMSP observations and ground-based magnetometer stations or through the use of several “beacon” magnetometer measurements (a subset of magnetometers chosen to be representative of different MLAT-MLT sectors). Using local measurements may recover information that is lost in the aggregation of those data into global indices (e.g., Kp)
- Expand ML model exploration: Interaction with the ML community through programs such as the Frontier Development Laboratory (<https://frontierdevelopmentlab.org/>) reveals a wealth of potentially valuable ML approaches for the particle precipitation challenge. Three have emerged as particularly high potential from our investigation: (1) treating physical models as first class data sources and using their output as an input feature for an ML model (a “gray-box” approach [Camporeale et al., 2020]); (2) developing probabilistic ML models (e.g., [Camporeale, 2019]); and (3) encoding physical constraints into the loss function of the ML model as a means to allow physics to inform the process

## 6. Conclusion

We have produced a new nowcast model of total electron energy flux precipitation using 51 satellite years of DMSP particle precipitation data and a set of >150 organizing parameters from solar wind and geomagnetic activity indices and their time histories (of which we determine a smaller set that retains the important information to specify the energy flux). Particle precipitation data contain the complexity of the solar wind-magnetosphere-ionosphere system, which dictates the development of models with higher expressive capacity. Further, previous analysis of precipitation models have revealed that the most important aspect of particle precipitation models is the choice and representation of the organizing parameters (Newell et al., 2015). Thus, the physical situation dictates the use of ML algorithms that can respond to both needs. We have explored these algorithms and produced a new model, PrecipNet, that reduces errors over unseen validation data by 50% from the existing state-of-the-art, deemed here to be the model used in operations, OVATION Prime. We note that there are challenges to using the DMSP data for global models, such as small midlatitude gaps in magnetic local time coverage postmidnight and post noon. We have provided a process



for creating “analysis-ready data” for particle precipitation ML that will allow other datasets to be integrated into this work, helping to address observational issues.

We proposed and demonstrated a new model interrogation framework across three levels. In each, PrecipNet provides improvement. First, in more accurately representing the complexity inherent in the precipitation data indicated by their bimodal nature (Hardy et al., 2008) (Figure 5), then in recovering sharper dynamic changes in the flux time series data (Figure 6), and finally across comparisons with auroral imagery during a known substorm event (Figure 7).

We commented on numerous places in the design of ML models where physics can inform or be embedded, providing a guide for future work that dictates the use of ML in Heliophysics. Our results provide a model that can be used to study auroral phenomena, drive high-latitude auroral electrodynamics models, and be used as an input to global circulation models.

## Acknowledgments

The authors gratefully acknowledge the International Space Sciences Institute (ISSI) in Bern, Switzerland (<https://www.issibern.ch>) who funded the proposal “Novel approaches to multiscale geospace particle transfer: Improved understanding and prediction through uncertainty quantification and machine learning,” which originally brought this group together, provided resources for two in-person research weeks, and is a regular source of inspiration for cutting-edge space science research and collaboration. They also acknowledge two members of the first week of those meetings for their knowledge and direct contributions to this work; Irina Zhelavskaya and Yuri Shprits. Work at the Birkeland Center for Space Science is funded by the Research Council of Norway/CoE under contract 223252/F50 and by ESA contract 4000126731 in the framework of EO Science for Society. They acknowledge the University of Colorado Boulder Space Weather Technology, Education, and Research Center (SpWx TREC) for providing computational resources that in part aided our machine learning exploration. R. McGranaghan and J. Ziegler were in part supported under the Defense Advanced Research Projects Agency (DARPA) Space Environment Exploitation (SEE) grant to the Heliosphere to Earth’s Atmosphere Rendering via Excellent Artificial Intelligence Training (HEARTBEAT) team under Department of the Interior Award D19AC00009 to Georgia Institute of Technology with subaward to ASTRA. E. Camporeale is partially funded by NASA under grant 80NSSC20K1580. T. Bloch is funded by Science and Technology Facilities Council (STFC) training grant number ST/R505031/1. They gratefully acknowledge the OMNI initiative, from which we used data from the full set: “OMNI High resolution (1 min, 5 min) OMNI: Solar wind magnetic field and plasma data at Earth’s Bow Shock Nose (BSN)” and are freely and openly available at [https://omniweb.gsfc.nasa.gov/ow\\_min.html](https://omniweb.gsfc.nasa.gov/ow_min.html). They are grateful to those involved in preparing and providing the Defense Meteorological Satellite Program

## Data Availability Statement

The software and meta-information needed to reproduce analyses in this manuscript and to extend the research at <https://github.com/rmcgranaghan/precipNet>. That repository contains information on data preparation, software dependencies needed, the final precipNet model used for this manuscript, and reference to the published data set created and used by this research. OMNI High resolution (1 min, 5 min) OMNI: Solar wind magnetic field and plasma data at Earth’s Bow Shock Nose (BSN)” are freely and openly available at [https://omniweb.gsfc.nasa.gov/ow\\_min.html](https://omniweb.gsfc.nasa.gov/ow_min.html). The data were obtained from NASA’s CDAWeb system and are openly and freely available from <https://cdaweb.gsfc.nasa.gov/pub/data/dmsp/>. Monthly mean sunspot numbers data can be obtained from <http://www.sidc.be/silso/home>. SuperMAG includes the entire catalog of images obtained by the Polar VIS instrument. The images and the necessary software was generously made available to the SuperMAG team by the VIS instrumentation team

## References

- Akasofu, S.-I. (2017). Auroral substorms: Search for processes causing the expansion phase in terms of the electric current approach. *Space Science Reviews*, 212, 341–381. <https://doi.org/10.1007/s11214-017-0363-7>
- Barnes, G., Leka, K. D., Schrijver, C. J., Colak, T., Qahwaji, R., Ashamari, O. W., et al. (2016). A comparison of flare forecasting methods. I. Results from the “all-clear” workshop. *The Astrophysical Journal*, 829, 89. <https://doi.org/10.3847/0004-637x/829/2/89>
- Bengio, Y. (2012). Practical recommendations for gradient-based training of deep architectures. In G. Montavon, G. B. Orr, & K.-R. Müller (Eds.), *Neural networks: Tricks of the trade: Second edition* (pp. 437–478). Berlin, Heidelberg: Springer Berlin Heidelberg. <https://doi.org/10.1007/978-3-642-35289-8>
- Bentley, S. N., Watt, C. E. J., Owens, M. J., & Rae, I. J. (2018). ULF wave activity in the magnetosphere: Resolving solar wind interdependencies to identify driving mechanisms. *Journal of Geophysical Research: Space Physics*, 123, 2745–2771. <https://doi.org/10.1002/2017ja024740>
- Bergstra, J., & Bengio, Y. (2012). Random search for hyper-parameter optimization. *Journal of Machine Learning Research*, 13, 281–305.
- Bloomfield, D. S., Higgins, P. A., McAteer, R. T. J., & Gallagher, P. T. (2012). Toward reliable benchmarking of solar flare forecasting methods. *The Astrophysical Journal*, 747, L41. <https://doi.org/10.1088/2041-8205/747/2/L41>
- Bobra, M. G., & Couvidat, S. (2015). Solar flare prediction using SDO/HMI vector magnetic field data with a machine-learning algorithm. *The Astrophysical Journal*, 798, 135. <https://doi.org/10.1088/0004-637x/798/2/135>
- Borovsky, J. E. (2020a). A survey of geomagnetic and plasma time lags in the solar-wind-driven magnetosphere of earth. *Journal of Atmospheric and Solar-Terrestrial Physics*, 208, 105376. <https://doi.org/10.1016/j.jastp.2020.105376>
- Borovsky, J. E. (2020b). What magnetospheric and ionospheric researchers should know about the solar wind. *Journal of Atmospheric and Solar-Terrestrial Physics*, 204, 105271. <https://doi.org/10.1016/j.jastp.2020.105271>
- Borovsky, J. E., & Steinberg, J. T. (2006). The “calm before the storm” in CIR/magnetosphere interactions: Occurrence statistics, solar wind statistics, and magnetospheric preconditioning. *Journal of Geophysical Research*, 111. <https://doi.org/10.1029/2005ja011397>
- Borovsky, J. E., & Valdivia, J. A. (2018). The earth’s magnetosphere: A systems science overview and assessment. *Surveys in Geophysics*, 39, 817–859. <https://doi.org/10.1007/s10712-018-9487-x>
- Bortnik, J., Li, W., Thorne, R. M., & Angelopoulos, V. (2016). A unified approach to inner magnetospheric state prediction. *Journal of Geophysical Research: Space Physics*, 121, 2423–2430. <https://doi.org/10.1002/2015ja021733>
- Breiman, L. (2001). Random forests. *Machine Learning*, 45, 5–32. <https://doi.org/10.1023/a:1010933404324>
- Camporeale, E. (2019). The challenge of machine learning in space weather: Nowcasting and forecasting. *Space Weather*, 17, 1166–1207. <https://doi.org/10.1029/2018sw002061>
- Camporeale, E., Cash, M. D., Singer, H. J., Balch, C. C., Huang, Z., & Toth, G. (2020). A gray-box model for a probabilistic estimate of regional ground magnetic perturbations: Enhancing the NOAA operational geospace model with machine learning. *Journal of Geophysical Research: Space Physics*, 125, e2019JA027684. <https://doi.org/10.1029/2019ja027684>
- Cannon, P., Angling, M., Barclay, L., Curry, C., Dyer, C., Edwards, R., et al. (2013). *Extreme space weather: Impacts on engineered systems and infrastructure* (p. 68). Royal Academy of Engineering. <https://books.google.com/books?id=aLoumWEACAAJ>
- Deng, Y., Heelis, R., Lyons, L. R., Nishimura, Y., & Gabrielse, C. (2019). Impact of flow bursts in the auroral zone on the ionosphere and thermosphere. *Journal of Geophysical Research: Space Physics*, 124. <https://doi.org/10.1029/2019JA026755>

(DMSP) data over the several decade lifetime of these spacecraft. They thank the SILSO service at the Royal Observatory of Belgium in Brussels for providing the monthly mean sunspot numbers. Those data can be obtained from <http://www.sidc.be/silso/home>. For the ground magnetometer data the authors gratefully acknowledge: INTERMAGNET, Alan Thomson; CARISMA, PI Ian Mann; CANMOS, Geomagnetism Unit of the Geological Survey of Canada; The S-RAMP Database, PI K. Yumoto and Dr. K. Shiokawa; The SPIDR database; AARI, PI Oleg Troshichev; The MACCS program, PI M. Engebretson; GIMA; MEASURE, UCLA IGPP and Florida Institute of Technology; SAMBA, PI Efthymia Zesta; 210 Chain, PI K. Yumoto; SAMNET, PI Farideh Honary; IMAGE, PI Liisa Juusola; Finnish Meteorological Institute, PI Liisa Juusola; Sodankylä Geophysical Observatory, PI Tero Raita; UiT the Arctic University of Norway, Tromsø Geophysical Observatory, PI Magnar G. Johnsen; GFZ German Research Center For Geosciences, PI Jürgen Matzka; Institute of Geophysics, Polish Academy of Sciences, PI Anne Neska and Jan Reda; Polar Geophysical Institute, PI Alexander Yahnin, and Yaroslav Sakharov; Geological Survey of Sweden, PI Gerhard Schwarz; Swedish Institute of Space Physics, PI Masatoshi Yamauchi; AUTUMN, PI Martin Connors; DTU Space, Thom Edwards and PI Anna Willer; South Pole and McMurdo Magnetometer, PI's Louis J. Lanzarotti and Alan T. Weatherwax; ICESTAR; RAPIDMAG; British Antarctic Survey; MacMac, PI Dr. Peter Chi; BGS, PI Dr. Susan Macmillan; Pushkov Institute of Terrestrial Magnetism, Ionosphere and Radio Wave Propagation (IZMIRAN); MFGI, PI B. Heilig; Institute of Geophysics, Polish Academy of Sciences, PI Anne Neska and Jan Reda; University of L'Aquila, PI M. Vellante; BCMT, V. Lesur and A. Chambodut; Data obtained in cooperation with Geoscience Australia, PI Andrew Lewis; AALPIP, co-PIs Bob Clauer and Michael Hartinger; SuperMAG, PI Jesper W. Gjerloev; Data obtained in cooperation with the Australian Bureau of Meteorology, PI Richard Marshall. For the Polar VIS Earth Camera images, the authors gratefully acknowledge the Polar VIS Earth Camera team, PI Prof. Louis A. Frank. They further acknowledge and thank from Robin Barnes and the SuperMAG team for providing the VIS image data. SuperMAG includes the entire catalog of images obtained by the Polar VIS instrument. Open Access publication of this article was funded by the University of Colorado Boulder Libraries Open Access Fund.

- Emery, B. A., Evans, D. S., Greer, M. S., Holeman, E., Kadinsky-Cade, K., Rich, F. J., & Xu, W. (2006). The low energy auroral electron and ion hemispheric power after NOAA and DMSP intersatellite adjustments. *NCAR scientific and technical report, TN-470 STR*. National Center for Atmospheric Research.
- Frank, L. A., Sigwarth, J. B., Craven, J. D., Cravens, J. P., Dolan, J. S., Dvorsky, M. R., et al. (1995). The visible imaging system (VIS) for the polar spacecraft. *Space Science Reviews*, 71. <https://doi.org/10.1007/bf00751334>
- Fuller-Rowell, T. J., Akmaev, R. A., Wu, F., Anghel, A., Maruyama, N., Anderson, D. N., et al. (2008). Impact of terrestrial weather on the upper atmosphere. *Geophysical Research Letters*, 35. <https://doi.org/10.1029/2007gl032911>
- Fuller-Rowell, T. J., & Evans, D. S. (1987). Height-integrated Pedersen and hall conductivity patterns inferred from the tiros-NOAA satellite data. *Journal of Geophysical Research*, 92, 7606–7618. <https://doi.org/10.1029/ja092ia07p07606>
- Gjerloev, J. W., Hoffman, R. A., Sigwarth, J. B., & Frank, L. A. (2007). Statistical description of the bulge-type auroral substorm in the far ultraviolet. *Journal of Geophysical Research*, 112. <https://doi.org/10.1029/2006ja012189>
- Gjerloev, J. W., Waters, C. L., & Barnes, R. J. (2018). Deriving global convection maps from SuperDARN measurements. *Journal of Geophysical Research: Space Physics*, 123, 2902–2915. <https://doi.org/10.1002/2017ja024543>
- Hardy, D. A., Gussenhoven, M. S., & Holeman, E. (1985). A statistical model of auroral electron precipitation. *Journal of Geophysical Research*, 90, 4229–4248. <https://doi.org/10.1029/ja090ia05p04229>
- Hardy, D. A., Gussenhoven, M. S., Raistrick, R., & McNeil, W. J. (1987). Statistical and functional representations of the pattern of auroral energy flux, number flux, and conductivity. *Journal of Geophysical Research*, 92, 12275–12294. <https://doi.org/10.1029/JA092iA11p12275>
- Hardy, D. A., Holeman, E. G., Burke, W. J., Gentile, L. C., & Bounar, K. H. (2008). Probability distributions of electron precipitation at high magnetic latitudes. *Journal of Geophysical Research*, 113. <https://doi.org/10.1029/2007ja012746>
- Hastie, T., Tibshirani, R., & Friedman, J. (2001). *The elements of statistical learning*. New York, NY, USA: Springer New York Inc.
- Janecek, A. G. K., Gansterer, W. N., Demel, M. A., & Ecker, G. F. (2008). On the relationship between feature selection and classification accuracy. *Proceedings of the 2008 international conference on new challenges for feature selection in data mining and knowledge discovery* (4, pp. 90–105). JMLR.org.
- Jolliffe, I. T., & Cadima, J. (2016). Principal component analysis: a review and recent developments. *Philosophical Transactions of the Royal Society A*, 374, 20150202. <https://doi.org/10.1098/rsta.2015.0202>
- Karpatne, A., Atluri, G., Faghmous, J. H., Steinbach, M., Banerjee, A., Ganguly, A. R., et al. (2016). Theory-guided data science: A new paradigm for scientific discovery. *IEEE Transactions on Knowledge and Data Engineering*, 29, 2318–2331. <https://doi.org/10.1109/TKDE.2017.2720168>
- Khalid, S., Khalil, T., & Nasreen, S. (2014). A survey of feature selection and feature extraction techniques in machine learning. In *2014 science and information conference* (pp. 372–378). <https://doi.org/10.1109/SAI.2014.6918213>
- Lamb, K., Malhotra, G., Vlontzos, A., Wagstaff, E., Baydin, A. G., Bhiwandiwala, A., et al. (2019). *Correlation of auroral dynamics and GNSS scintillation with an autoencoder*. <https://doi.org/10.7765/9781526125866.00002>
- Laundal, K. M., Nossens, I., Milan, S. E., Haaland, S. E., Coxon, J., Pedatella, N. M., et al. (2017). North-south asymmetries in Earth's magnetic field. *Space Science Reviews*, 206, 225–257. <https://doi.org/10.1007/s11214-016-0273-0>
- Laundal, K. M., Reistad, J. P., Finlay, C. C., Østgaard, N., Tenfjord, P., Snekvik, K., & Ohma, A. (2018). Interplanetary magnetic field Bx component influence on horizontal and field-aligned currents in the ionosphere. *Journal of Geophysical Research: Space Physics*, 123, 3360–3379. <https://doi.org/10.1002/2017ja024864>
- Leka, K. D., Park, S.-H., Kusano, K., Andries, J., Barnes, G., Bingham, S., et al. (2019). A comparison of flare forecasting methods. II. benchmarks, metrics, and performance results for operational solar flare forecasting systems. *The Astrophysical Journal Supplement Series*, 243, 36. <https://doi.org/10.3847/1538-4365/ab2e12>
- Lewis, W. S., Burch, J. L., Goldstein, J., Horton, W., Perez, J. C., Frey, H. U., & Anderson, P. C. (2005). Duskside auroral undulations observed by image and their possible association with large-scale structures on the inner edge of the electron plasma sheet. *Geophysical Research Letters*, 32. <https://doi.org/10.1029/2005gl024390>
- Liemohn, M. W., McCollough, J. P., Jordanova, V. K., Ngwira, C. M., Morley, S. K., Cid, C., et al. (2018). Model evaluation guidelines for geomagnetic index predictions. *Space Weather*, 16, 2079–2102. <https://doi.org/10.1029/2018sw002067>
- Liou, K., Newell, P. T., Meng, C.-I., Brittnacher, M., & Parks, G. (1998). Characteristics of the solar wind controlled auroral emissions. *Journal of Geophysical Research*, 103, 17543–17557. <https://doi.org/10.1029/98ja01388>
- Liou, K., Sotiirelis, T., & Mitchell, E. (2018). North-south asymmetry in the geographic location of auroral substorms correlated with ionospheric effects. *Science Reports*, 8. <https://doi.org/10.1038/s41598-018-35091-2>
- Lu, G., Richmond, A. D., Lühr, H., & Paxton, L. (2016). High-latitude energy input and its impact on the thermosphere. *Journal of Geophysical Research: Space Physics*, 121, 7108–7124. <https://doi.org/10.1002/2015ja022294>
- Machol, J. L., Green, J. C., Redmon, R. J., Viereck, R. A., & Newell, P. T. (2012). Evaluation of OVATION Prime as a forecast model for visible aurorae. *Space Weather*, 10. <https://doi.org/10.1029/2011sw000746>
- McGranaghan, R. M. (2016). *Determining global ionospheric conductivity in the satellite and data assimilation age and assessing its influence on the magnetosphere-ionosphere-thermosphere system*. Boulder, CO: University of Colorado.
- McGranaghan, R. M. (2019). *Eight lessons I learned leading a scientific "design sprint"*. Eos. <https://doi.org/10.1029/2019eo136427>
- McGranaghan, R. M., Bhatt, A., Matsuo, T., Mannucci, A. J., Semeter, J. L., & Datta-Barua, S. (2017). Ushering in a new frontier in geospace through data science. *Journal of Geophysical Research: Space Physics*, 122, 12586–12590. <https://doi.org/10.1002/2017ja024835>
- McGranaghan, R. M., Bloch, T., Ziegler, J., Hatch, S., Camporeale, E., Owens, M., & Skone, S. (2020, Nov). *DMSP particle precipitation AI-ready data*. Zenodo. <https://doi.org/10.5281/zenodo.4281122>
- McGranaghan, R. M., Knipp, D. J., Matsuo, T., Godinez, H., Redmon, R. J., Solomon, S. C., & Morley, S. K. (2015). Modes of high-latitude auroral conductance variability derived from DMSP energetic electron precipitation observations: Empirical orthogonal function analysis. *Journal of Geophysical Research: Space Physics*, 120, 11013–11031. <https://doi.org/10.1002/2015ja021828>
- McGranaghan, R. M., Mannucci, A. J., Wilson, B., Mattmann, C. A., & Chadwick, R. (2018). New capabilities for prediction of high-latitude ionospheric scintillation: A novel approach with machine learning. *Space Weather*, 16, 1817–1846. <https://doi.org/10.1029/2018sw002018>
- Millward, G. H., Moffett, R. J., Quegan, S., & Fuller-Rowell, T. J. (1996). A coupled thermosphere-ionosphere-plasmasphere model. In R. W. Schunk (Ed.), *Handbook of ionospheric models* (pp. 239–279). Logan, UT: Utah State University.
- Mitchell, E. J., Newell, P. T., Gjerloev, J. W., & Liou, K. (2013). OVATION-SM: A model of auroral precipitation based on SuperMAG generalized auroral electrojet and substorm onset times. *Journal of Geophysical Research: Space Physics*, 118, 3747–3759. <https://doi.org/10.1002/jgra.50343>
- Mitchell, T. (1997). *Machine learning*. McGraw-Hill. Retrieved from <https://books.google.com/books?id=EOYBngEACAAJ>

- Morley, S. K. (2020). Challenges and opportunities in magnetospheric space weather prediction. *Space Weather*, 18, e2018SW002108. <https://doi.org/10.1029/2018SW002108>
- Morley, S. K., Welling, D. T., & Woodroffe, J. R. (2018). Perturbed input ensemble modeling with the space weather modeling framework. *Space Weather*, 16, 1330–1347. <https://doi.org/10.1029/2018sw002000>
- Murray, S. A. (2018). The importance of ensemble techniques for operational space weather forecasting. *Space Weather*, 16, 777–783. <https://doi.org/10.1029/2018sw001861>
- Nash, J. E., & Sutcliffe, J. V. (1970). River flow forecasting through conceptual models part I: A discussion of principles. *Journal of Hydrology*, 10, 282–290. [https://doi.org/10.1016/0022-1694\(70\)90255-6](https://doi.org/10.1016/0022-1694(70)90255-6)
- Newell, P. T., & Gjerloev, J. W. (2011a). Evaluation of SuperMAG auroral electrojet indices as indicators of substorms and auroral power. *Journal of Geophysical Research*, 116. <https://doi.org/10.1029/2011JA016779>
- Newell, P. T., & Gjerloev, J. W. (2011b). Substorm and magnetosphere characteristic scales inferred from the SuperMAG auroral electrojet indices. *Journal of Geophysical Research*, 116. <https://doi.org/10.1029/2011JA016936>
- Newell, P. T., Lee, A. R., Liou, K., Ohtani, S.-I., Sotirelis, T., & Wing, S. (2010a). Substorm cycle dependence of various types of aurora. *Journal of Geophysical Research*, 115. <https://doi.org/10.1029/2010ja015331>
- Newell, P. T., Liou, K., Sotirelis, T., & Meng, C.-I. (2001). Auroral precipitation power during substorms: A Polar UV Imager-based superposed epoch analysis. *Journal of Geophysical Research*, 106, 28885–28896. <https://doi.org/10.1029/2000ja000428>
- Newell, P. T., Liou, K., Zhang, Y., Sotirelis, T., Paxton, L. J., & Mitchell, E. J. (2014). Ovation prime-2013: Extension of auroral precipitation model to higher disturbance levels. *Space Weather*, 12, 368–379. <https://doi.org/10.1002/2014sw010156>
- Newell, P. T., Liou, K., Zhang, Y., Sotirelis, T. S., Mitchell, E. J., & Mitchell, E. J. (2015). Auroral precipitation models and space weather. In *Auroral dynamics and space weather* (pp. 275–290). American Geophysical Union (AGU). <https://doi.org/10.1002/9781118978719.ch18>
- Newell, P. T., Ruohoniemi, J. M., & Meng, C.-I. (2004). Maps of precipitation by source region, binned by IMF, with inertial convection streamlines. *Journal of Geophysical Research*, 109. <https://doi.org/10.1029/2004ja010499>
- Newell, P. T., Sotirelis, T., Liou, K., Lee, A. R., Wing, S., Green, J., & Redmon, R. (2010b). Predictive ability of four auroral precipitation models as evaluated using polar UVI global images. *Space Weather*, 8. <https://doi.org/10.1029/2010sw000604>
- Newell, P. T., Sotirelis, T., Liou, K., Meng, C.-I., & Rich, F. J. (2007). A nearly universal solar wind-magnetosphere coupling function inferred from 10 magnetospheric state variables. *Journal of Geophysical Research*, 112. <https://doi.org/10.1029/2006ja012015>
- Newell, P. T., Sotirelis, T., Ruohoniemi, J. M., Carbarry, J. F., Liou, K., Skura, J. P., et al. (2002). OVATION: Oval variation, assessment, tracking, intensity, and online nowcasting. *Annales Geophysicae*, 20(7), 1039–1047. <https://doi.org/10.5194/angeo-20-1039-2002>
- Newell, P. T., Sotirelis, T., & Wing, S. (2009). Diffuse, monoenergetic, and broadband aurora: The global precipitation budget. *Journal of Geophysical Research*, 114. <https://doi.org/10.1029/2009ja014326>
- Newell, P. T., Sotirelis, T., & Wing, S. (2010c). Seasonal variations in diffuse, monoenergetic, and broadband aurora. *Journal of Geophysical Research*, 115. <https://doi.org/10.1029/2009ja014805>
- Nishimura, Y., Yang, J., Pritchett, P. L., Coroniti, F. V., Donovan, E. F., Lyons, L. R., et al. (2016). Statistical properties of substorm auroral onset beads/rays. *Journal of Geophysical Research: Space Physics*, 121, 8661–8676. <https://doi.org/10.1002/2016ja022801>
- Olivas, E. S., Guerrero, J. D. M., Sober, M. M., Bedito, J. R. M., & Lopez, A. J. S. (2009). *Handbook of research on machine learning applications and trends: Algorithms, methods and techniques-2 volumes* (p. 852). Hershey, PA: Information Science Reference - Imprint of: IGI Publishing.
- Pankratius, V., Li, J., Gowanlock, M., Blair, D. M., Rude, C., Herring, T., et al. (2016). Computer-aided discovery: Toward scientific insight generation with machine support. *IEEE Intelligent Systems*, 31, 3–10. <https://doi.org/10.1109/MIS.2016.60>
- Ramachandran, R. W., Lynnes, C. M., Bingham, A., & Quam, B. (2018). *Workshop on enabling analytics in the cloud for earth science data; February 21, 2018–February 23, 2018*. Annapolis, MD.
- Redmon, R. J., Denig, W. F., Kilcommons, L. M., & Knipp, D. J. (2017). New DMSP database of precipitating auroral electrons and ions. *Journal of Geophysical Research: Space Physics*, 122, 9056–9067. <https://doi.org/10.1002/2016ja023339>
- Richmond, A. D., Lu, G., Emery, B. A., & Knipp, D. J. (1998). The AMIE procedure: Prospects for space weather specification and prediction. *Advances in Space Research*, 22, 103–112. [https://doi.org/10.1016/s0273-1177\(97\)01108-3](https://doi.org/10.1016/s0273-1177(97)01108-3)
- Ridley, A. J., Deng, Y., & Tóth, G. (2006). The global ionosphere-thermosphere model. *Journal of Atmospheric and Solar-Terrestrial Physics*, 68, 839–864. <https://doi.org/10.1016/j.jastp.2006.01.008>
- Ridley, A. J., Gombosi, T. I., & DeZeeuw, D. L. (2004). Ionospheric control of the magnetosphere: Conductance. *Annales Geophysicae*, 22, 567–584. <https://doi.org/10.5194/angeo-22-567-2004>
- Robinson, R., Zhang, Y., Garcia-Sage, K., Fang, X., Verkhoglyadova, O. P., Ngwira, C., et al. (2019). Space weather modeling capabilities assessment: Auroral precipitation and high-latitude ionospheric electrodynamics. *Space Weather*, 17, 212–215. <https://doi.org/10.1029/2018sw002127>
- Roble, R. G., Ridley, E. C., Richmond, A. D., & Dickinson, R. E. (1988). A coupled thermosphere/ionosphere general circulation model. *Geophysical Research Letters*, 15, 1325–1328. <https://doi.org/10.1029/gl015i012p01325>
- Rumelhart, D., Hinton, G. E., & Williams, R. J. (1986). *Learning internal representations by error propagation* (pp. 318–362). <https://doi.org/10.7551/mitpress/5236.001.0001>
- Smith, L. N. (2018). *A disciplined approach to neural network hyper-parameters: Part 1-learning rate, batch size, momentum, and weight decay*. ArXiv.
- Srivastava, N., Hinton, G., Krizhevsky, A., Sutskever, I., & Salakhutdinov, R. (2014). Dropout: A simple way to prevent neural networks from overfitting. *Journal of Machine Learning Research*, 15, 1929–1958.
- Welling, D. T., Anderson, B. J., Crowley, G., Pulkkinen, A. A., & Rastätter, L. (2017). Exploring predictive performance: A reanalysis of the geospace model transition challenge. *Space Weather*, 15, 192–203. <https://doi.org/10.1002/2016SW001505>
- Wickham, H. (2014). Tidy data. *The Journal of Statistical Software*, 14. <https://doi.org/10.18637/jss.v059.i10>
- Zhang, Y., & Paxton, L. (2008). An empirical Kp-dependent global auroral model based on TIMED/GUVI FUV data. *Journal of Atmospheric and Solar-Terrestrial Physics*, 70, 1231–1242. <https://doi.org/10.1016/j.jastp.2008.03.008>