

## FUTUREFIT YOUR CATALOG

**Kathleen Ann Heil**

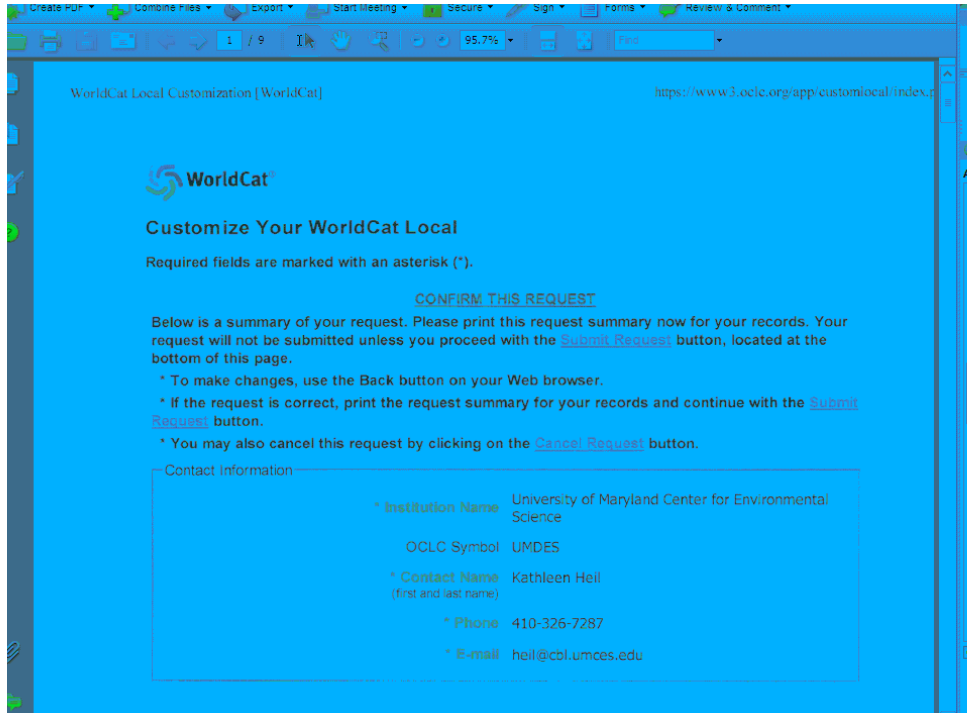
University of Maryland Center for Environmental Science  
Chesapeake Biological Laboratory  
Solomons, MD 20688

**Abstract:**

**Keywords:**

The University of Maryland Center for Environmental Science is the only non-degree granting Campus in the University System of Maryland. Most of the students are enrolled in the Marine and Environmental Science program at University of Maryland College Park. All of our students are M.S. and PhD. Candidates.

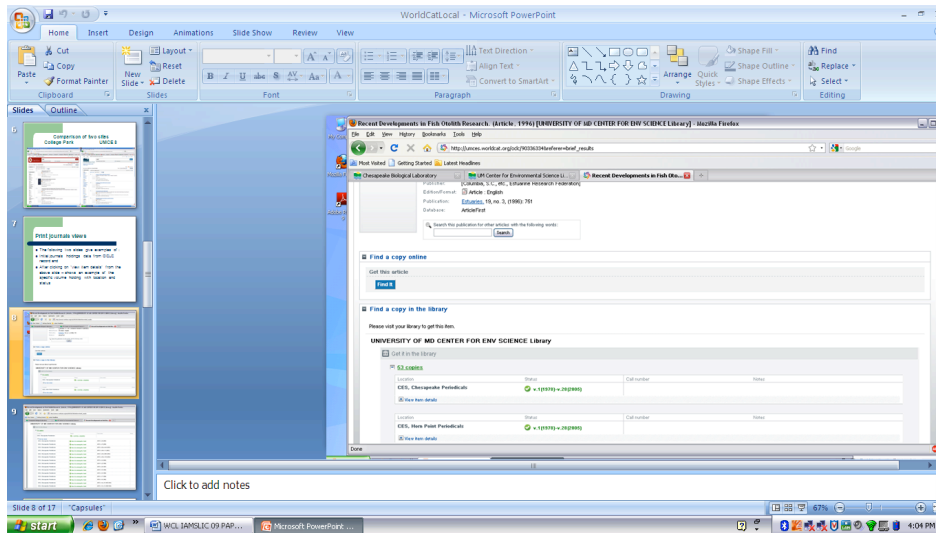
The University System Libraries started looking into next generation interfaces/ discovery tools nearly two years ago. After looking at a few products we decided to start a rolling implementation of World Cat Local. The campus libraries that have internal information technology divisions or staffing were the first to implement. This was a big bonus for the smaller libraries, because the larger libraries provided excellent documentation on their choices and why they implemented what they did and did the initial testing for implementation. We were also fortunate that the Information Technology Division that supports our Library Information Management System provided OCLC with basic set-up information for each campus. OCLC set-up our provisional site and notified us of our specific site address and the information we needed to make changes in our implementation. The “early implementers” especially UMCP distributed to the rest of us a 10 page cheat sheet document on what choices they made and why them chose what they did.



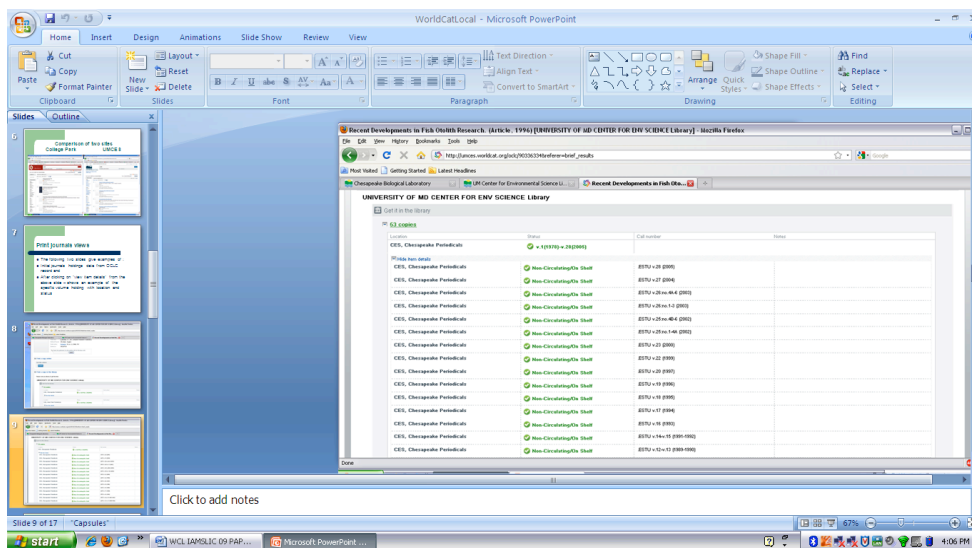
This is a copy of our initial screen.

World Cat Local (WCL) allows you to choose 3 catalog level options you want available to your patrons and in what order. Some Campuses have chosen for their Campus to initially show in the search box with the drop down options to be all USMAI (University System of Maryland and Affiliated Institutions) and World Cat. At this point WCL searches the catalog of your choice as well as OCLC First Search hosted databases such as: PapersFirst, Medline, Dissertation Abstracts Online, etc. then linking using your open link resolver so that articles can be pulled up by the patron without exiting the system. WCL will soon be adding additional searching in EBSCO databases, and ProQuest databases.





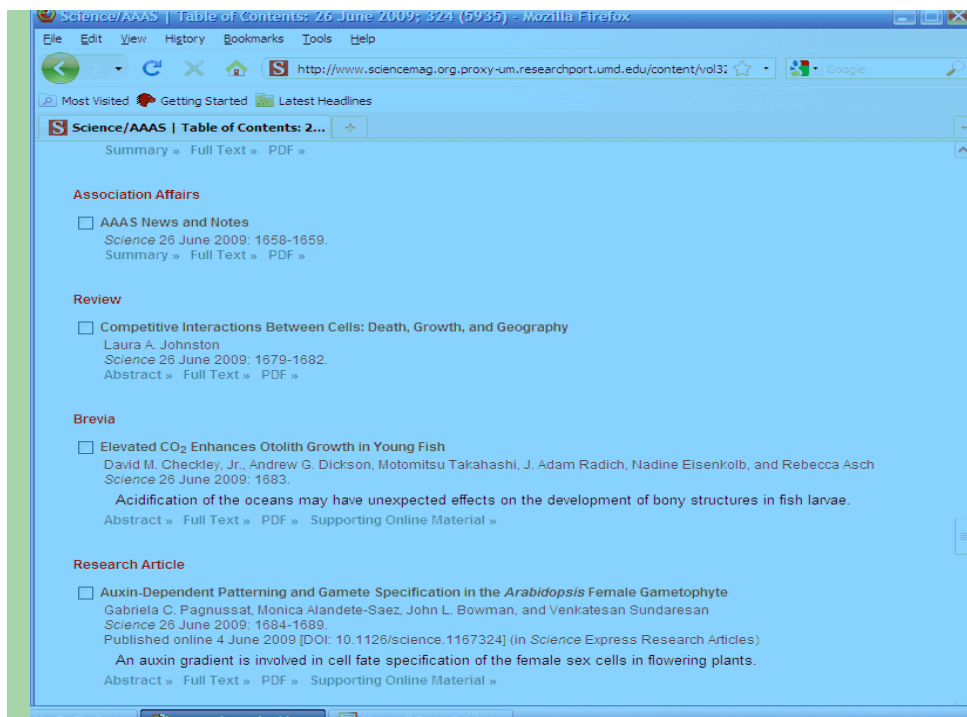
WCL does show specific holdings for books and journals. This screen shot shows holdings from 856 field and then specific item holdings.



Click on "View item Detail" for detailed holdings down to the items level.

The screenshot shows a library website interface. At the top, there is a navigation bar with 'Home' and 'Search' links, and the text 'UNIVERSITY OF MD CENTER FOR ENV SCIENCE Library'. A search bar contains the text 'Libraries Worldwide' and a 'Search' button. Below the search bar, the article title 'Elevated CO2 enhances otolith growth in young fish' is displayed. The author information is listed as 'Checkley, Jr., D.M.; Dickson, A.G.; Radich, J.A.; Asch, R.; Takahashi, M.; All authors'. There are links for 'Cite/Export', 'Print', 'Email', 'Add to list', 'Bookmark & Share', and 'Permalink'. A 'More like this' section with a 'Similar Items' link is also present. Below the article details, there is a section titled 'Get this item' with a 'Borrow or obtain a copy' button. A message states: 'We were unable to get availability information for this item. Please check at the circulation desk for assistance.' Underneath, there is a 'UNIVERSITY OF MD CENTER FOR ENV SCIENCE Library' section with a 'Get it online' button and a 'Find It' button. A 'WorldCat' section has a 'Find it in libraries globally' button and a 'Request Item through Interlibrary Loan' button. The bottom of the screen shows a Windows taskbar with a 'start' button and several open windows.

Clicking on the author information in the screen above provides link out to AAAS Science, where it is then necessary to scroll down to the article to retrieve the desired article.



These are screen shots that demonstrate the linking out through link resolver to article that came up in the results from a search.

1683.pdf (application/pdf Object) - Mozilla Firefox

File Edit View History Bookmarks Tools Help

http://www.sciencemag.org.proxy-um.researchport.umd.edu/cgi/reprint/32

Most Visited Getting Started Latest Headlines

1683.pdf (application/pdf Object)

Find

BREVIA

## Elevated CO<sub>2</sub> Enhances Otolith Growth in Young Fish

David M. Checkley Jr.,\* Andrew G. Dickson, Motomitsu Takahashi,† J. Adam Radich, Nadine Eisenkolb,‡ Rebecca Asst

A large fraction (0.3 to 0.5) of the carbon dioxide (CO<sub>2</sub>) added to the atmosphere by human burning of fossil fuels enters the ocean (1). This causes ocean acidification by increasing the concentrations of oceanic CO<sub>2</sub>, bicarbonate (HCO<sub>3</sub><sup>-</sup>) and hydrogen (H<sup>+</sup>) ions and decreasing the concentration of carbonate (CO<sub>3</sub><sup>2-</sup>) ion and hence the saturation state of calcium carbonate (Ω) (1). Addition of CO<sub>2</sub> to the atmosphere and ocean may thus influence the rates of formation and dissolution of aragonite and calcite, biominerals that are critical to diverse marine taxa. Although some recent studies have shown that elevated CO<sub>2</sub> enhances structural calcification in coccolithophores and invertebrates, most studies have shown a slowing of structural calcification (2). Otoliths are bony structures used by fish to sense orientation and acceleration and consist of aragonite-protein bilayers, which document fish age and growth. We hypothesized that otoliths in eggs and larvae reared

and 4 used 993 μatm of CO<sub>2</sub>, an atmospheric concentration ~2.5 times the present concentration that may occur by 2100 (4). Contrary to expectations, the otoliths of fish grown in seawater with high CO<sub>2</sub> and hence lower pH and Ω<sub>aragonite</sub> were significantly larger than those of fish grown under simulations of present-day conditions (Fig. 1D and table S1). For 7- to 8-day-old fish grown under 993 and 2558 μatm of CO<sub>2</sub>, the areas of the otoliths were 7 to 9% and 15 to 17% larger, respectively, than those of control fish grown under 380 μatm of CO<sub>2</sub>. Assuming otolith density is constant and that volume is proportional to area<sup>3/2</sup> (3), we estimate otolith masses were 10 to 14% and 24 to 26% greater, respectively, for fish under 993 and 2558 μatm of

CO<sub>2</sub>. The dry mass of fish did not vary with CO<sub>2</sub> (3), and thus fish of the same size had larger otoliths when grown under elevated CO<sub>2</sub>.

Our results are consistent with young fish being able to control the concentration of ions (H<sup>+</sup> and Ca<sup>2+</sup>), but not the neutral molecule CO<sub>2</sub>, in the endolymph surrounding the otolith. Gases in tissues of fish eggs and larvae equilibrate rapidly with seawater by cutaneous exchange (5) but may also be affected by acid-base regulation (6). In the endolymph, with constant pH, elevated CO<sub>2</sub> increases CO<sub>3</sub><sup>2-</sup> concentration and thus the Ω<sub>aragonite</sub>, accelerating formation of otolith aragonite. This is a fundamentally different effect of elevated CO<sub>2</sub> on marine biomineralization than those in previous reports on acidification (1, 2).

We do not know whether our results apply to other taxa with aragonite sensory organs, such as squid and mysids (otoliths) or other fish species. Nor do we know whether larger otoliths have a deleterious effect, although we do know that asymmetry between otoliths can be harmful (7).

Our results indicate the need to understand the diverse effects of elevated CO<sub>2</sub> on biomineralization over taxa and developmental stages. The specific effects of elevated CO<sub>2</sub> not simply acidification, should be considered. Calcification and dissolution of calcium carbonate occur sequentially and often at different locations and under different conditions. Whatever the organisms, to predict the effects of elevated CO<sub>2</sub>, we need to know the mechanisms of production and dissolution and their relationships to changing seawater chemistry.

References and Notes

1. J. C. Orr et al., *Nature* 437, 681 (2005).
2. S. C. Doney et al., *Annu. Rev. Mar. Sci.* 1, 169 (2009).

om:www.sciencemag.org on August 24, 2009

OCLC did work with us to get our rather unique system-wide hold/recall system to work within WCL, which was a major requirement for our implementation. After having this service available for nearly twenty years, we all strongly felt that whatever federated searching tool we implemented, this feature had to be functional.

So far about half of the USMAI campuses have implemented WCL, either as an option or as the only access point. Overall reaction has been positive.

I have loaded a copy of the full PowerPoint presentation on the Aquatic Commons - <http://aquacomm.fcla.edu/2838>.