

Report



Equality and Diversity data report, 2008/09 to 2010/11

Adult learner and all age Apprenticeship participation and success rates by ethnicity, gender, learning difficulties and/or disabilities and age

Date of issue 2 May 2012

Publication intent NOT PROTECTIVELY MARKED

Executive Summary

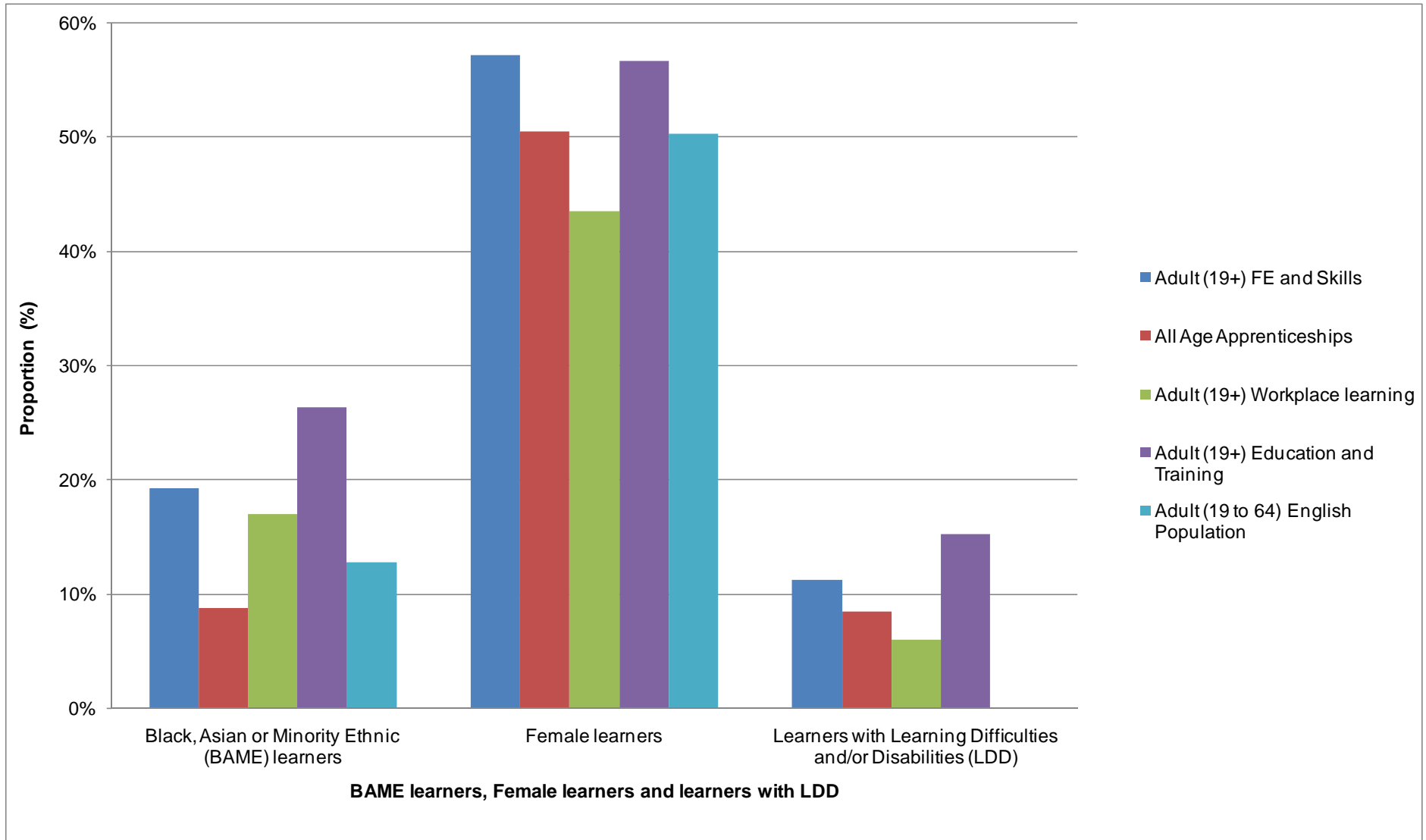
- 1 This report analyses participation and success rates of apprentices and adult learners in 2008/09, 2009/10 and 2010/11, by ethnicity, gender, learning difficulties and/or disabilities and age, using data from the Individualised Learner Record.
- 2 The summary chart below shows participation in 2010/11 by Black, Asian or Minority Ethnic (BAME) learners, female learners, and learners with learning difficulties and/or disabilities, broken down by funding stream, and compared against the English population. Comparable population figures for learning difficulties and/or disabilities are not available, so are not shown in this chart.

Skills Funding Agency

Cheylesmore House Quinton Road Coventry CV1 2WT
T 0845 377 5000 www.skillsfundingagency.bis.gov.uk

An agency of the Department for Business, Innovation & Skills

Summary Chart: Equality and Diversity Proportions for Learners, 2010/11 and the English Population¹



¹ Office for National Statistics Quarter 4 2010 Labour Force Survey, ages 19 to 64, England.

Ethnicity

3 In 2010/11:

- 19.2 per cent of all adult learners were from a Black, Asian or Minority Ethnic (BAME) background. This was higher than the estimated proportion of BAME people in the general English population (12.7 per cent) and higher than the proportion of BAME learners in 2008/09 (17.6 per cent).
- 8.7 per cent of apprentices were from a BAME background. This is lower than the proportion of BAME people in the general English population, but it is higher than the proportion of BAME apprentices in 2008/09 (6.7 per cent).
- Apprenticeship success rates were higher for all ethnic groups than in either of the previous two years. Success rates ranged from 71.1 per cent for Black or Black British learners to 76.6 per cent for White learners, a gap of 5.5 percentage points.

Gender

4 In 2010/11:

- 57.1 per cent of all adult learners were female. This is higher than the proportion in the general English population (50.2 per cent), but lower than the proportions in 2008/09 (58.1 per cent) and 2009/10 (57.4 per cent).
- 50.4 per cent of apprentices were female. This is slightly higher than the proportion in the general English population, and higher than the proportion of female apprentices in 2008/09 (45.8 per cent).

5 In 2010/11, in the five largest Apprenticeship Sector Subject Areas by number of starts:

- 65.3 per cent of starts in Business, Administration and Law are by females
- 61.8 per cent of starts in Retail and Commercial Enterprise are by females
- 81.7 per cent of starts in Health, Public Services and Care are by females
- 6.1 per cent of starts in Engineering and Manufacturing Technologies apprentices are by females
- 1.6 per cent of starts in Construction, Planning and the Built Environment apprentices are by females.

6 Success rates rose for both female and male apprentices between 2008/09 and 2010/11. In 2010/11, Females had a success rate of 77.2 per cent, 1.5 percentage points higher than males.

Learning Difficulties and/or Disabilities

7 Among all adult learners in 2010/11:

- 11.2 per cent declared learning difficulties and/or disabilities (LDD). This is higher than the proportion in 2008/09 (10.3 per cent).
- 0.9 per cent declared a mental health difficulty
- 0.8 per cent declared a disability affecting mobility
- 0.7 per cent declared a hearing impairment
- 0.7 per cent declared multiple disabilities
- 2.4 per cent declared dyslexia
- 1.5 per cent declared a moderate learning difficulty.

8 In Apprenticeships in 2010/11:

- 8.4 per cent of apprentices declared learning difficulties and/or disabilities. This is lower than the proportion in 2008/09 (10.1 per cent).
- 7.1 per cent of BAME apprentices declared an LDD, compared to 8.6 per cent of White apprentices.
- Apprentices with LDD had a success rate of 72.6 per cent, 4.3 percentage points lower than that for apprentices who did not have an LDD.
- Success rates by disability impairment type ranged from 67.8 per cent for apprentices with emotional/behavioural difficulties, to 77.0 per cent for those with visual impairments compared to 76.5 per cent for those who did not declare a disability impairment.
- Success rates by learning difficulty ranged from 59.6 per cent for apprentices with multiple learning difficulties, to 73.5 per cent for learners with dyscalculia, compared to 76.8 per cent for learners without a learning difficulty.

9 In Education and Training provision in 2010/11,

- Learners who declared an LDD had a success rate of 81.8 per cent, 0.2 percentage points higher than learners who did not declare an LDD.
- 10.4 per cent of BAME learners declared an LDD, compared to 17.2 per cent of White learners

Age

- 10 In Apprenticeships between 2008/09 and 2010/11, learners over 25 consistently had higher success rates than learners aged 19-24 and learners under 19.
- 11 In Education and Training provision between 2008/09 and 2010/11, success rates were consistently highest for learners aged 60+, and lowest for learners aged 19-24.

Contents

Executive Summary.....	1
Contents	6
Introduction.....	7
Notes on Data.....	8
Participation.....	9
Participation by Ethnicity	9
Participation by Gender.....	13
Participation by Learning Difficulties and/or Disabilities	16
Participation by Age	21
Participation by Ethnicity and Gender	25
Participation by Ethnicity and Learning Difficulties and/or Disabilities.....	28
Participation by Gender and Learning Difficulties and/or Disabilities	31
Apprenticeship starts by Sector Subject Area and Gender.....	34
Success Rates.....	36
Success Rates by Ethnicity.....	36
Success Rates by Gender	39
Success Rates by Learning Difficulties and/or Disabilities	40
Success Rates by Age.....	44
Success Rates by Ethnicity and Gender	46
Success Rates by Ethnicity and Learning Difficulties and/or Disabilities	48
Success Rates by Gender and Learning Difficulties and/or Disabilities	51
Support.....	53

Introduction

- 12 In January 2012, we published a learner equality data report covering 2008/09 and 2009/10. The figures from that report have not changed, but this report additionally includes:
 - data from 2010/11
 - further breakdowns, for example by disability impairment type and age
 - funding streams updated in accordance with the new headings in the Post 16 Education & Skills: Learner Participation, Outcomes and Level of Highest Qualification Held Statistical First Release. University for Industry figures have been added to Learner Responsive to show the new Education and Training funding stream figures. Other Employer Responsive (non-Apprenticeships) figures have been added to Train to Gain to give the new Workplace Learning funding stream figures. Overall FE and Skills (all funding streams) figures and Apprenticeship figures are unaffected.
 - charts and graphs.
- 13 This report forms part of a range of equality information published by the Skills Funding Agency, including:
 - our [Single Equality Scheme](#), published in April 2012
 - a [report on equality and diversity in the Skills Funding Agency workforce](#) published in January 2012
 - [research on the experiences of lesbian, gay, bisexual and trans learners](#), published in August 2011
 - [a summary of progress made against our draft Single Equality Scheme](#), published in September 2011.
- 14 This report is accompanied by a spreadsheet which includes more detailed breakdowns, for example Apprenticeship data broken down by age, and full ethnicity breakdowns. Where indicated, some tables and charts in this report are extracts of these more detailed tables.
- 15 The next update of this report is due in early 2013, when final 2011/12 data becomes available. Additionally, an evaluation of learners' experiences of religion and belief equality is expected to be published later in 2012.
- 16 The purposes of these reports are to:
 - enable communities to hold the FE sector to account for its equality outcomes
 - inform learners
 - enable colleges, providers and other stakeholders to understand the impact of their activities on equality, and develop objectives to advance equality
 - help meet one of the specific duties under the Equality Act, to publish equality information.

Notes on Data

- 17 All learner data are drawn from the Individualised Learner Record (ILR). Full details are available in the Excel spreadsheets which accompany this report, and the table numbers correspond to those in the spreadsheets.
- 18 Demographic comparisons for gender and ethnicity are based on the Office for National Statistics Quarter 4 2010 Labour Force Survey, ages 19 to 64 in England.
- 19 Volumes are rounded to the nearest ten except Grand Totals which are rounded to the nearest hundred; percentages are calculated based on pre-rounded data.
- 20 In participation and starts tables, '-' Indicates a base value of less than five or a percentage of less than 0.5%. In success rate tables, '-' Indicates when the number of related cohorts is less than 30 or the number of achievers is under 5.
- 21 To allow for comparison between different ILR data sources, learner data tables use age as at 31 August of the academic year for all provision except Table 8 (Apprenticeships starts) which uses age at the start of the programme. The tables include learners aged 19 and over only, except Apprenticeship tables, which include under 19s.
- 22 Full-year numbers are a count of the number of learners that participated at any point during the year. Learners undertaking more than one course will appear only once. However, learners that are included in different data collections, whether that relates to different years or different funding streams, will be counted more than once.
- 23 Success rates are calculated as the number of learning aims achieved divided by the number of starts, excluding any learners who transferred onto another qualification within the same organisation. Learners who withdrew within the first 6 weeks of the qualification are excluded.
- 24 Age, gender, learning difficulties and/or disabilities and ethnicity are based upon self-declaration by the learner.
- 25 'Total BAME' is the sum of learners from a Black, Asian or Minority Ethnic group.

Participation

Participation by Ethnicity

26 In 2010/11, 19.2 per cent of adult learners were from a Black, Asian and Minority Ethnic (BAME) background. This was higher than the estimated proportion in the general English population (12.7 per cent) and higher than the proportions in 2008/09 (17.6 per cent) and 2009/10 (18.1 per cent). All BAME groups had a higher representation in FE and Skills than in the general population [Table 1A].

Table 1A: Adult (19+) FE and Skills Participation by Ethnicity (2008/09 to 2010/11)

Ethnicity	Funded Learners						English population ¹
	2008/09		2009/10		2010/11		2010
	Number	% of Total	Number	% of Total	Number	% of Total	
Asian or Asian British	282,890	7.5%	267,900	7.6%	257,380	8.1%	6.3%
Black or Black British	223,790	5.9%	215,770	6.1%	205,830	6.5%	2.9%
Mixed	62,030	1.6%	62,520	1.8%	60,830	1.9%	0.9%
Chinese or Other Ethnic Group	95,430	2.5%	93,830	2.7%	83,940	2.7%	2.5%
Total BAME	664,140	17.6%	640,020	18.1%	607,980	19.2%	12.7%
White	2,991,750	79.3%	2,807,040	79.3%	2,481,450	78.4%	87.2%
Not Known	115,350	3.1%	93,430	2.6%	73,770	2.3%	0.1%
Grand Total	3,771,200	100.0%	3,540,500	100.0%	3,163,200	100.0%	100.0%

- 27 In 2010/11, 8.7 per cent of apprentices of all ages were from a BAME background. This was lower than the proportion of BAME people in the English population (ages 19-64) as a whole. However, it is higher than the proportions of BAME apprentices in 2008/09 (6.7 per cent) and 2009/10 (7.1 per cent).
- 28 In 2010/11, compared to the population at large, there was a lower proportion of apprentices from Asian or Asian British; Black or Black British; and Chinese or Other Ethnic Group backgrounds; and a higher proportion from Mixed and White backgrounds [Table 1B].

Table 1B (extract²): Apprenticeship Participation by Ethnicity (2008/09 to 2010/11)

Ethnicity	Funded Learners						English population ¹
	2008/09		2009/10		2010/11		2010
	All Age Number	% of Total	All Age Number	% of Total	All Age Number	% of Total	
Asian or Asian British	13,370	3.0%	14,070	2.9%	24,020	3.6%	6.3%
Black or Black British	7,840	1.8%	10,010	2.0%	17,950	2.7%	2.9%
Mixed	6,430	1.4%	7,890	1.6%	11,380	1.7%	0.9%
Chinese or Other Ethnic Group	2,340	0.5%	2,700	0.5%	4,660	0.7%	2.5%
Total BAME	29,970	6.7%	34,680	7.1%	58,020	8.7%	12.7%
White	410,960	92.4%	452,680	92.1%	602,420	90.5%	87.2%
Not Known	3,830	0.9%	3,920	0.8%	5,460	0.8%	0.1%
Grand Total	444,800	100.0%	491,300	100.0%	665,900	100.0%	100.0%

² A full version of Table 1B, including breakdowns by age, is available in the spreadsheet accompanying this report.

29 In adult Workplace Learning provision in 2010/11, 17.0 per cent of learners were from a BAME background, higher than the proportion in the population at large (12.7 per cent) and higher than the proportions in 2008/09 (16.6 per cent) and 2009/10 (15.7 per cent) [Table 1C].

Table 1C: Adult (19+) Workplace Learning Participation by Ethnicity (2008/09 to 2010/11)

Ethnicity	Funded Learners						English population ¹
	2008/09		2009/10		2010/11		2010
	Number	% of Total	Number	% of Total	Number	% of Total	
Asian or Asian British	77,950	7.6%	70,040	7.2%	60,700	8.1%	6.3%
Black or Black British	59,940	5.8%	52,390	5.4%	42,650	5.7%	2.9%
Mixed	13,210	1.3%	12,790	1.3%	10,590	1.4%	0.9%
Chinese or Other Ethnic Group	19,310	1.9%	17,890	1.8%	13,770	1.8%	2.5%
Total BAME	170,420	16.6%	153,110	15.7%	127,700	17.0%	12.7%
White	837,180	81.3%	803,500	82.6%	614,260	81.5%	87.2%
Not Known	21,830	2.1%	15,600	1.6%	11,290	1.5%	0.1%
Grand Total	1,029,400	100.0%	972,200	100.0%	753,200	100.0%	100.0%

30 In adult Education and Training provision in 2010/11, 26.3 per cent of learners were from a BAME background. This was higher than the estimated proportion in the population as a whole (12.7 per cent) and higher than the proportions in 2008/09 (21.6 per cent) and 2009/10 (23.2 per cent).

Table 1D: Adult (19+) Education and Training Participation by Ethnicity (2008/09 to 2010/11)

Ethnicity	Funded Learners						English population ¹
	2008/09		2009/10		2010/11		2010
	Number	% of Total	Number	% of Total	Number	% of Total	
Asian or Asian British	145,020	8.6%	134,390	8.9%	124,030	10.2%	6.3%
Black or Black British	129,300	7.6%	124,970	8.3%	115,610	9.5%	2.9%
Mixed	35,700	2.1%	35,220	2.3%	32,630	2.7%	0.9%
Chinese or Other Ethnic Group	55,930	3.3%	54,080	3.6%	46,320	3.8%	2.5%
Total BAME	365,950	21.6%	348,660	23.2%	318,590	26.3%	12.7%
White	1,274,350	75.2%	1,113,190	73.9%	863,550	71.2%	87.2%
Not Known	53,810	3.2%	43,970	2.9%	31,270	2.6%	0.1%
Grand Total	1,694,100	100.0%	1,505,800	100.0%	1,213,400	100.0%	100.0%

31 In adult Skills for Life provision in 2010/11, 27.6 per cent of learners were from a BAME background, higher than the proportion in England as a whole (12.7 per cent), but lower than the proportions in 2008/09 (28.4 per cent) and 2009/10 (28.6 per cent) [Table 1E].

Table 1E: Adult (19+) FE and Skills - Skills for Life Participation by Ethnicity (2008/09 to 2010/11)

Ethnicity	Funded Learners						English population ¹
	2008/09		2009/10		2010/11		2010
	Number	% of Total	Number	% of Total	Number	% of Total	
Asian or Asian British	118,670	12.6%	111,100	12.2%	113,340	11.8%	6.3%
Black or Black British	84,190	8.9%	83,160	9.1%	88,030	9.2%	2.9%
Mixed	20,530	2.2%	20,640	2.3%	22,470	2.3%	0.9%
Chinese or Other Ethnic Group	44,580	4.7%	44,730	4.9%	41,590	4.3%	2.5%
Total BAME	267,970	28.4%	259,630	28.6%	265,420	27.6%	12.7%
White	655,290	69.3%	629,450	69.2%	679,400	70.6%	87.2%
Not Known	21,820	2.3%	20,060	2.2%	17,030	1.8%	0.1%
Grand Total	945,100	100.0%	909,100	100.0%	961,800	100.0%	100.0%

Participation by Gender

32 In 2010/11, 57.1 per cent of adult learners were female. This is higher than the proportion in the general English population (50.2 per cent), but lower than the proportions in 2008/09 (58.1 per cent) and 2009/10 (57.4 per cent) [Table 2A].

Table 2A: Adult (19+) FE and Skills Participation by Gender (2008/09 to 2010/11)

Gender	Funded Learners						English population ¹
	2008/09		2009/10		2010/11		2010
	Number	% of Total	Number	% of Total	Number	% of Total	
Female	2,191,890	58.1%	2,033,770	57.4%	1,807,390	57.1%	50.2%
Male	1,579,350	41.9%	1,506,730	42.6%	1,355,800	42.9%	49.8%
Grand Total	3,771,200	100.0%	3,540,500	100.0%	3,163,200	100.0%	100.0%

33 In 2010/11, 50.4 per cent of apprentices were female. This is slightly higher than the English population estimate of 50.2 per cent, and higher than the proportions in 2008/09 (45.8 per cent) and 2009/10 (46.9 per cent) [Table 2B].

Table 2B (extract³): Apprenticeship Participation by Age and Gender (2008/09 to 2010/11)

	Funded Learners						English population ¹
	2008/09		2009/10		2010/11		2010
Gender	Number	% of Total	Number	% of Total	Number	% of Total	
Female	203,800	45.8%	230,320	46.9%	335,530	50.4%	50.2%
Male	240,970	54.2%	260,960	53.1%	330,360	49.6%	49.8%
Grand Total	444,800	100.0%	491,300	100.0%	665,900	100.0%	100.0%

34 In 2010/11, 43.5 per cent of learners in Workplace Learning provision were female. This is lower than the English population estimate of 50.2 per cent, and lower than the proportions of female learners in 2008/09 (46.8 per cent) and 2009/10 (47.0 per cent) [Table 2C].

Table 2C: Adult (19+) Workplace Learning Participation by Gender (2008/09 to 2010/11)

	Funded Learners						English population ¹
	2008/09		2009/10		2010/11		2010
Gender	Number	% of Total	Number	% of Total	Number	% of Total	
Female	481,960	46.8%	456,840	47.0%	327,390	43.5%	50.2%
Male	547,460	53.2%	515,360	53.0%	425,860	56.5%	49.8%
Grand Total	1,029,400	100.0%	972,200	100.0%	753,200	100.0%	100.0%

³ A full version of Table 2B, including breakdowns by age, is available in the spreadsheet accompanying this report.

35 In 2010/11, 56.6 per cent of adult learners in Education and Training provision were female. This is higher than the estimated proportion of females in the English population, but lower than the proportions of female learners in 2008/09 (58.6 per cent) and 2009/10 (57.3 per cent) [Table 2D].

Table 2D: Adult (19+) Education and Training Participation by Gender (2008/09 to 2010/11)

	Funded Learners						English population ¹
	2008/09		2009/10		2010/11		2010
	2008/09	% of Total	2009/10	% of Total	Number	% of Total	
Female	992,650	58.6%	862,110	57.3%	687,100	56.6%	50.2%
Male	701,460	41.4%	643,710	42.7%	526,310	43.4%	49.8%
Grand Total	1,694,100	100.0%	1,505,800	100.0%	1,213,400	100.0%	100.0%

36 In 2010/11, 59.3 per cent of adult Skills for Life learners were female. This is higher than the estimated proportion in the general English population (50.2 per cent) and higher than the proportions in 2008/09 (58.5 per cent) and 2009/10 (58.1 per cent) [Table 2E].

Table 2E: Adult (19+) FE and Skills - Skills for Life Participation by Gender (2008/09 to 2010/11)

	Funded Learners						English population ¹
	2008/09		2009/10		2010/11		2010
	Number	% of Total	Number	% of Total	Number	% of Total	
Female	552,690	58.5%	528,220	58.1%	570,240	59.3%	50.2%
Male	392,390	41.5%	380,930	41.9%	391,610	40.7%	49.8%
Grand Total	945,100	100.0%	909,100	100.0%	961,800	100.0%	100.0%

Participation by Learning Difficulties and/or Disabilities

- 37 The Office for Disability Issues estimates that in 2009/10, there were 10.9 million disabled people in Great Britain⁴, which equates to 17.3 per cent of the total population. However, learner figures and population estimates cannot be directly compared as they are collected in different ways. In particular, impairments are defined differently; learner data are based on self-declaration, and there was a relatively large proportion of 'not knowns' in the learner data.
- 38 In 2010/11, 11.2 per cent of all adult learners declared learning difficulties and/or disabilities. This is higher than the proportions in 2008/09 (10.3 per cent) and in 2009/10 (10.7 per cent) [Table 3A.1].

Table 3A.1: Adult (19+) FE and Skills Participation by Learning Difficulties and/or Disabilities (2008/09 to 2010/11)

Learning Difficulties and/or Disabilities	Funded Learners					
	2008/09		2009/10		2010/11	
	Number	% of Total	Number	% of Total	Number	% of Total
Learning Difficulty/Disability	387,810	10.3%	378,160	10.7%	354,000	11.2%
No Learning Difficulty/Disability	3,104,720	82.3%	2,942,580	83.1%	2,616,490	82.7%
Not Known	278,710	7.4%	219,760	6.2%	192,700	6.1%
Grand Total	3,771,200	100.0%	3,540,500	100.0%	3,163,200	100.0%

⁴ Office for Disability Issues, Disability prevalence estimates 2009/10
Report issued on 2 May 2012
Equality and Diversity data report, 2008/09 to 2010/11

39 In 2010/11:

- 0.9 per cent of all adult learners declared a mental health difficulty
- 0.8 per cent declared a disability affecting mobility
- 0.7 per cent declared a hearing impairment
- 0.7 per cent declared multiple disabilities
- 1.6 per cent declared another medical condition [Table 3A.2].

Table 3A.2: Adult (19+) FE and Skills Participation by Disability (2008/09 to 2010/11)

Disability	Funded Learners					
	2008/09		2009/10		2010/11	
	Number	% of Total	Number	% of Total	Number	% of Total
Visual Impairment	17,630	-	17,360	-	14,900	-
Hearing Impairment	24,070	0.6%	24,690	0.7%	22,170	0.7%
Disability Affecting Mobility	27,810	0.7%	27,720	0.8%	24,910	0.8%
Other Physical Disability	13,480	-	13,210	-	12,520	-
Other Medical Condition (For Example Epilepsy, Asthma, Diabetes)	49,590	1.3%	51,610	1.5%	49,150	1.6%
Emotional/Behavioural Difficulties	6,130	-	6,500	-	6,700	-
Mental Health Difficulty	27,590	0.7%	28,510	0.8%	28,440	0.9%
Temporary Disability After Illness (For Example Post-Viral) or Accident	2,190	-	2,030	-	1,820	-
Profound Complex Disabilities	1,590	-	1,570	-	1,820	-
Asperger's Syndrome	1,320	-	2,390	-	2,980	-
Multiple Disabilities	19,690	0.5%	19,900	0.6%	20,860	0.7%
Other	41,650	1.1%	42,320	1.2%	36,490	1.2%
No Disability	3,201,900	84.9%	3,042,130	85.9%	2,708,150	85.6%
Not Known	336,600	8.9%	260,550	7.4%	232,300	7.3%
Grand Total	3,771,200	100.0%	3,540,500	100.0%	3,163,200	100.0%

40 In 2010/11:

- 2.4 per cent of all adult learners declared they have dyslexia
- 1.5 per cent declared a moderate learning difficulty [Table 3A.3].

Table 3A.3: Adult (19+) FE and Skills Participation by Learning Difficulty (2008/09 to 2010/11)

Learning Difficulty	Funded Learners					
	2008/09		2009/10		2010/11	
	Number	% of Total	Number	% of Total	Number	% of Total
Moderate Learning Difficulty	52,790	1.4%	52,430	1.5%	48,900	1.5%
Severe Learning Difficulty	10,350	-	9,870	-	9,180	-
Dyslexia	68,940	1.8%	76,500	2.2%	74,480	2.4%
Dyscalculia	2,390	-	2,480	-	2,570	-
Other Specific Learning Difficulty	6,590	-	6,190	-	5,310	-
Autism Spectrum Disorder	1,330	-	2,400	-	3,410	-
Multiple Learning Difficulties	7,400	-	8,050	-	8,880	-
Other	36,110	1.0%	35,690	1.0%	30,400	1.0%
No Learning Difficulty	3,230,490	85.7%	3,070,050	86.7%	2,730,940	86.3%
Not Known	354,860	9.4%	276,850	7.8%	249,120	7.9%
Grand Total	3,771,200	100.0%	3,540,500	100.0%	3,163,200	100.0%

41 In 2010/11, 8.4 per cent of apprentices declared learning difficulties and/or disabilities. This is lower than the proportions in 2008/09 (10.1 per cent) and 2009/10 (9.7 per cent) [Table 3b.1].⁵

Table 3B.1 (extract): Apprenticeship Participation by Learning Difficulties and/or Disabilities (2008/09 to 2010/11)

	Funded Learners					
	2008/09		2009/10		2010/11	
	All Age		All Age		All Age	
Learners with Learning Difficulties and/or Disabilities	Number	% of Total	Number	% of Total	Number	% of Total
Learning Difficulty/Disability	44,950	10.1%	47,620	9.7%	55,950	8.4%
No Learning Difficulty/Disability	396,540	89.2%	439,530	89.5%	604,750	90.8%
Not Known	3,280	0.7%	4,130	0.8%	5,190	0.8%
Grand Total	444,800	100.0%	491,300	100.0%	665,900	100.0%

42 In 2010/11, 6.0 per cent of learners in Workplace Learning provision declared learning difficulties and/or disabilities. This was a higher proportion than in 2008/09 (5.6 per cent) and the same proportion as in 2009/10 [Table 3C.1]⁶.

Table 3C.1: Adult (19+) Workplace Learning Participation by Learning Difficulties and/or Disabilities (2008/09 to 2010/11)

	Funded Learners					
	2008/09		2009/10		2010/11	
	All Age		All Age		All Age	
Learning Difficulties and/or Disabilities	Number	% of Total	Number	% of Total	Number	% of Total
Learning Difficulty/Disability	57,690	5.6%	58,770	6.0%	45,100	6.0%
No Learning Difficulty/Disability	935,840	90.9%	892,120	91.8%	692,560	91.9%
Not Known	35,890	3.5%	21,310	2.2%	15,590	2.1%
Grand Total	1,029,400	100.0%	972,200	100.0%	753,200	100.0%

⁵ Full breakdowns are available of participation by disability and learning difficulty impairment type in the spreadsheet accompanying this report [Tables 3b.2 and 3b.3]

⁶ Full breakdowns are available of participation by disability and learning difficulty impairment type in the spreadsheet accompanying this report [Tables 3C.2 and 3C.3]

- 43 In 2010/11, 15.2 per cent of learners in Education and Training provision declared learning difficulties and/or disabilities. This was a higher proportion than in 2008/09 (13.0 per cent) and 2009/10 (13.7 per cent) [Table 3D.1].⁷

Table 3D.1: Adult (19+) Education and Training Participation by Learning Difficulties and/or Disabilities (2008/09 to 2010/11)

Learning Difficulties and/or Disabilities	Funded Learners					
	2008/09		2009/10		2010/11	
	Number	% of Total	Number	% of Total	Number	% of Total
Learning Difficulty/Disability	220,120	13.0%	205,830	13.7%	184,220	15.2%
No Learning Difficulty/Disability	1,340,280	79.1%	1,196,240	79.4%	932,920	76.9%
Not Known	133,710	7.9%	103,750	6.9%	96,260	7.9%
Grand Total	1,694,100	100.0%	1,505,800	100.0%	1,213,400	100.0%

- 44 In 2010/11, 12.0 per cent of Skills for Life learners declared learning difficulties and/or disabilities. This was a lower proportion than in 2008/09 (12.7 per cent) and in 2009/10 (13.0 per cent) [Table 3E.1].

Table 3E.1: Adult (19+) FE and Skills - Skills for Life Participation by Learning Difficulties and/or Disabilities (2008/09 to 2009/10)

Learning Difficulties and/or Disabilities	Funded Learners					
	2008/09		2009/10		2010/11	
	Number	% of Total	Number	% of Total	Number	% of Total
Learning Difficulty/Disability	120,430	12.7%	117,980	13.0%	115,400	12.0%
No Learning Difficulty/Disability	770,680	81.5%	746,180	82.1%	794,320	82.6%
Not Known	53,970	5.7%	44,990	4.9%	52,120	5.4%
Grand Total	945,100	100.0%	909,100	100.0%	961,800	100.0%

⁷ Full breakdowns are available of participation by disability and learning difficulty impairment type in the spreadsheet accompanying this report [Tables 3D.2 and 3D.3]
Report issued on 2 May 2012

Participation by Age

45 Among all adult learners in 2010/11:

- 23.5 per cent were aged 19-24, a higher proportion than in 2008/09 (20.3 per cent) and 2009/10 (21.8 per cent)
- 24.7 per cent were aged 25-34, a higher proportion than in 2008/09 (24.2 per cent) and 2009/10 (24.5 per cent)
- 22.1 per cent were aged 35-44, a lower proportion than in 2008/09 (24.1 per cent) and 2009/10 (23.1 per cent)
- 20.5 per cent were aged 45-59, a lower proportion than in 2008/09 (21.7 per cent) and 2009/10 (21.3 per cent)
- 8.8 per cent were aged 60+, a slightly lower proportion than in 2008/09 (9.1 per cent) and the same as in 2009/10 [Table 4A].

Table 4A: Adult (19+) FE and Skills Participation by Age (2008/09 to 2010/11)

Age	Funded Learners					
	2008/09		2009/10		2010/11	
	Number	% of Total	Number	% of Total	Number	% of Total
19-24	764,150	20.3%	770,620	21.8%	744,220	23.5%
25-34	914,150	24.2%	868,030	24.5%	782,870	24.7%
35-44	907,100	24.1%	819,050	23.1%	698,520	22.1%
45-59	819,250	21.7%	754,790	21.3%	649,720	20.5%
60+	342,760	9.1%	310,690	8.8%	277,700	8.8%
Not Known	23,820	0.6%	17,330	-	10,170	-
Grand Total	3,771,200	100.0%	3,540,500	100.0%	3,163,200	100.0%

46 In Apprenticeships in 2010/11:

- 37.8 per cent of apprentices were aged 19-24, a lower proportion than in 2008/09 (43.1 per cent) and 2009/10 (42.9 per cent)
- 13.7 per cent of apprentices were aged 25-34, a higher proportion than in 2008/09 (9.4 per cent) and 2009/10 (10.0 per cent)
- 9.4 per cent of apprentices were aged 35-44, a higher proportion than in 2008/09 (5.0 per cent) and 2009/10 (5.3 per cent)
- 8.0 per cent of apprentices were aged 45-59, a higher proportion than in 2008/09 (3.2 per cent) and 2009/10 (3.7 per cent) [Table 4B].

Table 4B: Apprenticeship Participation by Age (2008/09 to 2010/11)

Age	Funded Learners					
	2008/09		2009/10		2010/11	
	Number	% of Total	Number	% of Total	Number	% of Total
Under 16	2,710	0.6%	4,130	0.8%	4,150	0.6%
16	38,220	8.6%	39,100	8.0%	42,610	6.4%
17	64,780	14.6%	67,620	13.8%	71,300	10.7%
18	68,200	15.3%	75,580	15.4%	85,070	12.8%
19-24	191,760	43.1%	210,930	42.9%	251,900	37.8%
25-34	42,000	9.4%	48,930	10.0%	91,440	13.7%
35-44	22,370	5.0%	26,270	5.3%	62,490	9.4%
45-59	14,190	3.2%	17,970	3.7%	53,450	8.0%
60+	550	-	740	-	3,490	0.5%
Not Known	-	-	-	-	-	-
Grand Total	444,800	100.0%	491,300	100.0%	665,900	100.0%

47 In Adult Workplace Learning provision in 2010/11:

- 17.8 per cent of learners were aged 19-24
- 26.3 per cent of learners were aged 25-34
- 26.8 per cent of learners were aged 35-44
- 26.6 per cent of learners were aged 45-59, and
- 2.6 per cent of learners were aged 60+ [Table 4C].

Table 4C: Adult (19+) Workplace Learning Participation by Age (2008/09 to 2010/11)

Age	Funded Learners					
	2008/09		2009/10		2010/11	
	Number	% of Total	Number	% of Total	Number	% of Total
19-24	160,780	15.6%	158,920	16.3%	134,140	17.8%
25-34	268,390	26.1%	252,890	26.0%	198,080	26.3%
35-44	300,530	29.2%	271,890	28.0%	201,500	26.8%
45-59	270,900	26.3%	262,100	27.0%	200,030	26.6%
60+	28,820	2.8%	26,400	2.7%	19,500	2.6%
Not Known	-	-	-	-	-	-
Grand Total	1,029,400	100.0%	972,200	100.0%	753,200	100.0%

48 In Adult Education and Training provision in 2010/11:

- 25.0 per cent of learners were aged 19-24, a higher proportion than in 2008/09 (21.1 per cent) and 2009/10 (22.9 per cent)
- 28.1 per cent of learners were aged 25-34, a higher proportion than in 2008/09 (26.5 per cent) and 2009/10 (27.2 per cent)
- 22.7 per cent of learners were aged 35-44, a lower proportion than in 2008/09 (24.0 per cent) and 2009/10 (23.3 per cent)
- 18.6 per cent of learners were aged 45-59, a lower proportion than in 2008/09 (20.6 per cent) and 2009/10 (19.5 per cent)
- 5.5 per cent of learners were aged 60+, a lower proportion than in 2008/09 (7.4 per cent) and 2009/10 (6.7 per cent) [Table 4D].

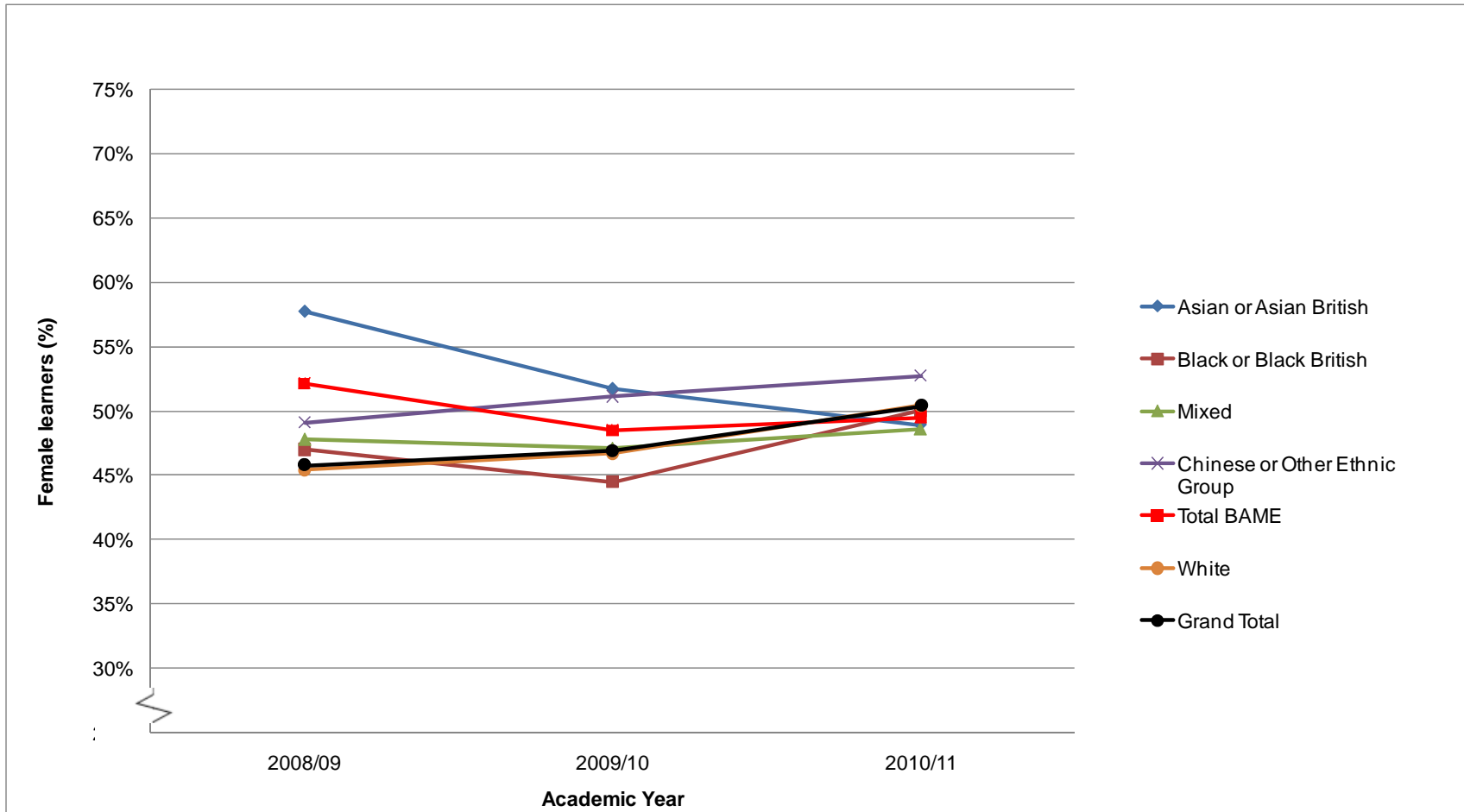
Table 4D: Adult (19+) Education and Training Participation by Age (2008/09 to 2010/11)

Age	Funded Learners					
	2008/09		2009/10		2010/11	
	Number	% of Total	Number	% of Total	Number	% of Total
19-24	357,740	21.1%	345,580	22.9%	303,900	25.0%
25-34	448,490	26.5%	409,580	27.2%	341,140	28.1%
35-44	407,110	24.0%	350,530	23.3%	275,140	22.7%
45-59	348,610	20.6%	294,140	19.5%	225,890	18.6%
60+	125,210	7.4%	101,580	6.7%	66,900	5.5%
Not Known	6,930	-	4,410	-	440	-
Grand Total	1,694,100	100.0%	1,505,800	100.0%	1,213,400	100.0%

Participation by Ethnicity and Gender

49 In 2010/11, 49.5 per cent of BAME apprentices were female. This was lower than the proportion of White apprentices who were female (50.4 per cent) and lower than the proportion of BAME apprentices who were female in 2008/09 (52.1 per cent) [Chart 5A]⁸.

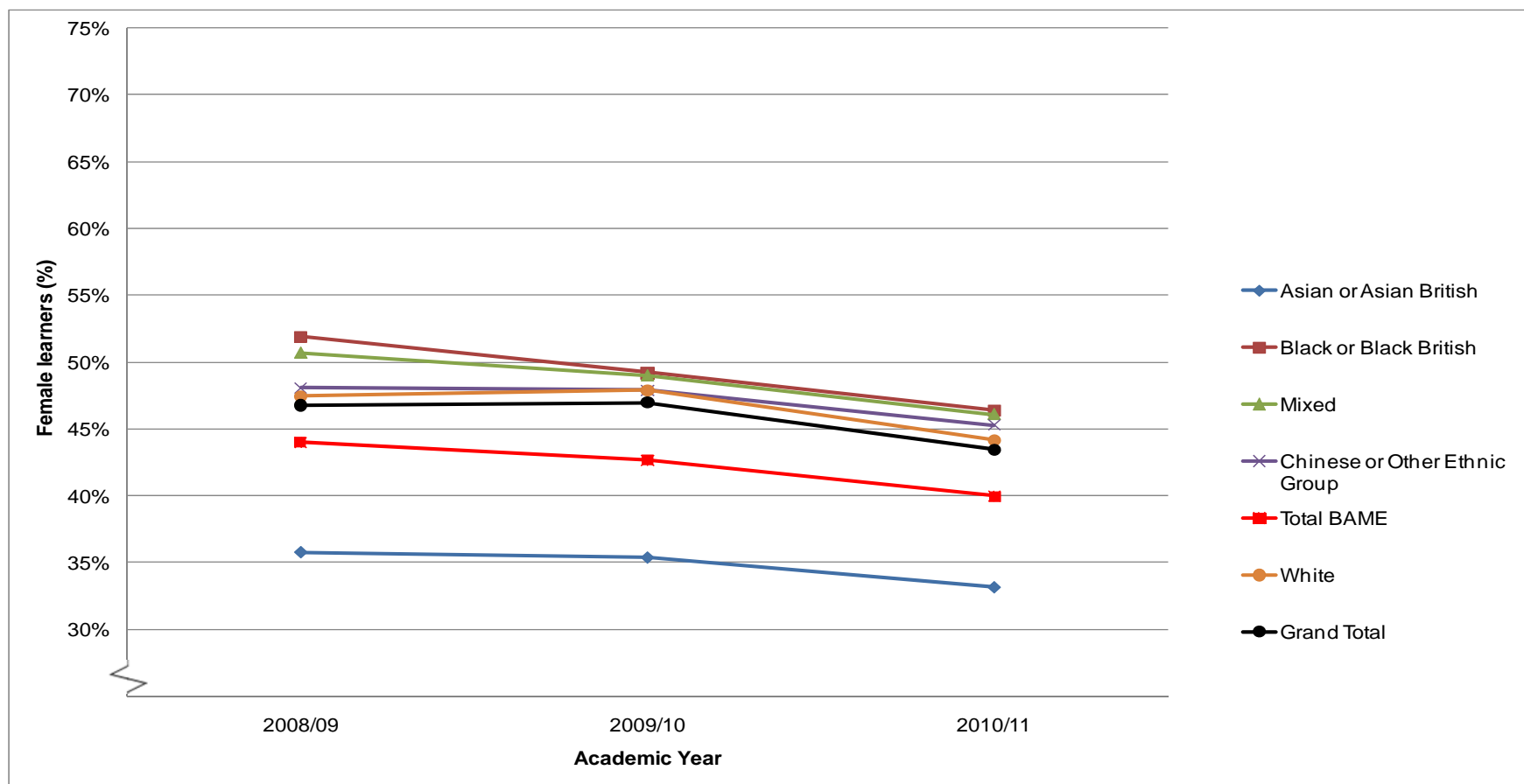
Chart 5A: Proportion of Learners (All Ages) Participating in Apprenticeships that were Female, by Ethnicity (2008/09-2010/11)



⁸ Full data, including breakdowns by age, are available in Table 5A in the spreadsheet accompanying this report.

50 In adult Workplace Learning in 2010/11, 40.0 per cent of BAME learners were female, lower than the proportion of White learners who were female (44.2 per cent). It was also lower than the proportion of BAME learners who were female in 2008/09 (44.0 per cent). Participation by females was lowest among Asian or Asian British learners, among whom 33.2 per cent were female in 2010/11 [Chart 5B]⁹.

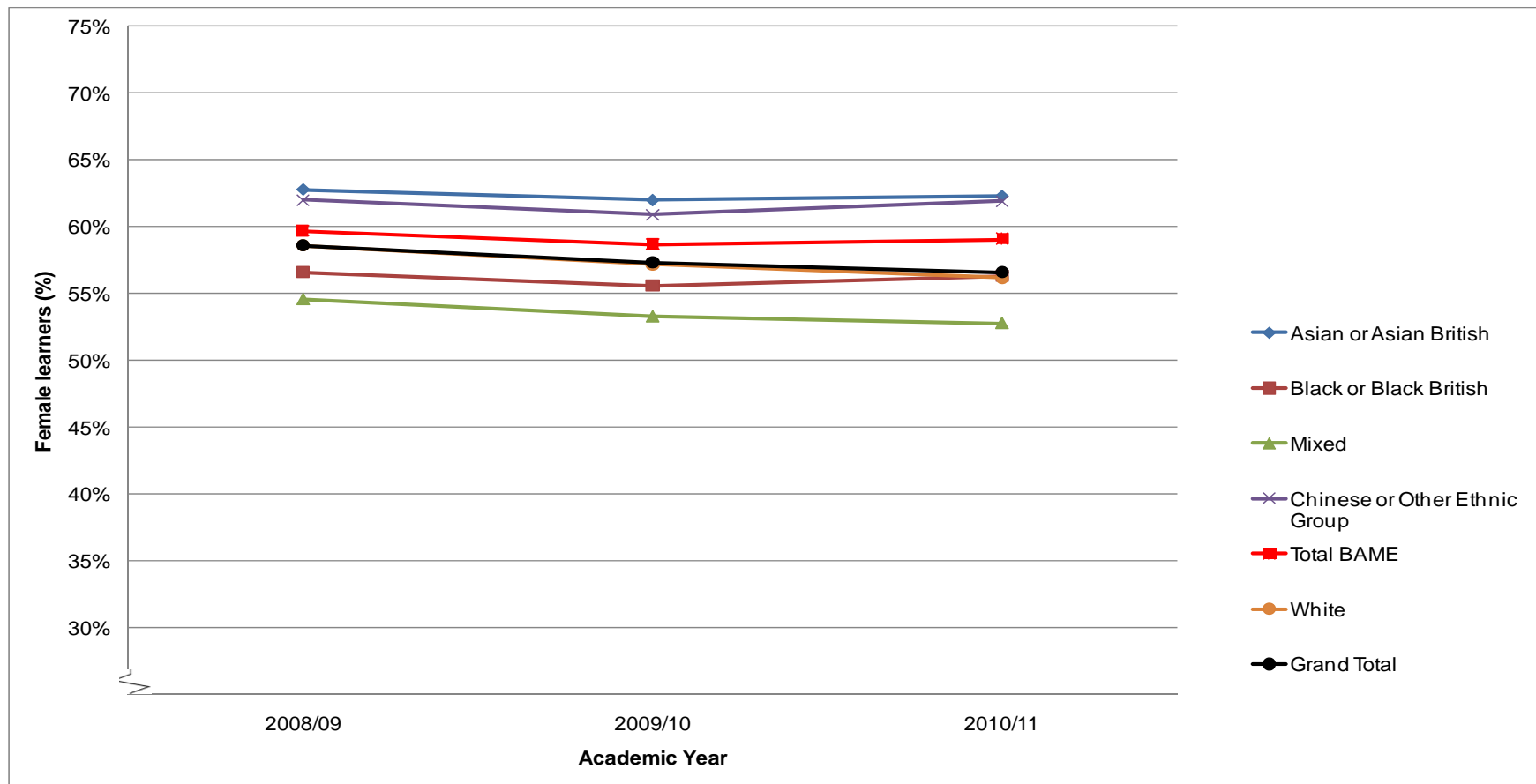
Chart 5B: Proportion of Adult (19+) Learners Participating in Workplace Learning that were Female, by Ethnicity (2008/09-2010/11)



⁹ Full data are available in Table 5B in the spreadsheet accompanying this report.
 Report issued on 2 May 2012
 Equality and Diversity data report, 2008/09 to 2010/11

51 In adult Education and Training provision in 2010/11, 59.1 per cent of BAME learners were female. This was higher than the proportion of White learners who were female (56.2 per cent), but lower than the proportion of BAME learners who were female in 2008/09 (59.7 per cent) [Chart 5C]¹⁰.

Chart 5C Proportion of Adult (19+) Learners Participating in Education and Training Provision that were Female, by Ethnicity (2008/09-2010/11)

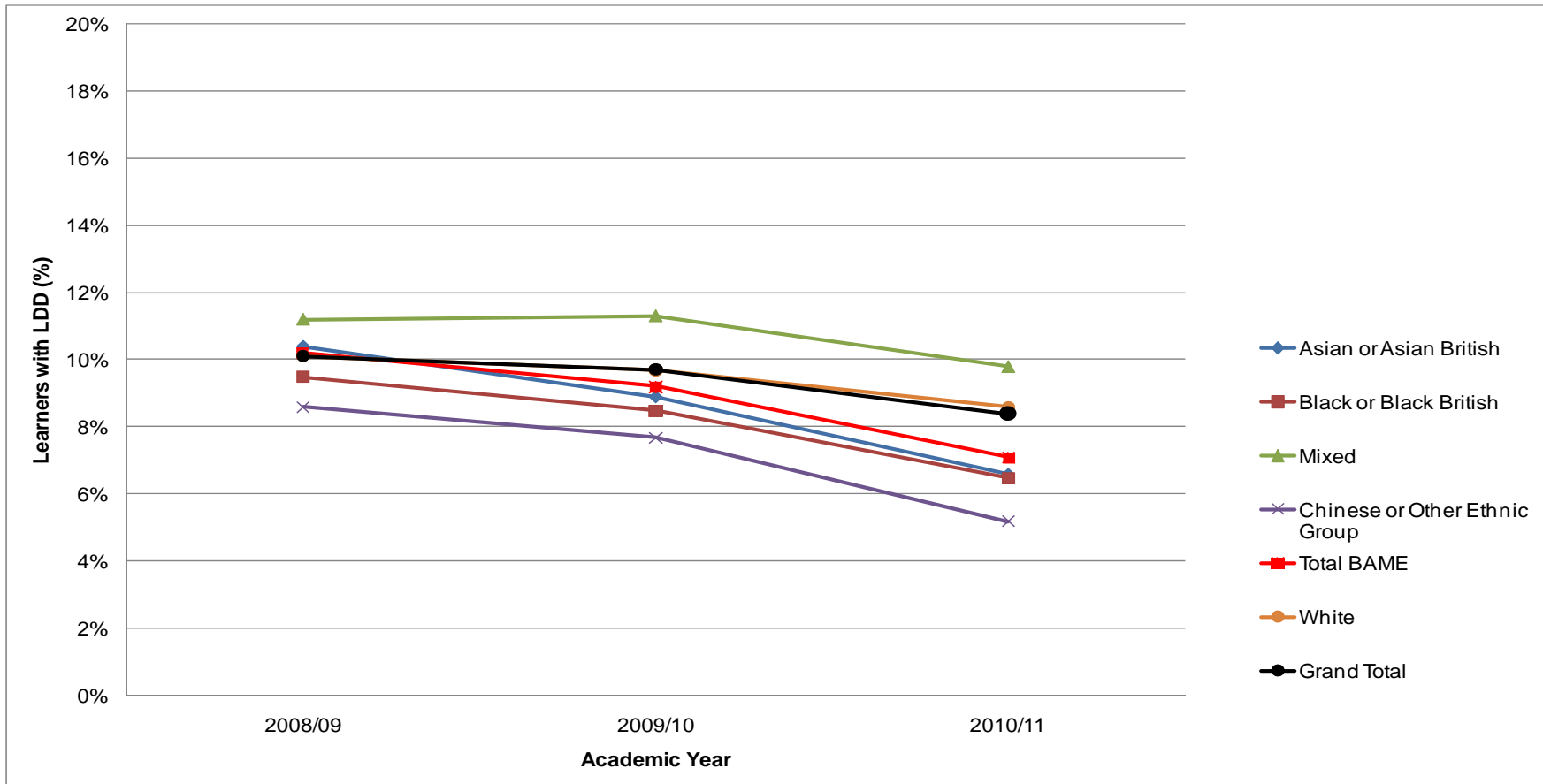


¹⁰ Full data are available in Table 5C in the spreadsheet accompanying this report.

Participation by Ethnicity and Learning Difficulties and/or Disabilities

52 In 2010/11, 7.1 per cent of BAME apprentices declared an LDD, compared to 8.6 per cent of White apprentices. In 2010/11, LDD declarations were highest among apprentices of Mixed ethnicity (9.8 per cent) and lowest among apprentices from Chinese or Other Ethnic Groups (5.2 per cent) [Chart 6A]¹¹.

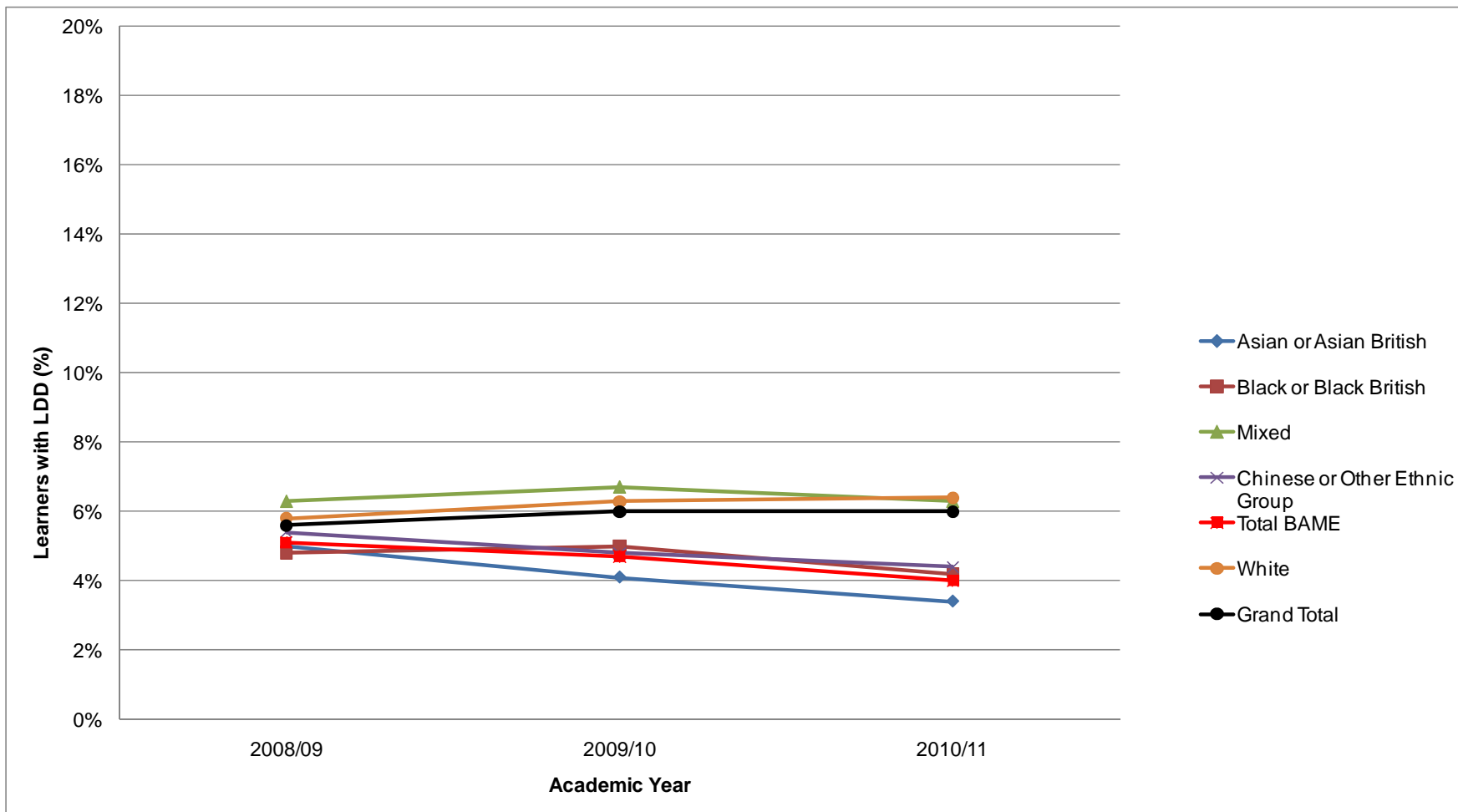
Chart 6A: Proportion of Learners (All Ages) Participating in Apprenticeships that had LDD, by Ethnicity (2008/09-2010/11)



¹¹ Full figures, including breakdowns by age group, are available in Table 6A of the spreadsheet accompanying this report.

53 In adult Workplace Learning in 2010/11, 4.0 per cent of BAME learners declared an LDD, compared to 6.4 per cent of White learners [Chart 6B].¹²

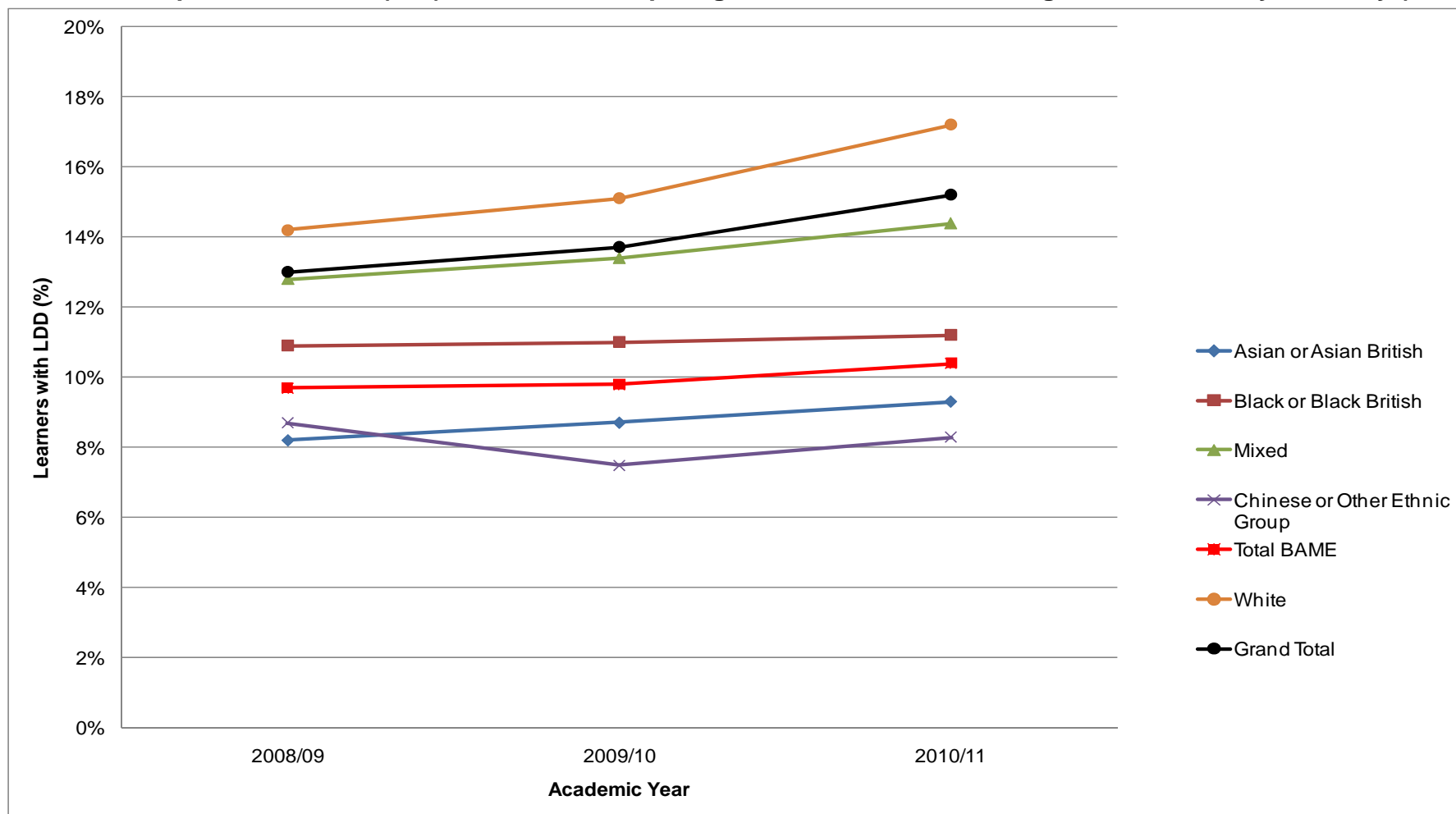
Chart 6B: Proportion of Adult (19+) Learners Participating in Workplace Learning that had LDD, by Ethnicity (2008/09-2010/11)



¹² Full data are available in Table 6B in the spreadsheet accompanying this report.
 Report issued on 2 May 2012
 Equality and Diversity data report, 2008/09 to 2010/11

54 In adult Education and Training provision in 2010/11, 10.4 per cent of BAME learners declared an LDD, compared to 17.2 per cent of White learners [Chart 6C].¹³

Chart 6C: Proportion of Adult (19+) Learners Participating in Education and Training that had LDD, by Ethnicity (2008/09-2010/11)

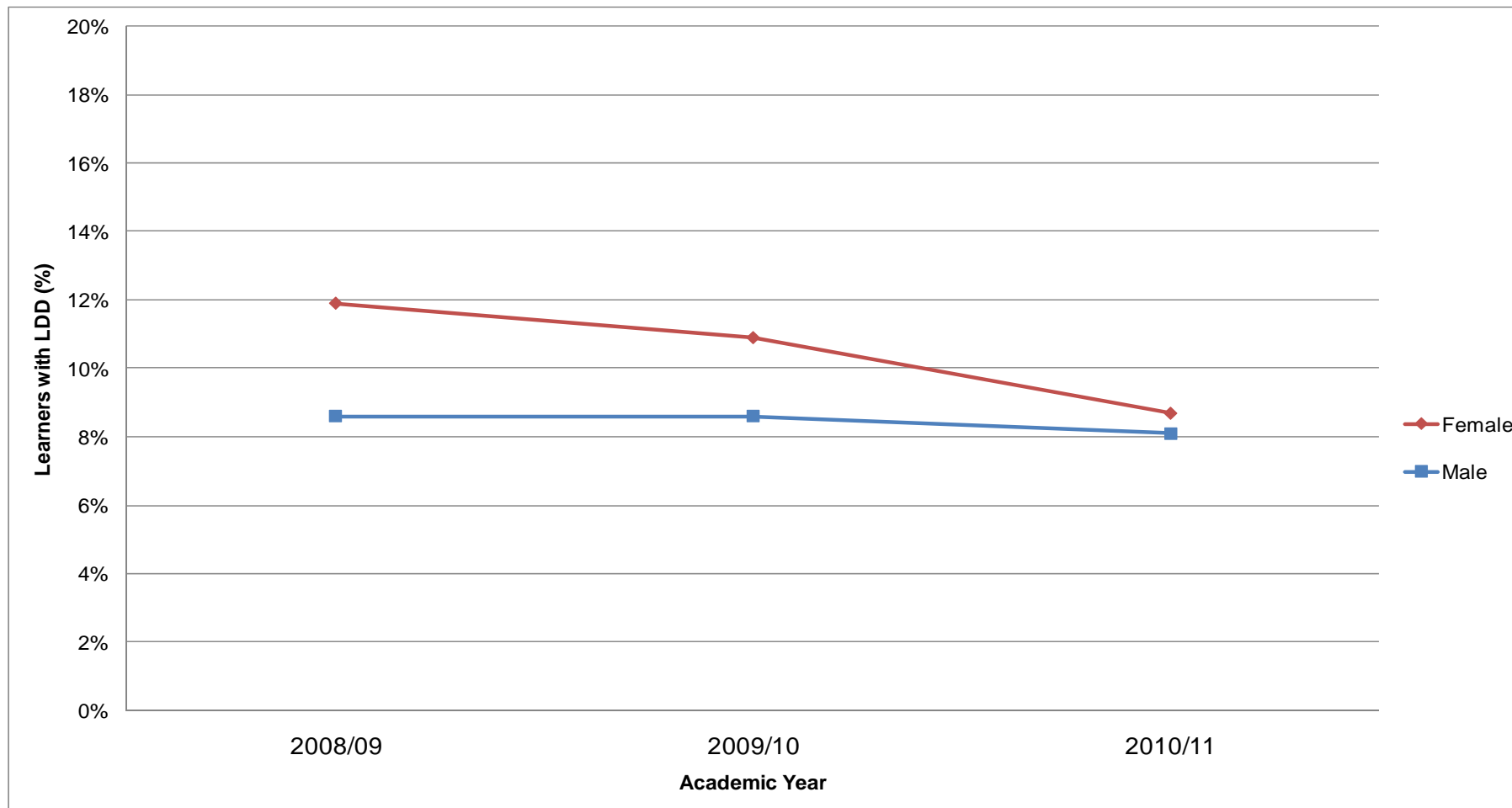


¹³ Full data are available in Table 6C of the spreadsheet accompanying this report.
 Report issued on 2 May 2012
 Equality and Diversity data report, 2008/09 to 2010/11

Participation by Gender and Learning Difficulties and/or Disabilities

55 In 2010/11, 8.7 per cent of female apprentices declared an LDD, compared to 8.1 per cent of male learners [Chart 7A].¹⁴

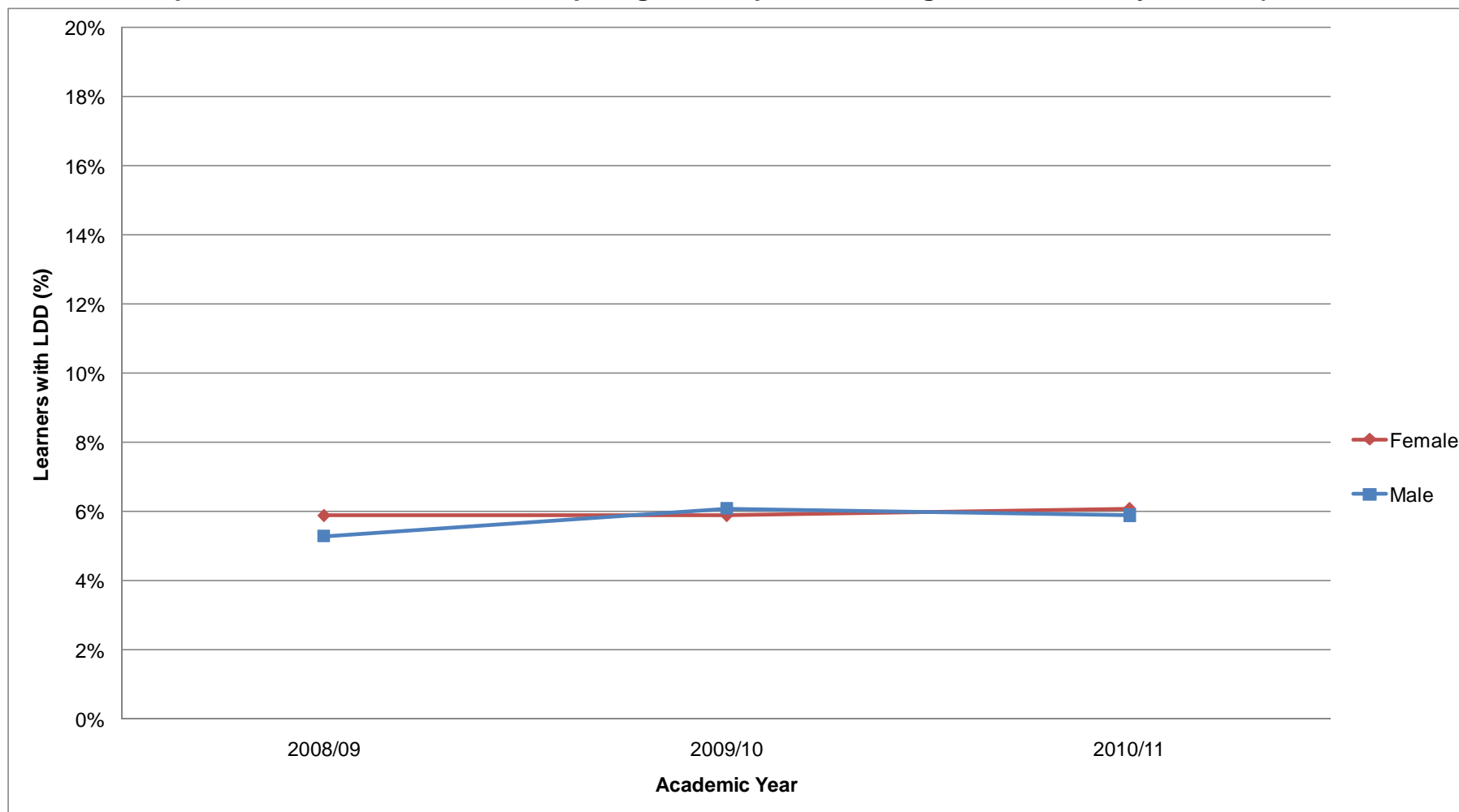
Chart 7A: Proportion of Learners (All Ages) Participating in Apprenticeships that had LDD, by Gender (2008/09-2010/11)



¹⁴ Full data, including breakdowns by age, are available in Table 7A in the spreadsheet accompanying this report.

56 In adult Workplace Learning in 2010/11, 6.1 per cent of female learners declared an LDD, compared to 5.9 per cent of male learners [Chart 7B].¹⁵

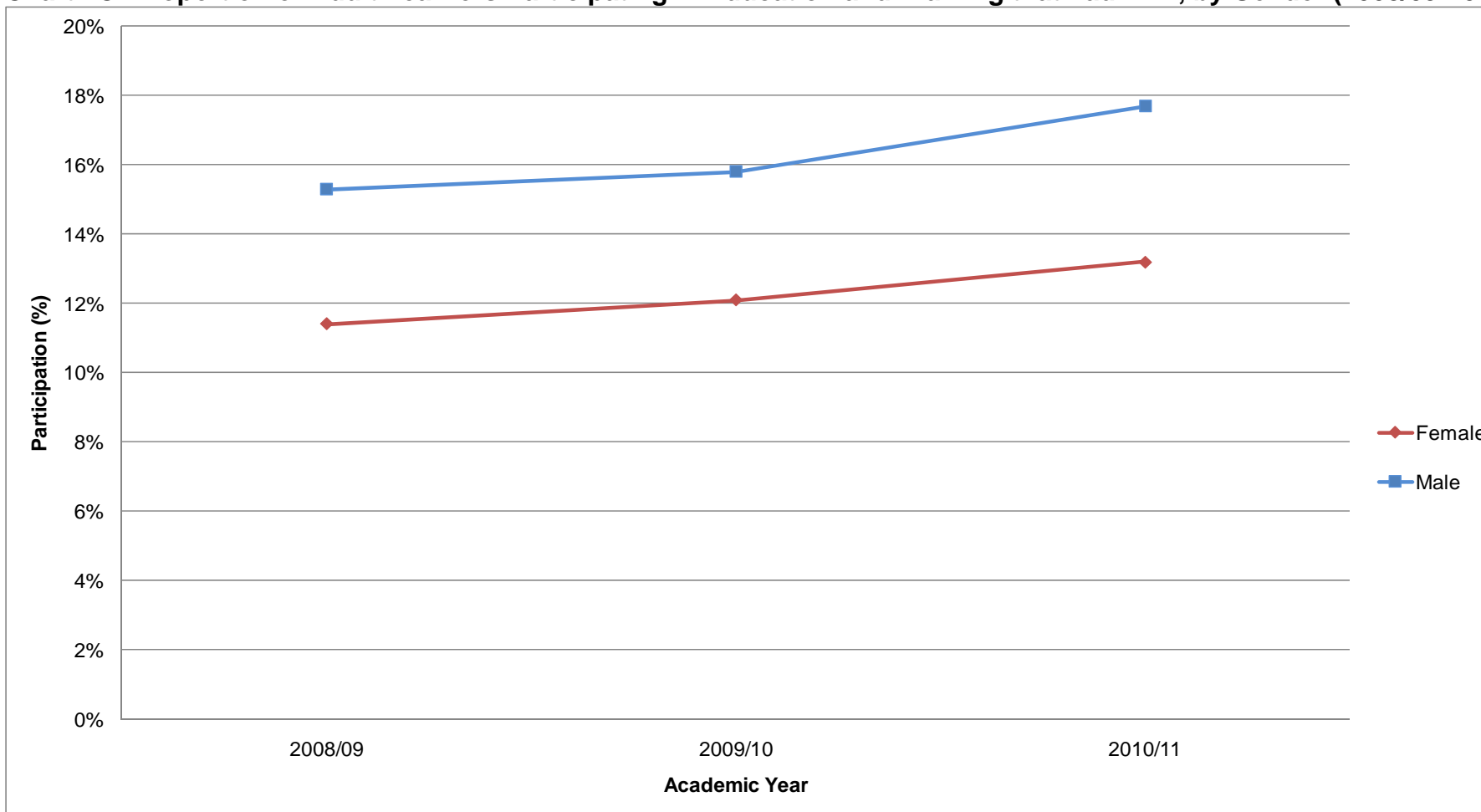
Chart 7B: Proportion of Adult Learners Participating in Workplace Learning that had LDD, by Gender (2008/09-2010/11)



¹⁵ Full data are available in Table 7B of the spreadsheet accompanying this report.

57 In adult Education and Training provision in 2010/11, 13.2 per cent of female learners declared an LDD, compared to 17.7 per cent of male learners [Chart 7C].¹⁶

Chart 7C: Proportion of Adult Learners Participating in Education and Training that had LDD, by Gender (2008/09-2010/11)



¹⁶ Full data are available in Table 7C of the spreadsheet accompanying this report.

Apprenticeship starts by Sector Subject Area and Gender

58 In 2010/11, in the five largest Apprenticeship Sector Subject Areas by number of starts:

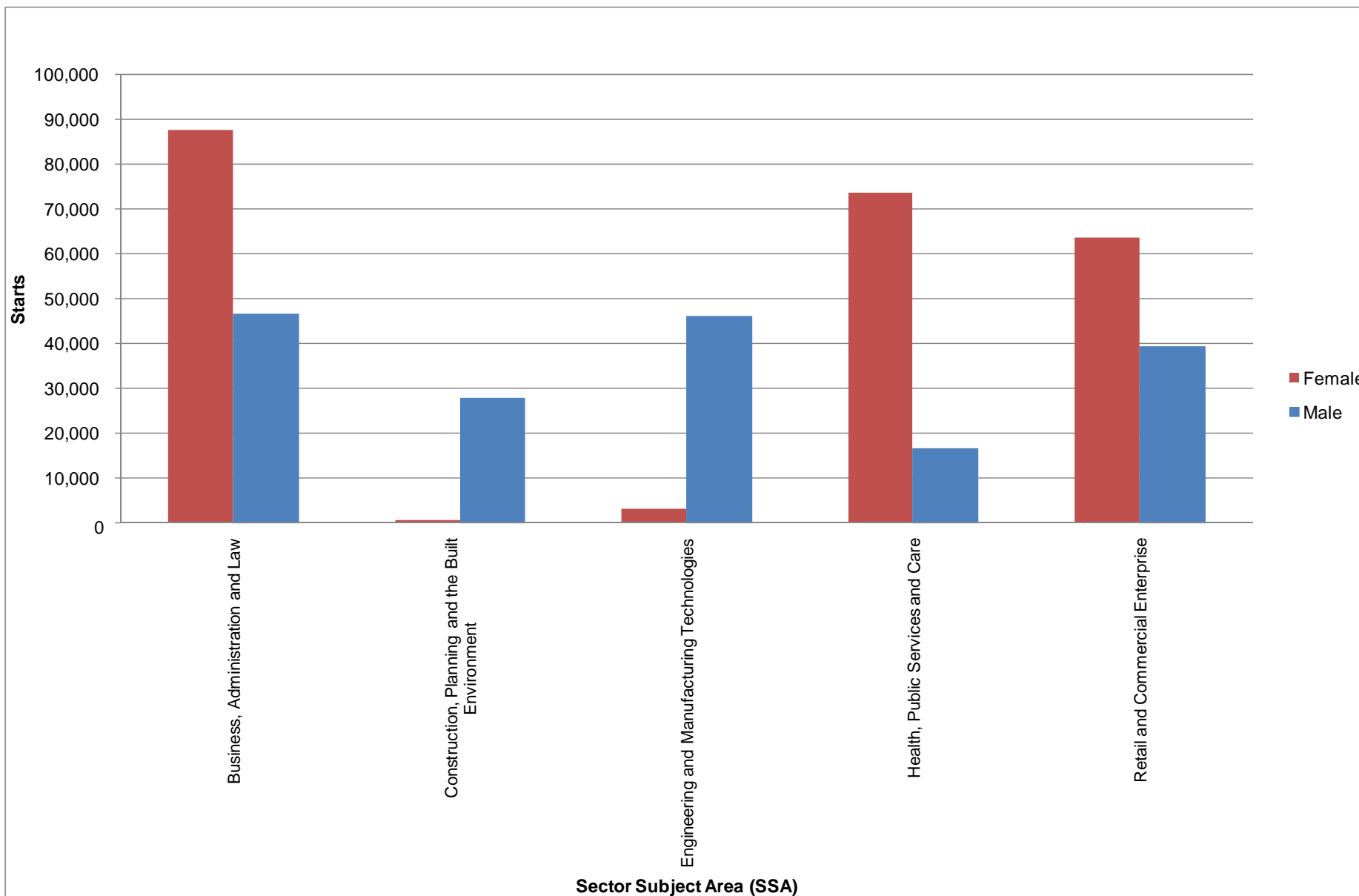
- 65.3 per cent of Apprenticeship starts in Business, Administration and Law are by females
- 61.8 per cent of Apprenticeship starts in Retail and Commercial Enterprise are by females
- 81.7 per cent of Apprenticeship starts in Health, Public Services and Care are by females
- 6.1 per cent of Apprenticeship starts in Engineering and Manufacturing Technologies apprentices are by females
- 1.6 per cent of Apprenticeship starts in Construction, Planning and the Built Environment apprentices are by females [Table 8]¹⁷.

Table 8: Apprenticeship Starts by Sector Subject Area (SSA) and Gender (2008/09 to 2010/11)

Sector Subject Area (SSA)	2008/09			2009/10			2010/11		
	Female % of SSA	Male % of SSA	All Number	Female % of SSA	Male % of SSA	All Number	Female % of SSA	Male % of SSA	All Number
Agriculture, Horticulture and Animal Care	48.9%	51.1%	5,210	43.7%	56.3%	5,690	41.6%	58.4%	7,380
Arts, Media and Publishing	41.1%	58.9%	230	34.1%	65.9%	440	31.7%	68.3%	1,030
Business, Administration and Law	69.7%	30.3%	64,060	67.3%	32.7%	76,590	65.3%	34.7%	133,820
Construction, Planning and the Built Environment	1.7%	98.3%	29,220	1.6%	98.4%	25,210	1.6%	98.4%	28,090
Education and Training	90.3%	9.7%	1,160	85.7%	14.3%	860	87.9%	12.1%	4,070
Engineering and Manufacturing Technologies	3.9%	96.1%	36,990	4.0%	96.0%	37,860	6.1%	93.9%	48,970
Health, Public Services and Care	85.7%	14.3%	34,890	84.1%	15.9%	44,150	81.7%	18.3%	89,970
Information and Communication Technology	21.1%	78.9%	8,820	18.9%	81.1%	12,570	25.2%	74.8%	19,520
Languages, Literature and Culture	-	-	-	-	-	-	-	-	-
Leisure, Travel and Tourism	37.9%	62.1%	11,330	30.7%	69.3%	14,690	29.2%	70.8%	21,590
Preparation for Life and Work	-	-	-	-	-	-	-	-	-
Retail and Commercial Enterprise	68.5%	31.5%	48,030	61.3%	38.7%	61,620	61.8%	38.2%	102,770
Science and Mathematics	-	-	-	-	-	-	37.5%	62.5%	10
Unknown	-	-	-	-	-	-	-	-	-
Grand Total	49.7%	50.3%	239,900	49.6%	50.4%	279,700	53.8%	46.2%	457,200

¹⁷ Full data, including breakdowns by age, are available in Table 8 of the spreadsheet accompanying this report.

Chart 8: All Age Apprenticeship Starts by Sector Subject Area and Gender, five largest SSAs (2010/11)

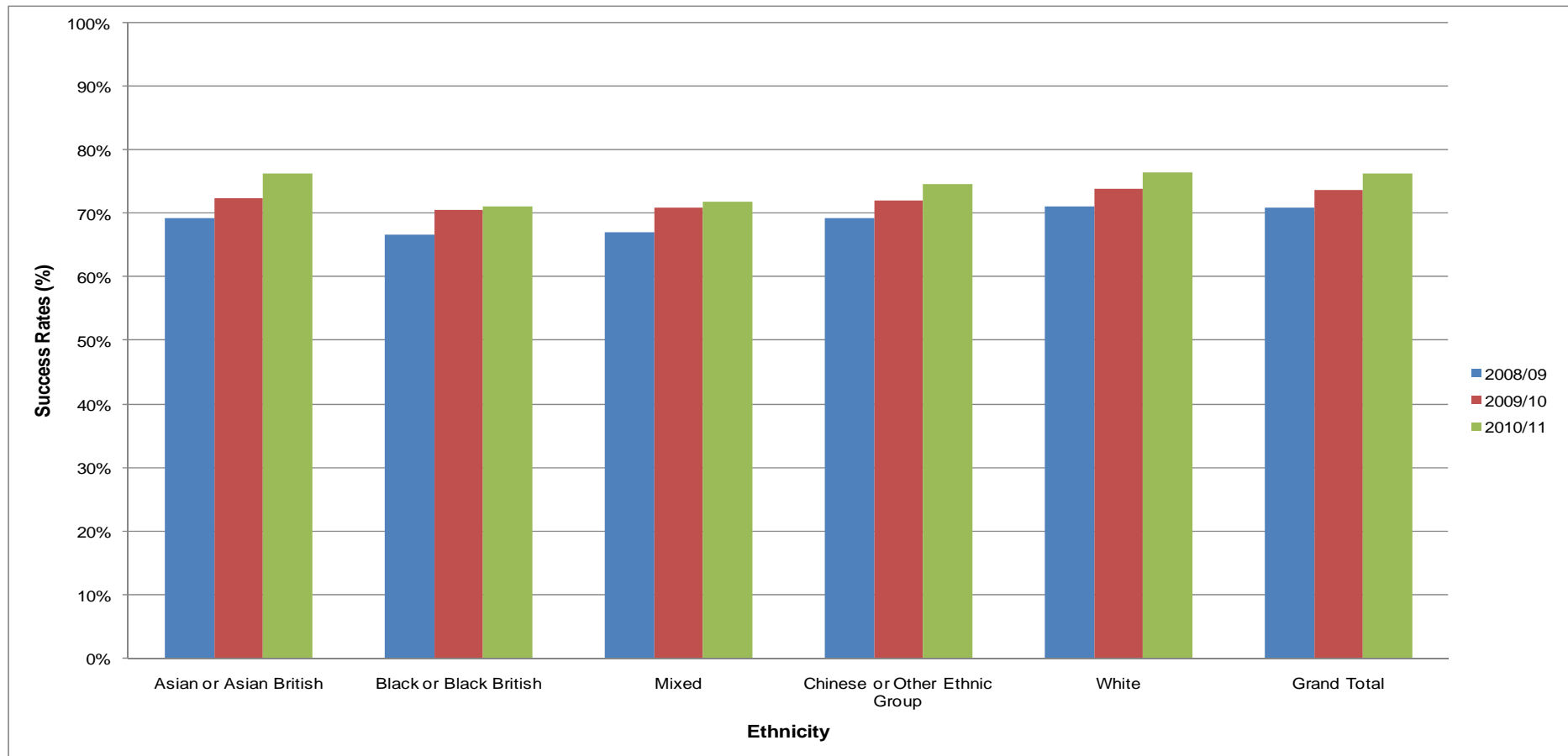


Success Rates

Success Rates by Ethnicity

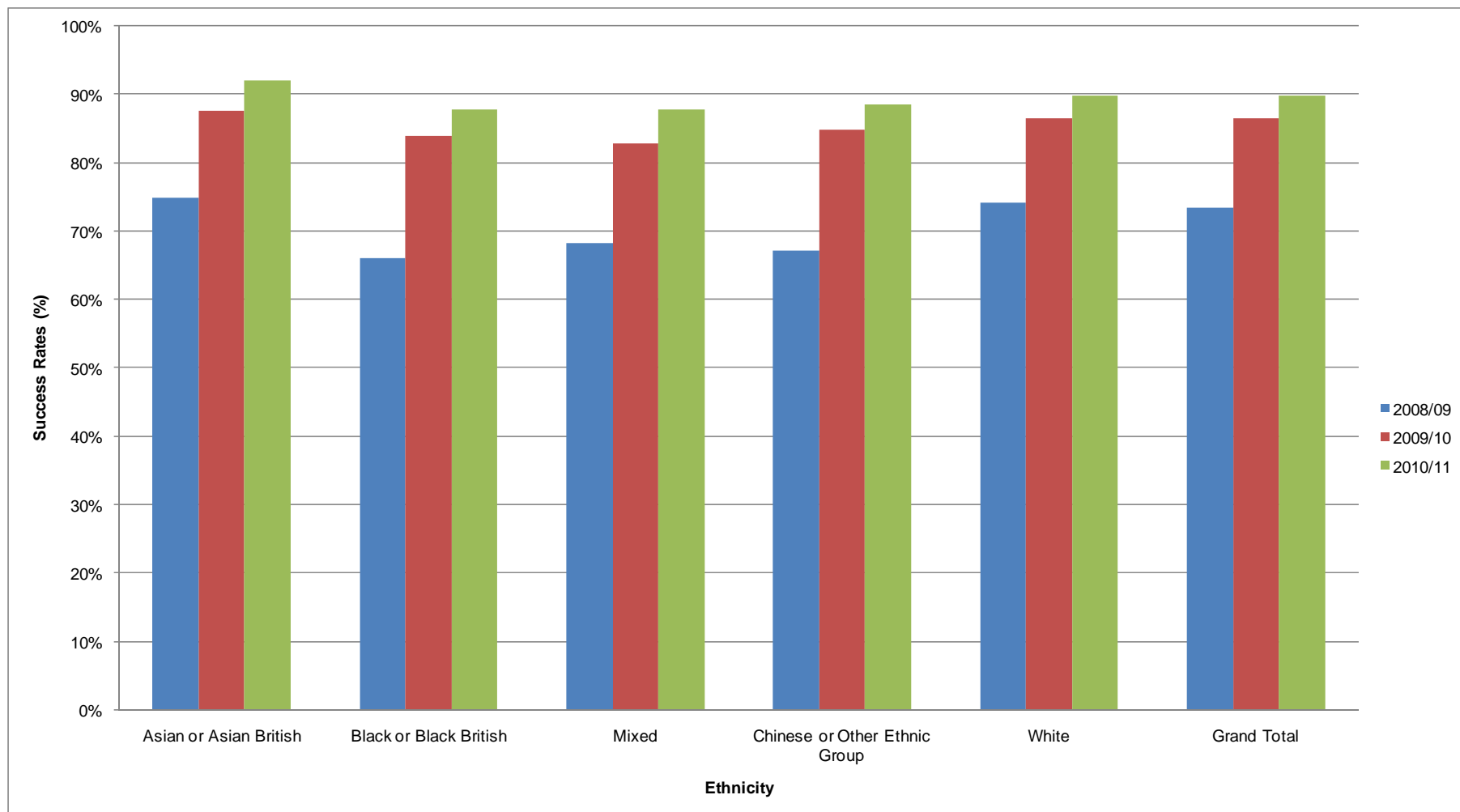
59 In 2010/11, Apprenticeship success rates were higher for all ethnic groups than in either of the previous two years. Success rates ranged from 71.1 per cent for Black or Black British learners to 76.6 per cent for White learners, a gap of 5.5 percentage points. This is a wider gap than the equivalent 3.4 percentage point gap in 2009/10 [Chart 9A].

Chart 9A: All Age Apprenticeship Success Rates by Ethnicity (2008/09 to 2010/11)



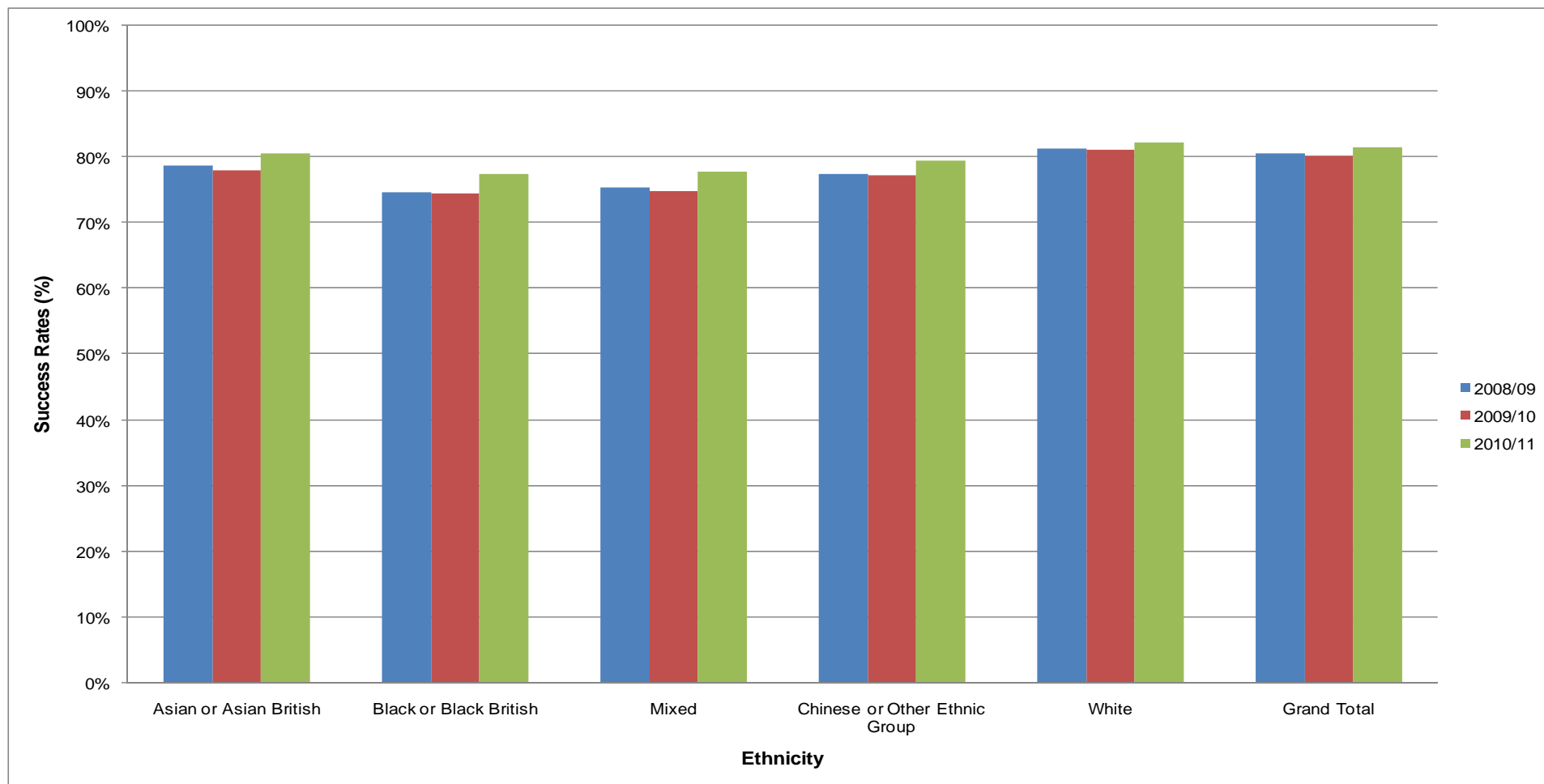
60 In Train to Gain provision, success rates increased among all ethnic groups between 2008/09 and 2010/11. In 2010/11, they ranged from 87.8 per cent for Black or Black British learners to 92.1 per cent for Asian or Asian British learners, a gap of 4.3 percentage points. This gap is narrower than the equivalent gap in 2008/09 (8.8 percentage points) but wider than the equivalent gap in 2009/10 (3.8 percentage points) [Chart 9B].

Chart 9B: Adult (19+) Train to Gain Success Rates by Ethnicity (2008/09 to 2010/11)



61 Education and Training success rates rose across all ethnic groups between 2008/09 and 2010/11. In 2010/11, they ranged from 77.4 per cent for Black or Black British learners to 82.4 per cent for White learners, a gap of 5.0 percentage points. This is a narrower gap than the equivalent gap of 7.1 percentage points in 2008/09 (Chart 9C).

Chart 9C: Adult (19+) Education and Training Success Rates by Ethnicity (2008/09 to 2010/11)



Success Rates by Gender

- 62 When all age groups are combined, success rates rose for both female and male apprentices between 2008/09 and 2010/11. In 2010/11, Females had a success rate of 77.2 per cent, 1.5 percentage points higher than males.
- 63 Between 2008/09 and 2010/11, Apprenticeship success rates rose for all age and gender groups, with the exception of 25+ males, whose success rate was 77.9 per cent in 2008/09, fell to 73.8 per cent in 2009/10 and rose back to 77.9 per cent in 2010/11 [Table 10A].

Table 10A: Apprenticeship Success Rates by Age and Gender (2008/09 to 2010/11) - Percentages

Gender	2008/09				2009/10				2010/11			
	Under 19	19-24	25+	All Age	Under 19	19-24	25+	All Age	Under 19	19-24	25+	All Age
Female	70.1%	70.4%	74.7%	70.8%	72.8%	74.5%	75.7%	74.1%	75.1%	77.8%	79.4%	77.2%
Male	69.2%	72.3%	77.9%	71.0%	72.1%	75.4%	73.8%	73.5%	73.2%	77.9%	77.9%	75.7%
Grand Total	69.6%	71.3%	75.9%	70.9%	72.4%	74.9%	75.1%	73.8%	74.0%	77.8%	78.8%	76.4%

- 64 In Train to Gain provision, success rates rose for both female and male learners between 2008/09 and 2010/11. In 2010/11, males had a success rate of 90.9 per cent, which was 2.1 percentage points higher than that of females. This gap is narrower than the equivalent gap of 4.5 percentage points in 2008/09, but wider than the equivalent gap of 1.6 percentage points in 2009/10 [Table 10B].

Table 10B: Adult (19+) Train to Gain Success Rates by Gender (2008/09 to 2010/11) - Percentages

Gender	2008/09	2009/10	2010/11
Female	71.0%	85.6%	88.8%
Male	75.5%	87.3%	90.9%
Grand Total	73.4%	86.5%	89.9%

65 In Education and Training provision, success rates increased for both females and males between 2008/09 and 2010/11, although with a slight dip in 2009/10. In 2010/11, females had a success rate of 81.9 per cent, which was 1.2 percentage points higher than that for males [Table 10C].

Table 10C: Adult (19+) Education and Training Success Rates by Gender (2008/09 to 2010/11) - Percentages

Gender	2008/09	2009/10	2010/11
Female	80.9%	80.7%	81.9%
Male	80.2%	79.4%	80.7%
Grand Total	80.6%	80.3%	81.4%

Success Rates by Learning Difficulties and/or Disabilities

66 In Apprenticeships, success rates for learners with learning difficulties and/or disabilities (LDD) increased from 66.5 per cent in 2008/09 to 72.6 per cent in 2010/11. In 2010/11, this success rate was 4.3 percentage points lower than that for apprentices who did not have an LDD. This gap was narrower than the equivalent 5.0 percentage point gap in 2008/09 [Table 11A.1].

Table 11A.1: Apprenticeship Success Rates by Age and Learning Difficulties and/or Disabilities (2008/09 to 2010/11) - Percentages

Learning Difficulties and/or Disabilities	2008/09				2009/10				2010/11			
	Under 19	19-24	25+	All Age	Under 19	19-24	25+	All Age	Under 19	19-24	25+	All Age
Learning Difficulty/Disability	63.4%	68.9%	73.0%	66.5%	67.1%	71.1%	75.0%	69.9%	70.3%	74.1%	76.3%	72.6%
No Learning Difficulty/Disability	70.4%	71.6%	76.3%	71.4%	73.1%	75.4%	75.1%	74.3%	74.6%	78.2%	79.0%	76.8%
Not Known	66.2%	70.9%	75.6%	68.6%	68.9%	69.4%	73.3%	69.9%	67.3%	71.6%	86.1%	73.5%
Grand Total	69.6%	71.3%	75.9%	70.9%	72.4%	74.9%	75.1%	73.8%	74.0%	77.8%	78.8%	76.4%

67 In 2010/11, Apprenticeship success rates by disability impairment type ranged from 67.8 per cent for apprentices with emotional/behavioural difficulties, to 77.0 per cent for those with visual impairments [Table 11A.2].

Table 11A.2: Apprenticeship Success Rates by Age and Disability (2008/09 to 2010/11) - Percentages

Disability	2008/09				2009/10				2010/11			
	Under 19	19-24	25+	All Ages	Under 19	19-24	25+	All Ages	Under 19	19-24	25+	All Ages
Visual Impairment	67.5%	74.4%	71.4%	71.3%	77.5%	78.3%	80.2%	79.1%	74.1%	74.5%	80.9%	77.0%
Hearing Impairment	58.5%	62.6%	75.0%	62.1%	67.1%	69.3%	77.4%	70.5%	68.8%	77.5%	77.1%	74.3%
Disability Affecting Mobility	73.0%	73.3%	80.9%	75.0%	72.9%	64.5%	83.0%	75.0%	67.1%	77.5%	76.8%	74.4%
Other Physical Disability	59.6%	66.0%	81.3%	65.5%	66.1%	74.1%	70.0%	70.1%	76.7%	81.3%	72.0%	76.9%
Other Medical Condition (For Example Epilepsy, Asthma, Diabetes)	66.6%	70.3%	76.2%	68.9%	69.6%	75.5%	74.3%	72.4%	74.8%	78.1%	78.3%	76.4%
Emotional/Behavioural Difficulties	48.0%	58.7%	-	51.0%	63.6%	66.2%	75.6%	65.8%	64.6%	74.6%	77.4%	67.8%
Mental Health Difficulty	54.0%	68.2%	70.0%	64.9%	59.3%	63.4%	71.8%	66.7%	64.4%	69.7%	74.2%	69.6%
Temporary Disability After Illness (For Example Post-Viral) or Accident	-	-	-	58.7%	-	-	-	76.2%	76.5%	-	-	70.6%
Profound Complex Disabilities	-	-	-	-	-	-	-	-	-	-	-	-
Asperger's Syndrome	-	-	-	-	68.0%	-	-	71.6%	71.4%	68.5%	-	70.4%
Multiple Disabilities	63.9%	80.1%	76.0%	75.7%	67.7%	76.6%	73.7%	73.3%	70.5%	78.4%	78.6%	76.2%
Other	62.3%	67.6%	75.9%	65.6%	67.7%	72.8%	74.5%	70.5%	70.3%	71.7%	74.7%	71.6%
No Disability	69.9%	71.4%	76.1%	71.1%	72.6%	75.0%	74.9%	73.9%	74.2%	78.0%	78.8%	76.5%
Not Known	66.0%	70.9%	73.1%	68.8%	68.9%	71.5%	75.6%	71.2%	69.7%	73.7%	84.5%	74.3%
Grand Total	69.6%	71.3%	75.9%	70.9%	72.4%	74.9%	75.1%	73.8%	74.0%	77.8%	78.8%	76.4%

- 68 In 2010/11, Apprenticeship success rates by learning difficulty ranged from 59.6 per cent for apprentices with multiple learning difficulties, to 73.5 per cent for learners with dyscalculia.
- 69 Between 2008/09 and 2010/11, when all age groups are combined, Apprenticeship success rates rose across all learning difficulties except multiple learning difficulties, among whom the success rate fell from 65.3 per cent to 59.6 per cent [Table 11A.3].

Table 11A.3: Apprenticeship Success Rates by Age and Learning Difficulty (2008/09 to 2010/11) - Percentages

Learning Difficulty	2008/09				2009/10				2010/11			
	Under 19	19-24	25+	All Ages	Under 19	19-24	25+	All Ages	Under 19	19-24	25+	All Ages
Moderate Learning Difficulty	58.7%	65.3%	71.4%	61.4%	61.6%	66.9%	68.6%	63.7%	65.0%	68.6%	70.8%	66.4%
Severe Learning Difficulty	59.3%	-	-	63.5%	55.8%	78.1%	-	64.2%	65.8%	-	-	63.7%
Dyslexia	66.5%	67.6%	71.1%	67.2%	70.2%	69.7%	71.5%	70.1%	71.9%	73.4%	72.6%	72.6%
Dyscalculia	67.9%	71.8%	-	69.9%	70.4%	66.2%	71.9%	69.0%	75.0%	76.5%	63.6%	73.5%
Other Specific Learning Difficulty	62.5%	65.7%	-	63.5%	62.9%	70.4%	-	67.6%	62.4%	67.7%	-	67.2%
Autism Spectrum Disorder	-	-	-	-	-	-	-	-	62.5%	-	-	71.0%
Multiple Learning Difficulties	62.6%	69.1%	61.1%	65.3%	60.8%	58.5%	67.2%	60.7%	57.5%	58.3%	77.4%	59.6%
Other	61.5%	62.5%	64.0%	62.2%	64.7%	69.5%	75.2%	68.2%	66.8%	76.2%	68.2%	70.1%
No Learning Difficulty	70.2%	71.6%	76.2%	71.4%	73.0%	75.4%	75.2%	74.3%	74.5%	78.2%	78.9%	76.8%
Not Known	66.4%	71.3%	72.2%	68.8%	70.6%	71.1%	75.9%	71.9%	69.6%	73.4%	85.9%	75.0%
Grand Total	69.6%	71.3%	75.9%	70.9%	72.4%	74.9%	75.1%	73.8%	74.0%	77.8%	78.8%	76.4%

- 70 In 2010/11, Train to Gain learners who declared an LDD had a success rate of 88.0 per cent, 2.0 percentage points lower than for learners who did not declare an LDD. This gap is narrower than the equivalent 4.2 percentage point gap in 2008/09 [Table 11B.1].

Table 11B.1: Adult (19+) Train to Gain Success Rates by Learning Difficulties and/or Disabilities (2008/09 to 2010/11) - Percentages

Learning Difficulties and/or Disabilities	2008/09	2009/10	2010/11
Learning Difficulty/Disability	69.4%	85.5%	88.0%
No Learning Difficulty/Disability	73.6%	86.6%	90.0%
Not Known	72.4%	85.7%	88.3%
Grand Total	73.4%	86.5%	89.9%

71 In Education and Training provision in 2010/11, learners who declared an LDD had a success rate of 81.8 per cent, 0.2 percentage points higher than learners who did not declare an LDD [Table 11C.1].

Table 11C.1: Adult (19+) Education and Training Success Rates by Learning Difficulties and/or Disabilities (2008/09 to 2010/11) - Percentages

Learning Difficulties and/or Disabilities	2008/09	2009/10	2010/11
Learning Difficulty/Disability	80.7%	80.4%	81.8%
No Learning Difficulty/Disability	80.6%	80.3%	81.6%
Not Known	80.5%	79.9%	78.7%
Grand Total	80.6%	80.3%	81.4%

72 In Education and Training provision in 2010/11, the success rate by disability ranged from 79.3 for learners with temporary disability after illness, to 89.3 per cent for learners with profound and complex disabilities. Those with no disability had a success rate of 81.5 per cent [Table 11C.2].

Table 11C.2: Adult (19+) Education and Training Success Rates by Disability (2008/09 to 2010/11) - Percentages

Disability	2008/09	2009/10	2010/11
Visual Impairment	82.2%	82.3%	82.3%
Hearing Impairment	83.5%	82.6%	82.5%
Disability Affecting Mobility	82.9%	82.4%	83.5%
Other Physical Disability	81.3%	81.2%	82.3%
Other Medical Condition (For Example Epilepsy, Asthma, Diabetes)	80.1%	80.3%	81.9%
Emotional/Behavioural Difficulties	83.6%	81.8%	83.8%
Mental Health Difficulty	78.4%	77.9%	79.6%
Temporary Disability After Illness (For Example Post-Viral) or Accident	76.5%	78.3%	79.3%
Profound Complex Disabilities	88.8%	91.3%	89.3%
Asperger's Syndrome	84.2%	82.1%	84.6%
Multiple Disabilities	83.8%	84.0%	86.0%
Other	80.7%	80.0%	81.6%
No Disability	80.5%	80.2%	81.5%
Not Known	80.7%	80.1%	79.4%
Grand Total	80.6%	80.3%	81.4%

73 In Education and Training provision in 2010/11, the success rate by learning difficulty ranged from 77.5 per cent for dyslexic learners, to 91.6 per cent for learners with a severe learning difficulty. Learners who did not declare any learning difficulties had a success rate of 81.4 per cent [Table 11C.3].

Table 11C.3: Adult (19+) Education and Training Success Rates by Learning Difficulty (2008/09 to 2010/11) - Percentages

Learning Difficulty	2008/09	2009/10	2010/11
Moderate Learning Difficulty	85.0%	84.3%	85.9%
Severe Learning Difficulty	89.5%	90.4%	91.6%
Dyslexia	75.8%	75.4%	77.5%
Dyscalculia	79.0%	79.2%	77.6%
Other Specific Learning Difficulty	82.9%	81.4%	82.7%
Autism Spectrum Disorder	88.0%	85.4%	87.9%
Multiple Learning Difficulties	85.0%	84.3%	87.0%
Other	78.2%	77.7%	80.0%
No Learning Difficulty	80.5%	80.1%	81.4%
Not Known	81.5%	81.0%	80.2%
Grand Total	80.6%	80.3%	81.4%

Success Rates by Age

74 In Apprenticeships between 2008/09 and 2010/11, learners over 25 consistently had higher success rates than learners under 19. In 2010/11, 25+ apprentices had a success rate of 78.8 per cent, 4.8 percentage points higher than apprentices under 19. This is narrower than the equivalent gap of 6.3 percentage points in 2008/09.

Table 12A: Apprenticeship Success Rates by Age (2008/09 to 2010/11) - Percentages

Gender	2008/09	2009/10	2010/11
Under 19	69.6%	72.4%	74.0%
19-24	71.3%	74.9%	77.8%
25+	75.9%	75.1%	78.8%
Grand Total	70.9%	73.8%	76.4%

75 In Train to Gain provision between 2008/09 and 2010/11, success rates were consistently highest for 45-59 year old learners, and lowest for 19-24 year old learners. In 2010/11, 45-59 year old learners had a success rate of 91.4 per cent, 4.8 percentage points higher than the success rate for 19-24 year old learners (86.6 per cent) [Table 12B].

Table 12B: Adult (19+) Train to Gain Success Rates by Age (2008/09 to 2010/11) - Percentages

Age	2008/09	2009/10	2010/11
19-24	70.5%	82.5%	86.6%
25-34	72.5%	85.6%	89.2%
35-44	74.6%	87.4%	90.7%
45-59	75.2%	88.3%	91.4%
60+	74.5%	88.0%	91.1%
Not Known	60.1%	-	-
Grand Total	73.4%	86.5%	89.9%

76 In Education and Training provision between 2008/09 and 2010/11, success rates were consistently highest for learners aged 60+, and lowest for learners aged 19-24. In 2010/11, 60+ learners had a success rate of 88.9 per cent, and learners aged 19-24 had a success rate of 79.0 percent, a gap of 9.9 percentage points. This gap is narrower than the equivalent gap of 11.2 percentage points in 2008/09 [Table 12C].

Table 12C: Adult (19+) Education and Training Success Rates by Age (2008/09 to 2010/11) - Percentages

Age	2008/09	2009/10	2010/11
19-24	76.9%	76.5%	79.0%
25-34	79.5%	79.2%	80.9%
35-44	81.1%	80.7%	81.9%
45-59	82.3%	82.0%	82.8%
60+	88.1%	88.8%	88.9%
Not Known	84.7%	87.6%	83.8%
Grand Total	80.6%	80.3%	81.4%

Success Rates by Ethnicity and Gender

77 In Apprenticeships in 2010/11:

- Female Asian or Asian British apprentices had a success rate of 76.9 per cent, 1.1 percentage points higher than male Asian or Asian British apprentices (75.7 per cent). This gap is narrower than the equivalent gap of 4.1 percentage points in 2008/09.
- Female Black or Black apprentices had a success rate of 70.6 per cent, 1.0 percentage points lower than male Black or Black British apprentices (71.5 per cent). This gap is narrower than the equivalent gap of 3.7 percentage points in 2008/09.
- Female apprentices of Mixed ethnicity had a success rate 2.3 percentage points lower than male Mixed apprentices.
- Female White apprentices had a success rate 1.5 percentage points higher than male White apprentices.
- Female Chinese or Other Ethnic Group learners had a success rate 4.1 percentage points higher than male Chinese or Other Ethnic Group learners [Table 13A].

Table 13A (extract)¹⁸: Apprenticeship Success Rates by Ethnicity and Gender (2008/09 to 2010/11) - Percentages

Ethnicity	2008/09			2009/10			2010/11		
	Female	Male	All	Female	Male	All	Female	Male	All
Asian or Asian British	71.4%	67.2%	69.4%	73.5%	71.1%	72.4%	76.9%	75.7%	76.3%
Black or Black British	64.9%	68.6%	66.8%	68.1%	72.7%	70.6%	70.6%	71.5%	71.1%
Mixed	66.1%	68.1%	67.1%	67.8%	73.9%	70.9%	70.7%	73.0%	71.9%
White	71.0%	71.2%	71.1%	74.4%	73.7%	74.0%	77.4%	75.9%	76.6%
Chinese or Other Ethnic Group	69.1%	69.7%	69.4%	72.8%	71.2%	72.0%	76.7%	72.5%	74.6%
Not Known	71.5%	68.3%	69.8%	72.7%	70.7%	71.7%	80.5%	76.0%	78.5%
Grand Total	70.8%	71.0%	70.9%	74.1%	73.5%	73.8%	77.2%	75.7%	76.4%

¹⁸ A full version of Table 13A, including breakdowns by age, is available in the spreadsheet accompanying this report.

78 In Train to Gain provision between 2008/09 and 2010/11, females had lower success rates than their male counterparts across all ethnic groups. In 2010/11, this gap was widest among Asian or Asian British learners, where females had a success rate 5.2 percentage points lower than males [Table 13B].

Table 13B: Adult (19+) Train to Gain Success Rates by Ethnicity and Gender (2008/09 to 2010/11) - Percentages

Ethnicity	2008/09			2009/10			2010/11		
	Female	Male	All	Female	Male	All	Female	Male	All
Asian or Asian British	70.9%	77.1%	74.9%	85.2%	89.1%	87.7%	88.5%	93.8%	92.1%
Black or Black British	64.7%	67.9%	66.1%	83.1%	84.7%	83.9%	86.8%	88.9%	87.8%
Mixed	66.1%	70.8%	68.3%	82.5%	83.4%	82.9%	87.0%	88.8%	87.9%
White	72.0%	76.0%	74.1%	85.9%	87.4%	86.6%	88.9%	90.7%	89.9%
Chinese or Other Ethnic Group	66.0%	68.6%	67.2%	84.4%	85.4%	84.9%	88.1%	88.9%	88.5%
Not Known	62.6%	72.1%	67.6%	83.4%	85.0%	84.2%	89.1%	91.0%	90.1%
Grand Total	71.0%	75.5%	73.4%	85.6%	87.3%	86.5%	88.8%	90.9%	89.9%

79 In Education and Training provision between 2008/09 and 2010/11, females consistently had higher success rates than their male counterparts across all ethnic groups. In 2010/11, this gap was widest among Asian or Asian British learners, where females had a success rate 4.0 percentage points higher than males [Table 13C].

Table 13C: Adult (19+) Education and Training Success Rates by Ethnicity and Gender (2008/09 to 2010/11) - Percentages

Ethnicity	2008/09			2009/10			2010/11		
	Female	Male	All	Female	Male	All	Female	Male	All
Asian or Asian British	79.9%	76.0%	78.7%	79.4%	75.3%	78.1%	82.0%	78.0%	80.6%
Black or Black British	74.9%	74.0%	74.6%	75.2%	73.3%	74.5%	77.8%	76.7%	77.4%
Mixed	75.8%	74.9%	75.5%	75.3%	74.4%	74.9%	78.0%	77.8%	77.9%
White	81.8%	81.6%	81.7%	81.8%	81.0%	81.5%	82.7%	81.9%	82.4%
Chinese or Other Ethnic Group	78.6%	75.4%	77.5%	78.6%	74.7%	77.3%	80.6%	77.2%	79.4%
Not Known	81.4%	81.5%	81.4%	81.9%	80.2%	81.2%	82.8%	81.4%	82.2%
Grand Total	80.9%	80.2%	80.6%	80.7%	79.4%	80.3%	81.9%	80.7%	81.4%

Success Rates by Ethnicity and Learning Difficulties and/or Disabilities

80 In Apprenticeships in 2010/11, apprentices declaring LDD had lower success rates than their non-LDD counterparts across all ethnic groups. This gap was widest among Chinese or Other Ethnic Group learners, among whom apprentices declaring an LDD had a success rate 13.6 percentage points lower than those who did not. Among Black or Black British apprentices, those declaring an LDD had a success rate 6.9 percentage points lower than those who did not [Table 14A].

Table 14A (Extract): Apprenticeship Success Rates by Ethnicity and Learning Difficulties and/or Disabilities (2008/09 to 2010/11) – Percentages

Ethnicity	2008/09				2009/10				2010/11			
	Learning Difficulty / Disability	No Learning Difficulty / Disability	Not Known	All	Learning Difficulty / Disability	No Learning Difficulty / Disability	Not Known	All	Learning Difficulty / Disability	No Learning Difficulty / Disability	Not Known	All
Asian or Asian British	71.0%	69.2%	71.9%	69.4%	71.8%	71.0%	65.1%	72.4%	72.4%	76.7%	63.5%	76.3%
Black or Black British	66.5%	66.9%	68.8%	66.8%	67.6%	71.6%	60.5%	70.6%	64.9%	71.8%	52.1%	71.1%
Mixed	62.2%	67.9%	-	67.1%	66.2%	71.6%	-	70.9%	69.5%	72.3%	-	71.9%
White	66.5%	71.7%	68.7%	71.1%	70.0%	74.5%	69.4%	74.0%	72.9%	77.1%	69.9%	76.6%
Chinese or Other Ethnic Group	62.4%	70.0%	-	69.4%	61.8%	73.1%	-	72.0%	62.1%	75.7%	-	74.6%
Not Known	63.2%	70.5%	69.6%	69.8%	72.7%	70.7%	82.5%	71.7%	72.5%	75.9%	90.7%	78.5%
Grand Total	66.5%	71.4%	68.6%	70.9%	69.9%	74.3%	69.9%	73.8%	72.6%	76.8%	73.5%	76.4%

81 In Adult Train to Gain provision in 2010/11, across all ethnic groups learners who declared an LDD had lower success rates than those who did not. The gap was widest among Black or Black British learners, among whom those who declared an LDD had a success rate 4.4 percentage points lower than those who did not.

Table 14B: Adult (19+) Train to Gain Success Rates by Ethnicity and Learning Difficulties and/or Disabilities (2008/09 to 2010/11) - Percentages

Ethnicity	2008/09				2009/10				2010/11			
	Learning Difficulty / Disability	No Learning Difficulty / Disability	Not Known	All	Learning Difficulty / Disability	No Learning Difficulty / Disability	Not Known	All	Learning Difficulty / Disability	No Learning Difficulty / Disability	Not Known	All
	Asian or Asian British	67.3%	75.2%	72.4%	74.9%	85.4%	87.9%	84.3%	87.7%	89.8%	92.2%	88.5%
Black or Black British	63.4%	66.9%	50.1%	66.1%	82.1%	84.0%	83.3%	83.9%	83.6%	88.0%	88.3%	87.8%
Mixed	61.4%	68.8%	68.7%	68.3%	81.0%	83.0%	83.5%	82.9%	84.0%	88.2%	83.0%	87.9%
White	70.3%	74.2%	76.1%	74.1%	85.7%	86.7%	86.1%	86.6%	88.1%	90.0%	87.7%	89.9%
Chinese or Other Ethnic Group	55.2%	67.4%	74.6%	67.2%	84.5%	84.9%	83.3%	84.9%	86.7%	88.6%	88.9%	88.5%
Not Known	60.3%	70.4%	56.9%	67.6%	82.4%	84.1%	85.5%	84.2%	88.0%	89.7%	93.0%	90.1%
Grand Total	69.4%	73.6%	72.4%	73.4%	85.5%	86.6%	85.7%	86.5%	88.0%	90.0%	88.3%	89.9%

82 In Adult Education and Training provision in 2010/2011, across most ethnic groups, there was less than 1.0 percentage point difference between the success rate of learners who declared an LDD and those who did not. The gap was widest among Asian or Asian British learners: those who declared an LDD had a success rate 1.4 percentage points higher than those who did not.

Table 14C: Adult (19+) Education and Training Success Rates by Ethnicity and Learning Difficulties and/or Disabilities (2008/09 to 2009/10) - Percentages

Ethnicity	2008/09				2009/10				2010/11			
	Learning Difficulty / Disability	No Learning Difficulty / Disability	Not Known	All	Learning Difficulty/ Disability	No Learning Difficulty/ Disability	Not Known	All	Learning Difficulty/ Disability	No Learning Difficulty/ Disability	Not Known	All
	Asian or Asian British	79.7%	78.5%	78.5%	78.7%	79.5%	78.1%	74.7%	78.1%	82.1%	80.7%	76.9%
Black or Black British	75.2%	74.7%	72.0%	74.6%	74.7%	74.8%	70.6%	74.5%	76.9%	77.9%	73.0%	77.4%
Mixed	75.4%	75.6%	73.6%	75.5%	74.8%	75.1%	73.0%	74.9%	78.3%	78.0%	74.9%	77.9%
White	81.5%	81.8%	82.1%	81.7%	81.1%	81.5%	82.2%	81.5%	82.4%	82.6%	79.6%	82.4%
Chinese or Other Ethnic Group	75.2%	77.9%	75.9%	77.5%	77.0%	77.6%	73.1%	77.3%	79.4%	79.6%	77.5%	79.4%
Not Known	82.4%	81.3%	81.4%	81.4%	82.8%	80.5%	82.3%	81.2%	82.2%	81.4%	84.3%	82.2%
Grand Total	80.7%	80.6%	80.5%	80.6%	80.4%	80.3%	79.9%	80.3%	81.8%	81.6%	78.7%	81.4%

Success Rates by Gender and Learning Difficulties and/or Disabilities

83 In Apprenticeships in 2010/11, female apprentices who declared an LDD had a success rate that was:

- 1.1 percentage point higher than male apprentices who declared an LDD
- 4.5 percentage points lower than female apprentices who did not declare an LDD
- 3.0 percentage points lower than male apprentices who did not declare an LDD [Table 15A].

Table 15A: Apprenticeship Success Rates by Age and Learning Difficulties and/or Disabilities and Gender (2008/09 to 2010/11) - Percentages

Learning Difficulties and/or Disabilities	2008/09			2009/10			2010/11		
	Female	Male	All	Female	Male	All	Female	Male	All
Learning Difficulty/Disability	67.8%	64.9%	66.5%	70.2%	69.5%	69.9%	73.1%	72.0%	72.6%
No Learning Difficulty/Disability	71.2%	71.6%	71.4%	74.7%	74.0%	74.3%	77.6%	76.1%	76.8%
Not Known	70.0%	67.8%	68.6%	70.5%	69.4%	69.9%	77.3%	69.8%	73.5%
Grand Total	70.8%	71.0%	70.9%	74.1%	73.5%	73.8%	77.2%	75.7%	76.4%

84 In Train to Gain provision in 2010/11, female learners who declared an LDD had a success rate that was:

- 1.6 percentage points lower than male learners who declared an LDD
- 1.8 percentage points lower than female learners who did not declare an LDD, and
- 3.9 percentage points lower than male learners who did not declare an LDD [Table 15B].

Table 15B: Adult (19+) Train to Gain Success Rates by Learning Difficulties and/or Disabilities and Gender (2008/09 to 2010/11) - Percentages

Learning Difficulties and/or Disabilities	2008/09			2009/10			2010/11		
	Female	Male	All	Female	Male	All	Female	Male	All
Learning Difficulty/Disability	67.8%	71.4%	69.4%	84.3%	86.6%	85.5%	87.1%	88.7%	88.0%
No Learning Difficulty/Disability	71.3%	75.7%	73.6%	85.7%	87.3%	86.6%	88.9%	91.0%	90.0%
Not Known	69.6%	74.0%	72.4%	84.8%	86.6%	85.7%	87.7%	89.1%	88.3%
Grand Total	71.0%	75.5%	73.4%	85.6%	87.3%	86.5%	88.8%	90.9%	89.9%

85 In Adult Education and Training, female learners who declared an LDD had a success rate that was:

- 0.1 percentage point lower than male learners who declared an LDD
- 0.4 percentage points lower than female learners who did not declare an LDD, and
- 1.1 percentage points higher than male learners who did not declare an LDD [Table 15C].

Table 15C: Adult (19+) Education and Training Success Rates by Learning Difficulties and/or Disabilities and Gender (2008/09 to 2010/11) - Percentages

Learning Difficulties and/or Disabilities	2008/09			2009/10			2010/11		
	Female	Male	All	Female	Male	All	Female	Male	All
Learning Difficulty/Disability	80.5%	81.1%	80.7%	80.4%	80.4%	80.4%	81.8%	81.9%	81.8%
No Learning Difficulty/Disability	81.0%	80.0%	80.6%	80.8%	79.2%	80.3%	82.2%	80.6%	81.6%
Not Known	80.4%	80.7%	80.5%	80.2%	79.3%	79.9%	78.9%	78.3%	78.7%
Grand Total	80.9%	80.2%	80.6%	80.7%	79.4%	80.3%	81.9%	80.7%	81.4%

Support

Should you have any questions about the data analysis please contact the Data Service Service Desk on servicedesk@thedataservice.org.uk or telephone 0870 2670001.

Should you have any queries on the Skills Funding Agency's equality activities, please contact equality@skillfundingagency.bis.gov.uk.

Date Published	2 May 2012
Publication no.	SkillsFundingAgency-P-120111
Version	2