

2015

Inflammation and oxidative stress : The molecular connectivity between insulin resistance, obesity and Alzheimer's disease

Giuseppe Verdile
Edith Cowan University, g.verdile@ecu.edu.au

Kevin N. Keane

Vinicius F. Cruzat

Sandra Medic

Miheer Sabale

See next page for additional authors

Follow this and additional works at: <https://ro.ecu.edu.au/ecuworkspost2013>



Part of the [Neurology Commons](#), and the [Neurosciences Commons](#)

[10.1155/2015/105828](https://ro.ecu.edu.au/ecuworkspost2013/105828)

Verdile, G., Keane, K. N., Cruzat, V. F., Medic, S., Sabale, M., Rowles, J., ... Newsholme, P. (2015). Inflammation and oxidative stress : The molecular connectivity between insulin resistance, obesity and Alzheimer's disease.

Mediators of Inflammation, 6. doi: 10.1155/2015/105828. Available [here](#)

This Journal Article is posted at Research Online.

<https://ro.ecu.edu.au/ecuworkspost2013/1655>

Authors

Giuseppe Verdile, Kevin N. Keane, Vinicius F. Cruzat, Sandra Medic, Miheer Sabale, Joanne Rowles, Nadeeja Wijesekara, Ralph Martins, Paul E. Fraser, and Philip Newsholme

Review Article

Inflammation and Oxidative Stress: The Molecular Connectivity between Insulin Resistance, Obesity, and Alzheimer's Disease

Giuseppe Verdile,^{1,2} Kevin N. Keane,¹ Vinicius F. Cruzat,^{1,3} Sandra Medic,¹ Miheer Sabale,¹ Joanne Rowles,¹ Nadeeja Wijesekara,⁴ Ralph N. Martins,² Paul E. Fraser,⁴ and Philip Newsholme¹

¹*School of Biomedical Sciences, Curtin Health Innovation Research Institute, Biosciences, Curtin University, Kent Street, Bentley, Perth, WA 6102, Australia*

²*Centre of Excellence for Alzheimer's Disease Research and Care, School of Medical Sciences, Edith Cowan University, 270 Joondalup Drive, Joondalup, Perth, WA 6027, Australia*

³*Department of Physiology and Biophysics, Institute of Biomedical Sciences (ICB-I), University of São Paulo (USP), Avenida Prof. Lineu Prestes 1524, Butantã, 05508-000 São Paulo, SP, Brazil*

⁴*University of Toronto, Tanz Centre for Research in Neurodegenerative Diseases, Department of Medical Biophysics, Krembil Discovery Tower, 60 Leonard Avenue, Toronto, ON, Canada M5T 2S8*

Correspondence should be addressed to Giuseppe Verdile; giuseppe.verdile@curtin.edu.au and Vinicius F. Cruzat; vinifc@usp.br

Received 28 July 2015; Accepted 29 September 2015

Academic Editor: Antonio Macciò

Copyright © 2015 Giuseppe Verdile et al. This is an open access article distributed under the Creative Commons Attribution License, which permits unrestricted use, distribution, and reproduction in any medium, provided the original work is properly cited.

Type 2 diabetes (T2DM), Alzheimer's disease (AD), and insulin resistance are age-related conditions and increased prevalence is of public concern. Recent research has provided evidence that insulin resistance and impaired insulin signalling may be a contributory factor to the progression of diabetes, dementia, and other neurological disorders. Alzheimer's disease (AD) is the most common subtype of dementia. Reduced release (for T2DM) and decreased action of insulin are central to the development and progression of both T2DM and AD. A literature search was conducted to identify molecular commonalities between obesity, diabetes, and AD. Insulin resistance affects many tissues and organs, either through impaired insulin signalling or through aberrant changes in both glucose and lipid (cholesterol and triacylglycerol) metabolism and concentrations in the blood. Although epidemiological and biological evidence has highlighted an increased incidence of cognitive decline and AD in patients with T2DM, the common molecular basis of cell and tissue dysfunction is rapidly gaining recognition. As a cause or consequence, the chronic inflammatory response and oxidative stress associated with T2DM, amyloid- β ($A\beta$) protein accumulation, and mitochondrial dysfunction link T2DM and AD.

1. Introduction

In the last few decades changes in lifestyle, especially related to overnutrition, physical inactivity, and ageing have increased the global incidence of Type 2 diabetes (T2DM). According to the International Diabetes Federation (IDF), currently 387 million people have diabetes mellitus worldwide, and this number is expected to reach 592 million by 2035. T2DM is by far the most common form of diabetes, representing about 90–95% of DM cases. In older age people (>65 years), the prevalence of T2DM is 12–25%

and is characterized by cell and tissue insulin resistance, metabolic dysregulation, and chronic inflammation. These clinical abnormalities have also been described in dementia cases [1, 2]. Hoyer first suggested the concept of disturbances in glucose metabolism and insulin resistance as underlying causes of neurodegeneration and dementia [3, 4].

More recently, epidemiological studies have provided further evidence for this link where T2DM was shown to be associated with accelerated cognitive decline and increased risk of dementia (by 1.5- to 2-fold). Indeed 10% of worldwide cases of dementia maybe attributable to the metabolic

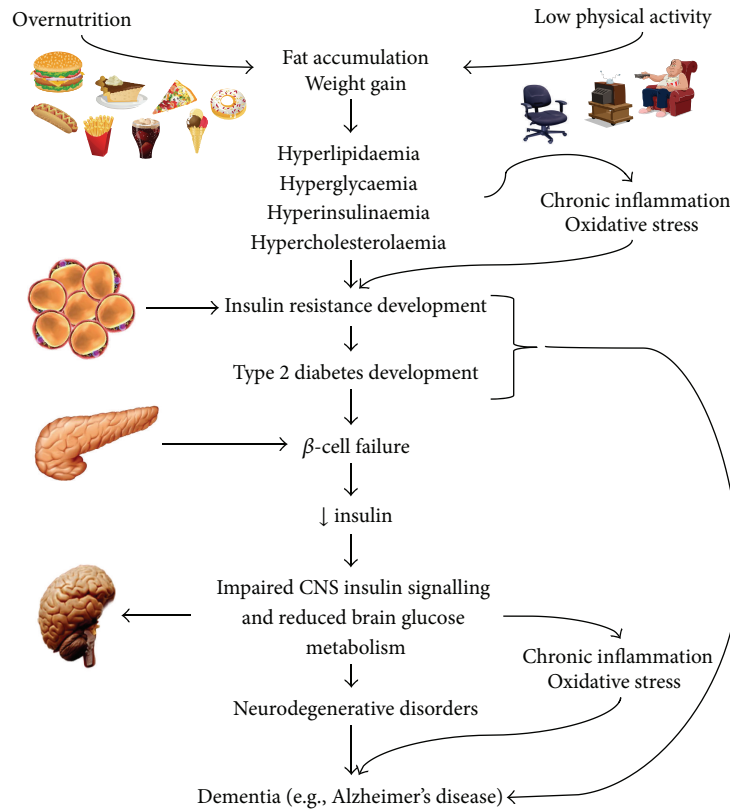


FIGURE 1: Neurodegeneration, insulin resistance, obesity, and T2DM. Metabolic overload, chronic inflammation, and oxidative stress promote cellular dysregulation in both T2DM and AD. Brain IR may occur in the absence of diabetes suggesting that AD may develop in the earlier stages of insulin resistance. Chronic inflammation and oxidative stress are considered two key factors linking diabetes and AD [2].

disturbances associated with T2DM [5]. Moreover, cross-sectional and longitudinal studies have indicated that global brain atrophy is strongly associated with T2DM and the rate of atrophy is greater than that seen in normal ageing [6, 7]. Very recently in the Framingham Heart study it was reported that diabetes, and in particular the resulting hyperglycaemia, was associated with reduced cognitive performance and reduced brain grey matter volume in young and middle-aged adults [8].

Strengthening the relationship between diabetes and reduced cognition, it can be postulated that metabolic changes associated with diabetes can potentially drive early neurodegenerative processes in dementia. The molecular underpinnings of this relationship are both complex and poorly understood. The purpose of this review is to examine the common and disparate metabolic, oxidative, and inflammatory processes with the aim of collating in one place current understanding linking T2DM with the most common cause of dementia, Alzheimer's disease (AD).

2. The Involvement of Chronic Inflammation in Insulin Resistance, Obesity and Diabetes

Obesity and related metabolic diseases are associated with chronic low-grade inflammation (Figure 1). In 1993, the relationship between obesity and T2DM was described

in vivo, when investigators demonstrated that adipose-derived tumour necrosis factor- α (TNF- α) levels in mice were increased during the development of obesity [9]. When TNF- α was neutralised, insulin sensitivity was improved [9], linking adipose tissue inflammation with insulin resistance. In normal circumstances, interaction of insulin with insulin receptor (IR) will promote conversion of fatty acids into triacylglycerols, using glucose-derived glycerol 3-phosphate as a substrate for esterification, in adipocytes. Consequently, insulin induces a coordinated uptake of fatty acids and glucose into adipose tissue, followed by esterification into triacylglycerol. Obviously, any dysregulation of these pathways will lead to excess levels of circulating glucose and fatty acids, which is observed in T2DM.

Interestingly, adipose tissue also releases adipocytokines (adipokines) into the circulation, such as leptin and adiponectin. In 1994, leptin was shown to modulate food consumption and energy expenditure via neuroendocrine signalling in the hypothalamus [10]. Comparably, adiponectin was demonstrated to promote improved insulin sensitivity, and mice with adiponectin-deficiency were severely insulin resistant [11]. Thus, adipokines are believed to modulate insulin sensitivity in the principal organs targeted by insulin, such as liver, adipose, and skeletal muscle.

As a component of the development of obesity and related metabolic dysfunction, immune cells such as macrophages

accumulate in the adipose tissue, secreting proinflammatory cytokines that impact glucose and lipid metabolism [11]. The infiltration of excessive numbers of macrophages into adipose tissue and subsequent activation is critical to TNF- α and interleukin- (IL-) 6 production and release, which can reduce lipoprotein lipase enzyme activity, thus increasing blood lipid levels. In parallel, hormone-sensitive lipase activity can be enhanced in adipose tissue by TNF- α , which further increases the release of nonesterified fatty acids (NEFAs) into the blood, while concomitantly reducing insulin-stimulated glucose uptake via impaired insulin signalling. Taken together, these effects would significantly increase plasma lipid levels and, in combination with reduced lipid disposal by adipose tissue, would lead to damaging levels of blood LDL in T2DM. In addition, other proinflammatory cytokines can negatively affect metabolic pathways responsible for correctly storing/oxidising glucose and lipids in tissues that are physiological targets for insulin. These inflammatory exchanges may lead to hyperglycaemia and dyslipidaemia, which are important parameters indicative of insulin resistance, obesity, and T2DM [6, 11] (Figure 1).

3. Mechanisms Driving Peripheral Insulin Resistance

Insulin resistance is a phenomenon that plays a significant role in the progression and development of metabolic diseases associated with neurodegeneration and obesity (Figure 1). Insulin resistance refers to impaired or failed cell response to insulin receptor-activated signalling in insulin-sensitive tissues such as the liver, skeletal muscle, adipose [12], and brain [2, 13]. This results in a reduction of glucose uptake by these tissues, with a concomitant increase in hepatic glucose output, both leading to elevated plasma glucose concentrations. The subsequent change in glucose homeostasis places an increased burden on pancreatic β -cells to produce and secrete more insulin in order to restore normal blood carbohydrate levels. While this compensatory mechanism may alleviate glucose levels in early or prediabetes, persistent insulin resistance and continued exposure of β -cells to excess blood glucose and lipids promote β -cell dysfunction, failure, and ultimately death, culminating in overt diabetes (Figure 1).

Once released into the circulation by β -cells in response to elevated blood glucose levels, insulin elicits its anabolic effects via association with the transmembrane insulin receptor (IR) in target tissues. The interaction with insulin induces autophosphorylation of the receptor and the recruitment and phosphorylation of insulin receptor substrate (IRS) proteins and activation of associated downstream signalling cascades, for example, phosphatidylinositol-3-kinase (PI3K) and protein kinase B (Akt) [14, 15]. Akt is an important regulator of GLUT-4 vesicle translocation to the plasma membrane, which is critical for the intracellular uptake of free glucose in insulin-sensitive tissues [16, 17]. Further details and a full description of nutrient regulated insulin action have recently been published [12].

Insulin resistance can occur due to interference in the common insulin signalling cascade due to either genetic

mutations or structural modifications to any of the signalling nodes in the insulin signalling pathway. In particular, mutations and serine associated hyperphosphorylation of IRS proteins have been linked with development of insulin resistance and it was speculated that this is because of decreased interaction with PI3K [18]. Homozygous interruption of IRS1 expression in mice led to mild insulin resistance [19], while complete depletion of IRS2 expression in rodents resulted in severe insulin resistance [20].

Structural modification by hyperphosphorylation of serine at residues Ser³⁰², Ser³⁰⁷, Ser⁶¹², and Ser⁶³² in IRS1 was suggested to be an important mechanistic element responsible for increased insulin resistance in rodent models [18]. Indeed, excessive expression of proinflammatory cytokines and signalling proteins such as TNF- α and JNK1, which may be derived from adipose expansion, can induce serine hyperphosphorylation of IRS1 [21, 22], particularly at residue Ser⁶³⁶. However, it is not entirely clear which individual residues or combination of residues must be hyperphosphorylated to promote the insulin resistant phenotype.

Another possible molecular mechanism that may lead to impaired insulin signal transduction is the dysfunctional regulation of PI3K activity. It was previously suggested that elevated expression of individual regulatory domains of PI3K (e.g., p85) in skeletal muscle, promoted pregnancy-induced insulin resistance by preventing the binding of the signalling heterodimer with IRS [23]. Conversely, genetic deletion of PI3K p85 regulatory domains in the liver of mice boosted hepatic and peripheral insulin sensitivity [24].

On the other hand, the insulin resistant phenotype may be a consequence of a more direct mechanism that promotes decreased IR expression or desensitisation to the insulin ligand. It is speculated that chronic hyperglycaemia and prolonged hyperinsulinaemia, along with increased reactive oxygen and nitrogen species (ROS and RNS, resp.) levels may affect IR gene expression via dysfunction of key transcription factors such as high mobility group AT-hook 1 (HMGA-1) [25] or may induce IR-desensitisation which under normal conditions is a process under negative-feedback control [26]. Chronically, hyperinsulinaemia is a key pathological characteristic of insulin resistance but it is not clear whether this is a cause or a consequence [26, 27].

Interestingly, excessively high carbohydrate levels can also promote decreased insulin binding and reduced IR mRNA expression in skeletal muscle [28]. High glucose and high insulin in combination may reduce insulin binding to the IR in adipocytes [29], resulting in a negative impact on Akt activity. Increased production of ROS/RNS or decreased antioxidant capacity as a result of increased carbohydrate metabolism in insulin target tissues may alter the phosphorylation status of these signalling nodes causing deactivation. It has been shown that oxygen peroxide (H₂O₂) exposure can induce a significant loss in proximal and distal insulin signalling along with decreased glucose transport in adipocyte and muscle cell lines *in vitro* [17].

More specifically, H₂O₂ promoted Ser³⁰⁷ phosphorylation of IRS1 and this led to the enhancement of IRS proteolysis [30, 31]. Indeed, proinflammatory cytokines such as TNF- α

can also promote phosphorylation of similar IRS residues and thereby decrease the interaction of the protein with the IR. Proinflammatory cytokines are elevated in obesity and T2DM and when coupled with excessive oxidative stress maintain a proinflammatory environment, which leads to further activation of proinflammatory pathways (NF κ B and JNK) and enhances the recruitment of immune cells to insulin target tissue. Consequently, inflammation also plays a significant role in T2DM progression and insulin resistance (Figure 2).

4. Insulin Resistance Can Result in the Development of Neuronal Dysfunction in Alzheimer's Disease (AD)

As in peripheral tissues, insulin through its action on the hypothalamus has important roles in the brain to regulate appetite, glucose, and lipid homeostasis [32, 33]. Insulin and its receptor are also abundant in other areas of the brain including the hippocampus [34] where insulin signalling is becoming increasingly recognised to have function in modulating memory and learning and being required for synaptic plasticity [35, 36] and neuronal stem cell activation and has neuroprotective properties [37, 38]. Although not the main function in the brain, insulin can promote glucose uptake through its regulation of GLUT-4 transporter (GLUT-4) [39]. But GLUT-4 is only expressed in certain neurons (i.e., hippocampal neurons) [40] and is not considered as the primary transporter of glucose in the brain. This role is primarily carried out by the major GLUTs expressed in the brain, GLUT-1 (in astrocytes) and GLUT-3 (neurons), independently of insulin [41]. The disruption of insulin signalling and glucose transport in neurons can contribute to the progression of neurodegenerative diseases such as AD (Figure 2).

Peripheral hyperinsulinaemia, but reduced insulin sensitivity in fasting and during glucose tolerance tests, has been reported in AD patients [1]; however, the impact on insulin levels and sensitivity in CNS remain to be fully determined. An initial study by Fujisawa and colleagues showed that compared to controls both peripheral and CSF insulin levels were higher in AD subjects following a glucose tolerance test and fasting [42]. Subsequent studies have either shown a reduction [43] or no change [44] in fasting CSF insulin levels in AD subjects compared to controls. As discussed by Reger and colleagues, differences in potential confounding factors such as BMI and control for AD genetic risk factors (i.e., presence of APOE ϵ 4) or AD severity may have accounted for differences between these studies. More recently, findings from Suzanne Crafts group have shown that CSF insulin levels are reduced in early stages of AD or in the mild cognitively impairment [45] and diets rich in fats and sugar lower CSF insulin levels in healthy adults and this was associated with reductions in cognitive functioning [46]. Whether changes in peripheral insulin levels reflect changes in brain insulin levels is unclear. However, it is possible that increases in peripheral insulin levels acutely elevates CSF and brain insulin levels, but prolonged hyperinsulinaemia

reduces insulin transport to the brain, by downregulating insulin receptors at the BBB [47].

Cerebral glucose metabolism is reduced in AD brain and FDG-PET imaging studies have shown that this is an early feature of disease progression [48]. In imaging studies of AD pathology (i.e., PET amyloid imaging), associations with hyperglycaemia, insulin resistance, and cerebral glucose hypometabolism are less clear with conflicting findings among studies [49–52]. Factors such as age of disease onset, stage of disease (preclinical, early, and late), co-morbidities, different populations, cohort sizes, and type (longitudinal versus cross sectional) require consideration in future studies. Despite this, *in vitro* and *in vivo* animal studies have provided insight into the associations between T2DM and AD pathology.

Key pathological hallmarks of the AD brain include brain atrophy (due to neuronal loss), extracellular deposition of amyloid plaques, accumulation of intracellular neurofibrillary tangles (NFTs), inflammation, and oxidative stress. Amyloid plaques result from the accumulation of the amyloid- β -protein (A β). Together with A β , the accumulation of the major component of NFTs, hyperphosphorylated tau protein, is thought to drive neurodegeneration [53, 54]. The accumulation and deposition of A β in the brain is thought to occur early in the disease process [55] and initiate downstream events, including tau phosphorylation, inflammation, and oxidative stress that leads to neurodegeneration. The accumulations of nonfibrillar, soluble small aggregates (“oligomers”) of A β (rather than larger aggregates/plaques) are major contributors to neurotoxicity where they inhibit synapse formation, impair memory and learning in animal models, and correlate well with the severity of neurodegeneration [56, 57]. Although underlying mechanisms remain to be fully elucidated, A β accumulation can alter number of cellular processes resulting in neuronal dysfunction [57], including brain insulin signalling.

As demonstrated in T2DM for muscle or adipose tissue, the ability of insulin to activate specific signalling pathways is weaker than normal in the AD brain. Brain levels of insulin and binding to the insulin receptor are reduced with age [58] and are markedly reduced in the AD brain compared to the controls [59, 60]. The accumulation of A β oligomers can inhibit the autophosphorylation of the insulin receptor (IR) [61]. Oligomers can also markedly reduce IR levels and activity within dendrites of hippocampal neurons [62], leading to dendritic and synaptic loss [63]. Both *in vitro* [63] and *in vivo* [13] studies have shown that IR loss and subsequent loss of synapses can be prevented through administering insulin. The loss of IR expression or impaired activity has many downstream cell signalling consequences.

Studies have shown elevated serine phosphorylation of IRS1 [2, 64, 65] resulting in the inability to transmit signals to secondary messengers, such as PI3K as described above [66]. This has downstream effects on other brain pathological markers including tau phosphorylation and neuroinflammation. PI3K/Akt signalling can mediate a number of downstream pathways including Wnt/ β -catenin pathway [67], mTOR signalling [68], and regulating GSK3 β activity. GSK3 β is a kinase involved in the phosphorylation of

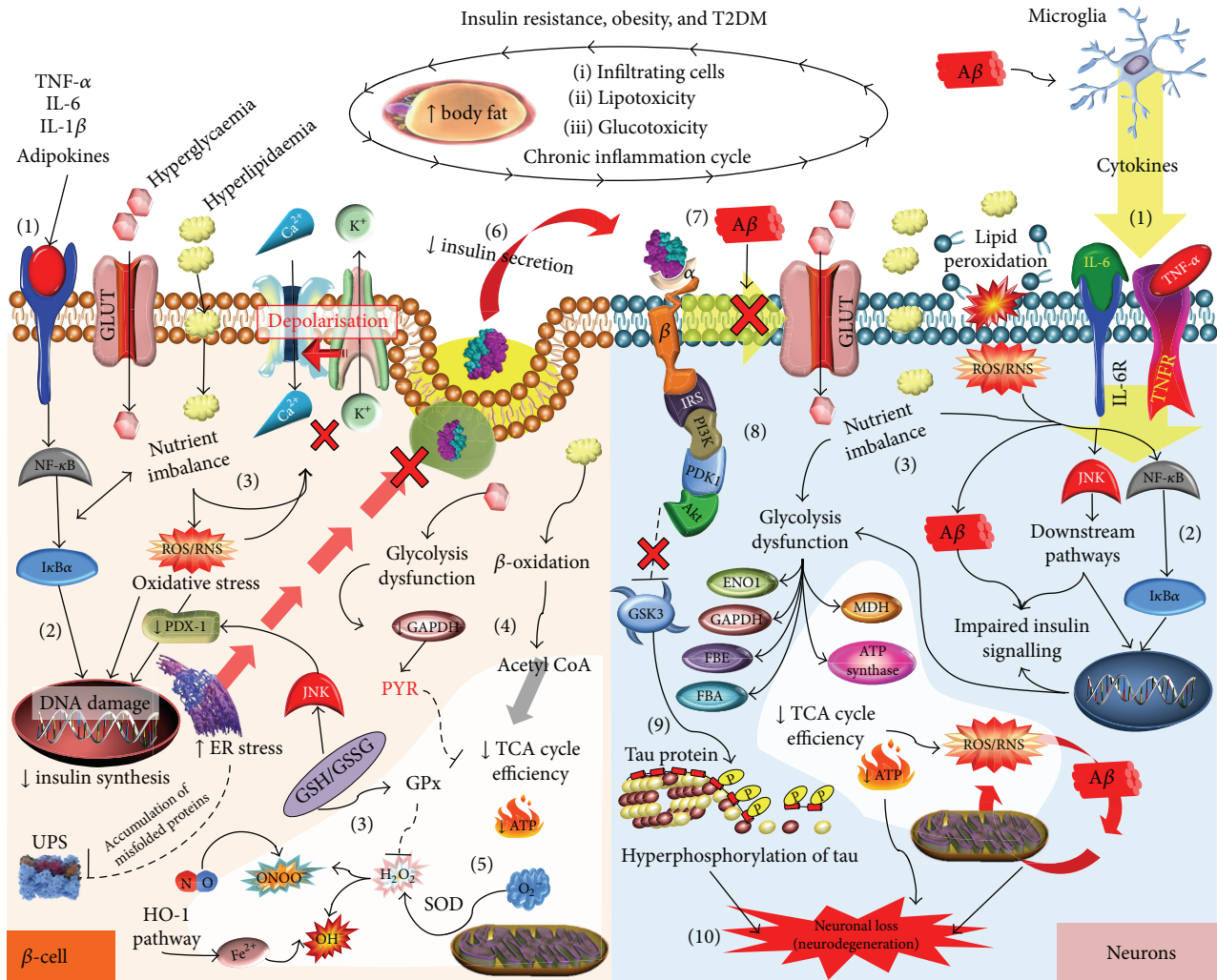


FIGURE 2: Molecular mechanisms linking insulin resistance with neurodegeneration. Obesity is characterized by chronic low-grade inflammation, which impacts all tissues and organs. Inflammatory cytokines bind to their receptors (1) activating the nuclear factor-kappaB (NF- κ B/I κ B α) pathway, which stimulates a proinflammatory condition (2). Nutrient imbalance may also activate inflammatory pathways and DNA damage, adversely impacting redox regulation (via glutathione peroxidase (GPx); glutathione (GSH) and oxidised glutathione (GSSG) levels) and so promoting oxidative stress (3). β -cell metabolism and ATP production are affected by nutrient imbalance via glycolytic dysfunction and reduced activation of glyceraldehyde 3-phosphate dehydrogenase (GAPDH) reducing pyruvate (PYR) generation but promoting β -oxidation (4). As a result of the metabolic dysfunction, superoxide and subsequently hydrogen peroxide generation (which can combine with nitric oxide, NO, to create peroxynitrite, an example of RNS) may occur due to compromised mitochondrial electron transport chain, ETC, and action, and so reducing ATP synthesis (5). All these processes impact endoplasmic reticulum (ER) stress, leading to a reduction in the ability to secrete insulin (6). High circulating levels of lipids and glucose and chronic inflammation increase amyloid beta ($A\beta$) aggregation, which together with low insulin reduce the transport and utilisation of glucose in the brain (7) via impairment in insulin signalling (8), including the negative regulator of glycogen synthase kinase 3 (GSK3). Activated GSK3 is associated with tau hyperphosphorylation (9). The vicious cycle mediated by ROS/RNS and $A\beta$ may eventually result in enzyme inhibition (e.g., alpha-enolase (ENO1), malate dehydrogenase (MDH), ATP synthase, and GAPDH), lowering ATP generation, which together with tau promotes neuronal loss (10). Protein kinase B (AKT); fructose biphosphate enolase (FBE); fructose biphosphate aldolase (FBA); calcium (Ca^{2+}); iron (Fe^{2+}); glucose transporters (GLUT); hydrogen peroxide (H_2O_2); interleukin- (IL-) 1 and interleukin- (IL-) 6; insulin receptor substrate (IRS); Janus kinase (JNK); potassium (K^+); nitric oxide (NO); anion superoxide (O_2^-); hydroxyl radical (OH^-); peroxynitrite ($ONOO^-$); pyruvate dehydrogenase kinase, isozyme 1 (PDK1); pancreatic and duodenal homeobox 1 (PDX-1); Phosphatidylinositol-4,5-bisphosphate 3-kinase (PI3K); superoxide dismutase (SOD); tumour necrosis factor alpha (TNF- α); ubiquitin-proteasome system (UPS).

tau and the deficiencies in PIK3 signalling are thought to lead to a reduction in Akt signalling resulting in reduced ability to regulate GSK3 β activity, thereby promoting tau hyperphosphorylation and the formation of NFTs [69, 70] (Figure 2). However, very recent findings argue against this

notion [71] but show that instead of deficiencies in signalling, an upregulation of PI3K/Akt/mTOR pathway occurs in brain tissue from AD and MCI subjects. In addition, compared to control brain, the authors found that GSK3 β expression was reduced in AD brain and reduction in Ser9 and increase

in Tyr216 phosphorylated GSK3 β were also observed in AD brain. Phosphorylation of Ser9 or Tyr216, respectively, can attenuate or stimulate GSK3 β activity [72–74]. Therefore, the findings by Tramutola and colleagues are in contrast to the notion that overactivation of GSK3 β leads to tau hyperphosphorylation and questions strategies to inhibit/attenuate GSK3 β as therapeutics for AD as to date inhibitors have shown little benefit in clinical trials [75].

A β -mediated phosphorylation of Akt can also occur in the absence or presence of insulin [62], suggesting the involvement of IR-independent pathways, possibly through inflammatory cytokines. Proinflammatory cytokines TNF- α , IL-1 β , and IL-6 are increased in both T2DM and AD [76] and this can have neurotoxic effects in the CNS [77]. This increase could exacerbate the effects observed from the activation of microglia by A β oligomers which promotes the secretion of further proinflammatory cytokines. The accumulation of these cytokines can induce neuronal death by increasing apoptosis, reducing synaptic activity, and inhibiting neurogenesis [78].

One potential mechanism by which inflammation can potentiate its neurotoxic effects is through blocking of intracellular actions of insulin, as proinflammatory cytokines can activate kinases to phosphorylate IRS1 at specific serine residues associated with downstream inhibition of insulin signalling events [79]. Other mechanisms could involve the receptor for advanced glycation end products (RAGE), which in the CNS is expressed in neuronal cells, microglia, astrocytes, and brain endothelial cells. RAGE levels are increased in AD and T2DM [80] and are a potential mechanism for vascular dysfunction [81] in these diseases and interactions between disturbed glucose metabolism, oxidative stress, and accumulation of AGEs are important in the vicious cycle that contributes to AD progression and T2DM [82]. In addition to its role in transport of A β across the BBB from the periphery into the brain [83] which can promote neurodegenerative pathways, its expression in many cell types within the CNS and binding to A β can induce cerebrovascular dysfunction and promote the release of cytokines (TNF- α and IL-6) from microglia, potentially through inducing the expression in neurons of macrophage-colony stimulating factor (M-CSF) [83] and subsequent neuronal damage [81], further perpetuating the vicious cycle. RAGE-ligand interactions can lead to BACE1 expression, promoting the amyloidogenic processing of APP and more A β generation [84]. The BACE1 promoter also contains an NF- κ B binding site [85] which is activated during RAGE-ligand interaction [86], leading to enhanced expression of RAGE resulting in further oxidative stress and inflammation which in turn sustains the formation of advanced glycation products (AGEs), A β , and impaired insulin signalling [87].

There is also evidence that suggests that the RNA-dependent protein kinase (PKR) is a critical mediator of the inflammatory response in insulin resistance [88–90] and in AD [91–94]. The proapoptotic kinase, PKR, controls the initial step in protein translation and modulates cell death and survival pathways. It is an important regulator of the production of proinflammatory factors through the activation of NF- κ B [95] and in the control of the inflammasome [96].

Inducing systemic inflammation (via administering LPS) can promote brain neuroinflammation increase A β production and PKR phosphorylation, which is downregulated in PKR knockdown mice [93], providing evidence for a role of PKR signalling in AD pathogenesis. The PKR signalling pathway and eIF2 α phosphorylation may also be a potential molecular link between T2D and neurodegeneration that occurs in AD (recently reviewed in [97]). Lourenco and colleagues (2013) [94] showed that phosphorylated PKR and its target eukaryotic translation initiation factor 2 α (eIF2 α) were increased in brains of AD mice. Exposure of neurons to A β oligomers or administering A β oligomers to monkeys via i.c.v. also increased phosphorylation of PKR and eIF2 α . In mice lacking PKR or TNF receptor or mice treated with a TNF- α neutralising antibody, A β oligomers failed to induce phosphorylation of PKR and eIF2 α . Further, activation of the TNF- α /PKR/eIF2 α pathway was linked to synapse loss and memory impairment in mice. Insulin, or glucagon-like peptide 1 (GLP-1) receptor agonists inhibited A β induced phosphorylation eIF2 α , indicating that stimulating insulin signalling may prevent inflammation mediated synaptic loss and memory impairment through inhibiting/downregulating the PKR signalling pathway.

Failure of the endoplasmic reticulum (ER) adaptive capacity and subsequent activation of the unfolded protein response (i.e., ER stress) intersects inflammatory and other stress pathways (reviewed in [89]) and plays a key role in the pathogenesis of both T2D and AD. In metabolic disorders, such as obesity, inflammatory mediators and lipids can activate signalling cascades that trigger inflammatory mediators such as JNK and IKK. This in turn can lead to serine phosphorylation of IRS1/2 and subsequent inhibition of insulin signalling [89]. The activation of inflammatory signalling pathways can trigger ER stress which can lead to further inhibition of insulin action in addition to generation of reactive oxygen species (ROS) through mitochondrial dysfunction [89].

In the AD brain, markers of ER stress including BiP/GRP78, pERK, and eIF2 α are elevated [98, 99], and expression of PKR-p is increased in AD brain [100]. A β oligomers can upregulate ER stress responses [94, 101] potentially through activating PKR signalling and phosphorylation of eIF2 α via TNF- α pathway [94]. Ab can also lead to synthesis and transport of the ATF4 transcription factor within neuron axons, a potential mechanism by which neurodegenerative signals are transmitted between neurons and promote spreading of AD pathology and neurodegeneration [102]. Further, eIF2 α -P can promote BACE1 expression and subsequent A β production [103], suggesting that a feed-forward cycle may perpetuate further stress and neuronal dysfunction. Targeting these stress pathways may offer therapeutic targets in AD. This is highlighted by recent work in which the conditional knockout of eIF2 α kinases (PERK and GCN2) prevented A β induced impairment in long term potentiation (LTP) (synaptic activity) and memory impairment in AD transgenic mice [104]. This is further supported by findings that insulin and GLP-1 receptor agonists reduces eIF2 α phosphorylation and prevents A β -mediated neuronal dysfunction [94].

4.1. Insulin Resistance Is Associated with Elevated A β . The features of insulin resistance in T2DM including hyperglycaemia, dyslipidaemia, and hyperinsulinaemia are all known to promote A β accumulation [105–109] (Figure 2). It is difficult to tease apart which of these metabolic disturbances contribute as single or in combination with the development of neuronal dysfunction, which disrupts the production or clearance of A β . Importantly, an excess of A β accumulation in the brain establishes a vicious cycle of impaired brain insulin signaling, inflammation, and oxidative stress processes that promote neurodegeneration in the AD brain. There is also some evidence that A β accumulates in peripheral tissues such as the pancreas [107, 110] and that A β can induce insulin resistance in the liver [111] suggesting that not only can insulin resistance promote A β accumulation but also the reverse could occur. Further confirmation for this interesting scenario is required and in particular determining if this is a cause or effect of insulin resistance/A β accumulation.

Studies of high fat feeding in transgenic mouse models of AD or diabetic rodent models have shown that insulin resistance can lead to an increase in the expression of key enzymes that generate A β (BACE1 and γ -secretase) [107, 108]. Upregulation of the autophagy pathway has also been shown to contribute to A β accumulation, where autophagosomes are sites of A β generation [112] and accumulate following insulin resistance [108]. This could result from defects in insulin signalling resulting in deficiencies in autophagic flux (and removal of autophagosomes), resulting from the inhibition of the signalling target molecule mTOR [108].

In sporadic AD cases, impaired clearance or removal of A β from the brain is a major contributor to promoting amyloid accumulation. The removal of A β from the brain can occur via a number of mechanisms, including promoting the efflux of A β from the brain and enhancing the degradation of A β (for review see Bates et al. [113]). Degradation by the insulin degrading enzyme (IDE) has been suggested to be the primary regulator of A β [114, 115], where overexpression has shown to dramatically reduce A β accumulation [116] and depletion/reduction in levels has shown to promote A β accumulation [117, 118]. Through competitive inhibition of IDE increased insulin levels can inhibit IDE leading to A β accumulation in the periphery and CNS [119, 120]. In addition, depletion of IDE levels or reduced activity leads to hyperinsulinaemia and impaired glucose tolerance associated with a chronic elevation of A β [117]. Overall these findings in various *in vivo* models suggest that reduced expression or activity of IDE is a major contributor to the A β accumulation and development of AD pathology.

In line with this notion are studies that show reduced IDE levels in AD patients compared to controls [114, 121, 122]. A more recent study argues that in addition to enhancing A β production, T2DM impairs the clearance of A β but not through altering IDE expression [107, 123]. AD transgenic mice fed a high fat diet showed glucose intolerance associated with insulin resistance and impaired insulin production associated with accumulation of A β in the brain and the periphery. This accumulation of A β and associated memory impairments was reversed with the acute administration of insulin [107]. Brain levels of IDE or transporter proteins

(LDL receptor-related protein 1 and RAGE) involved in the efflux/influx across the blood-brain-barrier were not altered. Instead, insulin administration led to an increase of blood A β associated with a reduction in brain A β , indicating clearance of A β into the blood. The authors concluded that a combination of complementary mechanisms of CNS A β production and clearance towards the blood underlies the benefits of insulin at reversing AD pathology in mice in this study. However, it is unclear how A β is transported across the blood-brain-barrier and into the blood, and the authors did not explore the role of other A β transporters including apolipoprotein J [123].

To attempt to tease out the effects of elevated blood glucose levels independent of insulin resistance, a very recent study combined glucose clamps and *in vivo* microdialysis to assess changes in AD transgenic mice during a hyperglycemic challenge [109]. The authors found that increased blood glucose levels as a result of the clamp were associated with and increased A β levels in the interstitial fluid (ISF) in young mice and persisted after euglycaemia was restored. Whilst total A β load in the brain did not change, hippocampal metabolism and neuronal activity were reduced. This effect was exacerbated in older mice with established plaque pathology, indicating that age and pathology can influence the brain's response to the metabolic insults. The study also suggests that repeated exposures to acute hyperglycaemia can promote A β accumulation altering hippocampal and neuronal functioning early in the disease process. This is consistent with a recent study that showed that increased fasting blood glucose was associated with reductions in brain gray matter and hippocampal volume and was also associated with impaired attention and memory in young and middle-aged adults [8]. A graded association was observed between fasting blood glucose levels in normal, prediabetic, and diabetic ranges and measures of brain atrophy. This has clinical relevance as these studies suggest that even at an early stage of diabetes (or prediabetes), increases in blood glucose levels have detrimental effects on memory, hippocampal integrity, and A β accumulation. In addition, there are conflicting results amongst other studies that assess improvements in memory following glycaemic control in the elderly. For example, in the ACCORD memory study of elderly patients with T2DM, intensive glycaemic control showed a small difference in brain volume but no evidence of cognitive improvement and furthermore the targeted treatment was associated with increased mortality [124]. Taken together, these studies demonstrate that age, duration, and severity of pathology impact the effects of diabetes on the brain and that treatment in late-life may be not as effective as preventative strategies that can be implemented at young age.

5. Redox Regulation Pathways: Common Targets in T2DM and AD

Dysregulation of some metabolic, molecular, and cellular processes is common in T2DM and AD, particularly in β -cells and neurons, respectively. Cell and tissue oxidative stress are a key player in both diseases. Pathophysiologically, reactive

oxygen species (ROS) and reactive nitrogen species (RNS), such as superoxide anion ($O_2^{\cdot-}$), hydrogen peroxide (H_2O_2), hydroxyl radical (OH^{\cdot}), nitric oxide (NO), and the related peroxynitrite ($ONOO^{\cdot}$), contribute to key metabolic and physiologic processes. This includes mitochondrial function [125], which if impaired will reduce ATP generation capacity which will impact β -cell glucose stimulated insulin secretion (GSIS), the NADPH complex, and Ca^{2+} signalling associated with neurotransmission [126, 127].

With respect to insulin resistance and the progression to T2DM, continuous overnutrition leads to chronic ROS and RNS production, which promotes oxidative stress in key cells, tissues, and organs. Eventually, oxygen and nitric oxide based free radicals damage cell membranes, DNA, and protein structures, as well as modulating the activity of transcriptional factors through redox chemistry, including NF- κ B, leading to chronic inflammation and cell apoptosis [125]. Although every single cell can be potentially damaged by oxidative stress, the reduced capacity of peroxidase based antioxidant defence mechanisms can particularly expose both β -cells and neurons to damage resulting in progression of T2DM and AD (Figure 2). The sources of ROS from mitochondrial dysfunction, inflammation, advanced glycation end products (AGEs), and increased cytosolic Ca^{+2} levels can promote redox dysregulation and perpetuate oxidative stress in AD and T2D (recently reviewed in [128]).

The reduced capacity to scavenge free radicals is a major avenue for increased ROS production. Glutathione (GSH) is one such important free radical scavenger that is generated from the reduction of glutathione disulphide (GSSG) by the enzyme glutathione reductase. In addition to many other reducing enzymes, NADPH is an essential cofactor for the activity of glutathione reductase. Other metabolic pathways that are favoured under conditions of overnutrition or hyperglycemia can consume NADPH, thereby reducing the cells capacity to generate GSH. One example is the polyol pathway flux in which glucose is reduced to sorbitol by aldose reductase; sorbitol is then transformed to fructose by sorbitol dehydrogenase. Although aldose reductase has a low affinity for glucose, activity is increased under hyperglycemic conditions and thus more NADPH is consumed [128]. In addition, reduced levels of GSH can result from T2D, due to impaired protein turnover or dietary deficiency in essential amino acids required to synthesize GSH [129]. Similarly, GSSG levels are reduced in AD patients and correlate with reduced cognitive functioning [130, 131] and have been investigated as potential for a biomarker [132]. Inhibiting the polyol pathway has been shown to normalise sorbitol in the brain in the presence of hyperglycaemia [133], suggesting that impaired cognitive functioning associated with hyperglycaemia may be attenuated through preventing the breakdown of sorbitol (and thus minimising the consumption of NADPH).

The conversion of glucose to ribose-5-phosphate by glucose-6-phosphate dehydrogenase (G6PD) is the first and rate-limiting step of the pentose phosphate pathway and is a major pathway that generates NADPH. A decrease in G6PD activity can thereby lead to a reduction in NADPH, promoting oxidative stress [134–136]. This reduction in activity can

in part be induced by the increased phosphorylation of G6PD by protein kinase A (PKA) activation under high glucose conditions [137]. Interestingly, an increased PKA activity has been associated with tau phosphorylation [138, 139] and impaired synaptic activity [36, 140, 141].

Other sources of NADPH include those generated from isocitrate dehydrogenase (IDH) activity within the citric acid cycle that converts $NADP^+$ to NADPH and malic enzyme which catalyses the formation of pyruvate, CO_2 , and NADPH from malate and $NADP^+$. When exposed to high glucose, glucose 6-phosphate, and fructose, IDH undergoes fragmentation and carbonylation leading to reduced activity [142]. This reduction correlated with ROS generation, DNA fragmentation, lipid peroxidation, and decreases in ATP levels [143]. In the liver, malic enzyme supplies NADPH for fatty acid biosynthesis, but in the brain mainly located in oligodendrocytes malic enzyme generates NADPH for myelin lipid synthesis for myelination of neuronal axons (Rosales-Corral et al., 2015). Malic enzyme may also serve to regenerate GSH in the brain as the enzyme is abundant in mitochondria of neurons [144–146]. In adipose tissue the levels of ME are diminished in T2D, linked to reduced lipogenesis [147]; however, more recently, although there were reductions in other NADPH synthesising enzymes, levels of malic enzyme in islet pancreatic cells were not significantly different in diabetics compared with controls [148]. Overall, the failure to replenish endogenous antioxidants such as GSH can occur due to diminished NADPH levels due to a high demand in its utilisation in a number of pathways that are promoted with T2D. This in turn diminishes the capacity to scavenge ROS, favouring oxidative stress and progression in T2D/AD.

The capacity to reduce oxidised proteins also plays a role in promoting oxidative stress processes and this is regulated by a number of proteins that act as redox sensors. A major class of these redox proteins is thioredoxin (Trx) which reduce oxidised proteins by cysteine thiol disulfide exchange [149]. In the process, Trx is oxidised which is further reduced by NADPH. Trx can be inactivated by alkylating agents or, as in T2D, the oxidative stress mediator thioredoxin-interacting protein (TxNIP), which is upregulated by glucose [150]. TxNIP can mediate glucotoxicity in islet cells [151] and trigger activity of the NLRP3 inflammasome [152] and can promote ER stress and apoptosis. TxNIP expression is also induced in neurons after oxidative stress, ER stress, or ischemic injury ultimately resulting in neuronal death [153, 154]. TxNIP is also overexpressed in brains of an AD mouse model and can be induced by $A\beta$, *in vitro* [155], suggesting a role for TxNIP in AD pathogenesis.

The GSH/GSSG and thioredoxin pathways are examples by which proinflammatory processes are aided by redox sensors which are regulated by changes in redox potential and are modulated by physiological or pathological situations. Under conditions of T2D/AD where oxidative stress features and persists the redox reduction of redox sensors diminishes and shifts cells toward proinflammatory pathways promoting apoptosis and more oxidative stress establishing a vicious cycle that ultimately leads to cell dysfunction/death.

5.1. β -Cell Oxidative Stress. Pancreatic β -cell responsiveness to glucose, the major insulin secretagogue, is dependent on the acute regulation of intracellular and, in certain cases, extracellular ROS and RNS [126, 127]. Increased glycolytic flux boosts oxidative phosphorylation and ATP production but may also lead to $O_2^{\bullet-}$ formation and release from the electron transport chain [156]. In addition, conversion of surfeit glucose to pentose via the pentose phosphate pathway is an initial adaptive response to deviate glucose carbon away from excessive glycolysis and oxidative phosphorylation, but shuttling glucose in this direction may also promote NADPH oxidase (NOX) activity leading to increased $O_2^{\bullet-}$ synthesis. Importantly, high glucose levels raise ROS via other mechanisms, such as glucose autooxidation and generation of AGEs.

Removal of $O_2^{\bullet-}$ requires the action of superoxide dismutase (SOD), generating the more stable but perhaps less directly damaging H_2O_2 . However, H_2O_2 can subsequently generate the highly reactive OH^\bullet by the iron-catalysed Fenton reaction [126, 156, 157] and with nitric oxide (NO) forms ONOO⁻ [126]. ROS and RNS cause oxidative damage to DNA, lipids, and proteins through nitration, carbonylation, peroxidation, and nitrosylation reactions. These molecular modifications may alter enzyme activity, ion channel transport, or receptor signal transduction and consequently dysregulate gene expression, which may impact β -cell functionality [126]. Moreover, ROS-mediated activation of JNK signalling leads to decreased insulin secretion via nucleocytoplasmic translocation of PDX-1, a key transcription factor that drives insulin expression through association with the insulin gene promoter (Figure 2) [158].

Reactive oxygen and nitrogen species production is critical to the regulation of metabolism. For instance, NO regulates the interaction between glucokinase and insulin secretory granules [159] and also affects insulin granule docking with the plasma membrane through S-nitrosylation of syntaxin 4 [160]. Generation of low- to mid-range H_2O_2 levels may positively regulate mitochondrial Ca^{2+} influx [161], which is critical for increasing tricarboxylic acid cycle activity and thus the second phase of insulin secretion [162]. However, low levels of physical activity and overnutrition at the whole body level cause elevated blood glucose and lipids which can promote higher generation rates of reactive oxygen and nitrogen species leading to cellular dysregulation and thus toxicity (Figure 1).

Pancreatic β -cells have a high metabolic activity; however, these cells are vulnerable to oxidative stress, since these cells express low levels of ROS/RNS detoxifying enzymes, such as catalase (CAT) and glutathione peroxidase (GPx) [126, 157]. Thereby, glutaredoxin and thioredoxin antioxidant reactions, which are mediated by the glutathione (GSH) system, are critical for β -cells [126]. GSH (L- γ -glutamyl-L-cysteinylglycine) can directly react with ROS or be a cofactor for GPx activity. GSH *de novo* synthesis is dependent on cysteine and especially glutamate; however, the rate-limiting step is glutamate, which is usually donated from glutamine [163]. Glutamine is the most abundant amino acid in the circulation and is considered a key metabolic mediator of

insulin secretion in the presence of glucose or leucine. However, glutamine levels are decreased in T2DM [164].

Interestingly, glutamine is also an influential modulator of the Heat Shock Protein (HSP) response, which may be activated following an oxidative insult or increased endoplasmic reticulum (ER) stress. Although HSPs act as molecular chaperones for proteins damaged by oxidative processes and thus act intracellularly, they are recognised as cytoprotective agents [163, 165]. Conversely, extracellular HSP72 decreased β -cell insulin secretion, modified cellular bioenergetics, and initiated apoptosis *in vitro* [166]. This pathogenic extracellular release of HSP70 from tissues reacting to adverse metabolic conditions or trauma, may be common to many chronic diseases and is under current investigation.

Oxidative stress in β -cell may also occur through heme oxygenase-1 (HO-1), which degrades prooxidant heme into equimolar quantities of biliverdin-IX α (further converted to bilirubin), carbon monoxide (CO), and ferrous iron (Fe^{2+}). Simultaneous production of CO and Fe^{2+} may impact β -cell insulin secretion [167]. Although CO gas may regulate insulin secretion via mobilisation of cAMP and cGMP, high iron concentration was associated with impaired insulin elimination from the liver and reduced insulin secretion and action [47]. Together with lipotoxicity and glucotoxicity effects, excessive ferrous iron (Fe^{2+}) raises ROS/RNS through Fenton reactions. Similar effects can also be observed in the brain where CO and Fe^{2+} can modulate hippocampal synaptic activity and potentially be protective at low concentrations [168], whereas at higher levels they are neurotoxic [169]. Other biproducts of HO-1 activity within the heme oxygenase/biliverdin reductase pathway (BVR), biliverdin (BV) and bilirubin (BR), also have well known activities in scavenging ROS/RNS [170, 171]. These products from the BVR pathway are markedly increased in brain and other tissues when antioxidant systems (i.e., glutathione and catalase) are reduced (i.e., such as that observed in neurodegeneration) [172–174] and have been shown to have greater scavenging capacity for ROS/RNS than dietary antioxidants such as α -tocopherol in rat brain microsomes [171].

The role of HO-1 in T2DM and AD is further highlighted by the correlation between increased levels of HO-1 with brain oxidative markers [47] and links with insulin resistance and insulin signalling [175]. For example, IGF-1 administered to rats following spinal cord injury inhibits HO overexpression and CO production in neurons [176]. Treating neuronal cells with berberine, a herbal antidiabetic that improves insulin sensitivity, attenuated H_2O_2 induced cell toxicity, reduced ROS production, and increased antioxidant defences and HO-1 [177]. This effect was inhibited by PI3K inhibitor indicating that the benefits of berberine were dependent on PI3K/Akt signalling. A more recent study showed further evidence for a role in HO-1 in insulin resistance [178], although it did not explore subsequent effects on the brain. The findings from Jais and colleagues (2014), through several lines of evidence, suggested that HO-1 has a key role in insulin resistance and diabetes. HO-1 expression increased in liver and adipose biopsies from nondiabetic obese individuals and correlated directly with metabolic dysregulation in these individuals

and was a major predictor of increased HOMA-IR levels. Similar findings were found in mice fed a high fat diet, where liver HO-1 expression increased and correlated with insulin resistance in these mice. The authors further found that hepatocyte HO-1 knockout mice were insulin hypersensitive, while overexpression of HO-1 exacerbated insulin resistance, steatosis, and metabolic dysfunction. Similar findings were reported in macrophage knockout HO-1 mice where reduced secretion of proinflammatory cytokines, blunted NF- κ B signalling, and reduced oxidative phosphorylation and ROS production and signalling indicated that these mice were resistant to metabolic disease. Given the links between HO-1 and insulin resistance and metabolic dysfunction, it would be interesting to determine if changes in HO-1 expression correlated with cognitive impairment or AD brain pathology or if HO-1 has roles in neuronal dysfunction. Similar studies to that of Jais and colleagues in AD mouse models may provide further insight into the role of HO-1 in AD.

5.2. Neurons, Oxidative Stress, and Development of AD. The high content of lipids, high requirement for oxygen, and the scarcity of antioxidant defence mechanisms make the brain highly susceptible to oxidative stress. Oxidative stress is well recognised to play a major role in the neurodegenerative process in the AD brain [179, 180]. Markers of oxidative stress, oxidised lipids, proteins, and ROS production all feature prominently in AD and other neurodegenerative diseases. Enzymes involved in metabolic pathways including glycolysis and the Krebs cycle are oxidised not only in the AD brain but also from those that have mild cognitive impairment, suggesting that these changes are an early feature of the disease process [47, 181]. As a result of these changes cerebral glucose metabolism is reduced leading to reduced ATP synthesis, contributing to disruption of neuronal functioning, loss of synapses, and overall neurodegeneration [41, 47].

As a major organelle for many biological functions including ATP synthesis and also a major site for ROS generation, it is not surprising that mitochondria dysfunction is prominent in both T2DM and AD [182]. Reductions in mitochondrial enzyme activity and oxidative stress have been shown to be early events in the disease process and in AD mouse models occur prior to amyloid plaque accumulation [183]. This may suggest that the resulting ROS generation and oxidative processes occur before any significant accumulation or A β . However, *in vitro* evidence suggests that the more neurotoxic A β oligomers can reduce cytochrome oxidase activity and increase ROS generation [184]. It remains to be determined if the oligomers are initiators of this process; however, there is evidence that age-related impairments in mitochondrial function and subsequent ROS generation are a driving force for neurodegeneration [185]. Whether this occurs prior to accumulation of A β (particularly oligomers) requires further evaluation in *in vivo* experiments. However, A β -mediated mitochondrial impairment and ROS production may induce a vicious cycle leading to further impairments in insulin signalling in AD (Figure 2). This process may be stimulated through JNK signalling pathways activated by oxidative stress, leading to insulin resistance in skeletal muscle and liver [2, 13, 65] and in the brain [186].

The oxidative processes described above as a result of insulin resistance and β -cell dysfunction could also have major contributions although whether there is a cause or effect relationship remains to be determined. Animal models of brain insulin resistance/deficiencies through intracerebrovascular injections of streptozotocin show abnormalities in mitochondrial function [187], which was associated with increased levels of endogenous rodent A β . Rodent A β does not aggregate into oligomers; thus the effects of A β accumulation independent of the effects of impaired insulin signalling could not be evaluated. More recently, injection of A β into the hippocampus of diabetic and nondiabetic rats resulted in metabolic disturbances in energy intake, fat oxidation, and increased carbohydrate oxidation and energy expenditure (Figure 2). These effects, however, were independent of diabetes status (i.e., diabetes did not exacerbate conditions) but are consistent with other studies that suggest that A β can cause metabolic dysfunction [107, 111]. Indeed, a very recent study showed that i.c.v. injection of A β oligomers into mice induced metabolic changes in muscle and adipose tissue consistent with insulin resistance (impaired signalling and translocation of GLUT-4) and also increased noradrenaline levels consistent with oligomers impairing peripheral sympathetic control [188]. The authors further showed the binding of Ab oligomers to dendrites of hypothalamic neurons and the subsequent increased generation of ROS and a TNF- α -mediated increase in eIF2 α -P and suggest impairments in function of the metabolic/weight control centre of the brain; the hypothalamus can mediate in part the metabolic changes in the periphery. This is consistent with studies in experimental models of obesity and in humans where inflammation and neuronal injury are featured in the hypothalamus [189, 190]. More relevant animal models that perhaps mimic the clinical progression of both T2DM and AD pathologies are required to study the relationship between A β , mitochondrial/dysfunction/oxidative stress, and peripheral metabolic dysfunction to understand underlying molecular mechanisms.

6. Conclusion

T2DM and AD are age-related pathological conditions, which impact health quality. At present, there is no cure, only symptomatic treatments for these diseases. Interestingly, the methods to reduce the risk of complications associated with insulin resistance and/or diabetes also shows benefits for reducing risk of AD, for example, regular physical activity and adherence to a fat and carbohydrate controlled diet. The chronic overconsumption of foods rich in carbohydrates and various saturated lipids affects insulin secretion and has major impact on cerebral glucose metabolism. Common intracellular mechanisms in T2DM and AD include aberrant redox regulation, oxidative stress, and active inflammatory processes resulting in impaired insulin secretion and signalling. Considering the alarming worldwide numbers of people with chronic insulin resistance, diabetes, and AD, intense research is now required for identifying risk, early diagnosis, and optimal treatment for these costly, damaging, and distressing diseases.

Conflict of Interests

There is no conflict of interests regarding this paper.

Authors' Contribution

All authors contributed to the writing and revision of this review. Giuseppe Verdile and Kevin N. Keane are equal first authors.

Acknowledgments

The authors thank Curtin University School of Biomedical Sciences for research support. Vinicius F. Cruzat is in receipt of postdoctoral fellowship from the São Paulo Research Foundation (FAPESP 2015/00446-4). Ralph N. Martins and Giuseppe Verdile are supported by National Health and Medical Research Council (NHMRC), Hollywood Private Hospital, and the McCusker Alzheimer's Disease Research Foundation. Nadeeja Wijesekara and Paul E. Fraser are supported by the Canadian Institutes of Health Research (CIHR) and the Alzheimer Society of Ontario (ASO). Giuseppe Verdile is supported by the Curtin Senior Research Fellowship.

References

- [1] S. Craft, J. Newcomer, S. Kanne et al., "Memory improvement following induced hyperinsulinemia in Alzheimer's disease," *Neurobiology of Aging*, vol. 17, no. 1, pp. 123–130, 1996.
- [2] K. Talbot, H.-Y. Wang, H. Kazi et al., "Demonstrated brain insulin resistance in Alzheimer's disease patients is associated with IGF-1 resistance, IRS-1 dysregulation, and cognitive decline," *Journal of Clinical Investigation*, vol. 122, no. 4, pp. 1316–1338, 2012.
- [3] S. Hoyer and R. Nitsch, "Cerebral excess release of neurotransmitter amino acids subsequent to reduced cerebral glucose metabolism in early-onset dementia of Alzheimer type," *Journal of Neural Transmission*, vol. 75, no. 3, pp. 227–232, 1989.
- [4] G. Mayer, R. Nitsch, and S. Hoyer, "Effects of changes in peripheral and cerebral glucose metabolism on locomotor activity, learning and memory in adult male rats," *Brain Research*, vol. 532, no. 1-2, pp. 95–100, 1990.
- [5] G. J. Biessels, M. W. J. Strachan, F. L. J. Visseren, L. J. Kappelle, and R. A. Whitmer, "Dementia and cognitive decline in type 2 diabetes and prediabetic stages: towards targeted interventions," *The Lancet Diabetes & Endocrinology*, vol. 2, no. 3, pp. 246–255, 2014.
- [6] M. Kooistra, M. I. Geerlings, W. P. T. M. Mali, K. L. Vincken, Y. Van Der Graaf, and G. J. Biessels, "Diabetes mellitus and progression of vascular brain lesions and brain atrophy in patients with symptomatic atherosclerotic disease. the SMART-MR study," *Journal of the Neurological Sciences*, vol. 332, no. 1-2, pp. 69–74, 2013.
- [7] C. Moran, T. G. Phan, J. Chen et al., "Brain atrophy in type 2 diabetes: regional distribution and influence on cognition," *Diabetes Care*, vol. 36, no. 12, pp. 4036–4042, 2013.
- [8] G. Weinstein, P. Maillard, J. J. Himali et al., "Glucose indices are associated with cognitive and structural brain measures in young adults," *Neurology*, vol. 84, no. 23, pp. 2329–2337, 2015.
- [9] G. S. Hotamisligil, N. S. Shargill, and B. M. Spiegelman, "Adipose expression of tumor necrosis factor- α : direct role in obesity-linked insulin resistance," *Science*, vol. 259, no. 5091, pp. 87–91, 1993.
- [10] Y. Zhang, R. Proenca, M. Maffei, M. Barone, L. Leopold, and J. M. Friedman, "Positional cloning of the mouse obese gene and its human homologue," *Nature*, vol. 372, no. 6505, pp. 425–432, 1994.
- [11] S. Tateya, F. Kim, and Y. Tamori, "Recent advances in obesity-induced inflammation and insulin resistance," *Frontiers in Endocrinology*, vol. 4, article 93, 2013.
- [12] P. Newsholme, V. Cruzat, F. Arfuso, and K. Keane, "Nutrient regulation of insulin secretion and action," *The Journal of Endocrinology*, vol. 221, no. 3, pp. R105–R120, 2014.
- [13] T. R. Bomfim, L. Fornhy-Germano, L. B. Sathler et al., "An anti-diabetes agent protects the mouse brain from defective insulin signaling caused by Alzheimer's disease-associated A β oligomers," *The Journal of Clinical Investigation*, vol. 122, no. 4, pp. 1339–1353, 2012.
- [14] M. F. White, S. E. Shoelson, H. Keutmann, and C. R. Kahn, "A cascade of tyrosine autophosphorylation in the β -subunit activates the phosphotransferase of the insulin receptor," *Journal of Biological Chemistry*, vol. 263, no. 6, pp. 2969–2980, 1988.
- [15] M. F. White, "Insulin signaling in health and disease," *Science*, vol. 302, no. 5651, pp. 1710–1711, 2003.
- [16] C. M. Taniguchi, B. Emanuelli, and C. R. Kahn, "Critical nodes in signalling pathways: insights into insulin action," *Nature Reviews Molecular Cell Biology*, vol. 7, no. 2, pp. 85–96, 2006.
- [17] E. J. Henriksen, M. K. Diamond-Stanic, and E. M. Marchionne, "Oxidative stress and the etiology of insulin resistance and type 2 diabetes," *Free Radical Biology & Medicine*, vol. 51, no. 5, pp. 993–999, 2011.
- [18] V. Saini, "Molecular mechanisms of insulin resistance in type 2 diabetes mellitus," *World Journal of Diabetes*, vol. 1, no. 3, pp. 68–75, 2010.
- [19] E. Araki, M. A. Lipes, M.-E. Patti et al., "Alternative pathway of insulin signalling in mice with targeted disruption of the IRS-1 gene," *Nature*, vol. 372, no. 6502, pp. 186–190, 1994.
- [20] N. Kubota, K. Tobe, Y. Terauchi et al., "Disruption of insulin receptor substrate 2 causes type 2 diabetes because of liver insulin resistance and lack of compensatory β -cell hyperplasia," *Diabetes*, vol. 49, no. 11, pp. 1880–1889, 2000.
- [21] G. S. Hotamisligil, P. Peraldi, A. Budavari, R. Ellis, M. F. White, and B. M. Spiegelman, "IRS-1-mediated inhibition of insulin receptor tyrosine kinase activity in TNF- α - and obesity-induced insulin resistance," *Science*, vol. 271, no. 5249, pp. 665–668, 1996.
- [22] C. A. Stuart, M. E. Howell, B. M. Cartwright et al., "Insulin resistance and muscle insulin receptor substrate-1 serine hyperphosphorylation," *Physiological Reports*, vol. 2, no. 12, Article ID e12236, 2014.
- [23] L. A. Barbour, J. Shao, L. Qiao et al., "Human placental growth hormone increases expression of the p85 regulatory unit of phosphatidylinositol 3-kinase and triggers severe insulin resistance in skeletal muscle," *Endocrinology*, vol. 145, no. 3, pp. 1144–1150, 2004.

- [24] C. M. Taniguchi, T. T. Tran, T. Kondo et al., "Phosphoinositide 3-kinase regulatory subunit p85 α suppresses insulin action via positive regulation of PTEN," *Proceedings of the National Academy of Sciences of the United States of America*, vol. 103, no. 32, pp. 12093–12097, 2006.
- [25] D. Foti, E. Chiefari, M. Fedele et al., "Lack of the architectural factor HMGAI causes insulin resistance and diabetes in humans and mice," *Nature Medicine*, vol. 11, no. 7, pp. 765–773, 2005.
- [26] W. T. Garvey, J. M. Olefsky, and S. Marshall, "Insulin induces progressive insulin resistance in cultured rat adipocytes: sequential effects at receptor and multiple postreceptor sites," *Diabetes*, vol. 35, no. 3, pp. 258–267, 1986.
- [27] H. Kodama, M. Fujita, and I. Yamaguchi, "Development of hyperglycaemia and insulin resistance in conscious genetically diabetic (C57BL/KsJ-db/db) mice," *Diabetologia*, vol. 37, no. 8, pp. 739–744, 1994.
- [28] C. Catena, A. Cavarape, M. Novello, G. Giacchetti, and L. A. Sechi, "Insulin receptors and renal sodium handling in hypertensive fructose-fed rats," *Kidney International*, vol. 64, no. 6, pp. 2163–2171, 2003.
- [29] J. Burén, H.-X. Liu, J. Lauritz, and J. W. Eriksson, "High glucose and insulin in combination cause insulin receptor substrate-1 and -2 depletion and protein kinase B desensitisation in primary cultured rat adipocytes: possible implications for insulin resistance in type 2 diabetes," *European Journal of Endocrinology*, vol. 148, no. 1, pp. 157–167, 2003.
- [30] R. Potashnik, A. Bloch-Damti, N. Bashan, and A. Rudich, "IRS1 degradation and increased serine phosphorylation cannot predict the degree of metabolic insulin resistance induced by oxidative stress," *Diabetologia*, vol. 46, no. 5, pp. 639–648, 2003.
- [31] T. L. Archuleta, A. M. Lemieux, V. Saengsirisuwan et al., "Oxidant stress-induced loss of IRS-1 and IRS-2 proteins in rat skeletal muscle: role of p38 MAPK," *Free Radical Biology & Medicine*, vol. 47, no. 10, pp. 1486–1493, 2009.
- [32] A. C. Könnner, R. Janoschek, L. Plum et al., "Insulin action in AgRP-expressing neurons is required for suppression of hepatic glucose production," *Cell Metabolism*, vol. 5, no. 6, pp. 438–449, 2007.
- [33] B. F. Belgardt, A. Husch, E. Rother et al., "PDK1 deficiency in POMC-expressing cells reveals FOXO1-dependent and -independent pathways in control of energy homeostasis and stress response," *Cell Metabolism*, vol. 7, no. 4, pp. 291–301, 2008.
- [34] S. Doré, S. Kar, W. Rowe, and R. Quirion, "Distribution and levels of [¹²⁵I]IGF-I, [¹²⁵I]IGF-II and [¹²⁵I]insulin receptor binding sites in the hippocampus of aged memory-unimpaired and -impaired rats," *Neuroscience*, vol. 80, no. 4, pp. 1033–1040, 1997.
- [35] W. Zhao, X. Wu, H. Xie, Y. Ke, and W.-H. Yung, "Permissive role of insulin in the expression of long-term potentiation in the hippocampus of immature rats," *NeuroSignals*, vol. 18, no. 4, pp. 236–245, 2011.
- [36] S.-L. Chiu, C.-M. Chen, and H. T. Cline, "Insulin receptor signaling regulates synapse number, dendritic plasticity, and circuit function in vivo," *Neuron*, vol. 58, no. 5, pp. 708–719, 2008.
- [37] A. C. Cohen, M. Tong, J. R. Wands, and S. M. de la Monte, "Insulin and insulin-like growth factor resistance with neurodegeneration in an adult chronic ethanol exposure model," *Alcoholism: Clinical and Experimental Research*, vol. 31, no. 9, pp. 1558–1573, 2007.
- [38] A. Apostolatos, S. Song, S. Acosta et al., "Insulin promotes neuronal survival via the alternatively spliced protein kinase C δ II isoform," *The Journal of Biological Chemistry*, vol. 287, no. 12, pp. 9299–9310, 2012.
- [39] J. Apelt, G. Mehlhorn, and R. Schliebs, "Insulin-sensitive GLUT4 glucose transporters are colocalized with GLUT3-expressing cells and demonstrate a chemically distinct neuron-specific localization in rat brain," *Journal of Neuroscience Research*, vol. 57, no. 5, pp. 693–705, 1999.
- [40] G. G. Pirolli, C. A. Grillo, L. R. Reznikov et al., "Corticosterone impairs insulin-stimulated translocation of GLUT4 in the rat hippocampus," *Neuroendocrinology*, vol. 85, no. 2, pp. 71–80, 2007.
- [41] Z. Chen and C. Zhong, "Decoding Alzheimer's disease from perturbed cerebral glucose metabolism: implications for diagnostic and therapeutic strategies," *Progress in Neurobiology*, vol. 108, pp. 21–43, 2013.
- [42] Y. Fujisawa, K. Sasaki, and K. Akiyama, "Increased insulin levels after OGTT load in peripheral blood and cerebrospinal fluid of patients with dementia of Alzheimer type," *Biological Psychiatry*, vol. 30, no. 12, pp. 1219–1228, 1991.
- [43] S. Craft, E. Peskind, M. W. Schwartz, G. D. Schellenberg, M. Raskind, and D. Porte Jr., "Cerebrospinal fluid and plasma insulin levels in Alzheimer's disease: relationship to severity of dementia and apolipoprotein E genotype," *Neurology*, vol. 50, no. 1, pp. 164–168, 1998.
- [44] J. A. Molina, F. J. Jiménez-Jiménez, C. Vargas et al., "Cerebrospinal fluid levels of insulin in patients with Alzheimer's disease," *Acta Neurologica Scandinavica*, vol. 106, no. 6, pp. 347–350, 2002.
- [45] M. A. Reger, G. S. Watson, P. S. Green et al., "Intranasal insulin administration dose-dependently modulates verbal memory and plasma amyloid-beta in memory-impaired older adults," *Journal of Alzheimer's Disease*, vol. 13, no. 3, pp. 323–331, 2008.
- [46] L. D. Baker, D. J. Cross, S. Minoshima, D. Belongia, G. Stennis Watson, and S. Craft, "Insulin resistance and alzheimer-like reductions in regional cerebral glucose metabolism for cognitively normal adults with prediabetes or early type 2 diabetes," *Archives of Neurology*, vol. 68, no. 1, pp. 51–57, 2011.
- [47] D. A. Butterfield, F. Di Domenico, and E. Barone, "Elevated risk of type 2 diabetes for development of Alzheimer disease: a key role for oxidative stress in brain," *Biochimica et Biophysica Acta*, vol. 1842, no. 9, pp. 1693–1706, 2014.
- [48] A. D. Cohen and W. E. Klunk, "Early detection of Alzheimer's disease using PiB and FDG PET," *Neurobiology of Disease*, vol. 72, part A, pp. 117–122, 2014.
- [49] A. A. Willette, S. C. Johnson, A. C. Birdsill et al., "Insulin resistance predicts brain amyloid deposition in late middle-aged adults," *Alzheimer's & Dementia*, vol. 11, no. 5, pp. 504.e1–510.e1, 2015.
- [50] M. Thambisetty, E. J. Metter, A. Yang et al., "Glucose intolerance, insulin resistance, and pathological features of Alzheimer disease in the Baltimore longitudinal study of aging," *JAMA Neurology*, vol. 70, no. 9, pp. 1167–1172, 2013.
- [51] R. O. Roberts, D. S. Knopman, Y. E. Geda et al., "Association of diabetes with amnesic and nonamnesic mild cognitive impairment," *Alzheimer's and Dementia*, vol. 10, no. 1, pp. 18–26, 2014.

- [52] L. Wu, J. Rowley, S. Mohades et al., "Dissociation between brain amyloid deposition and metabolism in early mild cognitive impairment," *PLoS ONE*, vol. 7, no. 10, Article ID e47905, 2012.
- [53] L. M. Ittner and J. Götz, "Amyloid-beta and tau—a toxic pas de deux in Alzheimer's disease," *Nature Reviews Neuroscience*, vol. 12, no. 2, pp. 67–72, 2011.
- [54] L. M. Ittner, Y. D. Ke, F. Delerue et al., "Dendritic function of tau mediates amyloid- β toxicity in Alzheimer's disease mouse models," *Cell*, vol. 142, no. 3, pp. 387–397, 2010.
- [55] V. L. Villemagne, S. Burnham, P. Bourgeat et al., "Amyloid β deposition, neurodegeneration, and cognitive decline in sporadic Alzheimer's disease: a prospective cohort study," *The Lancet Neurology*, vol. 12, no. 4, pp. 357–367, 2013.
- [56] D. M. Walsh and D. B. Teplow, "Alzheimer's disease and the amyloid β -protein," *Progress in Molecular Biology and Translational Science*, vol. 107, pp. 101–124, 2012.
- [57] R. M. Nisbet, J.-C. Polanco, L. M. Ittner, and J. Götz, "Tau aggregation and its interplay with amyloid- β ," *Acta Neuropathologica*, vol. 129, no. 2, pp. 207–220, 2015.
- [58] L. Frölich, D. Blum-Degen, H.-G. Bernstein et al., "Brain insulin and insulin receptors in aging and sporadic Alzheimer's disease," *Journal of Neural Transmission*, vol. 105, no. 4-5, pp. 423–438, 1998.
- [59] E. J. Rivera, A. Goldin, N. Fulmer, R. Tavares, J. R. Wands, and S. M. De La Monte, "Insulin and insulin-like growth factor expression and function deteriorate with progression of Alzheimer's disease: link to brain reductions in acetylcholine," *Journal of Alzheimer's Disease*, vol. 8, no. 3, pp. 247–268, 2005.
- [60] E. Steen, B. M. Terry, E. J. Rivera et al., "Impaired insulin and insulin-like growth factor expression and signaling mechanisms in Alzheimer's disease—is this type 3 diabetes?" *Journal of Alzheimer's Disease*, vol. 7, no. 1, pp. 63–80, 2005.
- [61] X. Ling, R. N. Martins, M. Racchi, S. Craft, and E. Helmerhorst, "Amyloid beta antagonizes insulin promoted secretion of the amyloid beta protein precursor," *Journal of Alzheimer's Disease*, vol. 4, no. 5, pp. 369–374, 2002.
- [62] W.-Q. Zhao, F. G. De Felice, S. Fernandez et al., "Amyloid beta oligomers induce impairment of neuronal insulin receptors," *The FASEB Journal*, vol. 22, no. 1, pp. 246–260, 2008.
- [63] F. G. De Felice, M. N. N. Vieira, T. R. Bomfim et al., "Protection of synapses against Alzheimer's-linked toxins: insulin signaling prevents the pathogenic binding of A β oligomers," *Proceedings of the National Academy of Sciences of the United States of America*, vol. 106, no. 6, pp. 1971–1976, 2009.
- [64] A. M. Moloney, R. J. Griffin, S. Timmons, R. O'Connor, R. Ravid, and C. O'Neill, "Defects in IGF-1 receptor, insulin receptor and IRS-1/2 in Alzheimer's disease indicate possible resistance to IGF-1 and insulin signalling," *Neurobiology of Aging*, vol. 31, no. 2, pp. 224–243, 2010.
- [65] Q.-L. Ma, F. Yang, E. R. Rosario et al., "Beta-amyloid oligomers induce phosphorylation of tau and inactivation of insulin receptor substrate via c-Jun N-terminal kinase signaling: suppression by omega-3 fatty acids and curcumin," *The Journal of Neuroscience*, vol. 29, no. 28, pp. 9078–9089, 2009.
- [66] S. Boura-Halfon and Y. Zick, "Phosphorylation of IRS proteins, insulin action, and insulin resistance," *American Journal of Physiology—Endocrinology and Metabolism*, vol. 296, no. 4, pp. E581–E591, 2009.
- [67] B. W. Doble and J. R. Woodgett, "GSK-3: tricks of the trade for a multi-tasking kinase," *Journal of Cell Science*, vol. 116, part 7, pp. 1175–1186, 2003.
- [68] C. O'Neill, A. P. Kiely, M. F. Coakley, S. Manning, and C. M. Long-Smith, "Insulin and IGF-1 signalling: longevity, protein homeostasis and Alzheimer's disease," *Biochemical Society Transactions*, vol. 40, no. 4, pp. 721–727, 2012.
- [69] V. Lahmy, J. Meunier, S. Malmström et al., "Blockade of tau hyperphosphorylation and A β _{1–42} generation by the aminotetrahydrofuran derivative ANAVEX2-73, a mixed muscarinic and σ ₁ receptor agonist, in a nontransgenic mouse model of Alzheimer's disease," *Neuropsychopharmacology*, vol. 38, no. 9, pp. 1706–1723, 2013.
- [70] R. Bhat, Y. Xue, S. Berg et al., "Structural insights and biological effects of glycogen synthase kinase 3-specific inhibitor AR-A014418," *The Journal of Biological Chemistry*, vol. 278, no. 46, pp. 45937–45945, 2003.
- [71] A. Tramutola, J. C. Triplett, F. Di Domenico et al., "Alteration of mTOR signaling occurs early in the progression of Alzheimer disease (AD): analysis of brain from subjects with pre-clinical AD, amnesic mild cognitive impairment and late-stage AD," *Journal of Neurochemistry*, vol. 133, no. 5, pp. 739–749, 2015.
- [72] R. J. Griffin, A. Moloney, M. Kelliher et al., "Activation of Akt/PKB, increased phosphorylation of Akt substrates and loss and altered distribution of Akt and PTEN are features of Alzheimer's disease pathology," *Journal of Neurochemistry*, vol. 93, no. 1, pp. 105–117, 2005.
- [73] M. Hong and V. M.-Y. Lee, "Insulin and insulin-like growth factor-1 regulate tau phosphorylation in cultured human neurons," *Journal of Biological Chemistry*, vol. 272, no. 31, pp. 19547–19553, 1997.
- [74] L. Baki, J. Shioi, P. Wen et al., "PS1 activates PI3K thus inhibiting GSK-3 activity and tau overphosphorylation: effects of FAD mutations," *The EMBO Journal*, vol. 23, no. 13, pp. 2586–2596, 2004.
- [75] S. Lovestone, M. Boada, B. Dubois et al., "A phase II trial of tideglusib in Alzheimer's disease," *Journal of Alzheimer's Disease*, vol. 45, no. 1, pp. 75–88, 2015.
- [76] M. S. H. Akash, K. Rehman, and S. Chen, "Role of inflammatory mechanisms in pathogenesis of type 2 diabetes mellitus," *Journal of Cellular Biochemistry*, vol. 114, no. 3, pp. 525–531, 2013.
- [77] M. A. Erickson, K. Hansen, and W. A. Banks, "Inflammation-induced dysfunction of the low-density lipoprotein receptor-related protein-1 at the blood-brain barrier: protection by the antioxidant N-acetylcysteine," *Brain, Behavior, and Immunity*, vol. 26, no. 7, pp. 1085–1094, 2012.
- [78] P. B. Rosenberg, "Clinical aspects of inflammation in Alzheimer's disease," *International Review of Psychiatry*, vol. 17, no. 6, pp. 503–514, 2005.
- [79] J. Hirosumi, G. Tuncman, L. Chang et al., "A central role for JNK in obesity and insulin resistance," *Nature*, vol. 420, no. 6913, pp. 333–336, 2002.
- [80] E. C. W. van Straaten, D. Harvey, P. Scheltens et al., "Periventricular white matter hyperintensities increase the likelihood of progression from amnesic mild cognitive impairment to dementia," *Journal of Neurology*, vol. 255, no. 9, pp. 1302–1308, 2008.
- [81] C. Matrone, M. Djelloul, G. Tagliatela, and L. Perrone, "Inflammatory risk factors and pathologies promoting

- Alzheimer's disease progression: is RAGE the key?" *Histology and Histopathology*, vol. 30, no. 2, pp. 125–139, 2015.
- [82] G. Münch, R. Schinzel, C. Loske et al., "Alzheimer's disease—synergistic effects of glucose deficit, oxidative stress and advanced glycation endproducts," *Journal of Neural Transmission*, vol. 105, no. 4–5, pp. 439–461, 1998.
- [83] R. Deane, S. D. Yan, R. K. Subramanyam et al., "RAGE mediates amyloid- β peptide transport across the blood-brain barrier and accumulation in brain," *Nature Medicine*, vol. 9, no. 7, pp. 907–913, 2003.
- [84] M. Hartlage-Rübsamen, U. Zeitschel, J. Apelt et al., "Astrocytic expression of the Alzheimer's disease beta-secretase (BACE1) is stimulus-dependent," *Glia*, vol. 41, no. 2, pp. 169–179, 2003.
- [85] K. Z. Bourne, D. C. Ferrari, C. Lange-Dohna, S. Roßner, T. G. Wood, and J. R. Perez-Polo, "Differential regulation of BACE1 promoter activity by nuclear factor-kappaB in neurons and glia upon exposure to beta-amyloid peptides," *Journal of Neuroscience Research*, vol. 85, no. 6, pp. 1194–1204, 2007.
- [86] D. Paris et al., "Inhibition of A β production by NF- κ B inhibitors," *Neuroscience Letters*, vol. 415, no. 1, pp. 11–16, 2007.
- [87] H. J. Cho, S. M. Son, S. M. Jin et al., "RAGE regulates BACE1 and A β generation via NFAT1 activation in Alzheimer's disease animal model," *The FASEB Journal*, vol. 23, no. 8, pp. 2639–2649, 2009.
- [88] U. Özcan, Q. Cao, E. Yilmaz et al., "Endoplasmic reticulum stress links obesity, insulin action, and type 2 diabetes," *Science*, vol. 306, no. 5695, pp. 457–461, 2004.
- [89] G. S. Hotamisligil, "Endoplasmic reticulum stress and the inflammatory basis of metabolic disease," *Cell*, vol. 140, no. 6, pp. 900–917, 2010.
- [90] T. Nakamura, M. Furuhashi, P. Li et al., "Double-stranded RNA-dependent protein kinase links pathogen sensing with stress and metabolic homeostasis," *Cell*, vol. 140, no. 3, pp. 338–348, 2010.
- [91] F. Mouton-Liger, C. Paquet, J. Dumurgier et al., "Increased cerebrospinal fluid levels of double-stranded RNA-dependant protein kinase in Alzheimer's disease," *Biological Psychiatry*, vol. 71, no. 9, pp. 829–835, 2012.
- [92] J. Dumurgier, F. Mouton-Liger, P. Lapalus et al., "Cerebrospinal fluid PKR level predicts cognitive decline in Alzheimer's disease," *PLoS ONE*, vol. 8, no. 1, Article ID e53587, 2013.
- [93] A. Carret-Rebillat, C. Pace, S. Gourmaud et al., "Neuroinflammation and A β accumulation linked to systemic inflammation are decreased by genetic PKR down-regulation," *Scientific Reports*, vol. 5, article 8489, 2015.
- [94] M. V. Lourenco, J. R. Clarke, R. L. Frozza et al., "TNF- α mediates PKR-dependent memory impairment and brain IRS-1 inhibition induced by Alzheimer's β -amyloid oligomers in mice and monkeys," *Cell Metabolism*, vol. 18, no. 6, pp. 831–843, 2013.
- [95] M. C. Bonnet, R. Weil, E. Dam, A. G. Hovanessian, and E. F. Meurs, "PKR stimulates NF- κ B irrespective of its kinase function by interacting with the I κ B kinase complex," *Molecular and Cellular Biology*, vol. 20, no. 13, pp. 4532–4542, 2000.
- [96] B. Lu, T. Nakamura, K. Inouye et al., "Novel role of PKR in inflammasome activation and HMGB1 release," *Nature*, vol. 488, no. 7413, pp. 670–674, 2012.
- [97] M. V. Lourenco, S. T. Ferreira, and F. G. De Felice, "Neuronal stress signaling and eIF2 α phosphorylation as molecular links between Alzheimer's disease and diabetes," *Progress in Neurobiology*, vol. 129, pp. 37–57, 2015.
- [98] J. J. M. Hoozemans, E. S. Van Haastert, D. A. T. Nijholt, A. J. M. Rozemuller, P. Eikelenboom, and W. Scheper, "The unfolded protein response is activated in pretangle neurons in Alzheimer's disease hippocampus," *The American Journal of Pathology*, vol. 174, no. 4, pp. 1241–1251, 2009.
- [99] J. J. M. Hoozemans, R. Veerhuis, E. S. Van Haastert et al., "The unfolded protein response is activated in Alzheimer's disease," *Acta Neuropathologica*, vol. 110, no. 2, pp. 165–172, 2005.
- [100] M. J. Bullido, A. Martínez-García, R. Tenorio et al., "Double stranded RNA activated EIF2 α kinase (EIF2AK2; PKR) is associated with Alzheimer's disease," *Neurobiology of Aging*, vol. 29, no. 8, pp. 1160–1166, 2008.
- [101] S. O. Yoon, D. J. Park, J. C. Ryu et al., "JNK3 perpetuates metabolic stress induced by A β peptides," *Neuron*, vol. 75, no. 5, pp. 824–837, 2012.
- [102] J. Baleriola, C. A. Walker, Y. Y. Jean et al., "Axonally synthesized ATF4 transmits a neurodegenerative signal across brain regions," *Cell*, vol. 158, no. 5, pp. 1159–1172, 2014.
- [103] T. O'Connor, "Phosphorylation of the translation initiation factor eIF2 α increases BACE1 levels and promotes amyloidogenesis," *Neuron*, vol. 60, no. 6, pp. 988–1009, 2008.
- [104] T. Ma, M. A. Trinh, A. J. Wexler et al., "Suppression of eIF2 α kinases alleviates Alzheimer's disease-related plasticity and memory deficits," *Nature Neuroscience*, vol. 16, no. 9, pp. 1299–1305, 2013.
- [105] M. A. Pappolla, T. K. Bryant-Thomas, D. Herbert et al., "Mild hypercholesterolemia is an early risk factor for the development of Alzheimer amyloid pathology," *Neurology*, vol. 61, no. 2, pp. 199–205, 2003.
- [106] L. Ho, W. Qin, P. N. Pompl et al., "Diet-induced insulin resistance promotes amyloidosis in a transgenic mouse model of Alzheimer's disease," *The FASEB Journal*, vol. 18, no. 7, pp. 902–904, 2004.
- [107] M. Vandal, P. J. White, C. Tremblay et al., "Insulin reverses the high-fat diet-induced increase in brain A β and improves memory in an animal model of Alzheimer disease," *Diabetes*, vol. 63, no. 12, pp. 4291–4301, 2014.
- [108] S. M. Son, H. Song, J. Byun et al., "Accumulation of autophagosomes contributes to enhanced amyloidogenic APP processing under insulin-resistant conditions," *Autophagy*, vol. 8, no. 12, pp. 1842–1844, 2012.
- [109] S. L. Macauley, M. Stanley, E. E. Caesar et al., "Hyperglycemia modulates extracellular amyloid- β concentrations and neuronal activity in vivo," *The Journal of Clinical Investigation*, vol. 125, no. 6, pp. 2463–2467, 2015.
- [110] J. Miklossy, H. Qing, A. Radenovic et al., "Beta amyloid and hyperphosphorylated tau deposits in the pancreas in type 2 diabetes," *Neurobiology of Aging*, vol. 31, no. 9, pp. 1503–1515, 2010.
- [111] Y. Zhang, B. Zhou, B. Deng et al., "Amyloid- β induces hepatic insulin resistance in vivo via JAK2," *Diabetes*, vol. 62, no. 4, pp. 1159–1166, 2013.
- [112] W. H. Yu, A. M. Cuervo, A. Kumar et al., "Macroautophagy—a novel beta-amyloid peptide-generating pathway activated in Alzheimer's disease," *The Journal of Cell Biology*, vol. 171, no. 1, pp. 87–98, 2005.

- [113] K. A. Bates, G. Verdile, Q.-X. Li et al., "Clearance mechanisms of Alzheimer's amyloid- β peptide: implications for therapeutic design and diagnostic tests," *Molecular Psychiatry*, vol. 14, no. 5, pp. 469–486, 2009.
- [114] L. Morelli, R. E. Llovera, I. Mathov et al., "Insulin-degrading enzyme in brain microvessels: proteolysis of amyloid β vasculotropic variants and reduced activity in cerebral amyloid angiopathy," *The Journal of Biological Chemistry*, vol. 279, no. 53, pp. 56004–56013, 2004.
- [115] H.-G. Bernstein, S. Ansorge, P. Riederer, M. Reiser, L. Frölich, and B. Bogerts, "Insulin-degrading enzyme in the Alzheimer's disease brain: prominent localization in neurons and senile plaques," *Neuroscience Letters*, vol. 263, no. 2-3, pp. 161–164, 1999.
- [116] M. A. Leissring, W. Farris, A. Y. Chang et al., "Enhanced proteolysis of β -amyloid in APP transgenic mice prevents plaque formation, secondary pathology, and premature death," *Neuron*, vol. 40, no. 6, pp. 1087–1093, 2003.
- [117] W. Farris, S. Mansourian, Y. Chang et al., "Insulin-degrading enzyme regulates the levels of insulin, amyloid β -protein, and the β -amyloid precursor protein intracellular domain in vivo," *Proceedings of the National Academy of Sciences of the United States of America*, vol. 100, no. 7, pp. 4162–4167, 2003.
- [118] B. C. Miller, E. A. Eckman, K. Sambamurti et al., "Amyloid- β peptide levels in brain are inversely correlated with insulysin activity levels in vivo," *Proceedings of the National Academy of Sciences of the United States of America*, vol. 100, no. 10, pp. 6221–6226, 2003.
- [119] W. Q. Qiu, D. M. Walsh, Z. Ye et al., "Insulin-degrading enzyme regulates extracellular levels of amyloid β -protein by degradation," *The Journal of Biological Chemistry*, vol. 273, no. 49, pp. 32730–32738, 1998.
- [120] J. J. Kulstad, P. S. Green, D. G. Cook et al., "Differential modulation of plasma β -amyloid by insulin in patients with Alzheimer disease," *Neurology*, vol. 66, no. 10, pp. 1506–1510, 2006.
- [121] M. Kim, L. B. Hersh, M. A. Leissring et al., "Decreased catalytic activity of the insulin-degrading enzyme in chromosome 10-linked Alzheimer disease families," *The Journal of Biological Chemistry*, vol. 282, no. 11, pp. 7825–7832, 2007.
- [122] Z. Zhao, Z. Xiang, V. Haroutunian, J. D. Buxbaum, B. Stetka, and G. M. Pasinetti, "Insulin degrading enzyme activity selectively decreases in the hippocampal formation of cases at high risk to develop Alzheimer's disease," *Neurobiology of Aging*, vol. 28, no. 6, pp. 824–830, 2007.
- [123] M. Vandal, W. Alata, C. Tremblay et al., "Reduction in DHA transport to the brain of mice expressing human APOE4 compared to APOE2," *Journal of Neurochemistry*, vol. 129, no. 3, pp. 516–526, 2014.
- [124] L. J. Launer, M. E. Miller, J. D. Williamson et al., "Effects of intensive glucose lowering on brain structure and function in people with type 2 diabetes (ACCORD MIND): a randomised open-label substudy," *The Lancet Neurology*, vol. 10, no. 11, pp. 969–977, 2011.
- [125] P. Newsholme, D. Morgan, E. Rebelato et al., "Insights into the critical role of NADPH oxidase(s) in the normal and dysregulated pancreatic beta cell," *Diabetologia*, vol. 52, no. 12, pp. 2489–2498, 2009.
- [126] P. Newsholme, E. Rebelato, F. Abdulkader, M. Krause, A. Carpinelli, and R. Curi, "Reactive oxygen and nitrogen species generation, antioxidant defenses, and β -cell function: a critical role for amino acids," *Journal of Endocrinology*, vol. 214, no. 1, pp. 11–20, 2012.
- [127] J. P. Gray and E. Heart, "Usurping the mitochondrial supremacy: extramitochondrial sources of reactive oxygen intermediates and their role in beta cell metabolism and insulin secretion," *Toxicology Mechanisms and Methods*, vol. 20, no. 4, pp. 167–174, 2010.
- [128] S. Rosales-Corral, D. X. Tan, L. Manchester, and R. J. Reiter, "Diabetes and Alzheimer disease, two overlapping pathologies with the same background: oxidative stress," *Oxidative Medicine and Cellular Longevity*, vol. 2015, Article ID 985845, 14 pages, 2015.
- [129] G. De Luca, P. R. Calpona, A. Caponetti et al., "Preliminary report: amino acid profile in platelets of diabetic patients," *Metabolism*, vol. 50, no. 7, pp. 739–741, 2001.
- [130] D. O. Cristalli, N. Arnal, F. A. Marra, M. J. T. De Alaniz, and C. A. Marra, "Peripheral markers in neurodegenerative patients and their first-degree relatives," *Journal of the Neurological Sciences*, vol. 314, no. 1-2, pp. 48–56, 2012.
- [131] A. McCaddon, P. Hudson, D. Hill et al., "Alzheimer's disease and total plasma aminothiols," *Biological Psychiatry*, vol. 53, no. 3, pp. 254–260, 2003.
- [132] S. Saharan and P. K. Mandal, "The emerging role of glutathione in Alzheimer's disease," *Journal of Alzheimer's Disease*, vol. 40, no. 3, pp. 519–529, 2014.
- [133] J. I. Malone, S. Hanna, S. Saporta et al., "Hyperglycemia not hypoglycemia alters neuronal dendrites and impairs spatial memory," *Pediatric Diabetes*, vol. 9, no. 6, pp. 531–539, 2008.
- [134] G. Martini and M. V. Ursini, "A new lease of life for an old enzyme," *BioEssays*, vol. 18, no. 8, pp. 631–637, 1996.
- [135] P. P. Pandolfi, F. Sonati, R. Rivi, P. Mason, F. Grosveld, and L. Luzzatto, "Targeted disruption of the housekeeping gene encoding glucose 6-phosphate dehydrogenase (G6PD): G6PD is dispensable for pentose synthesis but essential for defense against oxidative stress," *The EMBO Journal*, vol. 14, no. 21, pp. 5209–5215, 1995.
- [136] M. Rosenstraus and L. A. Chasin, "Isolation of mammalian cell mutants deficient in glucose-6-phosphate dehydrogenase activity: linkage to hypoxanthine phosphoribosyl transferase," *Proceedings of the National Academy of Sciences of the United States of America*, vol. 72, no. 2, pp. 493–497, 1975.
- [137] Y. Xu, B. W. Osborne, and R. C. Stanton, "Diabetes causes inhibition of glucose-6-phosphate dehydrogenase via activation of PKA, which contributes to oxidative stress in rat kidney cortex," *The American Journal of Physiology—Renal Physiology*, vol. 289, no. 5, pp. F1040–F1047, 2005.
- [138] G. A. Jicha, C. Weaver, E. Lane et al., "cAMP-dependent protein kinase phosphorylations on Tau in Alzheimer's disease," *Journal of Neuroscience*, vol. 19, no. 17, pp. 7486–7494, 1999.
- [139] Q. Tian, J.-X. Zhang, Y. Zhang et al., "Biphasic effects of forskolin on tau phosphorylation and spatial memory in rats," *Journal of Alzheimer's Disease*, vol. 17, no. 3, pp. 631–642, 2009.
- [140] O. V. Vitolo, A. Sant'Angelo, V. Costanzo, F. Battaglia, O. Arancio, and M. Shelanski, "Amyloid β -peptide inhibition of the PKA/CREB pathway and long-term potentiation: reversibility by drugs that enhance cAMP signaling," *Proceedings of the National Academy of Sciences of the United States of America*, vol. 99, no. 20, pp. 13217–13221, 2002.

- [141] I. S. Övey and M. Naziroğlu, "Homocysteine and cytosolic GSH depletion induce apoptosis and oxidative toxicity through cytosolic calcium overload in the hippocampus of aged mice: involvement of TRPM2 and TRPV1 channels," *Neuroscience*, vol. 284, pp. 225–233, 2015.
- [142] I. S. Kil, J. H. Lee, A. H. Shin, and J.-W. Park, "Glycation-induced inactivation of NADP⁺-dependent isocitrate dehydrogenase: implications for diabetes and aging," *Free Radical Biology and Medicine*, vol. 37, no. 11, pp. 1765–1778, 2004.
- [143] S.-H. Jo, M.-K. Son, H.-J. Koh et al., "Control of mitochondrial redox balance and cellular defense against oxidative damage by mitochondrial NADP⁺-dependent isocitrate dehydrogenase," *Journal of Biological Chemistry*, vol. 276, no. 19, pp. 16168–16176, 2001.
- [144] W. O. Nagel, R. T. Dauchy, and L. A. Sauer, "Mitochondrial malic enzymes. An association between NAD(P)⁺-dependent malic enzyme and cell renewal in Sprague-Dawley rat tissues," *Journal of Biological Chemistry*, vol. 255, no. 9, pp. 3849–3854, 1980.
- [145] G. M. Kurz, H. Wiesinger, and B. Hamprecht, "Purification of cytosolic malic enzyme from bovine brain, generation of monoclonal antibodies, and immunocytochemical localization of the enzyme in glial cells of neural primary cultures," *Journal of Neurochemistry*, vol. 60, no. 4, pp. 1467–1474, 1993.
- [146] R. Vogel, B. Hamprecht, and H. Wiesinger, "Malic enzyme isoforms in astrocytes: comparative study on activities in rat brain tissue and astroglia-rich primary cultures," *Neuroscience Letters*, vol. 247, no. 2-3, pp. 123–126, 1998.
- [147] F. Belfiore, A. M. Rabuazzo, E. Napoli, V. Borzi, and L. Lo Vecchio, "Enzymes of glucose metabolism and of the citrate cleavage pathway in adipose tissue of normal and diabetic subjects," *Diabetes*, vol. 24, no. 10, pp. 865–873, 1975.
- [148] M. J. MacDonald, M. J. Longacre, E.-C. Langberg et al., "Decreased levels of metabolic enzymes in pancreatic islets of patients with type 2 diabetes," *Diabetologia*, vol. 52, no. 6, pp. 1087–1091, 2009.
- [149] A. Lippoldt, C. A. Padilla, H. Gerst et al., "Localization of thioredoxin in the rat brain and functional implications," *Journal of Neuroscience*, vol. 15, no. 10, pp. 6747–6756, 1995.
- [150] A. H. Minn, C. Hafele, and A. Shalev, "Thioredoxin-interacting protein is stimulated by glucose through a carbohydrate response element and induces β -cell apoptosis," *Endocrinology*, vol. 146, no. 5, pp. 2397–2405, 2005.
- [151] J. Chen, G. Saxena, I. N. Mungrue, A. J. Lusic, and A. Shalev, "Thioredoxin-interacting protein: a critical link between glucose toxicity and beta-cell apoptosis," *Diabetes*, vol. 57, no. 4, pp. 938–944, 2008.
- [152] I. N. Mohamed, S. S. Hafez, A. Fairaq, A. Ergul, J. D. Imig, and A. B. El-Remessy, "Thioredoxin-interacting protein is required for endothelial NLRP3 inflammasome activation and cell death in a rat model of high-fat diet," *Diabetologia*, vol. 57, no. 2, pp. 413–423, 2014.
- [153] G. S. Kim, J. E. Jung, P. Narasimhan, H. Sakata, and P. H. Chan, "Induction of thioredoxin-interacting protein is mediated by oxidative stress, calcium, and glucose after brain injury in mice," *Neurobiology of Disease*, vol. 46, no. 2, pp. 440–449, 2012.
- [154] A. G. Lerner, J.-P. Upton, P. V. K. Praveen et al., "IRE1 α induces thioredoxin-interacting protein to activate the NLRP3 inflammasome and promote programmed cell death under irremediable ER stress," *Cell Metabolism*, vol. 16, no. 2, pp. 250–264, 2012.
- [155] T. Gouget, M. Djelloul, J. Boucraut et al., "TXNIP, the major player in insulin resistance, is early over-expressed in the brain of the 5XFAD Alzheimer's mice model and is induced by $A\beta$ in vitro: emerging role of TXNIP and inflammation in Alzheimer's Disease progression," *Alzheimer's & Dementia*, vol. 7, no. 4, article S684, 2011.
- [156] S. Schoonbroodt and J. Piette, "Oxidative stress interference with the nuclear factor- κ B activation pathways," *Biochemical Pharmacology*, vol. 60, no. 8, pp. 1075–1083, 2000.
- [157] W. Gehrman, M. Elsner, and S. Lenzen, "Role of metabolically generated reactive oxygen species for lipotoxicity in pancreatic β -cells," *Diabetes, Obesity and Metabolism*, vol. 12, no. 2, pp. 149–158, 2010.
- [158] Y. Kajimoto and H. Kaneto, "Role of oxidative stress in pancreatic beta-cell dysfunction," *Annals of the New York Academy of Sciences*, vol. 1011, pp. 168–176, 2004.
- [159] M. A. Rizzo and D. W. Piston, "Regulation of β cell glucokinase by S-nitrosylation and association with nitric oxide synthase," *The Journal of Cell Biology*, vol. 161, no. 2, pp. 243–248, 2003.
- [160] D. A. Wiseman, M. A. Kalwat, and D. C. Thurmond, "Stimulus-induced S-nitrosylation of syntaxin 4 impacts insulin granule exocytosis," *The Journal of Biological Chemistry*, vol. 286, no. 18, pp. 16344–16354, 2011.
- [161] C. Leloup, C. Tourrel-Cuzin, C. Magnan et al., "Mitochondrial reactive oxygen species are obligatory signals for glucose-induced insulin secretion," *Diabetes*, vol. 58, no. 3, pp. 673–681, 2009.
- [162] J. Jacobson and M. R. Duchon, "Interplay between mitochondria and cellular calcium signalling," *Molecular and Cellular Biochemistry*, vol. 256–257, no. 1-2, pp. 209–218, 2004.
- [163] V. F. Cruzat, A. Bittencourt, S. P. Scomazzon, J. S. M. Leite, P. I. H. De Bittencourt, and J. Tirapegui, "Oral free and dipeptide forms of glutamine supplementation attenuate oxidative stress and inflammation induced by endotoxemia," *Nutrition*, vol. 30, no. 5, pp. 602–611, 2014.
- [164] B. A. Menge, H. Schrader, P. R. Ritter et al., "Selective amino acid deficiency in patients with impaired glucose tolerance and type 2 diabetes," *Regulatory Peptides*, vol. 160, no. 1-3, pp. 75–80, 2010.
- [165] V. F. Cruzat, L. C. Pantaleão, J. Donato, P. I. H. de Bittencourt, and J. Tirapegui, "Oral supplementations with free and dipeptide forms of l-glutamine in endotoxemic mice: effects on muscle glutamine-glutathione axis and heat shock proteins," *The Journal of Nutritional Biochemistry*, vol. 25, no. 3, pp. 345–352, 2014.
- [166] M. Krause, K. Keane, J. Rodrigues-Krause et al., "Elevated levels of extracellular heat-shock protein 72 (eHSP72) are positively correlated with insulin resistance *in vivo* and cause pancreatic β -cell dysfunction and death *in vitro*," *Clinical Science*, vol. 126, no. 10, pp. 739–752, 2014.
- [167] P. Newsholme and M. Krause, "Diet, obesity, and reactive oxygen species—implications for diabetes and aging," in *Systems Biology of Free Radicals and Antioxidants*, I. Laher, Ed., pp. 3361–3374, Springer, Berlin, Germany, 2014.
- [168] T. Fujita, K. Toda, A. Karimova et al., "Paradoxical rescue from ischemic lung injury by inhaled carbon monoxide driven by derepression of fibrinolysis," *Nature Medicine*, vol. 7, no. 5, pp. 598–604, 2001.

- [169] E. Barone, F. Di Domenico, C. Mancuso, and D. A. Butterfield, "The Janus face of the heme oxygenase/biliverdin reductase system in Alzheimer disease: it's time for reconciliation," *Neurobiology of Disease*, vol. 62, pp. 144–159, 2014.
- [170] C. Mancuso and E. Barone, "The heme oxygenase/biliverdin reductase pathway in drug research and development," *Current Drug Metabolism*, vol. 10, no. 6, pp. 579–594, 2009.
- [171] C. Mancuso, E. Barone, P. Guido et al., "Inhibition of lipid peroxidation and protein oxidation by endogenous and exogenous antioxidants in rat brain microsomes in vitro," *Neuroscience Letters*, vol. 518, no. 2, pp. 101–105, 2012.
- [172] V. Calabrese, R. Sultana, G. Scapagnini et al., "Nitrosative stress, cellular stress response, and thiol homeostasis in patients with Alzheimer's disease," *Antioxidants and Redox Signaling*, vol. 8, no. 11–12, pp. 1975–1986, 2006.
- [173] Á. Casado, M. E. López-Fernández, M. C. Casado, and R. de La Torre, "Lipid peroxidation and antioxidant enzyme activities in vascular and Alzheimer dementias," *Neurochemical Research*, vol. 33, no. 3, pp. 450–458, 2008.
- [174] T. Kimpara, A. Takeda, T. Yamaguchi et al., "Increased bilirubins and their derivatives in cerebrospinal fluid in Alzheimer's disease," *Neurobiology of Aging*, vol. 21, no. 4, pp. 551–554, 2000.
- [175] E. Barone and D. A. Butterfield, "Insulin resistance in Alzheimer disease: is heme oxygenase-1 an Achilles's heel?" *Neurobiology of Disease*, 2015.
- [176] H. S. Sharma, F. Nyberg, T. Gordh, P. Alm, and J. Westman, "Neurotrophic factors influence upregulation of constitutive isoform of heme oxygenase and cellular stress response in the spinal cord following trauma: an experimental study using immunohistochemistry in the rat," *Amino Acids*, vol. 19, no. 1, pp. 351–361, 2000.
- [177] Y.-Y. Hsu, C.-S. Chen, S.-N. Wu, Y.-J. Jong, and Y.-C. Lo, "Berberine activates Nrf2 nuclear translocation and protects against oxidative damage via a phosphatidylinositol 3-kinase/Akt-dependent mechanism in NSC34 motor neuron-like cells," *European Journal of Pharmaceutical Sciences*, vol. 46, no. 5, pp. 415–425, 2012.
- [178] A. Jais, E. Einwallner, O. Sharif et al., "Heme oxygenase-1 drives metaflammation and insulin resistance in mouse and man," *Cell*, vol. 158, no. 1, pp. 25–40, 2014.
- [179] R. N. Martins, C. G. Harper, G. B. Stokes, and C. L. Masters, "Increased cerebral glucose-6-phosphate dehydrogenase activity in Alzheimer's disease may reflect oxidative stress," *Journal of Neurochemistry*, vol. 46, no. 4, pp. 1042–1045, 1986.
- [180] D. A. Butterfield, H. F. Poon, D. St. Clair et al., "Redox proteomics identification of oxidatively modified hippocampal proteins in mild cognitive impairment: insights into the development of Alzheimer's disease," *Neurobiology of Disease*, vol. 22, no. 2, pp. 223–232, 2006.
- [181] C. D. Aluise, R. A. S. Robinson, J. Cai, W. M. Pierce, W. R. Markesbery, and D. A. Butterfield, "Redox proteomics analysis of brains from subjects with amnesic mild cognitive impairment compared to brains from subjects with preclinical Alzheimer's disease: insights into memory loss in MCI," *Journal of Alzheimer's Disease*, vol. 23, no. 2, pp. 257–269, 2011.
- [182] M. Zamora and J. A. Villena, "Targeting mitochondrial biogenesis to treat insulin resistance," *Current Pharmaceutical Design*, vol. 20, no. 35, pp. 5527–5557, 2014.
- [183] J. Yao, R. W. Irwin, L. Zhao, J. Nilsen, R. T. Hamilton, and R. D. Brinton, "Mitochondrial bioenergetic deficit precedes Alzheimer's pathology in female mouse model of Alzheimer's disease," *Proceedings of the National Academy of Sciences of the United States of America*, vol. 106, no. 34, pp. 14670–14675, 2009.
- [184] P. H. Reddy, R. Tripathi, Q. Troung et al., "Abnormal mitochondrial dynamics and synaptic degeneration as early events in Alzheimer's disease: implications to mitochondria-targeted antioxidant therapeutics," *Biochimica et Biophysica Acta—Molecular Basis of Disease*, vol. 1822, no. 5, pp. 639–649, 2012.
- [185] F. G. De Felice and S. T. Ferreira, "Inflammation, defective insulin signaling, and mitochondrial dysfunction as common molecular denominators connecting type 2 diabetes to Alzheimer Disease," *Diabetes*, vol. 63, no. 7, pp. 2262–2272, 2014.
- [186] F. Yin, T. Jiang, and E. Cadenas, "Metabolic triad in brain aging: mitochondria, insulin/IGF-1 signalling and JNK signalling," *Biochemical Society Transactions*, vol. 41, no. 1, pp. 101–105, 2013.
- [187] S. C. Correia, R. X. Santos, M. S. Santos et al., "Mitochondrial abnormalities in a streptozotocin-induced rat model of sporadic Alzheimer's disease," *Current Alzheimer Research*, vol. 10, no. 4, pp. 406–419, 2013.
- [188] J. R. Clarke, N. M. Lyra e Silva, C. P. Figueiredo et al., "Alzheimer-associated A β oligomers impact the central nervous system to induce peripheral metabolic deregulation," *EMBO Molecular Medicine*, vol. 7, no. 2, pp. 190–210, 2015.
- [189] J. P. Thaler, C.-X. Yi, E. A. Schur et al., "Obesity is associated with hypothalamic injury in rodents and humans," *The Journal of Clinical Investigation*, vol. 122, no. 1, pp. 153–162, 2012.
- [190] J. Benzler, G. K. Ganjam, M. Krüger et al., "Hypothalamic glycogen synthase kinase 3 β has a central role in the regulation of food intake and glucose metabolism," *Biochemical Journal*, vol. 447, no. 1, pp. 175–184, 2012.



Hindawi
Submit your manuscripts at
<http://www.hindawi.com>

