

Edith Cowan University
Research Online

ECU Publications Post 2013

2015

The effect of multidisciplinary rehabilitation on brain structure and cognition in Huntington's disease: An exploratory study

Travis M. Cruickshank
Edith Cowan University

Jennifer A. Thompson
Edith Cowan University

Juan F. Dominguez D

Alvaro P. Reyes
Edith Cowan University

Mike Bynevelt

See next page for additional authors

Follow this and additional works at: <https://ro.ecu.edu.au/ecuworkspost2013>

 Part of the [Other Rehabilitation and Therapy Commons](#), and the [Psychiatry Commons](#)

10.1002/brb3.312

Cruickshank, T.M., Thompson, J.A., Domínguez D, J.F., Reyes, A.P., Bynevelt, M., Georgiou-Karistianis, N., Barker, R.A., Ziman, M.R. (2015). The effect of multidisciplinary rehabilitation on brain structure and cognition in Huntington's disease: An exploratory study in *Brain and Behavior*, 5(2), 1-10. Available [here](#).

This Journal Article is posted at Research Online.

<https://ro.ecu.edu.au/ecuworkspost2013/1224>

Authors

Travis M. Cruickshank, Jennifer A. Thompson, Juan F. Dominguez D, Alvaro P. Reyes, Mike Bynevelt, Nellie Georgiou-Karistianis, Roger A. Barker, and Mel R. Ziman

The effect of multidisciplinary rehabilitation on brain structure and cognition in Huntington's disease: an exploratory study

Travis M. Cruickshank^{1,*}, Jennifer A. Thompson^{1,*}, Juan F. Domínguez D², Alvaro P. Reyes¹, Mike Bynevelt³, Nellie Georgiou-Karistianis², Roger A. Barker⁴ & Mel R. Ziman^{1,5}

¹School of Medical Sciences, Edith Cowan University, Perth, Western Australia, Australia

²School of Psychological Sciences, Monash University, Melbourne, Victoria, Australia

³Department of Surgery, UWA and Neurological Intervention and Imaging Service of Western Australia, Perth, Western Australia, Australia

⁴John van Geest Centre for Brain Repair, Cambridge, U.K.

⁵School of Pathology and Laboratory Medicine, University of Western Australia, Perth, Western Australia, Australia

Keywords

Cognition, executive function, Huntington's disease, neuropathology, rehabilitation.

Correspondence

Travis Cruickshank, School of Medical Sciences, Edith Cowan University, 270 Joondalup Drive, Joondalup, Australia. Tel: (+61 8) 6304 3416; Fax: (+61 8) 6304 2626; E-mail: t.cruickshank@ecu.edu.au

Funding Information

This work was supported by Lotterywest (grant number 107/20090827).

*Authors contributed equally to the manuscript.

Received: 29 May 2014; Revised: 5 December 2014; Accepted: 8 December 2014

Brain and Behavior, 2015; 5(2), e00312, doi: 10.1002/brb3.312

Introduction

Huntington's disease (HD) is a degenerative disorder of the nervous system caused by an unstable cytosine-adenine-guanine (CAG) expansion in exon 1 of the HTT gene (MacDonald et al. 1993). Despite progress, there is still no cure and available drug agents only provide partial relief of motor and psychiatric symptoms. There is, therefore, an urgent need to trial treatments that can impact

Abstract

Background: There is a wealth of evidence detailing gray matter degeneration and loss of cognitive function over time in individuals with Huntington's disease (HD). Efforts to attenuate disease-related brain and cognitive changes have been unsuccessful to date. Multidisciplinary rehabilitation, comprising motor and cognitive intervention, has been shown to positively impact on functional capacity, depression, quality of life and some aspects of cognition in individuals with HD. This exploratory study aimed to evaluate, for the first time, whether multidisciplinary rehabilitation can slow further deterioration of disease-related brain changes and related cognitive deficits in individuals with manifest HD. **Methods:** Fifteen participants who manifest HD undertook a multidisciplinary rehabilitation intervention spanning 9 months. The intervention consisted of once-weekly supervised clinical exercise, thrice-weekly self-directed home based exercise and fortnightly occupational therapy. Participants were assessed using MR imaging and validated cognitive measures at baseline and after 9 months. **Results:** Participants displayed significantly increased gray matter volume in the right caudate and bilaterally in the dorsolateral prefrontal cortex after 9 months of multidisciplinary rehabilitation. Volumetric increases in gray matter were accompanied by significant improvements in verbal learning and memory (Hopkins Verbal Learning-Test). A significant association was found between gray matter volume increases in the dorsolateral prefrontal cortex and performance on verbal learning and memory. **Conclusions:** This study provides preliminary evidence that multidisciplinary rehabilitation positively impacts on gray matter changes and cognitive functions relating to verbal learning and memory in individuals with manifest HD. Larger controlled trials are required to confirm these preliminary findings.

on disease-related brain changes and clinical aspects of HD.

Over the last decade, parcellation and voxel based morphometry (VBM) imaging studies have shown evidence of grey matter (GM) degeneration in cortical and subcortical brain structures in HD (Hobbs et al. 2011; Dominguez et al. 2013; Georgiou-Karistianis et al. 2013a). Degeneration of GM is particularly pronounced in the striatum, commencing up to 20 years prior to clinical onset

(Georgiou-Karistianis *et al.* 2013a; Tabrizi *et al.* 2013). Over the course of the disease, GM loss becomes more widespread, with atrophy also observed in frontal and occipital cortices (Dominguez *et al.* 2013; Tabrizi *et al.* 2013).

Deficits in cognitive function also arise in HD, even prior to diagnosis, presumably as a result of the neurodegenerative processes (Stout *et al.* 2012). In early HD, there are documented deficits in attention (Georgiou-Karistianis *et al.* 2012), psychomotor speed (Stout *et al.* 2012), working memory (Stout *et al.* 2012), planning and inhibition (Ho *et al.* 2003). In the absence of effective treatments, these deficits worsen over time, negatively impacting on functional independence and quality of life (Eddy and Rickards 2013).

The loss of GM has been shown to correlate with a decline in cognitive performance in HD. Scahill *et al.* (2013) have shown that loss of GM in cortical and sub-cortical structures significantly correlates with poorer performance on emotional recognition, working memory and odor identification tasks. Harrington *et al.* (2014) have further shown that degeneration of fronto-striatal and fronto-parietal structures correlates with poorer performance on attention, processing speed, verbal learning and memory and emotional recognition tasks.

Recent evidence suggests that lifestyle factors significantly influence disease-related brain and cognitive changes in HD. Bonner-Jackson *et al.* (2013) have shown that greater cognitive reserve (computed as the composite of innate intelligence and educational level) is associated with a slower rate of volume loss in the caudate nucleus and putamen and greater preservation of cognitive function in premanifest HD. Moreover, higher education status is significantly associated with a better cognitive outcome on the Unified Huntington's Disease Rating Scale (UHDRS) in manifest HD (López-Sendón *et al.* 2011). Finally, lifestyle passivity has been shown to significantly influence the onset of symptoms in HD (Trembath *et al.* 2010). Treatment strategies that enrich lifestyle may impact on disease-related brain changes and a loss of cognitive function in HD and warrant further investigation.

Previous studies have shown that environmental enrichment can preserve peristriatal structures and cognitive function in HD rodent models (van Dellen *et al.* 2000; Wood *et al.* 2010). Moreover, lifestyle interventions, such as multidisciplinary rehabilitation, have been shown to improve aspects of cognition, functional capacity, depression and quality of life (Zinzi *et al.* 2007; Veenhuizen *et al.* 2011; Piira *et al.* 2013; Thompson *et al.* 2013). When assessed separately, cognitive and motor interventions have also been reported to increase hippocampal, GM and white matter volume in the elderly and those with neurodegenerative disorders (Erickson *et al.* 2011; Burciu *et al.* 2013; Bonzano *et al.* 2014; Kühn *et al.* 2014).

The outlined findings informed our decision to evaluate the utility of multidisciplinary rehabilitation on disease-related brain changes and cognitive function in manifest HD. Specifically, we evaluated the effects of multidisciplinary rehabilitation on attenuating GM loss and associated declines in cognitive function. We hypothesized that multidisciplinary rehabilitation would increase GM volume in dorsolateral prefrontal cortex (DLPFC), striatum, and hippocampus structures that are known to be functionally relevant to cognitive function. In addition, we expected GM volume increases to be associated with better cognitive outcomes.

Materials and Methods

Study design

The present investigation was a 9 month exploratory study on the effects of multidisciplinary rehabilitation on brain structure and cognition in individuals with manifest HD. The duration of the intervention was chosen for two reasons: (1) structural changes can be detected in individuals with manifest HD after 6 months (Henley *et al.* 2006), and (2) evidence has shown that rehabilitation interventions can have favorable effects on brain structure after 2 weeks (Burciu *et al.* 2013).

Study approval, registration, and patient consent

Ethical approval was granted by the Edith Cowan University and North Metropolitan Area Mental Health Service (NMAMHS) Human Research Ethics Committees. Written informed consent was provided by all participants.

Participants

Fifteen participants with manifest HD were recruited using the North Metropolitan Area Mental Health Service Neuroscience Unit Database. Inclusion criteria included a family history of HD, a positive genetic test for the HD mutation (CAG >39), manifest disease [Unified Huntington's Disease Rating Scale-Total Motor Score (UHDRS-TMS) >5], the capacity to follow written or verbal instruction, the ability to perform submaximal aerobic and resistive exercise and aged 18 years or older. Participants were excluded if they suffered from recent drug or alcohol abuse, had a confounding neurological condition or concomitant physical, cardiovascular or respiratory condition which contraindicated exercise. Medication adjustments were recorded routinely throughout the trial (see Table 1).

Table 1. Participant demographics.

No	Gender	CAG length	Age	Disease Duration (Years)	DBS	UHDRS-TMS	Medication (baseline)	Medication (during)
1	Male	46	57	7.6	596	45	Aripiprazole, Mirtazapine, Escitalopram	Aripiprazole Escitalopram
2	Male	42	71	9.5	461.5	59	Clonazepam, Olanzapine	Clonazepam, Olanzapine
3	Female	46	51	2.3	535.5	18	Amantadine, Mirtazapine, Venlafaxine, Mirtazapine, Olanzapine	Amantadine, Mirtazapine, Setraline, Creatine, CoQ10, Venlafaxine, Mirtazapine, Olanzapine
4	Male	45	47	1.8	446.5	52	Aripiprazole, Olanzapine, Mirtazapine, Escitalopram, Nitrazepam	Aripiprazole, Olanzapine, Escitalopram, Nitrazepam, Benzhexol
5	Female	46	45	4.2	472.5	36	Olanzapine, Escitalopram, CoQ10	Olanzapine, Escitalopram, CoQ10
6	Female	44	54	0.9	459	19	–	Olanzapine, Escitalopram
7	Female	41	50	0.6	275	25	Mirtazapine, Escitalopram, Aripiprazole, Lorazepam	Mirtazapine, Escitalopram, Aripiprazole, Lorazepam, Propranolol
8	Male	44	48	1.4	408	58	Aripiprazole, Gabapentin, Escitalopram, Olanzapine, Tetrabenazine	Amantadine, Clonazepam, Amantadine, Gabapentin, Pramipexole
9	Female	44	50	10.5	433.5	44	–	Fluoxetine, Tetrabenazine, Actonel
10	Female	39	49	3.3	175	39	–	–
11	Male	41	61	0.9	335.5	13	–	–
12	Female	43	56	1.4	427.5	32	Haloperidol, Paroxetine, CoQ10	Haloperidol, Paroxetine, CoQ10
13	Male	41	53	17.3	297	5	Escitalopram	Aripiprazole, Escitalopram
14	Male	44	48	1	408	12	Prazosin	Aripiprazole, Atenolol, Atonvastatin, Clonazepam, Clopidogrel, Quetiapine, NA
15	Male	40	68	6.7	310.5	17	–	–
Summary	8M/7F	43.6 ± 2.2	52.5 ± 6.6	4.6 ± 4.8	402.7 ± 107.7	31.6 ± 17.5	NA	NA

DBS, Disease Burden Score (age × [CAG–35.5]), UHDRS-TMS, Unified Huntington's Disease Rating Scale-Total Motor Score.

Multidisciplinary rehabilitation intervention

The intervention was designed after baseline assessment of the participants by an experienced interdisciplinary team consisting of physical therapists, exercise physiologists, occupational therapists, and strength and conditioning specialists. The intervention consisted of a clinical exercise program, a home-based exercise program and fortnightly occupational therapy. The clinical exercise program consisted of supervised weekly aerobic and resistance exercises for an hour. The home-based exercise program involved thrice weekly self-directed muscle strengthening and fine motor exercises for an hour. Occupational therapy consisted of a variety of paper and pencil, verbal planning, memory, and problem solving exercises designed to enhance cognition and executive function (see the online Appendix S1 for specific details on the multidisciplinary rehabilitation intervention). Adherence to clinical exercise and occupational therapy sessions were recorded by clinical exercise specialists and occupational therapists using a training diary. Adherence to the home-based exercise sessions were recorded by patients using a provided training diary.

Outcome measures

Magnetic resonance imaging

Structural MR (magnetic resonance) images from 15 participants were acquired at baseline and 9-month follow-up using a 3T Philips Achieva Scanner and a Philips 8 – channel head coil (Philips Healthcare, Best, The Netherlands). Structural scans consisted of a T_1 3D Turbo Field Echo (TFE) scan (400×400 , 130 slices, $1 \times 1 \times 1$ mm voxels, TR = 5.8 msec, TE = 2.7 msec).

Voxel-based morphometry (VBM) was performed on structural MR images to determine increases and decreases in GM volume between baseline and 9 months. As implemented in FSL-VBM Version 1.1, the VBM (Douaud et al. 2007), protocol included removal of nonbrain tissue from each participant's images, tissue segmentation into GM, spatial normalization (nonlinearly to MNI 152) at $2 \times 2 \times 2$ mm³ resolution and (nonlinear) registration to a right-left symmetric, study-specific GM template (average of all individual grey matter images). These images were modulated and then smoothed with a Gaussian kernel of ~4.6 mm full width half maximum (FWHM).

Cognitive and executive function measures

Cognitive performance was evaluated at baseline and at 9 months using a variety of cognitive measures previously shown to be sensitive in HD (Stout et al. 2012; Tabrizi

et al. 2013). The Color Word Interference Test (CWIT) and Trail Making Test components of the Delis-Kaplan Executive Function System (D-KEFS) (Delis et al. 2001, 2004) were used to examine response inhibition and cognitive flexibility. The Symbol Digit Modalities Test (SDMT) (Smith 1982) was used to examine information processing speed and attention. Verbal learning and memory were examined using the Hopkins Verbal Learning Test-Revised (HVLTR) (Brandt 1991). All cognitive assessments were performed by cognitive raters blinded to the treatment condition.

Statistics

Demographic data are given as means and standard deviations. We used linear regression to estimate the increase or decrease in GM volume between baseline and 9 months. The regression model included separate explanatory variables for each participant (for each subject's mean effect) and age. Analysis was focused on regions-of-interest (ROIs) defined a priori based on previous studies in HD shown to be functionally relevant in terms of cognitive capacity (as reflected in episodic memory performance). ROIs included the striatum, hippocampus, and dorsolateral prefrontal cortex (DLPFC). Inferential statistics were carried out using a nonparametric permutation method (as implemented by FSL's randomise tool). Only clusters with >10 contiguous voxels at a significance level of $P < 0.05$ were considered to be indicative of significant longitudinal change. As we adopted an exploratory analysis strategy with ROIs clearly defined a priori, no correction for multiple comparisons was applied. GM volume change was also evaluated beyond the ROIs. In this case, maps were thresholded at $P < 0.01$ (uncorrected) and voxels were considered significant within clusters of >10 contiguous voxels. The normality of cognitive data was assessed using the Shapiro-Wilk test. Changes in cognitive performance were assessed using mean values at baseline and at 9 months with paired t -tests. Statistical significance was set at ($P \leq 0.05$). All statistical analyses were performed using STATA 9.1 (Stata Corp, 4905 Lakeway Dr, TX). We then investigated the functional relevance of change in GM volume in the ROIs, as reflected by associations between significant volume changes and significant change in performance measures from the HVLTR (follow-up score minus baseline score): total recall, delayed recall, retention, and the recognition discrimination index (RDI). The HVLTR was chosen as dysfunction in recall and recognition memory is an important clinical feature of HD (Montoya et al. 2006). In order to quantify GM volume change, we created a single difference image for each participant by

subtracting the follow-up from the baseline smoothed, modulated image generated by the VBM protocol. The relationship between volume change in ROIs and change in cognitive function was then assessed voxel-wise by means of FSL's randomize tool. Age was included as a covariate in all analyses.

Results

Demographics

Table 1 displays demographic data and information on disease duration, disease burden and severity of motor abnormalities. Participants displayed high adherence to the supervised clinical program (84.2%), moderate adherence to the home-based program (58.6%) and high adherence to occupational therapy sessions (79.2%).

Structural brain changes

Figure 1 shows significant volumetric increases in GM in the DLPFC bilaterally and in the tail of the right caudate

nucleus after multidisciplinary rehabilitation. All remaining ROIs, including the right hippocampus, left putamen, and accumbens showed GM volume loss. Beyond these ROIs, changes in GM volume were also observed. The superior thalami, left inferior temporal pole, right subcallosal cortex, and parasagittal primary motor areas exhibited increases in GM volume. By contrast, the left anterior insula, right posterior cingulate/precuneus, left lateral occipital cortex, subcallosal cortex, and focal areas in the temporal cortex bilaterally showed GM volume loss (Fig. 2), consistent with previous neuroimaging studies in individuals with HD (Tabrizi *et al.* 2011, 2012, 2013; Dominguez *et al.* 2013; Georgiou-Karistianis *et al.* 2013a).

Cognitive and executive function changes

Significant improvement was observed on the delayed recall (number of words recalled after delay) component of the HVLT-R after 9 months of multidisciplinary rehabilitation (see Table 2). No significant changes were found for CWIT, TMT, and SDMT outcomes after 9 months of multidisciplinary rehabilitation (see Table 2).

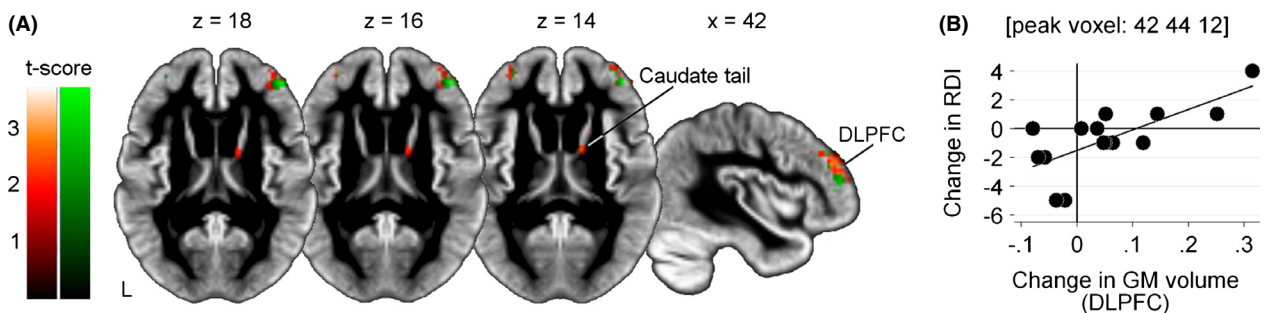


Figure 1. Significant GM volume changes after multidisciplinary rehabilitation in individuals with manifest HD (A) Significantly increased GM volume in the DLPFC and right caudate nucleus tail after 9 months of multidisciplinary rehabilitation in individuals with HD (red-yellow), and a significant correlation between increased GM volume in DLPFC and preserved performance on the RDI task (green). Results are displayed on the study-specific template normalized to MNI space ($P < 0.05$, uncorrected). (B) Scatterplot illustrating the correlation between increased DLPFC volume at the peak voxel and preserved performance on the RDI task.

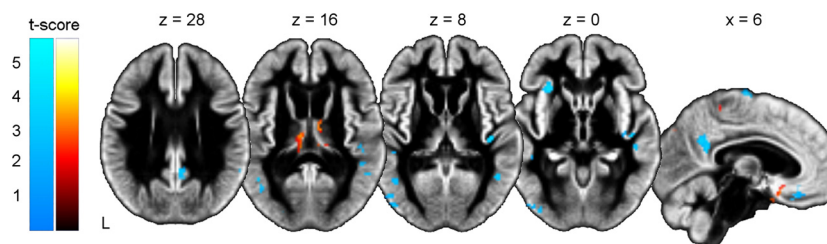


Figure 2. Whole brain GM volume changes in individuals with manifest HD Results of the VBM analysis beyond the ROIs after 9 months of multidisciplinary rehabilitation. GM volume loss in blue; GM volume increases in red-yellow. Results are displayed on the study-specific template normalized to MNI space ($P < 0.01$, uncorrected).

Table 2. Changes in cognitive function after 9 months of multidisciplinary rehabilitation in individuals with manifest HD.

Outcome measures	Baseline (<i>n</i> = 15)	Post-trial (<i>n</i> = 15)	<i>P</i> value
CWIT			
Color naming	48.35 ± 18.86	52.35 ± 22.57	0.0999
Word reading	34.00 ± 10.97	35.35 ± 9.77	0.3249
Inhibition	91.00 ± 39.25	93.57 ± 41.39	0.4525
TMT			
Visual scanning	38.76 ± 15.76	43.52 ± 15.98	0.1149
Number sequencing	55.73 ± 19.87	61.80 ± 23.49	0.0507
Letter sequencing	61.92 ± 34.05	66.21 ± 30.77	0.1262
Motor speed	58.75 ± 27.39	62.31 ± 25.90	0.2433
HVLt-R			
Free recall	17.66 ± 5.56	16.73 ± 6.21	0.2019
Delayed recall	4.92 ± 2.36	6.28 ± 3.14	0.0130*
Retention	76.16 ± 29.21	81.22 ± 27.32	0.1866
Recognition	8.06 ± 3.08	8.93 ± 2.34	0.0793
SDMT			
Correct written	27.00 ± 10.25	26.78 ± 9.96	0.4525
Correct oral	31.00 ± 14.17	28.46 ± 15.59	0.1374

CWIT, Color Word Interference Test; TMT, Trail Making Trials; HVLt-R, Hopkins Verbal Learning Test-Revised; SDMT, Symbol Digits Modalities Test. Significance was set at $*P < 0.05$.

Correlation analyses

Increased GM volume in the DLPFC (bilaterally) was found to be significantly associated with preserved performance on the RDI of the HVLt-R (see Fig. 1).

Discussion

This exploratory investigation has shown that multidisciplinary rehabilitation is capable of increasing GM volume and enhancing some aspects of cognitive function in HD. Specifically, we found evidence of increased GM volume in the right caudate and bilaterally in the DLPFC, as well as an improvement in verbal learning and memory after 9 months of multidisciplinary rehabilitation. We also found a significant association between increased GM volume in the DLPFC and preserved performance in verbal learning and memory.

Similar to previous investigations in HD, we observed GM volume loss in most cortical and subcortical brain regions (Kassubek et al. 2005; Kipps et al. 2005; Peinemann et al. 2005; Mühlau et al. 2007, 2009; Hobbs et al. 2011; Tabrizi et al. 2011, 2012, 2013; Dominguez et al. 2013; Georgiou-Karistianis et al. 2013a). In this study, however, after multidisciplinary rehabilitation, we also observed increased GM volume in the DLPFC and in the right caudate nucleus in individuals with manifest HD. While this is the first study to report such a finding, recent work has shown that cognitive reserve (computed as the composite of intelligence and educational status) influences the rate of volume loss in caudate and putamen structures in individuals with premanifest HD

(Bonner-Jackson et al. 2013). Moreover, environmental enrichment has been shown to preserve peristriatal cerebral volume in the R6/1 HD mouse model (van Dellen et al. 2000). Motor and cognitive interventions have additionally been shown to increase hippocampal volume, white matter and gray matter volume as well as cortical thickness in the left middle frontal gyrus, inferior frontal gyrus, superior temporal gyrus in the elderly and those with other neurodegenerative disorders (Boyke et al. 2008; Engvig et al. 2010, 2012; Erickson et al. 2010, 2011; Lövdén et al. 2012; Burciu et al. 2013; Bonzano et al. 2014; Prosperini et al. 2014; Sehm et al. 2014). These findings provide evidence to suggest that lifestyle factors play an important role in modulating the pathology and clinical profile of HD.

The structural brain changes observed in the present study and others may reflect an increase in neurogenesis and/or favorable changes to neuronal morphology (Lazic et al. 2006; Nithianantharajah et al. 2009; Nithianantharajah and Hannan 2013). This supposition stems from compelling evidence showing that environmental enrichment can increase markers of neurogenesis within the hippocampus (Lazic et al. 2006) as well as increase the diameter of dendritic spines in the R6/1 HD mouse model (Nithianantharajah et al. 2009). Molecular and cellular mechanisms that may have encouraged the surmised neurogenesis and/or alterations in neuronal morphology in response to multidisciplinary rehabilitation include an increased expression of neurotrophins like brain-derived neurotrophic factor (BDNF), enhanced cerebral angiogenesis, and a decrease in elevated circulating glucocorticoids (i.e. cortisol) (Rothman and Mattson 2013). BDNF

enhances neurite outgrowth, synaptogenesis and cell survival, encouraging neurogenesis and experience-dependent synaptic plasticity (Rothman and Mattson 2013). Recent preclinical data suggests that BDNF-dependent neurogenesis is tightly coupled with cerebral angiogenesis (Chen *et al.* 2013), and that both are dynamically modulated by changes in circulating glucocorticoid levels (Weinstein *et al.* 2010; Shikatani *et al.* 2012; Gray *et al.* 2013). In particular, elevated glucocorticoid levels dampen cerebral angiogenesis and BDNF expression in healthy rodent's facilitating a decrease in neurogenesis (Shikatani *et al.* 2012; Gray *et al.* 2013; Rothman and Mattson 2013). It is possible that multidisciplinary rehabilitation facilitates an adaptive stress response that decreases circulating glucocorticoids, thereby enhancing cerebral angiogenesis and BDNF expression, encouraging neurogenesis and structural brain changes in HD patients.

There are currently no therapies that arrest or attenuate the progressive loss of cognitive function seen in individuals with HD. Here, we found evidence of an improvement in verbal learning and memory after 9 months of multidisciplinary rehabilitation. These findings extend on our previous work, where task-specific improvements in processing speed measures were found after a 9 month controlled investigation of multidisciplinary rehabilitation in individuals with manifest HD (Thompson *et al.* 2013). Moreover, these findings support experimental studies documenting improvements in cognitive performance in rodent models of HD after environmental enrichment (Wood *et al.* 2010, 2011). While evidence is limited in HD, an increasing number of studies are showing that motor and cognitive interventions positively impact on cognitive function in the elderly (Liu-Ambrose *et al.* 2010; Erickson *et al.* 2011; Bherer *et al.* 2013) and those suffering with MCI (Hampstead *et al.* 2011, 2012; Smith *et al.* 2013), MS (Solari *et al.* 2004; Flavia *et al.* 2010; Mattioli *et al.* 2010; Shatil *et al.* 2010) and PD (Sammer *et al.* 2006; Calleo *et al.* 2011; París *et al.* 2011). It is likely that the improvements in verbal learning and memory observed in this study resulted from the positive impact of multidisciplinary rehabilitation on caudate and DLPFC structures.

It is well-known that degeneration of GM contributes to the development of cognitive deficits and progressive loss of cognitive function (Scahill *et al.* 2013; Harrington *et al.* 2014). In this study, we found a significant association between increases in GM volume in the DLPFC and preserved performance in verbal learning and memory. This finding is not unexpected given that memory retrieval and recognition is driven primarily by DLPFC connectivity in healthy individuals and in those with HD (Georgiou-Karistianis *et al.* 2013b).

A number of limitations must be taken into account when considering our findings. First, there was no control

group, which limits our ability to derive definitive conclusions on the efficacy of multidisciplinary rehabilitation on disease pathology and clinical features in HD. Second, the small sample of HD participants in this study makes generalizability difficult. Lastly, participants remained on medication throughout the study, which may have influenced the therapeutic response to multidisciplinary rehabilitation.

Despite these limitations, our findings provide the very first evidence that multidisciplinary rehabilitation is effective in increasing regional GM volume in cortical and sub-cortical brain regions in HD. Results also show that multidisciplinary rehabilitation is capable of improving some aspects of cognition over a 9-month period. Moreover, we found that increased GM volume in the DLPFC was associated with preservation of verbal learning and memory. These findings collectively indicate that neuroplasticity may still be present in HD and amenable to multidisciplinary rehabilitation. Future randomized controlled trials with larger sample sizes, longer duration interventions, more comprehensive imaging and cognitive outcomes and appropriate detraining periods are nevertheless required to confirm and expand on our preliminary findings.

Acknowledgments

We sincerely thank the study participants and their families, staff of the Neurosciences Unit North Metropolitan Health Services and Huntington's WA (Inc). We also like to acknowledge the assistance Anne Winsor, Lincoln Randall Jones, Linda Hoult, Nick Kalaitzis, Alison Lim, Alison James, Zara Samani, and Todd Cuning. We also would like to graciously acknowledge the generosity and assistance of the ECU Vario Health & Wellness Institute, South Lakes Leisure Centre, ECU Sport & Fitness Centre, Positive Fit, Lords Subiaco & Genesis Fitness Kelmscott gymnasiums. This work was supported by Lotterywest (grant number 107/20090827).

The information presented in this article has been published as an abstract from the conference proceedings of the European Huntington's Disease Network 2014 (Cruickshank *et al.* 2014).

Conflict of Interest

Dr Thompson received payment via the Lotterwest Grant (grant number 107/20090827). All other authors declare no conflicts of interest.

References

Bherer, L., K. I. Erickson, and T. Liu-Ambrose. 2013. A review of the effects of physical activity and exercise on cognitive

- and brain functions in older adults. *J. Aging Res.*, 2013:657508.
- Bonner-Jackson, A., J. D. Long, H. Westervelt, G. Tremont, E. Aylward, and J. S. Paulsen, and PREDICT-HD Investigators and Coordinators of the Huntington Study Group. 2013. Cognitive reserve and brain reserve in prodromal Huntington's disease. *J. Int. Neuropsychol. Soc.* 19: 739–750.
- Bonzano, L., A. Tacchino, G. Bricchetto, L. Roccatagliata, A. Dessypris, P. Feraco, et al. 2014. Upper limb motor rehabilitation impacts white matter microstructure in multiple sclerosis. *NeuroImage* 90:107–116.
- Boyke, J., J. Driemeyer, C. Gaser, C. Büchel, and A. May. 2008. Training-induced brain structure changes in the elderly. *J. Neurosci.* 28:7031–7035.
- Brandt, J. 1991. The Hopkins verbal learning test: development of a new memory test with six equivalent forms. *Clin. Neuropsychol.* 5:125–142.
- Burciu, R. G., N. Fritsche, O. Granert, L. Schmitz, N. Spönemann, J. Konczak, et al. 2013. Brain changes associated with postural training in patients with cerebellar degeneration: a voxel-based morphometry study. *J. Neurosci.* 33:4594–4604.
- Calleo, J., C. Burrows, H. Levin, L. Marsh, E. Lai, and M. K. York. 2011. Cognitive rehabilitation for executive dysfunction in Parkinson's disease: application and current directions. *Parkinsons Dis.* 2012:1–6.
- Chen, Z., R. Ye, and S. Goldman. 2013. Testosterone modulation of angiogenesis and neurogenesis in the adult songbird brain. *Neuroscience* 239:139–148.
- Cruickshank, T., J. Thompson, J. Domínguez, et al. 2014. J03 The Effect Of Multidisciplinary Rehabilitation On Brain Structure And Cognition In Huntington's Disease: An Exploratory Study. *J. Neurol. Neurosurg. Psychiatry* 85(Suppl 1):A66.
- Delis, D. C., E. Kaplan, and J. H. Kramer. 2001. Delis-Kaplan executive function system (D-KEFS). Psychological Corporation, San Antonio, TX.
- Delis, D. C., J. H. Kramer, E. Kaplan, and J. Holdnack. 2004. Reliability and validity of the Delis-Kaplan executive function system: an update. *J. Int. Neuropsychol. Soc.* 10:301–303.
- van Dellen, A., C. Blakemore, R. Deacon, D. York, and A. J. Hannan. 2000. Delaying the onset of Huntington's in mice. *Nature* 404:721–722.
- Dominguez, D. J., G. F. Egan, M. A. Gray, G. R. Poudel, A. Churchyard, P. Chua, et al. 2013. Multi-modal neuroimaging in premanifest and early Huntington's disease: 18 month longitudinal data from the IMAGE-HD study. *PLoS ONE* 8:e74131.
- Douaud, G., S. Smith, M. Jenkinson, T. Behrens, H. Johansen-Berg, J. Vickers, et al. 2007. Anatomically related grey and white matter abnormalities in adolescent-onset schizophrenia. *Brain* 130:2375–2386.
- Eddy, C. M., and H. E. Rickards. 2013. Impact of cognitive and behavioural changes on quality of life in Huntington's disease. *Basal Ganglia* 3:123–126.
- Engvig, A., A. M. Fjell, L. T. Westlye, T. Moberget, Ø. Sundseth, V. A. Larsen, et al. 2010. Effects of memory training on cortical thickness in the elderly. *NeuroImage* 52:1667–1676.
- Engvig, A., A. M. Fjell, L. T. Westlye, T. Moberget, Ø. Sundseth, V. A. Larsen, et al. 2012. Memory training impacts short-term changes in aging white matter: a Longitudinal Diffusion Tensor Imaging Study. *Hum. Brain Mapp.* 33:2390–2406.
- Erickson, K., C. Raji, O. Lopez, J. Becker, C. Rosano, A. Newman, et al. 2010. Physical activity predicts gray matter volume in late adulthood The Cardiovascular Health Study. *Neurology* 75:1415–1422.
- Erickson, K. I., M. W. Voss, R. S. Prakash, C. Basak, A. Szabo, L. Chaddock, et al. 2011. Exercise training increases size of hippocampus and improves memory. *Proc. Natl Acad. Sci. U. S. A.* 108:3017–3022.
- Flavia, M., C. Stampatori, D. Zanotti, G. Parrinello, and R. Capra. 2010. Efficacy and specificity of intensive cognitive rehabilitation of attention and executive functions in multiple sclerosis. *J. Neurol. Sci.* 288:101–105.
- Georgiou-Karistianis, N., M. Farrow, M. Wilson-Ching, A. Churchyard, J. L. Bradshaw, and D. M. Sheppard. 2012. Deficits in selective attention in symptomatic Huntington disease: assessment using an attentional blink paradigm. *Cogn. Behav. Neurol.* 25:1–6.
- Georgiou-Karistianis, N., M. A. Gray, D. J. Dominguez, A. R. Dymowski, I. Bohanna, L. A. Johnston, et al. 2013a. Automated differentiation of pre-diagnosis Huntington's disease from healthy control individuals based on quadratic discriminant analysis of the basal ganglia: the IMAGE-HD study. *Neurobiol. Dis.* 51:82–92.
- Georgiou-Karistianis, N., G. R. Poudel, D. J. Dominguez, R. Langmaid, M. A. Gray, A. Churchyard, et al. 2013b. Functional and connectivity changes during working memory in Huntington's disease: 18 month longitudinal data from the IMAGE-HD study. *Brain Cogn.* 83:80–91.
- Gray, J., T. Milner, and B. McEwen. 2013. Dynamic plasticity: the role of glucocorticoids, brain-derived neurotrophic factor and other trophic factors. *Neuroscience* 239:214–227.
- Hampstead, B. M., A. Y. Stringer, R. F. Stilla, G. Deshpande, X. Hu, A. B. Moore, et al. 2011. Activation and effective connectivity changes following explicit-memory training for face–name pairs in patients with mild cognitive impairment a pilot study. *Neurorehabil. Neural Repair* 25:210–222.
- Hampstead, B. M., A. Y. Stringer, R. F. Stilla, M. Giddens, and K. Sathian. 2012. Mnemonic strategy training partially restores hippocampal activity in patients with mild cognitive impairment. *Hippocampus* 22:1652–1658.

- Harrington, D. L., D. Liu, M. M. Smith, J. A. Mills, J. D. Long, E. H. Aylward, et al. 2014. Neuroanatomical correlates of cognitive functioning in prodromal Huntington disease. *Brain Behav.* 4:29–40.
- Henley, S., C. Frost, D. Macmanus, T. Warner, N. Fox, and S. Tabrizi. 2006. Increased rate of whole-brain atrophy over 6 months in early Huntington disease. *Neurology* 67:694–696.
- Ho, A., B. Sahakian, R. Brown, R. Barker, J. Hodges, M.-N. Ané, et al. 2003. Profile of cognitive progression in early Huntington's disease. *Neurology* 61:1702–1706.
- Hobbs, N. Z., A. V. Pedrick, M. J. Say, C. Frost, R. Dar Santos, A. Coleman, et al. 2011. The structural involvement of the cingulate cortex in premanifest and early Huntington's disease. *Mov. Disord.* 26:1684–1690.
- Kassubek, J., F. D. Juengling, D. Ecker, and G. B. Landwehrmeyer. 2005. Thalamic atrophy in Huntington's disease co-varies with cognitive performance: a morphometric MRI analysis. *Cereb. Cortex* 15:846–853.
- Kipps, C., A. Duggins, N. Mahant, L. Gomes, J. Ashburner, and E. McCusker. 2005. Progression of structural neuropathology in preclinical Huntington's disease: a tensor based morphometry study. *J. Neurol. Neurosurg. Psychiatry* 76:650–655.
- Kühn, S., T. Gleich, R. Lorenz, U. Lindenberger, and J. Gallinat. 2014. Playing Super Mario induces structural brain plasticity: gray matter changes resulting from training with a commercial video game. *Mol. Psychiatry* 19:265–271.
- Lazic, S. E., H. E. Grote, C. Blakemore, A. J. Hannan, A. van Dellen, W. Phillips, et al. 2006. Neurogenesis in the R6/1 transgenic mouse model of Huntington's disease: effects of environmental enrichment. *Eur. J. Neurosci.* 23:1829–1838.
- Liu-Ambrose, T., L. S. Nagamatsu, P. Graf, B. L. Beattie, M. C. Ashe, and T. C. Handy. 2010. Resistance training and executive functions: a 12-month randomized controlled trial. *Arch. Intern. Med.* 170:170–178.
- López-Sendón, J. L., A. Royuela, P. Trigo, M. Orth, H. Lange, R. Reilmann, et al. 2011. What is the impact of education on Huntington's disease? *Mov. Disord.* 26:1489–1495.
- Lóvdén, M., S. Schaefer, H. Noack, N. C. Bodammer, S. Kühn, H.-J. Heinze, et al. 2012. Spatial navigation training protects the hippocampus against age-related changes during early and late adulthood. *Neurobiol. Aging* 33:620. e9-620. e22.
- MacDonald, M. E., C. M. Ambrose, M. P. Duyao, R. H. Myers, C. Lin, L. Srinidhi, et al. 1993. A novel gene containing a trinucleotide repeat that is expanded and unstable on Huntington's disease chromosomes. *Cell* 72:971–983.
- Mattioli, F., C. Stampatori, F. Bellomi, R. Capra, M. Rocca, and M. Filippi. 2010. Neuropsychological rehabilitation in adult multiple sclerosis. *Neurol. Sci.* 31:271–274.
- Montoya, A., M. Pelletier, M. Menear, E. Duplessis, F. Richer, and M. Lepage. 2006. Episodic memory impairment in Huntington's disease: a meta-analysis. *Neuropsychologia* 44:1984–1994.
- Mühlau, M., A. Weindl, A. Wohlschläger, C. Gaser, M. Städtler, M. Valet, et al. 2007. Voxel-based morphometry indicates relative preservation of the limbic prefrontal cortex in early Huntington disease. *J. Neural. Transm.* 114: 367–372.
- Mühlau, M., A. Wohlschläger, C. Gaser, M. Valet, A. Weindl, S. Nunnemann, et al. 2009. Voxel-based morphometry in individual patients: a pilot study in early Huntington disease. *Am. J. Neuroradiol.* 30:539–543.
- Nithianantharajah, J., and A. Hannan. 2013. Dysregulation of synaptic proteins, dendritic spine abnormalities and pathological plasticity of synapses as experience-dependent mediators of cognitive and psychiatric symptoms in Huntington's disease. *Neuroscience* 251:66–74.
- Nithianantharajah, J., C. Barkus, N. Vijiaratnam, O. Clement, and A. J. Hannan. 2009. Modeling brain reserve: experience-dependent neuronal plasticity in healthy and Huntington's disease transgenic mice. *Am. J. Geriatr. Psychiatry* 17:196–209.
- París, A. P., H. G. Saleta, M. De La Cruz Crespo Maraver, E. Silvestre, M. G. Freixa, C. P. Torrellas, et al. 2011. Blind randomized controlled study of the efficacy of cognitive training in Parkinson's disease. *Mov. Disord.* 26: 1251–1258.
- Peinemann, A., S. Schuller, C. Pohl, T. Jahn, A. Weindl, and J. Kassubek. 2005. Executive dysfunction in early stages of Huntington's disease is associated with striatal and insular atrophy: a neuropsychological and voxel-based morphometric study. *J. Neurol. Sci.* 239:11–19.
- Piira, A., M. R. Van Walsem, G. Mikalsen, K. H. Nilsen, S. Knutsen, and J. C. Frich. 2013. Effects of a one year intensive multidisciplinary rehabilitation program for Patients with Huntington's disease: a prospective intervention study. *PLoS Curr.* 5:1–18.
- Prosperini, L., F. Fanelli, N. Petsas, E. Sbardella, F. Tona, E. Raz, et al. 2014. Multiple sclerosis: changes in microarchitecture of white matter tracts after training with a video game balance board. *Radiology* 273:529–538.
- Rothman, S., and M. Mattson. 2013. Activity-dependent, stress-responsive BDNF signaling and the quest for optimal brain health and resilience throughout the lifespan. *Neuroscience* 239:228–240.
- Sammer, G., I. Reuter, K. Hullmann, M. Kaps, and D. Vaitl. 2006. Training of executive functions in Parkinson's disease. *J. Neurol. Sci.* 248:115–119.
- Scahill, R. I., N. Z. Hobbs, M. J. Say, N. Bechtel, S. M. Henley, H. Hyare, et al. 2013. Clinical impairment in premanifest and early Huntington's disease is associated with regionally specific atrophy. *Hum. Brain Mapp.* 34:519–529.
- Sehm, B., M. Taubert, V. Conde, D. Weise, J. Classen, J. Dukart, et al. 2014. Structural brain plasticity in Parkinson's

- disease induced by balance training. *Neurobiol. Aging* 35:232–239.
- Shatil, E., A. Metzger, O. Horvitz, and A. Miller. 2010. Home-based personalized cognitive training in MS patients: a study of adherence and cognitive performance. *NeuroRehabilitation* 26:143–153.
- Shikatani, E. A., A. Trifonova, E. R. Mandel, S. T. Liu, E. Roudier, A. Krylova, et al. 2012. Inhibition of proliferation, migration and proteolysis contribute to corticosterone-mediated inhibition of angiogenesis. *PLoS ONE* 7:e46625.
- Smith, A.. 1982. Symbol digit modalities test. Western Psychological Services, Los Angeles.
- Smith, J. C., K. A. Nielson, P. Antuono, J.-A. Lyons, R. J. Hanson, A. M. Butts, et al. 2013. Semantic memory functional MRI and cognitive function after exercise intervention in mild cognitive impairment. *J. Alzheimer's Dis.* 37:197–215.
- Solari, A., A. Motta, L. Mendozzi, E. Pucci, M. Forni, G. Mancardi, et al. 2004. Computer-aided retraining of memory and attention in people with multiple sclerosis: a randomized, double-blind controlled trial. *J. Neurol. Sci.* 222:99–104.
- Stout, J. C., R. Jones, I. Labuschagne, A. M. O'regan, M. J. Say, E. M. Dumas, et al. 2012. Evaluation of longitudinal 12 and 24 month cognitive outcomes in premanifest and early Huntington's disease. *J. Neurol. Neurosurg. Psychiatry* 83:687–694.
- Tabrizi, S. J., R. I. Scahill, A. Durr, R. A. Roos, B. R. Leavitt, R. Jones, et al. 2011. Biological and clinical changes in premanifest and early stage Huntington's disease in the TRACK-HD study: the 12-month longitudinal analysis. *Lancet Neurol.* 10:31–42.
- Tabrizi, S. J., R. Reilmann, R. A. Roos, A. Durr, B. Leavitt, G. Owen, et al. 2012. Potential endpoints for clinical trials in premanifest and early Huntington's disease in the TRACK-HD study: analysis of 24 month observational data. *Lancet Neurol.* 11:42–53.
- Tabrizi, S. J., R. I. Scahill, G. Owen, A. Durr, B. R. Leavitt, R. A. Roos, et al. 2013. Predictors of phenotypic progression and disease onset in premanifest and early-stage Huntington's disease in the TRACK-HD study: analysis of 36-month observational data. *Lancet Neurol.* 12:637–649.
- Thompson, J. A., T. M. Cruickshank, L. E. Penailillo, J. W. Lee, R. U. Newton, R. A. Barker, et al. 2013. The effects of multidisciplinary rehabilitation in patients with early-to-middle-stage Huntington's disease: a pilot study. *Eur. J. Neurol.* 20:1325–1329.
- Trembath, M. K., Z. A. Horton, L. Tippett, V. Hogg, V. R. Collins, A. Churchyard, et al. 2010. A retrospective study of the impact of lifestyle on age at onset of Huntington disease. *Mov. Disord.* 25:1444–1450.
- Veenhuizen, R. B., B. Kootstra, W. Vink, J. Posthumus, P. van Bekkum, M. Zijlstra, et al. 2011. Coordinated multidisciplinary care for ambulatory Huntington's disease patients. Evaluation of 18 months of implementation. *Orphanet J. Rare Dis.* 6:1–6.
- Weinstein, R. S., C. Wan, Q. Liu, Y. Wang, M. Almeida, C. A. O'brien, et al. 2010. Endogenous glucocorticoids decrease skeletal angiogenesis, vascularity, hydration, and strength in aged mice. *Aging Cell* 9:147–161.
- Wood, N. I., V. Carta, S. Milde, E. A. Skillings, C. J. McAllister, Y. M. Ang, et al. 2010. Responses to environmental enrichment differ with sex and genotype in a transgenic mouse model of Huntington's disease. *PLoS ONE* 5:e9077.
- Wood, N. I., D. Glynn, and A. J. Morton. 2011. "Brain training" improves cognitive performance and survival in a transgenic mouse model of Huntington's disease. *Neurobiol. Dis.* 42:427–437.
- Zinzi, P., D. Salmaso, R. de Grandis, G. Graziani, S. Maceroni, A. Bentivoglio, et al. 2007. Effects of an intensive rehabilitation programme on patients with Huntington's disease: a pilot study. *Clin. Rehabil.* 21:603–613.

Supporting Information

Additional Supporting Information may be found in the online version of this article:

Table S1. Exercises used in the clinical exercise program throughout the study.

Table S2. Exercises used in the home-based exercise program throughout the study.

Table S3. Exercises used in occupational therapy sessions throughout the study.