

1-1-2013

Predicting Alzheimer disease with β -amyloid imaging: results from the Australian imaging, biomarkers, and lifestyle study of ageing

Christopher Rowe

Pierrick Bourgeat

Kathryn Ellis

Belinda M. Brown

Edith Cowan University, belinda.brown@ecu.edu.au

Lim Yen Ying

See next page for additional authors

Follow this and additional works at: <https://ro.ecu.edu.au/ecuworks2013>



Part of the [Medicine and Health Sciences Commons](#)

[10.1002/ana.24040](https://ro.ecu.edu.au/ecuworks2013/529)

Rowe, C., Bourgeat, P., Ellis, K., Brown, B. M., Yen Ying, L., Mulligan, R., Jones, G., Maruff, P., Woodward, M., Price, R., Robins, P., Tochon-Danguy, H., O'Keefe, G., Pike, K., Yates, P., Szoeke, C., Salvado, O., Macaulay, S., O'Meara, T., Head, R., Cobiac, L., Savage, G., Martins, R. N., Masters, C., Ames, D., & Villemagne, V. (2013). Predicting Alzheimer disease with β -amyloid imaging: results from the Australian imaging, biomarkers, and lifestyle study of ageing. *Annals of Neurology*, 74(6), 905-913. Available [here](#)

This Journal Article is posted at Research Online.

<https://ro.ecu.edu.au/ecuworks2013/529>

Authors

Christopher Rowe, Pierrick Bourgeat, Kathryn Ellis, Belinda M. Brown, Lim Yen Ying, Rachel Mulligan, Gareth Jones, Paul Maruff, Michael Woodward, Roger Price, Peter Robins, Henri Tochon-Danguy, Graeme O'Keefe, Kerryn Pike, Paul Yates, Cassandra Szoeki, Olivier Salvado, S Lance Macaulay, Tim O'Meara, Richard Head, Lynne Cobiac, Greg Savage, Ralph N. Martins, Colin Masters, David Ames, and Victor Villemagne

Predicting Alzheimer Disease with β -Amyloid Imaging: Results from the Australian Imaging, Biomarkers, and Lifestyle Study of Ageing

Christopher C. Rowe, MD,¹ Pierrick Bourgeat, PhD,² Kathryn A. Ellis, PhD,^{3,4}
 Belinda Brown, BSc,⁵ Yen Ying Lim, PhD,^{3,4} Rachel Mulligan, PhD,¹
 Gareth Jones, BSc,¹ Paul Maruff, PhD,³ Michael Woodward, MD,⁶
 Roger Price, PhD,⁷ Peter Robins, MD,⁷ Henri Tochon-Danguy, PhD,¹
 Graeme O'Keefe, PhD,¹ Kerry E. Pike, PhD,^{1,8} Paul Yates, MD,¹
 Cassandra Szoek, MD,⁹ Olivier Salvado, PhD,² S. Lance Macaulay, PhD,¹⁰
 Timothy O'Meara, PhD,¹⁰ Richard Head, PhD,¹⁰ Lynne Cobiac, PhD,¹⁰
 Greg Savage, PhD,¹¹ Ralph Martins, PhD,⁵ Colin L. Masters, MD, PhD,³
 David Ames, MD,^{4,9} and Victor L. Villemagne, MD^{1,3}

Objective: Biomarkers for Alzheimer disease (AD) can detect the disease pathology in asymptomatic subjects and individuals with mild cognitive impairment (MCI), but their cognitive prognosis remains uncertain. We aimed to determine the prognostic value of β -amyloid imaging, alone and in combination with memory performance, hippocampal atrophy, and apolipoprotein E ϵ 4 status in nondemented, older individuals.

Methods: A total of 183 healthy individuals (age = 72.0 \pm 7.26 years) and 87 participants with MCI (age = 73.7 \pm 8.27) in the Australian Imaging, Biomarkers, and Lifestyle study of ageing were studied. Clinical reclassification was performed after 3 years, blind to biomarker findings. β -Amyloid imaging was considered positive if the ¹¹C-Pittsburgh compound B cortical to reference ratio was \geq 1.5.

Results: Thirteen percent of healthy persons progressed (15 to MCI, 8 to dementia), and 59% of the MCI cohort progressed to probable AD. Multivariate analysis showed β -amyloid imaging as the single variable most strongly associated with progression. Of combinations, subtle memory impairment (Z score = -0.5 to -1.5) with a positive amyloid scan was most strongly associated with progression in healthy individuals (odds ratio [OR] = 16, 95% confidence interval [CI] = 3.7–68; positive predictive value [PPV] = 50%, 95% CI = 19–81; negative predictive value [NPV] = 94%, 95% CI = 88–98). Almost all amnesic MCI subjects (Z score \leq -1.5) with a positive amyloid scan developed AD (OR = ∞ ; PPV = 86%, 95% CI = 72–95; NPV = 100%, 95% CI = 80–100). Hippocampal atrophy and ϵ 4 status did not add further predictive value.

View this article online at wileyonlinelibrary.com. DOI: 10.1002/ana.24040

Received Jun 3, 2013, and in revised form Sep 2, 2013. Accepted for publication Sep 14, 2013.

Address correspondence to Dr Rowe, Department of Nuclear Medicine and Centre for PET, Austin Health, 145 Studley Road, Heidelberg, Victoria 3084, Australia. E-mail: christopher.rowe@austin.org.au

From the ¹Austin Health, Department of Nuclear Medicine and Centre for Positron Emission Tomography, Heidelberg, Victoria; ²Commonwealth Science and Industrial Research Organisation Preventative Health National Research Flagship, Australian e-Health Research Centre–BioMedia, Herston, Queensland; ³Florey Institute for Neuroscience and Mental Health, University of Melbourne, Melbourne, Victoria; ⁴Department of Psychiatry, University of Melbourne, Melbourne, Victoria; ⁵Centre of Excellence for Alzheimer's Disease Research and Care, School of Medical Sciences, Edith Cowan University, Joondalup, Western Australia, Australia; ⁶Austin Health, Aged Care Services, Heidelberg, Victoria; ⁷Western Australia Positron Emission Tomography and Cyclotron Service, Sir Charles Gairdner Hospital, Perth, Western Australia, Australia; ⁸School of Psychological Science, La Trobe University, Bundoora, Victoria; ⁹National Ageing Research Institute, Parkville, Victoria; ¹⁰Commonwealth Science and Industrial Research Organisation Preventative Health Flagship, Parkville, Victoria; and ¹¹Department of Psychology and Australian Research Council Centre of Excellence in Cognition and Its Disorders, Macquarie University, Sydney, New South Wales, Australia.

Interpretation: Subtle memory impairment with a positive β -amyloid scan identifies healthy individuals at high risk for MCI or AD. Clearly amnesic patients with a positive amyloid scan have prodromal AD and a poor prognosis for dementia within 3 years.

ANN NEUROL 2013;74:905–913

Earlier and more accurate diagnosis of Alzheimer disease (AD) will aid the development of early intervention therapies and may assist clinical and social management of the disease. The necessity for dementia in the National Institute of Neurological and Communicative Disorders and Stroke–Alzheimer’s Disease and Related Disorders Association (NINCDS-ADRDA) and Diagnostic and Statistical Manual of Mental Disorders 3rd edition revised diagnostic criteria¹ for probable AD confine diagnosis to a late stage of the illness after many years of symptoms and may reduce the likelihood of a useful outcome from therapeutic intervention. Even before dementia, 60% loss of entorhinal neurons has been documented in those in the mild cognitive impairment (MCI) phase of the illness.^{2,3} Imaging data now show that the accumulation of β -amyloid ($A\beta$) plaques, a pathological hallmark of AD, occurs over several decades before dementia,^{4,5} suggesting a wide time window for therapeutic intervention. Consequently, recently published research criteria by the International Work Group^{6,7} and the National Institute of Aging and Alzheimer’s Association (NIA/AA) work group^{8–10} propose the diagnosis of AD prior to dementia through the use of biomarkers for the disease process in combination with episodic memory (EM) assessment. These biomarkers include $A\beta$ imaging with positron emission tomography (PET). Prospective data are needed to validate this new approach to early diagnosis of AD and to inform clinicians on the appropriate clinical use of $A\beta$ imaging, relative to or in combination with other AD biomarkers, and to ensure their appropriate incorporation into clinical trials.

The Australian Imaging, Biomarkers, and Lifestyle study of ageing (AIBL) commenced in 2006 and was designed to improve the understanding of the pathogenesis of AD by intensive and longitudinal study of a large cohort of older persons.¹¹ AIBL now has prospective, longitudinal data to test the validity of the criteria for preclinical and prodromal AD. To that end, clinical outcome at 3-year follow-up relative to baseline cognitive measurements and several AD biomarker findings are reported.

Subjects and Methods

Participants

Written informed consent was obtained from all participants. Approval for the study was obtained from the Austin Health, St Vincent’s Hospital Melbourne, and Edith Cowan University Human Research Ethics Committees. Healthy control (HC)

subjects aged >60 years were recruited by advertisement. Patients with MCI were recruited from dementia specialists in both public and private clinics. The baseline characteristics, methodology, and baseline findings from the AIBL imaging cohort have been published previously.¹² To strengthen the present analysis, data obtained from 72 individuals (32 HC, 40 MCI) with 3 years of follow-up recruited prior to commencement of AIBL at the AIBL imaging core laboratory (Austin Health, Melbourne) with the same recruitment criteria and methods as AIBL have been included. The majority of these individuals subsequently enrolled into AIBL at their first 18-month review, but the very first assessment of each participant whether pre-AIBL or AIBL was used as the baseline for this report to avoid duplication of data and bias of the cohort toward stable clinical status. MCI subjects enrolled pre-AIBL were younger (71.3 ± 8.9 years vs 75.3 ± 7.1 , $p = 0.012$) but had the same rate of progression to AD (63% vs 54%, $p = 0.66$). There were no other demographic differences between the pre-AIBL and direct entry AIBL MCI or HC subjects. In total 193 HC and 93 MCI participants entered the imaging cohorts. After 3 years, 10 HC subjects were lost to follow-up (2 died, 1 developed terminal cancer, and 7 withdrew) and 6 of the MCI subjects were lost to follow-up (5 died and 1 withdrew after a severe stroke).

After each visit (at 0, 18, and 36 months), participants were classified as HC, MCI, AD, or other dementia by consensus panel review of neuropsychological test scores and functional reports blind to biomarker findings. Diagnosis of AD was made as per NINCDS-ADRDA criteria for probable AD.¹ Diagnosis of MCI was made as per Petersen and Winblad criteria.^{13,14} All HC participants performed within the published normal range for their age group on neuropsychological tests.¹² Sixteen MCI and 5 HC subjects did not attend study centers for final follow-up. In these participants, an informant telephone interview was performed by a neurologist.

Neuropsychological Evaluation

All participants underwent extensive neuropsychological testing as described previously.¹¹ However, in this report, only the California Verbal Learning Test-II long delayed free recall (CVLT-II LDFR) Z score derived from published, age-matched normal values was used to define EM performance at the baseline assessment so that findings could be readily applied to clinical practice.

Magnetic Resonance Imaging

All subjects underwent 3-dimensional magnetization-prepared rapid gradient-echo (3D-MPRAGE), T2 fast spin echo and fluid-attenuated inversion recovery (FLAIR) sequences on 1.5T or 3T scanners. Subjects with history of stroke or a finding of a

cortical stroke based on interpretation of the T1 and FLAIR images by a neuroradiologist were excluded.

PET

As previously described,¹² a 30-minute acquisition scan was performed with Allegro (Philips Medical Systems, Cleveland, OH) PET cameras at Austin Health for the Melbourne participants and the Sir Charles Gardiner Hospital for the Perth participants, starting 40 minutes after injection of ~ 370 MBq ^{11}C -Pittsburgh compound B (PiB).

Image Analysis

A preset in-house template of cortical regions of interest (ROIs) was applied to the PiB scan via placement on the subject's coregistered magnetic resonance imaging (MRI) by an operator (V.L.V.) who was blind to the subject's clinical status as previously described.^{4,12} Coregistration of PiB to MRI was performed with SPM5.¹⁵

$\text{A}\beta$ burden was expressed as the average of the mean of frontal, superior parietal, lateral temporal, lateral occipital, and anterior and posterior cingulate ROI activity per voxel divided by the cerebellar gray matter voxel activity and termed the standardized uptake value ratio (SUVR).

Hippocampal volume (HV) was calculated from T1 MPRAGE images after tissue segmentation using an implementation of the expectation maximization segmentation algorithm.¹⁶ The modified algorithm applied 9 MRI atlases with their associated tissue priors spatially normalized to each participant to provide 9 segmentation maps. A voting scheme then provided consensus for each voxel. As previously described, a hippocampal template was manually delineated on the Montreal Neurologic Institute single-subject template¹⁷ and then spatially normalized to each individual study for hippocampus measurement.¹⁸ MRI data were normalized by dividing the HV by the total intracranial volume consisting of the sum of the cerebrospinal fluid (CSF), gray matter, and white matter volumes. The full pipeline is available as a plug-in of the open-source software MILXView (<http://research.ict.csiro.au/software/milxview>).

Determination of Cutoff Values

A negatively skewed and bimodal distribution of PiB SUVR was observed in HC subjects, and could not be normalized with data transformations. As reported previously, baseline PiB SUVR was classified as negative (PiB⁻, SUVR < 1.5) or positive (PiB⁺, SUVR \geq 1.5) based on the result of a hierarchical cluster analysis performed on all HC participants at Austin Health.¹² This definition of PiB⁺ (SUVR \geq 1.5) was used for the primary analyses in this report. However, 2-graph receiver operator curve (ROC) analysis¹⁹ of the AIBL AD and HC cohorts gave an SUVR of 1.9 as the optimal cutpoint for distinction of AD from age-matched HC subjects. This higher SUVR cutpoint was subsequently used to define high PiB⁺ (ie, AD-like) and low PiB⁺ (SUVR = 1.5–1.9) to investigate whether AD-like, highly positive PiB scans had greater predictive value than mildly positive scans.

Given the normal distributions of MRI volumetrics in the AIBL HC and AD groups, a 2-graph ROC approach was applied to establish the optimal cutoff for HV (4.0 cm³) between them. This cutoff was then applied to the HC and MCI subjects in this study to determine the predictive value of hippocampal atrophy (HA).

For the HC group, subjects were classified as having subtle EM impairment (EM⁺) when the CVLT-II LDFR Z score was -0.5 to -1.5 below the published age- and gender-adjusted normal mean. Amnesic MCI required a CVLT-II LDFR Z score of ≤ -1.5 .

Apolipoprotein E genotype was classified as $\epsilon 4^+$ when 1 or 2 $\epsilon 4$ alleles were present.

Statistical Evaluation

Data are presented as mean \pm standard deviation unless otherwise stated. Correction for age or years of education was not applied to contingency table data analysis. Chi-square analyses were conducted to determine the extent to which each individual biomarker increased the risk of progression to MCI or AD. Combination biomarker pairs (both biomarkers positive vs both negative with exclusion of participants who had only 1 of the pair positive) were also analyzed. Odds ratios (ORs) and their 95% confidence intervals (CIs), positive predictive value (PPV), and negative predictive value (NPV) were calculated to provide an estimation of the magnitude of associations. If the OR could not be calculated due to a 100% NPV, Cox proportional hazard ratio was derived for this pair of tests. Probability values resulting from all statistics were corrected for multiple comparisons using false discovery rates. To determine which baseline risk factor was the strongest predictor of progression to MCI or AD, PiB, HV, EM, apolipoprotein E $\epsilon 4$ status, age, and years of education were considered simultaneously in a stepwise logistic regression analysis that used the Wald forward selection method.

Results

Healthy Elderly Cohort

Characteristics of the healthy cohort are provided in Table 1. Participants were generally well educated, with an average of 13.5 years of education, and only 12% had a CVLT-II LDFR Z score below -0.5 . Twenty-three (13%) HC subjects progressed to MCI or dementia over 3 years (15 to MCI, 7 to AD, and 1 to vascular dementia). Only PiB⁺ and EM⁺ were significantly associated with progression, with ORs of 4.8 and 4.2, respectively. The combination of PiB⁺ with EM⁺, or with HV⁺, increased the risk to approximately 50% (Table 2).

For HC progression to MCI or dementia, the PPV for PiB⁺ increased from 17% in those mildly PiB⁺ to 37% in those with a high PiB⁺ (AD-like) scan (Fig), but this was not significant. There were no baseline differences in gender, age, years of education, $\epsilon 4^+$ prevalence, HV, or memory score between low PiB⁺ and high PiB⁺.

TABLE 1. Characteristics of the Healthy and Mildly Cognitively Impaired Participants

Characteristic	HC, n = 183	MCI, n = 87
Age, yr (SD)	72.0 (7.26)	73.7 (8.27)
Female, No. [%]	95 [51.9]	43 [49.4]
Education, yr (SD)	13.52 (3.73)	12.56 (4.27)
APOE ϵ 4 carrier, No. [%]	74 [40.4]	50 [57.5]
PiB positive, No. [%]	53 [29.0], 29 high ^a	60 [69.0], 50 high ^a
Memory impairment, ^b No. [%]	22 [12.0]	53 [60.9]
Reduced hippocampal volume, ^c No. [%]	46 [26.2]	48 [67.6]
Progressed to AD at 36 months, No. [%]	7 [3.8]	51 [58.6]
Progressed to dementia at 36 months, No. [%]	8 [4.1]	55 [63.2]

^aHighPiB positive is defined as standardized uptake value ratio > 1.9.
^bDefined by California Verbal Learning Test-II delayed free recall Zscore as ≤ -0.5 for HC and ≤ -1.5 for MCI.
^cMagnetic resonance imaging assessments on 175 HC and 71 MCI subjects.
AD = Alzheimer disease; HC = healthy control; MCI = mild cognitive impairment; PiB = ¹¹C-Pittsburgh compound B; SD = standard deviation.

For the 8 HC subjects who progressed to dementia, PiB⁺ and HV⁺ were predictive, with ORs of 8.2 and 9.5, respectively, but with low PPV (11% and 13%, respectively).

Multivariate logistic regression indicated that PiB⁺ was the strongest predictor of progression to MCI or dementia 3 years after baseline (OR = 4.81, 95% CI = 1.84–12.58, Wald chi-square[1] = 10.25, $p = 0.001$). Years of education also predicted progression to MCI or dementia 3 years after baseline, although the OR was significantly lower (OR = 0.82, 95% CI = 0.71–0.95, Wald chi-square[1] = 7.35, $p = 0.007$). Age, ϵ 4⁺, HV⁺, and EM⁺ by themselves did not improve the prediction of disease progression (all Wald chi-square < 1.75, all $p > 0.187$). Analysis limited only to the 8 who progressed to dementia showed that HV⁺ (OR = 8.10, 95% CI = 1.5–43.2, Wald chi-square[1] = 5.99, $p = 0.014$) and PiB⁺ (OR = 7.30, 95% CI = 1.4–39.1, Wald chi-square[1] = 5.40, $p = 0.020$) predicted progression to dementia, but ϵ 4⁺ and EM⁺ did not.

MCI Cohort

Characteristics of the MCI cohort are provided in Table 1. Fifty-one (59%) progressed to a clinical diagnosis of probable AD and 3 (3.4%) to other dementias over 3 years. Of those progressing to AD, 5 had a negative baseline PiB scan and all were ϵ 4 negative. PiB⁺ (OR = 14.5), amnesic MCI (OR = 10.6), ϵ 4⁺ (OR = 5.4), and HV⁺ (OR = 3.8) were all significantly associated with progression to probable AD (Table 3).

For progression from MCI to probable AD, the PPV increased significantly from 44% in those with a mildly PiB⁺ scan to 81% in those with a high PiB⁺ scan (see Fig; $p = 0.027$). There were no baseline differences in gender, age, years of education, ϵ 4⁺ prevalence, or HV between the low PiB⁺ and high PiB⁺ MCI subjects, but CVLT Z scores were significantly lower in the high PiB⁺ group (-1.83 ± 0.9 vs -3.14 ± 0.9 , $p = 0.003$).

Of the MCI subjects with both PiB⁺ and amnesic MCI, the PPV was 86% for progression to probable AD and the NPV was 100% (see Table 3). The hazard ratio was $>10^5$ ($p < 0.001$). PiB⁺ with HV⁺ also showed a very high rate of progression to probable AD (PPV = 83%, OR = 44). The combination of PiB⁺ with ϵ 4⁺ did not add to the predictive power of PiB⁺ alone. There were insufficient PiB⁺ subjects with amnesic MCI without reduced HV to determine whether the addition of the HV biomarker increased predictive power.

Multivariate logistic regression indicated that PiB⁺ was most strongly associated with progression to probable AD 3 years after baseline (OR = 12.71, 95% CI = 2.89–55.90, Wald chi-square[1] = 11.32, $p < 0.001$). Amnesic MCI also predicted progression to probable AD, although the OR for this was numerically lower (OR = 6.26, 95% CI = 1.78–22.30, Wald chi-square[1] = 8.01, $p = 0.005$). With these factors accounted for, age, years of education, ϵ 4⁺, and HV⁺ did not improve significantly the prediction of progression to probable AD (all Wald chi-square[1] < 2.55, all $p > 0.110$).

TABLE 2. Healthy Participants: Bivariate Correlates of Progression to MCI or Dementia over 3 Years

Characteristic	Progressed to MCI/AD			Chi-square	<i>p</i>	OR (95%CI)	PPV (95%CI)	NPV (95%CI)
	No	Yes	Odds					
PiB ⁻	121(93%)	9 (7%)	0.08					
PiB ⁺	39 (74%)	14 (26%)	0.35	13.02	0.001	4.8 (1.9–12.0)	26.4% (15–40)	93.1% (87–97)
Non-ε4	97 (91%)	10 (9%)	0.10					
ε4 ⁺	61 (82%)	13 (18%)	0.22	2.67	0.103	2.1 (0.9–5.0)	17.6% (10–28)	90.7% (84–95)
Normal HV	116(90%)	13 (10%)	0.11					
Reduced HV	37 (80%)	9 (20%)	0.25	2.78	0.67	2.2 (0.9–5.5)	19.6% (9–34)	89.9% (83–95)
CVLT-II > -0.5	145 (90%)	16(10%)	0.11					
CVLT-II ≤ -0.5	15 (68%)	7 (32%)	0.47	8.43	0.014	4.2 (1.5–11.9)	31.8% (14–55)	90.1% (84–94)
PiB ⁻ , non-ε4	82 (93%)	6 (7%)	0.08					
PiB ⁺ , ε4 ⁺	24 (71%)	10(29%)	0.41	10.99	0.002	5.7 (1.9–17.3)	29.4% (15–48)	93.2% (86–97)
PiB ⁻ , normal HV	89 (92%)	8 (8%)	0.09					
PiB ⁺ , reduced HV	9 (53%)	8 (47%)	0.89	18.06	<0.001	9.9 (3.0–32.7)	47.1% (23–72)	91.8% (84–96)
PiB ⁻ , CVLT-II > -0.5	111 (94%)	7 (6%)	0.06					
PiB ⁺ , CVLT-II ≤ -0.5	5 (50%)	5 (50%)	1.00	21.07	<0.001	15.9 (3.7–68.0)	50.0% (19–81)	94.1% (88–98)

AD = Alzheimer disease; CI = confidence interval; CVLT-II = California Verbal Learning Test-II; HV = hippocampal volume; MCI = mild cognitive impairment; NPV = negative predictive value; OR = odds ratio; PiB = ¹¹C-Pittsburgh compound B; PPV = positive predictive value.

Discussion

A key finding of this study was that healthy individuals with a positive $A\beta$ scan, who also have a subtle reduction in EM or HA, have a significant risk of progression to MCI or AD over 3 years, sufficient risk to warrant early intervention trials in such individuals. In this study the risk was 50%, but the confidence interval was wide, so more data are required to better define the magnitude of this risk. Multivariate analysis demonstrated that the presence of $A\beta$ plaques detectable by PET was the main influence in these prediction pairs. This finding supports the staging of preclinical AD proposed by the NIA/AA workgroup,¹⁰ indicating that individuals who are biomarker positive for $A\beta$ and also have subtle memory impairment or biomarker evidence of neurodegeneration are at a more advanced stage in the development of AD and at greater risk of disease manifestation than those

with only a positive $A\beta$ biomarker. This finding is consistent with what we and others have recently shown in regard to the relationship between $A\beta$ accumulation and other features of AD.^{4,5} The accumulation of $A\beta$ occurs over 2 to 3 decades and can be detected at low levels with PiB PET 15 to 20 years before the typical levels found in patients with the clinical diagnosis of probable AD are achieved. In contrast, these studies suggest that HA and EM impairment are not detectable in an individual until approximately 5 years before dementia.^{4,5}

There are few previous reports from longitudinal studies to validate the NIA/AA criteria for preclinical AD. The Mayo Clinic Study of Aging has reported that after 1 year, 43% of healthy elderly who had subtle memory impairment, a positive PiB scan, and reduced HV progressed to MCI or dementia.²⁰ The Knight Alzheimer's Disease Research Center at Washington

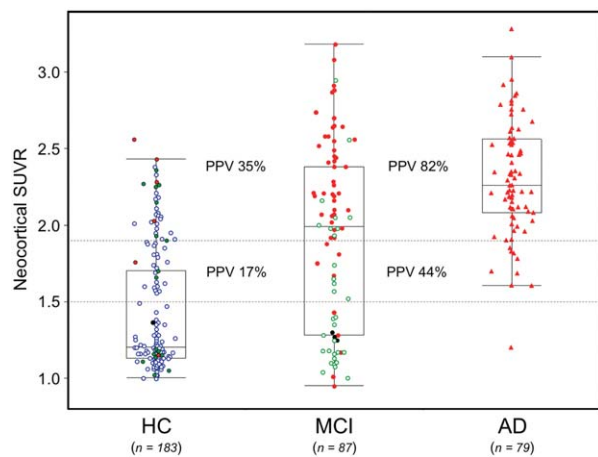


FIGURE: Individual ^{11}C -Pittsburgh compound B standardized uptake value ratio (SUVR) values by baseline clinical diagnosis and clinical status after 3 years. Healthy control (HC; blue) and mild cognitive impairment (MCI; green) subjects who did not progress are shown as open circles. HC subjects who progressed to MCI are shown as solid green circles. Those HC and MCI subjects who progressed to Alzheimer disease (AD) are shown as solid red circles. Black circles denote progression to dementia not due to AD. The positive predictive values (PPVs) for progression are shown for SUVR values of 1.5 to 1.9 and >1.9 . For comparison, the SUVRs for all subjects with AD at enrollment into the Australian Imaging, Biomarkers, and Lifestyle study of ageing are shown as red triangles on the right side of the figure.

University reported that in healthy, late middle-aged and older adults followed for an average of 3.7 years, a positive PiB scan predicted progression to early AD. The predictive validity of subtle memory impairment was not investigated in that study.²¹ These findings and our study provide substantial validation for the proposal that pre-clinical AD can be both detected and staged from the combination of cognitive and biomarker data.

The second key finding is that $>80\%$ of individuals meeting the criteria for prodromal AD, that is, clear objective EM impairment with a positive biomarker for AD,⁶ will develop dementia and meet clinical criteria for probable AD within 3 years if the AD biomarker is $A\beta$ imaging. In this study, although there was overlap of CIs on bivariate analysis, $A\beta$ imaging with PiB PET appeared to perform substantially better than MRI measures of HA in identifying individuals with MCI who would progress to Alzheimer dementia (OR = 14.5 vs 3.8). This was supported by the results of multivariate analysis that showed PiB PET to be the strongest predictor of progression to AD. Nevertheless, there was considerable gain in positive predictive power from the presence of both imaging biomarkers (OR = 44, PPV = 83%). However, even greater predictive accuracy was obtained by combining clear objective evidence of EM impairment (ie, amnesic MCI) with a positive PiB scan (PPV = 86%, NPV = 100%), consistent with past reports that EM is

the cognitive domain most affected in early AD^{7,22,23} and has good predictive accuracy for AD in MCI cohorts.^{24–26}

The predictive value of $A\beta$ imaging for progression from MCI to AD has been reported previously. Pooling those studies that, like the present study, used neuropsychological criteria for MCI, reveals progression to AD occurred in 60% if PiB^+ compared to 7% if PiB^- over an average of 2 years of follow-up.^{27–30} We observed a higher rate of progression to a clinical diagnosis of AD in the PiB^- MCI patients of 19% (5 of 27). Given the well-documented deficiencies in the clinical diagnosis of probable AD compared to postmortem neuropathological diagnosis,³¹ particularly in distinguishing AD from other forms of dementia, the observation that 9% (5 of 58) of the MCI cohort that progressed to probable AD were PiB^- is consistent with the reported rate of misdiagnosis. All 5 did not carry the apolipoprotein E $\epsilon 4$ allele that is present in the majority of patients with AD, further suggesting that these individuals have been incorrectly diagnosed.

Limitations

Potential limitations of this study relate to the composition of the healthy elderly cohort, that the diagnosis of AD was not confirmed by histopathology, that EM status relied on 1 test, and that other biomarkers for AD such as CSF $A\beta_{1-42}$ and tau and ^{18}F -fluorodeoxyglucose PET were not available for comparison in AIBL. The healthy elderly cohort contained a higher proportion of apolipoprotein E $\epsilon 4$ allele carriers than found in general population surveys (see Table 1), thereby increasing the proportion likely to have a positive PiB scan and the risk for progression to AD. This could increase the predictive power of all the investigations in the HC cohort, particularly amyloid imaging. The HC participants were recruited by advertisement, not random selection from the community, were generally well educated, and performed better on memory tasks than expected from the published age- and gender-matched normal range. Therefore, it may only be appropriate to apply our definition of subtle memory impairment and its prognostic implication to similar volunteer cohorts or members of the general population who have at least 12 years of education.

EM was classified on the results from 1 test, the CVLT-II LDFR, and its published normal range,³² for reasons stated below. Other tests or a combination of EM measures could have different ability to predict clinical progression.

In a recent meta-analysis,³³ the combination of CSF $A\beta_{1-42}$ and tau yielded an OR of 18 (95% CI = 10–32) for progression from MCI to dementia, similar

TABLE 3. Mild Cognitive Impairment: Bivariate Correlates of Progression to AD over 3 Years

Characteristic	Progressed to AD		Odds	Chi-square	p	OR (95% CI)	PPV (95% CI)	NPV (95% CI)
	No	Yes						
PiB ⁻	22 (81%)	5 (19%)	0.23					
PiB ⁺	14 (23%)	46 (77%)	3.35	25.96	<0.001	14.46 (4.6–45.0)	76.7% (64–87)	81.5% (62–94)
Non- $\epsilon 4$	21 (66%)	11 (34%)	0.52					
$\epsilon 4^+$	13 (26%)	37 (74%)	2.85	12.62	0.007	5.43 (2.1–14.3)	74.0% (60–85)	65.6% (47–81)
Normal HV	15 (65%)	8 (35%)	0.54					
Reduced HV	16 (33%)	32 (67%)	2.03	6.43	0.011	3.75 (1.3–10.7)	66.7% (52–80)	65.2% (43–84)
CVLT-II > -1.5	25 (74%)	9 (26%)	0.35					
CVLT-II \leq -1.5	11 (21%)	42 (79%)	3.76	23.78	0.003	10.61 (3.9–29.1)	79.3% (66–89)	73.5% (56–87)
PiB ⁻ , non- $\epsilon 4$	17 (81%)	4 (19%)	0.23					
PiB ⁺ , $\epsilon 4^+$	10 (21%)	37 (79%)	3.76	21.59	<0.001	15.73 (4.3–57)	78.7% (64–89)	81.0% (58–94)
PiB ⁻ , normal HV	9 (90%)	1 (10%)	0.11					
PiB ⁺ , reduced HV	6 (17%)	29 (83%)	4.88	18.58	<0.001	43.50 (4.6–411)	82.9% (66–93)	90.0% (56–98)
PiB ⁻ , CVLT-II > -1.5	17 (100%)	0 (0%)	0.00					
PiB ⁺ , CVLT-II \leq -1.5	6 (14%)	37 (86%)	6.14	38.16	<0.001	∞	86.1% (72–95)	100% (80–100)

AD = Alzheimer disease; CI = confidence interval; CVLT-II = California Verbal Learning Test-II; HV = hippocampal volume; NPV = negative predictive value; OR = odds ratio; PiB = ¹¹C-Pittsburgh compound B; PPV = positive predictive value.

to the results for PiB PET in the present study. More recently, a study from Washington University reported that both PiB PET and CSF tau to $A\beta_{1-42}$ ratio were strongly associated with progression from HC status to AD.²⁰ As the AIBL study did not collect CSF at entry in this cohort, we were not able to compare our findings with CSF biomarkers.

Applicability to Clinical Practice

At the present time, preclinical detection of AD pathology is for research purposes and not recommended for clinical practice.^{10,34} Amyloid imaging has recently been recommended for detection of AD-related pathology in individuals with MCI in the appropriate clinical setting as part of a comprehensive assessment by a dementia specialist.³⁴ Therefore, where possible, methods that can be applied in clinical practice were used in this analysis. Consequently, although the AIBL study employs an extensive battery of neuropsychological tests,¹¹ this analy-

sis only used a well-known and widely available word list recall task, the CVLT-II, and its published normal range,³² to classify EM performance. Likewise, a binary classification of the $A\beta$ scans as positive or negative was used to be consistent with current clinical practice. The quantitative cutpoint for a positive $A\beta$ PET scan of SUVR = 1.5 correlates well with the threshold for visual detection of $A\beta$.^{35–38} However, this cutpoint is well below the mean of the AD patients in AIBL (mean SUVR = 2.3).¹² The risk for progression in both HC and MCI subjects was substantially higher in those with a high positive (AD-like) PiB scan than in those with a low positive scan (see Fig). This suggests that clinical practice should take into account levels of $A\beta$.

Conclusions

These prospective data from the AIBL study validate the proposed criteria for preclinical and prodromal AD.^{6–8,10} A positive amyloid scan when associated with amnesic

MCI is a powerful predictor of clinical progression and may be used in clinical practice to provide earlier diagnosis of AD and more accurate prognosis than can be achieved by clinical assessment alone. Amyloid imaging with memory assessment also identifies healthy older persons at high risk for clinical progression, which may prove useful for early intervention trials in preclinical AD that require a defined cognitive endpoint within a 3-year timeframe.

Acknowledgment

The AIBL study of ageing was funded by the Commonwealth Scientific Industrial Research Organization (CSIRO; a publicly funded government research organization), Science Industry Endowment Fund, National Health and Medical Research Council of Australia (project grant 1011689), Alzheimer's Association, Alzheimer's Drug Discovery Foundation, and an anonymous foundation.

Several coauthors were employees of CSIRO and contributed to study design, data collection, and analysis. None of the other entities had any role in the design and conduct of the study; collection, management, analysis, and interpretation of the data; preparation, review, or approval of the manuscript; or the decision to submit the manuscript for publication.

Authorship

C.C.R.: study design, analysis, funding, primary author. P.B.: image and data analysis. K.A.E.: study coordination, neuropsychology analysis. B.B.: imaging coordination, acquisition, analysis for Perth subjects. Y.Y.L.: statistical analysis, authorship contribution. R.Mu.: radiochemistry coordination, production. G.J.: image analysis, data management. P.M.: statistical analysis, authorship contribution. M.W.: recruitment, authorship contribution. R.P.: radiochemistry coordination, production for Perth. P.R.: imaging acquisition, authorship contribution. H.T.-D.: radiochemistry setup. G.O.: study setup, image analysis, data management. K.E.P.: cognitive analysis. P.Y.: data collection and analysis. C.S.: study management. O.S.: data analysis and storage. S.L.M.: study management. T.O.: funding, study management. R.H.: conception, setup, funding, management chair. L.C.: study funding, coordination, management cochair. G.S.: study design, data analysis. R.Ma.: conception, coordination. C.L.M.: study conception, funding, management, manuscript contribution and review. D.A.: study cochair, manuscript contribution and review. V.L.V.: data acquisition and analysis, statistical analysis and design, manuscript contribution and review.

Potential Conflicts of Interest

C.C.R.: consultancy, GE Healthcare, Navidea; grants/-grants pending, GE Healthcare, Bayer Schering Pharma, Piramal, Avid Radiopharmaceuticals, Lilly, AstraZeneca; speaking fees, Bayer Schering Pharma, GE Healthcare; paid educational presentations, GE Healthcare. P.B.: grants/grants pending, NHMRC. M.W.: consultancy, Eli Lilly. C.S.: grants/grants pending, Bayer, Piramal. O.S., S.L.M., T.O., R.H.: grants/grants pending, NHMRC. V.L.V.: grants/grants pending, NHMRC project grants, NHMRC research fellowship; speaking fees, Brain Receptor Mapping; paid manuscript preparation, Bayer Healthcare; travel expenses, European Association of Nuclear Medicine Annual Meeting 2013. P.B., O.S., S.L.M., T.O., R.H., and L.C. are employees of CSIRO, an Australian Government research organization that has filed a patent for amyloid imaging software.

References

1. McKhann G, Drachman D, Folstein M, et al. Clinical diagnosis of Alzheimer's disease: report of the NINCDS-ADRDA Work Group under the auspices of Department of Health and Human Services Task Force on Alzheimer's Disease. *Neurology* 1984;34:939-944.
2. Saito Y, Murayama S. Neuropathology of mild cognitive impairment. *Neuropathology* 2007;27:578-584.
3. Schneider JA, Arvanitakis Z, Leurgans SE, Bennett DA. The neuropathology of probable Alzheimer disease and mild cognitive impairment. *Ann Neurol* 2009;66:200-208.
4. Villemagne VL, Burnham S, Bourgeat P, et al. Amyloid beta deposition, neurodegeneration, and cognitive decline in sporadic Alzheimer's disease: a prospective cohort study. *Lancet Neurol* 2013;12:357-367.
5. Jack CR Jr, Wiste HJ, Lesnick TG, et al. Brain beta-amyloid load approaches a plateau. *Neurology* 2013;80:890-896.
6. Dubois B, Feldman HH, Jacova C, et al. Revising the definition of Alzheimer's disease: a new lexicon. *Lancet Neurol* 2010;9:1118-1127.
7. Dubois B, Feldman HH, Jacova C, et al. Research criteria for the diagnosis of Alzheimer's disease: revising the NINCDS-ADRDA criteria. *Lancet Neurol* 2007;6:734-746.
8. Albert MS, Dekosky ST, Dickson D, et al. The diagnosis of mild cognitive impairment due to Alzheimer's disease: recommendations from the National Institute on Aging-Alzheimer's Association workgroups on diagnostic guidelines for Alzheimer's disease. *Alzheimers Dement* 2011;7:270-279.
9. McKhann GM, Knopman DS, Chertkow H, et al. The diagnosis of dementia due to Alzheimer's disease: recommendations from the National Institute on Aging-Alzheimer's Association workgroups on diagnostic guidelines for Alzheimer's disease. *Alzheimers Dement* 2011;7:263-269.
10. Sperling RA, Aisen PS, Beckett LA, et al. Toward defining the pre-clinical stages of Alzheimer's disease: recommendations from the National Institute on Aging-Alzheimer's Association workgroups on diagnostic guidelines for Alzheimer's disease. *Alzheimers Dement* 2011;7:280-292.
11. Ellis KA, Bush AI, Darby D, et al. The Australian Imaging, Biomarkers and Lifestyle (AIBL) study of aging: methodology and

- baseline characteristics of 1112 individuals recruited for a longitudinal study of Alzheimer's disease. *Int Psychogeriatr* 2009;21:672–687.
12. Rowe CC, Ellis KA, Rimajova M, et al. Amyloid imaging results from the Australian Imaging, Biomarkers and Lifestyle (AIBL) study of aging. *Neurobiol Aging* 2010;31:1275–1283.
 13. Petersen RC, Smith GE, Waring SC, et al. Mild cognitive impairment: clinical characterization and outcome. *Arch Neurol* 1999;56:303–308.
 14. Winblad B, Palmer K, Kivipelto M, et al. Mild cognitive impairment—beyond controversies, towards a consensus: report of the International Working Group on Mild Cognitive Impairment. *J Intern Med* 2004;256:240–246.
 15. Good CD, Johnsrude IS, Ashburner J, et al. A voxel-based morphometric study of ageing in 465 normal adult human brains. *Neuroimage* 2001;14:21–36.
 16. Van Leemput K, Maes F, Vandermeulen D, Suetens P. Automated model-based bias field correction of MR images of the brain. *IEEE Trans Med Imaging* 1999;18:885–896.
 17. Collins DL, Zijdenbos AP, Kollokian V, et al. Design and construction of a realistic digital brain phantom. *IEEE Trans Med Imaging* 1998;17:463–468.
 18. Bourgeat P, Chetelat G, Villemagne VL, et al. Beta-amyloid burden in the temporal neocortex is related to hippocampal atrophy in elderly subjects without dementia. *Neurology* 2010;74:121–127.
 19. Greiner M, Sohr D, Gobel P. A modified ROC analysis for the selection of cut-off values and the definition of intermediate results of serodiagnostic tests. *J Immunol Methods* 1995;185:123–132.
 20. Knopman DS, Jack CR Jr, Wiste HJ, et al. Short-term clinical outcomes for stages of NIA-AA preclinical Alzheimer disease. *Neurology* 2012;78:1576–1582.
 21. Morris JC, Roe CM, Grant EA, et al. Pittsburgh compound B imaging and prediction of progression from cognitive normality to symptomatic Alzheimer disease. *Arch Neurol* 2009;66:1469–1475.
 22. Perry RJ, Hodges JR. Relationship between functional and neuropsychological performance in early Alzheimer disease. *Alzheimer Dis Assoc Disord* 2000;14:1–10.
 23. Lim YY, Ellis KA, Harrington K, et al. Cognitive decline in adults with amnesic mild cognitive impairment and high amyloid- β : prodromal Alzheimer's disease? *J Alzheimers Dis* 2013;33:1167–1176.
 24. Sarazin M, Berr C, De Rotrou J, et al. Amnesic syndrome of the medial temporal type identifies prodromal AD: a longitudinal study. *Neurology* 2007;69:1859–1867.
 25. Landau SM, Harvey D, Madison CM, et al. Comparing predictors of conversion and decline in mild cognitive impairment. *Neurology* 2010;75:230–238.
 26. Petersen RC. Mild cognitive impairment. *Lancet* 2006;367:1979.
 27. Wolk DA, Price JC, Saxton JA, et al. Amyloid imaging in mild cognitive impairment subtypes. *Ann Neurol* 2009;65:557–568.
 28. Nordberg A, Carter SF, Rinne J, et al. A European multicentre PET study of fibrillar amyloid in Alzheimer's disease. *Eur J Nucl Med Mol Imaging* 2013;40:104–114.
 29. Koivunen J, Scheinin N, Virta JR, et al. Amyloid PET imaging in patients with mild cognitive impairment: a 2-year follow-up study. *Neurology* 2011;76:1085–1090.
 30. Lorenzi M, Donohue M, Paternico D, et al. Enrichment through biomarkers in clinical trials of Alzheimer's drugs in patients with mild cognitive impairment. *Neurobiol Aging* 2010;31:1443–1451, 1451.e1.
 31. Knopman DS, DeKosky ST, Cummings JL, et al. Practice parameter: Diagnosis of dementia (an evidence based review). Report of the Quality Standards Subcommittee of the American Academy of Neurology. *Neurology* 2001;56:1143–1153.
 32. Delis DC, Kramer JH, Kaplan E, Ober BA. CVLT-II: California Verbal Learning Test. 2nd ed, adult version. San Antonio, TX: Psychological Corporation, 2000.
 33. van Rossum IA, Vos S, Handels R, Visser PJ. Biomarkers as predictors for conversion from mild cognitive impairment to Alzheimer-type dementia: implications for trial design. *J Alzheimers Dis* 2010;20:881–891.
 34. Johnson KA, Minoshima S, Bohnen NI, et al. Appropriate use criteria for amyloid PET: a report of the Amyloid Imaging Task Force (AIT), the Society of Nuclear Medicine and Molecular Imaging (SNMMI) and the Alzheimer Association (AA). *J Nucl Med* 2013;54:476–490.
 35. Mormino EC, Brandel MG, Madison CM, et al. Not quite PIB-positive, not quite PIB-negative: slight PIB elevations in elderly normal control subjects are biologically relevant. *Neuroimage* 2012;59:1152–1160.
 36. Klunk WE. Classification of amyloid-positivity in controls: comparison of objective approaches to visual reads. Paper presented at: Human Amyloid Imaging Conference; April 11, 2008; Chicago, IL.
 37. Aizenstein HJ, Nebes RD, Saxton JA, et al. Frequent amyloid deposition without significant cognitive impairment among the elderly. *Arch Neurol* 2008;65:1509–1517.
 38. Rowe CC, Ng S, Ackermann U, et al. Imaging beta-amyloid burden in aging and dementia. *Neurology* 2007;68:1718–1725.