

Edith Cowan University Research Online

[ECU Posters](#)

[Audio-Visual Collections](#)

2013

My Research Online: What's in it for me?

Janice Chan
Edith Cowan University

Gordon McIntyre
Edith Cowan University

Julia Gross
Edith Cowan University

Lisa K. Billingham
Edith Cowan University

Kay Saunders
Edith Cowan University

See next page for additional authors

Follow this and additional works at: <https://ro.ecu.edu.au/ecuposters>

 Part of the [Library and Information Science Commons](#)

This poster was produced by an informal learning group which comprises ECU library and ITSC staff who are interested in developing data analysis and visualisation skills.

Recommended Citation

Chan, Janice; McIntyre, Gordon; Gross, Julia; Billingham, Lisa K.; Saunders, Kay; and Wong, Paul, "My Research Online: What's in it for me?" (2013). *ECU Posters*.
<https://ro.ecu.edu.au/ecuposters/1>

This Book is posted at Research Online.
<https://ro.ecu.edu.au/ecuposters/1>

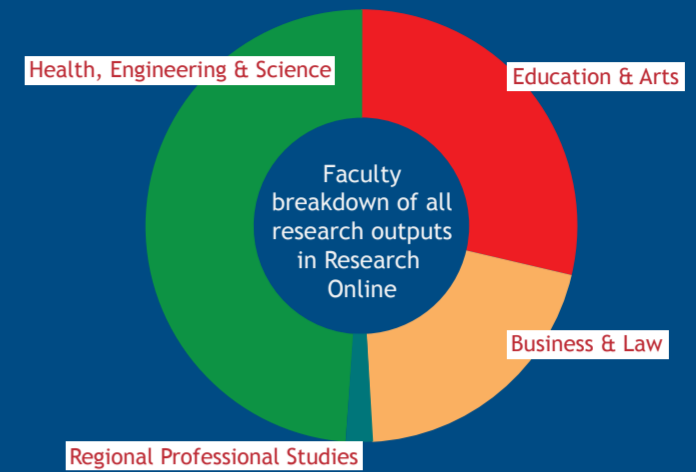
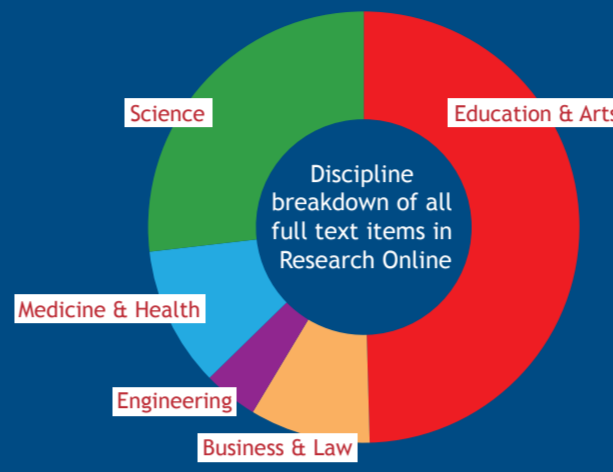
Authors

Janice Chan, Gordon McIntyre, Julia Gross, Lisa K. Billingham, Kay Saunders, and Paul Wong

My Research Online

What's in it for me?

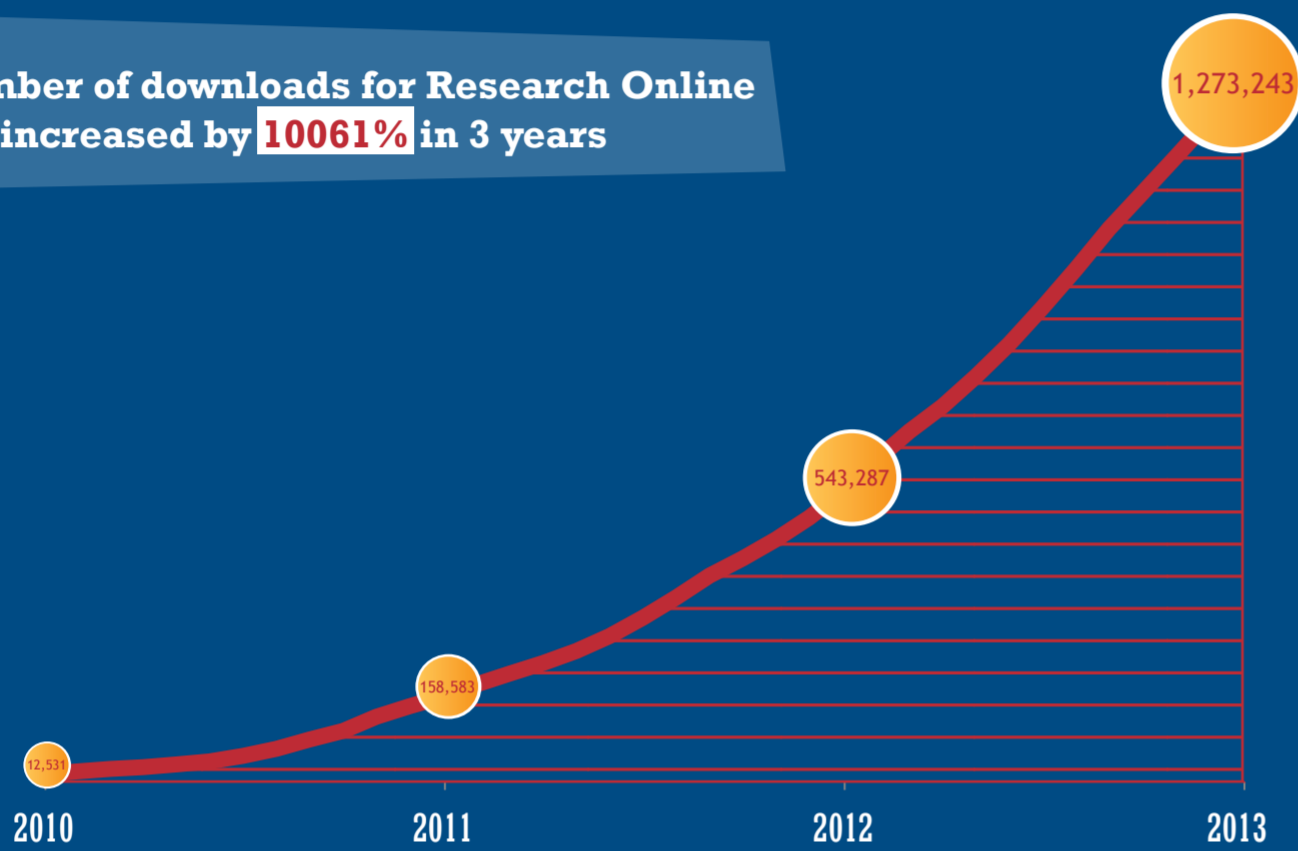
ECU's world class research is showcased in the institutional repository, Research Online. Research Online can help you expand the reach of your work and raise your research profile.



Visibility

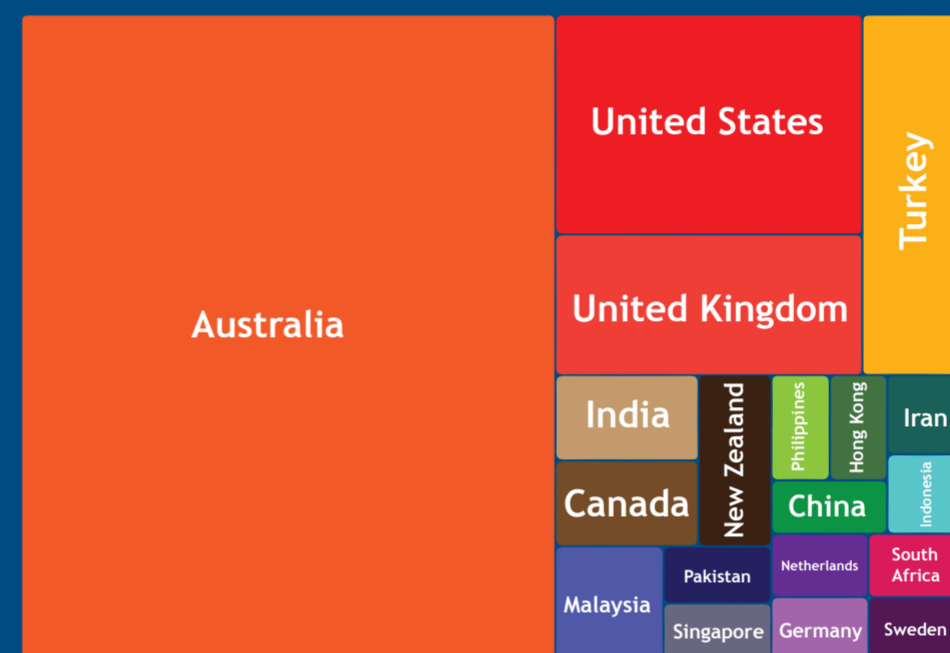
Having your work in the institutional repository raises the profile of your research and helps to grow your web presence. Research Online manages and preserves your work for the long term.

Number of downloads for Research Online has increased by **10061%** in 3 years



Readership

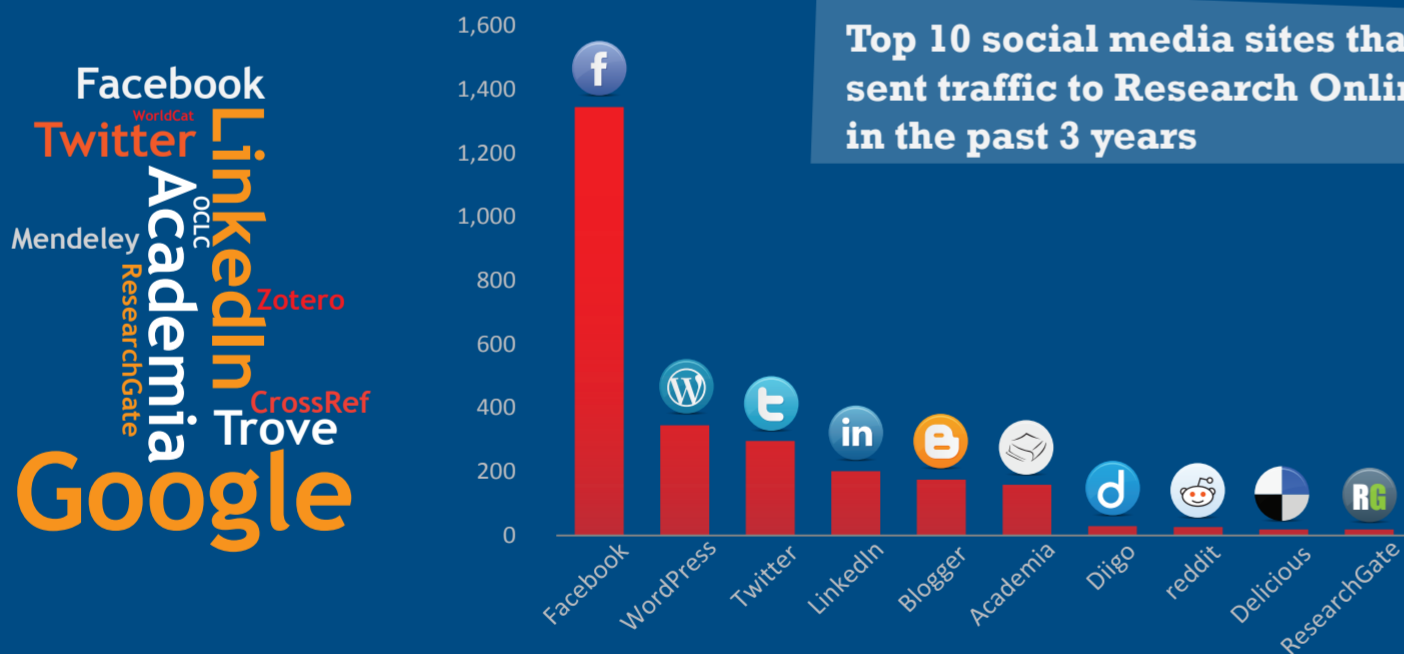
Research Online is an open access repository, so that copies of your work can reach a worldwide audience. Research Online lets you share your work with colleagues, no matter where they are.



Top 20 geographical locations of Research Online visitors in the past 3 years

Discoverability

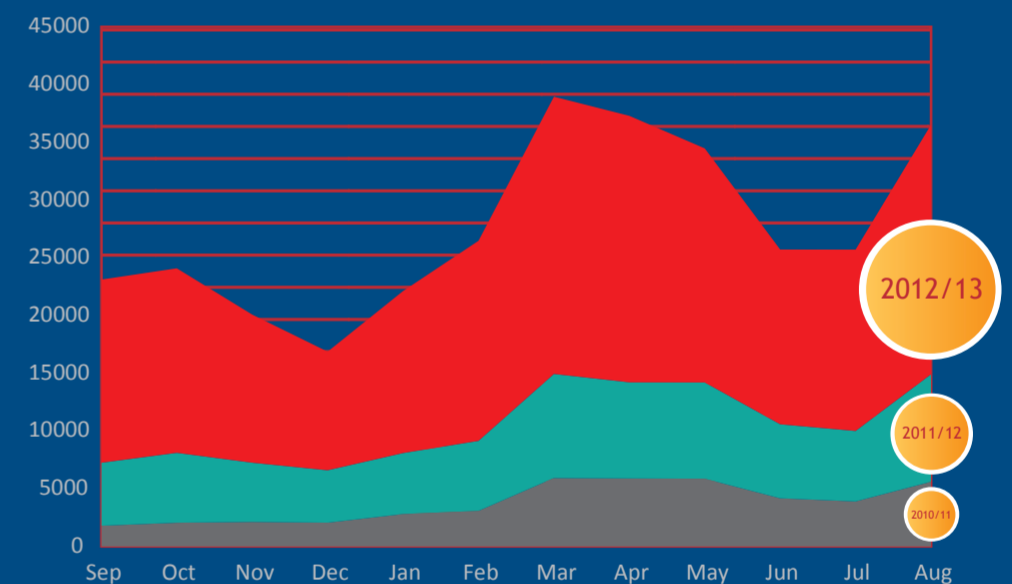
Having your work in Research Online means it will be easily discovered via search engines, on social media and on the internet generally. Once your research is found it will generate interest and facilitate research collaboration.



Top 10 social media sites that sent traffic to Research Online in the past 3 years

Number of new visitors have increased by **354%** in 3 years

Our institutional repository is part of a worldwide research commons: the Digital Commons.

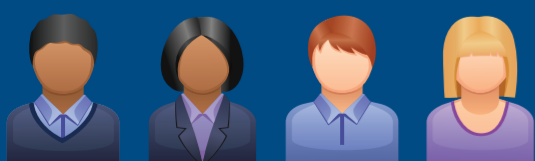


Publicity



Personal Researcher Profiles
Be seen and be found

Personal Researcher Profiles in Research Online are permanent and portable. They help you to grow your web presence, share your work with colleagues, and link your research to your profile. Research funders will be able to access your publications and track records via the institutional repository. Research Online and Personal Researcher Profiles are search engine optimised, giving your name and content higher ranking in Google search results.



Author Dashboard



Search Queries

Provides the keyword phrases that successively led searchers to your works in Research Online; This includes the number of downloads that resulted from each of these keyword searches.



Downloads

A graphical representation of the number of downloads to all of your works in Research Online over a specified time period.



Institutions

Evidence relating to the level of engagement of institutions with your works. More specifically, the number of downloads to your articles attributable to particular institutions.



Referrers

The number of downloads to your works that have resulted from referrals to your works from particular web pages.

Social Media Activity Tracking



An Altmetric badge has been added in Research Online; it captures the social media activity surrounding a given work, including:

- The number and nature of discussions made to a given article, as captured through tweets, Facebook and blog posts, reviews and news stories.
- The number of people who are reading a given article, as reflected in the number of bookmarks to the article on citation managers such as Mendeley.
- A geographical and demographical breakdown of this social media engagement.

The badge will appear for records that have a DOI (an identifier unique to a specific article).

Contact us

For more information on how you can take advantage of Research Online, contact the Library Research Services team ResearchOnline@ecu.edu.au



Research Online