

Induced Pluripotent Stem Cells from Subjects with Lesch-Nyhan Disease

Diane J. Sutcliffe,^{1*} Ashok R. Dinasarapu,^{2*} Jasper E. Visser,^{3,4} Joery den Hoed,¹ Fatemeh Seifar,^{1,5} Piyush Joshi,¹ Irene Ceballos-Picot,⁶ Tejas Sardar,¹ Ellen J. Hess,^{1,5,7} Yan V. Sun,⁸ Zhexing Wen,^{1,9,10} Michael E. Zwick,^{2,11} H. A. Jinnah^{1,2,5,11.*}

1. Department of Neurology; Emory University School of Medicine, Atlanta, GA 30322
2. Department of Human Genetics; Emory University School of Medicine, Atlanta, GA 30322
3. Department of Neurology; Donders Institute for Brain, Cognition and Behavior, Radboud University Medical Center; Nijmegen, The Netherlands
4. Department of Neurology, Amphia Hospital, Breda, The Netherlands
5. Neurosciences Graduate Program, Graduate Division of Biological and Biomedical Sciences, Laney Graduate School, Emory University, 30322
6. Laboratoire de Biochimie Métabolique et Protéomique; Hôpital Universitaire Necker
7. Department of Pharmacology and Chemical Biology; Emory University School of Medicine, Atlanta, GA 30322
8. Department of Epidemiology; Emory University Rollins School of Public Health, Atlanta, GA. 30322
9. Department of Psychiatry & Behavioral Sciences; Emory University School of Medicine, Atlanta, GA 30322
10. Department of Cell Biology; Emory University School of Medicine, Atlanta, GA 30322
11. Department of Pediatrics; Emory University School of Medicine, Atlanta, GA 30322

*Co-First Authors

*Correspondence:

H. A. Jinnah, M.D., Ph.D.

Professor, Departments of Neurology, Human Genetics & Pediatrics

Emory University, 101 Woodruff Circle, 6305 Woodruff Memorial Building

Atlanta GA, 30322

E-mail: hjinnah@emory.edu

Supplementary Material

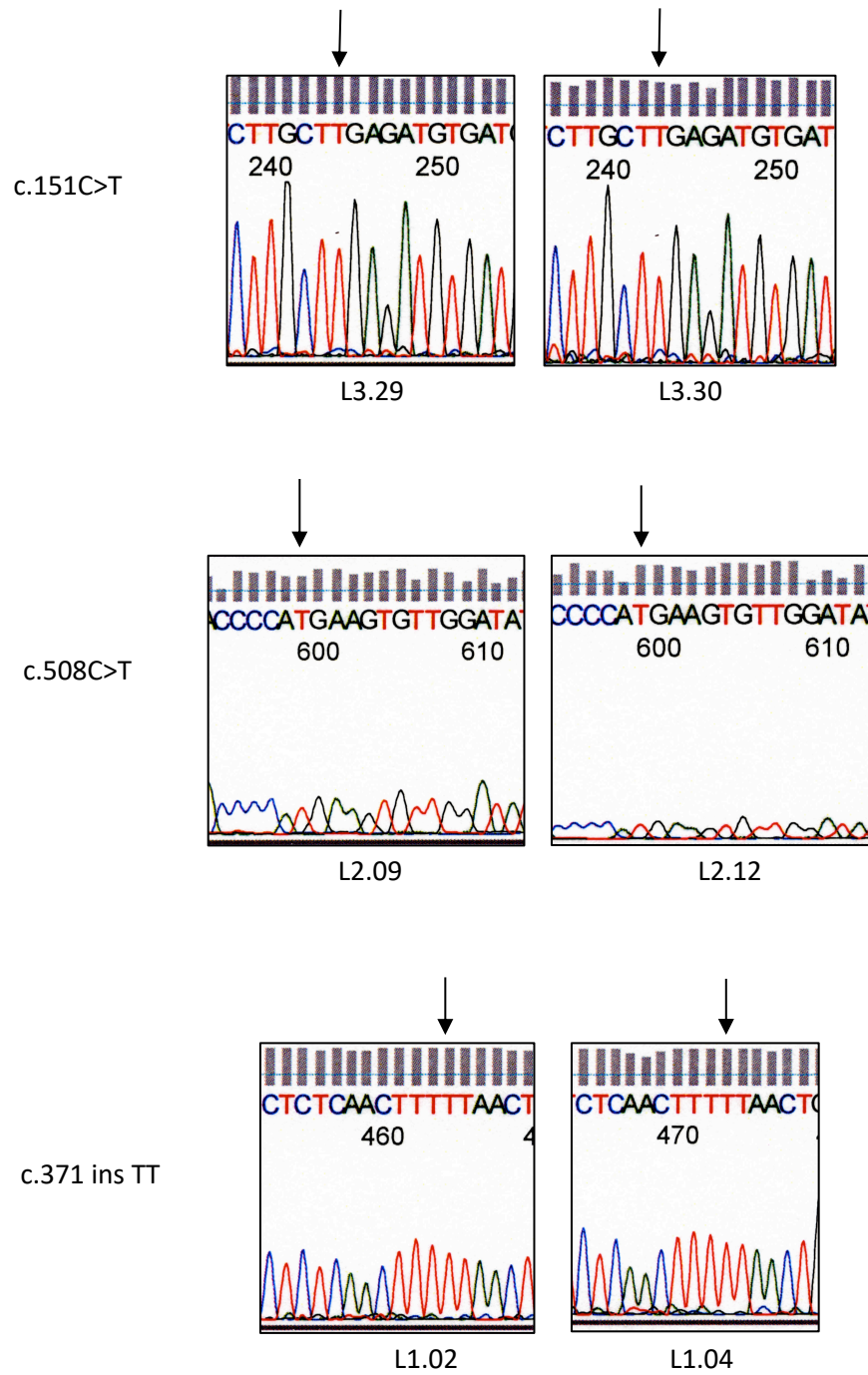
Supplementary Figure 1. Gene sequencing results for confirmation of LND gene variants.

Supplementary Figure 2. Karyotypes for each LND and control line.

Supplementary Figure 3. Quantitative PCR confirmation of selected findings from RNAseq.

Supplementary Figure 4. Western blot confirmation of selected findings from proteomics.

Supplementary Figure 1. Gene sequencing results for confirmation of LND gene variants



Supplementary Figure 2. Karyotypes for each LND and control line

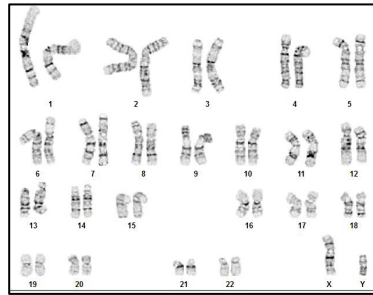
Control Karyotypes

LND Karyotypes

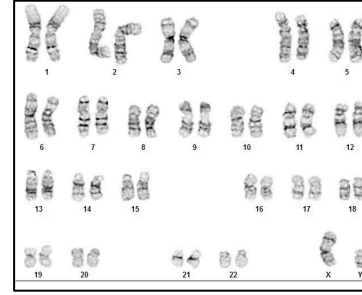
C1.02



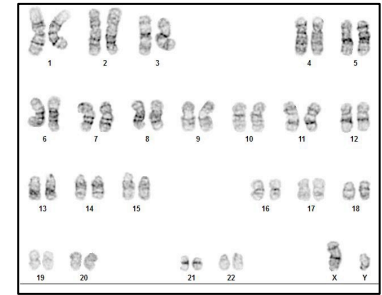
C1.03



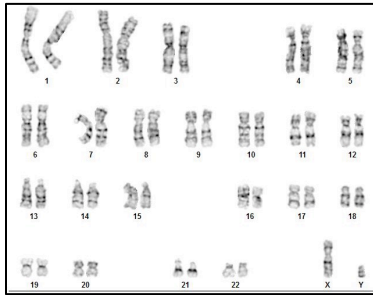
L2.09



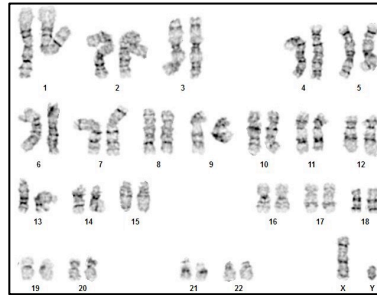
L2.12



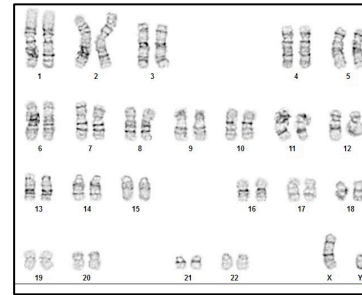
C2.04



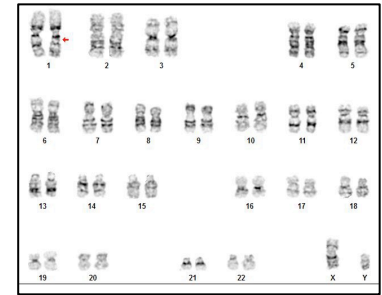
C2.06



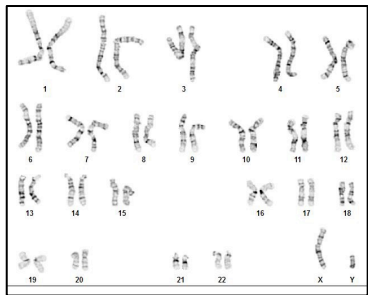
L3.29



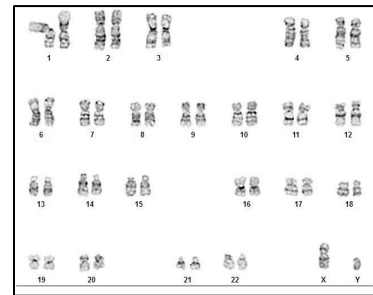
L3.30



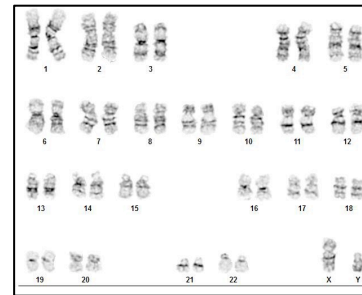
C3.05



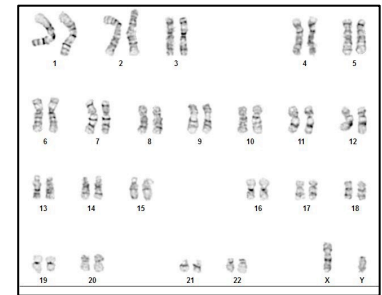
C3.08



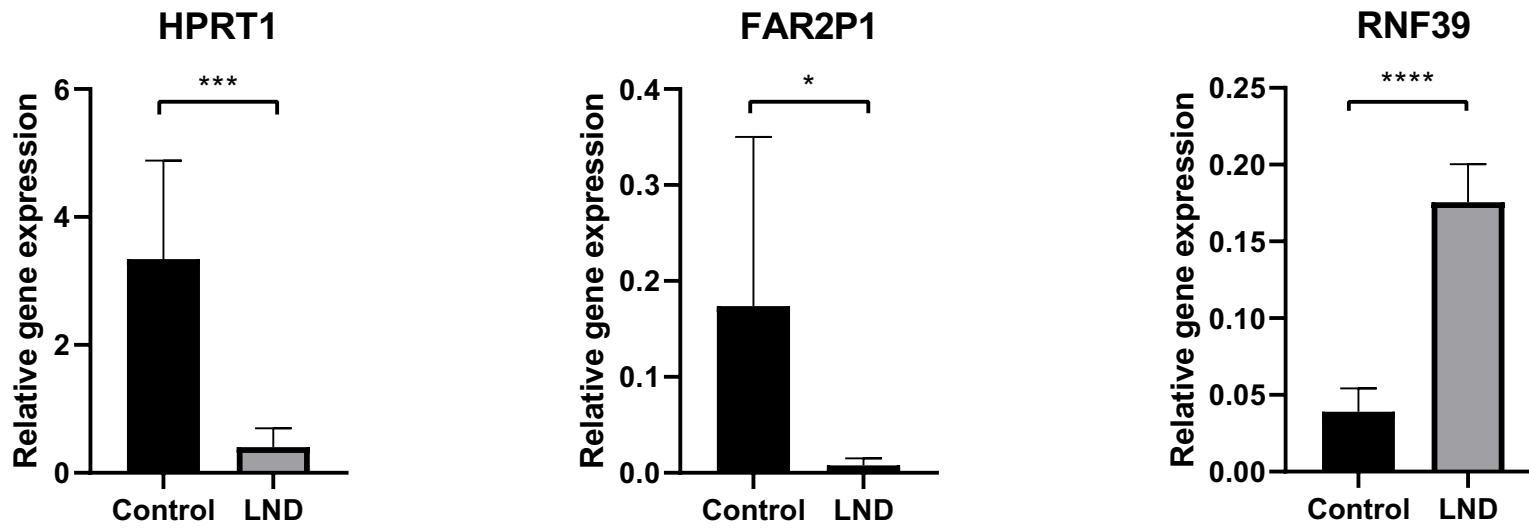
L1.02



L1.04



Supplementary Figure 3. Quantitative PCR confirmation of selected findings from RNAseq



Supplementary Figure 4. Western blot confirmation of selected findings from proteomics.

