



CAZymes in *Maribacter dokdonensis* 62–1 From the Patagonian Shelf: Genomics and Physiology Compared to Related Flavobacteria and a Co-occurring *Alteromonas* Strain

Laura A. Wolter^{1,2}, Maximilian Mitulla¹, Jovan Kalem³, Rolf Daniel⁴, Meinhard Simon¹ and Matthias Wietz^{1,5*}

¹ Institute for Chemistry and Biology of the Marine Environment, Oldenburg, Germany, ² JST ERATO Nomura Project, Faculty of Life and Environmental Sciences, Tsukuba, Japan, ³ Faculty of Biology, University of Belgrade, Belgrade, Serbia, ⁴ Genomic and Applied Microbiology and Göttingen Genomics Laboratory, Institute of Microbiology and Genetics, Georg-August-University, Göttingen, Germany, ⁵ Alfred Wegener Institute Helmholtz Centre for Polar and Marine Research, Bremerhaven, Germany

OPEN ACCESS

Edited by:

Chao Liang,
Institute of Applied Ecology (CAS),
China

Reviewed by:

Abbot Okotie Oghenekaro,
University of Manitoba, Canada
Ahmed Gomaa,
National Research Centre, Egypt

*Correspondence:

Matthias Wietz
matthias.wietz@awi.de

Specialty section:

This article was submitted to
Aquatic Microbiology,
a section of the journal
Frontiers in Microbiology

Received: 11 November 2020

Accepted: 10 March 2021

Published: 12 April 2021

Citation:

Wolter LA, Mitulla M, Kalem J, Daniel R, Simon M and Wietz M (2021) CAZymes in *Maribacter dokdonensis* 62–1 From the Patagonian Shelf: Genomics and Physiology Compared to Related Flavobacteria and a Co-occurring *Alteromonas* Strain. *Front. Microbiol.* 12:628055. doi: 10.3389/fmicb.2021.628055

Carbohydrate-active enzymes (CAZymes) are an important feature of bacteria in productive marine systems such as continental shelves, where phytoplankton and macroalgae produce diverse polysaccharides. We herein describe *Maribacter dokdonensis* 62–1, a novel strain of this flavobacterial species, isolated from alginate-supplemented seawater collected at the Patagonian continental shelf. *M. dokdonensis* 62–1 harbors a diverse array of CAZymes in multiple polysaccharide utilization loci (PUL). Two PUL encoding polysaccharide lyases from families 6, 7, 12, and 17 allow substantial growth with alginate as sole carbon source, with simultaneous utilization of mannuronate and guluronate as demonstrated by HPLC. Furthermore, strain 62-1 harbors a mixed-feature PUL encoding both ulvan- and fucoidan-targeting CAZymes. Core-genome phylogeny and pangenome analysis revealed variable occurrence of these PUL in related *Maribacter* and *Zobellia* strains, indicating specialization to certain “polysaccharide niches.” Furthermore, lineage- and strain-specific genomic signatures for exopolysaccharide synthesis possibly mediate distinct strategies for surface attachment and host interaction. The wide detection of CAZyme homologs in algae-derived metagenomes suggests global occurrence in algal holobionts, supported by sharing multiple adaptive features with the hydrolytic model flavobacterium *Zobellia galactanivorans*. Comparison with *Alteromonas* sp. 76-1 isolated from the same seawater sample revealed that these co-occurring strains target similar polysaccharides but with different genomic repertoires, coincident with differing growth behavior on alginate that might mediate ecological specialization. Altogether, our study contributes to the perception of *Maribacter* as versatile flavobacterial polysaccharide degrader, with implications for biogeochemical cycles, niche specialization and bacteria-algae interactions in the oceans.

Keywords: alginate, fucoidan, ulvan, PUL, macroalgae, EPS, pangenome, *Zobellia galactanivorans*

INTRODUCTION

Continental shelves are productive marine systems, where photosynthesis by pelagic phytoplankton and benthic macroalgae yields considerable amounts of organic matter. Polysaccharides constitute a major fraction of the algae-derived organic matter, with important roles in nutrient cycles and microbial metabolism (Hehemann et al., 2014; Arnosti et al., 2021). Consequently, diverse bacteria are specialized for the degradation of algal polysaccharides, colonization of algal surfaces and other types of biological interactions (van der Loos et al., 2019; Ferrer-González et al., 2020; Wolter et al., 2021).

Cultured bacterial strains are a valuable resource for studying the ecological and biogeochemical implications of microbial polysaccharide degradation, complementing molecular and metagenomic approaches on community level (Arnosti et al., 2011; Wietz et al., 2015; Matos et al., 2016; Reintjes et al., 2017; Grieb et al., 2020). Culture-based studies revealed the diversity and functionality of carbohydrate-active enzymes (CAZymes), which encompass polysaccharide lyases (PL), glycoside hydrolases (GH), carbohydrate-binding modules (CBM), carbohydrate esterases (CE), glycosyl transferases (GT), and auxiliary carbohydrate-active oxidoreductases (Lombard et al., 2014). CAZyme-encoding genes are frequently transferred between microbes, providing effective mechanisms of adaptation and niche specialization (Hehemann et al., 2016).

Flavobacteria, including the families *Flavobacteriaceae* and *Cryomorphaceae*, are major contributors to marine polysaccharide degradation. Comparable to the human gut, marine flavobacteria can degrade various polysaccharides through dedicated genetic machineries (Teeling et al., 2012; Fernández-Gómez et al., 2013). Flavobacterial CAZymes are typically clustered with *susCD* genes in polysaccharide utilization loci (PUL) for orchestrated uptake and degradation (Grondin et al., 2017). For instance, the marine flavobacterium *Zobellia galactanivorans* has complex biochemical and regulatory mechanisms for degrading laminarin, alginate, agar, and carrageenan (Hehemann et al., 2012; Thomas et al., 2012, 2017; Labourel et al., 2014; Ficko-Blean et al., 2017; Zhu et al., 2017). Comparable abilities have been described in the flavobacterial genera *Formosa agariphila* and *Gramella forsetii* through diverse PUL (Mann et al., 2013; Kabisch et al., 2014; Reisky et al., 2019). Also *Maribacter*, the “sister genus” of *Zobellia*, exhibits hydrolytic activity (Bakunina et al., 2012; Zhan et al., 2017). Accordingly, both *Maribacter* and *Zobellia* are abundant on macroalgal surfaces (Martin et al., 2015), and related PUL have been detected during phytoplankton blooms in the North Sea (Kappelman et al., 2019). Furthermore, several *Maribacter* and *Zobellia* strains stimulate algal development by producing morphogenesis factors (Matsuo et al., 2005; Weiss et al., 2017). Hence, both genera are important from ecological and biotechnological perspectives.

Here, we describe CAZyme content and hydrolytic capacities of *Maribacter dokdonensis* strain 62–1, isolated from an alginate-supplemented microcosm at the Patagonian continental shelf (Wietz et al., 2015). This highly productive marine region harbors frequent phytoplankton blooms and abundant coastal macroalgae, indicating regular availability

of polysaccharides (Acha et al., 2004; Garcia et al., 2008). Our CAZyme characterization in the pangenomic context illustrates the role of CAZymes, PUL and exopolysaccharide-related genes in niche specialization among *Maribacter* and *Zobellia*. The finding of diverse traits for interactions with algae, together with the detection of CAZyme homologs in macroalgae-derived metagenomes, highlight the predisposition of *Maribacter* spp. to algae-related niches and substrates. Notably, *Maribacter dokdonensis* 62–1 has been isolated from the same sample as *Alteromonas* sp. 76–1 with shown capacities for alginate and ulvan degradation (Koch et al., 2019b), illustrating that distantly related hydrolytic strains co-occur in the same habitat. Comparison of their CAZyme machineries illuminated whether these strains might employ different ecophysiological strategies or compete for resources. These eco-evolutionary perspectives into CAZyme diversity and corresponding niche specialization contribute to the understanding of ecophysiological adaptations behind community-level polysaccharide degradation (Teeling et al., 2012, 2016). Considering the abundance and biogeochemical relevance of algal polysaccharides, our study adds further evidence to the eco-evolutionary role of CAZymes in marine flavobacteria.

MATERIALS AND METHODS

Isolation and Cultivation

Strain 62–1 was isolated in April 2012 from a microcosm with surface seawater collected at the Patagonian continental shelf (47.944722 S, 61.923056 W) amended with 0.001% sodium alginate (Wietz et al., 2015). Purity was confirmed by PCR amplification of the 16S rRNA gene after several rounds of subculturing. Alginate utilization was analyzed in seawater minimal medium (SWM) (Zech et al., 2009) supplemented with 0.2% sodium alginate (cat. no. A2158; Sigma-Aldrich, St. Louis, MO) as sole carbon source in comparison to SWM + 0.4% glucose. Precultures were grown from single colonies for 24 h, washed three times with sterile SWM, and adjusted to an optical density of 0.1 measured at 600 nm (OD600). Main cultures were inoculated with 1% (v/v) of washed preculture in triplicate, followed by cultivation at 20°C and 100 rpm with regular photometric measurements (diluted if OD600 > 0.4).

Substrate Quantification

At each OD measurement, subsamples of 5 mL were filtered through 0.22 µm polycarbonate filters into combusted glass vials and stored at –20°C. Alginate concentrations were quantified by High Performance Liquid Chromatography (HPLC) of its monomers mannuronate and guluronate after chemical hydrolysis (20 h, 100°C, 0.1 M HCl) in combusted and sealed glass ampoules. Samples were neutralized with 6 N NaOH, desalted using DionexOnGuard II Ag/H cartridges (Thermo Fisher Scientific, Waltham, MA), and eluted with 100 mM sodium acetate tri-hydrate in 100 mM NaOH. Concentrations were determined in three dilutions per sample (0.01, 0.002, 0.001%) using a CarboPac PA 1 column (Thermo Fisher Scientific) and pulsed amperometric detection according to

Mopper et al. (1992). A calibration curve was generated using hydrolyzed 1% alginate solution ($R^2 = 0.97$). Glucose concentrations were measured using samples diluted to 0.001% with MilliQ followed by HPLC with NaOH (18 mM) as eluent and a CarboPac PA 1 column (Thermo Fisher Scientific). A calibration curve was generated using 24 concentrations from 0.025 to 10 μ M glucose ($R^2 = 0.99$).

Genome Sequencing and Taxonomy

Genomic DNA was extracted using the PeqGold DNA Isolation Kit (PEQLAB, Germany) according to the manufacturer's instructions. The genome was sequenced with Illumina technology using a GAIIX sequencing platform on paired-end libraries prepared with the Nextera XT DNA Kit (Illumina, San Diego, CA). A total of 83 contigs (0.5–330 kb, average 55 kb) were assembled using SPAdes v3.0 (Bankevich et al., 2012), followed by error correction using BayesHammer (Nikolenko et al., 2013) and gene prediction using the IMG pipeline (Markowitz et al., 2012). The draft genome has been converted to EMBL format using EMBLmyGFF3 (Norling et al., 2018) and deposited at ENA under PRJEB40942. Phylogenetic analysis was carried out with 92 core genes identified using UBCG (Na et al., 2018), with *Capnocytophaga ochracea* DSM 7271 as outgroup. The resulting nucleotide alignment was visually confirmed for consistency and the best substitution model (GTR + G) computed using ModelTest-NG (Darrriba et al., 2020). A maximum-likelihood phylogeny with 1000 bootstrap replicates was calculated using RaxML v8.2 (Stamatakis, 2014) on the CIPRES Science Gateway (Miller et al., 2010).

Comparative Genomics

Genomes of 62–1 and related strains (**Supplementary Table 1**) were compared using bioinformatic software. Average nucleotide identities were calculated using the Enveomics web application (Rodriguez-R and Konstantinidis, 2016). Core, accessory and unique genes were identified from protein-translated genes using OrthoFinder (Emms and Kelly, 2019) using a 30% identity cutoff. CAZymes were identified using dbCAN2 (Zhang et al., 2018), only considering hits with e -value $< 10^{-15}$ and $> 65\%$ query coverage. Gene annotations and PUL boundaries were manually curated based on the CAZY and UniprotKB-Swissprot databases (Lombard et al., 2014; Bateman et al., 2017). Sulfatases were identified using SulfAtlas v1.1 (Barbeyron et al., 2016a), only considering hits with e -value $< 10^{-1}$ and $> 40\%$ query coverage. Genes were assigned to KEGG classes and pathways using KAAS and KEGG Mapper (Moriya et al., 2007; Kanehisa and Sato, 2020). PUL homologies were analyzed by custom-BLAST in Geneious Pro v7¹ and PULDB (Terrapon et al., 2018). Genes for downstream processing of alginate monomers (*kdgA*, *kdgF*, *kdgK*, and *dehR*) were identified by searching homologs from *Gramella forsetii* (NCBI assembly GCA_000060345.1). Putative *kduI* and *kduD* genes for processing unsaturated uronates were identified by searching homologs from *Gramella flava* (NCBI assembly GCA_001951155.1). Signal peptides were predicted using SignalP v5.0 (Almagro Armenteros et al., 2019).

¹<https://www.geneious.com>

Statistical Evaluation and Data Visualization

Data were processed in RStudio² using R v3.6 (R Core Team, 2018) and visualized using packages ggplot2, PNWColors and pheatmap (Wickham, 2016; Kolde, 2018; Lawlor, 2020). Code and files for reproducing the analysis are available under <https://github.com/matthiaswitez/Maribacter>.

RESULTS AND DISCUSSION

Strain 62–1 was isolated from alginate-supplemented seawater collected at the Patagonian continental shelf (Witez et al., 2015). Colonies on solid medium are round, smooth, and yellowish-colored. Genome sequencing resulted in a draft genome (83 contigs) with a cumulative length of 4.6 Mb, encoding 4,103 predicted proteins. Core genome-based phylogeny revealed clear assignment to *Maribacter* from the *Flavobacteriaceae* (**Figure 1**), with 99.8% 16S rRNA gene similarity and 97.8% average nucleotide identity to *Maribacter dokdonensis* DSW-8^T (**Supplementary Figure 1**). Hence, strain 62–1 is a novel member of this flavobacterial species. *M. dokdonensis* DSW-8^T originates from South Korean and hence subtropical waters, demonstrating occurrence of closely related strains on global scales.

CAZymes in the Phylogenomic Context

Maribacter dokdonensis strain 62–1 encodes 90 putative CAZymes predicted by dbCAN2, corresponding to 2% of all protein-encoding genes (**Table 1** and **Supplementary Table 1**). As described in detail below, CAZymes commonly clustered with *susCD* genes, the hallmark of PUL in *Bacteroidetes* (Grondin et al., 2017). The presence of 12 polysaccharide lyases from PL families 6, 7, 12, and 17 illustrates specialization toward alginate, confirmed by physiological experiments (**Figure 2**). Most PL12 are classified as heparinases, but co-localization with known alginate lyase families indicates alginolytic activity. Strain 62–1 furthermore encodes PL33 and PL40 lyases that potentially target ulvan (**Table 1**). CAZyme numbers and diversity match the hydrolytic potential of related *Maribacter* and *Zobellia* strains included for comparison (**Supplementary Table 1**), corroborating the adaptation of these taxa to algal substrates and surfaces (Bakunina et al., 2012; Martin et al., 2015; Kwak et al., 2017; Zhan et al., 2017; Chernysheva et al., 2019).

We contextualized CAZyme patterns with phylogenetic relationships (**Figure 1** and **Supplementary Table 2**) and a general overview of the *Maribacter* pangenome (**Supplementary Table 3**). Core genome-based phylogeny resolved three lineages, each with distinct signatures of CAZymes and exopolysaccharide-related genes (**Figure 1**). *Maribacter* lineages 1 and 2 encode more PLs than lineage 3 (Wilcoxon rank-sum test, $p = 0.01$), including an entire additional PUL for alginate degradation. Moreover, one PL7 and one PL12 are unique to lineage 1 (see detailed paragraph below). In contrast, a sizeable PUL encoding a PL10 pectate lyase with CE8 methyltransferase domain is restricted to lineage 3 (**Figure 1**). This PL10-CE8

²<https://rstudio.com>

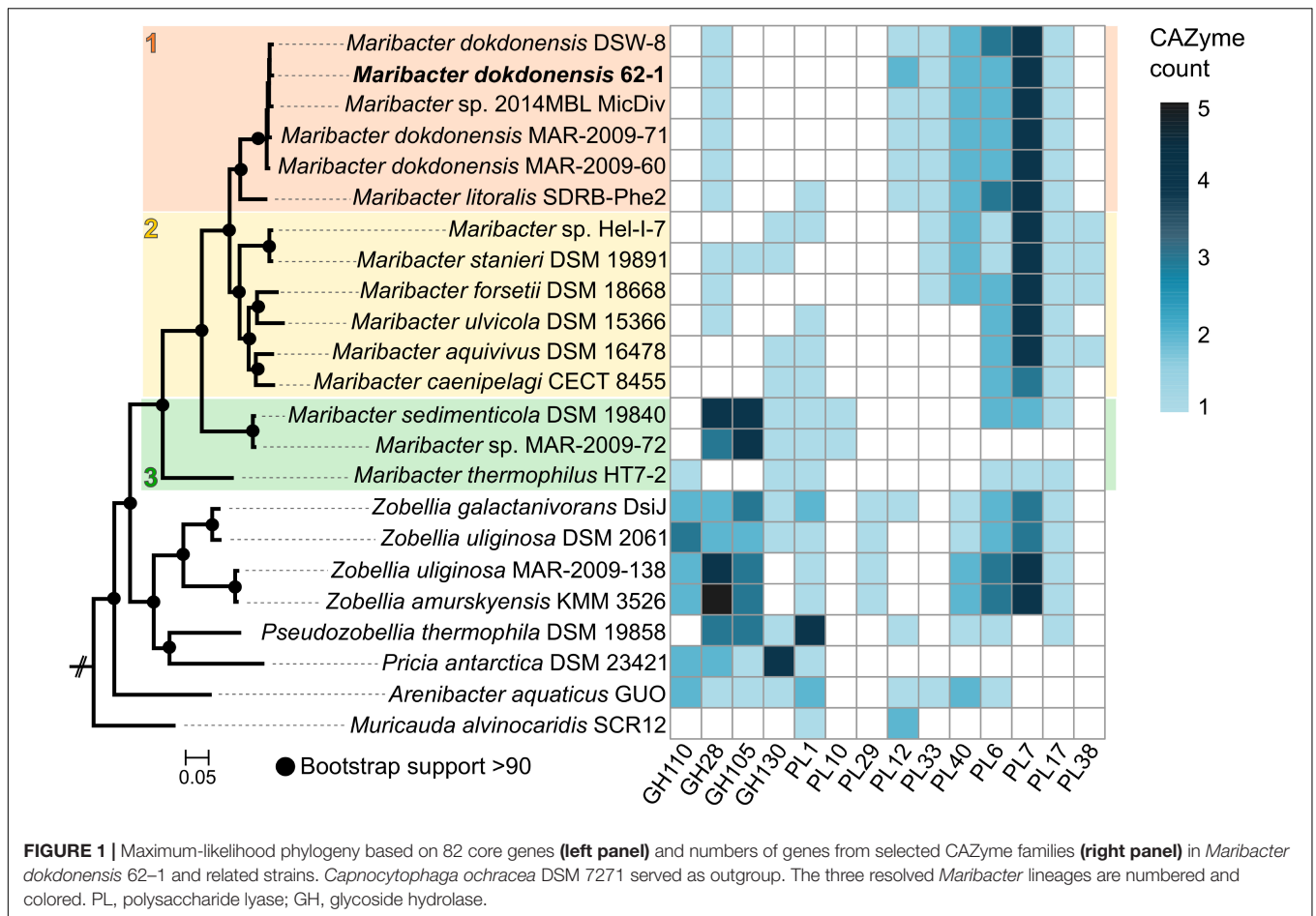


FIGURE 1 | Maximum-likelihood phylogeny based on 82 core genes (left panel) and numbers of genes from selected CAZyme families (right panel) in *Maribacter dokdonensis* 62-1 and related strains. *Capnocytophaga ochracea* DSM 7271 served as outgroup. The three resolved *Maribacter* lineages are numbered and colored. PL, polysaccharide lyase; GH, glycoside hydrolase.

TABLE 1 | CAZyme families encoded by *Maribacter dokdonensis* 62-1.

CAZyme class	CAZyme family
PL	6, 7, 12, 17, 33, 40
GH	1, 2, 3, 5, 10, 13, 15, 16, 20, 23, 28, 29, 31, 32, 43, 65, 73, 78, 85, 88, 95, 97, 109, 113, 117, 141, 144
GT	2, 4, 5, 9, 19, 20, 26, 27, 28, 30, 51, 56, 83
CBM	9, 48, 67
CE	1, 11, 14
AA	1

PL, polysaccharide lyase; GH, glycoside hydrolase; GT, glycosyl transferase; CBM, carbohydrate-binding module; CE, carbohydrate esterase; AA, auxiliary carbohydrate-active oxidoreductase.

presumably corresponds to a specific pectin-related niche, supported by elevated numbers of GH families 28 and 105 that participate in pectinolytic activity (Hobbs et al., 2019).

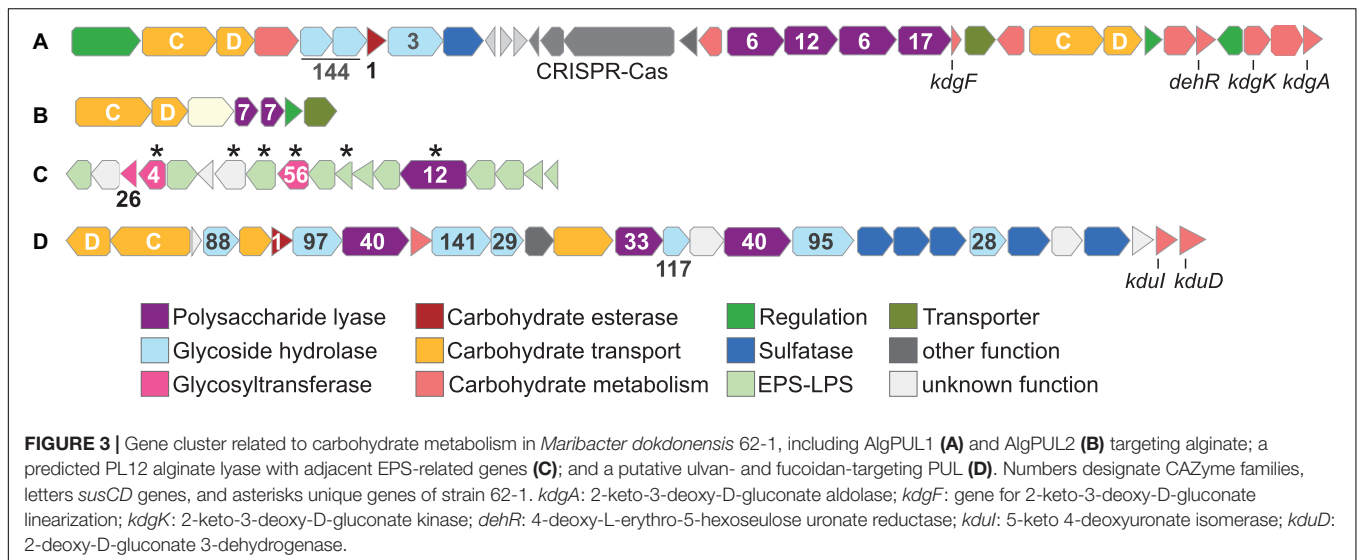
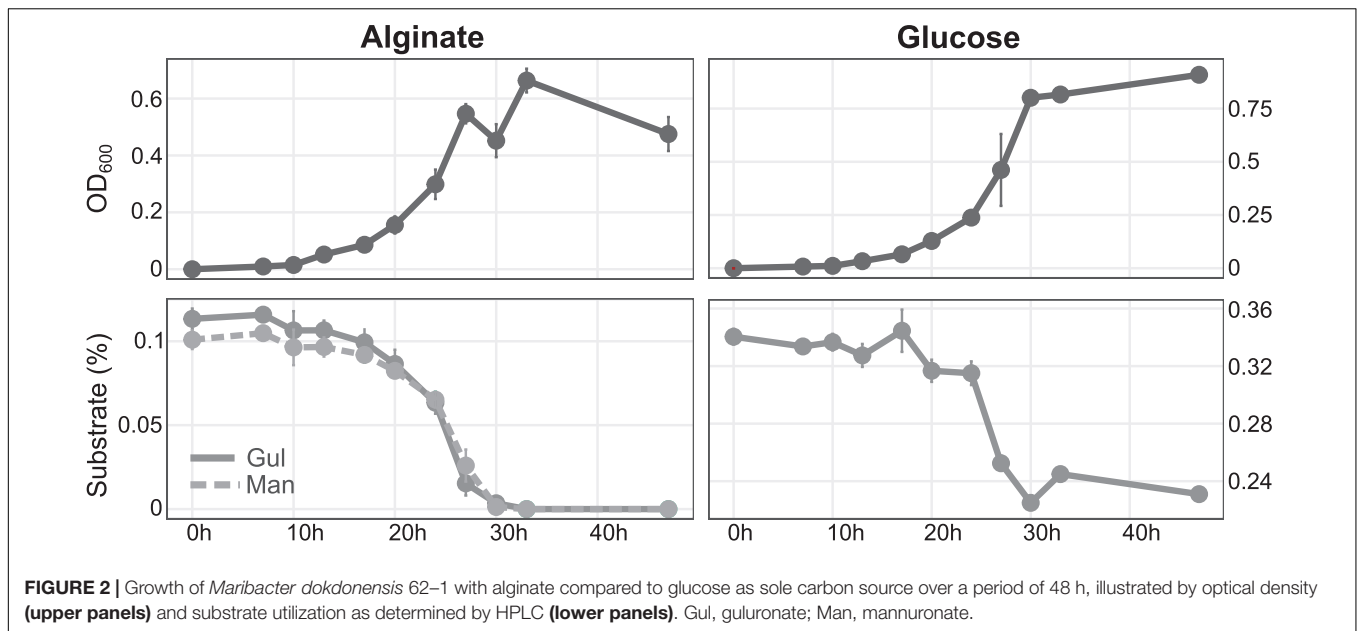
Notably, lineages 2 and 3 harbor distinct clusters for the biosynthesis of cell wall exopolysaccharides (EPS). Furthermore, specific O-antigen and GT variants occur on sublineage- and strain-level (Supplementary Table 3), presumably facilitating surface colonization and specific interactions with algal hosts

(Deo et al., 2019). This marked variability on fine phylogenetic levels suggests EPS-related genes as adaptive feature among *Maribacter* strains, mediating different surface-attachment and host-interaction mechanisms (Lee et al., 2016; Decho and Gutierrez, 2017).

Alginate Degradation Relates to Two Alginate PUL

The array of predicted alginate lyase genes allowed considerable growth with alginate as sole nutrient source (Figure 2). Growth was only slightly lower than with the monosaccharide glucose, indicating excellent adaptation for polysaccharide degradation. HPLC demonstrated that concentrations of both monomeric building blocks of alginate, mannuronate (M) and guluronate (G), decreased at the same rate (Figure 2).

Predicted alginate lyase genes are encoded in two major PUL, plus additional, single genes dispersed throughout the genome (Figure 3 and Supplementary Table 2). AlgPUL1 harbors four adjacent PL6-12-6-17 lyase genes, co-localized with a *susCD* pair and all genes for downstream processing of alginate monomers (Figure 3A). Hence, AlgPUL1 presumably encodes the complete metabolic cascade from external polymer breakdown (PL6, PL12), oligosaccharide hydrolysis (PL17) to



monomer processing (*kdgA*, *kdgF*, *kdgK*, and *dehR*). The co-localization of PL families with structural and catalytic diversity (Xu et al., 2017) presumably facilitates access to various algininate architectures, e.g., relating to polymer length or the ratio between M and G in poly-G, poly-M or mixed stretches. Upstream of AlgPUL1 is a cluster encoding one GH3 and two GH144 genes, together with *susCD* and sulfatase genes (Figure 3). The two regions are separated by a type II-C CRISPR-Cas locus, signifying a mobile genomic region that might facilitate the exchange of adjacent CAZymes. Both GH144 genes share ~50% amino acid identity to an endo-glucanase of *Chitinophaga pinensis* (Abe et al., 2017), indicating glucosidase or endoglucanase activity. Their occurrence in all *Maribacter* and *Zobellia* (orthologous groups 0002512 and 0002513; Supplementary Table 3), many marine flavobacteria as determined by BLASTp (data not

shown) as well as human gut microbes (McNulty et al., 2013) indicates ecological relevance across diverse habitats. The smaller AlgPUL2 encodes two PL7 lyases (Figure 3B) and might be auxiliary to AlgPUL1, potentially being activated by particular M/G architectures or environmental signals (Lim et al., 2011). The prediction of different signal peptide variants in the two PL7 (Supplementary Table 2) indicated that one PL7 is freely secreted whereas the other is anchored to the cell membrane. This complementary extracellular localization might boost alginolytic activity. Even without transcriptomic data, the combined physiological, chemical, and genomic evidence illustrates a functional and effective alginolytic pathway.

Comparative genomics revealed homologs of AlgPUL1 in most related *Maribacter* and *Zobellia* strains, whereas AlgPUL2 is restricted to *Maribacter* lineages 1 and 2. The observed structural

diversity of alginolytic PUL among *Maribacter* and *Zobellia* overall corresponds to core-genome relationships, supporting the notion of lineage-specific genomic signatures (**Supplementary Figure 2**). Notably, a PL12 only occurs in the AlgPUL1 variant of lineage 1 (**Figure 1**). This PL was presumably acquired from distant *Bacteroidetes* taxa, considering 65% amino acid identity to FNH22_29785 from *Fulvivirga* sp. M361 (Cytophagales). In contrast, lineages 2 and 3 encode a PL7 in this position, or solely harbor the PL6 and PL17 (**Supplementary Figure 2**). An almost identical AlgPUL2 occurs in *Flavivirga eckloniae* (locus tags C1H87_08155-08120), with 65% amino acid identity between the respective PL7 lyases. The original isolation of *F. eckloniae* from the alginate-rich macroalga *Ecklonia* (Lee et al., 2017) highlights this PUL as adaptation to algae-related niches. In *Zobellia*, AlgPUL1, and AlgPUL2 occur in mixed combinations and in distant genomic regions (Thomas et al., 2012), suggesting internal recombination events (**Supplementary Figure 2**).

Maribacter dokdonensis 62–1 encodes a unique PL12 (locus tag 00457) within an exopolysaccharide-related cluster, including several unique GTs (**Figure 3C**). This cluster might represent a link between the degradation and biosynthesis of polysaccharides, considering that other bacteria regulate EPS production and release via PLs or GHs (Bakkevig et al., 2005; Köseoğlu et al., 2015). The PL12 has 39% amino acid identity to ATE92_1054 of the North Sea isolate *Ulvibacter* sp. MAR-2010-11 (Kappelmann et al., 2019), indicating ecological relevance of horizontally transferred PL12 homologs in distant habitats. The PL12 is among the two lyases without predicted signal peptide (**Supplementary Table 2**) and hence likely retained within the cell, supporting an intracellular role in EPS metabolism. However, only transcriptomic data can confirm whether the PL12 indeed targets alginate and might be co-regulated with EPS-related genes.

A PUL Related to Ulvan and Fucoidan

Strain 62–1 harbors additional PUL for the degradation of other algal polysaccharides. The co-localization of two PL40 lyases, one PL33 from subfamily 2 as well as several sulfatases indicates activity towards a sulfated polysaccharide, presumably ulvan (**Figure 3D**). Although PL33 are classified as chondroitin or gellan lyases, our findings suggest an extended substrate range, potentially specific to subfamily 2. The two PL40 variants (locus tags 01347 and 01356) only have 30% identity and hence do not originate from duplication. Notably, PL40_01347 lacks a signal peptide compared to PL40_01356 and the PL33 (**Supplementary Table 2**), suggesting different secretory behavior and complementary functionality. The PL40_01347 homolog is conserved in most *Maribacter* and *Zobellia* genomes (**Supplementary Figure 2**), whereas PL40_01356 and the PL33 are missing in *Zobellia*. The latter PLs share 70 and 77% amino acid identity with a CAZyme pair in *Formosa agariphila* (locus tags BN863_10330 and BN863_10340, respectively), originally annotated as heparinase and PL8 but confirmed as PL33 and PL40 using the latest CAZY database (Mann et al., 2013; Lombard et al., 2014). Their absence in *Zobellia* but presence in distantly related *Arenibacter* spp. (**Figure 1**) indicates separate acquisition after

speciation, potentially via transfer events between *Formosa* and *Maribacter*.

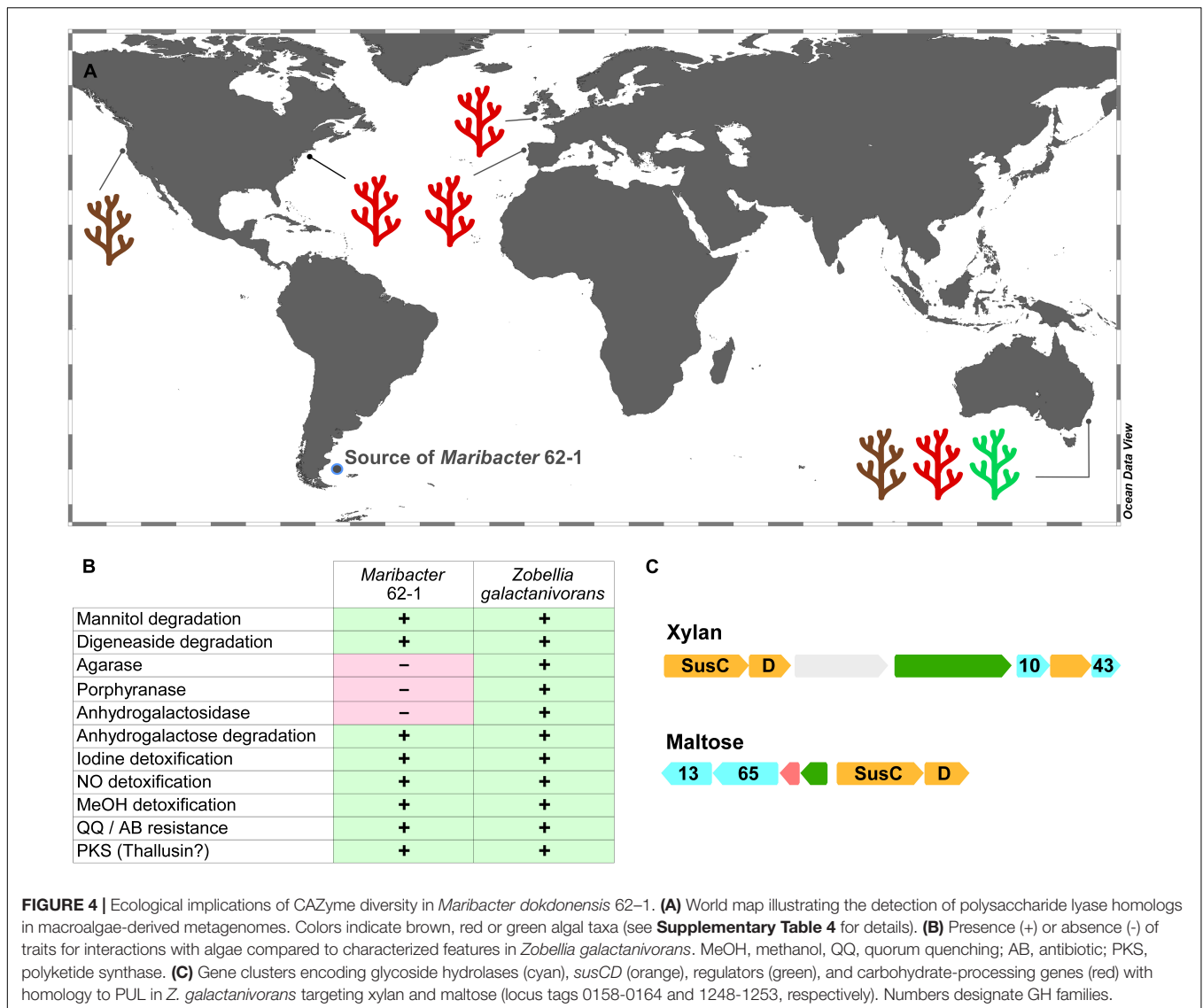
The combination of PL33 and PL40 differs from ulvanolytic PUL in other bacteria, which largely comprise ulvan lyases from PL families 24, 25, and 28 (Foran et al., 2017; Reisky et al., 2018; Koch et al., 2019b). Furthermore, the PUL in strain 62–1 also encodes α -fucosidases, including GH29, GH95, GH97, GH117, and GH141 comparable to a CAZyme plasmid in the verrucomicrobium *Lentimonas* (Sichert et al., 2020). Furthermore, a co-localized GH28 might remove galacturonic acid from fucoidan (Sichert et al., 2020), further metabolized by adjacent *kduI* and *kduD* genes into the Entner-Doudoroff pathway (Salinas and French, 2017). These observations indicate an alternative hydrolytic activity toward fucoidan, supported by fucose importer, fuconolactonase and fuconate dehydratase genes (locus tags 01371, 01373, 01376, respectively) encoded downstream of the PUL.

Ecological Implications

To establish a broader ecological context, we searched homologs of the PL33–PL40 pair (specific to *Maribacter*) and the PL12 within the EPS gene cluster (unique to strain 62–1) in 102 microbial metagenomes from marine plants. The co-detection of PL33 and PL40 homologs on diverse algae and seagrasses from global locations (**Figure 4A** and **Supplementary Table 4**) illustrates that relatives of strain 62–1 occur in such niches worldwide. The presence of PL33–PL40 homologs on brown, green and red macroalgae indicates that predicted hydrolytic capacities are functional *in situ* and support establishment in algal holobionts. The brown macroalgae *Macrocystis* and *Ecklonia* are rich in alginate whereas ulvan can constitute ~40% of the green algae *Ulva* (Kidgell et al., 2019), highlighting the importance of related CAZymes for associated bacteria and why *Maribacter* spp. are common algal epibionts (Martin et al., 2015).

Wide detection of the PL12 unique to strain 62–1 (**Supplementary Table 4**) supports the presumed role of the lyase and adjacent EPS genes in surface attachment. This gene arrangement might permit the formation of specific biofilm structures, helping to reduce competition with co-existing bacteria. EPS on algal surfaces could also provide a protective matrix, minimizing diffusion of secreted CAZymes and retaining hydrolysis products for maximal uptake (Vetter et al., 1998). In turn, EPS could also be advantageous in pelagic waters from which 62–1 has been isolated, where aggregation on self-produced EPS could constitute a protective refugium and facilitate survival when algal substrates are unavailable (Decho and Gutierrez, 2017). In general, the diversity of EPS genes on fine phylogenetic levels might mediate distinct interactions with algal hosts, considering that EPS can be strain-specific determinants of host interaction (Lee et al., 2016; Deo et al., 2019).

In addition to metagenomic analyses, we searched strain 62–1 for genes encoding characterized algae-adaptive traits in *Zobellia galactanivorans*, a closely related hydrolytic flavobacterium (Barbeyron et al., 2016b). This approach identified homologous genes for degradation of mannitol and digeneaside in strain 62–1 (**Figure 4B** and **Supplementary Table 4**). Furthermore, we found



GH43-GH10 and GH13-GH65 gene pairs targeting the algal carbohydrates xylan and maltose (**Figure 4C**). We also detected most homologs for anhydrogalactose utilization and hence the second step in carrageenan metabolism, but no GH127 or GH129 anhydrogalactosidase genes for initial hydrolysis (Ficko-Blean et al., 2017). Hence, *Maribacter* might utilize hydrolysis products from primary degraders, employing a secondary “harvester” strategy for carrageenan on red macroalgae (Hehemann et al., 2016). However, agarase or porphyranase homologs were not detected (**Figure 4B**), indicating an overall narrower niche range than *Zobellia*.

In addition to carbohydrate utilization, we found other features typical for interactions with macroalgae. For instance, genes for the detoxification of iodine and nitrous oxide (**Figure 4B** and **Supplementary Table 4**) likely counteract algal defense mechanisms (Ogawa et al., 1995; Verhaeghe et al., 2008). Detoxification of superoxide and hydrogen peroxide is associated with two dismutases and 21 thioredoxin-like oxidoreductases

(**Supplementary Table 4**), an almost twofold higher count despite an ~ 1 Mb smaller genome than *Zobellia* (Barbeyron et al., 2016b). The predicted ability to detoxify methanol is likely advantageous during demethylation of pectinous algal substrates (Koch et al., 2019a). Moreover, strain 62-1 encodes traits that might be advantageous to algal hosts. For instance, a putative homoserine lactone lyase (**Figure 4B** and **Supplementary Table 4**) might interfere with communication of bacterial competitors and prevent their biofilm formation. This process, often termed quorum quenching, might antagonize resource competitors and modulate the composition of the holobiont (Wahl et al., 2012). Presence of a PKS might allow biosynthesis of thallusin, an essential algal morphogen produced by both *Zobellia* and *Maribacter* (Matsuo et al., 2003; Weiss et al., 2017). Another conserved feature is the complete pathway for biosynthesis of biotin (vitamin B7; locus tags 03353–03359 in strain 62-1), a common characteristic of macroalgal epibionts (Karimi et al., 2020). Strain 62-1 misses a single gene in biosynthetic pathways

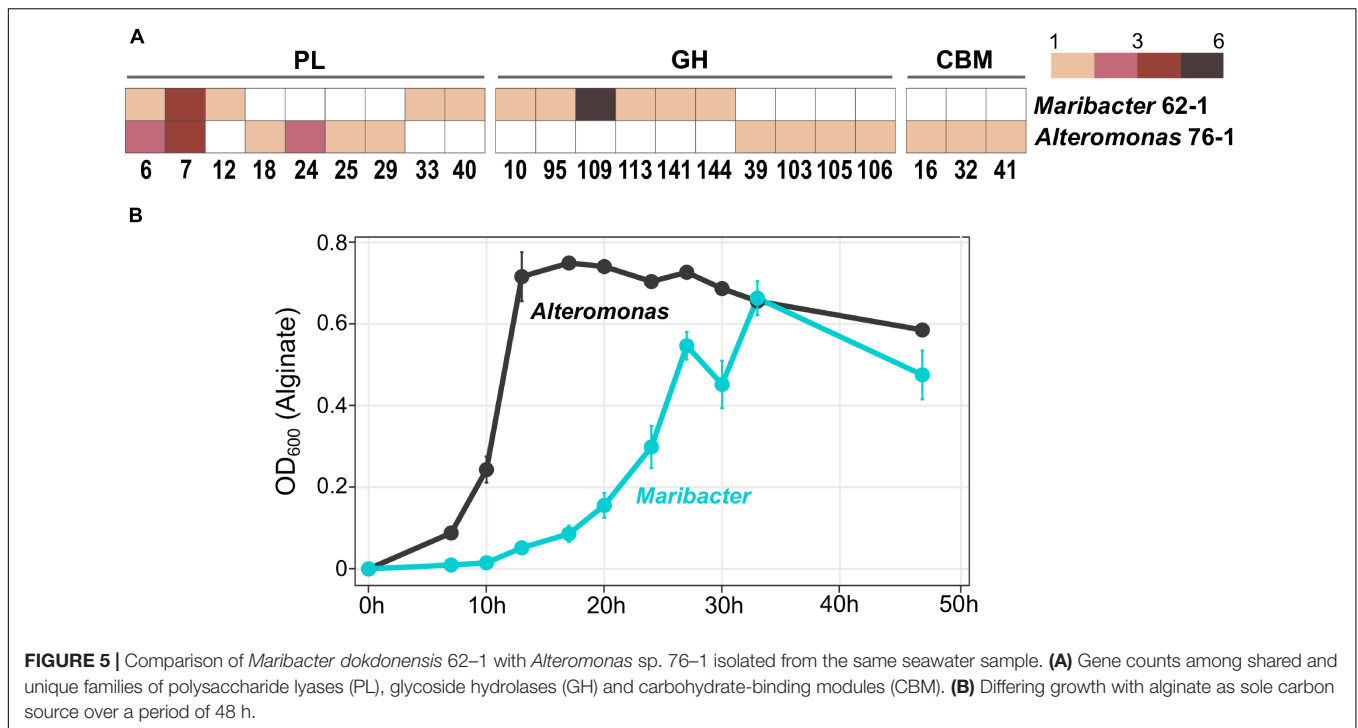


FIGURE 5 | Comparison of *Maribacter dokdonensis* 62-1 with *Alteromonas* sp. 76-1 isolated from the same seawater sample. **(A)** Gene counts among shared and unique families of polysaccharide lyases (PL), glycoside hydrolases (GH) and carbohydrate-binding modules (CBM). **(B)** Differing growth with alginate as sole carbon source over a period of 48 h.

for riboflavin (vitamin B2) and pantothenate (B5), but might provide intermediates to other bacteria encoding the complete pathway (Paerl et al., 2018; Shelton et al., 2019).

Comparison With *Alteromonas* sp. 76-1 From the Same Habitat

The gammaproteobacterial strain *Alteromonas* sp. 76-1, isolated from the same seawater sample as *Maribacter dokdonensis* 62-1, has a comparable predisposition toward polysaccharide degradation (Koch et al., 2019b). The presence of alginolytic and ulvanolytic systems in both 62-1 and 76-1 supports the notion that alginate and ulvan commonly occur at the Patagonian continental shelf. Although the two strains might hence compete for these resources, their corresponding CAZyme repertoires substantially differ. While sharing similar numbers of PL6 and PL7 alginate lyase genes (Figure 5A), PL12 are restricted to *Maribacter* and PL18 to *Alteromonas*, indicating different alginolytic strategies. Furthermore, concerning ulvanolytic activity, *Alteromonas* encodes PL24 and PL25 lyases on a CAZyme plasmid opposed to PL33 and PL40 on the *Maribacter* chromosome (Figure 5A), potentially influencing the regulation and transfer of these genes.

We hypothesize that differences in CAZymes and PUL for the same substrates mediate ecological specialization. For instance, different PL combinations might specialize for different subsets of these polysaccharides, e.g., relating to polymer length, the ratio of individual carbohydrate monomers, sulfatation or the degree of side-chain decorations. For instance, the *Alteromonas*-specific PL18 might boost alginolytic activity by acting as bifunctional lyase on both poly-G and poly-M stretches (Li et al., 2011). Furthermore, strain-specific GH genes might allow the separation into

distinct “polysaccharide niches” and minimize competition. For instance, a GH109 with presumed *N*-acetylgalactosaminidase activity (Lombard et al., 2014) only occurs in *Maribacter* (Figure 5A). Finally, ecological specialization might include “temporal niche differentiation” considering variable doubling times when degrading alginate (Figure 5B). The delayed exponential phase in *Maribacter* suggests *K*-strategy, compared to *r*-strategy in the faster-growing *Alteromonas* (Pedler et al., 2014).

CONCLUSION

The diversity of CAZymes and PUL targeting alginate, ulvan and other algal carbohydrates illustrates a marked predisposition of *Maribacter dokdonensis* 62-1 for polysaccharide degradation, exemplified by distinct growth with alginate as sole carbon source. The variety of EPS-related genes might facilitate switching between free-living and surface-associated lifestyles, potentially connected to the specific colonization of algal hosts. The overall conservation of adaptive features in *Maribacter* and the “sister genus” *Zobellia* highlights their importance as macroalgal epibionts, supported by detection of PL homologs in metagenomes from brown, green and red macroalgae on global scales. The presence of both adverse (utilization of algal substrates, evading algal defense) and advantageous traits (vitamin production, biofilm control) indicates versatile lifestyles, which potentially change depending on physicochemical conditions and algal health (Kumar et al., 2016). Different hydrolytic machineries and doubling times of strain 62-1 compared to the co-occurring *Alteromonas* sp. 76-1 might avoid competition and result in colonization of discrete niches. These insights contribute to the understanding

of flavobacterial CAZymes and hydrolytic activity in context of biogeochemical cycles, niche specialization and ecological interactions in the oceans.

DATA AVAILABILITY STATEMENT

The datasets presented in this study can be found in online repositories. The names of the repository/repositories and accession number(s) can be found in the article/**Supplementary Material**.

AUTHOR CONTRIBUTIONS

LW conducted genomic analyses and contributed to writing. MM performed growth experiments and HPLC. JK contributed to genomic analyses. RD performed genome sequencing. MS co-organized the experiments yielding the isolation of strain 62–1. MW designed research and wrote the manuscript. All authors contributed to the final version of the manuscript.

FUNDING

This work was supported by the Japan Science and Technology Agency ERATO (JPMJER1502) and the Collaborative Research Center *Roseobacter* from the German Research Foundation (TRR51). MW was supported by the German Research Foundation through grant WI3888/1-2.

REFERENCES

- Abe, K., Nakajima, M., Yamashita, T., Matsunaga, H., Kamisuki, S., Nihira, T., et al. (2017). Biochemical and structural analyses of a bacterial endo- β -1,2-glucanase reveal a new glycoside hydrolase family. *J. Biol. Chem.* 292, 7487–7506. doi: 10.1074/jbc.M116.762724
- Acha, E. M., Mianzan, H. W., Guerrero, R. A., Favero, M., and Bava, J. (2004). Marine fronts at the continental shelves of austral South America: physical and ecological processes. *J. Mar. Syst.* 44, 83–105. doi: 10.1016/j.jmarsys.2003.09.005
- Almagro Armenteros, J. J., Tsirigos, K. D., Sønderby, C. K., Petersen, T. N., Winther, O., Brunak, S., et al. (2019). SignalP 5.0 improves signal peptide predictions using deep neural networks. *Nat. Biotechnol.* 37, 420–423. doi: 10.1038/s41587-019-0036-z
- Arnosti, C., Steen, A. D., Ziervogel, K., Ghobrial, S., and Jeffrey, W. H. (2011). Latitudinal gradients in degradation of marine dissolved organic carbon. *PLoS One* 6:e28900. doi: 10.1371/journal.pone.0028900
- Arnosti, C., Wietz, M., Brinkhoff, T., Hehemann, J.-H., Probandt, D., Zeugner, L., et al. (2021). The biogeochemistry of marine polysaccharides: sources, inventories, and bacterial drivers of the carbohydrate cycle. *Annu. Rev. Mar. Sci.* 13, 81–108.
- Bakkevig, K., Sletta, H., Gimmedstad, M., Aune, R., Ertesvåg, H., Degnes, K., et al. (2005). Role of the *Pseudomonas fluorescens* alginate lyase (AlgL) in clearing the periplasm of alginates not exported to the extracellular environment. *J. Bacteriol.* 187, 8375–8384. doi: 10.1128/JB.187.24.8375-8384.2005
- Bakunina, I. Y., Nedashkovskaya, O. I., Kim, S. B., Zvyagintseva, T. N., and Mikhailov, V. V. (2012). Diversity of glycosidase activities in the bacteria of the phylum *Bacteroidetes* isolated from marine algae. *Microbiology* 81, 688–695. doi: 10.1134/S0026261712060033

ACKNOWLEDGMENTS

We thank Rolf Weinert and Martin Mierzejewski for excellent laboratory assistance. Captain, crew and colleagues of RV Polarstern expedition ANTXXVIII-5 are thanked for their professional and friendly support. Sonja Voget is gratefully acknowledged for Illumina sequencing.

SUPPLEMENTARY MATERIAL

The Supplementary Material for this article can be found online at: <https://www.frontiersin.org/articles/10.3389/fmicb.2021.628055/full#supplementary-material>

Supplementary Figure 1 | Heatmap of average nucleotide identities (ANI) between the genomes of *Maribacter dokdonensis* 62–1 and related strains.

Supplementary Figure 2 | Homologs of AlgPUL1 (A), AlgPUL2 (B) and the mixed-feature PUL relating to ulvan and fucoidan (C) in genomes of *Maribacter* and *Zobellia* strains. Numbers designate PL families.

Supplementary Table 1 | Strain overview. Genome characteristics of *Maribacter dokdonensis* 62–1 and related strains used for comparative analyses.

Supplementary Table 2 | CAZyme overview. CAZymes, PUL, sulfatases, and signal peptides in *Maribacter dokdonensis* 62–1 and related strains.

Supplementary Table 3 | Pangenome overview. Core, accessory and unique genes in *Maribacter dokdonensis* 62–1 and related strains.

Supplementary Table 4 | Ecological implications. Detection of PL homologs in microbial metagenomes from marine plants and genomic features for interactions with algae.

- Bankevich, A., Nurk, S., Antipov, D., Gurevich, A. A., Dvorkin, M., Kulikov, A. S., et al. (2012). SPAdes: a new genome assembly algorithm and its applications to single-cell sequencing. *J. Comput. Biol.* 19, 455–477. doi: 10.1089/cmb.2012.0021
- Barbeyron, T., Brillet-Guéguen, L., Carré, W., Carrière, C., Caron, C., Czjzek, M., et al. (2016a). Matching the diversity of sulfated biomolecules: creation of a classification database for sulfatases reflecting their substrate specificity. *PLoS One* 11:e0164846. doi: 10.1371/journal.pone.0164846
- Barbeyron, T., Thomas, F., Barbe, V., Teeling, H., Schenowitz, C., Dossat, C., et al. (2016b). Habitat and taxon as driving forces of carbohydrate catabolism in marine heterotrophic bacteria: example of the model algae-associated bacterium *Zobellia galactanivorans* Dsij^T. *Environ. Microbiol.* 18, 4610–4627. doi: 10.1111/1462-2920.13584
- Bateman, A., Martin, M. J., O'Donovan, C., Magrane, M., Alpi, E., Antunes, R., et al. (2017). UniProt: the universal protein knowledgebase. *Nucleic Acids Res.* 45, D158–D169. doi: 10.1093/nar/gkw1099
- Chernysheva, N., Bystritskaya, E., Stenkova, A., Golovkin, I., Nedashkovskaya, O., and Isaeva, M. (2019). Comparative genomics and CAZyme genome repertoires of marine *Zobellia amurskyensis* KMM 3526^T and *Zobellia laminariae* KMM 3676^T. *Mar. Drugs* 17:661. doi: 10.3390/md17120661
- Darriba, D., Posada, D., Kozlov, A. M., Stamatakis, A., Morel, B., and Flouri, T. (2020). ModelTest-NG: a new and scalable tool for the selection of DNA and protein evolutionary models. *Mol. Biol. Evol.* 37, 291–294. doi: 10.1093/molbev/msz189
- Decho, A. W., and Gutierrez, T. (2017). Microbial extracellular polymeric substances (EPSs) in ocean systems. *Front. Microbiol.* 8:922. doi: 10.3389/fmicb.2017.00922
- Deo, D., Davray, D., and Kulkarni, R. (2019). A diverse repertoire of exopolysaccharide biosynthesis gene clusters in *Lactobacillus* revealed by

- comparative analysis in 106 sequenced genomes. *Microorganisms* 7:444. doi: 10.3390/microorganisms7100444
- Emms, D. M., and Kelly, S. (2019). OrthoFinder: phylogenetic orthology inference for comparative genomics. *Genome Biol.* 20:238. doi: 10.1186/s13059-019-1832-y
- Fernández-Gómez, B., Richter, M., Schüller, M., Pinhassi, J., Acinas, S. G., González, J. M., et al. (2013). Ecology of marine *Bacteroidetes*: a comparative genomics approach. *ISME J.* 7, 1026–1037. doi: 10.1038/ismej.2012.169
- Ferrer-González, F. X., Widner, B., Holderman, N. R., Glushka, J., Edison, A. S., Kujawinski, E. B., et al. (2020). Resource partitioning of phytoplankton metabolites that support bacterial heterotrophy. *ISME J.* 15, 762–773. doi: 10.1038/s41396-020-00811-y
- Ficko-Blean, E., Préchoux, A., Thomas, F., Rochat, T., Larocque, R., Zhu, Y., et al. (2017). Carrageenan catabolism is encoded by a complex regulon in marine heterotrophic bacteria. *Nat. Commun.* 8, 1685–1685. doi: 10.1038/s41467-017-01832-6
- Foran, E., Buravenkov, V., Kopel, M., Mizrahi, N., Shoshani, S., Helbert, W., et al. (2017). Functional characterization of a novel “ulvan utilization loci” found in *Alteromonas* sp. LOR Genome. *Algal Res.* 25, 39–46. doi: 10.1016/j.algal.2017.04.036
- García, V. M. T., García, C. A. E., Mata, M. M., Pollery, R. C., Piola, A. R., Signorini, S. R., et al. (2008). Environmental factors controlling the phytoplankton blooms at the Patagonia shelf-break in spring. *Deep Sea Res. Part I Oceanogr. Res. Papers* 55, 1150–1166. doi: 10.1016/j.DSR.2008.04.011
- Grieb, A., Francis, T. B., Krüger, K., Orellana, L. H., Amann, R., and Fuchs, B. M. (2020). *Candidatus* *Abditibacter*, a novel genus within the *Cryomorphaceae*, thriving in the North Sea. *Syst. Appl. Microbiol.* 43:126088. doi: 10.1016/j.syapm.2020.126088
- Grondin, J. M., Tamura, K., Déjean, G., Abbott, D. W., and Brumer, H. (2017). Polysaccharide Utilization Loci: fuelling microbial communities. *J. Bacteriol.* 199:e00860-16. doi: 10.1128/JB.00860-16
- Hehemann, J.-H., Arevalo, P., Datta, M. S., Yu, X., Corzett, C. H., Henschel, A., et al. (2016). Adaptive radiation by waves of gene transfer leads to fine-scale resource partitioning in marine microbes. *Nat. Commun.* 7:12860. doi: 10.1038/ncomms12860
- Hehemann, J.-H., Boraston, A. B., and Czjzek, M. (2014). A sweet new wave: structures and mechanisms of enzymes that digest polysaccharides from marine algae. *Curr. Opin. Struct. Biol.* 28, 77–86. doi: 10.1016/j.sbi.2014.07.009
- Hehemann, J.-H., Correc, G., Thomas, F., Bernard, T., Barbeyron, T., Jam, M., et al. (2012). Biochemical and structural characterization of the complex agarolytic enzyme system from the marine bacterium *Zobellia galactanivorans*. *J. Biol. Chem.* 287, 30571–30584. doi: 10.1074/jbc.M112.377184
- Hobbs, J. K., Hettle, A. G., Vickers, C., and Boraston, A. B. (2019). Biochemical reconstruction of a metabolic pathway from a marine bacterium reveals its mechanism of pectin depolymerization. *Appl. Environ. Microbiol.* 85:aem.02114-18. doi: 10.1128/AEM.02114-18
- Kabisch, A., Otto, A., König, S., Becher, D., Albrecht, D., Schüller, M., et al. (2014). Functional characterization of polysaccharide utilization loci in the marine *Bacteroidetes* ‘Gramella forsetii’ KT0803. *ISME J.* 8, 1492–1502. doi: 10.1038/ismej.2014.4
- Kanehisa, M., and Sato, Y. (2020). KEGG Mapper for inferring cellular functions from protein sequences. *Protein Sci.* 29, 28–35. doi: 10.1002/pro.3711
- Kappelmann, L., Krüger, K., Hehemann, J.-H., Harder, J., Markert, S., Unfried, F., et al. (2019). Polysaccharide utilization loci of North Sea *Flavobacteriia* as basis for using SusC/D-protein expression for predicting major phytoplankton glycans. *ISME J.* 13, 76–91. doi: 10.1038/s41396-018-0242-6
- Karimi, E., Geslain, E., KleinJan, H., Tanguy, G., Legeay, E., Corre, E., et al. (2020). Genome sequences of 72 bacterial strains isolated from *Ectocarpus subulatus*: a resource for algal microbiology. *Genome Biol. Evol.* 12, 3647–3655. doi: 10.1093/gbe/evz278
- Kidgell, J. T., Magnusson, M., de Nys, R., and Glasson, C. R. K. (2019). Ulvan: a systematic review of extraction, composition and function. *Algal Res.* 39:101422. doi: 10.1016/j.algal.2019.101422
- Koch, H., Dürwald, A., Schweder, T., Noriega-Ortega, B., Vidal-Melgosa, S., Hehemann, J.-H., et al. (2019a). Biphasic cellular adaptations and ecological implications of *Alteromonas macleodii* degrading a mixture of algal polysaccharides. *ISME J.* 13, 92–103. doi: 10.1038/s41396-018-0252-4
- Koch, H., Freese, H. M., Hahnke, R., Simon, M., and Wietz, M. (2019b). Adaptations of *Alteromonas* sp. 76-1 to polysaccharide degradation: a CAZyme plasmid for ulvan degradation and two alginate lytic systems. *Front. Microbiol.* 10:504. doi: 10.3389/fmicb.2019.00504
- Kolde, R. (2018). *Heatmap: Pretty Heatmaps*. Available online at: <https://github.com/raivokolde/heatmap> (accessed July, 2020).
- Köseoğlu, V. K., Heiss, C., Azadi, P., Topchii, E., Güvener, Z. T., Lehmann, T. E., et al. (2015). *Listeria monocytogenes* exopolysaccharide: origin, structure, biosynthetic machinery and c-di-GMP-dependent regulation. *Mol. Microbiol.* 96, 728–743. doi: 10.1111/mmi.12966
- Kumar, V., Zozaya-Valdes, E., Kjelleberg, S., Thomas, T., and Egan, S. (2016). Multiple opportunistic pathogens can cause a bleaching disease in the red seaweed *Delisea pulchra*. *Environ. Microbiol.* 18, 3962–3975. doi: 10.1111/1462-2920.13403
- Kwak, M.-J., Lee, J., Kwon, S.-K., and Kim, J. F. (2017). Genome information of *Maribacter dokdonensis* DSW-8 and comparative analysis with other *Maribacter* genomes. *J. Microbiol. Biotechnol.* 27, 591–597. doi: 10.4014/jmb.1608.08044
- Labourel, A., Jam, M., Jeudy, A., Hehemann, J.-H., Czjzek, M., and Michel, G. (2014). The β -glucanase ZgLamA from *Zobellia galactanivorans* evolved a bent active site adapted for efficient degradation of algal laminarin. *J. Biol. Chem.* 289, 2027–2042. doi: 10.1074/jbc.M113.538843
- Lawlor, J. (2020). *PNWColors*. Available online at: <https://github.com/jakelawlor/PNWColors> (accessed August, 2020).
- Lee, I.-C., Caggianiello, G., van Swam, I. I., Taverne, N., Meijerink, M., Bron, P. A., et al. (2016). Strain-Specific features of extracellular polysaccharides and their impact on *Lactobacillus plantarum*-host interactions. *Appl. Environ. Microbiol.* 82, 3959–3970. doi: 10.1128/AEM.00306-16
- Lee, J. H., Kang, J. W., Choe, H. N., and Seong, C. N. (2017). *Flavivirga eckloniae* sp. nov. and *Flavivirga aquimarina* sp. nov., isolated from seaweed *Ecklonia cava*. *Int. J. Syst. Evol. Microbiol.* 67, 3089–3094. doi: 10.1099/ijsem.0.002094
- Li, J.-W., Dong, S., Song, J., Li, C.-B., Chen, X.-L., Xie, B.-B., et al. (2011). Purification and characterization of a bifunctional alginate lyase from *Pseudoalteromonas* sp. SM0524. *Mar. Drugs* 9, 109–123. doi: 10.3390/md9010109
- Lim, H. N., Lee, Y., and Hussein, R. (2011). Fundamental relationship between operon organization and gene expression. *Proc. Natl. Acad. Sci. U.S.A.* 108, 10626–10631. doi: 10.1073/pnas.1105692108
- Lombard, V., Golaconda Ramulu, H., Drula, E., Coutinho, P. M., and Henrissat, B. (2014). The carbohydrate-active enzymes database (CAZy) in 2013. *Nucleic Acids Res.* 42, D490–D495. doi: 10.1093/nar/gkt1178
- Mann, A. J., Hahnke, R. L., Huang, S., Werner, J., Xing, P., Barbeyron, T., et al. (2013). The genome of the alga-associated marine flavobacterium *Formosa agariphila* KMM 3901^T reveals a broad potential for degradation of algal polysaccharides. *Appl. Environ. Microbiol.* 79, 6813–6822. doi: 10.1128/AEM.01937-13
- Markowitz, V. M., Chen, I. M. A., Palaniappan, K., Chu, K., Szeto, E., Grechkin, Y., et al. (2012). IMG: the integrated microbial genomes database and comparative analysis system. *Nucleic Acids Res.* 40, D115–D122. doi: 10.1093/nar/gkr1044
- Martin, M., Barbeyron, T., Martin, R., Portetelle, D., Michel, G., and Vandenberg, M. (2015). The cultivable surface microbiota of the brown alga *Ascophyllum nodosum* is enriched in macroalgal-polysaccharide-degrading bacteria. *Front. Microbiol.* 6:1487. doi: 10.3389/fmicb.2015.01487
- Matos, M. N., Lozada, M., Anselmino, L. E., Musumeci, M. A., Henrissat, B., Jansson, J. K., et al. (2016). Metagenomics unveils the attributes of the alginate lytic guilds of sediments from four distant cold coastal environments. *Environ. Microbiol.* 18, 4471–4484. doi: 10.1111/1462-2920.13433
- Matsuo, Y., Imagawa, H., Nishizawa, M., and Shizuri, Y. (2005). Isolation of an algal morphogenesis inducer from a marine bacterium. *Science* 307, 1598–1598. doi: 10.1126/science.1105486
- Matsuo, Y., Suzuki, M., Kasai, H., Shizuri, Y., and Harayama, S. (2003). Isolation and phylogenetic characterization of bacteria capable of inducing differentiation in the green alga *Monostroma oxyspermum*. *Environ. Microbiol.* 5, 25–35. doi: 10.1046/j.1462-2920.2003.00382.x
- McNulty, N. P., Wu, M., Erickson, A. R., Pan, C., Erickson, B. K., Martens, E. C., et al. (2013). Effects of diet on resource utilization by a model human gut microbiota containing *Bacteroides cellulosilyticus* WH2, a symbiont with

- an extensive glycomiome. *PLoS Biol.* 11:e1001637. doi: 10.1371/journal.pbio.1001637
- Miller, M. A., Pfeiffer, W., and Schwartz, T. (2010). "Creating the CIPRES science gateway for inference of large phylogenetic trees," in *Proceedings of the 2010 Gateway Computing Environments Workshop (GCE)*, New Orleans, LA, 1–8.
- Mopper, K., Schultz, C. A., Chevolut, L., Germain, C., Revuelta, R., and Dawson, R. (1992). Determination of sugars in unconcentrated seawater and other natural waters by liquid chromatography and pulsed amperometric detection. *Environ. Sci. Technol.* 26, 133–138. doi: 10.1021/es00025a014
- Moriya, Y., Itoh, M., Okuda, S., Yoshizawa, A. C., and Kanehisa, M. (2007). KAAAS: an automatic genome annotation and pathway reconstruction server. *Nucleic Acids Res.* 35, W182–W185. doi: 10.1093/nar/gkm321
- Na, S.-I., Kim, Y. O., Yoon, S.-H., Ha, S., Baek, I., and Chun, J. (2018). UBCG: up-to-date bacterial core gene set and pipeline for phylogenomic tree reconstruction. *J. Microbiol.* 56, 281–285. doi: 10.1007/s12275-018-8014-6
- Nikolenko, S. I., Korobeynikov, A. I., and Alekseyev, M. A. (2013). BayesHammer: bayesian clustering for error correction in single-cell sequencing. *BMC Genomics* 14(Suppl. 1):S7. doi: 10.1186/1471-2164-14-S1-S7
- Norling, M., Jareborg, N., and Dainat, J. (2018). EMBLmyGFF3: a converter facilitating genome annotation submission to European Nucleotide Archive. *BMC Res. Notes* 11:584. doi: 10.1186/s13104-018-3686-x
- Ogawa, K., Akagawa, E., Yamane, K., Sun, Z. W., LaCelle, M., Zuber, P., et al. (1995). The *nasB* operon and *nasA* gene are required for nitrate/nitrite assimilation in *Bacillus subtilis*. *J. Bacteriol.* 177, 1409–1413. doi: 10.1128/jb.177.5.1409-1413.1995
- Paerl, R. W., Sundh, J., Tan, D., Svenningsen, S. L., Hylander, S., Pinhassi, J., et al. (2018). Prevalent reliance of bacterioplankton on exogenous vitamin B1 and precursor availability. *Proc. Natl. Acad. Sci. U.S.A.* 115, E10447–E10456. doi: 10.1073/pnas.1806425115
- Pedler, B. E., Aluwihare, L. I., and Azam, F. (2014). Single bacterial strain capable of significant contribution to carbon cycling in the surface ocean. *Proc. Natl. Acad. Sci. U.S.A.* 111, 7202–7207. doi: 10.1073/pnas.1401887111
- R Core Team (2018). *R: A Language and Environment for Statistical Computing*. Vienna: R Foundation for Statistical Computing.
- Reintjes, G., Arnosti, C., Fuchs, B. M., and Amann, R. (2017). An alternative polysaccharide uptake mechanism of marine bacteria. *ISME J.* 11, 1640–1650. doi: 10.1038/ismej.2017.26
- Reisky, L., Préchoux, A., Zühlke, M.-K., Bäumgen, M., Robb, C. S., Gerlach, N., et al. (2019). A marine bacterial enzymatic cascade degrades the algal polysaccharide ulvan. *Nat. Chem. Biol.* 15, 803–812. doi: 10.1038/s41589-019-0311-9
- Reisky, L., Stanetty, C., Mihovilovic, M. D., Schweder, T., Hehemann, J.-H., and Bornscheuer, U. T. (2018). Biochemical characterization of an ulvan lyase from the marine flavobacterium *Formosa agariphila* KMM 3901^T. *Appl. Microbiol. Biotechnol.* 102, 6987–6996. doi: 10.1007/s00253-018-9142-y
- Rodriguez-R, L. M., and Konstantinidis, K. T. (2016). The envomics collection: a toolbox for specialized analyses of microbial genomes and metagenomes. *PeerJ Preprints* 4:e1900v1. doi: 10.7287/PEERJ.PREPRINTS.1900V1
- Salinas, A., and French, C. E. (2017). The enzymatic ulvan depolymerisation system from the alga-associated marine flavobacterium *Formosa agariphila*. *Algal Res.* 27, 335–344. doi: 10.1016/j.algal.2017.09.025
- Shelton, A. N., Seth, E. C., Mok, K. C., Han, A. W., Jackson, S. N., Haft, D. R., et al. (2019). Uneven distribution of cobamide biosynthesis and dependence in bacteria predicted by comparative genomics. *ISME J.* 13, 789–804. doi: 10.1038/s41396-018-0304-9
- Sichert, A., Corzett, C. H., Schechter, M. S., Unfried, F., Markert, S., Becher, D., et al. (2020). Verrucomicrobia use hundreds of enzymes to digest the algal polysaccharide fucoidan. *Nat. Microbiol.* 5, 1026–1039. doi: 10.1038/s41564-020-0720-2
- Stamatakis, A. (2014). RAxML version 8: a tool for phylogenetic analysis and post-analysis of large phylogenies. *Bioinformatics* 30, 1312–1313. doi: 10.1093/bioinformatics/btu033
- Teeling, H., Fuchs, B. M., Becher, D., Klockow, C., Gardebrecht, A., Bennke, C. M., et al. (2012). Substrate-controlled succession of marine bacterioplankton populations induced by a phytoplankton bloom. *Science* 336, 608–611. doi: 10.1126/science.1218344
- Teeling, H., Fuchs, B. M., Bennke, C. M., Krüger, K., Chafee, M., Kappelmann, L., et al. (2016). Recurring patterns in bacterioplankton dynamics during coastal spring algae blooms. *eLife* 5:e11888. doi: 10.7554/eLife.11888
- Terrapon, N., Lombard, V., Drula, É., Lapébie, P., Al-Masaudi, S., Gilbert, H. J., et al. (2018). PULDB: the expanded database of Polysaccharide Utilization Loci. *Nucleic Acids Res.* 46, D677–D683. doi: 10.1093/nar/gkx1022
- Thomas, F., Barbeyron, T., Tonon, T., Génicot, S., Czjzek, M., and Michel, G. (2012). Characterization of the first alginolytic operons in a marine bacterium: from their emergence in marine *Flavobacteriia* to their independent transfers to marine *Proteobacteria* and human gut *Bacteroides*. *Environ. Microbiol.* 14, 2379–2394. doi: 10.1111/j.1462-2920.2012.02751.x
- Thomas, F., Bordron, P., Eveillard, D., and Michel, G. (2017). Gene expression analysis of *Zobellia galactanivorans* during the degradation of algal polysaccharides reveals both substrate-specific and shared transcriptome-wide responses. *Front. Microbiol.* 8:1808. doi: 10.3389/fmicb.2017.01808
- van der Loos, L. M., Eriksson, B. K., and Falcão Salles, J. (2019). The macroalgal holobiont in a changing sea. *Trends Microbiol.* 27, 635–650. doi: 10.1016/j.tim.2019.03.002
- Verhaeghe, E. F., Fraysse, A., Guerquin-Kern, J.-L., Wu, T.-D., Devès, G., Mioskowski, C., et al. (2008). Microchemical imaging of iodine distribution in the brown alga *Laminaria digitata* suggests a new mechanism for its accumulation. *J. Biol. Inorg. Chem.* 13, 257–269. doi: 10.1007/s00775-007-0319-6
- Vetter, Y. A., Deming, J. W., Jumars, P. A., and Krieger-Brockett, B. B. (1998). A predictive model of bacterial foraging by means of freely released extracellular enzymes. *Microb. Ecol.* 36, 75–92. doi: 10.1007/s002489900095
- Wahl, M., Goecke, F., Labes, A., Dobretsov, S., and Weinberger, F. (2012). The second skin: ecological role of epibiotic biofilms on marine organisms. *Front. Microbiol.* 3:292. doi: 10.3389/fmicb.2012.00292
- Weiss, A., Costa, R., and Wichard, T. (2017). Morphogenesis of *Ulva mutabilis* (Chlorophyta) induced by *Maribacter* species (*Bacteroidetes*, *Flavobacteriaceae*). *Bot. Mar.* 60, 197–206. doi: 10.1515/bot-2016-0083
- Wickham, H. (2016). *ggplot2: Elegant Graphics for Data Analysis*. New York, NY: Springer-Verlag New York.
- Wietz, M., Wemheuer, B., Simon, H., Giebel, H. A., Seibt, M. A., Daniel, R., et al. (2015). Bacterial community dynamics during polysaccharide degradation at contrasting sites in the Southern and Atlantic Oceans. *Environ. Microbiol.* 17, 3822–3831. doi: 10.1111/1462-2920.12842
- Wolter, L. A., Wietz, M., Ziesche, L., Breider, S., Leinberger, J., Poehlein, A., et al. (2021). *Pseudoocceanicola algae* sp. nov., isolated from the marine macroalga *Fucus spiralis*, shows genomic and physiological adaptations for an algae-associated lifestyle. *Syst. Appl. Microbiol.* 44:126166. doi: 10.1016/j.syapm.2020.126166
- Xu, F., Wang, P., Zhang, Y.-Z., and Chen, X.-L. (2017). Diversity of three-dimensional structures and catalytic mechanisms of alginate lyases. *Appl. Environ. Microbiol.* 84:e02040-17. doi: 10.1128/AEM.02040-17
- Zech, H., Thole, S., Schreiber, K., Kalhöfer, D., Voget, S., Brinkhoff, T., et al. (2009). Growth phase-dependent global protein and metabolite profiles of *Phaeobacter gallaeciensis* strain DSM 17395, a member of the marine Roseobacter-clade. *Proteomics* 9, 3677–3697. doi: 10.1002/pmic.200900120
- Zhan, P., Tang, K., Chen, X., and Yu, L. (2017). Complete genome sequence of *Maribacter* sp. T28, a polysaccharide-degrading marine flavobacteria. *J. Biotechnol.* 259, 1–5. doi: 10.1016/j.jbiotec.2017.08.009
- Zhang, H., Yohe, T., Huang, L., Entwistle, S., Wu, P., Yang, Z., et al. (2018). dbCAN2: a meta server for automated carbohydrate-active enzyme annotation. *Nucleic Acids Res.* 46, W95–W101. doi: 10.1093/nar/gky418
- Zhu, Y., Thomas, F., Larocque, R., Li, N., Duffieux, D., Cladière, L., et al. (2017). Genetic analyses unravel the crucial role of a horizontally acquired alginate lyase for brown algal biomass degradation by *Zobellia galactanivorans*. *Environ. Microbiol.* 19, 2164–2181. doi: 10.1111/1462-2920.13699

Conflict of Interest: The authors declare that the research was conducted in the absence of any commercial or financial relationships that could be construed as a potential conflict of interest.

Copyright © 2021 Wolter, Mitulla, Kalem, Daniel, Simon and Wietz. This is an open-access article distributed under the terms of the Creative Commons Attribution License (CC BY). The use, distribution or reproduction in other forums is permitted, provided the original author(s) and the copyright owner(s) are credited and that the original publication in this journal is cited, in accordance with accepted academic practice. No use, distribution or reproduction is permitted which does not comply with these terms.