

# Computers in Biology and Medicine

## Multibeat Echocardiographic Phase Detection Using Deep Neural Networks

--Manuscript Draft--

<b>Manuscript Number:</b>	CIBM-D-21-00234
<b>Article Type:</b>	Full Length Article
<b>Keywords:</b>	Echocardiography; Cardiac imaging; deep learning; Phase detection
<b>Corresponding Author:</b>	Elisabeth Lane University of West London Ealing, London UNITED KINGDOM
<b>First Author:</b>	Elisabeth Lane
<b>Order of Authors:</b>	Elisabeth Lane Neda Azarmehr Jevgeni Jevsikov James P Howard Matthew J Shun-shin Graham D Cole Darrel P Francis Massoud Zolgharni
<b>Abstract:</b>	<p><b>Background</b></p> <p>Accurate identification of end-diastolic and end-systolic frames in echocardiographic cine loops is important, yet challenging, for human experts. Manual frame selection is subject to uncertainty, affecting crucial clinical measurements, such as myocardial strain. Therefore, the ability to automatically detect frames of interest is highly desirable.</p> <p><b>Methods</b></p> <p>We have developed deep neural networks, trained and tested on multi-centre patient data, for the accurate identification of end-diastolic and end-systolic frames in apical four-chamber 2D multibeat cine loop recordings of arbitrary length. Seven experienced cardiologist experts independently labelled the frames of interest, thereby providing infallible annotations, allowing for observer variability measurements.</p> <p><b>Results</b></p> <p>When compared with the ground-truth, our model shows an average frame difference of <math>-0.09 \pm 1.10</math> and <math>0.11 \pm 1.29</math> frames for end-diastolic and end-systolic frames, respectively. When applied to patient datasets from a different clinical site, to which the model was blind during its development, average frame differences of <math>-1.34 \pm 3.27</math> and <math>-0.31 \pm 3.37</math> frames were obtained for both frames of interest. All detection errors fall within the range of inter-observer variability.</p> <p><b>Conclusions</b></p> <p>The proposed automated model can identify multiple end-systolic and end-diastolic frames in echocardiographic videos of arbitrary length with performance indistinguishable from that of human experts, but with significantly shorter processing time.</p>
<b>Suggested Reviewers:</b>	Xujiong Ye Professor of Medical Imaging & Computer Vision, University of Lincoln xye@lincoln.ac.uk

	Relevant expertise in image processing and deep learning.
	Hui Wang Professor of Computer Science, Ulster University h.wang@ulster.ac.uk Relevant expertise in AI and deep learning.
	Charlotte Manisty Clinical Senior Lecturer in CMRI and Heart Failure, UCL: University College London c.manisty@ucl.ac.uk Relevant expertise in echocardiography.
	Michael Mielewczik Agroecosystems Modeller, Rothamsted Research Michael.mielewczik@rothamsted.ac.uk Relevant expertise in algorithm development.
<b>Opposed Reviewers:</b>	

None Declared



Intelligent Sensing and Vision  
Research Group, University of West  
London

The School of Computing and  
Engineering  
University of West London  
St Mary's Road  
Ealing  
London W5 5RF

**E. S Lane** B.A. (Hons), PGCE,  
MSc  
PhD Student

Tel: 07950213262  
Email: Elisabeth.Lane@uwl.ac.uk

January 21, 2021

Edward Ciaccio, PhD  
Editor-in-Chief  
Computers in Biology and Medicine

Dear Dr Ciaccio,

**Re: Multibeat Echocardiographic Phase Detection Using Deep Neural Networks**

We are delighted to submit the enclosed manuscript to *Computers in Biology and Medicine*. Fast, reproducible identification of key phases from multiple continuous heart beats in variable-length echocardiographic videos is crucial for the accurate diagnosis and management of heart disease in clinical practice. Previous research has been limited to fixed-length, single-centre video data and focussed upon the identification of just one heartbeat.

This study addresses the issue of continuous multibeat phase detection in arbitrarily long videos from different vendors. It tests the accuracy of the developed deep neural network against datasets from multiple centres, including a publicly available dataset for the purpose of benchmarking against future studies.

It shows that:

- fully automated identification of ED and ES frames derived from 2D echocardiographic images, independent from an accompanying ECG signal, is feasible using deep neural networks
- the model performance is like that of human experts, with its detection error falling within the range of inter-observer variability. It can, therefore, be used to reliably identify multiple ED and ES frames from videos of arbitrary length
- The performance of the automated model, measured as the processing time, is superior to that of human operators, where an improvement of >20 times was observed

We believe this paper is a significant step forward in accurately identifying multiple key phases in echocardiographic video data of various lengths and from multiple centres. We think the study will be of great interest to cardiology professionals and researchers in the field of deep learning and medical image processing.

Yours sincerely

A handwritten signature in black ink that reads "Elane".

Elisabeth Lane

# Multibeat Echocardiographic Phase Detection Using Deep Neural Networks

Elisabeth S Lane<sup>1\*</sup>, Neda Azarmehr<sup>2</sup>, Jevgeni Jevsikov<sup>1</sup>, James P Howard<sup>2</sup>, Matthew J Shunshin<sup>2</sup>, Graham D Cole<sup>2</sup>, Darrel P Francis<sup>2</sup>, Massoud Zolgharni<sup>1,2</sup>

*<sup>1</sup>School of Computing and Engineering, University of West London, London, United Kingdom*

*<sup>2</sup>National Heart and Lung Institute, Imperial College, London, United Kingdom*

## Highlights:

- Identification of key timepoints from echocardiograms is important, yet challenging
- Accurate and fast automated frame detection methods are sought
- A deep learning framework for identification in arbitrarily long videos is presented
- Tested on multi-centre patient data acquired from different imaging equipment
- The model identifies frames with performance indistinguishable from a human expert

\* Corresponding author: School of Computing and Engineering, University of West London, St Mary's Rd, Ealing, London, United Kingdom. W5 5RF. E-mail address: Elisabeth.Lane@uwl.ac.uk.

# Multibeat Echocardiographic Phase Detection Using Deep Neural Networks

Elisabeth S Lane<sup>1\*</sup>, Neda Azarmehr<sup>2</sup>, Jevgeni Jevsikov<sup>1</sup>, James P Howard<sup>2</sup>, Matthew J  
Shun-shin<sup>2</sup>, Graham D Cole<sup>2</sup>, Darrel P Francis<sup>2</sup>, Massoud Zolgharni<sup>1,2</sup>

<sup>1</sup>*School of Computing and Engineering, University of West London, London, United Kingdom*

<sup>2</sup>*National Heart and Lung Institute, Imperial College, London, United Kingdom*

## Abstract

**Background:** Accurate identification of end-diastolic and end-systolic frames in echocardiographic cine loops is important, yet challenging, for human experts. Manual frame selection is subject to uncertainty, affecting crucial clinical measurements, such as myocardial strain. Therefore, the ability to automatically detect frames of interest is highly desirable.

**Methods:** We have developed deep neural networks, trained and tested on multi-centre patient data, for the accurate identification of end-diastolic and end-systolic frames in apical four-chamber 2D multibeat cine loop recordings of arbitrary length. Seven experienced cardiologist experts independently labelled the frames of interest, thereby providing infallible annotations, allowing for observer variability measurements.

**Results:** When compared with the ground-truth, our model shows an average frame difference of  $-0.09 \pm 1.10$  and  $0.11 \pm 1.29$  frames for end-diastolic and end-systolic

\* Corresponding author: School of Computing and Engineering, University of West London, St Mary's Rd, Ealing, London. United Kingdom. W5 5RF. E-mail address: Elisabeth.Lane@uwl.ac.uk.

frames, respectively. When applied to patient datasets from a different clinical site, to which the model was blind during its development, average frame differences of  $-1.34 \pm 3.27$  and  $-0.31 \pm 3.37$  frames were obtained for both frames of interest. All detection errors fall within the range of inter-observer variability.

**Conclusions:** The proposed automated model can identify multiple end-systolic and end-diastolic frames in echocardiographic videos of arbitrary length with performance indistinguishable from that of human experts, but with significantly shorter processing time.

**Keywords:** Echocardiography, Cardiac imaging, Deep learning, Phase detection

## 1. Introduction

Assessment of Left ventricular (LV) function is of principal importance during an echocardiographic examination and is crucial for accurate patient evaluation.

Echocardiography continues to be the most common technique in clinical practice for the quantification of LV function markers; such as ejection fraction (EF) and global longitudinal strain (GLS) [1]. Measurements usually relate to time points, such as end-diastole (ED) and end-systole (ES). Therefore, accurate detection of the end of the LV systole and diastole phases constitutes a critical step in any echocardiographic exam.

### *1.1. The need for fully automated systems*

The importance of accurate identification of ED and ES frames was recently demonstrated by Mada et al. [2]. An error of just two to three frames in detecting ES elicits an approximate 10% difference in segmental ES strain. Furthermore, the sensitivity of frame selection is greater in relation to the left bundle branch block. As highlighted by Amundsen [3], the consequence of misidentification of ED and ES frames can be extensive; impairing concordance between observers in both research and clinical practice. Therefore, automated methods for the resolution of accurate ED and ES phase detection could greatly contribute to improving the consistency of echocardiographic quantification.

The process of identifying ED and ES frames in video data is manually performed by trained clinicians via on-screen visual selection. ED frames can be determined using cues such as mitral valve closure, ECG R-wave and maximum LV volume. Whereas ES frames are commonly defined by mitral valve opening, minimal LV volume, aortic valve closure, or the end of the ECG T-wave. However, due to subtle frame-on-frame spatial differences, and complex temporal relationships virtually invisible to the human eye, manual detection presents a significant barrier to consistent diagnosis due to intra- and inter-observer variability lacking reproducibility and precision [4].

We previously identified the medial disagreement between accredited and experienced experts as 3 frames [5] when performing manual identification. Therefore, reliable and reproducible methods for ED and ES frame detection would allow for the development of fully automated techniques. Thus, meeting the objective of accurate quantification of



LV function, in addition to automated calculation of EF and stroke volume, GLS and wall thickening.

### *1.2. Value of independence from ECG*

Often, cardiac timing is determined through analysis of an accompanying ECG signal during an echocardiogram exam. Despite providing information enabling the computation of some clinically important parameters, such as temporal intervals from the R-wave peaks, ECG recordings require the connection of multiple cables which is time-consuming and, at times, inconvenient. In an era when highly portable scanners can be used to undertake focused studies lasting just a few minutes [6], the capacity of detecting cardiac timing events, independent from the ECG signal, has potential. Such as integration with automated technology on handheld devices.

Recent studies have attempted to address this problem. In the absence of ECG signal, tissue Doppler data has been used to estimate cardiac cycle length [7] or detect ED frames [8]. Machine learning approaches have also been applied to automatically detect ED and ES frames from 2D echocardiography images (B-mode). This includes manifold learning [9], speckle tracking [10], correlation-based frame-to-frame deviation measures [11,12], nonlinear filtering and boundary detection techniques [13].

More recently, studies have focused on deep learning approaches, such as convolutional neural networks (CNNs) and recurrent neural networks (RNNs). Deep residual recurrent neural networks were applied to phase detection in apical-4-chamber (A4C) echocardiograms [14]. A major limitation of this study is the proposed model only accepts videos with a fixed length of frames, containing just one cardiac cycle.

Presumably, this approach necessitates pre-processing of the input image sequence to isolate a single heartbeat.

The same authors later reported on combining CNN and RNN modules to detect frames of interest [15]. Although varying length inputs (22-59 frames) were used, again their results indicate the videos contained just one cardiac cycle. It is assumed this variation in length was probably due to different frame and heart rates. A summary of all accuracies from previously reported studies, compared with those of our developed models, is provided in the results section.

In addition, 3D CNNs have been applied for the extraction of spatial-temporal features from A4C and apical-2-chamber (A2C) echocardiographic videos [16]. While the study states the model was trained on variable length sequences, the feasibility of the model was demonstrated only on a pair of detected ED/ES frames in each video with the QRS-complex in the accompanying ECG signal being used to detect an additional ED frame for the videos starting in systole phase; thereby providing ground-truth for a full cardiac cycle (ED-ES-ED).

### *1.3. Value of multibeat analysis*

In clinical practice, longer recordings would allow for probing of physiological reactions after intervention, where detecting a subtle change in the mean value of a clinical marker, amongst much larger background beat-to-beat variability, is essential.

As stated, recent studies have failed to target the application of automated phase detection in arbitrarily long, uninterrupted echocardiogram recordings containing several full heartbeats. Clinically, it is necessary to monitor changes in crucial markers,

such as EF or strain, from one examination to the next. Measurements taken from only one heartbeat may result in test-retest variability. Therefore, it would be impossible to reliably conclude whether a patient's condition has deteriorated over time. Such variability and inaccuracy can be reduced by averaging measurements over several heartbeats, from the same acquisition. However, this is impractical when a proposed automated model is incapable of returning more than one single pair of ED/ES frame predictions.

We previously reported on the issue of beat-to-beat variability in echocardiography and potential bias due to using a single measurement from a single heartbeat [17, 18, 19].

When random variability between heartbeats is large, clinicians use "clinical judgement" to select which value to report; largely unaware of the devastating consequences for subsequent use. The ability to acquire and automatically analyse many heartbeats within reasonable time constraints would permit clinical protocols to be developed for multi-beat measurements, hence reducing undesirable variability between clinical assessments. In such measurements, the exact time of ED and ES events for each heartbeat is required.

#### *1.4. Clinical deployability*

Without exception, all previously reported studies related to echocardiographic phase detection have used 'private single-centre' clinical datasets for model developments, in both training and testing sets.

Experience shows the performance of models trained using a single dataset may reduce considerably when transferred from one clinical site to another and when applied to

different equipment and protocols [20]. This limitation has proved prohibitive to the development of automated models becoming an acceptable mainstream methodology in daily clinical practice. Evaluating models on multi-centre clinical datasets naturally results in greater patient numbers, a wider range of groups, external validity and lower systematic bias. Thus, resulting in increased generalisability of the developed models in contrast to single-centre dataset studies.

Additionally, the effectiveness of previous approaches is difficult to measure. This is, in part, due to an absence of publicly available benchmarks. Therefore, accurate interpretation of previously reported results from the literature, encompassing a wide range of accuracies, is not feasible since a direct comparison of the frame detection accuracy would require access to the same patient dataset. To date, no study has used and reported accuracies on a publicly available echocardiography dataset.

### *1.5. Main contributions*

Considering the above, the main contributions of this research can be summarised as being the first study of its kind to:

- investigate the feasibility of using a deep learning framework to detect ED and ES frames in echocardiographic videos of arbitrary length, containing several heartbeats
- demonstrate the applicability of the developed framework by including several patient datasets from various clinical centres, where one dataset was used for model development and the others used for testing

- use annotations (ground-truth) from several cardiologist experts, allowing for the examination of inter- and intra-observer variability
- include performance reports on a publicly available dataset, thereby providing a benchmark for future studies

## 2. Methodology

### 2.1. Dataset, ethics and expert annotations

Descriptions of the datasets used in this study is as follows, with a brief summary provided in Table 1.

#### PACS-dataset

A large random sample of echocardiographic studies from different patients performed between 2010 and 2020 was extracted from Imperial College Healthcare NHS Trust's echocardiogram database. Ethical approval was obtained from the Health Regulatory Agency for the anonymised export of large quantities of imaging data. It was not necessary to approach patients individually for consent of data originally acquired for clinical purposes.

The images were acquired during examinations performed by experienced echocardiographers, according to the standard protocols for using ultrasound equipment from GE and Philips manufacturers. Only studies with full patient demographic data, and without intravenous contrast administration, were included. Automated anonymisation was performed to remove the patient-identifiable information. A detailed description, including patient characteristics, can be found in Howard et al. [21].

A CNN model, previously developed in our research group to detect different echocardiographic views [22], was then used to identify and separate the A4C views. A total of 1,000 videos from different patients of varying lengths, containing 1-3 heartbeats, were randomly selected.

Two accredited and experienced cardiology experts manually selected ED and ES frames, each blinded to the judgment of the other. We developed a custom-made program closely replicating the interface of clinical echocardiography hardware.

Operators visually inspected the cine loops by controlled animation using a trackball, or arrow keys. The operators were asked to pick ED and ES frames in the A4C view, as they would in preparation for a Biplane Simpson's measurement in clinical practice.

Selections were made in one or more sessions at their convenience and the time taken was recorded. Videos thought to show more than one view, or misclassified by the CNN as A4C, were excluded, resulting in 898 A4C videos which were then used to define the reference ground-truth ED and ES frames for model developments (both training and testing).

Finally, the original DICOM-formatted image sequences were down sampled by cubic interpolation into a standardised size of 112×112 pixels.

### MultiBeat-dataset

2D echocardiographic images were collected from 40 patients (18 males), with an age range of 27-80 years and a mean age of 59 years, who were referred for echocardiographic examination in the Echocardiography Department at St Mary's Hospital, London. There were no selection criteria, and all patients were in sinus

rhythm. The study was approved by the local ethics committee and written- informed consent was obtained from all patients.

Standard transthoracic echocardiography was performed using a GE Vivid.i (GE Healthcare, London, United Kingdom) ultrasound machine equipped with a 1.5-3.6 MHz transducer (3S-RS). For each subject, an A4C view was obtained in left lateral decubitus position as per standard clinical guidelines [23]. The operators performing the exam were instructed not to change any machine setting (e.g. sector, gain, depth, etc.) and the probe position during the acquisition period to obtain consistent data. The acquisition period was 20 seconds to make sure at least 10 cardiac cycles were present in all videos. The images were stored digitally for subsequent offline analysis. The ECG trace was present on all echocardiographic recordings.

Using the same platform described for the PACS-dataset and in a similar process, five other accredited and experienced cardiology experts manually selected ED and ES frames, again each blinded to the judgment of the others. All videos were then renamed and provided to one operator in a random order for second analysis, no previous result was shown. Thus, the operator was blinded from their own previous frame selections. To maintain independence, the operators annotating the MultiBeat-dataset were different from those who labelled the PACS-dataset.

Where an operator judged a beat to be of low quality, they declared it invalid and did not make a selection. Therefore, since the operators were blinded to each other and their own previous selections, there were heartbeats that were delineated on one or two viewings only by each operator. Only the heartbeats which had 6 delineations (540 in total) were used for testing the models. The location of the typical frames identified by

the operators is plotted as red circular markers in Fig.3. DICOM-formatted image sequences were again down sampled by cubic interpolation into a standardised size of  $112 \times 112$  pixels.

#### EchoNet-dataset

This publicly available dataset [24] contains 10,030 A4C echocardiography videos from individuals who underwent imaging between 2016 and 2018 as part of routine clinical care at Stanford University Hospital. Each video has been cropped and masked to remove text and information outside of the scanning sector.

The image sequences are provided with a dimension of  $112 \times 112$  pixels. The videos are annotated by a registered sonographer. Although some videos may contain a couple of heartbeats, only one pair of ED/ES frames is labelled and were used as the reference ground-truth for testing the developed models (no training was performed using this dataset). A more detailed description of the EchoNet-dataset can be found in [25].



**Table 1.** A summary of the patient datasets used in this study.

<b>Dataset Name</b>	<b>PACS-dataset</b>	<b>MultiBeat-dataset</b>	<b>EchoNet-dataset</b>
<b>Source</b>	Private NHS Trust PACS Archives - Imperial College Healthcare	Private St Mary’s Hospital Acquired for this study	Publicly available Stanford University Hospital <a href="https://github.com/echonet/echonet.github.io/dynamic">echonet.github.io/dynamic</a>
<b>Ultrasound machine</b>	Philips Healthcare (iE33 xMATRIX)	GE Healthcare (Vivid.i) and Philips Healthcare (iE33 xMATRIX)	Siemens Healthineers (Acuson SC2000) and Philips Healthcare (iE33, Epiq 5G, Epiq 7C)
<b>Number of videos/patients</b>	1,000	40	10,030
<b>Length of videos</b>	1-3 heartbeats	$\geq 10$ heartbeats	1 heartbeat
<b>Ground-truth</b>	2 annotations by 2 experts	6 annotations by 5 experts (twice by one expert)	1 annotation
<b>Original size (pixels)</b>	(300-768) $\times$ (400-1024)	422 $\times$ 636	112 $\times$ 112
<b>Frame rate (fps)</b>	23-102	52-80	50
<b>Format</b>	DICOM	DICOM	AVI
<b>Use</b>	Training/Testing	Testing	Testing

## 2.2. Ground-truth definition

The target output, or ground-truth, was generated using reference annotations provided by experts and subsequently used to train the deep learning models.

Treating the definition of ground-truth as a classification task, with three classes for frames (ED, ES, trivial), would result in an imbalanced problem since the ‘trivial’ class

would be greatly over-represented. A recent study put forth the argument of a binary classification approach for cardiac phase detection [16]. However, by allocating the same label to all frames in the diastole phase (1) and systole phase (0), one risks ignoring high-level spatial and temporally related markers, including crucial physiological differences throughout the entire cardiac cycle.

Therefore, the problem was formulated as a regression task. To label individual cardiac frames, it was assumed the predictions for a cardiac sequence should decrease during the systole phase and increase during the diastole phase. Given two consecutive ground truth labels  $y_t$  and  $y_{t-1}$ , we expect  $y_{t-1} < y_t$  in systole, and vice versa. Assigning the target values of 1 and 0 to ED and ES time-points, respectively, and using a linear interpolation function, the target output was defined as:

$$y_t = \begin{cases} -\frac{f_t - f_{ED}}{f_{ES} - f_{ED}}, & \text{in systole phase} \\ \frac{f_t - f_{ES}}{f_{ED} - f_{ES}}, & \text{in diastole phase} \end{cases}$$

Here,  $y_t$  is the ground-truth label for frame  $f_t$  at time-point  $t$  and  $f_{ED}$  and  $f_{ES}$  are the frame numbers for ED and ES events, respectively. Due to varying video length, some contain a combination of singular or multiple events in the image sequence.

### *2.3. Neural network architecture*

Fig.1A. provides an overview of the network architecture. The model comprises (i) CNN unit for the encoding of spatial information for each frame of an echocardiographic video input, (ii) RNN (LSTM) units for the decoding of complex temporal information, and (iii) a regression unit for the prediction of the frames of interest.

**Spatial feature extraction:** First, a CNN unit is used to extract a spatial feature vector from every cardiac frame in the image sequence. A series of well-established architectures were employed for the CNN unit. These include ResNet50, InceptionV3, DenseNet and InceptionResNetV2, details of which can be found in the relevant resources [26 - 29].

**Temporal feature extraction:** LSTM units are used to process the image features extracted from the entire image sequence by the CNN. Stacks of LSTM units (1-layer to 4-layers) were explored, where the output of each LSTM unit not in the final layer is treated as input to a unit in the next.

**Regression unit:** Finally, the output of the LSTM unit is regressed to predict the location of ED and ES frames. The model returns a prediction for each frame in the cardiac sequence (timestep).

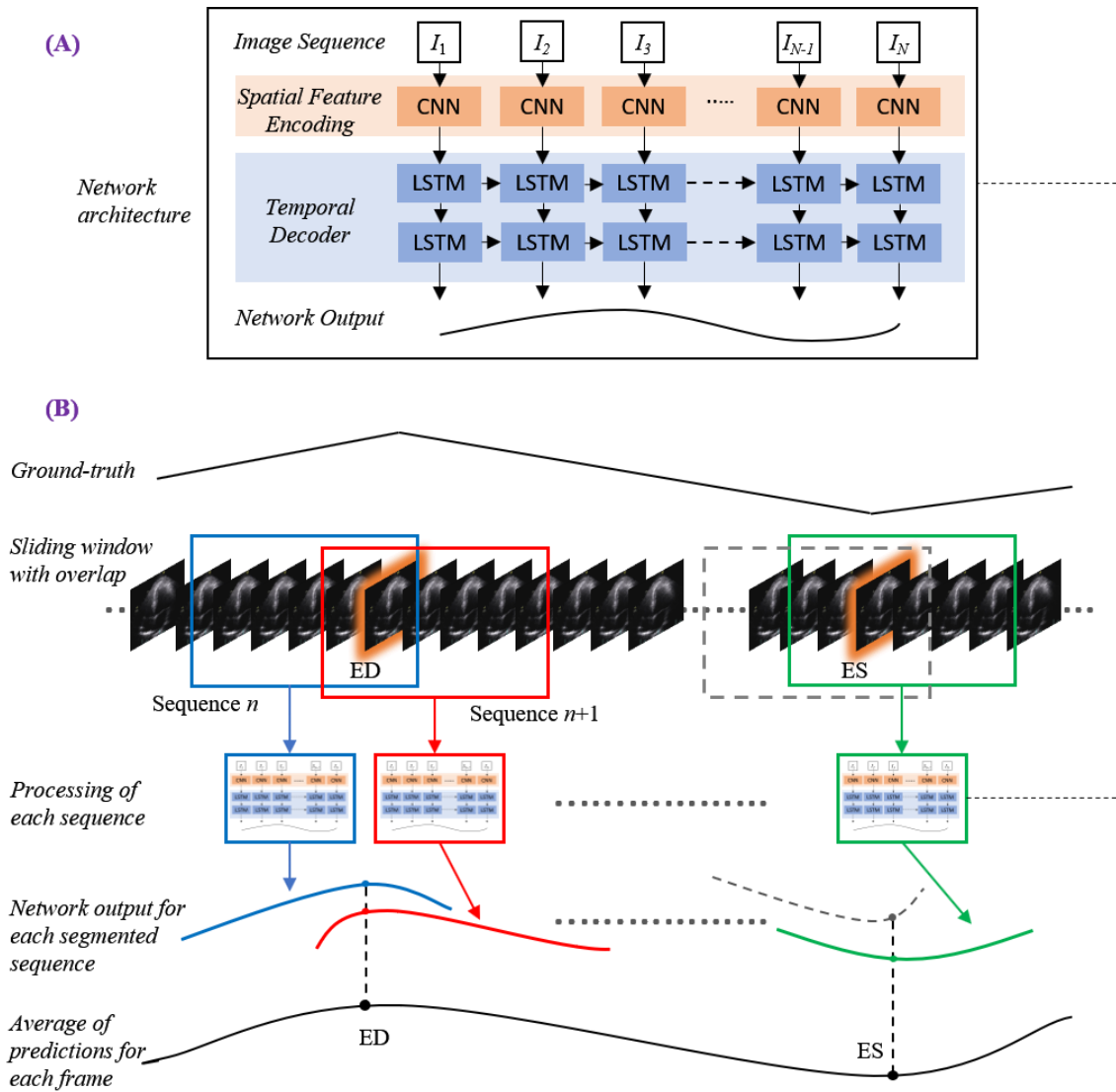
### *2.4. Deep learning framework*

For the model to be capable of processing a video input of arbitrary length, thus containing any number of heartbeats and events, a sliding window approach was

adopted. As illustrated in Fig.1B., a sliding window with a fixed stride segments the cardiac image sequence into overlapping chunks of fixed length. Each segment is then fed into the neural network model, as described above, where a prediction vector  $p_k$  is returned. The final target output is computed as:

$$\hat{y}_t = \frac{1}{K} \sum_{k=1}^K p_{k,t}$$

Where  $p_{k,t}$  is the prediction for frame  $t$  in the  $k^{th}$  segment, and  $K$  is the total number of predictions available for each frame, obtained from overlapping segments. A peak detection algorithm then searched for the local maxima and minima, representing the ED and ES frames, respectively.



**Fig. 1.** Detailed schematic of the proposed deep learning framework: (A) the network architecture combining a CNN unit for spatial feature extraction with RNN (LSTM) blocks for temporal analysis; (B) the sliding window method processing fixed, overlapped, chunked sequences, generating multiple predictions for each frame with the mean calculated for each.

### 2.5. Implementation details

The models were implemented using the TensorFlow 2.0 deep learning framework [30] and trained using an NVIDIA GeForce ® GTX 1080 Ti GPU. Random, on the fly augmentation prevented overfitting, such as rotating between -10 and 10 degrees and spatial cropping between 0 and 10 pixels along each axis. The loss function was the mean squared error (MSE) with Adam optimiser [31] initialised with a learning rate of  $10^{-5}$ . Throughout the study, training was conducted over 70 epochs with a batch size of 2 for all models.

The PACS-dataset was used to train the models, with a data split of 60%, 20% and 20% for training, validation and testing, respectively. Early stopping was employed to avoid overfitting meaning training continued until the validation loss plateaued.

During testing, a sliding window of 30 frames in width with a stride of one was applied, allowing up to 30 predictions of differing temporal importance to be calculated for each timestep. Toward the end of each video, should a segment be fewer than 30 frames in length, it was zero-padded with the added frames removed after completion.

Experimentation proved a stack of 2 LSTM layers was the optimum configuration across all models.

### 2.6. Evaluation metrics

Evaluation of trained network predictions measures the difference between each labelled target  $y_t$ , either ED or ES, and the timestep prediction  $\hat{y}_t$ . Average Absolute

Frame Difference (aaFD) notation is applied, where  $N$  is the number of events within the test dataset:

$$aaFD = \frac{1}{N} \sum_{t=1}^N |y_t - \hat{y}_t|,$$

The mean ( $\mu$ ) and standard deviation ( $\sigma$ ) of the error (i.e. frame differences) were also calculated.

### 3. Results and discussion

#### 3.1. PACS-dataset

The average time (mean $\pm$ SD) taken by the operators to manually annotate ED/ES frames was  $26\pm 11$  seconds, per event. The equivalent time for our automated models, executed on the GPU, was less than 1.5 seconds; significantly faster than the human-led process.

Table 2 details the error in ED and ES frame detection for all videos in the PACS-dataset. The results indicate the level of disagreement between Operator-1 annotations, considered as the ground-truth, compared with automated predictions and those made by Operator-2.

Of all architectures explored, ‘ResNet + 2x-LSTM’ demonstrates the smallest discrepancy with Operator-1. The aaFD was less than one frame in both events, with a

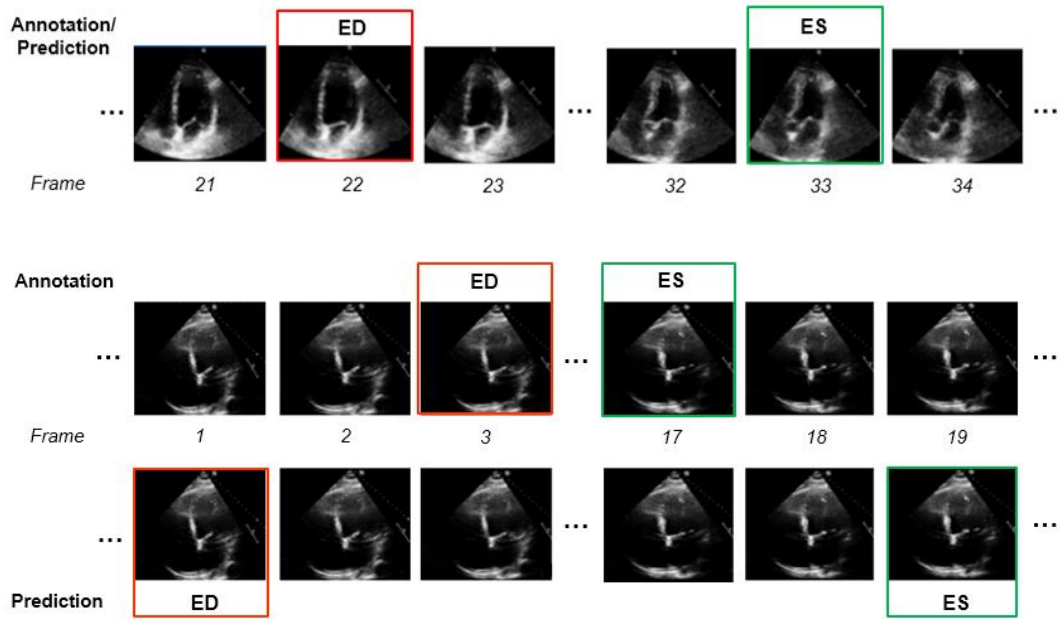
mean difference of  $-0.09 \pm 1.10$  and  $0.11 \pm 1.29$  frames for ED and ES events, respectively.

The discrepancy between Operator-1 and Operator-2 indicates a level of inter-observer variability; with an average absolute (and mean) frame difference of 1.55 ( $-1.35 \pm 1.31$ ) and 1.44 ( $-0.90 \pm 1.80$ ) frames for ED and ES events, respectively. Therefore, suggesting the discrepancy between automated models and Operator-1 is within the range of disagreement observed between two trained human operators.

**Table 2.** Errors in ED and ES frame detection between Operator-1, the reference ground-truth, and predictions with Operator-2, for all testing videos in the PACS-dataset. Detection time is the average time it takes for the model (inference time) or the operator (annotation time) to identify an ED/ES event. The best performing architecture, in terms of lowest detection error and shortest detection time, is highlighted.

Model/Operator	ED		ES		Detection Time (s)
	aaFD	$\mu \pm \sigma$	aaFD	$\mu \pm \sigma$	
<b>ResNet50 + 2x-LSTM</b>	<b>0.66</b>	- <b><math>0.09 \pm 1.10</math></b>	<b>0.81</b>	<b><math>0.11 \pm 1.29</math></b>	<b><math>0.776 \pm 0.33</math></b>
<b>InceptionV3 + 2x LSTM</b>	1.19	$0.48 \pm 1.89$	1.21	$0.66 \pm 1.76$	$0.697 \pm 0.30$
<b>DenseNet + 2x LSTM</b>	0.81	$0.19 \pm 1.30$	0.98	- $0.01 \pm 1.53$	$1.379 \pm 0.59$
<b>InceptionResNetV2 + 2x LSTM</b>	0.77	- $0.02 \pm 1.38$	0.83	$0.23 \pm 1.29$	$1.07 \pm 0.46$
<b>Operator-2 (inter-observer)</b>	1.55	- $1.35 \pm 1.31$	1.44	- $0.90 \pm 1.80$	$26 \pm 11$





**Fig.2.** illustrates model frame predictions and Operator-1 annotations for two arbitrary patients from the PACS-dataset test set and demonstrates typical examples where there is full agreement and conversely, when there is a mismatch.

Due to its lowest error and shortest inference time, the ‘ResNet + 2x-LSTM’ architecture (hereinafter, referred to as the model) was selected for further analysis using the additional MultiBeat and EchoNet datasets. Table 3 provides a comparison between the performance of the model and previously reported deep learning results.

The model outperforms almost all existing approaches, indicating smaller discrepancies with the ground-truth from which it has learnt. However, caution is necessary, as different studies have used different private patient datasets, presumably with various levels of image quality and experience of human experts for annotations. Therefore, a direct comparison between the reported accuracies may not be as informative as desired.

However, the proposed model’s removal of all pre-processing steps and its capacity to identify multiple heartbeats in one long video is, however, an indisputable advantage.

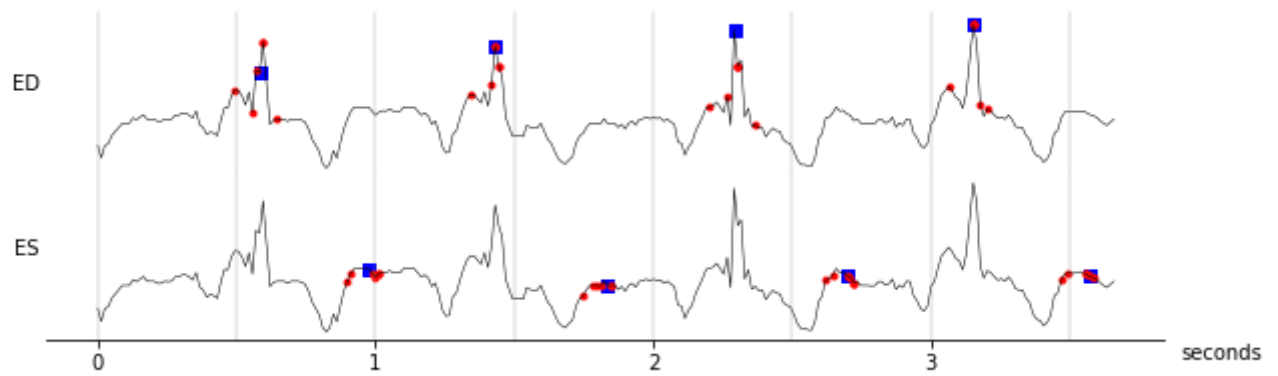
It is also observed that ES frame detection error is consistently higher in all models than that for ED. Potentially owing to minute differences in consecutive frames indicating the mitral valve opening as the onset of the diastole phase is less apparent in the images; thus, resulting in a more challenging detection task for the model.

**Table 3.** Comparison of the proposed model with previously reported deep learning architectures regarding aaFD in ED and ES event detection.

<b>Model</b>	<b>aaFD ED</b>	<b>aaFD ES</b>
<b>ResNet50 + 2x-LSTM</b>	0.66	0.81
<b>ResNet + 2x-LSTM [14]</b>	3.7	4.1
<b>3D CNN + LSTM [16]</b>	1.6	1.7
<b>DenseNet + 2x-Bi-GRU [15]</b>	0.20	1.43

### *3.2 Multibeat-dataset*

An ECG signal was recorded simultaneously alongside image acquisition for the MultiBeat-dataset and appears as a transverse trace on the echo image sequence. The ECG was extracted using a combination of constraints where the trace was assumed to be (i) continuous, (ii) have a consistent colour profile, and (iii) distinct from the background. The extracted signal for a random patient is used in Fig.3. to plot the identified frames by the human operators (6 annotations) and the automated model.



**Fig. 3.** Extracted ECG trace spanning 4 heartbeats for a random patient, delineated showing the 6 annotations from 5 operators (red circles) and automatically identified (blue squares) ED and ES frames.

Table 4 details detection errors between Operator-1 and detections made by the model and other operators. The model disagrees with Operator-1, as do Operators 2-5. Indeed, Operator-1 disagreed with themselves on their second annotation attempt (denoted as Operator-1b). The smallest error was the discrepancy between the two annotations on separate occasions by the same operator (i.e. intra-observer variability), with a mean difference  $-0.22 \pm 2.76$  and  $0.25 \pm 3.75$  for ED and ES events, respectively.

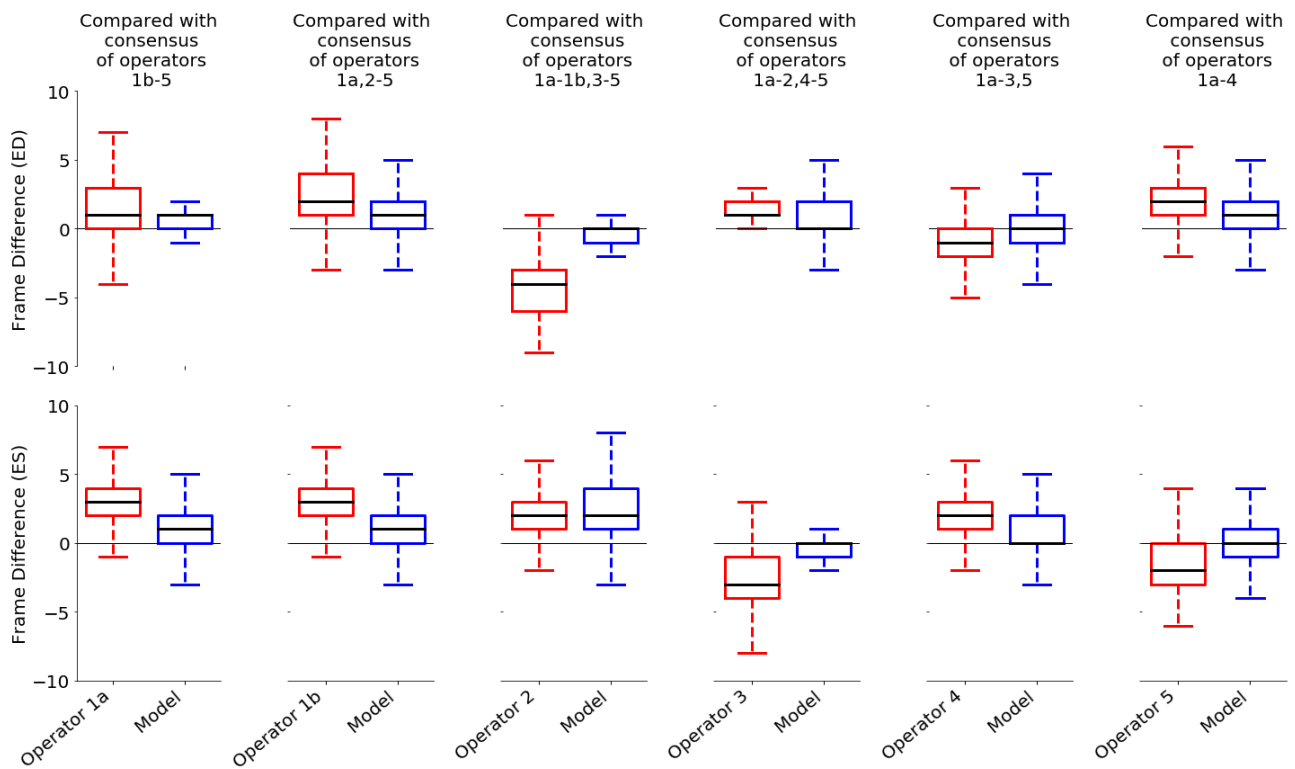
The range of mean difference between two different operators (i.e. inter-observer variability) was  $[-0.87, -5.51] \pm [2.29, 4.26]$  and  $[-0.97, -3.46] \pm [3.67, 4.68]$  for ED and ES events, respectively. The model discrepancy falls within the range of inter-observer variability. Clearly demonstrating the reliability of the model in frame detection, compared with the experienced human experts.

Significantly, both intra- and inter-observer variability measures suggest the experts' disagreement is greater when identifying ES frames. This is consistent with the model's performance, for which higher errors are observed when detecting ES frames.

**Table 4.** Errors in ED and ES frame detection between Operator-1a (considered as ground-truth) and predictions made by the other operators and the model for all testing videos in the MultiBeat-dataset. Operator-1b denotes the second set of annotations by the first human operator, indicating intra-observer variability.

Model/Operator	ED		ES	
	aaFD	$\mu \pm \sigma$	aaFD	$\mu \pm \sigma$
<b>Operator-1a vs Operator-1b</b>	1.96	$-0.22 \pm 2.76$	1.90	$0.25 \pm 3.75$
<b>Operator-1a vs Operator-2</b>	2.65	$-1.22 \pm 4.26$	3.67	$-2.25 \pm 4.68$
<b>Operator-1a vs Operator-3</b>	5.82	$-5.51 \pm 3.77$	4.80	$-4.46 \pm 3.77$
<b>Operator-1a vs Operator-4</b>	1.72	$-0.87 \pm 2.29$	2.01	$-0.97 \pm 3.48$
<b>Operator-1a vs Operator-5</b>	3.27	$-2.96 \pm 2.57$	4.11	$-3.64 \pm 3.67$
<b>Operator-1a vs model</b>	2.62	$-1.34 \pm 3.27$	1.86	$-0.31 \pm 3.37$

To ensure fair comparison between model performance and operators, Fig. 4. plots detection errors. Each human operator is compared with other 5, their consensus (mean) is considered as the reference annotation (red boxplots). The model is also compared with the consensus of the same 5 human annotations (blue boxplots). All 12 panels suggest performance of the model is similar, if not better, to that of an individual operator when using the other operators as a reference standard.



**Fig.4.** Errors in ED and ES frame identification by each operator, expressed relative to the consensus (mean) of all other 5 human annotations (red boxplots). In each case, alongside these errors, are those identified by the model expressed relative to the consensus of the same 5 annotations (blue boxplots). In the box-and-whisker plots, the thick line represents the median, the box represents the quartiles, and the whiskers represent the 2.5% and 97.5% percentiles.

Because different human experts make different judgments, it is not possible for any automated model to agree with all expert annotations all the time. However, it is desirable for automated models to have fewer discrepancies when compared with the performance of human judgment. Given the model was never exposed to this dataset

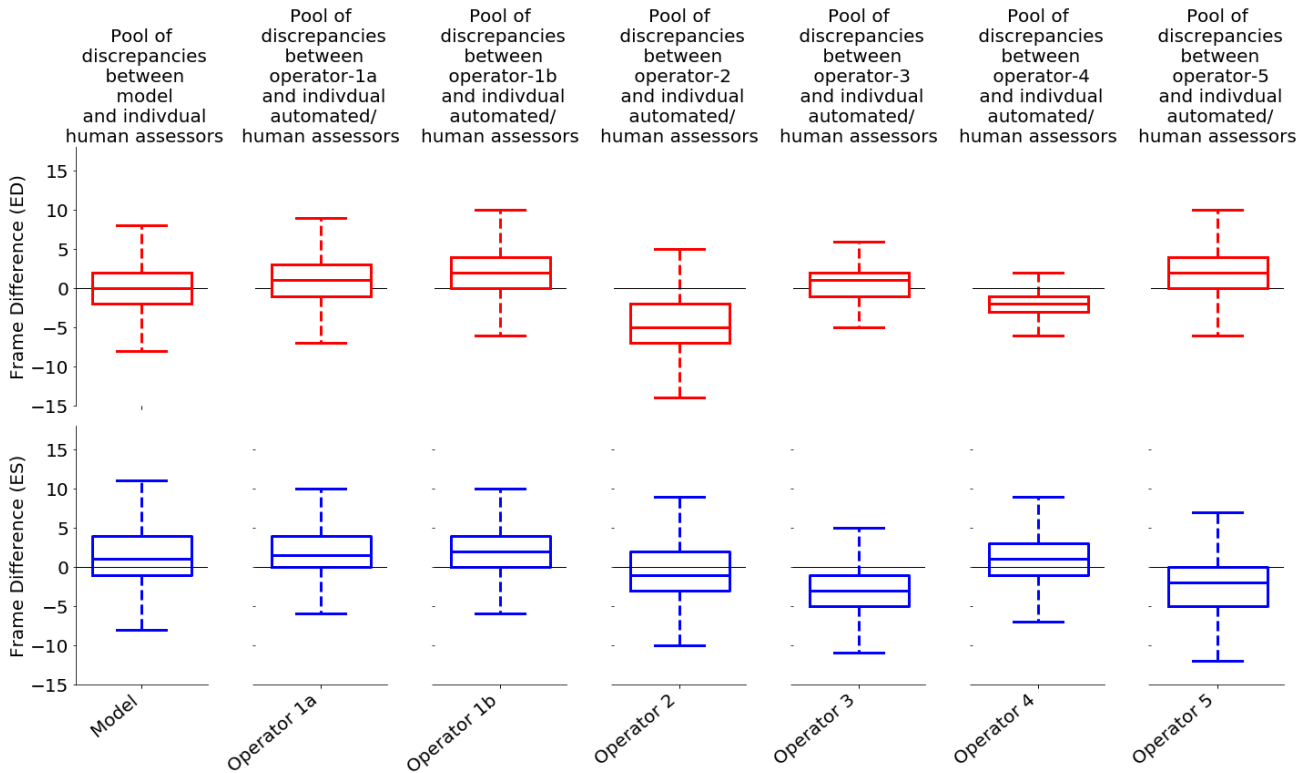
(image sequences, and any of the corresponding annotations), its predictions in ED and ES frame detection can be treated as one of the independent assessors.

Hence, for each heartbeat, there were 7 assessments of the desired frame; 6 human and one automated. Therefore, for each assessor, 6 frame differences were calculated when compared to other human or automated assessors. The pool of these differences across all heartbeats and image sequences indicates the overall performance for each assessor and is shown as boxplots in Fig.5.

Operator-4 demonstrates the smallest range of discrepancies in identification of ED frames (standard deviation of 3.47), but was consistently late, with a bias of -1.50 frames when compared to the consensus of other assessments.

The model had a relatively acceptable discrepancy from the consensus of the human operators, with a mean difference of  $0.39 \pm 3.97$  and  $1.54 \pm 3.80$  frames in ED and ES events, respectively. Indicating the model can be used to detect the frames of interest and that it is as reliable as the experienced human experts.

The range of human operator judgments for each heartbeat (i.e. difference between the earliest and latest manually identified frames) may be assumed as the uncertainty of the reference method and, therefore, the highest accuracy obtainable. The mean frame intervals among all heartbeats was  $8.10 \pm 3.84$  and  $7.01 \pm 4.28$  frames for ED and ES events, respectively.



**Fig.5.** Errors in ED and ES frame identification by each of the assessors across all heartbeats and all patients. For each heartbeat there were 7 assessments (6 human and one automated). Errors are expressed as the pooled data from frame differences between each individual assessor and the 6 others. In the box-and-whisker plots, the thick line represents the median, the box represents the quartiles, and the whiskers represent the 2.5% and 97.5% percentiles.

### 3.3. EchoNet-dataset

In section 3.1, the proposed model was compared against previously reported approaches. However, each study used a different private dataset, making a direct comparison extremely difficult. Here, we applied our model to the publicly available EchoNet-dataset, allowing for future studies to be benchmarked against ours. Like the

MultiBeat-dataset, no further training was carried out, and the dataset was used in its entirety for testing.

From the total number of videos (10,000), 810 were excluded owing to one of the ED or ES events occurring in the penultimate or final frame in the video, hence being unsuitable. EchoNet was made available for a challenge focused on segmentation of the left ventricular. Therefore, it was acceptable to have ED or ES events occurring in first or last frames. The retained 9,190 videos were fed into the model, when no resampling of the images was required as the dataset is provided with a resolution of  $112 \times 112$  pixels; identical to the input size of our model.

An aaFD of 2.30 and 3.49 frames was obtained for ES and ES events, respectively and the mean frame difference was  $0.16 \pm 3.56$  and  $2.64 \pm 3.59$  for ED and ES; well within the range of inter-observer variability observed in section 3.2.

#### **4. Conclusion**

This study sought to investigate the feasibility of fully automated identification of ED and ES frames derived from 2D echocardiographic images and independent from an accompanying ECG signal using deep neural networks. The performance of the proposed method was examined by comparisons to gold standard reference data, obtained from multiple cardiologist experts. It has been demonstrated that the performance of the proposed model is like that of human experts, with its detection error falling within the range of inter-observer variability and can therefore be used to reliably identify multiple ED and ES frames from videos of arbitrary length.



The performance of the automated model, measured as the processing time, is superior to that of human operators, where an improvement of >20 times was observed.

The proposed framework was tested on A4C views; however, it is the authors' belief that the utilised deep learning approaches could be applied to other echocardiographic views. This will be the subject of future studies. As in previous studies, ours investigates 2D echocardiography as the clinically relevant modality. Currently, 3D echocardiography suffers from a considerable reduction in frame rate and image quality, hindering its adoption into routine practice [32]. When such issues are resolved, automatic frame detection in 3D images could be explored. Meanwhile, 2D echocardiography remains unrivalled, particularly when high frame rates are required.

Interpreting the results of our proposed model alongside other published architectures from the literature was not feasible. A direct comparison of detection accuracy would require access to the same patient dataset. At present, no echocardiography dataset, and corresponding annotations specifically prepared for cardiac phase detection, is publicly available. Additionally, representative multi-centre patient data, essential for ensuring any developed model would scale up well to other sites and environments, is currently scarce.

To address such broadly acknowledged shortcomings in the application of deep learning to echocardiography, we are developing Unity (Unity-Imaging.net), a UK collaborative of cardiologists, physiologists and computer scientists under the aegis of the British Society of Echocardiography.

An image analysis interface is under development in the form of a web-based, interactive, real-time platform to capture carefully curated expert annotations from

numerous echo specialists with patient data provided from over twelve sites across the UK. Thus, ensuring coverage of multiple vendors, systems and environments. All developed models designed using this annotation biobank will be made available under open-source agreements at [github.com/intsav](https://github.com/intsav).

**Funding:** This work was supported in part by the British Heart Foundation (Grant no. PG/19/78/34733). E Lane is supported by the Vice Chancellors Scholarship at the University of West London.

## References

- [1] Knackstedt, C., Bekkers, S., Schummers, G., Schreckenber, M., Muraru, D., Badano, L., Franke, A., Bavishi, C., Omar, A. and Sengupta, P., 2015. Fully Automated Versus Standard Tracking of Left Ventricular Ejection Fraction and Longitudinal Strain. *Journal of the American College of Cardiology*, 66(13), pp.1456-1466.
- [2] Mada, R., Lysyansky, P., Daraban, A., Duchenne, J. and Voigt, J., 2015. How to Define End-Diastole and End-Systole?. *JACC: Cardiovascular Imaging*, 8(2), pp.148-157.
- [3] Amundsen, B., 2015. It Is All About Timing!. *JACC: Cardiovascular Imaging*, 8(2), pp.158-160.
- [4] Darvishi, S., Behnam, H., Pouladian, M. and Samiei, N., 2012. Measuring Left Ventricular Volumes in Two-Dimensional Echocardiography Image Sequence

- Using Level-set Method for Automatic Detection of End-Diastole and End-systole Frames. *Research in Cardiovascular Medicine*, 1(2), pp.39-45.
- [5] Zolgharni, M., Negoita, M., Dhutia, N., Mielewczik, M., Manoharan, K., Sohaib, S., Finegold, J., Sacchi, S., Cole, G. and Francis, D., 2017. Automatic detection of end-diastolic and end-systolic frames in 2D echocardiography. *Echocardiography*, 34(7), pp.956-967.
- [6] Testuz, A., Muller, H., Keller, P., Meyer, P., Stampfli, T., Sekoranja, L., Vuille, C. and Burri, H., 2012. Diagnostic accuracy of pocket-size handheld echocardiographs used by cardiologists in the acute care setting. *European Heart Journal - Cardiovascular Imaging*, 14(1), pp.38-42.
- [7] Zolgharni, M., Francis, D., Dhutia, N., Cole, G., Bahmanyar, M., Jones, S., Sohaib, S., Tai, S., Willson, K. and Finegold, J., 2014. Automated Aortic Doppler Flow Tracing for Reproducible Research and Clinical Measurements. *IEEE Transactions on Medical Imaging*, 33(5), pp.1071-1082.
- [8] Jahren, T., Steen, E., Aase, S. and Solberg, A., 2020. Estimation of End-Diastole in Cardiac Spectral Doppler Using Deep Learning. *IEEE Transactions on Ultrasonics, Ferroelectrics, and Frequency Control*, 67(12), pp.2605-2614.
- [9] Shalhaf, A., Behnam, H., Gifani, P. and Alizadeh-Sani, Z., 2011. Automatic detection of end systole and end diastole within a sequence of 2-D echocardiographic images using modified Isomap algorithm. 2011 1st Middle East Conference on Biomedical Engineering.

- [10] Aase, S., Snare, S., Dalen, H., Stoylen, A., Orderud, F. and Torp, H., 2010. Echocardiography without electrocardiogram. *European Journal of Echocardiography*, 12(1), pp.3-10.
- [11] Tridandapani, S., Fowlkes, J. and Rubin, J., 2005. Echocardiography-Based Selection of Quiescent Heart Phases. *Journal of Ultrasound in Medicine*, 24(11), pp.1519-1526.
- [12] Wick, C., McClellan, J., Ravichandran, L. and Tridandapani, S., 2013. Detection of Cardiac Quiescence From B-Mode Echocardiography Using a Correlation-Based Frame-to-Frame Deviation Measure. *IEEE Journal of Translational Engineering in Health and Medicine*, 1, pp.1900211-1900211.
- [13] Ravichandran, L., Wick, C., McClellan, J., Liu, T. and Tridandapani, S., 2014. Detection of Quiescent Cardiac Phases in Echocardiography Data Using Nonlinear Filtering and Boundary Detection Techniques. *Journal of Digital Imaging*, 27(5), pp.625-632.
- [14] Dezaki, F., Dhungel, N., Abdi, A., Luong, C., Tsang, T., Jue, J., Gin, K., Hawley, D., Rohling, R. and Abolmaesumi, P., 2017. Deep Residual Recurrent Neural Networks for Characterisation of Cardiac Cycle Phase from Echocardiograms. *Deep Learning in Medical Image Analysis and Multimodal Learning for Clinical Decision Support*, pp.100-108.
- [15] Taheri Dezaki, F., Liao, Z., Luong, C., Girgis, H., Dhungel, N., Abdi, A., Behnami, D., Gin, K., Rohling, R., Abolmaesumi, P. and Tsang, T., 2019. Cardiac Phase Detection in Echocardiograms With Densely Gated Recurrent

- Neural Networks and Global Extrema Loss. *IEEE Transactions on Medical Imaging*, 38(8), pp.1821-1832.
- [16] Fiorito, A., Ostvik, A., Smistad, E., Leclerc, S., Bernard, O. and Lovstakken, L., 2018. Detection of Cardiac Events in Echocardiography Using 3D Convolutional Recurrent Neural Networks. 2018 IEEE International Ultrasonics Symposium (IUS).
- [17] Pabari, P., Willson, K., Stegemann, B., van Geldorp, I., Kyriacou, A., Moraldo, M., Mayet, J., Hughes, A. and Francis, D., 2010. When is an optimization not an optimization? Evaluation of clinical implications of information content (signal-to-noise ratio) in optimization of cardiac resynchronization therapy, and how to measure and maximize it. *Heart Failure Reviews*, 16(3), pp.277-290.
- [18] Moraldo, M., Cecaro, F., Shun-Shin, M., Pabari, P., Davies, J., Xu, X., Hughes, A., Manisty, C. and Francis, D., 2013. Evidence-based recommendations for PISA measurements in mitral regurgitation: systematic review, clinical and in-vitro study. *International Journal of Cardiology*, 168(2), pp.1220-1228.
- [19] Shun-Shin, M. and Francis, D., 2012. Why Are Some Studies of Cardiovascular Markers Unreliable? The Role of Measurement Variability and What an Aspiring Clinician Scientist Can Do Before It Is Too Late. *Progress in Cardiovascular Diseases*, 55(1), pp.14-24.
- [20] Zech, J., Badgeley, M., Liu, M., Costa, A., Titano, J. and Oermann, E., 2018. Variable generalization performance of a deep learning model to detect pneumonia in chest radiographs: A cross-sectional study. *PLOS Medicine*, 15(11), p.e1002683.

- [21] Howard, J., Tan, J., Shun-Shin, M., Mahdi, D., Nowbar, A., Arnold, A., Ahmad, Y., McCartney, P., Zolgharni, M., Linton, N., Sutaria, N., Rana, B., Mayet, J., Rueckert, D., Cole, G. and Francis, D., 2020. Improving ultrasound video classification: an evaluation of novel deep learning methods in echocardiography. *Journal of Medical Artificial Intelligence*, 3, pp.4-4.
- [22] Azarmehr, N., Ye, X., Howard, J.P., Lane, E. S., Labs R., Shun-shin M. J., Cole, D. G., Bidaut, L., Francis, D.P. and Zolgharni, M., 2021. Neural Architecture Search of Echocardiography View Classifiers. (under-review).
- [23] Lang, R., Bierig, M., Devereux, R., Flachskampf, F., Foster, E., Pellikka, P., Picard, M., Roman, M., Seward, J. and Shanewise, J., 2006. Recommendations for chamber quantification☆. *European Journal of Echocardiography*, 7(2), pp.79-108.
- [24] Echonet.github.io. 2021. *Echonet Dynamic*. [online] Available at: <<https://echonet.github.io/dynamic/>> [Accessed 19 January 2021].
- [25] Ouyang, D., He, B., Ghorbani, A., Yuan, N., Ebinger, J., Langlotz, C., Heidenreich, P., Harrington, R., Liang, D., Ashley, E. and Zou, J., 2020. Video-based AI for beat-to-beat assessment of cardiac function. *Nature*, 580(7802), pp.252-256.
- [26] He, K., Zhang, X., Ren, S. and Sun, J., 2016. Deep Residual Learning for Image Recognition. 2016 IEEE Conference on Computer Vision and Pattern Recognition (CVPR).

- [27] Szegedy, C., Vanhoucke, V., Ioffe, S., Shlens, J. and Wojna, Z., 2016. Rethinking the Inception Architecture for Computer Vision. 2016 IEEE Conference on Computer Vision and Pattern Recognition (CVPR).
- [28] Huang, G., Liu, Z., Van Der Maaten, L. and Weinberger, K., 2017. Densely Connected Convolutional Networks. 2017 IEEE Conference on Computer Vision and Pattern Recognition (CVPR).
- [29] Szegedy, C., Ioffe, S., Vanhoucke, V. and Alemi, A., 2017. Inception-v4, Inception-ResNet and the Impact of Residual Connections on Learning. Proceedings of the AAAI Conference on Artificial Intelligence, 31(1).
- [30] TensorFlow. 2021. Tensorflow Core | Machine Learning For Beginners And Experts. [online] Available at: <<https://www.tensorflow.org/overview>> [Accessed 20 January 2021].
- [31] Kingma, D. and Ba, J., 2015. Adam: A Method For Stochastic Optimization. Published as a conference paper at ICLR 2015, pp.1-15.
- [32] Cheng, K., Monaghan, M., Kenny, A., Rana, B., Steeds, R., Mackay, C. and van der Westhuizen, D., 2018. 3D echocardiography: benefits and steps to wider implementation. British Journal of Cardiology.