

Louisiana Tech University

## Louisiana Tech Digital Commons

---

College of Engineering and Science Annual  
Reports

College of Engineering and Science

---

Spring 2013

### Annual Report 2013

Catherine Fraser

*Louisiana Tech University*

Estevan Garcia

*Louisiana Tech University*

Follow this and additional works at: <https://digitalcommons.latech.edu/coes-annual-reports>

---

#### Recommended Citation

Fraser, Catherine and Garcia, Estevan, "Annual Report 2013" (2013). *College of Engineering and Science Annual Reports*. 3.

<https://digitalcommons.latech.edu/coes-annual-reports/3>

This Book is brought to you for free and open access by the College of Engineering and Science at Louisiana Tech Digital Commons. It has been accepted for inclusion in College of Engineering and Science Annual Reports by an authorized administrator of Louisiana Tech Digital Commons. For more information, please contact [digitalcommons@latech.edu](mailto:digitalcommons@latech.edu).



**LOUISIANA TECH UNIVERSITY**  
COLLEGE OF ENGINEERING AND SCIENCE

**2012**  
**THIRTEEN**  
ANNUAL REPORT



**BEYOND THE FINISH LINE**

# CONTENTS

## BEYOND THE FINISH LINE



**03**  
COLLEGE PROFILE



**05**  
PROGRAM NEWS



**09**  
GRADUATE NEWS



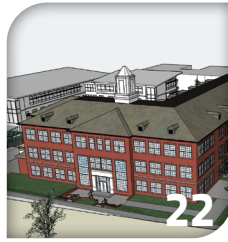
**10**  
UNDERGRADUATE NEWS



**15**  
RESEARCH NEWS



**17**  
ALUMNI NEWS



**22**  
DONORS AND GIFTS



**26**  
INDUSTRIAL PARTNERS

### 2012-2013 LEADERSHIP TEAM

**Stan Napper** > Dean

**Charlotte Wilkerson** > Executive Administrative Assistant

**Jenna Carpenter** > Associate Dean, Administration and Strategic Initiatives

**Mel Corley** > Director, Civil Engineering, Construction Engineering Technology and Mechanical Engineering

**Sumeet Dua** > Interim Director, Computer Science, Electrical Engineering, and Electrical Engineering Technology

**Catherine Fraser** > Executive Director, Engineering & Science Foundation; Director of Development

**Eric Guilbeau** > Director, Biomedical Engineering

**Hisham Hegab** > Associate Dean, Undergraduate Studies; Director, Nanosystems Engineering

**Carrie Kelly** > Budget Manager

**Jim Palmer** > Interim Associate Dean, Graduate Studies; Director, Chemical Engineering and Industrial Engineering

**Ramu Ramachandran** > Associate Dean, Research

**Lee Sawyer** > Director, Chemistry and Physics

**Bernd Schroeder** > Director, Mathematics and Statistics

### STAY CONNECTED

**College of Engineering and Science**  
Louisiana Tech University  
600 Dan Reneau Drive  
Ruston, LA 71272



**coes.latech.edu**  
Learn more about the  
College of Engineering and Science.



**facebook.com/LaTechCOES**  
Get the latest Tech and College  
news.



**COES Louisiana Tech's Channel**  
Browse our channel for student  
and faculty videos.



**Join our LinkedIn Group**  
Discuss events and network with  
College alumni.



**Twitter.com/LATechCOES**  
Ask questions and get news.

The College of Engineering and Science Annual Report is made possible through the support of the College of Engineering and Science Foundation and was published without the use of taxpayer funds. We owe a debt of gratitude to our alumni, friends, parents and corporate sponsors.

Louisiana Tech, a member of the University of Louisiana System, is an equal opportunity educator and employer.

## FROM THE DEAN

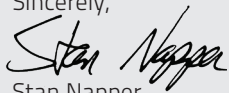
### Beyond the Finish Line *Meeting the Challenges*

Dear Friends,  
As we end the 2012-2013 Academic Year, I will begin a new assignment as Vice President for Research and Development at Louisiana Tech. While I am excited about what lies ahead, this is a bittersweet moment for me. Although my office will move to Wyly Tower, I will still be on campus and hope to continue working with alumni, faculty and students in my new capacity, and see you when you are here for Tech events or advisory board meetings.

As I look back over my tenure as dean, I am so proud of our faculty, staff and students and what we have accomplished together. Our innovative, hands-on approach to undergraduate education is being emulated around the world, and our scientists and researchers are putting Louisiana Tech on the map. Our faculty has been involved in ground-breaking science, like the discovery of the Higgs-boson, in advanced research in critical areas and in the development of innovative technology for solutions to immediate challenges. Our students have also been recognized. The Eco-marathon team has won awards every year they have competed at the annual Shell event, and our National Society of Black Engineers chapter has been named National Distinguished Chapter of the Year two consecutive years.

I am especially proud of our Engineering and Science Foundation Board of Directors. They have stepped up their support of our Campaign for a New Integrated Engineering and Science Building, and I expect we will achieve our goal of raising \$7.5M in private funds by the end of the calendar year. I plan to remain involved in this project even as I move into my new role as Vice President. I still believe it is the single most pressing need of the College today. In closing, I will not say good-bye. I will say thank you for your support and guidance, and I look forward to seeing you around campus!

Sincerely,



Stan Napper,  
Dean and Thigpen Professor



“Our vision is to be the best college in the world at integrating engineering and science in education and research.”



**2004**



**1995**

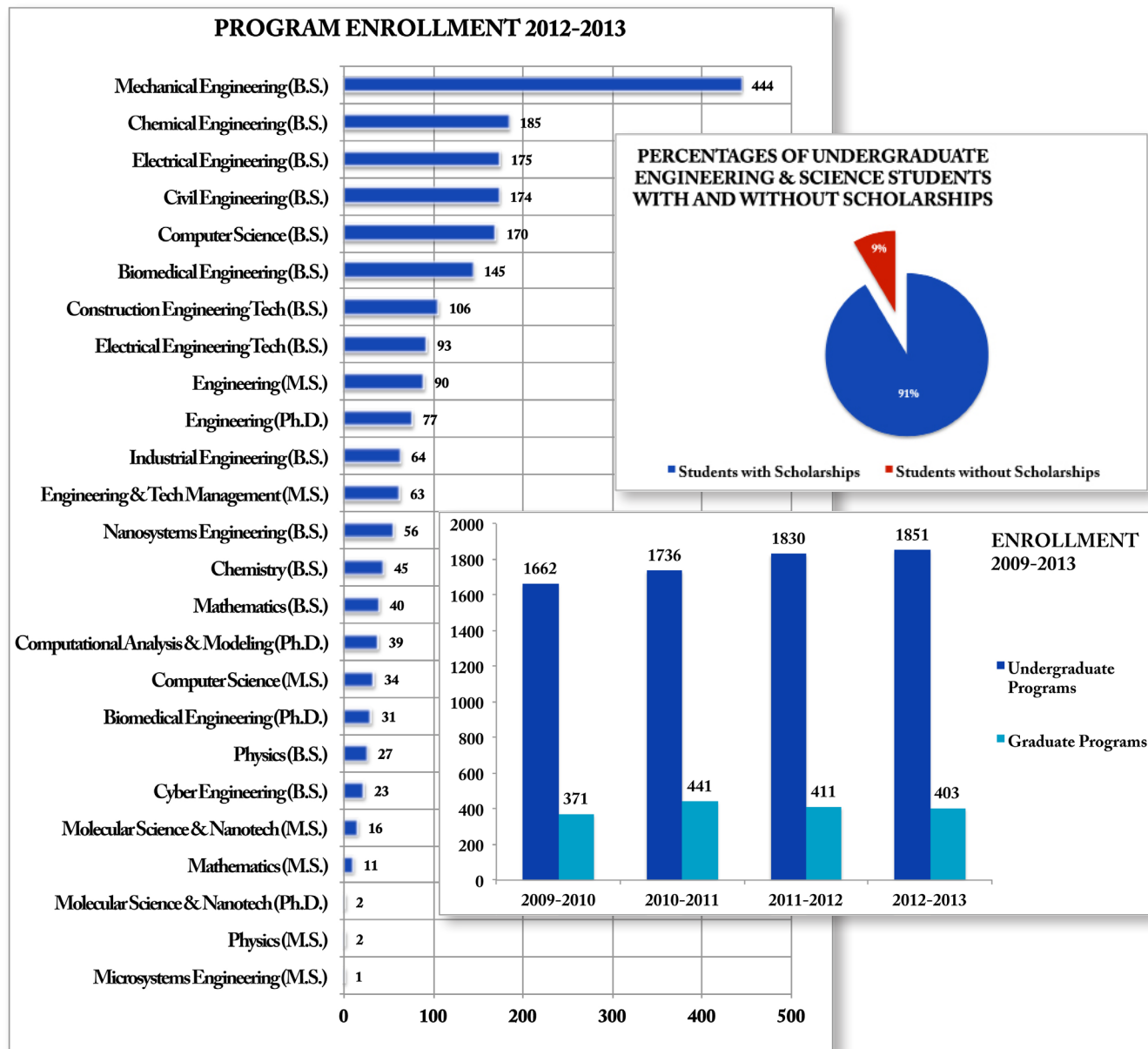


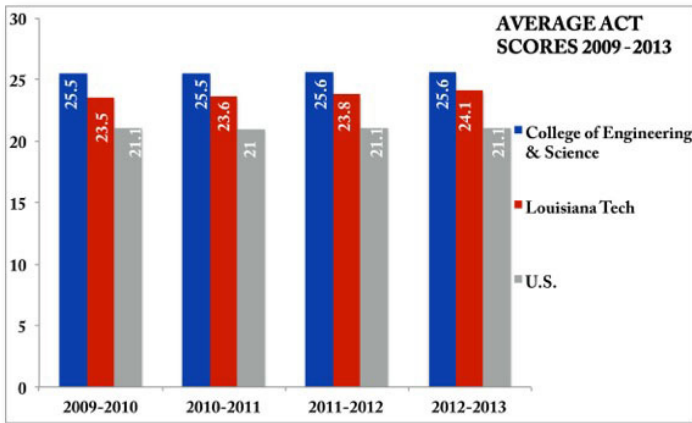
**1983**

# The College of Engineering and Science by the Numbers

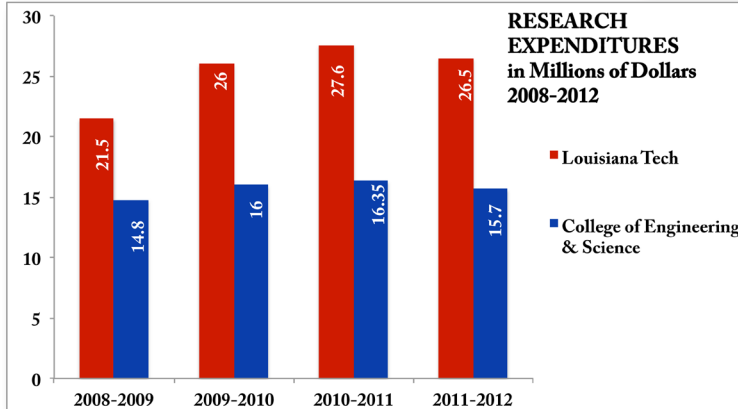
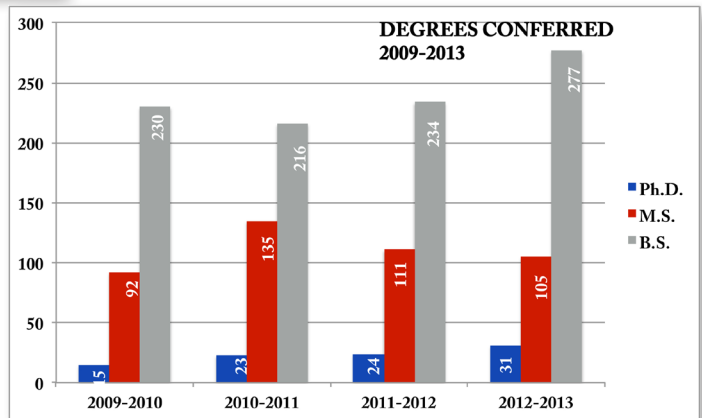
**The College offered 25 degree programs in 2012-2013:**

**14 B.S. degrees (8 engineering, 4 science, 2 technology), 7 M.S. degrees, 4 Ph.D. degrees  
(and a record breaking 31 Ph.D. graduates!)**





**Research for fiscal year 2011-2012**  
**\$36.6 million in research contracts**  
**182 active research awards**



*"I am delighted to serve as the Interim Dean of the College of Engineering and Science. It has been exciting to be a part of the progress I have seen in our College and at our University during the past two decades, and I am eager to play a part in the future innovations that are sure to develop."*



## College Announces Interim Dean

Dr. Hisham Hegab, Director of Nanosystems Engineering, has been named Interim Dean of the College. Most recently, Hegab served as Associate Dean for Undergraduate Studies. Hegab is a New Orleans native and has been at Louisiana Tech for 17 years. He earned his bachelor's degree in mechanical engineering from Tech and received his master's and doctoral degrees from Georgia Tech.

# 2012 CONVOCATION



GUEST SPEAKER  
**Dr. James M. Coffin**

## The path to a cure for pediatric cancer

*James "Jamie" Coffin, Chemistry 1985 alumnus, was the 2012 College Convocation speaker.*

### Biomedical Engineering

Research from **Dr. Mark DeCoster**, Associate Professor of Biomedical Engineering, and his lab is featured in a cover article of the June 2013 edition of *Genetic Engineering & Biotechnology News*.

**Dr. Leon Iasemidis**, Professor and Rhodes Eminent Scholar Chair of Biomedical Engineering, was invited to give a keynote address at the "International Conference on Innovation in Medicine & Healthcare" at the University of Piraeus in Greece.



**Dr. Teresa Murray**, Assistant Professor of Biomedical Engineering, received national recognition of excellence and funding from the National Institutes of Health for her proposal on research into the relationship between glial cells and brain function.

Murray also organized the ADVANCE Networking Grant Seminar Series on Stem Cells and Biomedical Research with **Dr. Jamie Newman**, Assistant Professor of Biology. Speakers included a U.S. District Judge and experts from Louisiana universities who spoke on stem cell research, gene patenting and research equipment available at Louisiana Tech and LSU Health Sciences Center in Shreveport.

### Chemical Engineering

**Dr. Shengnian Wang**, Assistant Professor of Chemical Engineering, published three research papers, including one of the top 20 most read articles of April in biomicrofluidics, and one invited book chapter requested by an editor from M.D. Anderson Cancer Center.

**Dr. Daniela Mainardi**, Associate Professor and Program Chair for Chemical Engineering, has received \$300,000 from the National Science Foundation to partner with North Carolina

A&T State University for a Bioenergy Center, and she has published two peer-reviewed articles. Mainardi also received an Outstanding Leadership Award from the College, and an American Institute of Chemical Engineers Excellence and Service Award.

**Dr. Adarsh Radadia**, Assistant Professor of Chemical Engineering, received funding from the National Institutes of Health, NASA, and the Louisiana Board of Regents for over \$320,000.

**Dr. Brad Ciccirelli**, Lecturer of Chemical and Mechanical Engineering, published an article in *Chemical Engineering Education*, received an Outstanding Faculty Award from the College, and won the prestigious F. Jay Taylor Undergraduate Teaching Award from the University.



**Dr. Eric Sherer**, Assistant Professor of Chemical Engineering, joined the faculty in the fall of 2012.

**Dr. James Palmer**, Associate Dean of Graduate Studies and Professor of Chemical Engineering, was invited to three National Science Foundation

onsite panel reviews, consulted for an area company and presented biofuel research at a Department of Energy Peer Review.

## Chemistry

**Dr. Marilyn Cox**, Lecturer of Chemistry, obtained a grant to buy new computers, a new portable projector and a new projector screen for the Chemistry program. Cox also attended the National American Chemical Society Conference in New Orleans.

**Dr. William Deese**, Professor of Chemistry, received funding from the Louisiana Board of Regents to provide professional development workshops for high school chemistry teachers in the state. Deese also conducted workshops for Community College Chemistry faculty and helped direct the Louisiana Region II Science and Engineering Fair at Louisiana Tech.

**Dr. Ramu Ramachandran**, Associate Dean for Research and Professor of Chemistry, organized the 2012 National Science Foundation Experimental Program to Stimulate Competitive Research RII Symposium, the Nanotechnology for Louisiana Symposium, and the Symposium on Clean Energy, Materials Science, and the Materials Genome Initiative held at the 68th Southwest Regional Meeting of the American Chemical Society. Ramachandran also received funding for three Louisiana Board of Regents proposals that will support graduate programs and research.

## Civil and Construction Engineering Technology

**Dr. Aziz Saber**, Associate Professor of Civil Engineering and program chair for Construction Engineering Technology, was awarded the Federal Highway Administration 2013 High Value Research Award for his extensive studies and published work on the impact of heavy loads on highway infrastructure.

Saber's work was highlighted as the basis for the Louisiana Senate Resolution (SCR123), the Louisiana House Bill (No. 365), and the Revised Statute 387.7 by the Federal Highway Administration.

## Computer Science

**Dr. Sumeet Dua**, Interim Director of Computer Science, Electrical Engineering and Electrical Engineering Technology helped organize the 11th Annual Meeting of the Louisiana Biomedical Research Network, which was held at Louisiana Tech.

**Dr. Mike O'Neal**, Professor of Computer Science, received two patents for Network Foundation Technologies, a company that he founded.



**Dr. Vir Phoha**, Professor of Computer Science, received funding from the Defense Advanced Research Projects Agency for collaboration with the New York Institute of Technology on a project titled "Investigating Cognitive Rhythms as a New Modality for Continuous Authentication."



## Cyber Engineering

The Cyber Engineering program had a successful first year with almost 30 undergraduate students joining the program. That number is expected to double in the 2013-2014 academic year. Cyber Engineering students participated in the annual hackfest, Cyber Storm event.



**Dr. Jean Gourd**, Assistant Professor of Computer Science and Program Chair for Cyber Engineering, received funding from the Air Force Research Laboratory for his work in cryptography.



**Dr. Travis Atkison**, Assistant Professor of Computer Science, led a team of students in the Digital Forensics Challenge, hosted by the Department of Defense Cyber Crime Center.

## Electrical Engineering

**Dr. Sandra Zivanovic**, Associate Professor of Electrical Engineering, and **Dr. Dentcho Genov**, Assistant Professor of Physics, published the peer-reviewed conference proceeding, *Next Generation (Nano) Photonic and Cell Technologies for Solar Energy Conversion III*, and presented their research at two invited talks and two conferences. Zivanovic also attended the annual *Summit of the National Center for Women and Information Technology*.

**Dr. Rastko Selmic**, Associate Professor of Electrical Engineering, received funding from the Department of Defense Small Business Innovative Research Program and a Louisiana Space Consortium NASA Fellowship for a student.



**Dr. Scott Shepard**, Associate Professor of Electrical Engineering, and his Optical Systems research group received roughly \$200,000 in erbium-doped fiber amplifiers from the Ciena Corporation to enable a collaborative research project between Ciena, CenturyLink and Louisiana Tech.

## Industrial Engineering

The **Industrial Ergonomics** class received a Louisiana Board of Regents Enhancement grant to purchase a Biopac Exercise Physiology and Biomechanics system for life science experiments. The program also received funds from the College to purchase four additional systems and software to allow students to study important physiological phenomena.



**Dr. John Easley**, Lecturer of Industrial Engineering, received the College Outstanding Faculty Award.

**Five senior design teams** completed projects sponsored by area businesses this year. The sponsors were Haynes International (Arcadia), General Electric (Shreveport), Alliance Compressors (Natchitoches), Hunt, Guillot and Associates (Ruston) and Plymouth Tube (West Monroe).

## Mathematics and Statistics

**Dr. William Mark Countryman**, Professor of Mathematics and Statistics, retired after 31 years of service.

**Ms. Janie Ainsworth**, Administrative Coordinator of Mathematics and Statistics, will retire after more than 25 years of service to the program.

**Dr. Jenna Carpenter**, Associate Dean for Administration and Strategic Initiatives and Professor of Mathematics and Statistics, was named an American Society for Engineering Education fellow.



**Dr. Galen Turner**, Professor of Mathematics and Statistics, served as the 2012-2013 National Director for Cyber Discovery, a program created at Louisiana Tech in collaboration with the Cyber Innovation Center in Bossier City. Turner also served as the Chief Academic Officer of the National Integrated Cyber Education Research Center (NICERC), housed at the Cyber Innovation Center, and helped expand programs like Cyber Discovery.

## Mechanical Engineering



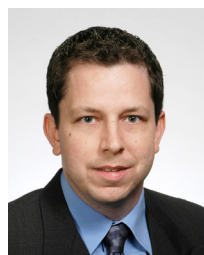
**Dr. Marissa Orr**, Assistant Professor of Mechanical Engineering, joined the program after serving as a post doc at Purdue University. Orr, who has a background in dynamics and research interests in engineering and science education, earned her Ph.D. at Clemson University in 2010.



**Dr. Mel Corley**, Director and Professor of Civil, Mechanical, and Construction Engineering, retired after 33 years of service. Corley has been named Professor *Emeritus* by the College. The Louisiana Tech University Foundation also recognized Corley by presenting him with the 2013 Professorship Award.



**Dr. Henry Cardenas**, Associate Professor of Mechanical Engineering, has been appointed as program chair for Mechanical Engineering. Cardenas also helped launch the Mechanical Engineering Design Consortium which allows corporations to sponsor senior design teams.



**Dr. Kelly Crittenden**, Associate Professor of Mechanical Engineering, led the establishment of a rapid prototyping laboratory for campus-wide access to the latest in digitally enhanced design prototype fabrication.

## Nanosystems Engineering



**Dr. Sandra Zivanovic**, Associate Professor of Electrical Engineering, has been named Program Chair for Nanosystems Engineering for fall 2013.

The Nanosystems Engineering Teaching Laboratory received a new desktop scanning electron microscope.

## Physics

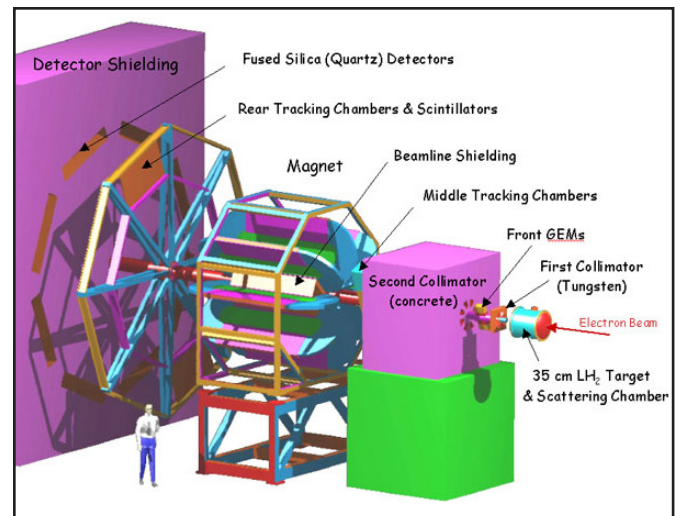
**John Trischler** received the first ever Outstanding Physics Senior award. Trischler, who majored in Physics and Nanosystems Engineering, will pursue graduate studies at Oxford University.



The Sigma Pi Sigma physics honor society visited Kennedy Space Center in January, and they inducted five new students this Spring. **Dr. Lee Sawyer**, Professor of Physics, presented a workshop on "Science & Technology" at the 2012 *Quadrennial Congress of Sigma Pi Sigma* in Orlando, Fla.

The **High Energy Group** contributed to the understanding and control of the ATLAS detector calorimeter and trigger systems and provided grid computing for massively high-throughput data processing on local and state computing clusters connected by the Louisiana Optical Network Initiative (LONI).

The **Nuclear Physics Group** worked with the Qweak experimental program at Thomas Jefferson National Accelerator Lab on a precision test of the standard model of electroweak interactions through the first ever measurement of the weak charge of the proton.



*Qweak experimental model at Thomas Jefferson National Accelerator Facility*



## Tech-CenturyLink Partnership

### *Expanding Education*

Forty CenturyLink employees have earned a graduate certificate in Communications Systems through a partnership between Louisiana Tech's College of Engineering and Science, College of Business, and CenturyLink. A majority of these graduates have gone on to pursue a Master of Science or Master of Business Administration degree at Tech.

## TEDxLouisianaTechUniversity

### *Exchanging Ideas*

Louisiana Tech held its second TEDxLouisianaTechUniversity event this year. The independently organized event was coordinated by Enterprise Center Director Dave Norris and co-organized by Bilal "Billy" Dia (Master's Engineering and Technology Management 2013). Billy helped recruit speakers, including College of Engineering and Science graduate student, Kankana Shukla, who brought along a sidekick for her presentation- an NAO humanoid robot that can answer questions, interact with its environment and



Photo by Ann Marie Queen

even do yoga. Through a comedy routine, Kankana and her robot informed the audience of the growing applications for humanoid robots.



*"I hope to continue to do my part to challenge our students and protect the value of their diplomas..."*

*- Dr Brad Ciccirelli*

## From M.I.T. to Louisiana Tech

### *Making the Case for Education*

To some, leaving the Massachusetts Institute of Technology (M.I.T.) for Louisiana Tech might seem unusual, but for Dr. Brad Ciccirelli and Dr. Jamie Newman, it made perfect sense. While finishing his Ph.D. at M.I.T., Brad had already decided that he wanted to pursue a faculty position that focused solely on teaching.

"There weren't very many engineering programs in the country that were advertising teaching-focused positions, but Louisiana Tech was one of them. I applied for the job here, and, during my interview visit, I was impressed with Tech's commitment to quality undergraduate education."

Jamie was still a graduate student in the biology department at M.I.T working on projects related to gene control when Brad left for Ruston.

"When I completed my degree, Brad had already been at Tech for three years and was really enjoying his job and colleagues, so I agreed to come and see if I could also continue my career at Tech."

Brad and Jamie say they have enjoyed the collegiality of the Tech faculty and staff, and, compared to bigger cities where they have lived, appreciate the lower cost of living, lack of traffic, and great parish and state parks for outdoors activities.

Jamie is continuing her work in the area of stem cell research and was recently offered an assistant professor position in Tech's School of Biological Sciences. Brad is teaching chemical engineering and mechanical engineering, and he recently received the 2013 F. Jay Taylor Undergraduate Teaching Award. He has also been voted Outstanding Faculty by the College of Engineering and Science students several years in a row. Brad says it is an honor to be recognized in that way.

"It's always encouraging to get positive feedback from the students and to know that your efforts are appreciated, so I am very thankful for the awards. I hope to continue to do my part to challenge our students and protect the value of their diplomas so that prospective employers will continue to look to Tech to hire well-prepared, qualified engineers."



## Grand Challenge Scholars Program

### Preparing Graduates to Solve Complex Problems: Newest Grand Challenge Scholars Receive Degrees

The Louisiana Tech University National Academy of Engineering Grand Challenge Scholars Program has announced the latest group of students to graduate from the program. The 2013 Grand Challenge Scholars graduates are **Kendall Belcher** - Civil Engineering, **Jake Eppehimer** - Mechanical Engineering, **Ryan Land** - Electrical Engineering, and **Nicole Roberts** - Mechanical Engineering.

Nationwide, only a dozen Grand Challenge Scholars Programs exist, including the one at Louisiana Tech. The program requires students to go beyond the regular curriculum by combining engineering and science courses with activities outside of the classroom that help them better understand the broader social, cultural and ethical implications of their technology through a variety of research and entrepreneurship experiences. This newest group of graduates not only excelled in the classroom but also shined in their activities away from school. Their experiences included interning for U.S. Senator Mary Landrieu in Washington, D.C., and establishing an Engineers Without Borders chapter at Louisiana Tech that is addressing critical water issues in a small village in the Philippines.

Following graduation, scholar Ryan Land will begin work at Texas Instruments in Dallas; Jake Eppehimer has been



accepted into Chrysler's prestigious CIE Intern Program where he will earn a Black Belt in Design for Six Sigma and earn a graduate degree from Purdue; Kendall Belcher will pursue a Ph.D. in structural engineering at Oklahoma State University and Nicole Roberts will work at BP in Houston.

The Grand Challenge Scholars Program was started in 2009 by the National Academy of Engineering in an effort to better prepare engineering graduates to solve the complex issues facing our world in the 21st century. The program also provides students with enhanced leadership and interpersonal skills.

The Louisiana Tech University program is led by Dr. Jenna Carpenter, Associate Dean of Administration and Strategic Initiatives for the College of Engineering and Science. Dr. Carpenter also serves on the national steering committee for the program.



*“Our Grand Challenge Scholars Program encourages students to engage in experiences that broaden their perspective and leadership skills. That comes across clearly when you look at both their accomplishments and where they are headed after graduation.”*

*- Dr. Jenna Carpenter*



**Kendall Belcher** - Civil Engineering, **Jake Eppheimer** - Mechanical Engineering, **Ryan Land** - Electrical Engineering, **Nicole Roberts** - Mechanical Engineering

# 2013 Shell Eco-marathon



# Developing Future Leaders through ExtraCurricular Activities

*“It was awesome - people cheering us on like a sports team. It really seemed like we meant something to the alumni, too.”*

- T. J. Spence,  
2013 Louisiana Tech Eco-marathon team member

The list of accomplishments of the Louisiana Tech Shell Eco-marathon team is extensive (first place wins in various categories every year since 2010 and a corporate sponsor in CenterPoint Energy in 2013). However, it is the positive impact the event has had on the students that is most impressive. T. J. Spence is a senior from Farmerville, who traveled to Houston for the Shell Eco-marathon competition for the first time in April of 2013.

T.J. said, “In high school I missed out on what it was like to be on a team, but I made tons of new friends on the Eco-marathon team. I’m really excited that I had the chance, and definitely want to keep doing it.”

The faculty advisors, meanwhile, see the competition as an opportunity for students to flex skills and abilities developed in the classroom by solving real and meaningful problems.

“What makes the Shell Eco-marathon experience a success for us,” says faculty advisor and Lecturer in Mechanical Engineering Michael Swanbom, “is the passing of skills and know-how from person to person. It’s faculty investing their time and effort into students, and students investing their time and effort into other students - which results in the development of future leaders.”

This year, the Tech team again took first place for mileage in the diesel competition of the Urban Concept category for their car ‘Hot Rod’, but they will also put their car in front of hundreds of thousands of people as part of a large marketing campaign for the Shell Eco-marathon Americas. The team and their car were chosen to be in one of the images that Shell will use to promote the event around the globe.

National Society of  
Black Engineers



Meanwhile, the College had another winning team this year. The Louisiana Tech Chapter of the National Society of Black Engineers (NSBE) was named the 2012-2013 National Distinguished Medium Chapter of the Year for exemplifying the NSBE mission statement. They also won the Region 5 Distinguished Medium Chapter of the Year and won third place for their Engineering Retention Program. In addition to the chapter awards, president Trevan Jenkins received the Most Outstanding President in Region 5 Award.

There are over 200 collegiate chapters of NSBE. The Louisiana Tech NSBE chapter is in Region 5, the Vanguard Region, which includes all the chapters in Texas, Louisiana, Arkansas, Oklahoma, Missouri, Kansas, Iowa, Nebraska, North Dakota and South Dakota. The NSBE mission is “to increase the number of culturally responsible black engineers who excel academically, succeed professionally and positively impact the community.”



Amara Uyanna, Kendall Belcher, Trevan Jenkins, Preston Johnson



## New Executive Associate Dean for Research Sees Promise in the Future

Q&A with Dr. Bala Ramachandran



During the summer of 2013, Dr. Bala Ramu Ramachandran, affectionately known as Dr. Ramu, will assume the position of Executive Associate Dean for Research for the College. Read on to learn more about his job and his passion for Louisiana Tech University.

**Q.** *What will you be doing as Executive Associate Dean for Research?*

**A.** I will continue to be responsible for facilitating interdisciplinary research collaborations, providing leadership for major research initiatives and mentoring new faculty to help them secure external research funding, but I will also have oversight responsibilities for all of the College's research centers as well as other College research activities. I will also be working to advance major research initiatives and supporting the research development of faculty.

**Q.** *Talk more about research and the role it plays at Louisiana Tech.*

**A.** About two-thirds of the annual research expenditures reported by the University are generated by researchers from the College of Engineering and Science. All of Louisiana Tech's centers of excellence focusing on scientific research are led by our faculty. The highly interdisciplinary and cutting-

**Dr. Bala "Ramu" Ramachandran**  
*Hazel Stewart Garner Professor in Chemistry*

*"My research interests are in the area of computational chemistry. In the past decade, my work has dealt with structure, energetics, and reactivity of small and large molecules. More recently, as part of the Louisiana Alliance for Simulation-Guided Materials Applications (LA-SiGMA), I am involved in the computational study of metal oxide clusters and surfaces, and electrode materials for lithium ion batteries.*

edge nature of our research has allowed Louisiana Tech to distinguish itself from other institutions of higher learning in North Louisiana and has contributed to our steady rise in national rankings.

**Q.** *What does the future look like for research?*

**A.** Research funding will become even more competitive as Congress tries to address the budget deficit and the national debt. However, our College is extremely well-positioned to compete in areas where research budgets are expected to remain healthy because of national priorities. These include cyber security, computational materials science, biomedical engineering, manufacturing, energy and defense-related research. Our collaborations with area medical schools and healthcare providers in the state have also opened new avenues of funding.

### Research Centers

*Center for Applied Physics Studies*

*Center for Biomedical Engineering  
and Rehabilitation Science*

*Center for Entrepreneurship and  
Information Technology*

*Center for Secure Cyberspace*

*Integrated STEM Education  
Research Center*

*Institute for Micromanufacturing*

*Trenchless Technology Center*



*Left: A prototype of the eVortex energy harvesting system  
Right: A FutureScan UWB Radar unit inspecting a buried pipe*

## Louisiana Tech's Trenchless Technology Center

*A Vital Partner in Business Solutions*

The Trenchless Technology Center (TTC) plays a vital role in helping area municipalities and businesses find solutions to complex underground problems. Over the past two decades, the TTC has become a leading research facility for the development of technologies influencing almost every aspect of trenchless construction methods and has served as a point of reference for representatives of the trenchless industry.

The core of the TTC is research. Director, Associate Professor of Civil Engineering, Dr. Erez Allouche, leads a dedicated research staff and post-doctoral and graduate students conducting \$1.5 million a year in research, ranging from installation of new piping to the inspection, assessment and rehabilitation of existing piping systems.

Key research programs have included the utilization of ultra-wideband signals to see through pipe walls, development and

testing of high-temperature cured-in-place-pipe (CIPP) resins, the use of polymer sprays for pressure and non-pressure pipe rehabilitation, and the use of geopolymer concretes. Dr. Robert McKim, Professor of Civil Engineering, leads the Center municipal forums which have played a key role in helping to educate engineers about trenchless construction methods.

The TTC annually organizes and sponsors one-day seminars in up to 15 North American cities where industry leaders present the latest technology directly to municipalities. The TTC, along with the host city, invites the appropriate industry leaders to give presentations on these topics in the morning sessions. In the afternoon sessions, an open discussion addresses specific local issues and generates networking opportunities for municipal engineers.



## Sandy Johnson

*Breaking the 'Glass Ceiling'  
In the Aerospace Field*

Sandy Johnson is a rarity in the world of aerospace engineering. First, she is female; second, she is not an engineer. Sandy graduated from Louisiana Tech with a degree in mathematics education. (She also holds an MBA from the University of Houston - Clear Lake [UHCL]). Sandy is the President and CEO of Barrios Technology, which she purchased in 1993, returning Barrios to its roots, that of a woman-owned small business. Barrios provides engineering and technology solutions to the aerospace industry and recently expanded into the oil and gas arena.

"I believe females have made a lot of progress in this country in the traditionally male field of engineering. There are still lots of meetings I attend, particularly at the CEO level, where there are very few, if any, women in the room, but the others in attendance no longer look at me like I don't belong!"

Sandy did not come to Barrios without engineering experience in the aerospace world, however. Prior to the formation of Barrios Technology in 1980, Sandy worked as an engineer with McDonnell Douglas Corp. She joined a group preparing a proposal for the National Aeronautics and Space Administration (NASA)/Johnson Space Center (JSC) Flight Design Support Services contract. The group, upon winning the contract, formed Barrios Technology. Under Sandy's leadership, Barrios has grown from 150 to over 550 employees, with revenue growth from \$10 million to more than \$87 million per year.

In addition to her corporate management responsibilities, Sandy is active in several Houston area community organizations. She is a strong supporter of the United Way of Greater Houston, serving on the Board of Directors, Executive Committee and chairing the Community Impact Committee.

"A big part of my job satisfaction comes from the ability it provides me to give back to others – our employees, our communities, and organizations like Louisiana Tech and UHCL, which played key roles in my success. I feel it is our duty to do what each of us can to make our world a better place, particularly for those less fortunate."

Sandy has received numerous awards and recognition for her achievements. In 1996, she received the Distinguished Alumnus award from UHCL, and in 2012, was presented the UHCL Presidential Medal for her outstanding contributions to the university and community. The Presidential Medal has only been awarded three times in UHCL's history. In 2008, she was named a Distinguished Alumnus from Louisiana Tech. Today, Sandy serves Tech as the President of the Engineering and Science Foundation Board of Directors.



Engineering and Science Foundation Board with the 2013 Louisiana Tech Eco-marathon Team

**The Louisiana Tech Engineering and Science Foundation was founded in 1958, and provides much needed funds in several areas, such as scholarships, endowed Professorships and Chairs.**

**2012-2013 Foundation Board Officers**

- Mike Pearson (CE69)-President
- Hilton Nicholson (EE80)-Past President
- Sandy Johnson (Math78)-Vice President
- Tim Petrus (EE76)-Secretary
- George Baldwin (PE78)-Treasurer
- Dr. Stan Napper (BmE80)-Dean COES
- Dr. David Hall-Faculty Representative

**John 'Pete' Ball (ChE61)**  
Principle & Co-Founder  
Xroads Solutions Group  
Dallas, TX

**Laurie Burt Jordan (BmE01)**  
Manager  
Smith & Nephew  
Memphis, TN

**Tim Moreau (ME78)**  
CEO - Prin. Owner  
EDG, Inc.  
Metairie, LA

**Steve Saucier (ChE75)**  
CEO  
Robbins, LLC  
Muscle Shoals, AL

**George Baldwin (PE78)**  
President  
Baldwin Madden Energy, LLC  
Shreveport, LA

**Sandy Johnson (Math78)**  
President/Owner  
Barrios Technology, Inc.  
Houston, TX

**Thomas Muse (ChE59)**  
President  
Muse Petroleum Corp.  
Dallas, TX

**Rick Shaw (ChE70)**  
Retired Exec. Vice President  
Celanese  
Dallas, TX

**Andrew Barringer (ME08)**  
Facilities Engineer  
Chevron  
Houston, TX

**Mike Kern (ChE71)**  
Retired Senior Vice President  
Huntsman Corporation  
The Woodlands, TX

**Hilton Nicholson (EE80)**  
President and CEO  
SCADA Cellular, LLC  
Mobile, AL

**Bill Slack (EE71)**  
President  
B&D Electrical  
Henderson, TX

**Jeff Brown (PE83)**  
Vice President  
Engineering and Operations  
J.W. Operating Company  
Dallas, TX

**Zeffrey Lucas (PE84)**  
Retired Former Director  
Woodgroup PSN  
Houston, TX

**Monty Offutt (EE82)**  
Associate Technical Fellow  
Boeing  
Huntsville, AL

**Elizabeth Taylor (IE01)**  
Manager  
NASA, Johnson Space Center  
Houston, TX

**Bill Chew (IE87)**  
Vice President Business Dev.  
ROI Insights  
Dallas, TX

**Michael McDaniel (ME07)**  
Piping Engineer  
Dow Chemical Company  
Houston, TX

**Mike Pearson (CE69)**  
President  
Orion Marine Group  
Houston, TX

**Allison C. Thibodeaux (ChE07)**  
R&D Chemist, PPG  
Lake Charles, LA

**Gary Hubbard (CE85)**  
Hubbard Investments, LLC  
Bossier City, LA

**Eddie McGough (IE83)**  
Senior Vice President  
Alcon  
Mansfield, TX

**Tim Petrus (EE76)**  
Executive Vice President  
Morning Star Partners  
Fort Worth, TX

**Ellen Turner (ChE95)**  
Principle Engineer  
Eastman Chemical  
Kingsport, TN

# 2012 Distinguished Alumni

Recognizing Excellence

The College of Engineering and Science annually recognizes individuals from each program or discipline of the College for their leadership and professional accomplishments.



**Jeffery Slade, B.S. Biomedical Engineering '81**  
Quality Director for Merck Consumer Care Global Products & Projects  
Chattanooga, TN



**Thomas Muse, B.S. Chemical Engineering '59**  
Chairman of Muse Petroleum  
Dallas, TX



**Sandra Swayze, B.S. Chemistry '82**  
Assistant Professor of Radiation Oncology, University of Kentucky,  
Department of Radiation Medicine  
Lexington, KY



**Sean Callan, B.S. Civil Engineering '97**  
Vice President of Advanced Geosolutions, Inc.  
Portola Hills, CA



**Debra Blackman, B.S. Computer Science '75**  
Senior Vice President and Chief Information Officer Progressive Bank  
Monroe, LA

(no photo available)

**Paul Reichley, B.S., Mathematics and Statistics '62**  
Retired Project Manager for CIT Jet Propulsion Lab,  
Palm Desert, CA



**A.C. Hollins Jr., B.S. Construction Engineering Technology '72**  
Director of Operations and Infrastructure for National Security Technologies  
Las Vegas, NV



**Ernest Green, B.S. Electrical Engineering Technology '81**  
Site Manager for Angus Chemical Company  
Sterlington, LA



**William Slack, B.S. Electrical Engineering '71**  
President of B&D Electrical Contractors, Inc.  
Henderson, TX



**William K. Sales Jr., B.S. Industrial Engineering '79**  
Senior Vice President of Operations for Reliance Steel and Aluminum Company  
Coto de Caza, CA



**John Coast, B.S. Mechanical Engineering '64**  
Owner and Founder, Coast Machinery, LLC  
Baton Rouge, LA



**Les Sisemore, B.S. Physics '67**  
Retired President for VGO Enterprises, LLC  
Ruston, LA

(no photo available)

**Robert Mack Caruthers, B.S. Petroleum Engineering, '61** Retired Professor and Department Head, Louisiana Tech  
Department of Petroleum Engineering  
Brentwood, TN



## Matt Saurage

### *Engineering Success through Family Enterprise*

Matt Saurage, Chairman of the Board of Directors of Community Coffee Company, began his education thinking he would become a pilot and aeronautical engineer. So, he left Baton Rouge for Ruston and Louisiana Tech to begin his engineering studies. Though Matt's interest in aviation changed, he earned a B.S. degree in mechanical engineering from Louisiana Tech. Matt fell in love with the city of Ruston and says that it still holds fond memories for him.

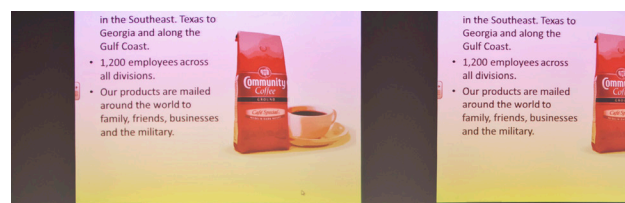
“Moving to Ruston to attend school and remain each summer to work locally was a wonderful life experience. This [Ruston] is a diverse community, and is filled with good people who embrace the University and its students' interests.”

After receiving his undergraduate degree from Tech, he secured an MBA from Vanderbilt University in Nashville, Tennessee. Matt's advice to students today is to “make learning a lifestyle and continue to learn throughout your career. Knowledge is the greatest gift you can give to yourself so that you remain engaged, in touch and relevant to the world around you.”

Matt has been involved with Community Coffee Company since 1995 and has been Chairman of the Board since June 2012. The Saurage family of Louisiana has owned and operated Community Coffee Company since founder Henry Norman “Cap” Saurage began selling coffee out of his country store in 1919. Today, the Baton Rouge based company is the largest family owned and operated retail coffee brand in America.

Matt has worked in several areas of the company, including the coffee roasting facility, brand marketing, the CC's Community Coffee House division and new product development. Prior to becoming Chairman of the Board, he served as President and Chief Executive Officer. Matt, his brother, Hank, and his father, Norman, regularly cup test coffees for roasting to assure they meet Community's standards for quality and flavor. Matt has also lived in Brazil to better understand the nuances of growing, selecting and trading coffee.

Matt and his wife, Catherine, who met at Tech, have five children. He volunteers on various boards of non-profit organizations for education and the arts. He also helps guide Community Coffee Company's philanthropic activities, including its 24-year-old Community Cash for Schools® program, which benefited over 800 schools in its market areas last year.



## Building Campaign Progress Report

*Help Continue the Legacy of Producing Champions  
Both on and off the Field...*



As a Louisiana Tech University petroleum engineering graduate and a former Bulldog football player, I marvel at how much the College of Engineering and Science continues to achieve in the face of economic uncertainty, budget constraints and limited facility capacity. The school's engineering and science program remains highly recognized nationally, and employers continue to express

their pleasure, just as they did during Dean Frank Bogard's tenure in the early 1900s, at hiring Louisiana Tech engineering and science graduates. Today, the dedicated professors, staff and administrators carry on that legacy in educational excellence, but have taken undergraduate engineering education to a new level. They have implemented innovative instructional programs with a focus on integration across program disciplines and collaboration with other University colleges. Many of these creative solutions serve as models for other engineering and science schools across the nation. This new integrated approach to learning, however, has increased the strain on capacity of 1940s era Bogard Hall, and professors have taken on a new goal—that of embarking on the monumental task of raising private funding to help build a new Integrated Engineering and Science Building.

As engineering and science students, we are introduced to many technical concepts and subjects. Along with this training, we are also taught to develop our sense of imagination so that we dare to dream the impossible instead of simply focusing on the obvious day-to-day hurdles. A new Integrated Engineering and Science Building will provide a vehicle to continue to foster this underlying theme and aid in attracting the best and brightest high school students who want to pursue engineering and science studies on a smaller campus with new, modern facilities and strong industry relationships.

As one of the 14,000 plus alums from Louisiana Tech's College of Engineering and Science, I believe this program has won many championships over the years, and I believe this new building will help continue the legacy of producing champions. I hope all alumni will support this dream that will generate positive returns for the College for years to come.

*- Gerald McDaniel, class of 1986*



*We're so close... Would you help?  
Visit [www.coes.latech.edu/building](http://www.coes.latech.edu/building).*

## Recognizing our Alumni and Friends for their Generous Support

### \$1,000,000 +

Estate of O. W. Hogan Jr.  
Estate of Lois Thomasson Horne

### \$100,000 - \$999,999

Eastman Chemical Company  
Hunt, Guillot & Associates, LLC  
Danny J. Rea  
Charles G. Tullis

### \$10,000 - \$99,999

George and Jean Baldwin  
Justin M. Bounds  
Cameron  
CenterPoint Energy  
CITGO  
Charles G. Coyle  
John and Barbara Dailey  
Roger and Joan Danzy  
Joshua Gidlow  
Ron Harrell  
Richard C. Harrelson  
Sandy G. Johnson  
Zeffrey and Mindy Lucas  
Edward D. McGough  
Orion Marine Group, Inc.  
L. Ed Orr  
Mike and Candy Pearson  
Clark and Gayle Red  
Deborah W. Richter  
Bill and Nancy Slack  
Edward E. Stevenson  
Chad J. Williams  
Hedy L. Wilson  
Chip and Carolyn Woodard  
James A. Wyatt

### \$5,000 - \$9,999

Angus Chemical Company  
William C. Bailey Jr.  
William E. Bradley III  
Chesapeake Energy  
Crescent Systems Inc.  
Bruce and Cathie deLeon  
Dow Chemical Company  
Bob and Lora Lee Duncan  
EDG, Incorporated Consulting Engineers  
Entergy Corporation  
Greater New Orleans Foundation  
Elbie M. Hall  
Larry L. Hock

A. C. and Evelyn Hollins  
Jerry L. Hudson  
Michael J. Kern  
Phillip W. Lear  
T. Ed Maxwell  
Don and Ann Metz  
PPG Industries Foundation  
Pratt Paper (LA), LLC  
The Riley Company of Louisiana  
Margaret S. Robinson  
Charles and Nelwyn Spruell  
M. Lea Williams II  
Gina L. Wilson, M.D.  
L. C. Worley III

### \$1,000 - \$4,999

James and Jeanne Adams  
Bobby and Dorothy Aillet  
Nicholas K. Akins  
James R. Albritton  
American Electric Power  
Anadarko Petroleum Corporation  
Chad and Nancy Archer  
Lindsey J. "Red" Aucoin  
John and Lois Baker  
John G. "Pete" Ball Jr.  
Robert W. Barnwell  
Eric and Cynthia Bridges  
William R. Brown IV  
Michael L. Burrow  
Sean G. Callan  
Guoming Chen and Si-Hong Chu  
William H. Chew  
Laurey L. Conway  
Mel and Debbie Corley  
John E. Couvillon  
Kenny and Shirley Crump  
Dean J. Daniels  
Tom and Ama DuBell  
James and Eileen Evans  
Stephen and Megan Fezell  
Don and Nancy Garland  
William J. Gates  
Stanley M. Gorman  
Ernest L. Green  
John and Cynthia Griffin  
Donald and Martha Guenther  
Kyle and Ginger Guice  
James B. Hall II  
Allan B. Hauser  
Haynes International, Inc.

Thomas M. Hazelwood  
Justin and Jeanette Hinckley  
B. J. and Bettie Hollingsworth  
Phil and Virginia Israel  
Paul A. Jackson III  
Dela Jakub-Wood  
Billy and Shai James  
Estate of James Daniel Jones  
James H. Kelly  
Jim and Carolyn Kilpatrick  
A. Lane Larance  
Elizabeth Lawson Burton  
Melissa W. Mangum  
G. Russell Marsh  
Devin and Sarah McBride  
Mac and Vicky McBride  
Billy and Millicent McConnell  
Matthew T. McCoy  
Mike and Kaitlyn McDaniel  
Robert E. McFadden  
Jeananne C. Migala  
Paul D. Miller Jr.  
John and Linda Morris  
William G. Morrison  
Andrew L. Mouhot Jr.  
National Security Technologies, LLC  
Bill and Linda Nelson  
Hilton M. Nicholson  
Virgil and Myrtis Orr  
Brent and Daina Parker  
Phillip and Melanie Parker  
Cody A. Parsley  
Sam and Pat Paschal  
Pipes Foundation, Incorporated  
PPG Industries Foundation  
Praeses, LLC.  
Hanlin Qin  
David and Emily Rentrop  
John and Mary Jean Roddey  
Wayne F. Roth  
Dan A. Russell  
Steven D. Saucier  
Rick N. Shaw  
Roger G. Smith  
P. K. and Margaret Smith  
Kenny and Sheri Smith  
Valessa J. Spratley  
Greg and Brandy Stone  
David and Hope Taylor  
Scott M. Theroux  
Sally E. Thigpen



## DONORS AND GIFTS

Terry L. Traylor  
Bob and Sherryl Tucker  
Herschel and Dot Vinyard  
Dan and Sue Walsh  
Al and Sue Watts  
Ralph M. Webb  
Terral and Nita Whetstone  
John Morgan Wilson  
Jim and Charlyne Wyche  
C. S. Yang

### **\$500 - \$999**

Patricia A. Barnwell, M.D.  
Andrew J. Barringer  
Monica Bastola  
Joe and Kimberly Batson  
Jeffrey N. Beasley  
Jeff and Susan Bertsch  
Greg and Cindy Bimle  
Mike and Ann Bounds  
Billy R. Boyett  
David and Lee Bufkin  
Nathan A. Burkhalter  
Scott K. Canterbury  
William R. Causey  
Shiping Chen  
Jerry D. Crooks Jr.  
Aaron M. Dressel  
John W. Edwards  
Ron and Sue Edwards  
Chris and Heather Ewing  
Randall and Cindy Ferrell  
Rick and Alicia Fontenet  
Walter G. Fornea Sr.  
James E. Franklin  
Larry A. Golson  
Mike and Patricia Hogan  
Joe G. Holyfield  
Eric and Amy Johnson  
Jennifer Khouri  
Joseph L. Knight  
Paul and Katy LeMaire  
James and Lyda Madden  
Jonathan and Susan Morris  
Terry and Kathy Orr  
Rajesh A. Pagadala  
John V. Rivers  
Brian and Karen Robey  
Charles and Rosemary Robinson  
Larry and Marjorie Solley  
William E. Spielvogel  
Larry and Kay Stephens  
Jon and Ree Stephenson

James R. Stewart Jr.  
Glen D. Suhren  
Jim and Gloria Summerlin  
Switzer Medical, Inc.  
Allison C. Thibodeaux  
Henry and Kathleen Thorpe  
Charles and Monnie Vanderslice  
Sharmon S. Votteler  
William and Lowitta Watkins  
Roger and Patricia White  
John A. White, Ph.D.  
Joseph C. Wiley

### **\$100 - \$499**

Adekunle Adeleye  
Albemarle Corporation  
Dick and Trish Albritton  
Jack and Carolyn Albritton  
Jim and Martha Allen  
Jim and Virginia Anderson  
William L. Anthony  
John W. Arnold  
Richard C. Baker  
Roy and Ruth Baker  
Adam and Natalie Barham  
David and Lori Barnett  
Louis and Anne Marie Barrios  
Timothy C. Barron  
Bob and Marcia Basinger  
Donald R. Bates  
Lisa Bauman  
Kendall K. Belcher  
John and Louise Belson  
Darryl B. Bennett  
Terry D. Bennett  
Dudley and Mary Bertrand  
Gwen Biernacki  
Edward B. Birkelo  
Steve and Suzy Blackwelder  
Billy R. Blanchard  
William B. Boggs Jr.  
Ross E. Bozeman  
BP America Inc.  
John Braswell  
Marvin E. Brossette  
Don and Sherry Brown  
Jeremy V. Bryant  
Emory T. Buch  
Edwin B. Burns  
Gene and Barbara Callens  
Jim and Joni Cannatella  
Howard F. Carlton Jr.  
Douglas E. Carnahan Jr.

Daniel A. Carr  
Dan and Lauri Carter  
William P. Cassels Jr.  
William S. Chaffin  
Richard J. Chang  
Corey B. Cheeks  
Adam J. Chenevert  
Chang and Sue Choi  
Gregor G. Cleveland  
Daniel O. Coleman  
Jacob and Kayla Coots  
Merrill A. Cornish  
Ramona G. Coulthurst  
James W. Cronk  
Debi Daigle  
Paul O. Davey  
John W. Davis  
Travis and Kitty DeFreese  
Fred G. DeLaCerde  
Grover L. Dobbins  
R. Terry Dodson  
Hongwei Du  
Chris and Janet Dupre  
Richard I. Durrett  
Gordon and Julia Dutile  
John and Diana Eberhard  
W. Cody Eckhardt  
John and Sherry Edmonds  
Gary V. Edwards  
Barney R. Eiland  
Thomas E. Emmel  
Joe and Orel Lene English  
Arnel B. Enriquez  
A. William Eustes III  
James D. Evanoff  
Tony E. Evans  
Jerry Fekete  
Zongwen Feng and Singui Tang  
David R. Fisher  
Betty Sue Ford  
Carrie K. Foster  
Jeff and Lynn Franklin  
Catherine E. Fraser  
Robert W. Freese  
Shirley B. French  
Robert and Sharon Garner  
Tommy W. Gaulden  
James E. Gerhardt  
Chris and Kelli German  
Jim and Charlotte Goodwin  
J. Sam Griffith Jr.  
Nickie and Susan Grissom

## DONORS AND GIFTS

Dennis L. Grote  
Les and Kathy Guice  
Richard G. Guttenberg  
Ben and Ellen Haley  
Casey Hall  
David and Laura Hall  
Paula Claire Hall  
Todd D. Hanby  
Ruth Ellen Hanna  
Barton W. Harris  
Brian J. Harrison  
Wayne B. Hawkins  
Dallas E. Haynes Jr.  
Jianguo He  
Lynda Reddout Heller  
Donald R. Henderson  
Nancy A. Henry  
William C. Hilderbrand  
Kenneth and Pat Hill  
Juanita Hill  
Josh and Lisa Hindmon  
William B. Hornsby  
Donald R. Hudson Jr.  
Robert C. Hughes  
Rachel A. Hulett  
James Holloway & Company, LLC  
Jim and Doy Jenkins  
James S. Jenkins  
Sydney C. Johns  
Jeffrey L. Johnson  
Kirk G. Jordan  
David and Kristi Kantor  
Ahmad R. Kareh  
Karthik H. Katingari  
Billy and LeVerne Kidd  
Frederick M. King  
Kathryn S. Kissam  
George H. Kratzer  
Larry W. LaBorde  
R. Alton Lacey  
Jason A. Lagrone  
Georgia Lampton  
Kenneth J. Lannes  
William M. Law  
Harold L. Lee  
Allen and Sue Lee  
George W. Levert Jr.  
Kurt M. Ley  
J. David Lindsay  
John A. Lintott Jr.  
Charles and Ann Lott  
David L. Lotz  
Janine S. Lotz

Elaine J. Lucas  
Julie T. Maddox  
Harry T. Mann  
Stan and Lindsey Martin  
Jim and Carol McCarty  
Jason R. McClure  
Jerry and Jamie McCullough  
Gerald and Dawn McDaniel  
A. B. and Ramona McDonald  
Gerald and Irene McLendon  
Stephen M. McMullan  
Anu C. Mehrotra  
Chia-Chi Mei  
Oliver D. Meredith  
Fred W. Mitchell  
Jason and Naomi Mock  
Mohr and Associates, Inc.  
Marvin Moncla  
Billy and Janet Moore  
James N. Moore Sr.  
Steven O. Moore  
J. Derald Morgan  
Bobby D. Mustin  
Fred A. Neal  
Reba K. Neel, Ph.D.  
Hien T. Nguyen  
Fred M. Odom III  
Raymond L. Odom  
Steve and Suzanne Offutt  
D. Lamar Oliver III  
William H. Page  
Panola Company, Ltd.  
Curtis and Marciel Patterson  
Bruce W. Patton  
Kevin J. Peters  
Plains Exploration & Production Co.  
Fred H. Plitt  
Russell J. Ponder, PE.  
Ronnie and Barbara Poole  
Norm and Anita Pumphrey  
John and Luanne Pusateri  
John David and Kelly Rainey  
Ankur K. Rajopadhye  
James B. Randall, PE.  
Fulton T. Ray Jr.  
Bob and Donna Reese  
Richard N. Reggio Jr.  
Melanie O. Rice  
Gretchen A. Ridge  
Dustin and Sarah Ritter  
Edward H. Roberts Jr.  
Paul F. Robinson  
Steven Robinson & Dianne G. Robinson

George E. Rogers  
Bill and Nobie Ross  
August J. Ryberg Jr.  
C. D. and Beverly Sabathier  
William K. Sales Jr.  
Gerald L. Sautter  
Patrick and Annette Seamands  
Ben and Ginger Sellers  
Larry and Bonnie Sellers  
Curtis R. Sewell  
Danny G. Shaw  
Charles and Charlotte Shelor  
Michelle M. Sibille  
Christopher B. Simmons  
J. William Skeeles  
Mike and Jodi Slempp  
R. Lynwood Smelser Jr., PE.  
Michael and Paula Smith  
Dorothy W. Smith  
Jimmy M. Smith  
Laura P. Smith  
Charles J. Smollen, PE.  
James E. Sparkman  
John and Yvette Sprague  
Roy A. St. Paul, PE.  
Marion and Elizabeth Stevens  
Max and Lillian Stracener  
Earl and Sunshine Sturgeon  
Jerry and Myra Sutton  
Alan C. Svoboda  
Don and Sabrina Tally  
Liqiang Tang  
Ross and Elizabeth Taylor  
Michael and Kimberly Theunissen  
Shelly B. Thigpen  
Robin C. Thomas  
Harold D. Thomas  
Mack A. Thomas  
John R. Thompson  
Donald L. Tolar  
Hilary C. Touns  
Gregory T. Tucker  
Keith and Julie Tynes  
Hines S. Vaughan  
Martha A. Vining  
William and Linda Viox  
H. David Waldroup  
Edmond F. Wall Jr.  
John C. Watson  
Phil and Aileen Watson  
Scott and Mary Lynn Watson  
Timothy D. Weaver  
Hollis W. White

## DONORS AND GIFTS

William D. Whittekin  
Billy and Cathy Wilkerson  
Garland S. Williamson  
Robert W. Willis  
Dave and Dot Wilson  
John and Mary Kay Wood  
Cameron H. G. Wright, Ph.D., P.E.  
Robert D. Wyatt Sr.  
Zhong-Ji Yang  
Yuming Yang  
Ernest and Andrea Young  
Qun Yu  
Glen J. Zevenbergen

### **\$50 - \$99**

Brad and Roxanna Arcement  
James R. Barnes  
Tommy and Kathy Barr  
Kenneth A. Benson  
John D. Blalock  
Jerry and Dinah Brazzel  
George C. Briley  
Scott and Glenda Burns  
Johnny G. Cailleteau  
Lance J. Campo  
Jake Carpenter  
Carroll Insulation & Window Co., Inc.  
Sandra T. Cavataio  
J. D. and Eldora Chachere  
Bridget A. Clark  
Marty and Debbie Conner  
William B. Corley  
Robert and Margaret Daulton  
Dane and Jessie DePriest  
David H. Dickas  
Jeremy W. Dickson  
George T. Dore Jr.  
J. Bret Dronet  
Mitchell Evanoff  
Jack Evans  
Kenneth W. Farmer  
Kenny and Stacey Fletcher  
Edward T. Fowlkes  
Ann M. Fraser  
John and Susan Freasier  
Doug and Jenni Gibbons  
Cheryl J. Goodwin  
Sam and Sara Goodwin  
Fred and Marilynne Gorman  
David and Kelly Gwarjanski  
Cherry K. Harper  
Ben and Diana Humphries

Jerry and Joyce Hunter  
Barbara S. Johnson  
William and Maureen Johnson  
Thomas W. Johnston  
Gary and Marilyn Joiner  
Charles E. Jones  
Gene and Joan Jones  
Nancy J. Keim  
Shelby V. Laurents  
Lantonio Lee  
Ben and Mona Louviere  
Conrad and Dawn McGarry  
Fred F. Meadows Jr.  
Jorge A. Montesdeoca  
Robert A. Moon Jr.  
Eddie and Mary Lynn Mrok  
Jere B. Nash III  
James R. Paxton  
Hugh R. Pearson  
Jeff J. Peshoff  
Tim and Elaine Petrus  
James W. Pipes  
Dipendra K. Piya  
Howard J. Rattliff Jr.  
Terry F. Reymond  
Dustin and Sarah Ritter  
Tom and Joanie Roberts  
Henry and Georgia Rogers  
Brian J. Schiro, M.D.  
George W. Sentell Jr.  
Clarence and Marsha Shaddock  
Singaravelu Sivanandan  
Elizabeth Skoler and Mark Becker  
Kenneth L. Small  
Clarence O. Sneed  
Edward J. Sumner  
James A. Taylor  
Michael W. Taylor  
Mary J. Turain  
Neil L. Wagoner  
John P. Watson  
W. Phil Whitehouse  
Edmond B. Williams  
Jeff and Trisha Young

*"It was my obligation as a recent graduate of Tech to give back as soon as possible, and I hope others follow, too, because if someone has helped you greatly, you must return the favor and help them back."*

*- Kendall Belcher '12*

### **Matching Gift Companies**

Abbott Labs Employee Giving Campaign  
Albemarle Corporation  
American Electric Power  
Anadarko Petroleum Corporation  
BP Foundation, Inc.  
Caterpillar, Inc.  
Chevron  
Conoco, Inc.  
Dow Chemical Company Foundation  
Eaton Corporation  
Entergy  
ExxonMobil Foundation  
GE Foundation  
Grace Foundation, Inc.  
Ingersoll-Rand Charitable Foundation  
Johnson & Johnson  
Microsoft Giving Campaign  
Mobil Foundation, Inc.  
Pfizer Foundation  
Plains Exploration and Production Co.  
PPG Industries Foundation  
Shell Oil Company Foundation  
Southwest Gas Corporation Foundation  
Square D Foundation  
Texas Instruments Foundation  
The Clorox Company Foundation  
Tidewater, Inc.

# Working Together to Create Successful Partnerships

The College of Engineering and Science and the Dow Chemical Company have been working together for decades. Over the years, Dow has hired over 100 of our engineering and science students to work in their offices, refineries and subsidiary companies around the globe.

This past fall, Dow underwrote the cost of the College's homecoming tailgate, providing soft drinks and tee shirts for students and alumni. In the spring, the company's Angus Chemical plant in Sterlington, sponsored the annual Spring Release Crawfish Boil.

More and more area companies are partnering with the College on everything from support for student activities to sponsorship of the annual Senior Design Projects Conference. In 2013, 15 companies and seven municipalities asked our seniors to assist them in solving problems or in making improvements in overall operations.

The following quote from Rick LeBrun, General Manager of SGS in West Monroe, was typical of comments we received.

*"Thanks again for your help and to Louisiana Tech for affording us the opportunity to work together on this project. This was a 'True Success Story' for collaboration with a local university and the working public that ultimately preserves jobs for our local community."*

If you would like to become a corporate sponsor of College events or an Industrial Partner, contact Catherine Fraser in the College's development office at [cfraser@latech.edu](mailto:cfraser@latech.edu).



## Industrial Partners



National Security Technologies LLC  
Water - Service - Partnership



## Associates



**EASTMAN**





**LOUISIANA TECH UNIVERSITY**  
**COLLEGE OF ENGINEERING AND SCIENCE**  
P.O. BOX 10348  
RUSTON, LA  
71272

Non-Profit Org  
US Postage  
PAID  
Shreveport LA  
Permit No 82



[www.coes.latech.edu](http://www.coes.latech.edu)

***FOLLOW OUR LEAD***

