

University of Business and Technology in Kosovo
UBT Knowledge Center

Theses and Dissertations

Student Work

Winter 1-2011

DESIGN AND CONSTRUCTION OF AN INFORMATION AND SOUVENIR CORNER

Adea Gashi

University for Business and Technology - UBT

Follow this and additional works at: <https://knowledgecenter.ubt-uni.net/etd>



Part of the [Architecture Commons](#)

Recommended Citation

Gashi, Adea, "DESIGN AND CONSTRUCTION OF AN INFORMATION AND SOUVENIR CORNER" (2011).
Theses and Dissertations. 960.

<https://knowledgecenter.ubt-uni.net/etd/960>

This Thesis is brought to you for free and open access by the Student Work at UBT Knowledge Center. It has been accepted for inclusion in Theses and Dissertations by an authorized administrator of UBT Knowledge Center. For more information, please contact knowledge.center@ubt-uni.net.



University for Business and Technology
School of Architecture and Spatial Planning

Bachelor Thesis
Academic Year 2007-2010

Student: Adea Gashi

DESIGN AND CONSTRUCTION OF AN INFORMATION AND
SOUVENIR CORNER

Supervisor: Cand. Dr. Lulzim Beqiri

June/2011
Prishtinë

This thesis is submitted in partial fulfillment of the requirements for a
Bachelor Degree

ABSTRACT

The following paper describes the design assignment that I chose to do for my Bachelor Thesis.

My task was to design and construct an Information and Souvenir Corner located in the International Airport of Prishtina. The central topic of this paper is analysing this specific object, addressing the idea and reasons behind this construction, as well as, the built form and basic materials used and how they comply with the standards of sustainable architecture.

TABLE OF CONTENTS:

1 INTRODUCTION.....4

2 LOCATION.....4

3 ARCHITECTURE.....5

3.1 EXTERIOR.....5

3.2 INTERIOR.....6

4 CONSTRUCTION AND MATERIALS.....8

5 CONCLUSION.....15

1 INTRODUCTION

During this assignment I studied the urban structure of Kosovo in particular the urban structure of Prishtina, in an attempt to identify the objects that we are missing in this urban morphology. I found out that the region can make a good use of a lot of new buildings of different functions, although, the problem of information stroke me as quite appropriate for the Bachelor Thesis.

The absence of a specific place where people can get information about Kosovo and buy souvenirs frequently leads to confusion among the people especially the tourists.

I decided to address this issue in a way of designing an object that would meet with this problem. The structure is located in the International Airport of Prishtina, thus being easily accessible to all the people going in and out of the country. The building has reception desks, open to people asking for information, a screen projector were they can watch history movies and documentaries, and a souvenir and postcard compartment.

It has a clear and unique design that will catch the eye of the people passing by.

2 LOCATION

The object for Information and Souvenirs is located in the site of the International Airport of Prishtina “Adem Jashari”, infront of the compartments of the arrivals and departures.

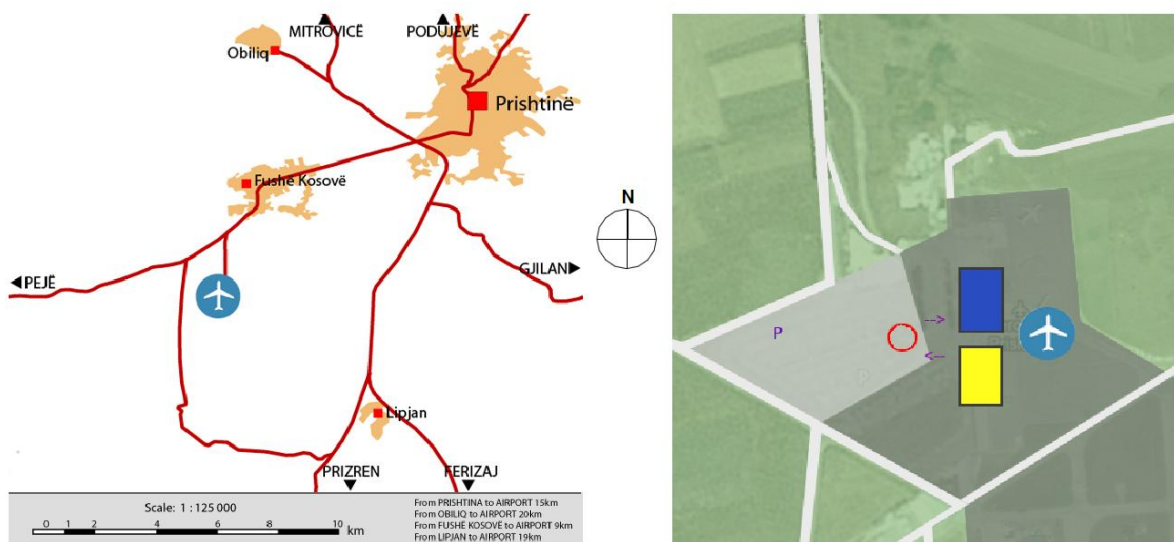


Fig. 1: Location of the object

The building is of modest size so it does not present an obstacle for the functioning of the Airport.

It has two entrances, for easier accessibility for the people coming in and going out of the country.

3 ARCHITECTURE

The French theoretician of the XVIII century, Quatremère de Quincy described architecture as mode of expression parallel with speaking. Both these elements evolve, serving the progressing society and its needs.

This building corresponds to the Contemporary Architecture, with emphasis to the Poetic Architecture. With a disciplined application of form and material a state of emotional balance is perceived by the observer.

3.1 EXTERIOR

The exterior of the building merges in the surrounding with its concrete facade, the aggressive colour of the door handle in the shape of the information symbol is purposely made to draw the attention. Hanging plants are part of the construction putting an accent to the importance of implementing green areas everywhere.



Fig. 2: Exterior render (south - east view)



Fig. 3: Exterior render (east - north view)

3.2 INTERIOR

The atmosphere from the exterior follows in the interior, but with slightly warmer tones. The domination of concrete is interrupted by three colours blue, yellow and red, emphasizing in our identity and history.

From the two entrances you can approach corresponding reception desks, on the right side of the entrance doors. The interior arrangement is done on that way so you have to circulate along the space in order to get to the other side of the building (thus, the customer would be exposed to certain goods and the situation may result to be profitable).

The reception desks divide the building to two compartments. One for selling of souvenirs, books and postcards that is more exposed to natural light. The other compartment has a screen projector where native movies and documentaries are played all the time. Here are also placed three kiosks where one can have access to electronic maps. This compartment gains natural light from above to correspond to the conditions required by the above stated equipments.



Fig. 4: Interior render



Fig. 5: Interior render

4 CONSTRUCTION AND MATERIALS

The construction and materials used in this building are made to fit the sustainable building standards.

The structure consists of a cellar and ground floor. In the cellar are located the staff toilets and the storage unit while the ground floor is addressed for the costumers.

The walls have a sandwich construction with 15cm of heating insulation between layers of reinforced concrete 15cm and 20cm. There are no columns used in this construction. The weight of the object lays in these massive walls and beams. The building has a flat roof comprising of 16cm reinforced concrete slab, slant concrete with 2% slope, four layers of vapour proof barrier, 20cm of heating insulation, a non-porous membrane and 5cm of reinforced concrete topping. Floor slabs are composed of 16cm reinforced concrete slab, a non-porous membrane, 3cm of slant concrete, 3cm of sound insulation board, foil, 6cm concrete screed topping with underfloor heating pipes, a layer of foil again and a concrete finish. Striped foundations lye in gravel. Two lines of drainage are provided for this building, one for the ground floor foundation, the other for the cellar foundation, a joining pipe collects the water from these two systems and sends this water to the main canalisation system. The drainage pipes lye in a concrete layer encircled by gravel. The gravel is separated from the earth around with a layer of geotextile.

Below are the drawing plans of this object along with the details of this construction.

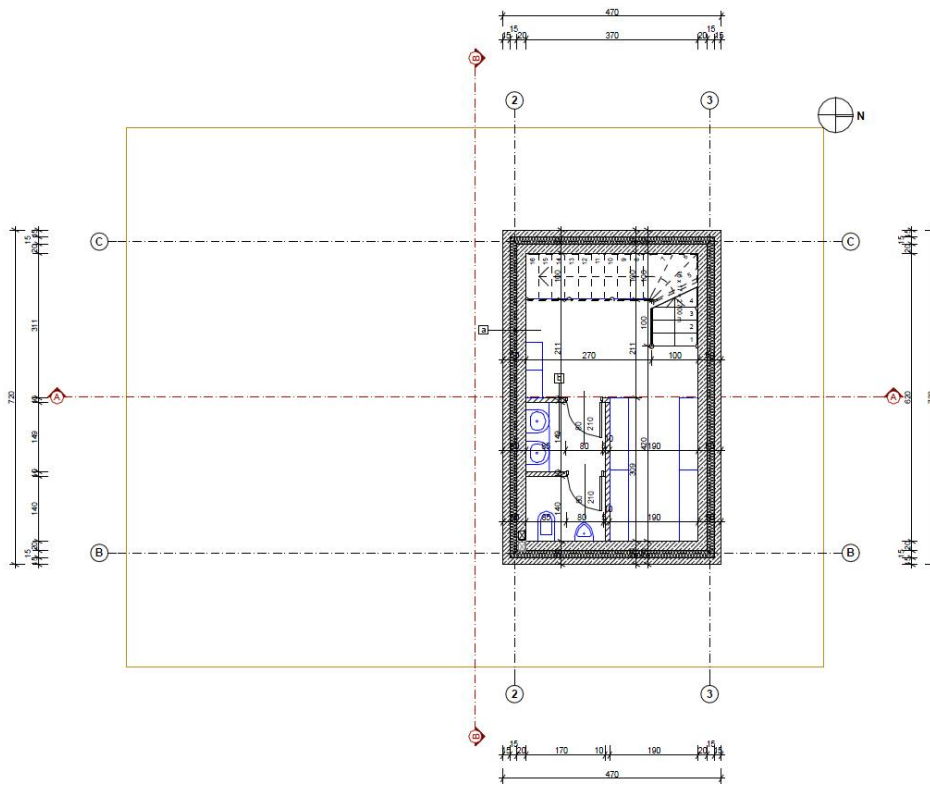


Fig. 6: Floor Plan - Cellar

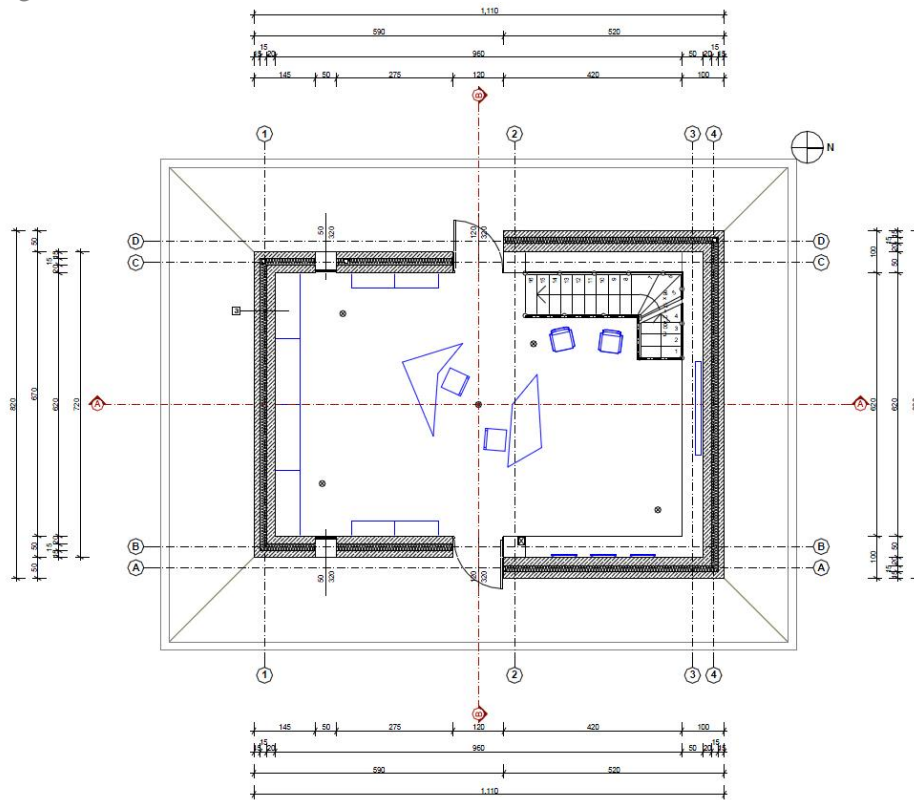


Fig. 7: Floor Plan – Ground Floor

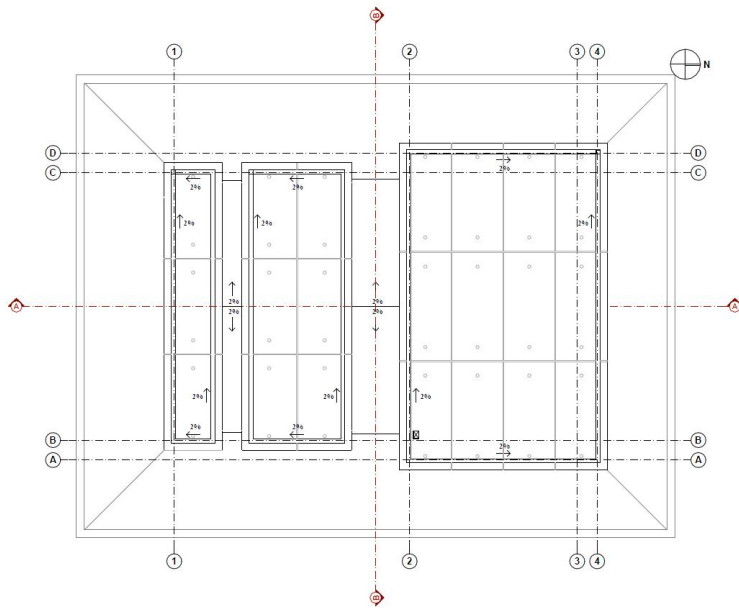


Fig. 8: Roof Elevation

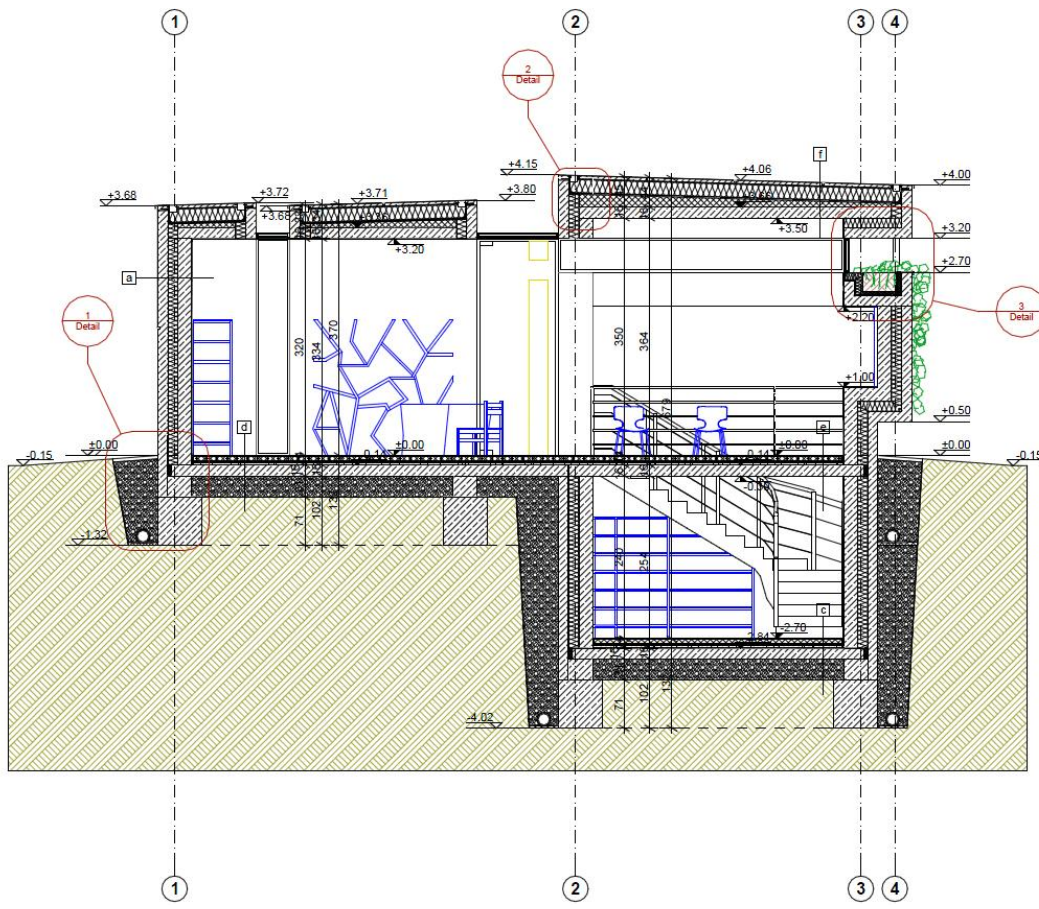


Fig. 9: Section A-A

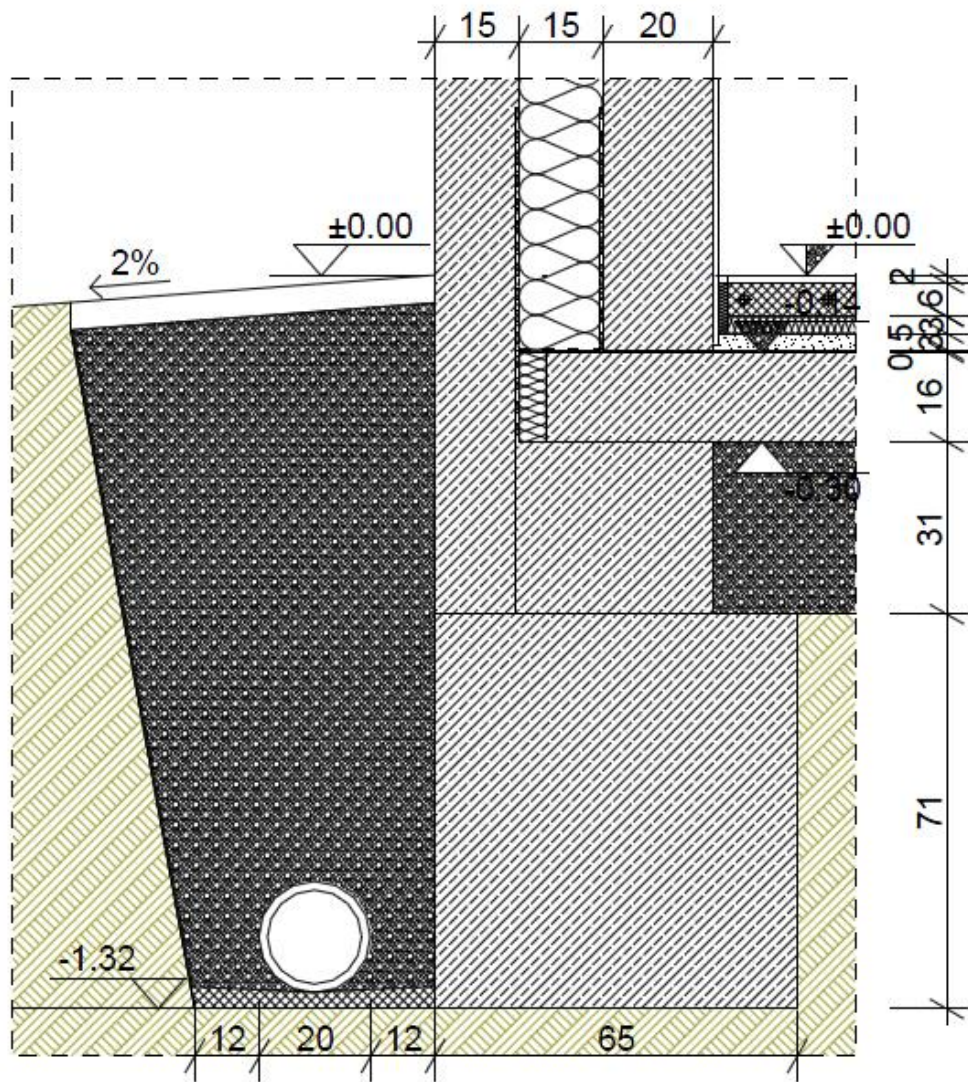


Fig. 10: Detail 1

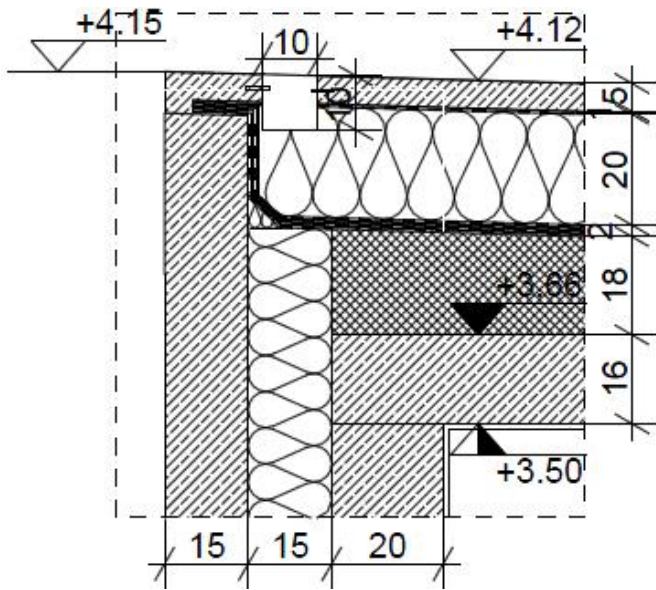


Fig. 11: Detail 2

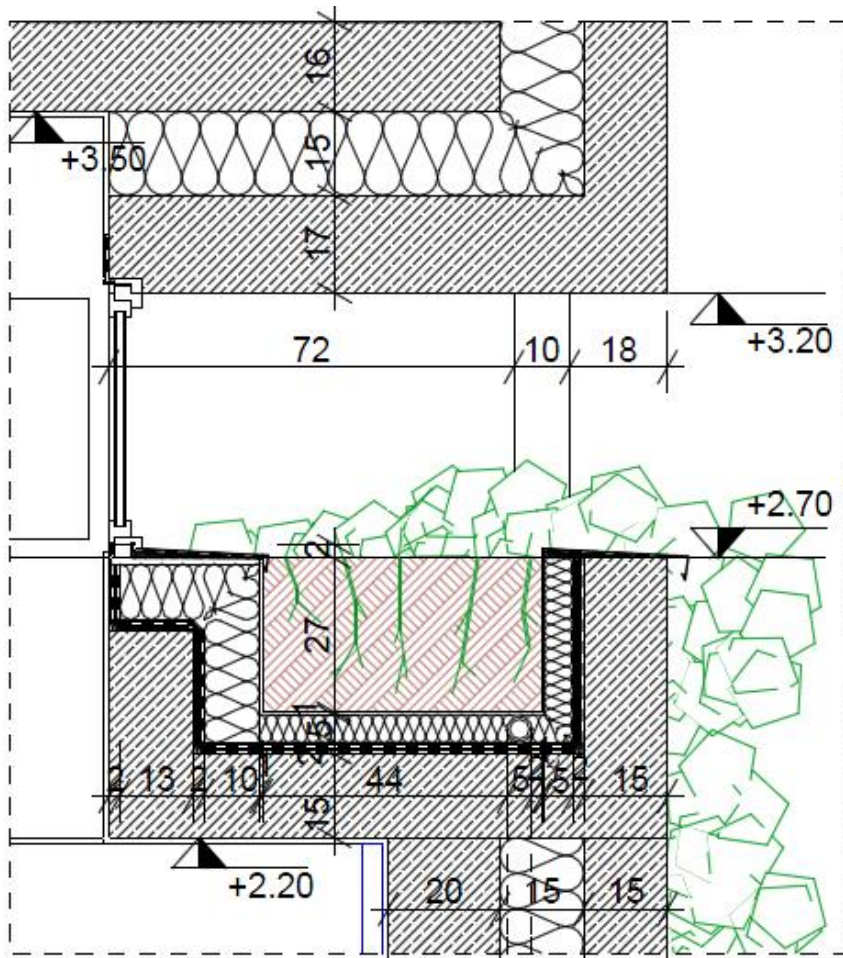


Fig. 12: Detail 3

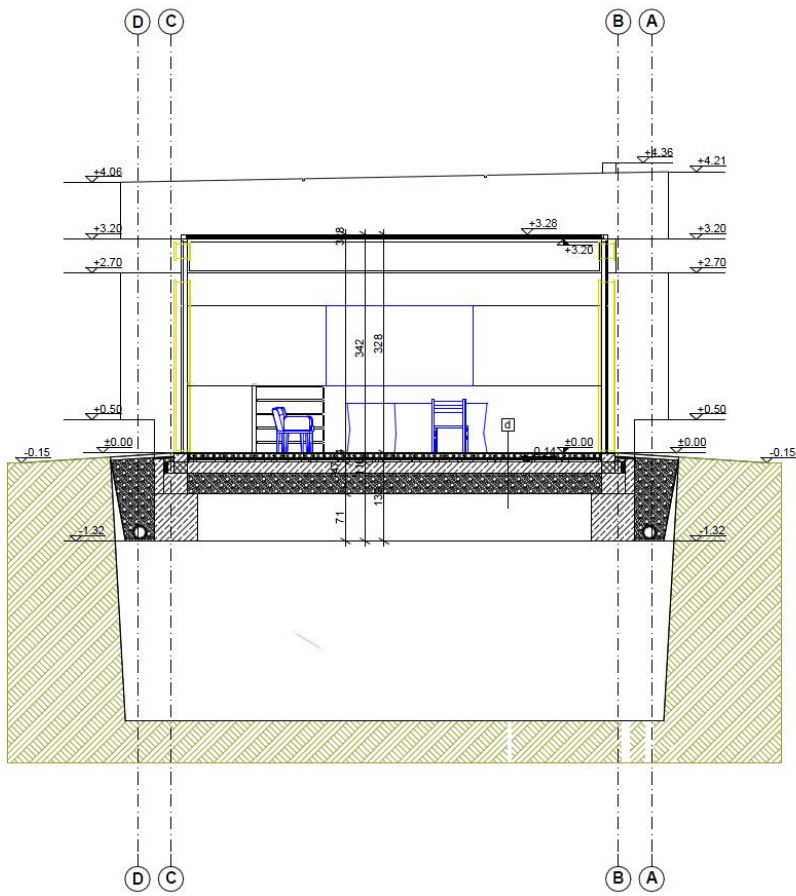


Fig. 13: Seccion B-B

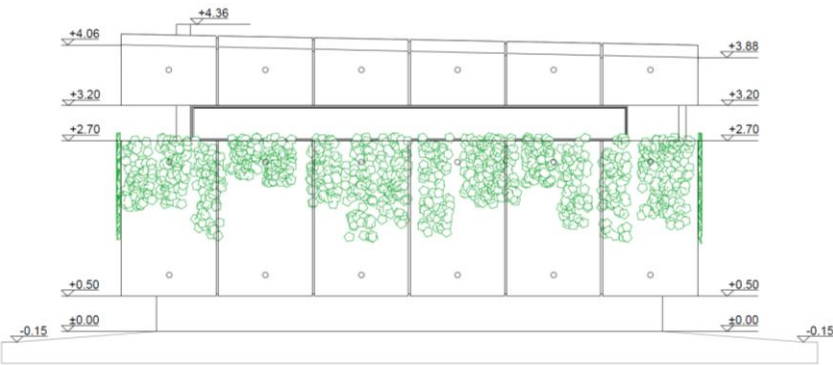


Fig. 14: North Elevation

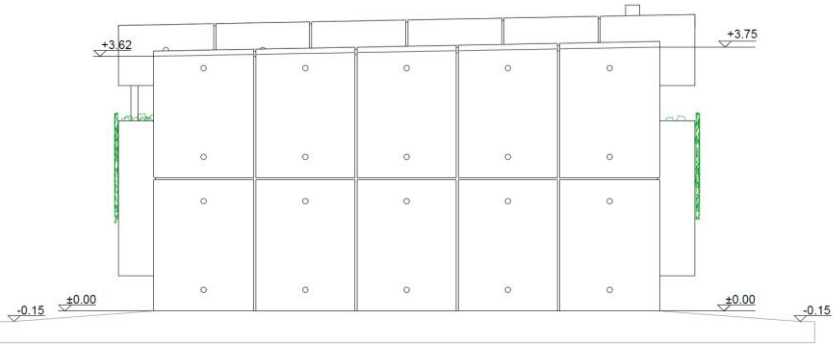


Fig. 15: South Elevation

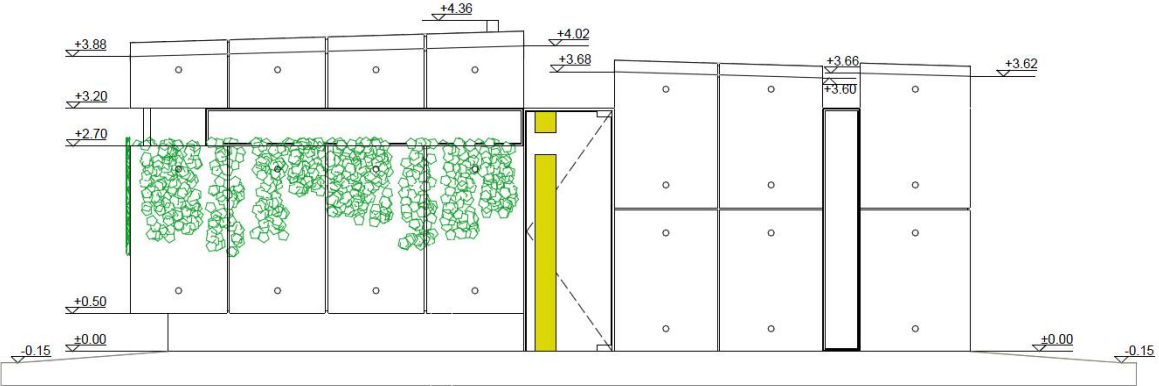


Fig. 16: West Elevation

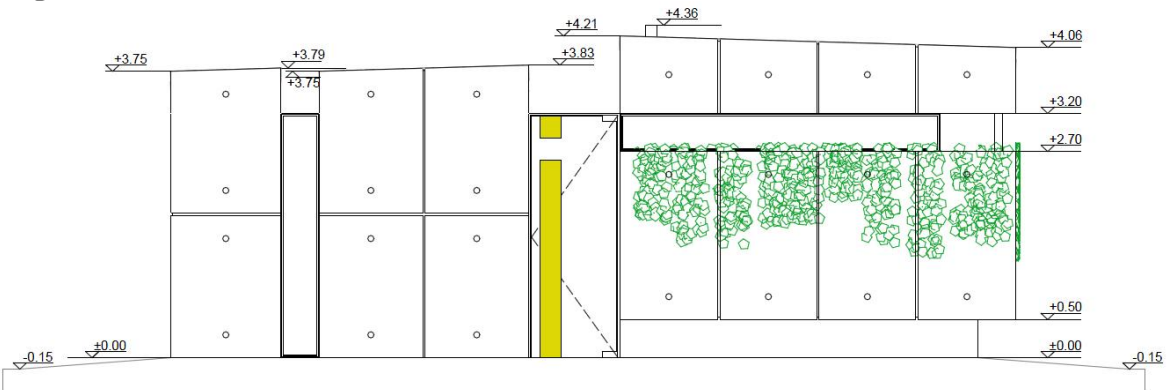


Fig. 17: East Elevation

5 CONCLUSION

The initial aims for improving the situation of orientation within Kosovo at least for the biggest target group in this case – the tourists, I feel that can be achieved with the erection of this specific structure. To help with the promotion, retail is appended to the functions of this building.

If the project would result successful as intended, the next step would be placing kiosks in critical parts of the cities, enabling the people passing by to access the information about the particular city.