

EQUATORIAL SURFACE CURRENT  
SYSTEM ALONG 23°W (JULY 1982,  
JANUARY 1984)

PH. HISARD AND CH. HENIN

Oceanographic observations were made during the first seven cruises of the FOCAL programme along 23°W from July 82 to January 84. Using direct current measurements and dynamic method the equatorial current system is described. The seasonal variations of the north equatorial countercurrent and the South equatorial current are related to the wind field. An eastward surface current near 2-3°S is a new permanent feature during the period of observation.

O. R. S. T. O. M. Fonds Documentaire  
No : 16423  
Cote : B

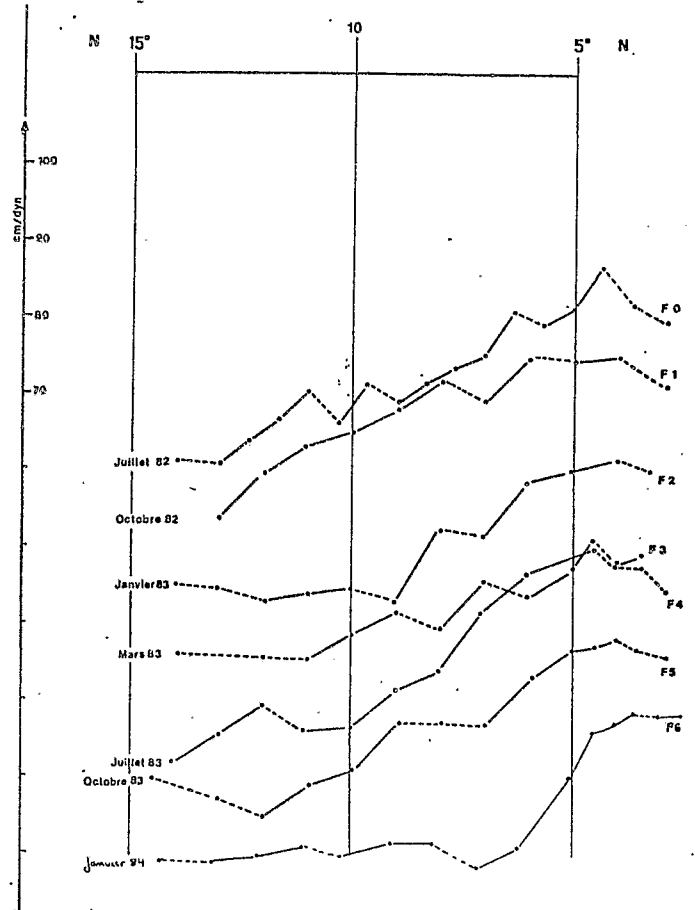


Fig.2. Surface dynamic height relative to 500 db.

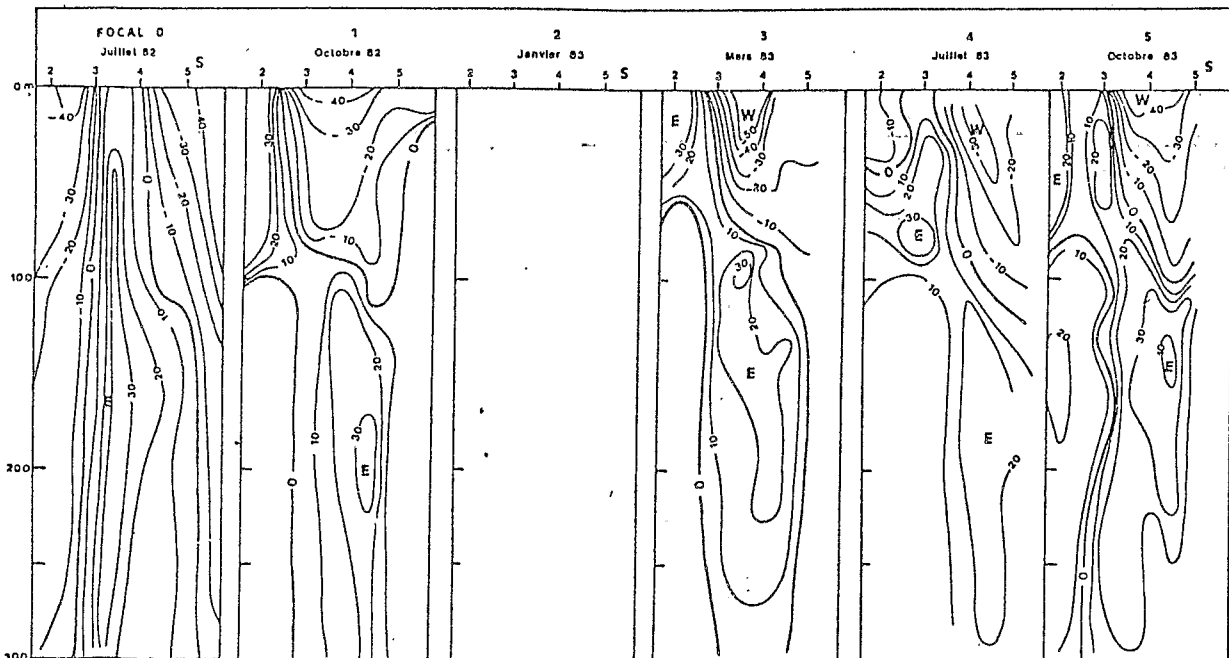
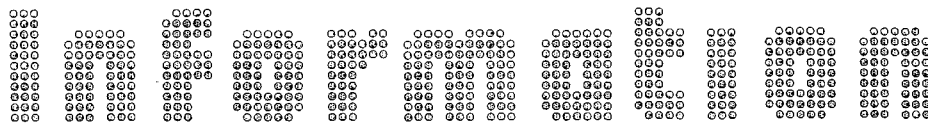
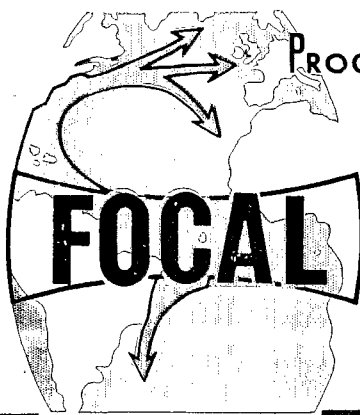


Fig.1. Direct current measurement

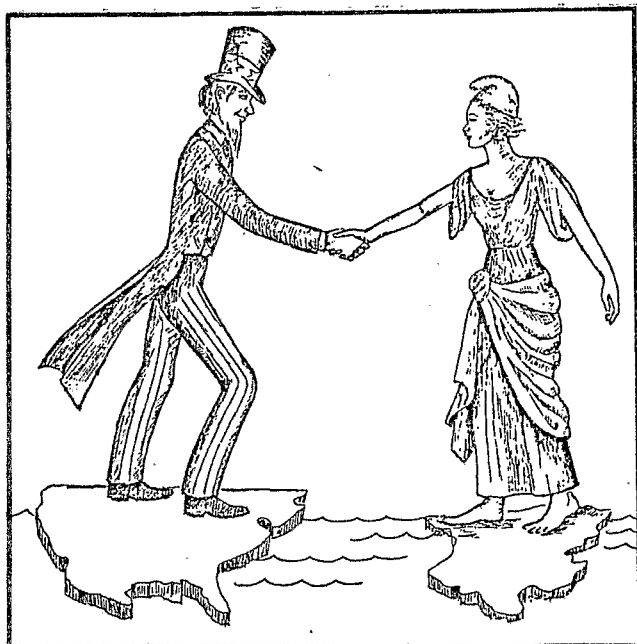


Le bulletin FOCAL INFORMATION diffuse des informations scientifiques sur le programme FOCAL - Programme Français Océan et Climat dans l'Atlantique Equatorial - qui est un programme pluriorganismes (CNRS-Muséum-ORSTOM-CNEXO-Université de BREST-METEO-TAAF). Il est publié par le groupe scientifique FOCAL avec un soutien financier du PNEDC.

La correspondance doit être adressée à G. SOARES, éditeur, Laboratoire d'Océanographie Physique, LA 175 du CNRS, 43, rue Cuvier, 75231 PARIS, Cedex 05. Tel : 707.85.44. Telex : 270686 F LOPMNH.

Ce numéro est spécialement consacré au compte-rendu de la réunion des groupes FOCAL et SEQUAL qui a eu lieu à l'UNESCO à Paris, du 27 au 29 février 1984. La langue anglaise ayant été employée au cours de cette réunion les contributions sont publiées dans cette langue.

Ce compte rendu est suivi de la présentation du programme STACS par R. Molinari.



## THIRD FOCAL-SEQUAL REUNION

The third F/S reunion opened on February 27<sup>th</sup>, at 0945 with a welcome speech, from François Jarrige, the ORSTOM representative. Yves Tourre then made the final modifications to the agenda, emphasizing that it was a working reunion with two important Panel Discussions on Tuesday afternoon (modélisation) and Wednesday morning (Data Bank - Bank Exchange).

Eli Katz remarked that the field programs were past their mid-points, and underlined the importance of comprehensive analyses of both historical data and the results of a dense set of response models. This third F/S reunion as well as Sections, GATE, FGGE, EQUALANT, should serve to initiate the following TOGA - Atlantic-CCCO panel.

After Jacques Merle made a brief review of the FOCAL program, other field programs were discussed. (See Agenda and Appendix).

### SCIENTIFIC RESULTS

Despite the variety of measurement techniques and the short time available to assess the data, a coherent picture of the Tropical Atlantic circulation during 1983 emerged from the scientific talks. We only present the highlights here ; a complete set of abstracts appears in Appendix A.

The FOCAL/SEQUAL experiment began in July 1982, coincident with the start of a massive