



3-23-2021

Space-Occupying Brain Lesions, Trauma-Related Tau Astroglipathy, and ARTAG: A Report of Two Cases and a Literature Review

Adam D. Bachstetter
University of Kentucky, adam.bachstetter@uky.edu

Filip G. Garrett
University of Kentucky, filip.garrett@uky.edu

Gregory A. Jicha
University of Kentucky, gregory.jicha@uky.edu

Peter T. Nelson
University of Kentucky, pnels2@uky.edu

Follow this and additional works at: https://uknowledge.uky.edu/scobirc_facpub



Part of the [Geriatrics Commons](#), [Neurology Commons](#), [Neurosciences Commons](#), and the [Pathology Commons](#)

[Right click to open a feedback form in a new tab to let us know how this document benefits you.](#)

Repository Citation

Bachstetter, Adam D.; Garrett, Filip G.; Jicha, Gregory A.; and Nelson, Peter T., "Space-Occupying Brain Lesions, Trauma-Related Tau Astroglipathy, and ARTAG: A Report of Two Cases and a Literature Review" (2021). *Spinal Cord and Brain Injury Research Center Faculty Publications*. 38.
https://uknowledge.uky.edu/scobirc_facpub/38

This Review is brought to you for free and open access by the Spinal Cord and Brain Injury Research at UKnowledge. It has been accepted for inclusion in Spinal Cord and Brain Injury Research Center Faculty Publications by an authorized administrator of UKnowledge. For more information, please contact UKnowledge@lsv.uky.edu.

Space-Occupying Brain Lesions, Trauma-Related Tau Astrogliopathy, and ARTAG: A Report of Two Cases and a Literature Review

Digital Object Identifier (DOI)

<https://doi.org/10.1186/s40478-021-01152-3>

Notes/Citation Information

Published in *Acta Neuropathologica Communications*, v. 9, issue 1, article no. 49.

© The Author(s) 2021


This article is licensed under a Creative Commons Attribution 4.0 International License, which permits use, sharing, adaptation, distribution and reproduction in any medium or format, as long as you give appropriate credit to the original author(s) and the source, provide a link to the Creative Commons licence, and indicate if changes were made. The images or other third party material in this article are included in the article's Creative Commons licence, unless indicated otherwise in a credit line to the material. If material is not included in the article's Creative Commons licence and your intended use is not permitted by statutory regulation or exceeds the permitted use, you will need to obtain permission directly from the copyright holder. To view a copy of this licence, visit <https://creativecommons.org/licenses/by/4.0/>. The Creative Commons Public Domain Dedication waiver (<https://creativecommons.org/publicdomain/zero/1.0/>) applies to the data made available in this article, unless otherwise stated in a credit line to the data.

REVIEW

Open Access



Space-occupying brain lesions, trauma-related tau astrogliopathy, and ARTAG: a report of two cases and a literature review

Adam D. Bachstetter^{1,2,3*} , Filip G. Garrett^{3,4}, Gregory A. Jicha^{3,5} and Peter T. Nelson^{3,4}

Abstract

Astrocytes with intracellular accumulations of misfolded phosphorylated tau protein have been observed in advanced-stage chronic traumatic encephalopathy (CTE) and in other neurodegenerative conditions. There is a growing awareness that astrocytic tau inclusions are also relatively common in the brains of persons over 70 years of age—affecting approximately one-third of autopsied individuals. The pathologic hallmarks of aging-related tau astrogliopathy (ARTAG) include phosphorylated tau protein within thorn-shaped astrocytes (TSA) in subpial, subependymal, perivascular, and white matter regions, whereas granular-fuzzy astrocytes are often seen in gray matter. CTE and ARTAG share molecular and histopathologic characteristics, suggesting that trauma-related mechanism(s) may predispose to the development of tau astrogliopathy. There are presently few experimental systems to study the pathobiology of astrocytic-tau aggregation, but human studies have made recent progress. For example, leucotomy (also referred to as lobotomy) is associated with a localized ARTAG-like neuropathology decades after the surgical brain injury, suggesting that chronic brain injury of any type may predispose to later life ARTAG. To examine this idea in a different context, we report clinical and pathologic features of two middle-aged men who came to autopsy with large (> 6 cm in greatest dimension) arachnoid cysts that had physically displaced and injured the subjects' left temporal lobes through chronic mechanical stress. Despite the similarity of the size and location of the arachnoid cysts, these individuals had dissimilar neurologic outcomes and neuropathologic findings. We review the evidence for ARTAG in response to brain injury, and discuss how the location and molecular properties of astroglial tau inclusions might alter the physiology of resident astrocytes. These cases and literature review point toward possible mechanism(s) of tau aggregation in astrocytes in response to chronic brain trauma.

Keywords: Tangles, NFTs, PSP, TBI, Tauopathy, Meninges, FTLN

Introduction

Much remains unknown about astrocytes in healthy and diseased states. Here we discuss a specific subset of astrocyte pathology, related to a hypothesis that localized trauma can induce tau astrogliopathy, which is similar in appearance to age-related tau astrogliopathy (ARTAG).

It has recently become clear that chronic traumatic encephalopathy (CTE) is associated with both neuronal and glial tau pathology [1, 2]. Further, even decades after neurosurgical procedures severing frontal white matter tracts (leucotomies), the frontal cortical tissue that was traumatically affected tended to contain astrocytes with abnormal tau accumulations [3]. These observations raised intriguing questions about human astrogliopathy seen commonly at autopsy, and the inter-relationships between brain trauma and astrocytic tau proteinopathy. This review includes a presentation of two cases

*Correspondence: adam.bachstetter@uky.edu

¹ Spinal Cord and Brain Injury Research Center, University of Kentucky,

741 S. Limestone St., Lexington, KY 40536, USA

Full list of author information is available at the end of the article



© The Author(s) 2021. **Open Access** This article is licensed under a Creative Commons Attribution 4.0 International License, which permits use, sharing, adaptation, distribution and reproduction in any medium or format, as long as you give appropriate credit to the original author(s) and the source, provide a link to the Creative Commons licence, and indicate if changes were made. The images or other third party material in this article are included in the article's Creative Commons licence, unless indicated otherwise in a credit line to the material. If material is not included in the article's Creative Commons licence and your intended use is not permitted by statutory regulation or exceeds the permitted use, you will need to obtain permission directly from the copyright holder. To view a copy of this licence, visit <http://creativecommons.org/licenses/by/4.0/>. The Creative Commons Public Domain Dedication waiver (<http://creativecommons.org/publicdomain/zero/1.0/>) applies to the data made available in this article, unless otherwise stated in a credit line to the data.

that experienced chronic mechanical stress induced by large, localized, space-occupying brain lesions (arachnoid cysts), examined for ARTAG and other pathologies. These case reports are followed by a broader discussion of relevant scientific literature, focusing on human studies.

Case reports

Arachnoid cysts are non-neoplastic alterations of the leptomeninges resulting in a fluid-filled space between the brain or spinal cord and the arachnoid membrane. Arachnoid cysts usually arise from arachnoid membrane splitting in early development, although secondary cysts have been reported following head trauma [4, 5]. In adults, arachnoid cysts are often clinically silent and may persist for decades [6, 7]. We present clinical and pathologic findings from two adult males with large arachnoid cysts. Note that in keeping with terminology applied in other conditions [8, 9], we distinguish between ARTAG (concept and disease) and the relevant neuropathologic hallmarks (ARTAG–NC); likewise for CTE and CTE–NC.

Case 1 A Caucasian male who was part of the University of Kentucky Alzheimer's Disease Center longitudinal research cohort [10] came to autopsy at age 72 following a complex neurological history. His mother died with unspecified dementia, and his maternal grandmother had ALS. He worked in the field of clothing manufacture and retired at age 55. Progressive dementia was first noted at age 66, characterized by aggressive behavior that was clinically compatible with a frontotemporal syndrome. The subject's history was also notable for epilepsy (complex-partial seizures), type II diabetes, depression, intermittent alcohol use (up to a 1L whiskey/week), and there was a clinical note of "post-Polio syndrome". Reports of possible football-related concussions in high school were noted, as well as falls in late life, but more detailed information on closed head injury and brain trauma were lacking in the medical and research records. Final Mini-Mental State Examination score at age 70 was 17, final global clinical dementia ratings (CDR) scale score was 2, and final CDR "sum of boxes" = 13, indicating dementia of moderate severity. The patient died of acute cardiopulmonary arrest, unrelated to his dementia syndrome. Four years before death, a head computed tomography (CT) scan was performed as part of his seizure workup which revealed a large arachnoid cyst within the left temporal fossa and Sylvian region (Fig. 1a). Neurosurgical intervention was not pursued, in favor of observation. In serial CT scans performed over the subsequent years, the cyst remained stable in size, with progressive global brain atrophy notably increasing over time.

On post-mortem examination, the left side of his brain showed a large evacuated area measuring $75 \times 50 \times 30$ mm (Fig. 1b). The lesion was adjacent to the left Sylvian fissure and resulted in extensive encroachment on the anterior temporal lobe, completely exposing the left middle cerebral artery from the ventral aspect (Fig. 1a, b). There was marked deformation and atrophy of the medial temporal lobe structures, and evidence for grossly apparent orbitofrontal subpial hemorrhage or contusion.

Microscopic examination confirmed that the cyst lining comprised a delicate fibrous membrane with areas of an intact single layer of cells (arachnoid cells) and scattered foci of meningothelial cells. In the orbitofrontal cortex where discoloration (subpial hemorrhage) was noted on gross exam, the same area showed chronic degenerative changes including localized necrosis, neuropil rarefaction, and abundant hemosiderin-laden macrophages (not shown). A neurodegenerative assessment revealed an intermediate level of Alzheimer's disease neuropathologic changes (ADNC): (Thal phase 5; Braak NFT stage IV; Frequent neuritic plaques). The 2012 NIA-AA consensus ABC score was A=3, B=2, C=3. In addition, immunohistochemical stain for aberrantly hyperphosphorylated tau proteins (PHF-1 antibody [11]) displayed features of both CTE–NC (Fig. 2) and ARTAG–NC (Fig. 3). The CTE–NC-like changes included patchy distribution of neuronal PHF-1+ tau at sulcal depths of the cerebral cortex (Fig. 2). Several cerebrovascular pathologies were also identified, including small chronic ischemic infarcts.

While CTE–NC-like intraneuronal tauopathy was observed focally, the ARTAG–NC-like pathology was more extensive (Fig. 3). Numerous TSAs were seen within the white matter of the neocortex (frontal, temporal and parietal lobe) and the medial temporal lobe structures (amygdala, entorhinal cortex, and hippocampus). Many TSAs were present subjacent to the pia mater. The cortical regions adjacent to the arachnoid cysts showed prominent astrocytic tau accumulation arranged along small vessels at the depth of the sulci (Fig. 3d). The distribution and proximity of the CTE–NC and ARTAG–NC to the arachnoid cysts raised the question of whether this large space-occupying lesion induced the tau proteinopathy through chronic mechanical stress.

Case 2 A Caucasian male was evaluated post-mortem by the University of Kentucky Pathology Department at age 64. He had previously been employed at a commercial nursery and used spray insecticides regularly on the job but retired before age 40. There was no known family history of dementia. Medical records indicated the presence of a "congenital" arachnoid cyst. His medical history was otherwise complex. He underwent a double lung transplant at age 57 years due to idiopathic pulmonary

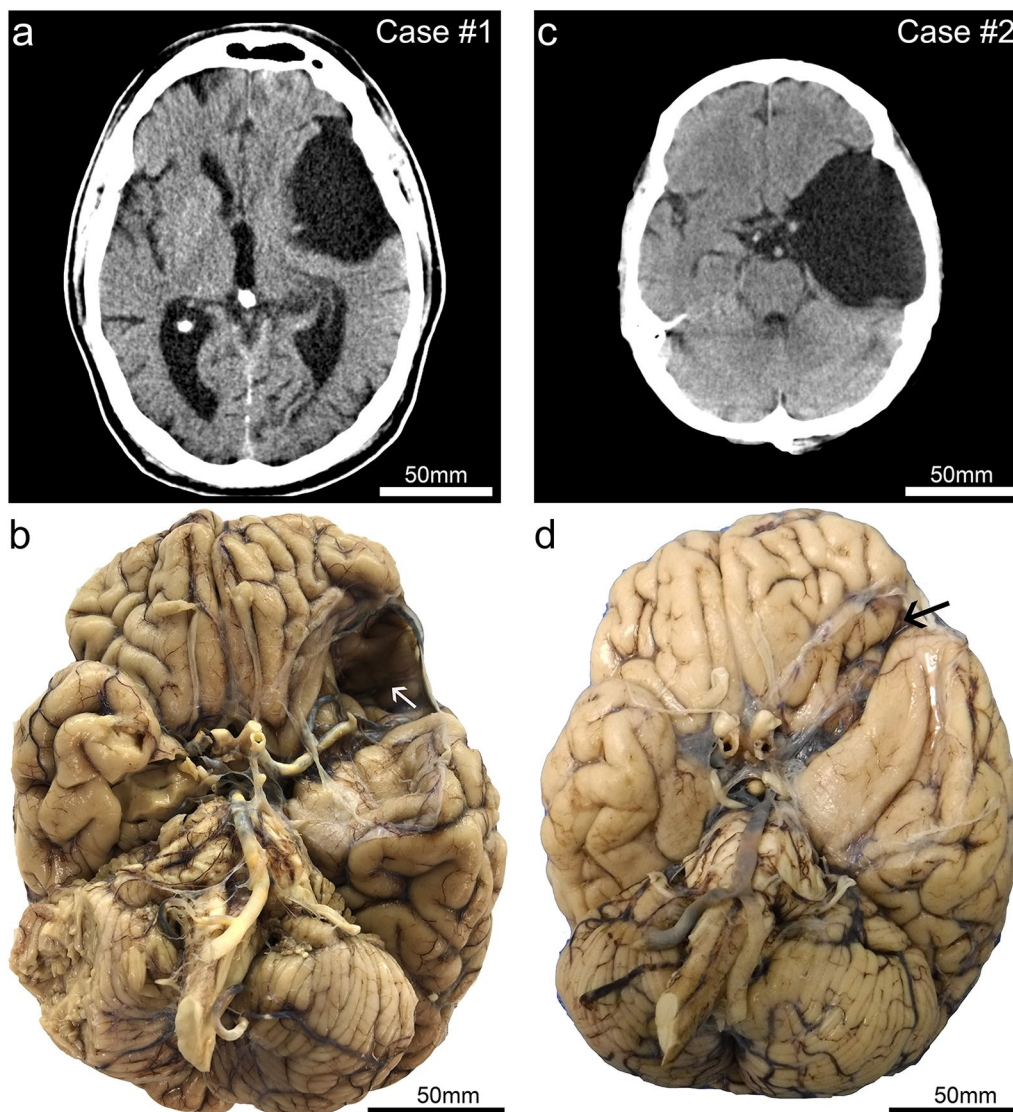
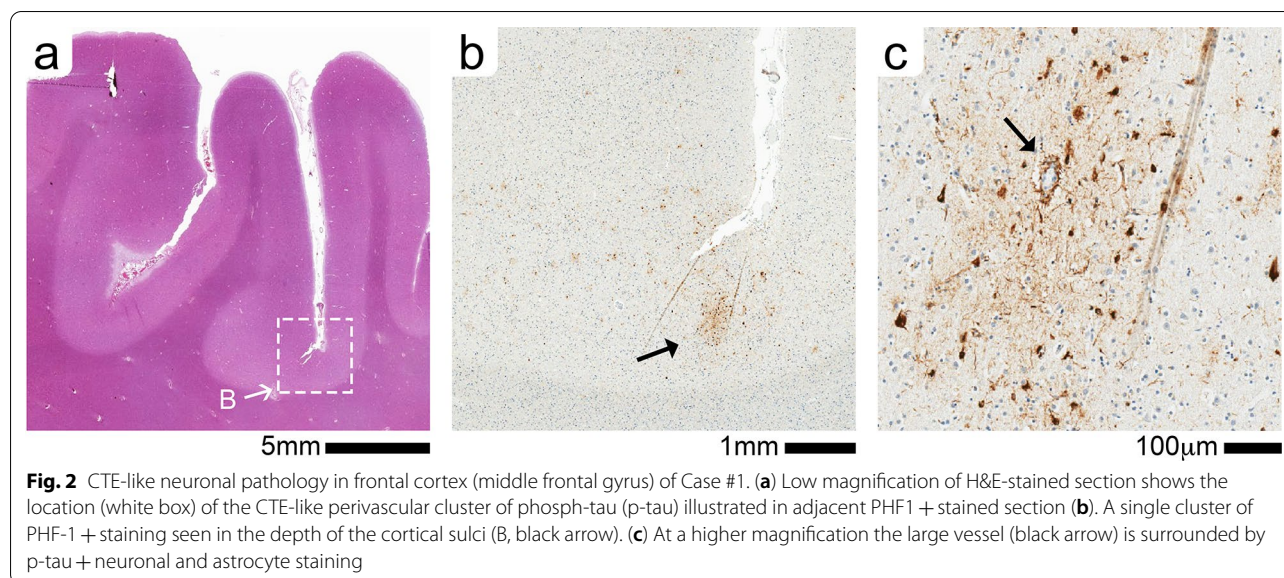


Fig. 1 Clinical (premortem) computerized tomography (CT) scans, and photographs of brain after autopsy and fixation, in two cases with large arachnoid cysts. Case #1 is a male, 72 years old at death. This CT scan (a) was acquired at age 68. (b) The brain at autopsy following fixation from Case #1 shows the large left-sided arachnoid cyst cavity. Both the anterior temporal lobe and the orbitofrontal frontal lobe are affected by the lesion. Note that on the surface of the frontal cortex within the cyst cavity there is discoloration (white arrow). By contrast, the right side lacks evidence of indentation or contusion in the orbitofrontal cortex. Case #2 is a male, 64 years old at death. The CT scan (c) was acquired at age 56. As seen in the brain at autopsy following fixation (d), the arachnoid cyst is larger in the rostral-caudal axis in Case #2 in comparison to that of Case #1. However, the lesion is shallower—the affected region is smaller in the dorsal–ventral axis, and there was less impact on the orbitofrontal cortex (black arrow) in Case #2 compared to Case #1

fibrosis, and was on tacrolimus. He had advanced liver disease with biopsy-diagnosed sarcoidosis, chronic CMV viremia (taking valacyclovir 900 mg twice daily) and rheumatoid arthritis treated with chronic steroids. At age 54, he “sustained a right-sided intracranial hemorrhage” and reportedly underwent craniotomy and surgical evacuation that left him with a partial facial hemiplegia. The arachnoid cyst was visualized at the University of

Kentucky radiographically (shown in Fig. 1c) at age 56. Neurosurgical intervention was not pursued, in favor of observation. Serial CT scans performed at ages 58 and 62 years showed that the cyst remained stable in size. At age 60, he was seen by Neurology for parkinsonism, which was attributed to a medication (metoclopramide) side-effect. Concerns were raised about short-term memory loss at that evaluation, but cognitive impairment was



never formally diagnosed. No other salient neurological symptoms were noted in the medical record review.

On post-mortem examination, the brain showed an evacuated area on the left side measuring 80 × 35 × 30 mm (Fig. 1c, d). Compared to the arachnoid cyst seen in Case #1, this lesion did not appear as impactful on the orbitofrontal cortex, but still caused significant distortion of the temporal lobe. Microscopic examination confirmed the arachnoid nature of the cyst and revealed severe, widespread small vessel disease, including arteriolosclerosis, widening of the Virchow–Robin spaces, and perivascular pigment-laden macrophages. Sections sampled from near the arachnoid cyst were negative for AD–NC (neurofibrillary tangles and neuritic plaques); however, scant p-tau immunoreactive structures were focally present within the medial temporal lobe (Fig. 4). The p-tau immunoreactivity was seen adjacent to the ependymal lining of the lateral ventricle (inferior horn) (Fig. 4a) and occasionally surrounding Virchow–Robin spaces of the parenchymal arterioles (Fig. 4b).

Literature review: astrocytes, brain injury, and tau protein

Clinical and biologic features of Cases #1 and #2 relate to three research domains: astrocytes; the sequelae of chronic mechanical stress and brain trauma; and tau pathobiology. Astrocytes are the most numerous cell type in the CNS, serving fundamental roles in support of brain function and regulating brain energy metabolism [12, 13]. Astrocytes also sustain synaptic activity and homeostasis [14], and contribute to CNS inflammatory signaling [15, 16]. The astrocyte glia limitans is a critical anatomic domain at the blood–brain-barrier and at the

interface with the meninges [17]. Astrocytes also help remove cellular waste via glymphatic flow [18]. Given the many necessary functions of astrocytes in CNS physiology, astrocytic failure may contribute to synaptic dysfunction, neuronal loss, and neurodegeneration through a number of biologic mechanisms [19–21].

Astroglipathy is a term used to describe a spectrum of astrocyte changes associated with injury or disease. Astroglipathy can be divided into reactive astrogliosis or astrocytopathy [22], with the caveat that neither of these processes are thoroughly understood. The term reactive astrogliosis refers to astrocytic responses to changes in the environment. Following brain injury, reactive astrogliosis walls off the area of injury creating a functional border (“glial scar”) limiting molecular infiltration and recruitment of immune cells into the parenchyma [17]. With the proliferation of astrocytes and a loss of the astrocyte domain structure, a glial scar is an extreme example of a reactive astrocyte change, whereas many different alterations in brain physiology or disease may cause a milder reactive astrogliosis [22]. Reactive astrogliosis is typically both neuroprotective and reversible [22].

Astrocytopathy, in contrast, is a term which describes degenerative remodeling of astrocytes, and is linked to many different brain diseases. For example, Alexander’s disease is a primary astrocytopathy caused by the overexpression of the intermediate filament glial fibrillary acidic protein (GFAP) [22]. Although primarily linked to an astrocytic protein overexpression, Alexander’s disease is associated with misfolding of at least one other protein—TDP-43 [23]. ARTAG and severe (advanced-stage) CTE are astrocytopathies characterized by astrocytic tau inclusions.

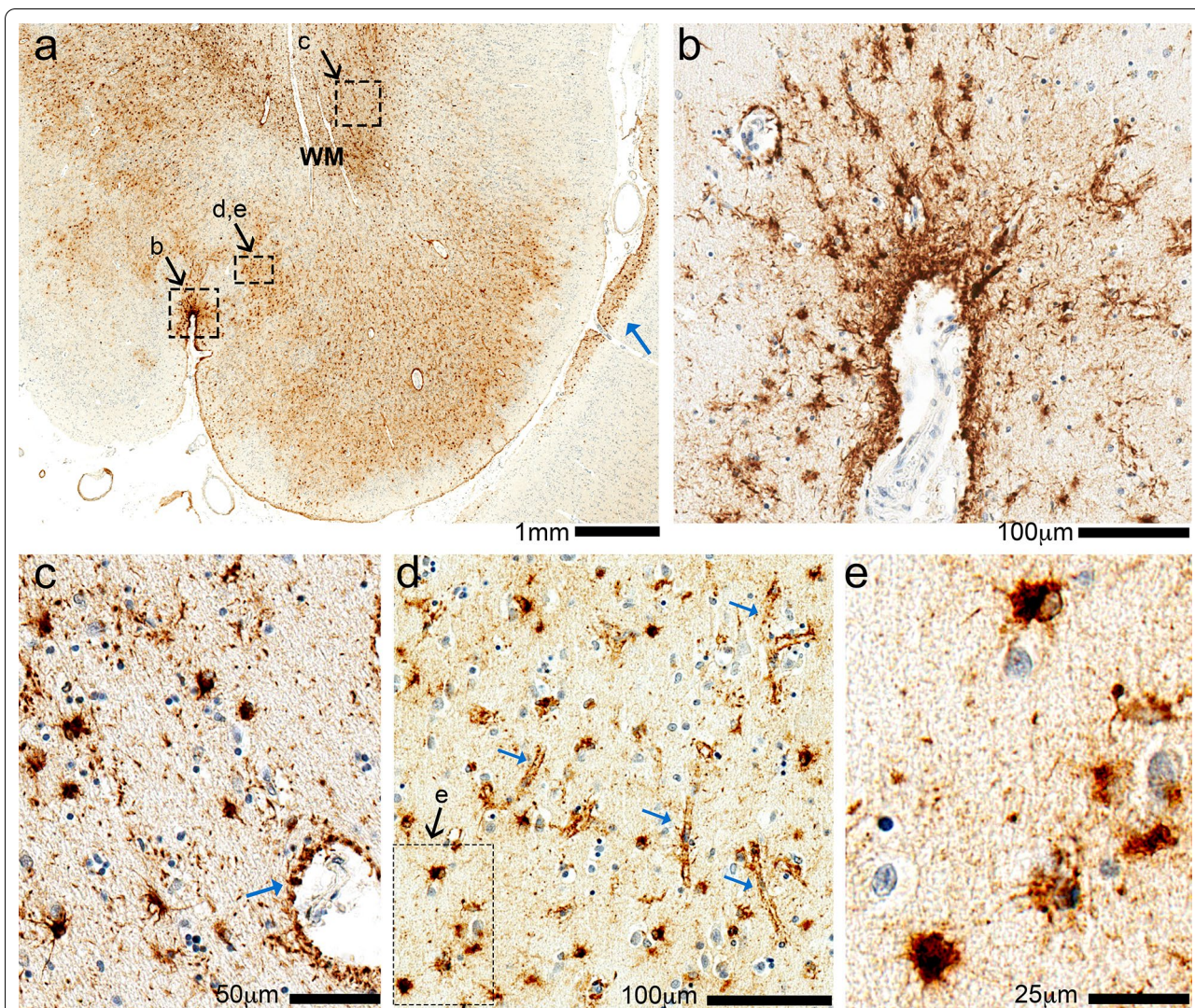


Fig. 3 Phospho-tau (p-tau) immunohistochemistry in the left fronto-parietal region of Case 1. In the low-magnification photomicrograph (a), the pia mater is near the bottom and white matter (WM) near the top. This is a section of the left fronto-parietal cortex, which is caudal to the region most directly impacted by the arachnoid cyst, and shows widespread p-tau (PHF-1) immunoreactivity in the subpial, gray matter, and white matter regions. In each of these compartments there is prominent staining of p-tau surrounding small blood vessels, and also in cells with morphologic features of astrocytes. Subpial staining is demonstrated in a small sulcus (b) and additional subpial staining is shown at low power in the adjacent gyrus (blue arrow in a). (c) White matter shows p-tau cells with astrocyte morphology, as well as staining around blood vessels resembling astrocyte foot processes (blue arrow). (d) The astrocytic p-tau in gray matter highlight pericapillary staining (blue arrows); the inset shows compact p-tau+ cells with astrocyte features (e)

The normal functions of tau protein are debated [24–26] and the roles for tau proteins in glial cells are mostly unknown. In the adult human brain, six tau isoforms are generated by alternative splicing of the microtubule associated protein tau (*MAPT*) gene. Depending on whether the proteins contain three or four carboxy-terminal tubulin-binding domains (“repeats”), the proteins can be classified as 3R or 4R tau, respectively [27, 28]. Immunohistochemical studies showed that astrocytes in

ARTAG-NC and CTE-NC are negative for 3R tau and positive for 4R tau [29, 30].

To date, ARTAG-NC has not been reported in animal models in response to injury [31]. Yet it must be emphasized that rodents do not develop tauopathy in aging as humans do [32], and studies of genetically modified rodent models have primarily focused on neuronal tau [31]. The lack of astroglial tauopathy was mostly

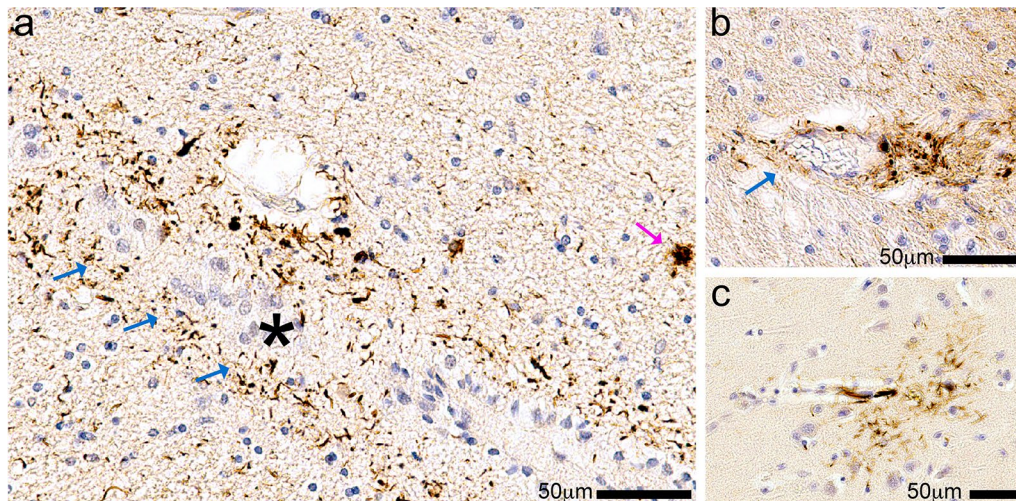


Fig. 4 Sparse glial phospho-tau (p-tau) immunohistochemistry in Case 2. In this case, p-tau (PHF-1) immunoreactive structures were much more sparse, mostly non-neuronal, and were apparent in the medial temporal lobe. **(a)** In the hippocampus, p-tau immunostaining was found surrounding the rostral fringe of the inferior horn of the lateral ventricle (blue arrows; the ependymal lining denoted with an asterisk). Note that a few TSAs are stained (e.g., magenta arrow). **(b)** Shows p-tau immunoreactivity surrounding Virchow–Robin spaces of arterioles (blue arrow). Scattered p-tau + cells with delicate glial processes were also observed, such as that shown in **(c)** from the left-sided temporal cortex

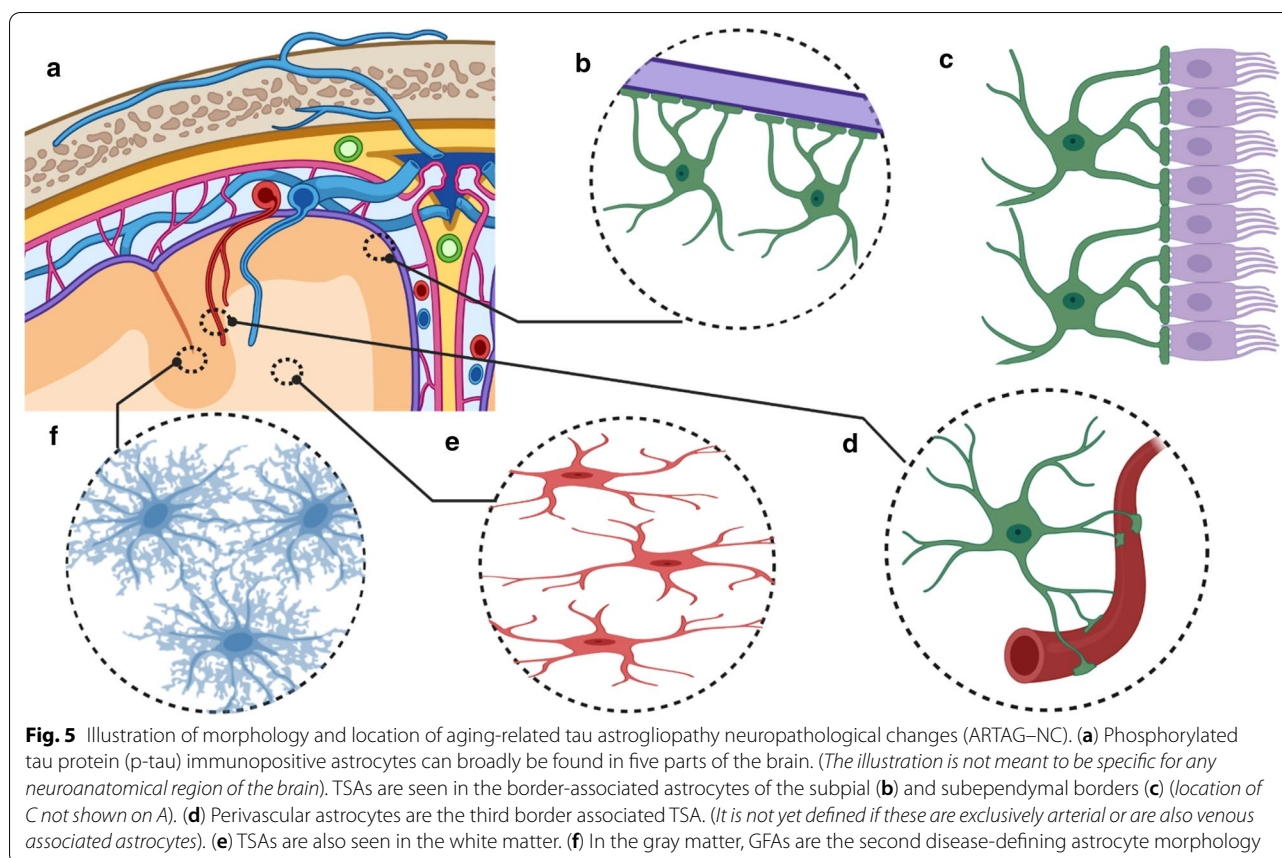
described in engineered mice with human tau transgenes driven by neuron-specific promoters that develop solely neuronal rather than glial tau inclusions. The animal models' inability to recapitulate human tau changes in response to brain injury could also be due to species difference in the native tau protein sequence, and/or kinases that contribute to the development of a tau astrogliaopathy, as well as species differences in brain size and structure [33–36]. Thus, despite the similarities between the astroglial tau inclusions seen in CTE and ARTAG, there are few experimental model systems to study the pathology. The human phenomenology of tau astrogliaopathies (as in other diseases) will likely prove informative. A goal of the present review is to discuss the relevant observations in human brains, that may aid in the development of mechanistic hypotheses for the development of tau astrogliaopathy.

Inter-relationships between CTE and ARTAG: evolving concepts

Associated with repetitive head injuries, CTE was first studied in boxers as dementia pugilistica or “punch-drunk syndrome”, with subsequent research on American football players and other elite athletes engaged in contact sports where closed head injury is common [37, 38]. According to the current criteria, the CTE–NC pathognomonic lesion is p-tau+ neurofibrillary tangles surrounding small blood vessels, in a patchy distributions at sulcal depths of the cerebral cortex [2, 39]. CTE–NC requires the presence of p-tau immunoreactive neurons

with or without p-tau immunoreactive astrocytes; however, these lesions commonly coexist [2, 39, 40]. The distribution of tau pathology in CTE–NC and ARTAG–NC suggests some shared etiology [41–43]. Further, the presence of tau pathology in astrocytes in cases with CTE–NC suggests that ARTAG–NC could be a response of astrocytes to chronic mechanical stress or repetitive acute traumatic brain injury [1, 2, 43].

Whether a single moderate-to-severe TBI leads to CTE–NC is debated [1, 44–47]. Arena et al. [1] evaluated a series of cases with CTE–NC for astroglial tau and compared those cases to other tauopathies including ARTAG, AD, corticobasal degeneration (CBD), primary age-related tauopathy (PART), Pick's disease (PiD), and progressive supranuclear palsy (PSP). Astrocyte tau in CTE–NC shared molecular properties with ARTAG cases. That is, the p-tau+ astrocytes expressed only 4R tau, similar to ARTAG-p-tau+ astrocytes, while neurons in CTE express both 3R and 4R tau, similar to AD [43]. Cherry et al. [48] examined 99 cases of CTE–NC for the presence of 3R and 4R tau. Neurons expressed both 3R and 4R tau pathology, while astrocytes only expressed 4R tau pathology. However, astrocyte tau changes were only found in the more advanced (Stage III/IV) CTE–NC cases. Intriguingly, p-tau+ astrocytes increased with age. A tipping point was seen in the sixth decade of life, with the percentage of p-tau+ astrocytes increasing linearly into the seventh and eighth decade of life, at which point astrocytes accounted for at least 50% of the 4R tau+ cells in the perivascular lesions [48]. Many questions remain



about the importance of intrinsic (including genetic) factors, injury physics, and the how idiosyncratic single-trauma (TBI) and multiple/repetitive trauma (CTE) conditions relate to these findings.

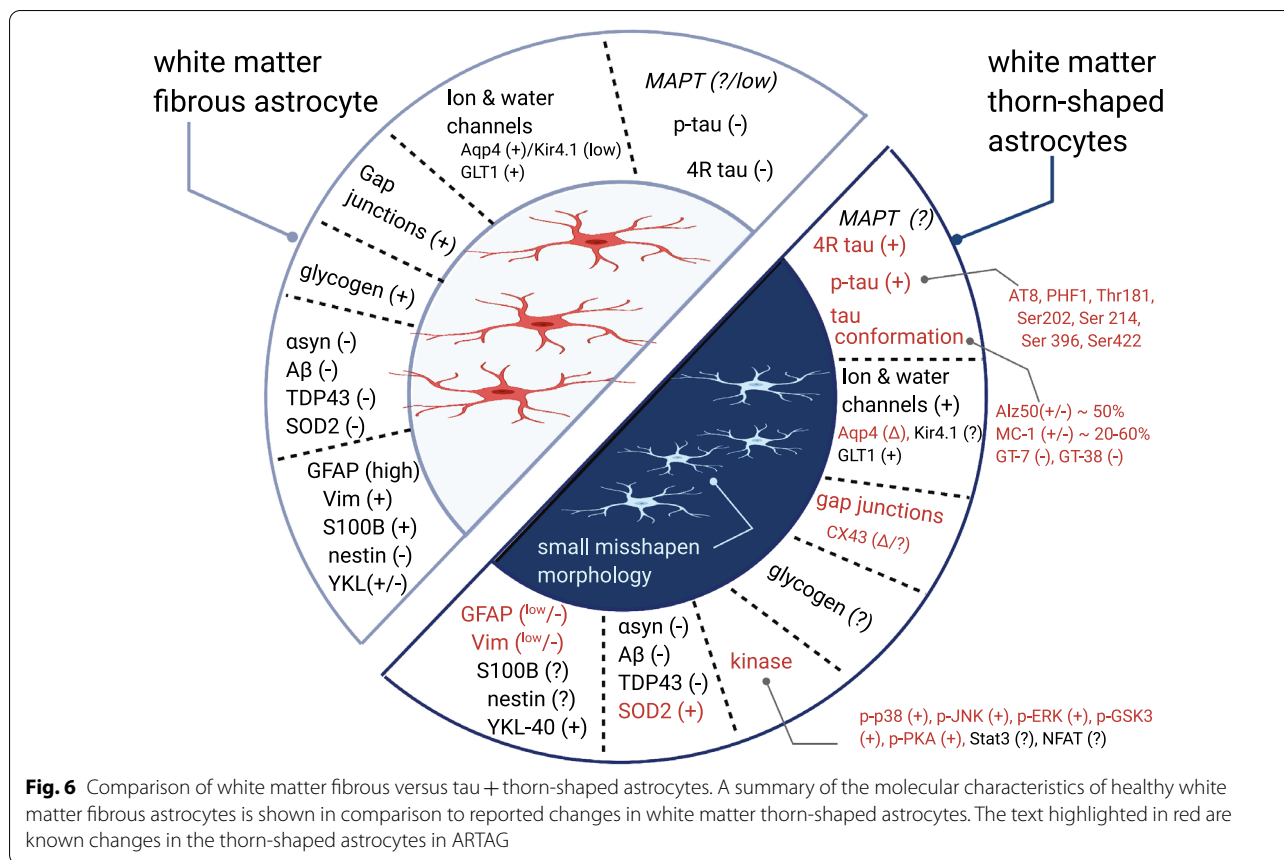
As awareness grows of CTE and its public health impact, case reports and cohort studies have accumulated outside the realm of contact sports [49–53]. These have included subjects with trauma from reported falls, vehicular accidents, military service, and other injuries that are independent of sports-related injuries. Interestingly, much of the reported pathology in such cases appears to be ARTAG-NC—perivascular p-tau+ astrocytes. However, there are also examples of p-tau+ neurofibrillary tangles at sulcal depths of the cerebral cortex in non-sports related CTE [2, 53].

In the two current cases with large arachnoid cysts, the individual (Case #1) with ARTAG-NC and CTE-NC like pathology had prior history of playing contact sports with documented concussions. In contrast, the person without ARTAG-NC or CTE-NC pathology (Case #2) had no known history of contact sports or TBI. These results support the connection between TBI and ARTAG but also suggest that TBI is not the sole driver of the ARTAG-NC seen in these cases. We cannot rule out that

the nature of the arachnoid cyst in Case #1 was deeper and therefore itself caused added chronic mechanical stress related injury to the brain, as indicated by the bruising along the cyst cavity (Fig. 1). This hypothesis is supported by the findings of minimal/incipient ARTAG-NC in Case #2, that also demonstrated chronic mechanical stress related injury to the brain, without a history of acute TBI or closed head injury (Fig. 1).

The community-based autopsy study by Forrest et al. [54] provided insights into the prevalence of CTE and ARTAG in a high-quality European cohort. This study included 310 individuals aged 76-91 years old and evaluated multiple brain regions for the presence of CTE-NC and ARTAG-NC. One-third of the cases in this cohort were found to have ARTAG-NC. The findings of a very substantial proportion of elderly brains harboring ARTAG-NC are consistent with results from other community-based and clinic-based autopsy cohorts [30, 55–57]. It was also described that neocortical, as opposed to limbic or brainstem ARTAG-NC, was most strongly associated with dementia status [57].

Forrest et al. went on to explore the connection between a reported history of TBI and ARTAG-NC [54]. Of the 310 people included in the study, 67 people



completed a self-reported TBI questionnaire. Only six subjects reported a loss of consciousness for at least 10 minutes (this number may reflect an underreporting or recall bias). If a single brain trauma caused ARTAG, ARTAG-NC would be expected in those six cases. However, only two of six cases with documented TBI were found to have ARTAG-NC—the same 1/3rd proportion as in the cohort overall. These results support the null hypothesis and underscore that more data is required about the relationship between clinical TBI history and ARTAG neuropathology.

In a novel approach to the study of brain trauma, Shively et al. [3] examined the brains of five individuals who underwent surgical leucotomy at least 40 years prior to death. The leucotomized subjects were schizophrenics and the study included matched subjects with schizophrenia that did not have leucotomy [3]. Thus, they controlled for severity, time, and location of the brain injury, while avoiding some of the recall bias inherent to sports and TBI studies.

In the leucotomy cases, as expected, pathological evaluation showed severe, localized white matter damage. CTE-NC was also present in some cases, including p-tau in neurons in cortical sulcal depths and around small blood vessels [3]. However, the dominant pathology

was ARTAG-NC-like changes (astrocyte p-tau) and not neuronal CTE-NC pathology. The matched control cases lacked ARTAG-NC or CTE-NC changes [3]. Around the surgical lesion in the white matter, a dense astroglial scar was present along with subpial astrocytosis at the proximal depth of the overlying cortical tissue's sulci. Despite the severity of the subcortical white matter injury in the leucotomy cases, the gray matter was relatively intact; and cortical astrogliosis was absent. We note that Okamura et al. [58] also reported neuronal and glia p-tau pathology in 2 Japanese cases following leucotomy and provided a summary of previous neuropathological evaluations of leucotomy cases [58].

Shively et al. [3] tested whether tauopathy in astrocytes was a predictable component of glial scars or is a more idiosyncratic degeneration of a subset of astrocytes. Using serial sections, they stained for GFAP+ astrogliosis and p-tau. Despite the dense GFAP+ staining in the white matter adjacent to the cystic space-occupying lesion border, there was no p-tau staining in adjacent serial sections [3]. The lack of neuronal or astrocyte p-tau is informative as it shows that ARTAG-NC is not simply an unselective response to injury. Moreover, p-tau+ astrocytes were seen at the pia surface in depths of the

sulci. In contrast to the intense astrogliosis seen at the border of the cystic space-occupying lesion, where ARTAG-NC was not seen, the subpial ARTAG-NC positive regions demonstrated only limited GFAP+ astrogliosis [3]. This suggests that astrogliosis alone was not the primary cause of ARTAG-NC. There must be other contributing factors, which may be specific to particular anatomic microdomains.

Shively et al. [3] suggested two hypotheses for the neuropathologic changes seen in their study. The first hypothesis was that axonal injury was the cause of the lesions. In the second hypothesis, the sulcal depths were more vulnerable to mechanical stress caused by the leucotomy procedure. Similar arguments for mechanical stress at sulcal depths have been proposed for CTE. The authors, however, stated their data supported the first hypothesis that the p-tau accumulation resulted from axonal damage. They further suggested that the accumulation of perivascular tau and the tau in the sulcal depths might be associated with the clearance of tau from the brain. They proposed that these locations were consistent with tau clearance via a glymphatic flux [3]. That is, the p-tau accumulation in the perivascular space and sulcal depths amounted to a ring around the drain as tau left the brain from injured axons. In our current case studies, it is notable that the arachnoid cyst in Case #2 caused long-term deformity of the brain, with far milder ARTAG-NC, underscoring that additional factors (intrinsic and environmental) may play important roles.

Distinct populations of p-tau + astrocytes

Astrocytic tau inclusions are not only seen in ARTAG. Indeed, astrocytic tau changes can be a cardinal neuropathologic (if not pathognomonic) lesion in primary tauopathies, including tufted astrocytes in PSP, astrocytic plaques in CBD, globular astroglial inclusions in GGT, and ramified astrocytes in PiD [41, 42, 59]. Astrocytic tau changes in these primary tauopathies differ in morphology and location from those seen in ARTAG-NC. Importantly, as described in our case reports, there are subregions of the brain that appear more vulnerable towards the development of ARTAG-NC. Therefore, to understand possible causes of ARTAG-NC and how ARTAG-NC might alter brain physiology, it is important to appreciate the heterogeneity of ARTAG-NC.

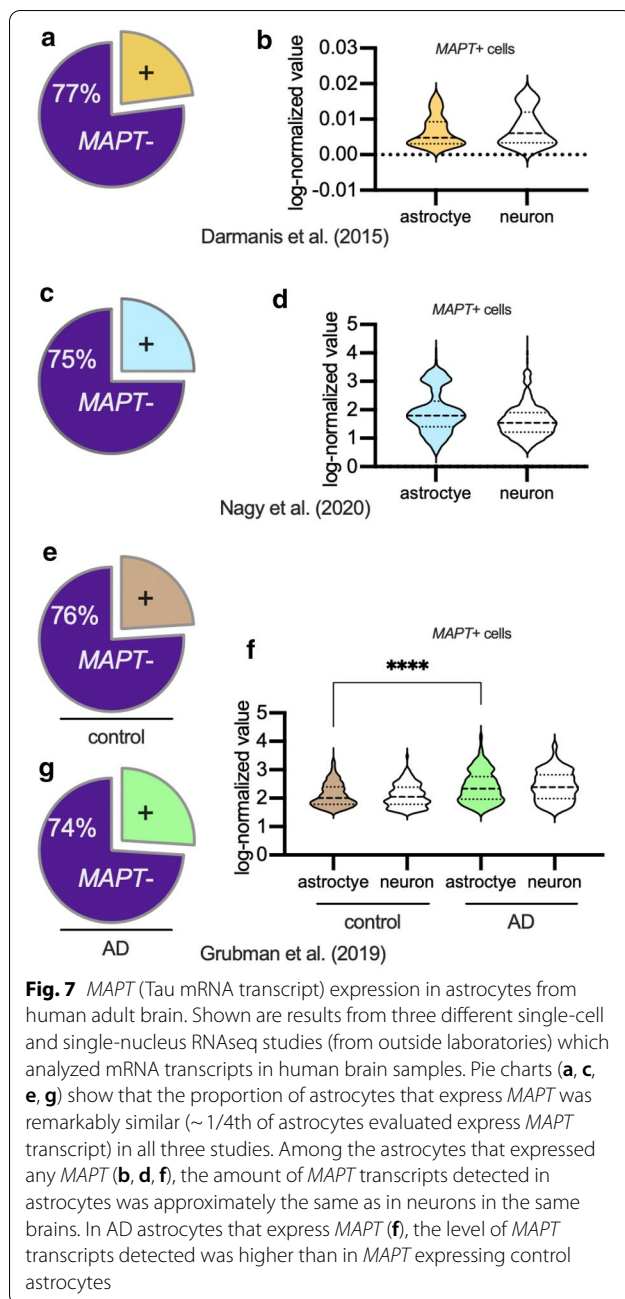
ARTAG-NC may include three populations of border-associated astrocytes, as well as protoplasmic gray matter and fibrous white matter astrocytes (Fig. 5). The astrocytes' morphologic appearance defines the cells as TSA and GFA. In CTE and in response to brain injury, much of the ARTAG-NC is TSA. However, a different picture may be seen in neurodegenerative disease. Notably, individuals defined as healthy controls lacked gray matter

ARTAG-NC, while 32% of AD/PART cases and 37% of Lewy body dementia cases had gray matter ARTAG-NC [60]. These results do not rule out the involvement of brain trauma as a contributor to ARTAG-NC. They do suggest that there may be heterogeneity among ARTAG subtypes, and it is important to consider differences in location and type of ARTAG-NC found.

As shown in Fig. 5, TSAs may be found in three border region-associated astrocytes, and some of the morphological features are shared across the different anatomical regions. This includes the TSA astrocytes at the subpial (Figs. 3b, 5b) and subependymal border (Fig. 5c). In these locations, the astrocyte processes of the TSAs reach the outer surface of the brain (Fig. 5b) or the central ependyma lining the ventricles (Fig. 5c). The subpial TSAs are likely marginal astrocytes, also known as interlaminar astrocytes. These are a relatively poorly studied population of specialized glia that form layers of endfeet at the pial surface, thus forming the glia limitans in the brain-meninges border. In humans, these marginal astrocytes send long, thin projections into the deeper cortical layers terminating in cortical layers II through IV [61]. Subpial TSAs are most often found in the cerebral cortical lobes, amygdala, hippocampus, basal forebrain, lateral midbrain, pons, medulla oblongata, and into the spinal cord [60]. Subependymal TSAs are seen in the third ventricle, the inferior horn of the lateral ventricle, aqueduct of the midbrain and medulla oblongata, and rarely in the anterior and posterior horn of the lateral ventricle [60].

The third border-associated ARTAG-vulnerable astrocytes are perivascular (Fig. 5d). The perivascular TSAs can be seen near the subpial surface, or in gray (Fig. 3e) or white matter (Fig. 3c) [60]. Subpial, subependymal, and perivascular astrocytes maintain blood-brain and brain-CSF-blood barriers, and regulate glymphatic flow [18]. If perivascular ARTAG-NC was abundant in the venous compartment, this could suggest a role in the movement of CSF and drainage out of the brain, whereas, if the perivascular ARTAG-NC was extensively in the arterial compartment, this could impact cerebral blood flow autoregulation. We identified ARTAG-NC surrounding Virchow-Robin spaces of arterioles (Fig. 4b) and surrounding capillaries in the cortex (Fig. 3d). Prior studies emphasized that ARTAG-NC can be found in the arterial compartment [41, 60]. More work is needed to evaluate ARTAG-NC associated with different cerebral vascular segments quantitatively, and if trauma versus neurodegenerative pathology causes a different vascular localization pattern.

White matter is another compartment where TSAs are found in ARTAG (Figs. 5e, 6). The white matter of the medial temporal lobe has the highest likelihood of TSA,



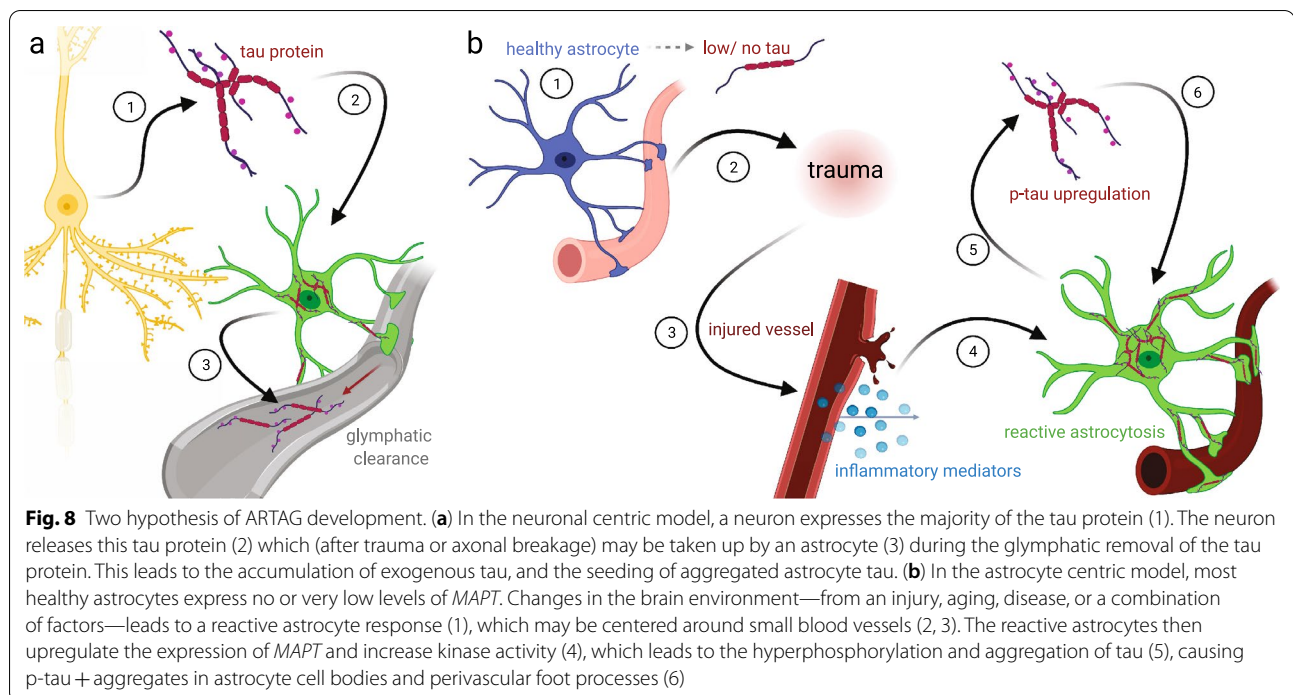
whereas the occipital lobe is the least likely [62]. Interestingly, the white matter of the corpus callosum, internal capsule, or cerebellar peduncles tend to be unaffected by ARTAG-NC [60]. The physiology of white matter fibrous astrocytes are poorly understood in healthy and disease states. By morphology, the fibrous astrocytes of the white matter have fewer branches than the gray matter astrocytes. The fibrous astrocytes align radially in the direction of the axonal tracks. These astrocytes also lack the tiling properties of gray matter astrocytes [61].

GFAs found in the gray matter are present most often in the amygdala, basal ganglia, cortex, and brainstem [63] (Fig. 5f). As the name suggests, GFAs have a fine granular appearance by p-tau-immunostaining, that appears to fill the cytoplasm of the protoplasmic astrocytes in the gray matter. GFAs have been found to be the most prevalent type of ARTAG-NC [54]. Further clues suggest that gray matter GFAs could be one of the earliest pathological changes associated with ARTAG-NC [54, 60, 62]. In our cases, GFAs were not widely observed in the cortical gray matter (Fig. 3d), suggesting that TSAs may be more specific to trauma, while GFAs could be associated with neurodegenerative pathology.

Tau expression and protein modifications relevant to ARTAG

Little is known about tau expression (either transcription, or translation from mRNA) within human astrocytes. Via tubulin-binding domains, tau proteins may interact with microtubules, which are certainly present in astrocytes. Yet as far as we know, non-phosphorylated tau protein has not been visualized in quiescent astrocytes.

At least three studies reported single-cell or single-nuclei RNAseq data on human brain tissue suitable for studying *MAPT* transcripts in astrocytes. Their results were highly similar with each other in some important ways (Fig. 7). The first study conducted single-cell RNAseq on adult temporal cortex from individuals undergoing surgery for refractory seizures [64] (Fig. 7a, b). Using the authors' cell type clusters, most astrocytes (77%) had low or nearly undetectable levels of *MAPT*. In comparison, 37% of neurons and 61% of oligodendrocytes had low or nearly undetectable levels of *MAPT*. On average, astrocytes expressed 67% less *MAPT* than neurons. Approximately a quarter of astrocytes express *MAPT* transcripts, and, notably, this population(s) of astrocytes express *MAPT* at similar levels to that of neurons. The second study completed single-nucleus RNAseq from the postmortem prefrontal cortex of 17 healthy control males as part of a study on major depressive disorder [65] (Fig. 7c, d). In these individuals, 75% of astrocytes expressed no *MAPT*. Yet, the astrocytes that did express *MAPT* again did so at comparable levels to neurons. The third study performed single-nucleus RNA sequencing from the postmortem entorhinal cortex of six AD patients and six sex- and age-matched controls [66] (Fig. 7e–g). Once again, approximately 3/4th of the astrocytes did not express *MAPT*. Similarly, in the AD brain, 74% of the astrocytes did not express *MAPT*. In the astrocytes that did express *MAPT* transcripts, there was a significant ($p < 0.001$) increase in *MAPT* expression in the AD cases compared to control cases.



The single-cell and single-nucleus RNAseq studies were not informative about how the spatial localization of the astrocytes corresponded with *MAPT* expression. We also do not know if astrocytes upregulate *MAPT* when they become reactive. Neurodegenerative disease can increase astrocytic *MAPT* expression, suggesting that reactive astrogliosis could lead to astrocytes making more tau. However, the proportion of astrocytes that expressed *MAPT* didn't increase with AD, indicating heterogeneity in astrocytes throughout healthy and diseased states. In summary, much remains unknown about *MAPT* expression in astrocytes including the basis for spatial heterogeneity of the *MAPT* expression.

Phosphorylation of tau is a widely studied tau post-translational modification, and the pattern of phospho-specific epitopes expressed by ARTAG cells has been characterized [29, 43, 67]. Reactive astrocytes increase expression of some kinases [68, 69]. For instance, the mitogen-activated protein kinase (MAPK) are activated by stress, damage associated molecular patterns, and cytokines, and are known to be important pathways driving neuroinflammation and glial activation [70]. The MAPKs, among others, can also phosphorylate tau. TSAs were positive for the active (phosphorylated) form for all three MAPK pathways (ERK, JNK, p38), as well as GSK3B [29]. Ferrer et al. [67] completed phosphoproteomics on three control brain samples and three ARTAG brain samples. Interestingly, GFAP and aquaporin 4 were highly phosphorylated. They also found additional evidence for MAPK and cyclin-dependent kinases (CDKs)

involvement from the phosphoproteomics [67]. These two studies imply that astrocyte activation may be driving high kinase activity in the astrocytes. This could be stimulating neuroinflammation, as well as phosphorylating tau. However, it has not yet been shown if the p-tau+ astrocytes express more kinase activity than the p-tau-astrocytes in brains with ARTAG-NC.

While they may be in some senses “reactive” to local tissue injury or insult, p-tau+ astrocytes have less GFAP staining and are smaller than p-tau-astrocytes from healthy control brains; they also appear to be misshapen [67]. Schwab et al. [71] explored a link between TBI and markers of cellular senescence in astrocytes. Specifically, they asked if a history of repetitive TBI increased γ H2AX, a marker of double strand DNA breaks, in astrocytes. The increase in γ H2AX was found in ependymal and subependymal cells and subpial astrocytes. This study did not specifically evaluate ARTAG, however [71]. While evaluation of white matter TSAs found the cells negative for ubiquitin, p62, beta-amyloid, and alpha-synuclein [29], perhaps suggesting that the astrocytopathy seen was due specifically to tau misfolding. Of note, the p-tau+ astrocytes did express superoxide dismutase 2 (SOD2), and it was suggested that the SOD2 may be a cellular senescence marker [29]. It is unclear whether SOD2 expression contributed to or was a downstream effect of abnormal tau inclusions in TSAs.

Another theme that emerges from human phenomenology is the presence of glial tau inclusions at border regions between micro-domains and at connection

points between cells. The molecular underpinnings of these observations are mostly unknown. Kovacs et al. evaluated glial aquaporin-4 and Connexin-43 in ARTAG cases [72]. Aquaporin-4 is a water-channel protein, expressed at astrocyte “endfeet,” which plays an important role in glymphatic function in the CNS [18]. Connexin-43 is a major gap junction protein expressed by astrocytes [73]. In areas with high astrocyte p-tau staining, connexin-43 and aquaporin-4 staining was increased or remain highly expressed [72]. The study did not specifically test whether the cellular localizations of connexin-43, and aquaporin-4 was altered. Overexpression and mis-localization of the proteins away from astrocytic endfeet might alter the physiological function of these proteins [18]. Further evaluation of these proteins and other endfeet proteins in ARTAG–NC is warranted.

Pathologic mechanisms

Some of the potential disease-driving paradigms linked to ARTAG–NC derive from prior studies focusing on neuronal tau pathology. A growing body of evidence demonstrates that tau paired helical filaments (PHF) can promote further aggregation of tau in an amplifying, feed-forward mechanism similar to, or at least analogous to, prion diseases. In the nucleation-elongation mechanism, PHF tau “seeds” placed into the brain can initiate and accelerate more tau aggregation in an auto-propagating manner [27, 74]. This mechanism was supported experimentally using *in vitro* assays initially, but numerous studies have now demonstrated that preformed aggregated tau or human diseased brain extracts can accelerate tau aggregation in various animal models [75–77]. Here we focus on the studies most relevant to ARTAG–NC.

Tau seeds have been isolated from human brains with multiple tauopathies, including glial tauopathies. When injected into a mouse brain, tau seeds lead to trans-synaptic pathologic spreading that maintains the disease’s tau strain identity. For instance, AD tau extracts will seed neuronal tau, whereas PSP or CBD (human diseases with abundant glial tauopathy) brain extracts will seed glial tau [78]. In addition to the cell type specificity, the tau isoform from the diseased donor, be it 3R or 4R tau, were recapitulated in the recipient mouse: brain extracts from AD cases seeded 3R and 4R tau, while PSP and CBD brain extracts seeded 4R tau, and PiD seeded 3R tau [78, 79]. These studies showed that there are disease-specific, cell type-specific, and, to some extent, isoform-specific mechanisms underlying tau seeds.

Narasimhan et al. [80] asked if the formation of glia tau required neuronal tau. Using mice with a neuronal-specific deletion of *MAPT*, they tested if CBD-tau or PSP-tau could induce glial tauopathy. They found that

CBD-tau injected mice had tufted astrocytes, and the PSP-tau injected mice had coiled body inclusions in oligodendrocytes [80]. This underscores that glia can form tau inclusions in the absence of neuronal-sourced tau. This study did not generate an astrocyte-specific *MAPT* knockout mouse to show that the aggregated tau was from endogenous astrocyte tau as opposed to some other cellular source.

Ferrer et al. [67] found evidence that ARTAG–NC derived tau seeds were unlike seeds sourced from other diseases, in that they did not maintain the disease phenotype. In this study, ARTAG–NC tau brain extracts injected in the mice resulted in p-tau in neurons, astrocytes, and oligodendrocytes. The tau did not maintain the 4R specificity, as the ARTAG–NC tau brain extracts seeded both 3R and 4R tau [67]. As ADNC is a common comorbidity with ARTAG–NC, there remains the possibility that the ARTAG–NC tau samples also contained some ADNC tau, and that the latter was biologically active in tau seeding experiments.

The mechanisms leading to ARTAG are poorly understood. However, our review of the literature suggests two hypothetical models that are not mutually exclusive. In the first model, neuronal injury causes the release of tau protein seeds, which accumulate in astrocytes instead of (or perhaps while) being cleared from the brain (Fig. 8a) [3, 40]. This model assumes that the ARTAG–NC astrocytic p-tau is primarily of neuronal origin. As discussed above, ARTAG–NC is commonly seen in CNS border zones that are important for glymphatic removal of waste [3]. Hence astrocytes may take up tau released from cells, and the tau aggregates present in astrocytes may represent ingested remnants. A weakness of this hypothesis is that it does not explain why ARTAG tau pathology is exclusively composed of 4R tau.

A second hypothetical model proposes that brain injury, in combination with age, lead to a transformation of astrocytes in ways that promote ARTAG–NC. In this model (Fig. 8b), when astrocytes become reactive, they increase their expression of *MAPT* and have high kinase activity. It is also possible that non-translated *MAPT* mRNA could be translated in times of stress. The increase in tau and high kinase activity cause hyperphosphorylation and aggregation of tau within tau+ astrocytes. This model assumes that astrocytes—or at least a subset of astrocytes—make their own tau. As discussed above, ~25% of the astrocytes in the human brain express *MAPT* transcripts according to RNAseq experiments. In brains with neurodegenerative disease, astrocytes that express *MAPT* do so at higher levels than control brain astrocytes [66]. Moreover, there are many brains with ARTAG–NC that lack substantial neuronal tau pathology. Even in Case #2 in the present paper, we note that

the minimal tau pathology observed was in glial appearing cells, within subependymal and perivascular microdomains. It is intriguing that this person, despite a very long-term lesion in the brain, albeit causing only mild mechanical stress, had minimal ARTAG–NC but also had undergone long-term treatment with strong anti-inflammatory drugs, given the possible role(s) played by inflammatory mediators in tauopathy. However, the complex medical histories of both these individuals underscore the challenges of direct cause/effect inferences that can be derived from human studies.

The limited number of astrocytes expressing *MAPT* could help explain the selective vulnerability of specific populations of astrocytes to ARTAG–NC and the patchy nature of ARTAG–NC. With chronological age, astrocyte morphology and molecular signatures are altered compared to young healthy brains, and astrocytes in aged brain respond differently to a TBI than astrocytes in young brains [20]. Further studies are required to explore the astrocyte subpopulations that express *MAPT* and their responses to brain injury.

We conclude that long-term space occupying lesions that impose chronic mechanical stress on the brain (in the examples described here, arachnoid cysts) may contribute to the development of ARTAG–NC in a stress dose-dependent manner. That is, while both cases demonstrate ARTAG–NC changes, Case #2 with less destructive mechanical stress was associated with mild and localized ARTAG–NC changes, whereas Case #1 with a more severe mechanical stress injury was associated with widespread and severe ARTAG–NC changes. In this manner, the case reports presented and the literature review suggest that CNS trauma (chronic or acute mechanical stress) can drive ARTAG–NC-like pathology. The lesions' morphologies and locations suggest that the ARTAG–NC-like brain changes following injury from mechanical stressors differs from that seen with neurodegenerative diseases. More work is required to test models of ARTAG–NC development and the possible interaction of seeding and tau aggregation models. Future work will also be needed to understand the normal physiological function of tau phosphorylation in astrocytes (if any), and how ARTAG–NC changes astrocyte physiology. As we learn more about ARTAG, we will gain a greater understanding of how astrocytes contribute to the long term sequelae of CNS trauma and age-related cognitive decline.

Abbreviations

ADNC: Alzheimer's disease (AD) and neuropathologic changes; ARTAG–NC: Aging-related tau astrogliopathy (ARTAG) and neuropathological changes; AP: Astrocytic plaques; CBD: Corticobasal degeneration; CDKs: Cyclin-dependent kinases; CTE–NC: Chronic traumatic encephalopathy (CTE) and neuropathological changes; CT: Computerized tomography; GFAP: Glial fibrillary acidic

protein; GAI: Globular astroglial inclusions; GGT: Globular glial tauopathies; GFA: Granular-fuzzy astrocytes; LBD: Lewy body dementia; *MAPT*: Microtubule associated protein tau; MAPK: Mitogen-activated protein kinase; PHF: Paired helical filaments; PART: Primary age-related tauopathy; PiD: Pick's disease; PSP: Progressive supranuclear palsy; p-tau: Phosphorylated tau protein; RA: Ramified astrocytes; SOD2: Superoxide dismutase 2; TBI: Traumatic brain injury; TSA: Thorn-shaped astrocytes.

Acknowledgements

We are profoundly grateful to all of the study participants and clinical colleagues and staff at the U. Kentucky ADRC. We would like to thank Colleen N. Bodnar and Ryan K. Shahidehpour for their thoughtful comments during the development of the literature review. Thanks to Justin M. Barber for assistance with clinical information and imaging. Thanks to Dr. Karin B. Nelson for editing the manuscript and to Ela Patel for her contribution to the immunohistochemical staining. Some illustrations were created using BioRender.com. The sn/scRNA-seq data was analyzed with BBrowser version 2.7.5 (singleCell)

Authors' contributions

ADB completed the literature review and wrote the first draft. FGG contributed to the pathologic diagnoses, case selection, data interpretation, drafting the case reports and revising the manuscript for intellectual content. PTN contributed to the design and conceptualization of the study, pathologic diagnoses, case selection, data interpretation and revising the manuscript for intellectual content. GAJ assisted with clinical data acquisition for Case #1, data interpretation, and revising the manuscript for intellectual content. All authors read and approved the final manuscript.

Funding

This publication was supported in part by National Institutes of Health under Award Numbers P30 AG028383, R21AG066865, R21AG059123, R01AG068215, R01NS103785, and the Department of Defense award number AZ190017. The content is solely the responsibility of the authors and does not represent the official views of the National Institutes of Health or the Department of Defense.

Availability of data and materials

All data generated or analyzed during this study are included in this published article.

Declarations

Ethics approval and consent to participate

Valid and appropriately consent forms were approved by the U. Kentucky Institutional Review Board and obtained for each patient. These will be provided on request by the Editor.

Competing interests

The authors declare that they have no competing interests.

Author details

¹ Spinal Cord and Brain Injury Research Center, University of Kentucky, 741 S. Limestone St., Lexington, KY 40536, USA. ² Department of Neuroscience, University of Kentucky, Lexington, KY, USA. ³ Sanders-Brown Center on Aging, University of Kentucky, Lexington, KY, USA. ⁴ Department of Pathology and Laboratory Medicine, University of Kentucky, Lexington, KY, USA. ⁵ Department of Neurology, University of Kentucky, Lexington, KY, USA.

Received: 12 January 2021 Accepted: 8 March 2021

Published online: 23 March 2021

References

1. Arena JD, Johnson VE, Lee EB, Gibbons GS, Smith DH, Trojanowski JQ, Stewart W (2020) Astroglial tau pathology alone preferentially concentrates at sulcal depths in chronic traumatic encephalopathy neuropathologic change. *Brain Commun* 2(2):210
2. McKee AC (2020) The neuropathology of chronic traumatic encephalopathy: the status of the literature. *Semin Neurol* 40(04):359–369

3. Shively SB, Edgerton SL, Iacono D, Purohit DP, Qu BX, Haroutunian V, Davis KL, Diaz-Arrastia R, Perl DP (2017) Localized cortical chronic traumatic encephalopathy pathology after single, severe axonal injury in human brain. *Acta Neuropathol* 133(3):353–366
4. Rabiei K, Tisell M, Wikkelo C, Johansson BR (2014) Diverse arachnoid cyst morphology indicates different pathophysiological origins. *Fluids Barriers CNS* 11(1):5
5. Choi JU, Kim DS (1998) Pathogenesis of arachnoid cyst: congenital or traumatic? *Pediatr Neurosurg* 29(5):260–266
6. Rabiei K, Jaraj D, Marlow T, Jensen C, Skoog I, Wikkelo C (2016) Prevalence and symptoms of intracranial arachnoid cysts: a population-based study. *J Neurol* 263(4):689–694
7. Katzman GL, Dagher AP, Patronas NJ (1999) Incidental findings on brain magnetic resonance imaging from 1000 asymptomatic volunteers. *JAMA* 282(1):36–39
8. Nelson PT, Dickson DW, Trojanowski JQ, Jack CR, Boyle PA, Arfanakis K, Rademakers R, Alafuzoff I, Attems J, Brayne C et al (2019) Limbic-predominant age-related TDP-43 encephalopathy (LATE): consensus working group report. *Brain* 142(6):1503–1527
9. Montine TJ, Phelps CH, Beach TG, Bigio EH, Cairns NJ, Dickson DW, Duyckaerts C, Frosch MP, Masliah E, Mirra SS et al (2012) National Institute on Aging-Alzheimer's Association guidelines for the neuropathologic assessment of Alzheimer's disease: a practical approach. *Acta Neuropathol* 123(1):1–11
10. Schmitt FA, Nelson PT, Abner E, Scheff S, Jicha GA, Smith C, Cooper G, Mendiondo M, Danner DD, Van Eldik LJ et al (2012) University of Kentucky Sanders-Brown healthy brain aging volunteers: donor characteristics, procedures and neuropathology. *Curr Alzheimer Res* 9(6):724–733
11. Greenberg SG, Davies P, Schein JD, Binder LI (1992) Hydrofluoric acid-treated tau PHF proteins display the same biochemical properties as normal tau. *J Biol Chem* 267(1):564–569
12. Attwell D, Buchan AM, Charpak S, Lauritzen M, Macvicar BA, Newman EA (2010) Glial and neuronal control of brain blood flow. *Nature* 468(7321):232–243
13. Belanger M, Allaman I, Magistretti PJ (2011) Brain energy metabolism: focus on astrocyte-neuron metabolic cooperation. *Cell Metab* 14(6):724–738
14. Clarke LE, Barres BA (2013) Emerging roles of astrocytes in neural circuit development. *Nat Rev Neurosci* 14(5):311–321
15. Linnerbauer M, Rothhammer V (2020) Protective functions of reactive astrocytes following central nervous system insult. *Front Immunol* 11:573256
16. Linnerbauer M, Wheeler MA, Quintana FJ (2020) Astrocyte crosstalk in CNS inflammation. *Neuron* 108(4):608–622
17. Sofroniew MV (2015) Astrocyte barriers to neurotoxic inflammation. *Nat Rev Neurosci* 16(5):249–263
18. Nedergaard M, Goldman SA (2020) Glymphatic failure as a final common pathway to dementia. *Science* 370(6512):50–56
19. Izrael M, Slutsky SG, Revel M (2020) Rising stars: astrocytes as a therapeutic target for ALS disease. *Front Neurosci* 14:824
20. Early AN, Gorman AA, Van Eldik LJ, Bachstetter AD, Morganti JM (2020) Effects of advanced age upon astrocyte-specific responses to acute traumatic brain injury in mice. *J Neuroinflamm* 17(1):115
21. Furman JL, Sama DM, Gant JC, Beckett TL, Murphy MP, Bachstetter AD, Van Eldik LJ, Norris CM (2012) Targeting astrocytes ameliorates neurologic changes in a mouse model of Alzheimer's disease. *J Neurosci* 32(46):16129–16140
22. Pekny M, Pekna M, Messing A, Steinhilber C, Lee JM, Pappas V, Hol EM, Sofroniew MV, Verkhratsky A (2016) Astrocytes: a central element in neurological diseases. *Acta Neuropathol* 131(3):323–345
23. Walker AK, Daniels C, Goldman JE, Trojanowski JQ, Lee VM, Messing A (2014) Astrocytic TDP-43 pathology in Alexander disease. *J Neurosci* 34(19):6448–6458
24. Colnaghi L, Rondelli D, Muzi-Falconi M, Sertic S (2020) Tau and DNA damage in neurodegeneration. *Brain Sci* 10(12):946
25. Brandt R, Trushina NI, Bakota L (2020) Much more than a cytoskeletal protein: physiological and pathological functions of the non-microtubule binding region of tau. *Front Neurol* 11:590059
26. Kent SA, Spiers-Jones TL, Durrant CS (2020) The physiological roles of tau and Aβeta: implications for Alzheimer's disease pathology and therapeutics. *Acta Neuropathol* 140(4):417–447
27. Wang Y, Mandelkow E (2016) Tau in physiology and pathology. *Nat Rev Neurosci* 17(1):5–21
28. Goedert M, Spillantini MG, Jakes R, Rutherford D, Crowther RA (1989) Multiple isoforms of human microtubule-associated protein tau: sequences and localization in neurofibrillary tangles of Alzheimer's disease. *Neuron* 3(4):519–526
29. Lopez-Gonzalez I, Carmona M, Blanco R, Luna-Munoz J, Martinez-Mandonado A, Mena R, Ferrer I (2013) Characterization of thorn-shaped astrocytes in white matter of temporal lobe in Alzheimer's disease brains. *Brain Pathol* 23(2):144–153
30. Okamoto K, Amari M, Fukuda T, Suzuki K, Takatama M (2019) Astrocytic tau pathologies in aged human brain. *Neuropathology* 39(3):187–193
31. Bachstetter AD, Morganti JM, Bodnar CN, Webster SJ, Higgins EK, Roberts KN, Snider H, Meier SE, Nation GK, Goulding DS et al (2020) The effects of mild closed head injuries on tauopathy and cognitive deficits in rodents: primary results in wild type and rTg4510 mice, and a systematic review. *Exp Neurol* 326:113180
32. Braak H, Thal DR, Ghebremedhin E, Del Tredici K (2011) Stages of the pathological process in Alzheimer disease: age categories from 1 to 100 years. *J Neuropathol Exp Neurol* 70(11):960–969
33. Hiskens MI, Angoa-Perez M, Schneiders AG, Vella RK, Fenning AS (2019) Modeling sports-related mild traumatic brain injury in animals—a systematic review. *J Neurosci Res* 97(10):1194–1222
34. Risling M, Smith D, Stein TD, Thelin EP, Zanier ER, Ankarcona M, Nilsson P (2019) Modelling human pathology of traumatic brain injury in animal models. *J Intern Med* 285(6):594–607
35. Sidoryk-Wegrzynowicz M, Gerber YN, Ries M, Sastre M, Tolkovsky AM, Spillantini MG (2017) Astrocytes in mouse models of tauopathies acquire early deficits and lose neurosupportive functions. *Acta Neuropathol Commun* 5(1):89
36. Nelson PT, Stefansson K, Gulcher J, Saper CB (1996) Molecular evolution of tau protein: implications for Alzheimer's disease. *J Neurochem* 67(4):1622–1632
37. Omalu BI, DeKosky ST, Hamilton RL, Minster RL, Kamboh MI, Shafir AM, Wecht CH (2006) Chronic traumatic encephalopathy in a national football league player: part II. *Neurosurgery* 59(5):1086–1092 (**discussion 1092–1083**)
38. Omalu BI, DeKosky ST, Minster RL, Kamboh MI, Hamilton RL, Wecht CH (2005) Chronic traumatic encephalopathy in a National Football League player. *Neurosurgery* 57(1):128–134 (**discussion 128–134**)
39. McKee AC, Cairns NJ, Dickson DW, Folkerth RD, Keene CD, Litvan I, Perl DP, Stein TD, Vonsattel JP, Stewart W et al (2016) The first NINDS/NIBIB consensus meeting to define neuropathological criteria for the diagnosis of chronic traumatic encephalopathy. *Acta Neuropathol* 131(1):75–86
40. McKee AC, Stein TD, Nowinski CJ, Stern RA, Daneshvar DH, Alvarez VE, Lee HS, Hall G, Wojtowicz SM, Baugh CM et al (2013) The spectrum of disease in chronic traumatic encephalopathy. *Brain* 136:43–64
41. Kovacs GG (2020) Astroglia and tau: new perspectives. *Front Aging Neurosci* 12:96
42. Kovacs GG (2015) Neuropathology of tauopathies: principles and practice. *Neuropathol Appl Neurobiol* 41(1):3–23
43. Arena JD, Smith DH, Lee EB, Gibbons GS, Irwin DJ, Robinson JL, Lee VM, Trojanowski JQ, Stewart W, Johnson VE (2020) Tau immunophenotypes in chronic traumatic encephalopathy recapitulate those of ageing and Alzheimer's disease. *Brain* 143(5):1572–1587
44. Smith DH, Johnson VE, Trojanowski JQ, Stewart W (2019) Chronic traumatic encephalopathy—confusion and controversies. *Nat Rev Neurol* 15(3):179–183
45. Tribett T, Erskine B, Bailey K, Brown T, Castellani RJ (2019) Chronic traumatic encephalopathy pathology after shotgun injury to the brain. *J Forensic Sci* 64(4):1248–1252
46. Mendez MF (2017) What is the relationship of traumatic brain injury to dementia? *J Alzheimers Dis* 57(3):667–681
47. Smith DH, Nakamura M, McIntosh TK, Wang J, Rodriguez A, Chen XH, Raghupathi R, Saatman KE, Clemens J, Schmidt ML et al (1998) Brain trauma induces massive hippocampal neuron death linked to a surge in beta-amyloid levels in mice overexpressing mutant amyloid precursor protein. *Am J Pathol* 153(3):1005–1010
48. Cherry JD, Kim SH, Stein TD, Pothast MJ, Nicks R, Meng GY, Huber BR, Mez J, Alosco ML, Tripodis Y et al (2020) Evolution of neuronal and glial tau isoforms in chronic traumatic encephalopathy. *Brain Pathol* 30(5):913–925

49. Ling HL, Holton JL, Shaw K, Davey K, Lashley T, Revesz T (2015) Histological evidence of chronic traumatic encephalopathy in a large series of neurodegenerative diseases. *Acta Neuropathol* 130(6):891–893
50. Puvenna V, Engeler M, Banjara M, Brennan C, Schreiber P, Dadas A, Bahrami A, Solanki J, Bandyopadhyay A, Morris JK et al (2016) Is phosphorylated tau unique to chronic traumatic encephalopathy? Phosphorylated tau in epileptic brain and chronic traumatic encephalopathy. *Brain Res* 1630:225–240
51. Iverson GL, Luoto TM, Karhunen PJ, Castellani RJ (2019) Mild chronic traumatic encephalopathy neuropathology in people with no known participation in contact sports or history of repetitive neurotrauma. *J Neuropathol Exp Neurol* 78(7):615–625
52. Noy S, Krawitz S, Del Bigio MR (2016) Chronic traumatic encephalopathy-like abnormalities in a routine neuropathology service. *J Neuropathol Exp Neurol* 75(12):1145–1154
53. Koga S, Dickson DW, Bieniek KF (2016) Chronic traumatic encephalopathy pathology in multiple system atrophy. *J Neuropathol Exp Neurol* 75(10):963–970
54. Forrest SL, Kril JJ, Wagner S, Honigschnabl S, Reiner A, Fischer P, Kovacs GG (2019) Chronic traumatic encephalopathy (CTE) is absent from a European community-based aging cohort while cortical aging-related tau astrogliopathy (ARTAG) is highly prevalent. *J Neuropathol Exp Neurol* 78(5):398–405
55. Nolan A, Resende EDF, Petersen C, Neylan K, Spina S, Huang E, Seeley W, Miller Z, Grinberg LT (2019) astrocytic tau deposition is frequent in typical and atypical Alzheimer disease presentations. *J Neuropathol Exp Neurol* 78(12):1112–1123
56. Resende EDF, Nolan AL, Petersen C, Ehrenberg AJ, Spina S, Allen IE, Rosen HJ, Kramer J, Miller BL, Seeley WW et al (2020) Language and spatial dysfunction in Alzheimer disease with white matter thorn-shaped astrocytes. *Neurology* 94(13):E1353–E1364
57. Robinson JL, Corrada MM, Kovacs GG, Dominique M, Caswell C, Xie SX, Lee VM, Kawas CH, Trojanowski JQ (2018) Non-Alzheimer's contributions to dementia and cognitive resilience in The 90+ study. *Acta Neuropathol* 136(3):377–388
58. Okamura Y, Kawakami I, Watanabe K, Oshima K, Niizato K, Ikeda K, Akiyama H, Hasegawa M (2019) Tau progression in single severe frontal traumatic brain injury in human brains. *J Neurol Sci* 407:116495
59. Reid MJ, Beltran-Lobo P, Johnson L, Perez-Nievas BG, Noble W (2020) Astrocytes in tauopathies. *Front Neurol* 11:572850
60. Kovacs GG, Robinson JL, Xie SX, Lee EB, Grossman M, Wolk DA, Irwin DJ, Weintraub D, Kim CF, Schuck T et al (2017) Evaluating the patterns of aging-related tau astrogliopathy unravels novel insights into brain aging and neurodegenerative diseases. *J Neuropathol Exp Neurol* 76(4):270–288
61. Oberheim NA, Takano T, Han X, He W, Lin JH, Wang F, Xu Q, Wyatt JD, Pilcher W, Ojemann JG et al (2009) Uniquely hominid features of adult human astrocytes. *J Neurosci* 29(10):3276–3287
62. Kovacs GG, Xie SX, Robinson JL, Lee EB, Smith DH, Schuck T, Lee VMY, Trojanowski JQ (2018) Sequential stages and distribution patterns of aging-related tau astrogliopathy (ARTAG) in the human brain. *Acta Neuropathol Commun* 6:50
63. Kovacs GG, Ferrer I, Grinberg LT, Alafuzoff I, Attems J, Budka H, Cairns NJ, Cray JF, Duyckaerts C, Ghetti B et al (2016) Aging-related tau astrogliopathy (ARTAG): harmonized evaluation strategy. *Acta Neuropathol* 131(1):87–102
64. Darmanis S, Sloan SA, Zhang Y, Enge M, Caneda C, Shuer LM, Hayden Gephart MG, Barres BA, Quake SR (2015) A survey of human brain transcriptome diversity at the single cell level. *Proc Natl Acad Sci USA* 112(23):7285–7290
65. Nagy C, Maitra M, Tanti A, Suderman M, Theroux JF, Davoli MA, Perlman K, Yerko V, Wang YC, Tripathy SJ et al (2020) Single-nucleus transcriptomics of the prefrontal cortex in major depressive disorder implicates oligodendrocyte precursor cells and excitatory neurons. *Nat Neurosci* 23(6):771–781
66. Grubman A, Chew G, Ouyang JF, Sun G, Choo XY, McLean C, Simmons RK, Buckberry S, Vargas-Landin DB, Poppe D et al (2019) A single-cell atlas of entorhinal cortex from individuals with Alzheimer's disease reveals cell-type-specific gene expression regulation. *Nat Neurosci* 22(12):2087–2097
67. Ferrer I, Garcia MA, Gonzalez IL, Lucena DD, Villalonga AR, Tech MC, Llorrens F, Garcia-Esparcia P, Martinez-Maldonado A, Mendez MF et al (2018) Aging-related tau astrogliopathy (ARTAG): not only tau phosphorylation in astrocytes. *Brain Pathol* 28(6):965–985
68. Kraner SD, Norris CM (2018) Astrocyte Activation And The Calcineurin/NFAT pathway in cerebrovascular disease. *Front Aging Neurosci* 10:287
69. Furman JL, Norris CM (2014) Calcineurin and glial signaling: neuroinflammation and beyond. *J Neuroinflamm* 11:158
70. Bachstetter AD, Van Eldik LJ (2010) The p38 MAP kinase family as regulators of proinflammatory cytokine production in degenerative diseases of the CNS. *Aging Dis* 1(3):199–211
71. Schwab N, Grenier K, Hazrati LN (2019) DNA repair deficiency and senescence in concussed professional athletes involved in contact sports. *Acta Neuropathol Commun* 7(1):182
72. Kovacs GG, Yousef A, Kaindl S, Lee VM, Trojanowski JQ (2018) Connexin-43 and aquaporin-4 are markers of ageing-related tau astrogliopathy (ARTAG)-related astroglial response. *Neuropathol Appl Neurobiol* 44(5):491–505
73. Scemes ES, Spray DC (2009) Connexin expression (gap junctions and hemichannels) in astrocytes. In: Haydon PP, Pappas V (eds) *Astrocytes in (patho)physiology of the nervous system*. Springer, pp 107–150
74. von Bergen M, Friedhoff P, Biernat J, Heberle J, Mandelkow EM, Mandelkow E (2000) Assembly of tau protein into Alzheimer paired helical filaments depends on a local sequence motif ((306)VQIVYK(311)) forming beta structure. *Proc Natl Acad Sci USA* 97(10):5129–5134
75. Gibbons GS, Lee VMY, Trojanowski JQ (2019) Mechanisms of cell-to-cell transmission of pathological tau: a review. *JAMA Neurol* 76(1):101–108
76. Gibbons GS, Kim SJ, Wu Q, Riddle DM, Leight SN, Changolkar L, Xu H, Meymand ES, O'Reilly M, Zhang B et al (2020) Conformation-selective tau monoclonal antibodies inhibit tau pathology in primary neurons and a mouse model of Alzheimer's disease. *Mol Neurodegener* 15(1):64
77. McAllister BB, Lacoursiere SG, Sutherland RJ, Mohajerani MH (2020) Intracerebral seeding of amyloid-beta and tau pathology in mice: factors underlying prion-like spreading and comparisons with alpha-synuclein. *Neurosci Biobehav Rev* 112:1–27
78. He Z, McBride JD, Xu H, Changolkar L, Kim SJ, Zhang B, Narasimhan S, Gibbons GS, Guo JL, Kozak M et al (2020) Transmission of tauopathy strains is independent of their isoform composition. *Nat Commun* 11(1):7
79. Narasimhan S, Guo JL, Changolkar L, Stieber A, McBride JD, Silva LV, He Z, Zhang B, Gathagan RJ, Trojanowski JQ et al (2017) Pathological tau strains from human brains recapitulate the diversity of tauopathies in nontransgenic mouse brain. *J Neurosci* 37(47):11406–11423
80. Narasimhan S, Changolkar L, Riddle DM, Kats A, Stieber A, Weitzman SA, Zhang B, Li ZY, Roberson ED, Trojanowski JQ et al (2020) Human tau pathology transmits glial tau aggregates in the absence of neuronal tau. *J Exp Med* 217(2):e20190783

Publisher's Note

Springer Nature remains neutral with regard to jurisdictional claims in published maps and institutional affiliations.