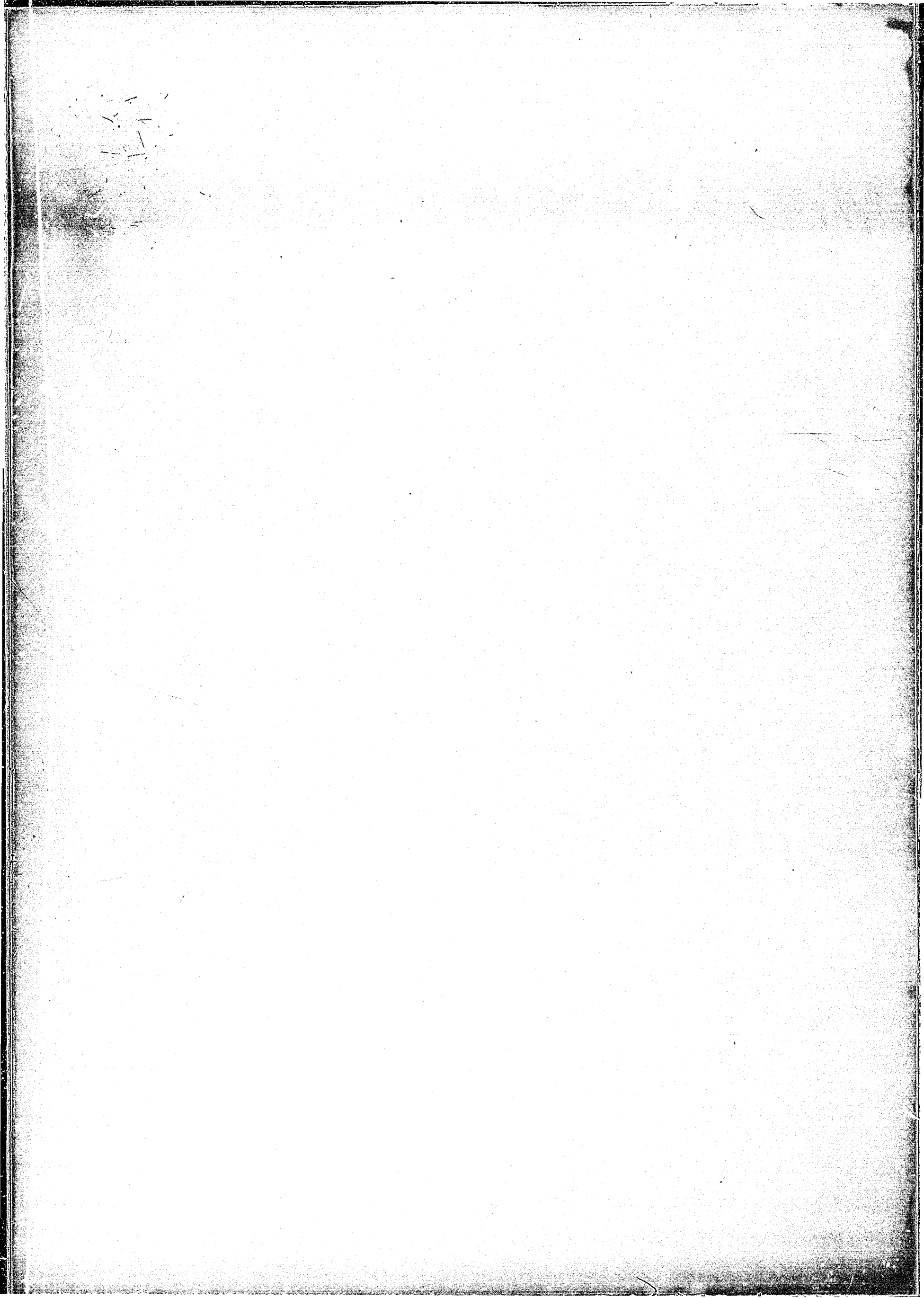


WAGNER, H. and GALVIN, J.M., 1977: Review and Refinement of Elastic Thin Plate Model. Chamber of Mines of South Africa, internal report. Project No. AX2C10C.

WAGNER, H. and GALVIN, J.M., 1979: Use of Hydraulically Placed PFA to Improve Stability in Bord and Pillar Workings in South African Collieries. Paper presented at the Symposium on the Utilization of Pulverised Fuel Ash, Pretoria, 5th-7th June, 1979.

WHITTAKER, B.N. and SINGH, R.N., 1979: Evaluation of the Design Requirements and Performance of Gate Roadways. The Mining Engineer, Vol. 138, No. 209, pp.535-553.

WILSON, J.W., SINGH, B.D. and NAKAJIMA, S., 1977: Design Considerations for Mining Thick Seams and Seams Lying in Close Proximity to One Another. Monograph 1 on Rock Mechanics Applications in Mining, New York: AIME: pp.3-13.



Author Galvin J M

Name of thesis The mining of South African thick coal seams - rock mechanics and mining considerations 1981

PUBLISHER:

University of the Witwatersrand, Johannesburg

©2013

LEGAL NOTICES:

Copyright Notice: All materials on the University of the Witwatersrand, Johannesburg Library website are protected by South African copyright law and may not be distributed, transmitted, displayed, or otherwise published in any format, without the prior written permission of the copyright owner.

Disclaimer and Terms of Use: Provided that you maintain all copyright and other notices contained therein, you may download material (one machine readable copy and one print copy per page) for your personal and/or educational non-commercial use only.

The University of the Witwatersrand, Johannesburg, is not responsible for any errors or omissions and excludes any and all liability for any errors in or omissions from the information on the Library website.