

Received: 19 June 2020 | Accepted: 12 November 2020

DOI: 10.1002/pamm.202000091

# A multi-scale fatigue-damage model for fiber-reinforced polymers

Nicola Magino<sup>1,\*</sup>, Jonathan Köbler<sup>1</sup>, Heiko Andrä<sup>1</sup>, Matti Schneider<sup>2</sup>, and Fabian Welschinger<sup>3</sup>

<sup>1</sup> Fraunhofer Institute for Industrial Mathematics ITWM, Department of Flow and Material Simulation, Kaiserslautern, Germany

<sup>2</sup> Karlsruhe Institute of Technology (KIT), Institute of Engineering Mechanics, Karlsruhe, Germany

<sup>3</sup> Robert Bosch GmbH, Corporate Sector Research and Advanced Engineering, Renningen, Germany

Experimental studies of Chebbi et al. [1] on fatigue loading of fiber-reinforced polymers have shown that there is a phase of stable stiffness decrease prior to growing fatigue cracks. Modeling this stiffness degradation is an essential step in understanding fatigue effects of these materials.

The constitutive behavior of short-fiber reinforced polymers depends on numerous factors, such as fiber-volume content, the aspect ratio of the fibers, the fiber-orientation tensor and the loading direction. Accounting for these influence factors on a purely experimental basis is very time and resource demanding.

As a remedy, we follow a multi-scale approach for simulating the fatigue-damage evolution in short-fiber reinforced polymers. Using a simple damage model for the polymer matrix, the model inherently accounts for the influence of the fiber micro-structure through homogenization. We show that the stiffness degradation predicted by this model is of anisotropic nature and depends strongly on loading direction and fiber-orientation tensor.

Due to its specific structure, the model permits a straightforward model-order-reduction strategy and can be efficiently employed for component-scale simulations, see Köbler et al. [3].

© 2021 The Authors *Proceedings in Applied Mathematics & Mechanics* published by Wiley-VCH GmbH

## 1 Fatigue-damage model for the polymer matrix

We present a material model for the matrix of a fiber-reinforced polymer material. The fibers are considered to be purely linear elastic. The matrix-material model is formulated in the framework of generalized standard materials proposed by Halphen-Nguyen [2]. The free energy potential  $\psi$  and the dissipation potential  $\phi$  are defined as

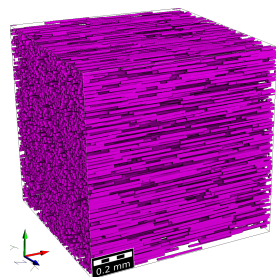
$$\psi(\varepsilon, D) = \frac{1}{2} [\eta + (1 - D)^2] \varepsilon : \mathbf{C} : \varepsilon + w \ell^2 \|\nabla D\|^2 \quad \text{and} \quad \phi(D') = \frac{1}{2\alpha} D'^2,$$

where  $\varepsilon$  denotes the strain tensor and the relative residual stiffness  $\eta > 0$  is introduced for numerical reasons,  $D$  is the scalar damage variable ranging from 0 (undamaged) to 1 (fully damaged),  $\mathbf{C}$  is the initial stiffness tensor of the material,  $w$  is a material parameter,  $\ell$  is a length-scale parameter and  $\alpha$  governs the speed of the damage evolution.

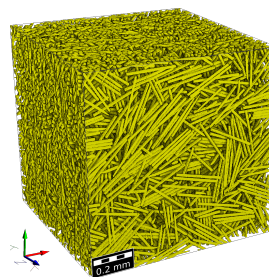
The model is a priori formulated in cycle space. We denote by  $(\cdot)' \equiv \frac{d}{dN}$  differentiation w.r.t. the cycle variable  $N$ .

The model is applied to different fiber orientations realized as representative volume elements that were generated by the SAM algorithm, see Schneider [5]. A typical representative volume element for a uni-directional (left) and a planar-isotropic fiber orientation, respectively, is shown in figure 1.

The model is discretized in time and space, and solved by a fast Fourier-transform based approach, see Köbler et al. [4], [3].



a) Uni-directional fiber structure



b) Planar-isotropic fiber structure

**Fig. 1:** Two unit cells with different fiber orientations

\* Corresponding author: e-mail [nicola.magino@itwm.fraunhofer.de](mailto:nicola.magino@itwm.fraunhofer.de), phone +49 (0)63131600-4494



This is an open access article under the terms of the Creative Commons Attribution License, which permits use, distribution and reproduction in any medium, provided the original work is properly cited.

## 2 Stiffness degradation for different stress amplitudes and fiber orientations

After carrying out several verification steps, a representative volume with an edge length of twice a fiber length was found to be sufficient for studying the primary stiffness degradation (loss in the effective moduli of several 10 %), see Köbler et al. [4]. A fiber is resolved by 128 voxels per length or, at a chosen aspect ratio of 20, by 6.4 voxels across the fiber diameter.

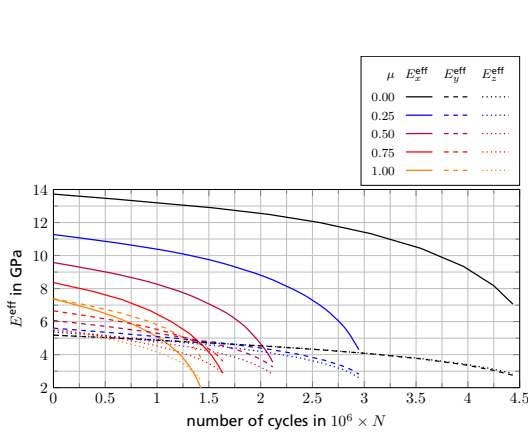
Subsequently, a study on the fiber-orientation influence on the stiffness degradation was conducted. The results for the above shown uni-directional and planar-isotropic structures are shown in figure 2 and 3.

Figure 2 shows the dependence of the effective Young's modulus decrease in x-, y- and z-direction subjected to loading in x-direction. The considered second-order fiber orientations interpolate between a uni-directional ( $\mu = 0$ ) and a planar-isotropic ( $\mu = 1$ ) second-order fiber-orientation tensor via

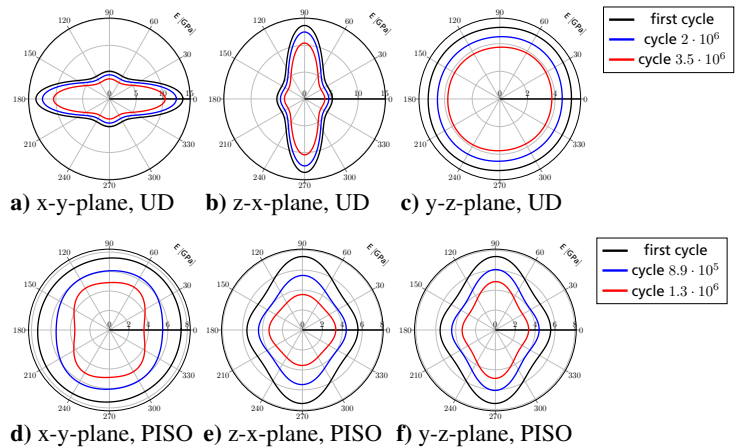
$$A(\mu) = \mu e_1 \otimes e_1 + (1 - \mu) \frac{1}{2} (e_2 \otimes e_2 + e_3 \otimes e_3), \quad \mu \in [0, 1]. \quad (1)$$

The evolution curves for different values of  $\mu$  lie in between the extreme structures, i.e., for  $\mu = 0$  and  $\mu = 1$ , and depend continuously on the parameter  $\mu$ .

Figure 3 depicts the evolution of the Young's modulus bodies of the planar-isotropic and the uni-directional structure for three different cutting planes. The decrease in loading direction, i.e. the x-direction, is the most significant for both scenarios. The degradation processes is thus found to be of anisotropic nature.



**Fig. 2:** Decrease of the absolute Young's modulus under loading in x-direction for fiber orientations parametrized between uni-directional and planar-isotropic



**Fig. 3:** Evolution of the Young's modulus body of the uni-directional (UD, top) and the planar-isotropic (PISO, bottom) structure for different cutting planes

How to incorporate the presented material model into a multi-scale simulation framework is discussed in Köbler et al. [3]. This data-driven method enables efficient computations on the component scale, predicting the stiffness degradation for engineering applications on component scale. This is part of ongoing research.

**Acknowledgements** We thank the Robert Bosch GmbH for financial support. MS thanks the German Research Foundation (DFG) for support within the International Research Training Group "Integrated engineering of continuous-discontinuous long fiber reinforced polymer structures" (GRK 2078).

Open access funding enabled and organized by Projekt DEAL.

## References

- [1] Chebbi, E., Mars, J., Wali, M. and Dammak, F. *Periodica Polytechnica Mechanical Engineering* **60**, 247–255 (2016).
- [2] Halphen, B., Nguyen, Q. S. *Journal de mécanique* **14**, 39-63 (1975)
- [3] Köbler, J., Magino, N., Andrä, H., Welschinger, F., Müller, R., Schneider, M. *Comput. Meth. Appl. Mech. Eng.* (submitted, 2020)
- [4] Köbler, J., Schneider, M., Ospald, F., Andrä, H., Müller, R. *Comput. Mech.* **61**, 729-750 (2018)
- [5] Schneider, M. *Comput. Mech.* **59**, 247–263 (2017)