

---

Phase 1

Class of 2023

---

2-2021

## LitCE

Emily Huang

Madalyne Sunday

Shreyas Chandragiri

Young Sheng

Colin Yost

*See next page for additional authors*

Follow this and additional works at: [https://jdc.jefferson.edu/si\\_des\\_2023\\_phase1](https://jdc.jefferson.edu/si_des_2023_phase1)



Part of the [Medicine and Health Sciences Commons](#)

## [Let us know how access to this document benefits you](#)

---

This Article is brought to you for free and open access by the Jefferson Digital Commons. The Jefferson Digital Commons is a service of Thomas Jefferson University's [Center for Teaching and Learning \(CTL\)](#). The Commons is a showcase for Jefferson books and journals, peer-reviewed scholarly publications, unique historical collections from the University archives, and teaching tools. The Jefferson Digital Commons allows researchers and interested readers anywhere in the world to learn about and keep up to date with Jefferson scholarship. This article has been accepted for inclusion in Phase 1 by an authorized administrator of the Jefferson Digital Commons. For more information, please contact: [JeffersonDigitalCommons@jefferson.edu](mailto:JeffersonDigitalCommons@jefferson.edu).

---

**Authors**

Emily Huang; Madalyne Sunday; Shreyas Chandragiri; Young Sheng; Colin Yost; Heli Patel; Jasmine Phun;  
and Geoffrey Hayden, MD

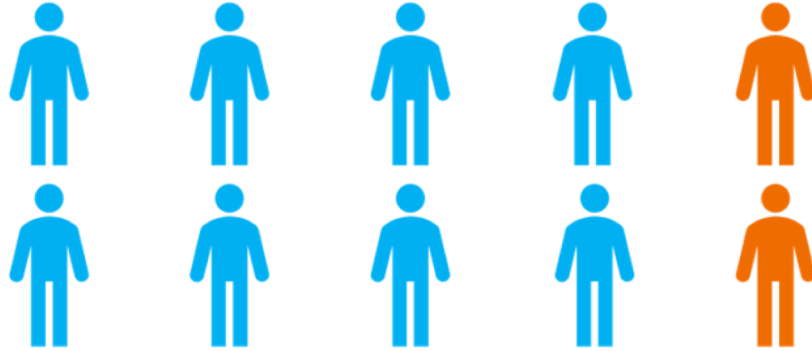
---



*Ensuring every patient gets it*

Emily Huang\*\*, Madalyne Sunday\*\*, Shreyas Chandragiri\*\*, Young Sheng\*\*, Colin Yost\*\* Heli Patel,  
Jasmine Phun, Geoffrey Hayden, MD\*

22%



of adults in Philadelphia lack basic literacy skills\*

How might we help **Sean, a 50 year old man with low health literacy**, better understand the **details of his care?**

# Objectives

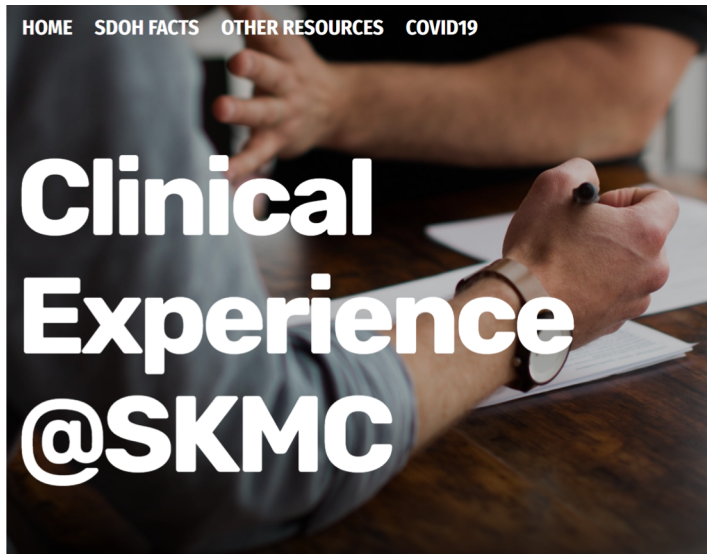


Identify patients with low health literacy

Improve the ability of medical students to communicate with these patients

Establish a clinical workflow that addresses low health literacy

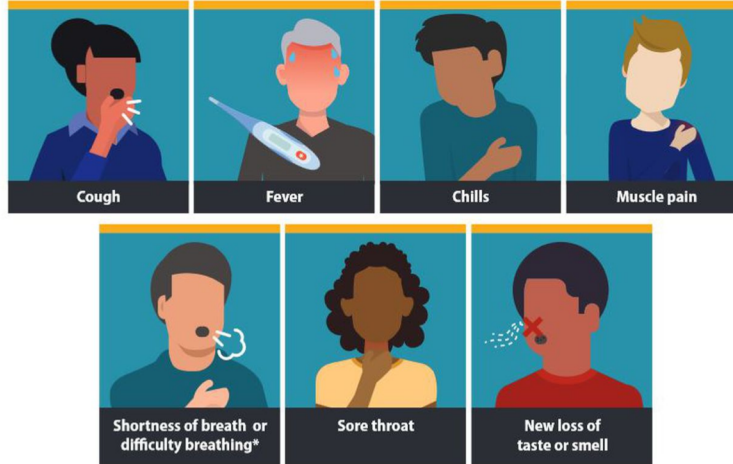
# Methods



# Prototype: Education/Screening Tools



Know the symptoms of COVID-19, which can include the following:



How often do you have someone help you read **hospital/pharmacy materials**? (Circle one)

1-Never 2-Occasionally 3-Sometimes 4-Often 5-Always

- Do you have any materials you would like me to help you read today?

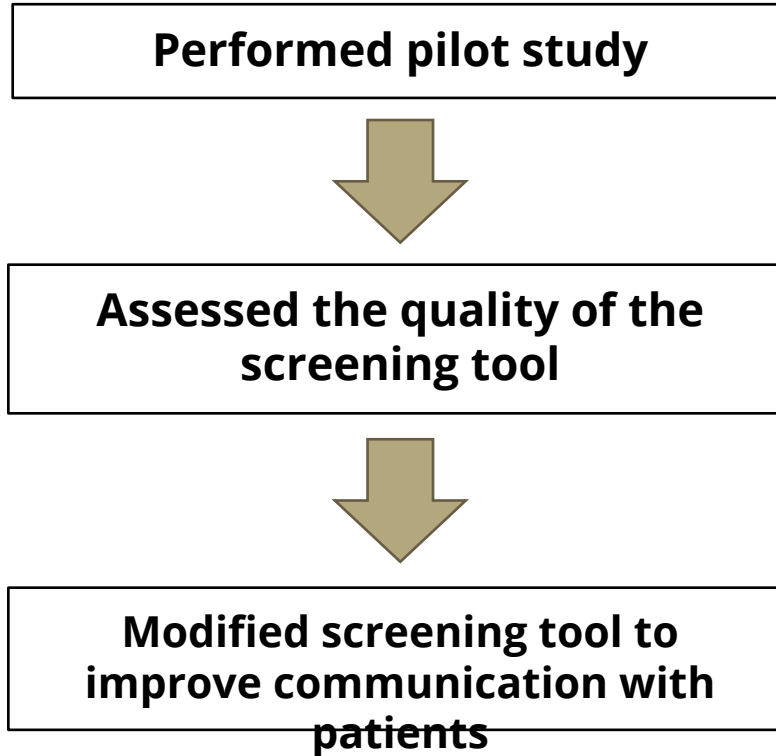


How **confident** are you **filling out medical forms** by yourself? (Circle one)

1-Not at all 2-A little 3-Somewhat 4-Quite a Bit 5-Extremely

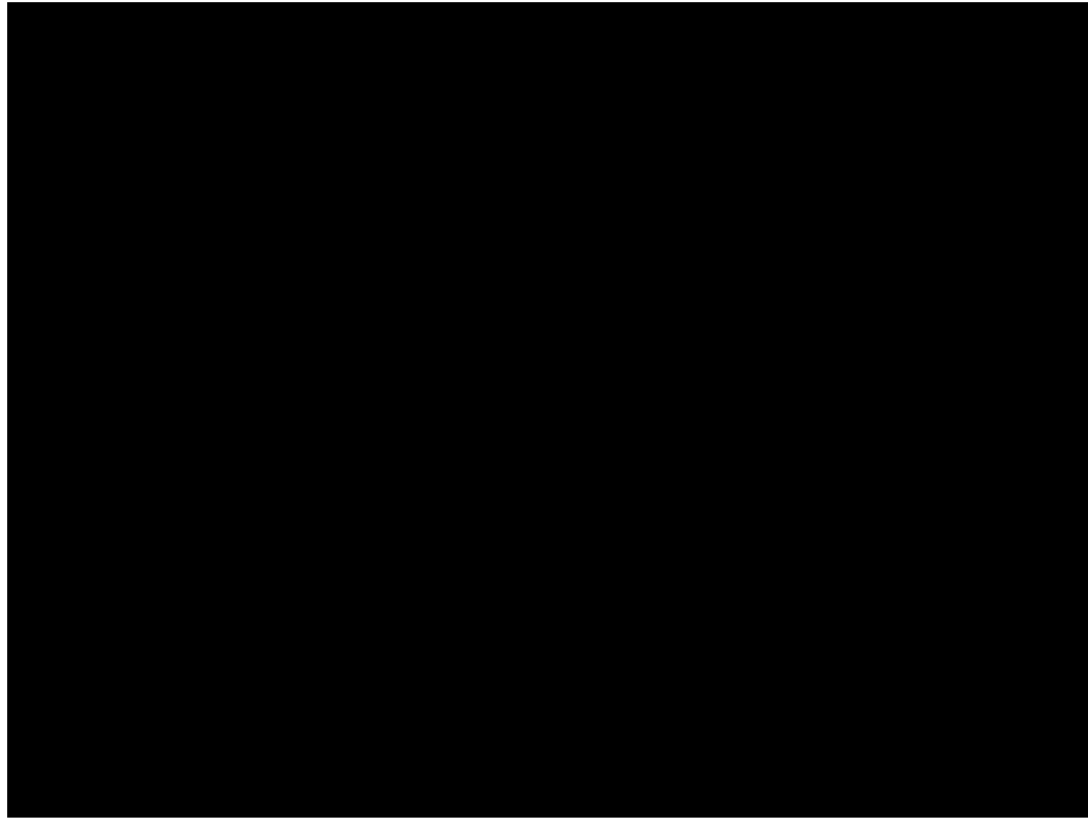
- Do you have any forms you would like me to help you fill out today?

# Preliminary Results





# Video



# Future Directions (2021)



## Run pilot study

- Preliminary Data
- Refine/Reiterate

## Implement in CE

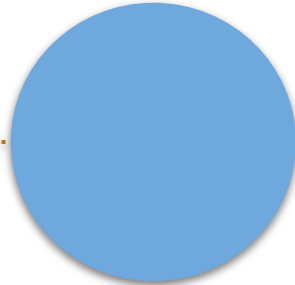
- Collect Data
- Test out interventions

## Additional Health Conditions

- Assess interventions
- Publish



Feb- March



March - July

