

COLLEGE OF POPULATION HEALTH

# *PopTalk* Webinar Series

## Five Myths About Poverty: What you may think, and what we know...

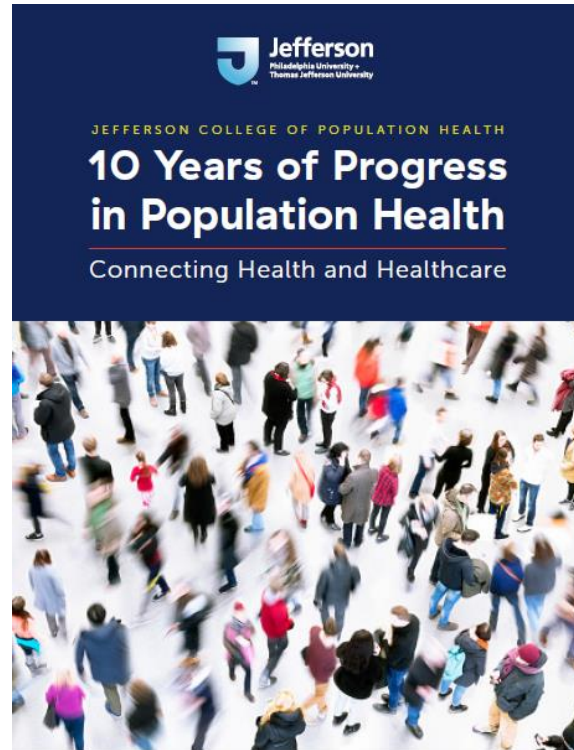
March 3, 2021

Mitchell Kaminski, MD, MBA  
Marcella Wilson, PhD



**Jefferson**  
Thomas Jefferson University

# Jefferson College of Population Health



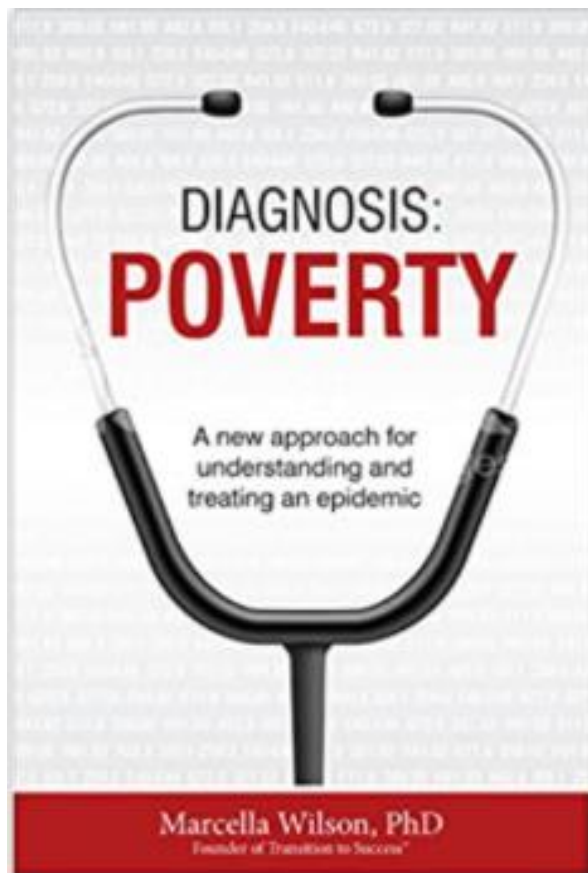
# Today's Presenters



Marcella Wilson, PhD  
*CEO and Founder*  
Transition To Success™, LLC



Mitch Kaminski, MD, MBA  
*Program Director, Pop Health*  
College of Population Health



# What is Poverty?

**“the state of one who lacks a usual or socially acceptable amount of money or material possessions”**

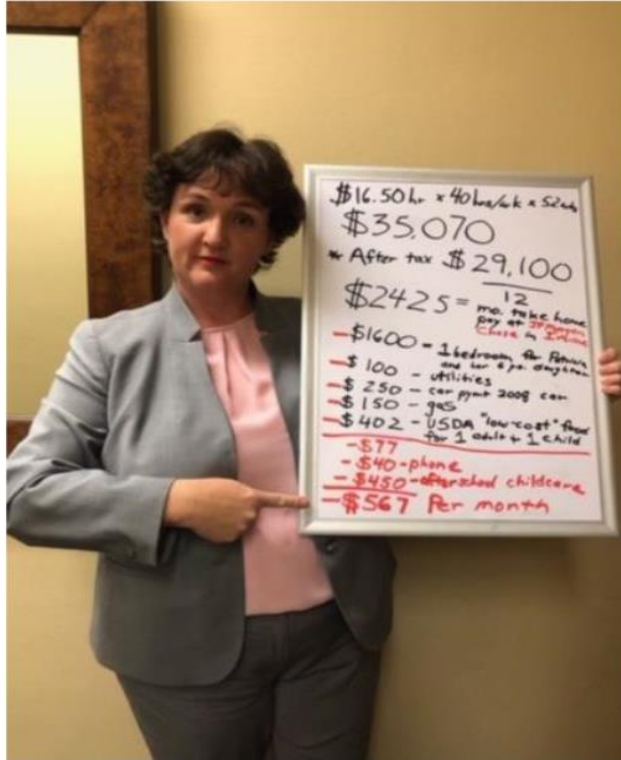
*Merriam Webster*

**“The multidimensional nature of poverty — in particular social aspects such as poor housing or poor health — needs to be understood in order to create more effective programs for poverty alleviation.”**

*United Nations*

**POVERTY is the OUTCOME of adverse social determinants of health, not merely that of income.**

# It's not just the homeless...



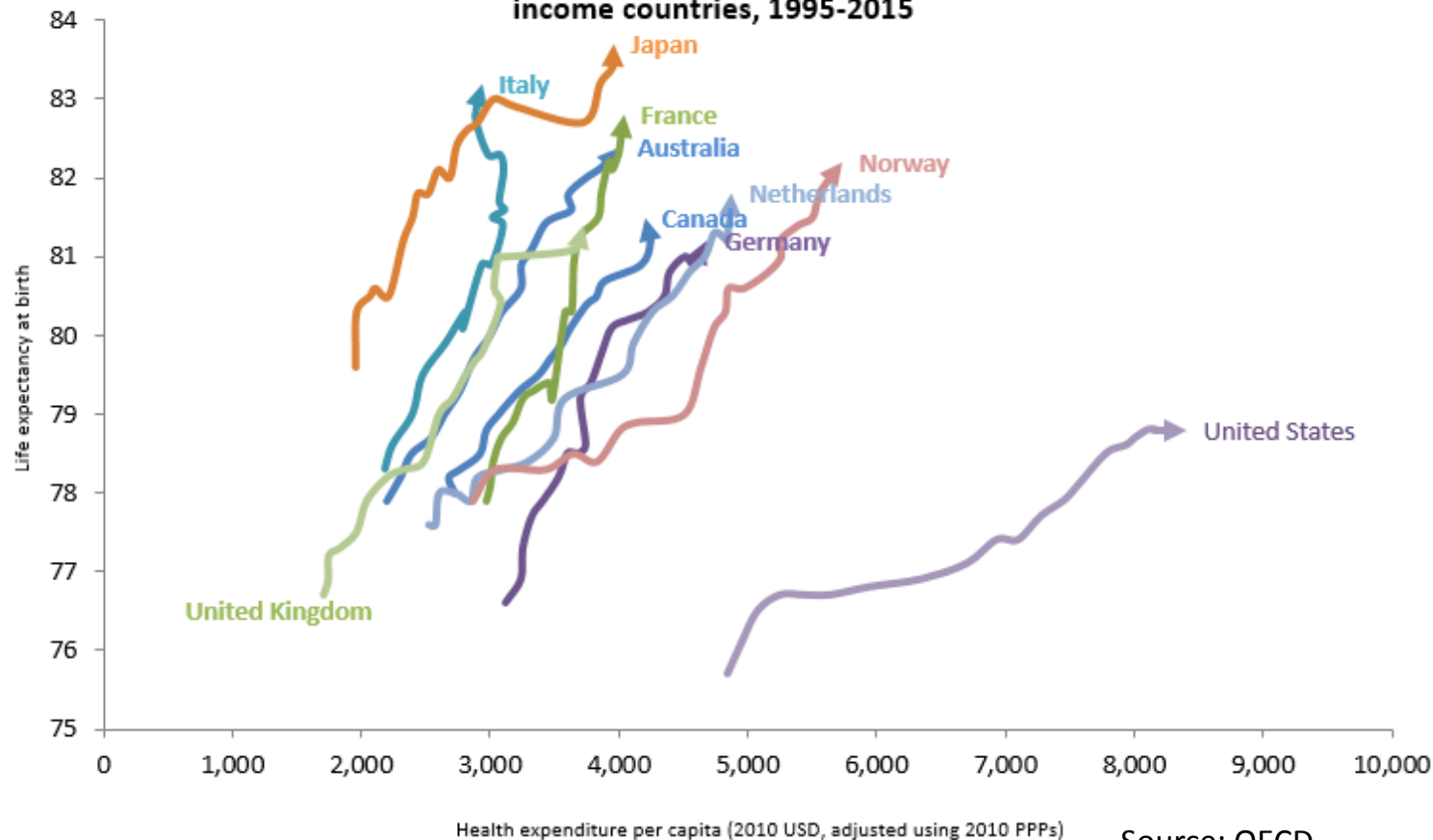
## Low Wage Worker Hard Truth

- **Salary**
  - \$35,000 annually
  - Post-tax - \$29,100 annually = **\$2,430 / month**
- **US National Average - Expenses**
  - Rent - \$1,190 / month
  - Utilities (Electric/Gas) - \$100 / month
  - Car Payment - \$361 (average used car monthly payment)
  - Gas for car - 30 miles a day X 30 days = 30 gallons / month or \$75 / month
  - Food - 1 child/1 adult - \$250/person/month - \$500
  - Cell Phone - \$73 / month
  - Childcare after school X 5 days - (range \$100 - \$550/month)  
\$275 / month
  - Miscellaneous - \$100

Approximate Total Monthly Expenses = \$2,674 / month

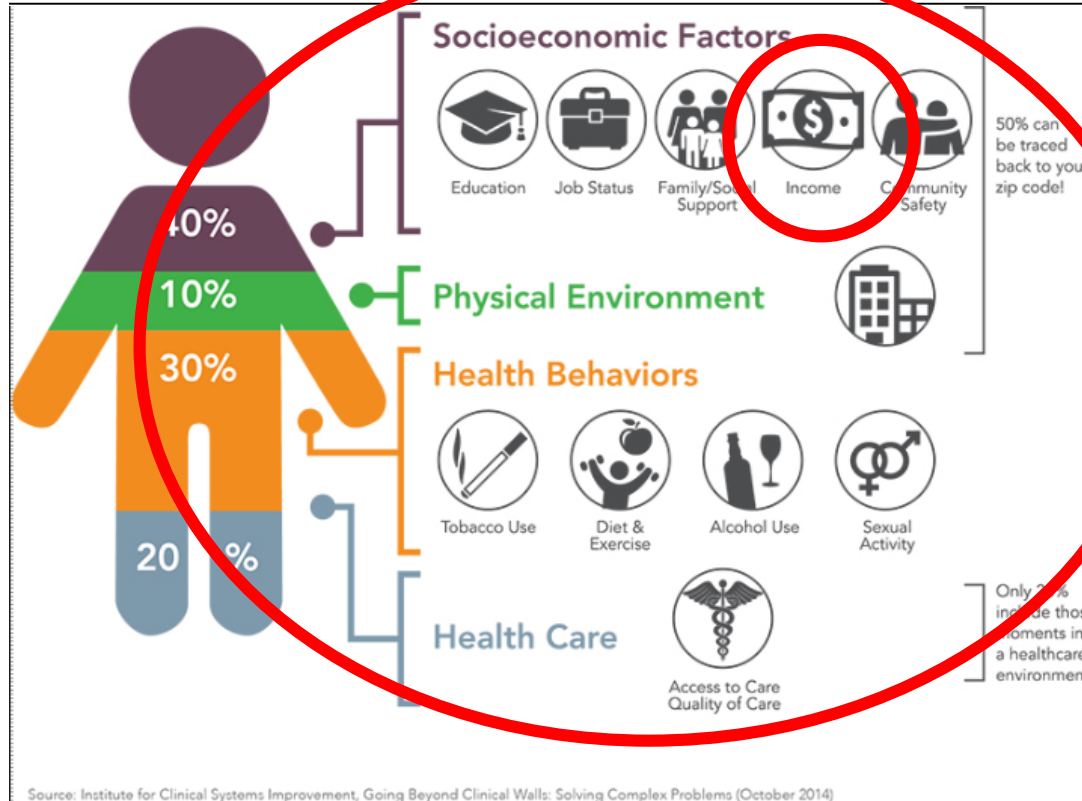
**-\$567 / month**

**Life expectancy gains and increased health spending, selected high-income countries, 1995-2015**



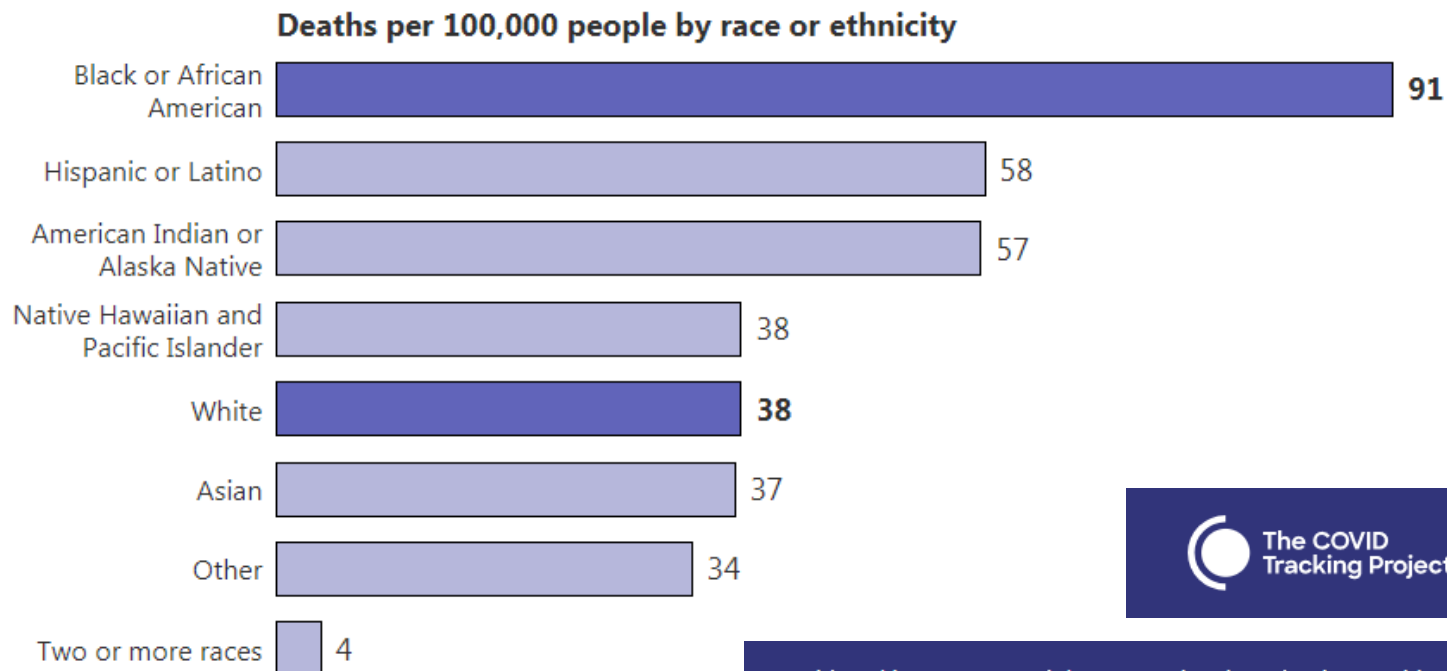
Source: OECD

# What Affects Health?





# Nationwide, Black people are dying at 2.4 times the rate of white people.



Marcella's work has given me insights



## **Myth**

**A story told again and again to explain why something is the way it is;**

**A widely held but false belief or idea.**

## The Power & Consequence of Myths

- **Misinformation**
- **Stereotypes**
- **Stigma**

**National Security** Foreign Policy Justice Military

**National Security**

## A mob insurrection stoked by false claims of election fraud and promises of violent restoration



The shattered glass windows of a door near the Rotunda on the west side of the U.S. Capitol building during a pro-Trump mob's storming of the U.S. Capitol building on Jan. 6, 2021. (Oliver Carroway for The Washington Post)

By [Greg Miller](#), [Greg Jaffe](#) and [Razzan Nakhliaw](#)

Jan. 8, 2021 at 8:49 p.m. EST

## **The Power & Consequence of Myths**

**Stereotypes: Beliefs about the attributes that characterize a group of people.**



## Kushner Questions if Black Americans “Want to be Successful”

## **The Power & Consequence of Myths**

**Stigma: Negative attitudes or  
discrimination against self or others  
based on distinguishing characteristics**



## Myth # 5

**Drug and/or alcohol use is rampant among the poor.**

**Fact: Poverty and addiction are not directly linked.**

*Gorski 2013*

## Myth # 4

**Welfare fraud is out of control and a major burden on tax payers.**

**Fact: We lose 10x more money to white collar crime than welfare fraud.**

<http://FederalSafetyNet.com/Safety-net-programs.html>

## Myth # 3

**Unemployment Insurance encourages jobless workers to stay unemployed.**

**Fact: The average unemployment check in the U.S. is \$320.00 per week, 1/24 of your highest earning quarter.**

*U.S. Dept of Labor 2020*

## Myth # 2

**Welfare encourages women to have babies.**

**Fact: Women receiving aid have fewer children than women who are not receiving aid.**

*Handler & Hasenfeld 2007:53*

## Myth #1

**People are poor because they are lazy and do not want to work.**

**Fact: Over 90% of people in poverty are children (33%), disabled (11%), caregivers/students (16%) or working adults with non-living wages.**

*Natl Low Income Housing Coalition 1/14/19*

# Treating Environmentally-Based, Industry-Accepted Medical Conditions\*

Environmental Exposures	Symptoms	Diagnosis	Standard of Care	Billable
Lead ingestion	Irritability, high blood pressure, long-term neurological damage	Lead poisoning	Required	✓
Asbestos	Trouble breathing, nausea, vomiting	Cancer/ Mesothelioma	Required	✓
Pollution	Difficulty breathing, decrease in lung function, wheezing	Asthma/COPD	Required	✓
<b>Social Determinants of Health</b> Food insecurity, high crime rates, inadequate/unaffordable housing, lack of access to basic needs/resources, limited access to quality healthcare, poorly performing schools, racism, and unemployment, transportation	Increased rates of diabetes and blood pressure, infant and maternal mortality, increased depression and mental health disorders, asthma, compromised immune system and brain development, higher death rates	Extreme Poverty (ICD 10 Z59.5) Homelessness (ICD 10 Z59.0) Lack of adequate food or safe drinking water (ICD 10 Z59.4) Low Income (ICD 10 Z59.6)	<b>Transition To Success (TTS):</b> Screening & CARE (Coordinating All Resources Effectively)	Behavioral Health and Substance Abuse. Billable CPT Codes for Medicaid, Medicare and Third Party

\* **Note:** Recognized disease without genetic predisposition

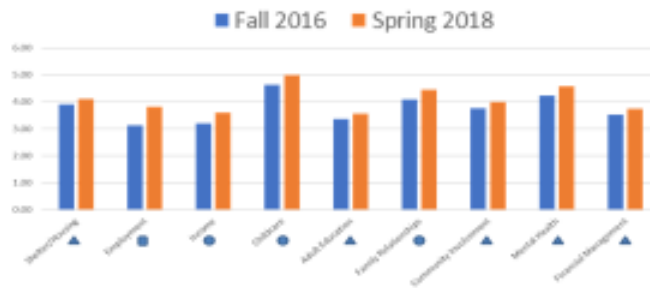
# TTS Independent Evaluation Results

At Child & Family Service, Hawaii:

Year End Evaluation of Pilot Implementation of Transition To Success<sup>®</sup>

## Hale Ho'omaluu Family Center and Head Start Kauai

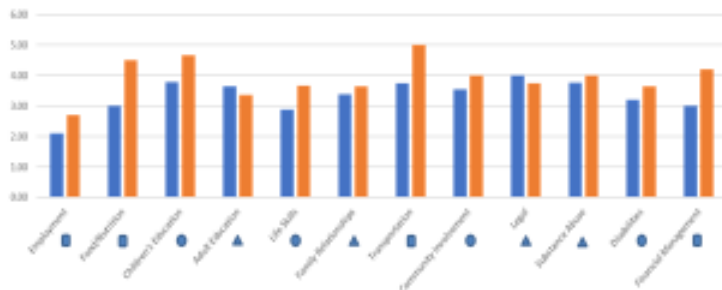
- Head Start - 20 Month Study
- No new funding
- Statistically significant change in 9 of 18 domains



## Neighborhood Place Wailuku

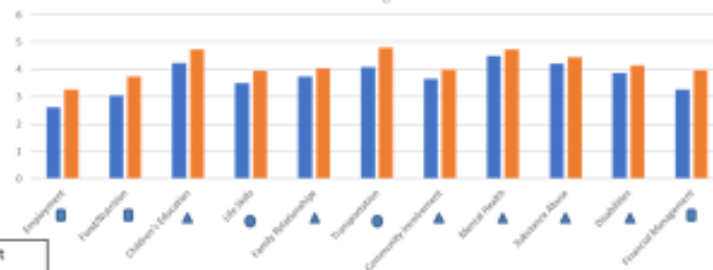
### Molokai Integrated Services Systems - Maui

- Human Service - 20 Month Study
- No new funding
- Statistically significant change in 12 of 18 domains



## Hawaii Statewide

- 20 Month Study – Children & Family Services Statewide
- No new funding
- Statistically significant change in 11 of 18 domains



SAS Services, LLC (SAS) was contracted by Child and Family Service and Goodwill Hawaii to evaluate of the pilot implementation of Transition-To-Success (TTS) model on Maui and Kauai's.

▲ p<.05 in means from pretest to posttest  
● p<.01 in means from pretest to posttest  
■ p<.001 from pretest to posttest

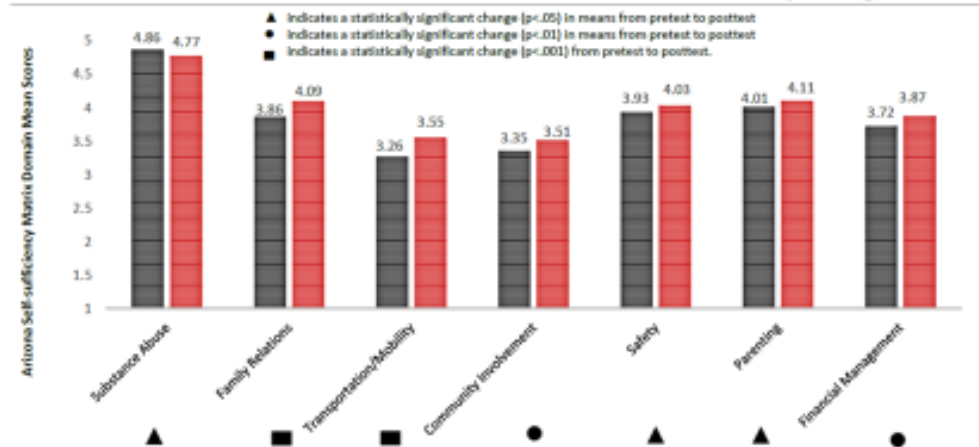
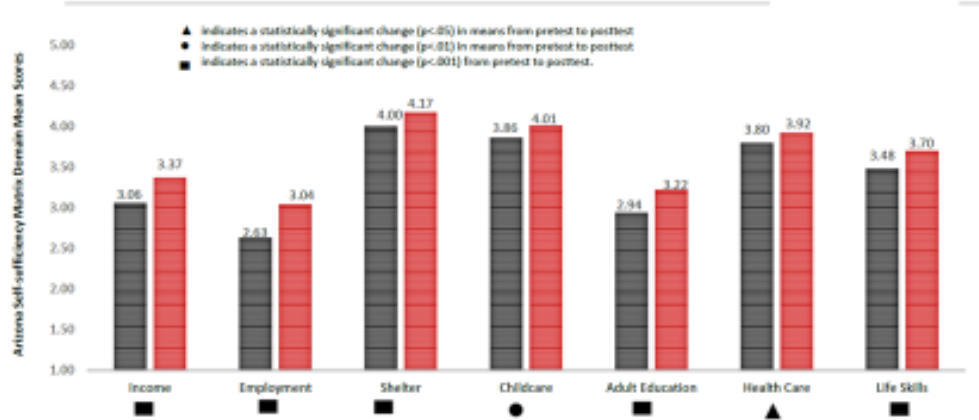
# TTS Independent Evaluation Results

## Detroit Head Start: Winter 2014 to Spring 2015

This 15-month independent study in Detroit Head Start focused on reducing the family exposure to 18 social determinants using a client self-reporting Likert scale for pre and post study reporting.

This study was completed with no new funding other than research and evaluation. Existing staffing (parent educators) and training budgets were used to implement Transition To Success in Head Start for this study.

Results of this independent evaluation indicate statistically significant improvement in 14 of 18 social determinant domains, including but not limited to income, employment, medication compliance, healthcare, education, transportation and financial management.





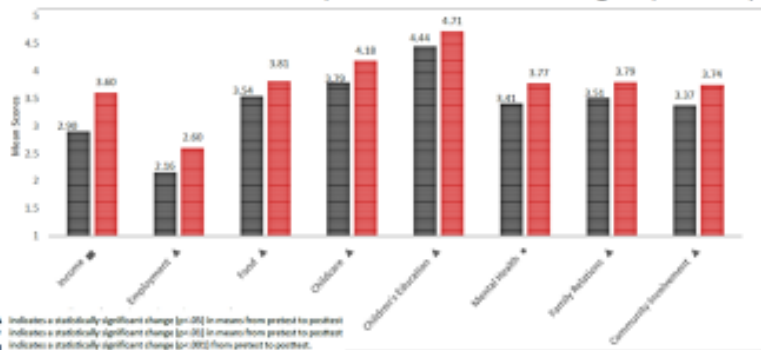
# TTS Independent Evaluation Results

## TTS Independent Evaluation Family Service of Detroit and Wayne County (FSDWC)

This 12-month independent evaluation of Transition To Success was completed at FSDWC, an outpatient, behavioral health, Medicaid Clinic in Detroit. Other than research and evaluation there was no additional funding for staffing and TTS training was accomplished within the existing training budget. In this study Master level, State of Michigan licensed therapists were trained in TTS, integrating social determinant screening and care management into the therapeutic response.

With an average length of stay of 6 outpatient visits clients reported statistically significant improvement in 8 of 18 domains, including but not limited to income, employment, food and mental health. All services provided were reimbursed by Medicaid at a cost of less than \$600.00 to the insurer.

FSDWC: SSM Domains with a Significant Change in Mean Scores from Pretest (January 2013 through February 2014) to Posttest (November 2013 through April 2014)



Transition To Success® Final Evaluation Report –  
8/29/2015 W.K. Kellogg Foundation  
Grant: P3018954

\* FSDWC: Family Service of Detroit and Wayne County

# Transition to Success®

## Detroit NBC Affiliate News Story Dreams Coming True



<https://youtu.be/Xiqn0Lhr0zE>

# Transition To Success® (TTS): A National Standard of Care To Treat the Condition of Poverty



- Robert Wood Johnson Foundation Initiative
- A Clinton Global Initiative
- Statistically Significant Independent Evaluation Results
- Pilots:
  - Assisi Foundation, Memphis, TN (Over 100 organizations)
  - Child and Family Services, HI (Statewide integration)
  - Third New Hope Baptist Church/Community Network, Detroit, MI (6 Congregations)
  - Catholic Charities, New Orleans, LA
  - Forward Service Corporation WI
  - Department of Children and Families, WI
  - Northeast Wisconsin Technical College, WI
- Publications:
  - "Diagnosis: Poverty - A new approach for understanding and treating an epidemic" – Book and Curriculum
  - The Online Journal of Issues in Nursing: "Child Poverty, Toxic Stress, and Social Determinants of Health: Screening and Care Coordination."
  - The American Journal of Health Promotion: "Social Determinants of Health – Relevant History, A call to Action, An Organization's Transformational Story, and What Can Employers Do?"
  - National Association of Social Workers (NASW), Commission for Case Manager Certification (CCMC): "Rethinking poverty: An evidence-based approach to treatment."

## The Power of One . . .

**"A little less conversation... a little more action"**

[https://www.lyrics.com/artist/Elvis Presley/5175](https://www.lyrics.com/artist/Elvis+Presley/5175)



*Elvis Presley*

# Thank you!



Check out my book:

[www.DiagnosisPoverty.com](http://www.DiagnosisPoverty.com)

Marcella Wilson, Ph.D.

[MWilson@TTS-LLC.org](mailto:MWilson@TTS-LLC.org)

[www.TransitionToSuccess.org](http://www.TransitionToSuccess.org)

(313) 580-2672

# Q & A

Complete a graduate certificate in 1 year  
or Master's degree in 2 years

## Population Health (PopH)

is a new academic and professional field that draws upon diverse disciplines to transform the delivery of health services.

---

*Health systems in the U.S. and around the world are shifting from volume to value. Population health professionals are on the leading edge of driving this change.*

---

- 100% online
- Accelerated 7-week courses
- Expert practitioner faculty

Learn more at: [Jefferson.edu/PopHealth](https://jefferson.edu/PopHealth)  
Questions: [JCPH.Admissions@jefferson.edu](mailto:JCPH.Admissions@jefferson.edu)

# *PopTalk*

## Webinar Series

One-hour webinars featuring experts in population health.



### **Controlling High Blood Pressure: An Evidence-Based Blueprint for Change**

**March 17, 2021 | 12:00-1:00 pm ET**

[Register Now](#)

[Visit our Website](#)  
for more information



Thank You!