

2-2021

Assessment for Simulation Training for Prehospital EMS Providers in Bermuda

David Duperreault

Roger Band, MD

Amy Gutman, MD

Dimitri Papanagnou, MD

Follow this and additional works at: https://jdc.jefferson.edu/si_me_2023_phase1

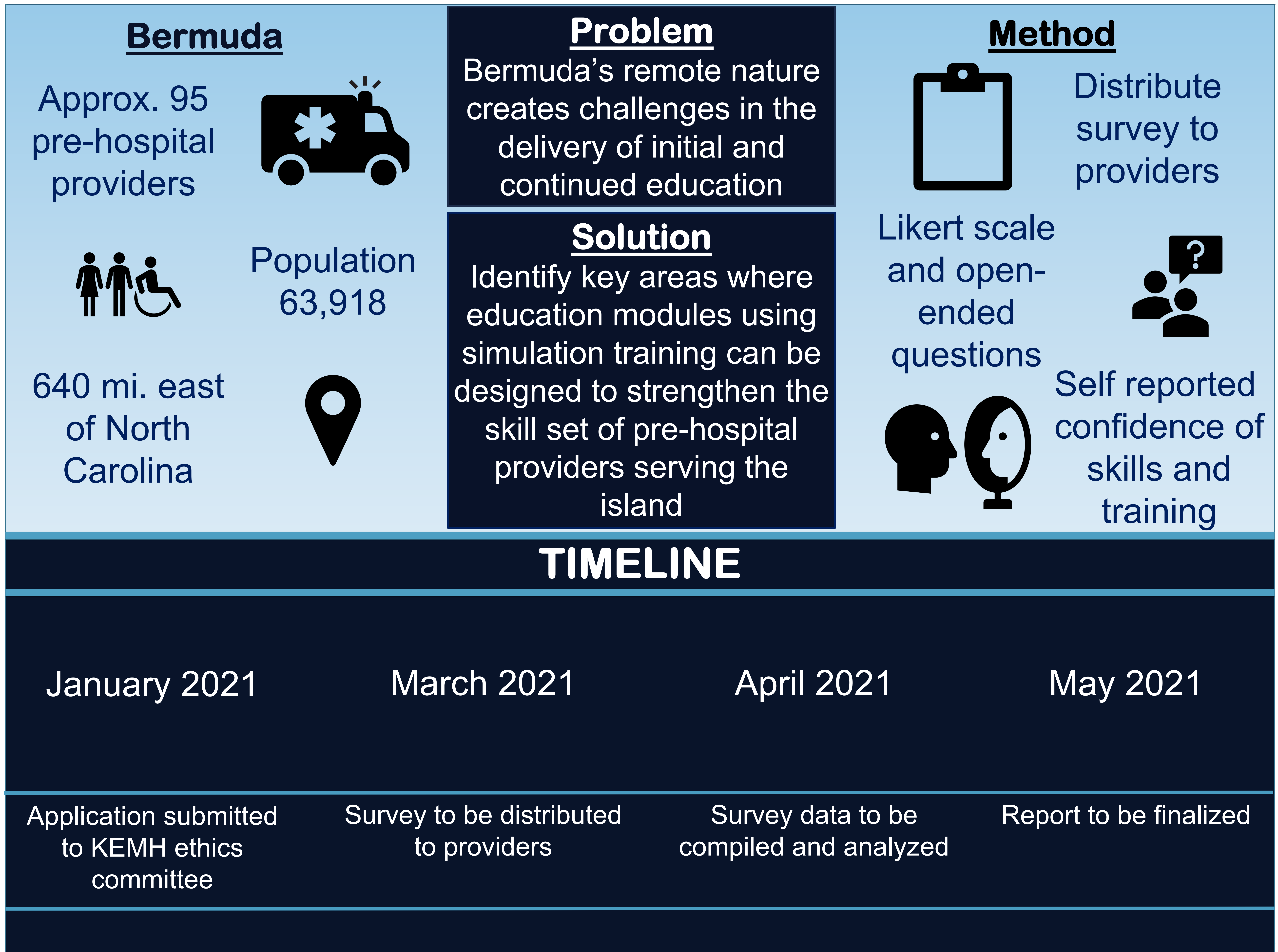


Part of the [Medical Education Commons](#)

[Let us know how access to this document benefits you](#)

This Article is brought to you for free and open access by the Jefferson Digital Commons. The Jefferson Digital Commons is a service of Thomas Jefferson University's [Center for Teaching and Learning \(CTL\)](#). The Commons is a showcase for Jefferson books and journals, peer-reviewed scholarly publications, unique historical collections from the University archives, and teaching tools. The Jefferson Digital Commons allows researchers and interested readers anywhere in the world to learn about and keep up to date with Jefferson scholarship. This article has been accepted for inclusion in Phase 1 by an authorized administrator of the Jefferson Digital Commons. For more information, please contact: JeffersonDigitalCommons@jefferson.edu.

What key areas require further education for pre-hospital EMS providers in Bermuda?



•Needs Assessment for Simulation Training for Prehospital EMS Providers in Bermuda

•Roger Band, MD*. David Duperreault, Amy Gutman MD, Dimitri Papanagnou MD