



Thomas Jefferson University
Jefferson Digital Commons

Department of Dermatology and Cutaneous
Biology Faculty Papers

Department of Dermatology and Cutaneous
Biology

12-1-2020

Bullous hemorrhagic Sweet syndrome with cryptococoid neutrophils in patients positive for antineutrophil cytoplasmic antibody without primary vasculitis.

Alex Sherban

Collin Fuller

Mansha Sethi

Eleni McGeehin

Dawn Hirokawa

See next page for additional authors

Follow this and additional works at: <https://jdc.jefferson.edu/dcbfp>

 Part of the [Dermatology Commons](#)

[Let us know how access to this document benefits you](#)

This Article is brought to you for free and open access by the Jefferson Digital Commons. The Jefferson Digital Commons is a service of Thomas Jefferson University's [Center for Teaching and Learning \(CTL\)](#). The Commons is a showcase for Jefferson books and journals, peer-reviewed scholarly publications, unique historical collections from the University archives, and teaching tools. The Jefferson Digital Commons allows researchers and interested readers anywhere in the world to learn about and keep up to date with Jefferson scholarship. This article has been accepted for inclusion in Department of Dermatology and Cutaneous Biology Faculty Papers by an authorized administrator of the Jefferson Digital Commons. For more information, please contact: JeffersonDigitalCommons@jefferson.edu.

Authors

Alex Sherban; Collin Fuller; Mansha Sethi; Eleni McGeehin; Dawn Hirokawa; Courtney Guerrieri; Jason B. Lee, MD; and Sherry Yang

Bullous hemorrhagic Sweet syndrome with cryptococoid neutrophils in patients positive for antineutrophil cytoplasmic antibody without primary vasculitis



Alex Sherban, BM,^a Collin Fuller, MD,^b Mansha Sethi, MD,^b Eleni McGeehin, MD,^b
Dawn Hirokawa, MD, MPH,^c Courtney Guerrieri, MD,^c Jason Lee, MD,^b and Sherry Yang, MD^b
Philadelphia, Pennsylvania and Newark, Delaware

Key words: clinical research; cryptococoid neutrophils; general dermatology; hemorrhagic bullae; medical dermatology; neutrophilic dermatoses; p-ANCA; Sweet syndrome; vasculitis.

INTRODUCTION

Sweet syndrome (SS) is a febrile neutrophilic dermatosis characterized by pyrexia, peripheral leukocytosis, and an abrupt onset of painful erythematous plaques and nodules.^{1,2} Lesions are typically found in an asymmetric distribution on the face, neck, and upper extremities and are often associated with an underlying malignancy, a systemic inflammatory condition, or a preceding infection.^{1,2} Histopathologic examination reveals a dense neutrophilic infiltrate with papillary dermal edema, and serum laboratory tests show leukocytosis, an elevated erythrocyte sedimentation rate, or both.^{1,2} Atypical bullous or hemorrhagic presentations have been described in the literature, with the majority in a setting of hematologic malignancy.³⁻⁷ Twenty percent of patients with SS have an underlying malignancy that can manifest with atypical bullae.⁸

Herein, we describe 3 patients with hemorrhagic SS and cryptococoid-appearing neutrophils on histopathologic examination, all of whom were found to be positive for antineutrophil cytoplasmic antibodies (ANCA) and negative for malignancy. This constellation of findings has rarely been described in the literature and raises new diagnostic and prognostic considerations for SS patients presenting with a hemorrhagic or bullous morphology.

Abbreviations used:

ANCA: antineutrophil cytoplasmic antibody
SS: Sweet syndrome

CASE DESCRIPTIONS

Case 1

A 70-year-old Caucasian woman with end-stage renal disease, diabetes, and chronic obstructive pulmonary disease presented to an outside hospital with fever, nausea, vomiting, and abdominal pain. Head computed tomography demonstrated a soft tissue swelling of the subcutaneous layer along the right parotid and submandibular glands, consistent with a subcutaneous infection, while chest X-ray revealed bilateral infiltrates. A culture of bronchial washings was positive for *Pseudomonas*. She was diagnosed with bilateral pneumonia complicated by septic shock and an infection of the parotid and submandibular glands before the development of hemorrhagic bullae on her face and arms. Subsequently, respiratory distress requiring intubation developed, and she was transferred to our hospital. She received multiple antibiotics, including vancomycin, cefepime, doxycycline, cephalexin, cefazolin, and piperacillin/tazobactam, prior to the transfer. Physical examination showed erythematous to violaceous tense hemorrhagic bullae on her face, neck, upper portion of

From the Sidney Kimmel Medical College,^a Department of Dermatology and Cutaneous Biology,^b Thomas Jefferson University, Philadelphia, Pennsylvania, and Department of Dermatology,^c ChristianaCare Health Systems, Newark, Delaware.

Funding sources: None.

Conflicts of interest: None disclosed.

IRB approval status: Not applicable.

Correspondence to: Sherry Yang, MD, 833 Chestnut Street, Suite 740, Philadelphia, PA 19107. E-mail: Sherry.yang@jefferson.edu.

JAAD Case Reports 2020;6:1196-200.
2352-5126

© 2020 by the American Academy of Dermatology, Inc. Published by Elsevier, Inc. This is an open access article under the CC BY-NC-ND license (<http://creativecommons.org/licenses/by-nc-nd/4.0/>).

<https://doi.org/10.1016/j.jidcr.2020.10.006>



Fig 1. SS with erythematous to violaceous tense hemorrhagic bullae in the right antecubital fossa of patient 1. SS, Sweet syndrome.



Fig 2. SS with violaceous tense bullae and focal erosions on the dorsal surface of the left hand of patient 1. SS, Sweet syndrome.

the chest, both arms, dorsal surface of the hands, and lateral aspect of the fingers (Figs 1 and 2). The differential diagnosis included atypical SS versus bullous small-to-medium-vessel vasculitis. A biopsy of the upper portion of the right arm showed a dense neutrophilic infiltrate in the mid-dermal layer with papillary dermal edema (Figs 3 and 4). The blood

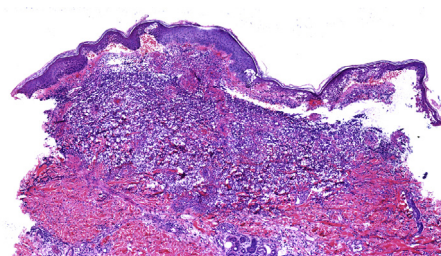


Fig 3. SS punch specimen from the right antecubital fossa showing a dense mixed-cell infiltrate in the superficial dermis. (Hematoxylin-eosin stain; original magnification: $\times 10$). SS, Sweet syndrome.

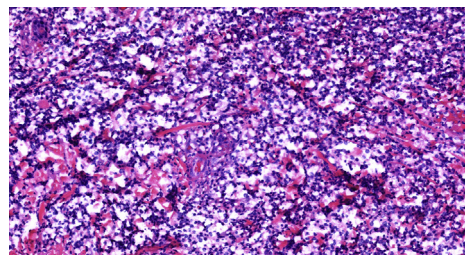


Fig 4. SS punch specimen from the right antecubital fossa showing many nuclei with prominent cleared-out space having an encapsulated appearance. (Hematoxylin-eosin stain; original magnification: $\times 40$). SS, Sweet syndrome.

vessels appeared to be intact. The neutrophils in the dermis exhibited prominent vacuolated cytoplasm. Gram, Grocott methenamine silver, and periodic acid-Schiff stains were negative for micro-organisms. Direct immunofluorescence test result was negative for IgG, IgM, IgA, and C3. ANCA test result was positive for perinuclear antineutrophil cytoplasmic antibody (p-ANCA), with titers elevated at $>1:640$. Proteinase 3 antibodies were also elevated at 123.4 (normal range, 0-20). Based on these findings, she was diagnosed with SS. Rheumatology and hematology/oncology workups failed to reveal the underlying cause. She was started on dapsone and a slow prednisone taper, with eventual clearance of her skin lesions.

Case 2

A 68-year-old Caucasian woman with chronic anemia, hypertension, and hypercholesterolemia, was admitted and intubated for a retropharyngeal abscess and respiratory distress as well as hemorrhagic papules and plaques on her face, arms, hands, legs, and eyelids. The patient was successfully extubated, with the resolution of her retropharyngeal abscess following the administration of intravenous antibiotics. Biopsies of the left arm and hand demonstrated dense neutrophilic infiltrates with leukocytoclasia and fibrin deposition, suggesting vasculitis. The differential diagnosis included neutrophilic



Fig 5. SS showing a crusted, hemorrhagic granulation tissue and violaceous plaque on the right ear of patient 3. SS, Sweet syndrome.

dermatosis with secondary vasculitis, primary small-vessel vasculitis, or a pustular drug eruption. Periodic acid–Schiff stain, acid-fast bacilli test, Gram stain, and tissue cultures were negative for infectious organisms, while direct immunofluorescence test failed to reveal vasculitis. The patient was positive for p-ANCA and negative for cytoplasmic antineutrophil cytoplasmic antibody (c-ANCA). Myeloperoxidase antibodies were elevated at 6.0 (negative < 0.4). Proteinase 3 antibodies were equivocal at 0.7 (negative < 0.4, equivocal 0.4-0.9). Hematology/oncology, rheumatology, and infectious disease workups were negative. Based on the negative direct immunofluorescence test result, p-ANCA positivity, and histologic neutrophilic infiltrate, the patient was diagnosed with SS with secondary vasculitis. She was treated with prednisone, mycophenolate mofetil, and dapson, but she ultimately died due to urosepsis and multiorgan failure.

Case 3

A 70-year-old Caucasian woman with end-stage renal disease, diabetes, and recent cardiac catheterization was admitted for respiratory syncytial virus pneumonia. She was found to have painful ulcerations of varying durations on her head, upper extremities, and tongue. She denied having fevers, chills, changes in vision, weight loss, or cocaine use. Examination showed a crusted, hemorrhagic granulation tissue on the bilateral triangular fossae (Fig 5). The posterior part of the left forearm, plantar

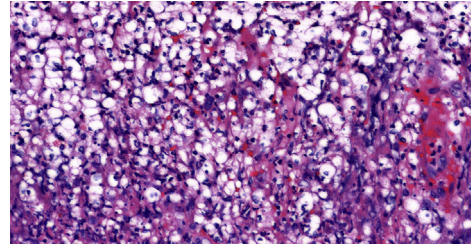


Fig 6. SS punch specimen from the right ear showing a dense infiltrate consisting of neutrophils and their nuclear dust and lymphocytes. (Hematoxylin-eosin stain; original magnification: $\times 39$). SS, Sweet syndrome.

surface of the index fingers, and the left side of the tongue showed deeply erythematous to violaceous exudative plaques and papules with hemorrhage. The differential diagnosis included calciphylaxis, cholesterol emboli, and neutrophilic dermatoses. Without intervention, she reported a progression in the number of lesions, with new painful, purpuric papules on her hands and elbows and worsening of the existing lesions.

A biopsy of the upper part of the left ear showed a dense neutrophilic infiltrate, without the evidence of vasculitis or fungal infection. A biopsy of the right ear later showed a dense neutrophilic infiltrate with cryptococoid-appearing bodies, which was further described as a dense neutrophilic infiltrate (Fig 6). Gram stain and tissue culture for acid-fast bacilli and fungi failed to reveal an infectious cause. Myeloperoxidase antibody titers were elevated at >0.8 (negative < 0.4). Antinuclear antibody titers were 1:320 in a homogeneous pattern. Antihistone antibody titers were elevated at 2.6 (negative < 1.0). Extractable nuclear antigen ribonucleoprotein IgG antibody titers were elevated at >8.0 (negative < 1.0). Proteinase 3 antibody titers were negative at <0.2 (negative < 0.4). The patient was diagnosed with SS, and she improved following the initiation of prednisone, dapson, and mycophenolate mofetil.

DISCUSSION

We present a case series linking rare findings that have not been previously reported together in SS. Three elderly Caucasian women presented with bullous hemorrhagic lesions that were temporally related to infections. Further investigation revealed that each patient was positive for ANCA, with vacuolated basophilic bodies on the biopsy and the histologic evidence supporting vasculitis. While these findings have been reported independently, this is the first time, to our knowledge, that all 3 have been reported in a similar population. We predict

that these atypical findings are associated and have a causal relationship.

The bullous variant of SS presents with hemorrhagic bullae and splitting of the dermoepidermal junction.³⁻⁵ The marked activation of the neutrophils and subsequent tissue destruction may be related to the expression of CD3, CD163, tumor necrosis factor- α , interleukin (IL) 8, IL-17, matrix metalloproteinase-9, and myeloperoxidase.⁴ This extensive destruction by the neutrophils may be compounded in patients positive for ANCA. Both c-ANCA and p-ANCA have been seen in SS.^{4,5}

The absence of vasculitis has been a hallmark of SS. However, a study by Malone et al investigating the association between vasculitis and SS found that 21% of patients in the study met the diagnostic criteria for vasculitis, not including patients with signs of vessel damage without fibrinoid necrosis.⁹ The study proposed that vasculitic changes could be secondary to neutrophil activation and degranulation, not immune complex deposition.⁹

SS may induce secondary vasculitis.¹⁰ A case report of neutrophilic dermatosis of the dorsal surface of the hands found the patient to be positive for p-ANCA, with a decrease in the level of p-ANCA corresponding to the “clinical activity of the dermatoses,” suggesting a correlation between neutrophilic dermatosis and ANCA.¹⁰

The presence of ANCA without autoimmune vasculitis has been noted in the literature. In a retrospective analysis of patients positive for ANCA, 60.2% of the 113 patients positive for c-ANCA or p-ANCA had no evidence of ANCA-associated vasculitis.¹¹ There are several etiologies associated with ANCA positivity without vasculitis, including infectious diseases.¹¹

Another report of a patient with SS suggested that the patient, initially negative for ANCA, became positive for ANCA because of abnormal neutrophil fragmentation and degradation, allowing the normally sequestered intracellular contents of the neutrophils to be exposed to the immune system, leading to ANCA generation.¹² Other studies have hypothesized that fragmented neutrophils and the release of neutrophilic antigens may be responsible for the development of ANCA in patients with SS.¹³

While SS can be a harbinger of vasculitis positive for ANCA-positive vasculitis, the detection of circulating ANCA more likely results from the intense neutrophil degradation in the setting of SS triggered by an infectious etiology, as demonstrated by this case series. The lack of small-to-medium-vessel involvement in other organ systems and improvement of ANCA titers corresponding to the resolution

of SS can be helpful indicators against a diagnosis of primary ANCA vasculitis.

A histologic variant of SS exists when the neutrophilic dermal infiltrate surrounds vacuolated spaces with basophilic bodies, mimicking the encapsulated appearance of cryptococcal infections.^{6,7,14,15} These acellular, cryptococoid bodies are thought to be due to degenerating neutrophils within the neutrophilic infiltrate.^{6,14,15} Their basophilic component stains similar to the nuclei of the surrounding neutrophils, with negative fungal stains.⁶

Our hypothesis states that there are likely varying degrees of SS, and the infections that each of our patients experienced led to an acute, exuberant stimulation of the neutrophils. We believe that the vacuolated spaces or cryptococoid appearance seen on the biopsy represented rapidly degenerating neutrophils that led to abundant neutrophilic antigens and the resultant production of ANCA without true autoimmune vasculitis. The cryptococoid-appearing neutrophils and ANCA positivity may portend a more clinically aggressive presentation of SS. In the absence of other risk factors or laboratory abnormalities, providers should consider these findings as a representation of infection-induced hemorrhagic SS rather than pursuing an aggressive workup for an underlying malignancy. Further studies are needed to fully understand the relationships among these rare findings.

REFERENCES

1. Cohen PR. Sweets syndrome – A comprehensive review of an acute febrile neutrophilic dermatosis. *Orphanet J Rare Dis.* 2007;2(1):34.
2. Rochet NM, Chavan RN, Cappel MA, Wada DA, Gibson LE. Sweet syndrome: clinical presentation, associations, and response to treatment in 77 patients. *J Am Acad Dermatol.* 2013;69(4):557-564.
3. Voelker-Mahlknecht S, Bauer J, Metzler G, Fierlbeck G, Rassner G. Bullous variant of Sweets syndrome. *Int J Dermatol.* 2005;44(11):946-947.
4. Bhat AG, Malleshappa SKS, Pasupula DK, Duke W, Shaaban R. Bullous variant of Sweet syndrome as a consequence of radioiodine contrast exposure. *Cureus.* 2018;10(10):e3490.
5. Lund JJ, Stratman EJ, Jose D, Xia L, Wilson D, Moizuddin M. Drug-induced bullous Sweet syndrome with multiple autoimmune features. *Autoimmune Dis.* 2010;2010:1-4.
6. Ko JS, Fernandez AP, Anderson KA, et al. Morphologic mimickers of *Cryptococcus* occurring within inflammatory infiltrates in the setting of neutrophilic dermatitis: a series of three cases highlighting clinical dilemmas associated with a novel histopathologic pitfall. *J Cutan Pathol.* 2012;40(1):38-45.
7. Wilson TC, Stone MS, Swick BL. Histiocytoid Sweet syndrome with haloed myeloid cells masquerading as a cryptococcal infection. *Am J Dermatopathol.* 2014;36(3):264-269.
8. Kinser KN, Panach K, Dominguez AR. Recurrent malignancy-associated atypical neutrophilic dermatosis with noninfectious shock. *Am J Med Sci.* 2017;354(6):626-632.

9. Malone JC, Slone SP, Wills-Frank LA, et al. Vascular Inflammation (vasculitis) in Sweet syndrome. *Arch Dermatol.* 2002;138(3):345-349.
10. Malik M, Perkins W, Leach I. Anti-neutrophil cytoplasmic antibody-positive neutrophilic dermatosis of the dorsal hands. *Clin Exp Dermatol.* 2012;37(8):869-870.
11. Bornstein G, Ben-Zvi I, Furie N, Grossman C. Clinical significance of positive anti-neutrophil cytoplasmic antibodies without evidence of anti-neutrophil cytoplasmic antibodies-associated vasculitis. *Int J Rheum Dis.* 2019;22(5):940-945.
12. Darné S, Natarajan S, Blasdale C. Do antineutrophil cytoplasmic antibodies (ANCA) play a key role in neutrophilic dermatoses? A case of propylthiouracil-induced neutrophilic dermatosis with positive perinuclear ANCA. *Clin Exp Dermatol.* 2010;35(4):406-408.
13. Kemmett D, Harrison D, Hunter J. Antibodies to neutrophil cytoplasmic antigens: a serologic marker for Sweets syndrome. *J Am Acad Dermatol.* 1991;24(6):967-969.
14. Wilson J, Gleghorn K, Kelly B. Cryptococcoid Sweets syndrome: Two reports of Sweets syndrome mimicking cutaneous cryptococcosis. *J Cutan Pathol.* 2017;44(5):413-419.
15. Berg S, Cummings L. Sweet syndrome histologically mimicking cutaneous *cryptococcus*. *J Am Acad Dermatol.* 2019;81(4):AB281.