

11-26-2020

Medical therapy vs early revascularization in diabetics with chronic total occlusions: A meta-analysis and systematic review

Muhammad Shayan Khan

Farhad Sami

Hemindermeet Singh

Waqas Ullah

Ma'en Al-Dabbas

See next page for additional authors

Follow this and additional works at: <https://jdc.jefferson.edu/abingtonfp>



Part of the [Internal Medicine Commons](#)

[Let us know how access to this document benefits you](#)

This Article is brought to you for free and open access by the Jefferson Digital Commons. The Jefferson Digital Commons is a service of Thomas Jefferson University's [Center for Teaching and Learning \(CTL\)](#). The Commons is a showcase for Jefferson books and journals, peer-reviewed scholarly publications, unique historical collections from the University archives, and teaching tools. The Jefferson Digital Commons allows researchers and interested readers anywhere in the world to learn about and keep up to date with Jefferson scholarship. This article has been accepted for inclusion in Abington Jefferson Health Papers by an authorized administrator of the Jefferson Digital Commons. For more information, please contact: JeffersonDigitalCommons@jefferson.edu.

Authors

Muhammad Shayam Khan, Farhad Sami, Hemindermeet Singh, Waqas Ullah, Ma'en Al-Dabbas, Khalid Hamid Chagal, Tanveer Mir, Zain Ali, and Ameer Kabour

World Journal of *Cardiology*

World J Cardiol 2020 November 26; 12(11): 513-598



ORIGINAL ARTICLE**Retrospective Study**

- 513 Effectiveness and safety of antithrombotic strategies in elderly patients with acute myocardial infarction
Rondano E, Bertolazzi M, Galluzzo A, Maltese L, Caccianotti P, Macciò S, Mazza S, Di Ruocco MV, Favretto S, Occhetta E, Rametta F

Clinical Trials Study

- 526 Endothelial progenitor cells mobilization after maximal exercise according to heart failure severity
Kourek C, Karatzanos E, Psarra K, Georgiopoulos G, Delis D, Linardatou V, Gavrielatos G, Papadopoulos C, Nanas S, Dimopoulos S

SYSTEMATIC REVIEWS

- 540 Rapid right ventricular pacing for balloon valvuloplasty in congenital aortic stenosis: A systematic review
Mylonas KS, Ziogas IA, Mylona CS, Avgerinos DV, Bakoyiannis C, Mitropoulos F, Tzifa A

META-ANALYSIS

- 550 Effects of left ventricular assist device on pulmonary functions and pulmonary hemodynamics: A meta-analysis
Ullah W, Meizinger C, Ali Z, Panchal A, Saeed R, Haas DC, Rame E
- 559 Medical therapy *vs* early revascularization in diabetics with chronic total occlusions: A meta-analysis and systematic review
Khan MS, Sami FA, Singh H, Ullah W, Al-Dabbas M, Changal KH, Mir T, Ali Z, Kabour A
- 571 Transradial *vs* transfemoral secondary access outcomes in transcatheter aortic valve implantation: A systematic review and meta-analysis
Radhakrishnan SL, Ho KKL
- 584 Cardiac adverse events of immune checkpoint inhibitors in oncology patients: A systematic review and meta-analysis
Nso N, Antwi-Amoabeng D, Beutler BD, Ulanja MB, Ghuman J, Hanfy A, Nimo-Boampong J, Atanga S, Doshi R, Enoru S, Gullapalli N

ABOUT COVER

Editorial board member of *World Journal of Cardiology*, Dr. Alexander Kharlamov, MD, FESC (2018), FACC (2019), FEACVI (2019), has 24 years of clinical experience in general cardiology (since 1996; Consultant Physician since 2007; Board-Certified Cardiologist since 2010), 19 years of translational research experience in nanomedicine and biomedical engineering (since 2001), and about 13 years of bench-to-bedside study experience in interventional cardiology (a leader of the research group since 2007), including investigations into advanced imaging, vascular biology, and pathology, RTD of cardiovascular imaging software and medical devices (bioresorbable scaffolds and stents). He is an author of more than 60 articles and grant proposals for the European Commission, and has received various national and international awards for his research work. (L-Editor: Filipodia)

AIMS AND SCOPE

The primary aim of *World Journal of Cardiology* (*WJC*, *World J Cardiol*) is to provide scholars and readers from various fields of cardiology with a platform to publish high-quality basic and clinical research articles and communicate their research findings online.

WJC mainly publishes articles reporting research results and findings obtained in the field of cardiology and covering a wide range of topics including acute coronary syndromes, aneurysm, angina, arrhythmias, atherosclerosis, atrial fibrillation, cardiomyopathy, congenital heart disease, coronary artery disease, heart failure, hypertension, imaging, infection, myocardial infarction, pathology, peripheral vessels, public health, Raynaud's syndrome, stroke, thrombosis, and valvular disease.

INDEXING/ABSTRACTING

The *WJC* is now abstracted and indexed in Emerging Sources Citation Index (Web of Science), PubMed, PubMed Central, Scopus, China National Knowledge Infrastructure (CNKI), China Science and Technology Journal Database (CSTJ), and Superstar Journals Database.

RESPONSIBLE EDITORS FOR THIS ISSUE

Production Editor: Jia-Hui Li; Production Department Director: Xiang Li; Editorial Office Director: Jia-Ping Yan.

NAME OF JOURNAL

World Journal of Cardiology

ISSN

ISSN 1949-8462 (online)

LAUNCH DATE

December 31, 2009

FREQUENCY

Monthly

EDITORS-IN-CHIEF

Ramdas G Pai, Dimitrios Tousoulis, Marco Matteo Ciccone

EDITORIAL BOARD MEMBERS

<https://www.wjgnet.com/1949-8462/editorialboard.htm>

PUBLICATION DATE

November 26, 2020

COPYRIGHT

© 2020 Baishideng Publishing Group Inc

INSTRUCTIONS TO AUTHORS

<https://www.wjgnet.com/bpg/gerinfo/204>

GUIDELINES FOR ETHICS DOCUMENTS

<https://www.wjgnet.com/bpg/GerInfo/287>

GUIDELINES FOR NON-NATIVE SPEAKERS OF ENGLISH

<https://www.wjgnet.com/bpg/gerinfo/240>

PUBLICATION ETHICS

<https://www.wjgnet.com/bpg/GerInfo/288>

PUBLICATION MISCONDUCT

<https://www.wjgnet.com/bpg/gerinfo/208>

ARTICLE PROCESSING CHARGE

<https://www.wjgnet.com/bpg/gerinfo/242>

STEPS FOR SUBMITTING MANUSCRIPTS

<https://www.wjgnet.com/bpg/GerInfo/239>

ONLINE SUBMISSION

<https://www.f6publishing.com>

Medical therapy vs early revascularization in diabetics with chronic total occlusions: A meta-analysis and systematic review

Muhammad Shayan Khan, Farhad Sami, Hemindermeet Singh, Waqas Ullah, Ma'en Al-Dabbas, Khalid Hamid Changal, Tanveer Mir, Zain Ali, Ameer Kabour

ORCID number: Muhammad Shayan Khan 0000-0002-2888-1191; Farhad Ahmed Sami 0000-0001-9464-6934; Hemindermeet Singh 0000-0002-1301-3471; Waqas Ullah 0000-0002-4850-0309; Ma'en Al-Dabbas 0000-0002-6555-2514; Khalid Hamid Changal 0000-0003-0790-8233; Tanveer Mir 0000-0001-6822-9600; Zain Ali 0000-0002-5457-9420; Ameer Kabour 0000-0002-4088-3990.

Author contributions: Khan MS contributed to concept and design of the manuscript including the acquisition, analysis and interpretation of data as primary and corresponding author; Sami FA and Changal KH had substantial contributions to the conception or design of the work, provided the majority of images; Singh H, Ullah W, Al-Dabbas M contributed to the analysis of cases including drafting the work for important intellectual content; Mir T, Kabour A and Ali Z had substantial contributions to the conception or design of the work, provided the majority of images and drafted the work critically including the final version and agreed to be accountable for all aspects of the work. All authors revised the work critically including the final version and agreed to be accountable for all aspects of the work.

Muhammad Shayan Khan, Internal Medicine, Mercy Saint Vincent Medical Centre, Toledo, OH 43608, United States

Farhad Sami, Internal Medicine, University of Kansas School of Medicine, Kansas City, Kansas, 66202, United States

Hemindermeet Singh, Ma'en Al-Dabbas, Ameer Kabour, Department of Cardiovascular Fellowship, Mercy St Vincent Medical Center and Hospital, Toledo, OH 43608, United States

Waqas Ullah, Internal Medicine, Abington Jefferson Health, Abington, Abington Township, Montgomery County, PA 19001, United States

Khalid Hamid Changal, Department of Cardiovascular Medicine, University of Toledo, Toledo, OH 43606, United States

Tanveer Mir, Internal Medicine, Detroit Medical Center, Detroit, MI 48201, United States

Zain Ali, Internal Medicine, Abington Jefferson Health, Philadelphia, PA 19001, United States

Corresponding author: Muhammad Shayan Khan, MBBS, MD, Doctor, Internal Medicine, Mercy Saint Vincent Medical Centre, 2213 Cherry Street, Toledo, OH 43608, United States. muhammadshayankhan1@gmail.com

Abstract

BACKGROUND

Management of chronic total occlusions (CTO) in diabetics is challenging, with a recent trend towards early revascularization [ER: Percutaneous coronary intervention (PCI) and bypass grafting] instead of optimal medical therapy (OMT). We hypothesize that ER improves morbidity and mortality outcomes in diabetic patients with CTOs as compared to OMT.

AIM

To determine the long term clinical outcomes and to compare morbidity and mortality between OMT and ER in diabetic patients with CTOs.

METHODS

Potentially relevant published clinical trials were identified in Medline, Embase, chemical abstracts and Biosis (from start of the databases till date) and pooled hazard ratios (HR) computed using a random effects model, with significant *P*

Conflict-of-interest statement:

Authors report no conflict of interest.

PRISMA 2009 Checklist statement:

The Authors have read the PRISMA checklist and the manuscript was prepared and revised according to the 2009 PRISMA check list.

Open-Access: This article is an open-access article that was selected by an in-house editor and fully peer-reviewed by external reviewers. It is distributed in accordance with the Creative Commons Attribution NonCommercial (CC BY-NC 4.0) license, which permits others to distribute, remix, adapt, build upon this work non-commercially, and license their derivative works on different terms, provided the original work is properly cited and the use is non-commercial. See: <http://creativecommons.org/licenses/by-nc/4.0/>

Manuscript source: Unsolicited manuscript

Specialty type: Cardiac and cardiovascular systems

Country/Territory of origin: United States

Peer-review report's scientific quality classification

Grade A (Excellent): 0
Grade B (Very good): B
Grade C (Good): 0
Grade D (Fair): 0
Grade E (Poor): 0

Received: July 6, 2020

Peer-review started: July 6, 2020

First decision: September 17, 2020

Revised: September 30, 2020

Accepted: October 29, 2020

Article in press: October 29, 2020

Published online: November 26, 2020

P-Reviewer: Prasad G

S-Editor: Zhang L

L-Editor: A

P-Editor: Wang LYT

value < 0.05. Primary outcome of interest was all-cause death. Secondary outcomes included cardiac death, prompt revascularization (ER) or repeat myocardial infarction (MI). Due to scarcity of data, both Randomized control trials and observational studies were included. 4 eligible articles, containing 2248 patients were identified (1252 in OMT and 1196 in ER). Mean follow-up was 45-60 mo.

RESULTS

OMT was associated with a higher all-cause mortality [HR: 1.70, 95% confidence interval (CI): 0.80-3.26, $P = 0.11$] and cardiac mortality (HR: 1.68, 95%CI: 0.96-2.96, $P = 0.07$). Results were close to significance. The risk of repeat MI was almost the same in both groups (HR: 0.97, 95%CI: 0.61-1.54, $P = 0.90$). Similarly, patients assigned to OMT had a higher risk of repeat revascularization (HR: 1.62, 95%CI: 1.36-1.94, $P < 0.00001$). Sub-group analysis of OMT *vs* PCI demonstrated higher all-cause (HR: 1.98, 95%CI: 1.36-2.87, $P = 0.0003$) and cardiac mortality (HR: 1.87, 95%CI: 0.96-3.62, $P = 0.06$) in the OMT group. The risk of repeat MI was low in the OMT group *vs* PCI (HR: 0.53, 95%CI: 0.31-0.91, $P = 0.02$). Data on repeat revascularization revealed no difference between the two (HR: 1.00, 95%CI: 0.52-1.93, $P = 1.00$).

CONCLUSION

In diabetic patients with CTO, there was a trend for improved outcomes with ER regarding all-cause and cardiac death as compared to OMT. These findings were reinforced with statistical significance on subgroup analysis of OMT *vs* PCI.

Key Words: Coronary angiography; Diabetes mellitus; Percutaneous coronary Intervention; Coronary bypass grafts; Chronic total occlusions; Mortality

©The Author(s) 2020. Published by Baishideng Publishing Group Inc. All rights reserved.

Core Tip: There is a well-known association with worse outcomes from chronic total occlusions in diabetics. These lesions have been traditionally treated with optimal medical therapy (OMT) with the standard of care for revascularization being coronary artery bypass grafting with little evidence of superiority over OMT. Our results reveal for the first time a trend towards superiority of the prompt revascularization group to OMT in terms of all cause and cardiac death in diabetics with chronic total occlusions. These findings were reinforced on subgroup analysis. However, patients undergoing percutaneous coronary intervention had a higher risk of repeat fatal and non-fatal myocardial infarction as compared to OMT. The risk for repeat revascularization was similar in both groups.

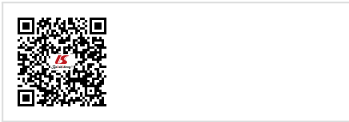
Citation: Khan MS, Sami FA, Singh H, Ullah W, Al-Dabbas M, Chagal KH, Mir T, Ali Z, Kabour A. Medical therapy *vs* early revascularization in diabetics with chronic total occlusions: A meta-analysis and systematic review. *World J Cardiol* 2020; 12(11): 559-570

URL: <https://www.wjgnet.com/1949-8462/full/v12/i11/559.htm>

DOI: <https://dx.doi.org/10.4330/wjc.v12.i11.559>

INTRODUCTION

Chronic total occlusion (CTO) of a coronary artery is defined as a 100% stenosis with thrombolysis in myocardial infarction 0/I flow for greater than 3 mo^[1,2]. The prevalence of CTOs ranges from 18%-26% in all patients with coronary artery disease (CAD) and almost 50% in patients with previous coronary artery bypass grafting (CABG)^[3]. Around 10% of patients with acute myocardial infarction (MI) are also found to have CTOs^[3]. Presence of CTO is associated with lifestyle impairment, reduced cardiac performance and poor long-term outcomes^[3,4]. Given the complex nature and uncertainty regarding mortality benefit from revascularization, these lesions were traditionally treated with optimal medical therapy (OMT). However, with recent advancement in percutaneous techniques and greater operator experience along



with better patient selection, there has been an increase in the trend of CTO interventions in contemporary practice.

In this complex subset of CAD population, diabetic patients are particularly at higher risk of poor outcomes as compared to their non-diabetic counter-parts^[5-7]. Despite lack of sufficient studies, recent evidence suggest that successful CTO revascularization is associated with improved outcomes of quality of life, left ventricular systolic function and potentially survival in general population^[8,9]. However, limited data exists regarding long-term outcomes in diabetic patients with CTO treated with revascularization. We, therefore, conducted this meta-analysis of randomized clinical and observational studies to compare clinical outcomes with revascularization *vs* optimal medical therapy in diabetic patients with CTO.

MATERIALS AND METHODS

We followed the preferred reporting items for systematic reviews and meta-analyses guidelines, a checklist of which is available as supplementary material^[10].

Search strategy

A predefined inclusion criterion was established in advance. Potentially relevant published clinical trials were identified in Medline, Embase, chemical abstracts and Biosis (from start of the databases till date). The following search items were used to search titles and abstracts: (Optimal medical therapy? or OMT? Or intensive medical therapy or IMT or revascularization? Or prompt revascularization or early revascularization? And diabetic or type 2 diabetes or DM and chronic total occlusion or CTO and clinical trials. Due to scarcity of data, both observational and interventional studies were included. Studies were limited to involving humans only.

Selection criteria

Two researchers independently performed an electronic search of pub med and web of science databases. No language restrictions were made. Studies were included if they met the following criteria; intervention with OMT and early revascularization (PCI or CABG) in diabetics as variables and primary outcome of interest as all cause death. Secondary outcomes included cardiac death, prompt revascularization (ER) or repeat MI. Studies were included if successful revascularization (CABG or PCI) was performed within six weeks of randomization or start of study. Both short and long term follow ups were included in literature review. 48 articles were identified after the search. The second selection step involved proof-reading of those articles to ensure the first step was performed correctly. Articles were excluded if data on OMT or prompt revascularization (ER) was missing, trials did not include diabetic subjects or primary and secondary outcomes of interest were not available. In case of un-clarity, inclusion of the studies was discussed amongst the authors to arrive at a final decision.

Data extraction and statistical analysis

Data was extracted from each study using a standardized spread sheet which involved study identification (Author, year of publication and country), study type, percent males, subject baseline characteristics with history of coronary artery disease, number of cases in OMT and ER arms, time of follow up, type of stent used (Drug eluting *vs* bare-metal), exclusion criteria and quality scoring.

To calculate the overall effect outcome, generic inverse variance tool under the random effects model to calculate pooled hazard ratios (HR) was performed using Cochrane's review manager. The "test for overall effect" was reported as z value corroborating inference from the 95% confidence interval (CI), and the probability value of $P < 0.05$ was considered statistically significant. Higgins I-squared (I²) statistic model was used to assess variations in outcomes of included studies. I² values of 50% or less corresponded to low to moderate, and 75% or higher indicated large amounts of heterogeneity. Publication bias was illustrated graphically using a funnel plot asymmetry. The methodological quality of included articles was performed using the Cochrane guidelines for systematic review and meta-analysis.

We also assessed quality using a scoring system based on the Delphi consensus for meta-analysis^[11]. The following criteria were used for scoring: Proper randomization (Score: 1 point), similarity of treatment groups in relevant variables at baseline (1 point), blinding of subjects and investigators (1 point for each), specified eligibility criteria (1 point), valid point estimates and measures of variability (1 point) and data on degree of compliance (1 point). Thus, a combined score was calculated for each

study which could range from 0 to 7 points. For the observational studies, a score of 0 was given for randomization. Quality scores for each study have been illustrated in [Table 1](#).

RESULTS

The search through Pub med and Med of science databases yielded 48 potentially relevant articles. Based on predefined exclusion criteria, 44 papers were excluded for various reasons. 1 Randomized control trial^[12] and 3 observational studies^[13-15] involving a total of 2448 subjects were included in the meta-analysis. The number of subjects ranged from 236 in Yan *et al*^[15] to 972 in Damluji *et al*^[12]. Mean age ranged from 59.2 years in Yan *et al*^[15] to 68.5 years in Flores-Umanzor *et al*^[13]. Reported compliance was 100%. Follow up time ranged from 45 mo in Yan *et al*^[15] To 60 mo in Damluji *et al*^[12] as above, studies were included if successful revascularization (CABG or PCI) was performed within six weeks of randomization or start of study. OMT included pharmacological therapy as well as lifestyle modification. Pharmacologic therapy across the studies included antiplatelet therapy (as needed), maximum tolerated dose of anti-anginals (B-Blocker plus a long acting nitrate and/or a calcium channel blocker) and statins. Baseline characteristics of all studies have been illustrated in [Table 1](#), with the major co-morbidities across all studies in [Table 2](#). Among studies with reported data, right coronary artery was the vessel most commonly diseased ([Table 3](#)).

Primary effect outcome

Three out of four studies reported long term all-cause mortality. There was a 70% increase in risk of pooled all-cause mortality in the OMT group, although the confidence interval did cross 1, (HR: 1.70, 95%CI: 0.80-3.26, $P = 0.11$, see [Figure 1A](#)). Significant heterogeneity was observed, ($I^2 = 88\%$, $P = 0.0003$). After removing the study by Flores-Umanzor *et al*^[13], no significant heterogeneity was seen, ($I^2 = 28\%$, $P = 0.24$) however, pooled results were similar, (HR: 1.21, 95%CI: 0.79-4.19, $P = 0.38$, [Figure 1B](#)). In order to assess for publication bias, a funnel plot for each study was constructed against their respective precisions. Absence of publication bias is reflected in an intercept close to zero with the slope of regression line close to overall effect size. Although the small number of studies limited its interpretation however, a subjective impression of funnel plot demonstrated no publication bias.

Secondary effect outcomes

All four studies reported long term cardiac mortality. The long-term HR for cardiac mortality was 1.68 with 95%CI: 0.96-2.96 and $P = 0.07$ in the OMT group with an overall 68% increased risk as compared to the ER group, results were close to significance ([Figure 1C](#)). Significant heterogeneity was again observed, ($I^2 = 76\%$, $P = 0.006$). After removing Flores-Umanzor *et al*^[13] from the analysis, mortality was higher in the OMT group, however the CI crossed 1, (HR: 1.24, 95%CI: 0.85-1.81, $P = 0.27$).

Data for repeat MI was available for all four studies. No significant differences in the hazard ratio were observed between the two groups. (HR: 0.97, 95%CI: 0.61-1.54, $P = 0.90$, [Figure 2A](#)). No significant heterogeneity was observed, ($I^2 = 41\%$, $P = 0.16$).

All four studies reported data on repeat revascularization (PCI and CABG). There was a 62% increase in risk of repeat revascularization in patients assigned to medical therapy, and results were statistically significant, (HR: 1.62, 95%CI: 1.36-1.94, $P < 0.00001$, [Figure 2B](#)). No publication bias or study heterogeneity was observed, $I^2 = 0\%$.

Subgroup analysis

Sub-group analysis stratified by mode of revascularization *i.e.* CABG or PCI was also performed for both primary and secondary effect outcomes. Only Flores-Umanzor *et al*^[13] provided data on both PCI and CABG where as two studies provided data on PCI only. Thus, subgroup analysis was done only for PCI.

For all-cause mortality, sub group analysis of OMT vs PCI revealed a 98% increased risk in the OMT group, (HR: 1.98, 95%CI: 1.36-2.87, $P = 0.0003$, [Figure 3A](#)). This was statistically significant with no significant heterogeneity, ($I^2 = 0$, $P = 0.83$).

Similarly, sub-group analysis for cardiac mortality was also done comparing PCI vs OMT. Three out of four studies *i.e.*, Flores-Umanzor *et al*^[13] and Yan *et al*^[15] provided data on PCI. There was an 87% increased risk of cardiac mortality in the OMT vs PCI group, (HR: 1.87, 95%CI: 0.96-3.62, $P = 0.06$, [Figure 3B](#)). Results were not statistically significant with moderate heterogeneity, ($I^2 = 60\%$, $P = 0.08$).

Table 1 Baseline characteristics of all studies

Ref.	Damluji <i>et al</i> ^[12]	Flores-Umanzor <i>et al</i> ^[13]	Yan <i>et al</i> ^[15]	Choi <i>et al</i> ^[14]
Type of study	Randomized control trial (Post Hoc analysis of BARI-2D)	Cohort (prospective)	Cohort (retrospective)	Cohort (retrospective)
Country	United States	Spain	China	South Korea
Period during which study was done	2001-05	2010-14	2007-17	2003-12
Study size (Patients with DM and CTO)	972	538	2361	702
Follow up in months	60	48	45	46
Male (%)	78	82	78	77
Age, mean (yr)	62.5	68.5+/-3.5	60	64.6
Type of stent used if PCI	DES or BMS	-	DES	DES
Exclusion criteria	Need for immediate revascularization, left main coronary disease, a creatinine level > 2.0 mg/dL, a glycated hemoglobin level > 13.0%, heart failure class III or IV, hepatic dysfunction, or previous PCI or CABG within the last 12 mo	No exclusion criteria	(1) Patients who had a history of CABG; (2) Patients who had acute myocardial infarction (MI) due to non-CTO vessels 1 mo before the study; (3) Patients who had left main coronary artery disease; and (4) Patients who had histories of cancer or other diseases that could confuse the end points	History of previous CABG; history of cardiogenic shock or cardiopulmonary resuscitation; ST-segment elevation acute MI during the preceding 48 h
Quality score ²	7	5	5	5

¹Propensity Matched Population.

²Criteria used for scoring: Proper Randomization (Score: 1 point), similarity of treatment groups in relevant variables at baseline (1 point), blinding of subjects and investigators (1 point for each), specified eligibility criteria (1 point), valid point estimates and measures of variability (1 point) and data on degree of compliance (1 point). More details in text. DM: Diabetes mellitus; CTO: Chronic total occlusion; PCI: Percutaneous coronary intervention; RCT: Randomized control trial; DES: Drug eluting stent; BMS: Bare metal stent; CABG: Coronary artery bypass grafting.

Three out of four studies *i.e.* Flores-Umanzor *et al*^[13], Choi *et al*^[14] and Yan *et al*^[15] provided data on risk of repeat MI. OMT was relatively safer in regards to occurrence of repeat MI as compared with PCI with a decreased HR, (HR: 0.53, 95%CI: 0.31-0.91, $P = 0.02$, Figure 3C). No heterogeneity was observed, $I^2 = 0\%$, $P = 0.87$.

For repeat revascularization, sub group analysis of OMT vs PCI revealed no difference in HR between the two groups. (HR: 1.00, 95%CI: 0.52-1.93, $P = 1.00$, Figure 3D).

DISCUSSION

In this meta-analysis of randomized controlled and observational studies comparing diabetic patients with CTOs, patients in the OMT group were found to have a higher risk of all-cause and cardiac death as compared to ER. We included 4 studies for a total of 2448 patients. 1252 patients were treated with OMT while 1196 patients underwent early revascularization. Damluji *et al*^[12] which is a post hoc analysis of the bypass angioplasty revascularization investigation 2 diabetes trial, evaluated the influence of CTO on long term clinical outcomes of patients with coronary artery disease and diabetes mellitus. We extracted the data for CTO only from Damluji *et al*^[12] to calculate mortality and morbidity outcomes in diabetics, however, our results were non-significant as shown in Figures 1A-1C further 3 observational studies were added to our meta-analysis to achieve the above results. We found that there was a trend of improved survival with ER either with CABG or PCI in terms of cardiac and all cause

Table 2 Percentage prevalence of co-morbidities across studies (actual prevalence in brackets)

Ref.	Damluji <i>et al</i> ^[12]		Flores-Umanzor <i>et al</i> ^[13]			Yan <i>et al</i> ^[15]		Choi <i>et al</i> ^[14]	
	OMT (n = 490)	ER (n = 482)	OMT (n = 326)	ER	ER	OMT (n = 118)	ER (n = 118)	OMT (n = 318)	ER (n = 384)
					PCI (n = 76)	CABG (n = 136)			
HTN	80 (385)	81 (387)	85 (276)	82 (62)	86 (117)	66.9 (79)	71.2 (84)	70.7 (225)	70.3 (270)
Previous MI	44 (214)	41 (197)	33 (108)	28 (21)	28 (21)	56.8 (67)	55.9 (66)	34.9 (111)	18.0 (69)
Prior CHF	7 (36)	9 (43)	-	-	-	14.4 (17)	10.2 (12)	-	-
Prior Stent/PCI	11 (56)	12 (59)	-	-	-	48.3 (57)	42.4 (50)	30.5 (97)	22.1 (85)
Prior CVA/TIA	10 (49)	10 (46)	-	-	-	5.1 (6)	5.9 (7)	12.3 (39)	11.2 (43)
Prior Revascularizatio	31 (151)	26 (124)	-	-	-	-	-	-	-
Previous CABG	-	-	14 (45)	5 (4)	4 (5)	-	-	0	0
HbA1c mean	7.4	7.3	7.6 ± 0.1	7.6 ± 0.2	7.3 ± 0.1	-	-	-	-
Dyslipidemia	83 (402)	84 (400)	75 (246)	71 (54)	74 (100)	51.7 (61)	50 (59)	21.7 (69)	31.3 (120)
Smoking	-	-	52 (169)	55 (42)	59 (80)	55.9 (66)	57.6 (68)	28.6 (91)	32.8 (126)
Peripheral vascular disease	-	-	45 (145)	33 (25)	35 (47)	3.4 (4)	3.4 (4)	6.0 (19)	3.4 (13)

¹Data given separately for percutaneous coronary intervention and Coronary Artery Bypass Grafting group. OMT: Optimal medical therapy; ER: Early revascularization; N: Number of subjects; PCI: Percutaneous coronary intervention; CABG: Coronary Artery Bypass Grafting; HTN: Hypertension; MI: Myocardial infarction; CHF: Heart failure; CVA: Cerebrovascular accident, HbA1c: Hemoglobin A1c.

Table 3 Chronic total occlusions location with number of chronic total occlusions lesions among studies in percentages (actual prevalence in brackets)

Ref.	Damluji <i>et al</i> ^[12]		Flores-Umanzor <i>et al</i> ^[13]		Yan <i>et al</i> ^[15]		Choi <i>et al</i> ^[14]	
	OMT	ER	OMT (n = 326)	ER (n = 212)	OMT (n = 118)	ER (n = 118)	OMT (n = 318)	ER (n = 384)
Number of CTO lesions								
1	-	-	80 (261)	75 (159)			-	-
2	-	-	79 (60)	24 (50)			-	-
3	-	-	1.5 (5)	1.4 (3)			-	-
CTO location								
LAD artery	-	-	18 (60)	24 (51)	30.5 (36)	28.0 (33)	26.4 (84)	38.5 (148)
LCX artery	-	-	19 (62)	20 (42)	28.0 (33)	26.3 (31)	36.5 (116)	29.2 (112)
RCA	-	-	52 (170)	47 (100)	41.5 (49)	45.8 (54)	56.3 (117)	47.9 (184)
Other coronary artery branches	-	-	10 (34)	9 (19)	-	-	-	-

LAD: Left anterior descending; LCX: Left circumflex; RCA: Right coronary artery; OMT: Optimal medical therapy; ER: Early revascularization; N: number of subjects.

death. To our knowledge, this is the first ever meta-analysis of clinical trials comparing morbidity and mortality outcomes in diabetic patients with a CTO. Our subgroup analysis also revealed poor performance of PCIs vs OMT in terms of incidence of combined fatal and non-fatal MI. Further stratification could not be performed due to paucity of data.

Given the complex nature and uncertainty regarding mortality or morbidity benefits from percutaneous or surgical revascularization, CTO lesions have been traditionally treated with OMT. Historically, the standard of care for revascularization of CTO lesions has been CABG with little evidence of superiority over OMT. However, with recent advancement in percutaneous techniques and greater operator experience along with better patient selection, there has been an increase in trend of CTO interventions in contemporary practice^[16,17]. Although observational data has shown a reduction in Major Adverse Cardiac Events, global left ventricular ejection fraction and quality of life after revascularization of CTO, results from these trials are inconsistent^[18,19].

Currently the global expert consensus statement recommends PCI revascularization for ischemic symptom improvement for which data is more unanimous^[20].

Diabetes mellitus is a major risk factor of CTO. Around 34%-40% of patients with CTO have a history of diabetes^[13] and there is a well-known association with worse outcomes from CTO in diabetics^[5-7,13]. Diabetes leads to endothelial cell dysfunction and changes in microcirculation, a prothrombotic/proinflammatory state along with impaired formation of coronary collaterals^[7,8,21]. This causes aggressive progression of atherosclerosis within the arterial bed including the coronary arteries leading to poorer outcomes in patients with CAD^[22]. PCI in diabetic patients also has a higher risk of in-stent restenosis, repeat revascularization, MI, stent thrombosis and death when compared to non-diabetics^[23-25].

By performing a post hoc analysis of the bypass angioplasty revascularization investigation 2 diabetes trial, Damluji *et al*^[12] was the first to compare clinical outcomes in patients with both diabetes and coronary artery disease. They found that a lot of diabetic patients with CAD had a high prevalence of CTOs, approximately 41%. Although the primary outcome studied was the effect of CTOs on mortality in diabetics with a strongly positive correlation, we extracted the data for the CTO subgroup only for our analysis and found that OMT was associated with a higher risk of all cause and cardiac mortality in diabetics. Patients undergoing early revascularization were also noted to have a lower risk of repeat MI and repeat revascularization at long term follow up. Damluji *et al*^[12] and Choi *et al*^[14] however did not perform a subgroup analysis on the revascularization modality chosen *i.e.*, CABG vs PCI.

Our subgroup analysis (OMT vs PCI) revealed inferiority of PCI as a revascularization strategy in terms of repeat MI and repeat revascularization to the combined PCI and CABG group. This discrepancy in results is an interesting observation from the PCI subset as compared to the combined revascularization pool. This could imply superiority of CABG over PCI in these patients but these results might be confounded by disease anatomy and various comorbidities. Studies designed to compare CABG and PCI for this purpose can be helpful in the future. Also, the current success rates of CTO-PCI in the general population are from 80%-85%, however the majority of our trials demonstrated a lower success rate^[26]. One possible explanation for this discrepancy could be recent advancements in percutaneous techniques and equipment, however it is well known that diabetic patients have a higher burden of CAD with more complex disease anatomy which might be difficult to completely re-vascularize^[27]. In a meta-analysis of 35 studies including 89883 patients, Garcia *et al*^[28] demonstrated that CABG was twice as likely as PCI to achieve complete revascularization in patients with CTOs. The study by Flores-Umanzor *et al*^[13] included in our meta-analysis also noted higher rates of anatomic and functional complete revascularization in CABG vs PCI patients (63% and 62% vs 36% and 32%, $P < 0.01$). Subsequently, they also reported statistically significant lower all-cause and cardiac mortality with CABG when compared to MT group but not with PCI.

Another important factor to consider in these patients is the presence or absence of chronic kidney disease (CKD). Studies have shown that renal dysfunction is an independent risk factor for cardiovascular disease, with higher mortality rates for both myocardial infarction and sudden cardiac death^[29,30]. Our patients in Choi *et al*^[14] and Yan *et al*^[15] were case-control matched according to the presence or absence of CKD, however, further data on this sub-group was not available for us to perform analysis. Similarly, the study referenced by Damluji *et al*^[12] excluded patients with a creatinine of 2.0 mg/dL or higher. Flores-Umanzor *et al*^[13] did not comment on CKD. Hopefully, further studies in the future shall enable us to look at the effect of CKD on clinical

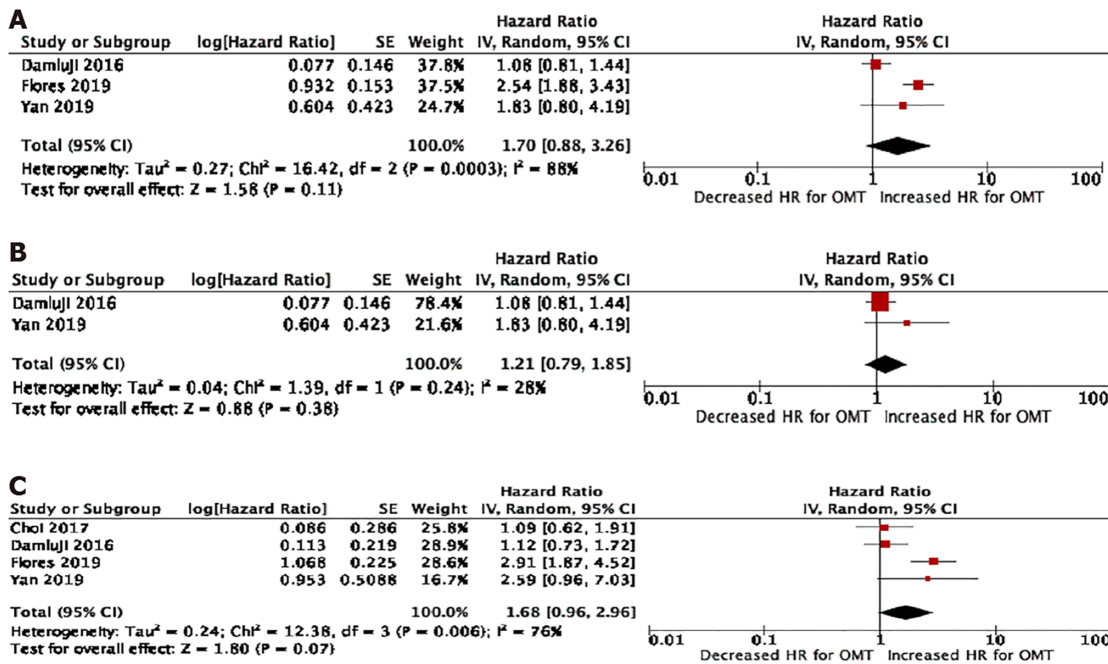


Figure 1 Random effects meta-analysis and forest plot of hazard ratios for all cause long term and cardiac mortality. A: All-cause Mortality; B: All-cause mortality after removing Flores-Umanzor *et al*^[13]; and C: Cardiac Mortality.

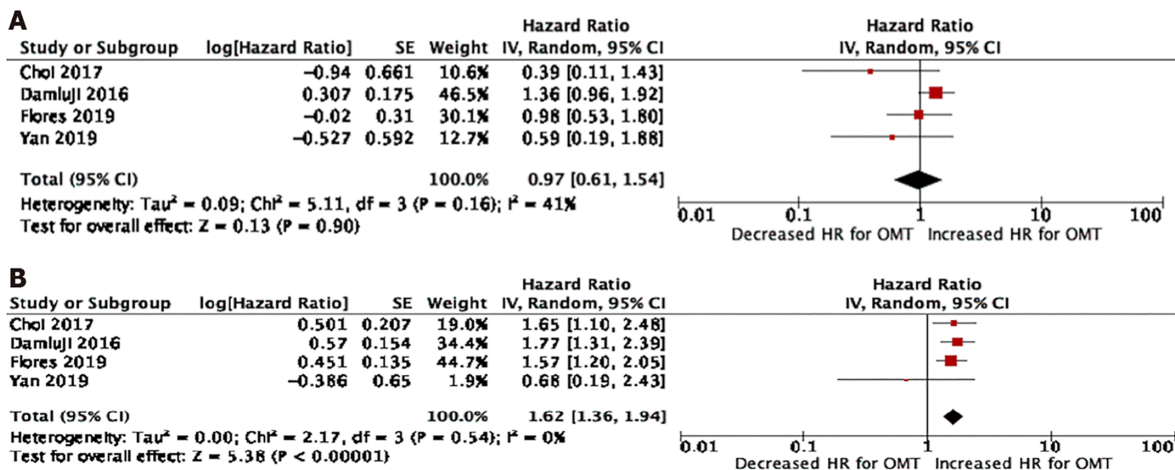


Figure 2 Random effects meta-analysis and forest plot of hazard ratios for repeat myocardial infarction and repeat revascularization. A: Repeat Myocardial Infarction; and B: Repeat revascularization.

outcomes in diabetics with CTO.

It is also not clear why revascularization in CTO is beneficial and associated with improved survival rates in diabetics. CTOs are usually associated with a larger scar and most of all with a bigger border zone which causes arrhythmias and sudden cardiac death in most patients^[31]. Thus, it might be the beneficial effects of early revascularization in preventing the formation of scar myocardium which may lead to improvement in mortality and morbidity. It also might be worthwhile to attempt CABG instead of PCI in patients with a difficult anatomy particularly in the diabetic sub group as these patients have a lower success rate as compared to the general population and might save unnecessary side effects from an unsuccessful procedure in itself.

Limitations

Our studies have various limitations. Because of the observational design of three out of four studies (Figures 1 and 2), there was an inherent risk of selection bias which

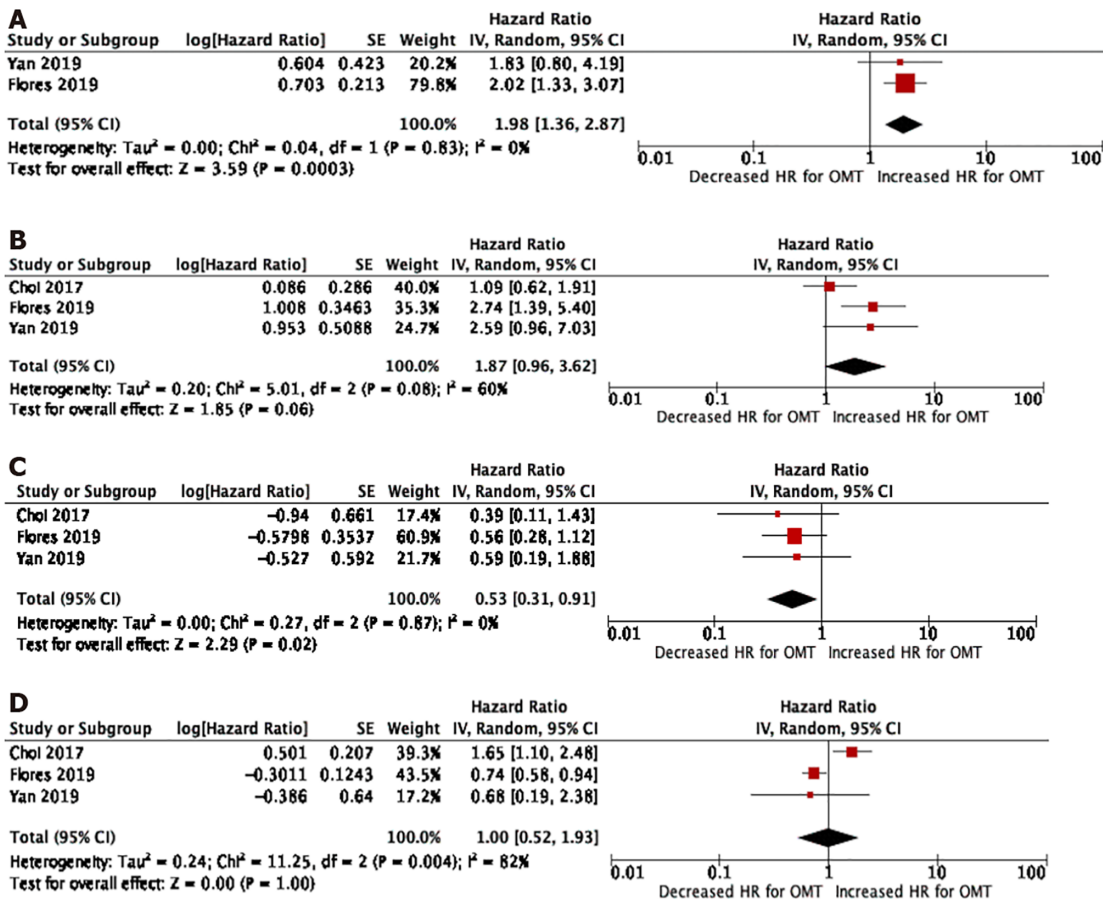


Figure 3 Sub-group analysis and forest plot of hazard ratios for all-cause and cardiac mortality, repeat mi and repeat revascularization. A: All-Cause Mortality; B: Cardiac mortality; C: Repeat myocardial infarction; and D: Repeat revascularization.

may have affected the results through confounding factors. One of the potential explanations for the mortality benefits with ER may be potential confounders as high-risk patients are less likely to undergo ER. This was reinstated across all studies as patients assigned to OMT were older and with more co-morbidities. A major concern for selection bias in Flores-Umanzor *et al*^[13] was the inclusion of failed PCI group into the medical therapy group as a failed PCI might itself be a risk factor for adverse events in the future. Yan and colleagues also only studied one vessel CTO but the other three studies also included more than one vessel CTO. Although this might not be significant as Flores-Umanzor *et al*^[13] demonstrated that in majority of patients, only one vessel was diseased with the most common culprit being the right coronary artery. The selection of only PCI as revascularization modality by Choi *et al*^[14] and Yan *et al*^[15] also introduced bias as patients treated with CABG were not studied. Significant heterogeneity was observed in some effect outcomes, however we used sensitivity analysis to analyze which study was causing the effect and recalculated data after dropping the study. Also, as with all met-analysis, the quality of the study is as good as the quality of the trials itself.

CONCLUSION

Despite our limitations, we report the results of the first meta-analysis specifically done on diabetic patients with CTO lesions treated with OMT vs ER. The results reveal a trend towards superiority of the ER group (PCI and CABG) to OMT in terms of all cause and cardiac death although we could not achieve statistical significance. These findings were reinforced on subgroup analysis of OMT vs PCI, specifically regards to all-cause death where the results were statistically significant. However, patients undergoing PCI had a higher risk of repeat fatal and non-fatal MI as compared to OMT and the risk for repeat revascularization was similar in both groups. Overall patients in the OMT only group had a higher risk of repeat revascularization

as compared to ER group (PCI and CABG). In patients with extensive CAD and CTO, CABG may be attempted as PCI in diabetics has a higher risk of failure as compared to non-diabetics. Further data including larger patient population from future studies is needed to clarify outcome benefits from revascularization or medical therapy in these patients.

ARTICLE HIGHLIGHTS

Research background

The thought process behind this manuscript was our motivation upon literature review of a scarcity of data involving clinical outcomes of diabetics with chronic total occlusion (CTO) of coronary vessels.

Research motivation

Our motivation came from the scarcity of data in this sub group of population. There exists a lot of literature comparing the mortality and morbidity outcomes of medical therapy (OMT) *vs* early re-vascularization [ER: Percutaneous coronary intervention (PCI) + Coronary artery bypass grafting] in patients with chronic total occlusions but none in the diabetic subset.

Research objectives

To compare the mortality and morbidity outcomes in diabetic population with CTO treated with OMT *vs* ER.

Research methods

Multiple electronic data-bases including Pubmed, Embase were searched involving human studies comparing OMT *vs* ER in patients having CTO of coronary vessels. Data was analyzed using Cochrane review manager with hazard ratios using the random effects model. Primary effect estimate was all cause mortality with secondary effect estimates as cardiac mortality, repeat myocardial infarction (MI) and repeat re-vascularization.

Research results

Statistical analysis revealed a higher risk for all-cause mortality, cardiac mortality and repeat re-vascularization in the OMT group. For repeat MI, data analysis revealed no significant differences in between the two groups. Sub-group analysis was also done for OMT *vs* PCI. This revealed a higher risk for all-cause mortality but not for cardiac mortality or repeat re-vascularization in the OMT group. Interestingly, patients in the OMT group were found to have a lower incidence of repeat MI *vs* PCI group.

Research conclusions

There is a trend towards superiority of the ER group as compared to OMT group in diabetic patients with a CTO. These findings were reinforced on sub-group analysis of OMT *vs* PCI.

Research perspectives

Despite our limitations, we present the first ever meta-analysis specifically involving diabetic patients only with CTO treated with OMT or ER. Although we were able to demonstrate a trend towards superiority of the ER group, this was not statistically significant for some sub-groups including all-cause and cardiac mortality. Although this manuscript provides a relatively new insight into management of such patients, further studies may be needed before a consensus is developed.

REFERENCES

- 1 Stone GW, Kandzari DE, Mehran R, Colombo A, Schwartz RS, Bailey S, Moussa I, Teirstein PS, Dangas G, Baim DS, Selmon M, Strauss BH, Tamai H, Suzuki T, Mitsudo K, Katoh O, Cox DA, Hoye A, Mintz GS, Grube E, Cannon LA, Reifart NJ, Reisman M, Abizaid A, Moses JW, Leon MB, Serruys PW. Percutaneous recanalization of chronically occluded coronary arteries: a consensus document: part I. *Circulation* 2005; **112**: 2364-2372 [PMID: 16216980 DOI: 10.1161/CIRCULATIONAHA.104.481283]
- 2 Sianos G, Werner GS, Galassi AR, Papafaklis MI, Escaned J, Hildick-Smith D, Christiansen EH, Gershlick A, Carlino M, Karlas A, Konstantinidis NV, Tomasello SD, Di Mario C, Reifart N; EuroCTO Club.

- Recanalisation of chronic total coronary occlusions: 2012 consensus document from the EuroCTO club. *EuroIntervention* 2012; **8**: 139-145 [PMID: 22580257 DOI: 10.4244/EIJV8I1A21]
- 3 **Fefer P**, Knudtson ML, Cheema AN, Galbraith PD, Oshero AB, Yalonetsky S, Gannot S, Samuel M, Weisbrod M, Bierstone D, Sparkes JD, Wright GA, Strauss BH. Current perspectives on coronary chronic total occlusions: the Canadian Multicenter Chronic Total Occlusions Registry. *J Am Coll Cardiol* 2012; **59**: 991-997 [PMID: 22402070 DOI: 10.1016/j.jacc.2011.12.007]
 - 4 **Valenti R**, Marrani M, Cantini G, Migliorini A, Carrabba N, Vergara R, Cerisano G, Parodi G, Antoniucci D. Impact of chronic total occlusion revascularization in patients with acute myocardial infarction treated by primary percutaneous coronary intervention. *Am J Cardiol* 2014; **114**: 1794-1800 [PMID: 25438904 DOI: 10.1016/j.amjcard.2014.09.016]
 - 5 **Allahwala UK**, Jolly SS, Džavík V, Cairns JA, Kedev S, Balasubramanian K, Stankovic G, Moreno R, Valettas N, Bertrand O, Lavi S, Velianou JL, Sheth T, Meeks B, Brilakis ES, Bhindi R. The Presence of a CTO in a Non-Infarct-Related Artery During a STEMI Treated With Contemporary Primary PCI Is Associated With Increased Rates of Early and Late Cardiovascular Morbidity and Mortality: The CTO-TOTAL Substudy. *JACC Cardiovasc Interv* 2018; **11**: 709-711 [PMID: 29622151 DOI: 10.1016/j.jcin.2017.12.005]
 - 6 **Mashaly A**, Rha SW, Choi BG, Baek MJ, Ryu YG, Choi SY, Byun JK, Li H, Shim MS, Jang WY, Kim W, Kang JH, Park EJ, Choi JY, Na JO, Choi CU, Lim HE, Kim EJ, Park CG, Seo HS, Oh DJ. Impact of diabetes mellitus on 5-year clinical outcomes in patients with chronic total occlusion lesions. *Coron Artery Dis* 2018; **29**: 119-126 [PMID: 28938238 DOI: 10.1097/MCA.0000000000000562]
 - 7 **Haffner SM**, Lehto S, Rönnemaa T, Pyörälä K, Laakso M. Mortality from coronary heart disease in subjects with type 2 diabetes and in nondiabetic subjects with and without prior myocardial infarction. *N Engl J Med* 1998; **339**: 229-234 [PMID: 9673301 DOI: 10.1056/NEJM199807233390404]
 - 8 **Abaci A**, Oğuzhan A, Kahraman S, Eryol NK, Unal S, Arınc H, Ergin A. Effect of diabetes mellitus on formation of coronary collateral vessels. *Circulation* 1999; **99**: 2239-2242 [PMID: 10226087 DOI: 10.1161/01.cir.99.17.2239]
 - 9 **Kirschbaum SW**, Baks T, van den Ent M, Sianos G, Krestin GP, Serruys PW, de Feyter PJ, van Geuns RJ. Evaluation of left ventricular function three years after percutaneous recanalization of chronic total coronary occlusions. *Am J Cardiol* 2008; **101**: 179-185 [PMID: 18178403 DOI: 10.1016/j.amjcard.2007.07.060]
 - 10 **Moher D**, Liberati A, Tetzlaff J, Altman DG; PRISMA Group. Reprint--preferred reporting items for systematic reviews and meta-analyses: the PRISMA statement. *Phys Ther* 2009; **89**: 873-880 [PMID: 19723669]
 - 11 **Verhagen AP**, de Vet HC, de Bie RA, Kessels AG, Boers M, Bouter LM, Knipschild PG. The Delphi list: a criteria list for quality assessment of randomized clinical trials for conducting systematic reviews developed by Delphi consensus. *J Clin Epidemiol* 1998; **51**: 1235-1241 [PMID: 10086815 DOI: 10.1016/s0895-4356(98)00131-0]
 - 12 **Damluji AA**, Pomenti SF, Ramireddy A, Al-Damluji MS, Alfonso CE, Schob AH, Marso SP, Gilchrist IC, Moscucci M, Kandzari DE, Cohen MG. Influence of Total Coronary Occlusion on Clinical Outcomes (from the Bypass Angioplasty Revascularization Investigation 2 Diabetes Trial). *Am J Cardiol* 2016; **117**: 1031-1038 [PMID: 26853953 DOI: 10.1016/j.amjcard.2015.12.047]
 - 13 **Flores-Umanzor EJ**, Cepas-Guillen PL, Vázquez S, Fernandez-Valledor A, Ivey-Miranda J, Izquierdo M, Caldentey G, Jimenez-Britez G, Regueiro A, Freixa X, Farrero M, Ferreira-González I, Martin-Yuste V, Sabaté M. Survival benefit of revascularization vs optimal medical therapy alone for chronic total occlusion management in patients with diabetes. *Catheter Cardiovasc Interv* 2020; Online ahead of print [PMID: 32096926 DOI: 10.1002/ccd.28815]
 - 14 **Choi KH**, Yang JH, Song YB, Hahn JY, Choi JH, Gwon HC, Lee SH, Choi SH. Long-term clinical outcomes of patients with coronary chronic total occlusion treated with percutaneous coronary intervention vs medical therapy according to presence of diabetes mellitus. *EuroIntervention* 2017; **13**: 970-977 [PMID: 28169213 DOI: 10.4244/EIJ-D-16-00737]
 - 15 **Yan Y**, Yuan F, Liu H, Xu F, Zhang M, Wang W, Zhang M, Tian J, Cui K, Zhou K, Chen L, Lyu S. Percutaneous Coronary Intervention Offers Survival Benefit to Stable Patients With One Single Chronic Total Occlusion and Diabetes: A Propensity Score-Matched Analysis. *Angiology* 2020; **71**: 150-159 [PMID: 31709819 DOI: 10.1177/0003319719885301]
 - 16 **Christofferson RD**, Lehmann KG, Martin GV, Every N, Caldwell JH, Kapadia SR. Effect of chronic total coronary occlusion on treatment strategy. *Am J Cardiol* 2005; **95**: 1088-1091 [PMID: 15842978 DOI: 10.1016/j.amjcard.2004.12.065]
 - 17 **Konstantinidis NV**, Werner GS, Devereux S, Di Mario C, Galassi AR, Buettner JH, Avran A, Reifart N, Goktekin O, Garbo R, Bufe A, Mashayekhi K, Boudou N, Meyer-Geßner M, Lauer B, Elhadad S, Christiansen EH, Escaned J, Hildick-Smith D, Carlino M, Louvard Y, Lefèvre T, Angelis L, Giannopoulos G, Sianos G; Euro CTO Club. Temporal Trends in Chronic Total Occlusion Interventions in Europe. *Circ Cardiovasc Interv* 2018; **11**: e006229 [PMID: 30354635 DOI: 10.1161/CIRCINTERVENTIONS.117.006229]
 - 18 **Christakopoulos GE**, Christopoulos G, Carlino M, Jeroudi OM, Roesle M, Rangan BV, Abdullah S, Grodin J, Kumbhani DJ, Vo M, Luna M, Alaswad K, Karpaliotis D, Rinfret S, Garcia S, Banerjee S, Brilakis ES. Meta-analysis of clinical outcomes of patients who underwent percutaneous coronary interventions for chronic total occlusions. *Am J Cardiol* 2015; **115**: 1367-1375 [PMID: 25784515 DOI: 10.1016/j.amjcard.2015.02.038]
 - 19 **Antoniucci D**, Valenti R, Migliorini A, Parodi G. Long-term follow-up of elective chronic total coronary occlusion angioplasty. *J Am Coll Cardiol* 2014; **64**: 2709 [PMID: 25524351 DOI: 10.1016/j.jacc.2014.08.050]
 - 20 **Werner GS**, Martin-Yuste V, Hildick-Smith D, Boudou N, Sianos G, Gelev V, Rumoroso JR, Erglis A, Christiansen EH, Escaned J, di Mario C, Hovasse T, Teruel L, Bufe A, Lauer B, Bogaerts K, Goicolea J, Spratt JC, Gershlick AH, Galassi AR, Louvard Y; EUROCTO trial investigators. A randomized multicentre trial to compare revascularization with optimal medical therapy for the treatment of chronic total coronary

- occlusions. *Eur Heart J* 2018; **39**: 2484-2493 [PMID: 29722796 DOI: 10.1093/eurheartj/ehy220]
- 21 **Schofield I**, Malik R, Izzard A, Austin C, Heagerty A. Vascular structural and functional changes in type 2 diabetes mellitus: evidence for the roles of abnormal myogenic responsiveness and dyslipidemia. *Circulation* 2002; **106**: 3037-3043 [PMID: 12473548 DOI: 10.1161/01.cir.0000041432.80615.a5]
 - 22 **Katakami N**. Mechanism of Development of Atherosclerosis and Cardiovascular Disease in Diabetes Mellitus. *J Atheroscler Thromb* 2018; **25**: 27-39 [PMID: 28966336 DOI: 10.5551/jat.RV17014]
 - 23 **Kip KE**, Faxon DP, Detre KM, Yeh W, Kelsey SF, Currier JW. Coronary angioplasty in diabetic patients. The National Heart, Lung, and Blood Institute Percutaneous Transluminal Coronary Angioplasty Registry. *Circulation* 1996; **94**: 1818-1825 [PMID: 8873655 DOI: 10.1161/01.cir.94.8.1818]
 - 24 **Koskinas KC**, Siontis GC, Piccolo R, Franzone A, Haynes A, Rat-Wirtzler J, Silber S, Serruys PW, Pilgrim T, Räber L, Heg D, Jüni P, Windecker S. Impact of Diabetic Status on Outcomes After Revascularization With Drug-Eluting Stents in Relation to Coronary Artery Disease Complexity: Patient-Level Pooled Analysis of 6081 Patients. *Circ Cardiovasc Interv* 2016; **9**: e003255 [PMID: 26823484 DOI: 10.1161/CIRCINTERVENTIONS.115.003255]
 - 25 **Shahian DM**, O'Brien SM, Sheng S, Grover FL, Mayer JE, Jacobs JP, Weiss JM, Delong ER, Peterson ED, Weintraub WS, Grau-Sepulveda MV, Klein LW, Shaw RE, Garratt KN, Moussa ID, Shewan CM, Dangas GD, Edwards FH. Predictors of long-term survival after coronary artery bypass grafting surgery: results from the Society of Thoracic Surgeons Adult Cardiac Surgery Database (the ASCERT study). *Circulation* 2012; **125**: 1491-1500 [PMID: 22361330 DOI: 10.1161/CIRCULATIONAHA.111.066902]
 - 26 **Tajti P**, Karpaliotis D, Alaswad K, Jaffer FA, Yeh RW, Patel M, Mahmud E, Choi JW, Burke MN, Doing AH, Dattilo P, Toma C, Smith AJC, Uretsky B, Holper E, Wyman RM, Kandzari DE, Garcia S, Krestyaninov O, Khelinskii D, Koutouzis M, Tsiafoutis I, Moses JW, Lembo NJ, Parikh M, Kirtane AJ, Ali ZA, Doshi D, Rangan BV, Ungi I, Banerjee S, Brilakis ES. The Hybrid Approach to Chronic Total Occlusion Percutaneous Coronary Intervention: Update From the PROGRESS CTO Registry. *JACC Cardiovasc Interv* 2018; **11**: 1325-1335 [PMID: 29706508 DOI: 10.1016/j.jcin.2018.02.036]
 - 27 **Natali A**, Vichi S, Landi P, Severi S, L'Abbate A, Ferrannini E. Coronary atherosclerosis in Type II diabetes: angiographic findings and clinical outcome. *Diabetologia* 2000; **43**: 632-641 [PMID: 10855538 DOI: 10.1007/s001250051352]
 - 28 **Garcia S**, Sandoval Y, Roukoz H, Adabag S, Canoniero M, Yannopoulos D, Brilakis ES. Outcomes after complete *vs* incomplete revascularization of patients with multivessel coronary artery disease: a meta-analysis of 89,883 patients enrolled in randomized clinical trials and observational studies. *J Am Coll Cardiol* 2013; **62**: 1421-1431 [PMID: 23747787 DOI: 10.1016/j.jacc.2013.05.033]
 - 29 **Selby NM**, Kolhe NV, McIntyre CW, Monaghan J, Lawson N, Elliott D, Packington R, Fluck RJ. Defining the cause of death in hospitalised patients with acute kidney injury. *PLoS One* 2012; **7**: e48580 [PMID: 23133643 DOI: 10.1371/journal.pone.0048580]
 - 30 **Di Lullo L**, House A, Gorini A, Santoboni A, Russo D, Ronco C. Chronic kidney disease and cardiovascular complications. *Heart Fail Rev* 2015; **20**: 259-272 [PMID: 25344016 DOI: 10.1007/s10741-014-9460-9]
 - 31 **Di Marco A**, Paglino G, Oloriz T, Maccabelli G, Baratto F, Vergara P, Biscaglia C, Anguera I, Sala S, Sora N, Dallaglio P, Marzi A, Trevisi N, Mazzone P, Della Bella P. Impact of a chronic total occlusion in an infarct-related artery on the long-term outcome of ventricular tachycardia ablation. *J Cardiovasc Electrophysiol* 2015; **26**: 532-539 [PMID: 25598359 DOI: 10.1111/jce.12622]



Published by **Baishideng Publishing Group Inc**
7041 Koll Center Parkway, Suite 160, Pleasanton, CA 94566, USA
Telephone: +1-925-3991568
E-mail: bpgoffice@wjgnet.com
Help Desk: <https://www.f6publishing.com/helpdesk>
<https://www.wjgnet.com>

