



# Plasma BCAA concentrations during exercise of varied intensities in young healthy men—the impact of endurance training

Anna Gawedzka<sup>1,2</sup>, Marcin Grandys<sup>1</sup>, Krzysztof Duda<sup>1,3</sup>, Justyna Zapart-Bukowska<sup>1</sup>, Jerzy A. Zoladz<sup>1</sup> and Joanna Majerczak<sup>4</sup>

<sup>1</sup> Department of Muscle Physiology, Institute of Basic Sciences, Faculty of Rehabilitation, University School of Physical Education in Krakow, Krakow, Poland

<sup>2</sup> Department of Biochemical Analytics, Faculty of Pharmacy, Jagiellonian University, Medical College, Krakow, Poland

<sup>3</sup> Institute of Health Care, State Higher Vocational School in Tarnow, Tarnow, Poland

<sup>4</sup> Department of Neurobiology, Faculty of Health Sciences, Poznan University School of Physical Education in Poznan, Poznan, Poland

## ABSTRACT

**Background.** Branched-chain amino acids (BCAA) i.e., leucine (Leu), isoleucine (Ile) and valine (Val) are important amino acids, which metabolism play a role in maintaining system energy homeostasis at rest and during exercise. As recently shown lowering of circulating BCAA level improves insulin sensitivity and cardiac metabolic health. However, little is known concerning the impact of a single bout of incremental exercise and physical training on the changes in blood BCAA. The present study aimed to determine the impact of a gradually increasing exercise intensity—up to maximal oxygen uptake ( $VO_{2max}$ ) on the changes of the plasma BCAA  $[\sum BCAA]_{pl}$ , before and after 5-weeks of moderate-intensity endurance training (ET).

**Methods.** Ten healthy young, untrained men performed an incremental cycling exercise test up to exhaustion to reach  $VO_{2max}$ , before and after ET.

**Results.** We have found that exercise of low-to-moderate intensity (up to  $\sim 50\%$  of  $VO_{2max}$  lasting about 12 min) had no significant effect on the  $[\sum BCAA]_{pl}$ , however the exercise of higher intensity (above  $70\%$  of  $VO_{2max}$  lasting about 10 min) resulted in a pronounced decrease ( $p < 0.05$ ) in  $[\sum BCAA]_{pl}$ . The lowering of plasma BCAA when performing exercise of higher intensity was preceded by a significant increase in plasma lactate concentration, showing that a significant attenuation of BCAA during incremental exercise coincides with exercise-induced acceleration of glycogen utilization. In addition, endurance training, which significantly increased power generating capabilities at  $VO_{2max}$  ( $p = 0.004$ ) had no significant impact on the changes of  $[\sum BCAA]_{pl}$  during this incremental exercise.

**Conclusion.** We have concluded that an exercise of moderate intensity of relatively short duration generally has no effect on the  $[\sum BCAA]_{pl}$  in young, healthy men, whereas significant decrease in  $[\sum BCAA]_{pl}$  occurs when performing exercise in heavy-intensity domain. The impact of exercise intensity on the plasma BCAA concentration seems to be especially important for patients with cardiometabolic risk undertaken cardiac rehabilitation or recreational activity.

Submitted 2 September 2020

Accepted 13 November 2020

Published 21 December 2020

Corresponding author

Joanna Majerczak,  
majerczak@awf.poznan.pl

Academic editor

Kenichi Shibuya

Additional Information and  
Declarations can be found on  
page 19

DOI 10.7717/peerj.10491

© Copyright  
2020 Gawedzka et al.

Distributed under  
Creative Commons CC-BY 4.0

OPEN ACCESS

**Subjects** Anatomy and Physiology, Public Health

**Keywords** BCAA, Incremental exercise, Endurance training, Maximal oxygen uptake

## INTRODUCTION

Amino acids in human body are present mainly in the form of proteins, most of which are contained in skeletal muscles (40–45% of total body protein pool), whereas the pool of free amino acids constitutes less than 2% of total body amino acids. Among the essential amino acids (which cannot be synthesized from other metabolites in human body), the branched-chain amino acids (BCAA) i.e., leucine (Leu), isoleucine (Ile) and valine (Val), are the most relevant amino acids metabolized during exercise (*Wagenmakers et al., 1989*). Interestingly, circulating BCAA constitute also a biomarker of cardiometabolic diseases (*Batch et al., 2013; White & Newgard, 2019*). As suggested recently, BCAA by promoting lipid storage in liver and in skeletal muscles contribute to insulin resistance (*White & Newgard, 2019*). The genetic association studies by *Lotta et al. (2016)* shown strong relationship between higher circulating level of BCAA and type 2 diabetes in humans. In addition, *Wang et al. (2011)* found that five circulating branched-chain and aromatic amino acids (including leucine, isoleucine, valine, tyrosine and phenylalanine) might be used as early markers of diabetes risk. On the other hand, restriction of dietary BCAA by lowering of circulating BCAA levels improves whole-body and skeletal muscle insulin sensitivity in obese rats (*White et al., 2016*) and lowers lipid accumulation in their hearts, which has positive impact on cardiometabolic health (*McGarrah et al., 2020*).

It is well known that regular exercise exerts beneficial effects on the human general health including an improvement of insulin sensitivity (*Holloszy, 2005*). Since skeletal muscle accounts for about 60–80% of postprandial insulin-mediated glucose uptake (*Meyer et al., 2002; Soulage et al., 2018*), muscle insulin resistance play a key role in the disturbances in glucose homeostasis. Considering the role of BCAA in the insulin resistance and taking into account that skeletal muscles is a major tissue that utilizes BCAA, BCAA oxidation during exercise might have an important impact on the maintaining glucose homeostasis. Specifically, a lowering of circulating BCAA concentration during exercise, which reflects an increase of the BCAA uptake and an enhancement of BCAA catabolism by skeletal muscles during exercise, decreases the risk of an accumulation of BCAA catabolic intermediates, which are known to be involved in the lipid accumulation contributing to muscle insulin resistance (*White & Newgard, 2019*). As was recently found, 3-Hydroxyisobutyrate (3-HIB), a catabolic intermediate of valine, is indeed positively correlated with insulin resistance in humans (*Nilsen et al., 2020*).

During exercise BCAA release from splanchnic bed increases and is accompanied by an elevated BCAA uptake by contracting muscles and by an enhancement of BCAA oxidation therein (*Wagenmakers et al., 1989*). The mechanism responsible for BCAA oxidation in skeletal muscles is attributed to activation of the branched-chain  $\alpha$ -keto acid dehydrogenase (BCKDH) complex – rate limiting enzyme of branched-chain oxoacid oxidation (*Wagenmakers et al., 1989; Van Hall et al., 1996*). It is generally believed that BCAA are used as an energy substrate mainly during prolonged exercise (*Blomstrand,*

*Celsing & Newsholme, 1988*) and might provide about 3–6% of the total energy demand (*Gibala, 2007*). A significant decrease in plasma BCAA concentration in bloodstream has been observed after sustained exercise (lasting about 1.5 h) as well as after marathon run (*Blomstrand, Celsing & Newsholme, 1988*). It has been found that prolonged exercise (90 and 120 min duration) at 50–70% maximal power output increases the percentage of active BCKDH in human skeletal muscle by 2- to 5-fold (*Wagenmakers et al., 1989*), which suggests greater BCAA usage during prolonged exercise.

However, to our best knowledge no data has been presented so far showing the changes of plasma BCAA concentration in varied exercise intensity domains (moderate vs heavy exercise intensity) during incremental exercise. Incremental exercise tests are commonly applied exercise protocols allowing to study physiological responses to varied exercise intensities and to determine key features of exercise tolerance such as lactate threshold (LT), maximal oxygen uptake ( $VO_{2max}$ ), power output at maximal oxygen uptake ( $PO_{max}$ ) (*Majerczak et al., 2014; Zoladz, Rademaker & Sargeant, 1995*).

Therefore, in the present study we determined the changes in plasma BCAA concentration during the moderate (up to 50% of  $VO_{2max}$ ) and heavy-intensity (above 70% of  $VO_{2max}$ ) exercise domains. We hypothesized that a strenuous exercise even of short duration is accompanied by a significantly greater decrease in plasma BCAA concentration than low-to-moderate intensity exercise. Moreover, we aim to establish the effect of 5-week moderate-intensity endurance training (often used in rehabilitation or as a part of therapy in patients) on the plasma BCAA concentration in relation to exercise tolerance, since the impact of endurance training on the BCAA concentration reported in previous studies is not clear (*Lamont, McCullough & Kalhan, 1999; McKenzie et al., 2000*). Gaining the missing knowledge on the impact of physical exercise of varied intensities and training on the circulating BCAA in humans seems to be especially important in view of the studies showing a link between the blood BCAA level and cardiometabolic risk (*White & Newgard, 2019*).

## MATERIALS & METHODS

### Ethical approval

The study was approved by Local Ethical Committee in Krakow (No. 9 KBL/OIL/2009) and performed according to guidelines of the Declaration of Helsinki. All volunteers provided written consent for participation in the study after becoming acquainted with the procedures and purpose of the study.

### Subjects and study design

The studied group consisted of 10 healthy, non-smoking, untrained but recreationally active, young men (mean  $\pm$  SEM: age  $22.3 \pm 0.4$  years; body mass (BM)  $79.9 \pm 2.7$  kg; height  $181.0 \pm 2.0$  cm; body mass index (BMI)  $24.3 \pm 0.6$  kg m<sup>-2</sup>;  $VO_{2max}$   $45.6 \pm 1.2$  mL kg<sup>-1</sup> min<sup>-1</sup>), who submitted written consent to participate in the study. Before the experiment, participants were asked to follow a normal mixed diet during three days prior to the exercise test that was composed of ~55% of carbohydrates, ~25% of fat and ~20% of protein, and to avoid caffeinated and alcoholic beverages 48 h before exercise.

All participants were informed that lifestyle changes may potentially affect the outcome of this study, therefore, they were instructed to maintain their routine diet and asked not to take any dietary supplements throughout the experiment.

The study started with a medical health examination and basic anthropometric measurements. Blood analysis was performed in each subject including morphological and biochemical parameters (see below). Then, subjects performed incremental exercise up to exhaustion to determine exercise tolerance parameters including lactate threshold,  $VO_{2max}$  and  $PO_{max}$ . During the incremental exercise blood samples were taken to analyze plasma lactate and BCAA concentration. Based on this exercise test, the training intensities were established individually for each subject and the 5-week endurance training of moderate-intensity has started. After the training program, anthropometric measurements, incremental exercise test and blood analyses were repeated (see below).

### Exercise protocol

Subjects performed an incremental exercise on the cycloergometer Jaeger Ergo-Line GmbH and Co KG800s (Bitz, Germany) at pedaling rates of  $60 \text{ rev min}^{-1}$ . The subjects were familiarized with the laboratory conditions and the exercise test about 3 days before the onset of this study. The exercise test was preceded by a 6-minute resting period, after which the power output (PO) was increased by 30 W every 3 min until exhaustion. During exercise test gas exchange parameters were recorded continuously breath-by-breath using the Oxycon Champion, Mijnhardt BV (Bunnik, The Netherlands) starting from the 6 min before the test, up to 6 min after its ending ([Majerczak et al., 2010](#); [Zoladz, Rademaker & Sargeant, 1995](#); [Zoladz et al., 1998](#)). The incremental exercise test was performed to determine e.g.,  $VO_{2max}$ ,  $PO_{max}$  and LT. The following criteria of reaching  $VO_{2max}$  during incremental test have been applied: (1) at the end of the test a plateauing in  $VO_2$  in relation to the increase in the power output was evident, (2) at the end of exercise the heart rate (HR) was close to the age-predicted maximum (i.e., above 95% of predicted  $HR_{max}$ ), (3) the end-exercise plasma lactate concentration ( $[La^-]_{pl}$ ) reached value above eight  $\text{mmol L}^{-1}$  and the end-exercise respiratory quotient was above 1.10. The incremental test was performed two days before and two days after five weeks of endurance training.

### Endurance training protocol

Endurance training program was performed on cycloergometers Monark 874 E (Monark Exercise AB, Vansbro, Sweden), four times per week throughout 5 weeks, at the pedaling rates  $60 \text{ rev min}^{-1}$ . All participants were subjected to two different kinds of training exercise protocols. The first training exercise protocol consisted of continuous endurance cycling at the power output corresponding to 90% of the  $VO_2$  found at the previously determined lactate threshold. The second (intermittent endurance cycling) consisted of 6 min of unloaded cycling followed by a 3 min exercise bout performed at the power output corresponding to 50%  $\Delta$  (50% difference between the power output reached at  $VO_{2max}$  ( $PO_{max}$ ) and the power output obtained at the LT ( $PO$  at LT)), repeated 4 times and finished with 4 min of unloaded cycling. Duration of each training bout equalled 40 min and the scaling of the training intensity was based on the principle that the main

training workload should be performed in the moderate-intensity domain i.e., below the LT (*Whipp, 1996*). In this study over 80% of the training workloads were of moderate intensity i.e., they were performed with an intensity corresponding to about 68% of maximum heart rate ( $HR_{max}$ ) (about 50% of  $VO_{2max}$ ), whereas some of the training workloads (~15%) were planned to be performed in the heavy-intensity domain i.e., above the LT (*Whipp, 1996*). The continuous endurance cycling was performed on Tuesdays and Thursdays, and the intermittent endurance cycling on Mondays and Fridays. Each training session was monitored using a heart rate monitor (Polar S810, Finland) and supervised by at least one member of the research team. During the 5 weeks training period, volunteers performed on average  $19.8 \pm 0.2$  training sessions ( $9.9 \pm 0.1$  sessions of continuous endurance cycling in the moderate-intensity domain and  $9.9 \pm 0.1$  sessions of intermittent endurance cycling in the heavy-intensity domain), and the total training time amounted to  $13.2 \pm 0.1$  h. Compliance with the training program was excellent and amounted to  $99 \pm 1\%$  (only one subject missed two training sessions, because of short-term stomach problems). The details of the training program were described previously (*Grandys et al., 2009; Majerczak et al., 2010*).

## Measurements

### ***Anthropometric measurements***

Body mass was measured using standard anthropometric equipment (Radwag WPT 150, Radom, Poland), with the participants lightly clothed and shoeless. Body fat percentage was estimated using skinfold thickness measurements at the non-dominant upper arm triceps and subscapular sites. The measurements were performed by the same investigator with a calibrated skinfold caliper to the nearest 0.1 mm. The skinfold value was determined as the logarithm value of the sum of the thickness in mm at the two sites and body fat content was calculated using equation given by *Hassager et al. (1986)*. Body fat percentage can be calculated using this equation with a standard error of estimate (SEE) of 2.2 kg (2.8%).

### ***Blood morphology and clinical chemistry parameters analysis***

Blood samples for the assessment of basal hematological and biochemical variables were taken in the fasting state from the antecubital vein. In addition, before, during and at the end of incremental exercise blood samples were taken from the antecubital vein (in a fed state, see below) via Abbot Int-Catheter, Ireland (18G/1.2 × 45 mm) for plasma lactate and plasma amino acids determination. Blood for complete blood count (CBC) was collected in tubes containing EDTA, placed in a rocker for 30 min and stored in 4 °C, up to 24 h, until analysis. Blood for parameters analyzed in plasma (pl), that is, glucose, insulin and BCAA, was collected in plain tubes containing EDTA. Blood for plasma lactate  $[La^-]_{pl}$  analysis was collected in tubes containing 1 mg ammonium oxalate and 5 mg sodium fluoride. Blood samples after mixing were centrifuged at 653 g for 15 min at 4 °C. Blood for parameters analyzed in serum (s), that is, sodium ( $Na^+$ ), potassium ( $K^+$ ), creatinine and urea, was collected in plain tubes with a clotting activator and left to clot for a minimum of 30 min at room temperature. Then, samples were centrifuged at 1,469 g for 10 min at 4 °C. Plasma and serum were stored at -80 °C until analysis.

Basal blood samples for measurements of blood variables: CBC (complete blood count),  $\text{Na}^+$ ,  $\text{K}^+$ , urea, glucose and insulin, were taken at rest in the fasting state between 7:30 and 8:00 a.m. The hematology (CBC) and biochemical ( $\text{Na}^+$ ,  $\text{K}^+$ , urea, creatinine) tests were performed as described previously (*Grandys et al., 2009*). Plasma glucose was measured by enzymatic method (Vitros 950, Johnson and Johnson, USA) with the precision less than 1.5%. Insulin was measured by IRMA using the INS-IRMA kit (BioSource, Belgium). Analytical sensitivity for this measurement was 1 IU/ml and intra- and inter-assay CV were < 2.4% and 6.8%. For IRMA method the radioactivity of the samples were measured by using gamma scintillation counter (Wallac, Finland).

Blood samples (0.5 mL) for plasma lactate measurement  $[\text{La}^-]_{\text{pl}}$  were taken before incremental exercise test (at rest, i.e., ~2–3 h after light meal), at the end of each exercise intensity during incremental exercise just before the next increment of power output and at the end of the exercise protocol i.e., at exhaustion.  $[\text{La}^-]_{\text{pl}}$  was analyzed by enzymatic method (Vitros 950, Johnson and Johnson, USA) as described previously (*Majerczak et al., 2010*) with precision less than 1.4%.

### **Plasma amino acids measurements**

In the present study we aimed to determine the plasma amino acids concentrations (including BCAA) before exercise and during incremental exercise at strictly defined exercise intensities. The blood samples (1 mL) were taken at rest (pre-exercise) and at the power outputs corresponding to moderate exercise intensity (below LT), amounting in our study to 120 W (~50% of  $\text{VO}_{2\text{max}}$ ), heavy exercise intensity (between LT and  $\text{PO}_{\text{max}}$ ), amounting in our study to 180 W (~70% of  $\text{VO}_{2\text{max}}$ ), and at the maximal exercise intensity during the incremental exercise (at 100% of  $\text{VO}_{2\text{max}}$ ), amounting in our study to ~264 vs 286 W, respectively before and after the training programme. In the light of the study by *Felig & Wahren (1971)*, *Bergström, Fürst & Hultman (1985)* and *Eriksson et al. (1985)* a short-term exercise of low-to-moderate intensity should not lead to significant changes in BCAA concentration, but exercise of heavy intensity may affect their plasma concentrations. Total plasma  $\alpha$ -amino acids concentration (including nonessential amino acids: alanine, arginine, asparagine, aspartate, glutamine, glutamate, glycine, proline, serine and tyrosine; essential amino acids: histidine, isoleucine, leucine, lysine, methionine, phenylalanine, threonine and valine) were determined using by Pico-Tag method. The Waters Chemistry Package for Free Amino Acid Analysis and the Ultrafiltration Sample Prep Kit (Waters, Milford, MA, USA) were used to perform the Pico-Tag method. 200  $\mu\text{L}$  of plasma was mixed in a 1:1 ratio with the internal standard solution (methionine sulfone, 0.4mM in 0.1 M HCl) and filtrated using the Amicon MPS-1 ultrafiltration device. After filtration samples were reconstructed with drying solution consisting of a 2:2:1 mixture of methanol: 1 M sodium acetate: triethylamine (TEA), dried under vacuum and dissolved in 20  $\mu\text{L}$  of derivatization reagent (7:1:1:1 solution of methanol: triethylamine (TEA): water: phenylisothiocyanate (PITC)). The derivatization process lasted for 20 min at room temperature and produced the corresponding phenylthiocarbonyl (PITC) derivatives. After derivatization samples were dried in vacuum and finally dissolved in 100  $\mu\text{L}$  of Pico-Tag diluent (Waters, Milford, MA, USA) and injected. The column heater temperature was 46



°C, run time: 87 min, detector settings: 254 nm, 0.05 AUFS. The intra-assay coefficients of variation (CV) for leucine, isoleucine and valine was 0.42%, 0.79% and 1.19%, and the inter-assay CV was 2.04%, 3.53% and 2.27%, respectively. The method for plasma amino acids analysis performed in the present study was controlled by the European Research Network on Hereditary Metabolism (ERDNIM, MCA Lab, Netherlands).

### Data analysis

The plasma concentration of leucine ( $[Leu]_{pl}$ ), isoleucine ( $[Ile]_{pl}$ ), valine ( $[Val]_{pl}$ ) and the sum of those branched-chain amino acids ( $[\sum BCAA]_{pl}$ ) during incremental exercise test were presented as absolute values measured at rest (pre-exercise), at 120 W (i.e., power output corresponding to  $\sim 50\%$  of  $VO_{2max}$ ), 180 W (i.e., power output corresponding to  $\sim 70\%$  of  $VO_{2max}$ ) and at  $PO_{max}$  (at 100% of  $VO_{2max}$ ) both before and after the training. Moreover, the changes in  $[Leu]_{pl}$ ,  $[Ile]_{pl}$ ,  $[Val]_{pl}$  and  $[\sum BCAA]_{pl}$  during incremental exercise was presented in two exercise intensity domains: (a) when cycling in the moderate-intensity domain (below LT) and (b) when cycling in the heavy-intensity domain (above LT). The changes in BCAA concentration in the moderate-intensity domain was calculated as a difference ( $\Delta_{MI}$ ) between concentration measured at 120 W (i.e. at power output corresponding to  $\sim 50\%$  of  $VO_{2max}$ ) and concentration measured at rest (pre-exercise). The change in BCAA concentration in the heavy-intensity domain ( $\Delta_{HI}$ ) was calculated as a difference between concentration measured at  $PO_{max}$  ( $\sim 100\%$  of  $VO_{2max}$ ) and value measured at 180 W (i.e., at power output corresponding to  $\sim 70\%$   $VO_{2max}$ ). In addition exercise-induced changes in BCAA concentrations from rest to end of the incremental exercise was presented as a  $\Delta_{MAX}$  i.e., the difference between the concentration measured at  $PO_{max}$  minus concentration at rest. The changes ( $\Delta$ ) in plasma BCAA concentration were presented both during incremental exercise performed before and after the training.

In the present study lactate threshold was defined as the highest power output (PO) above which  $[La^-]_{pl}$  showed a sustained increase of lactate at least  $0.5 \text{ mmol L}^{-1}$  in response to increasing PO by 30 W of every 3 min of incremental cycling (Zoladz, Rademaker & Sargeant, 1995; Zoladz et al., 2014).

Exercise-induced plasma volume changes were calculated using formula developed by Van Beaumont (1972). Delta plasma volume ( $\Delta PV$ ) means difference between plasma volume before and after maximal incremental exercise. All values of plasma amino acids concentrations measured at intensity corresponding to  $PO_{max}$  were recalculated according to changes of plasma volume during incremental exercises using formula developed by Berthoin et al. (2002).

The homeostatic model assessment of insulin resistance (HOMA-IR) was computed based on the fasting concentration of glucose and insulin using the following formula:  $HOMA-IR = [INS (\mu U \text{ mL}^{-1}) \times GLU (\text{mmol L}^{-1})]/22.5$ , proposed by Matthews et al. (1985).

### Statistical analysis

The results are presented as means and standard errors. The critical level of significance was set at  $p < 0.05$ . Statistical significance of differences for paired samples was tested using

**Table 1** Body composition and exercise tolerance in the group of studied subjects before and after 5-weeks of the endurance training.

Variables	Before training	After training	<i>p</i> -value
BM, kg	79.9 ± 2.7	78.7 ± 2.8	<b>0.046</b>
BF, %	15.7 ± 1.1	15.3 ± 0.9	0.19
VO <sub>2max</sub> , mL min <sup>-1</sup>	3627 ± 106	3701 ± 110	0.19
PO <sub>max</sub> , W	264 ± 8	286 ± 6	<b>0.004</b>
PO at LT, W	132 ± 8	129 ± 9	1.00
Time to exhaustion, min	26.4 ± 0.8	28.6 ± 0.6	<b>0.004</b>
HR <sub>max</sub> , bt min <sup>-1</sup>	190 ± 3	194 ± 2	<b>0.02</b>

**Notes.**

BM, body mass; BF%, body fat percentage; VO<sub>2max</sub>, maximal oxygen uptake; PO<sub>max</sub>, power output reached at VO<sub>2max</sub>; PO at LT, power output reached at lactate threshold; HR<sub>max</sub>, maximum heart rate.

Data are shown as mean ± S.E.M. Two-sided, exact, non-asymptotic *p*-values are presented (Wilcoxon signed-rank test).

non-parametric Wilcoxon-signed-rank test and non-asymptotic, exact, two-sided *p*-values are presented.

In order to analyze the impact of exercise intensity (0, 120 W, 180 W, PO<sub>max</sub>) and training (before and after) on the [Leu]<sub>pl</sub>, [Ile]<sub>pl</sub>, [Val]<sub>pl</sub>, [∑BCAA]<sub>pl</sub> and [La]<sub>pl</sub> the data were analyzed using repeated measures 2-way ANOVA and planned comparisons were performed to identify significant differences between the groups. Moreover, repeated measures 2-way ANOVA was performed also to analyze the changes in [Leu]<sub>pl</sub>, [Ile]<sub>pl</sub>, [Val]<sub>pl</sub>, [∑BCAA]<sub>pl</sub> and [La]<sub>pl</sub> in the different intensity domains (Δ<sub>MI</sub>, Δ<sub>HI</sub>, Δ<sub>max</sub>). The obtained *p*-values were corrected using the Holm-Bonferroni method. In order to quantify the dependence of ([Leu]<sub>pl</sub>, [Ile]<sub>pl</sub>, [Val]<sub>pl</sub> and [∑BCAA]<sub>pl</sub>) on glucose homeostasis Spearman's rank correlation coefficient was used. Statistical analysis was performed using statistical packet STATISTICA 10.0 (Stat Soft, Tulsa, OK., USA) and StatXact 9.0 (Cytel Software Corporation, Cambridge, MA, USA).

## RESULTS

### Body composition and physical exercise capacity before and after the endurance training

A significant decrease in BM amounting to about 1.5%, was observed after endurance training (Table 1). No significant changes in absolute VO<sub>2max</sub> was found (*p* = 0.19), however there was a tendency to higher relative VO<sub>2max</sub> after the training program (45.6 ± 1.2 vs 47.3 ± 1.3 mL kg<sup>-1</sup> min<sup>-1</sup>, respectively before and after training, ~4% increase, *p* = 0.064).

The 5-week endurance training resulted in a significant increase (~8%) in power output reached at VO<sub>2max</sub>, which was accompanied by the significant increase in time to exhaustion (Table 1). No significant changes in power output reached at lactate threshold (PO at LT) was observed (Table 1).



**Table 2** Hematological and clinical chemistry parameters in the studied group of subjects before and after 5-weeks of endurance training.

Variable	Before training	After training	<i>p</i> -value
RBC, $\times 10^{12} \text{ L}^{-1}$	5.07 $\pm$ 0.06	4.97 $\pm$ 0.08	0.29
WBC, $\times 10^9 \text{ L}^{-1}$	5.14 $\pm$ 0.33	5.76 $\pm$ 0.38	0.13
MCV, fL	87.5 $\pm$ 1.1	87.2 $\pm$ 1.2	0.26
Ht, %	43.9 $\pm$ 0.8	42.6 $\pm$ 0.9	0.14
Hb, g dL <sup>-1</sup>	15.4 $\pm$ 0.3	15.7 $\pm$ 0.6	0.94
[Na <sup>+</sup> ] <sub>s</sub> , mmol L <sup>-1</sup>	141.2 $\pm$ 0.3	141.8 $\pm$ 0.5	0.23
[K <sup>+</sup> ] <sub>s</sub> , mmol L <sup>-1</sup>	4.17 $\pm$ 0.09	4.17 $\pm$ 0.11	0.95
[Creatinine] <sub>s</sub> , mol L <sup>-1</sup>	92.8 $\pm$ 3.0	90.9 $\pm$ 2.2	0.56
[Urea] <sub>s</sub> , mmol L <sup>-1</sup>	5.27 $\pm$ 0.31	5.01 $\pm$ 0.35	0.51
[Glucose] <sub>pl</sub> , mmol L <sup>-1</sup>	5.28 $\pm$ 0.09	5.17 $\pm$ 0.07	0.26
[Insulin] <sub>pl</sub> , mIU L <sup>-1</sup>	10.9 $\pm$ 1.2	9.59 $\pm$ 1.24	0.70
HOMA-IR	1.43 $\pm$ 0.16	1.25 $\pm$ 0.16	0.70
[ $\Sigma\alpha - AA$ ] <sub>pl</sub> , $\mu\text{mol L}^{-1}$	2973 $\pm$ 139	3,067 $\pm$ 150	0.77
[ $\Sigma\text{BCAA}$ ] <sub>pl</sub> , $\mu\text{mol L}^{-1}$	503 $\pm$ 24	561 $\pm$ 32	0.17

**Notes.**

RBC, red blood cells; WBC, white blood cells; MCV, mean corpuscular volume; Ht, hematocrit; Hb, hemoglobin; [Na<sup>+</sup>]<sub>s</sub>, serum sodium concentration; [K<sup>+</sup>]<sub>s</sub>, serum potassium concentration; [Creatinine]<sub>s</sub>, serum creatinine concentration; [Urea]<sub>s</sub>, serum urea concentration; [Glucose]<sub>pl</sub>, plasma glucose concentration; [Insulin]<sub>pl</sub>, plasma insulin concentration; HOMA-IR, homeostatic model assessment-insulin resistance; [ $\Sigma\alpha - AA$ ]<sub>pl</sub>, total plasma  $\alpha$ -amino acids concentration; [ $\Sigma\text{BCAA}$ ]<sub>pl</sub>, total plasma branched-chain amino acids (sum of leucine, isoleucine and valine concentration).

Data are shown as mean  $\pm$  S.E.M. Two-sided, exact, non- asymptotic *p*-values are presented (Wilcoxon signed-rank test).

### Hematological and clinical chemistry parameters in the studied group of subjects before and after the endurance training

Basic hematological and clinical chemistry parameters measured at rest in a fasted state as well as plasma amino acids concentration i.e., total  $\alpha$ -amino acids (including the sum of BCAA) and separately the sum of BCAA measured at rest in a fed state, before and after the training program are presented in Table 2. No significant difference ( $p > 0.05$ ) in hematological parameters, electrolytes, glucose concentration and HOMA-IR were noticed after the training in the studied group, when compared to the before training values. Moreover, no significant difference in the total plasma amino acids concentrations as well as the sum of BCAA was observed after the training when compared to the values obtained before training.

### Plasma volume change during single bout of exercise before and after the endurance training

The average exercise-induced decrease in plasma volume ( $\Delta\text{PV}$ ) during the maximal incremental exercise test before training amounted to about 13% and did not differ significantly ( $p = 0.43$ ) from its value during exercise performed after the training ( $\Delta\text{PV}$  about 15%).

## The changes of plasma BCAA and lactate concentration during incremental cycling exercise

The changes in plasma leucine ( $[\text{Leu}]_{\text{pl}}$ ), isoleucine ( $[\text{Ile}]_{\text{pl}}$ ) and valine ( $[\text{Val}]_{\text{pl}}$ ) during incremental exercise performed before and after 5 weeks of the endurance training are presented in Figs. 1A–1C.

During incremental exercise performed before the training plasma valine concentration at 120 W ( $\sim 50\%$  of  $\text{VO}_{2\text{max}}$ ) was not significantly different than at rest ( $p > 0.05$ , Fig. 1C). Plasma isoleucine concentration at 120 W was significantly lower than at rest ( $p < 0.01$ , Fig. 1B), whereas a tendency to lower  $[\text{Leu}]_{\text{pl}}$ , was present at 120 W, when compared to rest value ( $p = 0.07$ , Fig. 1A). There was no significant difference ( $p > 0.05$ ) in  $[\text{Leu}]_{\text{pl}}$ ,  $[\text{Ile}]_{\text{pl}}$  and  $[\text{Val}]_{\text{pl}}$  at intensity corresponding to 180 W ( $\sim 70\%$  of  $\text{VO}_{2\text{max}}$ ) when compared to 120 W ( $\sim 50\%$  of  $\text{VO}_{2\text{max}}$ ). However, at  $\text{PO}_{\text{max}}$  ( $100\% \text{VO}_{2\text{max}}$ ) plasma leucine, isoleucine and valine was significantly lower when compared to their values at 180 W ( $\sim 70\%$  of  $\text{VO}_{2\text{max}}$ ). Moreover, plasma leucine, isoleucine and valine at  $\text{PO}_{\text{max}}$  was significantly lower when compared with their value at rest ( $p < 0.01$ , Figs. 1A–1C).

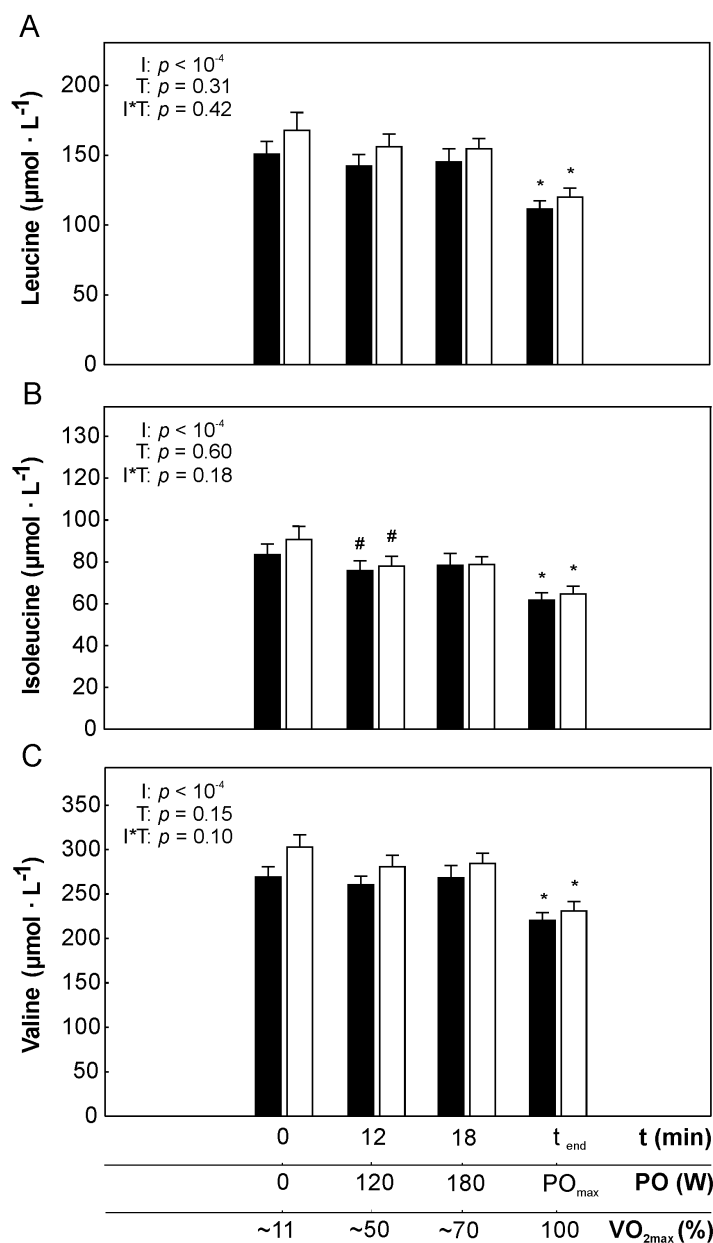
Since the changes of the  $[\text{Leu}]_{\text{pl}}$ ,  $[\text{Ile}]_{\text{pl}}$  and  $[\text{Val}]_{\text{pl}}$  during incremental exercise was similar for those three amino acids (Figs. 1A–1C), we have also analyzed the changes of the sum of BCAA ( $[\sum\text{BCAA}]_{\text{pl}}$ ) during incremental exercise (Fig. 2A). We have found that  $[\sum\text{BCAA}]_{\text{pl}}$  at 120 W was not significantly different than at rest, however a tendency to mild decrease when cycling in this intensity domain was observed ( $p = 0.08$ , Fig. 2A). No significant difference ( $p > 0.05$ ) in  $[\sum\text{BCAA}]_{\text{pl}}$  at intensity corresponding to 180 W ( $\sim 70\%$  of  $\text{VO}_{2\text{max}}$ ) when compared to 120 W ( $\sim 50\%$  of  $\text{VO}_{2\text{max}}$ ) was found, but at  $\text{PO}_{\text{max}}$   $[\sum\text{BCAA}]_{\text{pl}}$  was significantly lower than at 180 W ( $\sim 70\%$  of  $\text{VO}_{2\text{max}}$ ) ( $p < 0.01$ , Fig. 2A).

The changes in plasma lactate concentration ( $[\text{La}^-]_{\text{pl}}$ ) during incremental exercise is presented in Fig. 2B. An increase of power outputs from rest to 180 W was accompanied initially by a mild (up to 120 W) and further by a steeper (between 120 and 180 W) increase of plasma lactate concentration. However, exceeding 180 W ( $\sim 70\%$  of  $\text{VO}_{2\text{max}}$ ) was accompanied by very steep increase of  $[\text{La}^-]_{\text{pl}}$  which reached its maximum at  $\text{PO}_{\text{max}}$  (Fig. 2B).

The changes in  $[\text{Leu}]_{\text{pl}}$ ,  $[\text{Ile}]_{\text{pl}}$ ,  $[\text{Val}]_{\text{pl}}$  and  $[\sum\text{BCAA}]_{\text{pl}}$  during incremental exercise performed after the endurance training was similar to that reported before the training i.e., the effect of exercise intensity was always statistically significant (Figs. 1A–1C). In case of lactate however, endurance training modified its concentration during exercise i.e.,  $[\text{La}^-]_{\text{pl}}$  after the training was somewhat lower for intensities between 120 and 180 W, but visibly higher for  $\text{PO}_{\text{max}}$ , when compared to pre-training levels (significant interaction I\*T,  $p = 0.004$ , Fig. 2B).

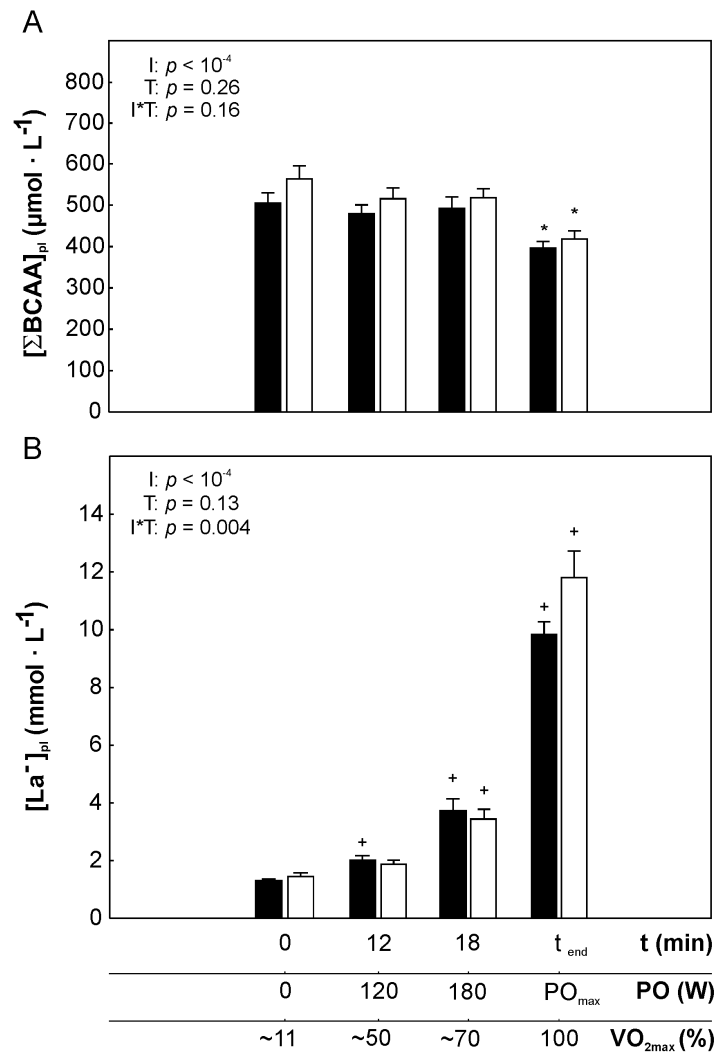
## The changes in plasma BCAA and lactate concentration during cycling performed in the moderate ( $\Delta_{\text{MI}}$ ) versus heavy intensity ( $\Delta_{\text{HI}}$ ) domain

When concerning the effect of exercise intensity on the BCAA changes during incremental exercise a greater decrease in  $[\text{Leu}]_{\text{pl}}$ ,  $[\text{Val}]_{\text{pl}}$ ,  $[\sum\text{BCAA}]_{\text{pl}}$  ( $p < 0.05$ ) and tendency to greater decrease in  $[\text{Ile}]_{\text{pl}}$  ( $p = 0.08$ ) have been observed during cycling in the heavy-intensity exercise domain i.e., above  $\sim 70\%$  of  $\text{VO}_{2\text{max}}$  up to  $100\% \text{VO}_{2\text{max}}$  ( $\Delta_{\text{HI}}$ ) when compared



**Figure 1** The changes in plasma branched-chain amino acids concentrations during incremental cycling exercise performed before and after the 5-weeks of the endurance training. The changes in plasma leucine (A), plasma isoleucine (B), plasma valine (C) during incremental exercise performed before (black bars) and after (white bars) the endurance training. The impact of factors: exercise intensity (I) and endurance training (T) on the analyzed variables is presented (repeated measures 2-way ANOVA, 2-sided  $p$ -value). Asterisk (\*) represents significantly lower concentrations from 180 W, 120 W and from rest ( $p < 0.01$ ) and hash (#) denotes significantly lower concentrations than at rest ( $p < 0.01$ ). Data are shown as mean  $\pm$  S.E.M. Abbreviation: VO<sub>2max</sub> – maximal oxygen uptake; PO<sub>max</sub> – power output reached at 100% of maximal oxygen uptake. The percentage of VO<sub>2max</sub> at the time zero represents the fraction of VO<sub>2max</sub> measured in sitting position before exercise.

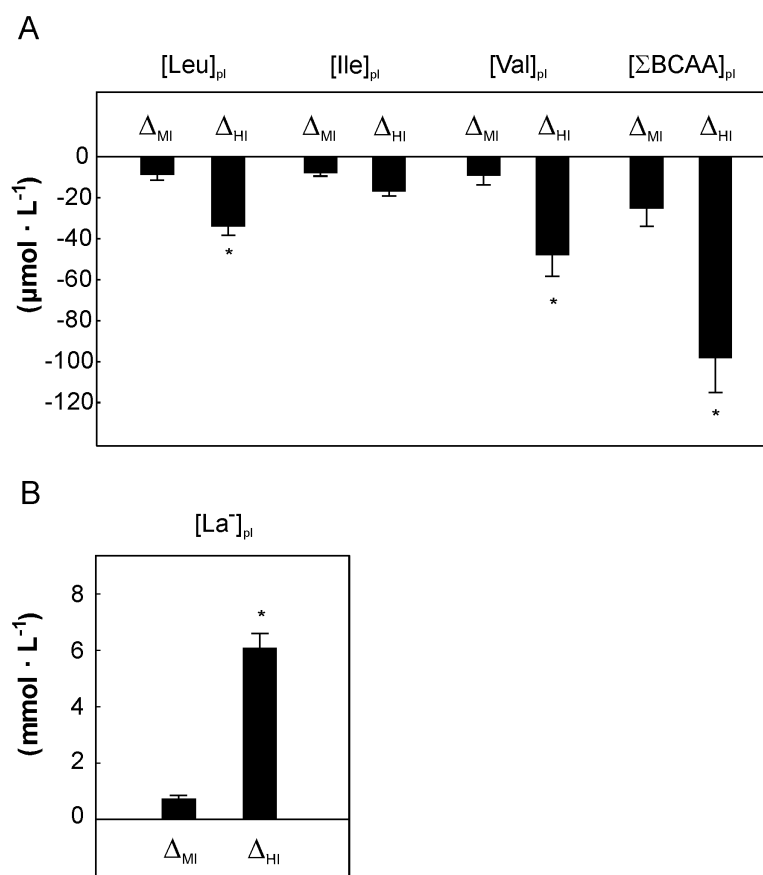
Full-size DOI: 10.7717/peerj.10491/fig-1



**Figure 2** The changes in the sum of plasma branched-chain amino acids concentrations and plasma lactate concentration during incremental cycling exercise performed before and after the 5-weeks of the endurance training. The changes in the sum of plasma BCAA concentration ( $[\Sigma\text{BCAA}]_{\text{pl}}$ , A) and plasma lactate concentration ( $[\text{La}^-]_{\text{pl}}$ , B) during incremental exercise performed before (black bars) and after (white bars) the endurance training. The impact of factors: exercise intensity (I) and endurance training (T) on the analyzed variables is presented (repeated measures 2-way ANOVA, 2-sided  $p$ -value). Asterisk (\*) represents significantly lower concentrations from 180 W, 120 W and from rest ( $p < 0.01$ ) and single cross (+) denotes significantly higher concentrations from the previous data point ( $p < 0.01$ ). In the case of ( $[\text{La}^-]_{\text{pl}}$ ) significant interaction between the two factors was observed (2-way ANOVA, I\*T). Data are shown as mean  $\pm$  S.E.M. Abbreviation: VO<sub>2max</sub> – maximal oxygen uptake; PO<sub>max</sub> – power output reached at 100% of maximal oxygen uptake. The percentage of VO<sub>2max</sub> at the time zero represents the fraction of VO<sub>2max</sub> measured in sitting position before exercise.

Full-size DOI: 10.7717/peerj.10491/fig-2

to cycling in the moderate-intensity exercise domain i.e., below  $\sim 50\%$  of VO<sub>2max</sub> ( $\Delta_{\text{MI}}$ ) (Fig. 3A).



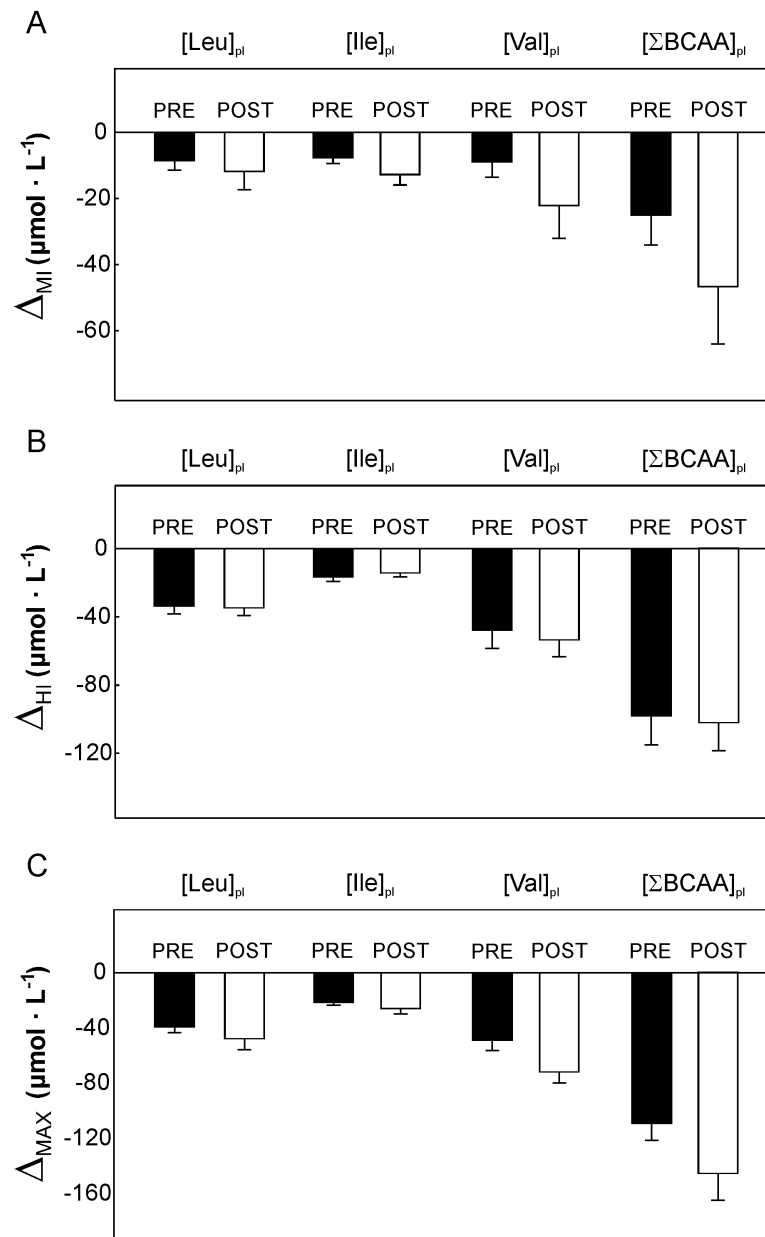
**Figure 3** The impact of cycling performed before endurance training in the moderate ( $\Delta_{MI}$ ) versus heavy ( $\Delta_{HI}$ ) intensity domain on the plasma branched-chain amino acids (A) and plasma lactate concentration (B). Asterisk (\*) represents significant difference from  $\Delta_{MI}$  ( $p < 0.05$ , repeated measures 2-way ANOVA). Data are shown as mean  $\pm$  S.E.M. Abbreviations: [Leu]<sub>pl</sub>, plasma leucine concentration; [Ile]<sub>pl</sub>, plasma isoleucine concentration; [Val]<sub>pl</sub>, plasma valine concentration; [ $\Sigma$ BCAA]<sub>pl</sub>, the sum of plasma BCAA concentration, [La<sup>-</sup>]<sub>pl</sub>, plasma lactate concentration;  $\Delta_{MI}$ , the difference between value measured at  $\sim 50\%$  of  $VO_{2max}$  and value measured at rest;  $\Delta_{HI}$ , the difference between value measured at  $100\%$  of  $VO_{2max}$  ( $PO_{max}$ ) and value measured at  $\sim 70\%$  of  $VO_{2max}$ .

Full-size [DOI: 10.7717/peerj.10491/fig-3](https://doi.org/10.7717/peerj.10491/fig-3)

When considering the changes in plasma lactate concentration significantly greater increase in [La<sup>-</sup>]<sub>pl</sub> was found during cycling in the heavy-intensity domain when compared to the moderate-intensity domain ( $p < 0.01$  Fig. 3B).

### The impact of 5-weeks of the endurance training on the plasma BCAA concentration during incremental cycling exercise

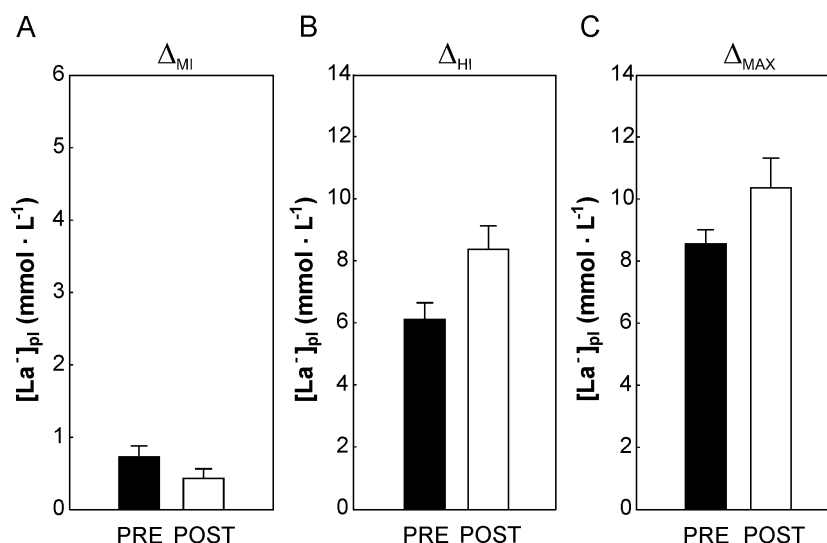
No effect of 5-weeks of the endurance training ( $p > 0.05$ ) on [Leu]<sub>pl</sub>, [Ile]<sub>pl</sub>, [Val]<sub>pl</sub> and  $\Sigma$ [BCAA]<sub>pl</sub> (Figs. 1A–1C and 2A) at rest and at appropriate exercise intensities ( $\sim 50\%$  of  $VO_{2max}$ ,  $\sim 70\%$  of  $VO_{2max}$ , and at intensity corresponding to  $100\%$   $VO_{2max}$ ) have been observed. Moreover, no impact of endurance training on the changes ( $p > 0.05$ ) in [Leu]<sub>pl</sub>, [Ile]<sub>pl</sub>, [Val]<sub>pl</sub> and  $\Sigma$ [BCAA]<sub>pl</sub> during cycling performed in moderate (Fig. 4A) as well as in heavy (Fig. 4B) intensity domain were reported. Furthermore, no effect of



**Figure 4** The impact of 5-weeks of the endurance training on the plasma branched-chain amino acids concentration during cycling in the varied intensity domains. The changes in plasma branched-chain amino acids concentration during cycling performed in the moderate-intensity domain (from rest up to 50% of  $VO_{2max}$   $\Delta_{MI}$ , A), heavy- intensity domain (above  $\sim 70\%$  of  $VO_{2max}$ ,  $\Delta_{HI}$ , B) and during maximal incremental cycling (from rest to 100% of  $VO_{2max}$  -  $\Delta_{max}$  C) before (Pre) and after (Post) the training. Data are shown as mean  $\pm$  S.E.M. Abbreviations: [Leu]<sub>pl</sub>, plasma leucine concentration; [Ile]<sub>pl</sub>, plasma isoleucine concentration; [Val]<sub>pl</sub>, plasma valine concentration; [ $\Sigma$ BCAA]<sub>pl</sub>, the sum of plasma BCAA concentration.

Full-size DOI: 10.7717/peerj.10491/fig-4





**Figure 5** The impact of 5-weeks of the endurance training on the plasma lactate concentration during cycling in the varied intensity domains. The changes in plasma lactate concentration during cycling performed in the moderate-intensity domain (up to  $\sim 50\%$  of  $VO_{2max}$  -  $\Delta_{MI}$ , A), heavy-intensity domain (above  $70\%$  of  $VO_{2max}$  -  $\Delta_{HI}$ , B) and during maximal incremental cycling (from rest to  $100\%$  of  $VO_{2max}$  -  $\Delta_{max}$ , C) before (Pre) and after (Post) the training. Data are shown as mean  $\pm$  S.E.M. Abbreviation:  $[La^-]_{pl}$ , plasma lactate concentration.

Full-size DOI: 10.7717/peerj.10491/fig-5

5 weeks of the endurance training ( $p > 0.05$ ) on the maximal exercise-induced changes ( $\Delta_{max}$ ) in  $[Leu]_{pl}$ ,  $[Ile]_{pl}$  and  $\sum [BCAA]_{pl}$ , was observed, except a clear tendency to a greater exercise-induced decrease in  $[Val]_{pl}$  during maximal incremental cycling performed after the training ( $p = 0.06$ , Fig. 4C).

### The impact of 5-weeks of the endurance training on the plasma lactate concentration during incremental cycling exercise

No effect of 5-weeks of endurance training ( $p > 0.05$ ) on plasma lactate concentration at rest and during exercise (i.e., at  $\sim 50\%$  of  $VO_{2max}$ ,  $\sim 70\%$  of  $VO_{2max}$  and at  $100\%$   $VO_{2max}$ ) have been observed (Fig. 2B). A tendency to lower increase in  $[La^-]_{pl}$ , when cycling in the moderate-intensity domain was found ( $p = 0.07$ , Fig. 5A) after 5 weeks of the endurance training. On the other hand, a tendency to greater increase in  $[La^-]_{pl}$ , when cycling in the heavy-intensity domain ( $p = 0.08$ , Fig. 5B) as well as during maximal incremental cycling ( $p = 0.07$ , Fig. 5C) was reported after the training.

### Correlation analysis

No significant correlation ( $p > 0.05$ ) between resting leucine, isoleucine, valine concentration and HOMA-IR both before and after the training was observed. A clear tendency to positive correlation between training-induced changes in the sum of BCAA  $[\sum BCAA]_{pl}$  at rest and training-induced change in basal glucose concentration was found ( $r = 0.61$ ,  $p = 0.06$ ).

## DISCUSSION

The main finding of this study is that low-to-moderate intensity exercise (up to about 50% of  $VO_{2max}$ ) performed in young healthy men had essentially no significant impact on the plasma branched-chain amino acids concentration in relation to their levels at rest, however when cycling in heavy-intensity domain (i.e., above intensity corresponding to 70% of  $VO_{2max}$ ) a significant decrease in plasma BCAA concentration have been found. Interestingly, as presented in Fig. 2 the observed deeper decrease in plasma BCAA concentration (above  $\sim 70\%$  of  $VO_{2max}$ ) was accompanied by the onset of a faster increase in plasma lactate concentration. This suggests that the significant exercise-induced decrease in BCAA is linked to the acceleration of muscle glycogenolysis during exercise. We have also found that endurance training of moderate-intensity lasting 5 weeks resulting in significant enhancement of exercise tolerance had no significant impact on the exercise-induced changes in plasma BCAA concentrations.

### The changes in BCAA concentration during single bout of incremental exercise

In the present study we have analyzed the changes in plasma BCAA concentration during incremental exercise until exhaustion lasting about 30 min, which is a typical exercise test performed for the assessment of exercise tolerance (Majerczak *et al.*, 2014; Zoladz, Rademaker & Sargeant, 1995). We have found that a single bout of maximal incremental exercise performed in young, untrained, but physically active men was accompanied by a significant decrease (rest value versus intensity corresponding to  $VO_{2max}$ ) in leucine, isoleucine, valine (Figs. 1A–1C) and in the sum of BCAA (Fig. 2A). The results of the present study show that changes in BCAA concentration occur not only after prolonged, sustained exercise, as demonstrated earlier (Blomstrand, Celsing & Newsholme, 1988; Wagenmakers *et al.*, 1989) but also are present after exercise of shorter duration ( $\sim 30$  min). This might be a consequence of a significant increase in BCKDH activity in skeletal muscle during incremental exercise test as demonstrated by Howarth *et al.* (2007).

Similar effect i.e., a significant decrease in BCAA concentration (rest versus intensity corresponding to  $VO_{2max}$ ) after single bout of whole body maximal graded exercise (an increase in power output 50 W every 3 min) in the group of young, healthy subjects has been observed in the study by Makhro *et al.* (2016). However, in the present study we have additionally analyzed the changes in BCAA concentration in varied exercise intensity domains during incremental exercise. We have found that short duration, low-to-moderate intensity exercise (i.e., up to  $\sim 50\%$  of  $VO_{2max}$ ) seems to have no significant impact on BCAA concentration (only a tendency to a mild decrease was observed below 50% of  $VO_{2max}$  and was followed by a plateau in BCAA in the range 50 and  $\sim 70\%$  of  $VO_{2max}$ ) whereas even short duration but heavy-intensity exercise ( $>70\%$  of  $VO_{2max}$ ) decreases significantly circulating BCAA in young healthy men. Hence as consequence, we have observed significantly greater decrease in plasma BCAA during heavy-intensity cycling in comparison to cycling performed in the moderate-intensity domain (Fig. 3A). It should be mentioned that the changes in plasma leucine, isoleucine and valine concentration during single bout of incremental exercise found in the present study was similar for all

three BCAA and also it was similar during exercise performed before and after the training (Figs. 1A–1C).

The exercise-induced significant decrease in plasma BCAA concentration, when exceeding intensity corresponding to  $\sim 70\%$  of  $VO_{2max}$  might be a consequence of a greater rate of BCAA uptake by working skeletal muscles than splanchnic release when cycling in the heavy-intensity domain. Some authors postulated that higher exercise-induced amino acid delivery to muscles, including BCAA, results from blood flow redistribution during exercise with an involvement of epinephrine (Zoladz *et al.*, 2015; Zouhal *et al.*, 2008). During heavy-intensity exercise skeletal muscles blood flow increases 100-fold when compared to resting conditions (Zoladz *et al.*, 2015) and at the same time blood flow to liver is diminished by  $\sim 50\%$  when compared to its resting value (Bergeron *et al.*, 2001). The blood flow redistribution might indeed explain an increase in BCAA uptake by skeletal muscles and a decrease in BCAA release from splanchnic bed (Brosnan, 2003; Zoladz *et al.*, 2015) leading to a decrease of BCAA in the bloodstream.

Another factor, which might contribute to a significant decrease in BCAA during heavy-intensity exercise suggesting greater rate of their uptake by skeletal muscles could be related to the effect of hormones – insulin and epinephrine. BCAA appear to be the most sensitive amino acids to the insulin action, however based on the previous studies during incremental exercise of similar pattern no changes in insulin concentration or even an attenuation of plasma concentration of this hormone is observed (Galbo, 1983; Zoladz *et al.*, 2002). With regards to epinephrine, it has been demonstrated that epinephrine infusion exerts hypoaminoacidemic effect i.e., decreases all amino acids concentrations including BCAA and gluconeogenic amino acids in the bloodstream except alanine (Del Prato *et al.*, 1990). During incremental exercise plasma epinephrine concentration increases significantly when exceeding the intensity corresponding to about 50% of  $VO_{2max}$  (Galbo, 1983). Hence, an increase in epinephrine during graded exercise from intensity corresponding to 50% of  $VO_{2max}$  (Galbo, 1983) might explain the significant decrease in BCAA concentration observed in our study from intensity corresponding to  $\sim 70\%$  of  $VO_{2max}$  (Figs. 1A–1C and Fig. 2A). Moreover, it is well known that an increase in epinephrine concentration during incremental exercise (from  $\sim 50\%$  of  $VO_{2max}$ ) precedes the acceleration of glycogen utilization during exercise (Brooks & Mercier, 1994). It has been demonstrated that after crossing the so called ‘crossover point’ (carbohydrates/fatty acids utilization point), which in untrained subjects is localized at intensity corresponding to about  $\sim 50\%$  of  $VO_{2max}$ , glycogen utilization increases disproportionately faster, leading to its depletion (Brooks & Mercier, 1994). As a consequence of an intensification of glycogenolysis in skeletal muscles an increase in muscle and blood lactate accumulation occurs (Shulman, 2005). Van Hall *et al.* (1996) found that the rate of BCAA utilization (as reflected by an increase in percentage of active BCKDH complex) is higher (9-fold increase during exercise) in glycogen-depleted leg when compared to the leg with normal glycogen level (4-fold). This is consistent with the fact that BCAA can be used as an alternative source of energy for glycogen depleted muscles. In the present study, we observed the significant decrease in circulating BCAA concentration started at the exercise intensity corresponding to  $\sim 70\%$  of  $VO_{2max}$  (Fig. 2A), which was preceded by an intensification of plasma lactate accumulation

(Fig. 2B). This coincidence clearly suggests that in untrained subjects an increased glycogen utilization in muscles during incremental exercise reflected by plasma lactate accumulation (Fig. 2B) precedes greater BCAA usage (Fig. 2A) as energy substrate during cycling in the heavy-intensity domain when compared to moderate exercise intensities.

Taking into account the role of systemic BCAA in the cardiometabolic risk, exercise at higher intensity ( $>70\%$  of  $VO_{2max}$ ) in healthy, young individuals seems to be more effective in lowering of blood BCAA concentrations and in decreasing the cardiometabolic risk.

### **The effect of 5-weeks of moderate-intensity endurance training on the physical capacity and plasma BCAA concentration**

The endurance training applied in the present study was composed mainly of moderate-intensity exercise bouts ( $\sim 85\%$  of training workloads was performed at intensity below lactate threshold). Such training intensities i.e., low to moderate are often prescribed as a part of therapy in cardiometabolic diseases which is a main cause of death in modern societies (Holloszy, 2005; Nystoriak & Bhatnagar, 2018). Training program performed by our subjects, amounting to a total of 20 exercise bouts, resulted in a significant increase in physical capacity as reflected by an increase in power output reached at  $VO_{2max}$  (by about 8%,  $p = 0.004$ ) and by an increase in time to exhaustion ( $p = 0.004$ ) after the training program (Table 1). An enhancement of physical capacity as judged by an increase in exercise duration and in enhancement of power generating capabilities after the applied training program (Table 1) was not accompanied by a significant changes in BCAA during exercise (Fig. 2A), except a clear tendency to greater decrease in plasma valine concentration during maximal incremental cycling performed after the training ( $p = 0.06$ , Fig. 4C). Moreover, we have observed no impact of endurance training on the circulating BCAA at rest and at appropriate power outputs (Figs. 1A–1C, 2A and 4A–4C).

The applied training program of moderate intensity lasting 5 weeks in the studied group of young healthy subjects did not change the insulin sensitivity as reflected by no changes in HOMA-IR ( $p > 0.05$ , Table 2). However, we have observed a clear tendency to positive correlation ( $p = 0.06$ ) between training-induced change in the sum of BCAA at rest and training-induced changes in glucose concentration. This results support the suggested relation between higher plasma BCAA concentration with a decreased insulin sensitivity (Lotta et al., 2016; Wang et al., 2011). On the other hand, no significant correlation between training-induced changes in BCAA concentration at rest and changes in insulin resistance reflected by HOMA-IR has been found.

**Study limitations:** It should be underlined that the present study involved male subjects only in order to avoid a potential impact of sex differences. Therefore, the obtained results can be considered as representative for young healthy male only and the conclusion of the present study cannot be simply extrapolated to the females. Moreover, the number of subjects participating in this study was relatively small (10 individuals), nevertheless, this group was very homogeneous as described in the Method section. Furthermore, in the present study we have shown the changes of BCAA concentration at rest and at three exercise intensities—referring to moderate, heavy and severe intensity domain. It would

be interesting to determine in the future the BCAA levels at all exercise stages during the maximal incremental exercise test. Another limitation of this study is lack of a control group. Taking into account the effect of circulating BCAA on insulin sensitivity and cardiometabolic health one should also consider to determine the impact of exercise in varied intensity domains on the BCAA concentrations in the group of participants at a more advanced age (e.g., over 50 years old) and patients including patients with cardiovascular disease and type 2 diabetes.

## CONCLUSIONS

We have concluded, that an incremental exercise performed in young healthy men has an impact on the plasma BCAA concentration in humans and in view of our results this effect depends on the exercise intensity domain. Namely, a short duration bouts of exercise (lasting about 12 min) of moderate intensity (up to about 50% of  $VO_{2max}$ ), as applied in e.g., cardiac rehabilitation or in recreational activities, has essentially no significant effect on the plasma BCAA concentrations in young healthy men. However, the exercise of high-intensity—above 70% of  $VO_{2max}$  (lasting only about 10 min)—leads to a pronounced decrease in plasma BCAA. This indicates that even short bouts of relatively high intensity exercise can decrease plasma BCAA in young healthy people, which implies that regular physical activity with implementation of heavy-intensity exercise bouts might be indeed more effective when consider an improvement of insulin sensitivity and prevention of type 2 diabetes. Concomitantly, endurance training of moderate-intensity lasting 5 weeks, resulting in significant increase in exercise tolerance had no effect on the exercise-induced changes in plasma BCAA concentrations. Taking into account the role of the BCAA in cardiometabolic diseases the effect of physical activities on the plasma BCAA requires further studies, especially in the group of patients with cardiometabolic risk.

## ADDITIONAL INFORMATION AND DECLARATIONS

### Funding

This work was supported by the Ministry of Science and Higher Education, Poland under Grant no. NN 404196637. The funders had no role in study design, data collection and analysis, decision to publish, or preparation of the manuscript.

### Grant Disclosures

The following grant information was disclosed by the authors:  
Ministry of Science and Higher Education, Poland: NN 404196637.

### Competing Interests

The authors declare there are no competing interests.

### Author Contributions

- Anna Gawedzka analyzed the data, prepared figures and/or tables, authored or reviewed drafts of the paper, and approved the final draft.

- Marcin Grandys and Krzysztof Duda performed the experiments, analyzed the data, authored or reviewed drafts of the paper, and approved the final draft.
- Justyna Zapart-Bukowska performed the experiments, prepared figures and/or tables, authored or reviewed drafts of the paper, and approved the final draft.
- Jerzy A. Zoladz and Joanna Majerczak conceived and designed the experiments, performed the experiments, analyzed the data, authored or reviewed drafts of the paper, and approved the final draft.

### Human Ethics

The following information was supplied relating to ethical approvals (i.e., approving body and any reference numbers):

The study was approved by the Local Ethical Committee in Krakow (Ethical Application Ref: 9 KBL/OIL/2009) and performed according to guidelines of the Declaration of Helsinki.

### Data Availability

The following information was supplied regarding data availability:

Data are available at Jagiellonian University Repository: Gawędzka, A., Grandys, M., Duda, K., Zapart-Bukowska, J., Zoladz, J. A., & Majerczak, J. (2020). Data to figures and tables. Repozytorium Uniwersytetu Jagiellońskiego. <https://ruj.uj.edu.pl/xmlui/handle/item/244739>.

## REFERENCES

- Batch BC, Shah SH, Newgard CB, Turer CB, Haynes C, Bain JB, Muehlbauer M, Patel MJ, Stevens RD, Appel LJ, Newby LK, Svetkey LP. 2013.** Branched chain amino acids are novel biomarkers for discrimination of metabolic wellness. *Metabolism: Clinical and Experimental* **62**:961–969 DOI [10.1016/j.metabol.2013.01.007](https://doi.org/10.1016/j.metabol.2013.01.007).
- Bergeron R, Kjaer M, Simonsen L, Bülow J, Skovgaard D, Howlett K, Galbo H. 2001.** Splanchnic blood flow and hepatic glucose production in exercising humans: role of renin-angiotensin system. *American Journal of Physiology-Regulatory, Integrative and Comparative Physiology* **281**:R1854–R1861 DOI [10.1152/ajpregu.2001.281.6.R1854](https://doi.org/10.1152/ajpregu.2001.281.6.R1854).
- Bergström J, Fürst P, Hultman E. 1985.** Free amino acids in muscle tissue and plasma during exercise in man. *Clinical Physiology* **5**:155–160 DOI [10.1111/j.1475-097X.1985.tb00591.x](https://doi.org/10.1111/j.1475-097X.1985.tb00591.x).
- Berthoin S, Pelayo P, Baquet G, Marais G, Allender H, Robin H. 2002.** Plasma lactate recovery from maximal exercise with correction for variations in plasma volume. *The Journal of Sports Medicine and Physical Fitness* **42**:26–30.
- Blomstrand E, Celsing F, Newsholme EA. 1988.** Changes in plasma concentrations of aromatic and branched chain amino acids during sustained exercise in man and their possible role in fatigue. *Acta Physiologica Scandinavica* **133**:115–121 DOI [10.1111/j.1748-1716.1988.tb08388.x](https://doi.org/10.1111/j.1748-1716.1988.tb08388.x).
- Brooks GA, Mercier J. 1994.** Balance of carbohydrate and lipid utilization during exercise: the crossover concept. *Journal of Applied Physiology* **76**:2253–2261 DOI [10.1152/jappl.1994.76.6.2253](https://doi.org/10.1152/jappl.1994.76.6.2253).



- Brosnan JT. 2003.** Interorgan amino acid transport and its regulation. *Journal of Nutrition* 133:2068S–2072S DOI [10.1093/jn/133.6.2068S](https://doi.org/10.1093/jn/133.6.2068S).
- Del Prato S, DeFronzo RA, Castellino P, Wahren J, Alvestrand A. 1990.** Regulation of amino acid metabolism by epinephrine. *American Journal of Physiology* 258:E878–E887.
- Eriksson LS, Broberg S, Björkman O, Wahren J. 1985.** Ammonia metabolism during exercise in man. *Clinical Physiology* 5:325–336 DOI [10.1111/j.1475-097X.1985.tb00753.x](https://doi.org/10.1111/j.1475-097X.1985.tb00753.x).
- Felig P, Wahren J. 1971.** Amino acid metabolism in exercising man. *The Journal of Clinical Investigation* 50:2703–2714 DOI [10.1172/JCI106771](https://doi.org/10.1172/JCI106771).
- Galbo H. 1983.** *Hormonal and Metabolic Adaptation to Exercise*. New York: Thieme-Stratton Inc.
- Gibala MJ. 2007.** Protein metabolism and endurance exercise. *Sports Medicine* 37:337–340 DOI [10.2165/00007256-200737040-00016](https://doi.org/10.2165/00007256-200737040-00016).
- Grandys M, Majerczak J, Duda K, Zapart-Bukowska J, Kulpa J, Zoladz JA. 2009.** Endurance training of moderate intensity increases testosterone concentration in young, healthy men. *International Journal of Sports Medicine* 30:489–495 DOI [10.1055/s-0029-1202340](https://doi.org/10.1055/s-0029-1202340).
- Hassager C, Gotfredsen A, Jensen J, Christiansen C. 1986.** Prediction of body composition by age, height, weight, and skinfold thickness in normal adults. *Metabolism: Clinical and Experimental* 35:1081–1084 DOI [10.1016/0026-0495\(86\)90018-1](https://doi.org/10.1016/0026-0495(86)90018-1).
- Holloszy O. 2005.** Exercise-induced increase in muscle insulin sensitivity. *Journal of Applied Physiology* 99:338–343 DOI [10.1152/jappphysiol.00123.2005](https://doi.org/10.1152/jappphysiol.00123.2005).
- Howarth KR, Burgomaster KA, Phillips SM, Gibala MJ. 2007.** Exercise training increases branched-chain oxoacid dehydrogenase kinase content in human skeletal muscle. *American Journal of Physiology-Regulatory, Integrative and Comparative Physiology* 293:R1335–R1341 DOI [10.1152/ajpregu.00115.2007](https://doi.org/10.1152/ajpregu.00115.2007).
- Lamont LS, McCullough AJ, Kalhan SC. 1999.** Comparison of leucine kinetics in endurance-trained and sedentary humans. *Journal of Applied Physiology* 86:320–325 DOI [10.1152/jappphysiol.1999.86.1.320](https://doi.org/10.1152/jappphysiol.1999.86.1.320).
- Lotta LA, Scott RA, Sharp SJ, Burgess S, Luan J, Tillin T, Schmidt AF, Imamura F, Stewart ID, Perry JRB, Marney L, Koulman A, Karoly ED, Forouhi NG, Sjögren RJO, Näslund E, Zierath JR, Krook A, Savage DB, Griffin JL, Chaturvedi N, Hingorani AD, Khaw K-T, Barroso I, McCarthy MI, O’Rahilly S, Wareham NJ, Langenberg C. 2016.** Genetic predisposition to an impaired metabolism of the branched-chain amino acids and risk of type 2 diabetes: a mendelian randomisation analysis. *PLOS Medicine* 13:e1002179 DOI [10.1371/journal.pmed.1002179](https://doi.org/10.1371/journal.pmed.1002179).
- Majerczak J, Nieckarz Z, Karasinski J, Zoladz JA. 2014.** Myosin heavy chain composition in the vastus lateralis muscle in relation to oxygen uptake and heart rate during cycling in humans. *Journal of Physiology and Pharmacology* 65:217–227.
- Majerczak J, Rychlik B, Grzelak A, Grzmil P, Karasinski J, Pierzchalski P, Pulaski L, Bartosz G, Zoladz JA. 2010.** Effect of 5-week moderate intensity endurance training on the oxidative stress, muscle specific uncoupling protein (UCP3) and superoxide

- dismutase (SOD2) contents in vastus lateralis of young, healthy men. *Journal of Physiology and Pharmacology* **61**:743–751.
- Makhro A, Haider T, Wang J, Bogdanov N, Steffen P, Wagner C, Meyer T, Gassmann M, Hecksteden A, Kaestner L, Bogdanova A. 2016.** Comparing the impact of an acute exercise bout on plasma amino acid composition, intraerythrocytic  $\text{Ca}^{2+}$  handling, and red cell function in athletes and untrained subjects. *Cell Calcium* **60**:235–244 DOI [10.1016/j.ceca.2016.05.005](https://doi.org/10.1016/j.ceca.2016.05.005).
- Matthews DR, Hosker JP, Rudenski AS, Naylor BA, Treacher DF, Turner RC. 1985.** Homeostasis model assessment: insulin resistance and beta-cell function from fasting plasma glucose and insulin concentrations in man. *Diabetologia* **28**:412–419 DOI [10.1007/BF00280883](https://doi.org/10.1007/BF00280883).
- McGarrah RW, Zhang GF, Christopher BA, Deleye Y, Walejko JM, Page S, Ilkayeva O, White PJ, Newgard CB. 2020.** Dietary branched-chain amino acid restriction alters fuel selection and reduces triglyceride stores in hearts of Zucker fatty rats. *American Journal of Physiology-Endocrinology and Metabolism* **318**:E216–E223 DOI [10.1152/ajpendo.00334.2019](https://doi.org/10.1152/ajpendo.00334.2019).
- McKenzie S, Phillips SM, Carter SL, Lowther S, Gibala MJ, Tarnopolsky MA. 2000.** Endurance exercise training attenuates leucine oxidation and BCOAD activation during exercise in humans. *American Journal of Physiology-Endocrinology and Metabolism* **278**:E580–E587 DOI [10.1152/ajpendo.2000.278.4.E580](https://doi.org/10.1152/ajpendo.2000.278.4.E580).
- Meyer C, Dostou JM, Welle SL, Gerich JE. 2002.** Role of human liver, kidney, and skeletal muscle in postprandial glucose homeostasis. *American Journal of Physiology-Endocrinology and Metabolism* **282**:E419–E427 DOI [10.1152/ajpendo.00032.2001](https://doi.org/10.1152/ajpendo.00032.2001).
- Nilsen MS, Jersin RÅ, Ulvik A, Madsen A, McCann A, Svensson PA, Svensson MK, Nedrebø BG, Gudbrandsen OA, Tell GS, Kahn CR, Ueland PM, Mellgren G, Dankel SN. 2020.** 3-Hydroxyisobutyrate, a strong marker of insulin resistance in type 2 diabetes and obesity that modulates white and brown adipocyte metabolism. *Diabetes* **69**:1903–1916 DOI [10.2337/db19-1174](https://doi.org/10.2337/db19-1174).
- Nystoriak MA, Bhatnagar A. 2018.** Cardiovascular effects and benefits of exercise. *Frontiers in Cardiovascular Medicine* **5**:1–11.
- Shulman RG. 2005.** Glycogen turnover forms lactate during exercise. *Exercise and Sport Sciences Reviews* **33**:157–162 DOI [10.1097/00003677-200510000-00002](https://doi.org/10.1097/00003677-200510000-00002).
- Soulage CO, SardónPuig L, Soulière L, Zarrouki B, Guichardant M, Lagarde M, Pillon NJ. 2018.** Skeletal muscle insulin resistance is induced by 4-hydroxy-2-hexenal, a by-product of n-3 fatty acid peroxidation. *Diabetologia* **61**:688–699 DOI [10.1007/s00125-017-4528-4](https://doi.org/10.1007/s00125-017-4528-4).
- Van Beaumont W. 1972.** Evaluation of hemoconcentration from hematocrit measurements. *Journal of Applied Physiology* **32**:712–713 DOI [10.1152/jappl.1972.32.5.712](https://doi.org/10.1152/jappl.1972.32.5.712).
- Van Hall G, MacLean DA, Saltin B, Wagenmakers AJ. 1996.** Mechanisms of activation of muscle branched-chain alpha-keto acid dehydrogenase during exercise in man. *Journal of Physiology* **494**:899–905 DOI [10.1113/jphysiol.1996.sp021542](https://doi.org/10.1113/jphysiol.1996.sp021542).

- Wagenmakers AJ, Brookes JH, Coakley JH, Reilly T, Edwards RH. 1989.** Exercise-induced activation of the branched-chain 2-oxo acid dehydrogenase in human muscle. *European Journal of Applied Physiology and Occupational Physiology* **59**:159–167 DOI [10.1007/BF02386181](https://doi.org/10.1007/BF02386181).
- Wang TJ, Larson MG, Vasan RS, Cheng S, Rhee EP, McCabe E, Lewis GD, Fox CS, Jacques PF, Fernandez C, O'Donnell CJ, Carr SA, Mootha VK, Florez JC, Souza A, Melander O, Clish CB, Gerszten RE. 2011.** Metabolite profiles and the risk of developing diabetes. *Nature Medicine* **17**:448–453 DOI [10.1038/nm.2307](https://doi.org/10.1038/nm.2307).
- Whipp BJ. 1996.** Domains of aerobic function and their limiting parameters. In: Steinacker JM, Ward SA, eds. *The physiology and pathophysiology of exercise tolerance*. New York: Plenum Press, 83–89.
- White PJ, Lapworth AL, An J, Wang L, McGarrah RW, Stevens RD, Ilkayeva O, George T, Muehlbauer MJ, Bain JR, Trimmer JK, Brosnan MJ, Rolph TP, Newgard CB. 2016.** Branched-chain amino acid restriction in Zucker-fatty rats improves muscle insulin sensitivity by enhancing efficiency of fatty acid oxidation and acyl-glycine export. *Molecular Metabolism* **5**:538–551 DOI [10.1016/j.molmet.2016.04.006](https://doi.org/10.1016/j.molmet.2016.04.006).
- White PJ, Newgard CB. 2019.** Branched-chain amino acids in disease. *Science* **363**:582–583 DOI [10.1126/science.aav0558](https://doi.org/10.1126/science.aav0558).
- Zoladz JA, Duda K, Konturek SJ, Sliwowski Z, Pawlik T, Majerczak J. 2002.** Effect of different muscle shortening velocities during prolonged incremental cycling exercise on the plasma growth hormone, insulin, glucose, glucagon, cortisol, leptin and lactate concentrations. *Journal of Physiology and Pharmacology* **53**:409–422.
- Zoladz JA, Grassi B, Majerczak J, Szkutnik Z, Korostynski M, Grandys M, Jarmuszkiewicz W, Korzeniewski B. 2014.** Mechanisms responsible for the acceleration of pulmonary  $V_{O_2}$  on-kinetics in humans after prolonged endurance training. *American Journal of Physiology-Regulatory, Integrative and Comparative Physiology* **307**:R1101–R1114 DOI [10.1152/ajpregu.00046.2014](https://doi.org/10.1152/ajpregu.00046.2014).
- Zoladz JA, Majerczak J, Duda K, Chlopicki S. 2015.** Coronary and muscle blood flow during physical exercise in humans; heterogenic alliance. *Pharmacological Reports* **67**:719–727 DOI [10.1016/j.pharep.2015.06.002](https://doi.org/10.1016/j.pharep.2015.06.002).
- Zoladz JA, Rademaker AC, Sargeant AJ. 1995.** Non-linear relationship between  $O_2$  uptake and power output at high intensities of exercise in humans. *Journal of Physiology* **488**:211–217 DOI [10.1113/jphysiol.1995.sp020959](https://doi.org/10.1113/jphysiol.1995.sp020959).
- Zoladz JA, Szkutnik Z, Majerczak J, Duda K. 1998.** Detection of the change point in oxygen uptake during an incremental exercise test using recursive residuals: relationship to the plasma lactate accumulation and blood acid base balance. *European Journal of Applied Physiology and Occupational Physiology* **78**:369–377 DOI [10.1007/s004210050433](https://doi.org/10.1007/s004210050433).
- Zouhal H, Jacob C, Delamarche P, Gratas-Delamarche A. 2008.** Catecholamines and the effects of exercise, training and gender. *Sports Medicine* **38**:401–423 DOI [10.2165/00007256-200838050-00004](https://doi.org/10.2165/00007256-200838050-00004).