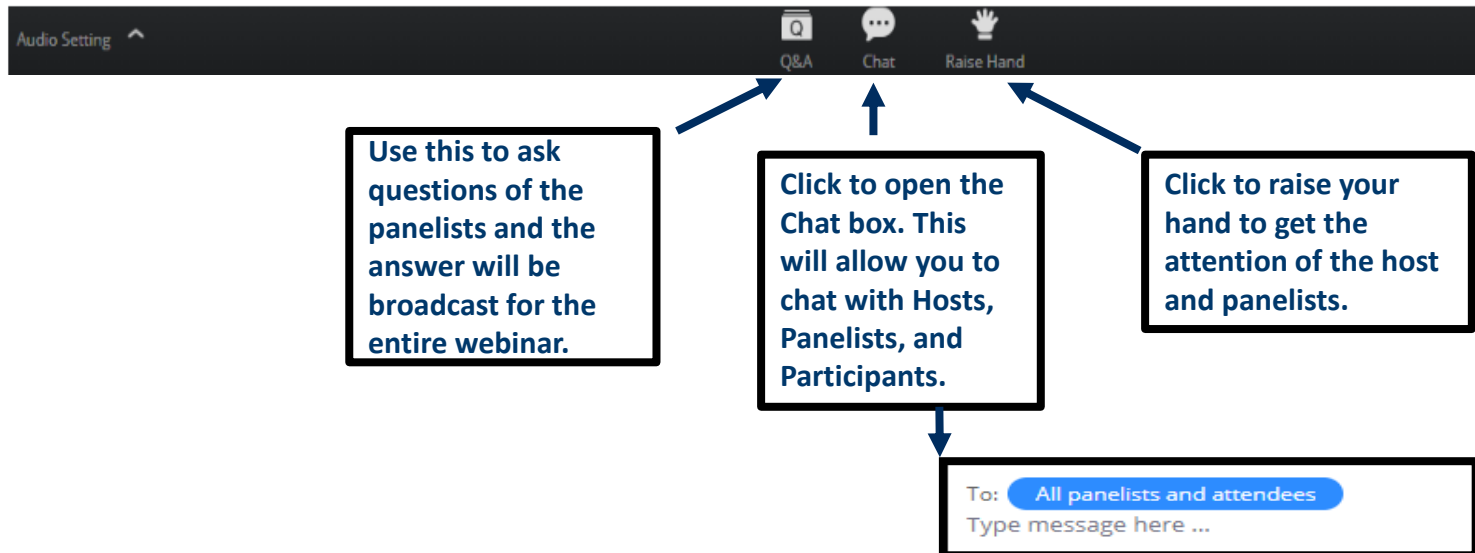




How to FSSE: Everything you need to know

Webinar will begin at 2 pm Eastern Time

Before we begin, please review the Zoom controls below. Leave your audio and video off, unless prompted by a host. You can post any questions in the chat box.



- Visit <https://kb.iu.edu/d/aods#hear-talk> for a comprehensive set of tests and troubleshooting solutions if you have issues with the Zoom software
- To check your audio connection, click the arrow next to the microphone on the left side of the in-meeting toolbar.
- Click “Test Computer Audio” and audio preferences will open.
- You can test the volume and output of your speaker device by selecting “Test Speaker.” If you cannot hear, change the output source by selecting a different speaker device.

The Chat window allows participants to interact with presenters and each other – make comments about your NSSE practice, ask questions of presenters and of other **users!**



How to FSSE: Everything you need to know

Allison BrckaLorenz, PhD, Indiana University Bloomington

Kyle T. Fassett, Indiana University Bloomington



Webinar presented live on March 23rd, 2021



Outline of Session

- Getting started
 - Why FSSE? What does one get out of a FSSE administration?
- Registration
 - How do I sign up?!
- Customizing your administration
 - Modules, schedules, messages, oh my!
- Survey launch
 - Last minute preparations, then sit back and relax (kind of)
- FAQs and Q&A
- An exciting new adventure

Getting Started: Faculty Survey of Student Engagement

- Assesses perceptions and use of teaching practices that promote student engagement at four-year colleges and universities
- Designed to complement the National Survey of Student Engagement (NSSE)
- Although most participating institutions use FSSE and NSSE concurrently, FSSE can be administered on its own.
- More than 304,000 faculty surveyed in over 870 colleges and universities since 2003
http://fsse.indiana.edu/html/survey_instruments.cfm



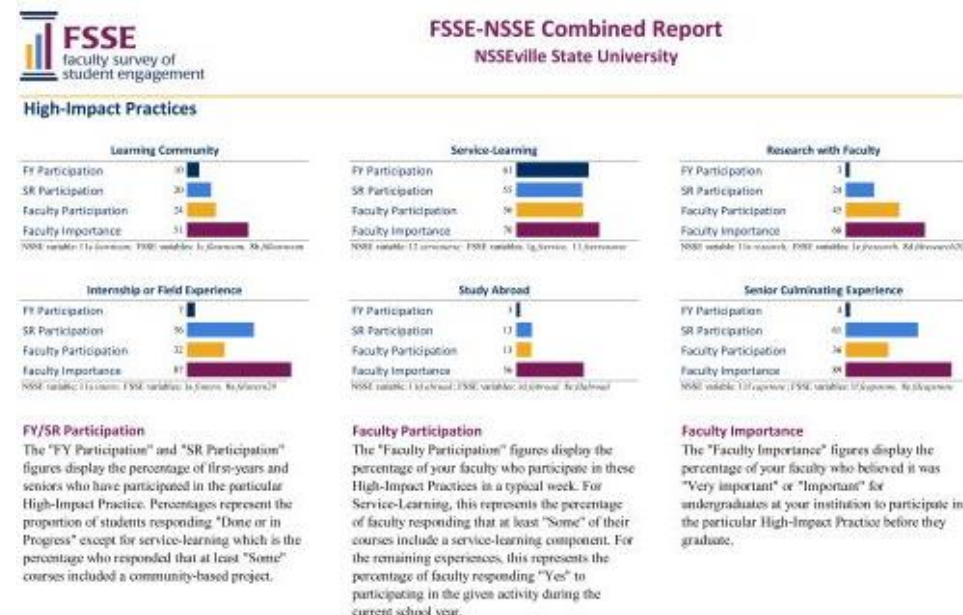
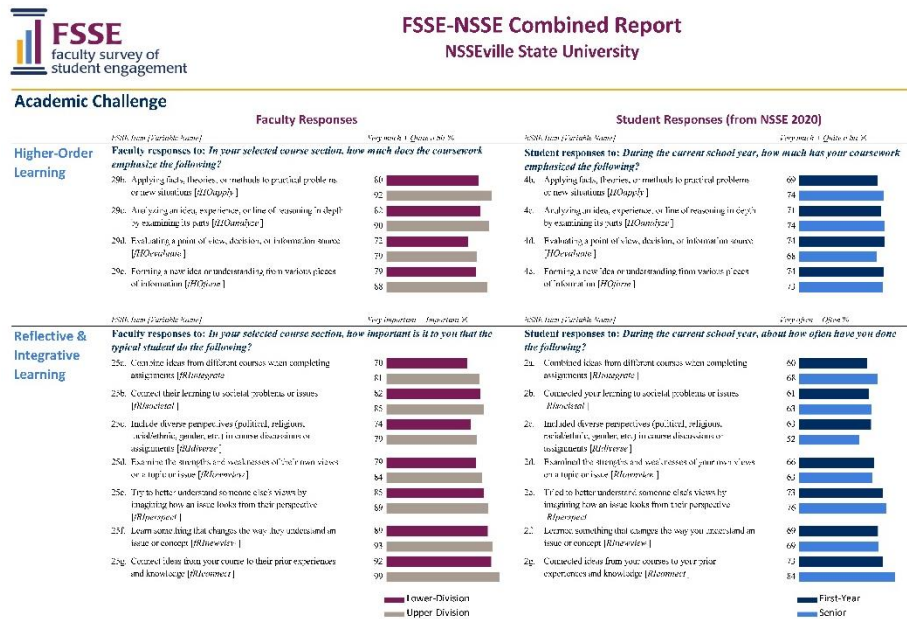
Faculty Survey of Student Engagement

*This is a facsimile of the FSSE survey (available at fsse.indiana.edu).
The survey itself is administered online.*

- 1. How important is it to you that undergraduates at your institution do the following before they graduate?**
Response options: Very important, Important, Somewhat important, Not important
 - a. Participate in an internship, co-op, field experience, student teaching, or clinical placement
 - b. Hold a formal leadership role in a student organization or group
 - c. Participate in a learning community or some other formal program where groups of students take two or more classes together
 - d. Participate in a study abroad program
 - e. Work with a faculty member on a research project
 - f. Complete a culminating senior experience (capstone course, senior project or thesis, comprehensive exam, portfolio, etc.)
 - g. Participate in a community-based project (service-learning) as part of a course
- 2. How important is it to you that your institution increase its emphasis on each of the following?**
Response options: Very important, Important, Somewhat important, Not important
 - a. Students spending significant amounts of time studying and on academic work
 - b. Providing support to help students succeed academically
 - c. Students using learning support services (tutoring services, writing center, etc.)
 - d. Encouraging contact among students from different backgrounds (social, racial/ethnic, religious, etc.)
 - e. Providing opportunities for students to be involved socially
 - f. Providing support for students' overall well-being (recreation, health care, counseling, etc.)
 - g. Helping students manage their non-academic responsibilities (work, family, etc.)
- 4. In a typical 7-day week, about how many hours do you spend on each of the following?**
Response options: 0, 1-4, 5-8, 9-12, 13-16, 17-20, 21-30, More than 30 hours
 - a. Teaching activities (preparing, teaching class sessions, grading, meeting with students outside of class, etc.)
 - b. Advising students
 - c. Research, creative, or scholarly activities
 - d. Service activities (committee work, administrative duties, etc.)
- 5. In a typical 7-day week, about how many hours do you spend on each of the following teaching-related activities?**
Response options: 0, 1-4, 5-8, 9-12, 13-16, 17-20, More than 20 hours
 - a. Preparing class sessions
 - b. Teaching class sessions
 - c. Grading assignments and exams
 - d. Meeting with students outside of class
 - e. Course administration (emailing students, maintaining course website, etc.)
 - f. Working to improve your teaching (self-reflection, meeting with teaching consultants, attending teaching workshops, conducting research on your own courses, etc.)
- 6. In a typical 7-day week, do you participate in the following activities?**
Response options: Yes, No
 - a. Working with undergraduates on research
 - b. Supervising undergraduate internships or other field experiences
- 7. During the current school year, have you taught an undergraduate course?**
Response options: Yes, No

Why Do FSSE?

- Institutions use FSSE to provide insight into NSSE results and to gain a better understanding of student engagement on their campuses.
 - Helps to gather information on the teaching side of “teaching and learning”





We Can Help!

- FSSE provides several resources to aid institutions in the analysis and presentation of FSSE survey results: <https://nsse.indiana.edu/fsse/working-with-fsse-data/index.html>
- Resources include:
 - *Using FSSE Data*: an overview of resources and tips for getting started
 - *Data User's Guide*: tips for facilitation in workshops, presentations, or discussions
 - *Analysis Resources*: syntax for common coding requests
 - *Psychometric Portfolio*: evidence for the validity of FSSE data
 - *Content Summaries*: FSSE results for content areas
 - *Interactive Data Visualizations*: aggregate results by faculty, course, and institution characteristics
 - Publications, presentations, webinars, workshops, etc.

FSSE Data & Reports

Traditionally

- FSSE survey data and reports available to authorized persons via the password-protected Institution Interface in August
- Participating institutions will receive...
 - Customized results of survey responses
 - A side-by-side pairing with student results from NSSE on educational practices
 - An overview of FSSE 2020 institutions and respondents
 - A data file of participant responses including demographics and scales like NSSE engagement indicators
 - Key overall findings from the latest NSSE administration including findings based on FSSE results
- Sample Reports
 - <https://nsse.indiana.edu/fsse/administering-fsse/sample-reports/index.html>

New in 2022!

- FSSE survey data and **selected interactive results** will be available via the password-protected **Qualtrics** platform **immediately** as data is collected
- Participating institutions will receive...
 - **Interactive online dashboards to view downloadable results**
 - A side-by-side pairing with student results from NSSE on educational practices
 - An overview of FSSE 2020 institutions and respondents
 - A data file of participant responses including demographics and scales like NSSE engagement indicators
 - Key overall findings from the latest NSSE administration including findings based on FSSE results
- Sample Reports
 - **Examples coming this summer!**

FSSE's Move to Active Reporting

FSSE
faculty survey of student engagement

A Summary of Faculty And Student Results: FSSE-NSSE High-Impact Practices

Faculty often develop and facilitate high-impact practices to bolster student outcomes. Studies demonstrate faculty who place importance of these educational experiences often influence student participation thus making it likely for students to obtain additional gains. Additionally, faculty who participate in high-impact practices also encourage student participation. Yet, these educational experiences often require many resources making it important to understand differences among faculty. This dashboard accompanies the NSSE 2020 Engagement Insights story on High-Impact Practices. <https://nsse.indiana.edu/research/annual-results/index.html>

FSSE
faculty survey of student engagement

A Summary of Faculty Results

Course Activities

The core FSSE survey asks about what percent of class time is spent on a variety of activities: lecture, discussion, small-group activities, student presentations or performances, independent student work, movies, videos, music, or other performances not involving or produced by students; assessing student learning, and experiential activities. This interactive data display can be used to explore how faculty structure their course and their use of effective teaching practices.

Administration Year: 2019

Disciplinary Area: (All)

Gender Identity: (All)

Racial/Ethnic Identification: (All)

Adjunct Status: (All)

Employment Status: (All)

Academic Rank: (All)

Course Division: (All)

Course Format: (All)

General Education Course: (All)

Carnegie Classification: (All)

Institution Control: (All)

Percentages

- 75% or more
- 40-74%
- 20-39%
- 1-19%
- 0%

FSSE Scale Scores

Average FSSE Scale Score

- Higher-Order Learning
- Reflective and Integrative Learning
- Learning Strategies
- Quantitative Reasoning
- Collaborative Learning
- Discussions with Diverse Others
- Student/Faculty Interaction
- Effective Teaching Practices
- Quality of Interactions
- Supportive Environment

See activities: FSSE Interactive Reports. Retrieved from fsse.indiana.edu.

Section 1: Set the disciplinary area, institutional characteristics, and administrative characteristics including those in section 2.

Administration Year: 2020 | Disciplinary Area: (All) | Carnegie Classification: (All)

Faculty importance and participation of faculty and student

FSSE asks faculty how important it is to them that undergraduates at their institution do the following activities and the rate of first-year and senior undergraduate participation at their institution. (Somewhat important or Not important) for undergraduate participation before graduation.

Internship, co-op, field experience, student teaching, or clinical placement

Faculty importance of internships | Faculty supervising internships

Learning community or some other formal program where groups of students meet

Faculty importance of learning communities | Faculty supervising learn. comms. (2020 only) | First-year participation | Senior participation

A study abroad program

FSSE
faculty survey of student engagement

A Summary of Faculty Results: Sense of Belonging & Teaching Environment

Faculty are increasingly asked to learn how to be more responsive to diverse student needs under rapidly changing circumstances. Institutions can support faculty to do so by creating networks and community amongst colleagues and a teaching environment that promotes a healthy atmosphere supportive of improvement and innovation. Understanding faculty sense of belonging and perceptions of teaching environment at their institution can be useful to starting conversations to improve these aspects of support for faculty work.

Disciplinary Area: (All) | Racial/Ethnic Identity: (All) | Employment Status: (All) | Sexual Orientation: (All) | Course Format: (All) | Carnegie Classification: (All)

Gender Identity: (All) | Adjunct Status: (All) | Academic Rank: (All) | Course Division: (All) | General Education Course: (All) | Institution Control: (All)

Looking Within Faculty Experiences

Sense of Belonging

Frequency of Agreement

	Strongly disagree	Disagree	Agree	Strongly agree
Comfortable being myself	1.9%	7.0%	46.3%	44.8%
Valued by institution	5.6%	15.7%	49.8%	29.0%
Part of the community	3.6%	15.1%	52.9%	28.4%

Comfortable being myself

Valued by institution

Part of the community

Teaching Environment

Frequency of Agreement

	Strongly disagree	Disagree	Agree	Strongly agree
Comfortable being myself	1.9%	7.0%	46.3%	44.8%
Valued by institution	5.6%	15.7%	49.8%	29.0%
Part of the community	3.6%	15.1%	52.9%	28.4%

Comfortable being myself

Valued by institution

Part of the community

Legend: Strongly agree (dark purple), Agree (yellow)

Getting Started: Registration

- Opens: late spring (with NSSE)
- “Closes”: End of September (with NSSE)
 - We accept registrations through January but be prepared to expedite survey customization decisions to meet survey preparation deadlines
- Register online!
 - <https://nsse.indiana.edu/fsse/registration-pricing/index.html>
- Contact Information
 - Campus Project Manager (CPM)
 - Campus Administrative Contact (CAC)
 - Auxiliary Campus Contact (ACC)
 - Billing Contact
 - Information Technology Contact (ITC)
- Estimate
 - Institutions will provide an initial estimate of the # of faculty to be surveyed
- Sign FSSE Participation Agreement

Getting started: Pricing

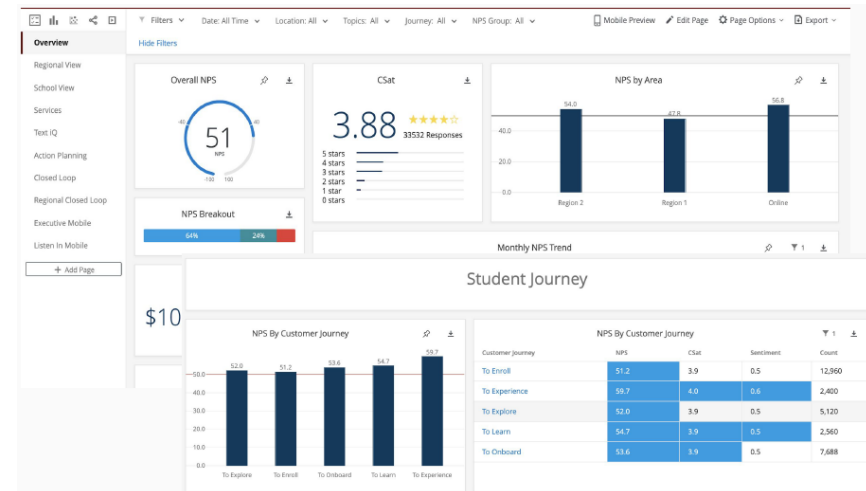
- Registration fee for NSSE and FSSE = \$300 for both administrations
- Registration fee for FSSE without NSSE = \$300
- Survey fees:

SAMPLE SIZE	ADMINISTRATION FEE
Fewer than 100	\$800 + \$1.50 per sampled instructional staff
100 or more	\$1,000 + \$1.50 per sampled instructional staff

- Topical Module, First one = \$0 (free), Second one = \$250
- Consortium = \$200

Getting Started: After Registration

- FSSE staff will review registration submissions to ensure that contact information is completed correctly, and survey estimates are appropriate
- Once approved, institutional contacts will receive an email confirming registration approval and information regarding...
 - Access and use of the Institutional Interface page
 - Dates of when to complete the **customizations and action items** for survey preparation
 - The FSSE participation agreement
- Access NSSE/FSSE data & reports from previous administrations through the Institution Interface
- Starting in 2022, a new portal will collect registration information and provide options for customization
- Sneak peek:





Customizing FSSE

Selecting your customization choices will happen in the fall:

1. Select Topical Modules to be appended to the FSSE instrument
2. Enroll in Consortium participation
3. Select (e)mailing recruitment schedule
4. Edit recruitment messages
5. Create grouping variable for analyses & submit population file



Topical Modules

Short sets of questions on salient issues in higher education that allow campuses to explore important topics in greater depth

- Current Topical Module options:
 1. Academic Advising (NSSE parallel)
 2. Civic Engagement (NSSE parallel)
 3. Experiences with Writing (NSSE parallel)
 4. Inclusiveness and Engagement with Cultural Diversity (NSSE parallel)
 5. Teaching Professional Development
 6. Transferable Skills, Career, and Workforce Development (NSSEparallel)
 7. Scholarship of Teaching & Learning
- <http://fsse.indiana.edu/html/topicalModules.cfm>



Consortium Participation

- NSSE consortium participants additionally can add parallel consortium questions to a FSSE administration
- Examples:
 - Catholic Colleges & Universities
 - Consortium of Online Learning Experiences
 - Kentucky Council on Postsecondary Education
 - Mission Engagement Consortium for Independent Colleges
 - Work Colleges
- <http://nsse.indiana.edu/html/consortia.cfm>

Faculty Mailing Schedule

Institutions will select a survey recruitment mailing schedule from a set of options

Invitation	Reminder 1	Reminder 2	Final Reminder
Tues., March 24	Mon., March 30	Thurs., April 2	Wed., April 8
Tues., March 31	Mon., April 6	Thurs., April 9	Wed., April 15
Tues., April 7	Mon., April 13	Thurs., April 16	Wed., April 22

Note: these are previous dates



Customize FSSE Recruitment Messages

- Recruitment messages are comprised of pre-approved IRB templates in which the text cannot be edited (4 total)
 - Exceptions may be made for participating Canadian Institutions as certain words may hold different meanings within a Canadian context.
- Institutions may customize the invitation message by adding a recognizable signatory to reinforce the idea that their college or university is soliciting their feedback
- Reminder 1, Reminder 2, and the Final Reminder message templates will stay the same
 - Sending messages from FSSE staff has shown to improve faculty response rates and faculty confidence in results



FSSE Population File

- Institutions have the option to choose which instructional staff they would like to survey. Institutions should select faculty, instructors, and/or graduate students who have taught or are planning to teach at least one undergraduate course during the current academic year.
- Information Needed:
 - First and last name
 - Email address
 - Instructional staff prefix (e.g., Dr., Ms., Fr., etc.) (*Optional*)
 - Grouping variable (*Optional*)
- Download the template and submit the document on the as a .CSV

FSSE Population File: Grouping Variable

- Institutions may include a grouping variable in their population file (template column “GROUP1”). It allows institutions to conduct analyses specific to their institution.
- Any personally identifiable information may not be contained with the grouping variable and will be reviewed by FSSE staff at the time of submission.
- Examples of grouping variables that may work well:
 - Participation in professional development opportunities
 - Attendance at events offered by the campus teaching and learning center
 - Campus on which an instructional staff member teaches (for multi-campus institutions)
 - Participation in special teaching and learning programs or instructional staff learning communities
- Things **NOT** to include in your grouping variable:
 - Social security numbers (SSNs) OR institutional ID numbers
 - Instructional staff names or other unique identifiers
 - Categories of instructional staff which include fewer than three people
 - *Instructional staff disciplinary area



FSSE IRB & Confidentiality

- Instructional staff responses to the survey are confidential to their institution
- FSSE staff will
 - Assign a survey identification number, *surveyid*, to all participants
 - Never report individual information such as which staff member has or has not responded to the survey
 - Not include respondent names and email address not in data
 - 60 days after survey administration the link between the *surveyid* and instructional staff names and email addresses are destroyed
- FSSE staff make every effort to ensure that faculty responses are not individually identifiable
 - Participating Institutions agree to specific procedures and safeguards
 - Research protections are presented in the informed consent ([hyperlink to informed consent](#))



Survey Launch: Preparing for Administration

- **Preparing for FSSE Survey Message Delivery**
 - Each year, several institutions' systems treat our e-mails as spam, which prevents them from reaching their instructional staff.
 - We will provide a resource called "Preparing for Message Delivery," before administration begins, containing information regarding how to prepare your campus email system to receive FSSE messages.
 - This information should be shared with appropriate information technology staff at your institution.
- **Pre-Survey Announcement (optional but strongly encouraged):**
 - The pre-survey announcement precedes the Invitation, its purpose being to alert instructional staff of the upcoming survey administration.
 - Unlike all other contact, the Pre-survey Announcement is sent directly to instructional staff by you.

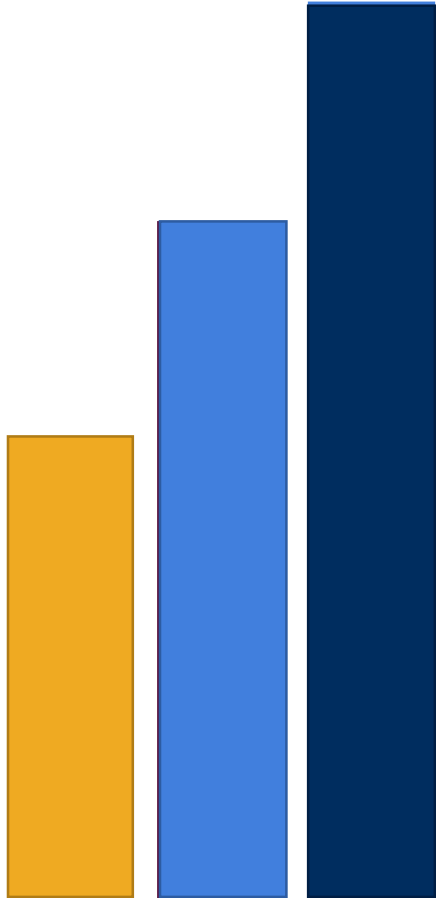


Survey Launch: FSSE Survey Administration

- FSSE administrations begin in early March (dependent on previously created schedule)
- FSSE will handle all aspects of the survey administration process
- Response and mailing returned rates will be updated on the new portal
- Select, interactive results will be available in real time
- The survey instrument closes early to mid May for all institutions
- Additional reports, including the NSSE-FSSE combined report, will release throughout the summer and fall

FSSE FAQs

- FSSE frequently asked questions/answers (faculty perspective)
<https://fsse.org/includes/faq.cfm?loginid=7D9DF4DAD4>
- Will FSSE provide a list of those faculty members that have not participated in the survey?
 - No, unfortunately we cannot to help maintain confidentiality.
- Can I use an incentive to encourage faculty participation?
 - Kind of, but not through us; we find faculty seem to be indifferent to incentives and there are difficulties with confidentiality (see above)
- Does FSSE offer a report of comparison groups across institutions?
 - No, given the vast differences in institutional types, resources, and faculty emphasis FSSE focuses on comparisons within, but do feel free to use our aggregate reporting tools to create benchmarking and comparative information!



Thanks for joining us!

Find our slides and other information about FSSE at
fsse.indiana.edu

Email: fsse@indiana.edu

Blog: NSSEsightings.indiana.edu

Twitter: [@NSSEsurvey](https://twitter.com/NSSEsurvey)

