

Weathering Climate Change in Archaeology: Conceptual Challenges and an East African Case Study

Nik Petek-Sargeant  & Paul J. Lane 

Research on the social dimensions of climate change is increasingly focused on people's experiences, values and relations to the environment as a means to understand how people interpret and adapt to changes. However, a particular challenge has been making seemingly temporally and geographically distant climate change more immediate and local so as to prompt behavioural change. Environmental humanists, anthropologists and historians have tried to address the challenge through analysis of the experiences, philosophies and memories of weather. Archaeology, commonly preoccupied by hard science approaches to climate change, has largely been absent from this conversation. Nevertheless, with its insights into material outcomes of human experiences and relations, it can become integral to the discussion of 'weathering' climate change and historicizing weather. Here, drawing on the subtleties of responses by Ilchamus communities in Kenya and using a mix of historical and archaeological sources, we highlight their experiences of weather since the end of the Little Ice Age and explore the potential of building archaeologies of weather.

Introduction

Climate change is one of the most prominent ecological and social threats to Earth's co-inhabitants, as well as a major public anxiety of our times, notwithstanding the current health, economic, and humanitarian crises created by the COVID-19 global pandemic. Over the last decade and more, our attention has been routinely vied for by government bodies (e.g. Department for International Development 2017; Šooš *et al.* 2017), international NGOs (Greenpeace 2019; Hestres & Hopke 2017), the private sector (Iceland 2018; Marris 2020) and multiple others, to become aware of and account for climate change and its effects, which include higher risks of flooding, fires and other extreme weather events. Climate change motivates large, sustained, socio-political protests, such as the actions taken in 2019 and early 2020 by Extinction Rebellion in the UK (British Broadcasting Corporation 2019; Extinction Rebellion 2019; Zand & Fawbert 2019), and the protests in

2018–19 against the construction of a coal plant in Lamu, Kenya, that resulted in a court injunction halting the project (Ochieng 2019). We are also regularly exhorted to diminish our carbon 'footprint', such as by becoming vegan or vegetarian (Springmann *et al.* 2018; Wikipedia *n.d.*) and/or avoiding travelling by air (Johnsson 2018; Saner 2019). Many institutions, from archaeology and heritage boards (e.g. Fluck 2016; Markham *et al.* 2016) to city councils (CLASP 2016; Yates *et al.* 2018) and multinational insurance companies (e.g. Reichenmiller *et al.* 2010), have been changing their strategies and operating models over recent years in order to prepare for climate change.

More intriguing, however, is the rise in the discussion on the need to 'weather' climate change (Fig. 1). 'To weather' in this context is used to convey the need to create contingencies for a rough climate future, commonly portrayed through adverse weather. The expression (acknowledging that 'to weather' something is an English expression and might not work in other language contexts)



Figure 1. Publications warning of weather uncertainty and the need to weather climate change. (a) Advertisement by APA Insurance Limited in Nairobi in March 2020; (b) Weathering climate change report by the Pennsylvania Department of Conservation and Natural Resources from 2010; (c) Weathering the Storm report by McGray et al. (2007) on climate change vulnerabilities; (d) Nakashima et al.'s (2012) volume Weathering Uncertainty supported by UNESCO; (e) Weathering Climate Change report from 2010 by insurance company Swiss RE (Reichenmiller et al. 2010); (f) East Midlands county climate change guide Weathering the Storm for small businesses (CLASP 2016).

interlocks climate and weather. The social and cultural aspects of this relationship and the potential to communicate about climate change in new ways through weather have been explored by environmental humanists and others. One of the goals is to bring

climate change closer through embodied encounters with related, but conceptually and experientially different, emerging weather patterns, and to overcome the epistemic distancing that can occur when non-specialists are presented with complex data (Hulme

2007). As Rooney (2019, 177) has observed, although ‘graphs and charts might illustrate the significance of climate change over time, they do not always convey the myriad of pulses, pauses, circulations and ebbs and flows that are generated in and across time and place’. Unfortunately, archaeology is noticeably absent from most of these discussions, even though researchers recognize the need for long-term studies of the implications and understandings of climate change (e.g. Hulme 2015). Additionally, the discipline currently has only a marginal presence in the environmental humanities, even though it combines knowledge and skills from geology and the environmental, social and economic sciences (Riede 2018).

Our goal in this paper is thus to explore the potential of building archaeologies of weather and how these can contribute to new ways of approaching climate change and what it means to ‘weather’ climate change. With its insights into the material outcomes and expressions of human experiences, and associated landscape and environmental changes, archaeology should strive to become more integral to environmental humanities and provide longer-term data when approaching environmental issues. Using a mix (material, oral, written, ecological) of historical sources on East African communities, with a particular focus on the Ilchamus community in Kenya, we revisit the data on how communities lived through the end of the Little Ice Age (LIA) and subsequent periods. We especially highlight the subtleties of community responses to climate change and past weather experiences. Before doing so, however, some additional conceptual framing of the study is called for.

Relating to climate through weather

The North American Space Agency (NASA) states that the difference between climate and weather is ‘a measure of time’ (Gutro 2017) and the characteristics of a particular climate are determined by ‘averaging’ weather, usually across a period of 30 years (IPCC 2014, 120). The temporal scale, however, is a critical stumbling-block in the general conceptualization of climate change. Extreme weather events and their manifestation in forms such as widespread flooding or prolonged water shortages are very effective in presenting climate change, making its effects immediately experiential (Kahan 2014; Pillatt 2012), yet they also help to obscure the longer-term processes that have given rise to an increased frequency of such events and which make ongoing climate change a ‘long threat’ (Dickinson 2009) akin to other ‘slower emergencies’ (Anderson *et al.* 2019).

Expressions such as ‘weathering climate change’ and ‘climate change is now’ poignantly point to a wider conceptual problem created by the juxtaposition of the immediate experience of weather and the long-term patterns of a climate to which people and communities are currently adapting and around which they endeavour to build their social, economic and food-production systems (Hastrup 2009; Pas 2018; Turner & Clifton 2009). For example, the latter expression implies that ‘climate change’ will be finished at some point in the future and/or that it will become ‘normal’, while it can also falsely equate freak weather events with climate. Both expressions succeed in bringing climate change into the immediate present. On the other hand, the spatial and temporal distance between the actions that need to be taken to mitigate climate change and the lack of an immediate result creates a challenge for understanding human experiences of climate change (see below). Time, as Brace and Geoghegan (2011, 290) observe, ‘is a *sine qua non* in the study of climate change’, not simply in terms of measuring moments of past, present and predicted future change, or even the duration and temporality of events and the differential tempos of different processes as explored by Bailey (2007), but also in more metaphysical and semiotic ways that address the intersection of past, present and future in acts of habitation and the tasks of ‘weathering’.

Weather, like climate, has histories and possible futures, and current weather events all have their origins in the cumulative emissions of the past and present (Endfield & Veale 2018; Malm 2016; McKibben 1989). The Intergovernmental Panel on Climate Change’s (IPCC) Fifth Assessment Report (2014), for instance, had already identified recent extreme weather changes as a consequence of longer-term anthropogenic climate change. These histories are important also for understanding attempts to discipline the weather. The current understanding of weather in the Western world, for example, as a morally neutral geophysical phenomenon that can be understood and measured through quantifiable elements such as precipitation and temperature has its origins in the eighteenth century. Then, new observational protocols, measurements and instruments were developed with which weather-watchers tried to discern patterns (Golinski 2007; Janković 2000; for the Victorian era, see Anderson 2005). This numerical, empirical understanding of weather now also forms part of the IPCC’s definition and use of weather in its reports (IPCC 2014, 119 & 138), which generally obscures the direct and immediate impact humans can have on the weather and limits the types of

inquiries it facilitates mostly to biophysical issues (Vanek 2018). Yet that quantitative records and qualitative human experiences are intimately connected is inescapable, as tellingly indicated by the example of the riots on 30 April 1992 following the non-guilty verdict in the Rodney King police brutality trials which caused a thermal anomaly across 85 sq. km of Los Angeles, USA, resulting in local weather-making: a social weather event caught by satellite measurements that is otherwise obscured by numbers (Arike 2006, cited in Vanek 2018, 2).

The human predisposition to relate to climate through weather (Demski *et al.* 2017; Kahan 2014) provides an opportunity to make climate change more immediate and interactive, and to embed us spatially and temporally in it. Weather is the lens through which human relationships with climate are most easily mediated (Hulme 2008). This contrasts with the general perception of climate change as separate and distant from everyday lives (Slocum 2004). Academics from various disciplines have argued that Western understanding of weather as well as climate needs to be re-cultured (Hulme 2015). The environmental humanities, particularly, have promoted the need to reframe environmental and climatic issues as fundamentally social and human challenges (Neimanis *et al.* 2015). As in the climate communication field, where soft factors such as values and motivation have been found to be central to climate action (Moser 2016; Pearce *et al.* 2017), their importance is also stressed by environmental humanists. The ‘imaginary’—an explorative, sense-making space wherein individuals negotiate and cultivate relations to the material world, others and competing worldviews, while also creating their identity and defining their values across space and time (Appadurai 1996)—already includes values and attitudes towards nature. These sense-making imaginaries shape individuals’ interactions and everyday worlding practices and create nodes of interaction with the non-human, including nature and weather. Exploring and addressing imaginaries can enhance responsiveness to environmental issues and willingness to take mitigative action, not only locally but at a larger spatio-temporal scale.

Weathering history

Historians and geographers have largely focused on the origins and development of the western scientific imaginary of climate and weather in the past few centuries in different spatio-temporal contexts (Barboza 2009; Offen 2014). Analysing the

‘domestication’ of weather through new measurements and new technologies (e.g. Rayner 2009; Readfern 2020; Janković 2000), the long-term social, economic and ecological consequences of extreme weather events (Brönnimann *et al.* 2018; Endfield & Veale 2018 and chapters therein; Rohr 2009) and the ‘localization’ of past and present weather through local cultural meanings comprise some of the more dominant lines of research. Central also to much of this work have been discussions around the attachment of memories to specific places and the memorialization of place during weather events. These help create local imaginaries of weather and climate (De Vet 2013; Endfield & Naylor 2015; Hall & Endfield 2016; Hulme 2012), where climate is an idea that stabilises the unpredictable weather (Hulme 2015).

Despite the richness of these insights, some scholars clearly feel that past experiences of weather are only accessible when textual sources are available, severely limiting the temporal and spatial range of analyses, and also the nature of the particular ‘voices’ that are heard. Writing about the challenges of reconstructing perceptions of weather events and responses to climate change in Africa, the Americas and Australia during the seventeenth century, Parker (2013, 445), for example, states that ‘historians can reconstruct the experience of their inhabitants in the seventeenth century only for those areas where literate residents or travellers from other regions—most of them Europeans—compiled written records that have survived’. Such views are far from uncommon, and while they may reflect a widespread and more general bias against the value of material evidence as opposed to textual sources for reconstructing the past, such attitudes may also derive in part from the relative lack of engagement by archaeologists with how people in the past ‘weathered’ climate change.

While there has been a strong focus among historians and geographers on climate and weather as analysed (although see e.g. Waites 2018), there has been a growing focus among anthropologists and others on weather and climate as *lived*. The feminist philosophers Neimanis and Loewen Walker (2014), for example, have argued for a re-framing of current Western abstracted experience of climate change and weather. To address the epistemological distancing of climate change narratives and associated weather events and to raise awareness of humans as weather-makers (e.g. through their carbon emissions, the release of silver iodide crystals to make rain, or through concrete buildings that trap heat), Neimanis and Loewen Walker appeal to human

senses of responsibility and responsivity. They describe our relationship with climate as one of ‘weathering’ and ‘weather worlding’. While playing on the meaning of ‘weathering’ (being exposed and/or going through something resulting in an altered state), they imagine our bodies as entangled with other forces, as ‘worlding’ by experiencing the intensity of weather and climate change and giving them meaning. Our bodies then become archives (as do architecture, social inequalities, etc.), contracting time between the past, present and possible futures, thus ‘thickening time’ and re-thinking the temporal narrative of something distant, bringing it spatially and temporally closer (Neimanis & Hamilton 2018).

Rooney (2018), building on Neimanis and Loewen Walker’s theoretical frames, has advocated for shaping public imaginaries through environmental pedagogies and engaging children’s relations to weather as part of a learning experience about human–environment entanglement. By attending to the sensory experiences of weather, she argues, there is an opportunity to draw attention to climate vulnerabilities, make climate change easier to comprehend and make distant futures more immediate. Similarly, Vanek (2018) draws on the papers by Neimanis and Loewen Walker (2014) and Neimanis and Hamilton (2018) to find examples of ‘weathering’ in past literature (see e.g. Chiari 2019; Harris 2015; Tyler 2017) and how weather, bodies and the material have been used to portray differential experiences of weather and how personal conditions can exacerbate even ‘normal’ weather.

Ingold (2007; 2011), in his phenomenological explorations of *how* and *in what* people and non-human things relate and become entangled, identifies weather, or ‘the weather-world’ to use his concept, as the medium that we inhabit, perceive in and relate to the material world. The medium, which is a part of the landscape, is in a constant state of generative flux, transforming the landscape (through rain, mist, facilitating erosion, etc.), giving people experiences through which they can know the land, and therefore allowing it to come into ‘being’ (Ingold 2008). Through weather ‘we do not see different things, but we see things differently’ (Ingold 2011, 130). Ingold (2005; 2011) has also lamented the absence of research on weather in anthropology and archaeology, even though weather is commonly talked about in the field (Crate & Nuttall 2016a). Despite the fact that weather or weather-related understandings of the world have a long history in anthropology (see e.g. Colson 1948; Solway 1994), this neglect is largely because weather

and climate were typically treated until recently only as a backdrop to social practice and belief, even when understanding the weather is accorded great cultural and social significance, as among the Ihanzu of Tanzania, who built their economy around rain-making and granted the rains (or their failure) the capacity either to bring down regents or keep them in power (Sanders 2014).

The publication of several volumes on the anthropology of climate change in the last two decades, however, suggests there is a new interest in weather’s place in society. Whereas contributors to Strauss and Orlove (2003 and chapters therein) focused on how weather and climate are experienced in different time frames and how responses to them are reflected in language, the contributions to other edited collections have discussed the growth of climate change anthropology, how climate change is present among ‘frontline’ communities and how to translate those accounts for scientists, as well as defining the role of the anthropologist in tackling and communicating contemporary climate change (Baer & Singer 2014; Crate & Nuttall 2016b; de Wit *et al.* 2018; Dove 2014). There has also been a growing concern among anthropologists with encountering climate change in the field and how it prevents reading the weather and landscape (Crate & Nuttall 2016c; Dodds & Nuttall 2019; Järpe 2007; Turner & Clifton 2009), for example. There is concern too that terms like ‘climate change’ do not capture people’s experience of (unusual) weather or accommodate broader socio-cultural dimensions and beliefs, or how to approach the space between weather and climate (Baer & Singer 2014; de Wit 2018; de Wit *et al.* 2018; Jerstad 2016; Sherratt *et al.* 2005). People’s observations of weather can be seen as only valuable for what they can tell us about climate change (e.g. Savo *et al.* 2016), rather than what it means to experience unusual weather, and anthropological data are often thought of as anecdotal to climate change (Crate & Nuttall 2016a).

Many of the current discussions, interestingly, contain traces of concerns that were raised during the rise of meteorology as a science, which included the significance of the experiential in measurements of the weather and anxieties over the loss of ‘humanity’ (Golinski 2007; Janković 2000). However, what has been lacking from these recent discussions, even though many case studies engage with materials-related weather expressions, has been any real engagement with archaeological data or with how specific efforts at ‘weathering climate change’ might be inferred from material traces available for archaeological study.

Climate and weather in archaeology

As both a historical and an anthropological discipline, archaeology should be well qualified to discuss measures of climate change through time, as well as how people might respond to and experience novel climatic conditions. Archaeology has certainly become enmeshed in climate change and Anthropocene research and considers both as among the main targets for future work (Armstrong *et al.* 2017; Kintigh *et al.* 2014). The discipline is certainly making valuable contributions to understanding past sequences of changes and responses to climatic events (Marchant *et al.* 2018; Rockman 2012; Van de Noort 2013), and archaeology has become an essential discipline in holistic studies of landscape historical ecologies (Crumley *et al.* 2017; Plieningen *et al.* 2015; Szabó 2015). But archaeology has, perhaps, also become too enamoured with scientific views and approaches to climate and environmental change and science modes of communicating results. Although intensely researching past adaptations that could contribute to sustainable development solutions, there is little concrete evidence of archaeological results being implemented as viable and applied solutions in modern contexts (Lane 2015), with a few notable exceptions (e.g. Kendall & Drew 2016; Logan 2020; Spriggs 2015). Additionally, archaeology's marginal role in environmental humanities and climate change communication indicates that the discipline needs new ways of interpreting and writing about climate change (Riede 2018; Roddick 2018).

To be clear, discussing and analysing the experience of going through climate change has certainly *not* been neglected in archaeology, as recent studies amply illustrate (e.g. Nelson *et al.* 2010; Price & Gräslund 2015; Shoemaker 2018; Wright *et al.* 2015). In marked contrast, however, weather, the medium through which climate is experienced, helps form quotidian experiences and in many cases determines daily activities, has rarely featured in archaeological research. Weather, like climate change, is historical as it is part of individual and community memories and certain kinds of weather in a particular place are typically expected based on past experiences and form the basis of most types of lay weather forecasting (Janković 2000; Orlove *et al.* 2010). We might therefore need to rethink the material record to better understand how people 'weathered' climate change, adapted to it and made it 'normal'. An archaeology of weather can consider the seasonal and daily changes to people's life and if the change in climate was perceptible, for example. Research might also explore the material dimensions of weather-control

institutions and practices, when, where and why they emerged, how they were sustained and why such practices might have been abandoned, a potential for such archaeological investigation perhaps being the weather-control dimensions of the Pueblo katsina cult (Adams 1991). Highlighting everyday experiences can also create powerful new narratives and subtler images of what it means to live through climate change. Our aim should be to reduce epistemic distancing occurring between scientific explanations of the ongoing climate crisis and our present selves and our actions (Hulme 2007; Rooney 2019), and to contribute actionable cultural information.

The potential of including weather in archaeological analyses is especially high in regions where weather has a strong impact on seasonal activities, where climate change is particularly strongly felt (e.g. the Arctic circle (Dodds & Nuttall 2019; Hastrup 2009; Turner & Clifton 2009)), or in areas and periods where writing diaries was popular and necessary, as in Early Modern Europe (Adamson 2015; Pillatt 2016), or when routinely recorded, as in ship logbooks (e.g. García-Herrera *et al.* 2018; Nash *et al.* 2015; Wheeler & García-Herrera 2008) and at European mission stations (e.g. Nash & Endfield 2002). The potential is also high where oral histories have strong traditions of documenting cultural responses to climate stress (e.g. Webster 1980) and indigenous perceptions of climate change and approaches to weather forecasting are available (Radeny *et al.* 2019). However, while both the latter categories are commonly available for many parts of Africa, unlike some other continents and regions, an archaeology of weather remains largely unexplored on the continent. A notable exception to this is the research on archaeological expressions of rain-making and cultural responses to periodic drought in southern Africa, among both farming (e.g. Aukema 1989; Huffman 2009; Murimbika 2006; Schoeman 2006; 2009) and hunter-gatherer populations (e.g. Challis *et al.* 2008; Kinahan 1999; Prins 1990).

Weathering change around Lake Baringo, Kenya

A useful example of where longer-term climatic changes require weather-centred approaches is provided by Kenya's Lake Baringo lowlands. Located in the Central Rift Valley, the Lake Baringo area is a fast-changing woodland-bushland savanna where vegetation responds rapidly to increases in either precipitation or aridity. Much of the area is characterized today by relatively bare grounds and unstable and erodible soils, typical for non-equilibrium ecosystems where vegetation production is unpredictable and

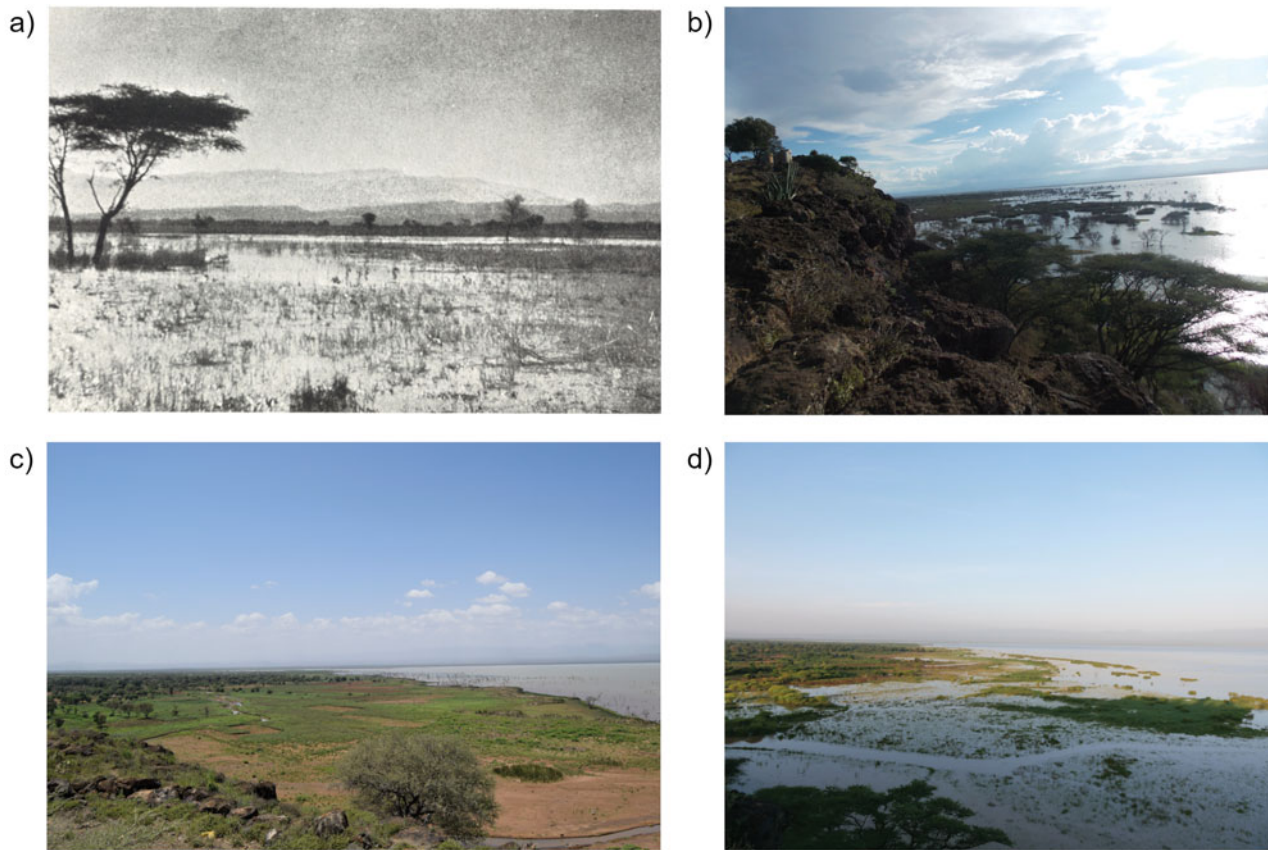


Figure 2. Flooding at Lake Baringo in (a) 1900 (as seen in Johnston 1904, 17, looking east); and from Loiminange Fort looking west (b) in September 2014; (c) in February 2016 showing a receded lake shore; and (d) in March 2020 (© Nik Petek-Sargeant). All pictures taken at the southeast corner of the lake.

inconsistent (Boles *et al.* 2019; Kiage & Liu 2009; Vehrs 2016). Although the lake and the surrounding lowlands have a semi-arid climate receiving c. 600 mm of rain per year, the lake's 6200 sq. km catchment includes semi- and sub-humid mountain ranges where its two perennial rivers, the Molo and Perkerra rivers, originate. As a shallow amplifier lake, Baringo is highly susceptible to changes in rainfall and river discharge, as evidenced by the floods experienced here during recent high-rainfall years in 2013, 2019 and 2020 (Degefa *et al.* n.d.; Johansson & Svensson 2002; Nation Team 2020; Republic of Kenya 1984) (Fig. 2). Moreover, the lowlands experience below-average rainfall every 3–4 years with severe droughts occurring on a decadal cycle. The averages, however, disguise the reality that due to the very localized and inconsistent nature of rainfall each year, there are always one or more localities experiencing drought in any single year (Kipkorir 2002; Rowntree 1989; Sutherland *et al.* 1991).

Between the end of the eighteenth and the beginning of the nineteenth century, East Africa

experienced a multi-decadal sub-continental drought marking the end of the Little Ice Age (LIA) in the region. This mega-drought is widely recorded in the region's limnological and palaeoecological records, with multiple proxies indicating lake-level drops or complete desiccation (Bessemis *et al.* 2008; De Cort *et al.* 2013; Halfman *et al.* 1994; Stager *et al.* 2005; Verschuren *et al.* 2000). It is also recorded in many of the oral histories of different ethnic groups across the wider region, some of which also recall widespread social collapse and reconfiguration (Bollig 2016; Lamphear 1972; Simpson, Jr. & Waweru 2012; Tiki *et al.* 2013), prompting the historian David Anderson (2016) to refer to this period as the 'Great Catastrophe'. Lake Baringo and the nearby Lobo swamp, for example, dried up, while neighbouring Lake Bogoria turned shallow (Ashley *et al.* 2004; De Cort *et al.* 2013; 2018; Kiage & Liu 2009). Based on fungal spore evidence from lake cores, the area around these lakes experienced a depopulation of ungulates (wild and domesticates) and people, and as herding and agriculture likely became

unviable the remaining population turned to hunting and gathering (Kiage & Liu 2009; Petek 2018; van der Plas *et al.* 2019). The desiccation of Lake Baringo is also indicative of the rains failing throughout the catchment, while in view of the general fragility of the environment, changes would have been quick and especially severe in the lowlands.

By around the 1830s, the drought was ending and conditions began to ameliorate. It was around that time that small groups from the surrounding hills joined an established community on the southern lowlands, eventually forming the Ilchamus ethnic community (Petek & Lane 2017). Other groups continued to immigrate to Ilchamus throughout the nineteenth century, the majority of whom settled in two villages known as Ilchamus Leabori and Ilchamus Lekeper. Their origin stories are intimately related to the Great Catastrophe. The oldest generation of settlers in these oral histories are referred to as ‘the naked people/people with nothing’ (*Ilmeichopo*), while the establishment of the villages is linked to finding and eating dead animals and accounts of the origins of individual clans tell of destitution.¹ The major socio-ecological disruption caused by the Great Catastrophe created an environment of anti-structure where new social and economic relationships could be formulated, eventually promoting a sense of *communitas* (*sensu* Turner 1969), and which among the Ilchamus also converged around an irrigation system (Petek & Lane 2017).

The irrigation system at the older settlement of Ilchamus Leabori was probably established around 1840, diverting water from the Perkerra River; aerial photographs from 1950, by which time it had been abandoned for over 30 years, show that it stretched across *c.* 643 ha (Petek 2018). The system consisted of furrows and canals that dissected the land into small fields that were further divided into squares each of 10 sq. m with ridges and basins that could be ‘flooded’. Millet and sorghum were the main crops, although cowpea, various greens and gourds were also grown as indicated by textual, oral historical and archaeobotanical data (Anderson 1989; Petek 2018). The irrigation system’s agricultural cycle was divided into different periods that were determined by seasonality. The periods were sufficiently flexible to accommodate the variable duration of dry and rainy seasons. The timing of rituals associated with planting and irrigation also depended on reading the weather. If drought was indicated by persistent hot weather, rain-making rituals were undertaken by women offering prayers aimed at cleansing the land, while elders ensured fertility by spreading

sheep blood, dung and fat at dams and on the edges of the irrigation system (Anderson 1989; Lenachuru 2016).

The nineteenth-century irrigation system and villages stand in contrast to the period preceding the Great Catastrophe. The duration of occupation and the scale of investment into the irrigation system left rich archaeological records and facilitated the establishment of vegetation features that made furrows and settlements visible on remote-sensing imagery. On the other hand, systematic archaeological surveys undertaken in the lowlands have only recorded a few scatters that can be linked to the so-called Pastoral Iron Age (PIA) of the early and mid second millennium (Barthelme *et al.* 1983; Merrick 1982; Petek 2018). Additionally, none of the kinds of glades or groves (vegetation features indicating human occupation due to the accumulation and subsequent decomposition of dung from continued livestock corralling) that have been shown to mark former PIA settlements on the neighbouring Laikipia Plateau (Boles & Lane 2016; Causey 2010) occur here either, even though these features can survive for centuries and even millennia, including in Baringo (Lane 2011; Marshall *et al.* 2018; Petek 2018). This discrepancy might indicate that PIA communities in the Baringo lowlands were more mobile while occupying smaller and less permanent settlements.²

The Little Ice Age’s more humid climate likely contributed to more evenly distributed rainfall and therefore grazing land, as well as allowing rain-fed agriculture as suggested by the increase in the proportions of very large grass pollen of 60–85 μm (considered a possible proxy for crop cultivation) in the available pollen cores between 1500 and 1800 (van der Plas *et al.* 2019, 97). This is mirrored in early twentieth-century developments when the Ilchamus abandoned the villages of Ilchamus Lekeper and Ilchamus Leabori for dispersed and short-lived single-family homesteads (Petek 2018). At that time, several years of reliable rain allowed them to take advantage of rain-fed agriculture and the more widely available pasture. A more humid climate could also hide erratic and extreme weather conditions, as at present when unusually wet years frequently cause floods and landslides (Chepkwony 2019; Koech 2018; Nation Team 2020) (Fig. 3). Moreover, over the second half of the twentieth century, while average rainfall has remained stable, the number of wet days has decreased, indicating that storms are becoming stronger (Kipkorir 2002). Although one could presume that the more humid final centuries of the LIA could have been

advantageous for irrigation agriculture in the lowlands, the lack of archaeological records for longer-term settlements could indicate unsuitable weather conditions or the ability to pursue a mobile, pastoral lifestyle that might have been preferred.

The irrigation system that emerged at the southern end of Lake Baringo is an expression of what Driessen (1995) terms ‘crisis architecture’. It was built as a response to the severe drought in a period of climatic amelioration and expanded over decades, but it also required heavy labour investment into a production system based around a single river in a landscape subject to environmental vagaries. Importantly, its location did not guarantee consistent weather as rain is geographically localized and precipitation is inconsistent. It did, however, equalize weather outcomes across the broader landscape. If the cultivated fields did not receive any rain, it is likely that rains in other areas filled the Perkerra river that was relied on for irrigation, while the neighbouring Tugen community, occupying the more humid highlands, could also be depended on for grains. Although it is unlikely that the entire extent of the irrigation system was under cultivation at the same time, it has been calculated that under ideal conditions (and based on the yields of modern cultivars) the Ilchamus had the capacity to produce over 300 tonnes of surplus grains each year (Petek & Lane 2017). The oral histories certainly record each family having several grain stores,³ and dense concentrations of granaries and houses are evident in the few available photographs taken at the end of the nineteenth century (Petek 2018, figs. 4.5–4.7). This overproduction served as a buffer against multi-year droughts and was used to establish inter-community relationships through exchange and to exchange with passing trade caravans, often on favourable terms. For example, at the time of Count Teleki’s visit in the late 1880s, according to von Höhnel (1894, 5), the inhabitants of the two villages were ‘quite spoiled by the constant and long visits they receive from caravans’ and had become ‘very exacting about what they will take in payment for their wares ... [having] nothing to do with glass beads’. Instead, trade goods had to be used to obtain even ‘the very smallest quantity of grain’ and Ilchamus exchanged ivory only for cattle, while also demanding ‘a considerable tribute’ on top of these payments.

The milder climatic conditions of the nineteenth century contributed to the prosperity and growth of the community, but irrigation agriculture at the time is likely to have been as precarious as it is today. Even the climate of the nineteenth century hides

a)



b)



Figure 3. The site of Ilchamus Lekeper as seen from the central cattle pen in (a) September 2014 and (b) March 2020 (looking northwest). The ground, almost completely barren between 2014 and 2017, has now been densely covered by shrubs and forbs due to increased rainfall in 2019 and 2020. (© Nik Petek-Sargeant.)

significant variability. Ilchamus elders recall stories of people walking to the island of Ol Kokwa at the centre of Lake Baringo, as well as the lake filling up due to intense rains during the Ipeles (c. 1865–1877) and the Ilkileko age sets (1901–1913).⁴ European travellers stopping at Ilchamus settlements in 1883, 1887–88 and 1893 described famines and droughts (Gregory 1896; Thomson 1885; von Höhnel 1894), and sediment records from Lake Bogoria and other nearby lakes indicate drought conditions around 1870 with a short highstand at the start of the twentieth century (De Cort *et al.* 2013; Driese *et al.* 2004; van der Plas *et al.* 2019).

Wakefield and Johnston (1870), on the other hand, report that the Ilchamus villages and the southern Baringo shore were stopping points for large caravans looking to restock, and photographs taken around 1900 show submerged trees in Lakes Baringo and Bogoria, indicative of heightened lake levels (Johnston 1904, 13, 17).

Against this background, the irrigation system at Ilchamus Leabori can be understood not just as an expression of the social, economic and political situation at the time, but also an archive of the weather-world, its possibilities, and how a community reacted to longer-term climatic changes. The lasting effect of the archive imbued in the landscape, the memories passed on to the next generation and even the myth of the Baringo lowlands being a 'granary' are all also apparent in the various colonial efforts from the 1930s to reintroduce large-scale irrigation agriculture after a series of droughts, culminating in the establishment of the Perkerra Irrigation Scheme in 1952 (Anderson 2002, 283). The densely settled late nineteenth-century Ilchamus villages equally tell a story of different weather conditions when compared to the dispersed settlement taking advantage of the more widely available pasture in the early twentieth century, which persisted at least until around the 1980s, as documented in ethno-archaeological studies by Hivernel (1979) and Hodder (1977; 1982).

The Ilchamus, to use Neimanis and Loewen Walker's term, are weather-makers. While they do not alter the meteorological weather, they ascribe meaning to it based on how well they coped and the outcomes of these coping strategies. Rains are deemed good or bad according to the harvest, and droughts are classified based on hardship caused, often talked about in terms of dead livestock. Ilchamus, like other communities that rely on the land for their livelihood, are also acutely aware of changing weather patterns and draw on their observations and experiential knowledge of changes in wind direction, cloud formations and average temperature, alongside biological phenomena (such as the movement of large mammals, birdsong, vegetation changes and the behaviour of bees) to infer climate change (Lenachuru 2016, 93). Droughts and famines that cause significant hardship are named and linked with the warrior age-set of the time, and the affected locations are recalled in oral histories.⁵ The current warrior age-set was renamed *Lmeingati*⁶ partially because increased rainfall caused worse flooding than anybody could remember and the lake depth increased from 1.5 m in the early 2000s to 10.6 m in July 2013 (Degefa *et al.* n.d.).

Whole villages were displaced, people's fields submerged and the southern lake shore moved by approximately 5 km. Yet it is important to recognize that weather events do not necessarily always gain meaning and importance from catastrophic meteorological occurrences or the statistics associated with them. The heavy rains in 1917 caused the Perkerra river to change course, flooding some fields and leaving others without access to water, causing the abandonment of the large irrigation system at Ilchamus Leabori (Anderson 2002, 74). However, this event is given little importance in oral histories as many Ilchamus by then had shifted to a pastoral lifeway and had moved away from the area, even if this particular weather event was the final metaphorical nail in the coffin for their venture into irrigated agriculture.

Ilchamus, like many of the neighbouring communities, have to reinterpret the landscape (almost) annually based on prevailing conditions. Although some locations are more likely to produce the resources they require in abundance, such as grasses for livestock, these can be widely distributed and might require 'following the rains' to pastures in between the arid patches. Over the years and generations, individuals and communities learn to interpret the signs of the weather-world and create an archive which helps them manage the vicissitudes of the climate, which in turn leave more or less permanent archaeological traces.

Conclusion

Using the example of Lake Baringo and the Ilchamus, we have shown how people there 'weathered' climate even under stable conditions, as well as how communities reacted to short-term climatic fluctuations and the associated unpredictable weather. Weather histories here are recorded in personal memories, oral histories, archival and palaeoecological records, as well as archaeology. As discussed, these registers are typically fine-grained and potentially ephemeral leaving elusive material traces—in other contexts, we might imagine such expressions taking the form of re-plastering of house walls, the addition of cladding, changes to the pitch of a roof or even roofing materials, for example, at the level of individual dwellings. Increased frequency of adverse weather might trigger a host of other 'small-scale' changes to daily life, impacting everything from clothing to settlement layout and location. Yet, as the Ilchamus example makes clear, larger collective projects may also be initiated or appear as crisis architecture. Such material interventions cannot

simply be glossed as ‘adaptations’. They are always more than this, informed by bodily understandings of changing conditions and their impacts on individual and collective senses of well-being and place. Moreover, as the Ilchamus’ response to the Great Catastrophe makes clear, rapid climate change triggered by increased intensity of bad weather does not necessarily create the kind of dystopian society often imagined in western literature and film as the inevitable outcome of climate-induced crises, but instead can foster the formation of new communities for whom collaboration was paramount.

Just as climate and nature are historical (including our discourses around them), so is weather, creating historically specific social configurations that organize our interactions and investments in the landscape (Castree & Braun 1998, 5). Archaeology, alongside other environmental humanities, can render an inhabited weather-world visible and histories of climate change can also be histories of weather and *vice versa*. Climate change is ‘not only a mutation of this climate (warming, depleting, becoming more volatile) but an alteration of what we take climate to be’ (Colebrook 2012, 36). Visible and experienced alterations start with the weather, pointing to the different timescales that humans and weather, and society and climate, operate (Cooper 2012; Pillatt 2012).

Unfortunately, to be able to contrast the different timescales, we need multiple datable sources through which higher-resolution responses to change can be reconstructed. This limits archaeologies of weather to areas with well-preserved datasets which have been extensively studied, allowing for comparison between periods and across different land-use systems. While results might only produce a low-resolution image of weathering, the possibility to include generational histories and tightly dated records of activity using varves and/or dendrochronology with a focus on weather events has the potential to generate finer-grained perspectives than climate-centred approaches. Scrutinizing sequences, correlation and causality between climate and societal change (or rupture) is equally essential. This line of questioning, however, needs to be complemented by asking how, why and when (in the then ongoing climate change) societies mediated new or unusual weather or climate manifestations locally (Haldon *et al.* 2018), and how we can elaborate on the materiality of weathering climate change.

Archaeologies of the weather may thus be critical for helping us review how and what communities in the past thought about climate and how the weather is an embedded part of a landscape and society. Moreover, it can change our perspectives of

what the Anthropocene is or should be, how societies perceived their control and impact on the environment, and the social and material expressions of slow emergencies. These novel perspectives should be used to portray and communicate past and present weather imaginaries⁷ and need to be included in discussions of future-making strategies and in policies on adaptation and sustainable development (cf. CHIESA project 2013; Courtney Mustaphi *et al.* 2019). Ultimately, through their foci on the historical and the tangible, archaeologies of weather could also significantly enrich the environmental humanities, act as a bridge between the humanities and sciences, and leverage the discipline’s popularity to communicate and minimize the epistemic distancing of climate change.

Notes

1. E.g. BHT/CH/10, Matayo Lentele, 1 April 1980; BHT/CH/9, Nomoe Lekachuma, 31 March 1980; both interviewed by D. Anderson. (BHT/CH/[number] is the coding used by Anderson to give unique IDs to each interview.)
2. Unstable sedimentary conditions and erosion also contribute to the dearth of archaeological sites; however, the fact that well-established archaeological sites pre- and post-date the PIA further underscores the ephemerality of possible settlements during the PIA.
3. BHT/CH/6, Parmato Lekesio, 6 March 1980; BHT/CH/1, Lekipapui Lekesio, 28 February 1980; both interviewed by D. Anderson.
4. BHT/CH/18, Ngirokwang Lottagule, 8 June 1980; BHT/CH/9, Nomoe Lekachuma, 31 March 1980; BHT/CH/20, Lekaranga Lottagule, 9 June 1980; all interviewed by D. Anderson.
5. E.g. BHT/CH/9, Nomoe Lekachuma, 31 March 1980; BHT/CH/27, Lelepot Lekiroroito, 28 June 1980; BHT/CH/1, Lekipapui Lekesio, 28 February 1980; BHT/CH/10, Matayo Lentele, 1 April 1980; all interviewed by D. Anderson.
6. NPS and Ilchamus colleagues tried to ascertain the full meaning of the age-set name, but were unable to as the name is chosen by a select few elders. The name has close resemblance to the Ilchamus word for ‘enemy’ (*Imangati*).
7. Such as those conveyed in the 2020 British Museum exhibition *Arctic: Culture and climate* (Lincoln *et al.* 2020).

Acknowledgements

Earlier versions of this paper were presented by PL at the Royal Anthropological Institute’s ‘Anthropology, weather and climate change’ conference at the British Museum (May 2016) and at the 23rd Society of Africanist

Archaeologists Biennial Conference, University of Toulouse (June 2016). NPS also presented a parallel paper at the XVIII^e congrès Mondial Union Internationale des Sciences Préhistoriques et Protohistoriques in Paris (June 2018). We would like to thank the conference and session organizers, especially Dr Sandrine Robert, for the opportunity to present at these meetings and our audiences for their comments and constructive feedback. NPS's research on Ilchamus formed the focus of his doctoral research at the Department of Archaeology & Ancient History, Uppsala University, as an Early Stage Researcher on the Marie Curie Skłodowska Innovative Training Networks *Resilience in East African Landscapes* (REAL) project, funded by a grant from the European Commission's 7th Framework Programme (Grant no. 606879) awarded to PL. NPS would also like to thank Prof. David Anderson for sharing his interview transcripts. Additional thanks are due to the two anonymous reviewers and the editor John Robb, for their generous and extraordinarily helpful comments and suggestions on an earlier draft of the paper.

Nik Petek-Sargeant
 Dept of Africa, Oceania and the Americas
 British Museum
 Great Russell Street
 London WC1B 3DG
 UK
 Email: npetek@britishmuseum.org

Paul J. Lane
 Dept of Archaeology
 University of Cambridge
 Downing Street
 Cambridge CB2 3DZ
 UK
 Email: pjl29@cam.ac.uk

References

- Adams, E.C., 1991. *The Origins and Development of the Pueblo Katsina Cult*. Tucson (AZ): University of Arizona Press.
- Adamson, G.D., 2015. Private diaries as information sources in climate research. *WIREs Climate Change* 6, 599–611.
- Anderson, B., K. Grove, L. Rickards & M. Kearnes, 2019. Slow emergencies: temporality and the racialized biopolitics of emergency governance. *Progress in Human Geography* 44(4), 621–39.
- Anderson, D.M., 1989. Agriculture and irrigation technology at Lake Baringo in the nineteenth century. *Azania* 24, 84–97.
- Anderson, D.M., 2002. *Eroding the Commons: The politics of ecology in Baringo, Kenya 1890–1963*. Oxford: James Currey.
- Anderson, D.M., 2016. The beginning of time? Evidence for catastrophic drought in Baringo in the early nineteenth century. *Journal of Eastern African Studies* 10(1), 45–66.
- Anderson, K., 2005. *Predicting the Weather: Victorians and the science of meteorology*. Chicago (IL): Chicago University Press.
- Appadurai, A., 1996. *Modernity at Large: Cultural dimensions of globalization*. Minneapolis (MN): University of Minnesota Press.
- Arike, A., 2006. Owning the weather: the ugly politics of the pathetic fallacy. *Harper's Magazine* January, 67–73.
- Armstrong, C.G., A.C. Shoemaker, I. McKechnie, et al., 2017. Anthropological contributions to historical ecology: 50 questions, infinite prospects. *PLoS ONE* 12(2), e0171883.
- Ashley, G.M., J. Maitima Mworira, A.M. Muasya, et al., 2004. Sedimentation and recent history of a freshwater wetland in a semi-arid environment: Lobo Swamp, Kenya, East Africa. *Sedimentology* 51(6), 1301–21.
- Aukema, J., 1989. Rainmaking: a thousand year-old ritual. *South African Archaeological Bulletin* 44, 70–72.
- Baer, H.A. & M. Singer (eds), 2014. *The Anthropology of Climate Change: An integrated critical perspective*. London: Routledge.
- Bailey, G., 2007. Time perspectives, palimpsests and the archaeology of time. *Journal of Anthropological Archaeology* 26(2), 198–223.
- Barboza, C., 2009. Scientific meteorology and everyday life in Brazil: the Rio-Apa shipwreck, in *Weather, Local Knowledge and Everyday Life: Issues in integrated climate studies*, eds V. Janković & C. Barboza. Rio de Janeiro: MAST, 75–86.
- Barthelme, J., M. LaPann, D. Werbitsky, et al., 1983. Lake Baringo archaeological survey: a preliminary report. *Nyame Akuma* 23(2), 12–13.
- Bessems, I., D. Verschuren, J.M. Russell, J. Hus, F. Mees & B.F. Cumming, 2008. Palaeolimnological evidence for widespread late 18th century drought across equatorial East Africa. *Palaeogeography, Palaeoclimatology, Palaeoecology* 259(2–3), 107–20.
- Boles, O.J.C. & P.J. Lane, 2016. The green, green grass of home: an archaeo-ecological approach to pastoralist settlement in central Kenya. *Azania: Archaeological Research in Africa* 51, 507–30.
- Boles, O.J.C., A. Shoemaker, C.J. Courtney Mustaphi, N. Petek, A. Ekblom & P.J. Lane, 2019. Historical ecologies of pastoralist overgrazing in Kenya: long-term perspectives on cause and effect. *Human Ecology* 47, 419–34.
- Bollig, M., 2016. Adaptive cycles in the savannah: pastoral specialization and diversification in northern Kenya. *Journal of Eastern African Studies* 10(1), 21–44.
- Brace, C. & H. Geoghegan, 2011. Human geographies of climate change: landscape, temporality, and lay knowledges. *Progress in Human Geography* 35(3), 284–302.
- British Broadcasting Corporation, 2019. Who are Extinction Rebellion and what do they want? *BBC Newsround*

- updated 15 October. <https://www.bbc.co.uk/newsround/47991237> (accessed 1 August 2019).
- Brönnimann, S., C. Rohr, P. Stucki, *et al.*, 2018. *1868 – The Flood that Changed Switzerland: Causes, consequences and lessons for the future.* (Geographica Bernensia G94.) Bern: University of Bern, Institute of Geography.
- Castree, N. & B. Braun, 1998. The construction of nature and the nature of construction: analytical and political tools for building survivable futures, in *Remaking Reality: Nature at the millenium*, eds B. Braun & N. Castree. London: Routledge, 2–41.
- Causey, M.J., 2010. New archaeological discoveries from the Laikipia Plateau, Kenya. *Azania: Archaeological Research in Africa* 45(1), 112–36.
- Challis, S., P. Mitchell & J. Orton, 2008. Fishing in the rain: control of rain-making and aquatic resources at a previously undescribed rock art site in highland Lesotho. *Journal of African Archaeology* 6(2), 203–18.
- Chepkwony, J., 2019. Baringo villages submerge despite SH11m project to mitigate floods. *The Standard* 6 December. <https://www.standardmedia.co.ke/article/2001352262/baringo-villages-submerge-despite-sh11m-project-to-mitigate-floods> (accessed 13 July 2020).
- Chiari, S., 2019. Climatic issues in early modern England: Shakespeare’s views of the sky. *WIREs Climate Change* 10(4), e578.
- CHIESA project, 2013. Climate Change Impacts on Ecosystem Services and Food Security in Eastern Africa: Increasing Knowledge, Building Capacity and Developing Adaptation Strategies Land Cover Change Scenarios in the Taita Hills. Policy brief 3. [https://www.york.ac.uk/media/environment/documents/kite/Policy Brief 3.pdf](https://www.york.ac.uk/media/environment/documents/kite/Policy%20Brief%203.pdf)
- CLASP, 2016. *Weathering the Storm.* Liverpool: Liverpool City Council. <https://www.merseysideprepared.org.uk/media/1381/weathering-the-storm-nw-online.pdf>
- Colebrook, C., 2012. A globe of one’s own: in praise of the flat earth. *SubStance* 41(127), 30–39.
- Colson, E., 1948. Rain-shrines of the Plateau Tonga of Northern Rhodesia. *Africa: Journal of the International African Institute* 18(4), 272–83.
- Cooper, J., 2012. Weathering climate change. The value of social memory and ecological knowledge. *Archaeological Dialogues* 19(1), 46.
- Courtney Mustaphi, C.J., C. Capitani, O. Boles, *et al.*, 2019. Integrating evidence of land use and land cover change for land management policy formulation along the Kenya-Tanzania borderlands, *Anthropocene* 28, 100228.
- Crate, S.A. & M. Nuttall, 2016a. Epilogue, in *Anthropology & Climate Change: From encounters to actions*, eds S. A. Crate & M. Nuttall. Abingdon: Routledge, 394–400.
- Crate, S.A. & M. Nuttall (eds), 2016b. *Anthropology & Climate Change: From encounters to actions.* Abingdon: Routledge.
- Crate, S.A. & M. Nuttall, 2016c. Introduction: Anthropology and climate change, in *Anthropology and Climate Change: From encounters to actions*, eds S.A. Crate & M. Nuttall. Abingdon: Routledge, 9–37.
- Crumley, C.L., J. Kolen, M. de Kleijn & N. van Manen, 2017. Studying long-term changes in cultural landscapes: outlines of a research framework and protocol. *Landscape Research* 42(8), 880–90.
- De Cort, G., I. Bessems, E. Keppens, F. Mees, B. Cumming & D. Verschuren, 2013. Late-Holocene and recent hydroclimatic variability in the central Kenya Rift Valley: the sediment record of hypersaline lakes Bogoria, Nakuru and Elementeita. *Palaeogeography, Palaeoclimatology, Palaeoecology* 388, 69–80.
- De Cort, G., D. Verschuren, E. Ryken, *et al.*, 2018. Multi-basin depositional framework for moisture-balance reconstruction during the last 1300 years at Lake Bogoria, Central Kenya Rift Valley. *Sedimentology* 65(5), 1667–96.
- De Vet, E., 2013. Exploring weather-related experiences and practices: examining methodological approaches. *Area* 45(2), 198–206.
- de Wit, S., 2018. Victims or masters of adaptation? How the idea of adaptation to climate change travels up and down to a village in Simanjiro, Maasailand Northern Tanzania. *Sociologus* 68(1), 21–41.
- de Wit, S., A. Pascht & M. Haug, 2018. Translating climate change: anthropology and the travelling idea of climate change – Introduction. *Sociologus* 68(1), 1–20.
- Degefa, A.Z., I. Bessems, R. Tjallingii, B.F. Cumming & D. Verschuren, n.d. *200 Years of Anthropogenic Soil Erosion in the Lake Baringo Catchment*, Kenya: Exploratory evidence from lake sediments, 1–27.
- Demski, C., S. Capstick, N. Pidgeon, R.G. Sposato & A. Spence, 2017. Experience of extreme weather affects climate change mitigation and adaptation responses. *Climatic Change* 140(2), 149–64.
- Department for International Development, 2017. *Agenda 2030: The UK Government’s Approach to Delivering the Global Goals for Sustainable Development – At Home and Around the World.* London: Department for International Development. <http://www.agenda2030.com.br/>
- Dickinson, J.L., 2009. The people paradox: self-esteem striving, immortality ideologies, and human response to climate change. *Ecology and Society* 14(1), 34.
- Dodds, K. & M. Nuttall, 2019. *The Arctic: What everyone needs to know.* Oxford: Oxford University Press.
- Dove, M.R. (ed.), 2014. *The Anthropology of Climate Change: An historical reader.* Chichester: Wiley & Sons.
- Driese, S.G., G.M. Ashley, Z.-H. Li, V.C. Hover & R. B. Owen, 2004. Possible Late Holocene equatorial palaeoclimate record based upon soils spanning the Medieval Warm Period and Little Ice Age, Lobo Plain, Kenya. *Palaeogeography, Palaeoclimatology, Palaeoecology* 213(3–4), 231–50.
- Driessen, J., 1995. ‘Crisis architecture’? Some observations on architectural adaptations as immediate responses to changing socio-cultural conditions. *Topoi* 5(1), 63–88.

- Endfield, G.H. & S. Naylor, 2015. Climate and cultural heritage: an experiment with the 'weather memory bank', in *The Future of Heritage as Climates Change: Loss, adaptation and creativity*, eds D. Harvey & J. Perry. London: Routledge, 62–77.
- Endfield, G.H. & L. Veale (eds), 2018. *Cultural Histories, Memories and Extreme Weather: A historical geography perspective*. Abingdon: Routledge.
- Extinction Rebellion, 2019. Today, 15 July: Extinction Rebellion is causing disruption across 5 UK cities calling on Government to ACT NOW! <https://extinctionrebellion.uk/2019/07/15/today-15-july-extinction-rebellion-is-causing-disruption-across-5-uk-cities-calling-on-government-to-act-now/> (accessed 1 August 2019).
- Fluck, H., 2016. *Climate Change Adaptation Report*. Swindon: Historic England
- García-Herrera, R., D. Barriopedro, D. Gallego, J. Mellado-Cano, D. Wheeler & C. Wilkinson, 2018. Understanding weather and climate of the last 300 years from ships' logbooks. *WIREs Climate Change* 9 (6), e544.
- Golinski, J., 2007. *British Weather and the Climate of Enlightenment*. Chicago (IL): Chicago University Press.
- Greenpeace, 2019. Greenpeace interrupt Chancellor's speech at Mansion House. *Greenpeace* 20 June. <https://www.greenpeace.org.uk/news/greenpeace-interrupt-chancellors-speech-at-mansion-house/> (accessed 29 June 2020).
- Gregory, J.W., 1896. *The Great Rift Valley: Being the narrative of a journey to Mount Kenya and Lake Baringo with some account of the geology, natural history, anthropology and future prospects of British East Africa*. London: J. Murray.
- Gutro, R., 2017. NASA – What's the difference between weather and climate? *NASA* 7 August. https://www.nasa.gov/mission_pages/noaa-n/climate/climate_weather.html (accessed 15 October 2019).
- Haldon, J., L. Mordechai, T.P. Newfield, *et al.*, 2018. History meets palaeoscience: consilience and collaboration in studying past societal responses to environmental change. *PNAS* 115(13), 3210–18.
- Halfman, J.D., T.C. Johnson & B.P. Finney, 1994. New AMS dates, stratigraphic correlations and decadal climatic cycles for the past 4 ka at Lake Turkana, Kenya. *Palaeogeography, Palaeoclimatology, Palaeoecology* 111, 83–9.
- Hall, A. & G.H. Endfield, 2016. 'Snow scenes': exploring the role of memory and place in commemorating extreme winters. *Weather, Climate, and Society* 8(1), 5–19.
- Harris, A., 2015. *Weatherland*. London: Thames & Hudson.
- Hastrup, K., 2009. The nomadic landscape: people in a changing Arctic environment. *Geografisk Tidsskrift-Danish Journal of Geography* 109(2), 181–9.
- Hestres, L.E. & J.E. Hopke, 2017. Internet-enabled activism and climate change, in *Oxford Research Encyclopedia of Climate Science*. Oxford: Oxford University Press. <https://doi.org/10.1093/acrefore/9780190228620.013.404>
- Hivernel, F., 1979. An Ethnoarchaeological Study of Environmental Use in the Kenya Highlands. PhD thesis, University College London.
- Hodder, I., 1977. The distribution of material culture items in the Baringo District, Western Kenya. *Man* 12(2), 239–69.
- Hodder, I., 1982. *Symbols in Action: Ethnoarchaeological studies of material culture*. Cambridge: Cambridge University Press.
- Huffman, T.N., 2009. A cultural proxy for drought: ritual burning in the Iron age of Southern Africa. *Journal of Archaeological Science* 36, 991–1005.
- Hulme, M., 2007. Understanding climate change: the power and the limit of science. *Weather* 62, 243–4.
- Hulme, M., 2008. Geographical work at the boundaries of climate change. *Transactions of the Institute of British Geographers* 33(1), 5–11.
- Hulme, M., 2012. 'Telling a different tale': literary, historical and meteorological readings of a Norfolk heat-wave. *Climatic Change* 113, 5–21.
- Hulme, M., 2015. Climate and its changes: a cultural appraisal. *Geo: Geography and Environment* 2(1), 1–11.
- Iceland, 2018. The Christmas advert that never made it to TV: Iceland's ad launches on social media. *Iceland News*, 9 November. <http://sustainability.iceland.co.uk/news/the-christmas-advert-that-never-made-it-to-tv-icelands-ad-launches-on-social-media/> (accessed 29 June 2020).
- Ingold, T., 2005. The eye of the storm: visual perception and the weather. *Visual Studies* 20(2), 97–104.
- Ingold, T., 2007. Earth, sky, wind, and weather. *Journal of the Royal Anthropological Institute* 13, 19–38.
- Ingold, T., 2008. Bindings against boundaries: entanglements of life in an open world. *Environment and Planning A* 40(8), 1796–1810.
- Ingold, T., 2011. *Being Alive: Essays on movement, knowledge and description*. London: Routledge.
- IPCC, 2014. *Climate Change 2014 Synthesis Report*. Geneva: IPCC.
- Janković, V., 2000. *Reading the Skies: A cultural history of English weather, 1650–1820*. Chicago (IL): Chicago University Press.
- Järpe, A., 2007. 'Ever against the Wind . . .': Lifescapes and Environmental Perception among Sámi Reindeer Herders in Västerbotten, Sweden. PhD thesis, University of Aberdeen.
- Jerstad, H., 2016. *Weathering Relationships: The Intra-Action of People with Climate in Himalayan India*. PhD thesis, University of Edinburgh.
- Johansson, J. & J. Svensson, 2002. *Land Degradation in the Semi-arid Catchment of Lake Baringo, Kenya: A minor field study of physical causes with a socioeconomic aspect*. Göteborg: Göteborgs Universitet.
- Johansson, A.-C., 2018. Expert: Därför ska du välja tåg istället för flyg [Expert: That is why you should

- choose trains over planes]. *Svenska Dagbladet* 16 August. <https://www.svd.se/expert-darfor-bor-du-valja-tag-istallet-for-flyg> (accessed 1 August 2019).
- Johnston, H., 1904. *The Uganda Protectorate, Vol. 1* (2nd edn). London: Hutchinson & Co.
- Kahan, D.M., 2014. Making climate-science communication evidence-based — all the way down, in *Culture, Politics and Climate Change: How information shapes our common future*, eds D.A. Crow & M.T. Boykoff. London: Routledge, 203–20.
- Kendall, A. & D. Drew, 2016. The rehabilitation of Pre-Hispanic agricultural infrastructure to support rural development in the Peruvian Andes, in *The Oxford Handbook of Historical Ecology and Applied Archaeology*, eds C. Isendahl & D. Stump. Oxford: Oxford University Press. DOI: 10.1093/oxfordhb/9780199672691.013.24
- Kiage, L.M. & K. Liu, 2009. Palynological evidence of climate change and land degradation in the Lake Baringo area, Kenya, East Africa, since AD 1650. *Palaeogeography, Palaeoclimatology, Palaeoecology* 279 (1–2), 60–72.
- Kinahan, J., 1999. Towards an archaeology of mimesis and rainmaking in the rock art of Namibia, in *The Archaeology and Anthropology of Landscape*, eds P. Ucko & R. Layton. London: Routledge, 336–57.
- Kintigh, K.W., J.H. Altschul, M.C. Beaudry, *et al.*, 2014. Grand challenges for archaeology. *PNAS* 111(3), 879–80.
- Kipkorir, E., 2002. Analysis of rainfall climate on the Njemps Flats, Baringo District, Kenya. *Journal of Arid Environments* 50(3), 445–58.
- Koech, F., 2018. Fears of flooding as water levels in Baringo lakes rise. *Daily Nation* 20 August. <https://www.nation.co.ke/kenya/counties/baringo/fears-of-flooding-as-water-levels-in-baringo-lakes-rise-79338> (accessed 13 July 2020).
- Lamphear, J.E., 1972. The Traditional History of the Jie in Uganda. PhD thesis. University of London.
- Lane, P.J., 2011. An outline of the Later Holocene archaeology and precolonial history of the Ewaso Basin, Kenya. *Smithsonian Contributions to Zoology* 632 (May), 11–30.
- Lane, P.J., 2015. Archaeology in the age of the Anthropocene: a critical assessment of its scope and societal contributions. *Journal of Field Archaeology* 40 (5), 485–98.
- Lenachuru, C.I., 2016. Ilchamus Pastoralists' Indigenous Knowledge and its Use in Coping with and Adapting to Climate Change in Marigat, Kenya. PhD thesis, Colorado State University.
- Lincoln, A., J. Cooper & J.P.L. Loovers (eds), 2020. *Arctic: Culture and climate*. London: Thames & Hudson.
- Logan, A.L., 2020. *The Scarcity Slot: Excavating histories of food security in Ghana*. Berkeley (CA): University of California Press
- Malm, A., 2016. *Fossil Capital: The rise of steam power and the roots of global warming*. London: Verso.
- Marchant, R., S. Richer, O.J.C. Boles, *et al.*, 2018. Drivers and trajectories of land cover change in East Africa: human and environmental interactions from 6000 years ago to present. *Earth-Science Reviews* 178, 322–78.
- Markham, A., E. Osipova, K. Lafrenz Samuels & A. Caldas, 2016. *World Heritage and Tourism in a Changing Climate*. Paris/Nairobi: United Nations Environmental Programme & UNESCO.
- Marris, E., 2020. Why we'll succeed in saving the planet from climate change. *National Geographic Magazine* April. <https://www.nationalgeographic.com/magazine/2020/04/why-we-will-succeed-in-saving-the-planet-from-climate-change-feature/> (accessed 29 June 2020).
- Marshall, F.B., R.E.B. Reid, S.T. Goldstein, *et al.*, 2018. Ancient herders enriched and restructured African grasslands. *Nature* 561(7723), 387–93.
- McGray, H., A. Hammill, R. Bradley, E.L. Schipper & J.-E. Parry, 2007. *Weathering the Storm: Options for framing adaptation and development*. Washington (DC): World Resources Institute.
- McKibben, B., 1989. *The End of Nature*. New York (NY): Random House.
- Merrick, H.V., 1982. *Baringo Field Survey Notes, KNM 3590 3603*. Nairobi: National Museums of Kenya Site Inventory.
- Moser, S.C., 2016. Reflections on climate change communication research and practice in the second decade of the 21st century: what more is there to say? *WIREs Climate Change* 7, 345–69.
- Murimbika, M.T., 2006. Sacred Powers and Rituals of Transformation: An Ethnoarchaeological Study of Rainmaking Rituals and Agricultural Productivity during the Evolution of the Mapungubwe State, AD 1000 To AD 1300. PhD thesis, University of the Witwatersrand.
- Nakashima, D.J., K. Galloway McLean, H.D. Thulstrup, A. Ramos Castillo & J.T. Rubis, 2012. *Weathering Uncertainty: Traditional knowledge for climate change assessment and adaptation*. Paris/Darwin: UNESCO/UNU.
- Nash, D.J. & G.H. Endfield, 2002. A 19th century climate chronology for the Kalahari region of central southern Africa derived from missionary correspondence. *International Journal of Climatology* 22, 821–41.
- Nash, D.J., K. Pribyl, J. Klein, G.H. Endfield, D.R. Kniveton & G.C.D. Adamson, 2015. Tropical cyclone activity over Madagascar during the late nineteenth century. *International Journal of Climatology* 35, 3249–61.
- Nation Team, 2020. Declare floods national disaster, leaders say. *Daily Nation* 13 May. <https://www.nation.co.ke/kenya/news/declare-floods-national-disaster-leaders-say-289138> (accessed 15 May 2020).
- Neimanis, A., C. Åsberg & J. Hedrén, 2015. Four problems, four directions for environmental humanities: toward critical posthumanities for the Anthropocene. *Ethics & the Environment* 20(1), 67–97.
- Neimanis, A. & J.M. Hamilton, 2018. Open space weathering. *Feminist Review* 118(1), 80–84.

- Neimanis, A. & R. Loewen Walker, 2014. Weathering: climate change and the 'thick time' of transcorporeality. *Hypatia* 29(3), 558–75.
- Nelson, M.C., K. Kintigh, D.R. Abbott & J.M. Anderies, 2010. The cross-scale interplay between social and biophysical context and the vulnerability of irrigation-dependent societies: archaeology's long-term perspective. *Ecology and Society* 15(3), 31.
- Ochieng, A., 2019. Tribunal cancels Lamu coal power project licence. *Daily Nation* 26 June. <https://www.nation.co.ke/kenya/news/tribunal-cancels-lamu-coal-power-project-licence-180580> (accessed 1 August 2019).
- Offen, K., 2014. Historical geography III: climate matters. *Progress in Human Geography* 38(3), 476–89.
- Orlove, B., C. Roncoli, M. Kabugo & A. Majugu, 2010. Indigenous climate knowledge in southern Uganda: the multiple components of a dynamic regional system. *Climatic Change* 100, 243–65.
- Parker, G., 2013. *Global Crisis: War, climate change and catastrophe in the seventeenth century*. New Haven (CT): Yale University Press.
- Pas, A., 2018. Governing grazing and mobility in the Samburu lowlands, Kenya. *Land* 7(2), 41.
- Pearce, W., R. Grundmann, M. Hulme, S. Raman, E. Hadley Kershaw & J. Tsouvalis, 2017. Beyond counting climate consensus. *Environmental Communication* 11(6), 723–30.
- Petek, N., 2018. *Archaeological Perspectives on Risk and Community Resilience in the Baringo Lowlands, Kenya*. (Studies in Global Archaeology 24.) Uppsala: Department of Archaeology and Ancient History, Uppsala University.
- Petek, N. & P.J. Lane, 2017. Ethnogenesis and surplus food production: communitas and identity building among nineteenth- and early twentieth-century Ilchamus, Lake Baringo, Kenya. *World Archaeology* 49(1), 40–60.
- Pillatt, T., 2012. From climate and society to weather and landscape. *Archaeological Dialogues* 19(1), 29–42.
- Pillatt, T., 2016. Life in the weather-world: examining an eighteenth-century 'ecological perspective'. *World Archaeology* 48(4), 586–602.
- Plieninger, T., T. Kizos, C. Bieling, et al., 2015. Exploring ecosystem-change and society through a landscape lens: recent progress in European landscape research. *Ecology and Society* 20(2), 5.
- Price, N. & B. Gräslund, 2015. Excavating the Fimbulwinter? Archaeology, geomorphology and the climate event(s) of AD 536, in *Past Vulnerability: Volcanic eruptions and human vulnerability in traditional societies past and present*, ed. F. Riede. Aarhus: Aarhus University Press, 109–32.
- Prins, F.E., 1990. Southern Bushmen descendants in the Transkei: rock art and rainmaking. *South African Journal of Ethnology* 13(3), 110–16.
- Radeny, M., A. Desalegn, D. Mubiru, et al., 2019. Indigenous knowledge for seasonal weather and climate forecasting across East Africa. *Climatic Change* 156, 509–26.
- Rayner, S., 2009. Weather and climate in everyday life: social science perspectives, in *Weather, Local Knowledge and Everyday Life: Issues in integrated climate studies*, eds V. Janković & C. Barboza. Rio de Janeiro: MAST, 19–36.
- Readfern, G., 2020. Scientists trial cloud brightening equipment to shade and cool Great Barrier Reef. *The Guardian* 16 April. <https://www.theguardian.com/environment/2020/apr/17/scientists-trial-cloud-brightening-equipment-to-shade-and-cool-great-barrier-reef> (accessed 28 April 2020).
- Reichenmiller, P., A. Spiegel, D. Bresch & R. Schnarwile, 2010. *Weathering Climate Change: Insurance solutions for more resilient communities*. Zürich: Swiss Re.
- Republic of Kenya, 1984. *Baringo Pilot Semi Arid Area Project*. Nairobi: Ministry of Agriculture.
- Riede, F., 2018. Deep pasts – deep futures: a palaeoenvironmental humanities perspective from the Stone Age to the human age, *Current Swedish Archaeology* 26, 11–28.
- Rockman, M., 2012. The necessary roles of archaeology in climate change mitigation and adaptation, in *Archaeology in Society: Its relevance in the modern world*, eds M. Rockman & J. Flatman. London: Springer, 193–216.
- Roddick, A.P., 2018. The palaeoenvironmental humanities: climate narratives, public scholarship, and deep futures. *Current Swedish Archaeology* 26, 79–85.
- Rohr, C., 2009. Confronting avalanches in the Alps in the late Middle Ages and early Modern Era, in *Weather, Local Knowledge and Everyday Life: Issues in integrated climate studies*, eds V. Janković & C. Barboza. Rio de Janeiro: MAST, 67–74.
- Rooney, T., 2018. Weather worlding: learning with the elements in early childhood. *Environmental Education Research* 24(1), 1–12.
- Rooney, T., 2019. Weathering time: walking with young children in a changing climate. *Children's Geographies* 17(2), 177–89.
- Rowntree, K.M., 1989. Rainfall characteristics, rainfall reliability and the definition of drought: Baringo District, Kenya. *South African Geographical Journal* 71(2), 74–80.
- Sanders, T., 2014. The making and unmaking of rains and reigns, in *The Anthropology of Climate Change: An historical reader*, ed. M.R. Dove. Chichester: Wiley Blackwell, 276–99.
- Saner, E., 2019. Could you give up flying? Meet the no-plane pioneers. *The Guardian* 22 May. <https://www.theguardian.com/travel/2019/may/22/could-you-give-up-flying-meet-the-no-plane-pioneers> (accessed 1 Aug 2019).
- Savo, V., D. Lepofsky, J.P. Benner, K.E. Kohfeld, J. Bailey & K. Lertzman, 2016. Observations of climate change among subsistence-oriented communities around the world. *Nature Climate Change* 6, 462–73.

- Schoeman, M.H., 2006. Imagining rain-places: rain-control and changing ritual landscapes in the Shashe-Limpopo Confluence Area, South Africa. *South African Archaeological Bulletin* 61, 152–65.
- Schoeman, M.H. 2009. Excavating the ‘waterpits in the mountain’: the archaeology of Shashe-Limpopo Confluence Area rain-hill rock tanks. *Southern African Humanities* 21, 275–98.
- Sherratt, T., T. Griffiths & L. Robin (eds), 2005. *A Change in the Weather: Climate and culture in Australia*. Canberra: National Museum of Australia Press.
- Shoemaker, A., 2018. *Pastoral Pasts in the Amboseli Landscape: An archaeological exploration of the Amboseli ecosystem from the Later Holocene to the Colonial period*. (Studies in Global Archaeology 25.) Uppsala: Department of Archaeology and Ancient History, Uppsala University.
- Simpson, Jr., G.L. & P. Waweru, 2012. Becoming Samburu: the ethnogenesis of a pastoral people in nineteenth-century northern Kenya. *Journal of the Middle East and Africa* 3(2), 175–97.
- Slocum, R., 2004. Polar bears and energy-efficient light-bulbs: strategies to bring climate change home. *Environment and Planning D: Society and Space* 22(3), 413–38.
- Solway, J.S., 1994. Drought as a ‘revelatory crisis’: an exploration of shifting entitlements and hierarchies in the Kalahari, Botswana. *Development and Change* 25, 471–95.
- Šooš, T., K. Lautar, H. Urbančič, N. Kobe Logonder, R. Kmet Zupančič & L. Fajčič, 2017. Strategija razvoja Slovenije 2030 [Strategy for the Development of Slovenia]. Ljubljana: Služba Vlade Republike Slovenije za razvoj in evropsko kohezijsko politiko. http://www.svrk.gov.si/fileadmin/svrk.gov.si/pageuploads/Osnutek_SRS2030_-_javno_posvetovanje.pdf
- Spriggs, M., 2015. A 1980 attempt at reviving ancient irrigation practices in the Pacific: rationale, failure, and success, in *Oxford Handbook of Historical Ecology and Applied Archaeology*, eds C. Isendahl & D. Stump. Oxford: Oxford University Press. DOI: 10.1093/oxfordhb/9780199672691.013.25
- Springmann, M., M. Clark, D. Mason-D’Croz, et al., 2018. Options for keeping the food system within environmental limits. *Nature* 562(7728), 519–25.
- Stager, J.C., D. Ryves, B.F. Cumming, L. Meeke & J. Beer, 2005. Solar variability and the levels of Lake Victoria, East Africa, during the last millennium. *Journal of Paleolimnology* 33(2), 243–51.
- Strauss, S. & B.S. Orlove (eds), 2003. *Weather, Climate, Culture*. London: Berg.
- Sutherland, R.A., R.B. Bryan & D. Oostwoud Wijendes, 1991. Analysis of the monthly and annual rainfall climate in a semi-arid environment, Kenya. *Journal of Arid Environments* 20(3), 257–75.
- Szabó, P., 2015. Historical ecology: past, present and future, *Biological Reviews* 90(4), 997–1014.
- Thomson, J., 1885. *Through Masai Land: A journey of exploration among the snowclad volcanic mountains and strange tribes of Eastern Equatorial Africa*. London: Sampson, Low, Marston, Searle & Rivington.
- Tiki, W., G. Oba & T. Tvedt, 2013. An indigenous time-related framework for reconstructing the impact of disasters on ancient water systems in southern Ethiopia, 1560–1950. *Journal of Historical Geography* 41, 33–43.
- Turner, N.J. & H. Clifton, 2009. ‘It’s so different today’: climate change and indigenous lifeways in British Columbia, Canada. *Global Environmental Change* 19, 180–90.
- Turner, V.W., 1969. *The Ritual Process: Structure and anti-structure*. Ithaca (NY): Cornell University Press.
- Tyler, L., 2017. ‘How the weather was’: anthropogenic climate change and environmental damage in Hemingway’s *Green Hills of Africa*. *Hemingway Review* 37(1), 36–54.
- Van de Noort, R., 2013. *Climate Change Archaeology: Building resilience from research in the world’s coastal wetlands*. Oxford: Oxford University Press.
- van der Plas, G.W., G. De Cort, N. Petek-Sargeant, T. Wuytack, D. Colombaroli, P.J. Lane & D. Verschuren, 2019. Distinct phases of natural landscape dynamics and intensifying human activity in the central Kenya Rift Valley during the past 1300 years. *Quaternary Science Reviews* 218, 91–106.
- Vanek, M., 2018. Where the weather comes from. *The Goose* 17(1), Art. 46.
- Vehrs, H.-P., 2016. Changes in landscape vegetation, forage plant composition and herding structure in the pastoralist livelihoods of East Pokot, Kenya. *Journal of Eastern African Studies* 10(1), 88–110.
- Verschuren, D., K.R. Laird & B.F. Cumming, 2000. Rainfall and drought in equatorial east Africa during the past 1,100 years. *Nature* 403(6768), 410–14.
- von Höhnel, L., 1894. *Discovery of Lakes Rudolf and Stephanie: A narrative of Count Samuel Teleki’s exploring and hunting expeditions in Eastern Equatorial Africa in 1887 and 1888. Vol 2*. London: Longmans, Green & Co.
- Waites, I., 2018. Learning to say ‘Phew’ instead of ‘Brrr’: social and cultural change during the British summer of 1976, in *Cultural Histories, Memories and Extreme Weather: A historical geography perspective*, eds G. H. Endfield & L. Veale. Abingdon: Routledge, 16–33.
- Wakefield, T. & K.J. Johnston, 1870. Routes of native caravans from the coast to the interior of Eastern Africa, chiefly from information given by Sadi Bin Ahedi, a native of a district near Gazi, in Udigo, a little north of Zanzibar. *Journal of the Royal Geographical Society of London* 40, 303–39.
- Webster, J.B., 1980. Drought, migration and chronology in the Lake Malawi littoral. *Transafrican Journal of History* 9(1/2), 70–90.
- Wheeler, D. & R. García-Herrera, 2008. Ships’ logbooks in climatological research reflections and prospects. *Trends and Directions in Climate Research* 1146, 1–15.

- Wikipedia, n.d. Environmental vegetarianism. *Wikipedia, the free encyclopedia*. https://en.wikipedia.org/wiki/Environmental_vegetarianism?oldformat=true (accessed 29 June 2020).
- Wright, D.K., S.L. Forman, P. Kiura, C. Bloszies & A. Beyin, 2015. Lakeside view: sociocultural responses to changing water levels of Lake Turkana, Kenya. *African Archaeological Review* 32, 335–67.
- Yates, G., V. McNeice, R. Jones, R. Wolstenholme, F. Barrett & D. Irving, 2018. *Weathering Change: Community resilience in the face of climate change*. Glasgow: Glasgow Centre for Population Health. https://www.gcph.co.uk/assets/0000/6599/Weathering_Change_FINAL.pdf
- Zand, B. & D. Fawbert, 2019. 'My six months with Extinction Rebellion'. British Broadcasting Corporation. <https://www.bbc.co.uk/bbcthree/article/66227e29-405e-44c1-bd6c-5ac33308cca0> (accessed 1 August 2019).

Author biographies

Nik Petek-Sargeant is Project Curator for the Endangered Material Knowledge Programme at the British Museum facilitating documentation of endangered crafts and practices. He has been working in Baringo County, Kenya, since 2014, and is interested in historical archaeology, historical ecology and the archaeology of pastoralism.

Paul Lane is Jennifer Ward Oppenheimer Professor of Deep History & Archaeology of Africa at the Department of Archaeology, University of Cambridge. He was previously Professor of Global Archaeology at Uppsala University, and is a historically and anthropologically oriented archaeologist specializing in the later Holocene of sub-Saharan Africa.