



Year: 2021

Edoxaban for stroke prevention in atrial fibrillation in routine clinical care: One year follow up of the prospective observational ETNA-AF-Europe study

de Groot, Joris R ; Weiss, Thomas W ; Kelly, Peter ; Monteiro, Pedro ; Deharo, Jean Claude ; de Asmundis, Carlo ; López-de-Sá, Esteban ; Waltenberger, Johannes ; Steffel, Jan ; Levy, Pierre ; Bakhai, Ameet ; Zierhut, Wolfgang ; Laeis, Petra ; Manu, Marius Constantin ; Reimitz, Paul-Egbert ; De Caterina, Raffaele ; Kirchhof, Paulus

Abstract: AIM Non-vitamin K oral anticoagulants (NOACs) are safe and effective for stroke prevention in patients with atrial fibrillation (AF). Data on the safety and efficacy of edoxaban in routine care are limited in Europe. We report one-year outcomes in patients with AF treated with edoxaban in routine care. **METHODS AND RESULTS** ETNA-AF-Europe is a prospective, multi-centre, post-authorisation, observational study enrolling patients treated with edoxaban in 10 European countries, the design of which was agreed with the European Medicines Agency as part of edoxaban's post-approval safety plan. Altogether 13,092 patients in 852 sites completed the one-year follow-up (mean age: 73.6 ± 9.5 years; 57% male, mean follow-up: 352 ± 49 days [median: 366 days]). Most patients had associated comorbidities (mean CHA₂DS₂-VASc score: 3.1 ± 1.4). Stroke or systemic embolism was reported in 103 patients (annualised event rate: 0.82%/year), and major bleeding events was reported in 132 patients (1.05%/year). Rates of intracranial haemorrhage were low (30 patients [0.24%/year]). Death occurred in 442 patients (3.50%/year); cardiovascular death occurred in 206 patients (1.63%/year). The approved dosing of edoxaban was chosen in 83%. All-cause and cardiovascular mortality were higher in patients receiving edoxaban 30 mg versus 60 mg, in line with the higher age and more frequent comorbidities of the 30 mg group. Major bleeding was also numerically more common in patients receiving edoxaban 30 mg versus 60 mg. **CONCLUSION** The rates of stroke, systemic embolism and major bleeding are low in this large unselected cohort of high-risk AF patients routinely treated with edoxaban.

DOI: <https://doi.org/10.1093/ehjcvp/pvaa079>

Posted at the Zurich Open Repository and Archive, University of Zurich

ZORA URL: <https://doi.org/10.5167/uzh-198576>

Journal Article

Published Version



The following work is licensed under a Creative Commons: Attribution-NonCommercial 4.0 International (CC BY-NC 4.0) License.

Originally published at:

de Groot, Joris R; Weiss, Thomas W; Kelly, Peter; Monteiro, Pedro; Deharo, Jean Claude; de Asmundis, Carlo; López-de-Sá, Esteban; Waltenberger, Johannes; Steffel, Jan; Levy, Pierre; Bakhai, Ameet; Zierhut,

Wolfgang; Laeis, Petra; Manu, Marius Constantin; Reimitz, Paul-Egbert; De Caterina, Raffaele; Kirchhof, Paulus (2021). Edoxaban for stroke prevention in atrial fibrillation in routine clinical care: One year follow up of the prospective observational ETNA-AF-Europe study. *European Heart Journal - Cardiovascular Pharmacotherapy*, 7(FI1):f30-f39.
DOI: <https://doi.org/10.1093/ehjcvp/pvaa079>

Edoxaban for stroke prevention in atrial fibrillation in routine clinical care: 1-year follow-up of the prospective observational ETNA-AF-Europe study

Joris R. de Groot¹, Thomas W. Weiss², Peter Kelly³, Pedro Monteiro⁴, Jean Claude Deharo⁵, Carlo de Asmundis⁶, Esteban López-de-Sá⁷, Johannes Waltenberger ^{8,9}, Jan Steffel¹⁰, Pierre Levy¹¹, Ameet Bakhai¹², Wolfgang Zierhut¹³, Petra Laeis¹³, Marius Constantin Manu¹³, Paul-Egbert Reimitz ¹³, Raffaele De Caterina¹⁴, and Paulus Kirchhof ^{15,16,17*}
on behalf of the ETNA-AF-Europe investigators

¹Department of Cardiology, Amsterdam University Medical Centres/University of Amsterdam, Spui 21 1012 WX Amsterdam, The Netherlands; ²Institute for Cardiometabolic Diseases, Karl Landsteiner Society, St. Pölten, Austria; ³Department of Neurology, HRB Stroke Clinical Trials Network Ireland, University College Dublin/Mater Misericordiae University Hospital, Eccles St, Northside, Dublin, Ireland; ⁴Department of Cardiology, Centro Hospitalar e Universitário de Coimbra, Praceta Mota Pinto 3000-075, Coimbra, Portugal; ⁵AP-HM, Aix Marseille University, Hôpital Timone, Cardiologie, Rythmologie, 264 rue Saint-Pierre, 13005, Marseille, France; ⁶Department of Cardiology, Universitair Ziekenhuis Brussels, Ninoofsesteenweg 134, 1700 Dilbeek, Belgium; ⁷Cardiological Intensive Care Unit, Cardiology Service, Hospital Universitario La Paz, IDIPAZ, CIBER-CV, Madrid, Spain; ⁸Department of Cardiovascular Medicine, University of Munster, Schlossplatz 2, 48149 Munster, Germany; ⁹Department of Internal Medicine I, SRH Central Hospital Suhl, Albert-Schweitzer-Straße 2, 98527 Suhl, Germany; ¹⁰Department of Cardiology, University Hospital of Zurich, Rämistrasse 100, 8091 Zurich, Switzerland; ¹¹Department of Economics, Université Paris-Dauphine, PSL Research University, LEDa-LEGOS, Paris, France; ¹²Department of Cardiology, Royal Free London NHS Foundation Trust, Pond Street, London NW3 2QG, UK; ¹³Daiichi Sankyo Europe GmbH, Zielstattstr. 48, 81379 Munich, Germany; ¹⁴Chair of Cardiology, University of Pisa, Lungarno Antonio Pacinotti, 43, 56126 Pisa, Italy; ¹⁵Institute of Cardiovascular Sciences, University of Birmingham, SWBH and UHB NHS Trusts, IBR 136, Wolfson Drive, Birmingham B15 2TT, UK; ¹⁶Department of Cardiology, University Heart and Vascular Centre Hamburg, Villa Garbrecht, Martinistraße 52, 20251 Hamburg, Germany; and ¹⁷The Atrial Fibrillation NETWORK (AFNET), Münster, Germany

Received 9 March 2020; revised 28 May 2020; editorial decision 24 June 2020; accepted 5 August 2020

Aims

Non-vitamin K oral anticoagulants are safe and effective for stroke prevention in patients with atrial fibrillation (AF). Data on the safety and efficacy of edoxaban in routine care are limited in Europe. We report 1-year outcomes in patients with AF treated with edoxaban in routine care.

Methods and results

ETNA-AF-Europe is a prospective, multicentre, post-authorization, observational study enrolling patients treated with edoxaban in 10 European countries, the design of which was agreed with the European Medicines Agency as part of edoxaban's post-approval safety plan. Altogether 13 092 patients in 852 sites completed the 1-year follow-up [mean age: 73.6 ± 9.5 years; 57% male, mean follow-up: 352 ± 49 days (median: 366 days)]. Most patients had associated comorbidities (mean CHA₂DS₂-VASc score: 3.1 ± 1.4). Stroke or systemic embolism was reported in 103 patients (annualized event rate: 0.82%/year), and major bleeding events were reported in 132 patients (1.05%/year). Rates of intracranial haemorrhage were low [30 patients (0.24%/year)]. Death occurred in 442 patients (3.50%/year); cardiovascular (CV) death occurred in 206 patients (1.63%/year). The approved dosing of edoxaban was chosen in 83%. All-cause and CV mortality were higher in patients receiving edoxaban 30 mg vs. 60 mg, in line with the higher age and more frequent comorbidities of the 30 mg group. Major bleeding was also numerically more common in patients receiving edoxaban 30 mg vs. 60 mg.

* Corresponding author. Tel: +49 40 7410 54238, Email: p.kirchhof@bham.ac.uk

© The Author(s) 2020. Published by Oxford University Press on behalf of the European Society of Cardiology.

This is an Open Access article distributed under the terms of the Creative Commons Attribution Non-Commercial License (<http://creativecommons.org/licenses/by-nc/4.0/>), which permits non-commercial re-use, distribution, and reproduction in any medium, provided the original work is properly cited. For commercial re-use, please contact journals.permissions@oup.com

Conclusion

The rates of stroke, systemic embolism, and major bleeding are low in this large unselected cohort of high-risk AF patients routinely treated with edoxaban.

Keywords

Non-vitamin K oral anticoagulant • Edoxaban • Real-world • Registry • Atrial fibrillation

Introduction

Atrial fibrillation (AF) is a growing epidemic, currently affecting 1.5–3% of European populations.^{1,2} Oral anticoagulation is key for reducing the risk of stroke in patients with AF. Non-vitamin K antagonist oral anticoagulants (NOACs) are at least as effective as vitamin K antagonists (VKAs) in controlled clinical trials, with a lower risk of intracranial haemorrhage (ICH) and overall a lower mortality than VKAs.³ Non-vitamin K oral anticoagulant use in clinical practice is increasingly becoming the standard of care. Several registries^{4–6} and retrospective analyses^{7,8} have assessed outcomes of three (apixaban, dabigatran, and rivaroxaban) of the four available NOACs, but routine clinical data on edoxaban, the fourth NOAC that entered the clinical arena, are scarce. Regulators such as the European Medicines Agency have regularly requested for data on the safety of recently approved therapies in routine clinical care as part of the post-approval safety plan of these recently approved medications.

Edoxaban, a once daily, direct factor Xa inhibitor, is approved for stroke prevention in adult patients with AF, as well as for the treatment and secondary prevention of venous thromboembolism. The recommended dose for all indications is 60 mg edoxaban once daily with a reduced dose of 30 mg once daily in patients with one or more of the following clinical factors: moderate or severe renal impairment [creatinine clearance (CrCl) 15–50 mL/min], low body weight ≤ 60 kg, or concomitant use of certain P-glycoprotein (P-gp) inhibitors.⁹ Edoxaban was shown to be effective and safe in a wide range of patient populations included in the randomized ENGAGE AF-TIMI 48 trial.^{10–12} However, data on its effectiveness and safety in routine clinical care is still limited in the European population.

Here, we present the 1-year outcomes of stroke, bleeding, and mortality from the Edoxaban Treatment in Routine Clinical Practice for Patients With Non Valvular Atrial Fibrillation (ETNA-AF-Europe) study conducted in unselected European patients with AF.

Methods

ETNA-AF-Europe (Clinicaltrials.gov: NCT02944019) is a multinational, multicentre, post-authorization, observational study conducted in 852 sites in 10 European countries (Austria, Belgium, Germany, Ireland, Italy, The Netherlands, Portugal, Spain, Switzerland, and UK). ETNA-AF-Europe is part of the global ETNA initiative, which is composed of separate, non-interventional prospective ETNA-AF registries in Europe, East Asia, and Japan. The design of the ETNA-AF-Europe was agreed in close collaboration with the European Medicines Agency (EMA) and has been previously published.^{13,14} The study was approved by the institutional review boards and independent Ethics Committees for all participating centres in compliance with the Declaration of Helsinki and Guidelines for Good Pharmacoepidemiological Practice (GPP). All participants provided written informed consent.

Unselected routine patients with AF treated with edoxaban, providing consent, were prospectively enrolled. Explicit exclusion criteria were not defined. The primary objective of ETNA-AF-Europe is to assess the routine clinical care safety of edoxaban by evaluating bleeding events, including ICH; drug-related adverse events; and cardiovascular (CV) and all-cause mortality in routine care patients with AF treated with edoxaban up to 4 years, with regard to onset (relative to treatment with edoxaban), duration, severity and outcomes of the events. Details of the inclusion criteria and secondary objectives can be found in the ETNA-AF-Europe design paper.¹³ Here, we present 1-year follow-up outcomes of the first 13 092 patients as captured on 31 October 2019.

Besides description of patients' characteristics and outcomes, event rates are compared descriptively with event rates reported amongst non-Asian patients included in the Effective Anticoagulation with Factor Xa Next Generation in Atrial Fibrillation-Thrombolysis in Myocardial Infarction 48 (ENGAGE AF-TIMI 48) study. In ETNA-AF-Europe, all patients were included, including a minority of Asians living in Europe. From ENGAGE AF-TIMI 48, 'non-Asian' self-designated patients were used to contextualize against ETNA-AF-Europe data, in view of a sub-analysis that has confirmed a preferential efficacy with edoxaban in Asian vs. non-Asian patients.¹⁵ Therefore, the side-by-side presentation of ETNA-AF-Europe and ENGAGE AF-TIMI 48 in this paper is intended to be a conservative exercise.

Statistical analysis

Baseline characteristics are summarized descriptively as frequencies (n and percentage), mean value \pm standard deviation (SD) rounded to integer, or median [interquartile range (IQR)]. Based on the reported events, annualized event rates (% per year) are presented for the main safety and efficacy outcomes. Other outcomes were specified in the design paper.¹³ The events presented here for ETNA-AF-Europe are as reported by the site investigator.

Kaplan–Meier curves were used to present the cumulative event rates of stroke/systemic embolism (SE), major bleeding, and all-cause mortality.

A stepwise logistic regression model was used to identify the factors related to all-cause mortality and major bleeding.

Results

Baseline characteristics

Baseline characteristics of ETNA-AF-Europe patients completing follow-up ($N = 13\,092$) were broadly similar to the non-Asian ethnicity cohort of ENGAGE AF-TIMI 48. Mean age was slightly higher in ETNA-AF-Europe with more than half of all patients aged ≥ 75 years, whereas the CHA₂DS₂-VASc score was slightly lower and the HAS-BLED bleeding risk score was slightly higher in patients included in ETNA-AF-Europe compared with the non-Asian ENGAGE AF-TIMI 48 population (Table 1), reflecting the broader indications for edoxaban compared with the inclusion criteria of ENGAGE AF-TIMI 48.

In ETNA-AF-Europe, the mean body weight was 81 ± 17 kg and body mass index (BMI) was 28 ± 5 kg/m². The mean (\pm SD) and median follow-up duration was 352 ± 49 and 366 days. AF at first

Table 1 Baseline demographics and clinical characteristics of patients included in ETNA-AF-Europe and ENGAGE AF-TIMI 48

| | ETNA-AF-Europe | | | ENGAGE AF-TIMI 48 (non-Asian cohort) | | |
|--|----------------|---------------------|---------------------|--------------------------------------|---------------------|-----------------------------|
| | Total | Edoxaban 60 mg o.d. | Edoxaban 30 mg o.d. | Total | Edoxaban 60 mg o.d. | Edoxaban dose adj. to 30 mg |
| Patients, n (%) | 13092 (100%) | 9991 (76.3%) | 3101 (23.7%) | 6056 (100%) | 4747 (78.4%) | 1309 (21.6%) |
| Male, n (%) | 7430 (56.8%) | 6061 (60.7%) | 1369 (44.1%) | 3696 (61.0%) | 3160 (66.6%) | 536 (40.9%) |
| Age (years), mean ± SD | 73.6 ± 9.46 | 71.8 ± 9.14 | 79.5 ± 7.92 | 70.9 ± 9.41 | 69.2 ± 9.17 | 77.1 ± 7.47 |
| By age sub-groups, n (%) | | | | | | |
| <65 years | 1994 (15.2%) | 1861 (18.6%) | 133 (4.3%) | 1544 (29.5%) | 1445 (30.4%) | 99 (7.6%) |
| 65–74 years | 4456 (34.0%) | 3896 (39.0%) | 560 (18.1%) | 2007 (33.1%) | 1731 (36.5%) | 276 (21.1%) |
| ≥75 years | 6640 (50.7%) | 4233 (42.4%) | 2407 (77.6%) | 2505 (41.4%) | 1571 (33.1%) | 934 (71.4%) |
| <85 years | 11718 (89.5%) | 9467 (94.8%) | 2251 (72.6%) | 5772 (95.3%) | 4649 (97.9%) | 1123 (85.8%) |
| ≥85 years | 1372 (10.5%) | 523 (5.2%) | 849 (27.4%) | 284 (4.7%) | 98 (2.1%) | 186 (14.2%) |
| Body weight (kg), mean ± SD | 81.0 ± 17.29 | 83.5 ± 16.75 | 72.9 ± 16.51 | 86.9 ± 19.94 | 91.2 ± 18.88 | 71.5 ± 15.61 |
| BMI (kg/m ²), mean ± SD | 28.1 ± 5.11 | 28.6 ± 5.05 | 26.5 ± 5.00 | 30.3 ± 5.99 | 31.3 ± 5.87 | 26.6 ± 4.89 |
| CrCl (recalc.) (mL/min), mean ± SD | 74.3 ± 30.42 | 82.1 ± 29.19 | 50.3 ± 19.61 | 78.7 ± 32.05 | 86.6 ± 30.19 | 50.0 ± 20.05 |
| Patients fulfilling ≥1 dose adjustment criteria, n (%) | 3106 (23.7%) | 1119 (11.2%) | 1987 (64.1%) | NA | NA | NA |
| CHADS ₂ , mean ± SD | 1.7 ± 1.07 | 1.6 ± 1.05 | 2.1 ± 1.03 | 2.9 ± 0.97 | 2.8 ± 0.94 | 3.1 ± 1.06 |
| CHA ₂ DS ₂ -VASc, mean ± SD | 3.1 ± 1.40 | 2.9 ± 1.37 | 3.8 ± 1.27 | 4.3 ± 1.41 | 4.2 ± 1.36 | 5.0 ± 1.39 |
| By CHA ₂ DS ₂ -VASc, n (%) | | | | | | |
| CHA ₂ DS ₂ -VASc score (<4), n (%) | 8184 (62.5%) | 6878 (68.8%) | 1306 (42.1%) | 1767 (29.2%) | 1601 (33.7%) | 166 (12.7%) |
| CHA ₂ DS ₂ -VASc score (≥4), n (%) | 4908 (37.5%) | 3113 (31.2%) | 1795 (57.9%) | 4289 (70.8%) | 3146 (66.3%) | 1143 (87.3%) |
| mod. HAS-BLED, mean ± SD | 2.5 ± 1.10 | 2.4 ± 1.08 | 2.9 ± 1.06 | 1.5 ± 0.94 | 1.4 ± 0.94 | 1.8 ± 0.89 |
| Frailty ^a , n (%) | | | | | | |
| Yes | 1392 (10.6%) | 612 (6.1%) | 780 (25.2%) | NA | NA | NA |
| No | 10820 (82.7%) | 8719 (87.3%) | 2101 (67.8%) | NA | NA | NA |
| Not known | 878 (6.7%) | 658 (6.6%) | 220 (7.1%) | NA | NA | NA |
| Previous history of CV disease, n (%) | | | | | | |
| Hypertension | 10088 (77.1%) | 7594 (76.0%) | 2494 (80.4%) | 5763 (95.2%) | 4546 (95.8%) | 1217 (93.0%) |
| Congestive heart failure | 777 (5.9%) | 478 (4.8%) | 299 (9.6%) | 3598 (59.4%) | 2847 (60.0%) | 751 (57.4%) |
| Myocardial infarction | 560 (4.3%) | 371 (3.7%) | 189 (6.1%) | 731 (12.1%) | 568 (12.0%) | 163 (12.5%) |
| Peripheral artery disease | 437 (3.3%) | 278 (2.8%) | 159 (5.1%) | 253 (4.2%) | 177 (3.7%) | 76 (5.8%) |
| Previous history of diabetes mellitus, n (%) | 2879 (22.0%) | 2057 (20.6%) | 822 (26.5%) | 2221 (36.7%) | 1833 (38.6%) | 388 (29.6%) |
| Previous history of COPD, n (%) | 1206 (9.2%) | 824 (8.2%) | 382 (12.3%) | 553 (9.1%) | 404 (8.5%) | 149 (11.4%) |
| Previous history of stroke and ICH, n (%) | | | | | | |
| Ischaemic stroke ^b | 778 (5.9%) | 564 (5.6%) | 214 (6.9%) | 998 (16.5%) | 772 (16.3%) | 226 (17.3%) |
| Intracranial haemorrhage | 62 (0.5%) | 45 (0.5%) | 17 (0.5%) | 7 (0.1%) | 4 (0.1%) | 3 (0.2%) |
| Previous history of bleeding, n (%) | | | | | | |
| Major | 129 (1.0%) | 80 (0.8%) | 49 (1.6%) | NA | NA | NA |
| Major or CRNM | 270 (2.1%) | 160 (1.6%) | 110 (3.5%) | NA | NA | NA |
| Current AF type, n (%) | | | | | | |
| Paroxysmal | 7039 (53.9%) | 5473 (54.9%) | 1566 (50.6%) | 1542 (25.5%) | 1194 (25.2%) | 348 (26.6%) |
| Persistent | 3159 (24.2%) | 2496 (25.0%) | 663 (21.4%) | 1372 (22.7%) | 1084 (22.8%) | 288 (22.0%) |
| Long-standing persistent and permanent | 2864 (21.9%) | 1997 (20.0%) | 867 (28.0%) | 3142 (51.9%) | 2469 (52.0%) | 673 (51.4%) |

Calculated scores for CHADS₂, CHA₂DS₂-VASc, and HAS-BLED are reported here.

AF, atrial fibrillation; BMI, body mass index; CrCl, creatinine clearance; COPD, chronic obstructive pulmonary disease; CRNM, clinically relevant non-major; CV, cardiovascular; ICH, intracranial haemorrhage; NA, not available; o.d., once daily; SD, standard deviation.

^aThere was no specific definition for frailty; it was left to the discretion of the physician to categorise a patient as frail.

^bThe ENGAGE AF-TIMI 48 numbers refer to ischaemic/embolic stroke.

Table 2 Baseline characteristics of patients included in ETNA-AF-Europe receiving edoxaban 60 mg and 30 mg doses in line and not in line with SmPC recommendations

| | Patients with the SmPC recommendation for 60 mg (N = 9986) | | Patients with the SmPC recommendation for 30 mg (N = 3106) | |
|--|--|----------------------------|--|----------------------------|
| | 60 mg recommended dose | 30 mg non-recommended dose | 30 mg recommended dose | 60 mg non-recommended dose |
| Patients, N (%) | 8872 (67.8%) | 1114 (8.5%) | 1987 (15.2%) | 1119 (8.5%) |
| Male, n (%) | 5697 (64.2%) | 656 (58.9%) | 713 (35.9%) | 364 (32.5%) |
| Age (years), mean | 71.1 | 76.4 | 81.3 | 77.3 |
| (calc.) CHA ₂ DS ₂ -VASc, mean | 2.8 | 3.4 | 4.0 | 3.6 |
| (calc.) mod. HAS-BLED, mean | 2.6 | 3.2 | 3.1 | 3.1 |
| CrCl (recalculated) (mL/min), mean | 86.4 | 69.6 | 41.6 | 51.9 |
| Body weight (kg), mean | 85.7 | 84.8 | 66.7 | 66.3 |
| BMI (kg/m ²), mean | 29.1 | 29.4 | 25.0 | 24.6 |

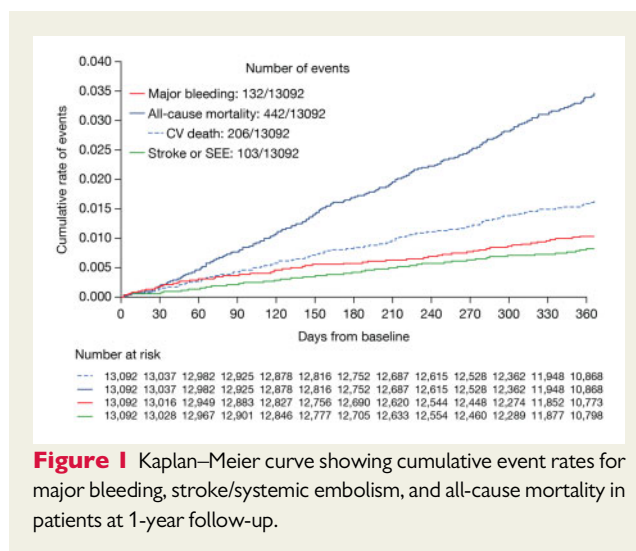
diagnosis was symptomatic in 54% and asymptomatic in 34% of the patients. The remaining 12% were reported as unknown by the investigator. The most common type of reported symptoms among the symptomatic patients at baseline were palpitations (69%), followed by dyspnoea (60%), and fatigue (58%). The median time between first diagnosis of AF and enrolment was 4.6 months (IQR: 0.4–29.9). Frequent comorbidities included hypertension (77%), diabetes (22%), valvular heart disease (18%), congestive heart failure (6%), and history of myocardial infarction (4%).

Over three-quarters of patients (76%) were prescribed the full dose of edoxaban (edoxaban 60 mg). Compared with those receiving edoxaban 60 mg, patients receiving edoxaban 30 mg were older and had a lower body weight and CrCl. Furthermore, patients receiving edoxaban 30 mg had more comorbidities and a greater proportion of these patients had a prior history of stroke and bleeding (Table 1). The overall adherence to the summary of product characteristics (SmPC) dosing recommendations was observed in 83% (10 859 of 13 092) patients. Non-adherence to the SmPC was observed in 11% of patients receiving edoxaban 60 mg vs. 36% of those receiving the 30 mg dose. Overall, 1191 of 13 092 patients (9.1%) permanently discontinued from edoxaban treatment, and 11 901 of 13 092 patients (90.9%) were still receiving edoxaban at the end of 1-year follow-up.

Patients who were prescribed the reduced dose of edoxaban (30 mg/day) despite the SmPC dosing recommendation for receiving edoxaban 60 mg had a higher mean age, mean CHA₂DS₂-VASc and modified HAS-BLED scores, a lower mean CrCl, and similar mean body weight and BMI (Table 2) compared with those receiving the recommended full dose. Patients who were prescribed edoxaban 60 mg despite the SmPC dosing recommendation for receiving the reduced dose had a lower mean age, lower mean CHA₂DS₂-VASc and modified HAS-BLED scores, a higher mean CrCl, and similar mean body weight and BMI vs. those receiving the recommended reduced 30 mg dose (Table 2).

Mortality, stroke, and major bleeding

During the 1-year follow-up period, the overall rates of major bleeding, stroke, and systemic embolism as well as all-cause mortality were low and linearly increasing over time (Figure 1). Specifically, 442



patients died (3.5%/year), of whom 206 patients (1.6%/year) died of CV causes (Table 3).

Major bleeding events occurred in 132 patients (1.05%/year), in whom 51 (0.4%/year) were gastro-intestinal bleeds and 30 (0.2%/year) were intracranial bleeds. Stroke or systemic embolism occurred in 103 patients (0.8%/year) (Table 3). All-cause mortality, CV mortality, any rates of stroke/SEE, and major bleeding events were lower in ETNA-AF-Europe vs. the non-Asian ethnicity cohort of ENGAGE AF-TIMI 48 (Table 3, Supplementary material online, Figures S1 and S2).

Patients who were older (ranged between <65 and ≥75 years), frail patients (as defined by the investigator), and patients with higher CHA₂DS₂-VASc scores (≥4) were at higher risk of events (Figures 2–4).

Dosing effects

All-cause mortality, CV mortality, and rates of major bleeding were higher in patients receiving edoxaban 30 mg dose vs. those receiving edoxaban 60 mg (Table 3). Patients who were prescribed the reduced

Table 3 Safety and efficacy outcomes in all patients included in ETNA-AF-Europe and ENGAGE AF-TIMI 48

| Annualized event rates, n (%/year) (95% CI) | ETNA-AF-Europe | | | ENGAGE AF-TIMI 48 (non-Asian cohort) | | |
|--|------------------------|------------------------|------------------------|--------------------------------------|---------------------|-----------------------------|
| | Total | Edoxaban 60 mg o.d. | Edoxaban 30 mg o.d. | Total | Edoxaban 60 mg o.d. | Edoxaban dose adj. to 30 mg |
| Patients, N (%) | 13092 (100%) | 9991 (76.3%) | 3101 (23.7%) | 6056 (100%) | 4747 (78.4%) | 1309 (21.6%) |
| Primary outcomes | | | | | | |
| Major bleeding | 132 (1.05) (0.88–1.25) | 85 (0.88) (0.70–1.09) | 47 (1.61) (1.18–2.14) | 468 (2.95) | 358 (2.84) | 110 (3.37) |
| Major or CRNM bleeding | 293 (2.35) (2.09–2.63) | 200 (2.08) (1.81–2.39) | 93 (3.22) (2.60–3.94) | 1437 (10.15) | 1121 (9.99) | 316 (10.77) |
| Major GI bleeding | 51 (0.40) (0.30–0.53) | 25 (0.26) (0.17–0.38) | 26 (0.89) (0.58–1.30) | 254 (1.58) | 200 (1.56) | 54 (1.62) |
| ICH ^a | 30 (0.24) (0.16–0.34) | 23 (0.24) (0.15–0.36) | 7 (0.24) (0.10–0.49) | 66 (0.40) | 48 (0.37) | 18 (0.53) |
| Cardiovascular mortality (sensitivity analysis) ^b | 206 (1.63) (1.42–1.87) | 108 (1.11) (0.91–1.35) | 98 (3.34) (2.71–4.07) | 456 (2.74) | 287 (2.17) | 169 (4.89) |
| All-cause mortality | 442 (3.50) (3.18–3.84) | 231 (2.38) (2.09–2.71) | 211 (7.19) (6.25–8.23) | 677 (4.06) | 437 (3.31) | 240 (6.95) |
| Secondary outcomes | | | | | | |
| Any stroke or systemic embolism | 103 (0.82) (0.67–0.99) | 74 (0.77) (0.60–0.96) | 29 (0.99) (0.66–1.42) | 245 (1.51) | 167 (1.29) | 78 (2.34) |
| Ischaemic stroke | 70 (0.56) (0.43–0.70) | 50 (0.52) (0.38–0.68) | 20 (0.68) (0.42–1.05) | 202 (1.24) | 138 (1.07) | 64 (1.91) |
| Haemorrhagic stroke | 14 (0.11) (0.06–0.19) | 12 (0.12) (0.06–0.22) | 2 (0.07) (0.01–0.25) | 34 (0.21) | 24 (0.18) | 10 (0.30) |
| Myocardial infarction | 66 (0.52) (0.41–0.67) | 44 (0.45) (0.33–0.61) | 22 (0.75) (0.47–1.14) | 120 (0.73) | 81 (0.62) | 39 (1.17) |

ETNA-AF-Europe and ENGAGE AF-TIMI 48 data are not intended for comparison.

CRNM, clinically relevant non-major bleeding; GI, gastrointestinal; ICH, intracranial haemorrhage.

^aIntracranial haemorrhage included epidural, subdural, subarachnoid, intracerebral, or unknown haemorrhage.

^bCardiovascular mortality sensitivity is a conservative exercise because also patients with an unknown or unconfirmed cause of death are calculated as CV death.

dose of edoxaban 30 mg despite the SmPC dosing recommendation for receiving edoxaban 60 mg had higher rates of all-cause death, CV death, and major bleeding in comparison with those receiving the recommended edoxaban 60 mg. However, rates of stroke/SEE and ischaemic stroke were not higher in those receiving the non-recommended 30 mg vs. the recommended 60 mg dose (Figure 5, Supplementary material online, Table S1). Patients who were prescribed edoxaban 60 mg despite the SmPC dosing recommendation for receiving the reduced dose had lower annualized event rates of all-cause death, CV death, major bleeding, any stroke/SEE, and ischaemic stroke in comparison with those receiving the recommended edoxaban 30 mg (Figure 5, Supplementary material online, Table S1).

Using the stepwise logistic regression model, the factors related to all-cause mortality and major bleeding were identified (Supplementary material online, Tables S2 and S3). The main factors included older age (defined as ≥ 85 years and ≥ 75 years), history of chronic obstructive lung disease, congestive heart failure, CHA₂DS₂-VASc (≥ 4), female sex, and edoxaban dose 30 mg o.d. A higher frequency of these variables was observed in patients receiving edoxaban 30 mg o.d., a finding that relates with an increased risk of events in patients receiving 30 mg vs. 60 mg dose.

Discussion

To our knowledge, this report provides the first outcome data on patients treated with edoxaban in routine care, enrolled into ETNA-AF-Europe, the largest prospective, non-interventional study

investigating a single NOAC to date. The results illustrate low rates of bleeding and ischaemic events, thereby complement data from the ENGAGE AF-TIMI 48, the landmark randomized trial that demonstrated superior safety and non-inferior efficacy of edoxaban vs. warfarin. The strengths of the ETNA-AF-Europe study include a large sample size, a prospective study design, an international setting, and the lack of explicit exclusion criteria, validating the reliability and generalizability of data.

Various registries and retrospective analyses have looked into how the outcomes of randomized NOAC trials may translate into routine practice in terms of favourable safety and effectiveness of NOACs. Low rates of stroke and major bleeding were observed in patients receiving rivaroxaban in routine clinical practice (XANTUS registry).¹⁶ In the 1-year follow-up of EURObservational Research Programme on AF (EORP-AF) Long-Term General Registry, the cumulative event-free survival from the main outcomes was the highest amongst patients treated only with NOACs vs. other antithrombotic agents.¹⁷ Data from retrospective analyses have also shown lower risks of stroke/SE and lower-to-comparable bleeding events with NOACs vs. VKAs.^{18,19} Findings noted in ETNA-AF-Europe now complement the outcomes reported in other real-world registries.

Lower rates of major bleeding and stroke/SEE were observed in ETNA-AF-Europe compared with the non-Asian ethnicity cohort of ENGAGE AF-TIMI 48, while mortality and CV deaths were comparable between the two data sets. The ENGAGE AF-TIMI 48 inclusion criteria allowed the enrolment of patients with a CHADS₂ score of at least 2, whereas the population in ETNA-AF-Europe was unselected with respect to CHADS₂ score at baseline. This translated

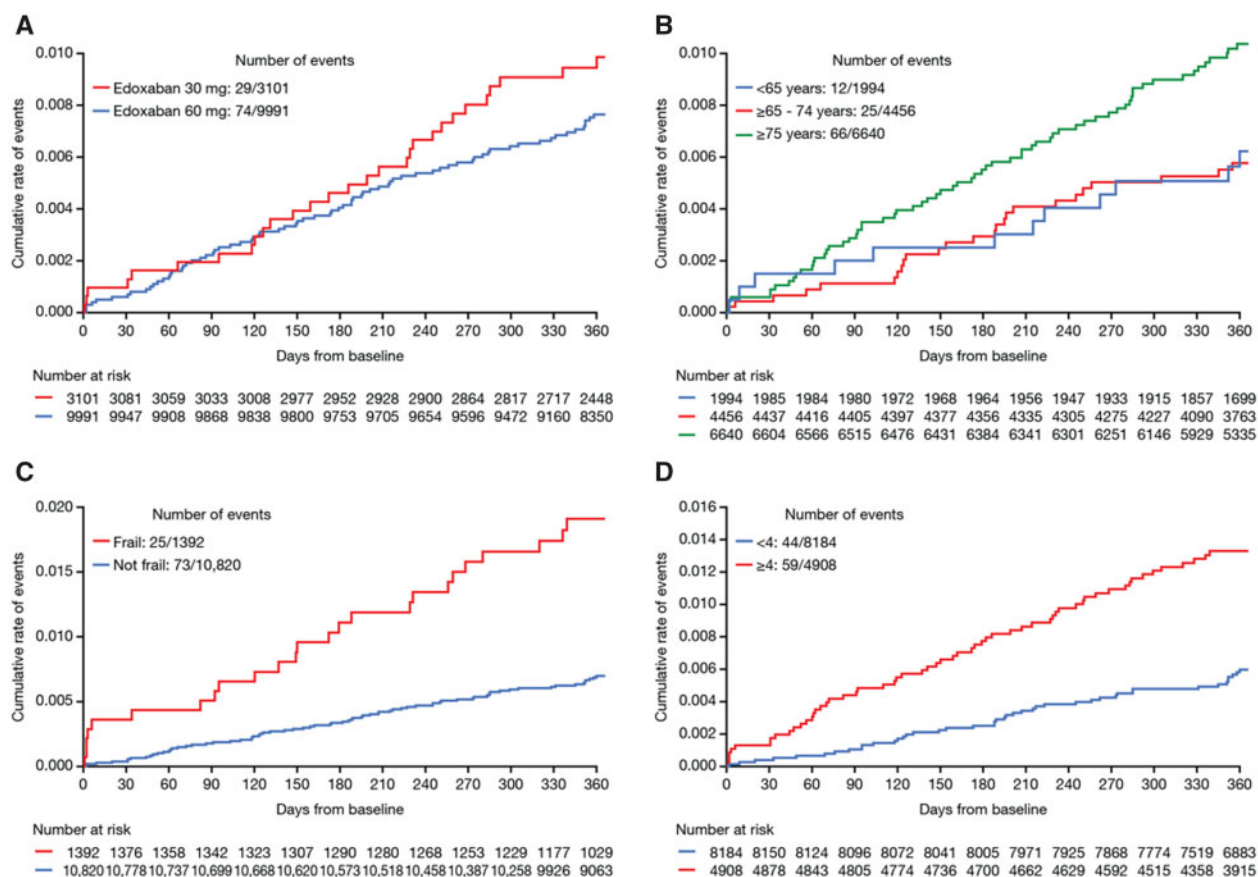


Figure 2 Kaplan–Meier curves showing cumulative event rates for stroke/systemic embolism in patients at 1-year follow-up classified by: (A) edoxaban dose, (B) age groups, (C) frailty status, and (D) CHA₂DS₂-VASc groups.

into a lower CHA₂DS₂-VASc score in the ETNA-AF-Europe vs. ENGAGE AF-TIMI 48 (3.1 vs. 4.3) which might have contributed towards different event rates but may represent more generalized prescribing of edoxaban since the randomized trial and marketing authorization.

There was a good overall adherence of 83% (10 859 out of 13 092 patients) to the SmPC dosing recommendations, suggesting that the dose reduction criteria of edoxaban are generally followed in routine clinical care. Notably, the permanent discontinuation rate was relatively low (9.1%) compared with other registries (e.g. discontinuation rate of 20.1% at 1 year was noted in the XANTUS registry).¹⁶

A comparison of outcomes in patients receiving the two doses generated interesting observations. More deaths and numerically higher bleeding events were reported in patients receiving the reduced edoxaban 30 mg/day regimen. This can potentially be explained by the fact that the criteria for dose reduction (renal impairment, lower body weight, and concomitant P-gp inhibitor therapy) are markers for patients at high risk of thromboembolic and bleeding events. In line with this hypothesis, patients receiving edoxaban 30 mg were older (80 vs. 72 years) and had almost one point higher CHA₂DS₂-VASc score (3.8 vs. 2.9) than those receiving edoxaban 60 mg. Findings observed in ETNA-AF-Europe were in line with

those reported in the non-Asian cohort of ENGAGE AF-TIMI 48, with higher rates of bleeding, stroke, and mortality noted in the edoxaban 30 mg vs. 60 mg dose group (Table 2, Figures 3–5). Of note, there was no clear signal for a higher stroke rate.

A further exploratory analysis of patients receiving non-recommended doses yielded noteworthy observations. Overall, patients treated with the non-recommended doses of edoxaban 30 mg and 60 mg daily had an intermediate risk profile, as observed both in the baseline characteristics and in the study outcomes. These findings infer that physicians prescribed doses not in line with the SmPC recommendation in patients that had ‘midway’ baseline characteristics between the higher and lower dose recommendations, and based on their clinical judgement, clinicians selected a higher or lower dose as they deemed appropriate or that awareness of dose reduction criteria was not scrutinized in detail or that prescribing occurred in settings outside of the formal anticoagulation clinic settings. This may explain the higher rate of annualized events of all-cause death, CV death, and major bleeding in patients receiving the non-recommended 30 mg vs. those receiving the recommended 60 mg dose. Similar patterns have been observed in patients treated with other NOACs, with under-dosing observed to be associated with higher risk for adverse events.^{20,21} Importantly, the current data

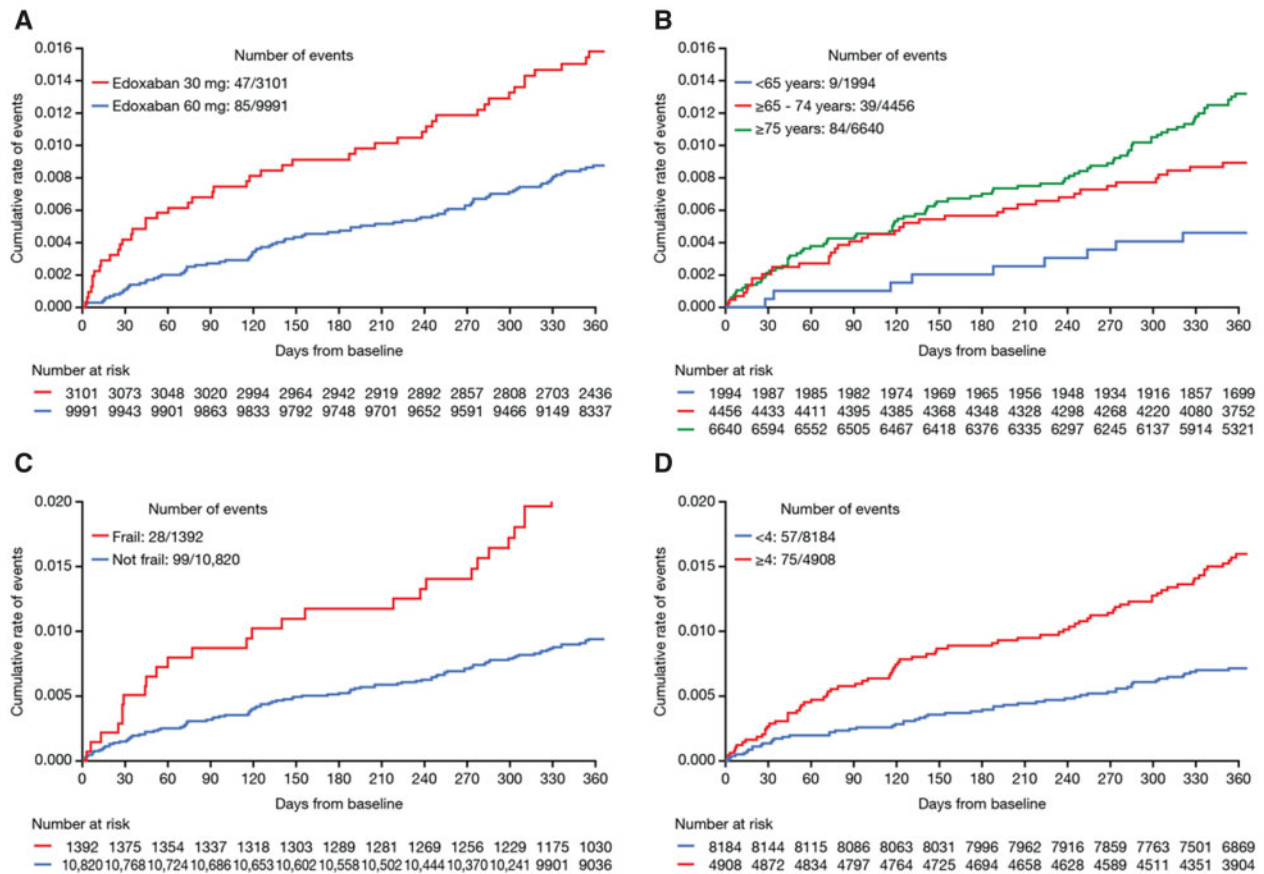


Figure 3 Kaplan–Meier curves showing cumulative event rates for major bleeding events in patients at 1-year follow-up classified by: (A) edoxaban dose, (B) age groups, (C) frailty status, and (D) CHA₂DS₂-VASc groups. Major bleeding was defined as a clinically overt bleeding event (i.e. bleeding that is visualized by examination or radiologic imaging) that meets at least one of the following: (A) Fatal bleeding. (B) Symptomatic bleeding in a critical area or organ such as, retroperitoneal, intracranial, intraocular, intraspinal, intra-articular, pericardial, and intramuscular with compartment syndrome. (C) A clinically overt bleeding event that causes a fall in haemoglobin level of 2.0 g/dL (>1.24 mMol/L) or more; or a fall of haematocrit of 6.0% or more, adjusted for transfusion.

set is not powered to assess small differences in stroke rates, but there was no signal for a higher stroke rate in patients receiving the non-recommended low dose of edoxaban. However, there are too few events in patients taking the non-recommended doses to determine a clinically relevant, substantial difference compared with those taking the recommended doses. A longer follow-up of ETNA-AF-Europe may provide more information on the effects of non-approved dosing.¹³

Advancing age and accumulation of comorbidities, including vascular disease, heart failure, diabetes, chronic kidney disease, as well as frailty are believed to increase thromboembolic and bleeding risks in patients with AF.²² In line with existing data for elderly patients,²² the ETNA-AF-Europe registry reported higher rates of clinical outcomes in elderly patients. Noticeably, the real-world penetration of anticoagulation in elderly and frail patients remains low. It is despite this population being at a higher risk for ischaemic events by virtue of their age and burden of associated comorbidities,²³ and may be driven by a fear of bleeding associated with the use of oral anticoagulation.²⁴ Furthermore, VKAs remain commonly used.²⁵ Compared

with VKAs, NOACs have been associated with lower risks of thromboembolic events, major bleeding, and all-cause death in octogenarian and frail patients.^{6,8,26,27} The ETNA-AF-Europe dataset demonstrates a low and constant rate of ICH in elderly and younger patients with AF, replicating findings observed in patients receiving other anticoagulants¹⁶ and the constant ICH rate across edoxaban plasma concentrations in ENGAGE AF-TIMI 48 in non-Asian patients.²⁸ Increased rates of other bad outcomes were observed in frail vs. non-frail patients, as simply reported by investigators, included in the ETNA-AF-Europe registry. The data accumulated so far including ETNA-AF-Europe reinforce the ability of NOACs, and particularly edoxaban, to improve outcomes and quality of life in elderly and frail patients.

A trend towards a greater rate of major bleeding events occurred within the first month of initiating the study in high-risk patients, including those receiving edoxaban 30 mg, the elderly and frail population, and those with CHA₂DS₂-VASc score ≥4; while stroke/SEE and all-cause mortality were more evenly distributed over the 1 year of follow-up. This is most likely related to unmasking of bleeding

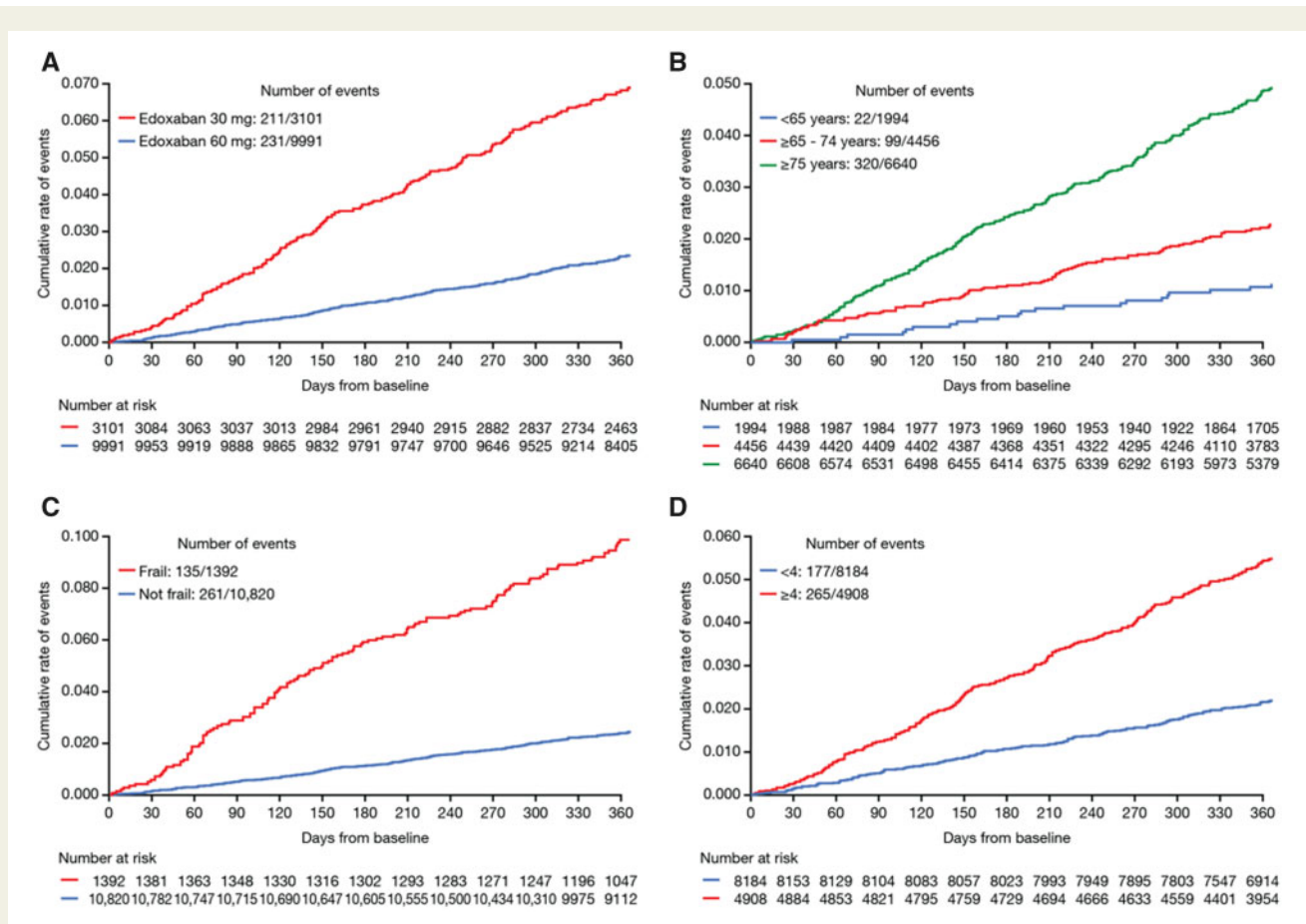


Figure 4 Kaplan–Meier curves showing cumulative event rates for all-cause mortality in patients at 1-year follow-up classified by: (A) edoxaban dose, (B) age groups, (C) frailty status, and (D) CHA₂DS₂-VASc groups.

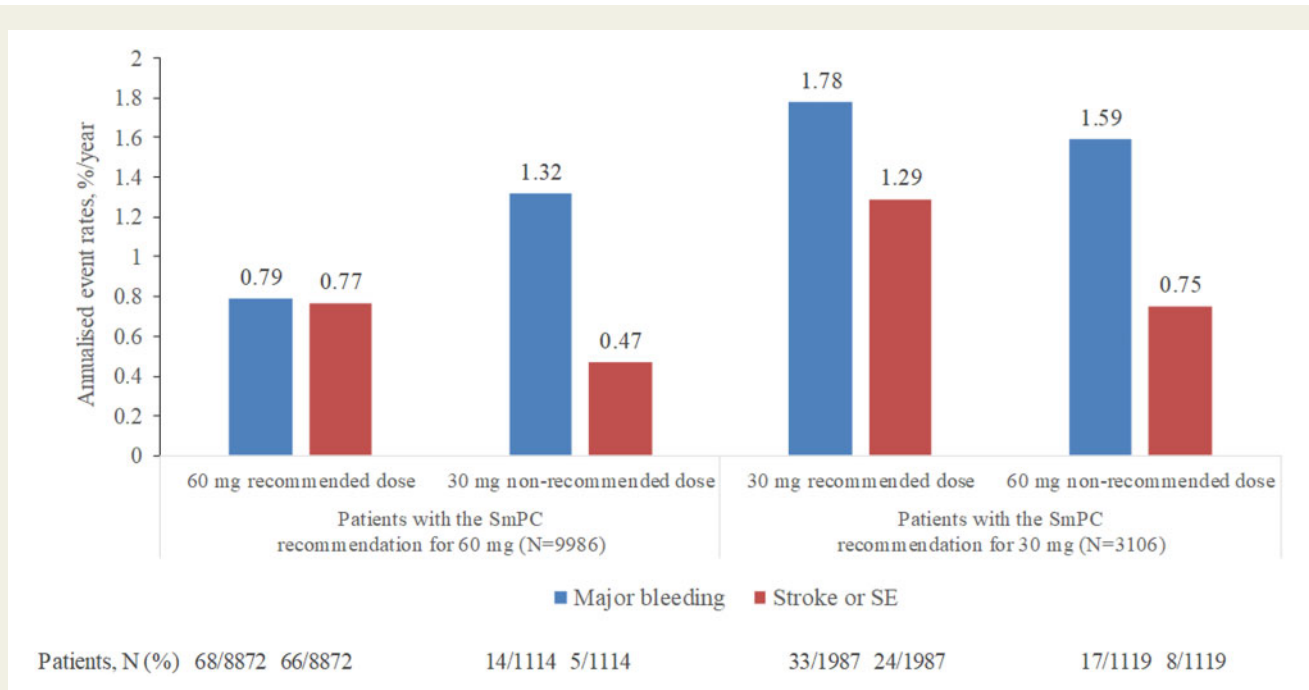


Figure 5 Major bleeding and stroke/SEE in ETNA-AF-Europe patients dosed in line and not in line with SmPC recommendations. SE, systemic embolism; SmPC, summary of product characteristics.

