

RESEARCH ARTICLE

Open Access



# Genome-wide association study reveals significant genomic regions for improving yield, adaptability of rice under dry direct seeded cultivation condition

Sushil Raj Subedi<sup>1,6,7</sup>, Nitika Sandhu<sup>1,8</sup>, Vikas Kumar Singh<sup>2</sup>, Pallavi Sinha<sup>3</sup>, Santosh Kumar<sup>4</sup>, S. P. Singh<sup>5</sup>, Surya Kant Ghimire<sup>6</sup>, Madhav Pandey<sup>6</sup>, Ram Baran Yadav<sup>7</sup>, Rajeev K. Varshney<sup>3</sup> and Arvind Kumar<sup>1\*</sup>

## Abstract

**Background:** Puddled transplanted system of rice cultivation despite having several benefits, is a highly labor, water and energy intensive system. In the face of changing climatic conditions, a successful transition from puddled to dry direct seeded rice (DDSR) cultivation system looks must in future. Genome-wide association study was performed for traits including, roots and nutrient uptake (14 traits), plant-morphological (5 traits), lodging-resistance (4 traits) and yield and yield attributing traits (7 traits) with the aim to identify significant marker-trait associations (MTAs) for traits enhancing rice adaptability to dry direct-seeded rice (DDSR) system.

**Results:** Study identified a total of 37 highly significant MTAs for 20 traits. The false discovery rate (FDR) ranged from 0.264 to  $3.69 \times 10^{-4}$ , 0.0330 to  $1.25 \times 10^{-4}$ , and 0.0534 to  $4.60 \times 10^{-6}$  in 2015WS, 2016DS and combined analysis, respectively. The percent phenotypic variance (PV) explained by SNPs ranged from 9 to 92%. Among the identified significant MTAs, 15 MTAs associated with the traits including nodal root, root hair length, root length density, stem and culm diameter, plant height and grain yield were reported to be located in the proximity of earlier identified candidate gene. The significant positive correlation of grain-yield with seedling establishment traits, root morphological and nutrient-uptake related traits and grain yield attributing traits pointing towards combining target traits to increase rice yield and adaptability under DDSR. Seven promising progenies with better root morphology, nutrient-uptake and higher grain yield were identified that can further be used in genomics assisted breeding for DDSR varietal development.

**Conclusions:** Once validated, the identified MTAs and the SNPs linked with trait of interest could be of direct use in genomic assisted breeding (GAB) to improve grain yield and adaptability of rice under DDSR.

**Keywords:** Dry direct seeded, Marker-trait association, Nutrient uptake, Rice, Root, Yield

## Background

Developing resource-water-labor-energy efficient, dry direct seeded adapted rice varieties under reducing water-labor availability in agriculture is necessary for the sustainability of world's future food security [1]. The continuous efforts involving yield improvement under direct seeded conditions through better exploitation of

genetic and genomic resources may lead to a breakthrough in improving rice yield and adaptability under dry direct seeded rice (DDSR) situation. The rapid development of next-generation sequencing (NGS) technologies has opened new avenues to harness existing genetic diversity to better understand the genetic basis of targeted traits and to deploy in genomics-assisted breeding (GAB) program [2, 3]. Advanced genotyping technologies offer opportunities to plant breeding community to sequence every individual of GAB in several folds of crop genome at lower cost [4].

\* Correspondence: [a.kumar@irri.org](mailto:a.kumar@irri.org)

<sup>1</sup>Rice Breeding Platform, International Rice Research Institute, DAPO Box 7777, Metro Manila, Philippines

Full list of author information is available at the end of the article



Water-saving technologies such as SRI (system of rice intensification) [5], AWD (alternate wetting and drying) [6] and DDSR (dry direct seeded rice) [7] can be advocated as suitable alternative to PTR. DDSR has the potential to ensure overall sustainability of rice cultivation systems when applied as a full package comprising laser-assisted land levelling, conservation tillage, crop establishment, harvesting and processing using smart machines, integrated weed management, precision input delivery especially of water and nutrients and suitable varieties. DDSR accounted for 28% area in India, 45% in Korea, 39 to 47% in Vietnam and more than 90% collectively in United States, Sri Lanka, and Malaysia [8]. The mechanized DDSR method of rice cultivation has been estimated to provide a potential irrigation water savings of  $40 \text{ cm ha}^{-1}$ , labor savings of 25 person-days  $\text{ha}^{-1}$ , energy savings of  $1500 \text{ MJ ha}^{-1}$ , a reduction of GHG emissions of  $1500 \text{ kg CO}_2 \text{ equivalent ha}^{-1}$ , yield increase of  $0.5 \text{ t ha}^{-1}$  and increased net economic return of  $\text{USD } 50 \text{ ha}^{-1}$  with positive effect on soil health in most of the rice-growing countries [8]. DDSR combines the advantage of better adaptation of upland rice varieties in aerobic soil and high yield potential of lowland varieties adapted to anaerobic soil.

A number of plant morphological features such as leaf size, thickness, angle, shape [9] play a remarkable role in photosynthesis [10], flowering time [11–13], lodging resistance [14] and plant height [15] and ultimately determine the crop productivity. The phenotypic root plasticity, root morphology and plant architecture largely affect crop productivity and therefore represent the key targets for the marker-assisted breeding schemes designed for increasing yield, biotic/abiotic stress tolerance and grain quality [16–18]. DDSR faces the key challenge of reduced nutrient uptake especially nitrogen, phosphorus and iron [19] than traditional puddled rice cultivation system. The lower uptake of nutrients create adverse effect on plant agronomic traits such as height, growth rate, tillering ability, leaf area index, spikelet number, grain filling and physiological processes such as photosynthesis, respiration and hormonal metabolism [20]. Lodging has been found as one of the major constraints in attaining high yield in DDSR compared to puddled system of rice cultivation. Moderate plant height, culm and stem diameter, thickness, length and strength are important traits contributing to lodging resistance under DDSR [21]. Root development and root system architecture is highly responsive to nutrient availability [18, 19, 22] and root traits reported to be associated with water uptake and grain yield in rice [23, 24], wheat [25], maize [26] and soybean [27]. Addressing the challenge of appropriate plant and root architecture, efficient nutrient uptake, early vegetative vigor, early and uniform emergence, lodging resistance under DDSR and

dissecting the genetic basis to maximize the potential to breed high-yielding resource-efficient DDSR varieties using modern biotechnological and bioinformatic approaches is mandatory. A better knowledge of rice root system including number of nodal roots, lateral roots, root length density, root biomass and root branching with more root hairs is must. The proper understanding of the relationship of these root morphological traits with nutrient uptake and grain yield may be important to the development of rice varieties with flexibility to be grown under variable situations ranging from wet and dry direct seeded to transplanted situations.

Genotyping by sequencing (GBS) has allowed breeders and researchers to track chromosome segments and marker-trait associations in QTL-mapping and genome-wide association studies (GWAS) [28]. The emergence of cheap, high-throughput genotyping platforms like GBS, that have sufficient marker density can be used successfully in association mapping studies in complex crop species including wheat [29], foxtail millet [30], soybean [31], maize [32, 33], rice [34], chickpea [35] and pigeonpea [36, 37].

Genome wide association mapping has been reported as an effective method to fine map the complex traits contributing to productivity in crop species [34, 38]. GWAS can be applied to study the statistical marker-trait associations involving diverse germplasm, landraces, multi-parent breeding population and NAM (nested association mapping population) populations [39]. Identification of cost-effective, easy to use, widely distributed, co-dominant, phenotype-associated and regulatory SNPs, candidate genes and regulatory pathways could represent a significant milestone to accelerate the global hunt to improve rice yield under DDSR. Crop improvement programs can use association studies to access the allelic diversity and to identify the best alleles to be assembled in developing superior DDSR adapted rice varieties. A well-defined image of traits needed for DDSR, linked SNPs and functional characterization of underlying candidate genes will help rice breeders to choose specific donors, recipients and traits to undertake a systematic breeding program enhancing adaptability and improving rice yield under DDSR.

In the present study, we performed GWAS for 39 traits including seedling establishment traits, root and plant morphological traits, yield and yield attributing traits in a MAGIC (Multi-parent advanced generation inter-cross) population with the aim to identify significant marker-trait associations to be used directly to breed high yielding and nutrient-efficient rice varieties for DDSR condition.

## Methods

### Development of MAGIC population

The MAGIC population used in the study was developed by the inter-crossing of five diverse parents: IR

87707-446-B-B-B, NSICRc 222, IR 74371-54-1-1, Vandana and Kali Aus that has been characterised for upland adaptability (NSICRc 192, Vandana, Kali Aus), better root system (Kali Aus), drought tolerance (IR 87707-446-B-B-B, NSICRc 192, Kali Aus) and high yield under lowland adapted rainfed environment (NSICRc 222). The detailed description on trait characteristics of parental progenies is presented in Table 1. These parents were intermated and recombined through further selfing to develop a MAGIC population comprised of 300 progenies. The detailed schematic representation of the development of the MAGIC population and phenotyping and genotyping screening is provided in Fig. 1.

### Field experiments

The field experiments were conducted in upland farm fields at the International Rice Research Institute (IRRI), Los Banos, Laguna, Philippines ( $14^{\circ} 10' 11.81''$  N,  $121^{\circ} 15' 22''$  E) in 2015 wet season (2015WS) and 2016 dry season (2016DS). The data on average rainfall, temperature, humidity, solar radiation and pressure across 2015WS and 2016DS is presented in Additional file 2: Figure S1. In the present study, the term “dry direct-seeded” refers to the sowing of rice directly in the dry field without any nursery-bed raising in non-puddled, well-levelled fields. To ensure better pulverization, better germination and weed control, the field was prepared 1 month prior to sowing. Furrow was prepared using a tractor, and basal fertilizer was incorporated in the soil. To control weeds, combination of pre-emergence (Oxadiazon @ 0.5 kg ai ha<sup>-1</sup> at 6 days after seeding (DAS)), early post emergence (Bispyribac sodium @ 0.03 kg ai ha<sup>-1</sup> (9.7%, nominee) at 11 and 22 DAS) followed by spot weeding at 35 and 55 DAS was used. Integrated pest management (IPM) practices involving rat baiting using dithrac @ 0.05 g kg<sup>-1</sup> = 0.005% brodifacoum bait to control rats with the pre-seeding application of Fipronil @ 0.075 kg ai ha<sup>-1</sup> along the bunds and at 7 DAS along the plot edges was followed. The seeding was done at 2 cm depth in furrows in the dry plots. The seeding density was 2 g per progeny (approximately 30–35 seeds per row) for the two rows. Out of

total 3 m row, the central 2 m was used for the measurement of grain yield and yield related traits and remaining 1 m (0.5 m at both side) was used for destructive sampling for the measurement of root traits at different growth stages. Sprinkler method of irrigation was used during the seedling establishment stage (1 to 21 DAS) and thereafter surface irrigation was applied once or twice a week depending on the weather and crop water status. Then irrigated field was allowed to drain naturally through normal seepage and percolation.

### 2015WS

A total of 450 F<sub>2</sub> derived F<sub>3</sub> progenies with significant phenotypic variability for grain yield and yield attributing traits along with five parents and five checks were evaluated in an augmented design (100 progenies per block × 5 blocks) under DDSR conditions. The total fertilizer rate was 100-35-30 NPK kg ha<sup>-1</sup>.

### 2016DS

A total of 300 F<sub>3</sub> derived F<sub>4</sub> progenies with significant phenotypic variability for grain yield and yield attributing traits along with five parents and five checks were evaluated in an alpha-lattice design (5 progenies per block × 62 blocks) with two replications under DDSR conditions. The total fertilizer rate was 120-40-40 NPK kg ha<sup>-1</sup>.

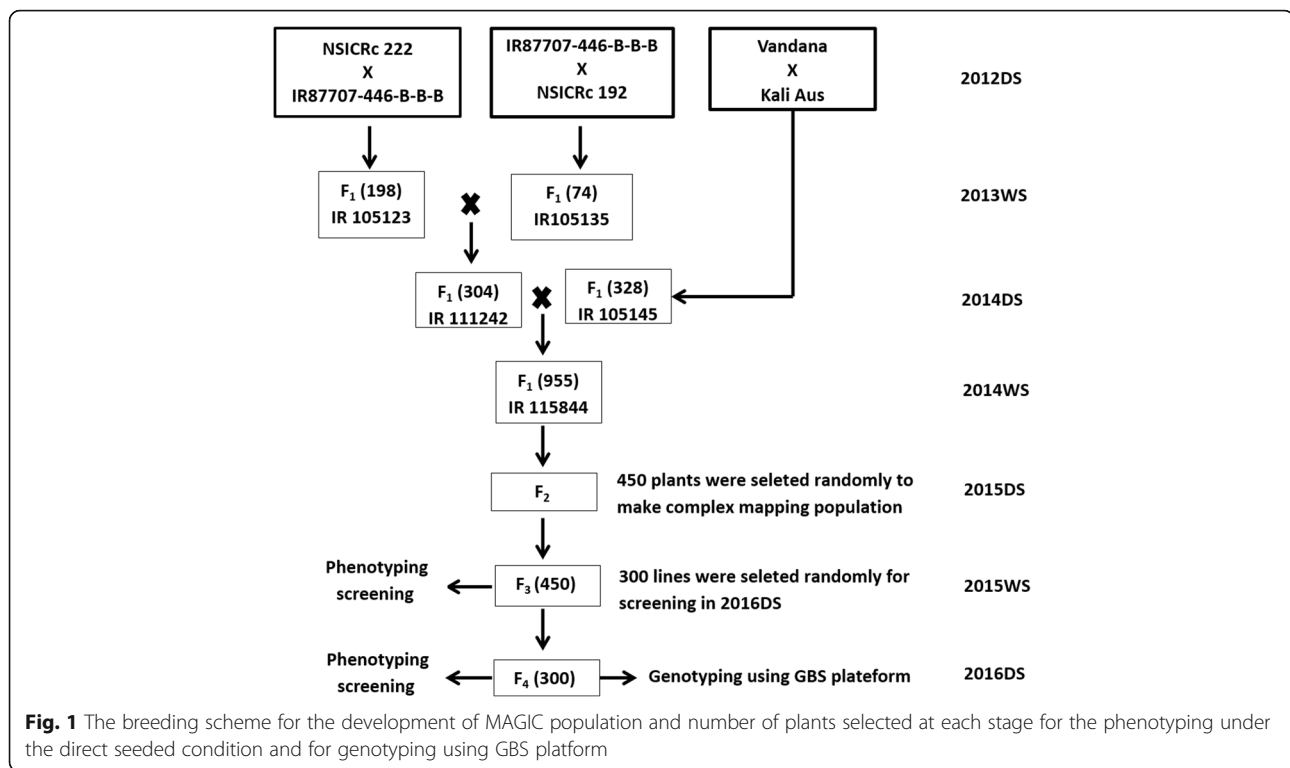
The detailed description of experiments conducted and traits measured under the present study is presented in Table 2.

### Measurements of phenotypic traits

Five parental progenies, five checks and 300 progenies from the MAGIC population were characterized for a total of 39 agronomically important traits (Table 2; Additional file 2: Figure S2). These traits include the seedling establishment traits (9), root morphological and nutrient uptake traits (14), lodging resistance traits (4), plant morphological traits (5), grain yield and yield-related traits (7). Evaluation and characterization was done under DDSR in 2015WS and 2016DS at IRRI, Philippines.

**Table 1** Description of the parental lines used for developing the MAGIC population

S.N.	Parental Line	Country of origin	Agronomic Relevance
1	NSICRc 222	Philippines	High yielding irrigated variety (5.0–8.0 t ha <sup>-1</sup> ), 105 to 110 days to maturity
2	IR 87707-446-B-B-B	Philippines	Drought tolerant rice variety in IR64 background released in Nepal as Sukha dhan 4 in 2014 (125 days to maturity) and Myanmar as Yaenelo 4 in 2015 (115 days to maturity) and an average grain yield of 4.0 to 5.0 t ha <sup>-1</sup>
3	NSICRc 192	Philippines	High yielding drought tolerant rice varieties (3.7–5.5 t ha <sup>-1</sup> ) released as Sahod Ulan 1 in the Philippines in 2009 (110 days to maturity)
4	Vandana	India	Semi-tall, white kernels with long and bold grain, upland adapted rice variety, and an average grain yield of 4.0 to 5.0 t ha <sup>-1</sup>
5	Kali Aus	India	Medium-duration drought tolerant, long and deep root system and an average grain yield of 4.0 to 5.0 t ha <sup>-1</sup>



### Seedling establishment traits

Seedling emergence was recorded regularly from 3 to 12 days after seeding (DAS). Days to first emergence (DTFirst) refers to the emergence of seedling (one or two) from the soil and days to full emergence (DTFull) refers to the emergence of 90–95% of seedling per plot.

For early vegetative vigor, the randomly three seedlings per plot were uprooted from the soil using trowel at 15, 22 and 30 days after seeding. The roots and shoots were separated and the shoot was oven dried at 60 °C for 72 h. The oven dried shoot was then weighed to calculate RGR (Relative Growth Rate). RGR for 15 to 22 DAS (RGR1), 22 to 29 DAS (RGR2) and 15 to 29 DAS (RGR3) was calculated by using following formula [19].

$$\frac{\log(\text{dry shoot weight at sampling 2}) - \log(\text{dry shoot weight at sampling 1})}{(\text{date of sampling 2} - \text{date of sampling 1})}$$

The separated roots were used for the root traits measurements. Vegetative vigor (VVG) was also recorded following 1–9 scale (1: extra vigorous, 3: vigorous, 5: normal, 7: weak, 9: very weak) at 30 DAS according to the IRRI Standard Evaluation System for Rice [41].

### Measurements of root traits

For the measurement of root traits, the random three plants were removed from the soil at each sampling. The soil sections surrounding the plant containing roots were removed by digging a hole (40 cm deep). The roots and shoots were then separated by cutting from the top

soil line. The separated roots were put into a sieve and washed gently with tap water. The number of Nodal roots (NR) [number of nodal roots at 15 DAS (NR1), number of nodal roots at 22 DAS (NR2), number of nodal roots at 29 DAS (NR3)] and maximum root length (RL) [maximum root length at 15 DAS (RL1), maximum root length at 22 DAS (RL2), maximum root length at 29 DAS (RL3)] were recorded. The nodal roots were counted manually, and the maximum root length was measured using ruler measured in centimetre. The measurements on root hair length and density were recorded on six root samples following the procedure as described by Sandhu et al. [19].

At booting stage, the Leaf Color Chart (LCC) developed by IRRI was used along with the chlorophyll meter (SPAD) (Minolta 502) to estimate and validate the relative accuracy of LCC in measuring greenness of fully expanded flag leaf nitrogen (N) concentration. The color of the flag leaf from the three randomly chosen plants was measured by placing the middle part of the middle lobe of the flag leaf in front of the color strip (LCC) for the comparison. The three phenotypically similar plants with approximately same value of LCC and SPAD were then uprooted for the total above-ground biomass measurement. The above ground fresh biomass was recorded immediately after uprooting, and then all the three plant samples were cut into small pieces and mixed properly, and a total of 200 g plant sample were taken for each progeny and then oven dried in 70 °C for 3 days and

**Table 2** Detail of the experiments conducted and traits measured during 2015WS and 2016DS under dry direct seeded conditions

SN	Year/ Season	Date of seeding	No. of Entries	Parents and checks <sup>a</sup>	Observed traits
1	2015WS	June 18, 2015	500 (450 + 50)	NSICRc 222, IR 87707–446-B-B, IR 74371–54–1-1, Vandana/Kali Aus, IR 94225-B-82-B <sup>a</sup> , IR 94226-B-177-B <sup>a</sup> , IR 91648-B-32-B <sup>a</sup> , IR 91648-B-153-B <sup>a</sup> , IR 91648-B-230-B <sup>a</sup>	days to first emergence, days to full emergence, number of nodal roots at 15 DAS, number of nodal roots at 22 DAS, number of nodal roots at 29 DAS, maximum root length (cm) at 15 DAS, maximum root length (cm) at 22 DAS, maximum root length (cm) at 29 DAS, dry shoot weight at 15 DAS (g), dry shoot weight at 22 DAS (g), dry shoot weight at 29 DAS (g), relative growth rate from 15 to 22 DAS, relative growth rate from 22 to 29 DAS, relative growth rate from 15 to 29 DAS, root hair length, root hair density, flag leaf length, flag leaf width, flag leaf area, Flag leaf angle, leaf color chart, chlorophyll content (SPAD), stem diameter, culm diameter, bending strength (kg cm), bending moment (kg cm <sup>2</sup> ), plant height (cm), days to 50% flowering, biomass at 50% flowering (g), vegetative vigor score, number of productive tillers per plant, panicle length (cm), number of filled grains/panicle, 1000 grain weight (g), straw yield (kg ha <sup>-1</sup> ), grain yield (kg ha <sup>-1</sup> ), N uptake (kg ha <sup>-1</sup> ), P uptake (kg ha <sup>-1</sup> ), Fe uptake (kg ha <sup>-1</sup> ), Zn uptake (kg ha <sup>-1</sup> )
2	2016DS	Dec 22, 2015	310 (300 + 10)		days to first emergence, days to full emergence, number of nodal roots at 15 DAS, number of nodal roots at 22 DAS, number of nodal roots at 29 DAS, maximum root length (cm) at 15 DAS, maximum root length (cm) at 22 DAS, maximum root length (cm) at 29 DAS, dry shoot weight at 15 DAS (g), dry shoot weight at 22 DAS (g), dry shoot weight at 29 DAS (g), relative growth rate from 15 to 22 DAS, relative growth rate from 22 to 29 DAS, relative growth rate from 15 to 29 DAS, root hair length, root hair density, flag leaf length, flag leaf width, flag leaf area, Flag leaf Angle, leaf color chart, chlorophyll content (SPAD), stem diameter, culm diameter, bending strength (kg cm), bending moment (kg cm <sup>2</sup> ), plant height (cm), days to 50% flowering, biomass at 50% flowering (g), vegetative vigor score, number of productive tillers per plant, panicle length (cm), number of filled grains/panicle, 1000 grain weight (g), straw yield (kg ha <sup>-1</sup> ), grain yield (kg ha <sup>-1</sup> )

WS wet season, DS Dry season, DAS days after seeding (DAS)

IR 94225-B-82-B (Aus276/3\*IR64 derived progenies with better root traits and grain yield under dry direct seeding conditions [19]; IR 94226-B-177-B (Aus276/3\*MTU1010 derived progenies with better root traits and grain yield under dry direct seeding conditions [19]; IR 91648-B-32-B (Moroberekan/3\* Swarna derived progenies with genetic region for early and uniform germination characteristics [40]; IR 91648-B-153-B and IR 91648-B-230-B (Moroberekan/3\* Swarna derived progenies with genetic region for lodging resistance [40])

then weight for dry plant biomass and nutrient uptake measurements [19]. In 2015WS a total of 60 progenies (30 high yielding and 30 low grain yielding along with the parents) were selected and analyzed for nutrient (N, P, Fe and Zn) uptake at IRRRI Analytical Service Laboratory. The nitrogen estimation was carried out using Kjeldahl digestion method. The plant material was digested with a mixture of K<sub>2</sub>SO<sub>4</sub> (potassium sulphate) and concentrated H<sub>2</sub>SO<sub>4</sub> (sulphuric acid) in presence of catalyst (fine powdered selenium). The NH<sub>3</sub> (ammonia) produced was estimated by colorimetric method using Technicon autoanalyzer. The other nutrients phosphorus (P), Iron (Fe) and Zinc (Zn) were estimated using Nitric/Perchloric Acid digestion method using AIM 500 Digestion Block System.

#### Lodging resistance traits

Randomly three plants per plot were chosen for the lodging resistance traits measurements. Traits related to lodging resistance including stem diameter (SD; mm),

culm diameter (CD; mm), bending strength (BS; kg cm) and bending moment (BM, kg cm<sup>-2</sup>) were recorded. Stem and culm diameter were measured using vernier caliper. Stem strength at the breaking point was measured using the prostrate tester (Daiki Rika Kogyo Co., Tokyo; Additional file 2: Figure S3) [42]. At 20 days after flowering, the main stem of the plant was cut from the ground level and the force was given to the 2<sup>nd</sup> and 3<sup>rd</sup> internode of the stem at the middle (5 cm) of the internode. The displacement in mm was measured as the stem strength at breaking point. The bending ability of internode was measured by bending the stem to point at which the stem break and the scale displacement (mm) due to bending ability was recorded.

#### Plant morphological, grain yield and yield-related traits

Five random plants were taken for recording of plant morphological, grain yield and yield-related traits. Days to 50% flowering (DTF) was recorded when ~ 50% of the plants in a plot showed panicle exertion. Plant height

(PHT), panicle length (PL), flag leaf length (FLL) and flag leaf width (FLW) were measured using ruler in centimeter scale. The number of productive tillers per plant (NPT) were counted manually. The PHT was measured from the ground level to the tip of the highest panicle at the maturity stage. PL was measured from the node of the panicle to the tip of the panicle. The FLL and FLW was measured from the base to tip of flag leaf and at the middle part of the flag leaf, respectively. Flag leaf area (FLA; cm<sup>2</sup>) was calculated according to Palaniswamy and Gomez [43]. Flag leaf angle (FLAngle) was measured using protector keeping stem as a horizontal base. The harvested grain was threshed, cleaned and oven dried for 3 days at 50 °C to 14% moisture content and then the weighing to record grain yield. The filled grains per panicle (FG/P) were counted manually and the 1000 grain weight (1000GW) was recorded in g. For straw yield (SY), the harvested straw was oven dried for 3 days at 70 °C and weighed. The biomass at flowering (BMF) was measured (in g) after harvesting and drying the above ground biomass at 70 °C in oven till there is no change in the dry weight of the plants.

#### DNA isolation, genotyping-by-sequencing and SNP calling

Samples comprised of the five parents, five checks and 300 progenies from the MAGIC population. The fresh leaf tissue samples from six plants per progeny were collected at 40 DAS. To increase the throughput and efficiency coupled with less chances of error, automated leaf sampling and high-throughput DNA extraction using the Brooks' PlantTrak Hx rice leaf tissue sampler and LGC Genomics' oKtopure systems was used. For genotyping by sequencing (GBS) a type II restriction endonuclease *ApeKI* was used for DNA digestion, and the digested DNAs were ligated to the adapter, and then 96-plex library was constructed as per GBS protocol. GBS was carried out using HiSeq2000 100PE platform of Macrogen Inc. (Korea). From the GBS data a total of 2,75,586 SNPs were called from the GBS genotyping. A stringent selection criterion to filter out the SNPs was used including missing percentage, MAF (minor allele frequency) and percent heterozygosity to select the panel of robust SNPs. SNP with call rate 80% and MAF (minor allele frequency) of > 5% (24,306 SNPs) were filtered using Tassel 5. The 24,306 SNPs were used to estimate the genetic relationship, the building of neighbor joining tree and were used for GWAS for emergence, root, grain yield and yield-related traits. To detect and correct for population structure, a PCA was carried out using 24,306 SNP markers.

#### Phenotypic data analysis

Analysis of variance (ANOVA) was computed using PBTools V 1.4.0 (<http://bbi.irri.org/products>). The trial

mean and trait mean for each season/years was computed using mixed model analysis considering replications, and block within replication as random effect and progenies as a fixed effect. The broad-sense heritability was computed using the equation,  $H = \sigma^2_G / (\sigma^2_G + \sigma^2_E / r)$ .

Where H represents the broad sense heritability,  $\sigma^2_G$  represents the genetic variance,  $\sigma^2_E$  the error variance and r the number of replications. Correlation among traits was calculated using function `rcorr()` [in Hmisc package] in R. v.1.1.423.

The best parent for the promising traits was selected and the percent improvement in selected promising breeding progenies over the best parent for each promising trait was calculated as: % improvement = (trait value in selected promising progeny – trait value in best parent / trait value in best parent) \* 100.

#### Population structure, linkage disequilibrium and association analysis

The 300 progenies and five parents included in the present study include the progenies of *indica* and *Aus* parents. The population structure was estimated using STRUCTURE V.2.3.4. Using 24,306 SNPs, a series of models with K value ranging from 1 to 10 was run with a burn-in period to 50,000 and running length to 10,000 to give consistent results overruns. To verify the consistency and accuracy of the results, ten independent runs for each K was performed. The K value with maximum likelihood over the runs was considered as the most probable number of clusters [44]. The genetic structure of the population was also described on Principal components (PC) calculated with R/GAPIT [45] and iteratively added to fixed part of the model, ranging from PC1 to PC10. The distance matrix was calculated using Tassel 5.0 [46], and an unweighted neighbor-joining tree was visualized using FigTree v1.4.2 [47]. The pairwise r<sup>2</sup> values were estimated using Tassel 5.0 and were averaged over the SNPs grouped based on stepwise increasing base-pair distance (0–10, 10–50, 50–500, 500–1000, 1000–1500, 1500–2000, 2000–2500, 2500–3000, 3000–3500, 3500–4000, 4000–4500 and 4500–5000). The average LD over these base-pair distances was used to estimate the linkage disequilibrium (LD) decay in the MAGIC population. GAPIT (Genome Association and Prediction Integrated Tool) was used to conduct genome wide association studies on 2015WS, 2016DS and the combined data over seasons to identify the genomic regions associated with the traits of interest [45].

The allelic effects of the significantly associated markers for root, nutrient uptake, and grain yield traits were determined by representing phenotypic data for the alleles as boxplots and the significant allelic variation for the associated traits was determined to perform Kruskal–Wallis test in “R.”

### Correction of false discovery rate (FDR) and candidate gene prediction

To correct the false positive in genome wide association analysis even keeping the stringent  $p$ -value benchmark, “Bonferroni Correction” the most stringent correction method was used. After the Bonferroni multiple test correction (0.01/24,306; significance level of 1%/total number of marker used in analysis), the calculated threshold value was  $4.1 \times 10^{-7}$ . Only the marker-trait associations (MTA) that surpass the Bonferroni threshold and consistent over seasons for the recorded traits were reported. For the identified significant marker-trait associations, candidate gene prediction was performed within 120-kb region around i.e. 120 kb upstream and 120 kb downstream of the SNPs with significant association signals. Earlier reported QTL that co-localized with the present study SNPs/QTLs, literature searches were performed. Regions covered by SNPs were searched for candidate genes using the MSU v.7 rice genome browser (<http://rice.plantbiology.msu.edu/cgi-bin/gbrowse/rice/#search>) and QTARO database (<http://qtaro.abr.affrc.go.jp>).

## Results and discussion

### Phenotypic variations for targeted traits

A number of seedling establishment, root and leaf morphological, agronomic, grain yield and yield related traits were measured to investigate their role in improving rice adaptation under DDSR condition. A better understanding of root traits enhancing nutrient uptake under DDSR in the framework of breeding strategies is a significant step forward to increase nutrient uptake under DDSR condition. Significant variations were observed for all the selected traits in both the seasons, except for number of filled grains per panicle, number of productive tillers per plant, panicle length and total biomass at 50% flowering (Table 3). The mean grain yield of the population was  $3769 \text{ kg ha}^{-1}$  in 2015WS and  $4472 \text{ kg ha}^{-1}$  in 2016DS. The parents Kali Aus and IR 87707-446-B-B-B showed better performance in term of grain yield and number of nodal roots in both wet and dry seasons, whereas NSICRc 222 and Vandana showed better grain yield performance under dry season (Table 3). Similarly, NSICRc 222 and NSICRc 192 were having higher root hair length and density and flag leaf area compared to other parents. In term of SPAD and LCC, IR 87707-446-B-B-B and Vandana showed better performance. The trend of change of LCC and SPAD value across the progenies was almost similar indicating LCC (which is cheap to buy for farmers) is a good alternative to SPAD (which is expensive for farmers to buy) to decide on the time and dose of fertilizer application under DDSR. The greater radiations during grain filling stage in dry season contributing to the higher grain yield of dry season

experiment compared to wet season experiment. The 1000 grain weight was found to be higher for IR 87707-446-B-B-B and NSICRc 192 across seasons. Transgressive segregants were observed for different seedling establishment, root morphological, plant morphological, nutrient uptake, grain yield and yield contributing traits. The traits such as SY and GY (except 2016DS) showed normal distribution. Positive skewness was observed for DTFirst emergence, DTFull emergence, NR, RHL, RHD, BS, FLAngle, SPAD, PHT, DTF and N, P, Fe, Zn uptake. The traits FLA, CD and SD exhibited negative skewness.

The grain yield was significantly and positively correlated with seedling establishment traits (vegetative vigor, days to first and full emergence), root morphological and nutrient uptake related traits (nodal root, root hair length, density, LCC, SPAD) and grain yield attributing traits (number of productive tillers per plant, number of filled grains/panicle, 1000 grain weight) in 2015WS (Fig. 2a), 2016DS (Fig. 2b) and combined seasons (Fig. 2c) analysis.

Strong seedling vigor and early and uniform emergence are desirable traits for enhancing crop establishment and weed competitiveness under DDSR. Early vigor and uniform emergence are complex traits which are influenced by different environmental and soil factors. Across the seasons, significant variability was observed among the progenies for DTFirst and DTFull emergence. The existing variations could be exploited in identifying the favourable alleles to be further used in marker-assisted introgression program. In the present study, direct significant positive correlation of grain yield with seedling establishment traits and grain yield attributing traits indicated the complexity of the relationship of these traits from seedling to reproductive stage in improving grain yield under DDSR. Investigating the genetic basis and relatedness of these traits and using them in marker-assisted breeding program is the urgent need of DDSR varietal development program.

The nutrient uptake (N, P, K and Zn) was significantly and positively correlated with nodal root, root length, root hair density, LCC, SPAD, number of productive tillers per plant, number of filled grains/panicle and grain yield (Fig. 2d). The significant positive correlation of nutrient uptake with grain yield and root morphological traits indicated the role of root traits in water-nutrient uptake and their effect in improving grain yield under DDSR. The significant positive correlation of a number of nodal roots at 15 DAS (seedling stage) with nitrogen, phosphorus, iron and zinc and at later stage 22 DAS with zinc uptake and at 29 DAS with nitrogen and phosphorus uptake (Fig. 2) indicated the importance of nodal root at each growth stage. Across the seasons, although the direction of correlation (whether positive or negative) for the seedling establishment, root and grain yield attributing traits such as DTFull emergence, nodal root,

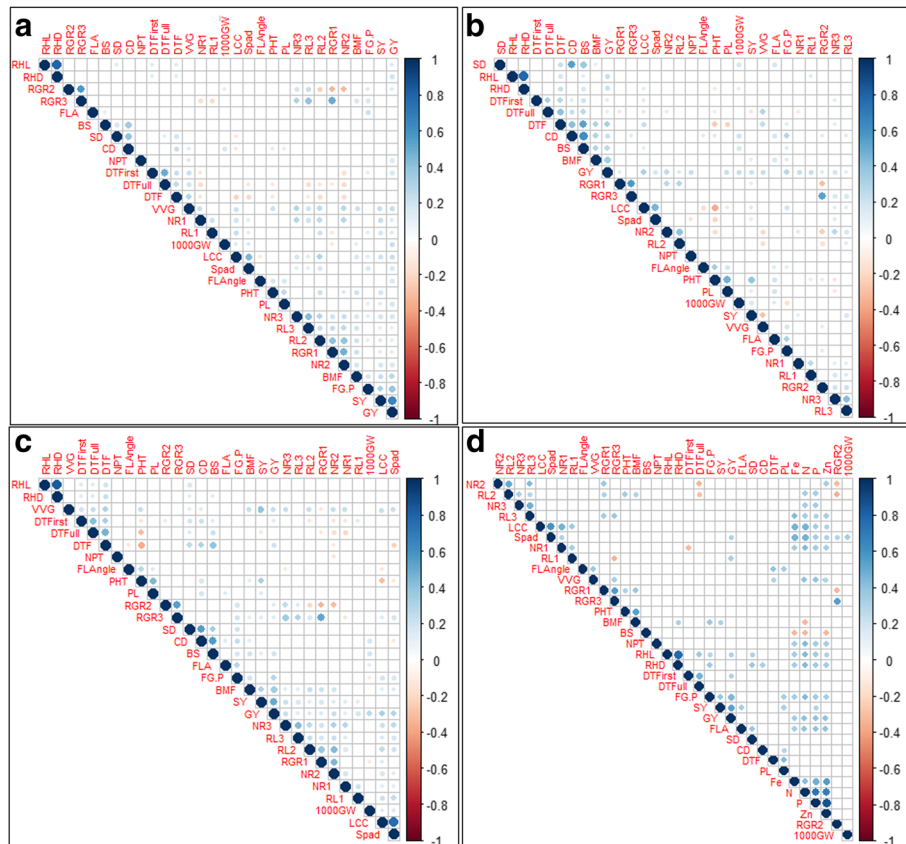
**Table 3** Mean of the MAGIC population and five parents for different traits in 2015WS, 2016DS and combined seasons under the dry direct seeded cultivation conditions

Traits	NR1	NR2	NR3	RHL	RHD	LCC	SPAD	FLW	FLA	FLAngle	DTFfirst	SD	CD	BS	BM	PHT	DTF	BMF	WG	NPT	PL	FG/1000GW	SY	GY			
Population mean	10	13	24	2	2	2.8	37.5	26.9	1.4	28.2	38.3	5	7	5.0	4.8	0.3	1.7	112	88	8245	3	10	25.4	107	25.6	5541	3769
	8	22	30	2	2	3.0	37.9	26.6	1.2	24.1	44.2	6	9	6.1	4.5	0.7	3.6	99	77	6462	4	9	23.0	116	27.1	4668	4472
Combined	9	18	27	1	1	2.9	37.9	26.2	1.1	26.2	41.8	5	8	5.6	4.6	0.5	2.6	106	82	7344	4	10	24.2	112	26.4	5086	4059
NSICRc 222	10	12	30	2	2	2.8	36.4	29.5	1.3	28.0	38.3	4	6	4.7	4.6	0.4	2.2	98	97	8209	3	10	25.2	121	24.6	4210	3382
	11	21	22	2	2	3.2	38.8	27.6	1.1	22.9	43.5	5	10	5.0	4.1	0.8	4.0	93	81	6583	4	11	23.6	152	24.5	3866	4952
Combined	10	16	26	2	2	3.0	37.6	28.8	1.2	25.6	40.9	5	8	4.8	4.3	0.6	3.1	96	89	7335	4	10	24.4	137	24.5	4038	4199
IR 87707-446-B-B	11	16	28	1	1	3.0	38.4	24.8	1.3	24.1	40.0	5	6	4.9	4.6	0.3	1.7	113	85	8833	3	10	26.3	100	28.0	6319	3954
	8	26	27	2	1	2.9	39.1	25.5	1.1	21.7	33.5	5	7	6.3	3.9	0.8	3.9	98	73	5778	4	12	25.5	100	30.2	6346	4474
Combined	10	21	27	1	1	3.0	38.6	24.8	1.1	22.9	36.7	5	7	5.6	4.2	0.6	2.8	105	79	7750	3	11	25.9	100	29.1	6333	4157
NSICRc 192	10	12	21	2	2	2.6	35.5	25.7	1.4	27.0	31.7	5	7	4.5	4.7	0.3	1.4	110	86	6389	4	9	25.3	103	24.3	3709	2352
	7	19	24	2	2	2.9	36.9	32.7	1.3	30.8	45.0	6	10	6.0	4.6	0.3	1.5	102	71	7715	5	6	24.4	126	28.2	3468	3944
Combined	9	15	22	2	2	2.8	36.2	29.4	1.3	29.1	38.2	5	8	5.3	4.6	0.3	1.4	106	79	7478	5	8	24.8	114	26.2	3589	3091
Yandana	11	11	23	1	1	2.6	37.5	26.9	1.4	27.7	28.0	5	7	4.0	5.1	0.3	1.7	107	85	8306	5	9	25.8	124	22.8	3868	2950
	11	21	21	1	1	3.0	38.0	23.7	1.1	19.2	36.5	5	8	6.0	4.1	0.1	0.7	96	71	4346	4	9	23.4	125	24.6	4248	4329
Combined	11	16	22	1	1	2.8	37.7	25.6	1.2	23.5	32.1	5	7	5.0	4.6	0.2	1.2	101	78	6439	4	9	24.6	124	23.7	4058	3575
Kali Aus	11	14	29	1	1	2.2	33.2	24.8	1.3	23.6	42.9	4	6	3.8	4.0	0.1	0.5	111	76	10530	1	11	22.0	82	23.9	5010	4532
	10	24	26	1	1	2.5	34.3	21.4	1.0	16.8	23.5	5	7	4.0	3.1	0.1	0.5	85	67	4398	3	12	18.1	64	26.8	4618	4160
Combined	10	19	27	1	1	2.3	33.7	22.8	1.2	19.9	33.2	4	7	3.9	3.5	0.1	0.5	98	71	7184	2	11	20.0	73	25.3	4814	4301
CV	16.2	16.7	17.5	31.8	31.5	9.0	9.1	12.8	15.5	13.1	22.4	8.5	10.8	11	8.7	35.0	32.0	8.3	54	19.4	24	15.8	5.6	16.2	8.0	18	18.7
P (F-test)	**	**	*	*	**	**	*	NS	*	*	*	*	*	*	*	*	***	***	NS	*	NS	NS	***	*	*		
	**	NS	*	*	*	***	*	**	**	***	**	***	***	***	***	***	***	**	**	***	***	***	***	***	***		
Heritability	0.63	0.58	0.43	0.19	0.25	0.59	0.45	0.21	0.22	0.20	0.25	0.10	0.12	0.20	0.30	0.20	0.20	0.58	0.80	0.18	0.37	0.01	0.30	0.00	0.79	0.55	0.32
	0.12	0.17	0.20	0.20	0.12	0.37	0.19	0.54	0.52	0.44	0.47	0.14	0.31	0.40	0.60	0.50	0.50	0.82	0.91	0.39	0.29	0.44	0.43	0.31	0.40	0.49	0.58

NR1 number of nodal roots at 15 DAS, NR2 number of nodal roots at 22 DAS, NR3 number of nodal roots at 29 DAS, RHL root hair length, RHD root hair density, LCC leaf color chart, SPAD chlorophyll content, FLL flag leaf length (cm), FLW flag leaf width (cm), FLA flag leaf area (cm<sup>2</sup>), FLAngle flag leaf angle, DTFfirst days to first emergence (days), DTFfull days to full emergence (days), SD stem diameter (mm), CD culm diameter (mm), BS bending strength (kg cm), BM bending moment (kg cm<sup>2</sup>), PHT plant height (cm), DTF days to 50% flowering (days), BMF biomass at 50% flowering (g), VVG vegetative vigor score, NPT number of productive tillers per plant, PL panicle length (cm), NFG/P number of filled grains/panicle, 1000GW 1000 grain weight (g), SY straw yield (kg ha<sup>-1</sup>), GY grain yield (kg ha<sup>-1</sup>)

NS non-significant, \*significant at < 0.05 level, \*\*significant at < 0.01 level, \*\*\*significant at < 0.001 level





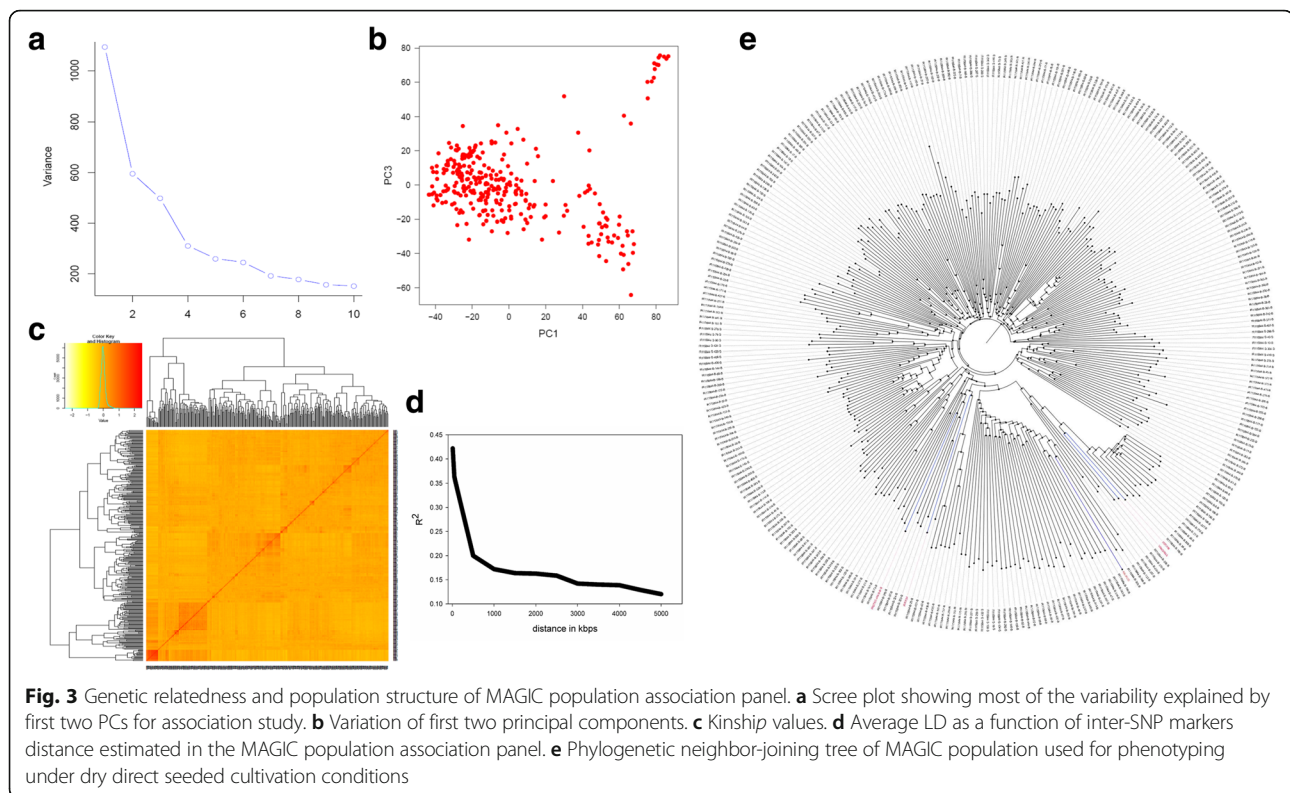
**Fig. 2** Phenotype-Phenotype correlation plot of different seedling establishment, root, grain and grain yield contributing traits considering whole population; **a** in 2015WS. **b** in 2016DS. **c** in combined seasons. **d** different seedling establishment, root, nutrient uptake, grain and grain yield contributing traits considering 60 progenies (30 high yielding and 30 low grain yielding used for nutrient uptake analysis). The blue color indicates the significant positive correlation and red color indicates the significant negative correlation among different traits. *RGR1*: relative growth rate from 22 to 15 DAS, *RGR2*: relative growth rate from 29 to 22 DAS, *RGR3*: relative growth rate from 29 to 22 DAS, *NR1*: number of nodal roots at 15 DAS, *NR2*: number of nodal roots at 22 DAS, *NR3*: number of nodal roots at 29 DAS, *RL1*: maximum root length (cm) at 15 DAS, *RL2*: maximum root length (cm) at 22 DAS, *RL3*: maximum root length (cm) at 29 DAS, *RHL*: root hair length, *RHD*: root hair density, *LCC*: leaf color chart, *SPAD*: chlorophyll content, *FL*: flag leaf length, *FLW*: flag leaf width, *FLA*: flag leaf area, *FLAngle*: Flag leaf Angle, *DTFfirst*: days to first emergence, *DTFull*: days to full emergence, *SD*: stem diameter, *CD*: culm diameter, *BS*: bending strength (kg cm), *BM*: bending moment (kg cm<sup>2</sup>), *PHT*: plant height (cm), *DTF*: days to 50% flowering (days), *BMF*: biomass at 50% flowering (g), *VVG*: vegetative vigor score, *NPT*: number of productive tillers per plant, *PL*: panicle length (cm), *NFG/P*: number of filled grains/panicle, *1000GW*: 1000 grain weight (g), *SY*: straw yield (kg ha<sup>-1</sup>), *GY*: grain yield (kg ha<sup>-1</sup>), *N*: nitrogen, *P*: phosphorus, *Fe*: iron, *Zn*: zinc

maximum root length, *LCC*, *SPAD*, *FLAngle*, *CD*, *DTF*, *NPT* and *SY* with *GY* was same but the significance level was different. To investigate the underlying relationship among the proxy traits for high yield and better water-nutrient uptake under DDSR, the traits data were also analyzed with PCA. This partitioned the total variations into correlated (*RGR*, *NR*, *RHD*, *LCC*, *BS*, *SY*) and inversely correlated traits (*DTFfirst*, *DTFull* and *DTF*) with *GY* (Additional file 2: Figure S4). Some traits such as *RHD*, *RHL*, *LCC*, *SD*, *CD*, *BS*, *PHT* and *FLAngle* showed the effect of seasonal variability. This highlighted the role and phenotypic plasticity behaviour of different traits in increasing yield across seasons. Therefore, a better understanding of the relationship between root morphological traits at different time points, across different

seasons and at different developmental stages with water-nutrient uptake is likely to provide a novel dimension in selecting traits and high-yielding varieties needed for DDSR. The correlation among the traits across seasons is shown in Additional file 1: Table S1.

#### Population structure and linkage disequilibrium (LD)

Population structure and LD decay were estimated using the genetic structure of the 300 progenies from MAGIC population and 5 parents using 24,306 SNPs distributed across 12 rice chromosomes. The scree plot produced from GAPIT showed that first four principal components were informative, and then there was a gradual decrease (Fig. 3a) until the tenth PC component. The PC1 explained 32.7%, PC2 explained 15.7%, PC3 explained



13.2% and PC4 explained 8.5% of total variance (Fig. 3b). All the progenies were divided into two distinct major groups and further subdivided into subgroups (Fig. 3c). The divergent *aus* and *indica* subpopulations of rice are adapted to different ecologies and geographies, and also harbor different traits of interest and alleles. The *aus* subpopulation is of interest as it has important source of alleles for drought tolerance and root traits while *indica* subpopulation harbors huge genetic variations. The kinship heatmap showed that most of the kinship value concentrated at \*0.0 level indicating a very weak relatedness in the MAGIC population derived GWAS panel (Fig. 3c). Pairwise linkage disequilibrium ( $r^2$ ) was calculated between all 24,306 markers. The average value of  $r^2$  as a function of the inter-marker distance was used for LD decay calculation. The average  $r^2$  for close markers of 5 kbs starts at 0.4, and the LD ( $r^2$ ) dropped to half of its maximum value (0.2) at around 500 kb (Fig. 3d). The phylogenetic structure of the MAGIC population panel was illustrated using unweighted NJ tree (Fig. 3e).

### Genome wide association study

To take advantage of identified marker-trait associations directly in MAS (marker-assisted selection), GWAS was performed directly on the MAGIC population. The high phenotypic variability existing in the MAGIC population coupled with high marker density across all chromosomes provided a strong base to the whole genome

association mapping. About 25 and 12.5% of the genotypes in  $F_3$  and  $F_4$  populations were heterozygous. A total of 2,75,586 SNPs were called from the GBS data. After filtering SNP with call rate 80% and MAF (minor allele frequency) of  $> 5\%$ , a total of 24,306 polymorphic SNPs were retained for further GWAS. The information's on  $p$ -values, FDR, SNP, SNP position and major and minor alleles are shown in Table 4. The Manhattan plots depicting  $-\log(p\text{-values})$  and Q-Q plots (quantile-quantile) showing the expected vs. observed  $p$ -values for the SNP-based progeny-trait of interest associations are reported in Fig. 4 (seedling establishment traits and plant morphological traits), Fig. 5 (root morphological traits and nutrient uptake) and Fig. 6 (agronomic traits, grain yield, and lodging resistance traits).

### Significant MTAs for molecular breeding for DDSR

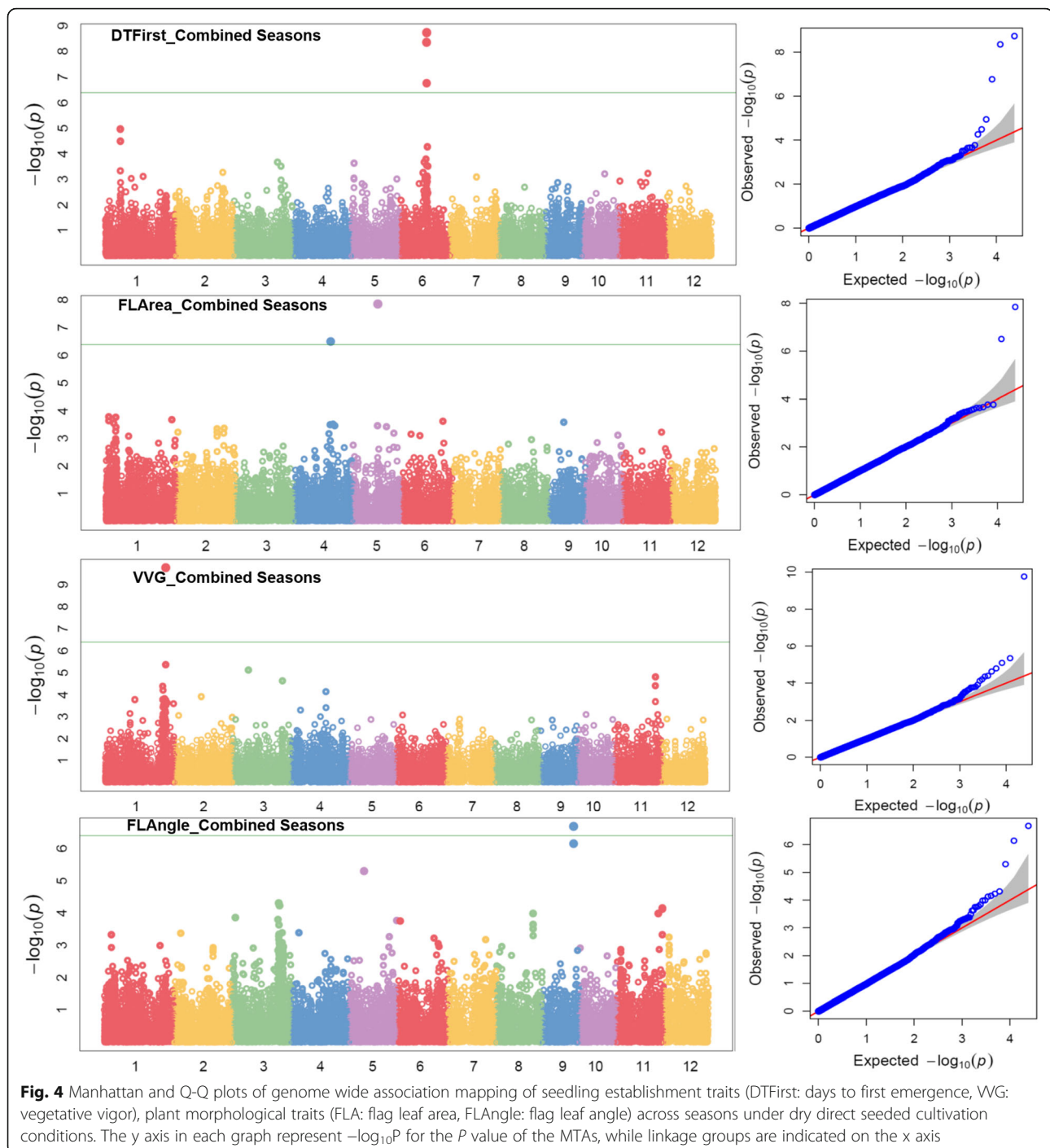
The main objective of the present study was to identify the significant MTAs for the traits related to improving grain yield and adaptability of progenies under DDSR. A total of 37 significant trait-SNP associations were identified for 20 traits. The percent phenotypic variance (PV) explained by the SNP ranged from 9 to 92% for all the traits measured in the present study. The FDR ranged from 0.264 to  $3.69 \times 10^{-4}$ , 0.0330 to  $1.25 \times 10^{-4}$ , 0.0534 to  $4.60 \times 10^{-6}$  was observed in 2015WS, 2016DS and combined seasons analysis respectively (Table 4). Among the 37-significant marker-trait associations, 15 were located in

**Table 4** Identified significant SNPs-traits associations in genome wide study on the MAGIC population

Traits	SNP	Chr	Position	QTL span (kb)	2015WS			2016DS			Source: <a href="http://qtaro.abr.affrc.go.jp">http://qtaro.abr.affrc.go.jp</a>	
					p-value	R <sup>2</sup> (%)	FDR	p-value	R <sup>2</sup> (%)	FDR	Gene	QTLs
NR3	S4_31728342	4	31728342		2.06 × 10 <sup>-7</sup>	9	0.0050	2.28 × 10 <sup>-7</sup>	16	0.00552	<i>nal1(nal5)</i> [48]	<i>rfw4a</i> [49], Root thickness [50, 51], Rooting depth [50]
RHL	S5_15470847	5	15470847	0.033 <sup>a</sup>	1.99 × 10 <sup>-7</sup>	11	0.0048	5.20 × 10 <sup>-8</sup>	12	0.00126	<i>OsIPT3</i> [52]; <i>OsEXPA3</i> [53]	
	S5_15470880	5	15470880		4.31 × 10 <sup>-6</sup>	9	0.0523	6.79 × 10 <sup>-7</sup>	10	0.00823		
RHD	S5_15470880	5	15470880		4.34 × 10 <sup>-6</sup>	12	0.0603	2.04 × 10 <sup>-7</sup>	11	0.00495	<i>OsIPT3</i> [52]; <i>OsEXPA3</i> [53]	
FLA	S5_15133031	5	15133031		2.88 × 10 <sup>-8</sup>	19	0.0007	1.50 × 10 <sup>-7</sup>	18	0.00357		
	S4_21832119	4	21832119		4.75 × 10 <sup>-6</sup>	16	0.0575	2.95 × 10 <sup>-7</sup>	18	0.00357	<i>tdt1</i> [54]	
FLAngle	S9_19178976	9	19178976		1.82 × 10 <sup>-7</sup>	12	0.0044	2.99 × 10 <sup>-7</sup>	13	0.00725	<i>TAC1</i> [55]	<i>Ta1</i> [56], <i>Ta</i> [57]
DTFirst	S6_16444037	6	16444037	0.045 <sup>a</sup>	2.04 × 10 <sup>-7</sup>	18	0.0032	3.40 × 10 <sup>-7</sup>	19	0.00824		<i>qGP-6</i> [58]
	S6_16444038	6	16444038		2.62 × 10 <sup>-7</sup>	18	0.0032	1.00 × 10 <sup>-6</sup>	19	0.01212		
	S6_16444082	6	16444082									
DTFull	S11_24806601	11	24806601	0.036 <sup>a</sup>	1.67 × 10 <sup>-7</sup>	15	0.0040					<i>qGP-11</i> , <i>qGI-11</i> [58], <i>ylf11.1</i> , <i>gpl11.1</i> , <i>gw11.1</i> [59]
	S11_24806565	11	24806565					2.47 × 10 <sup>-7</sup>	20	0.00600		
	S11_24806596	11	24806596		3.41 × 10 <sup>-7</sup>	15	0.0041	2.84 × 10 <sup>-6</sup>	18	0.03302		
Spad	S2_16191048	2	16191048	177	2.43 × 10 <sup>-7</sup>	14	0.0059	5.18 × 10 <sup>-9</sup>	18	0.00013	<i>OsWRKY42</i> [60]	<i>Ghd7</i> [61]
	S2_16013833	2	16013833					1.26 × 10 <sup>-6</sup>	14	0.01523		
BS	S3_21737519	3	21737519		9.39 × 10 <sup>-8</sup>	12	0.0023	2.76 × 10 <sup>-7</sup>	19	0.00669		
SD	S2_31078747	2	31078747		3.69 × 10 <sup>-7</sup>	12	0.0089	2.47 × 10 <sup>-7</sup>	17	0.00599	<i>bc3</i> [62]	
CD	S2_30984762	2	30984762	93.99	9.97 × 10 <sup>-7</sup>	13	0.0024	2.83 × 10 <sup>-7</sup>	27	0.00686	<i>bc3</i> [62]	
	S2_30987475	2	30987475		1.03 × 10 <sup>-6</sup>	12	0.0125					
	S2_31078747	2	31078747		1.26 × 10 <sup>-7</sup>	10	0.1020					
PHT	S11_17805610	11	17805610		1.88 × 10 <sup>-7</sup>	26	0.0035	1.77 × 10 <sup>-7</sup>	29	0.00260		
	S1_38481437	1	38481437		2.87 × 10 <sup>-7</sup>	26	0.0035	2.15 × 10 <sup>-7</sup>	29	0.00260	<i>Sd1</i> [63], <i>qDTY<sub>1.1</sub></i> [64]	
GY	S11_17412133	11	17412133	0.005 <sup>a</sup>	2.12 × 10 <sup>-7</sup>	26	0.0051	3.02 × 10 <sup>-7</sup>	26	0.00073		<i>ylf11.1</i> , <i>gpl11.1</i> , <i>gw11.1</i> [59]
	S11_17412134	11	17412134		4.11 × 10 <sup>-6</sup>	24	0.0498	1.08 × 10 <sup>-6</sup>	24	0.00869		
	S11_17412139	11	17412139		6.80 × 10 <sup>-6</sup>	24	0.0549	2.91 × 10 <sup>-7</sup>	24	0.00352		
SY	S11_15708717	11	15708717		3.15 × 10 <sup>-7</sup>	17	0.0076	2.20 × 10 <sup>-7</sup>	15	0.00534		
DTF	S11_17316419	11	17316419		7.71 × 10 <sup>-8</sup>	24	0.0019	1.87 × 10 <sup>-8</sup>	30	0.00045		
VVG	S1_37653811	1	37653811	14 <sup>a</sup>	1.52 × 10 <sup>-8</sup>	17	0.0004	2.23 × 10 <sup>-8</sup>	15	0.00054	<i>Lax</i> [65], <i>moc</i> [66]	
	S1_37639734	1	37639734		1.70 × 10 <sup>-7</sup>	15	0.0021					
	S11_25462225	11	25462225					2.68 × 10 <sup>-7</sup>	13	0.00325		
Fe uptake	S2_29221003	2	29221003	0.012 <sup>a</sup>	3.49 × 10 <sup>-7</sup>	86	0.0083				<i>OsYSL15</i> [67], <i>OsCK1</i> [68], <i>OsGPX3</i> [69], <i>MAIF1</i> [70]	
	S2_29221015	2	29221015		6.84 × 10 <sup>-7</sup>	81	0.0083					
N uptake	S5_14987295	5	14987295		3.43 × 10 <sup>-7</sup>	90	0.0083				<i>OsIPT3</i> [52]	
	S6_30887442	6	30887442		9.82 × 10 <sup>-6</sup>	72	0.1190				<i>OsPTR9</i> [71]	
P uptake	S5_14987295	5	14987295		3.36 × 10 <sup>-7</sup>	92	0.0081				<i>OsIPT3</i> [52]	
	S6_27868961	6	27868961	3018	7.64 × 10 <sup>-5</sup>	71	0.2644				<i>OsPTR9</i> [71]	
	S6_30887442	6	30887442		6.45 × 10 <sup>-6</sup>	80	0.0781					
Zn uptake	S7_26042045	7	26042045		3.29 × 10 <sup>-7</sup>	90	0.0080				<i>OsNAS3</i> [72], <i>aldolase</i> 7-3 [74] [73]	

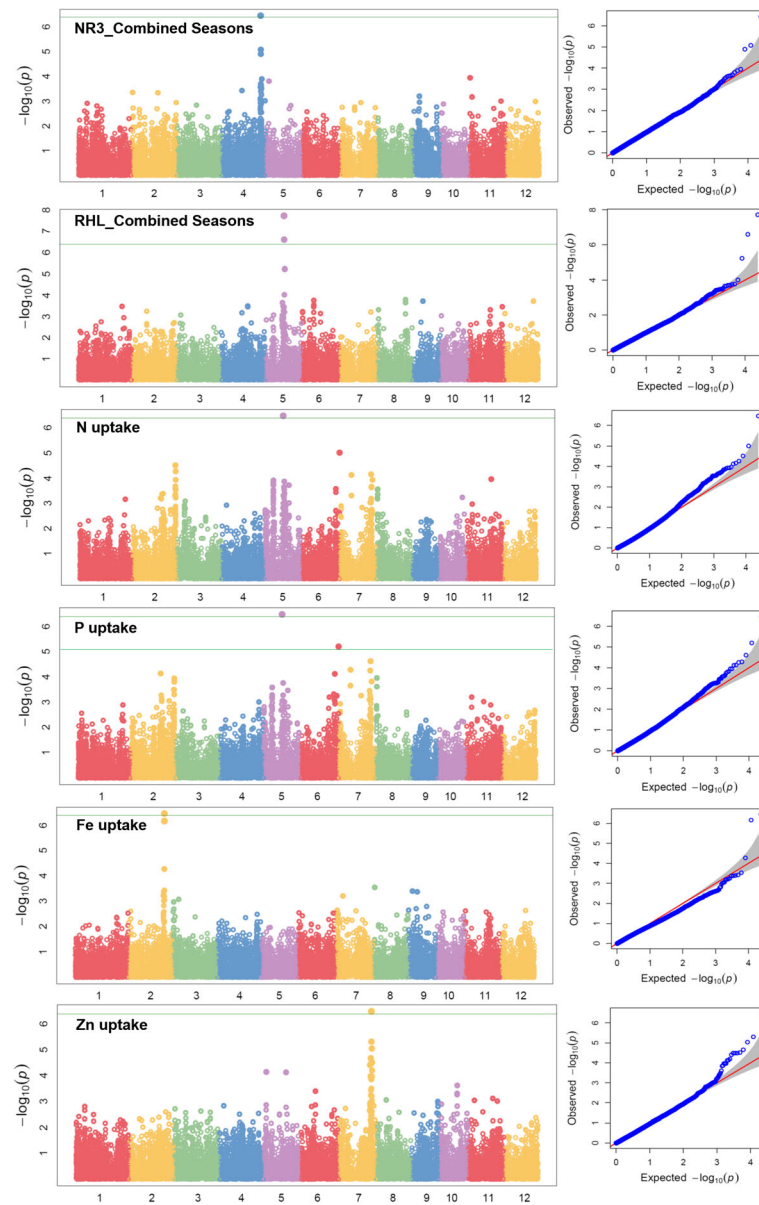
NR3 number of nodal roots at 29 DAS, RHL root hair length, RHD root hair density, FLA flag leaf area, FLAngle Flag leaf angle, DTFirst days to first emergence, DTFull days to full emergence, SPAD chlorophyll content, BS bending strength, SD stem diameter, CD culm diameter, PHT plant height, GY grain yield, SY straw yield, DTF days to 50% flowering, VVG vegetative vigor, Fe uptake iron uptake, N uptake nitrogen uptake, P uptake phosphorus uptake, Zn uptake zinc uptake, DS dry season, WS wet season, R<sup>2</sup> percent phenotypic variance (PV) explained by SNPs, FDR false discovery rate

<sup>a</sup>The associated SNPs with very small interval (≤14 kb) can be considered as the same locus



the proximity of earlier identified candidate genes (<http://qtaro.abr.affrc.go.jp>) (Additional file 1: Table S2). The SNP-trait association with lowest p-values were reported for S2\_16191048 on chromosome 2 for SPAD (p-value =  $5.18 \times 10^{-9}$  in 2016DS and  $1.90 \times 10^{-10}$  in combined seasons). A total of 12 SNPs reported being associated with root morphological and nutrient uptake traits whereas 5 SNPs reported to be associated with grain yield and yield

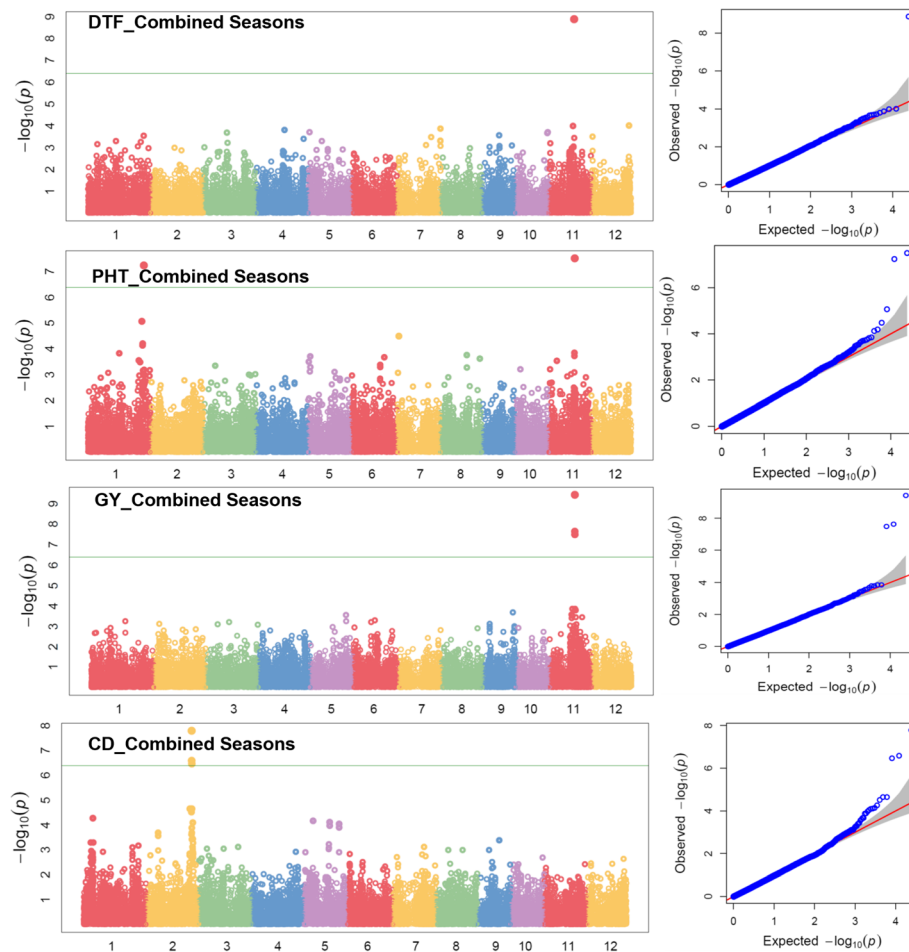
contributing traits. Five SNPs observed to be associated with morphological traits (FLA, FLAngle, PHT). The plant height related SNP S1\_38481437 on chromosome 1 colocalized with rice semi-dwarfing gene (*Sd1*; [63, 64] which encodes a mutant enzyme Gibberellin 20-Oxidase, involved in the synthesis of gibberellin and QTL *qPHT<sub>1.1</sub>* [19]. Similarly, five SNPs reported to be significantly associated with lodging resistance traits (BS, SD, CD) and nine



**Fig. 5** Manhattan and Q-Q plots of genome wide association mapping of root traits (NR3: number of nodal root at 29 days after seeding, RHL: root hair length) across seasons and nutrient uptake (N: nitrogen, P: phosphorus, Fe: iron, Zn: zinc) under direct seeded cultivation conditions. The y axis in each graph represent  $-\log_{10}(p)$  for the P value of the MTAs, while linkage groups are indicated on the x axis. Note: Similar SNPs were detected in 2015WS and 2016DS

SNPs with seedling establishment traits (DTFirst, DTFull, VVG). S2\_31078747 and S2\_30984762 on chromosome 2 significantly associated with stem and culm diameter respectively, found to be colocated with Rice BRITTLE CULM 3 (*BC3*) gene which is known to be involved in secondary cell wall synthesis [62]. A significant association signal associated with vegetative vigor was detected for 14 kb region span between SNPs S1\_37639734 and S1\_37653811. This region was located in proximity to *lax* [65] and *moc2* [66] candidate genes controlling shoot branching and tiller growth respectively.

The SNP S2\_31078747 (SD, CD), S5\_14987295 (N, P uptake) and S5\_15470880 (RHL, RHD) observed to be significantly associated with more than one trait. For SNPs, S5\_15470847 and S5\_15470880 for root hair length and root hair density the colocalization was found with genes *OsIPT3* [52] and *OsEXPA3* [53] which were reported to be tightly linked with the root growth in rice. *OsEXPA3* gene reported to be required for the development of primary root length, lateral root density, root vascular bundle cell length and growth in rice. In addition, these identified SNPs also located in the QTL



**Fig. 6** Manhattan and Q-Q plots of genome wide association mapping of agronomic traits (DTF: days to 50% flowering, PHT: plant height, GY: grain yield) and lodging resistance traits (CD: culm diameter) across seasons under direct seeded cultivation conditions. The y axis in each graph represent  $-\log_{10}P$  for the P value of the MTAs, while linkage groups are indicated on the x axis

region associated with root hair density as reported by Sandhu et al. [19]. Three SNPs S11\_17412133, S11\_17412134 and S11\_17412139 on chromosome 11 significantly associated with grain yield located in the previously identified QTLs (*yld11.1*, *gpl11.1*, *gw11.1*, 17246592–23651853 bp) region. This region was reported to play an important role in improving grain yield in an *Oryza sativa* × *Oryza rufipogon* BC<sub>2</sub>F<sub>2</sub> population under upland conditions [59].

A 0.483 Mb region on chromosome 5 found to be associated with N, P uptake, FLA, RHL and RHD and 0.489 Mb region on chromosome 11 with DTF, PHT, and grain yield. A 0.655 Mb region on chromosome 11 reported being associated with seedling establishment traits (DTFull and VVG). For most of the traits like DTFirst, DTFull, CD, GY and VVG, the identified significant multiple SNPs which were present in the full LD region on the same chromosome were having almost the same level of significance across seasons. Some SNPs

associated with more than one trait such as S5\_14987295 (N, P uptake), and S5\_15470880 (RHL, RHD) were having the same level of significance in 2015WS, 2016DS and combined seasons. The collocation of SNPs related to nutrient uptake and root traits further confirmed by the significant positive correlation of root traits with nutrient uptake. The identification of progenies carrying multiple superior haplotype associated with various collocated traits would significantly aid to the development of rice varieties adapted to DDSR. Introgression of superior haplotypes that are responsible for improving grain yield and water-nutrient uptake under DDSR using haplotype-based breeding may open avenues for designing next generation DDSR adapted rice varieties.

The identified significant marker-trait associations on the same chromosome within the 500 kb region, where the LD decays half of its maximum value were assigned as putative QTLs. The associated SNPs with very small

interval ( $\leq 14$  kb) can be considered as the same locus. The putative QTLs for RHL spanning 0.033 kb region on chromosome 5, for DTFull spanning 0.036 kb and for GY spanning 0.005 kb on chromosome 11, for SPAD spanning 177 kb, and for Fe uptake spanning 0.012 kb on chromosome 2, for VVG spanning 14 kb region on chromosome 1, and for DTFirst spanning 0.045 kb (Table 4).

For the number of nodal roots at 29 DAS on chromosome 4: S4\_31728342,  $\sim 115$  kb upstream the positional match was identified as *nal1(nal5)* gene, NARROW LEAF1 which regulates leaf and adventitious root development in rice [48]. QTLs for root fresh weight, root thickness [48, 50] in upstream region and for rooting depth [51] in the downstream region has been reported. The *p*-values of significant allelic variation for the number of nodal roots at 29DAS were  $5.71 \times 10^{-5}$ ,  $7.13 \times 10^{-6}$  and  $6.267 \times 10^{-6}$  in 2015WS, 2016DS and combined season analysis.

The *p*-values of significant variations for all three significant SNPs associated with grain yield QTL ranged from  $3.125 \times 10^{-5}$  to  $8.287 \times 10^{-8}$  across seasons. The *p*-values representing allelic variation for nutrient uptake were 0.01184 (for S6\_30887442), 0.04321 (for S6\_30887442) and 0.02327 (for S5\_14987295) for P uptake, 0.02449 (S5\_14987295) for N uptake and 0.001039 (S7\_26042045) for Zn uptake. Two SNPs S2\_29221003 and S2\_29221015 on chromosome 2 showed significant associations with iron (Fe) uptake under direct seeded cultivation conditions. Interestingly, the genes *OsYSL15*; a root tissue expressed iron-regulated gene for iron uptake at seedling development stage [67], *OsCKII*; a rice casein kinase I gene associated with root development [68], *OsGPX3*; mitochondrial glutathione peroxidase *GPX3* essential in root-shoot development) [69], and *MAIFI*; F-box protein gene promotes root growth in rice [70] reported to be colonized with the iron uptake gene mapped in the present study. In the present study, SNP S5\_14987295 on chromosome 5 associated with both nitrogen and phosphorus uptake was identified to be collocated with the gene *OsIPT3* which was involved in cytokinin biosynthesis [52] and QTL *qP<sub>5.2</sub>*, *qPU<sub>5.2</sub>* [19]. The zinc uptake linked SNP S7\_26042045 on chromosome 7 reported to be located in the QTL region associated with root morphology and distribution in differential water-regime under upland conditions [74]. In addition, this SNP was reported to be collocated with *qZn<sub>7.1</sub>*; the QTL detected for grain zinc concentration in a rice MAGIC plus population [75] and with QTL for grain breadth in an *indica* MAGIC population [76]. The collocation of QTLs and positive correlation between grain Zn and grain width [75] indicated the importance of grain dimensional traits during selection process.

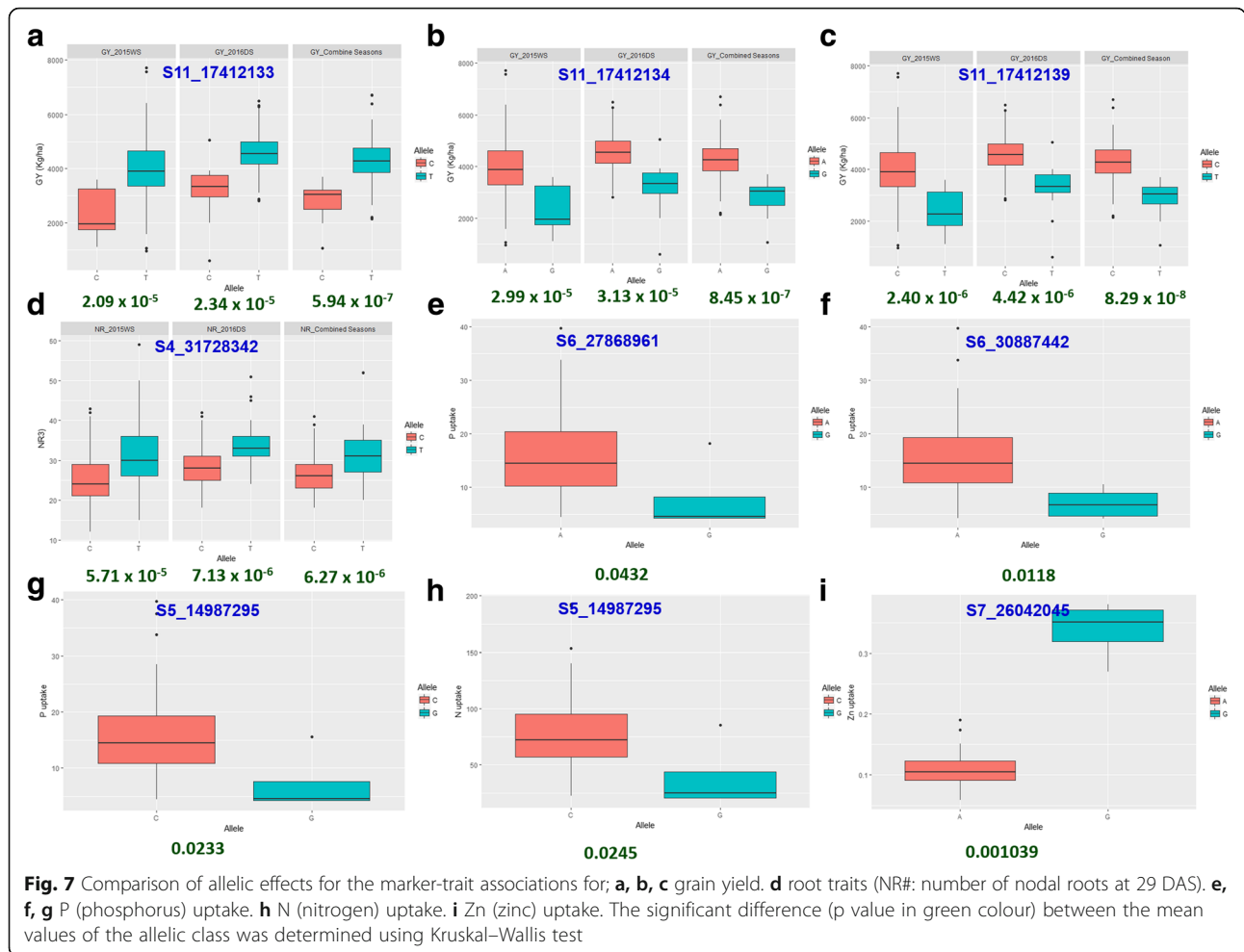
The allelic effects of the significantly associated markers for root, nutrient uptake and grain yield traits are shown in Fig. 7. The parental allele contributing for the increased grain yield under DDSR were coming from IR 87707–446-B-B-B and Kali Aus parents. The parental allele contributing for increase in nodal roots number and Fe uptake was coming from Kali Aus, for N and P uptake from IR 87707–446-B-B-B and for Zn uptake coming from Vandana.

To identify the candidate genes underlying the significant marker-trait association/putative QTLs MSU v.7 rice genome browser (<http://rice.plantbiology.msu.edu/cgi-bin/gbrowse/rice/#search>) and the existing literature were searched. The identified candidate genes were in the vicinity of the reported SNPs/putative QTLs in the present study which warrant further investigation and validation. The detailed description of the candidate genes is presented in Additional file 1: Table S2. The LD decays half of its maximum value at 500 kb in the present study and the candidate genes were searched within 120-kb region around, indicating the SNPs have strong LD within the ORF. All these identified significant MTAs and identified the breeding progenies with favourable alleles combinations can be deployed after validation for improving grain yield and adaptability through molecular breeding.

#### Performance of selected promising progenies

DDSR technology has huge potential to save water, labor and energy with profitable results along with eco-friendly characteristics avoiding all the penalties entailed with the puddled transplanting system. DDSR offers a choice of rice establishment methods and water requirements for crop establishment and the subsequent crop growth, thus increasing the capacity of poor farmers to cope with the changes induced by the climatic conditions and the reducing soil resources. Farmers can go ahead with direct seeding with minimal soil moisture rather than waiting for sufficient rainfall for transplanting in case of early drought. DDSR also reduces the cost of additional irrigation and the risk of yield loss from the late-season drought. The generations of new DDSR rice varieties would most likely be needed for the sustainable rice production. Seven breeding progenies viz IR 115844-B-32-B, IR 115844-B-349-B, IR 115844-B-326-B, IR 115844-B-366-B, IR 115844-B-316-B, IR 115844-B-69 and IR 115844-B-230 possessing, better root architecture for nutrient uptake and higher yield with combination of favourable allele for the multiple DDSR traits were identified (Table 5).

The MAGIC population developed in the present study has an advantage over the existing MAGIC population in rice [76] as it has been developed involving upland adapted parents having better root system and



improved yield under rainfed environments. The identified promising breeding progenies with favourable alleles in combination for the multiple traits might serve as potential donors for improving grain yield and adaptability under DDSR. The percent improvement in selected promising breeding progenies for nitrogen uptake ranged from 10 to 99% and phosphorus uptake from 18 to 28% over the best performing parent IR 87707-446-B-B-B (Table 5). The percent improvement in the selected progenies for iron uptake ranged from 4 to 8% and for zinc uptake ranged from 3 to 24% over the best performing parents Kali Aus and Vandana, respectively (Table 5). The percent improvement of number of nodal roots at 29 DAS in selected promising progenies varied from 7 to 35%, 8 to 42% and 11 to 30% in 2015WS, 2016DS and combined season, respectively over the best parent Kali Aus across seasons (Table 5). The percent grain yield advantage of selected promising progenies ranged from 15 to 70% in 2015WS, 21 to 37% in 2016DS and 21 to 56% in combined season analysis over the stable yielding parent Kali Aus across seasons (Table 5). The parents NSICRc 192 and NSICRc 222 were superior to other

parents for root hair length and root density. Identification of suitable traits and progenies may accelerate the development of DDSR adapted rice varieties.

### Conclusions

A major and successful genome-wide association study was carried out for a set of traits- seedling establishment, root morphological, nutrient uptake, grain yield and yield contributing traits increasing rice yield and adaptation in DDSR. The considerable phenotypic variability observed in the MAGIC population coupled with high marker density across all chromosomes provided a strong case for the success of the whole genome association trait mapping. A total of 37 significant marker-trait associations including nine putative QTLs related to the different DDSR traits were detected. The effectiveness of the identified marker-trait associations/putative QTLs was validated by confirming the involvement of collocated QTLs/candidate genes reported previously. The identified putative QTLs and the promising progenies possessing the identified QTLs may serve as the potential candidate donors to be used in GAB programmes



**Table 5** Selected promising progenies showing significant variation for nutrient uptake, root traits and grain yield under dry direct seeded cultivation conditions

Designation	N uptake (kg ha <sup>-1</sup> )			P uptake (kg ha <sup>-1</sup> )			Fe uptake (kg ha <sup>-1</sup> )			Zn uptake (kg ha <sup>-1</sup> )			NR at 29 DAS			RHL			RHD			GY (kg ha <sup>-1</sup> )			
	2015WS	2015WS	2015WS	2015WS	2015WS	2015WS	2015WS	2015WS	2015WS	2015WS	2015WS	2015WS	2015WS	2015WS	2015WS	2015WS	2015WS	2015WS	2015WS	2015WS	2015WS	2015WS	2015WS	2015WS	2015WS
	CS	2016DS	CS	CS	2016DS	CS	CS	2016DS	CS	CS	2016DS	CS	CS	2016DS	CS	CS	2016DS	CS	CS	2016DS	CS	CS	2016DS	CS	CS
IR 115844-B-32-B	81.71	14.28	3.87	0.151	32	33	33	2	2	2	3	3	2	2	2	2	3	3	2	2	2	2	7708	5713	6710
IR 115844-B-349-B	85.18	23.58	3.06	0.208	33	35	34	2	2	2	2	2	2	2	2	2	2	2	1	1	1	7563	5220	6391	
IR 115844-B-326-B	46.67	16.18	2.10	0.156	35	37	35	2	3	2	3	2	2	2	2	2	3	3	2	2	2	6103	5517	5810	
IR 115844-B-366-B	99.95	24.20	2.73	0.190	38	29	33	2	2	2	3	2	2	2	2	2	3	2	2	2	2	6405	5054	5729	
IR 115844-B-316-B	101.57	17.80	3.70	0.179	31	32	31	1	2	2	2	2	2	2	2	2	2	2	2	2	2	5708	5424	5566	
IR 115844-B-69	147.09	25.65	3.87	0.227	39	30	35	1	2	2	2	2	2	2	2	2	1	1	2	2	2	5495	5401	5401	
IR 115844-B-230	113.18	24.95	3.12	0.229	31	28	30	1	2	1	1	1	1	1	1	1	1	1	1	1	1	5205	5211	5211	
NS(CRc 222) <sup>†</sup>	65.20	17.50	2.81	0.134	30	22	26	2	2	2	2	2	2	2	2	2	2	2	2	2	2	3382	4952	4199	
Kali Aus <sup>†</sup>	57.80	12.70	3.57	0.167	29	26	27	1	1	1	1	1	1	1	1	1	1	1	1	1	1	4532	4160	4301	
NS(CRc192) <sup>†</sup>	56.40	10.20	1.99	0.127	21	24	22	2	2	2	2	2	2	2	2	2	2	2	2	2	2	2352	3944	3091	
Yandana <sup>†</sup>	69.70	12.40	3.27	0.184	23	21	22	1	1	1	1	1	1	1	1	1	1	1	1	1	1	2950	4329	3575	
IR 87707-446-B-B-B <sup>†</sup>	74.10	20.00	2.30	0.139	28	27	27	1	2	1	1	1	1	1	1	1	1	1	1	1	1	3954	4474	4157	
Mean	83.21	18.29	3.07	0.170	24	30	27	2	2	2	2	2	2	2	2	2	2	2	2	2	2	5064	4967	5015	
SE mean	8.21	1.55	0.20	0.010	1.61	1.52	1.11	0.14	0.18	0.12	0.23	0.14	0.13	0.14	0.13	0.14	0.12	0.23	0.14	0.14	0.13	514	169	327	
t-test	10.14	11.80	14.98	17.34	15.31	18.57	23.68	10.8	9.33	13.68	8.30	10.42	11.94	9.84	29.38	15.33									

<sup>†</sup>Parent, DS dry season, WS wet season, CS combined seasons, NR3 number of nodal roots at 29 DAS, RHL root hair length, RHD root hair density, GY grain yield (kg ha<sup>-1</sup>), N uptake nitrogen uptake (kg ha<sup>-1</sup>), P uptake phosphorus uptake (kg ha<sup>-1</sup>), Fe uptake iron uptake (kg ha<sup>-1</sup>), Zn uptake zinc uptake (kg ha<sup>-1</sup>)

improving grain yield and adaptability of rice under DDSR. Identification of high yielding, resource efficient and direct seeded adapted breeding progenies with favourable alleles for multiple traits may help breeders to recommend for release as varieties to be cultivated by farmers under DDSR.

## Additional files

**Additional file 1: Table S1.** The correlation observed among traits across seasons. **Table S2.** The detailed description on the candidate gene identified near or in the region of significant marker-trait association/putative QTLs identified in the present study using MSU v.7 rice genome browser (<http://rice.plantbiology.msu.edu/cgi-bin/gbrowse/rice/#search>). (XLSX 73 kb)

**Additional file 2: Figure S1.** Average rainfall data (mm) collected during (a) 2015WS (b) 2016DS. **Figure S2.** The details on the seedling establishment traits, root and nutrient uptake traits, lodging resistance traits, plant morphological, grain yield and yield attributing traits measured under the present study. **Figure S3.** Prostrate tester quantifying stem strength at breaking point. **Figure S4.** Principal component analysis plot of phenotypic traits in (a) 2015WS (b) 2016DS and (c) combined season. (DOCX 1984 kb)

## Acknowledgements

We thank Ma. Teresa Sta. Cruz and Paul Maturan for the management of field experiments, Jocelyn Guevarra and RuthErica Carpio for assistance with seed preparations and data management respectively.

## Authors' contributions

SRS and NS were involved in conducting the experiment, analysis, data interpretation, and drafting of the manuscript; VKS, PS and RKV were involved in analysis and interpretation; SK, SPS, SKG, MP and RBV were involved in writing and revision of the manuscript; AK conceived the study and was involved in critical revision of the manuscript and final approval of the version to be published.

## Funding

We thank Asian Development Bank and Government of Finland for the financial support to conduct the experiments and publish this study through the project "TA8441-Development and dissemination of climate resilient rice varieties for water short areas of South Asia and Southeast Asia."

## Availability of data and materials

The relevant supplementary data has been provided with the manuscript.

## Ethics approval and consent to participate

Not applicable.

## Consent for publication

The manuscript has been approved by all authors.

## Competing interests

The authors declare that they have no competing interests.

## Author details

<sup>1</sup>Rice Breeding Platform, International Rice Research Institute, DAPO Box 7777, Metro Manila, Philippines. <sup>2</sup>International Rice Research Institute, South Asia Hub, ICRISAT, Patancheru, Hyderabad, India. <sup>3</sup>Center of Excellence in Genomics and System Biology, International Crops Research Institute for the Semi-Arid Tropics (ICRISAT), Patancheru, Hyderabad, India. <sup>4</sup>ICAR Research Complex for Eastern Region, Patna, Bihar, India. <sup>5</sup>Bihar Agricultural University, Sabour, Bihar, India. <sup>6</sup>Agriculture and Forestry University, Rampur, Chitwan, Nepal. <sup>7</sup>National Rice Research Program, Hardinath, Nepal. <sup>8</sup>Punjab Agricultural University, Ludhiana, India.

Received: 3 December 2018 Accepted: 23 May 2019

Published online: 10 June 2019

## References

- Balasubramanian V, Hill JE. Direct Seeding of Rice in Asia: Emerging Issues and Strategic research Needs for 21st Century. In: Pandey S, Mortimer M, Wade L, Tuong TP, Lopes K, Hardy B, editors. Direct Seeding: Research Strategies and Opportunities. Manila: International Research Institute; 2002.
- Varshney RK, Graner A, Sorrells ME. Genomics-assisted breeding for crop improvement. *Trends Plant Sci.* 2005;10(12):621–30.
- Varshney RK, Terauchi R, McCouch SR. Harvesting the promising fruits of genomics: applying genome sequencing technologies to crop breeding. *PLoS Bio.* 2014;12(6):e1001883.
- Kang YJ, Lee T, Lee J, Shim S, Jeong H, Satyawani D, Kim MY, Lee SH. Translational genomics for plant breeding with the genome sequence explosion. *Plant Biotechnol J.* 2016;14(4):1057–69.
- Stoop W, Uphoff N, Kassam A. A review of agricultural research issues raised by the system of rice intensification (SRI) from Madagascar: opportunities for improving farming systems for resource-poor farmers. *Agric Syst.* 2002; 71:249–74.
- Tabbal DF, Bouman BAM, Bhuiyan SI, Sibayan EB, Sattar MA. On-farm strategies for reducing water input in irrigated rice: case studies in the Philippines. *Agric Water Manag.* 2002;56(2):93–112.
- BAM B, Wang H, Yang X, Zhao JF, Wang CG. Aerobic rice (Han Dao): a new way of growing rice in water-short areas. In: Proceedings of the 12th international soil conservation organization conference. Beijing: Tsinghua University Press; 2002;26:31.
- Kumar V, Ladha JK. Direct seeding of rice: recent developments and future research needs. In: Donald LS, editor. *Adv. Agron.* Newark, Del (USA); 2011. p. 297–413.
- Zhu XG, Long SP, Ort DR. Improving photosynthetic efficiency for greater yield. *Ann Rev Plant Bio.* 2010;61:235–61.
- Horton P. Prospects for crop improvement through the genetic manipulation of photosynthesis: morphological and biochemical aspects of light capture. *J Exp Bot.* 2000;51:475–85.
- Yano M, Kojima S, Takahashi Y, Lin H, Sasaki T. Genetic control of flowering time in rice, a short-day plant. *Plant Physiol.* 2001;127:1425–9.
- Xue W, Xing Y, Weng X, Zhao Y, Tang W, Wang L, Zhou H, Yu S, Xu C, Li X. Natural variation in Ghd7 is an important regulator of heading date and yield potential in rice. *Nat Genet.* 2008;40:761–7.
- Yan WH, Wang P, Chen HX, Zhou HJ, Li QP, Wang CR, Ding ZH, Zhang YS, Yu SB, Xing YZ. A major QTL, Ghd8, plays pleiotropic roles in regulating grain productivity, plant height, and heading date in rice. *Mol Plant.* 2011;4: 319–30.
- Yano K, Ookawa T, Aya K, Ochiai Y, Hirasawa T, Ebitani T. Isolation of a novel lodging resistance QTL gene involved in strigolactone signaling and its pyramiding with a QTL gene involved in another mechanism. *Mol Plant.* 2015;8:303–14.
- Spielmeier W, Ellis MH, Chandler PM. Semidwarf (sd-1), "green revolution" rice, contains a defective gibberellin 20-oxidase gene. *Proc Natl Acad Sci USA.* 2002;99:9043–8.
- Jiao Y, Wang Y, Xue D, Wang J, Yan M, Liu G. Regulation of OsSPL14 by OsmiR156 defines ideal plant architecture in rice. *Nat Genet.* 2010; 42(6):541–4.
- Biselli C, Bagnaresi P, Cavalluzzo D, Urso S, Desiderio F, Orasen G. Deep sequencing transcriptional fingerprinting of rice kernels for dissecting grain quality traits. *BMC Genomics.* 2015;16(1):1.
- Comas LH, Becker SR, Von Mark VC, Byrne PF, Dierig DA. Root traits contributing to plant productivity under drought. *Front Plant Sci.* 2013; 4:442.
- Sandhu N, Torres RO, Sta Cruz MT, Maturan PC, Jain R, Kumar A, Henry A. Traits and QTLs for development of dry direct-seeded rainfed rice varieties. *J Exp Bot.* 2015;66:225–44.
- Novoa R, Loomis RS. Nitrogen and plant production. *Plant Soil.* 1981;58:177–204.
- Mackill DJ, Coffman WR, Garrity DP. Rainfed lowland Rice improvement. Los Banos, CA: international Rice research institute 1996. Chimungu J, Maliro M, Nalivata P, Kanyama-Phiri G, Brown K, Lynch J. Utility of root cortical aerenchyma under water limited conditions in tropical maize. *Field Crop Res.* 2015;171:86–98.

22. Sandhu N, Raman KA, Torres RO, Audebert A, Dardou A, Kumar A, Henry A. Rice root architectural plasticity traits and genetic regions for adaptability to variable cultivation and stress conditions. *Plant Physiol.* 2016;171:2562–76.
23. Steele KA, Virk DS, Kumar R, Prasad SC, Witcombe JR. Field evaluation of upland rice lines selected for QTLs controlling root traits. *Field Crop Res.* 2007;101:180–6.
24. Suji KK, Prince K, Mankhar PS, Kanagaraj P, Poornima R, Amutha K, Kavitha S, Biji KR, Gomez SM, Babu RC. Evaluation of rice near iso-genic lines with root QTLs for plant production and root traits in rainfed target populations of environment. *Field Crop Res.* 2012;137:89–96.
25. Kadam NN, Yin X, Bindraban PS, Struik PC, Jagadish KS. Does morphological and anatomical plasticity during the vegetative stage make wheat more tolerant of water deficit stress than rice? *Plant Physiol.* 2015;167:1389–401.
26. Chimungu JG, Maliro MFA, Nalivata PC, Kanyama-Phiri G, Brown KM, Lynch LP. Utility of root cortical aerenchyma under water limited conditions in tropical maize (*Zea mays* L.). *Field Crop Res.* 2015;171:86–98.
27. Fenta BA, Stephen EB, Karl JK, James D, Burrigge KM, Barlow JP, Lynch CHF. Field phenotyping of soybean roots for drought stress tolerance. *Agronomy.* 2014;4(3):418–35.
28. Korte A, Farlow A. The advantages and limitations of trait analysis with GWAS: a review. *Plant Methods.* 2013;9(1):29.
29. Breseghello F, Sorrells ME. Association mapping of kernel size and milling quality in wheat (*Triticum aestivum* L.) cultivars. *Genetics.* 2006;172:1165–77.
30. Jia G, Huang X, Zhi H, Zhao Y, Zhao Q, Li W, Chai Y, Yang L, Liu K, Lu H, Zhu C, Lu Y, Zhou C, Fan D, Weng Q, Guo Y, Huang T, Zhang L, Lu T, Feng Q, Hao H, Liu H, Lu P, Zhang N, Li Y, Guo E, Wang S, Wang S, Liu J, Zhang W, Chen G, Zhang B, Li W, Wang Y, Li H, Zhao B, Li J, Diao X, Han B. A haplotype map of genomic variations and genome-wide association studies of agronomic traits in foxtail millet (*Setaria italica*). *Nat Genet.* 2013;45:957–61.
31. Jun TH, Van K, Kim MY, Lee SH, Walker DR. Association analysis using SSR markers to find QTL for seed protein content in soybean. *Euphytica.* 2008;162:179–91.
32. Wilson LM, Whitt SR, Ibanez AM, Rocheford TR, Goodman MM, Buckler ES. Dissection of maize kernel composition and starch production by candidate gene association. *Plant Cell.* 2004;16:2719–33.
33. Camus-Kulandaivelu L, Veyrieras JB, Madur D, Combes V, Fourmann M, Barraud S, Dubreuil P, Gouesnard B, Manicacci D, Charcosset A. Maize adaptation to temperate climate: relationship between population structure and polymorphism in the dwarf gene. *Genetics.* 2006;172:2449–63.
34. Zhao K, Tung CW, Eizenga GC, Wright MH, Ali ML, Price AH, Norton GJ, Islam MR, Reynolds A, Mezey J, McClung AM, Bustamante CD, McCouch SR. Genome-wide association mapping reveals a rich genetic architecture of complex traits in *Oryza Sativa*. *Nat Commun.* 2011;2:467.
35. Kale SM, Jaganathan D, Ruperao P, Chen C, Punna R, Kudapa H, Thudi M, Roorkiwal M, Katta MA, Doddamani D, Garg V. Prioritization of candidate genes in “QTL-hotspot” region for drought tolerance in chickpea (*Cicer arietinum* L.). *Sci Rep.* 2015;5:15296.
36. Saxena RK, Kale SM, Kumar V, Parupali S, Joshi S, Singh V, Garg V, Das RR, Sharma M, Yamini KN, Ghanta A. Genotyping-by-sequencing of three mapping populations for identification of candidate genomic regions for resistance to sterility mosaic disease in pigeonpea. *Sci Rep.* 2017a;7(1):1813.
37. Saxena RK, Singh VK, Kale SM, Tathineni R, Parupalli S, Kumar V, Garg V, Das RR, Sharma M, Yamini KN, Muniswamy S. Construction of genotyping-by-sequencing based high-density genetic maps and QTL mapping for fusarium wilt resistance in pigeonpea. *Sci Rep.* 2017b;7(1):1911.
38. Zhang YF, Yu-yin MA, Zong-xiang CH, Jie ZO, Tian-xiao CH, Qian-qian LI, Xue-biao PA, Shi-min ZU. Genome-wide association studies reveal new genetic targets for five panicle traits of international rice varieties. *Rice Sci.* 2015;22(5):217–26.
39. Rafalski JA. Association genetics on crop improvement. *Curr Opi Plant Biol.* 2010;13:1–7.
40. Dixit S, Grondin A, Lee CR, Henry A, Olds TM, Kumar A. Understanding rice adaptation to varying agro-ecosystems: trait interactions and quantitative trait loci. *BMC Genet.* 2015;16(1):86.
41. IRRI. SES (Standard Evaluation System for Rice). International Network for Genetic Evaluation of Rice. Los Baños: International Rice Research Institute (IRRI); 1996.
42. Kashiwagi T, Ishimaru K. Identification and functional analysis of a locus for improvement of lodging resistance in rice. *Plant Physiol.* 2004;134(2):676–83.
43. Palamiswamy KM, Gomez KA. Length – width method for estimating leaf area of rice. *Agron J.* 1974;66:430–3.
44. Pritchard J, Wen W. Department of Human Genetics, University of Chicago, 920 E 58th st, CLCS 507, Chicago IL 60637, USA; 2004.
45. Lipka AE, Tian F, Wang Q, Peiffer J, Li M, Bradbury PJ, Gore MA, Buckler ES, Zhang Z. GAPIT: genome association and prediction integrated tool. *Bioinformatics.* 2012;28(18):2397–9.
46. Bradbury PJ, Zhang Z, Kroon DE, Casstevens TM, Ramdoss Y, Buckler ES. TASSEL: software for association mapping of complex traits in diverse samples. *Bioinformatics.* 2007;23(19):2633–5.
47. Kimura M. A simple method for estimating evolutionary rates of base substitutions through comparative studies of nucleotide sequences. *J Mol Evol.* 1980;16:111–20.
48. Cho SH, Yoo SC, Zhang H, Lim JH, Aek NC. Rice NARROW LEAF1 regulates LEAF and adventitious root development. *Plant Mol Biol Report.* 2014;32(1):270–81.
49. Qu Y, Mu P, Zhang H, Chen CY, Gao Y, Tian Y, Wen F, Li Z. Mapping QTLs of root morphological traits at different growth stages in rice. *Genetica.* 2008;133(2):187–200.
50. Kamoshita A, Wade L, Ali M, Pathan M, Zhang J, Sarkarung S, Nguyen H. Mapping QTLs for root morphology of a rice population adapted to rainfed lowland conditions. *Theor Appl Genet.* 2002;104(5):880–93.
51. Courtois B, Shen L, Petalcorin W, Carandang S, Mauleon R, Li Z. Locating QTLs controlling constitutive root traits in the rice population IAC 165x Co39. *Euphytica.* 2003;134(3):335–45.
52. Sakamoto T, Sakakibara H, Kojima M, Yamamoto Y, Nagasaki H, Inukai Y, Sato Y, Matsuoka M. Ectopic expression of KNOTTED1-like homeobox protein induces expression of cytokinin biosynthesis genes in rice. *Plant Physiol.* 2006;142(1):54–62.
53. Qiu S, Ma N, Che S, Wang Y, Peng X, Zhang G, Wang G, Huang J. Repression of OsEXPA3 expression leads to root system growth suppression in rice. *Crop Sci.* 2014;54(5):2201–13.
54. Szakuta T, Kamiya N, Nishimura T, Ohmae K, Sato Y, Imamura K, Nagato Y, Koshiba T, Nagamura Y, Ashikari M, Kitano H. A rice tryptophan deficient dwarf mutant, *tdc1*, contains a reduced level of indole acetic acid and develops abnormal flowers and organless embryos. *Plant J.* 2009;60(2):227–41.
55. Yu B, Zhongwei L, Haixia L, Xiaojiao L, Jiayang L, Yonghong W, Xia Z. *TAC1*, a major quantitative trait locus controlling tiller angle in rice. *Plant J.* 2007;52(5):891–8.
56. Li ZK. A major gene, *Ta1*, and QTLs affecting tiller and leaf angles in rice. *Rice Genet Newsl.* 1998;15:154–6.
57. Li Ta Z, Paterson A, Pinson S, Stansel J. RFLP facilitated analysis of tiller and leaf angles in rice (*Oryza sativa* L.). *Euphytica.* 1999;109:79–84.
58. Wang Z, Wang J, Bao Y, Wang F, Zhang H. Quantitative trait loci analysis for rice seed vigor during the germination stage. *J Zhejiang Univ Sci B.* 2010;11(12):958–64.
59. Moncada P, Martinez CP, Borrero J, Châtel M, Gauch Jr H, Guimaraes E, Tohme J, McCouch SR. Quantitative trait loci for yield and yield components in an *Oryza sativa* × *Oryza rufipogon* BC<sub>2</sub>F<sub>2</sub> population evaluated in an upland environment. *Theor Appl Genet.* 2001;102(1):41–52.
60. Han M, Kim CY, Lee J, Lee SK, Jeon JS. *OsWRKY42* represses *OsMT1d* and induces reactive oxygen species and leaf senescence in rice. *Mol Cells.* 2014;37(7):532.
61. Wang Q, Xie W, Xing H, Yan J, Meng X, Li X, et al. Genetic architecture of natural variation in rice chlorophyll content revealed by a genome-wide association study. *Mol Plant.* 2015;8(6):946–57.
62. Hirano K, Kotake T, Kamihara K, Tsuna K, Aohara T, Kaneko Y, Takatsuji H, Tsumuraya Y, Kawasaki S. Rice BRITTLE CULM 3 (BC3) encodes a classical dynamin OsDRP2B essential for proper secondary cell wall synthesis. *Planta.* 2010;232(1):95–108.
63. Monna L, Kitazawa N, Yoshino R, Suzuki J, Masuda H, Maehara Y, et al. Positional cloning of rice semidwarfing gene, *sd-1*: rice “green revolution gene” encodes a mutant enzyme involved in gibberellin synthesis. *DNA Res.* 2002;9(1):11–7.
64. Vikram P, Swamy BM, Dixit S, Singh R, Singh BP, Miro B, et al. Drought susceptibility of modern rice varieties: an effect of linkage of drought tolerance with undesirable traits. *Sci Rep.* 2015;5:14799.
65. Komatsu K, Maekawa M, Ujiiie S, Satake Y, Furutani I, Okamoto H, Shimamoto K, Kyozuka J. LAX and SPA: major regulators of shoot branching in rice. *Proc Natl Acad Sci USA.* 2003;100(20):11765–70.
66. Koumoto T, Shimada H, Kusano H, She KC, Iwamoto M, Takano M. Rice monoculm mutation *moc2*, which inhibits outgrowth of the second tillers,

- is ascribed to lack of a fructose-1, 6-bisphosphatase. *Plant Biotechnol.* 2013; 30(1):47–56.
67. Inoue H, Kobayashi T, Nozoye T, Takahashi M, Kakei Y, Suzuki K, Nakazono M, et al. Rice *OsYSL15* is an iron-regulated iron (III)-deoxymugineic acid transporter expressed in the roots and is essential for iron uptake in early growth of the seedlings. *J Biol Chem.* 2009;284(6):3470–9.
  68. Liu W, Xu ZH, Luo D, Xue HW. Roles of *OsCK1*, a rice casein kinase I, in root development and plant hormone sensitivity. *Plant J.* 2003;36(2):189–202.
  69. Passaia G, Fonini LS, Caverzan A, Jardim-Messeder D, Christoff AP, Gaeta ML, de Araujo Mariath JE, Margis R, Margis-Pinheiro M. The mitochondrial glutathione peroxidase GPX3 is essential for H<sub>2</sub>O<sub>2</sub> homeostasis and root and shoot development in rice. *Plant Sci.* 2013;208:93–101.
  70. Yan YS, Chen XY, Yang K, Sun ZX, Fu YP, Zhang YM, Fang RX. Overexpression of an F-box protein gene reduces abiotic stress tolerance and promotes root growth in rice. *Mol Plant.* 2011;4(1):190–7.
  71. Fang Z, Xia K, Yang X, Grotemeyer MS, Meier S, Rentsch D, Xu X, Zhang M. Altered expression of the PTR/NRT1 homologue *OsPTR9* affects nitrogen utilization efficiency, growth and grain yield in rice. *Plant Biotechnol J.* 2013; 11(4):446–58.
  72. Lee S, Jeon US, Lee SJ, Kim YK, Persson DP, Husted S, Schjørring JK, Kakei Y, Masuda H, Nishizawa NK, An G. Iron fortification of rice seeds through activation of the nicotianamine synthase gene. *Proc Natl Acad Sci USA.* 2009;106(51):22014–9.
  73. Konishi H, Yamane H, Maeshima M, Komatsu S. Characterization of fructose-bisphosphate aldolase regulated by gibberellin in roots of rice seedling. *Plant Mol Biol.* 2004;56(6):839–48.
  74. Price AH, Steele KA, Moore BJ, Jones RGW. Upland rice grown in soil-filled chambers and exposed to contrasting water-deficit regimes: II. Mapping quantitative trait loci for root morphology and distribution. *Field Crops Res.* 2002;76(1):25–43.
  75. Descalsota GI, Swamy BM, Zaw H, Inabangan-Asilo MA, Amparado A, Mauleon R, Chadha-Mohanty P, Arocena EC, Raghavan C, Leung H, Hernandez JE. Genome-wide association mapping in a rice MAGIC plus population detects QTLs and genes useful for biofortification. *Front. Plant Sci.* 2018;9:1–20.
  76. Bandillo N, Raghavan C, Muyco PA, Sevilla MA, Lobina IT, Dilla-Ermita CJ, Tung CW, McCouch S, Thomson M, Mauleon R, Singh RK. Multi-parent advanced generation inter-cross (MAGIC) populations in rice: progress and potential for genetics research and breeding. *Rice.* 2013;6(1):11–25.

## Publisher's Note

Springer Nature remains neutral with regard to jurisdictional claims in published maps and institutional affiliations.

**Ready to submit your research? Choose BMC and benefit from:**

- fast, convenient online submission
- thorough peer review by experienced researchers in your field
- rapid publication on acceptance
- support for research data, including large and complex data types
- gold Open Access which fosters wider collaboration and increased citations
- maximum visibility for your research: over 100M website views per year

**At BMC, research is always in progress.**

Learn more [biomedcentral.com/submissions](https://biomedcentral.com/submissions)

