

Radium-228-derived ocean mixing and trace element inputs in the South Atlantic

Yu-Te Hsieh¹, Walter Geibert², E. Malcolm S. Woodward³, Neil J. Wyatt⁴, Maeve C. Lohan⁴, Eric P. Achterberg^{4,5}, and Gideon M. Henderson¹

¹Department of Earth Sciences, University of Oxford, Oxford, UK

²Alfred Wegener Institute Helmholtz Centre for Polar and Marine Research, Bremerhaven, Germany

³Plymouth Marine Laboratory, Plymouth, UK

⁴Ocean and Earth Sciences, National Oceanography Centre, Southampton, UK

⁵GEOMAR Helmholtz Centre for Ocean Research, Kiel, Germany

Correspondence: Yu-Te Hsieh (yu-te.hsieh@earth.ox.ac.uk)

Received: 9 October 2020 – Discussion started: 13 October 2020

Revised: 20 January 2021 – Accepted: 8 February 2021 – Published: 9 March 2021

Abstract. Trace elements (TEs) play important roles as micronutrients in modulating marine productivity in the global ocean. The South Atlantic around 40° S is a prominent region of high productivity and a transition zone between the nitrate-depleted subtropical gyre and the iron-limited Southern Ocean. However, the sources and fluxes of trace elements to this region remain unclear. In this study, the distribution of the naturally occurring radioisotope ²²⁸Ra in the water column of the South Atlantic (Cape Basin and Argentine Basin) has been investigated along a 40° S zonal transect to estimate ocean mixing and trace element supply to the surface ocean. Ra-228 profiles have been used to determine the horizontal and vertical mixing rates in the near-surface open ocean. In the Argentine Basin, horizontal mixing from the continental shelf to the open ocean shows an eddy diffusion of $K_x = 1.8 \pm 1.4 (10^6 \text{ cm}^2 \text{ s}^{-1})$ and an integrated advection velocity $w = 0.6 \pm 0.3 \text{ cm s}^{-1}$. In the Cape Basin, horizontal mixing is $K_x = 2.7 \pm 0.8 (10^7 \text{ cm}^2 \text{ s}^{-1})$ and vertical mixing $K_z = 1.0\text{--}1.7 \text{ cm}^2 \text{ s}^{-1}$ in the upper 600 m layer. Three different approaches (²²⁸Ra diffusion, ²²⁸Ra advection, and ²²⁸Ra/TE ratio) have been applied to estimate the dissolved trace element fluxes from the shelf to the open ocean. These approaches bracket the possible range of off-shelf fluxes from the Argentine Basin margin to be 4–21 ($\times 10^3$) nmol Co m⁻² d⁻¹, 8–19 ($\times 10^4$) nmol Fe m⁻² d⁻¹ and 2.7–6.3 ($\times 10^4$) nmol Zn m⁻² d⁻¹. Off-shelf fluxes from the Cape Basin margin are 4.3–6.2 ($\times 10^3$) nmol Co m⁻² d⁻¹, 1.2–3.1 ($\times 10^4$) nmol Fe m⁻² d⁻¹,

and 0.9–1.2 ($\times 10^4$) nmol Zn m⁻² d⁻¹. On average, at 40° S in the Atlantic, vertical mixing supplies 0.1–1.2 nmol Co m⁻² d⁻¹, 6–9 nmol Fe m⁻² d⁻¹, and 5–7 nmol Zn m⁻² d⁻¹ to the euphotic zone. Compared with atmospheric dust and continental shelf inputs, vertical mixing is a more important source for supplying dissolved trace elements to the surface 40° S Atlantic transect. It is insufficient, however, to provide the trace elements removed by biological uptake, particularly for Fe. Other inputs (e.g. particulate or from winter deep mixing) are required to balance the trace element budgets in this region.

1 Introduction

Trace elements (TEs) play important roles as micronutrients for marine productivity in the surface ocean (Morel and Price, 2003; Lohan and Tagliabue, 2018). For example, iron, zinc, and cobalt are known to be essential micronutrients for the cellular metabolic enzymes in marine phytoplankton, and hence they co-limit primary productivity in some ocean regions. The southern subtropical convergence (SSTC) in the South Atlantic, near 40° S (Fig. 1), is a prominent high-productivity region (0.2–0.3 mg chlorophyll *a* m⁻³; Longhurst, 2007) and a transition zone between the nitrate-depleted subtropical gyre and the iron-limited Southern Ocean, creating one of the most dynamic nutrient environments in the global oceans (Moore et

al., 2004). However, the trace element sources and fluxes that fuel this region remain poorly constrained. Modelling and experimental studies have both suggested that this region is iron limited or co-limited (Moore et al., 2004; Browning et al., 2014, 2017). It also has the lowest reported dissolved zinc concentrations in the global oceans (Wyatt et al., 2014), and the replacement for zinc by cobalt is crucial for phytoplankton, particularly in low-zinc regions (Price and Morel, 1990). Thus, knowing the sources and fluxes of iron, zinc, and cobalt can improve our understanding of the limiting factors for productivity in this highly productive region.

Oceanic mixing and advection facilitate the transport of nutrients to the euphotic zone (Oschlies, 2002). The distribution of TEs in the surface ocean is primarily controlled by the inputs from the continental shelves (i.e. rivers, submarine groundwater discharge (SGD), and sediments), deep ocean waters (regeneration, continental slopes, and hydrothermal vents) and aeolian inputs, with these mediated by lateral and vertical mixing (diffusive / turbulent mixing), advection, particle scavenging and biological uptake. In particular, deep winter mixing has been shown to be an important mechanism bringing TEs from below the mixed layer to the surface ocean (Tagliabue et al., 2014; Achterberg et al., 2018, 2020; Rigby et al., 2020). Geochemical tracers for ocean mixing can therefore be used to indirectly estimate TE inputs and outputs in the upper ocean, e.g. tritium (^3He) (Jenkins, 1988; Schlitzer, 2016) and radium isotopes (^{228}Ra) (Cai et al., 2002; Ku et al., 1995; Nozaki and Yamamoto, 2001; Sarmiento et al., 1990; Moore, 2000; Charette et al., 2007; Sanial et al., 2018).

The four naturally occurring radium isotopes cover a wide range of half-lives (^{226}Ra , $T_{1/2} = 1600$ years; ^{228}Ra , $T_{1/2} = 5.75$ years; ^{223}Ra , $T_{1/2} = 11.4$ d; ^{224}Ra , $T_{1/2} = 3.66$ d), which enables us to study oceanic processes at different timescales. Ra-228 is continuously produced through the decay of ^{232}Th in shelf sediments, released into seawater, and then transported into the surface open ocean by mixing or advection. The half-life of ^{228}Ra is much shorter than the estimated Ra residence time by removal of ~ 500 years (Moore and Dymond, 1991). The distribution of ^{228}Ra in the ocean is therefore mainly controlled by ocean transport and radioactive decay, and can be used to estimate lateral mixing from the coastal shelf or continental slope to the open ocean (Kaufman et al., 1973; Knauss et al., 1978; Yamada and Nozaki, 1986; Sanial et al., 2018). Subsequent downward mixing from the surface can also be used to assess vertical mixing in the upper water column (Charette et al., 2007; Sarmiento et al., 1976; van Beek et al., 2008). Radium-228 has also been used as a conservative tracer to estimate submarine groundwater discharge (SGD) (Windom et al., 2006; Moore et al., 2008; Kwon et al., 2014; Rodellas et al., 2015; Le Gland et al., 2017), river inputs (Vieira et al., 2020), continental shelf (Rutgers van der Loeff et al., 1995; Charette et al., 2016; Sanial et al., 2018; Kipp et al., 2018a) and hydrothermal inputs (Kipp et al., 2018b).

Previous work has assessed TE inputs to the wider South Atlantic from rivers (Vieira et al., 2020), atmospheric dust (Gaiero et al., 2013), shelf sediments (Graham et al., 2015), the Agulhas current (Paul et al., 2015) and hydrothermal vents (Saito et al., 2013). There are also studies of TE distributions and basin-scale inputs in some areas of the South Atlantic (e.g. Chever et al., 2010; Bown et al., 2011; Noble et al., 2012). Two UK GEOTRACES cruises in 2010–2012 provided a significant increase in such observations, focusing particularly on 40°S (Homoky et al., 2013; Browning et al., 2014; Wyatt et al., 2014, 2020; Chance et al., 2015; Menzel Barraqueta et al., 2019). These published studies did not assess the fluxes of TEs by ocean mixing and transport. In this study, we address this issue using samples taken on the two 40°S Atlantic UK GEOTRACES cruises. We investigate the distributions of ^{228}Ra , as well as ^{226}Ra , in both the Argentine and Cape basins of a 40°S latitudinal transect in the Atlantic Ocean. This is also the first exploration of the vertical and horizontal ^{228}Ra distributions reported for the Cape Basin. We investigate the application of seawater ^{228}Ra as a tracer for vertical and horizontal mixing in the surface South Atlantic, to provide estimates of the dissolved TE (dTE) fluxes, with a focus on cobalt, iron, and zinc, in the micronutrient-depleted euphotic zone.

2 Study sites and methods

2.1 Hydrographic setting

The study was conducted from the RRS *Discovery* and RRS *James Cook* during two UK GEOTRACES cruises, D357 and JC068, along the GA10 40°S transect of the Atlantic Ocean (Fig. 1). The surface currents show dynamic interaction and mixing on both the western and eastern sides of this transect. In the Argentine Basin, the Río de la Plata estuary is located on the western margin of the transect. The boundary Brazil Current (BrC) and Malvinas Current (MC) meet between 33 and 45°S along the continental margin of South America and these become the South Atlantic Current (SAC) transporting water eastwards along 40°S . The water from the BrC is captured between Stn20 and Stn21 with a strong west to east gradient in salinity and other chemical and physical properties, which also suggests a limited exchange of water across the continental shelf break (see below). In the Cape Basin, the SAC turns northeast before reaching the continent of Africa, and the Agulhas Current (AC) adds warm water eddies from the Indian Ocean. The warm and salty water of the AC was sampled in the top 500 m at Stn2 (Fig. 1b). These currents meet and become the Benguela Current (BeC) flowing through the Cape Basin and into the South Atlantic.

2.2 Water sampling

Seawater samples for Ra analysis were collected from 14 stations on the D357 and JC068 cruises (Fig. 1). The first

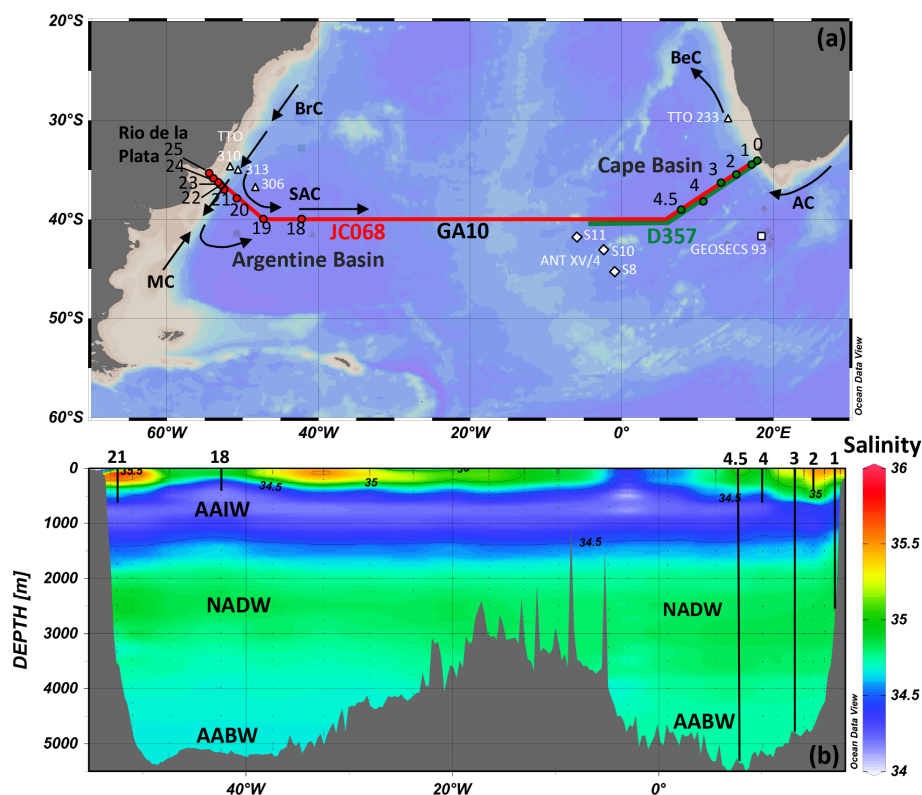


Figure 1. (a) Map of cruise tracks, station locations and surface currents. GA10 cruise D357 and JC068 stations are labelled with green and red circles, respectively. Stations of previous Ra studies are labelled with open symbols (Transient Tracers in the Ocean (TTO): Key et al., 1990, 1992a, b; GEOSECS: Ku and Lin, 1976; ANT XV/4: Hanfland, 2002). Surface currents are shown with arrows. (b) Salinity profiles along the cruise track of UK GEOTRACES GA10 are labelled with water masses. Vertical lines indicate the stations where vertical Ra water profiles are available.

cruise (D357) took place in the SE Atlantic (Cape Basin) between October and November 2010; the second cruise (JC068) took place along the whole 40° S transect between December 2011 and January 2012. For radium isotope analyses, the Cape Basin samples were only taken from D357, and the Argentine Basin samples were taken from JC068. For TEs, samples were taken from both D357 and JC068. Stations from these cruises are shown along with those from previous Ra studies (e.g. GEOSECS and TTO) in this region (Fig. 1a).

A total of 48 samples were analysed for $^{228}\text{Ra}/^{226}\text{Ra}$ ratio and ^{228}Ra concentration, and 33 samples for ^{226}Ra concentration, collected using three different sampling techniques during the cruise. Surface seawater samples (80–100 L) at 5 m depth were collected via a trace-metal clean seawater supply (fish) using a Teflon bellow pump (Almatec-A15) and acid-cleaned tubing. Samples between 50 and 400 m were collected using a standard conductivity, temperature, and depth (CTD) rosette, typically sampling from four 20 L Niskin bottles. These samples were stored briefly in low-density polyethylene (LDPE) cubitainers and then filtered through Mn-fibre cartridges by gravity (flow rate $< 0.5 \text{ L min}^{-1}$) on board for the extraction of radium iso-

topes (Moore et al., 1985; Reid et al., 1979). In addition, large-volume seawater sampling (300–600 L) was carried out using in situ stand-alone pump (SAP) systems, pumping seawater over Mn fibres in polypropylene cartridges (van Beek et al., 2008) at flow rate of $2\text{--}5 \text{ L min}^{-1}$ at three selected sampling stations (Stn1, Stn3, and Stn4.5). As the cartridge Ra collection efficiency varies hugely, ranging from 70 % to 128 % (Geibert et al., 2013), all samples collected by these collection techniques (pump, CTD, and SAP) were only used for measurement of $^{228}\text{Ra}/^{226}\text{Ra}$ ratios. To address the efficiency issue, for most samples, a separate sample of 250 mL seawater was also collected for measurement of ^{226}Ra concentration. This method provides the advantage of allowing a correction for variable efficiencies during the sample preparation.

Trace element samples were collected using a titanium CTD rosette fitted with trace-metal clean Teflon-coated Niskin bottles and filtered on board through $0.8/0.2 \mu\text{m}$ polyethersulfone (PES) membrane cartridge filters (AcroPak500™, Pall) before analysis. All the TE data and fluxes reported and discussed in this study refer to the dissolved fraction only. The data of zinc and cobalt were measured and published by Wyatt et al. (2014, 2020). Some

of the iron data were determined and published by Browning et al. (2014) and Clough et al. (2016). All the TE data are available on the GEOTRACES Intermediate Data Product (IDP) 2017 (Schlitzer et al., 2018).

All the trace-metal cleaning procedures followed the GEOTRACES sampling protocols (Cutter et al., 2010). In brief, the sample tubing and bottles were rinsed with Milli-Q water and filled with 0.1 M HCl for 1 d. After emptying the acid, the tubing and bottles were rinsed thoroughly with Milli-Q water. The tubing and bottles were also rinsed with open-ocean seawater before sampling.

2.3 Ra isotopes analysis

Mn-fibre samples were first counted on board using a four-channel radium delayed coincidence counting (RaDeCC) system for ^{224}Ra , ^{223}Ra , ^{228}Th , and ^{227}Ac (Moore and Arnold, 1996), but the data for ^{224}Ra , ^{223}Ra , ^{228}Th , and ^{227}Ac are not discussed in this paper. After the counting, Ra was purified using the following procedure for precisely measuring $^{228}\text{Ra}/^{226}\text{Ra}$ ratios and ^{228}Ra concentrations by a Nu Instrument multi-collector inductively coupled plasma mass spectrometry (MC-ICP-MS) at the University of Oxford following the procedures established by Hsieh and Henderson (2011). Mn fibres were ashed at 550 °C for 6 h and then leached with distilled 6 N HCl to remove Ra from the ashed fibres. Ra was then co-precipitated with $\text{Sr}(\text{Ra})\text{SO}_4$ in the leached solution, centrifuged, and cleaned with 3 N HCl and pure H_2O a few times until the pH was > 4 . To increase the dissolution rate, $\text{Sr}(\text{Ra})\text{SO}_4$ was converted to $\text{Sr}(\text{Ra})\text{CO}_3$ by adding 2 mL 1 M Na_2CO_3 solution and heated on a hot-plate for 3 h. After centrifuging and discarding the supernatant, $\text{Sr}(\text{Ra})\text{CO}_3$ was finally dissolved in 2 mL 6 N HCl for ion exchange column chemistry, using Bio-Rad AG50-X8 cation exchange resin (to separate Ra and Ba from ^{228}Th and other matrix elements, e.g. Ca, Sr, and Mn) and Eichrom Sr-Spec resin (to separate Ra from Ba to avoid molecular interferences during MC-ICP-MS analysis).

Smaller seawater samples (250 mL) collected for ^{226}Ra were spiked with a ^{228}Ra spike (Hsieh and Henderson, 2011) and the Ra was purified by the precipitation of CaCO_3 and processing with ion exchange columns of AG1-X8, AG50-X8, and Sr-Spec resin for the measurement of ^{226}Ra concentrations by MC-ICP-MS (Foster et al., 2004). In general, the contribution of seawater ^{228}Ra (< 0.05 attomole) is negligible, compared to the spiked ^{228}Ra signal (≈ 70 attomole). Assessments of overall chemical blanks were conducted the same way as for the samples throughout the whole chemical procedures, except that there was no added seawater. The blanks were found to contribute less than 1 % of the ^{226}Ra in the sample and were not detectable for ^{228}Ra .

During the MC-ICP-MS analyses, ^{228}Ra and ^{226}Ra were measured simultaneously on two ion counters, and the uranium standard CRM-145 was used to bracket each sample for the mass bias and ion counter gain corrections. Instrumental

memories of ^{228}Ra and ^{226}Ra were also detected on ion counters before each measurement. The machine memory was about 0.2 ± 0.1 cps (counts per second) ($n = 16$, 2 SE). The memory correction was insignificant for ^{226}Ra , because the ratio of memory to sample signal is small ($< 10^{-4}$). However, the memory correction could be significant for samples with low ^{228}Ra activities and count rates. For instance, the count rate during analysis of ^{228}Ra on the sample collected at 4741 m at Stn4.5 was only 0.5 cps. At this low count rate, instrumental memory contributed ~ 40 % of the signal to the sample ^{228}Ra signal and the uncertainty of memory correction becomes substantial. In this study, most of the surface and deep waters in the South Atlantic were measured at count rates > 2 cps ^{228}Ra , which provides assurance that the contribution of the instrumental memory uncertainty to the total uncertainty is < 10 %.

For samples without accompanied ^{226}Ra measurements, silica data (Table 1) are used to assess ^{226}Ra activities (Appendix A). The Atlantic Ocean ^{226}Ra –Si relationship is based on the GEOTRACES (GA03), GEOSECS, and TTO datasets (Fig. A1 in Appendix A, Ku and Lin, 1976; Key et al., 1990, 1992a, b; Charette et al., 2015). This relationship is used to determine ^{226}Ra activities in the 27 cases where no subsamples were collected for separate ^{226}Ra analysis (such ^{226}Ra estimates are shown in brackets in Table 1). The relationship has a slope of $0.119 \text{ dpm } 100 \text{ L}^{-1}$ of ^{226}Ra per $\mu\text{mol L}^{-1}$ of Si and an intercept of $8.8 \text{ dpm } 100 \text{ L}^{-1}$, which is comparable with the average slope of 0.1 observed by Broecker et al. (1976) in the Atlantic. The Si-extrapolated ^{226}Ra and measured ^{226}Ra activities (data from this study and the TTO) show a relatively consistent result although the extrapolated ^{226}Ra has a larger uncertainty (± 11 % 2 SE) than the measured ^{226}Ra uncertainty (± 4 %, 2 SE). The paired t test shows a p value of 0.55 (> 0.05), suggesting that the differences between the extrapolated ^{226}Ra and the measured ^{226}Ra data are not statistically significant. The uncertainties of ^{226}Ra activity have been used in the error propagation of ^{228}Ra activity; the total uncertainty of ^{228}Ra is typically about 6 %–12 % (2 SE).

2.4 ^{228}Ra -derived 1-D mixing models

The distribution of seawater ^{228}Ra in the ocean is mainly controlled by mixing, advection, radioactive decay, and additional removal/input. It has been widely used as a tracer for measuring diffusion coefficients and advection rates on a basin-wide scale in the surface or at intermediate depths in the ocean (e.g. Cochran, 1992; Ku and Luo, 2008; Sanial et al., 2018). The one-dimensional (1-D) ^{228}Ra advection–diffusion model is commonly expressed by the following formula (e.g. Moore, 2015):

$$\frac{\partial A}{\partial t} = K_x \frac{\partial^2 A}{\partial x^2} - w \frac{\partial A}{\partial x} - \lambda A \pm J, \quad (1)$$

Table 1. ^{226}Ra and ^{228}Ra activities, $^{228}\text{Ra}/^{226}\text{Ra}$ activity ratios, and silica concentration.

Cruise	Stn	Long	Lat	Depth (m)	Sal (psu)	Temp (°C)	$^{226}\text{Ra}^a$ (dpm 100 L ⁻¹)	$^{228}\text{Ra}^b$ (dpm 100 L ⁻¹)	$^{228}\text{Ra}/^{226}\text{Ra}$ (activity ratio)	Si (μM)
D357	0	17.967	-34.183	5	35.49	17.80	8.3 ± 0.3	3.22 ± 0.23	0.390 ± 0.028	1.42
D357	1	17.050	-34.617	5	35.49	17.95	8.3 ± 0.3	2.94 ± 0.19	0.354 ± 0.023	2.58
D357	1	17.050	-34.617	20	35.49	17.92	8.6 ± 0.3	2.68 ± 0.16	0.312 ± 0.019	2.41
D357	1	17.050	-34.617	50	35.47	17.50	8.6 ± 0.3	2.94 ± 0.17	0.342 ± 0.020	3.64
D357	1	17.050	-34.617	100	35.29	14.27	9.4 ± 0.4	1.19 ± 0.09	0.127 ± 0.010	6.02
D357	1	17.050	-34.617	200	35.01	11.66	9.6 ± 0.4	0.80 ± 0.08	0.084 ± 0.008	6.77
D357	1	17.050	-34.617	400	34.60	7.91	11.6 ± 0.4	0.29 ± 0.05	0.025 ± 0.005	17.97
D357	1	17.050	-34.617	1600	34.82	2.73	(15.3 ± 1.7)	0.23 ± 0.06	0.015 ± 0.004	54.95
D357	1	17.050	-34.617	2580	34.86	2.35	(15.5 ± 1.8)	0.58 ± 0.11	0.037 ± 0.006	56.31
D357	2	15.000	-35.467	5	35.58	17.94	8.3 ± 0.3	2.71 ± 0.18	0.327 ± 0.021	2.75
D357	2	15.000	-35.467	50	35.58	17.94	8.2 ± 0.3	2.85 ± 0.19	0.347 ± 0.023	3.45
D357	2	15.000	-35.467	100	35.57	17.78	8.4 ± 0.3	2.73 ± 0.19	0.326 ± 0.022	3.40
D357	2	15.000	-35.467	400	35.25	13.31	9.3 ± 0.3	0.76 ± 0.08	0.082 ± 0.008	5.31
D357	3	13.117	-36.333	5	35.08	13.00	9.1 ± 0.3	1.52 ± 0.13	0.167 ± 0.014	2.01
D357	3	13.117	-36.333	10	35.08	13.00	9.1 ± 0.3	1.65 ± 0.22	0.182 ± 0.024	2.34
D357	3	13.117	-36.333	20	35.08	13.00	8.8 ± 0.3			2.46
D357	3	13.117	-36.333	50	35.00	12.62	(9.1 ± 1.0)	2.40 ± 0.37	0.264 ± 0.028	2.37
D357	3	13.117	-36.333	100	34.73	11.08	9.2 ± 0.3	1.24 ± 0.09	0.135 ± 0.010	2.71
D357	3	13.117	-36.333	200	34.65	10.26	9.3 ± 0.3	0.61 ± 0.05	0.065 ± 0.005	3.20
D357	3	13.117	-36.333	400	34.56	8.20	9.7 ± 0.3	0.41 ± 0.04	0.042 ± 0.004	9.52
D357	3	13.117	-36.333	1410	34.59	3.01	(16.5 ± 1.8)	0.29 ± 0.05	0.018 ± 0.002	64.46
D357	3	13.117	-36.333	1500	34.65	2.87	16.6 ± 0.6			66.06
D357	3	13.117	-36.333	4335	34.74	1.16	(21.2 ± 2.3)	0.74 ± 0.11	0.035 ± 0.003	104.23
D357	3	13.117	-36.333	4425	34.74	1.13	22.2 ± 0.7			105.61
D357	3	13.117	-36.333	4706	34.73	1.10	(21.5 ± 2.4)	0.65 ± 0.10	0.030 ± 0.003	106.90
D357	3	13.117	-36.333	4776	34.73	1.09	(21.6 ± 2.4)	1.89 ± 0.31	0.088 ± 0.011	107.65
D357	3	13.117	-36.333	4823	34.73	1.10	22.2 ± 0.7			123.30
D357	3	13.117	-36.333	4895	34.73	1.10	22.1 ± 0.7			125.26
D357	4	10.400	-38.400	5	34.84	11.78	9.2 ± 0.3	0.99 ± 0.11	0.108 ± 0.012	1.92
D357	4	10.400	-38.400	700	34.25	4.59	13.4 ± 0.5	0.26 ± 0.03	0.019 ± 0.003	20.07
D357	4.5	7.800	-39.217	5	35.17	13.85	8.6 ± 0.3	1.26 ± 0.10	0.146 ± 0.011	1.64
D357	4.5	7.800	-39.217	10	35.17	13.78	(9.0 ± 1.0)	1.08 ± 0.15	0.121 ± 0.010	1.67
D357	4.5	7.800	-39.217	20	35.17	13.71	8.6 ± 0.3			1.71
D357	4.5	7.800	-39.217	90	35.17	13.56	7.4 ± 0.3			1.59
D357	4.5	7.800	-39.217	200	34.97	11.87	10.6 ± 0.4	0.91 ± 0.07	0.086 ± 0.007	2.57
D357	4.5	7.800	-39.217	400	34.69	9.22	10.0 ± 0.3	0.69 ± 0.10	0.069 ± 0.010	6.92
D357	4.5	7.800	-39.217	600	34.36	6.17	(10.3 ± 1.1)	0.31 ± 0.05	0.030 ± 0.003	13.09
D357	4.5	7.800	-39.217	2500	34.83	2.55	16.6 ± 0.6			56.06
D357	4.5	7.800	-39.217	3241	34.84	2.22	(16.3 ± 1.8)	0.45 ± 0.08	0.027 ± 0.004	63.43
D357	4.5	7.800	-39.217	3500	34.83	2.09	18.9 ± 0.6			67.39
D357	4.5	7.800	-39.217	4241	34.76	1.33	(20.1 ± 2.2)	0.44 ± 0.07	0.022 ± 0.003	95.28
D357	4.5	7.800	-39.217	4500	34.74	1.16	22.2 ± 0.8			101.64
D357	4.5	7.800	-39.217	4741	34.74	1.16	(21.0 ± 2.3)	0.35 ± 0.08	0.017 ± 0.003	102.38
D357	4.5	7.800	-39.217	5000	34.73	1.15	22.2 ± 0.8			103.12
D357	4.5	7.800	-39.217	5141	34.73	1.16	(21.6 ± 2.4)	0.99 ± 0.15	0.046 ± 0.005	107.45
D357	4.5	7.800	-39.217	5211	34.73	1.17	(21.5 ± 2.4)	1.04 ± 0.15	0.048 ± 0.005	107.29
D357	4.5	7.800	-39.217	5231	34.73	1.18	22.4 ± 0.8			107.06
JC068	18	-42.416	-40.001	5	34.66	18.19	(8.8 ± 1.0)	2.15 ± 0.24	0.268 ± 0.006	0.15
JC068	18	-42.416	-40.001	170	34.43	7.83	(9.5 ± 1.0)	1.18 ± 0.14	0.134 ± 0.007	5.76
JC068	18	-42.416	-40.001	420	34.14	4.52	(9.9 ± 1.0)	1.52 ± 0.18	0.163 ± 0.005	9.15
JC068	19	-47.417	-39.994	5	34.72	18.59	(8.9 ± 1.0)	3.74 ± 0.42	0.463 ± 0.008	0.59
JC068	20	-51.029	-37.983	5	35.09	22.18	(9.0 ± 1.0)	3.95 ± 0.44	0.480 ± 0.004	1.53
JC068	21	-52.503	-37.026	5	36.03	23.91	(8.9 ± 1.0)	3.65 ± 0.40	0.446 ± 0.005	1.22
JC068	21	-52.503	-37.026	100	36.36	19.69	(8.9 ± 1.0)	2.12 ± 0.25	0.260 ± 0.010	1.16

Table 1. Continued.

Cruise	Stn	Long	Lat	Depth (m)	Sal (psu)	Temp (°C)	$^{226}\text{Ra}^a$ (dpm 100 L ⁻¹)	$^{228}\text{Ra}^b$ (dpm 100 L ⁻¹)	$^{228}\text{Ra}/^{226}\text{Ra}$ (activity ratio)	Si (μM)
JC068	21	-52.503	-37.026	200	35.81	16.43	(9.0 ± 1.0)	2.84 ± 0.33	0.344 ± 0.012	1.86
JC068	21	-52.503	-37.026	600	34.56	7.85	(10.1 ± 1.1)	1.02 ± 0.12	0.107 ± 0.004	10.66
JC068	22	-53.102	-36.538	5	30.26	23.00	(10.0 ± 1.1)	13.55 ± 1.49	1.441 ± 0.008	9.80
JC068	23	-53.337	-36.338	5	29.62	23.35	(10.0 ± 1.1)	14.08 ± 1.55	1.469 ± 0.008	11.04
JC068	24	-54.000	-36.000	5	28.48	23.06	(11.3 ± 1.2)	17.66 ± 1.95	1.599 ± 0.011	21.22
JC068	25	-54.560	-35.493	5	30.61	23.04	(9.2 ± 1.0)	12.76 ± 1.41	1.497 ± 0.013	3.68

^a Ra-226 activity in brackets is extrapolated from the ^{226}Ra -silica relationship in Fig. A1. ^b Ra-228 activity is calculated from the activity ratio of $^{228}\text{Ra}/^{226}\text{Ra}$ multiplied by ^{226}Ra activity. All errors are 2 standard errors.

where A is activity of ^{228}Ra , t is time, K_x is horizontal eddy diffusion coefficient, w is advection velocity, x is offshore distance, λ is decay constant ($\lambda_{\text{Ra}228} = 3.82 \times 10^{-9} \text{ s}^{-1}$), and J is additional input or removal of ^{228}Ra .

To use the model to accurately calculate the mixing rates, several assumptions need to be made.

2.4.1 Steady state ($\partial A / \partial t = 0$)

This assumption requires long-term monitoring of ^{228}Ra activities in the ocean due to the long half-life of ^{228}Ra . Charette et al. (2015) compared the ^{228}Ra data in the North Atlantic from the US GEOTRACES and the TTO programmes, and found that the upper ocean ^{228}Ra inventories have remained constant over the past 30 years. Although ^{228}Ra seasonality in coastal areas may introduce uncertainty to the mixing model, the assumption of steady state is likely to be valid for ^{228}Ra on decadal timescales and at ocean basin scales. The comparison between our ^{228}Ra data and the limited data from the TTO in this region shows good agreement (Fig. 2b), supporting this assumption for the South Atlantic.

2.4.2 No additional input or removal of ^{228}Ra ($\pm J = 0$)

Based on particle removal, Ra residence time is estimated to be ~ 500 years in the surface ocean (Moore and Dymond, 1991). However, there is no measurable particle removal of Ra in the surface open ocean at the timescale of ^{228}Ra half-life (5.75 years) (Moore, 2015). In theory, the distribution of seawater ^{228}Ra is controlled by both vertical and horizontal mixing. For example, vertical mixing could potentially introduce additional “removal” of ^{228}Ra from the surface water and affect the horizontal distribution of ^{228}Ra in the surface ocean, which would require 2-D models and a high sample resolution dataset to resolve the problem. However, vertical mixing ($\sim 0.1\text{--}1 \text{ cm}^2 \text{ s}^{-1}$) is typically 5 to 8 orders of magnitude smaller than horizontal mixing ($\sim 10^5\text{--}10^7 \text{ cm}^2 \text{ s}^{-1}$), and the sample resolution is not good enough for precise 2-D modelling in this study. Therefore, we only apply the 1-D model to estimate the maximum horizontal mixing rates by neglecting the term of downward mixing.

Similar assumptions need to be made for the ^{228}Ra -derived vertical mixing – the gradient of ^{228}Ra with depth mainly reflects the vertical mixing rates, and the vertical ^{228}Ra distribution is not affected by additional input of horizontal ^{228}Ra below the mixed layer. These assumptions are mostly true in the upper open ocean, where horizontal ^{228}Ra mainly comes from the continental margins (shelf and slope sediments) and there is a lack of other important ^{228}Ra sources in the middle of the ocean. However, if the lateral input becomes important and starts to interfere with the ^{228}Ra vertical profiles (e.g. receiving strong advective shelf water or profiles closer to the seafloor), the 1-D ^{228}Ra -derived vertical mixing rates can be significantly overestimated.

2.4.3 Boundary conditions ($A = A_0$ at $x = 0$ and $A = 0$ at $x \rightarrow \infty$)

It has been pointed out that the boundary condition of $A = 0$ at $x \rightarrow \infty$ is incorrect for using ^{228}Ra to determine coastal mixing as the distribution of ^{228}Ra could be controlled by water mass mixing within the coastal distance scale ($< 50 \text{ km}$) rather than eddy diffusion (Moore, 2000). In theory, this boundary condition may be valid on the ocean basin scale, as the major sink of ^{228}Ra in the ocean is radioactive decay. However, observed seawater ^{228}Ra is still not completely zero in the remote ocean. To avoid this problem, we follow the suggestion of Moore (2015) and define the ^{228}Ra excess ($^{228}\text{Ra}_{\text{ex}} = ^{228}\text{Ra} - ^{228}\text{Ra}_{\text{bg}}$) by subtracting the background value in the middle of the South Atlantic, $^{228}\text{Ra}_{\text{bg}}$: $0.23 \pm 0.06 \text{ dpm } 100 \text{ L}^{-1}$ (1 SE, $n = 6$). This value is determined by the average of the observed values at (1) the remote surface waters in a previous study around the 40° S transect (Hanfland, 2002; Fig. 1, ANT XV/4 station S8, S10, and S11); and (2) the water depth between 1000 and 3500 m in this study (except for 2580 m at Stn1 on the continental slope). The mid-depth ^{228}Ra background (1000–3500 m) shares a similar background as the remote surface waters ($\sim 0.2 \text{ dpm } 100 \text{ L}^{-1}$), suggesting that the ^{228}Ra background needs to be corrected in both horizontal and vertical mixing calculations. For comparison, the central North Atlantic shows a similar mid-depth ^{228}Ra background value

(~ 0.16 dpm 100 L^{-1}) between 1000 and 3000 m depth from the GEOTRACES GA03 transect (Stn12–20; Charette et al., 2015). However, the surface value in the central North Atlantic (~ 2.2 dpm 100 L^{-1}) is significantly higher than that in the South Atlantic (~ 0.2 dpm 100 L^{-1}), which has also been observed by Moore et al. (2008). We therefore use a background value of $^{228}\text{Ra}_{\text{bg}}$: 0.23 ± 0.06 dpm 100 L^{-1} determined from the South Atlantic.

The boundary condition can now be rewritten as $A_{\text{ex},0} = A_0 - A_{\text{bg}}$ at $x = 0$ and $A_{\text{ex}} = 0$ at $x = \infty$. Considering the assumptions discussed above, Eq. (1) can be written as

$$0 = K_x \frac{\partial^2 A_{\text{ex}}}{\partial x^2} - w \frac{\partial A_{\text{ex}}}{\partial x} - \lambda A_{\text{ex}}. \quad (2)$$

In this study, we consider two scenarios in the horizontal ^{228}Ra calculations: (1) mixing only ($w = 0$) and (2) advection only ($K_x = 0$). We use these two scenarios to provide independent assessments of chemical fluxes in the surface ocean, to bracket the range of possible TE fluxes that are consistent with the ^{228}Ra data regardless of the combination of mixing and advection in the real ocean. The advection model is only applied to the Argentine Basin data after the shelf break where the advection signal is strong because of the Brazil Current. Although the advection only scenario is an unrealistic one, it provides an end-member for comparisons of TE fluxes under different settings. Using the boundary conditions, $A_{\text{ex},0} = A_0 - A_{\text{bg}}$ at $x = 0$ and $A_{\text{ex}} = 0$ at $x = \infty$, Eq. (2) can be solved for diffusive mixing only:

$$A_{\text{ex}} = A_{\text{ex},0} \exp(-ax), \quad \text{where } a = \sqrt{\lambda/K_x}, \quad (3)$$

and for advection only:

$$w = \lambda x / \ln(A_{\text{ex},0}/A_{\text{ex}}) = X_{1/2}/T_{1/2}, \quad (4)$$

where $A_{\text{ex},0}$ is the activity of $^{228}\text{Ra}_{\text{ex}}$ at $x = 0$ (i.e. Stn0 or Stn25); $X_{1/2}$ is the distance at which $A_{\text{ex}} = 0.5A_{\text{ex},0}$; and $T_{1/2}$ is the half-life of ^{228}Ra (5.75 years). The exponential fit of the surface ^{228}Ra data provides the estimate of the maximum diffusion coefficients (K_x) at both ends of the transect, and the linear fit of the surface ^{228}Ra data after the shelf break in the Argentine Basin provides the minimum estimate of the advection water transport (w) along the west end of the transect (see discussion below).

For vertical mixing, the calculation of K_z is based on a situation in which ^{228}Ra is mixed horizontally away from the coast in the surface mixed layer and then down into the subsurface. The 1-D mixing model can therefore be applied to the depth profiles of ^{228}Ra to calculate K_z near the surface ocean. Under similar boundary conditions $A_{\text{ez},0} = A_0 - A_{\text{bg}}$ at $z = 0$ and $A_{\text{ez}} = 0$ at $z = \infty$, the diffusion equation can be solved for vertical mixing to fit the vertical ^{228}Ra profiles:

$$A_{\text{ez}} = A_{\text{ez},0} \exp(-az), \quad \text{where } a = \sqrt{\lambda/K_z}, \quad (5)$$

where $A_{\text{ez},0}$ is the activity of $^{228}\text{Ra}_{\text{ex}}$ at $z = 0$ (i.e. the mixed layer). In the 1-D mixing model, the term for diapycnal ad-

vection is generally negligible, as the oceanic vertical advection velocity is usually very small, i.e. 10^{-3} – 10^{-5} cm s^{-1} (Liang et al., 2017).

2.5 Trace element flux calculations

In this study, we use three different ^{228}Ra approaches to quantify the horizontal and diffusive vertical dTE fluxes in the Cape Basin and Argentine. More details of the calculations are provided in Appendix D.

2.5.1 ^{228}Ra -derived diffusive TE fluxes

To calculate both lateral and vertical TE fluxes, the ^{228}Ra -derived diffusion coefficients (K_z or K_x) are applied to Fick's first law of molecular diffusion in the following equation:

$$F_{\text{TE}-d} = K_{x \text{ or } z} (\Delta\text{TE}/\Delta x \text{ or } \Delta z), \quad (6)$$

where $F_{\text{TE}-d}$ is the diffusive flux of the TEs, and $\Delta\text{TE}/\Delta x$ or Δz is the gradient of TE concentration over either the horizontal distance x to the coasts or the vertical depth z below the mixed layer, which can be obtained from the linear regression of horizontal and vertical TE profiles (Sect. 3.2).

2.5.2 ^{228}Ra -derived advective TE fluxes

Surface water after the boundary of the shelf break and the Brazil Current in the Argentine Basin carries strong offshore advection signals along the SAC towards the open ocean (Fig. 1). Assuming that the mixing of TE is conservative, the advective TE fluxes can be calculated using the following equation:

$$F_{\text{TE}-a} = w \cdot [\text{TE}]_{\text{ave}-0}, \quad (7)$$

where $F_{\text{TE}-a}$ is the offshore advective flux of TE, w is the net offshore advection velocity along the SAC in the Argentine Basin, and $[\text{TE}]_{\text{ave}-0}$ is the average concentrations of dissolved TEs in the initial advective waters around where the Brazil Current merges into the SAC (around Stn21).

2.5.3 TE/ ^{228}Ra -ratio-derived TE fluxes

Previous studies have combined the use of the shelf ^{228}Ra fluxes with the ratios of TE/ ^{228}Ra in the surface waters between continental shelves and open oceans to estimate the shelf–ocean TE inputs from the continental margins to the open oceans (Charette et al., 2016; Sanial et al., 2018; Vieira et al., 2020). This method provides the integrated net fluxes of TEs, considering all the possible inputs (e.g. rivers, SGD, and sediments) and outputs (e.g. particle scavenging, biological uptake, and radioactive decay) of ^{228}Ra and TEs during water mixing between the continental shelf and the open ocean. More details of the method are given in Charette et al. (2016). In brief, assuming that the net shelf–ocean exchange is mainly driven by eddy diffusion, the cross-shelf

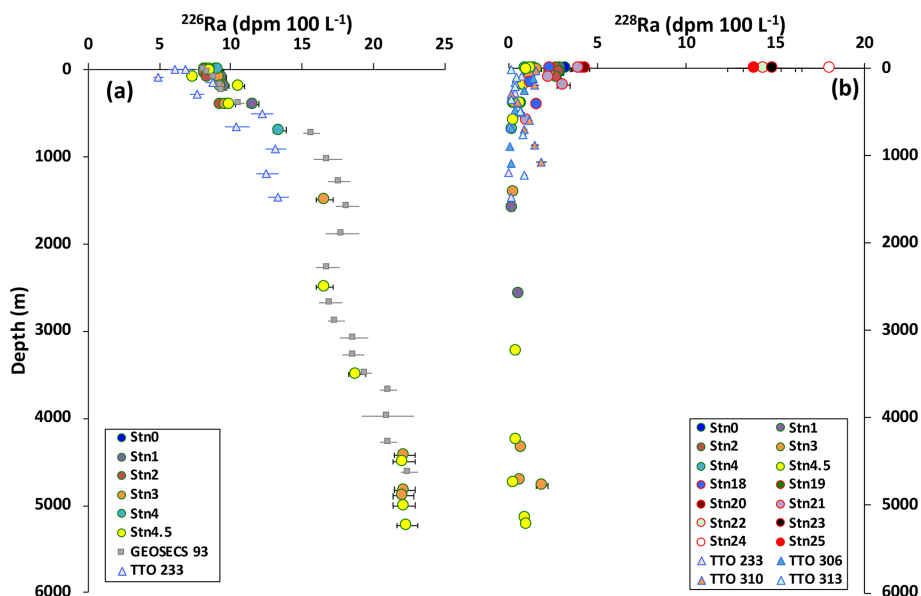


Figure 2. Depth profiles of (a) ^{226}Ra and (b) ^{228}Ra activities. The grey squares show Ra data from the previous GEOSECS study (Ku and Lin, 1976); the triangles show Ra data from the TTO programme (Key et al., 1990, 1992a, b). Different water masses are characterised in the (a) ^{226}Ra profile (see details in text). Error bars are ± 2 SE.

TE fluxes can be calculated using the following equation:

$$F_{\text{TE}} = F_{228\text{Ra}} \cdot \left(\frac{\Delta \text{TE}}{\Delta ^{228}\text{Ra}} \right) = F_{228\text{Ra}} \cdot \left(\frac{\text{TE}_{\text{shelf}} - \text{TE}_{\text{ocean}}}{^{228}\text{Ra}_{\text{shelf}} - ^{228}\text{Ra}_{\text{ocean}}} \right), \quad (8)$$

where $F_{228\text{Ra}}$ is the cross-shelf ^{228}Ra flux (Appendix D); TE_{shelf} and $^{228}\text{Ra}_{\text{shelf}}$ are the average concentrations of the TE and ^{228}Ra in the surface waters on the shelf (GA10W: between Stn23 and Stn25; GA10E: between Stn0 and Stn1), respectively; and TE_{ocean} and $^{228}\text{Ra}_{\text{ocean}}$ are the average concentrations in the open ocean (GA10W: between Stn18 and Stn19; GA10E: between Stn4 and Stn4.5). The ratios of $\Delta \text{TE} / \Delta ^{228}\text{Ra}$ are reported in Table D1 in Appendix D.

3 Results

3.1 Ra isotope concentrations

The results of ^{226}Ra and ^{228}Ra activities and the activity ratios of $^{228}\text{Ra} / ^{226}\text{Ra}$ are presented in Table 1 (with ± 2 SE). The vertical profiles of measured ^{226}Ra show good agreement with the data from the closest GEOSECS and TTO stations in this region (e.g. Ku and Lin, 1976; Key et al., 1990, 1992a, b) (Fig. 2a). Ra-226 activities range from 8.2 to 22.4 dpm 100 L⁻¹. In this study, the results of ^{226}Ra are mainly used for calculating ^{228}Ra activities, and will not be discussed in further detail.

The activity ratios of $^{228}\text{Ra} / ^{226}\text{Ra}$ range from 0.017 to 1.599 in the surface water and are comparable with

the ratios from 0.080 to 2.810 observed in previous studies in this region (TTO data, Windom et al., 2006; Hanfland, 2002). The vertical profiles of ^{228}Ra activity are shown in Fig. 2b. In surface waters, the activities of ^{228}Ra ranging from 1.02 to 17.66 dpm 100 L⁻¹ in the Argentine Basin are consistent with the observed values from 0.07 to 24.0 dpm 100 L⁻¹ from the previous studies (TTO data and Windom et al., 2006), and the activities of ^{228}Ra ranging from 0.99 to 3.22 dpm 100 L⁻¹ in the Cape Basin are consistent with the observed values from 0.67 to 4.23 dpm 100 L⁻¹ from the previous study (Hanfland, 2002). Between 600 and 4000 m, $^{228}\text{Ra} / ^{226}\text{Ra}$ ratios decrease to 0.015–0.030 and ^{228}Ra activities decrease to 0.29–0.32 dpm 100 L⁻¹. In the 100 m closest to the ocean floor, the ratios of $^{228}\text{Ra} / ^{226}\text{Ra}$ increase to 0.048–0.088 and the activities of ^{228}Ra also increase to 1.07–1.94 dpm 100 L⁻¹. This is the first dataset of seawater ^{228}Ra reported in the intermediate and deep waters in the Cape Basin. The ^{228}Ra values in the Cape Basin are noticeably higher than those observed in intermediate (< 0.1 dpm 100 L⁻¹) and deep waters (0.22–0.28 dpm 100 L⁻¹) to the south in the Southern Ocean (Charette et al., 2007; van Beek et al., 2008). The vertical profiles of seawater ^{228}Ra in the Cape Basin are consistent with GEOSECS and TTO observations elsewhere in the South Atlantic Ocean (Moore et al., 1985). The samples collected by pump (fish), CTD, and SAP within the mixed layer at each station show consistent ^{228}Ra and ^{226}Ra results, suggesting that there is no significant difference in the Ra results between these three sampling methods.

3.2 Micronutrient concentrations

Dissolved Co, Fe, and Zn concentration data (Wyatt et al., 2014, 2020; Browning et al., 2014; Clough et al., 2016; Schlitzer et al., 2018) are summarised in Appendix B (Tables B1 and B2). At the continental margins, surface shelf waters show much higher trace element concentrations (Co: 146.2 pM, Fe: 1.53 nM, and Zn: 0.59 nM in the Argentine Basin margin; Co: 46.9 pM, Fe: 0.35 nM, and Zn: 0.14 nM in the Cape Basin margin) than observed in the open-ocean surface waters along the 40° S transect (Fig. 3). In the Argentine Basin, the distribution of trace elements generally follows the salinity in the surface waters. The low-salinity waters (< 29 psu) around 200 km from the South America coast show high TE concentrations (Co: > 80 pM, Fe: > 1 nM, and Zn: > 0.5 nM). In contrast, the high-salinity waters (> 35 psu) in the Brazil Current show much lower TE concentrations (Co: < 60 pM, Fe: < 0.5 nM, and Zn: < 0.2 nM). Similar correlations between trace elements and salinity have been observed along other western boundaries of the Atlantic as well (e.g. the North American shelf; Bruland and Franks, 1983; Noble et al., 2017). In the upper ocean (< 600 m), these trace element concentrations are generally low in the surface mixed layer and increase with depth below the mixed layer (Fig. 4). Co concentrations range from 1.6 to 61.2 pM, and Fe and Zn concentrations range from 0.05 to 0.54 and 0.01 to 0.53 nM, respectively. In general, these trace element concentrations (< 600 m) are slightly higher in Stn1 than other stations further away from the continental shelf.

4 Discussion

4.1 ²²⁸Ra-derived horizontal mixing and advection

4.1.1 Argentine Basin

The distribution of ²²⁸Ra_{ex} in the Argentine Basin (GA10W) is controlled by the Rio de la Plata river plume and the Brazil Current (Fig. 5a), and this is supported by a good correlation with salinity (linear regression $R^2 = 0.96$; Fig. C1 in Appendix C). If we apply the 1-D mixing model (Eq. 3) to fit the ²²⁸Ra_{ex} data between Stn25 and Stn21, across the boundary of the Brazil Current, the gradient of the exponential fit (a) is 0.0047 ± 0.0027 and the estimate of the offshore horizontal diffusion coefficient K_x is $1.8 \pm 1.4 \times 10^6 \text{ cm}^2 \text{ s}^{-1}$, which is likely to be an overestimate due to the influence of the river plume and the advection of the boundary current. Nevertheless, this estimate is still within the range of other estimates of K_x between 10^5 and $10^8 \text{ cm}^2 \text{ s}^{-1}$ in a variety of margin and open-ocean settings (e.g. Kaufman et al., 1973; Knauss et al., 1978; Yamada and Nozaki, 1986).

Across the boundary of the Brazil Current, the advection of the eastward flowing SAC shows a significant impact on the distribution of ²²⁸Ra_{ex} in the surface Argentine Basin (Fig. 5a). If we apply the 1-D advection model

(Eq. 4) to fit the data between Stn21 and Stn18 (Fig. 5a), the $X_{1/2}$ is $1116 \pm 600 \text{ km}$ (from Stn 21) and the estimate of average advection velocity w is $0.6 \pm 0.3 \text{ cm s}^{-1}$. Although the ²²⁸Ra-derived velocity is smaller than the typical velocities ($2\text{--}4 \text{ cm s}^{-1}$) around the South Atlantic subtropical gyre (Schlitzer, 1996), similar advective ²²⁸Ra signals have been previously observed in other surface ocean current systems, including the Peru and Kuroshio currents in the Pacific (Knauss et al., 1978; Yamada and Nozaki, 1986).

4.1.2 Cape Basin

Ra-228 data from the Cape Basin transect (GA10E) are used to calculate the offshore horizontal diffusion coefficient (K_x) in the Cape Basin (Fig. 5b). Applying the simple 1-D mixing model, assuming $w = 0$, to fit the surface ²²⁸Ra_{ex} data in the Cape Basin (Fig. 5b), the gradient of the exponential fit (a) is 0.0012 ± 0.0003 and the estimate of K_x is $2.7 \pm 0.8 \times 10^7 \text{ cm}^2 \text{ s}^{-1}$, which is an order of magnitude higher than the value observed in the Argentine Basin (see above) but within the range of other observed values in the oceans ($10^5\text{--}10^8 \text{ cm}^2 \text{ s}^{-1}$).

The horizontal diffusion coefficient K_x is likely to be overestimated in the Cape Basin due to the influence of episodic water advection. The Agulhas Current leakage (ACL) is known for transporting water from the Indian Ocean into the South Atlantic and episodically introduces eddies (Agulhas rings) into the Cape Basin (Beal et al., 2011). However, the signals of mixing and advection cannot be easily separated with the ²²⁸Ra data alone (Fig. 5b). For example, the distribution of ²²⁸Ra_{ex} in the surface Cape Basin shows elevated values (Stn2 and Stn4.5) above the fitted curve and coincides with the elevated salinity and temperature data (Fig. 5d), which indicates that the elevated ²²⁸Ra_{ex} is likely to come from an advective signal (e.g. ACL). The ACL signal has also been identified with a distinct Pb isotope signature in the upper water column at Stn2 (Paul et al., 2015). The application of a 1-D mixing model may actually be biased by the addition of these high ²²⁸Ra_{ex} waters; therefore, the horizontal diffusion coefficient K_x is likely to be a maximum estimate for the Cape Basin. Nevertheless, the overall gradient of ²²⁸Ra_{ex}, decreasing along the distance away from the shore, is driven by the loss of ²²⁸Ra through both water mixing and radioactive decay.

Despite uncertainty in the diffusion coefficients due to advection of other sources, the ²²⁸Ra data do place bounds on maximum horizontal mixing in the surface ocean away from the eastern and western boundaries of the Atlantic at 40° S. These bounds can be used to quantify the trace element inputs from the continental margins to the South Atlantic (see Sect. 4.3).

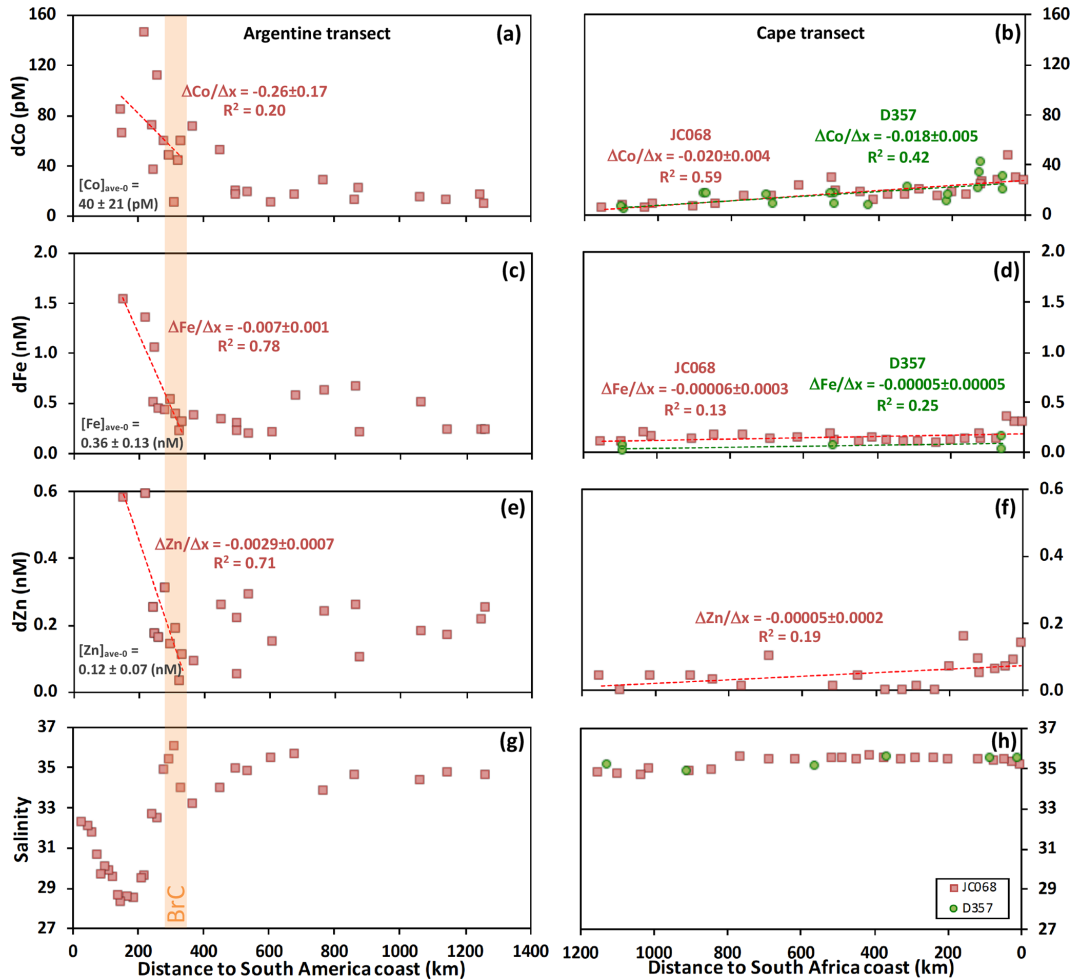


Figure 3. Dissolved trace elements (dCo, dFe, and dZn) and salinity in the surface water (< 10 m) along the 40° S Argentine and Cape Basin transects. Red squares show data from cruise JC068, and green circles show data from cruise D357. The orange band indicates the boundary of the BrC in the Argentine Basin transect, highlighted by high salinity and changing TE gradients. $[TE]_{ave-0}$ is the average concentrations of dissolved TEs in the initial advective waters around where the Brazil Current merges into the SAC (around Stn21; ± 1 SD, $n = 4$). The dashed lines show linear regression trends through the TE data (Argentine Basin transect: only data from the shelf to BrC; Cape Basin transect: the whole transect), and the gradient ($\Delta TE/\Delta x$) errors are ± 1 SD.

4.2 ^{228}Ra -derived vertical mixing

Vertical diffusion coefficients (K_z) are calculated at six stations where the depth profiles of $^{228}\text{Ra}_{ex}$ are available (Stn1, Stn2, Stn3, Stn4.5, Stn18, and Stn21). The best-fit exponential curve gradients (a) from the depth (z) profiles of $^{228}\text{Ra}_{ex}$ activities below the surface mixed layer are used in the same 1-D mixing model (Eq. 5) to calculate the vertical mixing coefficient K_z for the upper ≈ 600 m of each station in both the Argentine and Cape basins (Fig. 6), and resulting K_z values range from 1 to 53 $\text{cm}^2 \text{s}^{-1}$ at these stations. It should be noted that Stn2 only has one Ra data point below the mixed layer, and hence it is not considered in the vertical TE input calculations (Sect. 4.3), but the estimate of K_z shows a similar value as other stations with more data points. The high K_z values of 53 $\text{cm}^2 \text{s}^{-1}$ and 7 $\text{cm}^2 \text{s}^{-1}$ at Stn18 and Stn21,

respectively, are most likely biased by the lateral inputs of ^{228}Ra below the mixed layer (see later discussion). Excluding the values of Stn18 and Stn21, the range of K_z values from 1.0 to 1.7 $\text{cm}^2 \text{s}^{-1}$ is broadly comparable to the average K_z of 1.5 $\text{cm}^2 \text{s}^{-1}$ assessed from tritium measurements in the South Atlantic (Li et al., 1984). These estimates are also consistent with the range of observed vertical mixing from 0.1 to 10 $\text{cm}^2 \text{s}^{-1}$ using different methods (e.g. ^7Be , SF_6 dye release and microstructure shear probe methods) in different ocean basin settings (Kunze and Sanford, 1996; Ledwell et al., 1993; Martin et al., 2010; Painter et al., 2014; Kadko et al., 2020).

Given that the calculation of K_z is based on the vertical gradients of ^{228}Ra driven by vertical mixing and radioactive decay only, it therefore relies on the assumption that the vertical gradients are not dominated by lateral input of ^{228}Ra

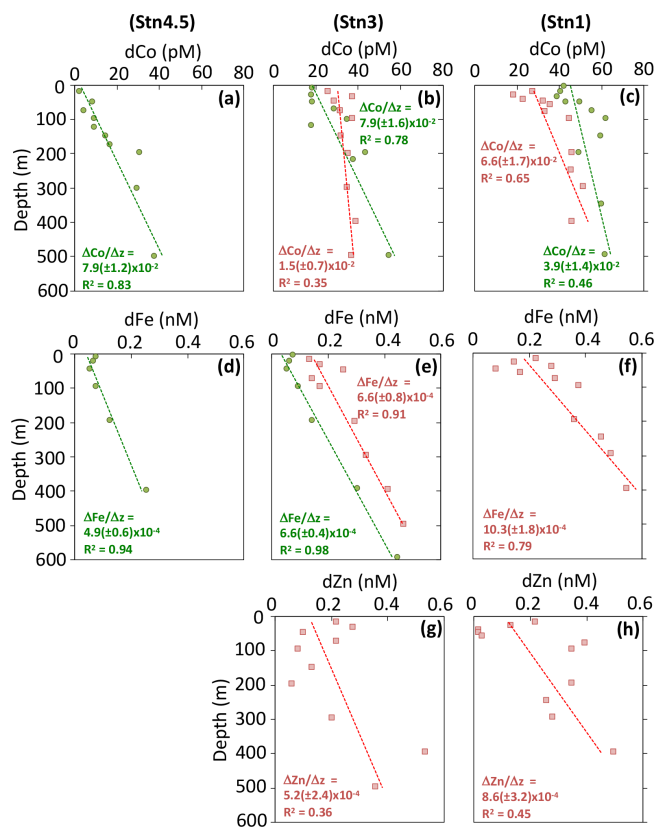


Figure 4. Depth profiles of dissolved trace elements (dCo, dFe, and dZn) in the upper ocean (< 600 m). Red squares show data from cruise JC068, and green circles show data from cruise D357. The dashed lines show linear regression trends, and the vertical gradient ($\Delta\text{TE}/\Delta z$) errors are ± 1 SD.

at depths below the surface mixed layer. This assumption is supported by an inspection of horizontal ^{228}Ra gradients at depths below the mixed layer (Fig. 7). Due to the sample resolution, detailed inspection is only available for the Cape Basin. Here, unlike the exponential change seen in the surface layer, $^{228}\text{Ra}_{\text{ex}}$ activities at 50 m and deeper do not show an increasing gradient towards the continental margin. This therefore argues against lateral mixing away from the shore as the major mechanism driving subsurface ^{228}Ra concentrations in the Cape Basin. In addition, the distribution of ^{228}Ra on an isopycnal surface (≈ 200 m depth) is largely constant and shows no lateral gradient (Fig. 7). Studies using theoretical models to simulate seawater ^{228}Ra distribution have also shown that the horizontal eddy mixing (K_x) has little effect on the vertical distribution of ^{228}Ra (Lamontagne and Webster, 2019).

The depth profiles of $^{228}\text{Ra}_{\text{ex}}$ in the Argentine Basin show evidence of advective ^{228}Ra below the mixed layer, potentially from the nearer-shore shelf waters. For example, elevated $^{228}\text{Ra}_{\text{ex}}$ values are seen around 400 m at Stn18 and 200 m at Stn21 (Fig. 6a and b) and these may explain the extremely high K_z values at these stations. Although the pos-

sibility of lateral inputs cannot be entirely excluded, particularly in the Argentine Basin, the vertical variation of ^{228}Ra near the surface mixed layer still provides the first estimates of maximum vertical mixing and the upper limits of trace element inputs from vertical mixing to the surface ocean along the 40° S transect.

4.3 Trace element inputs in the South Atlantic

TEs are important micronutrients for marine productivity in the surface ocean. Atmospheric dust deposition is an important source of TEs to the surface ocean. The soluble atmospheric dust deposition fluxes to the surface 40° S Atlantic transect have been assessed from the same cruise as this study: these are 0.02 – 0.05 $\text{nmol Co m}^{-2} \text{d}^{-1}$, 1.6 – 5.2 $\text{nmol Fe m}^{-2} \text{d}^{-1}$ and 0.6 – 6 $\text{nmol Zn m}^{-2} \text{d}^{-1}$ (Chance et al., 2015). However, other inputs of these TEs to the euphotic zone in the South Atlantic are still unknown (e.g. shelf–ocean and vertical mixing). In this study, we consider three different ^{228}Ra approaches to quantify the horizontal and vertical TE fluxes in the Cape Basin and Argentine Basin along the 40° S transect: (1) ^{228}Ra -derived diffusive, (2) ^{228}Ra -derived advective, and (3) TE/ ^{228}Ra -ratio-derived TE fluxes (Sect. 2.5 and Appendix D). The results of the TE fluxes are summarised in Table 2 (shelf–ocean, horizontal) and Table 3 (vertical). For comparison, the horizontal TE fluxes are normalised to the areas of shelf–ocean cross section (Table D2; Urien and Ewing, 1974; Nelson et al., 1998; Emery, 1966; Windom et al., 2006; Carr and Botha, 2012; Hooker et al., 2013; Vieira et al., 2020) (illustrated in Fig. 8) unless otherwise specified.

Surprisingly, the estimates of shelf–ocean TE fluxes show relatively good agreements (within uncertainties) between these three approaches (Table 2), given the limitations of the 1-D ^{228}Ra -mixing model (Moore, 2015). A similar observation has also been found in the ^{228}Ra study in the Peruvian continental shelf (Sanial et al., 2018), which suggests that the assumptions made for the 1-D ^{228}Ra -mixing model are reasonable. In addition, the TE fluxes show consistent results between the D357 and JC068 data in the Cape Basin. These observations are likely to be a result of the gradients of ^{228}Ra and TEs representing a long-term average at an ocean basin scale and being closer to a steady-state condition in the upper water column (e.g. the ^{228}Ra and TEs in the North Atlantic; Charette et al., 2015).

The ^{228}Ra -derived shelf–ocean Co fluxes range from 4 to 21×10^3 $\text{nmol m}^{-2} \text{d}^{-1}$ in the Argentine Basin margin and from 4.3 to 6.2×10^3 $\text{nmol m}^{-2} \text{d}^{-1}$ in the Cape Basin margin of the 40° S transect in the South Atlantic. In comparison, previous studies have applied the TE/ ^{228}Ra approach to estimate the shelf Co fluxes in several continental margins: the western North Atlantic (1.6×10^5 $\text{nmol m}^{-2} \text{d}^{-1}$; Charette et al., 2016), the Peruvian shelf (1.4×10^5 $\text{nmol m}^{-2} \text{d}^{-1}$, Sanial et al., 2018) and the Congo offshore 3° S (2.8×10^6 $\text{nmol m}^{-2} \text{d}^{-1}$; Vieira et al., 2020). Although these fluxes

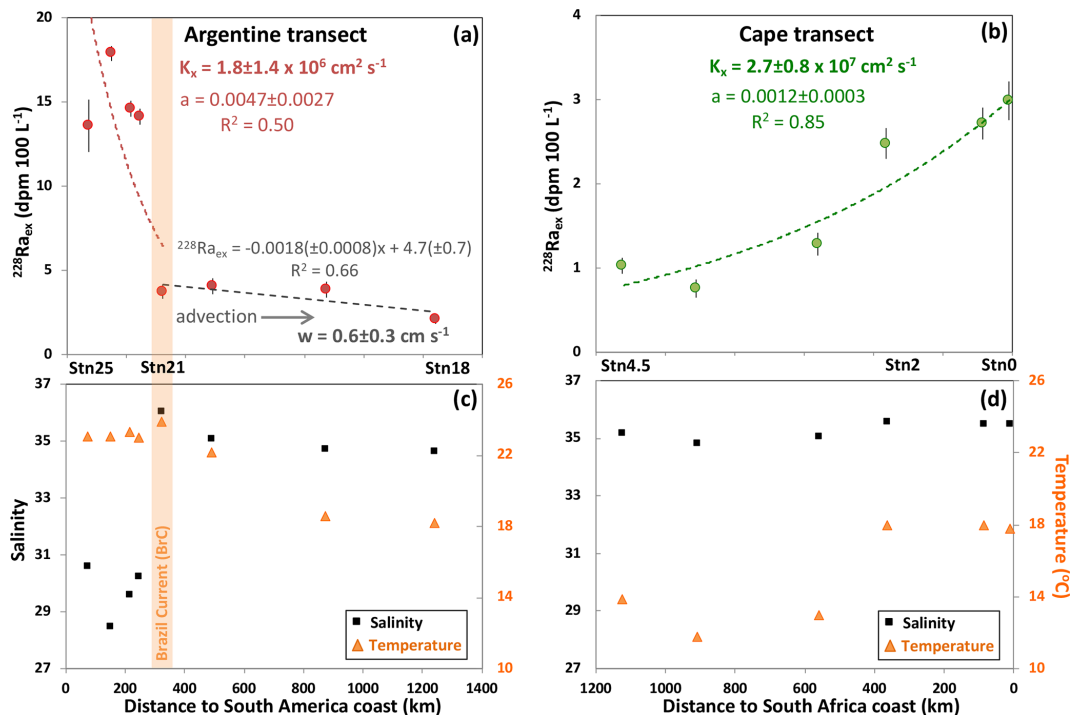


Figure 5. Plots of $^{228}\text{Ra}_{\text{ex}}$ in the surface ocean (< 10 m) along the (a) Argentine and (b) Cape Basin 40° S Atlantic transects, with the distributions of salinity and temperature shown in panels (c) and (d). The orange band indicates the boundary of the BrC in the Argentine Basin transect, highlighted by high salinity and temperature. The dashed red and green lines show exponential regression trends through the $^{228}\text{Ra}_{\text{ex}}$ data (Argentine Basin transect: only to BrC; Cape Basin transect: the whole transect). The gradients of the exponential fit (the a values) are used in Eq. (3) for the K_X calculation. The errors of a and K_X are ± 1 SD. The dashed grey line shows a linear regression trend through the $^{228}\text{Ra}_{\text{ex}}$ data from BrC to the open ocean in the Argentine Basin transect, which is used in Eq. (4) to estimate the advection water transport velocity (w).

Table 2. ^{228}Ra -derived shelf–ocean dTE fluxes along the 40° S Atlantic transect*.

dTE flux	dCo ($10^3 \text{ nmol m}^{-2} \text{ d}^{-1}$)	dFe ($10^4 \text{ nmol m}^{-2} \text{ d}^{-1}$)	dZn ($10^4 \text{ nmol m}^{-2} \text{ d}^{-1}$)
(1) ^{228}Ra -derived diffusive fluxes			
Argentine Basin margin (JC068)	4.0 ± 4.2	11 ± 9	4.4 ± 3.7
Cape Basin margin (JC068)	4.7 ± 1.6	1.5 ± 0.9	1.2 ± 0.7
Cape Basin margin (D357)	4.3 ± 1.8	1.2 ± 1.3	
(2) ^{228}Ra -derived advective fluxes			
Argentine Basin margin (JC068)	21 ± 16	19 ± 13	6.3 ± 4.9
(3) TE/ ^{228}Ra -ratio-derived fluxes			
Argentine Basin margin (JC068)	5.7 ± 4.0	7.9 ± 5.1	2.7 ± 1.5
Cape Basin margin (JC068)	6.2 ± 4.0	3.1 ± 2.2	0.9 ± 1.1

* Fluxes are normalised to the area of the cross-shelf section. All errors are ± 1 SD.

are about 1 and 2 orders of magnitude, respectively, higher than the estimates in the South Atlantic, these regions are also associated with low oxygen which increases dissolution of Mn and Fe oxides in sediments and is prone to result in higher Co fluxes (e.g. Hawco et al., 2016). A low shelf–ocean Co flux has been reported in the eastern South Atlantic conti-

ental shelf ($11\text{--}18 \times 10^3 \text{ nmol m}^{-2} \text{ d}^{-1}$; Bown et al., 2011), which is very close to this study region in the Cape Basin.

Along the 40° S transect, the ^{228}Ra -derived shelf–ocean Fe fluxes range from 8 to $19 \times 10^4 \text{ nmol m}^{-2} \text{ d}^{-1}$ in the Argentine Basin margin and from 1.2 to $3.1 \times 10^4 \text{ nmol m}^{-2} \text{ d}^{-1}$ in the Cape Basin margin, which are slightly lower than the es-

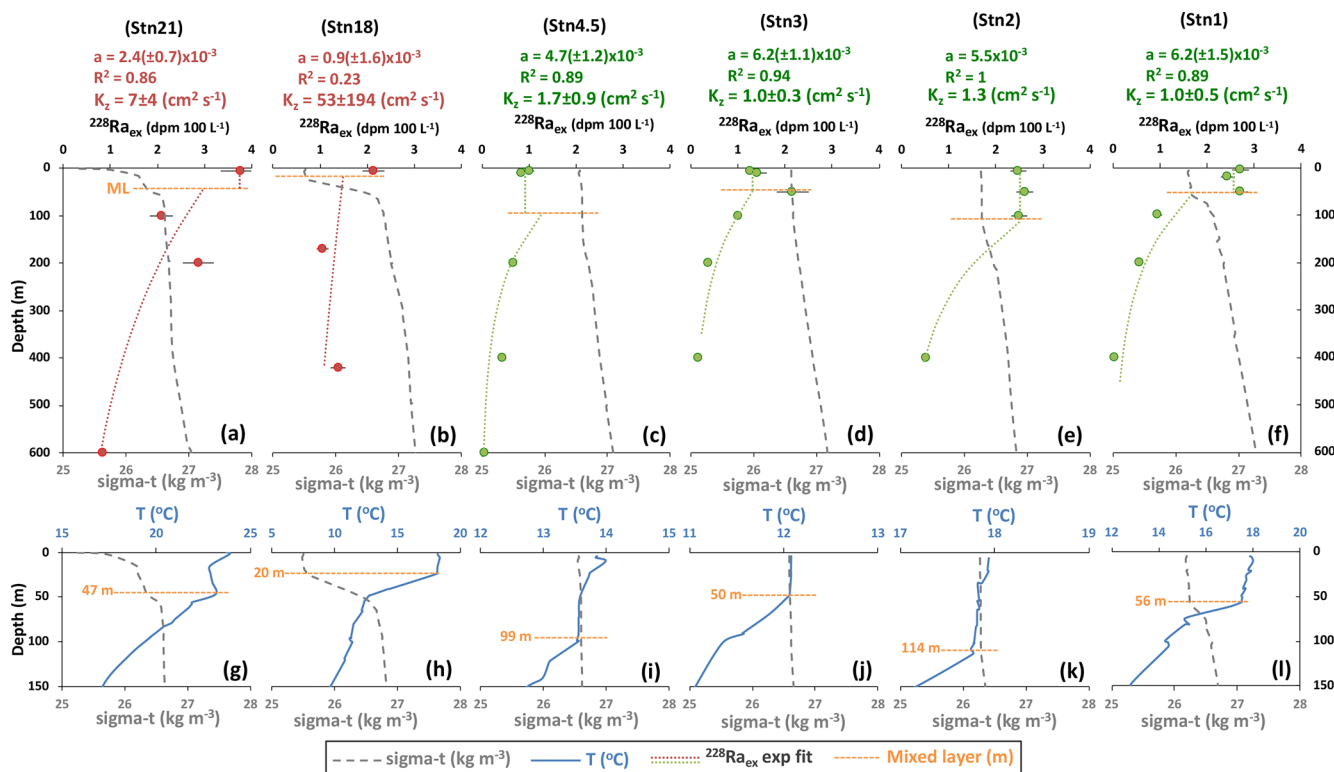


Figure 6. Depth profiles of (a–f) seawater $^{228}\text{Ra}_{\text{ex}}$ activity in red (Argentine Basin) and green (Cape Basin) circles and density (sigma- t) shown in dashed grey lines, and (g–i) density and temperature in the upper ocean shown at Stn1, 2, 3, 4.5, 18, and 21. Depths of the mixed layer are labelled with the horizontal dashed orange lines, defined by the sigma- t and temperature profiles. The dashed red and green lines show exponential regression trends through the $^{228}\text{Ra}_{\text{ex}}$ data below the mixed layer (including the average value of the mixed layer). The gradients of the exponential fit (the a values) are used in Eq. (5) for the K_z calculation (errors ± 1 SD).

Table 3. ^{228}Ra -derived vertical dTE fluxes along the 40° S Atlantic transect*.

dTE flux		dCo (nmol m ⁻² d ⁻¹)	dFe (nmol m ⁻² d ⁻¹)	dZn (nmol m ⁻² d ⁻¹)
Station	Stn1 (JC068)	0.6 ± 0.3	11 ± 6	7 ± 5
	Stn1 (D357)	0.3 ± 0.2		
	Stn3 (JC068)	0.1 ± 0.1	6 ± 2	5 ± 3
	Stn3 (D357)	0.7 ± 0.3	6 ± 2	
	Stn4.5 (D357)	1.2 ± 0.6	7 ± 4	

* Fluxes are normalised to the surface area. All errors are ± 1 SD.

imates of the shelf–ocean Fe flux (4.5×10^5 nmol m⁻² d⁻¹) in the western North Atlantic (Charette et al., 2016). However, these fluxes are significantly lower than those high Fe fluxes observed in regions with river plumes (e.g. Congo River; 4.1×10^8 nmol m⁻² d⁻¹; Vieira et al., 2020), submarine groundwater discharge (1.3×10^8 nmol m⁻² d⁻¹, Windom et al., 2006) and the oxygen minimum zone (2.1×10^6 nmol m⁻² d⁻¹, Sanial et al., 2018).

Lastly, the ^{228}Ra -derived shelf–ocean Zn fluxes range from 2.7 to 6.3×10^4 nmol m⁻² d⁻¹ in the Argentine and from 0.9 to 1.2×10^4 nmol m⁻² d⁻¹ in the Cape Basin mar-

gins. When compared with the only available shelf–ocean Zn flux value (1.8×10^6 nmol m⁻² d⁻¹) in the western North Atlantic (Charette et al., 2016), the Zn fluxes from this study indicate low Zn inputs in the South Atlantic. The different shelf–ocean Zn inputs between the North and South Atlantic require more detailed study to understand the processes supplying and removing Zn in the shelf waters and the influence of anthropogenic Zn. Nevertheless, the low Zn inputs support the previous observation that surface water along the 40° S transect has some of the lowest reported dissolved Zn concentrations in the global oceans (Wyatt et al., 2014).

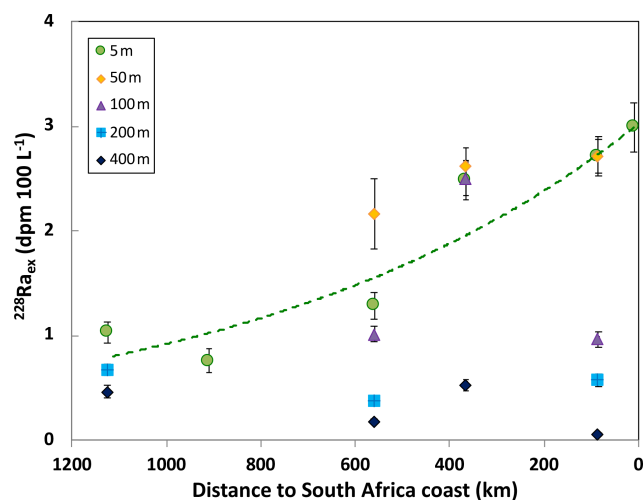


Figure 7. Plots of $^{228}\text{Ra}_{\text{ex}}$ activity at water depths of 5, 50, 100, 200, and 400 m versus distance to the coast of Cape Town in South Africa. The dashed line shows an exponential regression line through the data at 5 m.

From below the mixed layer, the vertical dissolved TE fluxes range from 0.1 to 1.2 nmol Co m⁻² d⁻¹, from 6 to 9 nmol Fe m⁻² d⁻¹, and from 5 to 7 nmol Zn m⁻² d⁻¹ along the 40° S transect (Table 3). These fluxes are consistent with previous estimates of Co in the South Atlantic (0.04–0.46 nmol m⁻² d⁻¹, Bown et al., 2011; 0.1–4 nmol m⁻² d⁻¹, Rigby et al., 2020) and in the high-latitude North Atlantic (0.15–0.5 nmol m⁻² d⁻¹, Achterberg et al., 2020), of Fe in the North Atlantic (0.14–21.1 nmol m⁻² d⁻¹; Painter et al., 2014), South Atlantic (1–27 nmol m⁻² d⁻¹; Rigby et al., 2020), and the Southern Ocean (3–31 nmol m⁻² d⁻¹, Blain et al., 2007; 2.3–14 nmol m⁻² d⁻¹, Charette et al., 2007), and of Zn in the Atlantic (2.7–137 nmol m⁻² d⁻¹, Rigby et al., 2020; Achterberg et al., 2020). However, the vertical diffusive Fe fluxes are smaller than some other vertical fluxes estimated in the Southern Ocean (27–135 nmol m⁻² d⁻¹; Dulai et al., 2009) and the winter mixing fluxes in the high-latitude North Atlantic (e.g. 27.3–103 nmol m⁻² d⁻¹; Achterberg et al., 2018). It is also worth mentioning that the TE fluxes estimated by Blain et al. (2007), Bown et al. (2011), and Painter et al. (2014) use the K_z values derived from the vertical density profiles instead of ^{228}Ra .

4.4 Mass-balance budgets for trace elements in the South Atlantic

The mass-balance budgets of dissolved TEs from different sources (horizontal shelf inputs, vertical upward mixing, and atmospheric dust deposition) and sinks (exported fluxes) in the surface South Atlantic (40° S transect) are calculated and summarised in Table 4 and Fig. 8. The vertical upward mixing appears to be a more important source supplying TEs to the surface water at 40° S compared to atmospheric dust

and continental shelf inputs. However, the dominant source or seasonal variation of the vertical TE inputs cannot be identified in this study. Apart from the internal regeneration, TEs from a subsurface lateral input from the continental margin can subsequently be brought to the surface by vertical mixing (e.g. Rijkenberg et al., 2014). Deep winter convective mixing has also been shown as an important source of TEs to the surface ocean (e.g. Achterberg et al., 2018, 2020; Rigby et al., 2020).

A bulk estimate of the dissolved TE exported fluxes from the surface ocean, supported by new production biological uptake, can be made using a sinking particulate organic carbon (POC) flux and an estimated TE/C uptake ratio. In this study region, previous studies have reported the ^{234}Th -derived POC fluxes ranging from 3.1 to 9.7 mmol C m⁻² d⁻¹ in the top 100 m integration depth (7.0 ± 2.2 mmol C m⁻² d⁻¹; Thomalla et al., 2006; 6.4 ± 3.3 mmol C m⁻² d⁻¹; Owens et al., 2015). The estimates of cellular TE/C ratios are 0.3–3, 10–100, and 5–10 $\mu\text{mol mol}^{-1}$ for Co/C, Fe/C, and Zn/C, respectively, based on the measurements in marine phytoplankton under different TE concentrations in surface waters (e.g. Co: 10^{-12} to 10^{-11} mol L⁻¹, Sunda and Huntsman, 1995; Fe: 10^{-8} to 10^{-7} mol L⁻¹, Sunda and Huntsman, 1997; Zn: 10^{-11} to 10^{-10} mol L⁻¹, Sunda and Huntsman, 2000). These concentrations were chosen to represent the ranges of TE concentrations found in the surface waters of this region. Multiplying the POC fluxes with the TE/C ratios, the exported fluxes of Co, Fe, and Zn are 1–29, 31–970, and 16–97 nmol m⁻² d⁻¹, respectively. The results agree with the estimates of particulate TE removal fluxes in the North Atlantic (e.g. Co: 0.27–6.8 and Fe: 274–2740 nmol m⁻² d⁻¹; Hayes et al., 2018), even though the North Atlantic assessments have accounted for both biological uptake and particle scavenging fluxes by directly using TE/ ^{234}Th ratios.

In general, the exported TE fluxes are higher than the net dissolved TE inputs that we have identified in this study (Table 4). Taking Fe as an example, the total dissolved Fe inputs ($22\text{--}45 \times 10^6$ mol yr⁻¹) only contribute 1%–56% of the biological consumption of dissolved Fe, which is not enough to balance the iron budget in the surface ocean. This could imply that (1) the spatial and temporal variability in ^{234}Th -derived POC flux is crucial (given the mean life of ^{234}Th is 35 d); (2) much lower TE/C ratios are required; or (3) other sources of TEs need to be considered (e.g. lateral-transport particulate TE or winter deep mixing).

In the calculations of TE removal fluxes, we have considered a reasonable range of ^{234}Th -derived POC fluxes and the TE/C ratios, which helps to bring the lower end of the TE removal fluxes closer to the upper end of the total TE input fluxes. This may be enough to explain the offsets of Zn and Co budgets, considering the uncertainties, but it is still not enough to explain the offset of Fe. The range of observed phytoplankton TE/C ratios in the global oceans can vary widely (e.g. Co/C: 0.00047–25.6 $\mu\text{mol mol}^{-1}$; Fe/C: 2.1–

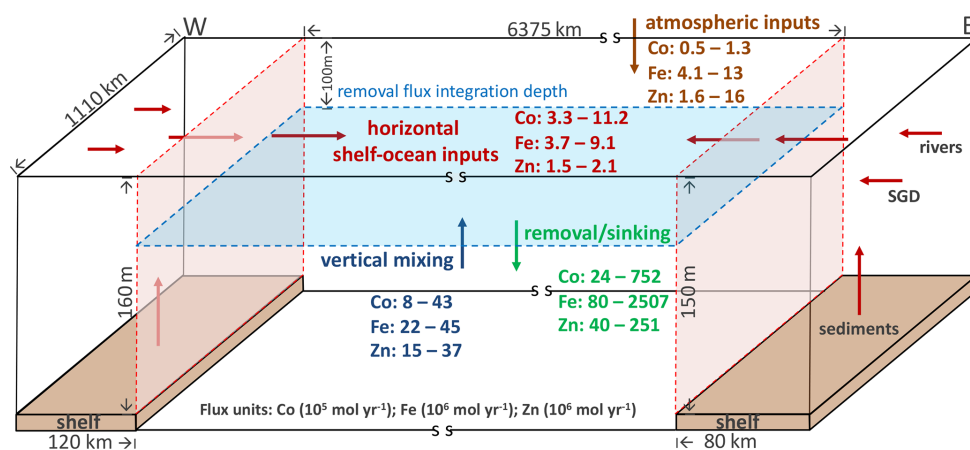


Figure 8. Schematic diagram of dissolved trace element inputs and outputs in the high-productivity zone in the open ocean along the surface 40° S Atlantic transect. The approximate dimensions of the high-productivity zone and continental shelves are labelled, assuming that the zone spans across the latitude from 35 to 45° S (~ 1110 km) and the longitude from 55° W to 20° E (~ 6375 km) with a removal flux integration depth of 100 m. The arrows indicate different TE inputs and outputs in this region. The TE fluxes from Table 4 are shown and colour coded according to the sources. The vertical red cross sections are used to normalise the shelf–ocean TE and ²²⁸Ra fluxes. The net shelf–ocean TE fluxes represent the total inputs from rivers, SGD, and shelf sediments, and the outputs by particle or biological removal between the shelf–ocean mixing from both sides of the continental margins. The blue surface area is used to estimate the net TE inputs from dust and vertical mixing, and the red cross section above the mixed layer is used to estimate the net shelf–ocean TE fluxes (Table 4).

Table 4. Net dTE fluxes in the 40° S Atlantic open-ocean high-productivity zone*.

dTE flux	dCo (10 ⁵ mol yr ⁻¹)	dFe (10 ⁶ mol yr ⁻¹)	dZn (10 ⁶ mol yr ⁻¹)
(1) Shelf–ocean inputs			
Argentine Basin	1.6–8.7	3.2–7.8	1.1–2.6
Cape Basin	1.7–2.5	0.5–1.3	0.4–0.5
Argentine and Cape basins	3.3–11.2	3.7–9.1	1.5–2.1
(2) Vertical mixing	4–30	15–23	12–19
(3) Atmospheric inputs	0.5–1.3	4.1–13	1.6–16
Total dTE fluxes (1–3)	8–43	22–45	15–37
(4) Removal dTE fluxes	24–752	80–2507	40–251

* The high-productivity zone is illustrated in Fig. 8. The net dTE fluxes of (1) shelf–ocean inputs (Table 2) are multiplied by the area of cross-shelf section above the removal flux integration depth (100 m). The net TE fluxes of (2) vertical mixing (Table 3), (3) atmospheric inputs (Chance et al., 2015), and (4) the exported fluxes (assessed from the ²³⁴Th–POC fluxes and TE/C ratios) are multiplied by the surface area.

258 $\mu\text{mol mol}^{-1}$; Zn/C: 0.02–110 $\mu\text{mol mol}^{-1}$; Moore et al., 2013). Direct measurements of the TE/C ratios in the suspended particles in the South Atlantic are required to constrain the removal TE fluxes. The Fe released from lateral-transport particles has been suggested as a potential source to explain the high dissolved Fe concentration observed in the upper 800 m waters in the Southwest Atlantic (Rijkenberg et al., 2014). It is not possible to evaluate this flux or to provide more discussion at this stage. Further studies are needed to understand the sources and the TE concentrations of these particles and the mechanism releasing TEs from these particles in the ocean.

5 Conclusions

This study investigates the distribution of ²²⁸Ra in the 40° S Atlantic transect and provides constraints on ocean mixing and dissolved TE fluxes (Co, Fe, and Zn) to the high-productivity region in the South Atlantic. Although the ²²⁸Ra 1-D mixing model shows some limitations in the assumptions, the ²²⁸Ra data do place bounds on maximum mixing rates in this study and the estimates are within the range of observed values in the global oceans. Three different ²²⁸Ra approaches (1-D diffusion, advection, and ²²⁸Ra/TE ratio) have been applied to estimate the dissolved TE fluxes to the

40° S Atlantic transect, and the results are comparable to each other. The net dissolved TE fluxes suggest that vertical upward mixing is more important than atmospheric dust deposition and continental shelf supply as the main source supplying dissolved TEs to the surface 40° S Atlantic transect. However, considering the biological uptake, these dissolved TE inputs are generally not enough to balance the TE budgets in the surface ocean of this region, particularly for Fe. Apart from vertical upward mixing, continental shelves, and atmospheric dust inputs, other TE inputs (e.g. particulate or winter deep mixing) may need to be considered to improve our understanding of micronutrient limitations in the high-productivity region in the South Atlantic.

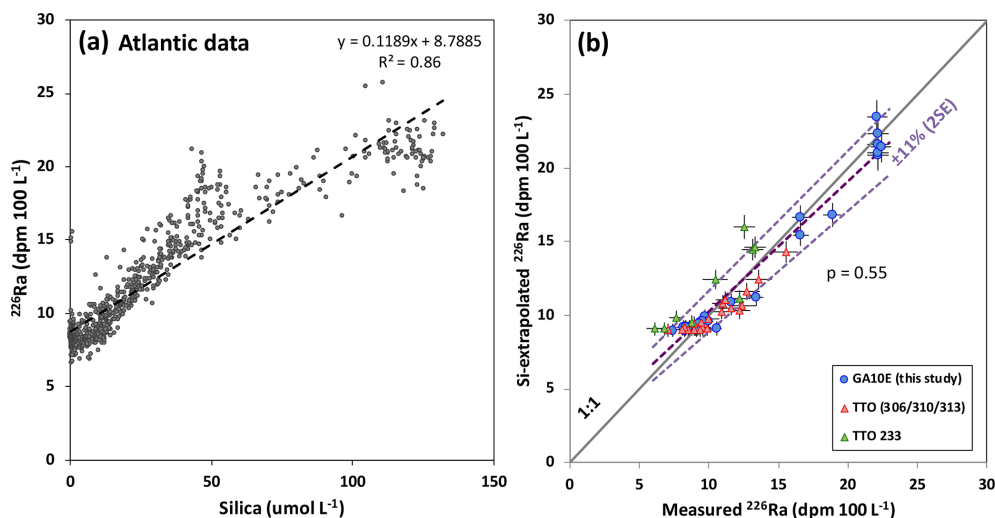
Appendix A: Seawater ^{226}Ra and silica concentrations

Figure A1. (a) Relationship between the Atlantic seawater ^{226}Ra activity and silica concentration (GEOTRACES GA03, GEOSECS, and TTO datasets; Ku and Lin, 1976; Key et al., 1990, 1992a, b; Charette et al., 2015). The dashed line shows a linear regression through all the data. (b) Plots of Si-extrapolated ^{226}Ra against measured ^{226}Ra in this study and the TTO programme. The paired t test shows a p value of 0.55 (> 0.05). The solid line is 1 : 1, and the dashed purple lines show the linear regressions with the error bars of $\pm 11\%$ (2 SE).

Appendix B: TE data

Table B1. Surface water ($< 10\text{ m}$) dissolved trace element data.

Cruise	Stn	Long	Lat	dCo (pM)	dFe (nM)	dZn (nM)
D357	Stn0.5	17.606	-34.336		0.03	
D357	Stn0.5_r	17.586	-34.307	30.7	0.15	
D357	Stn1	17.054	-34.620	42.2		
D357	Stn1_r	17.010	-34.617	33.4		
D357	Stn1.5	16.060	-34.918	10.8		
D357	Stn2.5	14.074	-35.941	7.3		
D357	Stn3	13.270	-36.466	17.4	0.06	
D357	Stn3.5	11.582	-37.457	16.1		
D357	Stn4	10.052	-38.416	16.5		
D357	Stn4.5	7.729	-39.255	4.7	0.06	
D357	Stn4.5	7.729	-39.255		0.02	
D357	FISH_1B	16.967	-34.629	21.0		
D357	FISH_2B	16.084	-34.823	16.2		
D357	FISH_3A	15.091	-35.442	21.9		
D357	FISH_3B	13.256	-36.435	8.5		
D357	FISH_3_Co	13.129	-36.499	17.0		
D357	FISH_4B	7.688	-39.302	6.5		
D357	FISH_4_Co	10.084	-38.350	17.3		

Table B1. Continued.

Cruise	Stn	Long	Lat	dCo (pM)	dFe (nM)	dZn (nM)
D357	FISH_10B	17.599	-34.340	19.7		
D357	FISH_12_Co	11.717	-37.366	8.4		
JC068	FISH_1001	18.128	-34.044	27.7	0.30	0.14
JC068	FISH_1002	17.921	-34.154	29.3	0.30	0.09
JC068	FISH_1003	17.726	-34.237	46.9	0.35	0.07
JC068	FISH_1004	17.452	-34.392	27.3	0.13	0.06
JC068	Stn1	17.054	-34.612	24.6	0.18	0.09
JC068	FISH_1005	17.057	-34.611	26.6	0.13	0.05
JC068	FISH_1006	16.667	-34.774	16.0	0.12	0.16
JC068	FISH_1007	16.274	-34.937	17.8	0.12	0.07
JC068	FISH_1008	15.889	-35.097	15.2	0.09	0.00
JC068	FISH_1009	15.398	-35.312	19.5	0.10	0.01
JC068	FISH_1010	14.996	-35.468	15.7	0.11	0.00
JC068	FISH_1011	14.585	-35.659	16.3	0.11	0.00
JC068	FISH_1012	14.190	-35.836	11.5	0.14	
JC068	FISH_1013	13.825	-35.990	17.5	0.11	0.04
JC068	FISH_1015	13.188	-36.302	18.9	0.12	0.01
JC068	Stn3	13.104	-36.348	29.7	0.18	
JC068	FISH_1016	12.335	-36.935	22.8	0.14	
JC068	FISH_1017	11.733	-37.395	14.6	0.13	0.10
JC068	FISH_1018	11.086	-37.890	15.2	0.16	0.01
JC068	FISH_1019	10.443	-38.368	8.1	0.16	0.03
JC068	FISH_1020	9.778	-38.603	6.0	0.13	0.04
JC068	FISH_1021	8.606	-38.992	8.3	0.15	0.04
JC068	FISH_1022	8.378	-39.069	5.1	0.20	
JC068	FISH_1023	7.705	-39.289	7.4	0.10	0.00
JC068	FISH_1024	7.116	-39.485	5.2	0.10	0.04
JC068	FISH_1114	-54.017	-35.988	83.9		
JC068	Stn24	-54.000	-36.000	65.5	1.53	0.58
JC068	FISH_1110	-53.335	-36.335	146.2	1.35	0.59
JC068	FISH_1109	-53.166	-36.522	71.4	0.50	0.25
JC068	Stn22	-53.102	-36.536	36.7	1.05	0.17
JC068	FISH_1108	-53.007	-36.595	111.4	0.44	0.16
JC068	FISH_1107	-52.850	-36.720	59.8	0.42	0.31
JC068	FISH_1106	-52.721	-36.831	47.6	0.54	0.14
JC068	FISH_1105	-52.598	-36.943	10.5	0.39	0.19
JC068	Stn21	-52.497	-37.019	43.2	0.22	0.03
JC068	Stn21	-52.427	-37.049	59.7	0.31	0.11
JC068	FISH_1103	-52.103	-37.265	70.9	0.37	0.09
JC068	FISH_1102	-51.405	-37.769	51.8	0.33	0.26
JC068	Stn20	-50.992	-38.042	19.9	0.30	0.05
JC068	FISH_1101	-51.114	-38.145	16.5	0.22	0.22
JC068	FISH_1100	-50.632	-38.208	18.4	0.20	0.29
JC068	FISH_1099	-49.954	-38.588	10.1	0.21	0.15
JC068	FISH_1098	-49.286	-38.965	17.1	0.57	
JC068	FISH_1097	-48.464	-39.422	28.2	0.62	0.24
JC068	FISH_1096	-47.540	-39.923	12.8	0.66	0.26
JC068	Stn19	-47.417	-39.992	21.7	0.21	0.10
JC068	FISH_1095	-44.824	-40.001	14.9	0.50	0.18
JC068	FISH_1094	-43.768	-40.003	12.3	0.23	0.17
JC068	Stn18	-42.417	-40.000	16.3	0.23	0.22
JC068	Stn18	-42.297	-40.000	9.2	0.23	0.25

Table B2. Upper ocean (< 600 m) dTE data.

Cruise	Stn	Lat	Long	Depth (m)	dCo (pM)	dFe (nM)	dZn (nM)
D357	Stn1	17.054	-34.620	5	41.5		
D357	Stn1	17.054	-34.620	20	40.0		
D357	Stn1	17.054	-34.620	34	38.2		
D357	Stn1	17.054	-34.620	49	48.8		
D357	Stn1	17.054	-34.620	49	42.6		
D357	Stn1	17.054	-34.620	74	54.6		
D357	Stn1	17.054	-34.620	99	61.2		
D357	Stn1	17.054	-34.620	148	58.8		
D357	Stn1	17.054	-34.620	197	48.5		
D357	Stn1	17.054	-34.620	347	59.3		
D357	Stn1	17.054	-34.620	495	60.8		
D357	Stn1	17.054	-34.620	624	54.4		
D357	Stn3	13.117	-36.333	5		0.07	
D357	Stn3	13.117	-36.333	10	17.7		
D357	Stn3	13.117	-36.333	23		0.06	
D357	Stn3	13.117	-36.333	29	17.0		
D357	Stn3	13.117	-36.333	47		0.05	
D357	Stn3	13.117	-36.333	50	17.5		
D357	Stn3	13.117	-36.333	50		0.06	
D357	Stn3	13.117	-36.333	69	28.0		
D357	Stn3	13.117	-36.333	97		0.09	
D357	Stn3	13.117	-36.333	99	34.1		
D357	Stn3	13.117	-36.333	119	17.2		
D357	Stn3	13.117	-36.333	196		0.14	
D357	Stn3	13.117	-36.333	197	42.7		
D357	Stn3	13.117	-36.333	218	37.1		
D357	Stn3	13.117	-36.333	395		0.30	
D357	Stn3	13.117	-36.333	496	53.8		
D357	Stn3	13.117	-36.333	594		0.44	
D357	Stn4.5	7.800	-39.217	10		0.07	
D357	Stn4.5	7.800	-39.217	20	1.7		
D357	Stn4.5	7.800	-39.217	23		0.06	
D357	Stn4.5	7.800	-39.217	47		0.05	
D357	Stn4.5	7.800	-39.217	50	7.7		
D357	Stn4.5	7.800	-39.217	74	3.5		
D357	Stn4.5	7.800	-39.217	97		0.07	
D357	Stn4.5	7.800	-39.217	99	8.7	0.06	
D357	Stn4.5	7.800	-39.217	124	8.4		
D357	Stn4.5	7.800	-39.217	149	14.1		
D357	Stn4.5	7.800	-39.217	173	16.1		
D357	Stn4.5	7.800	-39.217	197		0.12	
D357	Stn4.5	7.800	-39.217	198	30.1		
D357	Stn4.5	7.800	-39.217	302	28.8		
D357	Stn4.5	7.800	-39.217	400		0.25	
D357	Stn4.5	7.800	-39.217	500	36.9		
JC068	Stn1	17.054	-34.612	18	26.9	0.22	0.21
JC068	Stn1	17.054	-34.612	29	17.5	0.14	0.13
JC068	Stn1	17.054	-34.612	41	22.3	0.28	0.01
JC068	Stn1	17.054	-34.612	48	31.9	0.08	0.01
JC068	Stn1	17.054	-34.612	58	34.9	0.16	0.02
JC068	Stn1	17.054	-34.612	78	32.6	0.29	0.39
JC068	Stn1	17.054	-34.612	98	43.9	0.37	0.34
JC068	Stn1	17.054	-34.612	197	45.4	0.35	0.34
JC068	Stn1	17.054	-34.612	247	44.8	0.45	0.25
JC068	Stn1	17.054	-34.612	296	50.8	0.48	0.28
JC068	Stn1	17.054	-34.612	398	45.2	0.54	0.49

Table B2. Continued.

Cruise	Stn	Lat	Long	Depth (m)	dCo (pM)	dFe (nM)	dZn (nM)
JC068	Stn3	13.104	-36.348	19	24.9	0.13	0.21
JC068	Stn3	13.104	-36.348	34	36.4	0.17	0.27
JC068	Stn3	13.104	-36.348	48	27.8	0.25	0.10
JC068	Stn3	13.104	-36.348	74	30.7	0.14	0.21
JC068	Stn3	13.104	-36.348	98	36.6	0.17	0.08
JC068	Stn3	13.104	-36.348	149	31.1		0.13
JC068	Stn3	13.104	-36.348	199	34.5	0.29	0.06
JC068	Stn3	13.104	-36.348	298	34.2	0.33	0.20
JC068	Stn3	13.104	-36.348	398	38.1	0.41	0.53
JC068	Stn3	13.104	-36.348	498	36.1	0.46	0.35

Appendix C: Relationship between seawater $^{228}\text{Ra}_{\text{ex}}$ and salinity in the Argentine Basin

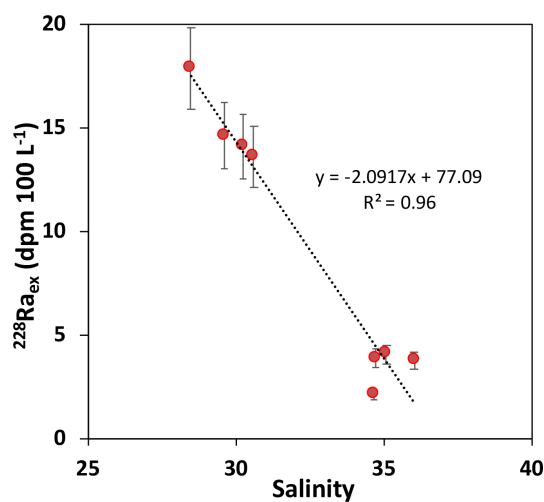


Figure C1. Relationship between seawater $^{228}\text{Ra}_{\text{ex}}$ activity and salinity in the Argentine Basin. The dashed line shows the linear regression. The error bars of $^{228}\text{Ra}_{\text{ex}}$ activity are 2 SE.

Appendix D: TE flux calculations

D1 ^{228}Ra -derived diffusive TE fluxes

To calculate both lateral and vertical TE fluxes, the ^{228}Ra -derived diffusion coefficients (K_z or K_x) are applied to Eq. (6) with the gradient of TE concentration ($\Delta\text{TE}/\Delta x$ or Δz) over either the horizontal distance x to the coasts or the vertical depth z below the mixed layer, which can be obtained from the linear regression of horizontal and vertical TE profiles in Figs. 3 and 4, respectively. In the Argentine Basin, the cross-shelf horizontal gradients of TEs (Fig. 3a, c, and e) and ^{228}Ra -derived K_x (Fig. 5a) have been used to assess the TE fluxes cross the shelf break and the Brazil Current. In the Cape Basin, where the TE gradients (Co and Fe) from both cruises (D357 and JC068) are used for comparison (Fig. 3b and d), the differences are generally less than 20 % (except for the vertical gradient of Co at Stn3). As the vertical gradients and ^{228}Ra -derived K_z in the Argentine Basin are likely to be biased by lateral inputs, the vertical TE fluxes are not assessed in the western transect here. The ^{228}Ra -derived diffusive TE fluxes are summarised in Table 2 (horizontal) and Table 3 (vertical).

D2 ^{228}Ra -derived advective TE fluxes

The advective TE fluxes after the boundary of the shelf break and the Brazil Current in the Argentine Basin can be calculated using Eq. (7) with the net offshore advection velocity ($w = 0.6 \pm 0.3 \text{ cm s}^{-1}$) along the SAC in the Argentine Basin and the average concentrations of dissolved TEs in the initial advective waters around where the Brazil Current merges into the SAC (around Stn21; Fig. 3): $[\text{Co}]_{\text{ave}-0} = 40 \pm 21 \text{ pM}$; $[\text{Fe}]_{\text{ave}-0} = 0.36 \pm 0.13 \text{ nM}$; $[\text{Zn}]_{\text{ave}-0} = 0.12 \pm 0.07 \text{ nM}$ (1 SD, $n = 4$). The calculated advective TE fluxes are summarised in Table 2 for comparison. As the advective signals cannot be easily separated from the mixing in the Cape Basin, the advective TE fluxes are not assessed in the eastern transect here.

D3 TE/ ^{228}Ra -ratio-derived TE fluxes

The cross-shelf TE/ ^{228}Ra -ratio-derived TE fluxes can be calculated using Eq. (8) with the $\Delta\text{TE}/\Delta^{228}\text{Ra}$ ratios reported in Table D1 and the estimates of shelf ^{228}Ra flux ($F_{228\text{Ra}}$) based on the inverse models using the global seawater ^{228}Ra database and inventory (Kwon et al., 2014; Le Gland et al., 2017). In the South Atlantic, the average shelf ^{228}Ra flux is $1.7 \pm 0.3 \times 10^{10} \text{ atoms m}^2 \text{ yr}^{-1}$ around the Uruguayan and South African continental margins (normalised to shelf area; Charette et al., 2016). For comparison, the flux is converted to the shelf–ocean cross-sectional flux by multiplying the average continental shelf widths (Cape Basin: 80 km; Argentine Basin: 120 km) and then dividing by the water depths at the shelf break (Cape Basin: 150 m; Argentine Basin: 160 m) (Urien and Ewing, 1974; Nelson et al., 1998; Carr and Botha, 2012). The shelf length is shared between the two surfaces (the shelf horizontal plane and vertical section in Fig. 8) and cancelled out during the calculation (Table D2). The cross-shelf ^{228}Ra flux ($F_{228\text{Ra}}$) becomes $1.3 \pm 0.2 \times 10^{13} \text{ atoms m}^2 \text{ yr}^{-1}$ in the Argentine Basin and $0.9 \pm 0.2 \times 10^{13} \text{ atoms m}^2 \text{ yr}^{-1}$ in the Cape Basin. The calculated TE fluxes are summarised in Table 2.

It is important to remember that when considering the sources of ^{228}Ra and TEs in the ocean, TEs may have their maximum source term at a different depth than ^{228}Ra . Whereas ^{228}Ra has a clear maximum from the continental shelf in the surface mixed layer, redox-sensitive, more particle-bound or hydrothermal-related TEs may see a maximum at deeper levels, due to particle resuspension, low oxygen saturation, or hydrothermal activity. In this sense, our model calculations provide the estimates of lateral TE inputs in the surface mixed layer with a clear source from the continental shelf. The vertical TE inputs, however, do not separate the TE inputs between internal cycling, hydrothermal, or lateral transport from the continental margin at greater depths. Nevertheless, all these inputs would only become relevant for productivity if they reach the surface mixed layer later, e.g. by vertical mixing as quantified here.

Table D1. Shelf and open-ocean average dTE and ^{228}Ra concentrations and $\Delta\text{TE}/\Delta^{228}\text{Ra}$ ratios*.

		^{228}Ra (10^5 atoms L^{-1})	dCo (pmol L^{-1})	dFe (nmol L^{-1})	dZn (nmol L^{-1})
Argentine Basin	Shelf	6.4 ± 1.1	99 ± 42	1.44 ± 0.12	0.58 ± 0.01
	Open ocean	1.3 ± 0.5	15 ± 5	0.28 ± 0.12	0.18 ± 0.05
Cape Basin	Shelf	1.3 ± 0.1	30 ± 8	0.22 ± 0.09	0.08 ± 0.03
	Open ocean	0.5 ± 0.1	9 ± 5	0.11 ± 0.06	0.05 ± 0.05
$\Delta\text{TE}/\Delta^{228}\text{Ra}$ (10^{-7} nmol atom $^{-1}$)					
Argentine Basin margin			1.6 ± 1.1	22 ± 14	7.7 ± 3.9
Cape Basin margin			2.5 ± 1.5	12 ± 8	3.6 ± 4.2

* Only JC068 TE data are used. All errors are ± 1 SD.

Table D2. Average shelf width and shelf-break water depth for shelf–ocean dTE flux normalisation^a.

Location	Shelf width (km)	Water depth (m)	References
South African margin (Cape Basin)	80	150	Nelson et al. (1998), Carr and Botha (2012)
Uruguayan margin (Argentine Basin)	120	160	Urien and Ewing (1974)
Western North Atlantic margin	135	132	Emery (1966)
Peruvian margin	100	200	Hooker et al. (2013)
	Cross section width (km)	Mixed layer depth (m)	
Congo River margin ^b	300	15	Vieira et al. (2020)
Brazilian margin ^c	240	10	Windom et al. (2006)

^a Shelf–ocean TE or ^{228}Ra fluxes presented in this study are normalised to the area of shelf–ocean cross section (by default, the cross section at shelf break is equal to shelf length multiplied by the shelf-break water depth). To convert the shelf TE or ^{228}Ra flux (usually normalised by shelf area) from previous studies, the shelf fluxes are multiplied by the shelf width and length, and then divided by the area of the cross section. Shelf length should drop off from the flux conversion. ^a Congo River margin TE fluxes are divided by a defined cross section (the width of river plume multiplied by the mixed layer depth). ^b Brazilian margin Fe flux is divided by a defined cross section (the width of a defined coastline multiplied by the mixed layer depth).

Data availability. All the original and supporting data are shown in the paper. The data are also available publicly at the GEOTRACES IDP2017 (<https://www.bodc.ac.uk/geotraces/data/idp2017/>, Schlitzer et al., 2018).

Author contributions. YTH, WG, and GMH designed the radium projects. YTH conducted the Ra-228 and Ra-226 analyses. EMSW conducted the Si measurements. NJW, MCL, and EPA contributed the TE data and interpretation. YTH prepared the manuscript with contributions from all co-authors.

Competing interests. The authors declare that they have no conflict of interest.

Acknowledgements. The authors wish to thank the officers and crew of the RRS *Discovery* and RRS *James Cook* for their assistance on the UK GEOTRACES GA10 cruises (D357 and JC068). We would like to thank Alex Thomas, Andrew Mason, and Steve Wyatt for assistance with mass spectrometry and laboratory support. We would also like to thank Willard Moore, Will Homoky, Yves Plancherel, and Christian Schlosser for feedback and discussion at different stages of the manuscript preparation. This study was funded by grants from the UK Natural Environment Research Council for the UK GEOTRACES GA10 cruises NE/H008497/1 to Walter Geibert, NE/F017316/1 to Gideon M. Henderson, NE/H004475/1 to Maeve C. Lohan and Neil J. Wyatt, and NE/H004394/1 to Eric P. Achterberg.

Financial support. This research has been supported by the Natural Environment Research Council (grant nos. NE/H008497/1 to Walter Geibert, NE/F017316/1 to Gideon M. Henderson, NE/H004475/1 to Maeve C. Lohan and Neil J. Wyatt, and NE/H004394/1 to Eric P. Achterberg).

Review statement. This paper was edited by Markus Kienast and reviewed by two anonymous referees.

References

Achterberg, E. P., Steigenberger, S., Marsay, C. M., LeMoigne, F. A. C., Painter, S. C., Baker, A. R., Connelly, D. P., Moore, C. M., Tagliabue, A., and Tanhua, T.: Iron biogeochemistry in the high latitude North Atlantic Ocean, *Sci. Rep.*, 8, 1283, <https://doi.org/10.1038/s41598-018-19472-1>, 2018.

Achterberg, E. P., Steigenberger, S., Klar, J. K., Browning, T. J., Marsay, C. M., Painter, S. C., Vieira, L., Baker, A. R., Hamilton, D. S., Tanhua, T., and Moore, C. M.: Trace element biogeochemistry in the high latitude North Atlantic Ocean; seasonal variations and volcanic inputs, *Global Biogeochem. Cy.*, e2020GB006674, <https://doi.org/10.1029/2020GB006674>, online first, 2020.

Beal, L. M., De Ruijter, W. P. M., Biastoch, A., Zahn, R., and the SCOR/WCRP/IAPSO Working Group 136: On the role of the Agulhas system in ocean circulation and climate, *Nature*, 472, 429–436, <https://doi.org/10.1038/nature09983>, 2011.

Blain, S., Quéguiner, B., Armand, L., Belviso, S., Bombled, B., Bopp, L., Bowie, A., Brunet, C., Brussaard, C., Carlotti, F., Christaki, U., Corbière, A., Durand, I., Ebersbach, F., Fuda, J.-L., Garcia, N., Gerringa, L., Griffiths, B., Guigue, C., Guillerm, C., Jacquet, S., Jeandel, C., Laan, P., Lefèvre, D., Monaco, C. L., Malits, A., Mosseri, J., Obernosterer, I., Park, Y.-H., Picheral, M., Pondaven, P., Remenyi, T., Sandroni, V., Sarthou, G., Savoye, N., Scouarnec, L., Souhaut, M., Thuiller, D., Timmermans, K., Trull, T., Uitz, J., van Beek, P., Veldhuis, M., Vincent, D., Viollier, E., Vong, L., and Wagener T.: Effect of natural iron fertilization on carbon sequestration in the Southern Ocean, *Nature*, 446, 1070–1074, <https://doi.org/10.1038/nature05700>, 2007.

Bown, J., Boye, M., Baker, A., Duvieilbourg, E., Lacan, F., Le Moigne, F., Planchon, F., Speich, S., and Nelson, D. M.: The biogeochemical cycle of dissolved cobalt in the Atlantic and the Southern Ocean south off the coast of South Africa, *Mar. Chem.*, 126, 193–206, <https://doi.org/10.1016/j.marchem.2011.03.008>, 2011.

Broecker, W. S., Goddard, J., and Sarmiento, J. L.: Distribution of Ra-226 in Atlantic Ocean, *Earth Planet. Sci. Lett.*, 32, 220–235, [https://doi.org/10.1016/0012-821X\(76\)90063-7](https://doi.org/10.1016/0012-821X(76)90063-7), 1976.

Browning, T. J., Bouman, H. A., Moore, C. M., Schlosser, C., Tarran, G. A., Woodward, E. M. S., and Henderson, G. M.: Nutrient regimes control phytoplankton ecophysiology in the South Atlantic, *Biogeosciences*, 11, 463–479, <https://doi.org/10.5194/bg-11-463-2014>, 2014.

Browning, T. J., Achterberg, E. P., Yong, J. C., Rapp, I., Utermann, C., and Moore, C. M.: Iron limitation of microbial phosphorus acquisition in the tropical North Atlantic, *Nat. Commun.*, 8, 15465, <https://doi.org/10.1038/ncomms15465>, 2017.

Bruland, K. W. and Franks, R. P.: Mn, Ni, Cu, Zn and Cd in the Western North Atlantic, in: *Trace Metals in Sea Water*, edited by: Wong, C. S., Boyle, E., Bruland, K. W., Burton, J. D., and Goldberg, E. D., Springer, Boston, MA, USA, 395–414, https://doi.org/10.1007/978-1-4757-6864-0_23, 1983.

Cai, P., Huang, Y., Chen, M., Guo, L., Liu, G., and Qiu, Y.: New production based on Ra-228-derived nutrient budgets and thorium-estimated POC export at the intercalibration station in the South China Sea, *Deep-Sea Res.*, 49, 53–66, [https://doi.org/10.1016/S0967-0637\(01\)00040-1](https://doi.org/10.1016/S0967-0637(01)00040-1), 2002.

Carr, A. S. and Botha, G. A.: Coastal Geomorphology, in: *Southern African Geomorphology: Recent Trends and New Directions*, edited by: Holmes, P. and Meadows, M. E., Sun Press, Bloemfontein, South Africa, 269–303, 2012.

Chance, R., Jickells, T. D., and Baker, A. R.: Atmospheric trace metal concentrations, solubility and deposition fluxes in remote marine air over the south-east Atlantic, *Mar. Chem.*, 177, 45–56, <https://doi.org/10.1016/j.marchem.2015.06.028>, 2015.

Charette, M. A., Gonnee, M. E., Morris, P. J., Statham, P., Fones, G., Planquette, H., Salter, I., and Garabato, A. N.: Radium isotopes as tracers of iron sources fueling a Southern Ocean phytoplankton bloom, *Deep-Sea Res.*, 54, 1989–1998, <https://doi.org/10.1016/j.dsr2.2007.06.003>, 2007.

Charette, M. A., Morris, P. J., Henderson, P. B., and Moore, W. S.: Radium isotope distributions during the US GEO-

- TRACES North Atlantic cruises, *Mar. Chem.*, 177, 184–195, <https://doi.org/10.1016/j.marchem.2015.01.001>, 2015.
- Charette, M. A., Lam, P. J., Lohan, M. C., Kwon, E. Y., Hatje, V., Jendel, C., Shiller, A. M., Cutter, G. A., Thomas, A., Boyd, P. W., Homoky, W. B., Milne, A., Thomas, H., Andersson, P. S., Porcelli, D., Tanaka, T., Geibert, W., Dehairs, F., and Garcia-Orellana, J.: Coastal ocean and shelf-sea biogeochemical cycling of trace elements and isotopes: lessons learned from GEOTRACES, *Philos. T. R. Soc. A*, 374, 20160076, <https://doi.org/10.1098/rsta.2016.0076>, 2016.
- Chever, F., Bucciarelli, E., Sarthou, G., Speich, S., Arhan, M., Penven, P., and Tagliabue, A.: Physical speciation of iron in the Atlantic sector of the Southern Ocean along a transect from the subtropical domain to the Weddell Sea Gyre, *J. Geophys. Res.-Oceans*, 115, C10059, <https://doi.org/10.1029/2009JC005880>, 2010.
- Clough, R., Floor, G. H., Quénel, C. R., Milne, A., Lohan, M. C., and Worsfold, P. J.: Measurement uncertainty associated with ship-board sample collection and filtration for the determination of the concentration of iron in seawater, *Anal. Methods*, 8, 6711–6719, <https://doi.org/10.1039/C6AY01551D>, 2016.
- Cochran, J. K.: The oceanic chemistry of the uranium- and thorium-series nuclides, in: *Uranium-Series Disequilibrium: Applications to Earth, Marine, and Environmental Sciences*, edited by: Ivanovich, M. and Harmon R. S., Clarendon Press, Oxford, UK, 334–391, 1992.
- Cutter, G., Andersson, P., Codispoti, L., Croot, P., Francois, R., Lohan, M. C., Obata, H., and Rutgers van der Loeff, M.: Sampling and sample-handling protocols for GEOTRACES cruises, available at: <http://www.geotraces.org/libraries/documents/Intercalibration/Cookbook.pdf> (last access: 10 January 2021), 2010.
- Dulaiova, H., Ardelan, M. V., Henderson, P. B., and Charette, M. A.: Shelf-derived iron inputs drive biological productivity in the southern Drake Passage, *Global Biogeochem. Cy.*, 23, GB4014, <https://doi.org/10.1029/2008GB003406>, 2009.
- Emery, K. O.: Atlantic continental shelf and slope of the United States: U.S. Geological Survey Professional Papers, 529, 1–23, 1966.
- Foster, D. A., Staubwasser, M., and Henderson, G. M.: Ra-226 and Ba concentrations in the Ross Sea measured with multicollector ICP mass spectrometry, *Mar. Chem.*, 87, 59–71, <https://doi.org/10.1016/j.marchem.2004.02.003>, 2004.
- Gaiero, D. M., Simonella, L., Gassó, S., Gili, S., Stein, A. F., Sosa, P., Becchio, R., Arce, J., and Marelli, H.: Ground/satellite observations and atmospheric modeling of dust storms originating in the high Puna- Altiplano deserts (South America), implications for the interpretation of paleoclimatic archives, *J. Geophys. Res.-Atmos.*, 118, 3817–3831, <https://doi.org/10.1002/jgrd.50036>, 2013.
- Geibert, W., Rodellas, V., Annett, A., van Beek, P., Garcia-Orellana, J., Hsieh, Y.-T., and Masque, P.: ^{226}Ra determination via the rate of ^{222}Rn ingrowth with the Radium Delayed Coincidence Counter (RaDeCC), *Limnol. Oceanogr.-Meth.*, 11, 594–603, <https://doi.org/10.4319/lom.2013.11.594>, 2013.
- Graham, R. M., De Boer, A. M., van Sebille, E., Kohfeld, K. E., and Schlosser, C.: Inferring source regions and supply mechanisms of iron in the Southern Ocean from satellite chlorophyll data, *Deep Sea Res.*, 104, 9–25, <https://doi.org/10.1016/j.dsr.2015.05.007>, 2015.
- Hanfland, C.: Radium-226 and Radium-228 in the Atlantic sector of the Southern Ocean, PhD thesis, Alfred Wegener Institut für Polar und Meeresforschung, Bremerhaven, Germany, 135 pp., 2002.
- Hawco, N. J., Ohnemus, D. C., Resing, J. A., Twining, B. S., and Saito, M. A.: A dissolved cobalt plume in the oxygen minimum zone of the eastern tropical South Pacific, *Biogeosciences*, 13, 5697–5717, <https://doi.org/10.5194/bg-13-5697-2016>, 2016.
- Hayes, C. T., Black, E. E., Anderson, R. F., Baskaran, M., Buesseler, K. O., Charette, M. A., Cheng, H., Cochran, J. K., Edwards, R. L., Fitzgerald, P., Lam, P. J., Lu, Y., Morris, S. O., Ohnemus, D. C., Pavia, F. J., Stewart, G., and Tang, Y.: Flux of Particulate Elements in the North Atlantic Ocean Constrained by Multiple Radionuclides, *Global Biogeochem. Cy.*, 32, 1738–1758, 2018.
- Homoky, W., John, S. G., Conway, T. M., and Mills, R. A.: Distinct iron isotopic signatures and supply from marine sediment dissolution, *Nat. Commun.*, 4, 2143, <https://doi.org/10.1038/ncomms3143>, 2013.
- Hooker, Y., Prieto-Rios, E., and Solís-Marín, F. A.: Echinoderms of Peru, in: *Echinoderm research and diversity in Latin America*, edited by: Alvarado-Barrientos, J. J. and Solís-Marín, F. A., Springer, Berlin, Germany, 277–299, 2013.
- Hsieh, Y.-T. and Henderson, G. M.: Precise measurement of $^{228}\text{Ra}/^{226}\text{Ra}$ ratios and Ra concentrations in seawater samples by multi-collector ICP mass spectrometry, *J. Anal. Atom. Spect.*, 26, 1338–1346, <https://doi.org/10.1039/C1JA10013K>, 2011.
- Jenkins, W. J.: Nitrate Flux into the Euphotic Zone near Bermuda, *Nature*, 331, 521–523, <https://doi.org/10.1038/331521a0>, 1988.
- Kadko, D., Aguilar-Islas, A., Buck, C. S., Fitzsimmons, J. N., Landing, W. M., Shiller, A., Till, C. P., Bruland, K. W., Boyle, E. A., and Anderson, R. F.: Sources, fluxes and residence times of trace elements measured during the U.S. GEOTRACES East Pacific Zonal Transect, *Mar. Chem.*, 222, 103781, <https://doi.org/10.1016/j.marchem.2020.103781>, 2020.
- Kaufman, A., Trier, R., Broecker, W. S., and Feely, H. W.: Distribution of ^{228}Ra in the world ocean, *J. Geophys. Res.*, 78, 8827–8848, <https://doi.org/10.1029/JC078i036p08827>, 1973.
- Key, R. M., Rotter, R. J., McDonald, G. J., and Slater, R. D.: Western Boundary Exchange Experiment Final Data Report for large volume samples ^{228}Ra , ^{226}Ra , ^9Be , and ^{10}Be Results, Technical Report 90-1, Ocean Tracer Laboratory, Department of Geology and Geophysics, Princeton University, Princeton, USA, 298 pp., 1990.
- Key, R. M., Moore, W. S., and Sarmiento, J. L.: Transient Tracers in the Ocean North Atlantic Study Final Data Report for ^{228}Ra and ^{226}Ra , Technical Report 92-2, Ocean Tracer Laboratory, Department of Geology and Geophysics, Princeton University, Princeton, USA, 193 pp., 1992a.
- Key, R. M., Moore, W. S., and Sarmiento, J. L.: Transient Tracers in the Ocean Tropical Atlantic Study Final Data Report for ^{228}Ra and ^{226}Ra , Technical Report 92-3, Ocean Tracer Laboratory, Department of Geology and Geophysics, Princeton University, Princeton, USA, 298 pp., 1992b.
- Kipp, L. E., Charette, M. A., Moore, W. S., Henderson, P. B., and Rigor, I. G.: Increased fluxes of shelf-derived materials to the central Arctic Ocean, *Sci. Adv.*, 4, ea01302, <https://doi.org/10.1126/sciadv.a01302>, 2018a.

- Kipp, L. E., Sanial, V., Henderson, P. B., van Beek, P., Reyss, J.-L., Hammond, D. E., Moore, W. S., and Charette, M. A.: Radium isotopes as tracers of hydrothermal inputs and neutrally buoyant plume dynamics in the deep ocean, *Mar. Chem.*, 201, 51–65, <https://doi.org/10.1016/j.marchem.2017.06.011>, 2018b.
- Knauss, K. G., Ku, T. L., and Moore, W. S.: Radium and Thorium Isotopes in Surface Waters of East Pacific and Coastal Southern-California, *Earth Planet. Sci. Lett.*, 39, 235–249, [https://doi.org/10.1016/0012-821X\(78\)90199-1](https://doi.org/10.1016/0012-821X(78)90199-1), 1978.
- Ku, T. L. and Lin, M. C.: Ra-226 Distribution in Antarctic Ocean, *Earth Planet. Sci. Lett.*, 32, 236–248, [https://doi.org/10.1016/0012-821X\(76\)90064-9](https://doi.org/10.1016/0012-821X(76)90064-9), 1976.
- Ku, T. L. and Luo, S.: Ocean circulation/mixing studies with decay-series isotopes, in: *U-Th Series Nuclides in Aquatic Systems*, edited by: Krishnaswami, S. and Cochran, J. K., Elsevier, Oxford, UK, 307–344, 2008.
- Ku, T. L., Luo, S. D., Kusakabe, M., and Bishop, J. K. B.: Ra-228-Derived Nutrient Budgets in the Upper Equatorial Pacific and the Role of New Silicate in Limiting Productivity, *Deep-Sea Res.*, 42, 479–497, [https://doi.org/10.1016/0967-0645\(95\)00020-Q](https://doi.org/10.1016/0967-0645(95)00020-Q), 1995.
- Kunze, E. and Sanford, T. B.: Abyssal mixing: Where it is not, *J. Phys. Oceanogr.*, 26, 2286–2296, [https://doi.org/10.1175/1520-0485\(1996\)026<2286:AMWIIN>2.0.CO;2](https://doi.org/10.1175/1520-0485(1996)026<2286:AMWIIN>2.0.CO;2), 1996.
- Kwon, E. Y., Kim, G., Primeau, F., Moore, W. S., Cho, H.-M., DeVries, T., Sarmiento, J. L., Charette, M. A., and Cho, Y.-K.: Global estimate of submarine groundwater discharge based on an observationally constrained radium isotope model, *Geophys. Res. Lett.*, 41, 8438–8444, <https://doi.org/10.1002/2014GL061574>, 2014.
- Lamontagne, S. and Webster, I. T.: Theoretical assessment of the effect of vertical dispersivity on coastal seawater radium distribution, *Front. Mar. Sci.*, 6, 357, <https://doi.org/10.3389/fmars.2019.00357>, 2019.
- Ledwell, J. R., Watson, A. J., and Law, C. S.: Evidence for slow mixing across the pycnocline from an open-ocean tracer-release experiment, *Nature*, 364, 701–703, <https://doi.org/10.1038/364701a0>, 1993.
- Le Gland, G., Mémerly, L., Aumont, O., and Resplandy, L.: Improving the inverse modeling of a trace isotope: how precisely can radium-228 fluxes toward the ocean and submarine groundwater discharge be estimated?, *Biogeosciences*, 14, 3171–3189, <https://doi.org/10.5194/bg-14-3171-2017>, 2017.
- Li, Y. H., Peng, T. H., Broecker, W. S., and Ostlund, H. G.: The Average Vertical Mixing Coefficient for the Oceanic Thermocline, *Tellus B*, 36, 212–217, <https://doi.org/10.3402/tellusb.v36i3.14905>, 1984.
- Liang, X., Spall, M., and Wunsch, C.: Global ocean vertical velocity from a dynamically consistent ocean state estimate, *J. Geophys. Res.-Oceans*, 122, 8208–8224, <https://doi.org/10.1002/2017JC012985>, 2017.
- Lohan, M. C. and Tagliabue, A.: Oceanic Micronutrients: trace metals that are essential for marine life, *Elements*, 14, 385–390, <https://doi.org/10.2138/gselements.14.6.385>, 2018.
- Longhurst, A. R.: *Ecological Geography of the Sea*, Academic Press, Burlington, VT, USA, <https://doi.org/10.1016/B978-0-12-455521-1.X5000-1>, 2007.
- Martin, A. P., Lucas, M. I., Painter, S. C., Pidcock, R., Prandke, H., Prandke, H., and Stinchcombe, M. C.: The supply of nutrients due to vertical turbulent mixing: a study at the Porcupine Abyssal Plain study site (49°50' N 16°30' W) in the Northeast Atlantic, *Deep-Sea Res.*, 57, 1293–1302, <https://doi.org/10.1016/j.dsr2.2010.01.006>, 2010.
- Menzel Barraqueta, J.-L., Klar, J. K., Gledhill, M., Schlosser, C., Shelley, R., Planquette, H. F., Wenzel, B., Sarthou, G., and Achterberg, E. P.: Atmospheric deposition fluxes over the Atlantic Ocean: a GEOTRACES case study, *Biogeosciences*, 16, 1525–1542, <https://doi.org/10.5194/bg-16-1525-2019>, 2019.
- Moore, C. M., Mills, M. M., Arrigo, K. R., Berman-Frank, I., Bopp, L., Boyd, P. W., Galbraith, E. D., Geider, R. J., Guieu, C., Jaccard, S. L., Jickells, T. D., La Roche, J., Lenton, T. M., Mahowald, N. M., Earanon, E., Marinov, I., Moore, J. K., Nakatsuka, T., Oschlies, A., Saito, M. A., Thingstad, T. F., Tsuda, A., and Ulloa, O.: Processes and patterns of oceanic nutrient limitation, *Nat. Geosci.*, 6, 701–710, <https://doi.org/10.1038/ngeo1765>, 2013.
- Moore, J. K., Doney, S. C., and Lindsay, K.: Upper ocean ecosystem dynamics and iron cycling in a global three-dimensional model, *Global Biogeochem. Cy.*, 18, GB4028, <https://doi.org/10.1029/2004GB002220>, 2004.
- Moore, W. S.: Determining coastal mixing rates using radium isotopes, *Cont. Shelf Res.*, 20, 1993–2007, [https://doi.org/10.1016/S0278-4343\(00\)00054-6](https://doi.org/10.1016/S0278-4343(00)00054-6), 2000.
- Moore, W. S.: Inappropriate attempts to use distributions of ²²⁸Ra and ²²⁶Ra in coastal waters to model mixing and advection rates, *Cont. Shelf Res.*, 105, 95–100, <https://doi.org/10.1016/j.csr.2015.05.014>, 2015.
- Moore, W. S. and Arnold, R.: Measurement of Ra-223 and Ra-224 in coastal waters using a delayed coincidence counter, *J. Geophys. Res.-Oceans*, 101, 1321–1329, <https://doi.org/10.1029/95JC03139>, 1996.
- Moore, W. S. and Dymond, J.: Fluxes of Ra-226 and Barium in the Pacific-Ocean – the Importance of Boundary Processes, *Earth Planet. Sci. Lett.*, 107, 55–68, [https://doi.org/10.1016/0012-821X\(91\)90043-H](https://doi.org/10.1016/0012-821X(91)90043-H), 1991.
- Moore, W. S., Key, R. M., and Sarmiento, J. L.: Techniques for Precise Mapping of Ra-226 and Ra-228 in the Ocean, *J. Geophys. Res.-Oceans*, 90, 6983–6994, <https://doi.org/10.1029/JC090iC04p06983>, 1985.
- Moore, W. S., Sarmiento, J. L., and Key, R. M.: Submarine groundwater discharge revealed by ²²⁸Ra distribution in the upper Atlantic Ocean, *Nat. Geosci.*, 1, 309–311, <https://doi.org/10.1038/ngeo183>, 2008.
- Morel, F. M. M. and Price, N. M.: The biogeochemical cycles of trace metals in the oceans, *Science*, 300, 944–947, <https://doi.org/10.1126/science.1083545>, 2003.
- Nelson, G., Boyd, A. J., Agenbag, J. J., and Duncombe Rae, C. M.: An upwelling filament north-west of Cape Town, South Africa, *S. Afr. J. Marine Sci.*, 19, 75–88, <https://doi.org/10.2989/025776198784126953>, 1998.
- Noble, A. E., Lamborg, C. H., Ohnemus, D. C., Lam, P. J., Goepfert, T. J., Measures, C. I., Frame, C. H., Casciotti, K. L., DiTullio, G. R., Jennings, J., and Saito, M. A.: Basin-scale inputs of cobalt, iron, and manganese from the Benguela-Angola front to the South Atlantic Ocean, *Limnol. Oceanogr.*, 57, 989–1010, <https://doi.org/10.4319/lo.2012.57.4.0989>, 2012.
- Noble, A. E., Ohnemus, D. C., Hawco, N. J., Lam, P. J., and Saito, M. A.: Coastal sources, sinks and strong organic com-

- plexation of dissolved cobalt within the US North Atlantic GEOTRACES transect GA03, *Biogeosciences*, 14, 2715–2739, <https://doi.org/10.5194/bg-14-2715-2017>, 2017.
- Nozaki, Y. and Yamamoto, Y.: Radium 228 based nitrate fluxes in the eastern Indian Ocean and the South China Sea and a silicon-induced “alkalinity pump” hypothesis, *Global Biogeochem. Cy.*, 15, 555–567, <https://doi.org/10.1029/2000GB001309>, 2001.
- Oschlies, A.: Nutrient supply to the surface waters of the North Atlantic: A model study, *J. Geophys. Res.-Oceans*, 107, 3046, <https://doi.org/10.1029/2000JC000275>, 2002.
- Owens, S. A., Pike, S., and Buesseler, K. O.: Thorium-234 as a tracer of particle dynamics and upper ocean export in the Atlantic Ocean, *Deep Sea Res.*, 116, 42–59, <https://doi.org/10.1016/j.dsr2.2014.11.010>, 2015.
- Painter, S. C., Henson, S. A., Forryan, A., Steigenberger, S., Klar, J., Stinchcombe, M. C., Rogan, N., Baker, A. R., Achterberg, E. P., and Moore, C. M.: An assessment of the vertical diffusive flux of iron and other nutrients to the surface waters of the subpolar North Atlantic Ocean, *Biogeosciences*, 11, 2113–2130, <https://doi.org/10.5194/bg-11-2113-2014>, 2014.
- Paul, M., Van De Flierdt, T., Rehkämper, M., Khondoker, R., Weiss, D., Lohan, M. C., and Homoky, W. B.: Tracing the Agulhas leakage with lead isotopes, *Geophys. Res. Lett.*, 42, 8515–8521, <https://doi.org/10.1002/2015GL065625>, 2015.
- Price, N. M. and Morel, F. M. M.: Cadmium and cobalt substitution for zinc in a marine diatom, *Nature*, 344, 658–660, 1990.
- Reid, D. F., Key, R. M., and Schink, D. R.: Radium, Thorium and Actinium extraction from seawater using an improved manganese-oxide-coated fiber, *Earth Planet. Sci. Lett.*, 43, 223–226, [https://doi.org/10.1016/0012-821X\(79\)90205-X](https://doi.org/10.1016/0012-821X(79)90205-X), 1979.
- Rigby, S. J., Williams, R. G., Achterberg, E. P., and Tagliabue, A.: Resource availability and entrainment are driven by offsets between nutriclines and winter mixed-layer depth, *Global Biogeochem. Cy.*, 34, e2019GB006497, <https://doi.org/10.1029/2019GB006497>, 2020.
- Rijkenberg, M. J. A., Middag, R., Laan, P., Gerringa, L. J. A., van Aken, H. M., Schoemann, V., de Jong, J. T. M., and de Baar, H. J. W.: The distribution of dissolved iron in the west Atlantic Ocean, *PLoS One*, 9, e101323, <https://doi.org/10.1371/journal.pone.0101323>, 2014.
- Rodellas, V., Garcia-Orellana, J., Masqué, P., Feldman, M., and Weinstein, Y.: Submarine groundwater discharge as a major source of nutrients to the Mediterranean Sea, *P. Natl. Acad. Sci.*, 12, 3926–3930, <https://doi.org/10.1073/pnas.1419049112>, 2015.
- Rutgers van der Loeff, M. M., Key, R. M., Scholten, J., Bauch, D., and Michel, A.: ²²⁸Ra as a tracer for shelf water in the arctic ocean, *Deep. Sea Res.*, 42, 1533–1553, [https://doi.org/10.1016/0967-0645\(95\)00053-4](https://doi.org/10.1016/0967-0645(95)00053-4), 1995.
- Saito, M. A., Noble, A. E., Tagliabue, A., Goepfert, T. J., Lamborg, C. H., and Jenkins, W. J.: Slow-spreading submarine ridges in the South Atlantic as a significant oceanic iron source, *Nat. Geosci.*, 6, 775–779, <https://doi.org/10.1038/ngeo1893>, 2013.
- Sanial, V., Kipp, L. E., Henderson, P. B., van Beek, P., Reyss, J.-L., Hammond, D. E., Hawco, N., Saito, M. A., Resing, J. A., Sedwick, P. N., Moore, W. S., and Charette, M. A.: Radium-228 as a tracer of dissolved trace element inputs from the Peruvian continental margin, *Mar. Chem.*, 201, 20–34, <https://doi.org/10.1016/j.marchem.2017.05.008>, 2018.
- Sarmiento, J. L., Feely, H. W., Moore, W. S., Bainbridge, A. E., and Broecker, W. S.: Relationship between Vertical Eddy Diffusion and Buoyancy Gradient in Deep-Sea, *Earth Planet. Sci. Lett.*, 32, 357–370, [https://doi.org/10.1016/0012-821X\(76\)90076-5](https://doi.org/10.1016/0012-821X(76)90076-5), 1976.
- Sarmiento, J. L., Thiele, G., Key, R. M., and Moore, W. S.: Oxygen and Nitrate New Production and Remineralization in the North-Atlantic Subtropical Gyre, *J. Geophys. Res.-Oceans*, 95, 18303–18315, <https://doi.org/10.1029/JC095iC10p18303>, 1990.
- Schlitzer, R.: Mass and Heat Transport in the South Atlantic Derived from Historical Hydrographic Data, edited by: Wefer, G., Berger, W. H., Siedler, G., and Webb, D. J., in: *The South Atlantic*, Springer, Berlin and Heidelberg, Germany, 305–323, https://doi.org/10.1007/978-3-642-80353-6_17, 1996.
- Schlitzer, R.: Quantifying He fluxes from the mantle using multi-tracer data assimilation, *Philos. T. R. Soc. A*, 374, 20150288, <https://doi.org/10.1098/rsta.2015.0288>, 2016.
- Schlitzer, R., Anderson, R. F., Dodas, E. M., Lohan, M., Geibert, W., Tagliabue, A., Bowie, A., Jeandel, C., Maldonado, M. T., Landing, W. M., Cockwell, D., Abadie, C., Abouchami, W., Achterberg, E. P., Agather, A., Aguiar-Islas, A., van Aken, H. M., Andersen, M., Archer, C., Auro, M., de Baar, H. J., Baars, O., Baker, A. R., Bakker, K., Basak, C., Baskaran, M., Bates, N. R., Bauch, D., van Beek, P., Behrens, M. K., Black, E., Bluhm, K., Bopp, L., Bouman, H., Bowman, K., Bown, J., Boyd, P., Boye, M., Boyle, E. A., Branellec, P., Bridgestock, L., Brissebrat, G., Browning, T., Bruland, K. W., Brumsack, H.-J., Brzezinski, M., Buck, C. S., Buck, K. N., Buesseler, K., Bull, A., Butler, E., Cai, P., Cámara Mor, P., Cardinal, D., Carlson, C., Carrasco, G., Casacuberta, N., Casciotti, K. L., Castrillejo, M., Chamizo, E., Chance, R., Charette, M. A., Chaves, J. E., Cheng, H., Chever, F., Christl, M., Church, T. M., Closset, I., Colman, A., Conway, T. M., Cossa, D., Croot, P., Cullen, J. T., Cutter, G. A., Daniels, C., Dehairs, F., Deng, F., Dieu, H. T., Duggan, B., Dulaquais, G., Dumousseaud, C., Echevoyen-Sanz, Y., Edwards, R. L., Ellwood, M., Fahrbach, E., Fitzsimmons, J. N., Flegal, A. R., Fleisher, M. Q., van de Flierdt, T., Frank, M., Friedrich, J., Fripiat, F., Fröllje, H., Galer, S. J. G., Gamo, T., Ganeshram, R. S., Garcia-Orellana, J., Garcia-Solsona, E., Gault-Ringold, M., George, E., Gerringa, L. J. A., Gilbert, M., Godoy, J. M., Goldstein, S. L., Gonzalez, S. R., Grissom, K., Hammerschmidt, C., Hartman, A., Hassler, C. S., Hathorne, E. C., Hatta, M., Hawco, N., Hayes, C. T., Heimbürger, L.-E., Helgoe, J., Heller, M., Henderson, G. M., Henderson, P. B., van Heuven, S., Ho, P., Horner, T. J., Hsieh, Y.-T., Huang, K.-F., Humphreys, M. P., Ishiki, K., Jacquot, J. E., Janssen, D. J., Jenkins, W. J., John, S., Jones, E. M., Jones, J. L., Kadko, D. C., Kayser, R., Kenna, T. C., Khondoker, R., Kim, T., Kipp, L., Klar, J. K., Klunder, M., Kretschmer, S., Kumamoto, Y., Laan, P., Labatut, M., Lacan, F., Lam, P. J., Lambelet, M., Lamborg, C. H., Le Moigne, F. A. C., Le Roy, E., Lechtenfeld, O. J., Lee, J.-M., Lherminier, P., Little, S., López-Lora, M., Lu, Y., Masque, P., Mawji, E., McClain, C. R., Measures, C., Mehic, S., Barraqueta, J.-L. M., van der Merwe, P., Middag, R., Mieruch, S., Milne, A., Minami, T., Moffett, J. W., Moncoiffe, G., Moore, W. S., Morris, P. J., Morton, P. L., Nakaguchi, Y., Nakayama, N., Niedermiller, J., Nishioka, J., Nishiuchi, A., Noble, A., Obata, H., Ober, S., Ohnemus, D. C., van Ooijen, J., O’Sullivan, J., Owens, S., Pahnke, K., Paul, M., Pavia, F., Pena, L. D., Peters, B., Planchon, F., Planquette, H., Pradoux, C., Puigcorbé, V., Quay, P., Queroue, F., Radic, A., Rauschenberg, S., Rehkämper, M.,

- Rember, R., Remenyi, T., Resing, J. A., Rickli, J., Rigaud, S., Rijkenberg, M. J. A., Rintoul, S., Robinson, L. R., Roca-Martí, M., Rodellas, V., Roeske, T., Rolison, J. M., Rosenberg, M., Roshan, S., Rutgers van der Loeff, M. M., Ryabenko, E., Saito, M. A., Salt, L. A., Sanial, V., Sarthou, G., Schallenberg, C., Schauer, U., Scher, H., Schlosser, C., Schnetger, B., Scott, P., Sedwick, P. N., Semiletov, I., Shelley, R., Sherrell, R. M., Shiller, A. M., Sigmund, D. M., Singh, S. K., Slagter, H. A., Slater, E., Smethie, W. M., Snaith, H., Sohrin, Y., Soht, B., Sonke, J. E., Speich, S., Steinfeldt, R., Stewart, G., Stichel, T., Stirling, C. H., Stutsman, J., Swarr, G. J., Swift, J. H., Thomas, A., Thorne, K., Till, C. P., Till, R., Townsend, A. T., Townsend, E., Tuerena, R., Twining, B. S., Vance, D., Velazquez, S., Venchiarutti, C., Villa-Alfageme, M., Vivancos, S. M., Voelker, A. H. L., Wake, B., Warner, M. J., Watson, R., van Weerlee, E., Weigand, M. A., Weinstein, Y., Weiss, D., Wisotzki, A., Woodward, E. M. S., Wu, J., Wu, Y., Wuttig, K., Wyatt, N., Xiang, Y., Xie, R. C., Xue, Z., Yoshikawa, H., Zhang, J., Zhang, P., Zhao, Y., Zheng, L., Zheng, X.-T., Zieringer, M., Zimmer, L. A., Ziveri, P., Zunino, P., and Zurbrugg, C.: The GEOTRACES Intermediate Data Product 2017, *Chem. Geol.*, 493, 210–223, <https://doi.org/10.1016/j.chemgeo.2018.05.040>, 2018 (data available at: <https://www.bodc.ac.uk/geotraces/data/idp2017/>, last access: 1 September 2020).
- Sunda, W. G. and Huntsman, S. A.: Cobalt and zinc interreplacement in marine phytoplankton: Biological and geochemical implications, *Limnol. Oceanogr.*, 40, 1404–1417, <https://doi.org/10.4319/lo.1995.40.8.1404>, 1995.
- Sunda, W. G. and Huntsman, S. A.: Interrelated influence of iron, light and cell size on marine phytoplankton growth, *Nature*, 390, 389–392, <https://doi.org/10.1038/37093>, 1997.
- Sunda, W. G. and Huntsman, S. A.: Effect of Zn, Mn and Fe on Cd accumulation in phytoplankton: Implications for oceanic Cd cycling, *Limnol. Oceanogr.*, 45, 1501–1516, <https://doi.org/10.4319/lo.2000.45.7.1501>, 2000.
- Tagliabue, A., Sallee, J. B., Bowie, A. R., Levy, M., Swart, S., and Boyd, P. W.: Surface-water iron supplies in the Southern Ocean sustained by deep winter mixing, *Nat. Geosci.*, 7, 314–320, <https://doi.org/10.1038/Ngeo2101>, 2014.
- Thomalla, S., Turnewitsch, R., Lucas, M., and Poulton, A.: Particulate organic carbon export from the North and South Atlantic gyres: the $^{234}\text{Th}/^{238}\text{U}$ disequilibrium approach, *Deep Sea Res.*, 53, 1629–1648, <https://doi.org/10.1016/j.dsr2.2006.05.018>, 2006.
- Urien, C. M. and Ewing, M.: Recent Sediments and Environment of Southern Brazil, Uruguay, Buenos Aires, and Rio Negro Continental Shelf, in: *The Geology of Continental Margins*, edited by: Burk, C. A. and Drake, C. L., Springer, Berlin and Heidelberg, Germany, 157–177, https://doi.org/10.1007/978-3-662-01141-6_12, 1974.
- van Beek, P., Bourquin, M., Reyss, J.-L., Souhaut, M., Charette, M. A., and Jeande, C.: Radium isotopes to investigate the water mass pathways on the Kerguelen Plateau (Southern Ocean), *Deep-Sea Res.*, 55, 622–637, <https://doi.org/10.1016/j.dsr2.2007.12.025>, 2008.
- Vieira, L. H., Krisch, S., Hopwood, M. J., Beck, A. J., Scholten, J., Liebetrau, V., and Achterberg, E. P.: Unprecedented Fe delivery from the Congo River margin to the South Atlantic Gyre, *Nat. Commun.*, 11, 556, <https://doi.org/10.1038/s41467-019-14255-2>, 2020.
- Windom, H. L., Moore, W. S., Niencheski, L. F. H., and Jahnke, R. A.: Submarine groundwater discharge: a large, previously unrecognized source of dissolved iron to the South Atlantic Ocean, *Mar. Chem.*, 102, 252–266, <https://doi.org/10.1016/j.marchem.2006.06.016>, 2006.
- Wyatt, N. J., Milne, A., Woodward, E. M. S., Rees, A. P., Browning, T. J., Bouman, H. A., Worsfold, P. J., and Lohan, M. C.: Biogeochemical cycling of dissolved zinc along the GEOTRACES South Atlantic transect GA10 at 40°S, *Global Biogeochem. Cy.*, 28, 44–56, <https://doi.org/10.1002/2013GB004637>, 2014.
- Wyatt, N. J., Milne, A., Achterberg, E. P., Browning, T. J., Bouman, H. A., Woodward, E. M. S., and Lohan, M. C.: Seasonal cycling of zinc and cobalt in the Southeast Atlantic along the GEOTRACES GA10 section, *Biogeosciences Discuss.* [preprint], <https://doi.org/10.5194/bg-2020-42>, in review, 2020.
- Yamada, M. and Nozaki, Y.: Radium Isotopes in Coastal and Open Ocean Surface Waters of the Western North Pacific, *Mar. Chem.*, 19, 379–389, [https://doi.org/10.1016/0304-4203\(86\)90057-5](https://doi.org/10.1016/0304-4203(86)90057-5), 1986.