

Title	Underweight body mass index is a risk factor of mortality in outpatients with nocturia in Japan
Author(s)	Negoro, Hiromitsu; Sugino, Yoshio; Nishizawa, Koji; Soda, Takeshi; Shimizu, Yosuke; Yoshimura, Kenichi; Ogawa, Osamu; Yoshimura, Koji
Citation	BMC Research Notes (2015), 8
Issue Date	2015-09-29
URL	http://hdl.handle.net/2433/213947
Right	© 2015 Negoro et al. This article is distributed under the terms of the Creative Commons Attribution 4.0 International License (http://creativecommons.org/licenses/by/4.0/), which permits unrestricted use, distribution, and reproduction in any medium, provided you give appropriate credit to the original author(s) and the source, provide a link to the Creative Commons license, and indicate if changes were made.
Type	Journal Article
Textversion	publisher

RESEARCH ARTICLE

Open Access



Underweight body mass index is a risk factor of mortality in outpatients with nocturia in Japan

Hiromitsu Negoro¹, Yoshio Sugino^{1,4}, Koji Nishizawa^{2,5}, Takeshi Soda^{2,6}, Yosuke Shimizu^{1,7}, Kenichi Yoshimura^{3,8}, Osamu Ogawa¹ and Koji Yoshimura^{1,9*}

Abstract

Background: Although nocturia has been reported to increase mortality in elderly individuals, the particular risk factors that are associated with this event are unclear. Therefore, we evaluated risk factors for death in outpatients with nocturia.

Methods: Between October 2002 and December 2009, 250 consecutive patients with nocturia were enrolled in two general hospitals in Japan. Among them, 193 patients were able to be followed for at least 1 year and up to 9 years (median 4.8 years) if the patients did not die. Mortality rates and risk factors were evaluated in the nocturic outpatients.

Results: Two- and 5-year survival of the nocturic outpatients was 94.6 % [95 % confidence interval (CI) = 92.2–97.1] and 82.6 % (95 % CI = 75.4–87.8), respectively. Higher Charlson Comorbidity Score, lower body mass index (BMI) and lower Physical Component Summary of Short Form-36 item scores were significantly correlated with mortality ($p < 0.0001$, $p < 0.005$ and $p < 0.05$, respectively) in multivariate analysis. The International Prostate Symptom Score, Pittsburgh Sleep Quality Index, Mental or Role/Social Component Summary of Short Form-36 item scores and Nocturnal Polyuria index were not significantly correlated with mortality. The mortality rate was significantly higher in subjects with an underweight BMI (<18.50) compared with a normal range (18.50–24.99) or overweight (≥ 25.00) BMI [$p < 0.00005$, hazard ratio (HR) = 5.84, 95 % CI = 2.03–16.8; $p < 0.0005$, HR = 5.92, 95 % CI = 1.94–18.0].

Conclusions: Additional attention is required for nocturic outpatients with not only a high Charlson Comorbidity Score but also an underweight BMI because of their high mortality. Large prospective studies are warranted to validate this finding and extend more.

Keywords: Body mass index, Mortality, Nocturia, Risk factors

Background

Nocturia is a common lower urinary tract symptom (LUTS), which is associated with impaired quality of life (QOL), particularly when two or more episodes occur per night [1, 2]. Several epidemiological studies have reported increased mortality in people with nocturia [3–6]. According to the Third National Health and Nutrition

Examination Survey, which included more than 15,000 people, there is a significant trend of increased mortality risk with increased number of nightly voiding episodes in men and women [5]. Bursztyrn et al. suggested that nocturia was a significant independent predictor of mortality among 70-year-old patients with coronary heart diseases [4]. These studies have provided important information regarding the effect of nocturia on mortality. However, the risk factors of mortality in nocturic patients remain unclear, and a direct relationship between nocturia and mortality has not been clearly shown yet [7].

*Correspondence: ky7527@kuhp.kyoto-u.ac.jp

⁹ Present Address: Department of Urology, Shizuoka General Hospital, 4-27-1 Kita Ando, Shizuoka Aoi-ku, Shizuoka, Japan

Full list of author information is available at the end of the article

Because the cause of nocturia is multifactorial, including prostatic hyperplasia, age, psychological aspects, and medical problems, such as hypertension, diabetes, stroke, and obesity, the cause-and-effect associations are not always obvious [7]. These multifactorial and unclear aspects can also be applied to the cause of death in nocturic patients. However, nocturic patients might have a common risk factor in death. Therefore, we retrospectively reviewed the survival rate of outpatients who attended large general hospitals with the chief complaint of nocturia, and evaluated risk factors for death using multivariate statistics.

Methods

A total of 250 patients who attended the urology section of two general hospitals (Kurashiki Central Hospital and Kyoto University Hospital) with the chief complaint of nocturia (two or more episodes) between October 2002 and December 2009 were enrolled in this study with written informed consent. We reviewed the patients' records to determine their survival and causes of death. When insufficient data were achieved from the records, we used postal mail and telephone calls. The study conformed to the provisions of the Declaration of Helsinki and was approved by Kyoto University Graduate School and the Faculty of Medicine Ethics Committee (E-1037).

The follow-up period was at least 1 year and up to 9 years (median 5 years) if the patients did not die. We also evaluated age at the first visit, sex, body mass index (BMI), Charlson Comorbidity Score [8], and scores on several questionnaires administered at the first visit, to analyze correlates of mortality (Additional file 1). The number of nocturnal voids was evaluated using the seventh question of the International Prostate Symptom Score (IPSS). The questionnaires used in this study were the IPSS for assessment of general LUTS [9], the Medical Outcome Study Short Form-36 item (SF-36) for health-related QOL (HRQOL) [10, 11] and the Pittsburgh Sleep Quality Index for sleep status [12]. The Japanese versions of these questionnaires have been previously validated [13–15]. The Nocturnal Polyuria index (NPI), determined as nocturnal urine volume divided by total urine volume [1], was calculated from the bladder diary for at least 2 days. Prospectively collected data from these questionnaires were analyzed retrospectively in this study. Survival curves were obtained by the Kaplan–Meier method. We used Cox's proportional hazards model to assess risk factors for death. The assumption of proportional hazards was checked by testing for time-dependent hazards. Risk factors included age at first visit, sex (categorized), BMI, IPSS score 7, IPSS total score, IPSS QOL, SF-36 PCS, SF-36 MCS, SF-36 RCS, PSQI, NPI and Charlson Comorbidity Score. We performed forward stepwise regression

analysis to determine the association between several factors and a death in nocturic patients. Interaction between BMI and other factors were also examined. The SPSS ver.11.0.1) software (SPSS Inc., Chicago, IL, USA) was used statistical analyses. Survival curves were obtained by the Kaplan–Meier method with BMI categorized into three groups according to the WHO criteria (underweight <18.50; normal range 18.50–24.99; overweight \geq 25.0).

Results

We were able to follow 193 (77.2 %) patients up to 110 months (median 58.2 months) and 40 (20.1 %) patients died. The baseline characteristics of the study population are shown in Table 1 and in Additional file 1. Two- and 5-year survival of the nocturic outpatients was 94.6 % (95 % CI = 92.2–97.1) and 82.6 % (95 % CI = 75.4–87.8), respectively. Kaplan–Meier estimates of all-cause mortality in outpatients with nocturia are shown in Additional file 1. The causes of death of the nocturic patients were malignancy (n = 16, 40.0 %), respiratory infection (n = 5, 12.5 %), hematologic disease (n = 3, 7.5 %), cardiovascular disease (n = 2, 5.0 %), diabetes mellitus (n = 2, 5.0 %) and others (n = 12, 30.0 %; including traffic accidents, rheumatism, pneumothorax, spinocerebellar degeneration, suicide, senility, spinal infraction, and unknown).

Univariate analysis showed that age at the first visit ($p \leq 0.001$), low BMI ($p \leq 0.0001$), low SF-36 Physical Component Summary score ($p \leq 0.01$) and Charlson Comorbidity Score ($p \leq 0.0001$) were significant

Table 1 Clinical characteristics of the study population

Characteristics	Total
No. patients	193
Age, median (IQR) (years)	73 (11)
Female, no. (%)	37 (19.2)
BMI, median (IQR)	22.5 (3.4)
IPSS score 7, median (IQR)	4 (1)
IPSS total score, median (IQR)	15 (9)
IPSS QOL, median (IQR)	4 (1)
SF-36 PCS, median (IQR)	46.0 (14.6)
SF-36 MCS, median (IQR)	49.8 (12.9)
SF-36 RCS, median (IQR)	47.0 (23.0)
PSQI, median (IQR)	8 (6.8)
NPI, median (IQR)	0.43 (0.32)
Charlson Comorbidity Score	1 (2)
Follow up (years)	4.85 (4.99)

IQR interquartile range, BMI body mass index, IPSS International Prostate Symptom Score, SF-36 Medical Outcome Study Short Form-36 item for health-related QOL, PCS Physical Component Summary, MCS Mental Component Summary, RCS Role Component Summary, PSQI Pittsburgh Sleep Quality Index, NPI Nocturnal Polyuria index

correlates of mortality, while frequency of nocturia shown by IPSS score 7 or relative nighttime urine production indicated by NPi was not (Table 2). In multivariate analysis, low BMI, low SF-36 Physical Component Summary score and high Charlson Comorbidity Score were significantly correlated with mortality [$p < 0.005$, hazard ratio (HR) = 0.83, 95 % confidence interval (CI) = 0.74–0.94; $p < 0.05$, HR = 0.97, 95 % CI = 0.95–1.00; $p < 0.0001$, HR = 1.44, 95 % CI = 1.21–1.71, respectively; no significant interaction was observed between BMI and Charlson Comorbidity Score or SF-36 PCS] (Table 2).

Patients were divided into three groups according to BMI of WHO criteria (underweight <18.50, normal range 18.50–24.99, overweight ≥ 25.0) (Table 3). Kaplan–Meier curves of the three BMI groups are shown in Fig. 1. The mortality rate was significantly higher in subjects with underweight BMI compared with those with normal range or overweight ($p < 0.00005$, HR = 5.84, 95 % CI = 2.03–16.8; $p < 0.0005$, HR = 5.92, 95 % CI = 1.94–18.0).

Discussion

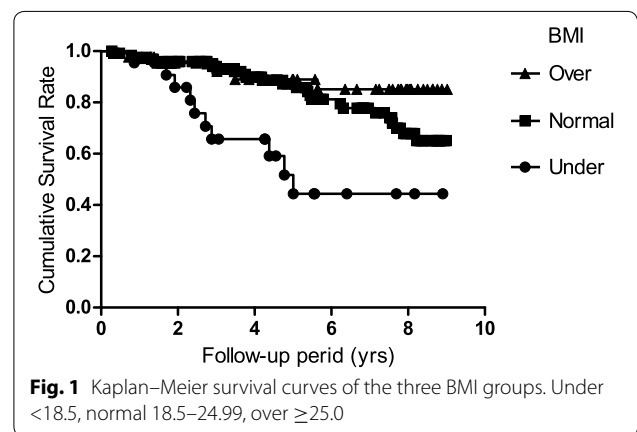
In this study, we showed that underweight BMI, as well as lower Physical Component Summary of Short Form-36 item scores and high Charlson Comorbidity Score, was a risk factor of mortality of nocturic outpatients in

Table 3 Clinical characteristics of the patients according to the BMI

Characteristics	BMI			P value*
	<18.50	18.50–24.99	≥ 25.00	
No. patients	22	128	43	
Age (years), median (IQR)	75 (10)	73 (11)	70 (9)	<0.05
Female, no. (%)	7 (31.8)	23 (18.0)	7 (16.3)	0.27
BMI, median (IQR)	17.4 (1.5)	21.9 (3.1)	27.1 (3.4)	NA
IPSS score 7, median (IQR)	4 (1.3)	4 (1.0)	4 (1)	0.54
IPSS total score, median (IQR)	11 (13.8)	15 (9)	15 (10)	0.74
IPSS QOL, median (IQR)	5 (1)	5 (1)	4 (1.3)	0.21
SF-36 PCS, median (IQR)	40.3 (25.6)	46.1 (14.4)	47.0 (11.6)	0.74
SF-36 MCS, median (IQR)	48.0 (13.4)	50.2 (14.1)	49.5 (12.5)	0.46
SF-36 RCS, median (IQR)	38.9 (30.5)	47.1 (23.3)	47.1 (23.3)	0.3
PSQI, median (IQR)	9 (6)	8 (7)	7.5 (7)	0.81
NPi, median (IQR)	0.46 (0.37)	0.43 (0.32)	0.43 (0.35)	0.59
Charlson Comorbidity Score	1 (2)	1 (2)	0 (2)	0.36
Follow up (years), median (IQR)	4.27 (3.25)	4.73 (4.91)	5.65 (6.07)	0.21

Table 2 Cox regression analyses predicting the death in nocturia patients

	Univariate analysis	
	OR (95 % CI)	P value*
Age at first visit	1.09 (1.04–1.14)	<0.001
Female	0.53 (0.21–1.35)	0.18
BMI	0.81 (0.73–0.90)	<0.0001
IPSS score 7	1.17 (0.83–1.64)	0.38
IPSS total score	1.01 (0.96–1.01)	0.78
IPSS QOL	1.17 (0.88–1.56)	0.29
SF-36 PCS	0.97 (0.94–0.99)	<0.01
SF-36 MCS	0.99 (0.96–1.03)	0.54
SF-36 RCS	0.99 (0.96–1.01)	0.3
PSQI	1.00 (0.91–1.09)	0.93
NPi	0.59 (0.06–5.60)	0.64
Charlson Comorbidity Score	1.42 (1.24–1.63)	<0.0001
Multivariate analysis		
	OR (95 % CI)	P value*
Age at first visit	1.05 (0.98–1.11)	0.15
BMI	0.83 (0.74–0.94)	<0.005
SF-36 PCS	0.97 (0.95–1.00)	<0.05
Charlson Comorbidity Score	1.44 (1.21–1.71)	<0.0001



two general hospitals in Japan (Kurashiki Central Hospital and Kyoto University Hospital).

Of note, high BMI is suggested as a risk factor for nocturia [16]. Therefore, a higher BMI population tends to be more nocturic than others, similar to metabolic syndrome. However, whether BMI is related to mortality of nocturic patients is unknown. BMI did not have any significant interaction with Charlson Comorbidity Score or Physical Component Summary of Short Form-36 item, indicating that participants did not tend have low

BMI simply because they were ill. It has recently been reported that BMI is inversely related to all-cause mortality in elderly people [17, 18]. A large study conducted in Japan showed that a low BMI in elderly people was associated with an increased risk of all-cause mortality, and the results were essentially unchanged, even when the analyses were conducted in those who did not have cancer, cardiovascular disease, or stroke [17]. Moreover, higher BMI patients had improved survival rate in decompensated congestive heart failure [19] and in chronic heart failure [20]. This paradoxical phenomenon was extended to the general population in a systemic review and meta-analysis [21]. The exact reasons are not clear, but explanations for this paradox are that lean mass acts as a nutritional preserve and thin older patients may have less immune response [22]. These factors may apply to nocturic elderly people.

In the present study, the cause of death largely depended on the comorbidities. This is considered to be because subjects were outpatients with nocturia from two relatively large general hospitals, although the survival rate of the nocturic patients in the present study was not lower than that of the Japanese population calculated using age- and sex-specific population estimates released by the Japanese Ministry of Internal Affairs and Communications (using <http://www.e-stat.go.jp/SG1/estat/XlsdlE.do?sinfid=000000090264>; data not shown). Therefore, we re-analyzed particular groups selected with Charlson Comorbidity Score between 0 and 2 ($n = 166$) in the same manner (Additional file 1). The result showed a clearer impact of BMI solely on the mortality, with hazard ratio of 0.73 (95 % CI 0.62–0.88) in multivariate analysis. The Charlson Comorbidity Score was not significantly related to the mortality in this particular group, indicating that multiple comorbidities rather than the individual factor could drive the event. In addition, the overweight BMI group had a significantly better survival rate than the normal BMI group, with hazard ratio of 3.00 ($p < 0.05$, 95 % CI = 1.01–8.94). This result suggests that although obesity is reported to be a risk factor of nocturia, the overweight BMI is a favorable factor of survival in nocturic outpatients without comorbidity or with relatively mild one. This paradox can be compatible to the reported relationship between mortality and BMI after fracture [23].

There are several study limitations in this study. The purpose of this study was to assess the association of BMI and all-cause mortality, while further detailed study into the influence of BMI on the cause-specific mortality would be variable. The association between nocturia and falls/fractures, and its relation to mortality was reported [6, 24–26]. However, the low incidence

of death in the present was not enough to evaluate it and we cannot find any case that had a direct relation to fractures and death in the present study except the case of traffic accident. The low incidence of death might not have sufficient power to evaluate the factor of death in nocturic patients, which indicate that the other covariates examined might have a relation to death. Age or sex-related disease could be associated with weight loss and death [17, 27]. In addition, it cannot be denied that other undetected factors are related to the mortality risk increased in low-BMI nocturic patients. Only one series of measures was obtained from participants, even though the survival rates was referred with that of the Japanese population calculated using age- and sex-specific population estimates released by the Japanese Ministry of Internal Affairs and Communications. This design makes it difficult to ascribe directionality to any other observed effects. Other limitations of this study are that participants were all Japanese, so the relationship of the BMI and mortality might be different in other countries. The lowest risk of mortality was observed in the middle and elderly Japanese people with BMI between 21 and 27 [27]. Although the WHO expert consultation agreed the WHO BMI cut-off points retained as international classifications, but the Asians generally have a higher percentage of body fat than Caucasians of the same age, sex, and BMI [28]. Further study is warranted in more ethnically diverse populations. Taking into account these limitations, we believe that our results give novel insights into risk factors of mortality in nocturic patients.

Conclusion

Additional attention should be paid to nocturic patients with underweight BMI visiting large general hospitals because they may have high mortality. Large prospective studies are needed to validate our findings and extend more.

Additional file

Additional file 1. Charlson Comorbidity Score, Kaplan–Meier of all-cause mortality and analyses predicting death in nocturic patients with Charlson Comorbidity Score 0-2.

Abbreviations

BMI: body mass index; IPSS: International Prostate Symptom Score; LUTS: lower urinary tract symptoms; SF-36: Medical Outcome Study Short Form-36 item; PCS: Physical Component Summary; MCS: Mental Component Summary; RCS: Role Component Summary; PSQI: Pittsburgh Sleep Quality Index; NPI: Nocturnal Polyuria index.

Authors' contributions

HN, YoshioS and KojiY drafted the manuscript. HN, YoshioS, KN, TS, YosukeS and KojiY acquired data and interpreted the data. HN, YoshioS, KenichiY and KojiY made statistical analysis. HN and KojiY did critical revision of the

manuscript for important intellectual content. KojiY and OO did concept of design and supervision. All authors read and approved the final manuscript.

Author details

¹ Department of Urology, Kyoto University Graduate School of Medicine, Kyoto, Japan. ² Department of Urology, Kurashiki Central Hospital, Okayama, Japan. ³ Department of Clinical Trial Design and Management, Translational Research Center, Kyoto University Hospital, Kyoto, Japan. ⁴ Present Address: Department of Urology, Kobe City Medical Center General Hospital, Kobe, Japan. ⁵ Present Address: Department of Urology, Shiga Medical Center for Adults, Shiga, Japan. ⁶ Present Address: Department of Urology, Kitano Hospital, Osaka, Japan. ⁷ Present Address: Department of Urology, West Kobe Medical Center, Kobe, Japan. ⁸ Present Address: Innovative Clinical Research Center, Kanazawa University, Kanazawa, Japan. ⁹ Present Address: Department of Urology, Shizuoka General Hospital, 4-27-1 Kita Ando, Shizuoka Aoi-ku, Shizuoka, Japan.

Compliance with ethical guidelines

Competing interests

The authors declare they have no competing interests.

Received: 4 August 2015 Accepted: 16 September 2015

Published online: 29 September 2015

References

- van Kerrebroeck P, Abrams P, Chaikin D, et al. The standardisation of terminology in nocturia: report from the Standardisation Sub-committee of the International Continence Society. *Neurourol Urodyn*. 2002;21:179–83.
- Hakkinen JT, Hakama M, Shiri R, Auvinen A, Tammela TL, Koskimaki J. Incidence of nocturia in 50 to 80-year-old Finnish men. *J Urol*. 2006;176:2541–5.
- Asplund R. Mortality in the elderly in relation to nocturnal micturition. *BJU Int*. 1999;84:297–301.
- Bursztyrn M, Jacob J, Stessman J. Usefulness of nocturia as a mortality risk factor for coronary heart disease among persons born in 1920 or 1921. *Am J Cardiol*. 2006;98:1311–5.
- Kupelian V, Fitzgerald MP, Kaplan SA, Norgaard JP, Chiu GR, Rosen RC. Association of nocturia and mortality: results from the Third National Health and Nutrition Examination Survey. *J Urol*. 2011;185:571–7.
- Nakagawa H, Niu K, Hozawa A, et al. Impact of nocturia on bone fracture and mortality in older individuals: a Japanese longitudinal cohort study. *J Urol*. 2010;184:1413–8.
- Yoshimura K. Correlates for nocturia: a review of epidemiological studies. *Int J Urol*. 2012;19:317–29.
- Charlson ME, Pompei P, Ales KL, MacKenzie CR. A new method of classifying prognostic comorbidity in longitudinal studies: development and validation. *J Chronic Dis*. 1987;40:373–83.
- Barry MJ, Fowler FJ Jr, O'Leary MP, et al. The American Urological Association symptom index for benign prostatic hyperplasia. The Measurement Committee of the American Urological Association. *J Urol*. 1992;148:1549–57.
- Hays RD, Sherbourne CD, Mazel RM. The RAND 36-item health survey 1.0. *Health Econ*. 1993;2:217–27.
- Ware JE Jr, Sherbourne CD. The MOS 36-item short-form health survey (SF-36). I. Conceptual framework and item selection. *Med Care*. 1992;30:473–83.
- Buysse DJ, Reynolds CF 3rd, Monk TH, Berman SR, Kupfer DJ. The Pittsburgh Sleep Quality Index: a new instrument for psychiatric practice and research. *Psychiatry Res*. 1989;28:193–213.
- Fukuhara S, Bito S, Green J, Hsiao A, Kurokawa K. Translation, adaptation, and validation of the SF-36 health survey for use in Japan. *J Clin Epidemiol*. 1998;51:1037–44.
- Homma Y, Tsukamoto T, Yasuda K, Ozono S, Yoshida M, Shinji M. Linguistic validation of Japanese version of International Prostate Symptom Score and BPH impact index. *Nihon Hinyokika Gakkai Zasshi*. 2002;93:669–80.
- Doi Y, Minowa M, Uchiyama M, et al. Psychometric assessment of subjective sleep quality using the Japanese version of the Pittsburgh Sleep Quality Index (PSQI-J) in psychiatric disordered and control subjects. *Psychiatry Res*. 2000;97:165–72.
- Fitzgerald MP, Litman HJ, Link CL, McKinlay JB. The association of nocturia with cardiac disease, diabetes, body mass index, age and diuretic use: results from the BACH survey. *J Urol*. 2007;177:1385–9.
- Tamakoshi A, Yatsuya H, Lin Y, et al. BMI and all-cause mortality among Japanese older adults: findings from the Japan collaborative cohort study. *Obesity (Silver Spring)*. 2010;18:362–9.
- Weiss A, Beloosesky Y, Boaz M, Yalov A, Kornowski R, Grossman E. Body mass index is inversely related to mortality in elderly subjects. *J Gen Intern Med*. 2008;23:19–24.
- Fonarow GC, Srikanthan P, Costanzo MR, Cintron GB, Lopatin M. An obesity paradox in acute heart failure: analysis of body mass index and in hospital mortality for 108,927 patients in the Acute Decompensated Heart Failure National Registry. *Am Heart J*. 2007;153:74–81.
- Kenchaiah S, Pocock SJ, Wang D. Body mass index and prognosis in heart failure: assessment of reduction in mortality and morbidity (CHARM) program. *Circulation*. 2007;116:627–36.
- Flegal KM, Kit BK, Orpana H, Graubard BI. Association of all-cause mortality with overweight and obesity using standard body mass index categories: a systematic review and meta-analysis. *JAMA*. 2013;309:71–82.
- Chandra RK. Nutrition the immune system: an introduction. *Am J Clin Nutr*. 1997;66:460S–3S.
- Prieto-Alhambra D, Premaor MO, Aviles FF, et al. Relationship between mortality and BMI after fracture: a population-based study of men and women aged ≥ 40 years. *J Bone Miner Res*. 2014;29:1737–44.
- Asplund R. Hip fractures, nocturia, and nocturnal polyuria in the elderly. *Arch Gerontol Geriatr*. 2006;43:319–26.
- Temml C, Ponholzer A, Gutjahr G, Berger I, Marszalek M, Madersbacher S. Nocturia is an age-independent risk factor for hip-fractures in men. *Neurourol Urodyn*. 2009;28:949–52.
- Galizia G, Langellotto A, Cacciatore F, et al. Association between nocturia and falls-related long-term mortality risk in the elderly. *J Am Med Dir Assoc*. 2012;13:640–4.
- Sasazuki S, Inoue M, Tsuji I, et al. Body mass index and mortality from all causes and major causes in Japanese: results of a pooled analysis of 7 large-scale cohort studies. *J Epidemiol*. 2011;21:417–30.
- WHO Expert Consultation. Appropriate body-mass index for Asian populations and its implications for policy and intervention strategies. *Lancet*. 2004;363:157–63.

Submit your next manuscript to BioMed Central and take full advantage of:

- Convenient online submission
- Thorough peer review
- No space constraints or color figure charges
- Immediate publication on acceptance
- Inclusion in PubMed, CAS, Scopus and Google Scholar
- Research which is freely available for redistribution

Submit your manuscript at
www.biomedcentral.com/submit

