

Title	Identifying pelagic habitat hotspots of neon flying squid in the temperate waters of the central North Pacific
Author(s)	Alabia, Irene D.; Saitoh, Sei Ichi; Mugo, Robinson; Igarashi, Hiromichi; Ishikawa, Yoichi; Usui, Norihisa; Kamachi, Masafumi; Awaji, Toshiyuki; Seito, Masaki
Citation	PLOS ONE (2015), 10(11)
Issue Date	2015-11-16
URL	http://hdl.handle.net/2433/210354
Right	© 2015 Alabia et al. This is an open access article distributed under the terms of the Creative Commons Attribution License, which permits unrestricted use, distribution, and reproduction in any medium, provided the original author and source are credited.
Type	Journal Article
Textversion	publisher

RESEARCH ARTICLE

Identifying Pelagic Habitat Hotspots of Neon Flying Squid in the Temperate Waters of the Central North Pacific

Irene D. Alabia^{1,2*}, Sei-Ichi Saitoh^{1,2}, Robinson Mugo³, Hiromichi Igarashi⁴, Yoichi Ishikawa⁴, Norihisa Usui⁵, Masafumi Kamachi⁵, Toshiyuki Awaji⁶, Masaki Seito⁷

1 Arctic Research Center, Hokkaido University, N21 W11 Kita-Ku, Sapporo, 001–0021, Japan, **2** Laboratory of Marine Environment and Resource Sensing, Graduate School of Fisheries Sciences, Hokkaido University, 3-1-1 Minato-cho, Hakodate, 041–8611, Hokkaido, Japan, **3** Regional Centre for Mapping of Resources for Development—SERVIR-Africa, Kasarani Road, P.O. Box 632–00618, Ruaraka, Nairobi, Kenya, **4** Data Research Center for Marine-Earth Sciences, Japan Agency for Marine Earth-Science and Technology, JAMSTEC, 3173–25 Showamachi, Kanazawa-ward, Yokohama City, Kanagawa, 236–0001, Japan, **5** Oceanographic Research Department, Meteorological Research Institute, 1–1 Nagamine, Tsukuba, 305–0052, Japan, **6** Graduate School of Science Division of Earth and Planetary Science, Kyoto University, Sakyo-ward, Kyoto, 606–8502, Japan, **7** Aomori Prefectural Industrial Technology Research Center, 4-11-6 Dainitonya-machi, Aomori-shi, Aomori, 030–0113, Japan

* irenealabia@salmon.fish.hokudai.ac.jp



OPEN ACCESS

Citation: Alabia ID, Saitoh S-I, Mugo R, Igarashi H, Ishikawa Y, Usui N, et al. (2015) Identifying Pelagic Habitat Hotspots of Neon Flying Squid in the Temperate Waters of the Central North Pacific. PLoS ONE 10(11): e0142885. doi:10.1371/journal.pone.0142885

Editor: Geir Ottersen, Institute of Marine Research, NORWAY

Received: July 1, 2015

Accepted: October 28, 2015

Published: November 16, 2015

Copyright: © 2015 Alabia et al. This is an open access article distributed under the terms of the [Creative Commons Attribution License](https://creativecommons.org/licenses/by/4.0/), which permits unrestricted use, distribution, and reproduction in any medium, provided the original author and source are credited.

Data Availability Statement: All relevant data are within the paper and its Supporting Information files.

Funding: This study was supported by the Research on Climate Change Adaptation (RECCA) Project from the Grant-in-Aid (Grant No. 10101028) from Japan's Ministry of Education, Culture, Sports, Science and Technology (MEXT). The funders had no role in study design, data collection and analysis, decision to publish, or preparation of the manuscript.

Competing Interests: The authors have declared that no competing interests exist.

Abstract

We identified the pelagic habitat hotspots of the neon flying squid (*Ommastrephes bartramii*) in the central North Pacific from May to July and characterized the spatial patterns of squid aggregations in relation to oceanographic features such as mesoscale oceanic eddies and the Transition Zone Chlorophyll-a Front (TZCF). The data used for the habitat model construction and analyses were squid fishery information, remotely-sensed and numerical model-derived environmental data from May to July 1999–2010. Squid habitat hotspots were deduced from the monthly Maximum Entropy (MaxEnt) models and were identified as regions of persistent high suitable habitat across the 12-year period. The distribution of predicted squid habitat hotspots in central North Pacific revealed interesting spatial and temporal patterns likely linked with the presence and dynamics of oceanographic features in squid's putative foraging grounds from late spring to summer. From May to June, the inferred patches of squid habitat hotspots developed within the Kuroshio-Oyashio transition zone (KOTZ; 37–40°N) and further expanded north towards the subarctic frontal zone (SAFZ; 40–44°N) in July. The squid habitat hotspots within the KOTZ and areas west of the dateline (160°W–180°) were likely influenced and associated with the highly dynamic and transient oceanic eddies and could possibly account for lower squid suitable habitat persistence obtained from these regions. However, predicted squid habitat hotspots located in regions east of the dateline (180°–160°W) from June to July, showed predominantly higher squid habitat persistence presumably due to their proximity to the mean position of the seasonally-shifting TZCF and consequent utilization of the highly productive waters of the SAFZ.

Introduction

The complex environment of pelagic oceans provides a broad range of habitats exploited by marine organisms at different stages of their life history. Distinct spatial environmental features are often recognized and used by marine organisms for different biological and physiological functions to ensure their survival. For instance, pelagic species are typically associated with certain environmental factors and mesoscale oceanographic features such as meandering front and eddies [1, 2, 3]. These oceanographic features thus in turn, are relevant to the formation of “hotspots”, which are defined as regions of intense biological activity and persistent species aggregations driven by enhanced trophic interactions and foraging conditions and are mostly targeted by the commercial and artisanal fishery [4, 5]. Hence, the oceanic hotspots constitute important biological features of high ecological and economic importance. With the heightened exposure of marine ecosystems to various anthropogenic and climate perturbations, identifying and characterizing the marine hotspots are central for setting up conservation priorities and evaluating resource management strategies [6, 7, 8].

Neon flying squid (*Ommastrephes bartramii*) is a large cephalopod widely distributed in the subtropical and temperate oceans [9]. It is one of the internationally (i.e. Japan, China, South Korea and Taiwan) exploited fisheries of high commercial value in the North Pacific and together with other squid species, it accounts for approximately 5% of the total landings in the region [10]. The commercial fishery for this species started when the catches of Japanese common squid (*Todarodes pacificus*) dramatically decreased in the 1970s [11] and commercial harvesting of the neon flying squid resources in the North Pacific continued since then. On the ecological perspective, *O. bartramii* further assumes important ecological roles in the pelagic ecosystem owing to its mid-trophic position in the oceanic food webs [12]. Previous studies on the feeding habits and diet of neon flying squid revealed that it generally preys on crustaceans, small pelagic fishes and cephalopods [13, 14]. It is also an important prey species for the larger predators [15, 16] and is thereby thought to create important connections between animals of tertiary trophic level and top predators.

Moreover, in the North Pacific, *O. bartramii* population is comprised of two seasonal spawning cohorts (winter-spring and autumn) with life histories extremely dependent on the variability of spatial and temporal features of the oceanographic environment [17, 18, 19, 20]. For instance, the squids’ annual roundtrip north-south migration for feeding and spawning is linked with the northern warm-water branches and the warm-core rings of the Kuroshio Current [21, 22]. The differences in the body size between the two cohorts, with the autumn spawning cohorts generally larger than the winter-spring cohorts, are further traced from variations in the oceanic environments off their spawning/nursery and northward migration habitats [23, 24]. Specifically, the spatial and temporal mismatches on the utilization of frontal feature such as the Transition Zone Chlorophyll-a Front (TZCF) [25] between the two cohorts during the early life stages, accounted for their growth differences.

Species-environment studies using predictive models are based on the hypothesis that the species optimal habitats are shaped by biological and environmental controls [26, 27, 28]. In the marine ecosystem, oceanographic variables are frequently used as proxy indicators to examine the effects of biophysical processes to species distribution and abundance [29, 30, 31, 32]. In the present work, we selected the most parsimonious set of environmental variables that significantly influenced the monthly potential habitat of neon flying squid in the central North Pacific from a larger pool of biologically-important and available environmental data using the Maximum entropy (MaxEnt) [33] models. From spatial predictions of squid suitable habitat, we further investigated the stability of these regions and developed a simple measure of habitat persistence to identify potential squid habitat hotspots in the central North Pacific. The spatial

and temporal dynamics of the observed squid habitat hotspots were subsequently described in relation to the presence of oceanic eddies and mean geographical positions of the TZCF.

Materials and Methods

Squid fishery information

Squid fishing locations were provided by Aomori Prefectural Industrial Technology Research Center (APITRC) during the squid fishing periods from May to July, 1999–2010, covering the Japanese jigging area in the central North Pacific (170°E–160°W; 30–50°N; [Fig 1](#)). The dataset contained the point data information on the daily commercial jigging vessel fishing locations (Longitude, Latitude) and fishing date (Month, Day, Year), where all the squid occurrence data used for habitat model analyses have positive (non-zero) squid catches ([S1 Fig](#)). These were subsequently pooled into the respective monthly databases for an effort-based habitat model development.

Environmental variables

The environmental (dynamic and static) data used for the analyses were obtained from satellite measurements and numerical model products ([Table 1](#)). The remotely-sensed variables were sea surface temperature (SST), sea surface height (SSH), geostrophic velocity components (u , v), eddy kinetic energy (EKE), net primary productivity (NPP) and chlorophyll-*a* (Chl-*a*) while the numerical model-derived oceanographic variables were sea surface salinity (SSS) and mixed layer depth (MLD). The satellite data were downloaded from the National Oceanic and Atmospheric Administration (NOAA) coastwatch server (coastwatch.pfeg.noaa.gov/erddap/) except for NPP, which were obtained from Oregon State University (OSU) ocean productivity website (science.oregonstate.edu/ocean.productivity/) while the EKE was computed from the altimetry-derived geostrophic velocity components (u , v) [[34](#)]. The numerical model products were derived from 3-dimensional multi-variate ocean variational estimation (MOVE) system for Western North Pacific (MOVE-WNP), developed by the Japan's Meteorological Research Institute (MRI) [[35](#)]. The static environmental variable examined was the bathymetric gradient (∇depth), computed using the ETOPO1 bathymetry data [[36](#)] derived from global relief model of Earth's surface, provided by the NOAA National Centers for Environmental Information (NCEI) (ngdc.noaa.gov/mgg/global/). The bathymetric gradient was derived using the slope function of SDMTTools package [[37](#)]. Due to the differences in spatial and temporal resolutions, all environmental data were resampled into the coarsest available spatial footprint (25 km) and sampling interval (monthly) prior to habitat model construction.

Habitat model development

Fishing effort and catch per unit effort (CPUE) are generally considered as reliable proxies of species presence and abundance, respectively and have been increasingly used for developing habitat models [[38](#), [39](#), [40](#)]. However, for the neon flying squid, effort-based habitat models performed better than CPUE-based models in predicting the potential squid habitat as the latter tended to overestimate the ranges of the optimal squid habitats and underestimate the monthly variability in spatial distributions of the optimal habitats [[20](#), [41](#)]. Moreover, earlier studies on other fisheries have also shown that the fishing effort is a better index of resource distribution relative to CPUE in a system where potential competition for space on the best fishing grounds occurs [[42](#), [43](#), [44](#)]. Therefore, in this study we utilized the squid presence data with positive squid catches in relation to the parsimonious sets of environmental data, to identify the potential squid habitat in the central North Pacific. The habitat models were

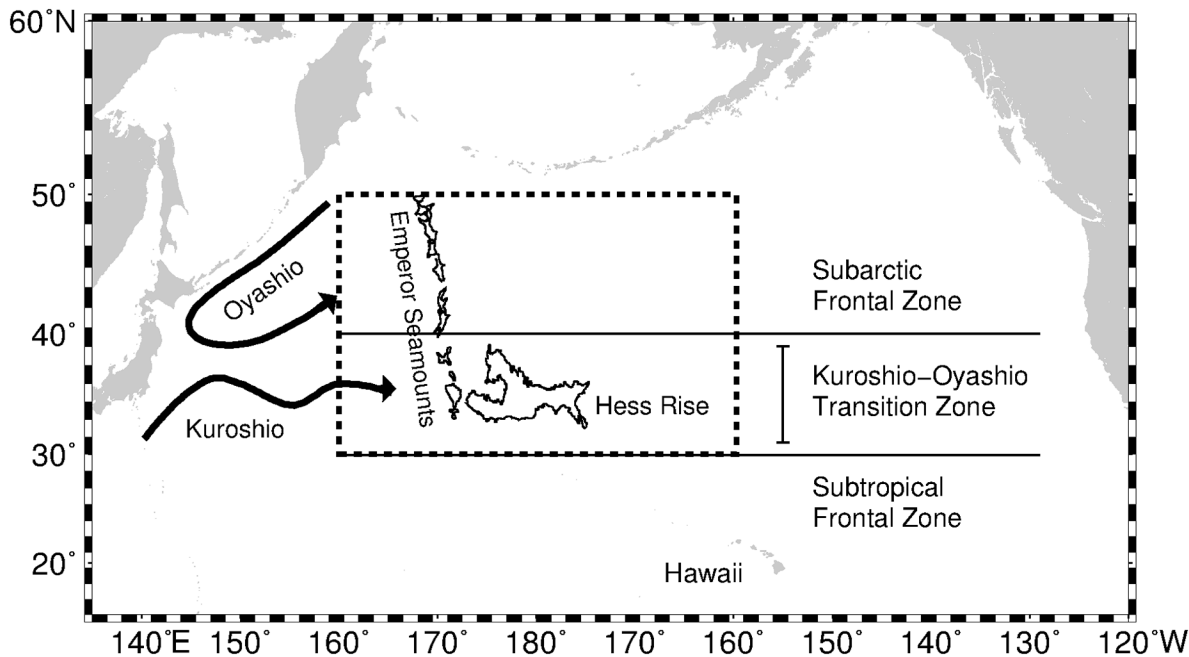


Fig 1. Map of the North Pacific showing the major oceanographic and topographic features. The broken lines correspond to the Japanese squid fishing region in the central North Pacific.

doi:10.1371/journal.pone.0142885.g001

constructed within the information theoretic approach primarily based on maximum entropy (MaxEnt) algorithm [33]. MaxEnt is a model approach that determines the probability of suitable habitat for a species at each pixel within the geographic domain, by combining both environmental layers and species occurrence dataset [33]. MaxEnt model has been successfully used in a broad range of terrestrial [45, 46] and marine [47, 48] applications. In this paper, we used MaxEnt to identify and characterize the environmental parameters (both dynamic and static) that better describe the habitat of squids and consequently create the spatial predictions of potential squid habitat in the central North Pacific. The MaxEnt models were separately ran using the MaxEnt software, version 3.3.3k (cs.princeton.edu/~schapire/maxent/) for May, June and July from the monthly-pooled squid occurrences from 1999 to 2010 and initial suite of the

Table 1. Summary of environmental parameters used for developing habitat models for neon flying squid in the central North Pacific.

Environmental Variables	Abbreviation	Sampling Interval	Spatial Footprint	Primary Source
Sea surface temperature	SST	Daily	25 km	AVHRR
Sea surface salinity	SSS	5-day mean	10 km	MOVE-MRI
Chlorophyll-a	Chl-a	Monthly	9 km	SeaWIFS
Net primary productivity	NPP	Monthly	9 km	SeaWIFS
Sea surface height	SSH	Daily	25 km	AVISO
Zonal geostrophic velocity	geostrophic_u	Daily	25 km	AVISO
Meridional geostrophic velocity	geostrophic_v	Daily	25 km	AVISO
Eddy kinetic energy	EKE	Daily	25 km	AVISO
Mixed layer depth	MLD	5-day mean	10 km	MOVE-MRI
Bathymetric gradient	∇ dep	-	1-arc minute	ETOPO1

doi:10.1371/journal.pone.0142885.t001

environmental and topographic factors that could potentially influenced the squid habitat. The exploratory monthly MaxEnt habitat models were initially developed using the sample with data (SWD) (www.cs.princeton.edu/~schapire/maxent/tutorial/tutorial.doc), which contained the spatially-matched squid occurrences and the corresponding values of the 10 environmental layers at each presence point (Table 1). The background SWD file was subsequently created by pooling the randomly-selected pseudo-absences (500 points) for each of the environmental variable. The monthly squid presence data were then split into model training (70%) and testing (30%) data to evaluate the models' predictive performance and select the most important environmental variables to squid habitat, using Area under the curve (AUC) of the Receiver Operating Characteristic (ROC) [49] and percent variable contribution, respectively. Following the environmental layer selection from preliminary analyses, the 3 most influential factors for each monthly models based on the percent variable contribution, were then used to construct the final MaxEnt models for predicting the potential squid habitats from May to July, 1999–2010. The response curves generated from each models were then examined to deduce the environmental ranges characterizing the potential squid habitat in the Central North Pacific.

Spatial patterns of habitat predictions

The monthly habitat predictions derived from the MaxEnt models were expressed in a habitat probability metric, hereafter referred to as habitat suitability index (HSI), with values ranging from 0 (not suitable) to 1 (most suitable). To examine the monthly spatial squid habitat patterns, HSI predictions were averaged monthly and the pixel-wise standard deviations (SD) were then computed from 1999 to 2010. Pixel-wise SDs provide a measure of uncertainty for the monthly HSI predictions across the 12-year period [50]. The regions with high and low HSI SDs are interpreted as the areas with variable and stable squid potential habitats, respectively.

Spatiotemporal overlap of squid potential habitat

The spatial and temporal overlap of predicted squid habitats from May to July 1999–2010 were designed to identify the potential squid habitat hotspots in the Central North Pacific. Using this measure, potential habitat hotspots for squids are defined by high temporal overlap, that is, the number of years that a pixel was predicted as a suitable habitat based on a given threshold. For this purpose, HSI threshold used to classify the monthly squid habitat predictions into 0 (not suitable) and 1 (suitable) were arbitrarily represented by the 25th percentile of HSI distribution extracted from the actual squid fishing locations. The monthly binary maps were then summed up and divided by the entire duration of the study (12 years) to determine the relative pixel-wise potential habitat overlap over time, thereby, creating a simple habitat persistence index, hereafter referred to as the HPI, with values ranging from 0 to 1. Using this index, squid habitat hotspots correspond to the regions with high HPI and its monthly spatial distributions in central North Pacific were subsequently mapped. All the mapping routines were implemented using generic mapping tools (GMT) version 4.5.12.

Oceanographic features and squid habitat hotspots

After identifying the regions of potential habitat hotspots for squid in the Central North Pacific, we briefly explored the relevance of oceanographic features such as the seasonally-migrating transition zone chlorophyll-*a* front (TZCF) and oceanic eddies to the squid potential habitat hotspots. TZCF is one of the important frontal features in the North Pacific that affects foraging condition and migration habitat for many pelagic species [51, 52, 53]. Inter-annual variation in the TZCF positions also resulted to the changes in neon flying squid abundance

[54]. Here, the climatological means of SeaWiFS chlorophyll-*a* data for May, June and July 1999–2010 were computed and monthly climatological positions of the TZCF, defined by $0.2 \text{ mg}\cdot\text{m}^{-3}$ [25], were subsequently mapped. The other relevant oceanographic feature examined are eddies and were also documented to significantly influence fisheries [55, 56]. Oceanic eddies within 160°E - 160°W and 30° - 50°N were detected from the daily altimetry-derived SSH data using the eddy detection routines [57] implemented in MATLAB R2014a. The detected eddies with lifespan ≥ 30 days were then classified into either warm core (anticyclonic) and cold core (cyclonic) eddies and the number of eddy centers within a 25 km pixel were summed up for each month from 1999 to 2010. The outermost spatial boundaries of the potential squid habitat hotspots (HPI = 0.25) were subsequently extracted and their contours were overlain on the spatial maps of chlorophyll-*a* with the TZCF position and eddy counts.

Results

Spatial patterns of squid aggregations and environmental variables

Fig 2A–2C shows the kernel density distributions of monthly-pooled squid fishing locations, corresponding to squid fishing effort from May to July, 1999–2010. In May (Fig 2A), squid fishing effort is primarily concentrated across 170°E - 170°W , where the highest density occurs west of the dateline (180° - 170°W). In June (Fig 2B), the squid fishing effort extended further west, generating a second density peak between 170°E and 160°W with the latitudinal distribution centroid (39.84°N) slightly shifting to the north. In July (Fig 2C), the squid fishing activities maintained their zonal extent and the fishing vessel density peaked across 180° - 170°W , while shifting the latitudinal distribution centroid (42.03°N) further north.

Fig 3A–3E shows the spatial maps of the 12-year long climatological mean for environmental variables used in the final monthly MaxEnt models from May to July (Table 2). Monthly SST (Fig 3A) spatial patterns showed warming signals that are likely driven by seasonal changes in insolation while the spatial patterns of SSH (Fig 3B) showed zonal expansion of the warm Kuroshio Current extension across 30 – 35°N from May to July. The spatial patterns of SSS (Fig 3C) showed the strongest freshening signals between 160°W - 180° and 40 – 50°N in May, which gradually weaken from June to July. This could potentially mirror the seasonal variability in the strength of Oyashio intrusion and transport, generally exhibiting maximum in winter-spring [58]. MLD spatial maps (Fig 3D) further showed shoaling patterns from May to July with deepest MLD in the subarctic region (40 – 50°N). This response could be driven by seasonal relaxation of wind patterns in the North Pacific [59]. Finally, the spatial patterns of the zonal geostrophic current component (*u*) from May to July, also revealed predominantly eastward flow, with highest magnitude observed along the path of the Kuroshio Current extension between 160°E - 180° and 30 – 40°N .

MaxEnt model environmental variable selection

Table 2 shows the relative variable contribution of the initial pool of environmental predictors used to develop the monthly MaxEnt habitat models. These preliminary results revealed that SST and SSH showed constantly high variable importance (78–96%) to squid habitats in May, June and July. However, the environmental variables that ranked after SST and SSH across the monthly models varied on their relative model contributions. In May, for instance, MLD (9.1%) ranked as the third important variable while in June and July, it was geostrophic_*u* (2.1%) and SSS (19.8%), respectively. The final monthly models corresponded to the most parsimonious habitat models, using the top 3 environmental factors (accounting for 95–98% of the predicted spatial squid habitat patterns) that significantly influenced the squid potential habitat in central Pacific. Fig 4A–4C showed the derived response curves from the final

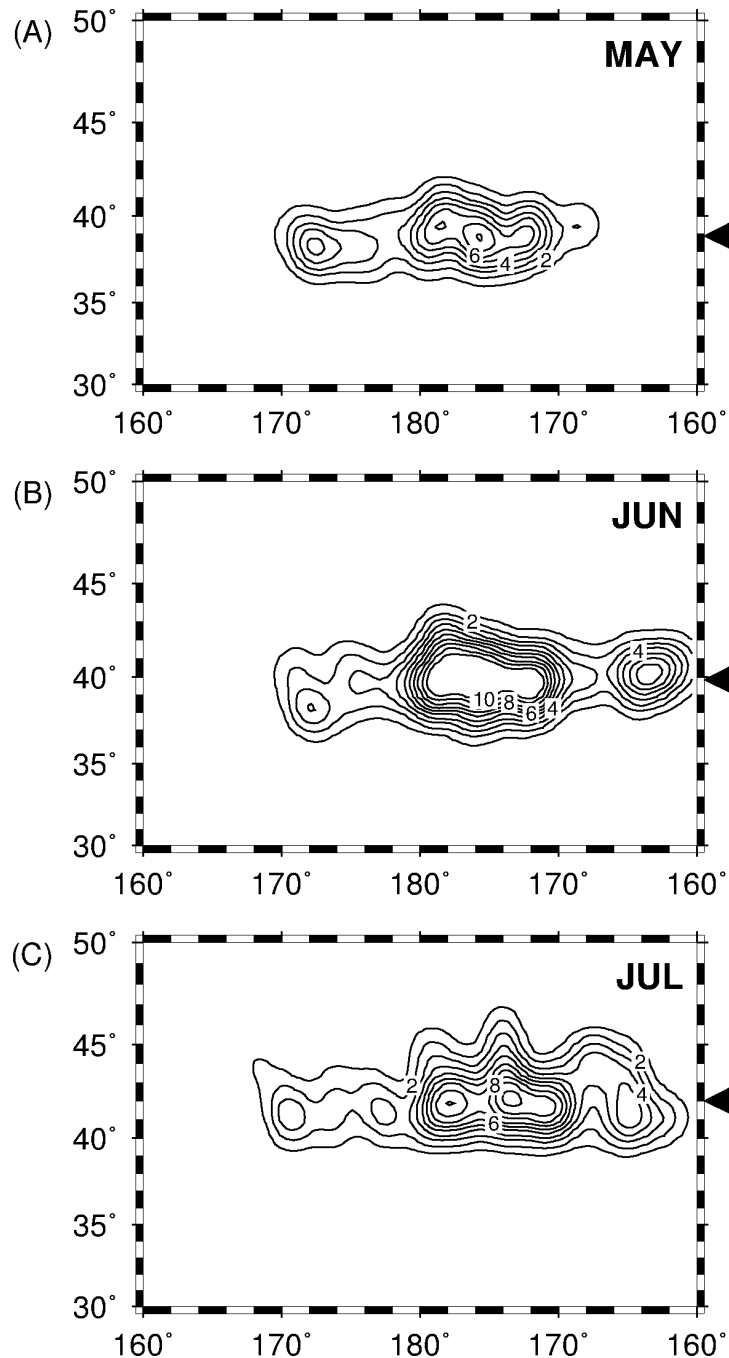


Fig 2. Kernel density distribution of squid fishing locations (representing squid fishing effort) for (A) May, (B) June and (C) July 1999–2011. Japanese summer squid fishing activities are mainly concentrated west of 180°. Latitudinal distribution centroids are shown by the triangles on the right.

doi:10.1371/journal.pone.0142885.g002

3-parameter monthly models. In May (Fig 4A), the squid potential habitat was defined by the SST, SSH and MLD ranges from 10–16°C, 40–90 cm and 0–300 m, respectively. The elevated MLDs showed positive effect on the squid habitat during this period. In June (Fig 4B), SST and SSH covered wider ranges, with SSH extending into colder regions. During this month, the

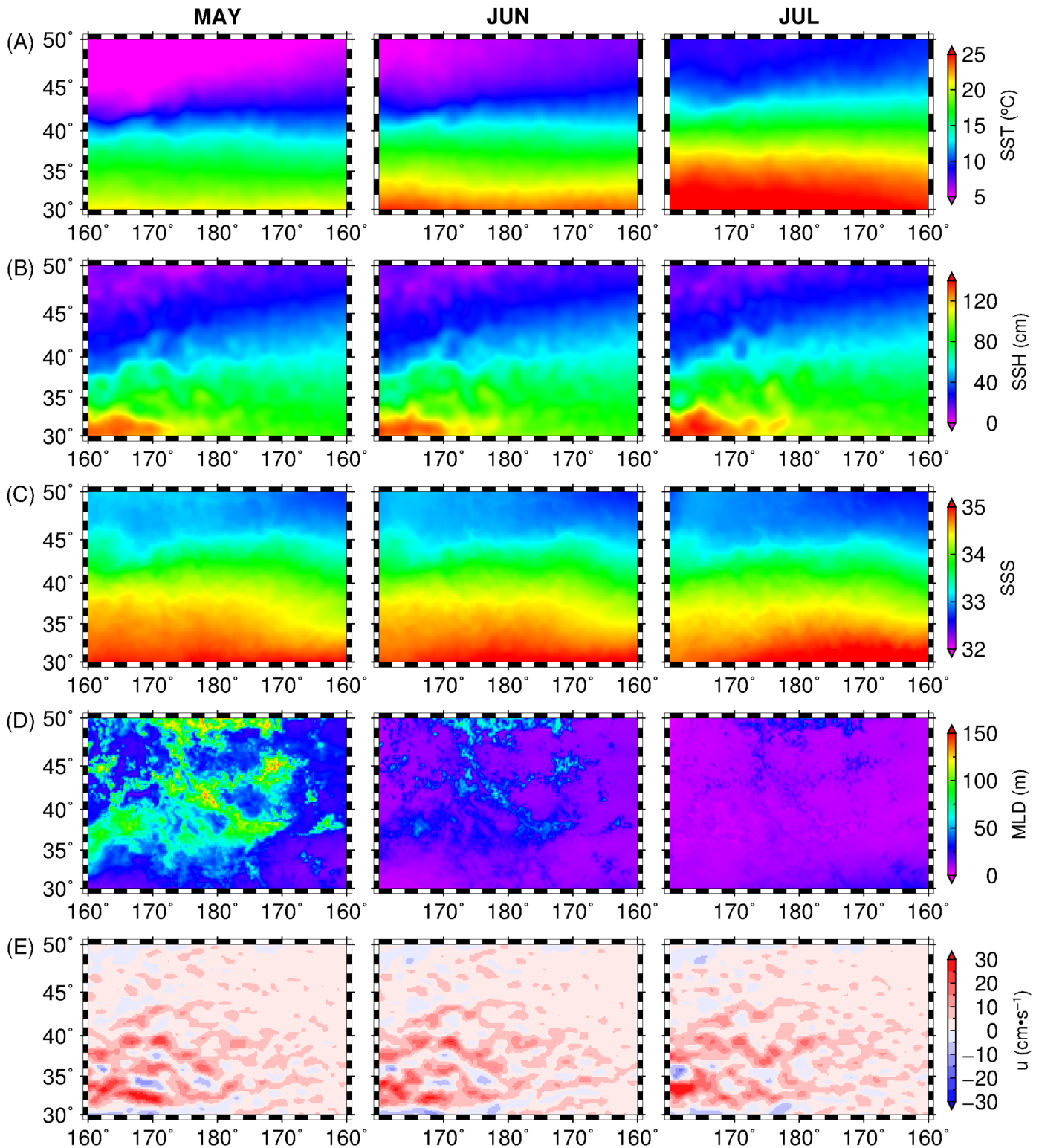


Fig 3. Spatial maps of the environmental variables used for the final monthly MaxEnt models represented by (A) SST, (B) SSH, (C) SSS, (D) MLD and (E) u averaged from 1999 to 2010 across the study area.

doi:10.1371/journal.pone.0142885.g003

Table 2. The relative model contribution of the environmental parameters used for initial habitat model construction for May, June and July, 1999–2010.

Environmental variables	Percent Contribution		
	May	June	July
SST	61.3	70.6	58.2
SSS	2.7	0.3	16.7
SSH	24.0	24.9	19.8
EKE	0.6	0.2	0.5
geostrophic_u	0.1	2.1	0
geostrophic_v	0.0	0.2	1
MLD	9.3	0.8	2.7
NPP	1.3	0.2	0.3
Chl-a	0.1	0.7	0.2
∇depth	0.6	0.1	0.4

Bold values correspond to the contributions of the 3 most important variables for final model development.

doi:10.1371/journal.pone.0142885.t002

squid potential habitat was also defined by relatively strong eastward flow ($-25-75 \text{ cm}\cdot\text{s}^{-1}$). In July (Fig 4C), squid potential habitat was characterized by SST, SSH and SSS with ranges between 10–20°C, 20–80 cm and 32.5–34.1, respectively.

Spatial patterns of squid habitat and prediction uncertainty

Fig 5A–5C showed the monthly-averaged predicted squid habitats with their corresponding uncertainty maps (standard deviation) from 1999 to 2010. The spatial patterns between monthly predictions exhibit differences such that squid potential habitat increased in spatial extent and magnitude, with decreased in prediction uncertainties from May to July. In May (Fig 5A, left panel), squid potential habitats were found between 36–41°N with interspersed patches of high suitable regions ($\text{HSI} \geq 0.5$) that are further defined by high prediction uncertainty (high SD; Fig 5A, right panel). Prediction uncertainty levels show as to whether the predicted habitat is stable or not over the 12-year period and hence, highlight the transient nature of squid potential habitats in May. In June (Fig 5B, left panel), squid potential habitat formed between 37–44°N, with high suitable areas west of the dateline, further defined with low corresponding SD (right panel). As the summer season progresses, the squid potential habitat in July (Fig 5C, left panel) shifted north between 38–47°N, with high suitable areas expanding from 180° to 160°W. East of 180°, however, patches of high suitable areas were less evident for June and July and spatial patterns of associated habitat uncertainty in these regions were correspondingly higher relative to the western regions (180°–160°W).

Spatial patterns of temporal overlap of squid habitat

The spatial distributions of the temporal overlap of squid habitat from May to July, 1999–2010 are shown in Fig 6A–6C and HSI thresholds used for the computation are shown in Table 3. In May, the squid potential habitat hotspots were generally patchy, with distribution between 170°E–160°W. The biggest squid hotspot patch for this period also developed between 176°W–169°W and 37–39°N. In June, squid habitat hotspots were concentrated between 174°W–160°W with a slight meridional shift between 39–40°N. In July, squid habitat hotspots further expanded north (40–44°N) covering the widest spatial extent relative to the other months

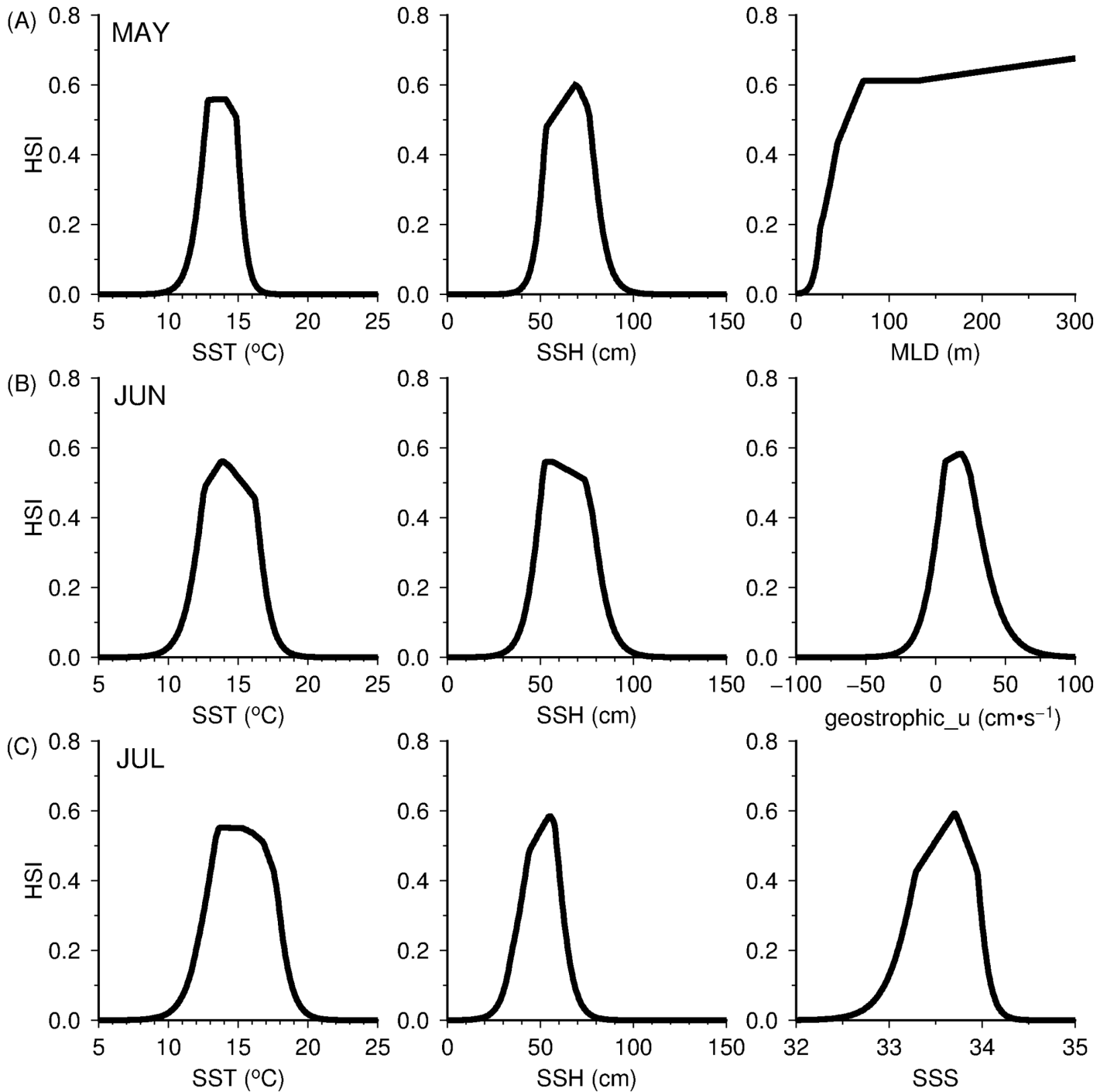


Fig 4. Response curves for the final environmental variables used for (A) May, (B) June and (C) July MaxEnt models.

doi:10.1371/journal.pone.0142885.g004

(176°E-160°W). The regions west of the dateline (160°E-180°), however, showed low HPI across all the months, with the widest spatial extent during May, when squid habitats were mainly located in the south (37–40°N) relative to other months.

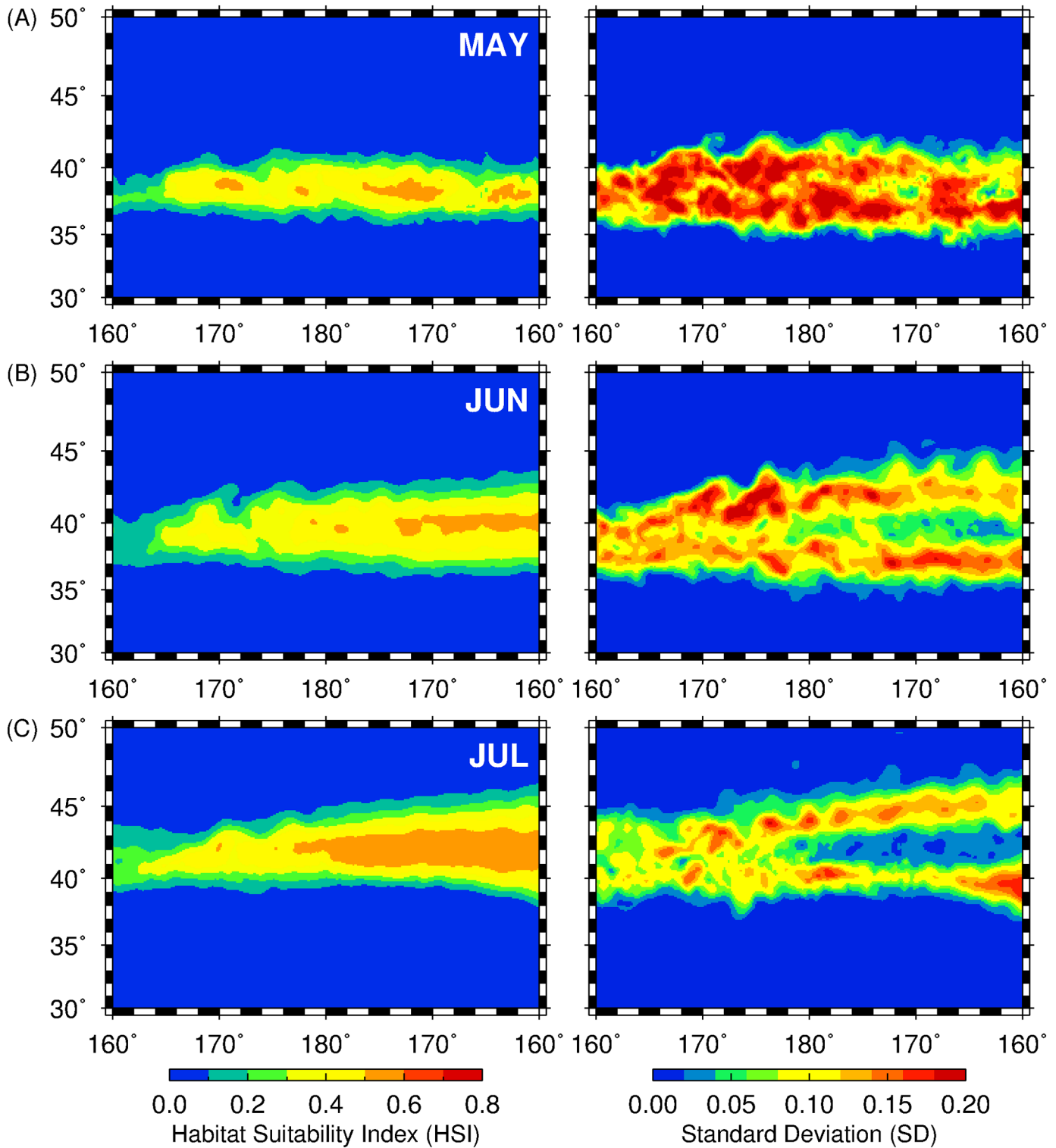


Fig 5. Spatial HSI (left panel) and standard deviation maps (right panel) averaged from 1999 to 2011 for (A) May, (B) June and (C) July.

doi:10.1371/journal.pone.0142885.g005

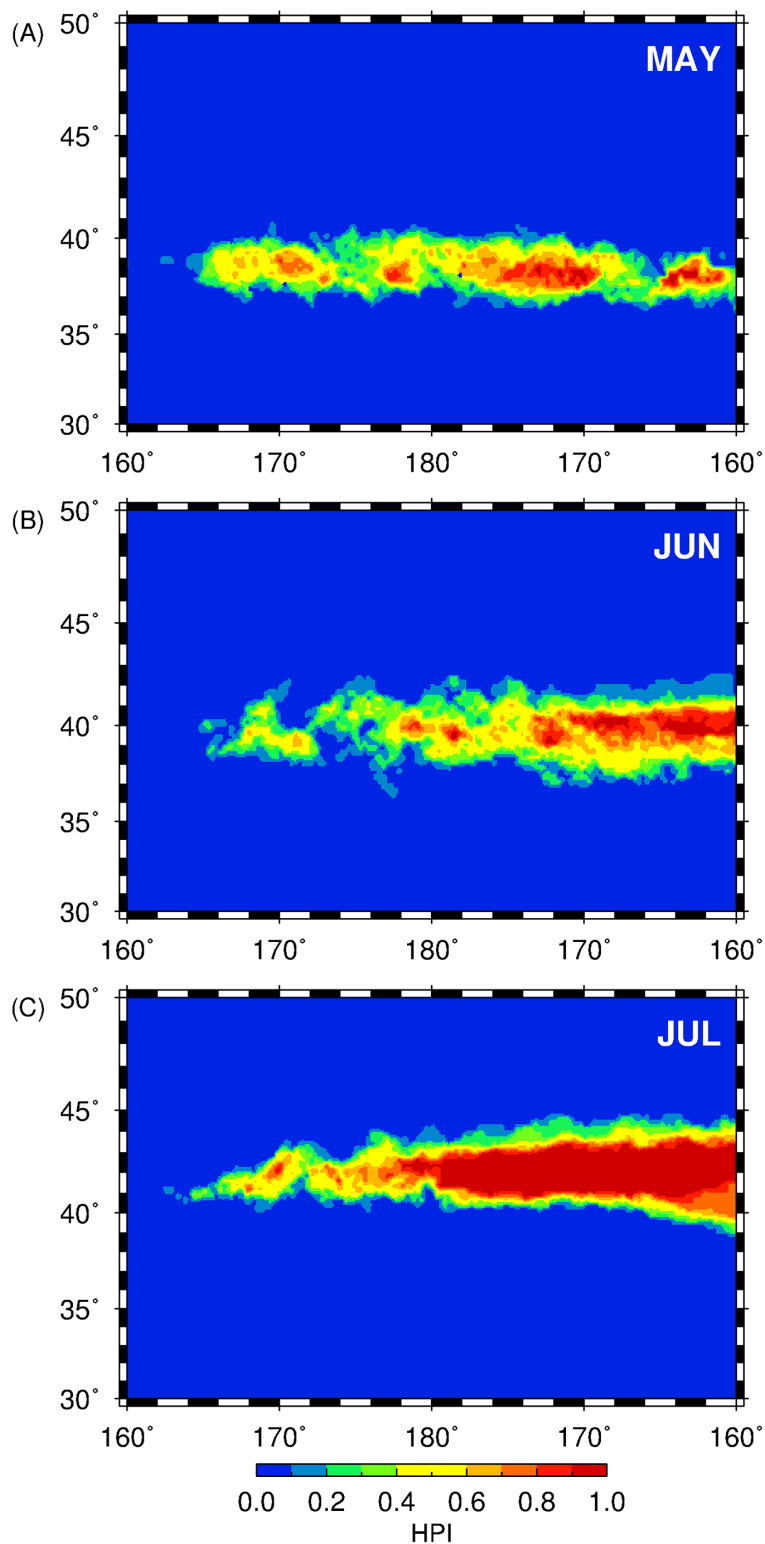


Fig 6. Spatial maps of HPI for (A) May, (B) June and (C) July 1999–2011. HSI thresholds used for binary classification were derived using the 25th percentile of the HSI extracted at the actual fishing locations for May, June and July, 1999–2010.

doi:10.1371/journal.pone.0142885.g006

Table 3. Interquartile range of HSI distribution from the monthly-pooled actual squid fishing locations from May to July, 1999–2010.

MaxEnt models	Habitat Suitability Index (HSI) Quantiles				
	0%	25%	50%	75%	100%
May	0.04	0.48	0.54	0.59	0.65
June	0.01	0.47	0.53	0.56	0.65
July	0.06	0.47	0.54	0.57	0.62

The monthly 25th HSI percentiles were used as thresholds for the binary classification of monthly squid habitat predictions to derive temporal habitat overlap as an index of habitat persistence (HPI).

doi:10.1371/journal.pone.0142885.t003

Squid habitat hotspots in relation to oceanographic features

The outermost boundaries of the monthly squid habitat hotspots (HPI = 0.25, corresponding to a temporal habitat overlap of 3 years) overlain on the climatological averages of chlorophyll-*a* and contours representing the monthly position of the TZCF are shown in Fig 7A–7C.

Despite of the small variable contribution of chlorophyll-*a* to the initial MaxEnt models for predicting squid habitat, the identified squid habitat hotspots from May to July, 1999–2010 corresponded well with the regions of high primary productivity and that the southern boundary of the squid habitat hotspots east of the dateline (180°–160°W) were found close to the climatological mean position of the TZCF especially during the months of June and July. These results suggest that the TZCF could likely influence the foraging conditions of the neon flying squid in summer and consequently impact the persistence of its suitable habitat.

Further analyses of the spatial and temporal distributions of oceanic eddies in the central North Pacific revealed the eddy-rich zones dominated by warm and cold-core eddies, between (1) 160°E–160°W and 30–40°N and (2) 160°E–180° and 30–50°N (Fig 8A–8C) which also follow the zonal gradients of Kuroshio and Oyashio western boundary flows. In May, the squid habitat hotspots distribution were mainly located within the first region while from June and July the possible associations of squid habitat hotspots to the eddy features east of 180° is likely reduced as the squid habitat pattern shifted northeast. However, in regions west of the dateline (160°E–180°) corresponding to the zonal extent of Kuroshio extension, the presence of warm- and cold-core eddies could still potentially influence the dynamics of the squid habitat hotspots.

Discussion

We have explored and identified the pelagic squid potential habitat hotspots in the central North Pacific by combining available environmental variables and fishery information as input to the MaxEnt habitat models. The spatial and temporal patterns of these biological features were also determined based on the 2 criteria: (1) high habitat suitability and (2) persistence of the highly suitable habitat for neon flying squid over time. Within the 12-year period, the squid potential habitat hotspots showed differences in spatial patterns from May to July and we proposed that these variations are likely due to the dynamics of oceanographic features to which, the squids are associated with, during the course of their northward feeding migration off the central North Pacific from late spring to summer. For instance, in May when the squids primarily feed within the Kuroshio-Oyashio transition zone (KOTZ), the squid habitat hotspots were comprised of small patches of persistent suitable habitats (Figs 5A and 6A) relative to

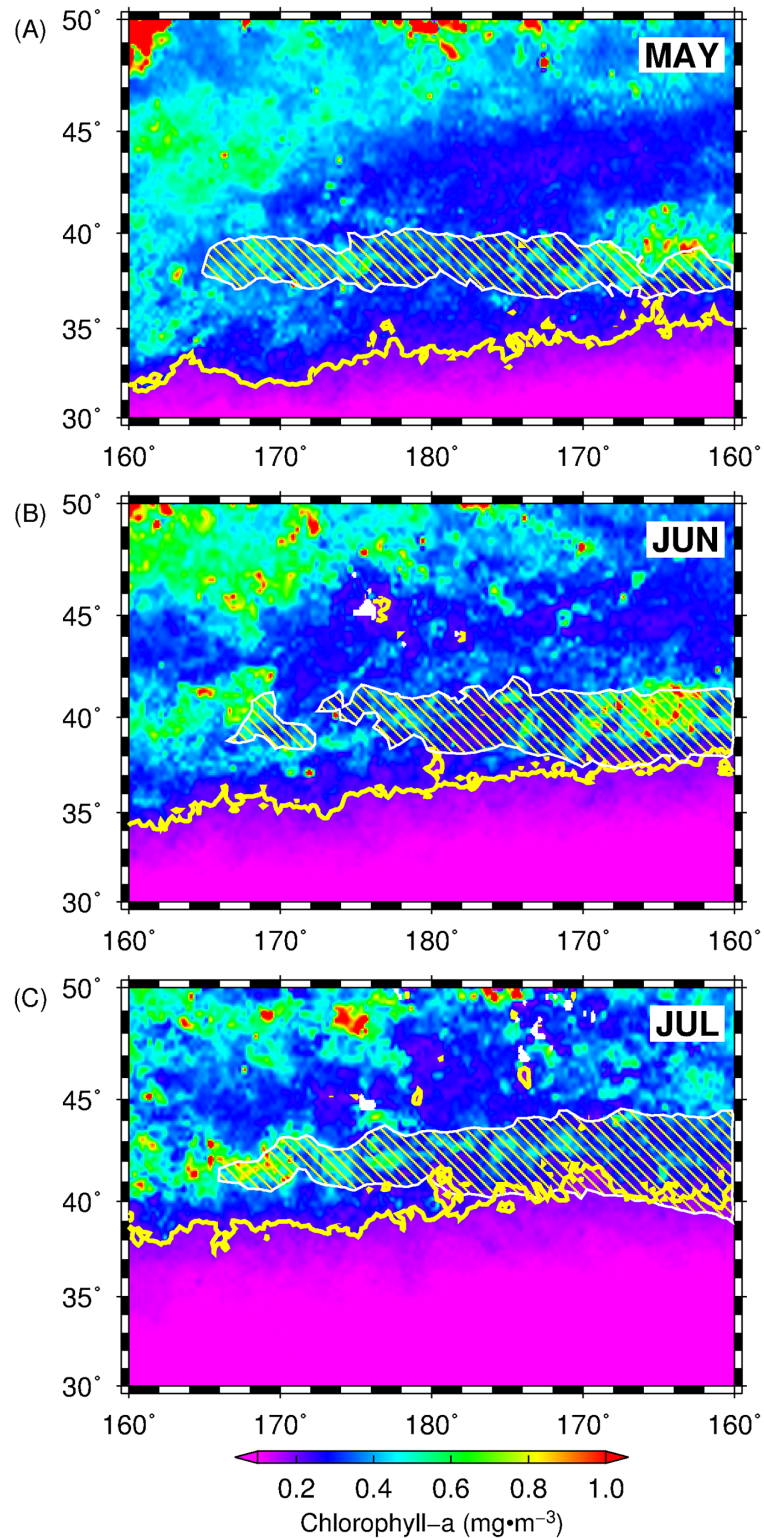


Fig 7. Maps of climatological averages of chlorophyll-a and location of the TZCF ($0.2 \text{ mg}/\text{m}^2$ of chlorophyll-a; yellow solid lines) from (A) May, (B) June and (C) July, 1999 to 2010. White polygon corresponds to the outermost boundaries of squid habitat with temporal overlap of 3 years (HPI = 0.25).

doi:10.1371/journal.pone.0142885.g007

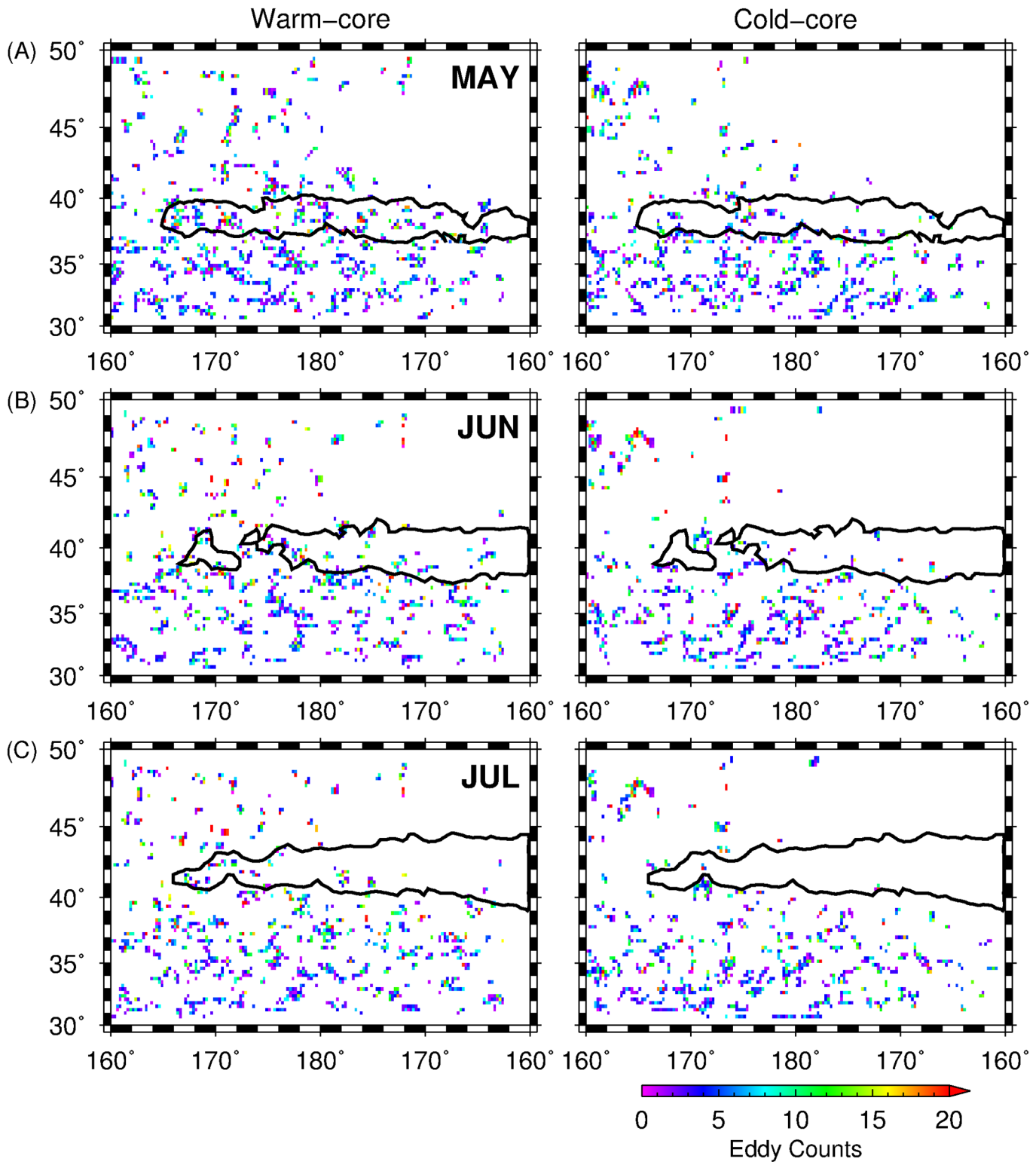


Fig 8. Spatial map of pixel-wise counts of warm-core (left panel) and cold-core (right panel) eddy for (A) May, (B) June and (C) July, 1999 to 2010. Black polygon corresponds to the outermost boundaries of squid habitat with temporal overlap of 3 years (HPI = 0.25).

doi:10.1371/journal.pone.0142885.g008

June and July. The KOTZ (140°E-160°W, 35°-40°N) is a highly dynamic oceanographic region where both warm and cold-core eddies are distributed [60, 61]. The distribution of these eddies along this zone resulted to the local enhancement of primary productivity that provide favorable foraging opportunities for pelagic species [39, 62]. In this study, the association of squid to the transient and dynamic oceanic eddies in the KOTZ (160°E-160°W; 30–40°N) could potentially account for the patchy distribution of squid habitat hotspots in May. Moreover, from June to July, an evident east-west gradient in squid habitat hotspots separated at 180°, where the western regions tended to have highly variable squid habitat (Fig 5B and 5C) and hotspots with relatively low HPI (Fig 6B and 6C), could also be potentially attributed to the association of squids to eddy features with geographic positions changing from year to year. Despite the presence of both warm- and cold-core eddies in the study area, squid habitat hotspots were also associated with the former as evident from higher number of warm-core eddies within and around the periphery of squid habitat hotspots (Fig 8A–8C). Warm-core eddies exhibit convergent flow and could aggregate prey species and create favorable foraging conditions for apex predators including squids [63, 64]. East of the dateline (180°), however, the spatial expansion of the squid potential habitat hotspots is likely from the association of squids to the seasonally-migrating, albeit quasi-permanent TZCF and consequent utilization of the productive waters of the subarctic (Fig 7A–7C). The TZCF is a sharp surface chlorophyll-*a* gradient that delineates the less productive subtropical waters with more productive subarctic waters in the north [65]. As the season transitioned from late spring (May) to mid-summer (July), squid habitat hotspots sit atop of and move closer to TZCF, presumably providing good foraging opportunities for neon flying squid (Fig 7A–7C). Polovina et al. [25] suggested that top pelagic predators track the TZCF during their northward feeding migration as this frontal feature may coincide with a convergent front along which, prey species for marine predators are accumulated. In this study, squids are also likely to track the position of the TZCF to optimize their feeding conditions in the central North Pacific by acting as a biophysical cue to maintain their foraging habitat well within a high productivity zone (Fig 7A–7C) throughout the summer season. This possibly accounted for the wider regions of predicted squid habitat hotspots west of the dateline from June and July.

In all the monthly models, squid habitat hotspots were largely influenced by SST such that the northern boundary of these regions are defined by temperature higher than 10°C (Fig 4A–4C). This result is in agreement with the findings of earlier studies reporting that distribution of neon flying squid occurs at zones above 10°C [17, 66]. The second most important variable influencing squid habitat was SSH and could be possibly related to the energetic mesoscale activity, as the central North Pacific appears to be an eddy-rich zone (Fig 8A–8C). While all the monthly habitat models highlighted the importance of SST and SSH to squid potential habitat, other environmental factors showed different amounts of model contribution from May to July, presumably reflecting differences in the physical oceanographic features associated with squid habitat. In May, for instance, deeper MLDs (Fig 4A, right panel) were found favorable to squid habitat in the nutrient-limited KOTZ, as this condition provide high nutrient flux to the surface, thereby supporting primary productivity [67]. In June, however, moderate to strong eastward geostrophic flow (Fig 4B, right panel) appeared favorable to the formation of squid potential habitat and possibly important for the accumulation of passive prey species through advective processes from the west to the central North Pacific [68, 69], where higher primary productivity rates and phytoplankton concentration are generally observed from late spring to early summer [70]. In July, as the squid potential habitat shifted further north towards the subarctic frontal zone (SAFZ), SSS (Table 2) showed a model variable contribution comparable to that of SSH. The SAFZ is generally characterized by presence of strong thermohaline fronts [71, 72] which could possibly explain the increase in the model variable contribution of SSS

during this period. These findings suggest that the relative model contribution of environmental parameters differ across space and time and these variations in turn, could further affect the dynamics of potential squid habitat hotspots.

Summary and Conclusion

The squid potential habitat hotspots in the central North Pacific were influenced by spatial and temporal oceanographic features during the seasonal transition from late spring to summer. The distribution patterns of the habitat hotspots from May to July also highlighted 2 distinct zonal and meridional gradients separated at 180° and 40°N, respectively: (1) 160°E-180°; 37–40°N and (2) 180°-160°W; 40–44°N. Region 1 corresponded to the highly variable habitat with lower persistence index relative to region 2 and their spatio-temporal characteristics are presumably driven by the oceanographic features to which, squids are likely to associate with during their feeding migration. The potential relevance of the oceanic eddies and TZCF to the dynamics of squid habitat hotspots in central North Pacific reinforces the fundamental idea that the physical processes leading to the formation and persistence of pelagic hotspots vary and operate through different spatial and temporal scales [5].

Supporting Information

S1 Fig. Frequency histogram and summary statistics of the squid catch per unit effort (CPUE) for each occurrence point used for habitat model construction from May to July 1999–2010.

(PDF)

Acknowledgments

This work was supported by the Research on Climate Change Adaptation (RECCA) Project of the Grant-in-Aid from Japan's Ministry of Education, Culture, Sports, Science and Technology (MEXT). The authors also acknowledge Aomori Prefectural Industrial Technology Research Center for providing the squid fishery data, NOAA coastwatch and OSU ocean productivity websites for the environmental data used in the analyses.

Author Contributions

Conceived and designed the experiments: IDA RM SS. Analyzed the data: IDA. Contributed reagents/materials/analysis tools: HI YI NU MK MS TA. Wrote the paper: IDA RM SS TA.

References

1. Etnoyer P, Canny D, Mate B, Morgan L. Persistent pelagic habitats in the Baja California to Bering Sea (B2B) ecoregion. *Oceanography*. 2004; 17(1):12.
2. Hormazabal S, Núñez S, Arcos D, Espindola F, Yuras G. Mesoscale eddies and pelagic fishery off central Chile (33–40°S). *Gayana (Concepción)*. 2004; 68:291–6.
3. Mugo RM, Saitoh S-I, Takahashi F, Nihira A, Kuroyama T. Evaluating the role of fronts in habitat overlaps between cold and warm water species in the western North Pacific: A proof of concept. *Deep Sea Research Part II: Topical Studies in Oceanography*. 2014; 107:29–39.
4. Palacios DM, Bograd SJ, Foley DG, Schwing FB. Oceanographic characteristics of biological hot spots in the North Pacific: A remote sensing perspective. *Deep Sea Research Part II: Topical Studies in Oceanography*. 2006; 53(3–4):250–69.
5. Marchese C. Biodiversity hotspots: A shortcut for a more complicated concept. *Global Ecology and Conservation*. 2015; 3(0):297–309.

6. Nur N, Jahncke J, Herzog MP, Howar J, Hyrenbach KD, Zamon JE, et al. Where the wild things are: predicting hotspots of seabird aggregations in the California Current System. *Ecological Applications*. 2011; 21(6):2241–57. PMID: [21939058](#)
7. Selig ER, Turner WR, Troëng S, Wallace BP, Halpern BS, Kaschner K, et al. Global Priorities for Marine Biodiversity Conservation. *PLoS ONE*. 2014; 9(1):e82898. doi: [10.1371/journal.pone.0082898](#) PMID: [24416151](#)
8. Morato T, Hoyle SD, Allain V, Nicol SJ. Seamounts are hotspots of pelagic biodiversity in the open ocean. *Proceedings of the National Academy of Sciences*. 2010; 107(21):9707–11.
9. Roper CFE, Sweeney M, Nauen C. Cephalopods of the world. An annotated and illustrated catalogue of species of interest to fisheries. *FAO Fish Synop* 125, Rome. 1984; 3:1–277.
10. FAO. Myopsid and Oegopsid Squids. In: Jereb P, Roper CFE, editors. *Cephalopods of the world An annotated and illustrated catalogue of cephalopod species known to date*. 2. Rome2010. p. 1–605.
11. Yatsu A, Watanabe T, Mori J, Nagasawa K, Ishida Y, Meguro T, et al. Interannual variability in stock abundance of the neon flying squid, *Ommastrephes bartramii*, in the North Pacific Ocean during 1979–1998: impact of driftnet fishing and oceanographic conditions. *Fisheries Oceanography*. 2000; 9(2):163–70.
12. Bower JR, Ichii T. The red flying squid (*Ommastrephes bartramii*): A review of recent research and the fishery in Japan. *Fisheries Research*. 2005; 76(1):39–55.
13. Watanabe H, Kubodera T, Ichii T, Kawahara S. Feeding habits of neon flying squid *Ommastrephes bartramii* in the transitional region of the central North Pacific. *Marine Ecology Progress Series*. 2004; 266:173–84.
14. Watanabe H, Kubodera T, Ichii T, Sakai M, Moku M, Seitou M. Diet and sexual maturation of the neon flying squid *Ommastrephes bartramii* during autumn and spring in the Kuroshio–Oyashio transition region. *Journal of the Marine Biological Association of the United Kingdom*. 2008; 88(02):381–9.
15. Seki MP. The role of neon flying squid, *Ommastrephes bartramii*, in the North Pacific pelagic food web. *Bull Int Natl N Pac Comm*. 1993; 53:207–15.
16. Mori J, Kubodera T, Baba N. Squid in the diet of northern fur seals, *Callorhinus ursinus*, caught in the western and central North Pacific Ocean. *Fisheries Research*. 2001; 52(1–2):91–7.
17. Ichii T, Mahapatra K, Sakai M, Okada Y. Life history of the neon flying squid: effect of the oceanographic regime in the North Pacific Ocean. *Marine Ecology Progress Series*. 2009; 378:1–11.
18. Nishikawa H, Igarashi H, Ishikawa Y, Sakai M, Kato Y, Ebina M, et al. Impact of paralarvae and juveniles feeding environment on the neon flying squid (*Ommastrephes bartramii*) winter–spring cohort stock. *Fisheries Oceanography*. 2014; 23(4):289–303.
19. Igarashi H, Ichii T, Sakai M, Ishikawa Y, Toyoda T, Masuda S, et al. Possible link between interannual variation of neon flying squid (*Ommastrephes bartramii*) abundance in the North Pacific and the climate phase shift in 1998/1999. *Progress in Oceanography*. 2015(0:).
20. Yu W, Chen X, Yi Q, Chen Y, Zhang Y. Variability of Suitable Habitat of Western Winter-Spring Cohort for Neon Flying Squid in the Northwest Pacific under Anomalous Environments. *PLoS ONE*. 2015; 10(4):e0122997. doi: [10.1371/journal.pone.0122997](#) PMID: [25923519](#)
21. Shao QQ, Ma WW, Chen ZQ, You ZM, Wang WY. Relationship between Kuroshio meander pattern and *Ommastrephes bartramii* CPUE in northwest Pacific Ocean. *Oceanol Limnol Sin*. 2005; 5:111–22.
22. Watanabe H, Kubodera T, Moku M, Kawaguchi K. Diel vertical migration of squid in the warm core ring and cold water masses in the transition region of the western North Pacific. *Marine Ecology Progress Series*. 2006; 315:187–97.
23. Ichii T, Mahapatra K, Sakai M, Inagake D, Okada Y. Differing body size between the autumn and the winter–spring cohorts of neon flying squid (*Ommastrephes bartramii*) related to the oceanographic regime in the North Pacific: a hypothesis. *Fisheries Oceanography*. 2004; 13(5):295–309.
24. Kato Y, Sakai M, Mmasujima M, Okazaki M, Igarashi H, Masuda S, et al. Effects of hydrographic conditions on the transport of neon flying squid *Ommastrephes bartramii* larvae in the North Pacific Ocean. *Hidrobiológica*. 2014; 24:33–8.
25. Polovina JJ, Howell E, Kobayashi DR, Seki MP. The transition zone chlorophyll front, a dynamic global feature defining migration and forage habitat for marine resources. *Progress in Oceanography*. 2001; 49(1–4):469–83.
26. Guisan A, Thuiller W. Predicting species distribution: offering more than simple habitat models. *Ecology Letters*. 2005; 8(9):993–1009.
27. Guisan A, Zimmermann NE. Predictive habitat distribution models in ecology. *Ecological Modelling*. 2000; 135(2–3):147–86.

28. Elith J, Leathwick JR. Species distribution models: ecological explanation and prediction across space and time. *Annual Review of Ecology, Evolution, and Systematics*. 2009; 40:677–97.
29. Rose GA. On distributional responses of North Atlantic fish to climate change. *ICES Journal of Marine Science: Journal du Conseil*. 2005; 62(7):1360–74.
30. Worm B, Sandow M, Oschlies A, Lotze HK, Myers RA. Global Patterns of Predator Diversity in the Open Oceans. *Science*. 2005; 309(5739):1365–9. PMID: [16051749](#)
31. McKinney J, Hoffmayer E, Wu W, Fulford R, Hendon J. Feeding habitat of the whale shark *Rhincodon typus* in the northern Gulf of Mexico determined using species distribution modelling. *Marine Ecology Progress Series*. 2012; 458:199–211.
32. Alabía ID, Saitoh S-I, Mugo R, Igarashi H, Ishikawa Y, Usui N, et al. Seasonal potential fishing ground prediction of neon flying squid (*Ommastrephes bartramii*) in the western and central North Pacific. *Fisheries Oceanography*. 2015; 24(2):190–203.
33. Phillips SJ, Anderson RP, Schapire RE. Maximum entropy modeling of species geographic distributions. *Ecological Modelling*. 2006; 190(3–4):231–59.
34. Chavanne CP, Klein P. Can oceanic submesoscale processes be observed with satellite altimetry? *Geophysical Research Letters*. 2010; 37(22):L22602.
35. Usui N, Ishizaki S, Fujii Y, Tsujino H, Yasuda T, Kamachi M. Meteorological Research Institute multivariate ocean variational estimation (MOVE) system: Some early results. *Advances in Space Research*. 2006; 37(4):806–22.
36. Amante C, Eakins BW. ETOPO1 1 Arc-Minute Global Relief Model: Procedures, Data Sources and Analysis. NOAA Technical Memorandum NESDIS NGDC-24 National Geophysical Data Center, NOAA. 2009.
37. VanDerWal J, Falconi L, Januchowski S, Shoo L, Storlie C. SDMTTools: Species Distribution Modelling Tools: Tools for processing data associated with species distribution modelling exercises. R package version 11–221. 2014.
38. Andrade HA. The relationship between the skipjack tuna (*Katsuwonus pelamis*) fishery and seasonal temperature variability in the south-western Atlantic. *Fisheries Oceanography*. 2003; 12(1):10–8.
39. Zainuddin M, Kiyofuji H, Saitoh K, Saitoh S-I. Using multi-sensor satellite remote sensing and catch data to detect ocean hot spots for albacore (*Thunnus alalunga*) in the northwestern North Pacific. *Deep Sea Research Part II: Topical Studies in Oceanography*. 2006; 53(3–4):419–31.
40. Chen X, Tian S, Chen Y, Liu B. A modeling approach to identify optimal habitat and suitable fishing grounds for neon flying squid (*Ommastrephes bartramii*) in the Northwest Pacific Ocean. *Fishery Bulletin*. 2010; 108(1):14.
41. Tian S, Chen X, Chen Y, Xu L, Dai X. Evaluating habitat suitability indices derived from CPUE and fishing effort data for *Ommastrephes bartramii* in the northwestern Pacific Ocean. *Fisheries Research*. 2009; 95(2–3):181–8.
42. Abrahams MV, Healey MC. Some consequences of variation in vessel density: a manipulative field experiment. *Fisheries Research*. 1993; 15(4):315–22.
43. Swain DP, Wade EJ. Spatial distribution of catch and effort in a fishery for snow crab (*Chionoecetes opilio*): tests of predictions of the ideal free distribution. *Canadian Journal of Fisheries and Aquatic Sciences*. 2003; 60(8):897–909.
44. Rijnsdorp AD, Dol W, Hoyer M, Pastoors MA. Effects of fishing power and competitive interactions among vessels on the effort allocation on the trip level of the Dutch beam trawl fleet. *ICES Journal of Marine Science*. 2000; 57(4):927–37.
45. Rupprecht F, Oldeland J, Finckh M. Modelling potential distribution of the threatened tree species *Juniperus oxycedrus*: how to evaluate the predictions of different modelling approaches? *Journal of Vegetation Science*. 2011; 22(4):647–59.
46. Tarjuelo R, Morales MB, Traba J, Delgado MP. Are Species Coexistence Areas a Good Option for Conservation Management? Applications from Fine Scale Modelling in Two Steppe Birds. *PLoS ONE*. 2014; 9(1):e87847. doi: [10.1371/journal.pone.0087847](#) PMID: [24498210](#)
47. Jones MC, Dye SR, Pinnegar JK, Warren R, Cheung WWL. Modelling commercial fish distributions: Prediction and assessment using different approaches. *Ecological Modelling*. 2012; 225(0):133–45.
48. Bécares J, García-Tarrasón M, Villero D, Bateman S, Jover L, García-Matarranz V, et al. Modelling Terrestrial and Marine Foraging Habitats in Breeding Audouin's Gulls *Larus audouinii*: Timing Matters. *PLoS ONE*. 2015; 10(4):e0120799. doi: [10.1371/journal.pone.0120799](#) PMID: [25875597](#)
49. Swets JA. Measuring the Accuracy of Diagnostic Systems. *Science*. 1988; 240(4857):1285–93. PMID: [3287615](#)

50. Thiers L, Louzao M, Ridoux V, Le Corre M, Jaquemet S, Weimerskirch H. Combining Methods to Describe Important Marine Habitats for Top Predators: Application to Identify Biological Hotspots in Tropical Waters. *PLoS ONE*. 2014; 9(12):e115057. doi: [10.1371/journal.pone.0115057](https://doi.org/10.1371/journal.pone.0115057) PMID: [25494047](https://pubmed.ncbi.nlm.nih.gov/25494047/)
51. Polovina JJ, Balazs GH, Howell EA, Parker DM, Seki MP, Dutton PH. Forage and migration habitat of loggerhead (*Caretta caretta*) and olive ridley (*Lepidochelys olivacea*) sea turtles in the central North Pacific Ocean. *Fisheries Oceanography*. 2004; 13(1):36–51.
52. Seki MP, Lumpkin R, Flament P. Hawaii Cyclonic Eddies and Blue Marlin Catches: The Case Study of the 1995 Hawaiian International Billfish Tournament. *Journal of Oceanography*. 2002; 58(5):739–45.
53. Zainuddin M, Saitoh K, Saitoh S-I. Albacore (*Thunnus alalunga*) fishing ground in relation to oceanographic conditions in the western North Pacific Ocean using remotely sensed satellite data. *Fisheries Oceanography*. 2008; 17(2):61–73.
54. Ichii T, Mahapatra K, Sakai M, Wakabayashi T, Okamura H, Igarashi H, et al. Changes in abundance of the neon flying squid *Ommastrephes bartramii* in relation to climate change in the central North Pacific Ocean. *Marine Ecology Progress Series*. 2011; 441:151–64.
55. Logerwell EA, Lavaniegos B, Smith PE. Spatially-explicit bioenergetics of Pacific sardine in the Southern California Bight: are mesoscale eddies areas of exceptional prerecruit production? *Progress in Oceanography*. 2001; 49(1–4):391–406.
56. Godø OR, Samuelson A, Macaulay GJ, Patel R, Hjøllø SS, Home J, et al. Mesoscale Eddies Are Oases for Higher Trophic Marine Life. *PLoS ONE*. 2012; 7(1):e30161. doi: [10.1371/journal.pone.0030161](https://doi.org/10.1371/journal.pone.0030161) PMID: [22272294](https://pubmed.ncbi.nlm.nih.gov/22272294/)
57. Halo I, Backeberg B, Penven P, Ansoorge I, Reason C, Ullgren JE. Eddy properties in the Mozambique Channel: A comparison between observations and two numerical ocean circulation models. *Deep Sea Research Part II: Topical Studies in Oceanography*. 2014; 100(0):38–53.
58. Sekine Y. Anomalous southward intrusion of the Oyashio east of Japan: 1. Influence of the seasonal and interannual variations in the wind stress over the North Pacific. *Journal of Geophysical Research: Oceans*. 1988; 93(C3):2247–55.
59. Sandwell DT, Agreen RW. Seasonal variation in wind speed and sea state from global satellite measurements. *Journal of Geophysical Research: Oceans*. 1984; 89(C2):2041–51.
60. Itoh S, Yasuda I. Water Mass Structure of Warm and Cold Anticyclonic Eddies in the Western Boundary Region of the Subarctic North Pacific. *Journal of Physical Oceanography*. 2010; 40(12):2624–42.
61. Yasuda I. Hydrographic Structure and Variability in the Kuroshio-Oyashio Transition Area. *Journal of Oceanography*. 2003; 59(4):389–402.
62. Polovina J, Uchida I, Balazs G, Howell EA, Parker D, Dutton P. The Kuroshio Extension Bifurcation Region: A pelagic hotspot for juvenile loggerhead sea turtles. *Deep Sea Research Part II: Topical Studies in Oceanography*. 2006; 53(3–4):326–39.
63. Young JW, Bradford R, Lamb TD, Clementson LA, Kloser R, Galea H. Yellowfin tuna *Thunnus albacares* aggregations along the shelf break off south-eastern Australia: links between inshore and offshore processes. *Marine and Freshwater Research*. 2001; 52(4):463–74.
64. Boyle P, Rodhouse P. *Cephalopods: Ecology and Fisheries*: Wiley; 2005.
65. Ayers JM, Lozier MS. Physical controls on the seasonal migration of the North Pacific transition zone chlorophyll front. *Journal of Geophysical Research: Oceans*. 2010; 115(C5):1–11.
66. Ichii T, Mahapatra K, Okamura H, Okada Y. Stock assessment of the autumn cohort of neon flying squid (*Ommastrephes bartramii*) in the North Pacific based on past large-scale high seas driftnet fishery data. *Fisheries Research*. 2006; 78(2–3):286–97.
67. Polovina JJ, Mitchum GT, Evans GT. Decadal and basin-scale variation in mixed layer depth and the impact on biological production in the Central and North Pacific, 1960–88. *Deep Sea Research Part I: Oceanographic Research Papers*. 1995; 42(10):1701–16.
68. Sassa C, Kawaguchi K, Oozeki Y, Kubota H, Sugisaki H. Distribution patterns of larval myctophid fishes in the transition region of the western North Pacific. *Marine Biology*. 2004; 144(3):417–28.
69. Yatsu A, Chiba S, Yamanaka Y, Ito S-i, Shimizu Y, Kaeriyama M, et al. Climate forcing and the Kuroshio/Oyashio ecosystem. *ICES Journal of Marine Science*. 2013.
70. Shiomoto A, Hashimoto S. Comparison of east and west chlorophyll a standing stock and oceanic habitat along the Transition Domain of the North Pacific. *Journal of Plankton Research*. 2000; 22(1):1–14.
71. Roden GI. Temperature and salinity fronts at the boundaries of the subarctic-subtropical transition zone in the western Pacific. *Journal of Geophysical Research*. 1972; 77(36):7175–87.
72. Yuan X, Talley LD. The subarctic frontal zone in the North Pacific: Characteristics of frontal structure from climatological data and synoptic surveys. *Journal of Geophysical Research: Oceans*. 1996; 101(C7):16491–508.