

Title	Do soybeans select specific species of Bradyrhizobium during growth?
Author(s)	Sugiyama, Akifumi; Ueda, Yoshikatsu; Takase, Hisabumi; Yazaki, Kazufumi
Citation	Communicative & Integrative Biology (2015), 8(1)
Issue Date	2015-03-04
URL	<a href="http://hdl.handle.net/2433/198823">http://hdl.handle.net/2433/198823</a>
Right	<p>© 2015 The Author(s). Published with license by Taylor &amp; Francis Group, LLCNone; This is an Open Access article distributed under the terms of the Creative Commons Attribution-NonCommercial License (<a href="http://creativecommons.org/licenses/by-nc/4.0/">http://creativecommons.org/licenses/by-nc/4.0/</a>), which permits unrestricted non-commercial use, distribution, and reproduction in any medium, provided the original work is properly cited.</p> <p>Permission is granted subject to the terms of the License under which the work was published. Please check the License conditions for the work which you wish to reuse. Full and appropriate attribution must be given. This permission does not cover any third party copyrighted material which may appear in the work requested.</p>
Type	Journal Article
Textversion	publisher

This article was downloaded by: [USACO]

On: 26 July 2015, At: 18:23

Publisher: Taylor & Francis

Informa Ltd Registered in England and Wales Registered Number: 1072954 Registered office: 5 Howick Place, London, SW1P 1WG



## Communicative & Integrative Biology

Publication details, including instructions for authors and subscription information:

<http://www.tandfonline.com/loi/kcib20>

### Do soybeans select specific species of Bradyrhizobium during growth?

Akifumi Sugiyama<sup>a</sup>, Yoshikatsu Ueda<sup>a</sup>, Hisabumi Takase<sup>b</sup> & Kazufumi Yazaki<sup>a</sup>

<sup>a</sup> Research Institute for Sustainable Humanosphere; Kyoto University; Kyoto, Japan

<sup>b</sup> Faculty of Bioenvironmental Science; Kyoto Gakuen University; Kyoto, Japan

Accepted author version posted online: 04 Mar 2015.



[Click for updates](#)

To cite this article: Akifumi Sugiyama, Yoshikatsu Ueda, Hisabumi Takase & Kazufumi Yazaki (2015) Do soybeans select specific species of Bradyrhizobium during growth?, *Communicative & Integrative Biology*, 8:1, e992734, DOI: [10.4161/19420889.2014.992734](https://doi.org/10.4161/19420889.2014.992734)

To link to this article: <http://dx.doi.org/10.4161/19420889.2014.992734>

PLEASE SCROLL DOWN FOR ARTICLE

Taylor & Francis makes every effort to ensure the accuracy of all the information (the "Content") contained in the publications on our platform. Taylor & Francis, our agents, and our licensors make no representations or warranties whatsoever as to the accuracy, completeness, or suitability for any purpose of the Content. Versions of published Taylor & Francis and Routledge Open articles and Taylor & Francis and Routledge Open Select articles posted to institutional or subject repositories or any other third-party website are without warranty from Taylor & Francis of any kind, either expressed or implied, including, but not limited to, warranties of merchantability, fitness for a particular purpose, or non-infringement. Any opinions and views expressed in this article are the opinions and views of the authors, and are not the views of or endorsed by Taylor & Francis. The accuracy of the Content should not be relied upon and should be independently verified with primary sources of information. Taylor & Francis shall not be liable for any losses, actions, claims, proceedings, demands, costs, expenses, damages, and other liabilities whatsoever or howsoever caused arising directly or indirectly in connection with, in relation to or arising out of the use of the Content.

This article may be used for research, teaching, and private study purposes. Terms & Conditions of access and use can be found at <http://www.tandfonline.com/page/terms-and-conditions>

It is essential that you check the license status of any given Open and Open Select article to confirm conditions of access and use.

## Do soybeans select specific species of *Bradyrhizobium* during growth?

Akifumi Sugiyama<sup>1\*</sup>, Yoshikatsu Ueda<sup>1</sup>, Hisabumi Takase<sup>2</sup>, and Kazufumi Yazaki<sup>1</sup>

<sup>1</sup>Research Institute for Sustainable Humanosphere, Kyoto University, Kyoto, Japan; <sup>2</sup>Faculty of Bioenvironmental Science, Kyoto Gakuen University, Kyoto, Japan

Soybean is an important crop, with processed soybeans being the second largest source of vegetable oil and the largest source of animal protein feed in the world. Nodules on soybean roots are responsible for symbiotic nitrogen fixation, enabling soybean plants to obtain sufficient nitrogen for growth and seed production. Because nitrogen is an essential, but often limiting, nutrient for plant growth, improvements in nitrogen fixation are highly required in agriculture. We recently reported a comprehensive analysis of rhizosphere bacterial communities during soybean growth in a field in Kyoto prefecture, Japan. The bacterial communities of the rhizosphere changed significantly during growth, with potential plant growth-promoting rhizobacteria, including *Bacillus*, *Bradyrhizobium*, and *Rhizobium*, increasing in a stage-specific manner. In this addendum, we focus on changes in *Bradyrhizobium* during soybean growth, suggesting that soybean plants select for symbiotic partners.

Legumes (Fabaceae) constitute the third largest plant family in the world, with around 700 genera and 20,000 species.<sup>1</sup> Most legume plants acquire nitrogen nutrients through symbiosis with soil microbes called rhizobia. This legume-rhizobium symbiosis takes place in specialized organs, called nodules, in which rhizobia effectively convert atmospheric nitrogen into ammonium. In return, plants supply the rhizobia with the products of photosynthesis. Sophisticated signaling cascades to form nodules begin when roots of the host plant secrete flavonoids, which are recognized by the NodD protein in rhizobia, leading to the successive induction of nod genes, which produce the second signaling molecules, lipo-chito-oligosaccharides or Nod-factors.<sup>2</sup>

Soybean (*Glycine max*) is the most widely-grown legume crop in the world, with an annual yield of over 200 million tons. Soybeans symbiose with rhizobia such as *Bradyrhizobium japonicum* and *B. elkanii*, with about 50 to 60% of nitrogen supplied by atmospheric nitrogen fixation in nodules.<sup>3</sup> Maximum symbiotic nitrogen fixation occurs between the R3 and R5 stages of soybean development,<sup>4</sup> but is then reduced between the R5 and R7 stages, the seed-filling stages in soybeans. Thus, improvement of nitrogen fixation at these stages is required to optimize agricultural practice.

Genistein and daidzein were identified as signaling flavonoids from soybean roots.<sup>5</sup> Using a plasma membrane-enriched vesicles, we detected clear ATP-dependent transport activity of genistein, and demonstrated that an ATP-binding cassette (ABC)-type transporter is involved in the secretion of flavonoids from soybean roots.<sup>6,7</sup> The amount and composition of secreted flavonoids vary greatly in soybeans grown axenically in mineral nutrient solution, with secretion dependent on growth stages and conditions (our unpublished results). In *Arabidopsis*, the contents and compositions of root exudates were shown to correlate with the metabolic activities of bacterial communities in rhizospheres,<sup>8,9</sup> suggesting the involvement of plant metabolites in forming rhizosphere microbial communities, which, in turn, affect plant health and growth.<sup>10</sup> We recently reported a comprehensive analysis of rhizosphere bacterial communities during soybean growth in a field of Kyoto prefecture, Japan. This analysis showed that the bacterial communities of the rhizosphere changed significantly and in a stage-specific manner during growth, with a higher abundance of potential plant growth

**Keywords:** *Bradyrhizobium*, nitrogen fixation, rhizosphere, soybean, symbiosis

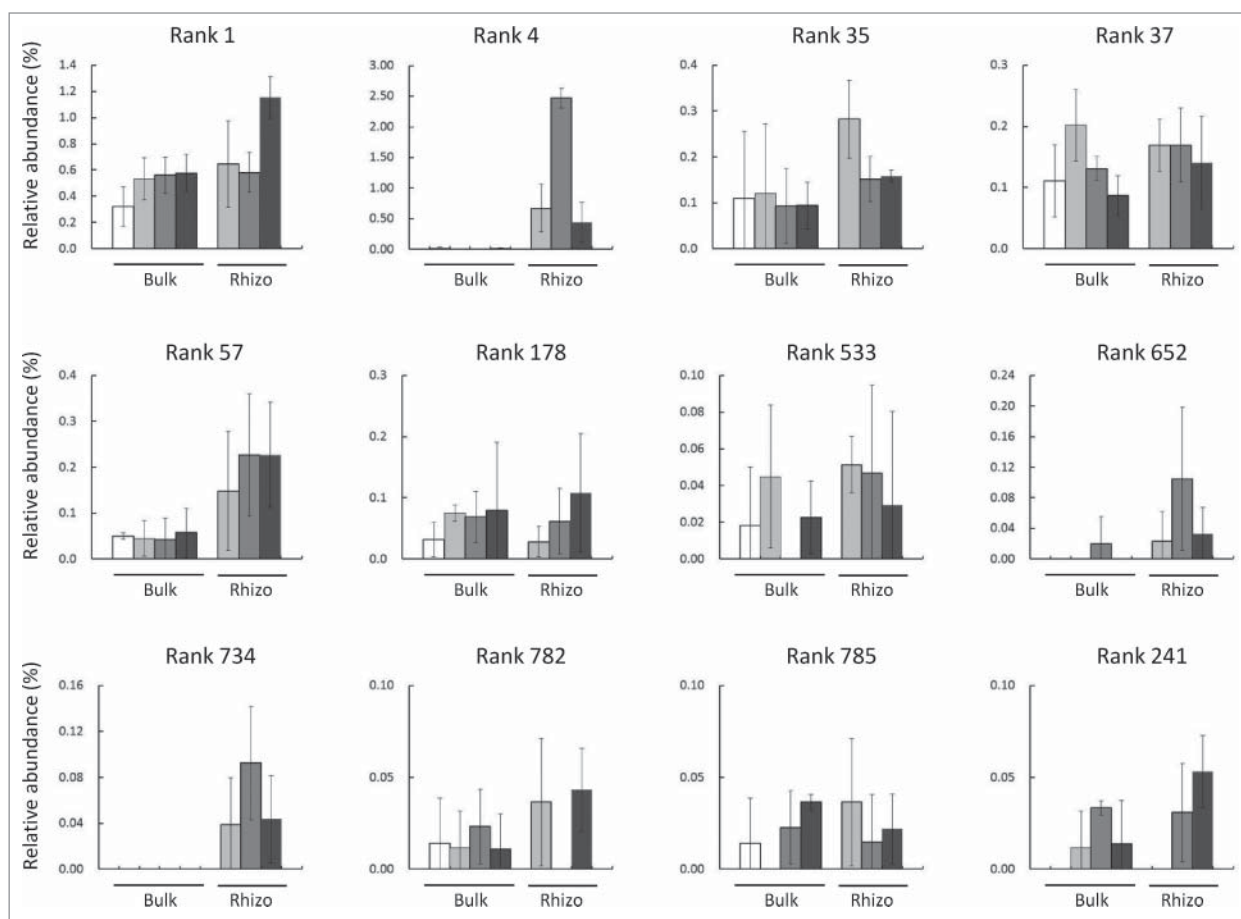
\*Correspondence to: Akifumi Sugiyama, Email: akifumi\_sugiyama@rish.kyoto-u.ac.jp

Submitted: 09/08/2014

Accepted: 09/19/2014

<http://dx.doi.org/10.4161/19420889.2014.992734>

**Addendum to:** Sugiyama A, Ueda Y, Zushi T, Takase H, Yazaki K. "Changes in the Bacterial Community of Soybean Rhizospheres during Growth in the Field." *PLoS One*. (2014) Jun 23; 9 (6): e100709. doi: 10.1371/journal.pone.0100709. eCollection 2014.



**Figure 1.** Relative abundance of OTUs annotated as *Bradyrhizobium*. Shown are 12 of the top 1,000 OTUs annotated as *Bradyrhizobium*. White bars represent bulk soil (bulk) and black bars represent rhizosphere soil (rhizo). Relative abundance was calculated using data from pyrosequencing analysis. The numbers in parentheses are loading values. □; initial stage, ■; vegetative stage, ■; flowering stage, ■; mature stage. Values are mean  $\pm$  SD ( $n = 3$ ). The pyrosequencing data have already been published.<sup>11</sup>

promoting rhizobacteria, including *Bacillus*, *Bradyrhizobium*, and *Rhizobium*.<sup>11</sup> This addendum focuses on changes in *Bradyrhizobium* species during soybean growth.

To characterize changes in *Bradyrhizobium* during soybean growth, the relative abundance of OTUs annotated as *Bradyrhizobium* were compared. At the genus level, the relative abundance of *Bradyrhizobium* at all growth stages was higher in rhizosphere than in bulk soils,<sup>11</sup> although each OTU annotated as *Bradyrhizobium* showed different trends during the growth season (Fig. 1). The most abundant *Bradyrhizobium* (Rank 1) was not more abundant in rhizosphere than in bulk soil, nor did it show a specific pattern during growth. In contrast, *Bradyrhizobium* in Ranks 4, 57, 652 and 734 were more abundant in rhizosphere than in

bulk soils at different stages of growth. These results suggest that soybeans may select specific species, or even strains, of *Bradyrhizobium*. However, the identities of these OTUs could not be determined at the species or strain level due to the limited resolution of pyrosequencing analysis. In a soybean field, *B. japonicum* and *B. elkanii* were the predominant species that formed nodules,<sup>12</sup> with both of these species isolated from nodules of soybeans grown in this field (our unpublished results). In addition, *Bradyrhizobium* with reduced nitrogen fixation activity has been detected in soybean fields.<sup>13</sup> It would be interesting to investigate the changes in these *Bradyrhizobium* at the species or strain level, and to characterize the nitrogen fixation activities of each. Nitrogen fixation activities can be analyzed in correlation with changes of soybean metabolic

activities, especially regarding flavonoid biosynthesis and secretion, which play important roles in rhizosphere biological communications.<sup>14</sup> Soybean-rhizobacteria interactions offer a good model to test the hypothesis that plants select bacteria from reservoir soils to form rhizosphere bacterial communities.<sup>10</sup> This may result in better utilization of rhizosphere microbial communities for agricultural practices.

#### Disclosure of Potential Conflicts of Interest

No potential conflicts of interest were disclosed

#### Funding

This study was partly supported by Kyoto University Step-Up Grant for Young Scientists, and Mission Research

### References

- 1 Doyle JJ, Luckow MA. The rest of the iceberg. Legume diversity and evolution in a phylogenetic context. *Plant Physiol* 2003; 131:900-10; PMID:12644643; <http://dx.doi.org/10.1104/pp.102.018150>
- 2 Wang D, Yang S, Tang F, Zhu H. Symbiosis specificity in the legume: rhizobial mutualism. *Cell Microbiol* 2012; 14: 334-42; PMID:22168434; <http://dx.doi.org/10.1111/j.1462-5822.2011.01736.x>
- 3 Salvagiotti F, Cassman KG, Specht JE, Walters DT, Weiss A, Dobermann A. Nitrogen uptake, fixation and response to fertilizer N in soybeans: A review. *Field Crop Res* 2008; 108: 1-13; <http://dx.doi.org/10.1016/j.fcr.2008.03.001>
- 4 Zapata F, Danso SKA, Hardarson G, Fried M. Time course of nitrogen fixation in field grown soybean using nitrogen-15 methodology. *Agron J* 1987; 79: 172-6; <http://dx.doi.org/10.2134/agronj1987.00021962007900010035x>
- 5 Kossalak RM, Bookland R, Barkei J, Paaren HE, Appelbaum ER. Induction of *Bradyrhizobium japonicum* common nod genes by isoflavones isolated from *Glycine max*. *Proc Natl Acad Sci U S A* 1987; 84: 7428-32; PMID:16593884; <http://dx.doi.org/10.1073/pnas.84.21.7428>
- 6 Sugiyama A, Shitan N, Yazaki K. Involvement of a soybean ATP-binding cassette-type transporter in the secretion of genistein, a signal flavonoid in legume-*Rhizobium* symbiosis. *Plant Physiol* 2007; 144: 2000-8; PMID:17556512; <http://dx.doi.org/10.1104/pp.107.096727>
- 7 Sugiyama A, Shitan N, Yazaki K. Signaling from soybean roots to rhizobium: An ATP-binding cassette-type transporter mediates genistein secretion. *Plant Signal Behav* 2008; 3: 38-40; PMID:19704765; <http://dx.doi.org/10.4161/psb.3.1.4819>
- 8 Chaparro JM, Badri DV, Bakker MG, Sugiyama A, Manter DK, Vivanco JM. Root exudation of phytochemicals in Arabidopsis follows specific patterns that are developmentally programmed and correlate with soil microbial functions. *PLoS One* 2013; 8: e55731; PMID:23383346; <http://dx.doi.org/10.1371/journal.pone.0055731>
- 9 Chaparro JM, Badri DV, Vivanco JM. Rhizosphere microbiome assemblage is affected by plant development. *ISME J* 2014; 8: 790-803; PMID:24196324; <http://dx.doi.org/10.1038/ismej.2013.196>
- 10 Berendsen RL, Pieterse CMJ, Bakker PA. The rhizosphere microbiome and plant health. *Trends Plant Sci* 2012; 17: 478-86; PMID:22564542; <http://dx.doi.org/10.1016/j.tplants.2012.04.001>
- 11 Sugiyama A, Ueda Y, Zushi T, Takase H, Yazaki K. Changes in the bacterial community of soybean rhizospheres during growth in the field. *PLoS One* 2014; 9: e100709; PMID:24955843; <http://dx.doi.org/10.1371/journal.pone.0100709>
- 12 Minamisawa K, Onodera S, Tanimura Y, Kobayashi N, Yuhashi KI, Kubota M. Preferential nodulation of *Glycine max*, *Glycine soja* and *Macroptilium atropurpureum* by two Bradyrhizobium species japonicum and elkanii. *FEMS Microbiol Ecol* 1997; 24: 49-56; <http://dx.doi.org/10.1111/j.1574-6941.1997.tb00422.x>
- 13 Itakura M, Saeiki K, Omori H, Yokoyama T, Kaneko T, Tabata S, Ohwada T, Tajima S, Uchiumi T, Honnma K, et al. Genomic comparison of *Bradyrhizobium japonicum* strains with different symbiotic nitrogen-fixing capabilities and other Bradyrhizobiaceae members. *ISME J* 2009; 3: 326-39; PMID:18971963; <http://dx.doi.org/10.1038/ismej.2008.88>
- 14 Sugiyama A, Yazaki K. Flavonoids in plant rhizospheres: secretion, fate and their effects on biological communication. *Plant Biotechnol* 2014 (in press) DOI: 10.5511/plantbiotechnology.14.0917a